

# Leisure World News

## OF MARYLAND

November 17, 2017 • Published Twice a Month • residents.lwmc.com



While golfers wait for morning frost to thaw on the golf course, a group of residents pass the 18th hole fairway during a chilly, early morning walk Nov. 15. Photo by Maureen Freeman, Leisure World News

## Medical Center to Welcome Five New Providers

by Stacy Smith, Leisure World News

**B**eginning in January 2018, MedStar Health medical center at Leisure World will offer residents five new providers and services, including a wheeled mobility shop, home care agency, audiology services, massage therapy and acupuncture.

MedStar Health holds a meet and greet on Wednesday, Dec. 6, to welcome these new providers and share information about them with the community. The event is from 10 a.m.-1 p.m. in Clubhouse I, and all residents are invited to attend.

### Wheeled Mobility

The Scooter Shop has more than 25 years of experience providing wheeled mobility and durable medical equipment to individuals seeking greater independence.

Available items include manual and power wheelchairs, scooters and seating products. The shop also offers canes, walkers, rollators, bath safety products, patient lifts, beds, power lift recliners and scooter vehicle lifts for both purchase and rent.

Full service maintenance and repairs are also available. For more information, visit (<http://yourscootershop.com/>).

### Home Care

Family & Nursing Care is a licensed, bonded and insured home care agency that helps

older adults maintain independence and quality of life as they age in place.

Caregivers, which include certified nursing assistants, licensed practical nurses and registered nurses, provide skilled medical care, assistance with personal care and companionship.

Family & Nursing Care has served the Maryland and Washington, D.C., area since 1968. For more information, visit (<https://www.familynursing-care.com/>).

### Audiology

Ascent Audiology & Hearing uses the latest technology to diagnose and treat hearing difficulties and provide customized solutions to rehabilitate hearing.

Doctors of audiology and certified audiologists offer testing and consultation, hearing aids, tinnitus treatment, aural rehabilitation, repairs and servicing and accessories.

Ascent Audiology & Hearing serves the Washington, D.C., metro area. For more information, visit ([www.hearingaidDoctors.com](http://www.hearingaidDoctors.com)).

### Massage Therapy

Licensed massage therapist Beth Armagost offers massage services, including deep tissue massage, Swedish massage, chair massage and home visits.

“Massage can be so restorative for such a wide variety of issues – anything from muscle or nerve

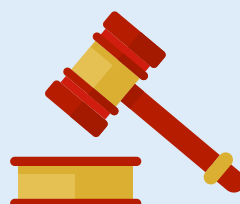
► to page 2



Saturday shuttle bus service began running from 10 a.m.-2 p.m. Nov. 4 to coincide with the end of daylight saving time. Saturdays' winter hours remain effective through March 10, 2018. Visit ([residents.lwmc.com](http://residents.lwmc.com)) for full weekly shuttle bus schedules. Photo by Leisure World News

### INSIDE

Governance & Information ....	6	Club Trips Listing.....	31
Holiday Schedule.....	6	Sports, Games & Scoreboards .....	34
Thoughts & Opinions .....	8	Classes & Seminars .....	38
Events & Entertainment.....	10	Calendar of Events .....	39
Movie Schedule.....	13	Governance Meeting Schedules .....	39
Health & Fitness .....	14	Classifieds.....	42
Clubs, Groups & Organizations .....	16		



The Montgomery County Planning Board holds a hearing about the proposed Administration Building and Clubhouse I Site Improvements Plan on Thursday, Nov. 30. For details, **see pages 3 and 4.**

# MedStar

◀ from page 1

pain, stiffness from immobility due to a recent surgery, recovery of movement following a brain injury or stroke, easing anxiety or lifting depression due to an existing condition, or following a devastating loss," Armagost said.

For more information, visit (<https://riverdancemassage.amtamembers.com/>).

## Acupuncture

Certified registered nurse practitioner Gail Koffman provides acupuncture to treat a wide range of conditions,

both physical and mental, with an emphasis on facilitating disease prevention, supporting well being and promoting longevity.

Acupuncture is a technique in which practitioners stimulate specific points on the body, most often by inserting needles through the skin. It is one of the practices used in traditional Chinese medicine.

Results from a number of studies suggest that acupuncture may help ease chronic pain and help reduce the frequency of tension headaches and prevent migraines, according to the National Institutes of Health.



From left to right: Registered nurse and acupuncturist Gail Koffman, audiologist Dr. Ana Anzola and licensed massage therapist Beth Armagost. Courtesy photos

# Dec. 9: Golf Party at the Pro Shop

by Leisure World News

Rediscover what Leisure World's Golf Course has to offer at a holiday party on Saturday, Dec. 9, from 11 a.m.-5 p.m. in the Pro Shop.

All residents are invited to stop by the Pro Shop to enjoy light refreshments and holiday cheer, and browse the new and improved selection of athletic wear and accessories. Golfers can redeem their tournament credit by purchasing items.

The Pro Shop sells short and long-sleeved shirts, light jackets, warm quilted vests, Bermuda shorts, visors, hats, sunglasses and hand towels. Some items feature the Leisure World logo.

Get a jump on your holiday shopping by purchasing stylish and comfortable attire.

Come renew your membership for the upcoming 2018 season, try a three-month trial membership, sign up for



Athletic wear for all seasons is available at the Pro Shop. Photo by Leisure World News

a lesson, or share the joy of golfing with friends and family by purchasing an associate membership for someone this holiday season.

For more information, call the Pro Shop at (301-598-1570).

## GOOD TO KNOW:

### MEDSTAR CHECK-IN WINDOW

All MedStar Health medical center's primary care and specialties' patients, with the exception of podiatry and dental, are asked to check in at the desk near the main entrance in the

rear of the building facing the garden plots.

Podiatry and dental patients should enter the building through the entrance that faces Leisure World Boulevard.

– Leisure World News

## CORRECTION

An article in the Nov. 3 edition of the Leisure World News misstated that the woodshop is located in Clubhouse II; it is located in Clubhouse I.

The CNC training course is six weeks long, not six months. Bob Namovicz is the Group's current president, and John Van Dyke is its past president.

**ASPEN HILL  
EXXON**  
**301-871-6777**



**Auto Care**

**www.aspenhillexxon.com**  
**14011 Georgia Ave.**

Owned and Operated by BENNY Since 1980 "or ask for my son DAN."  
Friendly, personal and professional service!

**Free transportation home and back when you leave your car for service!**

• Complete Automotive Maintenance Service & Repair • Most Makes & Models  
• Two Years/24 Month Warranty • Factory Scheduled Maintenance

### Auto Service Discounts

**Oil Change Service Special - \$29.95**

**5 Qts of synthetic blend 5W/30 oil**

**Oil Filter & Lube ♦ Multi-Point Inspection**

**Most cars, plus tax & disposal fee**

**Full Synthetic Extra**

**Present this Coupon with Incoming Order. Expires November 30, 2017**

**Maryland State Inspection Station**

# Leisure World News OF MARYLAND

An official publication of the Leisure World Community Corporation, Leisure World News is published twice monthly by Leisure World Staff in collaboration with the Leisure World News Advisory Committee

Leisure World News is published for the benefit of Leisure World residents. Its mission is to provide news and information about community governance and other relevant issues, events, and activities, and to provide residents a forum for their opinions and an opportunity to contribute articles of general interest. All matters concerning the Leisure World News will be decided with this mission in mind.

#### Leisure World Staff

Maureen Freeman,

Director of Communications

Stacy Smith, Senior Editor

Kathleen Brooks, Publication Associate

Cassandra Chisholm, Graphic Designer

Editorial: lwnews@lwmc.com

Advertising: lwnewsads@lwmc.com

301-598-1310

#### Communications Advisory Committee

Arthur N. Popper, Chair

Bernie Ascher, Vice Chair

aclwn@lwmc.com

#### Resident Contributors

Barbara Braswell, Rincy Pollack

and Alan Goldstein

Leisure World News of Maryland reserves the right to reject or discontinue any advertisement believed to be not in the best interest of Leisure World. We will not knowingly permit a dishonest advertisement to appear nor do we guarantee the reliability of advertisers.

# Resident Website: Frequently Asked Questions

by Leisure World News

**M**ore than 550 residents have signed up to use the updated (residents.lwmc.com) website, but learning how to routinely visit and navigate the site can take some getting used to. These helpful tips may help hasten the process.

## **Q: I signed up on the website a while ago, but forgot how to sign in.**

A: Residents who have already signed up on (www.residents.lwmc.com) can sign in by clicking on resident sign in at the top of the webpage, or by scrolling down and clicking on one of two Sign In links.

## **Q: How do I change my password?**

A: You can change your password by first signing into (residents.lwmc.com) and typing the name of your mutual in the search bar at the top

left of the page. You will then be redirected to your mutual's homepage. Click on the profile tab in My Account. Then click on the Edit Sign In Information box to change your password.

## **Q: I'm looking for a specific document. How do I find it?**

A: Click on the down arrow next to Resident Documents and a drop down menu appears. Then click on either Resident Document Locator or Resident Documents to be taken to the Resource Center.

The Resource Center contains Leisure World Community Corporation and Leisure World Maryland Corporation (LWMC) documents, such as Trust documents, committee and board meeting minutes and agendas and community policies.

Users can enter a search term into the search bar to locate a specific document, or search the individual folders' contents.

## **Q: How do I add my contact information to the online resident directory?**

A: You can control the amount of your contact information, including phone numbers and email addresses, that is visible to other resident website users.

After signing in to the resident website, go to your mutual's homepage and click on the Subscriptions tab in the My Account box.

Then click on Edit Communication Preferences and scroll down to the section "How to keep in touch."

Type in your phone number(s) and email address in the available boxes, then opt in to the public resident directory by clicking the check boxes to the right. You may check as many or as few as you wish.

Don't forget to click on the Save button when finished. Residents may edit this information later if they choose to

opt out some or all of their contact information.

## **Q: I need help accessing or navigating the site. Who can I contact?**

A: The website help desk is available Monday through Friday, from 1-4 p.m. at (301-598-1029). Residents can also email their questions and concerns to (websitesupport@lwmc.com).

## **Q: My friend or family member wants more information about Leisure World. Can he or she sign up as a user on the new website?**

A: The website (residents.lwmc.com) is accessible via login for residents, some LWMC staff and property owners only. Individuals who are interested in purchasing property, or who would just like to learn more about the community, are encouraged to visit the public website at (leisureworldmaryland.com).

# County to Hold Hearing on Proposed Administration Building

by Leisure World News

**T**he Maryland-National Capital Park and Planning Commission's (M-NCPPC) Montgomery County planning board holds a hearing on the Administration Building and Clubhouse I Site Improvements project on Thursday, Nov. 30, during the afternoon session.

The hearing will be held at 8787 Georgia Avenue in Silver Spring and is open to the public. The meeting's agenda will be posted on the M-NCPPC website at (<http://montgomeryplanningboard.org/agendas/>).

Residents who wish to express their opinions on the proposed project to the planning board before the hearing must send written comments to board chairman Casey Anderson by Tuesday, Nov. 28, at 5 p.m.

Residents have three options to contact Anderson:

- by email at (MCP-Chair@mncppc-mc.org)
- by fax at (301-495-1320)

- by mail at Montgomery County Planning Board (8787 Georgia Ave., Silver Spring, MD 20910)

Residents who wish to speak at the hearing can sign up at (<http://montgomeryplanningboard.org/meetings/signup-to-testify/>). Online sign up is generally available beginning 10 days prior to the hearing date. On the day of the hearing, residents are asked to see the board assistant to sign up to speak.

M-NCPPC Planning Board hearings are webcast live at (<http://montgomeryplanningboard.org/meetings/watch-online/>).

The Montgomery County planning board's rules of procedure is available at (<http://www.montgomeryplanningboard.org/agenda/2007/documents/RulesFINAL3.21.07.pdf>).

The Administration Building and Clubhouse I Site Improvements project is part of the Facilities Enhancement Plan, which has been used

over the last five years to help the Leisure World Community Corporation board of directors prepare a strategic plan for renovating existing, and constructing new, Trust facilities.

If the planning board approves the estimated \$7.2 million project, the Leisure World Community Corporation board of directors will consider funding authorization before proceeding with construction.



# Administration Building and Clubhouse I Site Improvements: Frequently Asked Questions

by Stacy Smith, Leisure World News

With the Thursday, Nov. 30, Montgomery County planning board hearing approaching, residents might seek answers to commonly asked questions regarding the proposed Administration Building and Clubhouse I Site Improvements project.

## **Q: Did the Leisure World Community Corporation (LWCC) board of directors consider renovating the existing Administration Building?**

A: In 2012, the LWCC board of directors began reviewing three options for the Administration Building: renovate, expand or construct new. In 2013, the board voted to design and construct a new building.

“Sometimes when you start doing a renovation, you run into some more problems than what you anticipated,” said project manager Nicole Gerke during a presentation given about the project to residents of The Overlook on Nov. 6.

Several engineering and structural issues were uncovered during the renovations made to parts of Clubhouse I in recent years, and these issues and others will likely be present in the Administration Building, wrote Jolene King, then assistant general manager for facilities and services, in a memorandum issued to the board in February 2017.

Some of the issues uncovered with the renovation of Clubhouse I included:

- Broken roof trusses (\$35,000)
- Broken and severely deteriorated underslab electrical conduit wiring (\$25,000)
- Full replacement of existing electrical panels and wiring (\$12,000)
- Inadequate or missing concrete floor slabs (\$15,000)
- Broken and severely deteriorated underslab plumbing (\$8,000)

The current Administration Building, originally constructed as the Rossmore Sales Office, and Clubhouse I were built concurrently in the 1960s, when building codes and environmental regulations largely differed from today’s standards.

The typical life cycle cost of a renovated building is 15-20 years, whereas a new building’s is 30-50 years, according to a 2014 Administration Building design report issued to the board. In 2012, two architectural firms, Streetsense and AR Meyers, advised the board that a new building would provide the longest-term value to the community.

## **Q: Did the board of directors consider completing an invasive engineering study on the existing Administration Building?**

A: An invasive engineering study was considered by the board in November 2014. Board members weighed the proposed engineering study’s expected cost, timeframe for completion, and amount of management staff’s time required, against the benefits of completing such a study, and the motion failed to pass.

During a January 2017 meeting of the LWCC board of directors, King and Gerke discussed the study and gave oral responses to questions from board members and others.

## **Q: Why was the construction of a new Administration Building proposed?**

A: The proposed Administration Building and Clubhouse I Site Improvements project is part of the Facilities Enhancement Plan (FEP), a series of projects designed to renovate existing, and construct new, Trust facilities. Completed FEP projects include the Clubhouse I Crystal Ballroom and the Fitness Center.

A new Administration Building would provide an estimated 3,866 square feet

of additional space, able to accommodate a larger staff size with expanded operations.

Streetsense and AR Meyers also advised that a new building would provide greater accessibility and maneuverability within the building without losing program functioning, and provide a more efficient layout to optimize operations and services for residents.

## **Q: How would Leisure World pay for this project?**

A: Funding for all FEP projects comes from the Resales Fund, monies of which are derived from a two percent fee charged on each resale of property in Leisure World. The board elected not to borrow monies from outside Leisure World for FEP projects.

The two percent Resales Fund is sometimes referred to as the Facilities Enhancement Fund or Trust Fund.

The most current cost estimate for the project, completed in September 2016, approximated the total cost to be \$7.2 million. The cost includes the construction of a new Administration Building and all Clubhouse I site improvements, the demolition and removal of the existing building, and “soft costs,” such as engineering, design, architecture and permit fees.

Although a new building costs more than renovating, Gerke said, a new building would include all new systems and design for increasing energy efficiency and reducing energy costs – leading to lowered operating costs, according to King’s February 2017 memorandum.

Leisure World Management Corporation is working with a cost estimator to measure any cost impacts made by additions or changes to the architecture and design.

## **Q: How would this project affect parking and landscaping?**

A: Proposed site improvements would provide

improved accessibility and parking in close proximity to the buildings, and include more than twice as many handicap parking spaces.

“[Residents with disabilities] won’t have that long walk from the current parking lot to get into Clubhouse I or the restaurants, and I think that’s one of the big pluses of this particular design,” said board member Ken Muir.

The project’s landscaping plan includes the addition of approximately 100 3-4 foot tall trees that, though not fully mature, are also not saplings.

“For trees to grow to the size that you see around here, they’ve been around well over 50 years. So [the new trees] will take a while to grow,” Gerke said.

Trees will also line the outer edge of Leisure World Boulevard in front of the parking lot.

“You’ll have a lot of greenery as you come into the community from [the main gate],” Gerke said.

The new Administration Building parking lot would also have several islands lined with trees, providing shade for crosswalks.

The proposed Administration Building is not a two-story building; but rather, a bi-level building. “It is going to be no taller than what you have with the current Clubhouse I,” Gerke said.

## **Q: How long would this project take to complete?**

A: Construction of a new Administration Building and Clubhouse I site improvements would take approximately 12-14 months from start to finish.

“That’s from the first shovel in the ground, all the way through getting the new building constructed, furnished, moving everyone into the new building and then demolishing the existing building and [constructing] the parking lot area,” Gerke said.



Riderwood offers **MORE** than other senior living options.

## Here are 3 REASONS we're Silver Spring's most popular choice for active retirement living:

### 1. You get **MORE** for your money

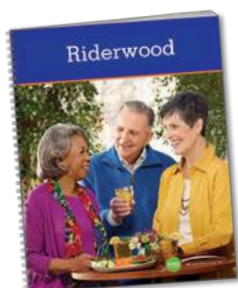
At a senior rental community, the money you pay is gone forever. At a life care community, you're forced to pay extra for care you may never use. But at Riderwood, 90% of your entrance fee is refundable.\* You only pay for advanced care if you need it.

### 2. You enjoy **MORE** amenities and services

Riderwood is your one-stop spot for resources and fun. The 120-acre campus includes abundant outdoor living space. Clubhouse amenities like restaurants, a fitness center and pool, and even a medical center are all just steps from your door.

### 3. You experience **MORE** peace of mind

You won't have to worry about fluctuating expenses because the Monthly Service Package covers almost all your regular bills, plus maintenance and repairs. Should you ever need it, more advanced care is available at the on-site continuing care health services neighborhood. Your finances and your future are secure!



## LEARN MORE!

Get more information about senior living at Riderwood. **Call 1-800-989-6177** for your **FREE** brochure or to schedule a personal tour.



# Riderwood

*Add more Living to your Life®*

Silver Spring

[RiderwoodCommunity.com](http://RiderwoodCommunity.com)



\*Carefully read the Residence and Care Agreement for the conditions that must be satisfied before the Provider is required to pay the Entrance Fee Refund.

# GOVERNANCE & Information

## ■ Foundation of Leisure World

### Foundation Seeks New Board Member

by Bob Stromberg

The Foundation of Leisure World has a vacancy on its board of directors and is requesting applications from residents who would like to serve.

If interested, submit a letter and a short biography to the Foundation mail slot at the Clubhouse I E&R office by Friday, Dec. 1. Please include your activities within Leisure World, such as participation in clubs, organizations or governance. Interviews will be arranged.



The Foundation of Leisure World is a 501(c)(3) organization that was established for health, educational and cultural purposes. It helps subsidize other organizations and events at Leisure World, such as Fire-side Forum, and has purchased items for the community, recently replacing all the computers and associated equipment for the Computer Learning Center.

Contributions to the Foundation of Leisure World may be claimed as deductions on income tax returns to the extent permitted by law.

**Dial 301-598-1313  
for recorded Daily Events**

### 2017 Broadcast Schedule - Channel 974

*Executive Committee meetings are broadcast on Wednesday, Thursday and Friday the week after the meeting. Board of Directors meetings are broadcast on Monday, Wednesday and Friday the week after the meeting. All broadcasts are at 4 p.m. and 7 p.m.*

<b>Executive Committee Meeting</b> The Nov. 17 meeting airs on Nov. 22, 23, and 24.	<b>Board of Directors Meeting</b> The Nov. 28 meeting airs on Dec. 4, 6 and 8.
--	---

## Group Email Addresses

Residents wishing to contact Leisure World Management, the LWCC Board of Directors, or the Executive Committee may send an email to the appropriate email address listed below. It will automatically be forwarded to all members of that group who have an email address on record.

Messages to any of the email groups should pertain only to the management and operation of Leisure World trust properties, services, or activities. Please do not send emails to all three addresses, as there will be a duplication of recipients and will not result in a faster response to your question or comment. Messages pertaining to mutuals or anything else which Management, the Board of Directors, or Executive Committee does not control should also not be sent to these groups.

The group email addresses are:

- LWMC Management - management@lwmc.com
- LWCC Board of Directors - board@lwmc.com
- LWCC Executive Committee - excomm@lwmc.com

## Dec. 4: AARP Safe Driving Course

The E&R Department is sponsoring an AARP Safe Driving Course on Monday, Dec. 4, in Clubhouse I from 9:45 a.m.-3 p.m., with a one-hour break for lunch.

You must pre-register for the course, which is for residents only. Please bring your Leisure World ID. A check payable to AARP, \$15 for AARP members and \$20 for non-members, is required at the time of registration. (Please note: AARP members must show a current membership card to receive the AARP discount.) Register in the E&R Office in Clubhouse I beginning at 8:30 a.m. on Tuesday, Nov. 21. The number of participants is limited to 25, so plan to register early.

Participants should bring their driver's license and a pen or pencil to the course. If you have any questions, contact the E&R Office in Clubhouse I at (301-598-1300).

## ■ Computer Learning Center

### Holiday Computing

The Computer Learning Center is ready for the holidays. Stop by and sign up to volunteer, or ask a monitor about signing on to any of the 22 computers that are available in the Center for residents to use free of charge.

Resident volunteers staff the Center. Please check the schedule in Clubhouse II located on the door of the Center and in the E&R office. Residents can also visit the Center's website at (www.computerctr.org) for the hours the Center is open, based on monitor availability.

– Betty A. Smith



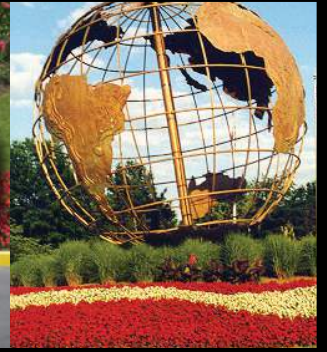
## HOLIDAY SCHEDULE

Thursday, Nov. 23, Thanksgiving

LOCATION	HOURS
Administration .....	Closed
<b>CLUBHOUSE I</b>	
Education & Recreation .....	10 a.m.-8 p.m.
Eyre Travel.....	Closed
Rossmoor Library.....	Closed
Restaurants – Thanksgiving Dinner – reservations only	
<b>CLUBHOUSE II</b>	
Education & Recreation .....	8 a.m.-8 p.m.
FISH Desk.....	Closed
Fitness Center.....	4 a.m.-9 p.m.
Swimming Pool (Indoor).....	Noon-8 p.m.
<b>OTHER SERVICES</b>	
Golf Course & Pro Shop.....	8 a.m.-2 p.m.
MedStar Health .....	Closed
MedStar Pharmacy .....	Closed
Physical Properties Department (PPD) .....	Closed
Post Office .....	Closed
Security Gates .....	Open

**Shuttle Buses:** No shuttle service. Call Main Gate for supplemental transportation.

**Trash Collection:** No trash or recycling collection. Trash collection will be on the next regular day for your location.



# #1 In LISTINGS In Leisure World®

## Authorized Leisure World® Specialist



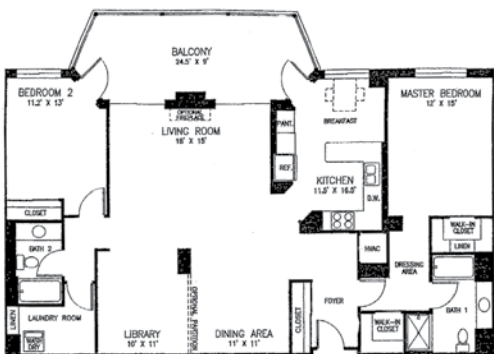
**"K" Model - Greens - \$205,000**  
2 BR, 2 FB, den/library, 1480 sq. ft.  
Freshly painted, new carpet, garage space.



**"E" Greens - \$159,000**  
2 BR, 2 FB, 980 sq. ft. Freshly painted,  
golf course view.



**"F" Model - Greens - \$179,000**  
2 BR, 2 BA, 1115 sq. ft. First floor, freshly  
painted and garage space included.



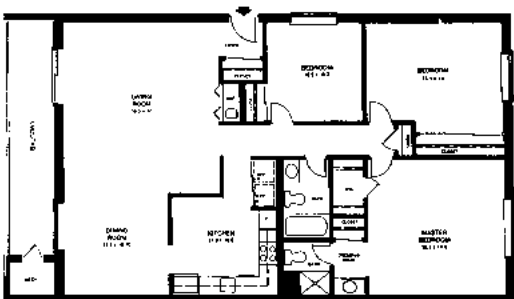
**"Q" Model - Overlook - \$425,000**  
2 BR, 2 BA, den/library, 1520 sq. ft.  
Like a model, hwd flrs, ceramic in enclosed  
balcony, stainless appli, cherry cabinets, golf  
course view, many extras & upgrades.



**"Raleigh" Model - \$89,000**  
1 BR, 1 FB, 990 sq. ft. Freshly painted,  
enclosed sunroom.



**"M" Fairways - \$279,000**  
2 BR, 2 FB, 1530 sq. ft. Rough for half bath,  
golf course view, garage space.



**"Capri" Model - \$189,000**  
3 BR, 2 FB, 1415 sq. ft. Freshly painted,  
carport, balcony, plush carpet, eat-in kitchen



**"H" Model - Greens - \$215,000**  
2 BR, 2 FB, 1210 sq. ft. Freshly painted, new  
carpet, tiled bathrooms, golf course view,  
garage space included.

## COMING SOON



**"S" Model - Fairways - TBD**  
2 BR, 2 BA, den/library, 1460 sq. ft.  
Garage space included.

Experience for yourself why Stan is #1 in Leisure World®

**Call 301-928-3463 and List with Stan Now!**



Office: 301-681-0550 Email: stanmoffson38@gmail.com  
Web: www.stanmoffson.com



# THOUGHTS & OPINIONS: *From Our Residents*

## A Few Things to Remember

- Relevance:** Make sure that your submission is relevant to the LW community as a whole and not to just one person, mutual, or organization.
- Respect:** Remember that your opinion is about ideas, not individuals, and please avoid personal attacks.
- Brevity:** Being concise will ensure that your opinion will have maximum impact.
- Accuracy:** Document all factual assertions. Opinions that are backed up with facts are more powerful, but only if the facts are accurate.
- Ownership:** All submissions are subject to editing but you will have the opportunity to approve the edits before publication.

*Opinions are strictly those of the writers*

## Attention LW Leaders: Please Think Again!

As authoritative legal research by one of our fellow residents has shown, it is probably not possible to mobilize the Montgomery County Planning Board against the Administration Building project. I also think that the earlier attempt at onsite mass mobilization (“town halls”) was a wasted effort. A slogan such as “325 standing room only” in a community of over 8,000 is not exactly compelling. And the suggestion to reason with individual Leisure World board members is likewise flawed. If it’s true that some board members are resisting what I believe to be self-evident facts – that the building project is based on misleading and outdated cost estimates – then disinterested attempts to reason with them are unlikely to succeed.

So, what is to be done? In my opinion, we need to formulate a realistic political strategy adequate to the challenge of the moment, i.e., an onsite “anti” coalition using whatever means are at our disposal. The most immediate and obvious tool is an email list with which to communicate to individual residents – a list far more extensive than the one now being used by the existing opposition. Project opponents must, in particular, reach out to resident clubs, groups and organizations to explain to their members what is at stake and what must be done if we are

to stop this monstrous project before it swallows our resources and perhaps our community itself. Coalition building is the classic sine qua non of effective political action, but as yet it has not even been envisioned, never mind attempted.

But that is merely the first step. In the long run, a more important step is to promote a positive vision of what kind of community we want, so that the current battle will be the last one of this nature we have to fight. Above all, we must understand the deeper reasons for the current crisis, which I believe to be structural and based on a “script” written long ago. Specifically, we must ensure that Leisure World becomes a truly democratic community. Achievement of that goal will require reform, especially at the mutual level, where the problem originates. In my opinion, a democratic Leisure World structure exists only in embryo form. It might look good on paper, but it seems to me that some mutual representatives selected for Leisure World board membership have already met a “test” of reliably submitting to the existing order. If so, that is a stranglehold that must be broken for anything of lasting consequence to be achieved.

We must, in particular, have authentic elections in which candidates are obliged to appear before their peers at true “town hall meetings” and explain why they are running and what they hope to accomplish on our behalf.

Ideally, there should be questioning of, and debates between candidates and a provision for their ready removal should they seriously deviate from the “platform” on which they ran. Politics is – or should be – a serious business. This is not high school juvenilia. There are millions of dollars and the quality of community life at stake.

Yes, this is asking a lot, especially since many residents seem to be alienated from the status quo, so that they cannot be expected to support such an ambitious reform program. But nothing less will do. If it’s true that some nominal leaders of Leisure World believe that they alone know what is good for us, they will continue in that vein until and unless we adopt an effective political strategy that forces them to soberly heed our collective wishes.

– David Katz

## Driving in Leisure World

We residents have become more vulnerable from drivers – resident and non-resident alike – who cannot and/or will not obey the rules of the road. Although some visiting drivers can be a problem, I’m afraid that there are many more residents who, frankly, are no longer physically and/or mentally capable of operating a moving vehicle in a safe manner but continue to drive.

I understand that residents consider the use of an automobile as a means of independence. Further, it is likely that they consider driving to be a “right.”

In my opinion, driving is not a right, but a privilege. It requires a license and a demonstration of the ability to operate a motor vehicle properly. And that independence and that privilege should not, and must not, infringe upon the rights of others regarding our own safety and well-being.

For example, slowing down at a stop sign but continuing to advance into the street despite oncoming traffic does not meet the legal definition of a stop. Running a stop sign and then stopping in the middle of the boulevard while waiting for the other side to clear of traffic also does not meet that definition. Advancing through a yield sign in the face of oncoming traffic is not a yield and, furthermore, it is the oncoming traffic that has the legal right-of-way. These acts of bad driving endanger both the bad driver as well as other innocent drivers and pedestrians.

There are residents who have been injured because of bad driving. When that happens, all of the claims for independence or the so-called “right” to drive become invalid for that bad driver. Unfortunately, in discussing this matter with other residents and some visitors, I have learned that there are some family members of residents who are aware that their parents or relatives in Leisure World should not be driving because of age or infirmity. However, they do not want to confront those drivers. This, then, becomes a tragedy waiting to happen and, unfortunately, innocents will become victims.

– Peter La Lena

## Submitting an Item to Thoughts & Opinions

1. Submissions must be emailed to [aclwn@lwmc.com](mailto:aclwn@lwmc.com) or delivered to the LW News Office.
2. Receipt of submissions will be confirmed by email or telephone.
3. Submissions must state the writer’s name, address, telephone number, and email address, if any, but if the material is published, it will include only the writer’s name.
4. LW News cannot guarantee when or if a submission will be published.
5. See LW News Guidelines and Board Standing Rules at [www.residents.lwmc.com](http://www.residents.lwmc.com).



## Compromise

So many reasons to raze the present administration building are afloat. They range from making the entrance to Leisure World more appealing to potential residents, to warding off competition from other senior complexes, and let's not forget our need to give employees more elbow room, since they seem to be crowded "cheek to jowl." And there are others.

In the spirit of compromise, instead of spending over \$7 million, destroying greenery, and attempting to reach goals

which are not entirely clear, I ask consideration of some alternatives. For example, couldn't we keep the existing building, gut the lobby and existing offices (although not the new credit union), and reconfigure the space into more efficient and effective offices for our staff?

If it's feasible and cost-effective, another alternative would be to remove the existing roof and construct a second story. That would provide additional office space for staff, as well as areas that could be leased to

agencies and businesses that have specific focus on seniors and our well-being. And, adding conference rooms to rent would be yet another source of income for Leisure World.

Taking this idea a little further, we might reserve a portion of the second floor as a recreation area/lounge, perhaps with a kitchen, bar, cozy seating, carpeting, a dance floor, tables for games, a video screen, etc. This lounge could also be rented out for private parties and celebra-

tory events, thus providing even more income for Leisure World.

Our imagination could even be stretched to provide glass walls for this lounge! With appropriate positioning and lighting and clever engineering, it could serve as a "beacon" for current LW residents as they return home and for prospective new residents.

Remember, we went to the moon. We can do this. Compromise.

— Brenda Kirkpatrick

## Baronessa

Italian Restaurant

(Under new management)

1302 E Gude Dr Rockville  
MD 20850

(301) 838-9050

**15% OFF**

Dinner or  
Weekend Brunch

Cannot be combined with other offer.  
15% off, up to max. \$20. Coupon must be  
presented at the time of purchase.

Expires December 15th, 2017

Family Owned and Operated

Serving LW For Over 30 Years



**\$150 OFF**  
a pair of  
prescription glasses

13808 Georgia Ave.  
1 mile south of LW.

**eyeland** 301-871-6454



Please join

President of Senate Thomas V. "Mike" Miller, Jr.

Chair, House Economic Matters Committee, Dereck E. Davis

Montgomery County Executive Isiah "Ike" Leggett

For a Hors d'oeuvre Reception in Honor of

**Ben Kramer for State Senate**

Tuesday, November 28, 2017

5:30 PM – 7:00 PM

at

Crystal Ballroom, Clubhouse 1

**RSVP** by Wednesday, November 23, 2017

301-236-9411

Political campaigns are expensive, therefore, contributions are appreciated and joyfully accepted.

If you choose to do so, please make checks payable to:

Friends of Ben Kramer  
704 Cloverly Street

Silver Spring, Maryland 20905

By Authority: Friends of Ben Kramer, Cynthia Craven, Treasurer

# EVENTS & Entertainment

## ■ Education and Recreation Department

### Nov. 18: Come to the Arts and Crafts Bazaar

The E&R Department's annual Holiday Arts and Crafts Bazaar is Saturday, Nov. 18, from 9:30 a.m.-1 p.m. in the Clubhouse I Crystal Ballroom. Start your holiday shopping right here in your own community. All vendors are Leisure World residents who are selling a variety of gift items – original, new and perfect for the holidays.

Fair vendors may begin bringing in their merchandise at 8 a.m. The market opens to the general public at 9:30 a.m.

Vendors are reminded that they must remove all unsold merchandise and debris (boxes, hangers, wrapping materials, etc.) when they leave. Individuals and organizations are responsible for the collection and payment of sales tax.

## ■ Jewish Residents of Leisure World

### Dec. 1: Seminar on Presidents Bush to Trump

by Sharon V. Freedman

On Friday, Dec. 1, the Jewish Residents of Leisure World (JRLW) education committee welcomes Dr. Michael Siegel, one of last year's very popular brunch speakers, for the second of a two-part seminar.

The second seminar focuses on the leadership skills of Presidents George W. Bush, Obama and Trump, seeking to demystify the elements and dynamics of effective presidential leadership that America's democracy has come to depend upon and value.

The leadership criteria that Siegel uses to evaluate the presidents are vision, execution (implementation), management and decision-making.

He argues that leadership in the White House can be explained and assessed by using a consistent set of criteria to analyze presidential performance. Siegel shows that presidential leadership is exercised by real, flawed human beings, and not by superheroes

or philosopher-kings beyond the reach of scrutiny or critique

The session is from 10-11:30 a.m. in Clubhouse I. Siegel provides attendees time to ask questions at the end of his presentation.

Siegel is a senior education specialist at The Federal Judicial Center in Washington, D.C. He organizes and presents training programs for federal judges and court unit executives on leadership development and negotiation skills.

He also teaches as an adjunct professor at Johns Hopkins and American Universities. He is the author of the book, "The President as Leader" and 15 articles in political science and criminal justice journals.

All residents are welcome to attend the Dec. 1 session. Tickets, \$15, are check only, payable to JRLW and can be placed in the JRLW mail slot the Clubhouse I E&R office. Please contact Sharon V. Freedman at (skfreedman@yahoo.com) or (301-367-8141) with any questions.

## ■ Education and Recreation Department

### Dec. 1-3: Academy Music Recitals

The E&R Department is pleased to welcome back students from the Academy Music for their winter recitals. The recitals are performed over three days: Friday, Dec. 1, at 6 p.m.; Saturday, Dec. 2, at 5 p.m.; and Sunday, Dec. 3, at 6 p.m. in the Clubhouse II auditorium.

Students of all ages perform a variety of piano and vocal pieces, from the classics to modern contem-

porary works. You may also hear some seasonal favorites to put you in the holiday mood.

Performers currently study piano and vocal music with instructors Esther Whitlock and Julia Bryant. The Academy Music is located in Olney.

The performances are free but tickets are required. They can be obtained at the Clubhouse I E&R office. Please bring your Leisure World ID.

## ■ Ballroom Dance Club

### Nov. 18: Pocket Change Performs



Dance to the music of Pocket Change led by Ken Smith on Saturday, Nov. 18, from 7:30-10:30 p.m. in the Clubhouse I Crystal Ballroom. The dress code for the dance is dressy for the ladies and jackets and ties for the gentlemen. Make reservations prior to the dance by calling Irmgard Patrick at (301-598-2984).

– Joyce Hendrix

## ■ Education and Recreation Department

### Nov. 30: Broadway Musical Milestones

Steve Friedman returns on Thursday, Nov. 30, at 1:30 p.m. in Clubhouse I for his continuing series of programs on the history of Broadway. He uses song and lecture to delve into how Broadway musicals have developed over the decades.

Certain musicals changed things in their times and had an impact on the future of the Broadway musical. Friedman demonstrates how these special musicals influenced our culture and vision of what a Broadway musical could be.

A Washington, D.C., resident, Friedman is a trained classical tenor and has performed many musical theater roles. It was through performing in musicals and his love of musical theater that he developed a desire to lecture on the history and development of the Broadway musical.

Tickets are \$5 per person and on sale in both clubhouse E&R offices. Please bring your Leisure World ID.



Steve Friedman. Photo by Leisure World News

■ Fireside Forum

# Dec. 3: Free Speech Under Attack – What Would America’s Founders Say?

by Jonas Weiss

Freedom of speech and the press is one of the basic tenets of a democracy, enshrined in the First Amendment of the U.S. Constitution. Is it under attack in America today?

On Sunday, Dec. 3, Stephen D. Solomon, professor of journalism at New York University and founding editor of (FirstAmendmentWatch.org), lectures about this current and controversial topic.

He explores how the raucous political protest of the nation’s founding period gave meaning to the freedoms of speech and press at a time when the crime of seditious libel was used to punish criticism of the government.

Solomon is the author of the book, “Revolutionary Dissent: How the Founding Generation Created the Freedom of Speech.” He holds a bachelor’s degree from Pennsylvania State University and a J.D. from Georgetown University Law Center.



Stephen D. Solomon, courtesy photo

He teaches graduate and undergraduate courses on the First Amendment. His published articles have won two of the most prestigious awards for business writing – the Gerald Loeb Award and the John Hancock Award for Excellence, as well as the Hillman Prize.

His presentation is at 2:30 p.m. in the Clubhouse II auditorium. Lois Jordan is the host for the speaker.



**EMAJSS SALON**  
HAIR REPLACEMENT STUDIO

a full-service salon featuring exceptional styling and chemical services

exquisitely crafted wigs and hair replacement systems personalized to your needs

Salon Plaza @ Congressional North ■ 1527 Rockville Pike ■ Suite 106-108  
Rockville, MD 20852 ■ [www.emajssalon.com](http://www.emajssalon.com) ■ 301.881.4388



## Coming in 2017

The E&R Department is pleased to provide the following programs.

- Nov. 18, 9:30 a.m. Holiday Arts & Crafts Bazaar
- Nov. 30, 1:30 p.m. Steven Friedman: Broadway Musical Milestones
- Dec. 1, 6 p.m. Academy of Music Student Piano and Vocal Recitals
- Dec. 2, 5 p.m. Academy of Music Student Piano and Vocal Recitals
- Dec. 3, 6 p.m. Academy of Music Student Piano and Vocal Recitals
- Dec. 8, 10 a.m. St. John’s Episcopal School – Holiday Concert
- Dec. 9, 7 p.m. Akhmedova Ballet Academy – Nutcracker Night
- Dec. 17, 2 p.m. Olney Big Band
- Dec. 18, 7 p.m. Pianist Thomas Pandolfi – Holiday Concert

Watch Leisure World News for more information on these and other upcoming programs throughout the year.

**JML REMODELING**

### Kitchen & Bath Remodeling

**301-598-8400**

SERVING LEISURE WORLD SINCE 1988

Cabinetry, countertops, tile, custom carpentry.  
Safety First- Tub to Shower Conversions.  
Price match guarantee on all projects.

**NARI**  
NATIONAL ASSOCIATION OF THE REMODELING INDUSTRY

**MHIC# 36674**

**BBB**  
Start With Trust

*Wish You Were Here?*

*You Can Be!*  
We'll Match You with a Customized Vacation of Your Dreams!

We get to know you, your travel desires and budget. This allows our local, award-winning agents to personalize travel plans to your preferences — identifying resorts, cruises, land tours, air and hotel packages, rental properties, special events and amenities — and create your ideal vacation. We handle every detail, saving you time, money and stress.

Enjoy a **\$75 Travel Gift** when you book a trip 7 days or longer.  
gift offer expires 5/15/18

**EVA'S BEST TRAVEL**

Contact us today!

301-202-5124 • [Eva@EvasBestTravel.com](mailto:Eva@EvasBestTravel.com)  
[www.EvasBestLuxuryTravel.com](http://www.EvasBestLuxuryTravel.com)

**ASTA**  
AMERICAN SOCIETY OF TRAVEL AGENTS



Hearing is one of the joys of life. Don't neglect it!



From left: Kathryn A. Balestino-Estes, AuD., Cynthia Chrosniak, M.D., Jane Cooke, AuD., Nicholas Mehta, M.D., Heather Schwartzbauer, M.D.

We have a team of audiology doctors and otolaryngology physicians who work together in two convenient locations to help you.

MEET OUR AUDIOLOGISTS

Dr. Jane Cooke and Dr. Kathryn Balestino-Estes

- Comprehensive and personalized evaluations
- The latest digital hearing instruments from leading manufacturers
- Solutions to fit your hearing needs, lifestyle, and budget
- Many insurance plans offer hearing aid benefits
- Financing Plans available

We are conveniently located in the Professional Building in the Leisure World Shopping Center above Sandy Spring Bank.

**LEISURE WORLD PLAZA**  
3801 International Drive  
Silver Spring, MD 20906,  
Suite 206

**PROFESSIONAL OFFICE BUILDING**  
18111 Prince Phillip Drive  
Olney, MD 20832, Suite 224

CALL TODAY TO SCHEDULE AN APPOINTMENT!

301-774-0074

WWW.MONTGOMERYCOUNTYENT.COM

\$300 Off

a pair of digital hearing aids

\$400 Off

a pair of digital hearing aids when you upgrade your existing aids



Drs. Chrosniak, Schwartzbauer and Mehta, M.D.

Education and Recreation Department

Dec. 8: Holiday Concert



The St. Johns Episcopal School OASIS Musical Theater and Jazz Ensemble, courtesy photo

The St. John's Episcopal School OASIS Musical Theater and Jazz Ensemble are delighted to return to Leisure World with a Christmas concert on Friday, Dec. 8, at 10 a.m. in the Clubhouse I Crystal Ballroom.

Hear a medley of three favorite Christmas songs that includes Irving Berlin's "White Christmas," "Christmas Time is Here" by Vince Guaraldi of Charlie Brown fame, and "Let it Snow" by the legendary Sammy Cahn and Jule Styne that features a joint performance by the OASIS Musical Theater Ensemble and the Jazz Ensemble.

Listen as singers perform "Miss You the Most" by the incomparable Mariah Carey and "Holiday Road" by the popular Lindsay Buckingham. Tap your toes when the Jazz Ensemble

presents a happy combination of early 1950's boogie-woogie style and rhumba energy in an entertaining arrangement of "Jingle Bells."

And be enchanted as the concert concludes with a traditional presentation of "What Child is This" that features a very special group of youngsters who will recreate the Nativity scene in a tableau while the Christmas story is being told in verse and song.

Sponsored by the E&R Department, this holiday performance is free but tickets are required. They are available in both clubhouse E&R offices. Please bring your Leisure World ID.

The students of St. John's Episcopal School hope you will come and be a part of their Christmas celebration!

Education and Recreation Department

Dec. 9: 'Nutcracker Night'

The Akhmedova Ballet Academy (ABA) presents a magical "Nutcracker Night" on Saturday, Dec. 9, at 7 p.m. in the Clubhouse II auditorium. It will be an entertaining evening for all ages.

ABA's professional training program students present the most famous dances from "The Nutcracker" in one act that is sure to enchant.

The second act showcases classical masterpieces, contemporary and character choreographies.

ABA is dedicated to providing the finest quality ballet training for young dancers, preparing them to take their places in major companies. ABA is the place where all dedicated and gifted students can realize their



A dancer from the Akhmedova Ballet Academy, courtesy photo

dreams of having a professional career in dance.

Sponsored by the E&R Department, tickets for the performance are \$12 per person and available in both clubhouse E&R offices. Please bring your Leisure World ID.

■ Education and Recreation Department

## Dec. 17: Olney Big Band Returns

The Olney Big Band continues to carry on an important tradition in American music. The band returns to Leisure World on Sunday, Dec. 17, at 2 p.m. in the Clubhouse II auditorium, bringing its treasured big band sound to this holiday performance.

Although the big band scene faded significantly after 1955, the Olney Big Band has made a name for itself around the Washington metropolitan area as one of the best big bands playing dance, swing and jazz music.

In 2007, the band became the first big band whose members were certified as Ambassadors of Big Band Music by the Sally Bennett Big Band Hall of Fame in West Palm Beach, Florida, “for perpetuating, promoting, and performing with integrity the sounds of the Big Band Era.”

Sponsored by the E&R Department, tickets for the Olney Big Band concert are \$9 per person and go on sale in both clubhouse E&R offices on Tuesday, Nov. 21, at 8:30 a.m. Please bring your Leisure World ID.

■ Education and Recreation Department

## Dec. 18: ‘Holiday Spirit... Piano Works for the Season of Christmas’

The brilliant, young, international concert pianist Thomas Pandolfi returns to the Leisure World stage on Monday, Dec. 18, at 7 p.m. in the Clubhouse II auditorium. Ever wonder how it would sound if an international concert pianist performed music for the holidays? Virtuoso pianist Pandolfi performs a spectacular program entitled “Holiday Spirit...Piano Works for the Season of Christmas.”

The program opens with a medley of Irving Berlin’s “White Christmas” and Leroy Anderson’s “Sleigh Ride” followed by everyone’s favorite, “Christmas Time is Here,” from “A Charlie Brown Christmas.” The program is rounded out

by more traditional holiday favorites and a nod to Beethoven’s birthday (Dec. 16) with a performance of Grande Sonata No. 8 in C Minor, Op. 13 “Pathetique.”

If you are an aficionado of great piano music and Pandolfi, this is a concert you don’t want to miss. Let his brilliant artistry at the piano transport you into the spirit of the holidays!

Following the concert, Pandolfi will sign his CDs. They will be available for purchase, \$20 each, payable by credit card or check to Thomas Pandolfi.

Tickets are \$10 per person and go on sale in both clubhouse E&R offices on Tuesday, Nov. 21, at 8:30 a.m. Please bring your Leisure World ID.

## 2017 Movie Schedule

*Sponsored by the E&R Department*

Movies are FREE and shown for your enjoyment in the Clubhouse II Auditorium. Please pick up your tickets (limit two per person) on the date indicated below at either Clubhouse I or II. Please bring your Leisure World ID and remember tickets can go fast.

Show Date & Time	Movie	Tickets Available
Nov. 26, 2 p.m.	Wild Oats	SOLD OUT
Dec. 10, 2 p.m.	Manchester by the Sea	Nov. 21
Dec. 28, 1 p.m.	Rules Don’t Apply	Dec. 5

*Movies are subject to change.*

■ Education and Recreation Department

### *Sunday Afternoon at the Movies*

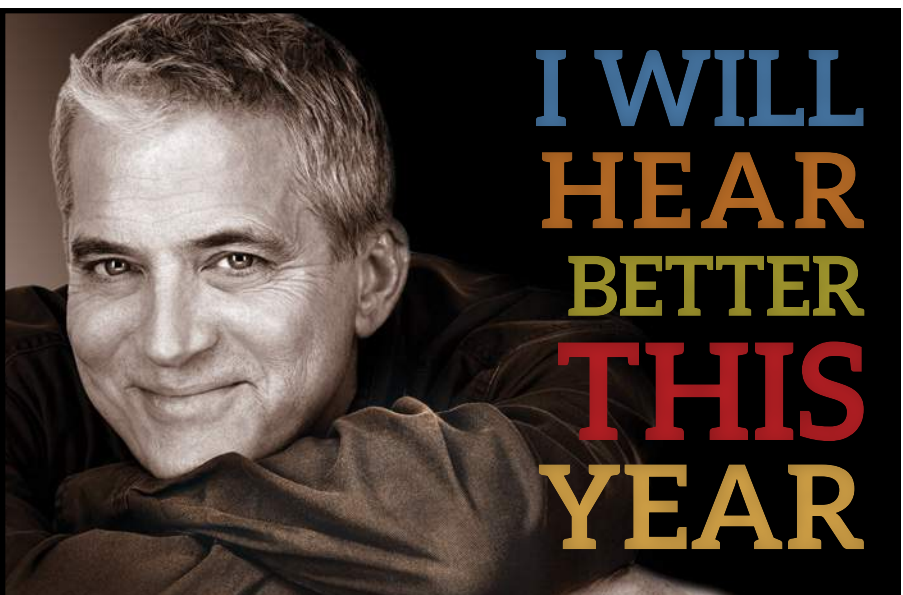
## Dec. 10: ‘Manchester by the Sea’

The E&R Department is pleased to present “Sunday Afternoon at the Movies.” The movies are shown at 2 p.m. in the Clubhouse II auditorium. On Sunday, Dec. 10, the featured film is “Manchester by the Sea” (2016, 2 hours 15 minutes, drama, rated R for language throughout and some sexual content).

Free tickets, limit two per person, are required and can be obtained from the E&R office in either Clubhouse I or II, beginning Tuesday, Nov. 21, at 8:30 a.m. Please bring your Leisure World ID.

While working as a handyman in Boston, taciturn loner Lee Chandler (Casey Affleck) gets word that his brother Joe (Kyle Chandler) has died of a coronary. After returning to the siblings’ hometown, Lee receives another shock: he’s been named legal guardian of Joe’s 16-year-old son Patrick (Lucas Hedges).

Sunday movie screenings are for your enjoyment; there is no charge. Be sure to pick up your ticket(s) in advance if you plan to attend. Please note that no one will be seated after 2 p.m.



At Hearing HealthCare, Inc., we truly believe that **better hearing leads to a better life.**

Call today to schedule an appointment. 301.637.7238

**\$500 OFF**

an AGX5, 7, or 9 two-device system. Expires 12/31/17.

**COMPLIMENTARY CONSULTATION**

Call today! Expires 12/31/17.

**Hearing HealthCare, Inc.**  
Doctors of Audiology  
Serving the community since 1996

Wheaton • 3913 Ferrara Dr  
Rockville • 2403 Research Blvd, Ste 100

HearingHealthCareInc.com

AudigyCertified™

# HEALTH & Fitness

## ■ Stroke Support Group

### Dec. 13: Annual Holiday Gathering

by Sally MacDonald

The Stroke Support Group's next meeting is on Wednesday, Dec. 13, at 1:30 p.m. in Clubhouse II. The meeting is the group's annual holiday gathering for sharing stories and fun memories of past holidays and traditions.

An important aspect of the group is the sharing of stories about experiences regarding

strokes. Some stories are educational, with information about symptoms, care and medicine. Other stories are inspirational, amazing, surprising and even amusing!

The Stroke Support group meets on the second Wednesday of each month. All are welcome to attend – stroke survivors and caregivers – along with anyone who has questions or concerns.



**Preserve Your Family Memories!**  
Photo Scanning by Kim

Personalized service at an affordable price  
Volume discounts available!

Call Kim at (301) 438-3140

Virtual Computer Services  
www.creative-alternative.com

## Wills, Wealth Planning & Trusts



**Luann Battersby**  
Leisure World neighbor  
3510 Chiswick Ct

Phone: 301-518-0423  
Email: Luann\_Battersby@comcast.net  
Housecall: No charge!  
www.battersbylawoffice.com  
Simple will: \$175/person; \$330/couple  
Living will/medical directive \$80  
Financial power of attorney \$90

Probate: flat fee or hourly, not a percentage of estate.

Estate and tax planning. I also assist clients in other related matters when they need my help.

## ■ Health Advisory Committee

### De-escalation: Dealing with Difficult People in Difficult Times

by Sandra McLeskey

Have you had someone “go off” on you after a fender bender? What about a family member who loses their temper? Even in the grocery store line, we may encounter someone who is “losing it.” So what should we do in such instances? How can we respond to make the situation better instead of worse?

On Friday, Dec. 8, at 1 p.m., in the Clubhouse II auditorium, Jim Gilmore, supervisory therapist at the Montgomery County Crisis Center, talks about how we can de-escalate a tense situation.

He presents calming

strategies that will make the antagonist feel less threatened and thereby less aggressive, and talks about preventive strategies to help keep things calm and prevent “meltdowns.”

Gilmore also informs attendees about the Crisis Center, its facilities and its mission. The Crisis Center is located at 1301 Picard Drive in Rockville and offers 24-hour in-person crisis intervention. People can visit the Crisis Center or call its hotline at (240-777-4000) during emergency situations.

This promises to be an informative talk that many residents can benefit from. No registration or tickets are required.

## Social Workers Can Assist with Medicare Open Enrollment

by Susan Montgomery

The Medicare Open Enrollment period runs through Thursday, Dec. 7. During this time, residents enrolled in Medicare can change their prescription drug coverage (Part D).

It is important for residents to evaluate their Medicare Part D plan every year, as formularies, prices and medications can change. Research the current plans online at ([www.medicare.gov](http://www.medicare.gov)).

Residents who need assistance in finding the appropriate Medicare Part D coverage for 2018 can contact the local Senior Health Insurance Program

office at (301-255-4250) and request a Part D Worksheet, or pick up a worksheet at Leisure World's MedStar Health medical center. Residents can also call Leisure World's Social Work department at (301-598-1581) for assistance.

The Maryland Senior Prescription Drug Assistance Program helps insureds pay the premium for their Part D coverage.

Residents whose total gross income is below \$35,310 (single) or \$47,790 (married) may be eligible for the year-round program. Applications are available at the Social Services department located in the MedStar Health medical center.

# FISH Collect Calendars and Other Items

by Beth Leanza

FISH is collecting calendars for a resident to distribute to local schoolchildren, as well as eyeglasses and hearing aids for the Lions Club and aluminum beverage can tabs for the Kiwanis Club.

FISH is happy to collect other items; contact Beth Leanza at (301-598-4569) for more information. A club or organization representative can place a collection box in the FISH office. Just remember to check back and get the items!

FISH also has information about sending other items to groups that can use them, such as greeting cards to St. Jude Ranch; unused/unopened medicines to World Medical Relief in Michigan and pill bottles to Matthew 25 Ministries in Ohio. Be prepared to pay postage.

## What is FISH?

FISH started in Leisure World in 1969 and has been serving the community ever since. Its mission is to lend assistive equipment to residents and employees of Leisure World. FISH receives used donations, including wheelchairs, walkers with

wheels, commodes that can be bedside or placed over the toilet, and tub stools.

The organization also receives donated canes, crutches, and easy reachers, which are happily given away. Other donations include incontinence items, blood pressure monitors, wheelchair pillows, and baskets and trays for use on walkers. FISH volunteers try to keep most of these items in the closet, so look around to see what is in there.

## Lost and Found

While in the closet, residents also see that FISH houses lost and found items that are turned in to the E&R offices.

If you lost something, keep in mind that some mutuels have their own lost and found collections.

One tip: place one of those mailing address labels on items like canes, so they are more identifiable.

## General Information

FISH is staffed by volunteers and is open Monday to Friday (except major holidays) from 10 a.m.-4 p.m. Contact FISH at (301-598-1345).

The E&R staff can assist residents before and after hours.

If seeking a Lost and Found

item and FISH is closed, be sure to let the E&R staffer know. He or she can also check the FISH closet.

## Red Hat Audiology

Audiology & Hearing Aid Services  
[www.redhataudiology.com](http://www.redhataudiology.com)

*If you are missing some of the simple sounds of life,  
Red Hat Audiology can help.*



At Red Hat Audiology we know the impact untreated hearing loss can have on your life. We want to get you back into conversations, and hearing the sounds you love.

### FREE 2 WEEK HEARING AID TRIAL

You've talked about hearing aids, you've even thought about them. Call and schedule an appointment now to come in for a Free Hearing Screening, and leave with a pair of hearing aids, programed to your needs and wear them for 2 weeks, FREE!

**Gwyneth Newcomb, Au.D., FAAA**

**Mary Adams, Au.D., FAAA**

Doctors of Audiology

3804 International Drive  
Silver Spring, MD 20906

**301-476-1705**

## Health & Fitness In Brief

**Al-Anon Meeting:** Al-Anon (for family and friends affected by alcoholism) meets Fridays at 2 p.m. at Our Lady of Grace Church Parish Center, near Leisure World. Enter through the back door (15661 Norbeck Blvd., Silver Spring). For more information, call Bridget at (301-598-3043).

**Alcoholics Anonymous (AA):** Newcomers welcome. (If you're from outside Leisure World, check in at the main gate.) Meetings are Mondays at noon (Step Meeting) and Thursdays at 6 p.m. (Big Book) in Clubhouse I. For questions, contact Laurie at (240-558-4454).

**Alzheimer's Caregivers Support:** The Alzheimer's Support Group meets the first and third Wednesday of each month at 3 p.m. in The Inter-Faith Chapel library. For more information, call Sunny at (301-438-2446).

**Bereavement Support Group:** If your spouse or long-term partner died in the recent past, you may be able to participate in a twice-monthly bereavement support group that meets on the first and third Tuesday of the month, 2-3:30 p.m., in the conference room at MedStar Health, 3305 N. Leisure World Blvd. Hospice Caring Inc. sponsors group meetings. Registration is required. If interested, please call Anne Baker at (301-990-0854).

**Essential Tremor Group:** The next meeting of the ET

group is Thursday, Dec. 7, at 10:30 a.m. in Clubhouse I. The group meets the first Thursday of the month.

**Free Blood Pressure Testing:** Come to Clubhouse I for free blood pressure testing, available on the first and third Tuesdays of the month from 9-11 a.m.

**Memory Café:** The next meeting of Memory Café is Thursday, Nov. 30. Memory Café meets the last Thursday of every month from 2-3:30 p.m. in Clubhouse I. The program provides social engagement for individuals living with early stage memory loss. For more information, contact Lindsey Vajpeyi at (240-428-1342) or (lvajpeyi@alz.org).

**Parkinson's Support Group:** The Leisure World Parkinson's Support Group was created under the auspices of the Parkinson Foundation of the National Capital Area to provide support to patients suffering from Parkinson's disease (PD) and their families and caregivers. The group meets the second Tuesday of the month at 3 p.m. in Clubhouse II. Usually there is a presentation by a speaker with knowledge about PD, physical therapy or some other related subject, followed by a period of Q&A. There are no memberships or fees to pay, and the meetings are open to anyone who may be interested. Questions? Contact Ray Weil at (301-598-3447) or (raywwjr@hotmail.com).

# CLUBS, GROUPS & Organizations

## ■ Model Railroad Club

### See the Trains Run at Winter Open House



A boy watches intently as model trains run at an open house in Clubhouse II last year. Photo by Alan J. Goldstein

by Alan J. Goldstein

The Model Railroad Club holds its Winter Open House on Saturday, Dec. 9, from 10 a.m.-3 p.m. in the lower level of Clubhouse II.

Come and bring your children and grandkids to watch the trains run. The Club's open houses are perennially popular, with more than 245 guests at the last winter event.

During every open house, the grandkids of residents, parents in tow, are transfixed as the trains go rumbling by. The Club's enormous HO gauge layout covers miles of scale terrain, passing industries, farms, towns and villages with trains delivering passengers and freight to their final destinations.

The Club even has a new, hidden train yard where rolling stock is stored while awaiting a switching engine to join cars with their assigned trains.

The Lionel O gauge layout brings residents back to fond memories of their childhood, with trains climbing grades and passing over bridges and through tall mountains. This is a layout that any youngster growing up in the 1950's would give up his Flexible Flyer for in a heartbeat.

Both the N scale and O gauge layouts have operating trolley cars that reverse direction at the end of their runs, and the N gauge unit stops along the

way to pick up and discharge passengers.

In addition to the Open House, the Club will install a large G gauge layout in the Administration Building on Wednesday, Nov. 29, which will remain in place throughout the holidays.

The Club meets the second Thursday of the month in Clubhouse II, and has working and operating sessions every Monday and Wednesday from 5:30-7 p.m., and Thursday from 2-4 p.m. at the train yards in the basement of Clubhouse II.

For further information or to join, please call Marilyn Chmielewski, president, at (301-438-3259).

## ■ Ballroom Dance Club

### Dec. 5: Annual Meeting



Residents Duke Park and Fumiko Baxter, first place costumed couple winners, dance at the Halloween Dance. Photo by Walt Hendrix

by Joyce Hendrix

All members are invited to the annual meeting on Tuesday, Dec. 5, at 10:30 a.m. in Clubhouse I. Suggestions for any future dances are welcome.

Membership renewals remain at \$10 per person for 2018 and are accepted at the annual meeting. This entitles members to pay \$10 per person, per dance. Non-member residents and guests pay \$15 per dance.

#### Halloween Dance

The Halloween dance was a great success with many members and guests in costume. Residents Duke Park and Fumiko Baxter won first place for best-costumed couple. Residents Beverly and Vivian Nation were second place winners. Resident Elaine Lissit won best singles costume, and guest Dora



Elaine Lissit takes first place in the costume competition's singles category. Photo by Walt Hendrix

McIntosh won second best.

#### Holiday Dances

Two ballroom dinner dances are held in December and require reservations and prepayment. The Saturday, Dec. 2, "Holly Ball" features The Tony Luciano Band. Make reservations with Billie Saunders at (301-822-4116).

The New Year's Eve dinner dance features Swing'N On A Star, and reservations can be made through any of the Leisure World restaurants by calling either (301-598-1330) or (301-598-1331).

#### January Dance

The Ballroom Dance Club's next dance is on Saturday, Jan. 27. The 2018 dance schedule is available at the annual meeting and at future dances.

## ■ Rossmoor Library Guild

### Examining 'The Bridge Ladies'

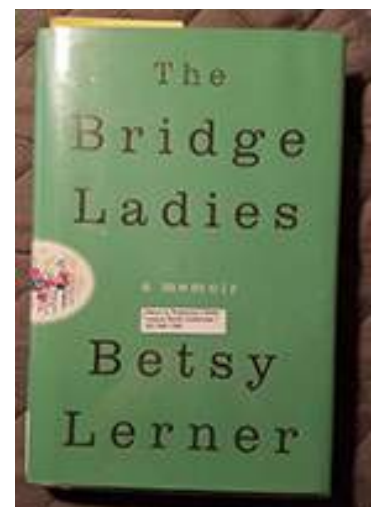
by Barbara Long

"The Bridge Ladies" by Betsy Lerner, available in the Clubhouse I library, is a work of nonfiction in which some of the names and characteristics of people who appear have been changed to protect their privacy.

Humor and impatience abound in this 2017 memoir written by a 50-ish "bridge daughter" who, as a young woman, failed to share her mother's love of the game.

As the story unfolds, Lerner learns the game and gains insight into her mother and her mother's friendships. The themes running throughout the book include mother-daughter conflicts and resolution, the changes that come with aging, and the relationships that center on a game of bridge played with the same women for 50 years.

By the end of the book, Lerner seems less alienated from her mother, "Roz." In writing the bridge ladies' stories, she seems to be resolving her own.



"The Bridge Ladies" by Betsy Lerner. Photo by Barbara Long



# Setting Ceramics Ablaze with Glaze

by Gail Bragg

Thanks to everyone who attended the Club's holiday open house. During some of the studio tours, people asked about glazes, including the basic glaze.

First, preheat the oven to 325°F, and then heat a mixture of corn syrup, honey and butter. Keep this mixture warm and periodically brush the glaze

over a scored ham, baking for about one hour and 15 minutes. Oh wait, that's the wrong recipe!

The fact is, while there are many ceramic glaze recipes, the Club buys its glazes premixed. Glazes in general are made from silica/frit (which turns to glass when heated), alumina (which makes the glaze viscous enough not to slide off the clay), and flux (which allows the glaze

to melt at the desired temperature).

Other compounds can be added for various colors. These compounds usually make the glaze appear one color before firing and another color after firing, so that what the ceramicist sees when glazing is nothing like what it will be after firing.

Even the "clear" glaze has a colorant added which burns off in the kiln, and the Club's kilns are not preheated. They aren't turned on until everything has been loaded and the lid closed. Then, the kilns are slowly heated to the desired temperature – around 1,825 to 1,950°F. Ceramicists wait a long while for the kilns to cool down before they are opened to reveal the final glaze color.



At bottom center, a moose-shaped refrigerator magnet painted with a pale blue glaze called Lotus Blossom; at top right, a cup with black glaze called Dragon's Breath; and at left, a Native American bust glazed with reddish Iron Ore. Ceramic pieces by various artists; photo by Gail Bragg

The Ceramics Club's \$10 annual membership fee includes instruction on how to make your own ceramic pieces. We welcome new members, so drop by our studio in Clubhouse II. You can view some of our ceramic pieces in the gift shop in our studio; they are for sale with proceeds going to charity. We hope to see you soon!

## Town Meeting Group Forming

by Richard P. Thornell and S.L. Katzman

A Town Meeting Group is forming in response to requests to continue town hall style meetings at Leisure World.

The town meeting concept is based upon the New England town meeting of the Colonial period. Relying upon the State of Maryland Homeowners Association statutory "right to assemble and discuss," the organization believes it is essential that residents be kept informed and involved.

The group will organize, schedule and conduct town meetings to educate and

involve the community about the five levels of governance that affect residents: federal, state, county, community (Leisure World Community Corporation and its subsidiary, Leisure World of Maryland Corporation) and local (29 Leisure World mutuals).

The group will provide residents an opportunity to express interest and become involved. All residents are invited to join and participate.

For information, please contact Richard P. Thornell, Professor Emeritus of Law, at (301-438-0180) or (rpthornell@comcast.net), or Natalie Brodsky at (301-598-2813) or (nataliebrodsky@hotmail.com).

**Special Sale - Buy 1 Meal and get the 2nd Meal Half OFF!**

**CHEF ON THE RUN®**

**301-990-7727**

**WE DELIVER!**

**EXPANDED MENU**

A HEALTHY ALTERNATIVE WITH OUR NEW MENU ITEMS. Too Tired to Cook? No Time to Cook? Let us prepare delicious meals for you. We deliver fresh food daily, very reasonable rates. No boring food. Only food with a bit of love sprinkled in. Gift certificates are now available. Ask for Dina.

Errand, shopping and companionship services also available!



**T-Mobile @ Cloverly Village Wants To Help!**

**T-Mobile is coming to Leisure World to hold a seminar on how to use your smart phones and tablets. All residents on any wireless carrier are welcome!**

**Lessons include organizing your home screen, using GPS navigation, setting up speed dialing, and much more!**

**Date: November 29, 2017**  
**Location: Clubhouse I**  
**Time: 10:30am-12:30pm and 5:00pm-7:00pm**  
**RSVP: Tamara G. (757) 508-1046**



**Unlimited 55+  
2 lines \$60/mo.**

Unlimited for a generation of rule breakers.

55yr old+ get 2 unlimited lines on America's best unlimited network for \$60/mo. with AutoPay.

■ Italian Social and Cultural Club

# Dec. 12: Opera Gala

by Florence Merola

The Italian Social and Cultural Club holds its annual holiday event on Tuesday, Dec. 12, in the Clubhouse I Crystal Ballroom. Festivities begin at 4 p.m. with a cocktail party and hors d'oeuvres.

All guests receive a complimentary glass of wine. Dinner includes filet mignon and lobster tail, a side potato and vegetable, salad and delicious Italian pastries for dessert. A chicken cordon bleu or vegetarian option may be substituted for the surf and turf.

Following dinner, the American Center for Puccini Studies presents a selection of arias from Puccini's autobiographical opera, "La Rondine," or "The Swallow." Although Italian at its very soul, the opera transcends all cultures by including the finest music from France and the Austro-Hungarian Empire.

Hearts will be swept away as the most Italianate of melodies evoke sentiments of love and loss. Performers include Harry N. Dunstan, principal tenor and founding director; Kay Krekow, principal soprano and managing director; and their students.

The price for this very special evening is \$35 for members and \$40 for guests. As always, all residents are invited. Mail checks, payable to Italian Social and Cultural Club, to Paul D'Angelo at (3310 Leisure World Blvd., Apt. 308 Silver Spring, MD 20906). Checks must be received by Monday, Dec. 4.

Those who wish to be seated with friends must make note of this on a separate sheet of paper and include it with their check. If choosing the chicken or vegetarian dinner option, please make note of this on the check.

For questions, please contact Flo Merola at (240-558-3119) or (flobender@aol.com).



**"In the rustling of the leaves and in the beauty of autumn, We remember them."**

Excerpt - Roland B. Gittelsohn

**No one has to do it alone.**

Someone who cares will always be here to help you with your funeral needs, in a supportive, caring way.



**Garden of Remembrance**

GAN ZIKARON MEMORIAL PARK

**17 YEARS OF CARING SERVICE AND DEDICATED SUPPORT TO THE JEWISH COMMUNITY OF GREATER WASHINGTON**

Call our Help Line today at (301) 428-3000, or visit [www.gardenofremembrance.org](http://www.gardenofremembrance.org).



■ Rossmoor Camera Club

# Members' Photos Featured at Holiday Party



"Goat Mountain" by Julie Friedman



"Red Berry" by Joanne Whitney



"Rainbow in Iceland" by Jim Cooper

by Fred Shapiro

Residents are invited to join the Rossmoor Camera Club at the Club's holiday social and meeting on Tuesday, Dec. 12, at 7 p.m. in Clubhouse II. The meeting features a digital presentation of members' photos. Refreshments are served.

Members are asked to email up to three of their favorite recent or old photos to Joanne Mars at (surveyrcc@gmail.com). The photos do not have to be those entered into competitions, and there are no editing restrictions.

The meeting is a good opportunity for members to highlight the variety of photos they've taken during the past year.

Non-members are encouraged to drop by the meeting to see what the Camera Club is all about.

**Upcoming Competition**

Members should prepare for January's open competition by shooting any subject; photo manipulation is acceptable. This should give the Club's Photoshop fans room to artistically alter the images they've captured.

February sees a return to normal Club rules for editing images, with a competition aimed at capturing photos of interiors of buildings.

For more information, visit the club website at ([www.rossmoorcameraclub.com](http://www.rossmoorcameraclub.com)).

## ■ Vegetarian Society of Leisure World (VSLW)

# Nov. 21: Holiday Dinner, Hold the Turkey

by Bob Fenichel

The group holds a dinner on Tuesday, Nov. 21, at 5:30 p.m. in Clubhouse II.

For December, the group is planning two luncheons at local vegetarian restaurants to facilitate informal interaction among members during the holiday season. The dates, times and places have yet to be determined.

Several group members attended the monthly potluck dinner of the Columbia MD Forks Over Knives Meetup group in Clarksville on Nov. 5. The video clip shown at this event was a 16-minute informal interview with popular cardiologist Dr. Milton Mills from Fairfax, Virginia. The clip is available at

(<https://www.youtube.com/watch?v=bOoR3PuQJ98>).

### General Information

Additional information on VSLW activities is found at ([www.vslw.org](http://www.vslw.org)). The group also has an email list, through which it makes last-minute announcements. Please contact Iris Wolf, secretary, at ([leonardbwolf@msn.com](mailto:leonardbwolf@msn.com)), if you would like to be added to this list.

Please note that everybody is welcome at VSLW activities; you don't have to be a vegetarian to participate.

The mission statement of VSLW is "to support group members in maintaining a healthy lifestyle by eating a plant-based diet."

## ■ Fun and Fancy Theater Group

# Dec. 6: 'A Christmas Carol' Comes to Life

by Hannelte Allen

Fun and Fancy Theater Group invites all residents to get into the holiday spirit at the group's next meeting on Wednesday, Dec. 6, at 7:30 p.m. in the Clubhouse II auditorium.

After a brief meeting, the group presents a radio adaptation of Charles Dickens' "A Christmas Carol."

Admission is free for members (there is an annual membership fee of \$10), or \$5 for non-members to attend a single time.

Refreshments are provided after the show. Those who are already members are asked to please wear their membership card when arriving.

At this time of year, Dickens' tale of redemption and hope is always welcome. Fun and Fancy's version is directed by Mary Jane Boyle and Stephen Bennof. The cast includes some members who aren't often on stage, plus some old favorites.

The group hopes to welcome one and all on Dec. 6 to share in the joy and inspiration!

### Play Readers

The new Play Readers has three groups with 39 members so far. The groups meet at members' homes, reading just for fun from provided scripts.

Anyone interested in joining should email Irene Shaulis at ([lis4972@verizon.net](mailto:lis4972@verizon.net)) to check on openings or to be placed on a wait list.

## In-Home or Office Computer Help

PC - Mac - Tablet - Smartphone



Hardware - Software - Network  
Wireless Troubleshooting

Virus - Spyware Removal

Data Recovery

# 301-495-3390

Press "2" if urgent

*Bob Mann*

[watzanetwork.com](http://watzanetwork.com)  
[helpme@watzanetwork.com](mailto:helpme@watzanetwork.com)



Serving the Leisure World  
community 10+ years  
5,000+ customer  
appointments!



• Insured

WatzaNetwork? is a service of Watza, LLC

## FREDRICK A. ISAACS, M.D., P.C., FACS BOARD CERTIFIED OPHTHALMOLOGIST

Latest Advances in Cataract Surgery including the Restor® & LenSx (Femtosecond)  
Treatment of Glaucoma & Macular Degeneration  
(Avastin, Lucentis & Eylea Injections)  
Complete Exams and Contact Lens Exams

### Full Service Optical Shop

Glasses, Sunglasses, Contact Lenses

We offer the latest diagnostic equipment for assessment  
of retinal disease and glaucoma.

**ON PREMISES:** Visual Fields, Cirrus HD - OCT,  
Fluorescein Angiography, Stereo Disc Photographs,  
Corneal Pachymetry and Topography.



**3801 International Drive, Suite 208**

**Silver Spring, MD 20906**

**301-598-8500**

LEISURE WORLD PLAZA PROFESSIONAL BUILDING

## EMERGENCY APPOINTMENTS AVAILABLE

# Members Venture Out to Juried Shows

by Ann Bolt

Rossmoor Art Guild (RAG) has been busy getting acclimated to the new term by trying new venues of exposure. They recently participated in the Community Fair, learning about pickleball and Unitarians and borrowing George Kaye from the Rossmoor Camera Club to snap a photo of the RAG booth.

Members are also venturing out to juried shows and getting recognized for their painting skills. Ann Bolt was awarded an honorable mention for her painting, "Tea with Grandma" at the Olney Art Association exhibit at Kentland Mansion in Gaithersburg. Ann Pielert was also awarded an honorable mention.

Annette Crowe entered her first painting in the Clubhouse I exhibit. Members skilled in pastel



Annette Crowe keeps busy with the brush. Photo by Ann Bolt



"White Flower" watercolor painting by Jeanette Shampain. Photo by Ann Bolt

and colored pencil are trying their hand at watercolor painting. Others are going from watercolor to oil painting, or trying out permanent ink, acrylic and alcohol ink, all in the same week. There is plenty to explore.

Steady and established artists continue to delight us with their paintings. Check out Jeanette

Shampain's floral painting, or Houston Hancock's rendition of a flatiron building from 1905. See who the best buddies are and don't miss the big sunflower by the Clubhouse Grille.

Fifteen artists are featured in this month's show, including Salma Ahmed, Maria Hernandez, Houston Hancock, Marvin Sirkis,



At left, RAG vice president Phyllis Lowinger stands with RAG president Ann Bolt, right, at the Community Fair Oct. 25. Photo by George Kaye

Teresa Milne, Jeanette Shampain, Patty Elton, Dee Williams, Kathy Hopkins, Violet "Vicky" Batkin, Ann Bolt, Loretta Morgan and Annette Crowe.

Nancy Albrecht and Maria Clark join Dee Williams, Patty Elton, Kathy Hopkins, and Ann Bolt in the Best Buddies collection.

This class term ends Saturday, Dec. 9, followed by a break. Classes resume Tuesday, Jan. 2. The Studio is available for member use during the break.

**SERENITY**  
Gardens assisted living

**It's Personal!**  
The most caring assisted living home with a 24x7 care that is so personal, you feel right at home.

10829 Burbank Drive, Potomac, Maryland 20854

10501 Bit and Spur Lane Potomac, Maryland 20854 | 18106 Cashell Rd, Rockville. MD 20853

Phone: 301-200-9275 | Fax: 800-521-9231 | [www.serenitygardensliving.com](http://www.serenitygardensliving.com) | [info@serenitygardensliving.com](mailto:info@serenitygardensliving.com)

**BP SERVICE**  
Carpet & Upholstery Cleaning

Commercial and Residential  
Pet Stain Removal, Gum Removal  
& Deodorize  
We Move and Replace Most Furniture

Houses/Apts/Offices/Churches/Daycares

**Benjamin Pena**  
Office: 301-942-8789 • Cell: 240-505-5213

**Personal Care Services In The Comfort Of Your Home**

Family Owned & Operated  
Serving Montgomery County

**BEST SENIOR CARE**

- Household chores
- Medication reminding
- Daily living and companionship
- Meal planning, preparation and monitoring of eating habits
- Overseeing activities, such as walking, to minimize the risk of accidents
- Shopping for groceries, with or without client
- Bathing and grooming and general personal hygiene
- Help with planning and making decisions
- Nursing services and many more!

**Call for a Free Consultation and Assessment • 301.717.2212 • [www.bestseniorcare.us](http://www.bestseniorcare.us)**

**CONTINENTAL MOVERS**  
Professional, Budget Movers Who Really Care

Local & Long Distance • Packing Services • Pianos and Big Objects  
Owner Operated since 1982 • References • Best Rates in DC  
\$80 x two men • Pickups / Deliveries

[www.continentalmovers.net](http://www.continentalmovers.net) • [CMops53607@msn.com](mailto:CMops53607@msn.com)

202-438-1489 | 301-340-0602

■ Democratic Club

# Dec. 14: Democrats to Pay Tribute to Isiah Leggett

by Emile Milne

On Thursday, Dec. 14, the Democratic Club hosts a special tribute honoring outgoing Montgomery County Executive Isiah “Ike” Leggett.

The event, open to all residents, begins promptly at 7 p.m. in the Clubhouse

I Crystal Ballroom. Arrive early to get a good seat. The event will be attended by many current and former Maryland elected officials and other associates of Leggett.

In October 2016, Leggett announced his intention not to seek a fourth term as County Executive next year.

A prominent figure in Maryland politics for more than three decades, “Ike” made history in 2006 as the first African-American elected Montgomery County Executive.



Montgomery County Executive Isiah Leggett, courtesy photo



■ Republican Club

# Nov. 21: Meeting to Discuss Proposed Bill

by Fred Seelman

At the Community Fair on Oct. 25, the Republican Club signed up several new members.

The next Club meeting is on Tuesday, Nov. 21, at 7 p.m. in Clubhouse I.

Do you like to go to the Montgomery County Fairgrounds? A bill has been proposed to the county council to limit educational shows and attractions involving animals. At the next Club meeting, Montgomery County Republican Central Committee member John O’Malley, who is involved in the dispute, will talk about it.

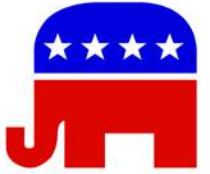
O’Malley has spoken at past Republican Club meetings. Come and listen to his presentation on the matter.

The Club will also hear a presentation on Maryland transportation plans.

Send comments or questions about these or any other Club

matters and/or offers to volunteer, to Club president Fred Seelman at (fseelman@gmail.com) or

vice president Ray Spieler at (301-460-3563). Join the Club at its next meeting on Nov. 21.



**Low interest rates getting you down? Let’s talk.**

**William P Mason IV, AAMS®**  
Financial Advisor  
17904 Georgia Ave Ste 107  
Olney, MD 20832  
301-774-8500  
www.edwardjones.com

**Edward Jones®**  
MAKING SENSE OF INVESTING

Member SIPC

“...A CELEBRATION TO MAKE EVEN THE MOST INCORRIGIBLE GRINCH GRIN.” - THE WASHINGTON POST

# The Christmas Revels

DECEMBER 9-17, 2017  
8 PERFORMANCES  
EVENINGS & MATINEES

GW LISNER AUDITORIUM  
WASHINGTON, DC

A FRENCH-CANADIAN  
CELEBRATION OF THE  
WINTER SOLSTICE IN  
MUSIC, DANCE & DRAMA

TICKETS  
**REVELSDC.ORG**  
Info: 301-587-3835

WASHINGTON  
**REVELS**

## ■ Jewish Residents of Leisure World

# Nov. 19: Brunch and Presentation

by Jonas Weiss

**A**t a Sunday, Nov. 19, brunch, Daryl Davis, author of “Klan-Destine Relationships: A Black Man’s Odyssey in the Ku Klux Klan,” explores his work with Ku Klux Klan members, seeking to improve race relationships.

His work was documented in the film “Accidental Courtesy.” Davis hopes to leave his audiences feeling empowered to overcome their fears and confront their own prejudices. The brunch is at 10 a.m. in Clubhouse I. Admission at the door, if available, is \$13, check only, payable to JRLW.

### Religious Services

Rabbi Fink conducts a Reform service in The Inter-Faith Chapel on Friday, Dec. 1, at 7:30 p.m., to be followed by socialization and refreshments at an Oneg.

Cantor Michael Kravitz leads a

Conservative service on Saturday, Dec. 9, at 9:15 a.m. in Clubhouse II. On all other Sabbaths, Rabbi Moshe Samber leads an abbreviated religious service with discussions of the Torah portion and a bit of the Talmud. These services are at 9:15 a.m. in Clubhouse II.

### Donations

For the Torah maintenance fund, mail checks, payable to JRLW, (minimum \$25) to Carol Wendkos at (14805 Pennfield Cir., Apt. 212).



Janet Lazar at (15311 Beaverbrook Ct., Apt. 1B) takes care of donations for prayer books (\$25 minimum).

Send donations for Kiddush or an Oneg (\$25 minimum for either), or Yiskor or general Tzedukah to Susan Weiss at (3739 Glen Eagles Dr., Silver Spring, MD 20906).

## ■ The Inter-Faith Chapel

# Nov. 22: Thanksgiving Eve Service

by Bonnie Bonner

**A**ll residents, families and friends are invited to the annual Thanksgiving Eve service held on Wednesday, Nov. 22, at 6 p.m. at The Inter-Faith Chapel.

The communities of The Inter-Faith Chapel, Our Lady of Grace Catholic Church, the Unitarian-Universalists of Leisure World, and the Jewish Residents of Leisure World (JRLW) gather together to give thanks for all our blessings.

The Chapel is pleased to welcome Father James “Jim” Boccabella, the newly installed priest at Our Lady of Grace, to deliver the Thanksgiving message.

JRLW member Edward Laskin will sing, “Bless this House.” The Inter-Faith Ringers will ring the prelude

music for the service.

A combined choir from the four communities provides music under the direction of Kevin Clemens and Dorothy Luksic.

Anyone interested in joining the combined choir is invited to contact Clemens at (301-598-5312) or (k.clemens@inter-faithchapel.org).

A freewill offering of non-perishable food and monetary donations will be given to Shepherd’s Table.

Since 1983, Shepherd’s Table has served those who are homeless or in need in Silver Spring and is supported by volunteers, religious organizations, government, businesses, foundations and individual donors.

A reception with light refreshments follows the service.



# Sip & Chat

with Franklin Richburg

A limited number of assisted living apartments are **now available at Riderwood**—but they’re selling quickly.



Don’t wait to learn more! Schedule your visit with Health Care Counselor Franklin Richburg to tour the available homes and discuss

the benefits of assisted living at Riderwood over a delicious mug of apple cider.

Call **301-637-2607** to schedule your visit.

The first 50 callers will receive a free copy of *Cruising through Caregiving* by Jennifer FitzPatrick.

**Now offering**

expanded hours on Thursdays and Saturdays!



**Riderwood**

Add more Living to your Life®

Silver Spring

RiderwoodCommunity.com



# Dec. 3: ‘The New Era of the Jewish Advocate’

by Barbara Eisen

**H**adassah Greater Washington presents, “The New Era of the Jewish Advocate,” on Sunday, Dec. 3, at 11 a.m. at the Bender Jewish Community Center of Greater Washington at 6125 Montrose Rd. in Rockville.

The event combines the group’s 2017 winter program and the installation of 2018 region officers. The \$25 charge covers a brunch and a program featuring Alan Ronkin, the regional director of the American Jewish Committee in Washington D.C., with 20 years of experience in the field of Jewish community relations.

Ben Werner, staff writer for the United States Naval Institute News, interviews Ronkin.

Please send a \$25 check, payable to Hadassah, to Hadassah Greater Washington at (11900 Parklawn Dr., Suite 350, Rockville, MD 20852) by

Friday, Nov. 24. For questions, call (301-881-8203).

## Judaic Studies Group

The Hadassah Judaic Studies Group meets on Monday, Nov. 20, at 1:30 p.m. in Clubhouse I. The topic is “Women Who Do (and Who Have Done)” – the women who are or have been outstanding in any field: art, music, theater, films, medicine, writing, politics, science, social work, etc.

Tell the group about someone who had an impact on your own life – a woman who represents the Hadassah ideal of women who can. All are welcome. Contact Peri Schuyler at (301-869-2968) or (peris-laptop@aol.com) for more information.

## Pin Sale

Hadassah continues the sale of one-of-a-kind pins, handmade by resident fabric artist, Bobbi Gorban. The

pins are \$18 each. There are three types: sunburst, vintage, and flower. All pins are made to order. Indicate your main preferred color(s) or any other special requests. Designs and colors are unique and will vary. All pins are approximately three inches in diameter and have pendant clasps. Order several for yourself, family and friends.

Order forms are available at each Hadassah meeting, or pick one up in the Hadassah mail slot in the Clubhouse I E&R office. For questions, contact Judy Rumerman at (judyrumerman@gmail.com) or (301-680-0850). You don’t have to be a member to buy a pin.

## Cards

Elaine Schenberg and Jan Bloom sell Hadassah greeting cards. The prices are \$2.50 each or five for \$10. Cards are displayed and sold at every Hadassah meeting. Please call Elaine at (301-598-0079) or

Jan at (301-593-7720) to buy cards between meetings.

## Project

Larelda Gruber (301-598-5922) is chair of Youth Aliyah/Children at Risk. This project helps disadvantaged children in Israel. The goal is to create a circle of \$1,000, made by individual contributions of \$40. Please send your donations to Larelda at (3200 N. Leisure World Blvd. #201, Silver Spring, MD 20906).

## General Information

Hadassah sponsors many activities to further the worthwhile projects it supports in medical, educational, and social programs in Israel and the U.S. If you are interested in knowing more about Hadassah, contact membership vice presidents Carole Sonneborn at (301-288-4902) or (carole200@comcast.net), or Mimi Meltzer at (301-806-0976) or (mimi20852@aol.com).

**FLOOR MAX**

DURACERAMIC now with SCOTCHGARD  
WILL NOT STAIN, WILL NOT FADE, WILL NOT WEAR OUT!

**10'X10' KITCHEN FLOOR**  
approx \$989 Installed \*

MUST BRING THIS AD  
to receive a FREE bottle of TECH STAIN REMOVER  
while supplies last

Carpet • Hardwood • Ceramic • Laminate • Vinyl • Bathroom Remodeling  
www.floormax.us.com

**The Flooring Professionals**  
Since 1985  
MHIC #41515

All Leisure World residents receive  
**FREE**  
in home estimates!

**Aspen Hill Shopping Center**  
(301) 460-4100

**\$250 OFF**  
any PURCHASE of \$3,000 or more!  
HURRY Sale Ends SOON!

\*(Limited time only. Cannot be combined with other offers. Must be presented at time of purchase.)

# Dec. 6: Game Day

by Carole Mund

All are invited to participate in an afternoon of fun and games on Wednesday, Dec. 6, at 12:30 p.m. in the Clubhouse I Crystal Ballroom. Delicious treats are served as attendees and friends gather to play board and card games.

Mah jongg, canasta, bridge, Scrabble, and rummy players are all encouraged to attend,

enjoy and support NA'AMAT at the same time. Mah jongg players are asked to please bring a tablecloth.

The cost is \$8 per person, \$5 of which is donor credit. Mail checks, payable to NA'AMAT RBZ Club, to Selma Perry at (15101 Interlachen Dr., Apt. 203, Silver Spring, MD 20906). Please indicate what game you are playing and the names of group participants. For questions, contact Selma at (301-598-4347).

### Mah Jongg Cards

NA'AMAT receives a small stipend from the Mah Jongg League for each card sold. Mah jongg cards are still \$8 for regular and \$9 for large. Please mail all checks, made payable to NA'AMAT, to Natalie Cohen at (15107 Interlachen Dr., #108, Silver Spring, MD 20906). The cards are sent to each individual purchasing, so please make sure all names and addresses are correct. For questions, call Natalie at (301-438-2663).

### New Year's Eve

On New Year's Eve, some Club members and residents are going to the Signature Theatre to see the award-winning Gershwin musical, "Crazy for You." Following the show, ring in the New Year with family and friends at a holiday dessert reception in Clubhouse I. For details, see the Club Trips section of this edition.

### Sunshine Program

When someone is sick or hospitalized, it is always meaningful to know that there are people who care. Marilyn Jordan, the Club's Sunshine chairperson, coordinates with Linda Schoolnick to have a card sent. If you know someone who is sick or hospitalized, contact Marilyn at (301-598-0174) and bring a little "sunshine" into his or her life.

### Tribute Cards

NA'AMAT is a charitable organization dedicated to helping NA'AMAT Israel provide educational day care programs, vocational training, legal aid for

women, services and assistance for new immigrants as well as centers for the prevention and treatment of domestic violence. Tribute cards are an excellent way to support and maintain these essential programs as well as attain donor credit.

NA'AMAT has cards to honor all occasions, from congratulations for a special event to memorial cards. Each card is \$3.50 if purchased and sent by you, or \$4.50 if sent by Linda Schoolnick, tribute chairperson. Full donor credit is given for each card. For questions, contact Linda at (301-681-1076).

### Trips

A cruise to Bermuda is planned for April. Call Trudy Stone at (301-438-0016) for more information. See Club Trips in this edition for details.

For more information about NA'AMAT RBZ Club, contact co-presidents Trudy Stone at (301-438-0016) or Gladys Blank at (301-438-9666).

**JOEL'S  
EXECUTIVE  
CAR SERVICE**

**301-438-9777  
301-980-4734 (cell)**

- Airport
- Trains
- Doctor Visits



**Get the Royal Treatment**  
Available 24 hours.



Memory Care *by design.*

## Building true friendships.

For those living with dementia, it's not the disease that defines the person — it's the relationships they establish along the way. As a resident at Olney Assisted Living, we encourage your loved one to maintain those relationships and develop new ones, too.

**Bond with your loved one in new and unique ways.  
Connect with Olney Assisted Living today.**

# 301.570.0525

16940 Georgia Avenue • Olney, Maryland 20832  
[www.olneymemorycare.com](http://www.olneymemorycare.com)

**Creating positive partnerships the Artis way**

Managed by



 An Equal Opportunity Employer-M/F/D/V



■ **Kiwanis Club of Leisure World**

# Members and Local Students Make Dolls for Pediatric Patients

by Jack Colvis

**K**iwanis Club members join with the Key Club members from Albert Einstein and James Hubert Blake High Schools to participate in a joint toy-making project on Saturday, Nov. 18, in Clubhouse I.

Participants are asked to form a toy doll assembly line to cut out cloth from doll patterns, and sew, stuff and pack handmade, finished dolls for delivery to children in pediatric hospital wards in the local area. A light lunch is provided.

Service-minded residents are invited to join in this activity by contacting Kiwanis Key Club advisors Heather Benjamin-Alexis at (240-433-0948) or Susan Leshner at (240-558-3110).

**What is Key Club?**

In 1925, Kiwanis established a service leadership program to encourage high school students to develop into community service leaders of tomorrow. Ever

since then, the Kiwanis Clubs of Kiwanis International have been establishing and sponsoring student-led high school clubs known as Kiwanis Empowering Youth (KEY) Clubs throughout the U.S. and around the world.

**Local Key Clubs**

The Kiwanis Club of Leisure World established two very active high school Key Clubs a number of years ago at Albert Einstein High School and James Hubert Blake High School. The student members of these clubs perform acts of service in their communities, such as collecting clothing, organizing food drives, holding fundraisers, reading to elementary school students, and volunteering in soup kitchens or elderly homes.

Through these extracurricular activities, they learn leadership skills by conducting meetings and planning projects. Each Key Club has a faculty advisor and a Kiwanis Club of Leisure World advisor.



■ **Rossmoor Woman's Club**

# Dec. 6: Holiday Luncheon at Manor Country Club

by Marcia L. Elbrand

**S**tart the festive season off elegantly with Rossmoor Woman's Club's (RWC) holiday luncheon on Wednesday, Dec. 6, at 12:15 p.m. at Manor Country Club, (14901 Carrolton Rd., Rockville).

Lunch options include chicken Marsala with mushroom and wine sauce, roasted salmon with lemon dill sauce, or sliced strip beef loin with green peppercorn sauce. Fingerling potatoes, asparagus, Caesar salad and hot dinner rolls accompany all entrees. Dessert is crème brûlée with berries and crème fraiche. Coffee, tea and lemonade are included. A cash bar is also available.

After dessert, Blake High School's string quartet, under the direction of Jonathan Eising, play several classical compositions and a montage of holiday music.

"If you are planning to invite guests, you can be sure that they will be favorably impressed with this talented group," said Rhoda Lawrence, program committee chairperson.

The reservation deadline is Friday, Dec. 1, and the cost of the event is \$35 per person for members and guests. Send

checks, payable to Rossmoor Woman's Club, to Carolyn Thompson at (15000 Pennfield Cir., #202, Silver Spring, MD 20906).

"Remember that this is a busy time of year for the postal service, so mailing early is important," Thompson said.

Include your entree selection, telephone number and name(s) of guests on the check, and be sure to also provide phone number(s) for each person registering. For questions, call Carolyn Thompson at (301-806-5383).

The event is open seating, so attendees are encouraged to arrive early to secure the number of seats needed.

**Helping Those in Need**

RWC also gathers household items on Dec. 6 for donation to A Wider Circle. Everyone attending the holiday luncheon is encouraged to bring items like paper towels, bathroom tissue, aluminum foil, laundry detergent and dishwasher detergent.

Personal care items, including toothpaste, soap, shower gel, and mouthwash, are also welcome. As in previous years, RWC volunteers expect to deliver several vanloads of donated items.

## Foot & Ankle Specialists of the Mid-Atlantic

Now the preferred podiatry practice at MedStar Health at Leisure World



**End your toes woes!**

**Walk pain-free!**

Visit Dr. K at MedStar Health at Leisure World, 3305 N. Leisure World Blvd., for treatment of your toes, heels, ankles and feet.

**Dr. Freedman & Dr. Kathrotiya-Mago**

Leisure World Plaza Professional Building  
3801 International Dr. • Suite 204 • Silver Spring, MD 20906  
[www.footandankle-usa.com](http://www.footandankle-usa.com)

**Call today: (301) 598-0130**



Please join us for a **Complimentary Educational Event** That will change the way you look at **Social Security!**

If you are 50 or over, you do not want to miss this Social Security Maximization workshop. Linda Daniels will discuss how to best prepare for electing your Social Security benefit that can make a difference of over \$100,000 in lifetime benefits!



Linda Daniels  
LifeTyme Financial

**November 29, 2017 7-9PM**  
**Clubhouse One**  
**Annapolis Room**

Please RSVP to this event by  
November 27th.  
Call 240 595 1538

**Did you know:**  
There are 567 ways to claim your SS benefits!

# Dec. 16: Holiday Dinner Dance

by Patricia Means

Put on your fashionable attire and join the Association at its annual holiday dinner dance on Saturday, Dec. 16, at 6 p.m. in

the Clubhouse I Crystal Ballroom. The Association honors Gloria Morris, a founder of LWAAAC, and Allyne Ike, a charter member.

Tickets, \$45 per person, are check only, payable to LWAAAC.

Tables of 10 may be reserved at the time of purchase. Ticket sales begin on Tuesday, Nov. 21, at 8:30 a.m. in the Clubhouse I E&R office.

This event is always a sellout, so get tickets early. No tickets are sold at the door. For more information, contact Sharon Boone, event chair, at (301-598-6217) or Elise T. Nicholls, program committee chair, at (301-384-8937).

## Afternoon Movie

The movie, "Rosenwald" is shown on Saturday, Nov. 18, at 2 p.m. in the Clubhouse II auditorium. Free tickets are available at the Clubhouse I and II E&R offices. All residents are welcome.

## Celebrations II

The Association wants all members to be listed on a patron page in the forthcoming Celebrations II book. Make it happen by donating now (checks only, payable to LWAAAC) via the LWAAAC mail slot in the Clubhouse I E&R office. Contributors

receive gifts of appreciation. For more information, contact Patricia Means, project coordinator, at (301-598-0550).

## Membership

The membership drive is ongoing at each meeting. Dues are \$20, check only, payable to LWAAAC, and covers the period of July 1, 2017 through June 30, 2018. Payment may be submitted via the LWAAAC mail slot in the Clubhouse I E&R office, or mailed to (LWAAAC, PO Box 12316, Silver Spring, MD 20906).

## Robocalls

The Association uses a robocall system to notify members of meetings and events. The robocall system is operated by Technology Solutions, Inc. on behalf of LWAAAC. The name, Technology Solutions, Inc., appears unannounced via the telephone ID program. Upon answering, there is a short pause before the start of the message. Please do not delete, block, or hang up, because it is a LWAAAC announcement.



## FAMILY FOOT & ANKLE ASSOCIATES OF MARYLAND

**Dr. Michael Frank**  
**Dr. Marc Goldberg**  
**Dr. Adam Lowy**

### 3 Convenient Locations Minutes from Leisure World

#### OLNEY

Oland Professional Center  
3408 Olandwood Ct. Suite 204  
Olney, MD 20832  
(301) 924-5044

#### KENSINGTON

Family Foot & Ankle Associates of Maryland  
3930 Knowles Ave Suite 202  
Kensington, MD 20895  
(301) 942-8110

#### SILVER SPRING

Colewood Centre  
10801 Lockwood Dr. Suite 260  
Silver Spring, MD 20901  
(301) 439-0300

[www.MarylandFeet.com](http://www.MarylandFeet.com)



Life is all about  
Choices...

...now is the time  
to make yours!

An engaged life is all about options. Whether your taste is contemporary or traditional, urban or eclectic, your home at Gardenside will be a reflection of your personal sense of style. Our wide range of floor plans offers the perfect space for you. Our one-, two- and three-bedroom selections feature open-concept floor plans with modern kitchens, generous closets, balconies, and large windows to welcome in natural light. With personalized customization available, your apartment will be the perfect place to call home.



**INGLESIDE**  
AT KING FARM  
ENGAGED LIVING  
An Ingleside Community

701 King Farm Blvd. • Rockville, MD  
[www.inglesidekingfarm.org](http://www.inglesidekingfarm.org)

*Call 240-398-3846 while you can still take advantage of  
Charter Club benefits and availability!*

*Ingleside at King Farm is a CARF accredited, not-for-profit, continuing care retirement community.*

*Ingleside at King Farm is expanding with the proposed building of 121 new independent living apartments, 32 private assisted living memory support suites, and a Center for Healthy Living, subject to approval by the Maryland Department of Aging.*



# Club Commemorates World AIDS Day

by Mike LaPoint and Pat Ritter

The Alliance hosts a game night every Wednesday at 6:30 p.m. in Clubhouse II. Bring a snack to share.

## Upcoming Events

On Saturday, Nov. 18, the Alliance holds its monthly club potluck and meeting. Join the Alliance at noon in Clubhouse II for some delicious food, and receive information about the Alliance and its upcoming events.

On Thanksgiving, Thursday, Nov. 23, the Alliance has reserved a table for the Thanksgiving buffet in Clubhouse I. If interested in joining the group for dinner, please email (celticwomen1@gmail.com).

Friday, Dec. 1, is World AIDS Day. The Alliance hosts a table in the Clubhouse I lobby to commemorate this day of remembrance, and to provide information on AIDS and safer sex recommendations.

Volunteers are needed to help with this project and staff the table. Email

(hannabear1@earthlink.net) for more information or to help out with this important project.

On Wednesday, Dec. 20, the Alliance hosts its annual holiday party, featuring a full meal, fellowship and lots of holiday cheer. This is a members-only event, and details will be emailed to Alliance members.

## Membership

Alliance membership is now open for 2018 and annual dues for the year are \$10. Contact a club officer or attend the monthly potluck meeting on Nov. 18 to become a member or renew membership for 2018.

## Past Events

The Alliance has had a busy autumn, with a flurry of activities and events. On Oct. 25, the Alliance hosted a table at the Community Fair, with information and resources for the LGBT community, family and friends.

Several members staffed the table, greeting the attendees and providing information

about the LGBT community and the Alliance.

On Oct. 28, the Alliance hosted a Halloween party with creative and colorful costumes and delicious desserts. The group had a showing of Mel Brooks' "Young Frankenstein."

On Nov. 1, the Alliance held its first weekly game night. Join the Alliance any Wednesday at 6:30 p.m. in Clubhouse II for a mid-week evening of fun and games. The group has a variety of games; feel free to bring a favorite game and snack to share.

At the Alliance's October board meeting, the board voted unanimously to become an official club sponsor of the Fireside Forum. The Alliance wishes to recognize the wonderful contributions that the Forum provides in enriching the community through its monthly lectures and presentations.

Residents who have questions or want to learn more about the Alliance are asked to email (celticwomen1@gmail.com), or attend the next monthly potluck meeting on Nov. 18.

## ■ Going It Alone Club

# Sign Up for 2018 Trips

by Elizabeth Brooks-Evans

The Going It Alone Club (GIAC) is a social club for single residents, and they are welcome to bring their single friends and neighbors along to join the Club and experience the fun.

GIAC meets every Saturday (known as Saturday Afternoon Live, or SAL!) beginning with armchair travel at 2 p.m. in Clubhouse II.

## Armchair Travel

On Saturday, Nov. 18, armchair travelers venture via video with well-known tour guide Rick Steves to Greece. Travelers start out by climbing 999 steps to the top of the Peloponnese Peninsula, which provides stunning seaside scenery, then take a visit to the ancient Mykonos Windmills, golden age temples, breathtaking ruins and more.

On Saturday, Nov. 25, while still in Greece, Steves takes the group island hopping on Aegean ferries to visit touristy Santorini and cruise on motorbikes around Samos and other picturesque islands.

## Games

Following travel, games begin at 2:30 p.m., with bingo played on the second and fourth Saturdays and Pokeno on alternate Saturdays. Rummikub, bridge and poker are played every week. Anyone wishing to join the game committee should contact Vivian Panda at (240-242-3587).

## Day Trips

All residents are welcome to join GIAC

for all its trips. As Club members thaw out after winter, they travel to Harrington Casino "where winners play" in Kent County, Delaware on Thursday, March 22.

The Club takes three trips in one to Carlisle, Pennsylvania for "High Tea" at Camellia's Sin Tea Parlor on Tuesday, May 22, with side trips to Meadowbrooke Gourds and Baugher's Orchards and Farm in Westminster, Maryland. On Tuesday, July 24, the Club travel to Sight and Sound Theater in Pennsylvania to see the musical, "Jesus."

## Multi-Day Trip

GIAC presents an exciting five-day trip to Cape Cod and Martha's Vineyard from Monday, June 4 to Friday, June 8, which includes a guided tour of Provincetown and Chatham, a visit to the Sandwich Glass Museum and JFK Museum, as well as the Eastham Windmill.

For more details about trips, contact Joe Parker at (301-598-3457) or Sylvia Pachenker at (301-598-5325), or see the Club Trips section of this publication.

## Membership

Those wishing to sign up for membership and/or trips can do so during SAL from 1:30-3 p.m. in Clubhouse II, when representatives can provide information and answer questions. Call Club president Marion Callaghan at (301-598-6779) for more information about membership. Callaghan would like members to meet for dinner (dutch) at the Terrace Room each week after SAL.



In-home care for a better quality of life.

Right at Home offers caregiving services for almost any family and practically any situation.

In-home care is the perfect choice for those who want to remain independent but are challenged by activities of daily living.

## Services We Provide

- Safety Supervision
- Personal Care & Hygiene
- Daily Health Reminders
- Meal Preparation
- Fall Prevention
- Laundry & Linens
- Light Exercise
- Transportation
- Shopping & Errands
- Light Housekeeping



301.255.0066  
www.rightathomemd.net

If you are a caring senior looking to earn extra income, call Right at Home for a flexible job with great benefits!

License#: 3345

# Safari Hints

by Brent Malcolm

Safari has many little-noticed tools that make the experience of browsing websites simpler and more satisfying. As an example, visit a busy news website such as (abcnews.go.com), find an article and, after it is clicked on, advertisements should appear. Now hover at the left end of the Address Box and a symbol with four short lines appears. Click on that symbol and the article is re-formatted without ads, to look more like a page in a book. This feature is called Reader. In High Sierra, the Macs OS takes this function one step further. In Safari Preferences > Websites tab, users can set Reader to be automatically enabled for individual sites or globally for all sites.

When using Reader, note the AA symbol at the right end of the Address Box. Click on that symbol to customize the font, the font size and the background

appearance of the article. Use Escape to exit Reader mode or click on the Reader icon again.

Safari also has a feature called Reading List wherein a website stored there can be read later even when not connected to the internet. Look at the Address Box again and move the cursor to the left side where a small + sign inside a circle appears just to the right of the Reader symbol.

Clicking it reveals a label, "Add page to Reading List." To access the Reading List to read a saved article, click the Sidebar Button that looks like Figure 1. Opening the Sidebar in High Sierra reveals two tabs: the right one, indicated by a pair of glasses, is the Reading List; the left one indicated by a book is your bookmarks.

Both the Reading List and Bookmarks are synced through iCloud, so users with another

device will see those items there as well.

## Toolbar Buttons

A few Toolbar buttons are also really useful. The Home button (with a house outline) always calls up the homepage, which is designated to appear every time Safari opens. Set the homepage by first going to the page, and then open Safari Preferences > General and click on the button, "Set to Current Page."



The AA Toolbar button allows users to increase or decrease the font size for the entire viewing tab. The Share button (a box with an up arrow) lets users manage the viewing page in all sort of ways: Add to Reading List, Add Bookmark, Email this Page, Messages, Air Drop, Notes, Reminders, Twitter, Facebook and More. The More selection actually lets users customize what appears

in this Share list. The All Tabs button (two squares superimposed) lets users view all the tabs open on one page.

## Apple Club News

Join the Club on Tuesday, Nov. 28, at 10 a.m. in Clubhouse II. Jim Ritz from MacRecycleClinic returns to discuss any pertinent issues Club members are having.

For more information, please visit the club's website at (<http://mac.computerctr.org>).

## Today's Tip – Remove Unwanted Email Addresses

Have you ever removed an email address from a contact, but still have it appear when addressing that contact in Mail?

To remove that address so it no longer appears in Mail, go to Window > Previous Recipients. Using the search window, locate the old address and click Remove From List.

Check Out My Client REVIEWS on Zillow.com

## It pays to work with an Authorized Leisure World Specialist

I offer you the highest level of personalized service and expertise.



### ACTIVE

**Greens F model**  
1,115 sf, 2 bedrooms, 2 baths, new carpet new paint, garage parking space  
List \$184,500



### CONTRACT

**Patio Home**  
1,305 sf, 3 bedrooms, 2 baths, all new paint, lam.floors, large Florida room, 3 garage spaces  
List \$392,500



### CONTRACT

**Greens G model**  
1,225 sf, 2 bedrooms, 2 baths, new carpet & paint, garage space, +private storage room  
List \$209,900



### ACTIVE

**Greens GG model**  
1,210 sf, 2 bedrooms, 2 baths, new carpet and flooring, separate laundry closet  
List \$172,995



### CONTRACT

**15316 Pine Orchard Dr**  
1st floor Warfield 2 bedroom, 2 bath. New carpet & paint. Walk-out to patio.  
List \$144,900

Call for a Free Market Analysis to find out what your home is worth!  
240-506-2434

## Barbara Michaluk | Weichert Realtors

Phone Direct 240-506-2434 / (o) 301-681-0550

Web: [BarbaraSellsMDhomes.com](http://BarbaraSellsMDhomes.com) | Email: [michaluk@verizon.net](mailto:michaluk@verizon.net)

Authorized Leisure World® Specialist / E Pro® Certified Senior Real Estate Specialist® / Certified Staging Agent® Internet Marketing Specialist® / Relocation Specialist®



Work with an Authorized Leisure World® Specialist

# Dec. 2: Holiday Potluck Party

by Beth Leanza

The Club holds a holiday potluck dinner party on Saturday, Dec. 2, at 5:30 p.m. in Clubhouse II. Bring a dish to share. Members who'd rather not cook are asked to pay \$10 to help with supplies. The Club also asks \$5 each to help pay the band. Members may also bring their own alcoholic beverages.

## Regular Activities

The Club screens a movie in the Clubhouse II auditorium each month, and sometimes goes out to dinner and a movie.

If you already know how to play mah jongg, join the group on Tuesday or Wednesday nights at 7 p.m. in Clubhouse II. For information, contact Donna Copeland at (dc@grandmathegeek.com).

## Friday Hikes with Dawn

Many walkers meet up at the walk site, but if you want to carpool, contact Dawn Carlisle at (301-598-7098) by Thursday evening. Always bring water to each hike.

Nov. 24 – Swain's Lock (Potomac). Meet in the parking lot next to the canal at 10:15 a.m. Bring water and a lunch. Go through the Norbeck gate and turn left onto Norbeck Road (Rte. 28). Continue straight as it becomes First Street, then Wootton Parkway. Turn left onto Seven Locks Road. Turn right onto Montrose Road. Turn left onto Falls Road (189). Go northwest (turn right) on River Road (190) for 2.2 miles. Then turn left onto Swain's Lock Road. The sign is easy to miss. Simply turn around and the sign for Swain's

Lock Road is evident. Continue down Swain's Lock Road to the parking lot next to the canal.

Dec. 1 – Rachel Carson Conservation Park (22201 Zion Rd. Brookville) Meet in the parking lot at 1:15 p.m. Bring water. Go north on Georgia Avenue to Route 108. Turn left onto Route 108. Go approximately two and a half miles; turn right onto Zion Road. Go approximately 3.2 miles. Turn right into the parking lot.

## Sunday Morning Walks

On Sundays at 8:30 a.m., another group walks the three-mile loop around Leisure World Boulevard, occasionally leaving Leisure World. They meet up at the corner of Leisure World Boulevard and Arden Court across from Kelmscot Drive. Sometimes they go out for breakfast after the walk.

## Weeknight Walks

From Monday to Friday at 5:15 p.m., a few Boomers meet in the Clubhouse I lobby to walk

the one-mile around the Broadwalk in Montgomery Mutual. Announcements are not made; so first-time walkers should introduce themselves.

## Volkssport Walks

One Club member belongs to the local American Volkssport Association (AVA) and updates the Baby Boomer Club's website with information on various walks. Some walks are seasonal and can be completed within a given date range, while others are preplanned, group events. Members can get information about them from a local "walk box." You don't have to be a member, but AVA does encourage members with awards. For more information, visit the Boomer's website and click on "Walks" below the calendar.

## How to Join

Baby Boomers enjoy going out together to theater productions, dinner and a movie, or holding events right in Leisure World. Some Boomers like to walk

together, or have game nights. If interested, come to an event!

Dues are \$5 per person, checks preferred, payable to Baby Boomer Club. Mail checks to Club president Pat Leanza at (15111 Glade Dr. 1B). Include your email address with your check. People joining now are paying for 2018. For questions, contact Pat at (301-598-4569).

The Club mostly communicates by email – reminders and invites to activities. Residents who don't email are asked to write "no email" on their check. The Club strongly urges members without email to connect with a member who does.

For more information about the Club, search for "BBCLWMD" in Google. The calendar lists Club events and information on various walking opportunities.

## Not Getting Emails?

Members who joined but are not receiving the Club's emails are asked to contact Beth Leanza at (301-598-4569) or (bethlea12020@gmail.com).

# "Fall" in Love



Paulette Tievny

LW Specialist  
Senior Real Estate Specialist

Direct 301-651-3082

Office 301-681-0550

www.myhomesdb.com/paulette



It's not hard to "Fall" in love with this fabulous community featuring a variety of homes and amenities to fit everyone's needs.

I have properties for every budget starting with garden apartments for under \$100,000 to a single family home for over \$600,000. There are many choices in between including 1, 2, and 3 bedroom high rise and mid-rise condos, and patio homes with garages. Let me show you all LW has to offer.

If you have a "burning" Real Estate question, I have the answer. Call me today!

**Listing & Selling In LW Since 1989**

**WE BUY VINTAGE**  
Speakers, Amps, LPs, Turntables, etc.

We come to you when possible  
301.881.1327

# 4 great reasons to consider buying a home today instead of waiting:

1. Prices Will Continue to Rise
2. Mortgage Interest Rates are Projected to Increase
3. Either Way, You are Paying a Mortgage
4. It's Time to Move on with Your Life

*If the right thing for you and your family is to purchase a home this year, buying sooner rather than later could lead to substantial savings. Call our office today to speak with one of our knowledgeable agents to assist you in today's marketplace.*

**LONG & FOSTER** | **CHRISTIE'S**  
REAL ESTATE | INTERNATIONAL REAL ESTATE

Long & Foster. For the love of home.®



**301-598-7500** Office  
Leisure World Plaza

3836 International Drive  
Silver Spring, MD 20906

## Writers of Leisure World

# About Hiking, Hunting and Acting

by Carlos Montorfano

In "Friday Hikes," Radha Pillai told the group that one of the best decisions she has ever make was to join the Easy Hikers' at Leisure World, because of the many beautiful trails located in close proximity. She described some of the trails her group hikes, and said that they even go by car to other interesting places in Washington, D.C.

Woody Shields reported on "The Deer Camp Experience," a very important part of the hunter's experience. It includes first becoming part of the group, where success in shooting a deer is the exception rather than the rule, to the tradition of the "Shirt Tails" where, after missing a shot, the hunter's shirt tail is cut off to excise the shooting demons.

Lee Hardy read a piece about current events about sexual abuse of women, situations

that can leave painful lifetime memories.

Jean Anessi read an interesting piece called, "My Choice of Animals." If she had a choice, she would like to be a thoroughbred stallion roaming around an enormous pasture in the peace and quiet of the countryside.

Tom Anessi read a true story about serving in the military and starring as an extra in the Steve McQueen movie, "The Sand Pebbles." His descriptions of this experience made the group feel as if they were part of the action.

Grace Cooper read another of her fine poems, "Façade," about a romantic encounter that ended on an ambiguous note.

Carlos Montorfano read a haiku called "Repaired." "I was defective/ til she came into my life/ and made improvements."

Meetings are on the first and third Thursday of the month at 11 a.m. in Clubhouse I. All residents are welcome.

## We Provide Compassionate Urology Care for the Residents of Leisure World.

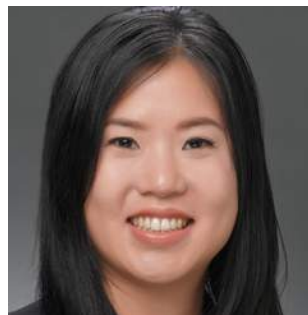
*Chesapeake Urology is conveniently located at 3801 International Drive in Silver Spring, just around the corner from Leisure World.*



**Richard A. Kurnot, M.D.**  
General Urology for Men and Women



**Bernard J. Rogus, M.D.**  
General Urology for Men and Women



**Cheryl Shih, M.D.**  
General Urology for Men and Women: English, Mandarin Chinese, Spanish



**Anup A. Vora, M.D.**  
General Urology for Men and Women: English, Hindi, Gujarati, Spanish

**Chesapeake**  
**UROLOGY**

*The most personal care for life's most personal issues.*

**301-598-9717**

**chesapeakeurology.com**

Prostate, Bladder and Kidney Cancers and Conditions • Kidney Stones • Erectile Dysfunction • Urinary Tract Infections • Pelvic Pain • Bladder Control Conditions • Enlarged Prostate  
Female Urinary Incontinence • Pelvic Organ Prolapse • IC/Painful Bladder • Pelvic Pain

# Leisure World Club Trips

The next deadline for trip submissions is **Monday, Nov. 20**. The trips listed below are sponsored by Leisure World groups and organizations and not by Eyre Leisure World Travel. These trips are **open to all residents**, not only members of the specific club. For information, contact the person listed with each trip. (Do not contact the Eyre Leisure World Travel or E&R office.) Leisure World clubs and organizations that want to be included in this column must provide a submission to the News by 3 p.m. on the Monday deadline. Due to space limitations, the Leisure World News reserves the right to edit or delete submissions. Email your trip information to [lwnews@lwmc.com](mailto:lwnews@lwmc.com).

**Please Note:** Member/Non-Member pricing is at the discretion of the individual clubs.

Dec.

31

## New Year's Eve Celebration Show and Dessert

NA'AMAT invites residents to join them in welcoming in the New Year. NA'AMAT starts the celebration by going to Signature Theater in Arlington, Virginia, to see the award-winning musical comedy, "Crazy for You." Following the performance, the group returns to Clubhouse I for a delicious dessert reception.

The cost is \$105 per person and includes theater tickets, reception, transportation, all tips and a donation to NA'AMAT.

The bus leaves from the parking lot adjacent to the Administration Building at 5:30 p.m. and returns at approximately 10:30 p.m. For further information, call JoAnn at (301-438-0737).

Mar.

22

## NEW Harrington Casino in Delaware

Come with the **Going It Alone Club** on a trip to Harrington Casino with \$15 in slot play and a \$7 buffet credit (at the discretion of the casino).

The cost is \$25 for Club members and \$32 for non-members. The bus leaves Clubhouse II at 10:30 a.m. and returns at approximately 6:45 p.m.

Sign up at Saturday Afternoon Live (SAL) in Clubhouse II from 1:30-3 p.m. If you have a casino card number, bring it with you at sign up. No refunds will be made after Saturday, Feb. 24, unless a replacement is made. For more information, call Joe Parker at (301-598-3457) or Sylvia Pachenker at (301-598-5325).

April

8-15

## NEW - Bermuda Cruise

Join NA'AMAT on a seven-night cruise to Bermuda on the Carnival Pride, leaving from Baltimore.

Cabin prices are: balcony \$1,897 per person, double occupancy; outside \$1,562 per person, double occupancy; inside \$1,472 per person, double occupancy. Pricing includes transportation to/from pier, insurance, gratuities, cruise fare, taxes and fees. Passport required.

Call Jill, Eyre Leisure World Travel, to reserve your cabin, at (301-598-1599) or (301-854-6600 x 3225). Questions? Call Trudy Stone at (301-438-0016).

May

22

## NEW - Camellia's Sin Tea Parlor and Meadowbrooke Gourds

Join the **Going It Alone Club** for High Tea in Carlisle, Pennsylvania. The tea includes salad, scones, petite sandwiches, desserts and seasonal teas. Then it's off to Meadowbrooke Gourds for a demonstration of crafting gourds into works of art.

*(continued next column)*

On the way home, we stop at Baugher's Farm Market in Westminster, Maryland, for a little shopping.

The cost is \$68 for Club members and \$75 for non-members. The bus leaves Clubhouse II at 10 a.m. and returns at approximately 8 p.m.

Sign up at Saturday Afternoon Live (SAL) in Clubhouse II from 1:30-3 p.m. No refunds will be made after Saturday, April 21, unless a replacement is made. For more information, call Joe Parker at (301-598-3457) or Sylvia Pachenker at (301-598-5325).

June

4-8

## NEW - Cape Cod & the Islands, Massachusetts

Join the **Going It Alone Club** for an excursion that includes Cape Cod, Martha's Vineyard, plus guided tours of Hyannis, Sandwich, Provincetown and Chatham, along with visits to the JFK Museum, the Sandwich Glass Museum and the Eastham Windmill.

The cost is \$460 for Club members and \$467 for non-members, double occupancy (\$135 additional for single occupancy). A \$200 reservation deposit is due at sign up with the balance due by March 31. Trip cancellation insurance is available at sign up.

Sign up at Saturday Afternoon Live (SAL) in Clubhouse II from 1:30-3 p.m. For more information, call Joe Parker at (301-598-3457) or Sylvia Pachenker at (301-598-5325).

July

24

## NEW - "Jesus" at Sight & Sound Theatre

Come with the **Going It Alone Club** to see the musical, "Jesus" at the Sight & Sound Theatre in Lancaster, Pennsylvania, with a smorgasbord lunch at the Bird-in-Hand Restaurant.

The cost is \$110 for Club members and \$117 for non-members.

The bus leaves Clubhouse II at 9:30 a.m. and returns at approximately 7:30 p.m.

Sign up at Saturday Afternoon Live (SAL) in Clubhouse II from 1:30-3 p.m. No refunds will be made after Saturday, June 30, unless a replacement is made. For more information, call Joe Parker at (301-598-3457) or Sylvia Pachenker at (301-598-5325).

## ATTENTION, TRAVELERS!

All Leisure World travelers please note that no group on travel can park more than 12 vehicles overnight/long-term in the Clubhouse II parking lot. Also, parking overnight/long-term is at the owner's own risk.

# Clubs, Groups & Organizations In Brief

**Amateur Radio Club:** Calling all hams! All resident amateur radio operators (hams)—or would-be operators—are invited to join our business meeting/lunch the second Tuesday of each month. We meet in the Stein Room in Clubhouse I at 1 p.m. For more information or to learn about amateur radio, call Bryan West at (301-598-0137).

**Book Club Network:** The network is a collection of book discussion groups of eight to 12 members each, providing a forum for residents to get together with other avid readers to read and discuss their favorite books. Members meet monthly to talk about a specific work chosen by their club. For further information, contact Verna Denny at (301-598-1418) or (verhd@msn.com).

**Clipper Workshop:** Recruiting is underway for members who can help assemble clown hand puppets for Holy Cross Hospital. They are used in the pediatric and emergency rooms. No special skills are needed. Some sewing skills are necessary. We need a sewing machine stitcher. Bring a bag lunch. (We will eat in the lunchroom.) We meet every first and third Monday in Clubhouse II from 10 a.m.-2 p.m., or any portion of the time you can devote to making a child smile. We are looking for donations of cotton fabrics, stuffing, thread and iron-on facing. Contact Joan Mahoney at (240-833-2724) or Jane Brinser at (301-438-2599) for further information.

**Hispanos de Leisure World:** We invite all residents who are Hispano-Parlantes to join us in enjoying the activities of this club, including card games and conversations, every Friday at 3 p.m. in Clubhouse I. Once a month, Latin American and Hispanic movies, with English subtitles, are screened at the same location and same time, 3 p.m. Also, the club organizes a Fiesta de La Amistad on a weekend in the spring and a Christmas dinner in December. And we have organized and presented musical shows about once a year in the Clubhouse II auditorium as well. If interested, contact Maria Blanco, club president, at (301-847-9066) or Carlota "Loty" Goldenberg at (301-598-6869).

**Jewish Discussion:** Hello to all Jewish residents of Leisure World. A discussion group meets on the fourth Sunday of every month (except July and August) at 10:30 a.m. in Clubhouse II. Be prepared for lively discussions about Israel and other topics of Jewish interest. Please give us a try; we think you'll like us.

**Knitting Corner:** Join us the second and fourth Fridays of each month at The Inter-Faith Chapel from 10 a.m.-noon. Our next meeting is Dec. 8. Bring your knitting and enjoy the conversations. We have patterns and yarn for your project. Yarn donations gratefully accepted. Call Joan at (240-833-2724) if you have any questions.

**Musical Jammers Club:** We gather informally once a month with other amateur musicians, singers and lovers of music to sing, play music and have fun – no dues, no meetings, no agendas, no committees. We meet on the second Monday of every month at 10 a.m. in Clubhouse II. All instruments and voices are welcome. You bring it; we'll sing it. Questions? Call Richard Lederman at (301-598-1132).

**Nextdoor.com:** A friendly place online to share tips and meet neighbors. We already have a record of success helping make Leisure World even better. Free. Please join our 780 members. Go to ([www.nextdoor.com/join](http://www.nextdoor.com/join)) and enter the code QHMxcf.

**The Philadelphians:** We meet on the first Sunday of the month at 11 a.m. in Clubhouse II by the fireplace. If you were born, raised, went to school or lived in Philly, you are welcome to join us.

**The Pittsburgers:** If you were born, raised or lived in Pittsburgh and/or the Greater Pittsburgh area, you are welcome to join us. For more information, call Tania Iwanowski at (301-598-2278) or email (Tania.Iwanowski@yahoo.com).

**Quilt Group:** Come and join our fun group as we work on our individual projects. We now include those interested in all needlework and knitting. We meet the second and fourth Thursdays in the Clubhouse II multipurpose room at 9:30 a.m. If you have any questions, call Clydis Kellough at (301-642-2430). Our next meeting is Thursday, Dec. 14.

**Stitchers Group:** Needlepoint, cross-stitch and more. If you enjoy stitching or would like to learn, we meet every first and third Thursday, from 10 a.m.-noon, in the Clubhouse II multi-purpose room. Come and share your finished work and enjoy stitching with us while we learn new skills together. Call Audrey at (301-598-4903).

**Short Story Group:** The Group reads from a collection of short stories and discusses them together. We are currently reading from "The Oxford Book of American Short Stories," 2nd edition, editor Joyce Carol Oates. On Wednesday, Dec. 6, Kathleen Kerwin leads a discussion of "The Mud Below" by Annie Proulx. On Wednesday, Dec. 20, George Stricker leads a discussion of "Are Those Actual Miles?" by Raymond Carver. The Short Story Group meets at 11 a.m. on the first and third Wednesdays of the month in Clubhouse I. For information, call Beth Leanza at (301-598-4569).

**Stamp and Coin Club:** Are you a philatelist or a numismatic? Join the Stamp and Coin Club. We meet on the first Thursday of each month at 3 p.m. in Clubhouse I. Members discuss their collections, including first day covers, day of issue programs, year-books, coins, medals and more. Stamps are shared for "show-and-tell," and we hold an auction of members' stamps. In addition, a gift certificate from Coins of the Realm in Rockville is awarded as a door prize at each meeting. All residents and non-residents are welcome to attend. Annual dues are \$5. If interested, contact Rita Mastrorocco at (301-814-9196).

**Wood Shop Users Group:** The wood shop is located on the lower level of Clubhouse I; the entrance to the shop is off Gleneagles Drive. It is open Monday through Friday, 9 a.m.-3 p.m. and Saturday 9 a.m.-noon. An experienced monitor is on duty when the shop is open to assist members with their work and provide instructions in the use of shop equipment. Members are often willing to repair and refinish projects for Leisure World residents. For further information, call (301-598-1308).

**Women in the Military:** Are you a female who has served in the armed forces? Join us as we shine a light on the role that women play in serving our country. We also strive to promote awareness of the Women's Memorial at Arlington National Cemetery, which celebrates its 20th anniversary in November. We meet every second Wednesday of the month at 10 a.m. in the Terrace Room. Call Barbara Long at (301-438-3427) for more information.



**LEISURE  
WORLD**  
OF MARYLAND



Find Leisure World of Maryland  
on facebook at:  
[www.facebook.com/  
LeisureWorldofMaryland/](http://www.facebook.com/LeisureWorldofMaryland/)



or follow us on Twitter:  
[@LeisureWorldMd](https://twitter.com/LeisureWorldMd)



# The Karen Rollings Team



**Karen Rollings**



**Kathy Workman**



**Sherry Felice**

**301-924-8200**

**www.TheKarenRollingsTeam.com**

BH  
HS  
BERKSHIRE HATHAWAY | PenFed Realty  
HomeServices

3410 N High St  
Olney, MD 20832  
301-260-7700



## Recent Solds "Around the World"!

Address	Subdivision	Type	Beds	Baths	Asked	Got	Subsidy
3330 LEISURE WORLD BLVD #5-805	FAIRWAYS SOUTH	Hi-Rise 9+ Floors	2	2	\$180,000	\$165,000	\$3,330
3342 CHISWICK CT #59-1B	LEISURE WORLD	Garden 1-4 Floors	2	1.5	\$120,000	\$118,500	\$2,100
15100 INTERLACHEN DR #4-302	LEISURE WORLD	Hi-Rise 9+ Floors	1	1	\$117,000	\$115,000	\$0
3406 CHISWICK CT #47-3C	MONTGOMERY MUTUAL COOP	Garden 1-4 Floors	2	1	\$90,000	\$90,000	\$0
3321 LEISURE WORLD BLVD #98-1A	MONTGOMERY MUTUAL COOP	Garden 1-4 Floors	1	1	\$54,000	\$54,000	\$0
3640 GLENEAGLES DR #10-2A	MONTGOMERY MUTUAL COOP	Garden 1-4 Floors	1	1	\$67,000	\$67,000	\$0
3282 GLENEAGLES DR #64-D	MONTGOMERY MUTUAL COOP	Patio Home	2	1.5	\$232,000	\$228,000	\$0
15111 GLADE DR #12-3A	ROSSMOOR MUTUAL #14	Garden 1-4 Floors	3	2	\$240,000	\$245,000	\$0
15400 BASSETT LN #46-2G	ROSSMOOR MUTUAL #15	Garden 1-4 Floors	3	2	\$199,900	\$193,000	\$0
15310 BEAVERBROOK CT #89	ROSSMOOR MUTUAL #19B	Garden 1-4 Floors	2	2	\$145,000	\$145,000	\$1,370
15210 ELKRIDGE WAY #91-2B	ROSSMOOR MUTUAL #19B	Garden 1-4 Floors	2	2	\$148,900	\$152,200	\$0
15115 INTERLACHEN DR #3-317	THE GREENS	Hi-Rise 9+ Floors	2	2	\$199,900	\$199,900	\$0
15100 INTERLACHEN DR #4-410	THE GREENS	Hi-Rise 9+ Floors	2	2	\$159,900	\$157,000	\$2,500
15101 INTERLACHEN DR #1-926	THE GREENS	Hi-Rise 9+ Floors	2	2	\$216,000	\$203,000	\$0
3210 LEISURE WORLD BLVD #1015	VANTAGE POINT WEST	Hi-Rise 9+ Floors	1	1.5	\$150,000	\$148,000	\$0
14809 PENNFIELD CIR #309	VILLA CORTESE	Garden 1-4 Floors	2	2	\$242,900	\$225,000	\$0
14809 PENNFIELD CIR #409	VILLA CORTESE	Garden 1-4 Floors	2	2	\$209,900	\$206,500	\$0



**FOR SALE!!!**

**3480 Gleneagles Dr, #79-C**

Two story townhome in the best location!  
Features 2 bedrooms and lovely patio!



**UNDER CONTRACT!!!**

**15300 Beaverbrook Court, #3H**

Our buyers found the perfect new place to call home! Call us TODAY to see how we can help you!



**FOR SALE!!!**

**15100 Interlachen Drive, #126**

2 Bedroom, 2 Full Bath condo with stunning views of the golf course!!



Monarch is proud to have been named "5-Star Superior Banking Institution"

MORTGAGE LOAN OFFICER  
Office (240) 403-1972  
skeenum@monarchmortgage.com  
600 Jefferson Plaza Suite 400  
Rockville, MD 20852  
NMLS # 459679



FitzGerald Financial Group  
Division of Monarch Bank

**Scott Keenum**

- ✓ Resident of Leisure World & represented Leisure World at the Maryland Senior Olympics winning a Silver Medal in Pickleball
- ✓ U.S. Army Veteran
- ✓ 30 Years of Experience in the Mortgage Industry

## Need New Carpet?

Serving Montgomery County for 30 years! We are the company for all your flooring needs. Carpeting, Hardwood, Laminate, Ceramic, Marble, Commercial, Residential. We do it all! We carry major brand names in carpeting and hard surface flooring.

**Trust our experience and knowledge of the industry.**

**301-924-7331**

18167 Village Center Drive  
Olney, MD 20832  
(in the Olney Village Center)

[www.carpetandvacuumexpo.com](http://www.carpetandvacuumexpo.com)

**CARPET & VACUUM  
EXPO**

**\$100  
off installation!  
301-924-7331**

only for purchases over \$1000. Offer not valid with any other offers.

# SPORTS, GAMES & Scoreboards

## ■ Golf Club

### Golf Results

Compiled by Rita Molyneaux

**Oct. 10, 2017**

**9-Hole Results**

**Step Aside Scramble**

- Jenny Wilson, Ursula Costa, Carol Lee Simms, Lois Kutun, 42
- Nedra Duffy, Lois Falck, Janet Danziger, Pat Weingart, 43

**Oct. 12, 2017**

**18-Hole Ladies**

**Best Net Ball Of Two**

- K.C. Choi, Pam Mulcahy, 67
- Mary Ko, Susan Kim, 68
- Christa Storm, Ursula Costa, 69

**Oct. 14, 2017**

**MISGA at Hobbit's Glen**

**Two Best Balls**

- Semoon Chang team, 127
- Doug Allston, Jim Flanagan team, 128

**Oct. 17, 2017**

**9-Hole Ladies**

**Low Net and Low Putts**

**Tournament**

**Low Net**

- Christine Petersen, 33
- Ruth Cougnet, 36
- Connie Park, 37

**Low Putts**

- (tie) Kazue Waller, Kay Heier, Ursula Costa, 17

**Oct. 19, 2017**

**18-Hole Ladies**

**Low Net and Low Gross**

**Low Net**

- Adrienne Tobin, 73
- Pam Mulcahy, 75
- Susan Kim, 77

**Low Gross**

- Christa Storm, 91
- K.C. Choi, 102
- Kazue Waller, 107

**Oct. 24, 2017**

**9-Hole Ladies**

**Two Best Ball of Four**

- Mary Lee Amato, Lois Falck, Nedra Duffy, 59
- Dee Smiley, Brenda Curtis-Heiken, Janet Danziger, Pat Lyddane, 60

**Oct. 25, 2017**

**Men's Closing Day Shamble**

- Ray Lombardi, Stephen Sherrod, Joe Genovese, Bob Rauner, 113
- Marty Kreiss, Dick Curtin, Ken Katkowsky, Harold Steinman, 118
- Robert Dibble, Bill Heyman, Alan Wilder, Malcolm Caponti, 119\*

\*Ties broken by back nine score

**Oct. 26, 2017**

**Step Aside Scramble**

**18-Hole Ladies**

- K.C. Choi, Mary Lee Amato, Janet Danziger, 75
- Judy Moffson, Adrienne Tobin, Connie Park, 80
- Susan Kim, Pat O'Connor, Kazue Waller, Muriel Peake, 83

## ■ 10-Pin Bowling League

### C.A.S.H. Advance Leads to Top Standing

by Rita Mastrorocco

As winter approaches the following bad weather rule is in effect: If Montgomery County schools are either closed or on a two-hour delay based on snow or icy conditions, we do not bowl.

The league is based on handicaps with averages for the bowlers ranging from 70 to 175. If you have not bowled in years, come out and join the fun.

The top League standings as of Nov. 3 are: C.A.S.H. in first place; Half and Half in second place; and Winners in third place.

**Top scores for the week of Oct. 27 are:**

- Scratch Game – Rolling Rocks, 646 pins
- Scratch Series – Hooks N Curves, 1,815 pins
- Handicap Game – Rolling Rocks, 930 pins
- Handicap Series – Pin Busters, 2,549 pins
- High Average Men – Steve Mueller, 175 pins
- Scratch Game Men – Bill Garrett, 254 pins
- Scratch Series Men – Steve Mueller, 542 pins
- Handicap Game Men – Bill Garrett, 312 pins
- Handicap Series Men – Charlie Johnson, 694 pins

- High Average Women – Chris Porter, 166 pins
- Scratch Game Women – Chris Porter, 182 pins
- Scratch Series Women – Chris Porter, 482 pins
- Handicap Game Women – Carroll Ann Fisher, 270 pins
- Handicap Series Women – Carroll Ann Fisher, 719 pins

**Top scores for the week of Nov. 3 are:**

- Scratch Game – Hooks N Curves, 690 pins
- Scratch Series – Hooks N Curves, 1,959 pins
- Handicap Game – Hooks N Curves, 927 pins
- Handicap Series – Hooks N Curves, 2,670 pins
- High Average Men – Steve Mueller, 178 pins
- Scratch Game Men – Steve Mueller, 215 pins
- Scratch Series Men – Chuck Martinez, 620 pins
- Handicap Game Men – Barry Potok, 269 pins
- Handicap Series Men – Chuck Martinez, 749 pins
- High Average Women – Chris Porter, 167 pins
- Scratch Game Women – Chris Porter, 192 pins
- Scratch Series Women – Chris Porter, 517 pins
- Handicap Game Women – Carroll Ann Fisher, 267 pins
- Handicap Series Women – Beth Leanza, 694 pins

You do not need to be a good bowler to join. Come and join us for fellowship, fun and easy exercise. There is no long-term commitment.

The league bowls every Friday morning with practice starting at 9:20 a.m. at Bowl America, 1101 Clopper Rd. in Gaithersburg.

The cost for the three games of bowling, the use of bowling shoes and balls, and unlimited cups of coffee is only \$10. If you are interested, please call Rita at (301-814-9196).

### A gazillion lovely colors = A gazillion autumn allergens!

Professional cleaning of your carpets, rugs & upholstery removes allergens & dirt for a sparkling, healthy home.

Special Discounted Prices for Our Leisure World Community

Don't be fooled by those \$99 offers!

Our professional, eco-friendly cleaning comes with a guarantee and has no hidden charges.



**Father & Son**  
**Carpet Cleaning & Repair**  
*We take care of your wrinkles and clean it, too!*



301-528-4444 • www.FatherAndSonCompanies.com

### Mark C. Wimsatt Painting

Interior/Exterior

**Leisure World References**

- Affordable Quality
- Excellent References • Free Estimates

**WINTER DISCOUNTS!**

**301-828-6500**

Serving Leisure World for over 30 years.

MHIC 10165 Bonded/Insured

## ■ Tuesday and Friday Duplicate Bridge

Compiled by Jerry Miller

For Tuesday games, Flight A includes all players. Flight B includes only ACBL member pairs, each with less than 1,000 master points.

**Tuesday, Oct. 24, 2017**

### North-South

#### Flight A

1. Patti Anschutz – Mary Lafferty
2. Reina Chassy – Paul Chassy
3. Diane Keiper – Nadyne Cheary
4. Lillian Taylor – Leonard Taylor
5. Mel Schloss – Arthur Podolsky

#### Flight B

1. Palma Seeger – Sue Swift

### East-West

#### Flight A

1. Gerald Lerner – Jerry Miller
2. Doug Brasse – Merrill Stern
3. Joe Boland – Howard Brewer
4. Hanna Schepps – Marlys Moholt
5. Marcia Fletcher – Ephraim Salins

#### Flight B

1. Doug Brasse – Merrill Stern
2. Marcia Fletcher – Ephraim Salins
3. Susan Weiss – Bernice Felix

**Friday, Oct. 27, 2017**

### North-South

1. Diane Keiper – Nadyne Cheary
2. Bernice Felix – Shirley Light
3. Leonard Taylor – Lillian Taylor
4. Joann Quinn – Betti Goodman

### East-West

1. Temma Kenowith – Aaron Navarro
2. Jim Cowie – Steve Billstein
3. Sue Swift – Susan Weiss
4. Saul Penn – Michael Kuehl

**Tuesday, Oct. 31, 2017**

### North-South

#### Flight A

1. Hanna Schepps – Marlys Moholt
2. Donald Jacobs – Robert Catlett
3. Ann Ruth Volin – Stephan Billstein
4. Lillian Taylor – Leonard Taylor
5. (tie) Doris Perschau – Mary Lafferty  
(tie) Diane Keiper – Nadyne Cheary

#### Flight B

1. Doris Perschau – Mary Lafferty

### East-West

#### Flight A

1. Rae Newman – Marcia Fletcher
2. Jerry Miller – Gerald Lerner
3. Betty Hollrah – Ann Parrott
4. Robert Kerr – Temma Kanowith
5. Patti Anschutz – Shirley Light

#### Flight B

2. Robert Kerr – Temma Kanowith
3. Patti Anschutz – Shirley Light

**Friday, Nov. 3, 2017**

### North-South

1. Aaron Navarro – Temma Kanowith
2. Roz Dixon – Victor Stewart
3. Joe Boland – Howard Brewer

### East-West

1. Lori Hegel – Sue Swift
2. Steve Billstein – James Cowie
3. Susan Weiss – Nancy Gordon

## ■ Wednesday Night Chicago Bridge

Compiled by Abigail Murton

**Oct. 25, 2017**

1. Anna Pappas, Bob Bridgeman, 6,390
2. Abigail Murton, Doug Brasse, 5,800
3. Dorothy Hurley, Dottie Donnally, 4,490
4. Sylvia Forman, Betty Hollrah, 4,270

**Nov. 1, 2017**

1. Virginia Pace, Joanne Bland, 5,090
2. Sylvia Forman, Betty Hollrah, 4,370
3. Marcia Elbrand, Monroe Elbrand, 3,680
4. Joan Joyce, Leloy Cottrell, 2,750

## ■ Thursday Afternoon Ladies Bridge

Compiled by Jackie Harrell

**Oct. 26, 2017**

1. Helen Montanaro, 4,960
2. Jackie Harrell, 4,410
3. Ruth Kozlow, 3,400

**Nov. 2, 2017**

1. Laura Wiltz, 5,090
2. Bernice Star, 4,300
3. Elaine Doser, 3,100

## ■ Friday Bridge

Compiled by Betti Goodman

**Oct. 20, 2017**

1. Betti Goodman, 3,010
2. Bob Stromberg, 2,790
3. Mort Farber, 2,300
4. Hymie Rosenberg, 2,080

**Oct. 27, 2017**

1. Gloria Kitzler, 3,080
2. Bernice Cohen, 2,440
3. Mort Faber, 2,310
4. Bill Cave, 2,250

# LEISURE WORLD®

55+ "Resort" Community

18 Hole Golf Course

Resident \$ 800 Annual Dues (No Green Fees)

Non-Resident \$ 900 Annual Dues (No Green Fees)

"Country Club Feel"



2017 To-Date - Oct 10th

**Sold: 18**

**Ratified: 2**

**Listings: 14**

*Please put my Winning Strategies to work for you and your Friends, Neighbors or Relatives*

**Your Referrals are greatly Appreciated**



**Douglas Brasse**

**Cell: (301) 448-8708**

[dbrasse@weichert.com](mailto:dbrasse@weichert.com)

Aspen Hill/ Leisure World Plaza

3816 International Drive

Silver Spring, MD 20906

Office Fax: (301) 598-9325

MAIN OFFICE: (301) 681-0550

Office Fax: (301) 598-9325

MAIN OFFICE: (301) 681-0550

[dougbrasse.com](http://dougbrasse.com)



**Authorized Leisure World® Specialist**

Leisure World® is a registered trademark owned by RRLH, Inc. Doug Brasse is authorized by RRLH, Inc. under license to use the Leisure World® service trademark

# AUTO BODY

*Rockville Central*

Just off East Gude Drive

**301-424-3500**

**FREE ESTIMATES  
IF YOU CAN'T COME TO US  
WE WILL COME TO YOU**

**SPECIAL OFFER**

- ⇒ Paintless Dent Removal from \$75
- ⇒ Free Pick up & Drop Off
- ⇒ Free Towing to Shop
- ⇒ Free Touch Up Paint
- ⇒ Lifetime Warranty on All Repairs
- ⇒ Special Discounts for LW Residents

**We Happily Handle All Insurance  
Claims for You**

**Ask for Richard or Tony**

# Giving Thanks for Chess

by Bernie Ascher

Thanksgiving is probably the least commercial of U.S. holidays. Little is spent on candies, costumes, trees and decorations, comparatively speaking. Spending is concentrated mostly on travel and overeating.

About 50 million Americans will travel 50 miles or more to be with family and friends, nearly 90 percent by automobile, according to a 2016 Washington Post article. It is a time for people to gripe about traffic congestion.

It is also a time for tradition and turkeys. We try to observe Thanksgiving the way it was celebrated at

Plymouth, Massachusetts, in 1621 by the pilgrims and Wampanoag Indians, who feasted on fowl (probably wild turkeys) and fish. According to some historians, 90 Native American Indians and



53 Pilgrims attended the first Thanksgiving. The feast lasted for three days.

George Washington, as leader of the Revolutionary forces in the American Revolutionary War, proclaimed a Thanksgiving

in December 1777 as a victory celebration honoring the defeat of the British at Saratoga. Over the years, various Presidents, including Washington, issued proclamations annually designating Thanksgiving as a November celebration.

It has been celebrated as a federal holiday every year since 1863, when, during the Civil War, President Abraham Lincoln proclaimed a national day of Thanksgiving to be celebrated on the last Thursday in November.

In 1939, when November had five Thursdays, President Franklin D. Roosevelt broke with tradition by proclaiming the fourth Thursday as Thanksgiving Day. Republicans criticized the change, calling it an affront to the memory of Lincoln. People began referring to Nov. 30 as the "Republican Thanksgiving" and Nov. 23 as the "Democratic Thanksgiving," or "Franksgiving."

Finally, in December 1941, Congress enacted a law designating Thanksgiving as the fourth Thursday in November – no longer a need for an annual proclamation.

Raising turkeys is big busi-

ness. This year, Americans are expected to consume about 46 million turkeys according to the University of Illinois Extension. Production is expected to reach 300 million. Turkey is hardly an endangered species, except on Thanksgiving.

Thanksgiving is also a time when we give thanks for what we have. Chess players, too, are thankful. By popular demand, here is a list of reasons to be thankful for chess.

1. It is safer than skydiving.
2. It requires only one other person to play, unless playing against a computer.
3. It is cheaper than playing the lottery.
4. It doesn't require costumes, uniforms or safety equipment.
5. It keeps our minds off snack foods and everything else.
6. It is non-political.
7. There is no need to hit or chase a ball.
8. You don't need to know a foreign language.
9. It can be done without the help of government.
10. It is not fattening.
11. It won't get you into debt.
12. It doesn't require a password.
13. It is unaffected by fluctuating prices.
14. It can be played without batteries.
15. It gives players something to teach their grandchildren when they teach us to use an iPhone or iPad.

Chess players at Leisure World do not need a national holiday to play chess. In the game pictured on this page, White's Rook is threatening Black's Queen. What is Black's best move?

The answer follows our usual message that the Chess Club meets Monday, Wednesday and Friday from 1-4 p.m. in Clubhouse II. For further information, call Club President Bernie Ascher at (301-598-8577).

ANSWER: Black's best move is to capture White's Pawn at h3 with the Queen. Checkmate!

So, do not wait for the fifth Thursday of the month. Do not wait for a three-day feast. Do not wait for traffic to ease. Play chess now!



## Holidays at RowanLark that Bed & Breakfast in Olney



Holidays at RowanLark are popular. They start filling up months in advance (Though we just had one Thanksgiving cancellation). If you

rooms and the local family joins in the fun during the day, into the night, finishing with a **nightly hot tub soak and visit around the firepit.** RowanLark has two

enjoys being together, cooking together and cleaning up together. It is a **stress-free** holiday for us. People talk about **what they love** about RowanLark. Some are enthusiastic about the history and **sleeping in FDR's room.** Others are fascinated by the huge **Sears-built** architecture, love the Mount Vernon-like porch or hanging out by



want to have your family all together at RowanLark, is there a way? Yes!

The Burke family has "**Thanksmas**" every year, which turns out to be Halloween, Thanksgiving, Christmas and birthday celebrations all rolled up into one fabulous long weekend. The **out-of-towners fill up the**

**full kitchens** which is a good thing as one holiday meal after another arrives in the big dining room. The weekend is capped off with a traditional Sunday morning breakfast cooked exclusively by the men of the family.

We love being on the periphery of the fun, enjoying the family that

the **salt-water pool.** *Everyone* says that they love the relaxed feeling of **being home** for the holidays at RowanLark.

**301-537-8298 \* 11 Shallow Brook CT. \* Olney, MD \* www.RowanLark.com**

Book on-line or over phone. **Rates start at \$120.** Breakfast & wi-fi included. Some spaces are dog-friendly. All have **private bathrooms.** FDR, on the ground floor, has a **wheel chair accessible** bathroom. **No smoking** indoors or near the house. Hot tub open year-round, salt-water pool open from May until September. **Visitors welcome.** Please call for a free tour. Take Georgia Ave. North, Left at the Backyard Naturalist on Morning Wood Drive, Right on Queen Elizabeth Rd, Left on Shallow Brook Lane, and left on Shallow Brook Court.

# Sports, Games & Scoreboards In Brief

**Bid Whist:** Do you know what Sport the Kiddy, Boston Time, Rise and Fly all mean? If you like the game Bid Whist and would like to play one day per week, contact Jessie at (314-374-4501).

**Bridge:**

• **Tuesday and Friday Duplicate Bridge** games are at 7 p.m. in Clubhouse I. New players with partners are welcome. Have fun. Win masterpoints. Questions? Call Nadyne at (301-598-5677).

• The **Wednesday Night Chicago Bridge Group** is looking for new members. The group meets every Wednesday in Clubhouse I. Play begins promptly at 6:45 p.m. Bring a partner and be ready for a few hours of friendly games. Questions? Call Doug at (301-448-8708).

• **Men's Bridge** seeks players. We meet Mondays and Thursdays at 12:30 p.m. in Clubhouse II. No partner needed. Please, no beginners.

• **Thursday Ladies Bridge** welcomes more card players. If interested, call Jackie Harrell at (301-598-4341).

**Cribbage:** We meet for 150 minutes of competitive fellowship Thursdays at 9:30 a.m. in Clubhouse II. We have cards and cribbage boards, and would be pleased to teach you the game. It is a mixture of rummy and pinochle and is pure fun. (We do not even keep score.) For more information, call George at (301-598-9747) or Bill at (301-598-7270). We look forward to seeing you.

**Ping Pong Club:** Get healthy exercise and camaraderie playing ping pong. The club meets every Wednesday and Friday from 1-3 p.m. in the Clubhouse II multi-purpose room. Drop in anytime during that period. Some experience preferred. If interested, call Julie Friedman at (301-598-5424).

**Pinochle Players:** If you enjoy pinochle, join us at Clubhouse II on Monday evenings, 6:30-8:30 p.m. Call us at (301-775-7238) or (301-598-7064).

**Poker:**

• A few poker game openings are available at the Greens, Thursdays 7-10 p.m. No prior experience necessary. If interested, call Marcel at (240-486-6205).

• **Men's Poker** is seeking new members. Play is daily, beginning around 9 a.m. in the Game Room in Clubhouse II.

**Jigsaw Puzzle:** There is a jigsaw puzzle table in the Clubhouse II lobby. Feel free, at your leisure, to work on it.

**Scrabble:** Please join us at Clubhouse II on Tuesdays at 12:30 p.m. for a game of Scrabble. Boards are available. Call Arlyne at (301-438-7442) if you are interested in playing.

**Duckpin Bowling:** Join us for the Duckpin Mixed Bowling League Mondays at 12:30 p.m. at White Oak Bowling Lanes (11207 New Hampshire Ave., Silver Spring). We need bowlers of all skill levels and will welcome you into our enthusiastic group. We carpool regularly, so non-drivers need not stay away. Call Grace White at (301-438-7892) or Flora Wolf at (301-598-5807) to join as a substitute or regular bowler.

**Indoor Pool Volleyball:** Experienced players are welcome to join a competitive game in the social pool at Clubhouse II on Mondays and Thursdays at 6 p.m. Basic volleyball skills are required. For beginners, social games are Wednesdays, Fridays and Saturdays at 3 p.m. If you don't have a yearly indoor pool pass, a \$3 ticket good for one pool session may be purchased at the Clubhouse II E&R office. Email Laurie Burdick at (lgburdick@aol.com) with questions.



## Let Sue Teach You

Choose the Professional with all the Strategic Teaching Aids...  
Floor Plans, Free Community Booklet, Preferred Riderwood Realtor

Top 1% of Agents Nationwide • #1 Lister in The Regency, Mutual 25  
Weichert Top Producer • Seniors Specialist  
Community Resident • Former Montgomery County Teacher



Email: [sueheyman@aol.com](mailto:sueheyman@aol.com) • Website: [www.sueheyman.com](http://www.sueheyman.com)  
Office: 301-681-0550



Sue Heyman

301-580-5556



JUST LISTED! \$449K

**Creekside "H" Model, Garage**  
2BR+den, 2FB, HWDs, exquisite kit w/ granite open to DR, both kitchen & DR w/ windows!



NEW PRICE! \$159,900

**The Fairways "E" Model**  
2BR, 2FB, fresh paint, new carpet, new cabinets & granite in kitchen, overlooks fountain!



FURTHER REDUCTION! \$269,900

**The Greens "M," Garage Space**  
Best value in The Greens, 3BR, 2.5BA, large encl. balcony, fresh paint, carpet, lighting, 1530 sf!



LISTING UNDER CONTRACT! \$86K

**"Calvert" Co-op Apartment**  
2BR, 1FB, enclosed balcony, new carpet, all utils included in monthly fee, assigned parking!



LISTING UNDER CONTRACT! \$388K

**The Overlook "M," Garage Spc.**  
Luxury 3BR, 2FB, gas fireplace & heat, balcony w/ tree-top view, fresh paint, extra storage!



LISTING UNDER CONTRACT! \$679K

**Regency "Arts & Crafts" Model**  
13-year young, 2-level, luxury detached home, 4BR, 3FB, great room, gas FP, deck, 2-car garage



LISTING JUST SOLD! \$99K

**"Hampton" Co-op Apartment**  
2BR, 1FB, full-size w/d in unit, all utils incl in monthly fee, assigned parking!



LISTING JUST SOLD! \$335K

**The Greens "L," Garage Space**  
3BR, 2FB, superb kit & BA renov, granite & stainless, all-season sunroom, upgraded HVAC!



LISTING JUST SOLD! \$389K

**"Easton" Patio Home**  
Twin owner's suites, 2FB, table-space kit., fabulous sunroom w/ green view, two-car garage!



LISTING JUST SOLD! \$425K

**"Barstow A" Patio Home**  
3BR, 2FB + sitting rm & sunroom, updated kitchen, 2-car garage, close to Norbeck gate, 1500 sf!

# CLASSES & Seminars

Sign-up will be taken for newly advertised classes beginning on the Tuesday after the date of the edition of Leisure World News in which it appears. All sign ups begin at 8:30 a.m. in either Clubhouse I or Clubhouse II as noted in the class description. Residents can register for themselves and two other residents. **Please bring your Leisure World ID.**

If required enrollment is not met five days prior to the start date, the class will be cancelled.

\*\*\***Please note fees for non-residents: add \$10 for 1-6 session classes and \$20 for classes of 7 or more sessions.**\*\*\*

Payment can be made by check or credit card (MasterCard, VISA or Discover); no cash is accepted. Checks *must* be made payable to Leisure World of Maryland Corp. Please sign up in advance of the starting date of the class since instructors need to know how many will participate. **Note: Registration will not be accepted nor refunds issued after the completion of two sessions!**

Leisure World does not discriminate on the basis of race, color, national or ethnic origin in admission policies, education policies or programs.

## EXERCISE

### NEW – Pilates, Stretch and Barre Class with Juliet:

This one hour class starts with some simple standing stretches and then a gentle Pilates chair workout, some standing simple-chair-assisted ballet exercises and a relaxing cool down. In this class, you are not required to get up and down off the floor; just wear comfortable clothes and bring water with you. You will progress at your own speed as you strengthen and tighten your arms and legs, and improve your core muscles through breathing and movement.

Anyone can benefit from Pilates and from stretching, and in this class you get both. Pilates is linked to better balance in older women with back pain, but most of all it's fun and will make you feel

absolutely fabulous!

Class meets Wednesdays, Dec. 13-Jan. 24, 2018 (no class Dec. 27), 3-4 p.m. **Fee: \$72. Register at Clubhouse I.**

**NEW – Move It or Lose It:** Enjoy dancing to the rhythm of a beat? These aerobic exercises will keep you moving and up on your feet.

Movements are designed to promote cardiovascular health while having fun. Warm up and cool down are designed to strengthen and tone.

Questions? Contact Betty Smith, Certified Group Exercise Instructor, at (301-598-4245).

Class meets Wednesdays, Nov. 29-Dec. 27, 4-5 p.m. **Fee: \$29. Register at Clubhouse II.**

**Chair Yoga with Robin, Wednesdays:** Age well. Prevent or diminish the chronic degenerative disease processes that frequently accompany

aging. Gentle, yet effective, movements done while sitting in a chair. Increase joint mobility, balance, flexibility, strength, tone, circulation of blood and lymph, and improve breathing. Optional standing balance exercises included. Relaxing and fun! Mindfulness training introduced and basic holistic lifestyle habits discussed.

Instructor Robin M. Hartman, C-IAYT, CHHC, RYT, PTA, is licensed to perform physical therapy in the state of Maryland. She is also a certified holistic health coach, registered yoga teacher, and certified yoga therapist. She will answer questions after class or can be reached at (240-350-8820).

Class meets Wednesdays, Nov. 29-Jan. 24, 2018 (no class Dec. 27), 2-3 p.m. **Fee: \$100. Register at Clubhouse II.**

**Move to the Beat, Evenings:** This class is for those who do not like to exercise but, as the doctors tell you, you have to keep moving. So grab a friend and let's have fun as we move by walking, stretching and dancing to music from the '40s on. (Singing along is allowed!)

All you have to do is follow Gerry as she leads you through your moves. Your moves are a little ballet, a little jazz, a little salsa, and more. Remember, your moves should always be done at a pace that is comfortable for you.

Sign up now for this fun, no pressure class. For more information, call Gerry at (301-438-

7452). Class meets Tuesdays, Dec. 5-Jan. 9, 6:15-7 p.m. **Fee: \$39. Register at Clubhouse II.**

### Stretch, Tone and Strength Training for the Active Adult (9:15 a.m.):

Join our fun exercise class that utilizes a variety of equipment for the active adult. This dynamic strength-training class will develop a body instilled with power and one that can move with ease and confidence. Get stronger, steadier, and more balanced as you develop new body awareness, flexibility and control of "usable strength."

Weights, bands, and balls are provided; and a mat is recommended for some floor work. Modification can be made for the individual exerciser and all are welcome to join in the fun. The instructor is Linda Ginsburg.

Class meets Mondays, Nov. 20-Jan. 16, 2018 and/or Thursdays, Nov. 30-Jan. 19, 2018 (no class Nov. 23 or Dec. 25), 9:15-10:15 a.m. **Fee: \$55, one day per week, \$85, two days. Register at Clubhouse I.**

### New Students Only – Stretch, Tone and Strength Training for the Active Adult (10:30 a.m.):

The early morning class is filling up! This class is for new students who want to join a fun exercise class that utilizes a variety of equipment for the active adult. This dynamic strength-training class will develop a body instilled with power and one that can move with ease and confidence. Get stronger, steadier, and more balanced as you develop new body awareness, flexibility and control of "usable strength."

Weights, bands, and balls are provided; and a mat is recommended for some floor work. Modification can be made for the individual exerciser and all are welcome to join in the fun. The instructor is Linda Ginsburg.

Class meets Mondays, Nov. 20-Jan. 16, 2018 and/or Thursdays, Nov. 30-Jan. 19, 2018 (no class Nov. 23 or Dec. 25), 10:30-11:30 a.m. **Fee: \$55, one day per week, \$85, two days. Register at Clubhouse I.**



**Call Now 240-245-0366**

### Affordable In-Home Care for Seniors


- Companionship
- Errands
- Grocery Shopping
- Medical Appointments
- Light Housekeeping
- Meal Preparation
- Hourly & Live-In Care available





**LW TOP OFFICE PRODUCER**  
LEISURE WORLD PLAZA  
**MAYNARD E. TUROW**  
AGENT 18 YEARS...LISTINGS, REALES, NEW SALES

**THINKING OF SELLING??  
Or Friends-Relatives Buying??**

Living in and working in this community, I give you the attention to detail your property needs to sell successfully. I know the marketplace and can bring you excellent results.



(O) 301-598-7500

**FREE BROCHURES, COMPS, LAYOUTS, INFO**  
Direct: 301-518-3834  
maynardturow@yahoo.com  
Website: MaynardTurow.LNF.com

# CALENDAR *of Events*

## Friday, November 17

### Clubhouse I

10:00 a.m. Drawing Clinic Art Class  
 10:00 a.m. Book Club Network – The Bookies and Diversity Strong  
 10:00 a.m. JRLW Seminar: Presidents as Leaders: From Carter to Trump  
 12:15 p.m. Kiwanis Club  
 1:30 p.m. Any Level Watercolor Class  
 3:00 p.m. Hispanos de LW  
 7:00 p.m. Friday Duplicate Bridge

### Clubhouse II

1:00 p.m. Ping Pong Club  
 1:00 p.m. Chess Club  
 1:00 p.m. Zumba Gold Class  
 1:00 p.m. Friday Bridge Club

## Saturday, November 18

### Clubhouse I

9:00 a.m. Gentle Yoga Class  
 9:30 a.m. Holiday Arts & Crafts Bazaar  
 10:00 a.m. Open Art Studio  
 10:00 a.m. Kiwanis Club: Sewing  
 7:30 p.m. Ballroom Dance Club

### Clubhouse II

9:15 a.m. JRLW Services  
 12:00 p.m. LGBT Alliance: Potluck  
 2:00 p.m. LWAAAC: Movie “Rosenwald”  
 7:00 p.m. Sock Hop Group

## Sunday, November 19

### Clubhouse I

10:00 a.m. JRLW Breakfast Forum

### Clubhouse II

Have a Wonderful Day

## Monday, November 20

### Clubhouse I

9:15 a.m. Stretch & Tone Class  
 10:30 a.m. Beginner Stretch & Tone Class  
 1:30 p.m. LW Chorale  
 1:30 p.m. NARFE: Health Roundtable  
 6:00 p.m. Lions Club  
 6:30 p.m. Duplicate Bridge: Newcomers  
 7:00 p.m. Bingo

### Clubhouse II

9:00 a.m. Senior Sneakers  
 10:30 a.m. Clippers Workshop  
 10:30 a.m. Zumba Gold Class  
 11:00 a.m. Chair Yoga Class  
 12:30 p.m. Men’s Bridge  
 1:00 p.m. Chess Club  
 2:00 p.m. Chair Yoga Class  
 2:00 p.m. Line Dance Class  
 3:00 p.m. Line Dance Class  
 4:00 p.m. Ba Duan Class

## Tuesday, November 21

### Clubhouse I

9:00 a.m. Blood Pressure Testing  
 10:00 a.m. Beginner Conversational Spanish Class  
 11:00 a.m. En Avant! French in Action Class  
 2:00 p.m. Book Club Network - Mystery  
 7:00 p.m. Duplicate Bridge  
 7:00 p.m. Trivia Group  
 7:00 p.m. Republican Club

### Clubhouse II

11:00 a.m. Water Exercise Class  
 11:00 a.m. Mild Exercise Class  
 12:30 p.m. Scrabble Group  
 1:00 p.m. Non-Impact Fusion Water Class  
 1:30 p.m. Comedy & Humor Club  
 5:30 p.m. Vegetarian Society  
 6:15 p.m. Move to the Beat Class

## Wednesday, November 22

### Clubhouse I

9:00 a.m. Gentle Yoga Class  
 10:00 a.m. Supervised Bridge Class  
 6:45 p.m. Chicago Bridge

### Clubhouse II

11:00 a.m. Mild Exercise Class  
 1:00 p.m. Chess Club  
 1:00 p.m. Ping Pong Club

## Thursday, November 23

### Clubhouse I

12:30 p.m. Thanksgiving Buffet  
 3:00 p.m. Thanksgiving Buffet  
 5:30 p.m. Thanksgiving Buffet

### Clubhouse II

Happy Thanksgiving Day

## Friday, November 24

### Clubhouse I

7:00 p.m. Friday Duplicate Bridge

### Clubhouse II

1:00 p.m. Ping Pong Club  
 1:00 p.m. Chess Club  
 1:00 p.m. Friday Bridge

## Saturday, November 25

### Clubhouse I

9:00 a.m. Gentle Yoga Class

### Clubhouse II

9:15 a.m. JRLW Services

## Sunday, November 26

### Clubhouse I

Have a Wonderful Day

### Clubhouse II

10:30 a.m. Jewish Discussion Group  
 2:00 p.m. Movie: “Wild Oats”

## Monday, November 27

### Clubhouse I

9:15 a.m. Stretch & Tone Class  
 10:30 a.m. Beginner Stretch & Tone Class  
 1:00 p.m. Paintbrush & Knife Art Class  
 1:30 p.m. Book Club Network – Fall Readers

### Clubhouse II

1:30 p.m. LW Chorale  
 7:00 p.m. Bingo  
 9:00 a.m. Senior Sneakers  
 10:30 a.m. Zumba Gold Class  
 12:30 p.m. Men’s Bridge  
 1:00 p.m. Chess Club Class  
 2:00 p.m. Line Dance Class  
 3:00 p.m. Line Dance Class  
 4:00 p.m. Ba Duan Class

## Tuesday, November 28

### Clubhouse I

9:30 a.m. Any Medium Art Class  
 10:00 a.m. Beginner Conversational Spanish Class  
 11:00 a.m. En Avant! French in Action Class  
 1:00 p.m. Water Color Techniques Art Class  
 2:00 p.m. Book Club Network - Mystery

### Clubhouse II

5:00 p.m. Lawn Bowls Club  
 7:00 p.m. Duplicate Bridge  
 7:00 p.m. Trivia Group  
 9:30 a.m. Beginner/Advanced Tai Chi Class

9:30 a.m. Quilters Group

10:00 a.m. LW Apple Club

11:00 a.m. Water Exercise Class

**Dial 301-598-1313**  
**for recorded Daily Events**

## Meetings of the LWCC Board of Directors, Executive Committee and Advisory Committees

### Energy

Nov. 21, 9:30 a.m. Clubhouse I

### Restaurant

Nov. 20, 10:00 a.m., Clubhouse I

### Golf and Greens

Dec. 1, 9:30 a.m., Clubhouse I

### LWCC Board of Directors

Nov. 28, 9:30 a.m., Clubhouse I

The meeting airs on Dec. 4, 6 and 8 at 4 p.m. and 7 p.m. on channel 974.

### LWCC Executive Committee

Nov. 17, 9:00 a.m., Sullivan Room

The meeting airs on Nov. 22, 23 and 24 at 4 p.m. and 7 p.m. on channel 974.

*Meeting times and locations subject to change.*

## Leisure World Mutual Meetings

### November 21

#### Mutual 14 Board

9:30 a.m., Sullivan Room

#### Mutual 13 Board

1:30 p.m., Sullivan Room

### November 22

#### Mutual 19B Agenda

1:00 p.m., Sullivan Room

### November 27

#### Montgomery Mutual Board

9:30 a.m., Clubhouse I

#### Mutual 23 Board

10:00 a.m., Party Room

#### Mutual 9 Board

10:00 a.m., Sullivan Room

### November 28

#### Mutual 17A Board

2:00 p.m., Party Room

### Mutual 21 Board

2:30 p.m., Community Room 3

### November 29

#### Mutual 20B Board

9:00 a.m., Community Room 3

#### Mutual 19B Board

1:00 p.m., Sullivan Room

### November 30

#### Mutual 20A Board

9:30 a.m., Party Room 1

#### Mutual 6C Board

9:30 a.m., Community Room

#### Mutual 26 Board

10:30 a.m., Party Room

#### Mutual 24 Board

1:30 p.m., Community Room

*Meeting times and locations subject to change.*

11:00 a.m. Mild Exercise Class  
 12:30 p.m. Scrabble Group  
 1:00 p.m. Non-Impact Fusion Water Class  
 1:30 p.m. Comedy & Humor Club  
 6:15 p.m. Move to the Beat Class  
 7:00 p.m. Camera Club

## Wednesday, November 29

### Clubhouse I

9:00 a.m. Gentle Yoga Class  
 10:00 a.m. Express Yourself Art Class  
 12:30 p.m. NA'AMAT RBZ Club: Book Discussion  
 1:00 p.m. Oils & Acrylics Art Class  
 2:00 p.m. LW Green  
 6:45 p.m. Chicago Bridge

### Clubhouse II

11:00 a.m. Mild Exercise Class  
 1:00 p.m. Aqua Fit Class  
 1:00 p.m. Chess Club  
 1:00 p.m. Ping Pong Club  
 2:00 p.m. Chair Yoga Class

## Thursday, November 30

### Clubhouse I

9:15 a.m. Stretch & Tone Class

10:00 a.m. Painting for Everyone Class  
 10:30 a.m. Exploring Ultra-Orthodox Judaism Class  
 10:30 a.m. Beginner Stretch & Tone Class  
 12:30 p.m. Ladies Bridge  
 1:00 p.m. Oils & Acrylics Class  
 1:30 p.m. Steve Friedman: Broadway Musical Milestones  
 2:00 p.m. Memory Café  
 2:00 p.m. Economics & Politics in the Age of Trump Class  
 3:00 p.m. Argentine Tango Class  
 5:00 p.m. Lawn Bowls Club

### Clubhouse II

9:00 a.m. Senior Sneakers Class  
 9:30 a.m. Beginner/Advanced Tai Chi Class  
 9:30 a.m. Quilters Group  
 11:00 a.m. Water Exercise Class  
 12:30 p.m. Men’s Bridge  
 1:00 p.m. Non-impact Fusion Water Class  
 2:00 p.m. Improving Your Digital Photographs Class  
 4:00 p.m. Model Railroad Club

**Friday, December 1**

**Clubhouse I**

10:00 a.m. Drawing Clinic Art Class  
10:00 a.m. JRLW Seminar: Presidents as Leaders: From Carter to Trump  
12:15 p.m. Kiwanis Club  
1:30 p.m. Any Level Watercolor Art Class  
7:00 p.m. Friday Duplicate Bridge

**Clubhouse II**

1:00 p.m. Ping Pong Club  
1:00 p.m. Chess Club  
1:00 p.m. Friday Bridge  
6:00 p.m. Academy Music – Piano & Vocal Recital

**Saturday, December 2**

**Clubhouse I**

9:00 a.m. Gentle Yoga Class  
10:00 a.m. Open Art Studio  
6:00 p.m. Holly Ball

**Clubhouse II**

9:15 a.m. JRLW Services  
2:00 p.m. Going It Alone Club: Social  
5:00 p.m. Academy Music – Piano & Vocal Recital  
5:30 p.m. Baby Boomers Club

**Sunday, December 3**

**Clubhouse I**

Have a Wonderful Day

**Clubhouse II**

10:30 a.m. Jewish Discussion Group  
2:30 p.m. Fireside Forum: Free Speech Under Attack  
6:00 p.m. Academy Music – Piano Recital & Vocal

**Monday, December 4**

**Clubhouse I**

9:15 a.m. Stretch & Tone Class  
9:45 a.m. AARP Driving Course  
10:30 a.m. Beginner Stretch & Tone Class  
1:00 p.m. Paintbrush & Knife Art Class  
1:00 p.m. CLL General Meeting  
1:30 p.m. Hadassah Judaic Study Group  
1:30 p.m. LW Chorale  
7:00 p.m. Bingo

**Clubhouse II**

9:00 a.m. Senior Sneakers  
10:00 a.m. Clipper Workshop  
10:30 a.m. Zumba Gold Class  
11:00 a.m. Chair Yoga Class

12:30 p.m. Men's Bridge  
1:00 p.m. Chess Club Class  
2:00 p.m. Line Dance Class  
3:00 p.m. Line Dance Class  
4:00 p.m. Ba Duan Class

**Tuesday, December 5**

**Clubhouse I**

9:00 a.m. Blood Pressure Testing  
9:30 a.m. Any Medium Art Class  
10:30 a.m. Ballroom Dance Club Annual Meeting  
11:00 a.m. En Avant! French in Action Class  
1:00 p.m. Watercolor Techniques Art Class  
2:00 p.m. Poetry for Poetry Lovers and Avocational Poets Class  
5:30 p.m. Unitarian Universalists: Holiday Party  
7:00 p.m. Duplicate Bridge  
7:00 p.m. Trivia Group

**Clubhouse II**

9:30 a.m. Beginner/Advanced Tai Chi Class  
11:00 a.m. Water Exercise Class  
11:00 a.m. Mild Exercise Class  
12:30 p.m. Scrabble Group  
1:00 p.m. Non-Impact Fusion Water Class  
1:30 p.m. Comedy & Humor Club  
6:15 p.m. Move to the Beat Class

**Wednesday, December 6**

**Clubhouse I**

9:00 a.m. Gentle Yoga Class  
10:00 a.m. Express Yourself Art Class  
10:00 a.m. MedStar Health Medical Center: New Providers Seminar  
11:00 a.m. Short Story Group  
12:30 a.m. NA'AMAT RBZ Club  
1:00 p.m. Oils & Acrylics Class  
2:00 p.m. Book Club Network – African Heritage  
6:45 p.m. Chicago Bridge

**Clubhouse II**

11:00 a.m. Mild Exercise Class  
1:00 p.m. Chess Club  
1:00 p.m. Ping Pong Club  
1:00 p.m. Aqua Fit Class  
2:00 p.m. Chair Yoga Class  
4:00 p.m. Move It or Lose It Class  
4:00 p.m. LWAAAC: General Meeting  
7:00 p.m. Fun & Fancy Theatre Group

**Thursday, December 7**

**Clubhouse I**

9:15 a.m. Stretch & Tone Class  
10:00 a.m. Painting for Everyone Class  
10:30 a.m. Exploring Ultra-Orthodox Judaism Class  
10:30 a.m. Beginner Stretch & Tone Class  
10:30 a.m. Essential Tremor Group  
11:00 a.m. Writers Workshop  
12:30 p.m. Ladies Bridge  
1:00 p.m. Oils & Acrylics Class  
3:00 p.m. Argentine Tango Class  
3:00 p.m. Stamp Club

**Clubhouse II**

9:00 a.m. Senior Sneakers Class  
9:30 a.m. Beginner/Advanced Tai Chi Class  
11:00 a.m. Water Exercise Class  
12:30 p.m. Men's Bridge  
1:00 p.m. Non-impact Fusion Water Class  
1:00 p.m. Gilbert & Sullivan Society

**Friday, December 8**

**Clubhouse I**

10:00 a.m. Drawing Clinic Art Class  
10:00 a.m. St. John Episcopal School OASIS Holiday Concert  
1:30 p.m. Any Level Watercolor Art Class  
6:00 p.m. Café AIM: Winter Solstice Party  
7:00 p.m. Friday Duplicate Bridge

**Clubhouse II**

10:00 a.m. Chinese Club  
1:00 p.m. Ping Pong Club  
1:00 p.m. Chess Club  
1:00 p.m. Friday Bridge  
1:00 p.m. Zumba Class  
5:00 p.m. Woodshop Users Group: Holiday Party

**Saturday, December 9**

**Clubhouse I**

9:00 a.m. Gentle Yoga Class  
10:00 a.m. Open Art Studio  
12:00 p.m. Lions Club Brunch  
**Clubhouse II**  
9:15 a.m. Shabbat Services  
2:00 p.m. Going It Alone Club: Social  
7:00 p.m. The Akhmedova Ballet Academy: "Nutcracker Night"

**Sunday, December 10**

**Clubhouse I**

10:15 a.m. Jewish War Vets  
**Clubhouse II**  
2:00 p.m. Movie: "Manchester by the Sea"  
6:30 p.m. Baby Boomers: Game Night

**Monday, December 11**

**Clubhouse I**

9:15 a.m. Stretch & Tone Class  
10:00 a.m. Garden & Environmental Club  
10:30 a.m. Beginner Stretch & Tone Class  
1:00 p.m. Paintbrush & Knife Art Class  
1:30 p.m. LW Chorale  
7:00 p.m. Bingo

**Clubhouse II**

9:00 a.m. Senior Sneakers  
10:30 a.m. Zumba Gold Class  
11:00 a.m. Chair Yoga Class  
12:30 p.m. Men's Bridge  
1:00 p.m. Chess Club  
2:00 p.m. Line Dance Class  
3:00 p.m. Line Dance Class  
4:00 p.m. Ba Duan Class

**Tuesday, December 12**

**Clubhouse I**

11:00 a.m. En Avant! French in Action Class  
1:00 p.m. Amateur Radio Club  
5:00 p.m. Italian Club: Christmas Dinner  
7:00 p.m. Duplicate Bridge  
7:00 p.m. Trivia Group

**Clubhouse II**

9:30 a.m. Beginner/Advanced Tai Chi Class  
11:00 a.m. Water Exercise Class  
11:00 a.m. Mild Exercise Class  
12:30 p.m. Scrabble Group  
1:00 p.m. Non-Impact Fusion Water Class  
1:30 p.m. Comedy & Humor Club  
3:00 p.m. Parkinson's Support Group  
6:15 p.m. Move to the Beat Class

**Wednesday, December 13**

**Clubhouse I**

9:00 a.m. Gentle Yoga Class  
10:15 a.m. League of Women Voters  
1:00 p.m. Diabetes Prevention Class  
1:00 p.m. Low Vision Support Group  
6:45 p.m. Chicago Bridge  
7:00 p.m. Lapidary Club: Dinner

**Clubhouse II**

11:00 a.m. Mild Exercise Class  
1:00 p.m. Chess Club  
1:00 p.m. Ping Pong Club  
1:00 p.m. Aqua Fit Class  
1:30 p.m. Stroke Support Group  
2:00 p.m. Chair Yoga Class  
4:00 p.m. Move It or Lose It Class  
7:00 p.m. Lapidary Club

**Thursday, December 14**

**Clubhouse I**

9:15 a.m. Stretch & Tone Class  
10:30 a.m. Exploring Ultra-Orthodox Judaism Class  
10:30 a.m. Beginner Stretch & Tone Class  
12:30 p.m. Ladies Bridge  
3:00 p.m. Argentine Tango Class  
7:00 p.m. Democratic Club  
**Clubhouse II**  
9:00 a.m. Senior Sneakers Class  
9:30 a.m. Beginner/Advanced Tai Chi Class  
11:00 a.m. Water Exercise Class  
12:30 p.m. Men's Bridge  
1:00 p.m. Non-impact Fusion Water Class

**Friday, December 15**

**Clubhouse I**

10:00 a.m. Book Club Network – The Bookies and Diversity Strong  
12:15 p.m. Kiwanis Club  
6:00 p.m. Hispanos de LW: Christmas Dinner  
7:00 p.m. Friday Duplicate Bridge

**Clubhouse II**

1:00 p.m. Ping Pong Club  
1:00 p.m. Chess Club  
1:00 p.m. Friday Bridge

**Saturday, December 16**

**Clubhouse I**

9:00 a.m. Gentle Yoga Class  
6:00 p.m. LWAAAC: Holiday Dinner Dance

**Clubhouse II**

9:15 a.m. JRLW Services  
1:00 p.m. AIM: Poetry Contest  
2:00 p.m. Going It Alone Club: Social  
7:00 p.m. Sock Hop Group

**Sunday, December 17**

**Clubhouse I**

10:00 a.m. JRLW Breakfast

**Clubhouse II**

2:00 p.m. Olney Big Band Performance



**JOHN J. FERGUSON, ESQ.**  
**FERGUSON & WILPON**

**ESTATE ADMINISTRATION/PROBATE**

**WILLS POWERS OF ATTORNEY LIVING TRUSTS**

**REAL ESTATE MEDICAL DIRECTIVES/LIVING WILLS**

**CALL JOHN FERGUSON**  
**301-570-3633**

**3406 Olandwood Court, Ste. 202, Olney, MD 20832**  
**WE CAN MEET IN YOUR HOME OR OUR OLNEY OFFICE**



# THANKSGIVING DINNER

**CRYSTAL BALLROOM**  
Thursday, November 23

- hand-carved roasted turkey breast
- sliced beef tenderloin medallions
- fresh broiled salmon
- hand carved honey ham
- fresh steamed green beans almandine
- mashed potatoes and gravy
- homemade traditional bread dressing
- whipped sweet potatoes
- caramelized brussels sprouts
- fresh steamed broccoli and cauliflower
- assorted cakes and pies

*\$27 plus tax and gratuity.  
For reservations,  
please call: 301-598-1330*

**Seating times:**

12:30 pm  
3:00 pm  
5:30 pm



## The Annual Holly Ball

Saturday, December 2, 2017  
featuring Tony Luciano

- 5:00 p.m. Doors open; cash bar available
- 5:30 p.m. Dinner with a choice of Beef tenderloin or Crab cakes
- 6:30-9:30 p.m. Dancing

\$68.00 per couple and \$34.00 for singles.

Reservations are required to attend and are accepted through November 15 by Billie Saunders at:

(301-822-4116) or (jbsaun2@aol.com)

Make checks payable to: Perrie LLC

Mail to: Billie Saunders

15100 Glade Drive, Apt. 11-2A  
Silver Spring, 20906

## ☾ New Year's Eve 2017 Crystal Ballroom

**MICHAEL BINDER  
AND SWING'N ON A STAR**

**Buffet dinner and ballroom dancing  
appetizers, dessert,  
and champagne toast**

**\$45 per ticket**

**Stop by the restaurants to purchase tickets at your  
convenience**



Clubhouse Grille Hours: Wednesday – Saturday: 4 p.m. – 10 p.m. | Brunch, last Sunday of each month: 10 a.m. – 3 p.m.  
Stein and Terrace Room Hours: Sunday: 9:30 a.m. – 8 p.m. | Monday – Tuesday: 9 a.m. – 8 p.m. | Wednesday – Saturday: 9 a.m. – 9 p.m.  
For Clubhouse Grille Reservations, call 301-598-1330 | For Stein and Terrace Room reservations, call 301-598-1331

# CLASSIFIEDS

THE LEISURE WORLD of Maryland NEWS reserves the right to reject or discontinue any advertisement believed inimical to the best interest of Leisure World. We shall accept advertising on the same basis as other reputable publications: that is, we shall not knowingly permit a dishonest advertisement to appear in the Leisure World of Maryland News, but at the same time we will not undertake to guarantee the reliability of our advertisers.

## ESTATE SALES

CASH FOR ESTATES; whole apartment contents, whole house contents, storage lockers. Buy out/clean up. atticllc.com Gary – (301-520-0755).

ATTIC TO BASEMENT ESTATE Cleanouts LLC - I provide honest and confidential estate cleanouts with reasonable rates. I assist executors, family members and guardians with a personal touch. I will save you time and money providing fast and efficient service. I work with local auction and hauling companies. Please call or email me to set up an appointment Janet Ray (301-384-3198), (wishalot10@aol.com).

## REAL ESTATE FOR SALE

A WISE CHOICE. Call me. Marilyn Rubinstein of Weichert Realtors. Your expert in this great community. Top 1% Nationwide. #1 Office Producer with over 40 years of experience and hundreds of sales right here. Call me for a free market analysis. Please call and we'll talk. I make buying or selling an enjoyable and successful experience. Call Marilyn today (301-674-1288).

THINKING OF SELLING your home or that of a relative? Call Sue Heyman of Weichert Realtors, Leisure World Plaza, community resident for over 13 years, Top 1% Nationwide, Senior & Relo Specialist, "Forward@50 Sponsor." 2016 has been a super year for real estate! Inventory is historically low. Days on the market for our community are less than one month. Prices are going up! Mid-year, I have already had 18 closings, with four additional properties under contract. As sellers, now is the time to take advantage of this fast-paced market. I know all the floor plans and how to price them. Tap into my experience, contractor connections, and marketing to get the best price. My top-quality color brochures, multiple websites, staging techniques, and virtual tours display your home and our community at its best. Call for your free competitive market analysis, (ofc: 301-681-0550), (cell: 301-580-5556).

## REAL ESTATE FOR RENT

BRIGHT, SUNNY 1BDRM garden apartment with private patio. 1st floor access – dishwasher, refrigerator, range/stove, garbage disposal, extra storage area. \$1150/mo. includes utilities and Comcast service. Call (978-501-2943).

## FOR SALE

PORTABLE, ROOM-SIZE AIR CONDITIONER/cooling, fan and dehumidifying modes, 14,500 BTUs, full function remote, 24-hour timer, easy roll casters, with quick-install window kit, NEW, in box. Orig. \$380; \$190 obo. (301-822-4774).

HUMIDIFIER, apartment size. Includes extra filters. \$100. (301-598-2469).

PRIDE ELECTRIC TRAVELER Go-Go electric scooter. 4-wheel; 2 new, long-lasting, electric batteries; charger and accessories. Barely used. Price - \$750. Call Bill (240-405-9870).

## CEMETERY PLOTS

GATE OF HEAVEN CEMETERY, Mausoleum Crypt with two spaces, Bldg. A, Courtyard B. Excellent location. Tier #C, Crypt 108; you can touch the granite. \$6,500! Cemetery price is thousands more. Please call Connie (301-633-1029) or email (connieschulien@yahoo.com).

## AUTO SALES

2002 CHRYSLER PT CRUISER. Power windows, new tires, new exhaust, one owner, clean Carfax, like new. MD inspected. Only 67,000 original miles. \$3,999. I will buy your car even if you don't buy mine. Dealing with Leisure World for 38 years. Licensed and bonded. Cash or cashier's check for your car, van or truck. Please call Marty Salins at Auto Plaza (301-325-1973).

## AUTO SERVICES

ARE YOUR HEADLIGHTS YELLOW, dull and hazy? Have you noticed your headlights aren't as bright as they used to be? Does your car look older than it is? Repair. Don't replace. Replacing headlight assemblies can be very costly and in most cases unnecessary. Call Mr. Headlight, (301-370-6983); we come to you. LW references available upon request.

## TRANSPORTATION SERVICES

YOUR PERSONAL DRIVER IS HERE: Lifelong local resident. Reliable, competent service. Comfortable, clean vehicle, can seat from 1 to 6 passengers. Airports, cruiseports, theatres, casinos, appointments...

Anywhere, anytime, including long distance trips to other states. Call with questions: Steven Saidman, cell/text (301-933-8899), email (Steve.Your.Driver@gmail.com).

CALL & RIDE – Doctors, airport, casino. Will pick up your groceries. Always on time. Over 50 satisfied customers from Leisure World. Larry Kraft (240-743-8287).

## HEALTH CARE SERVICES

The Leisure World News will allow only those advertisers who show proof of certification to advertise that they are "certified nursing assistants."

"A" HOME HEALTH CARE for Senior Citizens – Care you can trust and is affordable. Reliable and qualified aide and nursing staff available. Companionship, personal care, meds, housekeeping, shopping, driving. Full/part-time or live-in. Flat rate for live-in care. Call (240-533-6599).

ELDERLY CARE: Over 10 years experience. Great reference. Available for long days or nights. Can drive. Leisure World resident. (240-461-2188).

AIDE ASSIST & CARE "Caring for Today for a Brighter Tomorrow." Licensed CNA, CMT, CPR/first aid, food handlers. Services: companionship, errands, dr. appts, cooking, cleaning and everyday care. No job is too big or too small. Please call for further details and pricing. (240-573-6184) E. Scott

RELIABLE CAREGIVER/medication technician with CPR training helping clients with their food, laundry, housekeeping, shopping and other errands. Am a fun-loving and God-fearing person. Have a driver's license to help clients get to appointments. References available. Call Prisca at (202-899-0028).

PRIMARY CAREGIVER. Licensed CNA with Med Tech and CPR training. 20 years experience. Live-in preferred. \$4,000 per 5 days and 2 nights (Saturday and Sunday) for non-smoking client. MoCo area. English speaking. References available. Trustworthy, honest and caring. Brenda (240-277-0496, call or text).

EXCELLENT, CERTIFIED Nursing Assistant for the elderly. Years of experience; very knowledgeable; gentle touch. Call Michelle at (786-444-7995). (Reference - Peggy, LW resident, at 240-701-5870.)

LOVING, CARING PERSON. Have worked in Leisure World for 10 years. I am looking for a Full-time job, Monday-Friday. LW reference. Please call Alice (240-839-0087).

AT YOUR SERVICE! I'm a CNA who loves my work! I am available for new clients beginning 11/2017. I can assist with ADL (activities of daily living). I am happy to assist you at doctors' appointments, social outings, or to run errands. I also love animals and, if needed, available to walk, feed them. I look forward to hearing from you! Nora (240-888-0466).

PRIMARY CAREGIVER: CNA with a lot of experience. I know what it is to care for the elderly because I took good care of my mum and mother-in-law before they passed. I have MD driver's license. Am a very happy and God-fearing woman. Call Prisca (202-899-0028).

CAREGIVER looking to work for a family in need of assistance with an elderly family member with daily life, meal preparation, medication reminders and errands. My rate is \$20 per hour available for live-in, 12-hour shifts as well as weekends. Please call me at (302-333-9384) or email (gracesamuels21@gmail.com). Grace.

CAREGIVER WITH CNA license and 8 years experience. Available to work daytime, nighttime and weekends, fulltime or part-time. Have own transportation. Call Aleka (240-715-8189).

HOME HEALTH CARE/Caregiver: Senior citizens, CNA. Work 10 years in LW. Grad, BSN (Filipina nurse). Roman Catholic. Culinary grad in Europe. Speak different languages. Schooling for nutrition. Work long/short term. Call Connie (240-449-6362).

COMPASSIONATE, DEPENDABLE, reliable CNA/GNA. 22 years of hands-on, skilled nursing care. Personal care, companionship (travel), cooking, light housekeeping, driving (own transportation). Good references. Call (240-426-4579). Available day/night, 24/7.

CNA/CMT – OVER 16 years of experience. Very dependable. Excellent references in LW. Have car. Light cooking, doctor's appts., errands. Bonded, insured. Hospice patients are welcome. Call Ana (240-491-8978, 301-442-6094).

CNA SEEKING elderly care work. Own car. Loving, caring, 25 years experience. Good reference. Would like to work the night shift. Some hours at daytime as well. Call (301-357-3500).

CNA, GNA, MEDICINE AIDE. Elderly care. Over 10 years experience. Certified CPR, first aid. Reliable, responsible, loving, caring, respectful. Great references. Good driving record; can drive you to shopping. Daily activities, light

cleaning and laundry. Available day and night. (240-640-0709)

**CNA CAREGIVER.** Caring hands, loving and companionship. 25 years experience. Available live-in Monday-Friday, or long days or nights. Have excellent reference. Please call Tegest (301-237-5156).

**20 YEARS EXPERIENCE** – developmentally disabled/adult home health care. CMT, nursing assistant, CPR/first aid certified, BPS. Clean driving record. References available upon request. Alma (240-355-5707).

**MY PARENTS' CAREGIVERS** are available for work. Two loving, caring ladies. Very reliable, honest and hardworking. Doctor's appointments, personal hygiene, grocery shopping, meals, medication, etc., they do it all. You don't have to worry any more. If you need help, call (301-448-2939).

**MALE NURSING ASSISTANT,** CMT, with CPR, first aid training. Trustworthy, loving and understanding. Worked with Alzheimer's, Parkinson's, dementia and diabetic seniors. 15+ years experience. Can cook/bake, American/Indian tasty meals. Have good command of English. Own car with clean driving record. Prefer live-in job and work any shift. Referrals available. Call Nirmal (240-722-2728), email (nirmallyall21@gmail.com).

#### ASSISTED LIVING

2 RN's ASSISTED LIVING LLC – Care beyond call of duty. Just opened our new Assisted Living. Operated by experienced, registered nurses. Accepting a few new residents. Licensed level care 1, 2, 3. Tel. (301-338-4015) or (240-221-3318). Email: (patyusingco@yahoo.com).

#### GENERAL SERVICES

**ALTERATIONS** - 30 years experience in Leisure World! Men's & woman's garments picked up and dropped off at your convenience. Very competitive prices. Call Mimi (301-990-6468).

**ALTERATIONS OF HOUSEHOLD** items or accessories; pick up and drop off at your convenience at a reasonable rate within Leisure World. Call your seamstress daytime at (240-383-4135). Cash only accepted.

**KITCHEN AND BATHROOM** Remodeling – Cabinet and countertop replacement, and bathtub to accessible shower conversions. Please call Joe at JML Remodeling. (301-598-8400). Serving Leisure World since 1988. MHIC# 36674. Thank you.

**"STAIR LIFTS:** Never walk up steps again! Buy new or certified pre-owned stair lifts at reduced prices. Installation, lifetime warranty and free service contract included. Call (301-448-5254).

**CONTINENTAL MOVERS.** Local moving services. Free boxes. Local – long distance – hauling – pick-ups and deliveries. \$80 x two men, one hour driving time. (202-438-1489) (301-340-0602) (Cmora53607@msn.com) (www.continentalmovers.net).

**TIRED OF POLISHING** your silver? Turn it into cash, which does not tarnish. I will come to your home and give you a free evaluation of what I can pay. I buy all gold and silver jewelry, including broken pieces, all sterling silver, gold and silver coins, gold watches, etc. I am licensed with both Maryland and Montgomery County (lic. #2327). If you decide to sell, I can buy your items at that time, but there is no obligation. Call Bob, Gold 4 Good, 8241 Georgia Ave., Ste. 100, Silver Spring, MD 20910 (240-938-9694).

**DAHLSTROM SENIOR SUPPORT SERVICES.** Assistance with Senior Care and the Care of Senior's Pets. Safe/Reliable door-to-door transportation as needed. General assistance to help maintain independence. Assistance with Pet Care. Dog walking and sitting during short hospital stays, vacations, or as needed. Transportation for grooming/vet appointments. I am a 55-yr. old semi-retired Doctor, Leisure World Resident and dog, cat, bird lover. Bonded, insured, reasonable rates and outstanding Leisure World references. Call Carl (410-499-9362).

#### CLEANING SERVICES

**R&G CLEANING SERVICES** – Small, family-owned business catering to you and your household needs. Friendly, reliable and trustworthy with many years of experience. Reasonable rates and flexible hours. Licensed and insured. Help with household organization. Free estimate with appointment. Call (301-442-5032).

**ALICIA'S CLEANING SERVICES** – Good references. Good rate. Once a week or every two weeks. (240-286-3807)

**HOUSECLEANING** – Sara (240-477-2104) will thoroughly clean your home for a fair price; all supplies included. I am one of Sara's satisfied customers. Call Jackie for references (301-598-3711).

**HOUSE CLEANING** – 22 years experience. Worked in LW for 10 years. Reliable, honest, great references. I live in Aspen Hill. Call Alice (301-946-5996) or (301-520-0074).

**HOUSE CLEANING BY JOY:** Weekly, bi-weekly, monthly, one time move in/move out. Reliable. Reasonable rates. Quality work serving area over 10 years. (240-393-9863)

18111

- ✓ Cutting-edge Microscope-centered Dentistry
- ✓ Dentures
- ✓ Gum Treatment
- ✓ Root Canals
- ✓ Sedation Dentistry
- ✓ Bonding
- ✓ Extractions
- ✓ Bleaching
- ✓ Veneers

We Cater to Cowards • Same-day Emergencies • Evening Hours  
Will File Forms for All PPO Insurance Carriers

*Look and feel your best!*



**COMPREHENSIVE FAMILY  
& COSMETIC DENTISTRY**

**\$50 off your first visit**

Not valid with third party plans, new patients only.

Located at MedStar Montgomery Medical Center  
18111 Prince Philip Dr.  
Suite T-17  
Olney, MD 20832

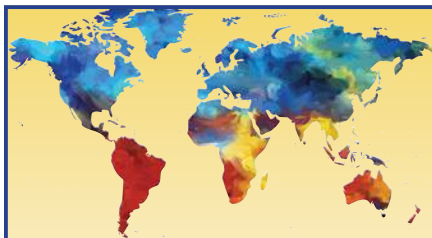
**T: 301-774-7887 • www.OlneyDental.com**

## COMPUTER HELP

COMPUTER SERVICES – Problems with your PC or Network? Computer Systems Engineer will come to you with help. Home, Business. Call David G. (301-642-4526).

A+ COMPUTER SERVICES. Free in-house diagnostic of your computer, printer, or basic set-ups. A+ certified, virus removal, back up, and retrieve important data, photos, and music. Have served over 400 clients in Leisure World. Also will teach lessons on Microsoft Office and basic computer skills at your home. Alex Nowrouzi, (301-312-2277). I reside in Leisure World.

## COMPUTER LESSONS /



### Life's A Trip, Inc. Cruise and Travel

With over 35 years of travel expertise, we can plan the perfect adventure for you!

CALL OR STOP BY TODAY!  
301-421-4400 • Info@lifes-a-trip.com  
1536 Spencerville Ct. #101  
Burtonsville, MD 20866

SERVICES - Need help with your computer? Training, new computer setup, troubleshooting, installation. Lessons at your residence at your convenience. Learn basic computer, email, surfing the web, digital photos, tablets, smartphones, smart TVs, and more. Patient trainer will sit by your side and teach you in plain English - no technical talk! Shopping assistance for all electronic & computer items. Senior specialist since 1996. Senior discount. Call David at (301-762-2570). ComputerTutor

## PERSONAL SERVICES

PRESERVE YOUR FAMILY MEMORIES! Don't let your precious

### Chairworks Plus Furniture Service

- Antique Restoration
- Furniture Repair
- Chair Gluing

Serving the  
Leisure World Community  
for over 30 years



Rick Sussman  
301-502-0018  
410-795-9147

photos be forgotten or fade over time. I'll transfer your photos, slides, and mementos to a CD so they can be easily shared with friends and family. Once they're scanned, I can label the photos to identify the people in them, or bring your photos to life in a memorable DVD slideshow. Call Kim at Virtual Computer Services (301-438-3140).

NOTARY, residing in Leisure World. I offer my service free of charge to Leisure World residents. Can come to your home if needed. (301-379-9694).

PAT'S SENIOR SERVICES – (Leisure World resident) companion/aide, driver, errand runner, housekeeper and offering nutritious juicing and meals. Could lead to fulltime in the future. Call Pat (301-598-1496) or (240-475-5288).

THE GENTLE YOGI, Cheryl Kravitz, RYT200. Contact me about classes at local studios or private lessons. Yoga for Stiff Bodies, Yoga for Caregivers or people with dementia. (301-580-8905) or (crkyoga@gmail.com).

## PET CARE

DOG WALKING, cat sitting, birds. Daily drop-ins or vacations, overnights by mature animal lover with 10 years experience. Medication or insulin as needed. Call Eileen (301-442-3989).

K-9 CARE! Rachel Kravitz (daughter

of Cantor Michael Kravitz) will walk your dog. References provided. Call (301-456-6235) or e-mail (crk725@aol.com).

## HELP WANTED

INTAKE/ASSESSMENT COORDINATOR: Silver Spring-based senior home care agency looking for part-time Intake/Assessment Coordinator. Meet with seniors and their families to describe our services, conduct non-medical assessments, and determine how we can best help them. Phenomenal cohesive office team. Experience preferred: Aging background, excellent written and interpersonal skills; must be computer literate. Must have own car. Work 2 days per week/8:30 a.m.-5 p.m. HomeInstead.com/197. Please send resume and salary requirements to patty.mascari@homeinstead.com. No phone calls please.

## VOLUNTEER OPPORTUNITIES

MUSICIANS WANTED! The Olney Concert Band offers an opportunity to play a variety of concert band music in a collegial environment. The band performs at local venues and at Maryland Community Band Day. So, dust off your brass or woodwind instrument, unpack your drumsticks and tambourine, and join in the fun. Rehearsals are on most Wednesday evenings at Blake High School, 7:30-9:30 p.m. No auditions required, but



## The Smart Choice for Home Care.



You are a whole person and we believe that we have the opportunity to make your day a little easier and more meaningful. As one of Maryland's original home care agencies, we have earned the trust of thousands of local families. Call today to arrange care for just a few hours or around the clock.

- Expert matchmaking • Help with Personal Care • Companionship
- Transportation to Doctors' visits & appointments • Medication reminders
- Meal prep, housekeeping & laundry • Care supervised by Registered Nurses

Flexible hours – Consistent caregivers – Simple set up – Available 24 hours a day License: MD RSA #399

www.capitalcitynurses.com • 301.652.4344

some band experience preferred. Visit [www.olneyconcertband.org](http://www.olneyconcertband.org) for more information.

**VOLUNTEER AS A HOTLINE CALL COUNSELOR** with the Montgomery County Hotline! The Montgomery County Hotline is a 24-hour, 7 day a week confidential service. Counselors provide supportive and confidential listening; crisis prevention and intervention; and give information, referrals and resources. Training Course starts March 11. Contact ([volunteer@mhamc.org](mailto:volunteer@mhamc.org)) or (301-424-0656, ext. 541) if interested.

**MUSEUM GUIDES** – at the Montgomery County Historical Society. Work two weekday afternoons or one weekend afternoon per month from noon to 4 p.m. Receive on-the-job training on local history and museum interpretation. Also receive special admission to programs and a 20% discount in the Museum Shop. Contact Amada Elliott, Education & Outreach Coordinator, (301-340-6534) or ([aelliott@montgomeryhistory.org](mailto:aelliott@montgomeryhistory.org)).

**NOTICES**

**KEEPING SENIORS SAFE - KSS.** Morton A. Davis, coordinator and resident of Leisure World is available to discuss theft prevention, driving and shopping habits, frauds, home safety inspection and property crimes to any organization. The program is part of the Montgomery County Police Department Volunteer Resource Section. Morton can be reached at (301-318-0681) or ([mortonadavis@comcast.net](mailto:mortonadavis@comcast.net)).

**WANTED**

**WANTED TO RENT** in Greens Bldg. #1 (15101 Interlachen Dr.) 1 or 2 indoor parking spaces and a large private storage unit. Please call (301-525-7268). LW resident.

**FAST CASH FOR USED CARS** - Big dollars paid for your used car! Over 43 years experience serving Leisure World. Leave message 24 hours. I will come to you. Cash or cashier's check at your request. I can also help with your new car purchase, any

**Custom Drapery**  
Valance, Cornice, Sheers,  
Blinds, and Shades

**30% off**

Free in Home Consultation

Authorized Dealer of  
Grabier & Carole Fabrics



**ELA INTERIOR DESIGN**

**Call: 240-676-4300**

make or model! Md. Dealer #U2927. Call Marty Salins (301-325-1973).

**WILL BUY MILITARY, WW2, WW1, Civil War, memorabilia items.** Uniforms, Weapons, Helmets, Photos, Medals, or any other items associated with US, German, Japanese or other military history. Call Dave (240-464-0958) or email ([obal7@aol.com](mailto:obal7@aol.com))

**CASH FOR RUGS:** oriental rugs, any condition. European, Asian, Navajo, etc. [atticllc.com](http://atticllc.com) Gary (301-520-0755)

**HOUSING UNLIMITED, INC** is a non-profit organization that provides housing for people in mental health recovery. We accept furniture and housewares that are in good condition to furnish our homes. We do pick up. The Housing Unlimited office is (301-592-9314). Thank you.

**CASH FOR JEWELRY:** gold, silver, costume, diamonds, coins (including foreign), watches, stamp collections. [atticllc.com](http://atticllc.com) Gary (301-520-0755).

**TURN YOUR STERLING SILVER** and old gold jewelry into cash and do something good for yourself. Gold 4 Good (8241 Georgia Ave., Ste. 100, Silver Spring, MD 20910) buys gold and silver jewelry, including

broken pieces, all sterling silver, gold watches and gold and silver coins. I will come to your house and give you a free evaluation of what I can pay. If you decide to sell, I can buy your items at that time, but there is no obligation. Licensed with both Maryland and Montgomery County (lic. #2327). Call Bob (240-938-9694).

**BUYING ANTIQUES, jewelry;** cash paid. Also gold, silver, watches, coins, pens, Asian antiques, original art,

firearms, old toys, golf. Please call Tom, Silver Spring resident, at (240-476-3441).

**WE BUY VINTAGE:** Turn your old into gold! Something in the basement gathering dust? Give us a call; you might be surprised! Phone quotes and home visits when possible. Specializing in vintage Hi-Fi equipment (amplifiers, turntables, speakers, etc.). Over 50 years paying top dollar in your community. (301-881-1327) Please leave a message.



**Thinking About Renovating?**  
We can do everything for you!

- Painting
- Carpeting
- Flooring
- Carpentry

**Moving In or Out?**  
We can make your home shine!

- Kitchen & baths
- Refinishing
- Carpet cleaning
- Repairs

**240-441-1999**  
**301-460-4247**

**Manuela Thoms - Owner**  
Email: [sunshinepjs@gmail.com](mailto:sunshinepjs@gmail.com)

**Free Estimates**  
No Job too Big or too Small

**Reliable, Trusted, Professional Services**

**Licensed and Insured**  
MHIC# 134458

**Services for Seniors**

Activities of Daily Living	Support Services
• Bathing	• Companionship
• Dressing	• Meal Preparation
• Lifting	• Medication Reminder
• Transferring	• Physical Therapy
• Personal Care & Hygiene	• Light Housekeeping
	• Transportation to Appointments

**What makes ElderCaring different?**

- 2 hour minimum for services – most companies require 4 hours as a minimum
- All caregivers are professionally trained nursing assistants
- The owner of ElderCaring personally meets with you to discuss your needs
- All caregivers are fluent in English
- Personal choice in selection of every caregiver
- Licensed, Bonded, Insured
- 24 Hours Service - 7 Days a Week

Would you like to receive a brochure in the mail, or set up an appointment?

**ElderCaring**  
Call 301-949-0060  
[www.eldercaring2.com](http://www.eldercaring2.com)  
"The quality of care you would want for your parents."



**Kathleen and Eileen Kane**

Honored To Serve You For 35+ Years With Cathy Gilmour Real Estate And Proudly Continuing That Same High Level Of Service With Long & Foster



Kathleen Kane, Assoc. Broker



Eileen Kane, Assoc. Broker

**A** – Gorgeous view from enclosed balcony of this spacious 1 bedroom, 1 bath apartment on the 7th floor in **Fairways South**. Table space kitchen, fresh paint and new wall to wall carpet, just waiting for your updates to make it perfectly yours. **\$120,000**

**F** – In **Villa Cortese**, Building 2 on the 4th floor, 2 bedrooms, 2 full baths, den, living room, formal dining room, table-space kitchen, enclosed balcony. Large garage space! California closets! Engineered wood floors! **\$345,000**

**B** – In **Turnberry Courts**, Building 3 on the 5th floor, two bedrooms, two baths, living room, dining room, table-space kitchen, enclosed balcony, light and bright. **\$188,900**

**Elizabeth** – Largest apartment in **Montgomery Mutual** (over 1300 sq. ft.). Two bedrooms, 1-1/2 baths, grand living room, dining room, windowed kitchen looks out to atrium. Freshly painted and ready for you to move in. **\$125,000**

**SELLERS** – This is YOUR market! Inventory of homes is low and interest rates remain low. This is the time for you to make the move you've been planning. Contact Kathleen or Eileen to assist you.

**BUYERS** – With low inventory & still very low interest rates, now is the time to put your house on the market and move to Leisure World.

**Dedication makes the difference!** **LONG & FOSTER REAL ESTATE, INC.**  
Residential & Commercial Real Estate • Mortgage • Title • Insurance • Property Management

Direct: 240-460-8647 | Leisure World Plaza Office: 301-598-7500 | [Kathe.E.Kane@Gmail.com](mailto:Kathe.E.Kane@Gmail.com)



# EYRE Leisure World Travel

Travel & Tour Department • (301) 598-1599 • Monday, Wednesday & Friday 8:30 AM-2:00 PM  
Reservations can be made Monday through Friday, 8:30 AM-5 PM by calling 301-854-6600 #4  
For more detailed itineraries, please see the Eyre Representative at the Eyre Leisure World Travel Office.

## DAY TRIPS

### Radio City Christmas Spectacular, NYC

Fri., 12/1, 7:30 am-11:15 pm .....\$179.00 per person  
Every year, the Rockettes put on a show that's more dynamic and more magical than the last. Orchestra seating.

### Christmas Extravaganza, Riverside Center for the Performing Arts, Fredericksburg, VA

Wed., 12/6, 9:45 am-6:30 pm.....\$113.00 per person  
Rekindle your Christmas spirit at Riverside Center. Lunch included.

### Tea & Tour National Cathedral, DC

Wed., 12/13, 12:00 pm-6:00 pm ..... \$79.00 per person  
Guided tour of the Cathedral and afternoon tea included. While touring the Cathedral see if you can count of the angels (288) and the gargoyles (112)!

### Museum Loop, Washington DC

Tues., 1/9 8:40 am-3:00 pm .....\$35.00 per person  
Choice of: Natural History Museum, Feer Gallery of Arts, National Archives or National Gallery of Art \*special exhibit. Transportation only.

### Brunch & Basilica Washington, DC

Sun., 2/4, 10:15 am-4:15 pm .....\$95.00 per person  
Enjoy a leisurely brunch at the Mad Hatter and a guided tour of the Basilica.

### Riverdance: 20th Anniversary Tour

Friday, 2/9 .....\$156.00 per person  
The international Irish dance phenomenon is back by popular demand in Riverdance at the American Music Theatre in Lancaster, PA. Lunch is included at Shady Maple Smorgasbord.

### \*NEW\* The Bible Museum, Washington, DC

Wed., 2/28, 9:05 am-3:00 pm.....\$65.00 per person  
The Museum of the Bible allows you to explore the history, narrative and impact of the Bible on a guided tour. Lunch on-own in the museum

### Philadelphia Flower Show

Thur., 3/8 or Fri., 3/9  
7:45 am-7:45 pm .....\$86.00 per person  
This years theme is Waterworks! Lunch on own.

### 9/11 Memorial & Museum New York

Sat., 3/17, 7:00 am-11:45 pm ..... 120.00 per person  
One World Observatory\* ..... 139.00 per person  
The Memorial Museum is an educational and historical institution honoring the victims and examining the global significance of 9/11; the museum displays artifacts and presents stories of loss and recovery. (Security screening on-site) Includes a \$10 Gift Card to Cracker Barrel. \*Optional add-on to your day - Travel up to One World Observatory at One World Trade Center for an additional \$19.00 per person. Positioned on top of the tallest building in the Western Hemisphere, on level 100-102, One World Observatory offers breathtaking views of NYC and its surrounding waters. (A minimum of 20 guests required to qualify for group rate).

### Orchid Exhibit at Hillwood

Tues., 3/20, 10:15 am-4:45 pm ..... \$90.00 per person  
Marjorie Merriweather Post had the greenhouse constructed to house her extensive collection of orchids. Enjoy a our of the greenhouse and learn about its history. Lunch at the café.

### \*NEW\* National Museum of Jewish History, PA "Leonard Bernstein: The Power of Music"

Wed., 3/21, 8:15 am-6:00 pm.....\$105.00 per person  
Admission covers two exhibits: the core exhibit (docent lead) and Leonard Bernstein: The Power of Music, celebrating the centennial birthday of one of the 20th century's most influential cultural figures. Boxed Lunch provided.

### Hagerstown Outlets

Thurs., 3/22 9:00 am-4:45 pm.....\$35.00 per person  
Shop till you drop! Transportation only.

### "Jesus" at Sight & Sound Theatre in PA

Sat., 3/24, 9:45 am-6:15 pm .....\$159.00 per adult  
.....\$99.00 per child  
Jesus is the musical stage adventure about the most famous person to ever walk the earth, and the everyday people whose lives he changed forever. Lunch prior to the show at Hershey Farm Restaurant.

### "The Hunchback of Norte Dame" Riverside Center for the Performing Arts, Fredericksburg, VA

Wed.,3/28, 9:45 am-6:45 pm.....\$117.00 per person  
As the bells of Notre Dame resound through the famed cathedral in 15th-century Paris, Quasimodo, who longs to be "Out There," observes all of Paris reveling in the Feast of Fools. Held captive by his devious caretaker, the archdeacon Dom Claude Frollo, he escapes for the day and joins the boisterous crowd, only to be treated cruelly by all but the beautiful gypsy, Esmeralda. Quasimodo isn't the only one captivated by her free spirit, though – the handsome Captain Phoebus and Frollo are equally enthralled. As the three vie for her attention, Frollo embarks on a mission to destroy the gypsies – and it's up to Quasimodo to save them all. Lunch included.

### Spotlight on...

#### Early booking Savings for Cape Cod July 22-26

If you book our Cape Cod trip by February 1 you save \$50.00 per person.

## MULTI-DAY TRIPS

### Myrtle Beach & Charleston, SC

March 18-22, 2018

### Best of Israel & Jordan

March 21, Oct. 3 or Nov. 7  
-12 days (fly/drive)

### St. Augustine, Amelia Island & Jacksonville, FL

April 8-14, 2018

### Sedona's Red Rocks & the Grand Canyon

April 15-20, 2018

### A Trolley, A Train & Patsy Cline's Winchester

May 23-25, 2018

### Nova Scotia & Canada's Maritimes

Aug. 10-18, 2018

### A Taste of Tuscany

Sept. 2-9, 2018

### Mystical Peru

Sept. 11-17, 2018

## CRUISES

### Caribbean Princess Panama Canal Cruise out of Ft. Lauderdale

March 8-18, 2018

### Carnival Pride Bermuda Cruise

April 8-15, 2018

### Princess Cruise Alaska on the Golden Princess (land/cruise)

Aug. 14-25, 2018

### Princess Cruise Alaska on the Golden Princess (cruise only)

Aug. 18-25, 2018

We can book any cruise line anywhere you want to cruise.

(All Trips depart from Clubhouse II)

Some trips require a certain amount of walking. The shoe symbol  provides an indication of how much walking may be involved.

Key:  Easy Walking   More Walking    A Lot of Walking

Eyre at Leisure World Travel Office, located in Clubhouse I, is a department of Eyre Bus, Tour & Travel. We offer a full service travel agency that specializes in airline reservations, cruises, group tours, vacation packages, hotel accommodations and auto rental. We have been providing "Excellence in Travel for 60 Years".

**INCLEMENT WEATHER POLICY:** Please call 301-598-1599 after 7 am on the day of a trip to find out if we have cancelled, postponed or are going. If a trip is cancelled, you will also receive a phone call from us once the office is open.


# EVERY DAY IS A HOLIDAY

AT ASPENWOOD SENIOR LIVING

ASPENWOOD  
SENIOR LIVING COMMUNITY

14400 Homecrest Road  
Silver Spring, MD 20906

**301-598-6424**



At Five Star, we treat every day like a holiday. With our exceptional Five Star Dining Experience featuring Signature Recipes, Lifestyle360 activities for well-rounded days, and Rehabilitation & Wellness coaches to get you back in the game, we give residents a reason to celebrate every day.

CALL TODAY TO CELEBRATE THE EXCEPTIONAL LIFE WITH US.



[www.AspenwoodSeniorLiving.com](http://www.AspenwoodSeniorLiving.com)  
INDEPENDENT LIVING • AREA'S ONLY INDEPENDENCE PLUS • ASSISTED LIVING

©2017 Five Star Senior Living



REHABILITATION

YOUR COMMUNITY'S  
NEW, STATE-OF-THE-ART  
**REHAB CENTER IS NOW OPEN**

Brooke Grove Rehabilitation and Nursing Center's innovative, new place to heal and revitalize is simply different from any other option in the region. Imagine the best therapies and equipment—in a beautiful environment that rejuvenates and restores. Physical therapy spaces bathed in sunlight. Fireside gathering places and restaurant-style dining with sunset views over the lake. The quiet comfort of a garden walk or a relaxing massage.

A NEW, STATE-OF-THE-ART REHAB CENTER

Fully dedicated to short-term rehab • Two-story physical therapy gym • Innovative therapies for faster healing • Expansive guest rooms with luxury bathrooms • Covered porches, courtyard and walking trails • Salon • Spa with massage room and soaking tub

**BECAUSE WHAT SURROUNDS YOU  
REALLY MATTERS.**



**BROOKE GROVE**  
RETIREMENT VILLAGE

18100 Slade School Road  
Sandy Spring, MD 20860

301-260-2320 or  
301-924-2811

[www.bgf.org](http://www.bgf.org)

INDEPENDENT LIVING   ASSISTED LIVING   REHABILITATION  
LONG-TERM CARE   MEMORY SUPPORT