

# Leisure World News

## OF MARYLAND

December 1, 2017 • Published Twice a Month • residents.lwmc.com

## Setting Up the Station, Early in the Morning



Five members of the Model Railroad Club put finishing touches on a display in the Administration Building lobby. Photo by Maureen Freeman, Leisure World News

by Leisure World News

Amid the palm fronds and deep green leaves of large indoor plants, a little bit of the winter holiday season staked a presence in the center of the Administration Building the morning of Nov. 28.

Continuing a five-year tradition, several members of the Model Railroad Club set up a G-gauge track and train to run continually in the center of the building's lobby until just after the new year.

Within the oval tracks, around which an engine pulls a couple of crane cars and a passenger car, a small village of model buildings and people engage in life from a bygone time. There's a bakery nestled between snow-tipped ever-

greens, a horse-drawn sleigh out for a jaunt, a footbridge, children playing with sleds, and a colorful train depot and Jingle's mercantile decorated for the holidays with wreaths and bows on their facades.

A timer is set to turn the train engine on and off each day when the Administration Building is opens and after office close.

With their setup complete about 90 minutes after they arrived, the club members slipped away like elves after leaving gifts. But one member, Henry Jordan, plans to return every couple of days to lubricate the engine's drive mechanism and the cars' wheels.

For more on the Model Railroad Club and its upcoming open house on Dec. 9, see page 16.

## Board Directs Strategic Planning Engagement

by Maureen Freeman,  
Leisure World News

David Frager on Nov. 28 presided over the final 2017 regular meeting of the Leisure World Community Corporation (LWCC) board of directors, which approved a slate of resolutions. It was Frager's final meeting as the board's chairman after three years in the position. He will continue as a member of the board, representing Creekside.

The board directed the special Strategic Planning Committee to engage with residents in the coming months to explain and receive feedback on the committee's goals and processes. The committee plans to speak to advisory committees and hold information sessions for residents between Dec. 1 and March 15.

The committee's chairman, Richard Fisher, presented a report to the board and proposed spending about \$125,000 for a contractor to conduct and advise on "expert research on internal and external attitudes and desires."

"Two big questions," Frager said, are "how big a project this group wants to undertake, and where would the money come from."

The committee will report on the results of the information sessions and recommend a course of action at the board's regular March 2018 meeting.

### Advisory Committees

The board confirmed members of the 2018 Advisory Committees, to serve from Jan. 1, 2018 through Dec. 31, 2018. Members of the Government Affairs Advisory Committee serve from July 1 through June 30, in order to conform with the legislative session.

### Reorganization

An updated Leisure World of Maryland Corporation organizational chart was approved, allowing for a director of Education, Recreation and Communications, who will report to the executive coordinator for support services and oversee two assistant directors.

### Pool Contract

LWCC Board of Directors approved an extension to the Pool Management contract.

A contract with Community Pool Service, LLC was extended for three years through the end of 2020. This contract provides pool management services to both the indoor and outdoor pool facilities.

### Site Plan Funding

To further the site plan permit approval process through the Maryland-National Capital Park and Planning Commission for the Administration Building and Clubhouse I Site Improvements project, the board authorized \$48,000 from the Facilities Enhancement Plan Fund (Resales Fund).

► to page 2

INSIDE	Governance & Information ....	4	Sports, Games & Scoreboards .....	34
	Thoughts & Opinions .....	6	Classes & Seminars .....	38
	Events & Entertainment.....	8	Calendar of Events .....	39
	Movie Schedule .....	10	Governance Meeting Schedules .....	39
	Health & Fitness .....	12	Classifieds.....	42
	Clubs, Groups & Organizations .....	16		
	Club Trips Listing.....	30		



## What Do You Think?

To find out what other members of your community think about what's happening in Leisure World, see page 6.

# Preparing for Winter Weather

by David Darr

It's time for residents to check their emergency supply kits; local meteorologist Doug Kammerer's weather predictions for the Washington, D.C., area indicate a cold December and January, with 14-20 inches of snow accumulation for the season.

## Check Your Supply Kits

Regardless of the forecast,

residents need to be ready for whatever weather comes this way. Residents should take time to review their emergency supply kits as appropriate. Detailed lists with suggestions for home, car, office and pet supply kits are available at ([www.ready.gov](http://www.ready.gov)).

In all cases, keep a contact list up to date and cellular devices charged with an appropriate charger at home, in the car and at the office.

The following suggestions

cover emergency supply kit basics:

- Home: water (one gallon per day, per person), canned or packaged food; clothing; medications; flashlight, portable radio and extra batteries; plastic eating utensils; manual can opener; personal hygiene items; first aid kit; and any other essentials. All items should last for three-five days.
- Car: water, non-perishable food, medications, flashlight and batteries, flares, jumper cables, tire gauge, fuel tank at least half full, blanket, snow shovel, first aid kit, and any other essentials. All items should last for one-three days. Service on the car should be up to date, including tires, brakes and anti-freeze coolant.
- Office: water (one gallon per day, per person), nonperishable food, flashlight, portable radio and extra batteries, clothing, medications and any other essentials. All items should last for one-three days.
- Pet: water; food in water-proof, airtight containers; medications and medical records; first aid kit for pets; collar with ID tag, harness or leash; pet carrier; sanitation supplies; a photo of you and your pet together; toys, treats and bedding; and any other essentials. All items should last for three days.

Supply kits are just one aspect – but an essential one – of being prepared for emergencies. For more information on emergency preparedness, visit ([www.redcross.org](http://www.redcross.org)) and ([www.fema.gov](http://www.fema.gov)).



## FAMILY FOOT & ANKLE ASSOCIATES OF MARYLAND

**Dr. Michael Frank**  
**Dr. Marc Goldberg**  
**Dr. Adam Lowy**

**3 Convenient Locations  
Minutes from Leisure World**

### OLNEY

Oland Professional Center  
3408 Olandwood Ct. Suite 204  
Olney, MD 20832

(301) 924-5044

### KENSINGTON

Family Foot & Ankle Associates of Maryland  
3930 Knowles Ave Suite 202  
Kensington, MD 20895

(301) 942-8110

### SILVER SPRING

Colewood Centre  
10801 Lockwood Dr. Suite 260  
Silver Spring, MD 20901

(301)439-0300

[www.MarylandFeet.com](http://www.MarylandFeet.com)

## Board

← from page 1

### Restaurant

The board approved the installation of new flooring in the Terrace and Stein Room restaurants and the purchase of additional tables and stools in the Clubhouse Grille. Installation will take place during the first week of January, when the restau-

rants are scheduled to close for annual cleaning.

Board members applauded Frager just before the meeting concluded. "Okay, the happiest words I know: We're adjourned," he said, with a smile and a tap of the gavel on the table.

The board's next regular meeting is Tuesday, Jan. 30, 2018 at 9:30 a.m.

# Leisure World News OF MARYLAND

An official publication of the Leisure World Community Corporation, Leisure World News is published twice monthly by Leisure World Staff in collaboration with the Leisure World News Advisory Committee

Leisure World News is published for the benefit of Leisure World residents. Its mission is to provide news and information about community governance and other relevant issues, events, and activities, and to provide residents a forum for their opinions and an opportunity to contribute articles of general interest. All matters concerning the Leisure World News will be decided with this mission in mind.

#### Leisure World Staff

Maureen Freeman,

Director of Communications

Stacy Smith, Senior Editor

Kathleen Brooks, Publication Associate

Cassandra Chisholm, Graphic Designer

Editorial: [lwnews@lwmc.com](mailto:lwnews@lwmc.com)

Advertising: [lwnewsads@lwmc.com](mailto:lwnewsads@lwmc.com)

301-598-1310

#### Communications Advisory Committee

Arthur N. Popper, Chair

Bernie Ascher, Vice Chair

[aclwn@lwmc.com](mailto:aclwn@lwmc.com)

#### Resident Contributors

Barbara Braswell, Rincy Pollack

and Alan Goldstein

Leisure World News of Maryland reserves the right to reject or discontinue any advertisement believed to be not in the best interest of Leisure World. We will not knowingly permit a dishonest advertisement to appear nor do we guarantee the reliability of advertisers.

# ASPEN HILL EXXON 301-871-6777



## Auto Care

[www.aspenhillexxon.com](http://www.aspenhillexxon.com)

**14011 Georgia Ave.**

Owned and Operated by BENNY Since 1980 "or ask for my son DAN."  
Friendly, personal and professional service!

**Free transportation home and back when you leave your car for service!**

• Complete Automotive Maintenance Service & Repair • Most Makes & Models  
• Two Years/24 Month Warranty • Factory Scheduled Maintenance

### Auto Service Discounts

**Oil Change Service Special - \$29.95**

**5 Qts of synthetic blend 5W/30 oil**

**Oil Filter & Lube ♦ Multi-Point Inspection**

**Most cars, plus tax & disposal fee**

**Full Synthetic Extra**

**Present this Coupon with Incoming Order. Expires December 31, 2017**

**Maryland State Inspection Station**

# Leisure World of Maryland Resales

July through September 2017

MONTH	RESALES	RESALES FUND FEES COLLECTED
July	33	\$138,028
August	37	\$133,520
September	32	\$117,548
<b>TOTAL</b>	<b>102</b>	<b>\$389,096</b>

When a home is resold in Leisure World, an assessment equal to two percent of the home's selling price is contributed to the Resales Fund. Currently, those funds are used exclusively for Facilities Enhancement Plan (FEP) projects, which are selected by the Leisure World Community Corporation board of directors. Recent FEP projects include the new fitness center in Clubhouse II, and renovations to the restaurants and ballroom in Clubhouse I.

— Leisure World News

## Give to Toys for Tots

Weichert, Realtors is collecting for the annual Toys for Tots Marine Corps Reserve program. A collection box is located in the Administration Building lobby near the Weichert desk area.

Every year, residents generously give to this worthy cause. The organization accepts new and unused games, dolls, books, stuffed animals, balls, cars and trucks, coloring books and other small toys for children in need.

All donations must be received by 5 p.m. on Thursday, Dec. 14.

— Marilyn Chimielewski



Items collected during the 2015 Toys for Tots drive. Photo by Marilyn Chimielewski

## Your Family is Your Priority — and Mine.

**LYNN CAUDLE BOYNTON**

*Experience, Expertise, Understanding*

I have practiced law since 1982 with a focus on **estate and trust planning, probate of estates and real estate law.** My goals are to honor your wishes, to carefully cover all the possible details and to assure your and your family's welfare. By anticipating all options, you can protect your family legacy and avoid any unnecessary disputes or misunderstandings.



Consultations available in your home or in my Gaithersburg office.

Immediate Past President, elected by 3,000-member Bar Assn. for Montgomery County, MD  
Rated AV by Martindale Hubbell ■ Wall Street Top Rated Lawyer ■ BAMC Law Leader



Specialties of other practice partners include:  
Civil & criminal litigation ■ Family law ■ Personal injury  
Land use, preservation & development  
www.clifforddebelius.com ■ 301-840-2232

240-499-7470 ■ lboynton@debelius.com

## [Snapshot]



They're my babies. It's so hard to give them away."

— Ruth Slone

Ruth Slone, left, sells her beaded creations at the Holiday Arts and Crafts Bazaar in the Clubhouse I Crystal Ballroom on Nov. 18. She has been designing, making and selling jewelry for about 15 years, the past three years at the annual Leisure World bazaar. She sells to a few local stores, "but their prices are triple," she says.

## Fitness Center Offers Free Orientation Tours

Kaye Haynes, the Fitness Center's personal trainer, offers free orientation tours of the Fitness Center every Tuesday, Dec. 5 through Jan. 30, at 3 p.m. Registration is not required. For more information, call Haynes at (804-627-1582).

— Leisure World News

## HOME REPAIRS?

They can be a headache, but they don't have to be.  
Put your mind at ease.

**2018 PPD ANNUAL SERVICE CONTRACT**  
PLUMBING • ELECTRICAL • HVAC • APPLIANCES • MINOR REPAIRS

**Don't be surprised by costly repair bills.**

PPD offers coverage for 2018 in one convenient payment.

The cost of your contract is often covered with the first repair. Minor repairs won't be neglected and turn into a major issue.

Your fellow residents have signed up. **What are you waiting for?**

— Janet F. —

— Dorothy P. —

"Miguel was outstanding, so kind and willing to do anything you asked him to do. It was a pleasure to have him work in my home. Thank you."

"Very understanding and helpful... explained everything."



Repair services provided 8 a.m.-midnight, seven days a week.  
For more information, stop by PPD or call 301-598-1500.  
For a copy of the contract online, visit residents.lwmc.com



# GOVERNANCE & Information

## Dec. 4: AARP Safe Driving Course

The E&R Department is sponsoring an AARP Safe Driving Course on Monday, Dec. 4, in Clubhouse I from 9:45 a.m.-3 p.m., with a one-hour break for lunch.

You must pre-register for the course, which is for residents only. Please bring your Leisure World ID. A check payable to AARP, \$15 for AARP members and \$20 for non-members, is required at the time of registration. (Please note: AARP members must show a current membership card to receive the AARP discount.) Register in the E&R office in Clubhouse I. The number of participants is limited to 25.

Participants should bring their driver's license and a pen or pencil to the course. If you have any questions, contact the E&R Office in Clubhouse I at (301-598-1300).

**Dial 301-598-1313  
for recorded Daily Events**

### 2017 Broadcast Schedule - Channel 974

Executive Committee meetings are broadcast on Wednesday, Thursday and Friday the week after the meeting. Board of Directors meetings are broadcast on Monday, Wednesday and Friday the week after the meeting. All broadcasts are at 4 p.m. and 7 p.m.

<b>Executive Committee Meeting</b> The Dec. 11 special meeting airs on Dec. 21, 22 and 23.	<b>Board of Directors Meeting</b> No meeting in December.
--	--

## Group Email Addresses

Residents wishing to contact Leisure World Management, the LWCC Board of Directors, or the Executive Committee may send an email to the appropriate email address listed below. It will automatically be forwarded to all members of that group who have an email address on record.

Messages to any of the email groups should pertain only to the management and operation of Leisure World trust properties, services, or activities. Please do not send emails to all three addresses, as there will be a duplication of recipients and will not result in a faster response to your question or comment. Messages pertaining to mutuals or anything else which Management, the Board of Directors, or Executive Committee does not control should also not be sent to these groups.

The group email addresses are:

- LWMC Management - management@lwmc.com
- LWCC Board of Directors - board@lwmc.com
- LWCC Executive Committee - execcomm@lwmc.com

## Dec. 7: MVA Mobile Office Returns

Need to do business with Maryland's Motor Vehicle Administration? The MVA on Wheels returns to Leisure World on Thursday, Dec. 7.

The van will be located in the Clubhouse II parking lot, where the hours of operation are 10 a.m.-2 p.m.

Services offered include renewal of non-commercial driver's licenses, Maryland photo identification cards and vehicle registration. You also can obtain a duplicate driver's license, a certified copy of a driving record, disability placards, substitute stickers, return tags and duplicate registrations, as well as apply for a change of address.

If you need to register to vote and/or want to register as an organ donor, you can do that at the mobile office, too.

## Tax Season Is Just Around The Corner

by Bob Bridgeman

AARP Tax-Aide volunteers are training, and will be ready to help residents prepare their taxes every Wednesday beginning Feb. 7 in Clubhouse I.

This year, the taxpayer is required to show his or her social security card to ensure proper identity. Residents who don't have their card can contact the Social Security Administration to obtain a replacement.

Residents can also use their Medicare card if their social security number is on it. Social security numbers are not located on the SSA-1099 forms that Social Security recipients receive.

The E&R office in Clubhouse I schedules tax preparation at Leisure World beginning Tuesday, Jan. 23. Assistance is also available in 29 other Montgomery County locations offer assistance, and the scheduling for most of those sites can be done at the Holiday Park Senior Center in Wheaton.

AARP is looking for more volunteers to help, and knowing how to prepare taxes is not required. For more information or to volunteer, visit (<http://www.montgomerycountymd.gov/volunteercenter/tax-aide/tax-aide-schedulers.html>) or call Kathleen Stobie at (240-777-2610).

## Wanted: Volunteers to Deliver the Leisure World News

Twice a month, the Leisure World News is delivered throughout the community by some of your neighbors and friends. Did you know that

these individuals volunteer to do this?

This corps of volunteers is essential to the community, delivering papers right to your door.

When asked why they do it, responses range from: I like to get the exercise and fresh air, to I meet my neighbors and make new friends, or I want to be involved in my community.

Would you like to be part of this elite corps? You could be. Right now, Montgomery

Mutual needs volunteers to deliver the Leisure World News on three of its courts: Oxford, Barclay and Devon. You do not have to live on

any of these courts, or even in Montgomery Mutual. You just need the desire to provide this service to your neighbors. The commitment in time is small, only an hour or so of your weekend twice a month.

If you think this is the volunteer opportunity for you, contact the Leisure World News at (301-598-1310) or (kbrooks@lwmc.com) for more details.



Photo by Leisure World News

# EYRE Leisure World Travel

Travel & Tour Department • (301) 598-1599 • Monday, Wednesday & Friday 8:30 AM-2:00 PM  
Reservations can be made Monday through Friday, 8:30 AM-5 PM by calling 301-854-6600 #4  
For more detailed itineraries, please see the Eyre Representative at the Eyre Leisure World Travel Office.

## DAY TRIPS

### Christmas Extravaganza, Riverside Center for the Performing Arts, Fredericksburg, VA

Wed., 12/6, 9:45 am-6:30 pm.....\$113.00 per person  
Rekindle your Christmas spirit at Riverside Center. Lunch included.

### Tea & Tour, National Cathedral, DC

Wed., 12/13, 12:00 pm-6:00 pm ..... \$79.00 per person  
Guided tour of the Cathedral and afternoon tea included. While touring the Cathedral see if you can count of the angels (288) and the gargoyles (112)!

### Museum Loop, DC

Tues., 1/9, 8:40 am-3:00 pm .....\$35.00 per person  
Choice of: Natural History Museum, Feer Gallery of Arts, National Archives or National Gallery of Art \*special exhibit. Transportation only.

### \*NEW\* African American Museum, DC

Sat., 1/27, 9:15 am-3:15 pm .....\$45.00 per person  
Explore the 7-story museum filled with history! Transportation only! Café on site for lunch.

### Brunch & Basilica, DC

Sun., 2/4, 10:15 am-4:15 pm .....\$95.00 per person  
Enjoy a leisurely brunch at the Madhatter and a guided tour of the Basilica.

### Riverdance: 20th Anniversary Tour

Friday, 2/9 .....\$156.00 per person  
The international Irish dance phenomenon is back by popular demand in Riverdance at the American Music Theatre in Lancaster, PA. Lunch is included at Shady Maple Smorgasbord.

### Museum of the Bible, DC

Wed., 2/28, 9:05 am-3:00 pm.....\$65.00 per person  
The Museum of the Bible allows you to explore the history, narrative and impact of the Bible on a guided tour. Lunch on own in the museum

### Terra Cotta Warriors, Franklin Institute, PA

Friday, 3/2, 7:15 am-6:00 pm.....\$89.00 per person  
Take a step back in time to ancient China and explore the mystery and wonder of China's Terracotta Warriors. Lunch included at museum.

### Philadelphia Flower Show

Thur., 3/8 or Fri., 3/9  
7:45 am-7:45 pm .....\$86.00 per person  
This years theme is Waterworks! Lunch on own.

### 9/11 Memorial & Museum, New York

Sat., 3/17, 7:00 am-11:45 pm ..... 120.00 per person  
One World Observatory\* ..... 139.00 per person  
The museum displays artifacts associated with the events of 9/11 while presenting stories of loss and recovery. (Security screening on-site) Includes a \$10 Gift Card to Cracker Barrel. \*Optional add-on to your day - Travel up to One World Observatory at One World Trade Center for an additional \$19.00 per person

### Orchid Exhibit at Hillwood

Tues., 3/20, 10:15 am-4:45 pm ..... \$90.00 per person  
Marjorie Merriweather Post had the greenhouse constructed to house her extensive collection of orchids. Enjoy a tour of the greenhouse and learn about its history. Lunch at the café.

### \*NEW\* National Museum of Jewish History, PA "Leonard Bernstein: The Power of Music"

Wed., 3/21, 8:15 am-6:00 pm.....\$105.00 per person  
Admission covers two exhibits: the core exhibit (docent lead) and "Leonard Bernstein: The Power of Music," celebrating the centennial birthday of one of the 20th century's most influential cultural figures. Boxed lunch provided.

### "In the Mood," Weinberg Center, Frederick, MD

Sat., 3/24, 1:30 pm-6:15 pm.....\$89.00 per person  
In the Mood features the timeless melodies and rhythms of the big band era. Tickets only.

### Hagerstown Outlets

Thurs., 3/22 9:00 am-4:45 pm.....\$35.00 per person  
Shop 'til you drop! Transportation only.

### "Jesus," Sight & Sound Theatre in PA

Sat., 3/24, 9:45 am-6:15 pm .....\$159.00 per adult  
.....\$99.00 per child  
"Jesus" is the musical stage adventure about the most famous person to ever walk the earth, and the everyday people whose lives he changed forever. Lunch prior to the show at Hershey Farm Restaurant.

### "The Hunchback of Notre Dame," Riverside Center for the Performing Arts, Fredericksburg, VA

Wed.,3/28, 9:45 am-6:45 pm.....\$117.00 per person  
As the bells of Notre Dame resound through the famed cathedral in 15th-century Paris, Quasimodo, the deformed bell-ringer who longs to be "Out There," observes all of Paris reveling in the Feast of Fools. Lunch included.

### Cherry Blossom Tour, DC

Mon., 4/2, 9:55 am-3:00 pm ..... \$79.00 per person  
Driving tour of DC with stops at WWII Memorial, FDR Memorial & Martin Luther King Jr. Memorial. Lunch at Carmine's included.

## ★ New Days at Leisure World ★

Starting January 2018  
Tuesday, Wednesday, Friday  
8:30 am-2 pm

## MULTI-DAY TRIPS

Myrtle Beach & Charleston, SC  
March 18-22

Best of Israel & Jordan  
March 21, Oct. 3 or Nov. 7  
12 days (fly/drive)

St. Augustine, Amelia Island  
& Jacksonville, FL  
April 8-14

Sedona's Red Rocks  
& the Grand Canyon  
April 15-20

A Trolley, A Train  
& Patsy Cline's Winchester  
May 23-25

Cape Code  
July 22-26

Nova Scotia & Canada's  
Maritimes  
Aug. 10-18

A Taste of Tuscany  
Sept. 2-9

Mystical Peru  
Sept. 11-17

## CRUISES

Caribbean Princess  
Panama Canal Cruise out of  
Ft. Lauderdale  
March 8-18

Carnival Pride Bermuda  
Cruise  
April 8-15

Princess Cruise Alaska on the  
Golden Princess (land/cruise)  
Aug. 14-25

Princess Cruise Alaska on the  
Golden Princess (cruise only)  
Aug. 18-25

We can book any cruise line anywhere you want to cruise.

(All Trips depart from Clubhouse II)

Some trips require a certain amount of walking. The shoe symbol  provides an indication of how much walking may be involved.

Key:  Easy Walking   More Walking    A Lot of Walking

Eyre at Leisure World Travel Office, located in Clubhouse I, is a department of Eyre Bus, Tour & Travel. We offer a full service travel agency that specializes in airline reservations, cruises, group tours, vacation packages, hotel accommodations and auto rental. We have been providing "Excellence in Travel for 60 Years".

**INCLEMENT WEATHER POLICY:** Please call 301-598-1599 after 7 am on the day of a trip to find out if we have cancelled, postponed or are going. If a trip is cancelled, you will also receive a phone call from us once the office is open.

# THOUGHTS & OPINIONS: *From Our Residents*

## A Few Things to Remember

- Relevance:** Make sure that your submission is relevant to the LW community as a whole and not to just one person, mutual, or organization.
- Respect:** Remember that your opinion is about ideas, not individuals, and please avoid personal attacks.
- Brevity:** Being concise will ensure that your opinion will have maximum impact.
- Accuracy:** Document all factual assertions. Opinions that are backed up with facts are more powerful, but only if the facts are accurate.
- Ownership:** All submissions are subject to editing but you will have the opportunity to approve the edits before publication.

*Opinions are strictly those of the writers*

## Should LW Do an Invasive Study of the Existing Administration Building?

The Leisure World News article “Administration Building and Clubhouse I Site Improvements: Frequently Asked Questions” (Nov. 17 edition, page 4) touched on this topic, but, in my opinion, did not delve into sufficient detail. However, the Feb. 2017 Leisure World Community Corporation (LWCC) board of directors packet included a report entitled “Administration Building – Invasive Study” that provided much more information. It provided the scope of work required for a full Administration Building assessment, a schedule, and outlined the problems known in the Administration Building and other factors.

For example, the cost of an invasive study was estimated to be between \$100,000 and

\$150,000, including \$6,000 just to prepare the bid package. The entire project is estimated to take approximately nine months before the final report is submitted to the board.

The report also listed ten applicable State and County codes and addendums that would need to be investigated to bring the 50-year-old building into compliance with current standards. I believe that ongoing repairs and modifications to the Administration Building over time have already indicated deficiencies in these areas, such as removing asbestos, the need to provide upgraded and new mechanical systems, replacement of obsolete electrical systems, compliance with safety/fire code requirements (addition of sprinklers and fire alarm systems), plumbing system upgrades, and compliance with Montgomery County’s new “Green Construction Code.” This may mean a change to the windows and roof system also.

Additionally, the report noted that nearly \$100,000 had to be spent in required, previously unknown infrastructure repairs during the recent upgrading/rehabilitation of Clubhouse I. A list of the items was also included, and it was noted that Clubhouse I had been previously upgraded/rehabilitated in 1995/6. Because Clubhouse I was built at about the same time as the Administration Building, it’s reasonable to believe that similar problems would exist.

There are also costs of delaying the construction of a new building. The report stated that approximately \$550,000 in maintenance and replacement reserve costs could potentially be saved on the existing building if the planned new building continues on schedule. Moreover, the report estimated that a delay in the schedule of the new building could possibly increase the construction costs by four percent to five percent a year.

During discussions at the LWCC board meeting, a point was made that, with an invasive study you “open things up.” When things are sealed, certain adverse situations are not harmful. When opening a ceiling or wall in a 50-year-old building, we may find problems that must be fixed immediately – which could have consequences that must be immediately rectified, like staff relocation, disruption of administrative services, and unscheduled costs.

In summary, I believe the invasive study was not approved by the LWCC board

because the cost of doing the study would only just provide additional information on the known building problems in infrastructure, building code required changes, and that the invasiveness of the study is a risk in itself to the current administration operations. Additionally, if it were determined that rehabilitation of the existing building was not cost effective, the act of doing the study has the effect of increasing the cost for a new administration building, and spending additional years’ worth of maintenance funds on the existing building.

Residents should evaluate the known problems and risk associated with renovation of the existing building relative to the other alternatives to fully understand why an invasive study of the existing administration building was not done.

– Henry Jordan

## Classified Ads Can be Gems

Urge all readers of the Leisure World News to take special note of the “treasures” in the classified ads. As we are transplants from out-of-state, the ads have become the first place for us to look when we need a service – someone to buy a rug that we could no longer use, a number to call about used furniture that we might need, etc. And the best example of all so far is a retired doctor who took excellent care of our beloved, pampered senior dog. He gave her tender loving care and long walks

## Submitting an Item to Thoughts & Opinions

1. Submissions must be emailed to [aclwn@lwmc.com](mailto:aclwn@lwmc.com) or delivered to the LW News Office.
2. Receipt of submissions will be confirmed by email or telephone.
3. Submissions must state the writer’s name, address, telephone number, and email address, if any, but if the material is published, it will include only the writer’s name.
4. LW News cannot guarantee when or if a submission will be published.
5. See LW News Guidelines and Board Standing Rules at [www.residents.lwmc.com](http://www.residents.lwmc.com).

and was well aware of both her needs and our devotion to her. He texted me after each visit so I was able to rest easy and enjoy our vacation. We found his rates to be amazingly fair and his dependability to be outstanding, so we look forward to calling on him for help in the future. And we found out about him in the Leisure World News!

I look forward to seeing what I can discover in the next set of classified ads. Try them; you'll like them.

– Betsy Haas

## Hurrah to our LW Bus and Car Drivers!

I ride the Leisure World buses daily and I am very impressed by all the drivers' friendliness and excellent driving skills – always. Also, the front gate employees and security car drivers do great work for Leisure World. So, hats off to all who drive buses and security cars here at Leisure World! Thank you all!

– Marilyn Holbus

# “Fall” in Love



Paulette Tievny

LW Specialist

Senior Real Estate Specialist

Direct 301-651-3082

Office 301-681-0550

[www.myhomesdb.com/paulette](http://www.myhomesdb.com/paulette)



It's not hard to “Fall” in love with this fabulous community featuring a variety of homes and amenities to fit everyone's needs.

I have properties for every budget starting with garden apartments for under \$100,000 to a single family home for over \$600,000. There are many choices in between including 1, 2, and 3 bedroom high rise and mid-rise condos, and patio homes with garages.

Let me show you all LW has to offer.

If you have a “burning” Real Estate question, I have the answer. Call me today!

## Listing & Selling In LW Since 1989

Apply online  
[signalfinancialfcu.org](http://signalfinancialfcu.org)

or call

301-933-9100, ext. 105

Visit our branch in  
the admin building  
to open an account!



Boost your holiday shopping power with the

# HOLIDAY LOAN

Borrow up to \$15,000 for 36 months at rates as low as

# 5.99% APR

LinkRewards members:  
receive 1 point<sup>2</sup> for every dollar you borrow!

1. APR—Annual Percentage Rate. Must be a Signal Financial Federal Credit Union member in good standing to qualify. All loans subject to credit approval. Monthly payment of \$456.26 for 36-month loan of \$15,000.00 at 5.99% APR. Not all applicants will qualify for the lowest rate. Rates and terms are subject to change and may vary based on creditworthiness and qualifications. Offer applies to applications received by January 31, 2018.

2. Members enrolled in LinkRewards will receive 1 Bonus Point for every \$1 of loan amount—for example, 1,000 LinkRewards points for a \$1,000 Holiday Loan. These bonus points are in addition to the standard 2,500 points awarded to LinkRewards members for all new personal loans. Points will be credited to members' LinkRewards accounts the month following loan funding. Member must be enrolled in a Signal Connect, Signal Direct, or Signal Premium bundle and have a registered LinkRewards account to be eligible. Applies only to Holiday Loans opened between November 15, 2017 and January 31, 2018. This credit union is federally insured by the National Credit Union Administration.

  
signal financial  
Federal Credit Union

# EVENTS & Entertainment

## Education and Recreation Department

### Dec. 1-3: Winter Recitals

The E&R Department is pleased to welcome back students from the Academy Music for their winter recitals. The recitals are performed on Friday, Dec. 1 at 6 p.m.; Saturday, Dec. 2, at 5 p.m. and Sunday, Dec. 3, at 6 p.m. in the Clubhouse II auditorium.

Students of all ages perform a variety of piano and vocal pieces, from the classics to modern contemporary

works. You may also hear some seasonal favorites to put you in the holiday mood.

Performers currently study piano and vocal music with instructors Esther Whitlock and Julia Bryant. The Academy Music is located in Olney.

The performances are free but tickets are required. They can be obtained at the Clubhouse I E&R office. Please bring your Leisure World ID.



Academy Music students perform in the spring 2017 recital. Courtesy photo

## Fireside Forum

### Dec. 3: NYU Professor Discusses Attacks on Free Speech

Freedom of speech and the press is one of the basic tenets of a democracy, enshrined in the First Amendment of the U.S. Constitution. Is it under attack in America today? If so, what would American's Founders say?

On Sunday, Dec. 3, Stephen D. Solomon, professor of journalism at New York University and founding editor of (FirstAmendmentWatch.org), lectures about this current and controversial topic.

Solomon is the author of "Revolutionary Dissent: How the Founding Generation Created the Freedom of Speech." It explores how the political protests during the nation's founding

period gave meaning to the freedoms of speech and press at a time when the crime of seditious libel was used to punish criticism of the government.

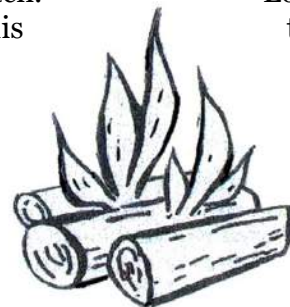
Solomon has a J.D. from Georgetown University Law Center. He teaches graduate and undergraduate courses on the First Amendment. His published articles have won two of the most prestigious awards for business writing – the Gerald Loeb Award and the John Hancock Award for Excellence, as well as the Hillman Prize.

The program is at 2:30 p.m. in the Clubhouse II auditorium. Lois Jordan is the host for the speaker.

– Jonas Weiss



Stephen D. Solomon, courtesy photo



## The Inter-Faith Chapel

### Dec. 6: Georgian Forest Elementary School Concert

by Bonnie Bonner

The Georgian Forest Elementary School chorus, under the direction of Julia Sheriff, is delighted to perform for the Leisure World community again on Wednesday, Dec. 6, at 10:15 a.m. in The Inter-Faith Chapel.

The chorus, made up of almost 100 4th and 5th graders, has worked very hard to put together a program featuring pop music, spirituals, folk music and a winter-themed selection.

The chorus is thankful for the continued relationship between Georgian Forest and the Leisure World community. The community has supported the school for many years through school supply and book donations sponsored by the Interfaith Committee for the Homeless and Working Poor. The Chapel collects socks and toys for the children for holiday gifts.

The Dec. 6 concert is a free event, and tickets are not required. All residents are invited to come and enjoy the children's enthusiastic performance!

## Coming in 2017

The E&R Department is pleased to provide the following programs.

Dec. 1, 6 p.m.	Academy of Music Student Piano and Vocal Recitals
Dec. 2, 5 p.m.	Academy of Music Student Piano and Vocal Recitals
Dec. 3, 6 p.m.	Academy of Music Student Piano and Vocal Recitals
Dec. 8, 10 a.m.	St. John's Episcopal School – Holiday Concert
Dec. 9, 7 p.m.	Akhmedova Ballet Academy – Nutcracker Night
Dec. 17, 2 p.m.	Olney Big Band
Dec. 18, 7 p.m.	Pianist Thomas Pandolfi – Holiday Concert

Watch Leisure World News for more information on these and other upcoming programs throughout the year.



## Dec. 8: Holiday Concert



The St. John's Episcopal School OASIS Musical Theater and Jazz Ensemble, courtesy photo

The St. John's Episcopal School OASIS Musical Theater and Jazz Ensemble are delighted to return to Leisure World with a Christmas concert on Friday, Dec. 8, at 10 a.m. in the Clubhouse I Crystal Ballroom.

Hear a medley of three favorite Christmas songs that includes Irving Berlin's "White Christmas," "Christmas Time is Here" by Vince Guaraldi of Charlie Brown fame, and "Let it Snow" by the legendary Sammy Cahn and Jule Styne that features a joint performance by the OASIS Musical Theater Ensemble and the Jazz Ensemble.

Listen as singers perform "Miss You the Most" by the incomparable Mariah Carey and "Holiday Road" by the popular Lindsay Buckingham. Tap your

toes when the Jazz Ensemble presents a happy combination of early 1950's boogie-woogie style and rumba energy in an entertaining arrangement of "Jingle Bells."

And be enchanted as the concert concludes with a traditional presentation of "What Child is This" that features a very special group of youngsters who will recreate the Nativity scene in a tableau while the Christmas story is being told in verse and song.

Sponsored by the E&R Department, this holiday performance is free but tickets are required. They are available in both clubhouse E&R offices. Please bring your Leisure World ID.

The students of St. John's Episcopal School hope you will come and be a part of their Christmas celebration!

## Dec. 17: Olney Big Band Returns



Olney Big Band, courtesy photo

The Olney Big Band (OBB) returns to Leisure World on Sunday, Dec. 17, at 2 p.m. in the Clubhouse II auditorium, bringing its treasured big band sound to this holiday performance. The program includes traditional swing favorites from the Big Band Era and beyond as well as some holiday melodies in the swing style. The concert features the band's premier vocalist Matt "Sinatra" Williams and two newcomers, the Capizzi sisters, Gabriella and Juliana.

This year OBB celebrates its 15th anniversary as one of the area's premier swing, dance and jazz bands. The band

represents the future of big band music. Specializing in the performance of Big Band Era classics as well as jazz favorites played by all the greats, its mission is to bring this music back into the mainstream for current and future generations to enjoy. So, sit back, relax and let The Olney Big Band take you on a musical journey that will keep you finger popping and toe tapping long after the concert is over.

Sponsored by the E&R Department, tickets for the Olney Big Band concert are \$9 per person and on sale in both clubhouse E&R offices. Please bring your Leisure World ID.

## Dec. 9: 'Nutcracker Night'

The Akhmedova Ballet Academy (ABA) presents a magical "Nutcracker Night" on Saturday, Dec. 9, at 7 p.m. in the Clubhouse II auditorium. It will be an entertaining evening for all ages.

ABA's professional training program students present the most famous dances from "The Nutcracker" in one act that is sure to enchant.

The second act showcases classical masterpieces, contemporary and character choreographies.

ABA is dedicated to providing the finest quality ballet training for young dancers, preparing them to take their places in major companies. ABA is the place where all dedicated and gifted students can realize their dreams of having a professional career in dance.

Sponsored by the E&R Department, tickets for the performance are \$12 per person and available in both clubhouse E&R offices. Please bring your Leisure World ID.



A dancer with the Akhmedova Ballet Academy, courtesy photo

## Dec. 18: 'Holiday Spirit...Piano Works for the Season of Christmas'

The brilliant, young, international concert pianist Thomas Pandolfi returns to the Leisure World stage on Monday, Dec. 18, at 7 p.m. in the Clubhouse II auditorium. Ever wonder how it would sound if an international concert pianist performed music for the holidays? Virtuoso pianist Pandolfi performs a spectacular program entitled "Holiday Spirit...Piano Works for the Season of Christmas."

The program opens with a medley of Irving Berlin's "White Christmas" and Leroy Anderson's "Sleigh Ride" followed by everyone's favorite, "Christmas Time is Here," from "A Charlie Brown Christmas." The program is

rounded out by more traditional holiday favorites and a nod to Beethoven's birthday (Dec. 16) with a performance of Grande Sonata No. 8 in C Minor, Op. 13 "Pathetique."

If you are an aficionado of great piano music and Pandolfi, this is a concert you don't want to miss. Let his brilliant artistry at the piano transport you into the spirit of the holidays!

Following the concert, Pandolfi will sign his CDs. They will be available for purchase, \$20 each, payable by credit card or check to Thomas Pandolfi.

Tickets, \$10 per person, are on sale in both clubhouse E&R offices. Please bring your Leisure World ID.



Hearing is one of the joys of life. Don't neglect it!



From left: Kathryn A. Balestino-Estes, AuD., Cynthia Chrosniak, M.D., Jane Cooke, AuD., Nicholas Mehta, M.D., Heather Schwartzbauer, M.D.

We have a team of audiology doctors and otolaryngology physicians who work together in two convenient locations to help you.

**MEET OUR AUDIOLOGISTS**

Dr. Jane Cooke and Dr. Kathryn Balestino-Estes

- Comprehensive and personalized evaluations
- The latest digital hearing instruments from leading manufacturers
- Solutions to fit your hearing needs, lifestyle, and budget
- Many insurance plans offer hearing aid benefits
- Financing Plans available

We are conveniently located in the Professional Building in the Leisure World Shopping Center above Sandy Spring Bank.

**LEISURE WORLD PLAZA**  
3801 International Drive  
Silver Spring, MD 20906,  
Suite 206

**PROFESSIONAL OFFICE BUILDING**  
18111 Prince Phillip Drive  
Olney, MD 20832, Suite 224

CALL TODAY TO SCHEDULE AN APPOINTMENT!

**301-774-0074**

WWW.MONTGOMERYCOUNTYENT.COM

**\$300 Off**

a pair of digital hearing aids

**\$400 Off**

a pair of digital hearing aids when you upgrade your existing aids



Drs. Chrosniak, Schwartzbauer and Mehta, M.D.

**Education and Recreation Department**

**Jan. 11: The Gershwins**

Steve Friedman returns on Thursday, Jan. 11, at 1:30 p.m. in Clubhouse I for his continuing series of programs on the history of Broadway.

This time, he uses song and lecture to delve into how the Gershwin brothers Ira and George collaborated on Broadway musicals, creating such memorable songs as "I Got Rhythm" and "Someone to Watch Over Me."

These brothers are considered to be among the greatest game changers who developed the modern American musical. Their music and lyrics are still fresh 80-90 years after they were written. What was their unique contribution, and why is it so lasting?

Tickets are \$6 per person and go on sale on Tuesday, Dec. 5, at 8:30 a.m. in both clubhouse E&R offices. Please bring your Leisure World ID.

**Arts in Motion (AIM)**

**Jan. 12: Pepe Gonzalez Quartet**

The Pepe Gonzalez Quartet performs a mix of jazz, Afro-Caribbean and Brazilian music on Friday, Jan. 12, in the Clubhouse I Crystal Ballroom.

Tickets, \$20 per person, checks only, payable to AIM, go on sale beginning Monday, Dec. 11, at 8:30 a.m. in the Clubhouse I E&R office. The ticket price includes hors d'oeuvres and snacks.

Please note Café AIM's new time format: Cocktails begin at 5 p.m., and the show starts at 6 p.m. Reserved tables of eight or more are limited to members only. To join or view upcoming shows, visit (AimArts.net).

— York Van Nixon III

**2017-2018 Movie Schedule**

Sponsored by the E&R Department

Movies are FREE and shown for your enjoyment in the Clubhouse II Auditorium. Please pick up your tickets (limit two per person) on the date indicated below at either Clubhouse I or II. Please bring your Leisure World ID and remember tickets can go fast.

Show Date & Time	Movie	Tickets Available
Dec. 10, 2 p.m.	Manchester by the Sea	SOLD OUT
Dec. 28, 1 p.m.	Rules Don't Apply	Dec. 5
Jan. 18, 1 p.m.	Elvis & Nixon	Dec. 26
Jan. 28, 2 p.m.	The Zookeeper's Wife	Jan. 9
Feb. 15, 1 p.m.	La La Land	Jan. 23
Feb. 25, 2 p.m.	Hidden Figures	Feb. 6

Movies are subject to change.

**Low interest rates getting you down? Let's talk.**

**William P Mason IV, AAMS®**  
Financial Advisor  
17904 Georgia Ave Ste 107  
Olney, MD 20832  
301-774-8500  
www.edwardjones.com

**Edward Jones**  
MAKING SENSE OF INVESTING

Member SIPC

**Custom Drapery**  
Valance, Cornice, Sheers,  
Blinds, and Shades

**30% off**

Free in Home Consultation

Authorized Dealer of  
Grabber &  
Carole Fabrics



**ELA INTERIOR DESIGN**

**Call: 240-676-4300**

■ Education and Recreation Department

# Jan. 13: The Musical Plumer Family

The Plumer Family – Frank and his three children, Antonio, Julia and Cecilia—returns on Saturday, Jan. 13, to perform an eclectic musical program at 4:30 p.m. in Clubhouse II.



The Musical Plumer Family, courtesy photo

This is a show that you, your children and grandchildren can enjoy together.

The show is sponsored by the E&R Department. Tickets are \$6 per person and go on sale Tuesday, Dec. 5, at 8:30 a.m. in both clubhouse E&R offices. Please bring your Leisure World ID.

■ Jewish Residents of Leisure World

# Dec. 18: 'Shalom Italia'

by Jonas Weiss

Jewish Residents of Leisure World (JRLW) and Coming of Age in Maryland present the film "Shalom Italia" (2016, 59 minutes, documentary, not rated) on Monday, Dec. 18, at 1:30 p.m. in the Clubhouse II auditorium.

Three Italian Jewish brothers set off on a journey through Tuscany in search of a cave where they hid as children to escape the Nazis. Their quest is full of warmth, humor and beautiful Tuscan landscapes.

Tickets, \$7, are available for all residents in the Clubhouse I E&R office, checks only payable to JRLW.



JOHN J. FERGUSON, ESQ.  
FERGUSON & WILPON

ESTATE ADMINISTRATION/PROBATE

WILLS POWERS OF ATTORNEY LIVING TRUSTS

REAL ESTATE MEDICAL DIRECTIVES/LIVING WILLS

CALL JOHN FERGUSON  
301-570-3633

3406 Olandwood Court, Ste. 202, Olney, MD 20832  
WE CAN MEET IN YOUR HOME OR OUR OLNEY OFFICE

■ Education and Recreation Department

## Thursday Afternoon at the Movies

# Dec. 28: 'Rules Don't Apply'

The E&R Department is pleased to present "Thursday Afternoon at the Movies." Films are shown at 1 p.m. in the Clubhouse II auditorium. On Dec. 28, the presentation is "Rules Don't Apply" (2016, 2 hours 16 minutes, comedy/drama/romance, PG-13 for sexual material including brief strong language, thematic elements, and drug references).



When Southern beauty Marla Mabrey (Lily Collins) arrives in Hollywood to work for Howard Hughes (Warren Beatty), his driver, Frank Forbes (Alden Ehrenreich), meets her at the airport. Sparks fly immediately between the two, but dating among the billionaire's employees is strictly prohibited.

Directed by Warren Beatty, the film also stars Candice Bergen, Martin Sheen and Ed Harris.

Free tickets, limit two per person, are required and can be obtained beginning Tuesday, Dec. 5, at 8:30 a.m. from either clubhouse E&R office. Please bring your Leisure World ID.

Thursday movie screenings are for your enjoyment; there is no charge. Be sure to pick up your ticket(s) in advance if you plan to attend. Please note: No one will be seated after 1 p.m.

## 4 great reasons to consider buying a home today instead of waiting:

1. Prices Will Continue to Rise
2. Mortgage Interest Rates are Projected to Increase
3. Either Way, You are Paying a Mortgage
4. It's Time to Move on with Your Life

*If the right thing for you and your family is to purchase a home this year, buying sooner rather than later could lead to substantial savings. Call our office today to speak with one of our knowledgeable agents to assist you in today's marketplace.*

LONG & FOSTER  
REAL ESTATE

CHRISTIE'S  
INTERNATIONAL REAL ESTATE

Long & Foster. For the love of home.®



301-598-7500 Office  
Leisure World Plaza

3836 International Drive  
Silver Spring, MD 20906

# HEALTH & Fitness

## ■ Essential Tremor Support Group

### Dec. 7: Next Meeting

The next meeting of the Essential Tremor Support Group is Thursday, Dec. 7, at 10:30 a.m. in Clubhouse I.

The Group seeks member input and encourages all to attend. At the last meeting, a special guest speaker discussed a new tool, similar to a tablet, which monitors a person's essential tremor so that doctors can find the best treatment. Come to the next meeting to learn more about it.

— Marlene Golden

## ■ FISH

### FISH Has Lost and Found, and Maybe Your Keys

by Beth Leanza

The FISH office is the place where the E&R department stores found items after they are turned in at one of the clubhouses. A few car keys are among the more valuable items there now. Other found items include glasses, hats and scarves.

#### Club Information

FISH lends assistive equipment to residents and employees of Leisure World. Items often available include wheelchairs, walkers, commodes and tub stools. All items are donated, and volunteers try to check used equipment for safety. FISH also strongly urges any borrowers to clean an item before using it, and asks that borrowers also clean items before returning them.

FISH suggests a loan period of one to three months for assistive equipment. People who need to borrow an item for longer may do so, and those who wish to keep an item should contact FISH president, Beth Leanza, at (301-598-4569). Please let a family member know if an item came from FISH, so it can be returned when no longer needed.

FISH stands for Friends in Sickness and Health. Other FISH organizations exist around the world, but they all act independently and make up their own definitions for the acronym.

#### Other Donations / Giveaways

FISH also receives donated items that it gives away instead

of lending. Items include incontinence aids (pads, bed pads, adult diapers), blood pressure equipment, comfort cushions and canes. FISH has put many of these giveaways in the closet on the lowest two shelves. Ask a volunteer for assistance.

#### Hours

The FISH office is open Monday to Friday from 10 a.m.-4 p.m. (except major holidays). E&R staff in Clubhouse II can assist you before or after hours or on weekends. The phone number is (301-598-1345).

If no one is in the FISH office, E&R staff can assist you. Those looking for a lost item should ask the staff member for Lost and Found. Found items are in the closet.

#### Volunteers

Volunteers staff the office. Many of the volunteers have a regular shifts and some are subs. Call Beth if interested in becoming a volunteer.

#### Helping other Charities

Other organizations also use FISH as a place to collect donations, and many have a collection box set up at the FISH office. The Lions and the Kiwanis Clubs are ready to receive glasses, hearing aids and can tabs.

FISH has instructions for those who want to donate greeting cards to St. Jude Ranch, or empty prescription bottles to another address. The person donating an item incurs all postal charges.

## □ Health Advisory Committee

### Dec. 8: 'Dealing with Difficult People'

by Sandra McLeskey

On Friday, Dec. 8, at 1 p.m. Jim Gilmore presents "De-escalation: Dealing with Difficult People in Difficult Times." The presentation was originally scheduled for the Clubhouse II auditorium, but has been moved to Clubhouse I.

The presentation is free, but tickets are required, and can be obtained in the Clubhouse I E&R office.

Gilmore is supervisory

therapist at the Montgomery County Crisis Center and will present techniques for defusing a tense situation and preventing "meltdowns." He will also inform attendees about the facilities and mission of the Crisis Center.

The Crisis Center is located at 1301 Picard Drive in Rockville and offers 24-hour in-person crisis intervention, including a hotline at (240-777-4000) to call for emergency situations. People can also go to the Center in person for help.

## □ Health Advisory Committee

### Prescription Drug Take Back Program a Success

by Mary Wells

The second Prescription Drug Take Back Day of the year was held on Oct. 28 at the MedStar Health medical center. Again, the program received an overwhelming response from residents, who dropped off their unused, unwanted and expired medications in an amount comparable to that collected in April.

National Prescription Drug Take Back Day is a program held twice a year in April and October. The

Health Advisory Committee is currently working with MedStar pharmacy to implement an ongoing program for the collection of unused, unwanted and expired medications, so that residents will be able to drop off these medications at any time. The Committee hopes to have this program in place prior to the next Prescription Drug Take Back Day in April 2018.

Thank you to MedStar Health, the Montgomery County police department, and all residents who helped make the program a success.



240-441-1999  
301-460-4247

Manuela Thoms - Owner  
Email: sunshinepjs@gmail.com

Thinking About Renovating?  
We can do everything for you!

- Painting
- Carpeting
- Flooring
- Carpentry

Moving In or Out?  
We can make your home shine!

- Kitchen & baths
- Refinishing
- Carpet cleaning
- Repairs

Free Estimates  
No Job too Big or too Small

Reliable, Trusted,  
Professional Services

Licensed and Insured  
MHIC# 134458

# Health & Fitness In Brief

**Al-Anon Meeting:** Al-Anon (for family and friends affected by alcoholism) meets Fridays at 2 p.m. at Our Lady of Grace Church Parish Center, near Leisure World. Enter through the back door (15661 Norbeck Blvd., Silver Spring). For more information, call Bridget at (301-598-3043).

**Alcoholics Anonymous (AA):** Newcomers welcome. (If you're from outside Leisure World, check in at the main gate.) Meetings are Mondays at noon (Step Meeting) and Thursdays at 6 p.m. (Big Book) in Clubhouse I. For questions, contact Laurie at (240-558-4454).

**Alzheimer's Caregivers Support:** The Alzheimer's Support Group meets the first and third Wednesday of each month at 3 p.m. in The Inter-Faith Chapel library. For more information, call Sunny at (301-438-2446).

**Bereavement Support Group:** If your spouse or long-term partner died in the recent past, you may be able to participate in a twice-monthly bereavement support group that meets on the first and third Tuesday of the month, 2-3:30 p.m., in the conference room at MedStar Health, 3305 N. Leisure World Blvd. Hospice Caring Inc. sponsors group meetings. Registration is required. If interested, please call Anne Baker at (301-990-0854).

**Free Blood Pressure Testing:** Come to Clubhouse I for free blood pressure testing, available on the first and third Tuesdays of the month from 9-11 a.m.

**Memory Café:** The next meeting of Memory Café is Thursday, Dec. 28. Memory Café meets the last Thursday of every month from 2-3:30 p.m. in Clubhouse I. The program provides social engagement for individuals living with early stage memory loss. For more information, contact Lindsey Vajpeyi at (240-428-1342) or (lvajpeyi@alz.org).

**Parkinson's Support Group:** The Leisure World Parkinson's Support Group was created under the auspices of the Parkinson Foundation of the National Capital Area to provide support to patients suffering from Parkinson's disease (PD) and their families and caregivers. The group meets the second Tuesday of the month at 3 p.m. in Clubhouse II. Usually there is a presentation by a speaker with knowledge about PD, physical therapy or some other related subject, followed by a period of Q&A. There are no memberships or fees to pay, and the meetings are open to anyone who may be interested. Questions? Contact Ray Weil at (301-598-3447) or (raywwjr@hotmail.com).

**Stroke Support Group:** You are not alone! The Leisure World Stroke Support Group invites stroke survivors and caregivers to its monthly meetings (except July and August) on the second Wednesday from 1:30-3:30 p.m. in Clubhouse II. No registration is needed, and all are welcome. For more information, contact Sally MacDonald at (240-669-4233) or (sn3macd@aol.com).

## It pays to work with an Authorized Leisure World Specialist

*Offering you the highest level of personalized service and expertise!*

Check Out  
My Client  
REVIEWS on  
Zillow.com



**SOLD**

15411 Bassett Ln.  
1,305 sf, 3 bedrooms,  
2 baths, all new paint,  
lam.floors, large Florida  
room, 3 garage spaces  
Sold \$390,500



**SOLD**

15316 Pine Orchard Dr  
1st floor Warfield  
2 bedroom, 2 bath.  
New carpet & paint.  
Walk-out to patio.  
Sold \$152,500



**ACTIVE**

**Greens F model**  
1,115 sf, 2 bedrooms,  
2 baths, new carpet  
new paint, garage  
parking space  
List \$184,500



**ACTIVE**

**Greens GG model**  
1,210 sf, 2 bedrooms,  
2 baths, new carpet  
and flooring, separate  
laundry closet  
List \$172,995



**CONTRACT**

**Greens G model**  
1,225 sf, 2 bedrooms,  
2 baths, new carpet &  
paint, garage space,  
+private storage room  
List \$209,900

Call for a Free  
Market Analysis  
to find out what  
your home is  
worth!  
240-506-2434

**Barbara Michaluk | Weichert Realtors**

Phone Direct 240-506-2434 / (o) 301-681-0550

Web: BarbaraSellsMDhomes.com | Email: michaluk@verizon.net

Authorized Leisure World® Specialist / E Pro® Certified  
Senior Real Estate Specialist® / Certified Staging Agent®  
Internet Marketing Specialist® / Relocation Specialist®



**Work with an Authorized Leisure World® Specialist**

## GOOD TO KNOW:

Sign-ups for newly advertised E&R events and classes will be taken beginning on the Tuesday after the date of the edition of Leisure World News in which it appears. All sign ups begin at 8:30 a.m. in either Clubhouse I or Clubhouse II, as noted in the event or class description. **Please remember to bring your Leisure World ID.**

# Do you (or your loved ones) need assistance with your care or your pet's care?

CALL

## Dahlstrom & Associates

Senior Support Services

TODAY!



Extensive Experience with Stroke Survivors

### SENIOR SERVICES

- Transportation for appointments, grocery shopping, banking, picking up prescriptions, etc.
- General assistance to help maintain independence
- Help organizing mail, paying bills on time, completing paper-work
- Increased quality of life via companionship to a favorite restaurant, meeting or activity
- Assistance with mobility and/or cognitive issues
- Assistance managing the transition to a skilled nursing facility
- Services beyond those provided by a skilled nursing facility
- And more as needed

### PET CARE SERVICES

- Assistance with pet care as needed for responsible pet ownership
- Transporting pets for grooming and vet appointments
- Pet therapy for individuals and nursing home residents
- General care when necessary due to vacations or hospital stays

Dahlstrom & Associates Senior Support Services will provide the patience, compassion and personal assistance all seniors deserve!



Dr. Carl Dahlstrom  
Owner/Operator  
& Current Leisure  
World Resident

Outstanding Leisure  
World References  
Reasonable Rates

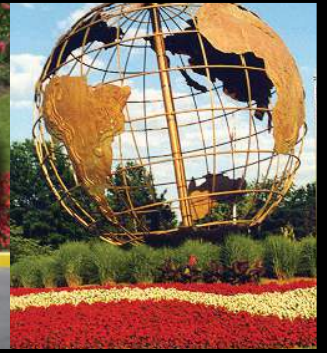
Call 410-499-9362

## Dahlstrom & Associates

Senior Support Services

410-499-9362 • cdahl5090@aol.com



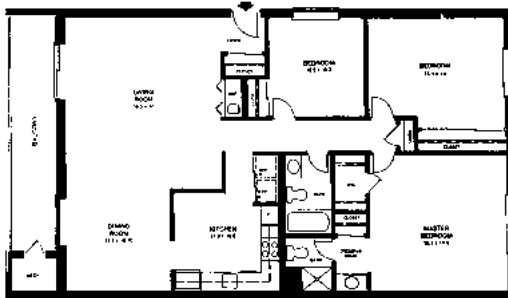


# #1 In LISTINGS In Leisure World®

## Authorized Leisure World® Specialist



**"M" Fairways - \$279,000**  
2 BR, 2 FB, 1530 sq. ft. Rough for half bath, golf course view, garage space.



**"Capri" Model - \$189,000**  
3 BR, 2 FB, 1415 sq. ft. Freshly painted, carport, balcony, plush carpet, eat-in kitchen



**"E" Greens - \$159,000**  
2 BR, 2 FB, 980 sq. ft. Freshly painted, golf course view.



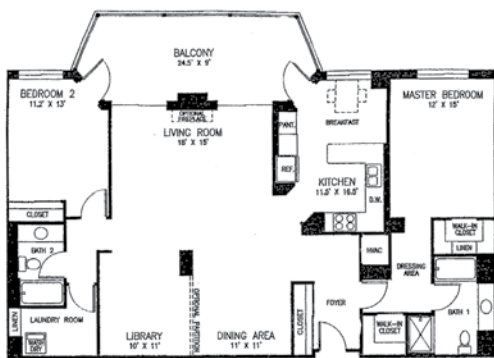
**"K" Model - Greens - \$205,000**  
2 BR, 2 FB, den/library, 1480 sq. ft. Freshly painted, new carpet, garage space.



**"H" Model - Greens - \$215,000**  
2 BR, 2 FB, 1210 sq. ft. Freshly painted, new carpet, tiled bathrooms, golf course view, garage space included.



**"F" Model - Greens - \$179,000**  
2 BR, 2 BA, 1115 sq. ft. First floor, freshly painted and garage space included.



**"Q" Model - Overlook - \$425,000**  
2 BR, 2 BA, den/library, 1520 sq. ft. Like a model, hwd flrs, ceramic in enclosed balcony, stainless appli, cherry cabinets, golf course view, many extras & upgrades.



**"Raleigh" Model - \$89,000**  
1 BR, 1 FB, 990 sq. ft. Freshly painted, enclosed sunroom.

## COMING SOON!



**"S" Model - Fairways - TBD**  
2 BR, 2 BA, den/library, 1460 sq. ft. Garage space included.

Experience for yourself why Stan is #1 in Leisure World®

**Call 301-928-3463 and List with Stan Now!**



Office: 301-681-0550 Email: stanmoffson38@gmail.com  
Web: www.stanmoffson.com



# CLUBS, GROUPS & Organizations

## ■ Ballroom Dance Club

### Dec. 5: Annual Meeting and Membership Renewal

by Joyce Hendrix

All members are welcome to attend the Ballroom Dance Club's annual meeting on Tuesday, Dec. 5, at 10:30 a.m. in Clubhouse I.

Members may pay their annual 2018 dues at the meeting or at the door at any of the 2018 dances.

Dues remain \$10 per person per year, and entitle members to pay \$10 per person for each dance. Non-members and guests pay \$15 per person for each dance.

The Club welcomes ideas and suggestions for the 2018 dances. The bands have been booked for the January through November dances.

#### Holiday Dances

We're looking forward to the Perrie, LLC sponsored Holly Ball dinner dance on Saturday, Dec. 2, and the New Year's Eve dinner dance on Sunday, Dec. 31. Reservations for the New Year's Eve dance can be made at any of the Leisure World Clubhouse I restaurants or by calling (301-598-1330) or (301-598-1331).



#### January Dance

The next Ballroom Dance is Saturday, Jan. 27, at 7:30 p.m. in the Clubhouse I Crystal Ballroom with music by Pocket Change, a band that has been playing at the Club's dances for the last 15 years. This is the group that played for the November dance, and always is a favorite with our ballroom dancers.

## ■ Garden Plot Group

### Plot Renewal Time is Here

by Mary Lalley

Now is the time to renew garden plots for the 2018 season. Pick up an application in the Clubhouse I E&R office, and return it with a check to Susan Curow by Friday, Dec. 1. Of the 261 gardens, 130 renewals have been received. Bins are also available for rent.

Gardeners are asked to return cleaned tools to their proper place and close the shed doors when

finished putting a garden to bed. Water is off for the year.

The Group has held its last meeting of the 2017 season, and meets again in early spring 2018. The Group is looking for a volunteer to write its Club News articles. If interested, contact Betty Kontaxis at (301-438-0004).

Gardeners are encouraged to start planning another interesting year ahead in the dirt.

## A New Group, 'The Fun Bunch,' is Forming

Attention all widows: A new group, The Fun Bunch, is forming for widows who want to go out together to plays, movies, lunch and other activities. Those interested in meeting new friends and enjoying life with other ladies in similar circumstances should call Marlene Golden at (301-438-7773).

— Marlene Golden

## ■ Model Railroad Club

### Dec. 9: See the Trains Run at Open House

by Alan J. Goldstein

The Model Railroad Club holds its Winter Open House on Saturday, Dec. 9, from 10 a.m.-3 p.m. in the lower level of Clubhouse II.

Bring your children and grandkids to the Open House and watch the trains deliver their

loads of passengers and freight.

The kids always make a beeline to the (almost) large as life Lionel O gauge layout, with trains climbing grades and passing over bridges and through mountains. These are the same trains that drew in their grandparents in the 1950's, and later captivated their children, and now their children's children.

The Club's enormous HO gauge layout covers miles of scale terrain, delivering passengers and freight to model destinations from Chicago through the mid-Atlantic and the South, delivering coal from mines to factories, and steel and manufactured goods from factories to their customers.

Both the N scale and O gauge



Children stand transfixed as an O gauge trains roar by. Photo by Alan J. Goldstein

layouts have operating trolley cars that reverse direction at the end of their runs, and the N gauge unit stops along the way to pick up and discharge passengers.

In addition to the Open House, The Club has installed a large G gauge layout in the Administration Building, which will remain in place throughout the holidays.

The Club meets the second Thursday of the month in Clubhouse II, and has working and operating sessions every Monday and Wednesday from 5:30-7 p.m., and Thursday from 2-4 p.m. at the train yards in the basement of Clubhouse II.

For further information or to join, please call Marilyn Chmielewski, president, at (301-438-3259).

## ■ Lions Club of Leisure World

### Jan 22: Daytime Kick-off Meeting

by Maxine Hooker

Are you looking for an organization where you can utilize your gifts and be of service to others? If so, then come join the Lions Club at their kick-off daytime meeting on Monday, Jan. 22, from 11 a.m.-noon in Clubhouse I.

This meeting is open to all members and residents who are considering joining the Club,

but cannot attend an evening meeting.

The meeting provides an opportunity to hear about the specific projects and committees in which the Club is involved, and areas in which your gifts and talents can best be used.

Residents who are interested or have questions may contact Carmiller Dorsey, membership chair, at (carmillerw7@aol.com).





# Dec. 12: Holiday Party and Slideshow

by Fred Shapiro

The Club holds its annual holiday party on Tuesday, Dec. 12, at 6 p.m. in Clubhouse I.

The party features a slideshow with music, consisting of members' memorable photos, arranged by Joanne Mars. Refreshments are served buffet style; and the cost per person will be forthcoming and collected at the door.

The final competition of the year was held on Nov. 28 and featured photos of religious edifices.

Camera Club members are looking ahead to the competitions and programs planned for January and February 2018, which should motivate them to find excellent photo-taking opportunities in the community.

## January Competition

The January competition is open; any photographic subject is acceptable. Restrictions are not enforced on post-production;

any editing software or post-processing procedure may be used for a single image.

The Club understands that post-processing relates to enhancing or deleting but not adding to the photo. The January competition is a trial for post-processing, and the Club's board will seek feedback from members to see how they felt about the results.

## February Competition

The theme for the February photo competition is building interiors. A photo of the interior of any building qualifies for entry into the competition.

The building can be a private home, a public building, museum, theater or any building at Leisure World. The focus of the photo should be on the building – its physical contents and appearance, rather than the people or activities contained therein.

So get those cameras ready, and start looking for photo-

graphic opportunities for both competitions.

## Membership

The Club is reaching out to residents to join and suggest activities for the future. Consider joining the Club, and learn how to

improve your photos. Meetings are held the second and fourth

Tuesdays of every month, and all residents are welcome.



"Flowers with Mountain View" by Alvin Tsneholz

## ■ Arts In Motion (AIM)

# From the Mouths of Babes

Get ready for POETEST 2017. On Saturday, Dec. 16, high school students from Montgomery County, Washington, D.C., and Prince George's County present their work in the Clubhouse II auditorium.

Poets arrive at 1 p.m., and judging begins at 1:30 p.m. A

\$500 prize is awarded to the first place winner. The event is free, and all residents are welcome.

## Winter Solstice Party

Café AIM closes out 2017 with a sold-out meal and concert on Friday, Dec. 8.

– York Van Nixon III



18111

- ✓ Cutting-edge Microscope-centered Dentistry
- ✓ Dentures
- ✓ Gum Treatment
- ✓ Root Canals
- ✓ Sedation Dentistry
- ✓ Bonding
- ✓ Extractions
- ✓ Bleaching
- ✓ Veneers

We Cater to Cowards • Same-day Emergencies • Evening Hours  
Will File Forms for All PPO Insurance Carriers

*Look and feel your best!*



**COMPREHENSIVE FAMILY  
& COSMETIC DENTISTRY**

**\$50 off your first visit**

Not valid with third party plans, new patients only.

Located at MedStar Montgomery Medical Center  
18111 Prince Philip Dr.  
Suite T-17  
Olney, MD 20832

T: 301-774-7887 • [www.OlneyDental.com](http://www.OlneyDental.com)

# Community Plant Swap a Success

by Jean DeSchriver

Approximately 35 people attended the first House Plant Swap organized by the

Garden and Environmental Club. A great variety of plants were available for the taking. Everyone who wanted a new houseplant went home with at

least one. Many beautiful and unique pots and containers were also donated and quickly claimed by attendees.

Because the event was so well received by the community, the Club has decided to make this an annual event.

Before the swap, master gardener Ruth Bortz presented a very informative program about the care of houseplants. Here are a few of her hints:

- Do not water your plants with tap water unless you boil it first. Rain-water is better, if you can collect it.
- Some houseplants, such as Christmas cactus, need one month of darkness and dryness in order to go dormant before blooming.
- Most houseplants need fertilizer.
- Don't over water your plants;

- provide good drainage.
- If you see disease or insects on your leaves, wash them with soap and water.

## Holiday Greens and Dessert Party

Residents and guests are invited to the Club's annual holiday party held on Monday, Dec. 11, at 10 a.m. in Clubhouse I. An



Club member Vivienne Burke arranges a table of houseplants. Photo by Jean DeSchriver

abundance of fresh greens are available for making holiday decorations, or to take home.

Those who do not care to participate in creating with greens are welcome to attend and enjoy coffee, tea and

delicious desserts. The event is an opportunity for plant lovers to get together and socialize.

There is no meeting in January.

## Foot & Ankle Specialists of the Mid-Atlantic

Now the preferred podiatry practice at MedStar Health at Leisure World



End your toes woes!

Walk pain-free!

Visit Dr. K at MedStar Health at Leisure World, 3305 N. Leisure World Blvd., for treatment of your toes, heels, ankles and feet.

Dr. Freedman & Dr. Kathrotiya-Mago

Leisure World Plaza Professional Building

3801 International Dr. • Suite 204 • Silver Spring, MD 20906

www.footandankle-usa.com

Call today: (301) 598-0130

# AUTO BODY

Rockville Central

Just off East Gude Drive

301-424-3500

**FREE ESTIMATES  
IF YOU CAN'T COME TO US  
WE WILL COME TO YOU**

**SPECIAL OFFER**

- Paintless Dent Removal from \$75
- Free Pick up & Drop Off
- Free Towing to Shop
- Free Touch Up Paint
- Lifetime Warranty on All Repairs
- Special Discounts for LW Residents

**We Happily Handle All Insurance  
Claims for You**

**Ask for Richard or Tony**

## ■ Gem, Lapidary and Mineral Society of Leisure World

# Make a Cabochon

by Chuck Mason

Residents can learn how to make a cabochon at the Lapidary Shop in Clubhouse II.

Mark Parker, shop steward, stands ready to teach residents how to use the shop's equipment to produce a beautiful, polished cabochon from a rough piece of semi-precious gem material, such as agate, jasper, tiger eye, obsidian, chrysoprase, rhodochrosite, or maybe even agatized dinosaur bone.

Once a trainee gets the hang of it, he or she can move up to opal, turquoise or lapis lazuli.

Use the slab saws to cut the rough rock into slices, templates to lay out a proposed cabochon ("cab") on the slab. Then, use trim saws to cut away excess

material from the slab, and the dop pot to attach the trimmed material to a dop stick in order to give the material a handle.

Use rigid, coarse diamond



Mark Parker demonstrates how to use a trim saw. Photo by M.B. Mason

grinding wheels to initially shape the cab, and flexible grinding wheels to further shape the cab and remove scratches from coarse grinding. Super fine diamond wheels are used for final polishing.

It's an amazing process to bring hidden beauty from what essentially begins as a rock and ends up as shining gemstone that is ready to be installed in a ring, necklace, belt buckle, bolo or broach.

To arrange a training, contact Mark Parker at (240-723-5860) or (Kb3wuk@gmail.com). Parker is usually in the shop on Monday afternoons beginning at about 2 p.m.

# The Gems Among Us



Barbara Piegari's Monday afternoon class. Back row, left to right: Faith Chin, Donna Leonard, Marvin Sirkis, Angela Chang. Middle row, Barbara Piegari, Ann Bolt, and in front, Jeanette Schuder. Photo by Ann Bolt

Stephen McCleary works on his art in Barbara Piegari's Monday class. Photo by Ann Bolt

by Ann Bolt

Too often people go through their routines and don't appreciate half of what they find, such as the real gems among the Rossmoor Art Guild (RAG) staff.

One such sparkle that caught the Guild's attention is Barbara Piegari. She teaches two classes for RAG and takes the time to elevate her students out of the mundane. With classical music playing, a gentle atmosphere, and helpful suggestions offered, she attends to each student several times during the two and a half hour class.

A student who has forgotten

to bring an item need just wait a minute. Piegari has a magic locker from which she can produce just the thing needed. As students wield palette knives and brushes, Piegari calls on her years of experience.

If a student can ice a cake, then he or she can use a palette knife. Piegari likes a little suggestive style with the Impressionist background and lets her students find their own way as they create their paintings. She teaches Monday and Thursday afternoons at the RAG studio.

RAG is exhibiting paintings at the Signal Financial Federal Credit Union during December.

# Group Decides Areas to Focus Efforts

by Marc and Grazina Narkus-Kramer

Through a process of evaluating LW Green's resources, both financial and human, and after examining the group's effectiveness, members have selected five areas as their focus:

- Continue to increase awareness of recycling, and strive to improve participation in recycling at Leisure World. The group wants to make Leisure World one of the premier communities in Montgomery County for recycling practices.
- Continue sponsoring special events, such as film festivals, environmental speakers and roadside cleanups. In the past, the group has sponsored many educational events about the environment covering a wide array of topics, such as clean energy, global warming, pesticide use, the tree canopy and the potential environmental implications of the construction of a new Administration Building. The goal is to heighten the awareness of how individual and collective action each create an environmental footprint; and how we can reduce it.

- Continue writing articles for Leisure World News, which inform the community about the group's activities and environmental issues impacting Leisure World.
- Recruit additional residents to help educate and advocate for the environment. The group hopes to double its membership this year.
- Work with the mutuals to eliminate the use of harmful pesticides, and to increase the tree canopy by participating in the county's Tree Montgomery Program.

The group will continue advocating for an evidence-based engineering study to determine whether it is possible to renovate the existing Administration Building. Constructing a new building is expected to cost more than \$5.2 million, and the group believes it would damage the environment both in and outside of Leisure World.

Residents who are concerned about environmental issues and would like to be part of the solution are asked to contact co-presidents Marc Narkus-Kramer at (301-598-0104) or (mnarkus@verizon.net), or Janice McLean at (301-847-9169) or (janicewmclean@gmail.com).

## ■ The Vegetarian Society of Leisure World (VSLW)

# Dec. 12: Holiday Luncheon

by Bob Fenichel

The group's holiday luncheon is on Tuesday, Dec. 12, at 1:30 p.m. at the popular, up-scale vegan restaurant, Great Sage, in Clarksville, Maryland.

Great Sage is just 12 miles from Leisure World, east on Route 108. The restaurant is located at 5809 Clarksville Square Dr., and the website is (www.greatsage.com). RSVP for this event by Wednesday, Dec. 6, to secretary Iris Wolf at (leonardbwolf@msn.com) or (301-384-1658).

### Membership

It's the time of year to pay VSLW dues for 2018. The dues are \$10 per year, per person. Please send checks, payable to VSLW, to treasurer Helen

Gross at (3100 North Leisure World Blvd. #710).

To better meet the needs of VSLW's membership, the groups will email a survey to those on the email list. VSLW continues to need increased participation.

### General Information

Additional information on VSLW activities can be found on the group's website at (www.vslw.org). The group also has an email list, through which it makes last-minute announcements. Please contact Iris Wolf to be added to the list.

Everybody is welcome at VSLW activities; you don't have to be a vegetarian to participate. The mission statement of VSLW is "to support group members in maintaining a healthy lifestyle by eating a plant-based diet."

*Meals on Wheels of Wheaton*

**We Can Help!**

**Do you know someone who is home-bound? We deliver nutritious, freshly cooked meals in Leisure World, Silver Spring, Kensington & Wheaton.**

**301-942-1111**

10101 Connecticut Avenue      **Accepting New Clients!**  
 Kensington, MD 20895

www.mowwheaton.org      **Volunteers Needed!**

*Award Winning*

# Dec. 6: 'A Christmas Carol'

by Hannelle Allen

What better way to get a heart-warming start to the holiday season than to come see Fun and Fancy's radio-style production of Charles Dickens' "A Christmas Carol" at the next Club meeting on Wednesday, Dec. 6, at 7:30 p.m. in the Clubhouse II auditorium.

The show is free of charge for Fun and Fancy members who have paid their annual dues of \$10, and \$5 for a one-time entry for non-members. Members are asked to wear their membership cards.

## Play Readers

Chair Irene Lunenfeld Shaulis and board liaison to the Play Readers Group, Elizabeth Brooks-Evans, have established three groups that will meet every two weeks, on Tuesday evenings, Thursday afternoons and Sunday afternoons, respectively.

Thirty-eight members have joined so far, which means a few slots are still available. Those who love reading out loud and

meeting new folks are encouraged to email (lis4972@verizon.net). A wait list will be created when all groups are filled.

## Karaoke Night

At the Club's meeting on Wednesday, Jan. 3, everyone has an opportunity to sing a special song with Blinkie's Karaoke. Both solo and group singing are welcome. Check out the song list at ([www.blinkiesingsllc.com](http://www.blinkiesingsllc.com)), and choose a song.

Scroll down to the list of "songbooks," and click on "Blinkies Karaoke Songbook Online." The list of songs, and their numbers, appear.

Members can also scroll down to the last item on the list of songbooks, "Blinkie's Karaoke Song Slips," and click on it. Type in the desired singer and song, print it out and bring it to the show. Those who plan to sing are asked to arrive by 7 p.m.

## Upcoming Shows

February – Irene Shaulis presents "A Night of Laughter," filled with short skits and comedic moments. Auditions are held

on Saturday, Jan. 13, from 10 a.m.-2 p.m. and Monday, Jan. 15, from 6-8 p.m. in the Clubhouse II auditorium.

March – Stan Jones presents a show based on the Grand Ole Opry.

April – Allan Okin presents a preview of the show, "Broadway Melodies."

May – Hannelle Allen presents another radio play based on a popular sitcom.

All shows are presented on the first Wednesday of the month.

## 'Broadway Melodies'

"Broadway Melodies," coming in April, is a fantastic new production from Fun and Fancy, produced by Carol Neckar and Abigail Murton, with the creative team of Allan Okin, Elaine O'Leary, Gerry Kaufman and Elaine Apter.

Audition dates are Saturday, Jan. 6, Monday, Jan. 8 and Tuesday, Jan. 9 in the Clubhouse II auditorium. Those who would like to audition are encouraged to consider songs from '60s Broadway shows.

## FREDRICK A. ISAACS, M.D., P.C., FACS BOARD CERTIFIED OPHTHALMOLOGIST

Latest Advances in Cataract Surgery including the Restor<sup>®</sup> & LenSx (Femtosecond)  
Treatment of Glaucoma & Macular Degeneration  
(Avastin, Lucentis & Eylea Injections)  
Complete Exams and Contact Lens Exams

## Full Service Optical Shop

Glasses, Sunglasses, Contact Lenses

We offer the latest diagnostic equipment for assessment of retinal disease and glaucoma.

**ON PREMISES:** Visual Fields, Cirrus HD - OCT, Fluorescein Angiography, Stereo Disc Photographs, Corneal Pachymetry and Topography.



**3801 International Drive, Suite 208**  
**Silver Spring, MD 20906**  
**301-598-8500**

LEISURE WORLD PLAZA PROFESSIONAL BUILDING

**EMERGENCY APPOINTMENTS AVAILABLE**

## In-Home or Office Computer Help

PC - Mac - Tablet - Smartphone



Hardware - Software - Network  
Wireless Troubleshooting  
Virus - Spyware Removal  
Data Recovery

**301-495-3390**  
Press "2" if urgent

*Bob Mann*

watza.com  
helpme@watza.com



Serving the Leisure World  
community 10+ years  
5,000+ customer  
appointments!

MasterCard VISA • Insured

WatzNetwork? is a service of Watz, LLC

## Dec. 6: Club Hosts Game Party

by Carole Mund

On Wednesday, Dec. 6, at 12:30 p.m., NA'AMAT hosts a Game Party in the Clubhouse I Crystal Ballroom. All residents are invited to participate in an afternoon of fun and games.

Delicious treats are served, so gather some friends to play games enjoyed by all: mah jongg, canasta, bridge, Scrabble and Rummikub. The cost is \$8 a person, \$5 of which is donor credit. Mah jongg players are asked to bring a tablecloth.

Indicate the chosen game and names of all group participants on the check, and mail

it to Selma Perry at (15101 Interlachen Dr., Apt. 203, Silver Spring, MD 20906). For questions, contact Selma at (301-598-4347).

### Mah Jongg Cards

NA'AMAT receives a small stipend from the Mah Jongg League for each card sold. Mah jongg cards are still \$8 for regular and \$9 for large.

Mail all checks, payable to NA'AMAT, to Natalie Cohen at (15107 Interlachen Dr., #108, Silver Spring, MD 20906). Cards are sent to each individual purchasing; make sure all names and addresses are correct. For questions, call Natalie at (301-438-2663).

### Tribute Cards

NA'AMAT is a charitable organization dedicated to helping NA'AMAT Israel provide educational day care programs, vocational training, legal aid for women, services and assistance for new immigrants as well as centers for the prevention and treatment of domestic violence.

Tribute cards are an excellent way to support and maintain these essential programs as well as to attain donor credit.

NA'AMAT has cards to honor all occasions, from congratulations for a special event to memorial cards.

Each card is \$3.50 if purchased and sent by you, or \$4.50 if sent by Linda Schoolnick, tribute chairperson. For any questions, contact Linda at (301-681-1076).

### Trips

A cruise to Bermuda is planned for April 2018. Call Trudy Stone at (301-438-0016) for more information. See Club Trips in this edition for details.

For more information about NA'AMAT RBZ Club, contact co-presidents Trudy Stone at (301-438-0016) or Gladys Blank at (301-438-9666).

## ■ Jewish War Veterans Charles B. Krieger Post 567

## Dec. 10: Brunch to Include Entertainment, Donations

by Fred Shapiro

With Chanukah just around the corner, Post 567 of the Jewish War Veterans (JWV) has planned a morning of music and entertainment at its brunch on Sunday, Dec. 10, at 10:15 a.m. in the Clubhouse I Crystal Ballroom.

David Jack, well known for his performance of Jewish humor and music, provides the entertainment. His fun new show, "Music is My Life," is a celebration of popular music that features participatory, "singable" songs.

Jack has been featured twice on NBC's The Today Show and the QVC network, and has performed twice at the White House at the invitation of President Bill Clinton. He is probably best known for his exclusive daily performance engagement at Philadelphia's Sesame Place theme park.

Jack has a degree in music from UCLA. His professional theater credits include "Old Jews Telling Jokes," performed at the Bucks County Playhouse in New Hope, Pennsylvania,

and the Trinity Repertory Company in Providence, Rhode Island, as well as performances in "Spamalot," "South Pacific," "1776," "42nd Street," "The Fantasticks" and "Hairspray."

The buffet is \$14 per person and includes eggs, tuna, lox, bagels, salad, coffee, Danish and more. Mail reservation checks,

payable to JWV 567, to Danny Bass at (14805 Pennfield Cir., Apt. 3-209, Silver Spring, MD 20906).

### Bring a Toy

JWV has traditionally requested brunch attendees bring a toy valued between \$5-15 for donation to Children's National Medical Center in

Washington, D.C.

Dedicated member Bernie Kipperman initiated this successful program, and it has been JWV 567's premier cause each year. Members and friends donate hundreds of toys each year for the children.

### Membership

The Post is reaching out to the community to motivate residents with military service to join. With World War II and Korean War veterans aging, there is a need for younger

Jewish veterans to step forward and become active participants.

If interested in joining, attend the Post's monthly meeting on

the first Wednesday morning of the month at 11 a.m. in Clubhouse I, or call Danny Bass at (301-438-8131).

## ■ Rossmoor Woman's Club

## Dec. 18: Thrifty Shoppers' Paradise

by Marcia L. Elbrand

More than a thousand items priced at only \$6 each are for sale on Monday, Dec. 18, from 10 a.m.-2:30 p.m. in the Clubhouse I Crystal Ballroom when the Rossmoor Woman's Club (RWC) hosts its popular factory direct vendor sale.

Favorite items at previous sales have included K&J costume jewelry items, from necklaces and bracelets to earrings and rings. Children's gifts, from socks and hair bows to wallets, toys and fun watches, are also featured. Belts, ties, socks and caps are available for men.

A new, premiere line of upscale fashion accessories is also available, and includes scarves, stoles, umbrellas, tote bags and other trendy gift items, all reasonably priced.

Cash and credit, including

Visa, MasterCard and Discover, are accepted. The public is invited to attend.

"By moving the event to the Ballroom, individuals using walkers and other mobility aids will find shopping easier," said president Aggie Eastham.

### Holiday Luncheon Reminder

RWC members and guests planning to attend the group's annual holiday luncheon on Wednesday, Dec. 6, are reminded that the event is a fine opportunity to donate necessities to local families.

Household items such as aluminum foil, plastic wrap, paper towels and bath tissue, as well as personal care items such as soap, toothpaste, and mouthwash, are welcome. Volunteers will subsequently transport all donated items to A Wider Circle, one of the dozen local charities the Club helps to support.



David Jack, courtesy photo

# Dec. 13: Come Celebrate Chanukah

by Barbara Eisen

Hadassah holds a Chanukah party on Wednesday, Dec. 13, at 7:15 p.m. in the home of Linda Silverstein located at (16 Jaystone Ct., Silver Spring, MD 20905).

The party includes games and beautiful prizes, as well as delicious latkes, applesauce and sweets. The party has a strict maximum of 30 persons, so RSVP quickly to Linda Silverstein at (linjoy357@gmail.com) or (301-879-2887).

A \$10 charge is collected at the door. Make checks payable to Hadassah. Remember, members must be on the RSVP list to attend. Bring an unwrapped toy (about \$10 in value) to be donated to a children's charity, and be prepared to have fun.

## Judaic Study Group

The Judaic Study Group

meets on Monday, Dec. 18, at 1:30 p.m. in Clubhouse I. The topic is the Jewish press – What constitutes “Jewish” press? What is its role? How are controversial issues handled? Is there a difference in the way secular, non-Jewish topics are covered?

Was a Jewish newspaper part of your household growing up? Do you subscribe now? Bring stories that you have found interesting in one of the many publications available to us in print or online, such as “Hadassah Magazine,” “The Forward,” “Washington Jewish Week.”

The group takes great pride in the fact that its own “Hadassah Magazine” is often high on the list of awards presented by the American Jewish Press Association.

Marcia Elbrand leads the discussion, and all are welcome. Contact Peri Schuyler at (301-869-2968) or (perislaptop@aol.com) for further information.

com) for further information.

## Pin Sale

Hadassah continues selling unique, one-of-a-kind pins, handmade by resident fabric artist, Bobbi Gorban. The pins are \$18.

Order forms are available at each Hadassah meeting or pick one up in the Hadassah mail slot in the Clubhouse I E&R office.

For questions, contact Judy Rumerman at (judyrumerman@gmail.com) or (301-680-0850).

## Greeting Cards

Elaine Schenberg and Jan Bloom sell Hadassah greeting cards. The prices are \$2.50 each or five for \$10. Call Elaine at (301-598-0079) or Jan at (301-593-7720) to buy cards between meetings.

## Youth Project

Larelda Gruber (301-598-5922) is chair of Youth Aliyah/

Children at Risk. This project helps disadvantaged children in Israel. The goal is to create a circle of \$1,000, made by individual contributions of \$40. Please send donations to Larelda at (3200 N. Leisure World Blvd. #201, Silver Spring, MD 20906).

## General Information

Hadassah sponsors many activities to further the worthwhile projects it supports in medical, educational, and social programs in Israel and in the U.S.

If interested in knowing more about Hadassah, contact membership vice presidents Ruth Temin at (301-288-7387) or (teminar@comcast.net), Lois Fields at (301-585-9804) or (loisfields2@earthlink.net), or Natalie Rosen at (301-279-5640) or (bnrosen@comcast.net).

## ■ Jewish Residents of Leisure World

# Dec. 17: Jewish Cultural Travelogue

by Jonas Weiss

At the Jewish Residents of Leisure World's (JRLW) brunch on Sunday, Dec. 17, award-winning photographer Jim Auerbach presents a Jewish cultural travelogue through India. He discusses the history, culture and current status of India's Jewish communities.

The brunch is at 10 a.m. in Clubhouse I. Reservations are required by Wednesday, Dec. 13.

Send checks of \$10, payable to JRLW, to Jerry Gordon at (15311 Beaverbrook Ct., Apt. 3A, Silver Spring, MD 20906). Admission at the door, if available, is \$13.

## Religious Services

Rabbi Fink conducts a Reform service in The Inter-Faith Chapel on Friday, Dec. 1, at 7:30 p.m., followed by socialization and refreshments at an Oneg. Cantor Michael Kravitz leads a Conservative

service on Saturday, Dec. 9, at 9:15 a.m. in Clubhouse II. Janet Lazar chants the Haftorah, and Fred Shapiro gives the D'var Torah. On all other Sabbaths, Rabbi Moshe Samber leads an abbreviated religious service at 9:15 a.m. in Clubhouse II, with discussions of the Torah portion and a bit of the Talmud.

## Chanukah

The eight-day celebration of the miracle of Chanukah begins

on Tuesday evening, Dec. 12. JRLW has a ceremonial lighting of a menorah at 6 p.m. in Clubhouse II, with appropriate prayers and songs. Menorahs are lit in both clubhouses throughout the holiday.

## Movie

Coming of Age in Maryland and JRLW shows the documentary film “Shalom Italia” on Monday, Dec. 18, at 1:30 p.m. in the Clubhouse II auditorium. See the Events and Entertainment section of this publication for details.

## Donations

For the Torah maintenance fund, send checks, payable to JRLW, (minimum \$25) to Carol Wendkos at (14805 Pennfield Cir., Apt. 212).

Janet Lazar at (15311 Beaverbrook Ct., Apt. 1B) takes care of donations for prayer books (\$25 minimum).

Send donations for Kiddush or an Oneg (\$25 minimum for either), or Yiskor or general Tzedukah to Susan Weiss at (3739 Glen Eagles Dr., Silver Spring, MD 20906).



### The Salvation Army Family Store

1590 Rockville Pike

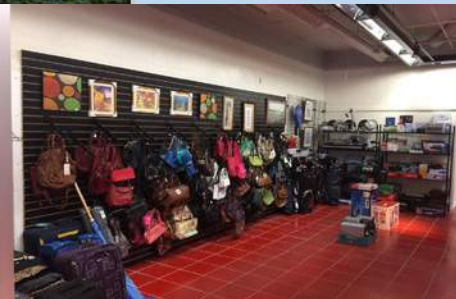
Rockville, MD

Open Monday, Tuesday, Thursday, Friday and Saturday

10am—8pm

Wednesday 9am—8pm

Seniors receive a 10% discount every Monday



## ■ Going It Alone Club

# All Residents Welcome on Trips

by Elizabeth Brooks-Evans

The Going It Alone Club (GIAC) is a social club for single residents, who are welcome to bring single friends and neighbors along to join the Club and experience the fun.

The Club meets every Saturday (known as Saturday Afternoon Live - SAL!) beginning with armchair travel at 2 p.m. in Clubhouse II.

### Armchair Travel

On Saturday, Dec. 9, armchair travelers gather in Clubhouse II to venture to Copenhagen with well-known tour guide Rick Steves. On Saturday, Dec. 16, he leads the group to "Denmark, Beyond Copenhagen."

### Games

Following travel, the games begin at 2:30 p.m. with Bingo played on the second and fourth Saturdays, and Pokeno on alternate Saturdays. Rummikub, bridge and poker are played every week.

The game committee determines what games are played and arranges game set-up. Anyone wishing to join the committee should contact Vivian Penda at (301-847-9537).

### Trips

All residents are welcome to join GIAC for the following trips in 2018:

Thursday, March 22 – Harrington Casino, "Where Winners Play," in Kent County, Delaware.

Thursday, May 22 – "High Tea" at Camellia's Sin Tea Parlor, a side trip to Meadowbrooke Gourds in Carlisle, Pennsylvania, and a stop at Baugher's Farm Market in Westminster, Maryland.

June 4-8, 2018 – "Cape Cod and the Islands," an exciting five-day trip to Martha's Vineyard, guided tours of Hyannis and Sandwich towns, Provincetown and Chatham, a visit to the JFK Museum, and the Eastham Windmill.

Tuesday July 24 – a trip to Sight and Sound Theater in Pennsylvania to see the musical "Jesus" after a smorgasbord lunch at the Bird-In-Hand Restaurant

For more details about this and other trips, contact Joe

Parker at (301-598-3457) or Sylvia Pachenker at (301-598-5325). See the Club Trips section of this publication for more details.

### Membership

Those wishing to sign up for membership and/or trips can do so during SAL! from 1:30-3 p.m. in Clubhouse II when representatives provide information and answer questions about the Club and its activities.

Residents are also welcome to call Club president Marion Callaghan at (301-598-6779) for more information about membership.

She would like for members to join her for dinner (dutch) at the Terrace Room each week after SAL.

## ■ National Active and Retired Federal Employees (NARFE) Chapter 1143

# Dec. 11: Holiday Luncheon

by Joe Cook

This year, the chapter celebrates with a holiday luncheon on Monday, Dec. 11, at noon in the Clubhouse Grille. The luncheon buffet is \$16 and includes salmon, chicken, green beans, baked potatoes, brownies, coffee and tea.

If attending, please contact treasurer Jewel Lee at (jewelalee@msn.com) or (301-801-4007), or secretary Pam O'Dell at (PamandJeff@comcast.net) or (240-461-470) and send a check made payable NARFE Chapter 1143 before noon on Friday, Dec. 8.

### Federal Health Benefits

The Chapter sponsored an ambitious Federal Health Benefits Roundtable on Nov. 20 that included many provider representatives who explained the features of each plan.

As a reminder, any plans that require new enrollment in Medicare Part B must be made by Thursday, Dec. 7.

Recent issues of NARFE magazine are available at (narfe.org) and have important information for

choosing the best health plan for you. On-demand webinars and access to representatives at the NARFE Federal Benefits Institute are also available.

Walton Francis, guest speaker for the last two years at the chapter's membership meetings, has updated the "Checkbook Guide to Health Plans for Federal Employees" for 2018.

It is available for download and mail order. Visit (www.Checkbook.org) for more information.

### Support Federal Retirement

One of the most cost effective ways to support federal retirement is to join NARFE. Chapter dues are \$44 per year. Meetings are currently open to members and non-members. Visit (narfe.org) for more information.

Please contact a member of our executive committee with any questions, suggestions, or if you would like more information on the membership drive:

President John Moens at (johnjots@outlook.com) or

(301-438-3237)

Vice president and legislative chair Joe Cook at (joec37766@gmail.com) or (202-271-0710)

Treasurer Jewel Lee at (jewelalee@msn.com) or (301-801-4007)

Secretary Pam O'Dell at (PamandJeff@comcast.net) or (240-461-4709)

Membership chair John Lass at (johnlass@comcast.com)

Service officer Rich Rothstein at (whobodyelse@aol.com) or (301-598-5760)

## Personal Care Services In The Comfort Of Your Home

Family Owned & Operated  
Serving Montgomery County



- Household chores
- Medication reminding
- Daily living and companionship
- Meal planning, preparation and monitoring of eating habits
- Overseeing activities, such as walking, to minimize the risk of accidents
- Shopping for groceries, with or without client
- Bathing and grooming and general personal hygiene
- Help with planning and making decisions
- Nursing services and many more!

**Call for a Free Consultation and Assessment • 301.717.2212 • www.bestseniorcare.us**

# District 19 Legislators to Discuss Political Issues

by Fred Shapiro

On Thursday, Jan. 4, the Center for Lifelong Learning (CLL) and Jewish

War Veterans Post 567 host a discussion with state legislators from district 19 concerning political issues currently faced in Annapolis.



## THE INTER-FAITH CHAPEL

Join us for Sunday worship services held at 10:00 am during December – February.

We are an inclusive Christian congregation celebrating diversity and seeking unity.

[www.inter-faithchapel.org](http://www.inter-faithchapel.org)  
3680 South Leisure World Boulevard  
301-598-5312

The program is co-sponsored by Jews United for Justice (JUFJ) and features Sen. Roger Manno and Del. Bonnie Cullison, Del. Benjamin F. Kramer and Del. Marice Morales.

The program is at 2 p.m. in Clubhouse I. Light refreshments are served.

The event is free, and registration is not required.

JUFJ is a grassroots organization that brings together Jews and other minority groups from around Montgomery County; Washington, D.C.; and Baltimore to act on shared Jewish values by pursuing justice and equality through civic engagement at the state and local level.

They have been active in seeking higher minimum wages and paid parental leave, as well as fighting discrimination.

The Jan. 4 program covers issues championed by the organization, and attendees will hear from the state legislators



Laura Wallace moderates a 2016 Center for Lifelong Learning program. Courtesy photo

about their 2018 legislative priorities. The program is similar to one held in Leisure World in 2016.

Residents who would like to learn more about JUFJ or have questions about the program should contact Laura Wallace at ([laura@jufj.org](mailto:laura@jufj.org)) or (240-813-4776).



## The Smart Choice for Home Care.



You are a whole person and we believe that we have the opportunity to make your day a little easier and more meaningful. As one of Maryland's original home care agencies, we have earned the trust of thousands of local families. Call today to arrange care for just a few hours or around the clock.

- Expert matchmaking
- Help with Personal Care
- Companionship
- Transportation to Doctors' visits & appointments
- Medication reminders
- Meal prep, housekeeping & laundry
- Care supervised by Registered Nurses

Flexible hours – Consistent caregivers – Simple set up – Available 24 hours a day License: MD RSA #399

[www.capitalcitynurses.com](http://www.capitalcitynurses.com) • 301.652.4344



■ **Democratic Club**

# Dec. 14: County's Political Leadership Honors Ike Leggett

by Emile Milne

On Thursday, Dec. 14, the Democratic Club hosts a gathering of Montgomery County's political leaders to pay homage to County Executive Ike Leggett, who defied the odds to overcome abject poverty and rise to a leadership position in one of the nation's most prosperous counties.

The celebration is from 7-9 p.m. in the Clubhouse I Crystal Ballroom. A large turnout is expected, including current, former and aspiring members of the County Council, the Maryland House and Senate, and the Governor's office. Members of Congress may also attend if their hectic voting schedules allow.

All residents are invited and are encouraged to arrive early.

In December 2018, Leggett completes his third term as County Executive. He made history in 2006 when elected as the first African-American to serve in that office.

In 1986, Leggett was the first African-American elected to the Montgomery County Council where he served four terms as an at-large member. He also chaired the Maryland Democratic Party from December 2002 to December 2004.

Born in Deweyville, Texas, on July 25, 1945, Leggett was raised in small town Alexandria, Louisiana, where he grew up as the seventh of 12 children in a four-room house without indoor plumbing. His father worked at the local saw mill; and his mother infused him early with a thirst for education.

"The only Black professional

people I saw were ministers and teachers," recalled Leggett on his Montgomery County government website. As a student in college, he risked his life in the Civil Rights Movement.

"We knew there were Black lawyers and doctors and other such people—but only by watching national television shows. There weren't any in our community," he said.

Through hard work and struggle,

Leggett earned a bachelor's degree from Southern University, as well as doctoral and master's degrees in law from Howard University and George Washington University. At the time of his graduation from Howard Law School, he held the third highest academic average in the law school's history.

Demonstrating his patriotism under fire, Leggett rose to the rank of captain in the U.S. Army, serving in the Vietnam War.

He and his wife Catherine reside in Burtonsville, Maryland.



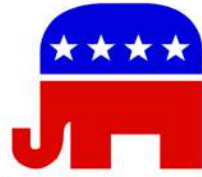
Montgomery County Executive Isiah Leggett, courtesy photo

■ **Republican Club**

# Dec. 19: Holiday Party and Meeting

by Fred Seelman

The next meeting of the Republican Club is on Tuesday, Dec. 19, at 1:30 p.m. in Clubhouse I. Please note that the meeting time has changed, from evening to daytime.



The Club puts the "Party" in Republican Party on Dec. 19 by hosting a Christmas/Hanukkah holiday party. Club members will sing, eat and be merry. Chorus director Karen Collins leads the group in singing holiday songs. Feel free to bring food and drinks, and guests.

Club president Fred Seelman served as a delegate at the Republican State Convention and will report to Club members about it.

**Time/Day Change**

During January and February, the Club meets on the third Monday of the month, instead of on Tuesday. The change allows working residents to take advantage of the Martin Luther King Jr. Day and Presidents Day holidays, and to attend the Club's meetings.

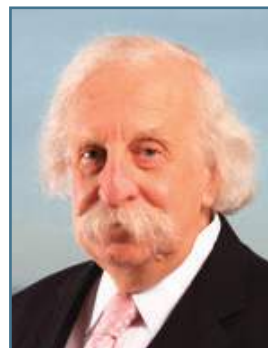
After returning to the third Tuesday at 1:30 p.m. in March, Club meetings change again to the third Tuesday at 7:30 p.m. in April. Contact Fred Seelman at (fseelman@gmail.com) to be added to the Club's emailing list.

Send comments or questions about these or any other Club matters and/or offers to volunteer to Fred Seelman or vice president Ray Spieler at (301-460-3563). And join the Club on Dec. 19 for another quality event.

JGLLAW

FAMILY LAW

## When the Stakes are High



Stephen A. Friedman  
sfriedman@jgllaw.com  
240-553-1194

Stephen Friedman is an eminent courtroom advocate who has successfully tried hundreds of complex and contested divorce and custody cases. Stephen's years of experience often allow him to reach creative settlements that protect client interests without the expense and unpredictability of protracted courtroom battles. Contact Stephen today to discuss your situation.

## You need a lawyer you can trust.

Alimony  
Divorce

Child Custody  
Mediation

Prenups  
Separation

Direct 240.553.1194  
Greenbelt 301.220.2200  
Rockville 240.399.7900

jgllaw.com

JGL JOSEPH GREENWALD & LAAKE, PA  
Maryland | District of Columbia | Virginia

TAKE THE STRESS OUT OF YOUR MOVE!

**CONTINENTAL MOVERS**  
Professional Trained Movers Who Really Care

Local & Long Distance • Packing Services • Pianos and Big Objects  
Owner Operated since 1982 • References • Best Rates in DC  
\$80 x two men • Pickups / Deliveries



www.continentalmovers.net • Cmor53607@msn.com

202-438-1489 | 301-340-0602

# Managing Safari Preferences: Part 1

by Brent Malcolm

Users can go to Preferences to configure Safari to operate however they would like.

Open Safari Preferences by going to Safari > Preferences, and a window with 10 tab selection icons appears across the top. In most Preference tab windows, a small encircled “?” appears. Clicking on the “?” pulls up a Safari Help page for that subject.

In the first icon, General, the initial selection (New windows open with) defines what kind of window appears when Safari is opened. The popup menu choices are: new window, new private window or all windows from last session.

The latter is handy if a user is doing research and wants to easily continue where he or she left off. The second selection (New tabs open with) popup menu allows users to define what they specifically want to appear in the newly opened window.

Clicking on the Home button in Safari’s toolbar takes users to the

Homepage website. Users set the URL of their desired homepage here. File download location uses the popup menu to define where a user wants downloads to go. Normally, the Download folder is the default.

Remember to place any downloaded file in the appropriate folder, such as Documents, Pictures, Music, etc. If the file is an installer, install the software and then trash the installer. Some computers have hundreds of old, downloaded files that are ignored and just taking up space.

The next item, download list, refers to the list of recent downloads that users see when they click the toolbar icon with the down arrow.

Safari Tabs, the second icon, have been around since at least macOS Snow Leopard (10.6). They allow users to have many websites (over 100) available

simultaneously. The Tabs window allows users to specify how new pages open in tabs, and gives users the option of using keystrokes to define how new tabs are opened.

The Autofill icon is where users can define what is automatically filled and if it should be. Safari can autofill certain personal data on websites, such as contact information, user names and passwords, credit card data and other web form information.

The Passwords icon allows users to view, add, edit or delete the user

names and passwords saved for websites. The information comes from the user’s Keychain file but it is easier to work with it here.

In the Search icon, there are two important selections. First, users can select the specific search engine they want for web searches, such as Google, Yahoo, Bing or DuckDuckGo. Be

sure to enable “Include search engine suggestions.” Having it enabled allows users to see a set of search results even before they have finished typing their search term(s).

## Apple Club News

There is no Club meeting in December. The next Club meeting is on Tuesday, Jan. 23.

The Tuesday morning clinic continues through December, except for Saturday, Dec. 23.

Please visit the Club’s website at (<http://mac.computerctr.org>).

## Today’s Tip – Be Careful with Wi-Fi Assist

Wi-Fi Assist enables iOS to use cellular data automatically when Wi-Fi connectivity is poor. That’s a nice idea, but it also means that a user’s iPhone (or cellular iPad) may use lots of expensive cellular data when the user is not expecting it to. Those who worry about cellular overage charges should turn this feature off in Settings > Cellular > Wi-Fi Assist (it’s near the bottom).



## Let Sue Teach You

**Choose the Professional with all the Strategic Teaching Aids...  
Floor Plans, Free Community Booklet, Preferred Riderwood Realtor**

Top 1% of Agents Nationwide • #1 Lister in The Regency, Mutual 25  
Weichert Top Producer • Seniors Specialist  
Community Resident • Former Montgomery County Teacher

Email: [sueheyman@aol.com](mailto:sueheyman@aol.com) • Website: [www.sueheyman.com](http://www.sueheyman.com)  
Office: 301-681-0550

**Sue Heyman 301-580-5556**



**NEW PRICE! \$159,900**

**The Fairways “E” Model**  
2BR, 2FB, fresh paint, new carpet, new cabinets & granite in kitchen, overlooks fountain!



**JUST LISTED! \$449K**

**Creekside “H” Model, Garage**  
2BR+den, 2FB, HWDs, exquisite kit w/ granite open to DR, both kitchen & DR w/ windows!



**LISTING UNDER CONTRACT! \$269,900**

**The Greens “M,” Garage Space**  
Best value in The Greens, 3BR, 2.5BA, large encl. balcony, fresh paint, carpet, lighting, 1530 sf!



**BUYER UNDER CONTRACT! \$500s**

**The Overlook “L,” Garage**  
3BR, 2.5BA, superb kitchen reno, new HVAC, amazing views of golf course & surrounds, all HWDs!



**LISTING UNDER CONTRACT! \$679K**

**Regency “Arts & Crafts” Model**  
13-year young, 2-level, luxury detached home, 4BR, 3FB, great room, gas FP, deck, 2-car garage



**LISTING JUST SOLD! \$86K**

**“Calvert” Co-op Apartment**  
2BR, 1FB, enclosed balcony, new carpet, all utils included in monthly fee, assigned parking!



**LISTING JUST SOLD! \$99K**

**“Hampton” Co-op Apartment**  
2BR, 1FB, full-size w/d in unit, all utils incl in monthly fee, assigned parking!



**LISTING JUST SOLD! \$388K**

**The Overlook “M,” Garage**  
Luxury 3BR, 2FB, gas fireplace & heat, balcony w/ tree-top view, fresh paint, extra storage!



**LISTING JUST SOLD! \$389K**

**“Easton” Patio Home**  
Twin owner’s suites, 2FB, table-space kit., fabulous sunroom w/ green view, two-car garage!



**LISTING JUST SOLD! \$425K**

**“Barstow A” Patio Home**  
3BR, 2FB + sitting rm & sunroom, updated kitchen, 2-car garage, close to Norbeck gate, 1500 sf!

# Dec. 2: Eat and Be Merry

by Beth Leanza

**B**aby Boomers are a fun-loving group who like to enjoy activities together, including potlucks, picnics, movies and theater. The Club recently started having game nights, and another is in the works for January.

The Club recently offered \$775 to someone who works for a Club member whose home was destroyed during Hurricane Maria in Puerto Rico.

## Holiday Party

The Club holds a potluck holiday party on Saturday, Dec. 2, at 5:30 p.m. in Clubhouse II. Members may bring a food dish to share, or alcoholic beverages. Water and soft drinks are provided. If not cooking, please pay \$10 to help with supplies.

Anyone who has not paid their 2018 dues should bring it with them. The cost of the band has been covered.

## Mah Jongg

If you already know how to play mah jongg, join the group on Tuesday or Wednesday nights at 7 p.m. in Clubhouse II. For information, contact Donna Copeland at (dc@grandmathegeek.com).

## Friday Hikes with Dawn

Many walkers meet up at the walk site, but if you want to carpool, contact Dawn Carlisle at (301-598-7098) by Thursday evening. Always bring water to each hike.

Dec. 8 – Matthew Henson Trail (Silver Spring). Meet at the semi-circle of benches near the display map at 1:15 p.m. Bring water. Go south on Georgia Avenue to the light at Hewitt Avenue. Turn left at the light onto Hewitt Avenue. Go a short distance and turn right into the Global/Korean Mission Church’s parking lot. Park at the back of the lot.

Dec. 15 – Great Falls (Potomac). Meet in the Visitor’s Center at 1:15 p.m. Bring water. Go south on Falls Road. In a short distance after crossing River Road, there will be a sign pointing to the entrance

of the park. Turn right into the entrance of the park and continue down into the parking area. Bring your Golden Pass if you have one.

## Sunday Morning Walks

On Sundays at 8:30 a.m., another group treks the three miles around Leisure World Boulevard, and occasionally leaves Leisure World’s premises. They meet up at the corner of Leisure World Boulevard and Arden Court across from Kelm-scot Drive. Sometimes they go out for breakfast after the walk.

## Weeknight Walks

Monday through Friday at 5:15 p.m., join a small group in the Clubhouse I lobby to walk the one-mile Broadwalk in Montgomery Mutual. Walkers don’t make announcements; so if this is your first time, ask around. Introduce yourself!

## Volkssport Walks

One Club member belongs to the local American Volkssport Association (AVA) and updates the Club’s website with information on various walks.

Some walks are seasonal and can be completed within a given date range, meaning you can do them at your convenience at any time within the date range, while others are pre-planned.

Members can receive information about them from a local “walk box.” You don’t

have to be a member, but AVA does encourage members with awards. For more information, visit the boomer’s website and click on “Walks” below the calendar.

## How to Join

Those interested in joining are encouraged to come to a Club event. Dues are \$5 per person for 2018, checks only, payable to Baby Boomer Club. Those who’d like to join can either bring their check to a Club event, or mail it to Club president Pat Leanza at (15111 Glade Dr. 1B). For questions, call Pat at (301-598-4569).

Reminders and invites to

Club events are sent through email, so please include an email address if applicable with the check, or write “no email” on it.

For more information about the Club, type “BBCLWMD” into your search engine. The calendar lists Club events and information on various walking opportunities.

## Not Getting Emails?

Members who joined but are not receiving the Club’s emails are asked to contact Beth Leanza at (301-598-4569) or (bethlea12020@gmail.com).



**HANUKKAH OPEN HOUSE**

**RING HOUSE**  
**Monday, December 11** 1 – 3 p.m.  
 Join us for hors d’oeuvres and sufganiyot  
**RSVP: 301.816.5052**

Can’t make it? Call us and we’ll schedule a private tour.  
 Ring House | 1801 East Jefferson Street | Rockville, MD 20852  
[www.smithlifecommunities.org](http://www.smithlifecommunities.org)

 *Charles E. Smith Life Communities*


## Services for Seniors

Activities of Daily Living	Support Services
• Bathing	• Companionship
• Dressing	• Meal Preparation
• Lifting	• Medication Reminder
• Transferring	• Physical Therapy
• Personal Care & Hygiene	• Light Housekeeping
	• Transportation to Appointments

**What makes ElderCaring different?**

- 2 hour minimum for services – most companies require 4 hours as a minimum
- All caregivers are professionally trained nursing assistants
- The owner of ElderCaring personally meets with you to discuss your needs
- All caregivers are fluent in English
- Personal choice in selection of every caregiver
- Licensed, Bonded, Insured
- 24 Hours Service - 7 Days a Week

**Would you like to receive a brochure in the mail, or set up an appointment?**



**Call 301-949-0060**  
[www.eldercaring2.com](http://www.eldercaring2.com)

*“The quality of care you would want for your parents.”*

# Jocularity Abounds with 'Battle of the Sexes'

by Al Karr

Members of the Comedy and Humor Club have been through marital wars, and the jokes they tell frequently reflect what is fondly called the "battle of the sexes. It's all in fun, portraying witty repartee between husband and wife and the like. Here's an example, as told at a recent Club meeting by new member Evelyn Sturza:

Two Jewish moms meet on the street and mom #1 says she read in the newspaper that mom #2's daughter was engaged to be married. The proud mom relates that the daughter had been married before, to a lawyer, a doctor and an accountant.

To which #1 mom replies: "How can one person have so much "nachas" (Yiddish word for someone's proud accomplishment)?

But we joke about many other things as well, when the Club meets every Tuesday at 1:30 p.m. in Clubhouse II. Come join us for a laugh or 10.

Jocularity abounded at a recent meeting amongst members Evelyn, Gloria Horwitz, Bernie Patlen, Sumner Levin, Rudy Volin, Sam Hack, John Lass and Al Karr. Here are some examples of how they got everyone laughing, often at themselves:

Gloria – The difference between a bankrupt lawyer and a pigeon is that the pigeon can still make a deposit on a new Mercedes.

John – "Getting old" means finding your car in a parking lot, or when a friend compliments you on your alligator shoes, and you're barefoot.

Bernie – The government and technology companies like Google collect much data on your personal life. To wit: A hungry guy phoned Gordon's Pizza, a store he hadn't patronized

before, to place an order. He was told that the last 12 times he bought pizza, he asked for a thin crust, with pepperoni, onions, tomatoes and black olives.

When he asked how Gordon's knew, he was told that Google says so, because they know everything he does. Well, he said, if they know everything, "I'm going to leave the country." The reply: "You can't do that. Your passport expired six months ago."

Rudy – A lady asked the pharmacist for poison, and he asked, what for? She said to kill her husband. He said he couldn't sell it to her, and that he must call the police. She showed him her husband's picture, and the pharmacist replied, "I see you have a prescription."

Sam – A woman says her first two husbands died from eating poisoned mushrooms and the third from asphyxiation. "Why lack of oxygen," she was asked. She said, "Because he wouldn't eat his mushrooms."

**Cheryl's Organizing Concepts**

Help with all aspects of home organizing:

- Managing Paperwork
- Eliminating Clutter
- Packing, Unpacking
- Closets, Kitchens and more

(301) 916-9022  
[www.CherylsOrganizing.com](http://www.CherylsOrganizing.com)  
 \$25 senior discount on first visit for Leisure World residents



**Chairworks Plus Furniture Service**

- Antique Restoration
- Furniture Repair
- Chair Gluing

Serving the Leisure World Community for over 30 years



Rick Sussman  
 301-502-0018  
 410-795-9147

**Time to Clean Your Carpet?**

**"0" DRYING TIME**

**BEWARE**  
 Steam can injure your carpet causing mildew, shrinkage and browning. Our system is totally dry, no wet floors! No leaving dirty water & shampoo in your carpet! No Steam = No Mildew, Stretching or Reappearing Stains.

**SATISFACTION GUARANTEED**  
 Try us, you'll be glad you did!

- All Natural, 100% Safe, Non-Toxic
- Removes Pollen - Helps With Allergies
- Pet Stains & Odors Completely Removed

**Why Use Our Dry-Shampoo Method?**

- Removes Dust Mites & Most Allergens
- Friendly & Courteous Service
- No Gimmicks - No Hidden Costs
- Bonded & Insured
- Dry-Shampoo Upholstery Cleaning Services Available Tool
- Area Rugs, Hardwood & Furniture

**STAIN REMOVAL SPECIALISTS**  
 We accept and honor anyone's coupons at any time! Or use these specials!

**Flood Fire Hoarding Remediation & Repair**

**FREE MOLD INSPECTION**

<p><b>3 ROOMS</b>                  Deep Cleaning/                  Stain Removal  <b>\$125.00</b>                  REG. \$175                  YOU SAVE \$50.00                  DryMaster • 240-205-2218                  With this coupon. Up to 330 sq/ft.                  Some restrictions apply.</p>	<p><b>5 ROOMS</b>                  Deep Cleaning/                  Stain Removal  <b>\$150.00</b>                  REG. \$220                  YOU SAVE \$70.00                  DryMaster • 240-205-2218                  With this coupon. Up to 530 sq/ft.                  Some restrictions apply.</p>	<p><b>LOVE SEAT &amp; SOFA</b>                  Deep Cleaning  <b>\$150.00</b>                  REG. \$200                  YOU SAVE \$50.00                  DryMaster • 240-205-2218                  With this coupon.                  Some restrictions apply.</p>
---	---	---

**CALL US NOW AT 240-205-2218 FOR A FREE, NO-OBLIGATION ESTIMATE**

**DryMaster**  
 CARPET-UPHOLSTERY CLEANING SERVICES  
 SERVING MD-DC-VA  
 Email us: [snkasyllum@aol.com](mailto:snkasyllum@aol.com)  
[www.omegadrymaster.com](http://www.omegadrymaster.com)

*Wish You Were Here?*

*Learn How You Can Enjoy the Vacation of Your Dreams!*

**YOU'RE INVITED TO A COMPLIMENTARY LUNCHEON**

**Friday, Dec. 8, 2017 • 12noon**  
**The Baronessa Italian Restaurant**  
 1302 East Gude Drive • Rockville, MD 20850  
 RSVP by Dec. 6 to [Eva@EvasBestTravel.com](mailto:Eva@EvasBestTravel.com) or 301-202-5124

**Contact us today!**

**EVA'S BEST TRAVEL**

Eva & Mark Greenwald  
 Owners

**301-202-5124 ♦ [Eva@EvasBestTravel.com](mailto:Eva@EvasBestTravel.com)**  
[www.EvasBestLuxuryTravel.com](http://www.EvasBestLuxuryTravel.com)

**ASTA**  
 AMERICAN SOCIETY OF TRAVEL AGENTS

# Fear, Reagan and The Great Wall

by Carlos Montorfano

Rhoda Pillai read an old piece, “Fear,” listing those things that people fear most: height, flight, death, hunger—phobias of all kinds, including about doctors and hospitals.

Verna Denny read “And Fifty Cents,” a memory of life when she was in grade school and banking was an integral part of the curriculum that taught children the importance of thriftiness.

Grace Cooper read her poem “One,” about the time she saw one lonely snowflake announcing winter, and then it soon disappeared.

Jane Hawes read “The Great Wall,” about a visit to China when she was pregnant, and recalling that there were no birds that she could see or hear.

Gladys Blank told of her experiences as a travel agent in Hawaii, which gave her the opportunity to travel to many distant and exotic places. Today, travel brochures and

the computer allow her to keep thinking of travelling, but the aging process dictates that it’s time for her to slow down.

Susie Hooper Billstein talked about knowing Ronald “Ron” Reagan when he was governor of California, and she was the youngest person ever, and only woman, to run a statewide arts group. Having Reagan’s direct phone line helped.

Diane Swift told of her happiness at having found and bought a 1933 anthology of short stories.

Woody Shields read another chapter of his deer hunting book, this one about techniques: stand hunting, still hunting, stalking and driving. Each generation of hunters attempts to further perfect the techniques of the prior generation.

Douglas Kiessling related an unforgettable story from his youth about taking a meandering route to hike around Lake Long during summer camp.

Lee Hardy read “Awesome,” about celebrating her birthday in Texas with family members, including great-grandchildren. Carlos Montorfano read “I Like Dogs, But I Love My Cat”

in homage of his beloved cat, Sweet Potato.

Meetings are on the first and third Thursday of the month at 11 a.m. in Clubhouse I. All residents are welcome.

## Wills, Wealth Planning & Trusts



Luann Battersby  
Leisure World neighbor  
3510 Chiswick Ct

Phone: 301-518-0423  
Email:  
Luann\_Battersby@comcast.net  
Housecall: No charge!  
www.battersbylawoffice.com  
Simple will:  
\$175/person; \$330/couple  
Living will/medical directive \$80  
Financial power of attorney \$90

Probate: flat fee or hourly, not a percentage of estate.

Estate and tax planning.  
I also assist clients in other related matters when they need my help.

**OLNEY**  
ASSISTED LIVING  
Memory Care *by design.*

**Building true friendships.**

For those living with dementia, it’s not the disease that defines the person — it’s the relationships they establish along the way. As a resident at Olney Assisted Living, we encourage your loved one to maintain those relationships and develop new ones, too.

**Bond with your loved one in new and unique ways.  
Connect with Olney Assisted Living today.**

**301.570.0525**  
16940 Georgia Avenue • Olney, Maryland 20832  
www.olneymemorycare.com

Managed by **ARTIS** SENIOR LIVING MANAGEMENT

**Creating positive partnerships the Artis way**

An Equal Opportunity Employer-M/F/D/V

# Leisure World Club Trips

The next deadline for trip submissions is **Monday, Dec. 5**. The trips listed below are sponsored by Leisure World groups and organizations and not by Eyre Leisure World Travel. These trips are **open to all residents**, not only members of the specific club. For information, contact the person listed with each trip. (Do not contact the Eyre Leisure World Travel or E&R office.) Leisure World clubs and organizations that want to be included in this column must provide a submission to the News by 3 p.m. on the Monday deadline. Due to space limitations, the Leisure World News reserves the right to edit or delete submissions. Email your trip information to [lwnews@lwmc.com](mailto:lwnews@lwmc.com).

**Please Note:** Member/Non-Member pricing is at the discretion of the individual clubs.

## Mar. 22 Harrington Casino in Delaware

Come with the **Going It Alone Club** on a trip to Harrington Casino with \$15 in slot play and a \$7 buffet credit (at the discretion of the casino).

The cost is \$25 for Club members and \$32 for non-members. The bus leaves Clubhouse II at 10:30 a.m. and returns at approximately 6:45 p.m.

Sign up at Saturday Afternoon Live (SAL) in Clubhouse II from 1:30-3 p.m. If you have a casino card number, bring it with you at sign up. No refunds will be made after Saturday, Feb. 24, unless a replacement is made. For more information, call Joe Parker at (301-598-3457) or Sylvia Pachenker at (301-598-5325)

## April 8-15 Bermuda Cruise

Join **NA'AMAT** on a seven-night cruise to Bermuda on the Carnival Pride, leaving from Baltimore.

Cabin prices are: balcony \$1,897 per person, double occupancy; outside \$1,562 per person, double occupancy; inside \$1,472 per person, double occupancy. Pricing includes transportation to/from pier, insurance, gratuities, cruise fare, taxes and fees. Passport required.

Call Jill, Eyre Leisure World Travel, to reserve your cabin, at (301-598-1599) or (301-854-6600 x 3225). Questions? Call Trudy Stone at (301-438-0016).

## May 22 Camellia's Sin Tea Parlor and Meadowbrooke Gourds

Join the **Going It Alone Club** for High Tea in Carlisle, Pennsylvania. The tea includes salad, scones, petite sandwiches, desserts and seasonal teas. Then it's off to Meadowbrooke Gourds for a demonstration of crafting gourds into works of art.

On the way home, we stop at Baugher's Farm Market in Westminster, Maryland, for a little shopping.

The cost is \$68 for Club members and \$75 for non-members. The bus leaves Clubhouse II at 10 a.m. and returns at approximately 8 p.m.

Sign up at Saturday Afternoon Live (SAL) in Clubhouse II from 1:30-3 p.m. No refunds will be made after Saturday, April 21, unless a replacement is made. For more information, call Joe Parker at (301-598-3457) or Sylvia Pachenker at (301-598-5325)

## June 4-8 NEW – Cape Cod & the Islands, Massachusetts

Join the **Going It Alone Club** for an excursion that includes Cape Cod, Martha's Vineyard, plus guided tours of Hyannis, Sandwich, Provincetown and Chatham, along with visits to the JFK Museum, the Sandwich Glass Museum and the Eastham Windmill.

The cost is \$460 for Club members and \$467 for non-members, double occupancy (\$135 additional for single occupancy). A \$200 reservation deposit is due at sign up with the balance due by March 31. Trip cancellation insurance is available at sign up.

Sign up at Saturday Afternoon Live (SAL) in Clubhouse II from 1:30-3 p.m. For more information, call Joe Parker at (301-598-3457) or Sylvia Pachenker at (301-598-5325).

## July 24 NEW – "Jesus" at Sight & Sound Theatre

Come with the **Going It Alone Club** to see the musical, "Jesus" at the Sight & Sound Theatre in Lancaster, Pennsylvania, with a smorgasbord lunch at the Bird-in-Hand Restaurant.

The cost is \$110 for Club members and \$117 for non-members.

The bus leaves Clubhouse II at 9:30 a.m. and returns at approximately 7:30 p.m.

Sign up at Saturday Afternoon Live (SAL) in Clubhouse II from 1:30-3 p.m. No refunds will be made after Saturday, June 30, unless a replacement is made. For more information, call Joe Parker at (301-598-3457) or Sylvia Pachenker at (301-598-5325).

### ATTENTION, TRAVELERS!

All Leisure World travelers please note that no group on travel can park more than 12 vehicles overnight/long-term in the Clubhouse II parking lot. Also, parking overnight/long-term is at the owner's own risk.



Find Leisure World of Maryland on facebook at: [www.facebook.com/LeisureWorldofMaryland/](http://www.facebook.com/LeisureWorldofMaryland/)



or follow us on Twitter: @LeisureWorldMd

## Clubs, Groups & Organizations In Brief

**Amateur Radio Club:** Calling all hams! All resident amateur radio operators (hams)—or would-be operators—are invited to join our business meeting/lunch the second Tuesday of each month. We meet in the Stein Room in Clubhouse I at 1 p.m. For more information or to learn about amateur radio, call Bryan West at (301-598-0137).

**Book Club Network:** The network is a collection of book discussion groups of eight to 12 members each, providing a forum for residents to get together with other avid readers to read and discuss their favorite books. Members meet monthly to talk about a specific work chosen by their club. For further information, contact Verna Denny at (301-598-1418) or (verhd@msn.com).

**Clipper Workshop:** Recruiting is underway for members who can help assemble clown hand puppets for Holy Cross Hospital. They are used in the pediatric and emergency rooms. No special skills are needed. Some sewing skills are necessary. We need a sewing machine stitcher. Bring a bag lunch. (We will eat in the lunchroom.) We meet every first and third Monday in Clubhouse II from 10 a.m.-2 p.m., or any portion of the time you can devote to making a child smile. We are looking for donations of cotton fabrics, stuffing, thread and iron-on facing. Contact Joan Mahoney at (240-833-2724) or Jane Brinser at (301-438-2599) for further information.

**Hispanos de Leisure World:** We invite all residents who are Hispano-Parlantes to join us in enjoying the activities of this club, including card games and conversations, every Friday at 3 p.m. in Clubhouse I. Once a month, Latin American and Hispanic movies, with English subtitles, are screened at the same location and same time, 3 p.m. Also, the club organizes a Fiesta de La Amistad on a weekend in the spring and a Christmas dinner in December. And we have organized and presented musical shows about once a year in the Clubhouse II auditorium as well. If interested, contact Maria Blanco, club president, at (301-847-9066) or Carlota "Loty" Goldenberg at (301-598-6869).

**Jewish Discussion:** Hello to all Jewish residents of Leisure World. A discussion group meets on the fourth Sunday of every month (except July and August) at 10:30 a.m. in Clubhouse II. Be prepared for lively discussions about Israel and other topics of Jewish interest. Please give us a try; we think you'll like us.

**Knitting Corner:** Join us the second and fourth Fridays of each month at The Inter-Faith Chapel from 10 a.m.-noon. Our next meeting is Dec. 8. Bring your knitting and enjoy the conversations. We have patterns and yarn for your project. Yarn donations gratefully accepted. Call Joan at (240-833-2724) if you have any questions.

**LW Discussion Group:** The group meets the third Wednesday of each month at 1:30 p.m. in Clubhouse II. Various members lead discussions on current events. At the Dec. 20 meeting, Rose Arnold leads a discussion on the Second Amendment. For more information on this, at times, provocative and always enlightening group, please contact Phil Wendkos at (301-598-0109) or (pwendkos@gmail.com).

**LW LGBT Alliance:** Our group was formed to give members of the LGBT Community a safe and inviting place to come and meet new friends and to get involved in social activities. Our meetings are the third Saturday of every month at noon in Clubhouse II. We welcome everyone; being gay is not a prerequisite. The LW LGBT Alliance strives to provide events and activities to develop strong relationships through education, interaction and fun within our group and with the entire LW community. For additional information and events, email us at (celticwomen1@gmail.com).

**Musical Jammers:** We gather informally once a month with other amateur musicians, singers and lovers of music

to sing, play music and have fun – no dues, no meetings, no agendas, no committees. We meet on the second Monday of every month at 10 a.m. in Clubhouse II. All instruments and voices are welcome. You bring it; we'll sing it. Questions? Call Richard Lederman at (301-598-1132).

**Nextdoor.com:** A friendly place online to share tips and meet neighbors. We already have a record of success helping make Leisure World even better. Free. Please join our 780 members. Go to ([www.nextdoor.com/join](http://www.nextdoor.com/join)) and enter the code QHMXCF.

**The Philadelphians:** We meet on the first Sunday of the month at 11 a.m. in Clubhouse II by the fireplace. If you were born, raised, went to school or lived in Philly, you are welcome to join us.

**The Pittsburgers:** If you were born, raised or lived in Pittsburgh and/or the Greater Pittsburgh area, you are welcome to join us. For more information, call Tania Iwanowski at (301-598-2278) or email (Tania.Iwanowski@yahoo.com).

**Quilt Group:** Come and join our fun group as we work on our individual projects. We now include those interested in all needlework and knitting. We meet the second and fourth Thursdays in the Clubhouse II multipurpose room at 9:30 a.m. If you have any questions, call Clydis Kellough at (301-642-2430). Our next meeting is Thursday, Dec. 14.

**Stitchers Group:** Needlepoint, cross-stitch and more. If you enjoy stitching or would like to learn, we meet every first and third Thursday, from 10 a.m.-noon, in the Clubhouse II multi-purpose room. Come and share your finished work and enjoy stitching with us while we learn new skills together. Call Audrey at (301-598-4903).

**Short Story Group:** The Group reads from a collection of short stories and discusses them together. We are currently reading from "The Oxford Book of American Short Stories," 2nd edition, editor Joyce Carol Oates. On Wednesday, Dec. 6, Beth Leanza leads a discussion of "The Mud Below" by Annie Proulx. On Wednesday, Dec. 20, George Stricker leads a discussion of "Are Those Actual Miles?" by Raymond Carver. The Short Story Group meets at 11 a.m. on the first and third Wednesdays of the month in Clubhouse I. For information, call Beth Leanza at (301-598-4569).

**Stamp and Coin Group:** Are you a philatelist or a numismatic? Join the Stamp and Coin Club. We meet on the first Thursday of each month at 3 p.m. in Clubhouse I. Members discuss their collections, including first day covers, day of issue programs, yearbooks, coins, medals and more. Stamps are shared for "show-and-tell," and we hold an auction of members' stamps. In addition, a gift certificate from Coins of the Realm in Rockville is awarded as a door prize at each meeting. All residents and non-residents are welcome to attend. Annual dues are \$5. If interested, contact Rita Mastro-rocco at (301-814-9196).

**Wood Shop Users Group:** The wood shop is located on the lower level of Clubhouse I; the entrance to the shop is off Gleneagles Drive. It is open Monday through Friday, 9 a.m.-3 p.m. and Saturday 9 a.m.-noon. An experienced monitor is on duty when the shop is open to assist members with their work and provide instructions in the use of shop equipment. Members are often willing to repair and refinish projects for Leisure World residents. For further information, call (301-598-1308).

**Women in the Military:** Are you a female who has served in the armed forces? Join us as we shine a light on the role that women play in serving our country. We also strive to promote awareness of the Women's Memorial at Arlington National Cemetery. We meet every second Wednesday of the month at 10 a.m. in the Terrace Room. Call Barbara Long at (301-438-3427) for more information.

# The Karen Rollings Team



**Karen Rollings**



**Kathy Workman**



**Sherry Felice**

**301-924-8200**

**www.TheKarenRollingsTeam.com**

BERKSHIRE HATHAWAY HomeServices | PenFed Realty

3410 N High St  
Olny, MD 20832  
301-260-7700



## Recent Solds "Around the World"!

Address	Subdivision	Type	Beds	Baths	Asked	Got	Subsidy
3330 LEISURE WORLD BLVD #5-805	FAIRWAYS SOUTH	Hi-Rise 9+ Floors	2	2	\$180,000	\$165,000	\$3,330
3342 CHISWICK CT #59-1B	LEISURE WORLD	Garden 1-4 Floors	2	1.5	\$120,000	\$118,500	\$2,100
15100 INTERLACHEN DR #4-302	LEISURE WORLD	Hi-Rise 9+ Floors	1	1	\$117,000	\$115,000	\$0
3406 CHISWICK CT #47-3C	MONTGOMERY MUTUAL COOP	Garden 1-4 Floors	2	1	\$90,000	\$90,000	\$0
3321 LEISURE WORLD BLVD #98-1A	MONTGOMERY MUTUAL COOP	Garden 1-4 Floors	1	1	\$54,000	\$54,000	\$0
3640 GLENEAGLES DR #10-2A	MONTGOMERY MUTUAL COOP	Garden 1-4 Floors	1	1	\$67,000	\$67,000	\$0
3282 GLENEAGLES DR #64-D	MONTGOMERY MUTUAL COOP	Patio Home	2	1.5	\$232,000	\$228,000	\$0
15111 GLADE DR #12-3A	ROSSMOOR MUTUAL #14	Garden 1-4 Floors	3	2	\$240,000	\$245,000	\$0
15400 BASSETT LN #46-2G	ROSSMOOR MUTUAL #15	Garden 1-4 Floors	3	2	\$199,900	\$193,000	\$0
15310 BEAVERBROOK CT #89	ROSSMOOR MUTUAL #19B	Garden 1-4 Floors	2	2	\$145,000	\$145,000	\$1,370
15210 ELKRIDGE WAY #91-2B	ROSSMOOR MUTUAL #19B	Garden 1-4 Floors	2	2	\$148,900	\$152,200	\$0
15115 INTERLACHEN DR #3-317	THE GREENS	Hi-Rise 9+ Floors	2	2	\$199,900	\$199,900	\$0
15100 INTERLACHEN DR #4-410	THE GREENS	Hi-Rise 9+ Floors	2	2	\$159,900	\$157,000	\$2,500
15101 INTERLACHEN DR #1-926	THE GREENS	Hi-Rise 9+ Floors	2	2	\$216,000	\$203,000	\$0
3210 LEISURE WORLD BLVD #1015	VANTAGE POINT WEST	Hi-Rise 9+ Floors	1	1.5	\$150,000	\$148,000	\$0
14809 PENNFIELD CIR #309	VILLA CORTESE	Garden 1-4 Floors	2	2	\$242,900	\$225,000	\$0
14809 PENNFIELD CIR #409	VILLA CORTESE	Garden 1-4 Floors	2	2	\$209,900	\$206,500	\$0



**UNDER CONTRACT!!!**

**15300 Beaverbrook Court, #3H**

Our buyers found the perfect new place to call home! Call us TODAY to see how we can help you!



**FOR SALE!!!**

**15100 Interlachen Drive, #126**

2 Bedroom, 2 Full Bath condo with stunning views of the golf course!!



**UNDER CONTRACT!!!**

**3480 Gleneagles Dr, #79-C**

Two story townhome in the best location! Features 2 bedrooms and lovely patio!



MORTGAGE LOAN OFFICER  
Office (240) 403-1972  
skeenum@monarchmortgage.com  
600 Jefferson Plaza Suite 400  
Rockville, MD 20852  
NMLSR # 459670

**Scott Keenum**

- ✓ Resident of Leisure World & represented Leisure World at the Maryland Senior Olympics winning a Silver Medal in Pickleball
- ✓ U.S. Army Veteran
- ✓ 30 Years of Experience in the Mortgage Industry



## Need New Carpet?

Serving Montgomery County for 30 years! We are the company for all your flooring needs. Carpeting, Hardwood, Laminate, Ceramic, Marble, Commercial, Residential. We do it all! We carry major brand names in carpeting and hard surface flooring.

**Trust our experience and knowledge of the industry.**

**301-924-7331** 18167 Village Center Drive  
Olny, MD 20832  
(in the Olny Village Center)

www.carpetandvacuumexpo.com

CARPET & VACUUM  
**EXPO**

**\$100**  
off installation!  
**301-924-7331**

only for purchases over \$1000. Offer not valid with any other offers.



NEW YEAR'S EVE

**Clubhouse Grille**

New Year's Eve Menu

\$35 Per Person

Choice of:

**Garden or Caesar Salad**

Choice of:

**Surf & Turf**

*Grilled Filet Mignon, Butter Poached Lobster Tail, Yukon Gold Mashed Potatoes, Honey Glazed Carrots and Patty Pan Squash*

*or*

**Jumbo Lump Crab Cake**

*Roasted Fingerling Potatoes, Sweet 'n Sour Slaw and Grilled Lemon Aioli*

*or*

**Veal Ossobuco Milanese**

*Braised Lamb Shank, Lemon Gremolata, Creamy Polenta and Red Wine Sauce*

*or*

**Grilled Salmon Filet**

*Bernaise Sauce, Yukon Gold Mashed Potatoes, Honey Glazed Carrots and Patty Pan Squash*

*or*

**Pan Seared Duck Breast**

*Sour Cherry Gastrique, Roasted Fingerling Potatoes and Asparagus*

***Finish your meal with a selection from our dessert menu.***

Please call the Clubhouse Grille at 301-598-1330 to make a reservation

Clubhouse Grille Hours: Wednesday – Saturday: 4 p.m. – 10 p.m. | Brunch, last Sunday of each month: 10 a.m. – 3 p.m.  
Stein and Terrace Room Hours: Sunday: 9:30 a.m. – 8 p.m. | Monday – Tuesday: 9 a.m. – 8 p.m. | Wednesday – Saturday: 9 a.m. – 9 p.m.  
For Clubhouse Grille Reservations, call 301-598-1330 | For Stein and Terrace Room reservations, call 301-598-1331

# SPORTS, GAMES & Scoreboards

## ■ 10-Pin Bowling League

### Winners Pass C.A.S.H. to Take Top Shot

by Rita Mastrorocco

As winter approaches the following bad weather rule is in effect: If Montgomery County schools are either closed or on a two-hour delay based on snow or icy conditions, the league does not bowl.

The league is based on handicaps with averages for the bowlers ranging from 68 to 175. Even if you have not bowled in years, come out and join the fun.

The top league standings as of Nov. 17 are: Winners in first place; C.A.S.H. in second place; and Half and Half in third place.

#### Top scores for the week of Nov. 10 are:

Scratch Game – Hooks N Curves, 707 pins  
Scratch Series – Hooks N Curves, 1,901 pins  
Handicap Game – Hooks N Curves, 938 pins  
Handicap Series – Hooks N Curves, 2,594 pins  
High Average Men – Steve Mueller, 177 pins  
Scratch Game Men – Chuck Osher, 229 pins  
Scratch Series Men – Chuck Osher, 580 pins  
Handicap Game Men – Chuck Osher, 290 pins  
Handicap Series Men – Chuck Osher, 763 pins

High Average Women – Chris Porter, 166 pins  
Scratch Game Women – Chris Porter, 164 pins  
Scratch Series Women – Chris Porter, 470 pins  
Handicap Game Women – Jeanne Rossomondo, 264 pins  
Handicap Series Women – Kathy Viney, 707 pins

#### Top scores for the week of Nov. 17 are:

Scratch Game – Hooks N Curves, 627 pins  
Scratch Series – Hooks N Curves, 1813 pins  
Handicap Game – Winners, 903 pins  
Handicap Series – Winners, 2593 pins  
High Average Men – Steve Mueller, 175 pins  
Scratch Game Men – George Izumi, 214 pins  
Scratch Series Men – George Izumi, 508 pins  
Handicap Game Men – George Izumi, 269 pins  
Handicap Series Men – Bill Thomas, 700 pins  
High Average Women – Chris Porter, 164 pins  
Scratch Game Women – Chris Porter, 172 pins  
Scratch Series Women – Chris Porter, 451 pins  
Handicap Game Women – Julie Thomas, 244 pins  
Handicap Series Women – Julie Thomas, 658 pins

You do not need to be a good bowler to join. Come and join us for fellowship, fun and easy exercise. There is no long-term commitment.

The league bowls every Friday morning with practice starting at 9:20 a.m. at Bowl America, 1101 Clopper Rd. in Gaithersburg. The cost for the three games of bowling, the use of bowling shoes and balls, and unlimited cups of coffee is only \$10. If you are interested, please call Rita at (301-814-9196).



**Life's A Trip, Inc.**  
**Cruise and Travel**

With over 35 years of travel expertise, we can plan the perfect adventure for you!

CALL OR STOP BY TODAY!  
301-421-4400 • Info@lifes-a-trip.com  
1536 Spencerville Ct. #101  
Burtonsville, MD 20866

### Dec. 9: Golf Party at the Pro Shop



Athletic wear for all seasons is available at the Pro Shop. Photo by Leisure World News

by Leisure World News

Rediscover what Leisure World's Golf Course has to offer at a holiday party on Saturday, Dec. 9, from 11 a.m.-5 p.m. in the Pro Shop.

All residents are invited to stop by the Pro Shop to enjoy light refreshments and holiday spirits, and browse the new and improved selection of athletic wear and accessories. Golfers can redeem their tournament credit by purchasing items.

The Pro Shop sells short and long-sleeved shirts, light jackets, warm quilted vests,

Bermuda shorts, visors, hats, sunglasses and hand towels. Some items feature the Leisure World logo.

Get a jump on your holiday shopping by purchasing stylish and comfortable attire.

Come renew your membership for the 2018 season, try a three-month trial membership, sign up for a lesson, or share the joy of golfing with friends and family by purchasing an associate membership for someone this holiday season.

For more information, call the Pro Shop at (301-598-1570).

## ■ Duplicate Bridge Club

### Dec. 12: Duplicate Game

by Jerry Miller

The Leisure World duplicate game on Tuesday, Dec. 12, is included in the District 6 Sectional Tournament at Clubs and awards silver master points, which are at a higher level than the usual club games.

While the American Contract Bridge League fees for this game are significantly more than for the Club's usual games, the Club will bear the extra cost, so the entry fee will not increase.

#### Bridge Lessons

The Club plans to sponsor bridge lessons beginning in January. One class is for beginners, while the other is for those who have played before, but

want to improve their play and learn new bidding conventions.

Roz Dixon, director of Tuesday night duplicate games and an experienced teacher, instructs the lessons. More details will be forthcoming.

#### Newcomer Duplicate Bridge

The next newcomer duplicate bridge session is on Monday, Dec. 4, at 6:45 p.m. in Clubhouse I. The hands are pre-duplicated, with copies of the hand records available at the end of the game.

Experienced duplicate players will be present to answer questions and provide advice when requested. As always, coming as a pair is preferred, but singles are matched up as possible. A charge of \$2 per person is collected.

## ■ Tuesday and Friday Duplicate Bridge

Compiled by Jerry Miller

For Tuesday games, Flight A includes all players. Flight B includes only ACBL member pairs, each with less than 1,000 master points.

### Tuesday Nov. 7, 2017

#### North-South

##### Flight A

1. Stephan Billstein – Nadyne Cheary
2. James Summers Jr – Stephen Weiner
3. Mary Lafferty – Patti Anschutz
4. Angela Riani – Betti Goodman
5. Ann Ruth Volin – Robert Catlett
6. Rosmarie Sutor – Thomas Leahy

##### Flight B

1. James Summers Jr – Stephen Weiner
2. Mary Lafferty – Patti Anschutz
3. Angela Riani – Betti Goodman

#### East-West

##### Flight A

1. Gerald Lerner – Eugene Fisher
2. Liz Ferraro – Alan Ferraro
3. Aaron Navarro – Patricia Haggerty
4. Susan Weiss – Sue Swift
5. Marcia Fletcher – Rae Newman
6. Doug Brasse – Merrill Stern

##### Flight B

1. Liz Ferraro – Alan Ferraro
2. Susan Weiss – Sue Swift

### Friday, Nov. 10, 2017

#### North-South

1. Steve Billstein – Jim Cowie
2. Stan Rosen – Marilyn Rubinstein

#### East-West

1. Dorothy Cobb – Aaron Navarro
2. Liz Ferraro – Alan Ferraro

### Tuesday, Nov. 14, 2017

#### North-South

##### Flight A

1. Ann Ruth Volin – Rae Newman
2. Alan Ferraro – Liz Ferraro
3. Alfred Caponiti – John Ryan
4. Rosmarie Sutor – Shirley Light

##### Flight B

1. Alan Ferraro – Liz Ferraro
2. Rosmarie Sutor – Shirley Light

#### East-West

##### Flight A

1. Jerry Miller – Gerald Lerner
2. Nadyne Cheary – Saul Penn
3. Paul Chassy – Reina Chassy
4. Susan Weiss – Bernice Felix

##### Flight B

1. Susan Weiss – Bernice Felix

### Friday, Nov. 17, 2017

#### North-South

1. Shirley Light – Rosmarie Sutor
2. Lewis Gold – Arthur Podolsky
3. Angie Riani – Palma Seeger

#### East-West

1. Lewis Gold – Arthur Podolsky
2. (tie) Sharon Strong – Beth Harper
- (tie) Ted Michos – Sue Swift

## ■ Wednesday Night Chicago Bridge

Compiled by Abigail Murton

### Nov. 8, 2017

1. Anna Pappas, Bob Bridgeman, 4830
2. Jack Looney, Bruce McKay, 4,390
3. Virginia Pace, Joanne Bland, 4,140
4. Abigail Murton, Doug Brasse, 3,800

### Nov. 15, 2017

1. Joyce Riseberg, Dick Riseberg, 6,070
2. Marcia Elbrand, Monroe Elbrand, 4,520
3. Abigail Murton, Doug Brasse, 4,350
4. Sylvia Forman, Betty Hollrah, 4,300
5. Leloy Cottrell, Joan Joyce, 4,210

## ■ Thursday Afternoon Ladies Bridge

Compiled by Jackie Harrell

### Nov. 9, 2017

1. Ruthe Slone, 3,410
2. Ruth Koslow, 2,960
3. Vicky Shaz, 2,740

### Nov. 16, 2017

1. Evelyn Armstrong, 3,250
2. Bernice Star, 3,160
3. Ruth Kozlow, 3,070

## ■ Friday Bridge

Compiled by Betti Goodman

### Nov. 3, 2017

1. Joyce Fischer, 3,200
2. Jerry Feldman, 2,440
3. Mort Faber, 2,380
4. Bernice Cohen, 2,290

### Nov. 10, 2017

1. Jerry Feldman, 3,310
2. Leonard Bosin, 2,950
3. Joyce Fischer, 2,130
4. Bernice Cohen, 2,100

# LEISURE WORLD®

55+ "Resort" Community

18 Hole Golf Course

Resident \$ 800 Annual Dues (No Green Fees)

Non-Resident \$ 900 Annual Dues (No Green Fees)

"Country Club Feel"



2017 To-Date - Oct 10th

Sold: 18

Ratified: 2

Listings: 14

Please put my Winning Strategies to work for you and your Friends, Neighbors or Relatives

Your Referrals are greatly Appreciated



Douglas Brasse

Cell: (301) 448-8708

dbrasse@weichert.com

Aspen Hill/ Leisure World Plaza

3816 International Drive

Silver Spring, MD 20906

Office Fax: (301) 598-9325

MAIN OFFICE: (301) 681-0550

Office Fax: (301) 598-9325

MAIN OFFICE: (301) 681-0550

dougbrasse.com



Authorized Leisure World® Specialist

Leisure World® is a registered trademark owned by RRLH, Inc. Doug Brasse is authorized by RRLH, Inc. under license to use the Leisure World® service trademark



I WILL  
HEAR  
BETTER  
FOR THE  
HOLIDAYS

Join us for our  
**BETTER HEARING EVENT**  
December 12-15

Space is limited — call today to schedule an appointment!  
**301.637.7238**

**\$500 OFF**

an AGX5, 7, or 9 two-device system  
Expires 12/31/17.

**COMPLIMENTARY  
CONSULTATION**

with free clean and check of current  
hearing instruments. Expires 12/31/17.



Hearing HealthCare, Inc.

Doctors of Audiology

Serving the community since 1996

Wheaton • 3913 Ferrara Dr

Rockville • 2403 Research Blvd, Ste 100

HearingHealthCareInc.com



AudigyCertified™

# Communicationg in the Language of Chess

Esperanto Day is Dec. 15, the birthday of L.L. Zamenhof, a medical doctor who invented the language. As a “constructed” easy-to-learn language, Esperanto was designed to serve as a second language for international communication.

Zamenhof introduced it in 1887 in a book published in Russian, “International Language: Introduction and Complete Textbook.” Because Zamenhof used the pen name “Doktoro Esperanto,” people learning the language simply called it “Esperanto.”

Historians had difficulty describing Zamenhof’s ethnicity. Some called him a Polish Jew, while others called him a Lith-

uanian Jew or a Russian Jew. He was born and lived in the Bialystok area of what is now Poland. Poland, then part of the Russian Empire, did not become an independent country until 1918, one year after his death.

The “L.L.” in his name also posed a problem because of language differences. Was it Ludwik Lazarz (Polish); Lyudik Lazar – “Leizer” (Russian); Ludwig Levi Lazarus (German); Ludwig Lazarus (English) or Ludviko Lazaro (Esperanto)?

Considering national pride in languages, Esperanto was not intended to replace national languages, but to augment them as a second language, or “neutral tongue.” Zamenhof

believed this would facilitate international communication, and thereby promote peace.

According to estimates, about 150,000-300,000 people speak it proficiently today and up to two million people are familiar with it to some extent.

In the 1930’s, both Hitler and Stalin banned the language. Hitler regarded it as part of “an international Jewish conspiracy.” Portugal and Spain also banned it as “a threat to national purity.” In some instances, it has been associated with communism as a “proletariat language” and with anarchy as a “nationless language.” With the advent of the computer, as a practical matter, English has become the world’s second language.

Currently, the Universal Esperanto Association (UEA), headquartered in Rotterdam, organizes annual meetings commemorating the anniversary of the language. The World Esperanto Congress meets in different countries each year, with participants averaging about 2,000 from 60 countries.

The UEA also publishes a magazine and books in Esperanto, and maintains a library. Through its office in New York City, it conducts relations with the U.N., where UNESCO has granted “consultative status” to the UEA.

As a classic international game, chess deserves to be included in an international



language. Residents will be pleased to know, therefore, that Esperanto has words for all chess pieces, and for chess terms, such as checkmate, stalemate and perpetual check.

For example, “mortigas” is the word for checkmate (to immobilize) and the word for chess is “sako” (pronounced shakko).

In fact, chess enthusiasts in many countries embraced Esperanto as a means of reducing translation costs for international tournaments. Also, it was used for international chess publications and for notating chess moves in international correspondence between players.

Chess players don’t need to learn a foreign language to play chess at Leisure World. Players don’t need to shout or whisper; they don’t need to speak at all. In the diagram on this page, White’s Queen is threatening Black’s Pawn at b4, checking the King and capturing Black’s Rook at a5. However, it is Black’s turn to move. What is Black’s best move?

The answer follows our usual message that the Chess Club meets Monday, Wednesday and Friday from 1-4 p.m. in Clubhouse II. For further information, call Club president Bernie Ascher at (301-598-8577).

ANSWER: Black moves the Rook to a1, checking the King and forcing White to move the King to e2. Black then moves the Bishop to d3. Checkmate!

So, do not wait for the next Esperanto Day. Do not wait for the Esperanto Congress to meet. Do not wait for the creation of another international language. Play chess now!



## Kitchen & Bath Remodeling

### 301-598-8400

*SERVING LEISURE WORLD SINCE 1988*

**Cabinetry, countertops, tile, custom carpentry.**  
**Safety First- Tub to Shower Conversions.**  
**Price match guarantee on all projects.**




MHIC# 36674



Kathleen Kane, Assoc. Broker

## Kathleen and Eileen Kane

**Honored To Serve You For 35+ Years With Cathy Gilmour Real Estate And Proudly Continuing That Same High Level Of Service With Long & Foster**



Eileen Kane, Assoc. Broker

**A** – Gorgeous view from enclosed balcony of this spacious 1 bedroom, 1 bath apartment on the 7th floor in **Fairways South**. Table space kitchen, fresh paint and new wall to wall carpet, just waiting for your updates to make it perfectly yours. **\$120,000**

**F** – In **Villa Cortese**, Building 2 on the 4th floor, 2 bedrooms, 2 full baths, den, living room, formal dining room, table-space kitchen, enclosed balcony. Large garage space! California closets! Engineered wood floors! **\$345,000**

**B** – In **Turnberry Courts**, Building 3 on the 5th floor, two bedrooms, two baths, living room, dining room, table-space kitchen,

enclosed balcony, light and bright. **\$188,900**

**Elizabeth** – Largest apartment in **Montgomery Mutual** (over 1300 sq. ft.). Two bedrooms, 1-1/2 baths, grand living room, dining room, windowed kitchen looks out to atrium. Freshly painted and ready for you to move in. **\$125,000**

**SELLERS** – This is YOUR market! Inventory of homes is low and interest rates remain low. This is the time for you to make the move you’ve been planning. Contact Kathleen or Eileen to assist you.

**BUYERS** – With low inventory & still very low interest rates, now is the time to put your house on the market and move to Leisure World.

Dedication makes the difference!

## LONG & FOSTER REAL ESTATE, INC.

Residential & Commercial Real Estate • Mortgage • Title • Insurance • Property Management



Direct: 240-460-8647 | Leisure World Plaza Office: 301-598-7500 | [Kathe.E.Kane@Gmail.com](mailto:Kathe.E.Kane@Gmail.com)

## Sports, Games & Scoreboards In Brief

**Bid Whist:** Do you know what Sport the Kiddy, Boston Time, Rise and Fly all mean? If you like the game Bid Whist and would like to play one day per week, contact Jessie at (314-374-4501).

**Bridge:**

• **Tuesday and Friday Duplicate Bridge** games are at 7 p.m. in Clubhouse I. New players with partners are welcome. Have fun. Win masterpoints. Questions? Call Nadyne at (301-598-5677).

• The **Wednesday Night Chicago Bridge Group** is looking for new members. The group meets every Wednesday in Clubhouse I. Play begins promptly at 6:45 p.m. Bring a partner and be ready for a few hours of friendly games. Questions? Call Doug at (301-448-8708).

• **Men's Bridge** seeks players. We meet Mondays and Thursdays at 12:30 p.m. in Clubhouse II. No partner needed. Please, no beginners.

• **Thursday Ladies Bridge** welcomes more card players. If interested, call Jackie Harrell at (301-598-4341).

**Cribbage:** We meet for 150 minutes of competitive fellowship Thursdays at 9:30 a.m. in Clubhouse II. We have cards and cribbage boards, and would be pleased to teach you the game. It is a mixture of rummy and pinochle and is pure fun. (We do not even keep score.) For more information, call George at (301-598-9747) or Bill at (301-598-7270). We look forward to seeing you.

**Duckpin Bowling:** Join us for the Duckpin Mixed Bowling League Mondays at 12:30 p.m. at White Oak Bowling Lanes

(11207 New Hampshire Ave., Silver Spring). We need bowlers of all skill levels and will welcome you into our enthusiastic group. We carpool regularly, so non-drivers need not stay away. Call Grace White at (301-438-7892) or Flora Wolf at (301-598-5807) to join as a substitute or regular bowler.

**Indoor Pool Volleyball:** Experienced players are welcome to join a competitive game in the social pool at Clubhouse II on Mondays and Thursdays at 6:45 p.m. Basic volleyball skills are required. For beginners, social games are Wednesdays, Fridays and Saturdays at 3 p.m. If you don't have a yearly indoor pool pass, a \$3 ticket good for one pool session may be purchased at the Clubhouse II E&R office. Email Laurie Burdick at (lgburdick@aol.com) with questions.

**Jigsaw Puzzle:** There is a jigsaw puzzle table in the Clubhouse II lobby. Feel free, at your leisure, to work on it.

**Pinochle Players:** If you enjoy pinochle, join us at Clubhouse II on Monday evenings, 6:30-8:30 p.m. Call us at (301-775-7238) or (301-598-7064).

**Poker:**

• A few poker game openings are available at the Greens, Thursdays 7-10 p.m. No prior experience necessary. If interested, call Marcel at (240-486-6205).

• **Men's Poker** is seeking new members. Play is daily, beginning around 9 a.m. in the Game Room in Clubhouse II.

**Scrabble:** Please join us at Clubhouse II on Tuesdays at 12:30 p.m. for a game of Scrabble. Boards are available. Call Arlyne at (301-438-7442) if you are interested in playing.



An engaged life is all about options. Whether your taste is contemporary or traditional, urban or eclectic, your home at Gardenside will be a reflection of your personal sense of style. Our wide range of floor plans offers the perfect space for you. Our one-, two- and three-bedroom selections feature open-concept floor plans with modern kitchens, generous closets, balconies, and large windows to welcome in natural light. With personalized customization available, your apartment will be the perfect place to call home.



701 King Farm Blvd. • Rockville, MD  
www.inglesidekingfarm.org

**Call 240-398-3846 while you can still take advantage of Charter Club benefits and availability!**

*Ingleside at King Farm is a CARF accredited, not-for-profit, continuing care retirement community.*

*Ingleside at King Farm is expanding with the proposed building of 121 new independent living apartments, 32 private assisted living memory support suites, and a Center for Healthy Living, subject to approval by the Maryland Department of Aging.*



**Leisure World News is available at [leisureworldmaryland.com](http://leisureworldmaryland.com)**

# CLASSES & Seminars

Sign-up will be taken for newly advertised classes beginning on the Tuesday after the date of the edition of Leisure World News in which it appears. All sign ups begin at 8:30 a.m. in either Clubhouse I or Clubhouse II as noted in the class description. Residents can register for themselves and two other residents. **Please bring your Leisure World ID.**

If required enrollment is not met five days prior to the start date, the class will be cancelled.

\*\*\***Please note fees for non-residents: add \$10 for 1-6 session classes and \$20 for classes of 7 or more sessions.**\*\*\*

Payment can be made by check or credit card (MasterCard, VISA or Discover); no cash is accepted. Checks *must* be made payable to Leisure World of Maryland Corp. Please sign up in advance of the starting date of the class since instructors need to know how many will participate. **Note: Registration will not be accepted nor refunds issued after the completion of two sessions!**

Leisure World does not discriminate on the basis of race, color, national or ethnic origin in admission policies, education policies or programs.

## EXERCISE

**NEW – Zumba Gold with Denny – Mondays or Fridays:** This program was designed for the older active adult, a person who has not been exercising in a long time or individuals who may be limited physically. The

biggest difference between Zumba Gold and Zumba Basic is that Zumba Gold is done at a much lower intensity. It is just as much fun, just not as fast! Zumba Gold utilizes the same great Latin styles of music and dance that are used in the Zumba basic program. Class meets

Mondays, Jan. 8-Feb. 12, 2018, 10:30 a.m. or Fridays, Jan. 12-Feb. 16, 1 p.m. **Fee: \$37.50 for one day; \$71 for two days. Register at Clubhouse II.**

### Pilates, Stretch and Barre Class with Juliet:

This one hour class starts with some simple standing stretches and then a gentle Pilates chair workout, some standing simple-chair-assisted ballet exercises and a relaxing cool down. In this class, you are not required to get up and down off the floor; just wear comfortable clothes and bring water with you. You will progress at your own speed as you strengthen and tighten your arms and legs, and improve your core muscles through breathing and movement.

Anyone can benefit from Pilates and from stretching, and in this class you get both. Pilates is linked to better balance in older women with back pain, but most of all it's

fun and will make you feel absolutely fabulous!

Class meets Wednesdays, Dec. 13-Jan. 24, 2018 (no class Dec. 27), 3-4 p.m. **Fee: \$72. Register at Clubhouse II.**

### Move to the Beat,

**Evenings:** This class is for those who do not like to exercise. But, as the doctors tell you, you have to keep moving. So grab a friend and let's have fun as we move by walking, stretching and dancing to music from the '40s on. (Singing along is allowed!)

All you have to do is follow Gerry as she leads you through your moves. Your moves are a little ballet, a little jazz, a little salsa, and more. Remember, your moves should always be done at a pace that is comfortable for you.

Sign up now for this fun, no pressure class. For more information, call Gerry at (301-438-7452). Class meets Tuesdays, Dec. 5-Jan. 9, 6:15-7 p.m. **Fee: \$39. Register at Clubhouse II.**

**FLOOR MAX**

DURACERAMIC now with SCOTCHGARD  
WILL NOT STAIN, WILL NOT FADE, WILL NOT WEAR OUT!

**10'X10' KITCHEN FLOOR**  
approx \$989 Installed \*

**MUST BRING THIS AD**  
to receive a **FREE** bottle of TECH STAIN REMOVER  
while supplies last

Carpet • Hardwood • Ceramic • Laminate • Vinyl • Bathroom Remodeling  
[www.floormax.us.com](http://www.floormax.us.com)

## The Flooring Professionals Since 1985

MHIC #41515

All Leisure World residents receive

**FREE**

in home estimates!

**Aspen Hill Shopping Center**  
(301) 460-4100

**\$250 OFF**

any PURCHASE of \$3,000 or more!  
HURRY Sale Ends SOON!

\*(Limited time only. Cannot be combined with other offers. Must be presented at time of purchase.)

# CALENDAR *of Events*

## Friday, December 1

### Clubhouse I

10:00 a.m. Drawing Clinic Art Class  
10:00 a.m. JRLW Seminar: Presidents as Leaders: From Carter to Trump  
12:15 p.m. Kiwanis Club  
1:30 p.m. Any Level Watercolor Art Class  
7:00 p.m. Friday Duplicate Bridge

### Clubhouse II

1:00 p.m. Ping Pong Club  
1:00 p.m. Chess Club  
1:00 p.m. Friday Bridge  
1:00 p.m. Zumba Gold Class  
6:00 p.m. Academy Music – Piano & Vocal Recital

## Saturday, December 2

### Clubhouse I

9:00 a.m. Gentle Yoga Class  
10:00 a.m. Open Art Studio  
10:00 a.m. American Needlepoint Guild Meeting

6:00 p.m. Holly Ball

### Clubhouse II

9:15 a.m. JRLW Services  
2:00 p.m. Going It Alone Club: Social  
5:00 p.m. Academy Music – Piano & Vocal Recital  
5:30 p.m. Baby Boomers Club

## Sunday, December 3

### Clubhouse I

Have a Wonderful Day

### Clubhouse II

2:30 p.m. Fireside Forum: Free Speech Under Attack  
6:00 p.m. Academy Music – Piano & Vocal Recital

## Monday, December 4

### Clubhouse I

9:15 a.m. Stretch & Tone Class  
9:45 a.m. AARP Driving Course  
10:30 a.m. Beginner Stretch & Tone Class  
1:00 p.m. Paintbrush & Knife Art Class  
1:00 p.m. CLL General Meeting  
1:30 p.m. Hadassah Judaic Study Group  
1:30 p.m. LW Chorale  
6:30 p.m. Newcomers Duplicate Bridge

### Clubhouse II

7:00 p.m. Bingo  
9:00 a.m. Senior Sneakers  
10:00 a.m. Clipper Workshop  
10:30 a.m. Zumba Gold Class  
11:00 a.m. Chair Yoga Class  
12:30 p.m. Men's Bridge

1:00 p.m. Chess Club Class

2:00 p.m. Chair Yoga Class

2:00 p.m. Line Dance Class

3:00 p.m. Line Dance Class

4:00 p.m. Ba Duan Class

## Tuesday, December 5

### Clubhouse I

9:00 a.m. Blood Pressure Testing  
9:30 a.m. Any Medium Art Class  
10:30 a.m. Ballroom Dance Club Annual Meeting  
10:00 a.m. En Avant! French in Action Class  
11:00 a.m. En Avant! French in Action Class  
1:00 p.m. Watercolor Techniques Art Class  
2:00 p.m. Poetry for Poetry Lovers and Avocational Poets Class  
5:30 p.m. Unitarian Universalists: Holiday Party

7:00 p.m. Duplicate Bridge

7:00 p.m. Trivia Group

### Clubhouse II

9:30 a.m. Beginner/Advanced Tai Chi Class

11:00 a.m. Water Exercise Class

11:00 a.m. Mild Exercise Class

12:30 p.m. Scrabble Group

1:00 p.m. Non-Impact Fusion Water Exercise Class

1:30 p.m. Comedy & Humor Club

6:15 p.m. Move to the Beat Class

## Wednesday, December 6

### Clubhouse I

9:00 a.m. Gentle Yoga Class  
10:00 a.m. Express Yourself Art Class  
10:00 a.m. MedStar Health Medical Center: New Providers Seminar

11:00 a.m. Short Story Group

12:30 a.m. NA'AMAT RBZ Club

1:00 p.m. Oils & Acrylics Class

2:00 p.m. Book Club Network – African Heritage

6:45 p.m. Chicago Bridge

### Clubhouse II

11:00 a.m. Mild Exercise Class

1:00 p.m. Chess Club

1:00 p.m. Ping Pong Club

1:00 p.m. Aqua Fit Class

2:00 p.m. Chair Yoga Class

4:00 p.m. LWAAAC: General Meeting

7:30 p.m. Fun & Fancy Theatre Group

## Thursday, December 7

### Clubhouse I

9:15 a.m. Stretch & Tone Class  
10:00 a.m. Painting for Everyone Class  
10:30 a.m. Exploring Ultra-Orthodox Judaism Class

10:30 a.m. Beginner Stretch & Tone Class

10:30 a.m. Essential Tremor Group

11:00 a.m. Writers Workshop

12:30 p.m. Ladies Bridge

1:00 p.m. Oils & Acrylics Class

3:00 p.m. Stamp Club

5:00 p.m. Lawn Bowls: Holiday Party

### Clubhouse II

9:00 a.m. Senior Sneakers Class

9:30 a.m. Beginner/Advanced Tai Chi Class

11:00 a.m. Water Exercise Class

12:30 p.m. Men's Bridge

1:00 p.m. Non-impact Fusion Water Exercise Class

1:00 p.m. Gilbert & Sullivan Society

## Friday, December 8

### Clubhouse I

10:00 a.m. Drawing Clinic Art Class  
10:00 a.m. St. John Episcopal School OASIS Holiday Concert

1:00 p.m. Mental Health Committee: "De-escalation: Dealing with Difficult People in Difficult Times"

1:30 p.m. Watercolor Any Level Art Class

6:00 p.m. Café AIM: Winter Solstice Party

7:00 p.m. Friday Duplicate Bridge

### Clubhouse II

10:00 a.m. Chinese Club

1:00 p.m. Ping Pong Club

1:00 p.m. Chess Club

1:00 p.m. Friday Bridge

1:00 p.m. Zumba Gold Class

5:00 p.m. Woodshop Users Group: Holiday Party

**Dial 301-598-1313  
for recorded Daily Events**

**Meetings of the LWCC Board of Directors,  
Executive Committee and Advisory Committees**

<b>Community Planning</b> Dec. 11, 9:30 a.m., Clubhouse I	<b>Landscape</b> Dec. 14, 9:30 a.m., Clubhouse II
<b>Emergency Preparedness Advisory Committee</b> Dec. 7, 9:30 a.m., Sullivan Room	<b>Security and Transportation</b> Dec. 14, 9:30 a.m., Clubhouse I
<b>Government Affairs</b> Dec. 11, 2:00 p.m., Clubhouse I	<b>Technology</b> Dec. 5, 10:00 a.m., Sullivan Room
<b>Insurance</b> Dec. 11, 2:30 p.m., Clubhouse I	
<b>LWCC Board of Directors</b> No meeting in December	
<b>LWCC Executive Committee</b> Dec. 11, 1:30 p.m., Sullivan Room	

*Meeting times and locations subject to change.*

**Leisure World Mutual Meetings**

<b>December 1</b> <b>Montgomery Mutual Board</b> 9:30 a.m., Clubhouse I <b>Mutual 17B Board</b> 10:00 a.m., Party Room <b>Mutual 24 Board</b> 1:30 p.m., Community Room	<b>December 12</b> <b>Mutual 19A Board</b> 9:30 a.m., Clubhouse II <b>Mutual 13 Board Rules</b> 1:00 p.m., Clubhouse I <b>Mutual 7 Board</b> 1:00 p.m., Sullivan Room <b>Mutual 25 Board</b> 7:00 p.m., Sullivan Room
<b>December 5</b> <b>Mutual 18 Board</b> 1:30 p.m., Sullivan Room <b>Mutual 6B Board</b> 2:00 p.m., Mutual	<b>December 13</b> <b>Mutual 11 Board</b> 9:30 a.m., Sullivan Room
<b>December 6</b> <b>Mutual 8 Board</b> 11:00 a.m., Sullivan Room	<b>December 14</b> <b>Mutual 15 Board</b> 9:30 a.m., Sullivan Room <b>Mutual 12 Board</b> 1:00 p.m., Sullivan Room
<b>December 7</b> <b>Mutual 10 Board</b> 9:30 a.m., Sullivan Room <b>Mutual 27 Board</b> 10:00 a.m., Community Room	<b>December 18</b> <b>Mutual 9 Board</b> 10:00 a.m., Sullivan Room

*Meeting times and locations subject to change.*

**Saturday, December 9**

<b>Clubhouse I</b> 9:00 a.m. Gentle Yoga Class 10:00 a.m. Open Art Studio 12:00 p.m. Lions Club Brunch	10:00 a.m. Garden & Environmental Club 10:30 a.m. Beginner Stretch & Tone Class 1:30 p.m. LW Chorale 7:00 p.m. Bingo
<b>Clubhouse II</b> 9:15 a.m. Shabbat Services 10:00 a.m. Model Railroad Club: Winter Open House 2:00 p.m. Going It Alone Club: Video/Bingo 7:00 p.m. Akhmedova Ballet Academy: "Nutcracker Night"	<b>Clubhouse II</b> 9:00 a.m. Senior Sneakers 10:30 a.m. Zumba Gold Class 11:00 a.m. Chair Yoga Class 12:30 p.m. Men's Bridge 1:00 p.m. Chess Club 2:00 p.m. Line Dance Class 3:00 p.m. Line Dance Class 4:00 p.m. Ba Duan Class

**Sunday, December 10**

<b>Clubhouse I</b> 10:15 a.m. Jewish War Vets	
<b>Clubhouse II</b> 2:00 p.m. Movie: "Manchester by the Sea"	

**Monday, December 11**

<b>Clubhouse I</b> 9:15 a.m. Stretch & Tone Class	
--	--

**Tuesday, December 12**

<b>Clubhouse I</b> 10:00 a.m. En Avant! French in Action Class 11:00 a.m. En Avant! French in Action Class 1:00 p.m. Amateur Radio Club	
--	--

5:00 p.m. Italian Club: Christmas Dinner  
 6:00 p.m. Camera Club: Holiday Party  
 7:00 p.m. Duplicate Bridge  
 7:00 p.m. Trivia Group  
**Clubhouse II**  
 9:30 a.m. Beginner/Advanced Tai Chi Class  
 11:00 a.m. Water Exercise Class  
 11:00 a.m. Mild Exercise Class  
 12:30 p.m. Scrabble Group  
 1:00 p.m. Non-Impact Fusion Water Exercise Class  
 1:30 p.m. Comedy & Humor Club  
 3:00 p.m. Parkinson's Support Group  
 6:15 p.m. Move to the Beat Class

**Wednesday, December 13**

**Clubhouse I**

9:00 a.m. Gentle Yoga Class  
 10:15 a.m. League of Women Voters  
 1:00 p.m. Diabetes Prevention Class  
 1:00 p.m. Low Vision Support Group  
 6:45 p.m. Chicago Bridge  
 7:00 p.m. Lapidary Club: Dinner

**Clubhouse II**

11:00 a.m. Mild Exercise Class  
 1:00 p.m. Chess Club  
 1:00 p.m. Ping Pong Club  
 1:00 p.m. Aqua Fit Class  
 1:30 p.m. Stroke Support Group: Annual Holiday Gathering  
 2:00 p.m. Chair Yoga Class

**Thursday, December 14**

**Clubhouse I**

9:15 a.m. Stretch & Tone Class  
 10:30 a.m. Exploring Ultra-Orthodox Judaism Class  
 10:30 a.m. Beginner Stretch & Tone Class  
 12:30 p.m. Ladies Bridge  
 7:00 p.m. Democratic Club: Tribute to Isiah Leggett

**Clubhouse II**

9:00 a.m. Senior Sneakers Class  
 9:30 a.m. Beginner/Advanced Tai Chi Class  
 9:30 a.m. Quilters Group  
 11:00 a.m. Water Exercise Class  
 12:30 p.m. Men's Bridge  
 1:00 p.m. Non-impact Fusion Water Exercise Class

**Friday, December 15**

**Clubhouse I**

10:00 a.m. Book Club Network – The Bookies and Diversity Strong  
 12:15 p.m. Kiwanis Club

6:00 p.m. Hispanos de LW: Christmas Dinner  
 7:00 p.m. Friday Duplicate Bridge  
**Clubhouse II**  
 1:00 p.m. Ping Pong Club  
 1:00 p.m. Chess Club  
 1:00 p.m. Friday Bridge  
 1:00 p.m. Zumba Gold Class

**Saturday, December 16**

**Clubhouse I**

9:00 a.m. Gentle Yoga Class  
 6:00 p.m. LWAAAC: Holiday Dinner Dance  
**Clubhouse II**  
 9:15 a.m. JRLW Services  
 1:00 p.m. AIM: POETEST Poetry Contest  
 2:00 p.m. Going It Alone Club: Video/Games  
 7:00 p.m. Sock Hop Group

**Sunday, December 17**

**Clubhouse I**

10:00 a.m. JRLW Breakfast

**Clubhouse II**

2:00 p.m. Olney Big Band Performance

**Monday, December 18**

**Clubhouse I**

9:15 a.m. Stretch & Tone Class  
 10:00 a.m. Woman's Club Vendor Sale  
 10:30 a.m. Beginner Stretch & Tone Class  
 1:30 p.m. LW Chorale  
 1:30 p.m. NARFE  
 6:00 p.m. Lions Club  
 7:00 p.m. Bingo

**Clubhouse II**

9:00 a.m. Senior Sneakers  
 10:00 a.m. Clipper Workshop  
 10:30 a.m. Zumba Gold Class  
 11:00 a.m. Chair Yoga Class  
 12:30 p.m. Men's Bridge  
 1:00 p.m. Chess Club Class  
 1:30 p.m. JRLW Movie: "Shalom Italia"  
 2:00 p.m. Line Dance Class  
 2:00 p.m. Chair Yoga Class  
 3:00 p.m. Line Dance Class  
 4:00 p.m. Ba Duan Class  
 7:00 p.m. Pianist Thomas Pandolfi

**Tuesday, December 19**

**Clubhouse I**

9:00 a.m. Blood Pressure Testing  
 10:00 a.m. En Avant! French in Action Class  
 11:00 a.m. En Avant! French in Action Class  
 1:30 p.m. Republican Club: Holiday Party  
 2:00 p.m. Book Club Network - Mystery

7:00 p.m. Duplicate Bridge  
 7:00 p.m. Trivia Group  
**Clubhouse II**  
 9:30 a.m. Beginner/Advanced Tai Chi Class  
 11:00 a.m. Water Exercise Class  
 11:00 a.m. Mild Exercise Class  
 12:30 p.m. Scrabble Group  
 1:00 p.m. Non-Impact Fusion Water Exercise Class  
 1:30 p.m. Comedy & Humor Club  
 6:15 p.m. Move to the Beat Class

**Wednesday, December 20**

**Clubhouse I**

9:00 a.m. Gentle Yoga Class  
 11:00 a.m. Library Guild  
 11:00 a.m. Short Story Group  
 6:45 p.m. Chicago Bridge

**Clubhouse II**

11:00 a.m. Mild Exercise Class  
 1:00 p.m. Chess Club  
 1:00 p.m. Ping Pong Club  
 1:00 p.m. Aqua Fit Class  
 2:00 p.m. Chair Yoga Class

**Thursday, December 21**

**Clubhouse I**

9:15 a.m. Stretch & Tone Class  
 10:30 a.m. Beginner Stretch & Tone Class  
 11:00 a.m. Writers Workshop  
 12:30 p.m. Ladies Bridge  
 2:00 p.m. Book Club Network  
**Clubhouse II**  
 9:00 a.m. Senior Sneakers Class  
 9:30 a.m. Beginner/Advanced Tai Chi Class  
 11:00 a.m. Water Exercise Class  
 12:30 p.m. Men's Bridge  
 1:00 p.m. Non-impact Fusion Water Exercise Class

**Friday, December 22**

**Clubhouse I**

7:00 p.m. Friday Duplicate Bridge  
**Clubhouse II**  
 10:00 a.m. Chinese Club  
 1:00 p.m. Ping Pong Club  
 1:00 p.m. Chess Club  
 1:00 p.m. Friday Bridge  
 1:00 p.m. Zumba Gold Class

**Saturday, December 23**

**Clubhouse I**

9:00 a.m. Gentle Yoga Class  
**Clubhouse II**  
 9:15 a.m. JRLW Services  
 2:00 p.m. Going It Alone Club: Bingo  
 6:00 p.m. Lions Club: Christmas Dance Party

**Sunday, December 24**

**Clubhouse I**

Have a Wonderful Day

**Clubhouse II**

Have a Wonderful Day

**Monday, December 25**

**Clubhouse I**

Have a Wonderful day

**Clubhouse II**

Have a Wonderful Day

**Tuesday, December 26**

**Clubhouse I**

7:00 p.m. Duplicate Bridge

7:00 p.m. Trivia Group

**Clubhouse II**

9:30 a.m. Beginner/Advanced Tai Chi Class  
 12:30 p.m. Scrabble Group

**Wednesday, December 27**

**Clubhouse I**

6:45 p.m. Chicago Bridge

**Clubhouse II**

1:00 p.m. Chess Club  
 1:00 p.m. Ping Pong Club

**Thursday, December 28**

**Clubhouse I**

9:15 a.m. Stretch & Tone Class  
 10:30 a.m. Beginner Stretch & Tone Class  
 12:30 p.m. Ladies Bridge  
 2:00 p.m. Memory Café

**Clubhouse II**

9:30 a.m. Beginner/Advanced Tai Chi Class  
 9:30 a.m. Quilters Group  
 12:30 p.m. Men's Bridge  
 1:00 p.m. Movie: "Rules Don't Apply"

**Friday, December 29**

**Clubhouse I**

Have a Wonderful day

**Clubhouse II**

1:00 p.m. Ping Pong Club  
 1:00 p.m. Chess Club  
 1:00 p.m. Friday Bridge

**Saturday, December 30**

**Clubhouse I**

Have a Wonderful day

**Clubhouse II**

9:15 a.m. JRLW Services  
 2:00 p.m. Going It Alone Club: Video/Games

**Sunday, December 31**

**Clubhouse I**

7:00 p.m. New Year's Eve Gala  
 10:30 p.m. NA'AMAT New Year's Eve Party

**Clubhouse II**

7:00 p.m. Sock Hop Group



*Providing Private Duty Nursing Care... generation to generation*



(301) 890-7575  
 3508 Greencastle Road  
 Burtonsville, MD 20866-1940

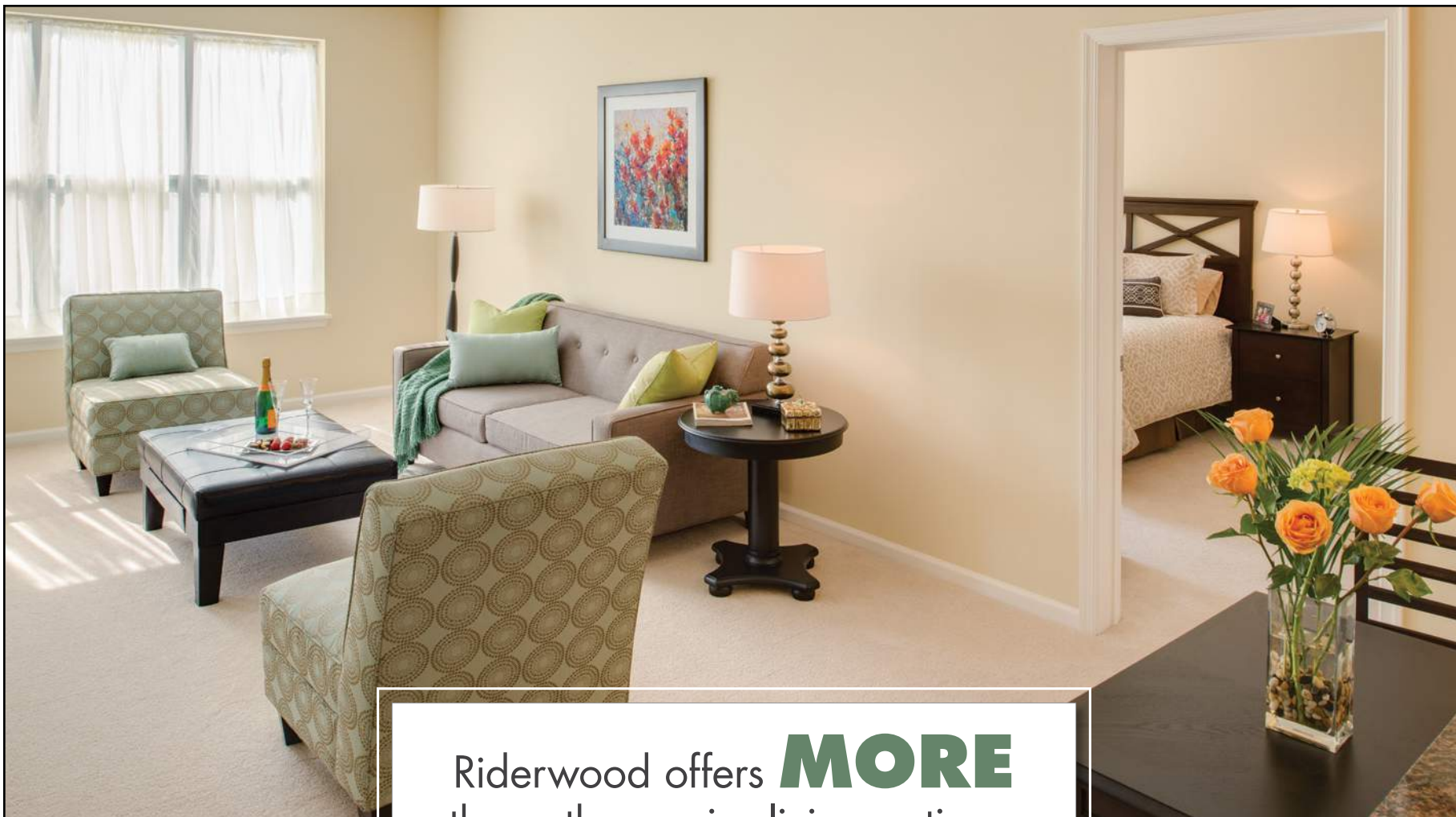
A1ActionNursingCare.com



**Free Blood Pressure Testing**

Come to Clubhouse I for free blood pressure testing, available on the first and third Tuesdays of the month from 9-11 a.m.





Riderwood offers **MORE** than other senior living options.

## Here are 3 REASONS we're Silver Spring's most popular choice for active retirement living:

### 1. You get **MORE** for your money

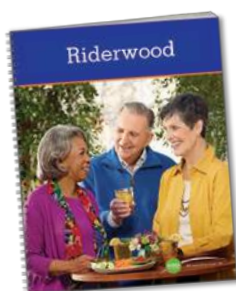
At a senior rental community, the money you pay is gone forever. At a life care community, you're forced to pay extra for care you may never use. But at Riderwood, 90% of your entrance fee is refundable.\* You only pay for advanced care if you need it.

### 2. You enjoy **MORE** amenities and services

Riderwood is your one-stop spot for resources and fun. The 120-acre campus includes abundant outdoor living space. Clubhouse amenities like restaurants, a fitness center and pool, and even a medical center are all just steps from your door.

### 3. You experience **MORE** peace of mind

You won't have to worry about fluctuating expenses because the Monthly Service Package covers almost all your regular bills, plus maintenance and repairs. Should you ever need it, more advanced care is available at the on-site continuing care health services neighborhood. Your finances and your future are secure!



## LEARN MORE!

Get more information about senior living at Riderwood. **Call 1-800-989-6177** for your **FREE** brochure or to schedule a personal tour.



# Riderwood

*Add more Living to your Life®*

Silver Spring

RiderwoodCommunity.com



\*Carefully read the Residence and Care Agreement for the conditions that must be satisfied before the Provider is required to pay the Entrance Fee Refund.

# CLASSIFIEDS

THE LEISURE WORLD of Maryland NEWS reserves the right to reject or discontinue any advertisement believed inimical to the best interest of Leisure World. We shall accept advertising on the same basis as other reputable publications: that is, we shall not knowingly permit a dishonest advertisement to appear in the Leisure World of Maryland News, but at the same time we will not undertake to guarantee the reliability of our advertisers.

## ESTATE SALES

**CASH FOR ESTATES;** whole apartment contents, whole house contents, storage lockers. Buy out/clean up. atticllc.com Gary – (301-520-0755).

**ATTIC TO BASEMENT ESTATE Cleanouts LLC** - I provide honest and confidential estate cleanouts with reasonable rates. I assist executors, family members and guardians with a personal touch. I will save you time and money providing fast and efficient service. I work with local auction and hauling companies. Please call or email me to set up an appointment Janet Ray (301-384-3198), (wishalot10@aol.com).

## REAL ESTATE FOR SALE

**A WISE CHOICE.** Call me. Marilyn Rubinstein of Weichert Realtors. Your expert in this great community. Top 1% Nationwide. #1 Office Producer with over 40 years of experience and hundreds of sales right here. Call me for a free market analysis. Please call and we'll talk. I make buying or selling an enjoyable and successful experience. Call Marilyn today (301-674-1288).

**THINKING OF SELLING** your home or that of a relative? Call Sue Heyman of Weichert Realtors, Leisure World Plaza, community resident for over 13 years, Top 1% Nationwide, Senior & Relo Specialist, "Forward@50 Sponsor." 2016 has been a super year for real estate! Inventory is historically low. Days on the market for our community are less than one month. Prices are going up! Mid-year, I have already had 18 closings, with four additional properties under contract. As sellers, now is the time to take advantage of this fast-paced market. I know all the floor plans and how to price them. Tap into my experience, contractor connections, and marketing to get the best price. My top-quality color brochures, multiple websites, staging techniques, and virtual tours display your home and our community at its best. Call for your free competitive market analysis, (ofc: 301-681-0550), (cell: 301-580-5556).

## APARTMENTS TO SHARE

**WANTED – ROOM TO RENT** in a LW apartment for one month—

renewable if all parties agree. I would like to get a better idea of living at LW before buying or renting long-term. I am impeccably neat, do not smoke, and am willing to help out as I can. I like to cook simple meals and never leave a dish for anyone else to wash. I can provide names of current LW residents, among others, as references and am happy to answer any questions. Please contact me at (ducahart@hotmail.com) or call (301-455-7023). Donaldo Hart.

## FOR SALE

**LW RESIDENT** needs to downsize fabulous antiques, art, large Henredon sofa: all very high-end treasures! Email us for full list & pix: (stracomsol@hushmail.com).

**GREAT CHRISTMAS GIFTS!** \$5-\$10. Worth more than twice the price! Much jewelry, china, leather handbags, glass, figurines, art, rugs, dolls. Name your price! Cash only. (301-598-1698).

## AUTO SALES

**2002 LEXUS ES300**, like new. One owner. Loaded with leather and sunroof. MD inspected. Only 50,500 miles. I will buy your car even if you don't buy mine. Dealing with Leisure World for 38 years. Licensed and bonded. Cash or cashier's check for your car, van or truck. Please call Marty Salins at Auto Plaza (301-325-1973).

**2006 MERCEDES BENZ CLK-500** convertible, dark blue. Like new. One owner. MD inspected. Serviced at Mercedes dealer. Only 73,000 miles. I will buy your car even if you don't buy mine. Dealing with Leisure World for 38 years. Licensed and bonded. Cash or cashier's check for your car, van or truck. Please call Marty Salins at Auto Plaza (301-325-1973).

## AUTO SERVICES

**ARE YOUR HEADLIGHTS YELLOW**, dull and hazy? Have you noticed your headlights aren't as bright as they used to be? Does your car look older than it is? Repair. Don't replace. Replacing headlight assemblies can be very costly and in most cases unnecessary. Call Mr. Headlight, (301-370-6983); we come to you. LW references available upon request.

## TRANSPORTATION SERVICES

**YOUR PERSONAL DRIVER IS HERE:** Lifelong local resident. Reliable, competent service. Comfortable, clean vehicle, can seat from 1 to 6 passengers. Airports, cruiseports,

theatres, casinos, appointments... Anywhere, anytime, including long distance trips to other states. Call with questions: Steven Saidman, cell/text (301-933-8899), email (Steve.Your.Driver@gmail.com).

**CALL & RIDE –** Doctors, airport, casino. Will pick up your groceries. Always on time. Over 50 satisfied customers from Leisure World. Larry Kraft (240-743-8287).

**NEED A RIDE?** I live in LW and can take you to the doctor, grocery store, occasional airport rides or shop for you. Just call and ask. References. Kathy Harris (301-598-1944).

## HEALTH CARE SERVICES

The Leisure World News will allow only those advertisers who show proof of certification to advertise that they are "certified nursing assistants."

**"A" HOME HEALTH CARE** for Senior Citizens – Care you can trust and is affordable. Reliable and qualified aide and nursing staff available. Companionship, personal care, meds, housekeeping, shopping, driving. Full/part-time or live-in. Flat rate for live-in care. Call (240-533-6599).

**ELDERLY CARE:** Over 10 years experience. Great reference. Available for long days or nights. Can drive. Leisure World resident. (240-461-2188).

**AIDE ASSIST & CARE** "Caring for Today for a Brighter Tomorrow." Licensed CNA, CMT, CPR/first aid, food handlers. Services: companionship, errands, dr. appts, cooking, cleaning and everyday care. No job is too big or too small. Please call for further details and pricing. (240-573-6184) E. Scott

**CAREGIVER WITH CNA** license and 8 years experience. Available to work daytime, nighttime and weekends, fulltime or part-time. Have own transportation. Call Aleka (240-715-8189).

**HOME HEALTH CARE/Caregiver:** Senior citizens, CNA. Work 10 years in LW. Grad, BSN (Filipina nurse). Roman Catholic. Culinary grad in Europe. Speak different languages. Schooling for nutrition. Work long/short term. Call Connie (240-449-6362).

**COMPASSIONATE, DEPENDABLE,** reliable CNA/GNA. 22 years of hands-on, skilled nursing care. Personal care, companionship (travel), cooking, light housekeeping, driving (own transportation). Good references. Call (240-426-4579). Available day/night, 24/7.

**CNA SEEKING** elderly care work. Own car. Loving, caring, 25 years experience. Good reference. Would like to work the night shift. Some hours at daytime as well. Call (301-357-3500).

**CNA, GNA, MEDICINE AIDE.** Elderly care. Over 10 years experience. Certified CPR, first aid. Reliable, responsible, loving, caring, respectful. Great references. Good driving record; can drive you to shopping. Daily activities, light cleaning and laundry. Available day and night. (240-640-0709)

**CNA CAREGIVER.** Caring hands, loving and companionship. 25 years experience. Available live-in Monday-Friday, or long days or nights. Have excellent reference. Please call Tegest (301-237-5156).

**20 YEARS EXPERIENCE –** developmentally disabled/adult home health care. CMT, nursing assistant, CPR/first aid certified, BPS. Clean driving record. References available upon request. Alma (240-355-5707).

**MY PARENTS' CAREGIVERS** are available for work. Two loving, caring ladies. Very reliable, honest and hardworking. Doctor's appointments, personal hygiene, grocery shopping, meals, medication, etc., they do it all. You don't have to worry any more. If you need help, call (301-448-2939).

**CERTIFIED NURSING ASSISTANT,** competent and compassionate with 12 years experience. Great references and drives. Cell phone (240-393-1625).

**CNA, CPR, FIRST AID.** 5 years experience working in private duty and in an assisted living facility. I enjoy being a caregiver. Call Jeniffer (202-386-0110).

**CERTIFIED NURSING ASSISTANT** for in-home care. Certified in CPR and First Aid. Dependable and hard working with 6 years experience. Worked with Alzheimer's and Parkinson's patients. Live locally, native English-speaking female with own transportation. Flexible hours and reference available. Please call Ryan Stoddard (240-876-0263), email (ryanstoddardcna@gmail.com).

**CNA/CMT – OVER 16** years of experience. Very dependable. Excellent references in LW. Have car. Light cooking, doctor's appts., errands. Bonded, insured. Hospice patients are welcome. Call Ana (240-491-8978, 301-442-6094).

**D. CAROL'S SERVICES:** Store, doctor visits, closet organization, overnights, medication reminders, laundry, meal prep, personal hygiene, run errands, physical

therapy. (301-593-0521) Excellent references.

### GENERAL SERVICES

**ALTERATIONS** - 30 years experience in Leisure World! Men's & woman's garments picked up and dropped off at your convenience. Very competitive prices. Call Mimi (301-990-6468).

**INTERIOR DESIGN.** Complete design services including reconfiguring your (or purchasing new) furniture and accessories, lighting, flooring and designing kitchens/bathrooms. Leisure World resident; references available. Roy Moskowitz (301-219-6255).

**KITCHEN AND BATHROOM Remodeling** - Cabinet and countertop replacement, and bathtub to accessible shower conversions. Please call Joe at JML Remodeling. (301-598-8400). Serving Leisure World since 1988. MHIC# 36674. Thank you.

**"STAIR LIFTS:** Never walk up steps again! Buy new or certified pre-owned stair lifts at reduced prices. Installation, lifetime warranty and free service contract included. Call (301-448-5254).

**CONTINENTAL MOVERS.** Local moving services. Free boxes. Local - long distance - hauling - pick-ups and deliveries. \$80 x two men, one hour driving time. (202-438-1489)

(301-340-0602) (Cmora53607@msn.com) (www.continentalmovers.net).

**TIRED OF POLISHING** your silver? Turn it into cash, which does not tarnish. I will come to your home and give you a free evaluation of what I can pay. I buy all gold and silver jewelry, including broken pieces, all sterling silver, gold and silver coins, gold watches, etc. I am licensed with both Maryland and Montgomery County (lic. #2327). If you decide to sell, I can buy your items at that time, but there is no obligation. Call Bob, Gold 4 Good, 8241 Georgia Ave., Ste. 100, Silver Spring, MD 20910 (240-938-9694).

**DAHLSTROM SENIOR SUPPORT SERVICES.** Assistance with Senior Care and the Care of Senior's Pets. Safe/Reliable door-to-door transportation as needed. General assistance to help maintain independence. Assistance with Pet Care. Dog walking and sitting during short hospital stays, vacations, or as needed. Transportation for grooming/vet appointments. I am a 55-yr. old semi-retired Doctor, Leisure World Resident and dog, cat, bird lover. Bonded, insured, reasonable rates and outstanding Leisure World references. Call Carl (410-499-9362).

### CLEANING SERVICES

**R&G CLEANING SERVICES** - Small, family-owned business

catering to you and your household needs. Friendly, reliable and trustworthy with many years of experience. Reasonable rates and flexible hours. Licensed and insured. Help with household organization. Free estimate with appointment. Call (301-442-5032).

**ALICIA'S CLEANING SERVICES** - Good references. Good rate. Once a week or every two weeks. (240-286-3807)

**HOUSECLEANING** - Sara (240-477-2104) will thoroughly clean your home for a fair price; all supplies included. I am one of Sara's satisfied customers. Call Jackie for references (301-598-3711).

**HOUSE CLEANING** - 22 years experience. Worked in LW for 10 years. Reliable, honest, great references. I live in Aspen Hill. Call Alice (301-946-5996) or (301-520-0074).

**HOUSE CLEANING AND ADDITIONAL SERVICES:** Kind and honest; good references from Leisure World residents, experienced, great work. I clean bathrooms, kitchens, dust, mop and vacuum rooms, offices, den, deck - condos or apartments. I also provide additional services as you might need. (240-476-2574) Ivone.

**HOUSE CLEANING BY JOY:** Weekly, bi-weekly, monthly, one time move in/move out.

Reliable. Reasonable rates. Quality work serving area over 10 years. (240-393-9863)

**CARE DRY CARPET CLEANING.** Experience the difference. Host dry extraction system. Green, clean & dry in 30 minutes. Water damages wood flooring under your carpet. Choose dry cleaning. Call Mike Gonsalves, owner/operator (301-309-9398).

### COMPUTER HELP

**COMPUTER SERVICES** - Problems with your PC or Network? Computer Systems Engineer will come to you with help. Home, Business. Call David G. (301-642-4526).

**A+ COMPUTER SERVICES.** Free in-house diagnostic of your computer, printer, or basic set-ups. A+ certified, virus removal, back up, and retrieve important data, photos, and music. Have served over 400 clients in Leisure World. Also will teach lessons on Microsoft Office and basic computer skills at your home. Alex Nowrouzi, (301-312-2277). I reside in Leisure World.

**COMPUTER LESSONS / SERVICES** - Need help with your computer? Training, new computer setup, troubleshooting, installation. Lessons at your residence at your convenience. Learn basic computer, email, surfing the web, digital photos, tablets,



## The Most Exciting New Senior Living Community Has Arrived in Rockville

Brightview West End is bringing *resort-style, maintenance-free living* to Montgomery County seniors with *no large entrance fee*. Convenient to *shopping, dining, and entertainment*, Brightview West End is located in the heart of Rockville Town Square.

Ask about our *exclusive* Gallery program, including *full concierge service*.

**Reserve your apartment in 2017 to enjoy exceptional savings.**

**Call Wendy or Jayna.**

**301.284.7214**

**www.BrightviewWestEnd.com**



**BRIGHTVIEW**  
SENIOR LIVING

**WEST END**

285 North Washington Street • Rockville, MD 20850



Independent Living • The Gallery • Assisted Living • Dementia Care • Enhanced Care



smartphones, smart TVs, and more. Patient trainer will sit by your side and teach you in plain English - no technical talk! Shopping assistance for all electronic & computer items. Senior specialist since 1996. Senior discount. Call David at (301-762-2570). ComputerTutor

### PERSONAL SERVICES

**PRESERVE YOUR FAMILY MEMORIES!** Don't let your precious photos be forgotten or fade over time. I'll transfer your photos, slides, and mementos to a CD so they can be easily shared with friends and family. Once they're scanned, I can label the photos to identify the people in them, or bring your photos to life in a memorable DVD slideshow. Call Kim at Virtual Computer Services (301-438-3140).

**NOTARY**, residing in Leisure World. I offer my service free of charge to Leisure World residents. Can come to your home if needed. (301-379-9694).

**FELLOW LEISURE WORLD** resident available for companion

(local and travel); transportation: errands, church, social and medical appts.; friendly visitor. Excellent references. Call Kathleen at (202-758-9208).

**PAT'S SENIOR SERVICES** – (Leisure World resident) companion/aide, driver, errand runner, housekeeper and offering nutritious juicing and meals. Could lead to fulltime in the future. Call Pat (301-598-1496) or (240-475-5288)

**THE GENTLE YOGI**, Cheryl Kravitz, RYT200. Contact me about classes at local studios or private lessons. Yoga for Stiff Bodies, Yoga for Caregivers or people with dementia. (301-580-8905) or (crkyoga@gmail.com).

**PROFESSIONAL SEWING LESSONS** now available in your home by LW resident. Studied with Master Seamstress, Dr. Knew. Hourly fee. Email your interest to: (stracomsol@hushmail.com).

### PET CARE

**DOG WALKING**, cat sitting, birds. Daily drop-ins or vacations,

overnights by mature animal lover with 10 years experience. Medication or insulin as needed. Call Eileen (301-442-3989).

**K-9 CARE!** Rachel Kravitz (daughter of Cantor Michael Kravitz) will walk your dog. References provided. Call (301-456-6235) or e-mail (crk725@aol.com).

### HELP WANTED

**INTAKE/ASSESSMENT COORDINATOR:** Silver Spring-based senior home care agency looking for part-time Intake/Assessment Coordinator. Meet with seniors and their families to describe our services, conduct non-medical assessments, and determine how we can best help them. Phenomenal cohesive office team. Experience preferred: Aging background, excellent written and interpersonal skills; must be computer literate. Must have own car. Work 2 days per week/8:30am-5pm. HomeInstead.com/197. Please send resume and salary requirements to patty.mascari@homeinstead.com. **NO PHONES CALLS PLEASE.**

### VOLUNTEER OPPORTUNITIES

**MAKE A DIFFERENCE** in a family's life. Habitat for Humanity ReStore needs volunteers to work in its ReStore. Volunteers are a vital part of our organization and we need you to be a part of our team. We especially need daytime volunteers who can take a regular shift of 3-4 hours. Shifts typically are 9 a.m.-1 p.m., 1-5 p.m., or 3-6 p.m. ReStore has two locations – Rockville and Silver Spring. E-mail alena.biagas@habitatmm.org or call (301-990-0014 x 16) to get started. Volunteers can start after watching a short video and filling out an application.

**VOLUNTEER AS A HOTLINE CALL COUNSELOR** with the Montgomery County Hotline! The Montgomery County Hotline is a 24-hour, 7 day a week confidential service. Counselors provide supportive and confidential listening; crisis prevention and intervention; and give information, referrals and resources. Training Course starts March 11. Contact (volunteer@mhamc.org) or (301-424-0656, ext. 541) if interested.

**KOSHER MEALS ON WHEELS**, sponsored by JSSA, needs volunteers to deliver nutritious meals to homebound seniors. Volunteers will pick meals up at the Hebrew Home in Rockville and deliver them to seniors in Montgomery County. Schedule is flexible. Call Diane Hays-Earp at JSSA, (301-816-2639).

**THE SENIOR CONNECTION** needs volunteers who live in the 20906 zip code area to drive seniors to medical appointments and help with grocery shopping. Schedules are flexible and just 2-3 hours a month can make a difference! Training and liability coverage are provided. Call (301-942-1049) or contact (volunteer@seniorconnectionmc.org) to learn more.

**HELP A CHILD!** In just 1-2 hours a week you can make a difference in a child's life. Volunteers provide friendship and encouragement, help with reading, offer homework assistance, and engage in crafts and cultural activities at schools



**SERENITY**  
Gardens assisted living

**It's Personal!**  
The most caring assisted living home with a 24x7 care that is so personal, you feel right at home.

10829 Burbank Drive, Potomac, Maryland 20854  
10501 Bit and Spur Lane Potomac, Maryland 20854 | 18106 Cashell Rd, Rockville, MD 20853

Phone: 301-200-9275 | Fax: 800-521-9231 | www.serenitygardensliving.com | info@serenitygardensliving.com

**Family Owned and Operated**

**Serving LW For Over 30 Years**



**\$150 OFF**  
a pair of  
prescription glasses

13808 Georgia Ave.  
1 mile south of LW.

**eyeland** 301-871-6454

**JOEL'S  
EXECUTIVE  
CAR SERVICE**

301-438-9777  
301-980-4734 (cell)

- Airport
- Trains
- Doctor Visits



**Get the Royal Treatment**  
Available 24 hours.

near Leisure World. For more information, contact Interages at (301-949-3551) or (interages@AccessJCA.org).

**NOTICES**

**KEEPING SENIORS SAFE - KSS.** Morton A. Davis, coordinator and resident of Leisure World is available to discuss theft prevention, driving and shopping habits, frauds, home safety inspection and property crimes to any organization. The program is part of the Montgomery County Police Department Volunteer Resource Section. Morton can be reached at (301-318-0681) or (mortonadavis@comcast.net).

**PRAYER CHANGES THINGS.** You are invited to join "Hannah's Prayer Circle" here at LW. For more information, call Evangelist Connie Blake at (301-438-2667).

**ARE YOU INTERESTED** in antiques and collectibles? Join a small group who study and also explore historic landmarks. For more information, call (301-598-0158).

**ATTENTION ALL WIDOWS:** Want to join other widows in the Fun Bunch, who want to go out and have fun at movies, theatre, concerts and other activities? If you are interested in meeting new friends and enjoying life with other women in similar circumstances, all LW resident Marlene Golden at (301-438-7773).

**WANTED**

**PLEASE BE MY MIRACLE.** I need a car. I'm unable to work because of severe health issues and need a reliable, dependable car. Praying for generous person to donate vehicle. Abbey (301-501-1221) or (abbey@slectivehouse.com).

**FAST CASH FOR USED CARS -** Big dollars paid for your used car! Over 43 years experience serving Leisure World. Leave message 24 hours. I will come to you. Cash or cashiers' check at your request. I can also help with your new car purchase, any make or model! Md. Dealer #U2927. Call Marty Salins (301-325-1973).

**WILL BUY MILITARY, WW2, WW1, Civil War, memorabilia items.** Uniforms, Weapons, Helmets, Photos, Medals, or any other items associated with US, German, Japanese or other military history. Call Dave (240-464-0958) or email (obal7@aol.com)

**CASH FOR RUGS:** oriental rugs, any condition. European, Asian, Navajo, etc. atticllc.com Gary (301-520-0755)

**HOUSING UNLIMITED, INC** is a non-profit organization that provides housing for people in mental health recovery. We accept furniture and housewares that are in good condition to furnish our homes. We do pick up. The Housing

Unlimited office is (301-592-9314). Thank you.

**CASH FOR JEWELRY:** gold, silver, costume, diamonds, coins (including foreign), watches, stamp collections. atticllc.com Gary (301-520-0755).

**TURN YOUR STERLING SILVER** and old gold jewelry into cash and do something good for yourself. Gold 4 Good (8241 Georgia Ave., Ste. 100, Silver Spring, MD 20910) buys gold and silver jewelry, including broken pieces, all sterling silver, gold watches and gold and silver coins. I will come to your house and give you a free evaluation of what I can pay. If you decide to sell, I can buy your items at that time, but there is no obligation. Licensed with both

Maryland and Montgomery County (lic. #2327). Call Bob (240-938-9694).


**BUYING ANTIQUES,** jewelry; cash paid. Also gold, silver, watches, coins, pens, Asian antiques, original art, firearms, old toys, golf. Please call Tom, Silver Spring resident, at (240-476-3441).

**WE BUY VINTAGE:** Turn your old into gold! Something in the basement gathering dust? Give us a call; you might be surprised! Phone quotes and home visits when possible. Specializing in vintage Hi-Fi equipment (amplifiers, turntables, speakers, etc.). Over 50 years paying top dollar in your community. (301-881-1327) Please leave a message.

**LW TOP OFFICE PRODUCER**  
LEISURE WORLD PLAZA  
**MAYNARD E. TUROW**  
AGENT 18 YEARS...LISTINGS, RESALES, NEW SALES

**THINKING OF SELLING?? Or Friends-Relatives Buying??**

Living in and working in this community, I give you the attention to detail your property needs to sell successfully. I know the marketplace and can bring you excellent results.



**LONG & FOSTER REAL ESTATE, INC.**  
(O) 301-598-7500

**FREE BROCHURES, COMPS, LAYOUTS, INFO**  
Direct: 301-518-3834  
maynardturow@yahoo.com  
Website: MaynardTurow.LNF.com

**Mark C. Wimsatt**  
**Painting**  
Interior/Exterior



**Leisure World References**  
• Affordable Quality  
• Excellent References • Free Estimates

**WINTER DISCOUNTS!**  
**301-828-6500**

Serving Leisure World for over 30 years.  
MHIC 10165 Bonded/Insured

# We Provide Compassionate Urology Care for the Residents of Leisure World.

*Chesapeake Urology is conveniently located at 3801 International Drive in Silver Spring, just around the corner from Leisure World.*



**Richard A. Kurnot, M.D.**  
General Urology for Men and Women



**Bernard J. Rogus, M.D.**  
General Urology for Men and Women



**Cheryl Shih, M.D.**  
General Urology for Men and Women: English, Mandarin Chinese, Spanish



**Anup A. Vora, M.D.**  
General Urology for Men and Women: English, Hindi, Gujarati, Spanish

## Chesapeake UROLOGY

*The most personal care for life's most personal issues.*

**301-598-9717 chesapeakeurology.com**

Prostate, Bladder and Kidney Cancers and Conditions • Kidney Stones • Erectile Dysfunction • Urinary Tract Infections • Pelvic Pain • Bladder Control Conditions • Enlarged Prostate  
Female Urinary Incontinence • Pelvic Organ Prolapse • IC/Painful Bladder • Pelvic Pain

# EVERY DAY'S A HOLIDAY AT ASPENWOOD SENIOR LIVING!

LIFE IS AN ADVENTURE AND AGE IS JUST A NUMBER.

## ASPENWOOD SENIOR LIVING COMMUNITY

14400 Homecrest Road • Silver Spring, MD 20906

**301-598-6424**

### OUR FIVE STAR LIFESTYLE MAKES EVERY DAY EXCEPTIONAL.

- Five Star Dining Experience
- Lifestyle360 program, making every day fulfilling
- Convenient monthly rental community with no buy-in

**Call us today to reserve your personal visit.  
Life here will be the gift of a lifetime.**



**CALL TODAY TO CELEBRATE THE EXCEPTIONAL LIFE WITH US.**



[www.AspenwoodSeniorLiving.com](http://www.AspenwoodSeniorLiving.com)  
INDEPENDENT LIVING • AREA'S ONLY INDEPENDENCE PLUS • ASSISTED LIVING

©2017 Five Star Senior Living





▲ Continuing Care Retirement Community located in Montgomery County, serving Seniors and their families for 25 years!  
Independent Living \* Independent Living with Services  
Assisted Living \* Nursing & Rehabilitation Care

***From our family to yours..***  
***Bedford Court wishes you a very***  
***happy and safe holiday season!***  
***Independent Living apartments available.***  
***Move in by December 31st and we will pay***  
***\$1,500 towards moving costs.***  
***Assisted Living—Limited availability***  
***Call today to schedule a tour***  
***301-598-2900***

***Come For Lunch - Two can dine for the price of one!***

***The Bedford Court Dining Room welcomes Leisure World Residents for lunch, Monday—Friday 12pm—2pm.***  
***Call a friend and join us for a delicious lunch! Bring this ad with you to redeem. Cash Accepted.***



... ❄️ ...

# TIS THE SEASON FOR

## *Warmth & Cheer*

Assisted Living at  
Brooke Grove offers  
comforts that feel like home  
along with a vibrant lifestyle  
that encourages residents  
to remain physically and  
socially active throughout  
the cold winter months.

### OUR AMENITIES

- ❄️ Private rooms filled with natural light from over-sized windows and skylights
- ❄️ Live-in pets
- ❄️ Secure courtyards and walking paths
- ❄️ 24-hour on-site clinical support from licensed and caring nurses
- ❄️ Warm, friendly staff members to assist with the activities of daily life

### MEMORY SUPPORT PROGRAM

For residents with Alzheimer's or dementia, we offer a special assisted living option with:

- ❄️ Specially trained memory support staff
- ❄️ An interactive lifestyle that maximizes choice and independence
- ❄️ Tailored LIFE enrichment programming that connects each resident to his or her past
- ❄️ Pianos, fireplaces, and game and craft rooms promote invaluable social experiences that stimulate memory

  
**BROOKE GROVE**  
RETIREMENT VILLAGE

18100 Slade School Road  
Sandy Spring, MD 20860  
301-260-2320 or 301-924-2811

[www.bgf.org](http://www.bgf.org)

