

# Newly Elected Board Chair Adjusts to Expanded Role

by Stacy Smith, Leisure World News

With his quiet persistence and unassuming demeanor, it might be easy to miss Paul Eisenhour as he wheels past neighbors to attend this or that meeting. But the resident of seven and a half years who says he never thought he'd be involved in community governance was recently elected chair of the Leisure World Community Corporation (LWCC) board of directors, a position not wholly coveted. "I'm already having to settle complaints," he said, with a smile. As board chair, Eisenhour is responsible for leading meetings while understanding

both the minutiae and larger picture of life at Leisure World. "In advisory committees, they're pretty focused on some issue. But with the board, you have to know everything that's going on. You have to concentrate on meaning and direction." Direction is taken once the board votes on a motion, a responsibility that Eisenhour relinquishes as chair. "I'm no more powerful than anyone on the board," he said. "In fact, I'm not even going to be voting, unless there's a tie." Eisenhour hopped onto the community governance train about six months into his residency when a neighbor

► to page 4



Newly elected LWCC board of directors chairman Paul Eisenhour shows off his playful side at the 2017 4th of July Parade. Courtesy Photo



Sgt. Kenneth Sanger, Montgomery County Police Special Victims Investigations Division, discusses state laws regarding sex offenses at the Community Safety Forum in the Clubhouse II auditorium Jan. 11. Photo by Stacy Smith, Leisure World News

# Community Forum Addresses Safety Concerns

by Stacy Smith, Leisure World News

A Community Safety Forum was held Jan. 11 in the Clubhouse II auditorium to respond to concerns and questions that emerged after the mid-December arrest of a resident who is a registered sex offender. Approximately 80 people attended the Forum, during which five panelists lent their expertise on topics ranging from suggestions about general safety precautions to sexual assault and the Maryland Sex Offender Registry. "If you think that something is not right; if you suspect; if it just doesn't look quite right, go ahead and call us," said Capt. Marc Yamada, Montgomery County Police Commander for

the 4th District. The other four panelists included Lt. Sheila Sugrue, acting director of the Montgomery County Police Special Victims Investigations Division; Sgt. Kenneth Sanger, Montgomery County Police Special Victims Investigations Division; Claire Kelleher-Smith, senior staff attorney at the Maryland Coalition Against Sexual Assault; and Debbie Feinstein, Chief of the Special Victims Division for the State's Attorney's Office. After brief remarks, the panelists addressed attendees' questions. Sanger clarified that the actual number of residents who are registered sex offenders is five, not 26, as one

► to page 5

INSIDE	Governance & Information ....	6	Sports, Games & Scoreboards .....	34
	Thoughts & Opinions.....	8	Classes & Seminars .....	38
	Events & Entertainment.....	10	Calendar of Events .....	41
	Movie Schedule .....	11	Governance Meeting Schedules.....	41
	Health & Fitness .....	14	Classifieds.....	44
	Clubs, Groups & Organizations .....	16		
	Club Trips Listing.....	32		

For the LWCC board of directors' election results, see page 7.



## Spotlight On...

# Indoor Pool Volleyball

by Maureen Freeman,  
Leisure World News

With the winter cold and late afternoon darkness comfortably at bay outside the windows surrounding the indoor pools in Clubhouse II, the social pool comes alive with splashes and cheers filling the bright enclosure.

That's when competitive indoor pool volleyball games take place, drawing up to 20 or more residents who don their swimsuits or swimming trunks, hop in the water, and spend up to 90 minutes smacking and spiking a plastic ball across the water.

Under a net slung across the pool several feet above the water surface and within floating ropes marking playing area boundaries in the asymmetrical pool, players randomly assort themselves into teams. Latecomers joining the game after work easily slip into one side or the other's rotation of players.

Like tennis, ping pong or badminton, volleyball play begins with a serve and continues until one team fails to send the ball back over the net, or sends it out of bounds. Between the serve and earning a point, teams can hit the ball as many times as they need to on their own side before sending it

soaring back over the net.

And the small, lightweight ball can seem to have a life of its own as players leap and lunge to keep it in play. Heads swivel in unison, hands remain lifted and outstretched, and all eyes track the ball's every ricochet between palms and fingertips, every arc through the air.

Some players perch in the water up to their shoulders, eyeing the ball, then shoot up to smack the ball when it hurls their way.

Concentration is intense, especially the longer a volley continues. Cheers and groans erupt when the ball makes final splashdown, either just out of bounds, or just beyond a player's outstretched fingertips.

At a recent game, Gulshon Segal twice landed unanswered shots after lengthy volleys, and her teammates surrounded her with whoops, grins and high fives.

While they do call themselves competitive volleyball – social, beginner volleyball games also take place three days a week – fun seems to take precedence. “What's the score?” one player asked a teammate during the game. The answer, “14 to four,” prompted a look of surprise. Not all, apparently, keep close track of who's ahead and by how much.

Nevertheless, a competi-



Competitive indoor pool volleyball players face off in the Clubhouse II social pool on Mondays, Thursdays and Saturdays. Volleyball games for beginners are held Wednesdays, Fridays and Sundays. Photos by Leisure World News

tive streak isn't far below the surface. When the regular rotation of players' positions brought Pam Mulcahy and Stan Blorstad facing each other in the front row on opposite sides

of the net, Mulcahy addressed him with a smile and an exaggerated sinister tone: “Heh-heh, we meet again.” Then, hands poised in the air, they awaited the smack of the serve.

**ASPEN HILL  
EXXON**  
**301-871-6777**



**Auto Care**

**www.aspenhillexxon.com**  
**14011 Georgia Ave.**

Owned and Operated by BENNY Since 1980 "or ask for my son DAN."  
Friendly, personal and professional service!

**Free transportation home and back when you leave your car for service!**

• Complete Automotive Maintenance Service & Repair • Most Makes & Models  
• Two Years/24 Month Warranty • Factory Scheduled Maintenance

### Auto Service Discounts

**Oil Change Service Special - \$29.95**

**5 Qts of synthetic blend 5W/30 oil**

**Oil Filter & Lube ♦ Multi-Point Inspection**

**Most cars, plus tax & disposal fee**

**Full Synthetic Extra**

**Present this Coupon with Incoming Order. Expires January 31, 2018**

**Maryland State Inspection Station**

## Leisure World News OF MARYLAND

An official publication of the Leisure World Community Corporation, Leisure World News is published twice monthly by Leisure World Staff in collaboration with the Communications Advisory Committee.

Leisure World News is published for the benefit of Leisure World residents. Its mission is to provide news and information about community governance and other relevant issues, events, and activities, and to provide residents a forum for their opinions and an opportunity to contribute articles of general interest. All matters concerning the Leisure World News will be decided with this mission in mind.

#### Leisure World Staff

Maureen Freeman,

*Director of Communications*

Stacy Smith, *Senior Editor*

Kathleen Brooks, *Publication Associate*

Cassandra Chisholm, *Graphic Designer*

**Editorial:** lwnews@lwmc.com

**Advertising:** lwnewsads@lwmc.com

301-598-1310

#### Communications Advisory Committee

Arthur N. Popper, *Chair*

Bernie Ascher, *Vice Chair*

aclwn@lwmc.com

#### Resident Contributors

Barbara Braswell, Rincy Pollack

and Alan Goldstein

Leisure World News of Maryland reserves the right to reject or discontinue any advertisement believed to be not in the best interest of Leisure World. We will not knowingly permit a dishonest advertisement to appear nor do we guarantee the reliability of advertisers.



## Jan. 29: Sweater Drive for Interfaith Works

by Bonnie Bonner

The Missions Committee sponsors a sweater drive for clean, gently used sweaters for men, women and children on Monday, Jan. 29, from 10 a.m.-2 p.m. at The Inter-Faith Chapel.

Residents may drive under the portico at the Chapel to drop off sweaters on this day and time only.

All sweaters will be donated to Interfaith Works to help local residents in need.

Interfaith Works, founded in 1972, is a 501(c)(3) nonprofit agency and a non-sectarian interfaith coalition of more than 165 affiliated congregations of diverse faiths, working

together to meet the needs of the poor and homeless in Montgomery County.

Each year, Interfaith Works impacts more than 16,000 lives.

Montgomery County is often considered an affluent community; however, more than six percent of Montgomery County residents live below the federal poverty level, according to the U.S. Census Bureau.

More than one-third of public school students in the county receive free and reduced price meals, according to ([www.montgomeryschoolsmd.org](http://www.montgomeryschoolsmd.org)).

The need of many families is great, so please consider contributing sweaters.

## Lions Partner with Social Services to Serve Community



Left to right: social workers Susan Hart, Susan Montgomery, Wilma Braun, and Lions Club president Arthur Hooker. Photo by Reva Williams

The Lions Club has partnered with Leisure World's Social Services Department to help meet the community needs by providing food and donating monetary gifts and gift cards to needy residents.

Anyone interested in making donations to the Social Services Department or the Lions Club is encouraged to contact Club president Arthur Hooker at (301-598-0242) or ([coacharthur1962@yahoo.com](mailto:coacharthur1962@yahoo.com)).

— Maxine Hooker



## Fitness Center Orientation Tours Extended

The Fitness Center's free orientation tours have been extended through February. Kaye Haynes, the Center's personal trainer, offers free tours every Tuesday through Feb. 27. Registration is not required. For more information, call Haynes at (804-627-1582).

— Leisure World News

## Schedule of Fees Updated

The Schedule of Fees listed on page 6 of the Jan. 5 edition of Leisure World News has been updated:

- As of Jan. 1, 2018, prescription delivery has been reduced from \$4 per prescription to \$2 per prescription (per person in a household). To schedule a delivery, call MedStar Pharmacy at (301-598-1005). The Security and Transportation Department only delivers prescriptions within Leisure World.
- The Clubhouse II multi-purpose room and meeting rooms are no longer rented out to residents.

—Leisure World News

### CORRECTION

The Jan. 2 edition of Leisure World News misidentified the date of a Center for Lifelong Learning course as Wednesday, Jan. 24. It is Monday, Jan. 29. See page 4 for more information about the course.

## Where in Leisure World?



The rocks featured in the Jan. 5 edition of Leisure World News are part of the gas fireplace located in Clubhouse II. The fireplace is lit and extinguished each year to coincide with changes in the weather and seasons. Photos by Leisure World News



# Jan. 29: ‘Technological Advances in Genetics and Genomics’

by Fred Shapiro

It seems that not a week goes by without a published article detailing how DNA and genetics help to predict and prevent many health issues from becoming major concerns.

The Center for Lifelong Learning (CLL) presents Dr. Kimberly Jacoby Morris’s discussion, “DNA Is Here To Stay: Technological Advances in Genetics and Genomics.” The presentation is on Monday, Jan. 29, at 2 p.m. in Clubhouse I.

Although the presentation is free, residents are requested to register by Wednesday, Jan. 24, at the Clubhouse I E&R office; drop by the office or call (301-598-1300).

Jacoby Morris’s presentation focuses on the technological advances in the field of genetics and genomics. She presents a brief overview of DNA structure and function, followed by a discussion of how genetics and genomics affect biomedicine today. Topics of genetic sequencing, genetic cloning and gene editing are highlighted. Jacoby Morris is a current

postdoctoral fellow at the National Institutes of Health (NIH) in the National Institute of Biomedical Imaging and Bioengineering laboratory of Dr. George H. Patterson. Her current projects focus on developing fluorescent proteins for imaging technologies.

Prior to her arrival at NIH, Jacoby Morris was an interim organic chemistry laboratory lecturer at Bryn Mawr College in Pennsylvania. She received her doctorate from Temple University for her contributions in understanding the chemical mechanisms of UV-damaged DNA repair.

Passionate about science education, Jacoby Morris obtained a detail appointment in the Education and Community Involvement Branch of NIH’s National Human Genome Research Institute.

As people age, many regard DNA as an attractive means of learning more about someone’s ancestry and heritability. Join CLL to hear Jacoby Morris make her presentation and respond to questions.



Dr. Kimberly Jacoby Morris, courtesy photo

## Chair

◀ from page 1

targeted him as a right fit for Mutual 10’s board of directors because of his skill as a website builder.

He has been charging full steam ahead ever since, with several years spent as an integral

part of the LWCC executive committee, the Security and Transportation Advisory Committee, and several special committees.

“I’m no more powerful than anyone on the board. In fact, I’m not even going to be voting, unless there’s a tie.”

—Paul Eisenhaur

He was a member of the LWCC board of directors for six years before being elected chair, and says he learned a lot from his two predecessors,

David Frager and Barbara Cronin.

“I give her and Dave a lot of credit for being models for how it’s done,” he said.

The first board of direc-

tors meeting that Eisenhaur chairs is on Tuesday, Jan. 30, at 9:30 a.m. in Clubhouse I. All residents are welcome to attend.

# AARP Program Helps with Tax Prep

by Mark Willen

Once again, volunteers from the AARP Tax-Aide Program will prepare tax returns for residents at no charge, every Wednesday beginning Feb. 7, with appointments from 8:45 a.m.-2:45 p.m. in Clubhouse I.

Many residents have used this service for years and know how valuable it can be. To make an appointment, call or stop by the Clubhouse I E&R office beginning Wednesday, Jan. 24, at 8:30 a.m.

Gather all tax-related materials, and bring them with you to your appointment. These should include:

- photo ID. This is mandatory for all taxpayers.
- Social Security card (a copy is acceptable), as well as the Social Security cards of your spouse and any dependents
- a copy of last year’s tax return, no matter where it was prepared
- a blank check if you want your refund sent directly to your bank
- 1099 SSA form (the end-of-year statement from Social Security showing how much you received in 2017). This is different from the letter showing what you will receive in 2018.
- all Form W-2s if applicable
- all 1099 forms from pensions

and other retirement accounts

- all 1099s showing interest or dividends from all banks and financial institutions
- all 1099s showing your stock and bond sales during 2017 (This may be consolidated with your interest and dividend forms). If your stock statement does not show the basis for the stocks or bonds you sold, bring that information. If you don’t have it, call your broker or financial institution.
- any 1099-MISC forms and any record of other income received from any source
- If you usually itemize or think you will this year, bring a list of your medical expenses, charitable contributions, real estate taxes and mortgage interest.
- any other documents that might relate to your tax form

Remember that if you are married, your spouse should accompany you to the appointment if possible.

Please do not come in to do your taxes until you have received all tax-related forms. Broker and financial institution forms usually don’t arrive until late February.

Appointment slots are limited, so please call the E&R office at (301-598-1300) if you must cancel or reschedule an appointment.

## GOOD TO KNOW: SNOW PLAN

When the snow begins to fall, residents may wonder where they can find updated information about snow removal, cancellations or other services.

- Call the Daily Events Line at (301-598-1313) for snow-related information, including trash pick-up, bus scheduling and cancellations.
- See channel 972 or (residents.lwmc.com) for snow-removal updates.
- Call the main gate at (301-598-1044) to report stuck vehicles or accidents.
- Call the Grounds Maintenance Department at (301-598-1314) with snow clearance inquiries.

To view the complete snow plan, visit (residents.lwmc.com) and click on the Physical Properties Department folder in the Resource Center.

— Leisure World News



# Annual MLK Celebration Honors Unsung Heroines of the Civil Rights Movement



Clockwise, from top left: Kehembe Eichelberger performs as gospel singer Mahalia Jackson; Rev. Dr. Ramonia Lee portrays Fannie Lee Farmer; Rev. Barbara McKenzie performs the words of Rev. Pauli Murray; Christian Simmons belts out "Stand the Storm"; Rev. Diane Hugger, left, Sister Barbara Spears and Rev. Dr. Ramonia Lee clasp hands as they sing the classic protest song, "We Shall Overcome"; and members of the Leisure World Chorale lift their voices in song. Photos by Al Holston and Leisure World News

## Safety Forum

◀ from page 1

attendee suggested.

Residents can visit the Maryland Sex Offender Registry online and search by zip code, mapping the addresses of offenders to find the exact number of offenders living in a specific community.

When an offender is incarcerated, he or she is removed from the public Sex Offender Registry website and goes into an inactive status, Sanger explained.

The moment an offender is released, he or she returns to the Registry in three days.

"The sex offender registry is one tool, but most offenders are not convicted. So it falls on all of us to protect kids, listen to kids [and] believe kids," Kelleher-Smith said.

Several residents questioned the legality of preventing offenders from moving into the community.

"There's been a lot of attempts to make laws like that," Kelleher-Smith said. "It becomes easier for people to drop off the Registry, so that they can live their lives, than to remain registered. It's a kind of unintended consequence."

Feinstein pointed out that someone convicted of a sexual offense and on probation may be ordered to stay a certain distance from exclusion zones, such as schools and daycare centers.

When a registered sex offender is released back into a community, "the Sex Offender Registry does make what we call community notifications," Sugrue said,

adding that the brightly colored flyers typically appear in the common area of a condominium or community association.

Montgomery County is the only jurisdiction in Maryland that provides this service, Yamada added.

Maryland residents can also sign up for email and telephone alerts that inform them when a sex offender has moved into their community.

For more information, visit the Maryland Department of Public Safety and Correctional Services at (<http://www.dpscs.state.md.us/>).

"It takes awareness and diligence to make sure we're all protecting each other," Feinstein said.

Others in attendance were Montgomery County Councilmember Sidney Katz, who

represents Leisure World in District 3; Susan Montgomery, director of Leisure World's Social Services Department and Herman Cohen, chair of the Security and Transportation Advisory Committee.

Leisure World resident Ramon Manuel De Los Reyes was indicted by a Frederick County grand jury on Jan. 5. He faces three charges of sexual solicitation of a minor, a third-degree sex offense and second-degree rape.

The victim is a 12-year-old boy from Frederick County whom police say De Los Reyes solicited online and brought to his home in Leisure World Dec. 11, where the alleged sexual assault took place.

De Los Reyes was arrested without incident three days later.

# GOVERNANCE & Information

## Feb. 19: AARP Safe Driving Course

The E&R Department is sponsoring an AARP Safe Driving Course on Monday, Feb. 19, in Clubhouse I from 9:45 a.m.-3 p.m., with a one-hour break for lunch. You must pre-register for the course, which is for residents only. Please bring your Leisure World ID. A check payable to AARP, \$15 for AARP members and \$20 for non-members, is required at the time of registration. (Please note: AARP members must show a current membership card to receive the AARP discount.) Register in the E&R Office in Clubhouse I beginning at 8:30 a.m. on Tuesday, Jan. 23. The number of participants is limited to 25, so plan to register early. Participants should bring their driver's license and a pen or pencil to the course. If you have any questions, contact the E&R Office in Clubhouse I at (301-598-1300).

Dial 301-598-1313  
for recorded Daily Events

**2018 Broadcast Schedule - Channel 974**

*Executive Committee meetings are broadcast on Wednesday, Thursday and Friday the week after the meeting. Board of Directors meetings are broadcast on Monday, Wednesday and Friday the week after the meeting. All broadcasts are at 4 p.m. and 7 p.m.*

<b>Executive Committee Meeting</b> The Jan. 19 meeting airs on Jan. 24, 25 and 26.	<b>Board of Directors Meeting</b> The Jan. 30 meeting airs on Feb. 5, 7 and 9.
---	---

### Group Email Addresses

Residents wishing to contact Leisure World Management, the LWCC Board of Directors, or the Executive Committee may send an email to the appropriate email address listed below. It will automatically be forwarded to all members of that group who have an email address on record.

Messages to any of the email groups should pertain only to the management and operation of Leisure World trust properties, services, or activities. Please do not send emails to all three addresses, as there will be a duplication of recipients and will not result in a faster response to your question or comment. Messages pertaining to mutuals or anything else which Management, the Board of Directors, or Executive Committee does not control should also not be sent to these groups.

The group email addresses are:

- LWMC Management - management@lwmc.com
- LWCC Board of Directors - board@lwmc.com
- LWCC Executive Committee - exccomm@lwmc.com

## Notification to Security of Expected Visitors

Residents are reminded to contact the main gate when expecting guests. All guests must have authorization from a resident or a valid guest pass to gain entry. If you are expecting more than five guests at any one time, please fill out the form titled, "Notification of Guests/Visitors Expected," available from the Security Office in the Administration Building, or visit (residents.lwmc.com) and click on the Incoming Visitor Form on the Security and Transportation page. This notification will help to alleviate any possible delays at the gate.

## Physical Properties Department: Services and Fees

by Leisure World News

The Physical Properties Department (PPD) provides quality, licensed (as required) maintenance to meet today's household service needs – from major repairs and renovations to basic "handyman" duties such as picture hanging and light bulb replacement. The fee for residents is either covered through an annual service contract with PPD, or paid by residents "à la carte." For more information about PPD service contracts, sign in to (residents.lwmc.com) and select Physical Properties Department in the Resident Information drop-down menu. Labor time is charged in 15-minute increments. Service calls of 30 minutes or less are billed a minimum \$45 labor charge.

The special rate to replace a smoke detector battery or a screw-in light bulb is \$20 plus materials. A \$45 cancellation charge is billed for the same-day cancellation of appointments that have two or more hours of scheduled time. PPD is open Monday through Friday from 8:30 a.m.-4:30 p.m. For more information about service contracts or to request a service, stop by PPD or call (301-598-1500). An after-hours technician is available for emergency service Monday through Friday from 4:30 p.m.-midnight, and on weekends and holidays from 8:30 a.m.-midnight. This service is charged at the regular hourly labor rate. Service provided between midnight-8:30 a.m. is charged at the overtime rate of time and one-half. Please call the

main gate at (301-598-1044) for emergency and after-hours service. PPD accepts MasterCard or Visa for payment of work order invoices. All payments must be made in person at the PPD office. Any future refunds will be made by check refund; no credits will be given on credit card accounts.

RATE CHARGES FOR SERVICE	
Service Department	Cost
Cost Center 42 – Special Projects	\$75 per hour
Cost Center 52 – After Hours	\$94 per hour
Cost Center 53 – Electrical Maintenance	\$99 per hour
Cost Center 54 – Plumbing Maintenance	\$99 per hour
Cost Center 55 – Carpentry Maintenance	\$90 per hour
Cost Center 56 – HVAC Maintenance	\$102 per hour
Cost Center 57 – Appliance Maintenance	\$96 per hour

\*\*\*The service departments are "zero-based" operations, with the exception of Cost Center 52 – After Hours.



# LWCC Board Elects 2018 Officers and At-Large Executive Committee Members

by Leisure World News

The Leisure World Community Corporation (LWCC) board of directors selected its officers and at-large executive committee members at its organizational meeting Jan. 5.

The board officers for 2018 are Paul Eisenhaur, chairman; Robert Tropp, vice chairman; and executive secretary-treasurer, Henry Jordan.

The at-large members of the executive committee are Phil Marks, David Polinsky, Linda Wacha and Ken Muir.

The next meeting of the LWCC board of directors is Tuesday, Jan. 30, at 9:30 a.m. in Clubhouse I.



Top row, left to right: Paul Eisenhaur, Robert Tropp and Henry Jordan. Bottom row, left to right: Phil Marks, David Polinsky, Linda Wacha and Ken Muir. Photos by Leisure World News

## GOOD TO KNOW: KEEPING UP WITH THE BOARD OF DIRECTORS

by Stacy Smith,  
Leisure World News

Leisure World is a self-governed community, so several discussions and decisions occur at its monthly Leisure World Community Corporation (LWCC) board of directors meetings that residents may find informative.

Comprised of residents who represent each of the 29 mutuels, the LWCC board of directors is a voting body that controls the annual budget, makes decisions regarding major contracts and projects and determines Trust policies, programs and services.

Each of the 34 board members, elected by their respective mutual board, volunteers their time and leadership to sustain the community.

But every resident has a responsibility to stay abreast of the community's governance activities.

### Attend a Board Meeting

The LWCC board of directors meetings are open to all residents. The next meeting is scheduled for Tuesday, Jan. 30, at 9:30 a.m. in Clubhouse I.

Residents may attend to listen to the proceedings or to comment on agenda items upon which no action was taken, community policies, or the operations of the LWCC facilities during the meeting's open forum section.

Residents may also comment on an agenda item before the board votes on it. Residents who can't attend may have their say by sending an email to (board@lwmc.com).

Correspondence between residents and the board is included in the agenda packet of the following board of directors meeting.

Upcoming board of directors meeting dates, times and locations are listed on:

- the Governance Meeting Schedules section on the

Calendar of Events page of the Leisure World News

- the resident website (residents.lwmc.com) community calendar
- Channel 974's broadcast calendar

### Agendas and Minutes

Meeting agendas and minutes are available at (residents.lwmc.com).

After signing in to the website, click on the drop down arrow next to Resident Documents and select Resident Document Locator.

The Board of Directors folder therein contains the meeting agendas and minutes for 2017 and 2018, which may be downloaded, printed or viewed online.

An upcoming meeting's agenda is typically posted on the website a few days before the meeting is held.

Residents who have not signed up on (residents.lwmc.com) can still receive a hard copy of an agenda, minutes or other document by contacting their mutual's manager or

assistant, or by inquiring at the Administration Building.

### Video Broadcast

Residents who are unable to attend a meeting can catch its playback on channel 974 the following week. Board of directors meetings are broadcast on Monday, Wednesday and Friday the week after the meeting. All broadcasts are at 4 p.m. and 7 p.m.

### Get to Know Your Board Representative

Residents can contact their board representative by email, letter, phone or in-person.

Residents can find the name and contact information of their board representative by contacting their mutual manager or assistant, or by calling (301-598-1000).

Elected board members represent their mutual's constituents and should be happy to address their concerns or questions.

Interested in advertising with us?  
Email lwnewsads@lwmc.com for information

# THOUGHTS & OPINIONS: *From Our Residents*

## A Few Things to Remember

- Relevance:** Make sure that your submission is relevant to the LW community as a whole and not to just one person, mutual, or organization.
- Respect:** Remember that your opinion is about ideas, not individuals, and please avoid personal attacks.
- Brevity:** Being concise will ensure that your opinion will have maximum impact.
- Accuracy:** Document all factual assertions. Opinions that are backed up with facts are more powerful, but only if the facts are accurate.
- Ownership:** All submissions are subject to editing but you will have the opportunity to approve the edits before publication.

*Opinions are strictly those of the writers*

## Apple Computer Columns Very Helpful

I would encourage any Macintosh user to read the Apple computer columns in the Leisure World News regularly and carefully. I am not exactly a novice, as I have been an owner and daily user of Apple computers for 28 years. However, I nearly always get at least one tidbit of helpful information from every column.

I am grateful to the Leisure World News for publishing it and to the author for sharing his expertise in such a helpful way.

– Bob Hudson

## Additional Space Not Needed

In all the discussion about a new administration building, it seems to be taken for granted that more space is needed. That is not true.

To begin with, Montgomery Mutual rents a suite of offices in the building. If they provided their own offices as other mutuals do, that would free up a lot of space. I believe that asking Leisure World residents to pay more than \$5 million for a new building to accommodate one mutual's needs is wrong.

Then there's the bank. As if there aren't other banks nearby. Or, as if there is no such thing as online banking. And even if the bank were to be retained, it seems that its space could be cut in half without any hardship.

Also, the existing building has a large atrium and this area could be converted into office space by erecting partitions.

As for structural problems, why not see if there are contractors who will give a free estimate of the cost to fix them, after which a decision can be made? I think that's what most managers would do. But instead, hundreds of thousands of dollars of our money have been spent on "design studies" and I can't see one tangible

result to show for it.

Please, let's get rational about this!

– Rodney Brooks

## Inform Residents, Please!

Leisure World residents are reeling from the revelation on network television (NBC, Channel 4) and reported by the Associated Press on Dec. 19, 2017 of a child rape on our campus by a resident sex-offender. The FBI and police gathered evidence from a Leisure World apartment that was the scene of the crime. However, Leisure World residents were not informed when this happened. Why not?

All Leisure World residents are stakeholders in the community in every way, and contribute monthly to its existence and upkeep. Are we not entitled to know of police activity on the grounds, especially when outsiders already know?

There have been some other incidents in Leisure World, such as a shooting with the gunman on the run, which did merit robocall warnings and a Leisure World News article. However, a number of residents reported witnessing a police blockade on Leisure World Boulevard and the subsequent take-down of a suspect in a beating incident – with no official information given to LW residents.

Some may say that to inform residents would fuel the rumor mill, but I believe it is exactly the opposite.

Without official information, we all become dependent on the rumor mill, which then continues unabated and without correction!

Is there a policy not to inform? Or, is there a policy to inform in some situations but not in others? Who made or makes that decision? Can a policy be put into place to ensure that residents – stakeholders all – be informed of police activity in Leisure World?

Because of our financial and emotional investment here, our community is just that – a community. In my opinion, we deserve to be told!

– Sally MacDonald

## Strategic Planning and Its Importance to Leisure World

We are the members of the Leisure World (LW) board-appointed Special Strategic Planning Committee (SSPC), and we wish to elaborate upon the content of a LW News article on Strategic Planning that appeared in the Jan. 5 edition of the paper. Our intent is to make a number of critical points about strategic planning, its importance for the future of Leisure World, and the very critical involvement of residents in the planning process and in defining the ultimate plan.

It is important to first understand that strategic planning for LW will seek to engage the whole community in a process that reflects their shared views on the future of LW. The outcome, the Strategic Plan (SP), is intended to guide and direct the community and

## Submitting an Item to Thoughts & Opinions

1. Submissions must be emailed to [aclwn@lwmc.com](mailto:aclwn@lwmc.com) or delivered to the LW News Office.
2. Receipt of submissions will be confirmed by email or telephone.
3. Submissions must state the writer's name, address, telephone number, and email address, if any, but if the material is published, it will include only the writer's name.
4. LW News cannot guarantee when or if a submission will be published.
5. See LW News Guidelines and Board Standing Rules at [www.residents.lwmc.com](http://www.residents.lwmc.com).



enable it to rejuvenate itself to ensure that it is a competitive organization that progresses over the next five to ten years with renewed goals and a sound business plan. As a result, the SP provides the framework for annual and long-term budgeting and for planning and scheduling LW Trust property projects.

The goal of strategic planning is to identify an organization's high priority goals, processes to achieve those goals, and the resources required to implement them. The process typically examines the strengths and weaknesses of the community, its current and future environment (internal and external), the values of the members of the community, current opportunities and threats to the community, and significant trends affecting senior living communities.

The rationale behind strategic planning is that every organization, whether it be a corporation, university, or community like LW, starts with a long period of growth (e.g., adding new homes, development of amenities, and

incorporation of new ideas). At some point, however, the organization reaches maturity. While change may continue, the pace slows and may even stop. Leisure World, at age 50, is at this point!

There are several alternative paths once maturity is reached. One is that the community ceases to grow, and may even decline. In this scenario, communities such as LW could experience fewer new residents, a decline in amenities, and/or possibly declining property values.

The alternative is a community that revitalizes itself through fresh and exciting thinking that is developed in a well-done SP. The community then experiences a period of renewed growth and development that may include better and more attractive amenities, significant interest in the community by potential new residents, and rising property values. Indeed, the community becomes highly competitive with newer communities, and may even take leadership in what it can offer current and future residents.

Moreover, the SP enables systematic planning and a continuous and logically staged revitalization process. The SP provides the basis for future decision making on many important issues (budgeting, development of new amenities) in an agreed-to context, rather than new ideas being developed without a broad picture of the communities' future.

The SP will be based on community input, discussions at a retreat involving community leaders, surveys, forums, etc. However, and we think this is very important to appreciate (and not well portrayed in the article) the final plan will be written by the SSPC and involve considerable openness and feedback from the community.

Finally, we recognize that strategic planning is costly. However, we are convinced that the payback to the community in terms of providing a vision and plan for the future, continuous improvement in the quality of life for residents, as well as increased property values and attractiveness of LW to new residents, will far more than pay the costs of the plan. Indeed, considering that

the resales fund from home sales will be many millions of dollars over the next 10 years, the cost of the Strategic Plan, which will guide the spending of the resales fund and other LW funds, is only a small fraction of the total LW expenditures. To enable and sustain LW as a choice community for current and future residents, the SP is a critical, cost-effective investment.

– Arthur N. Popper  
Girma Allaro  
Richard Fisher  
Kathy Kinsella  
Sharon Otto

## Low interest rates getting you down? Let's talk.

**William P Mason IV, AAMS®**  
Financial Advisor

17904 Georgia Ave Ste 107  
Olney, MD 20832  
301-774-8500  
[www.edwardjones.com](http://www.edwardjones.com)

**Edward Jones®**  
MAKING SENSE OF INVESTING

Member SIPC



Learn how to make your home accessible and tap into funding for your project.

This informative seminar brings together one of the DC area's most recognized certified aging in place specialist (Russ Glickman, president of Glickman Design Build) with a leading insurance expert (Alan Schulman of The Meltzer Group).



Russ Glickman, CAPS, CEAC, UDCP, GACP, MCR

### Russ Glickman will highlight:

- Examples of adaptable features, accessible design, and universal design
- Creating a master plan for your home
- How to implement a master plan in phases
- Open question session on accessible options for your home

### Alan Schulman will highlight:

- How to protect your assets long-term, with a Continued Care Plan
- Innovative new ways of using long term care protection
- How to eliminate annual recurring costs
- Open question session on all insurance plans



Alan Schulman, PFP, ACA



The seminar will be held at Leisure World in the Chesapeake Room in Clubhouse I at 3700 Rossmore Blvd. Silver Spring on Saturday, February 10<sup>th</sup> at 10 AM.

Seating is limited so reserve your seat today by calling 301-444-4663





# EVENTS & Entertainment

## ■ Ballroom Dance Club

### Jan 27: First Dance of 2018

by Joyce Hendrix

Pocket Change, a longtime favorite of Leisure World ballroom dancers, provides the music for the first dance of 2018 on Saturday, Jan. 27. Doors open at 7 p.m., with music from 7:30-10:30 p.m. in the Clubhouse I Crystal Ballroom.

Light hors d'oeuvres are provided at the first intermission as a thank you to all Club members. Admittance cost is \$10 per person for members and \$15 for non-members and guests. All non-members and guests must be invited by a Club member.



Make reservations ahead of time by calling Connie Roby at (240-393-9808) to ensure a seat at the table of your choice.

## ■ Fireside Forum

### Feb. 4: A History of the Zapruder Film

by Jonas Weiss

Alexandra Zapruder tells the story of her grandfather's home movie of President Kennedy's assassination at the next Fireside Forum program on Sunday, Feb. 4. Zapruder is the author of the book, "Twenty-Six Seconds: A Personal History of the Zapruder Film," about this event.

She began her career as a staff member at the U.S. Holocaust Memorial Museum in Washington, D.C. She served as a curator for the museum's exhibition for young visitors, "Remember the Children, Daniel's Story."

Her first book, "Salvaged

Pages: Young Writers' Diaries of the Holocaust," won the National Jewish Book Award in the Holocaust category. She wrote and produced a documentary film, "I'm Still Here: Real Diaries of Young People Who Lived During the Holocaust," which aired on MTV and was nominated for two Emmy Awards.

Zapruder travels extensively to speak to students, teachers and the public about her books.

She is a graduate of Smith College and has a master's degree in education from Harvard University.

The program is at 2:30 p.m. in the Clubhouse II auditorium. Becky Rizvi is the host for the speaker.



Alexandra Zapruder, courtesy photo



## ■ Education and Recreation Department

## ■ Foundation of Leisure World

### Feb. 13: Celebrate Mardi Gras and Valentine's Day with the Dixieland Express



The Dixieland Express performs at a recent jazz club event. Standing from left to right are Merle Biggin on the tuba, John Stewart on trombone, Les Elkins on cornet and vocals, Suzanne Gekke on clarinet, Greg Williams on drums and Rick Eldridge on banjo, piano and vocals. Courtesy photo

This year, since Fat Tuesday and Valentine's Day are only one day apart, the Dixieland Express of Maryland returns to Leisure World to celebrate Mardi Gras and Valentine's Day with some of the best traditional jazz north of the Big Easy – New Orleans, Louisiana, along with romantic music.

John Stewart, resident and bandleader, is happy to bring back the band with its authentic Dixieland instrumentation on Tuesday, Feb. 13, from 7:30-9:30 p.m. in the Clubhouse II auditorium.

The band will play a wide variety of music suitable for listening, dancing at different tempos and even marching. Feel free to wear masks and beads and other Mardi Gras apparel if you wish and join us for the lively celebration.

The band will also get you in the mood for Valentine's Day by entertaining you with romantic songs such as "Only You," "I Thought About You," "I Can't Give You Anything but Love," "Nobody's Sweetheart Now," and more.

The band plays at local venues

on a regular basis, including annual performances for the Potomac River Jazz Club, the Kensington Model Train Show and summer series, Baltimore trade shows, second line performances at special functions and at many other senior communities.

So, join the Dixieland Express for an exciting night of authentic New Orleans-style music reminiscent of the romantic French Quarter – a perfect way to celebrate Valentine's Day.

Sponsored by the E&R Department and the Foundation of Leisure World, tickets for this event are \$20 per person and are on sale at both clubhouse E&R offices. The cost includes light hors d'oeuvres; a cash bar will also be available. Please bring your Leisure World ID.

The Foundation of Leisure World is a 501(c)(3) organization that was established for health, educational and cultural purposes. Contributions to the Foundation may be claimed as deductions on income tax returns to the extent permitted by law.





# Feb. 18: Photo Slideshow Matinee Features Local Artwork to Inspire Seniors

by Fred Shapiro

The Sunday, Feb. 18, photo slideshow matinee features Fred Shapiro's photos and production titled "Art in Museums, Parks and Leisure World." The show starts at 3:30 p.m. in the Clubhouse II auditorium.

Many residents probably took courses in art while in high school and/or college, or have visited art museums at

home or abroad. Many have also marveled at the classic images created by artists whose names are included in the history of civilization. A number of residents have even undertaken the task of creating their own works of art.

February's slideshow hopes to show how creating art can be a way for seniors to exercise their minds and find hidden talents. What better

way to minimize the potential loss of memory as we age than by keeping our minds active and our hands busy.

Many artists at Leisure World started painting only after moving here, and their work is quite good.

Just check the Clubhouse I hallway, library or walls of the Credit Union in the Administration Building for proof.

Shapiro's photographs were taken at various museums, in outdoor settings and in Leisure World's art studio.

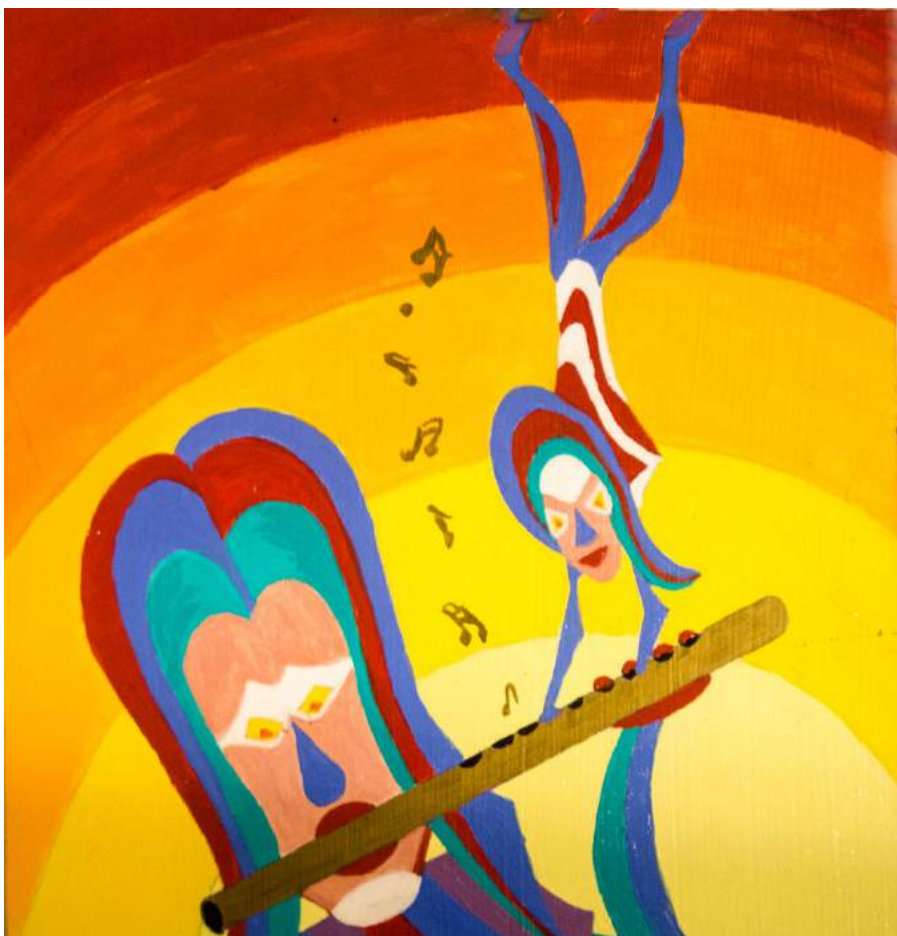
He was part owner of an art supply store located around

the corner from Pratt Institute in Brooklyn, New York.

Come see the slideshow on Feb. 18 and give thought to the question, "Can I do that?"



"Jeff's Interests as a Youngster." Abstract painting by Fred Shapiro



"Rhonda's Interests in High School." Painting by Fred Shapiro



"Menorah." Painting by Fred Shapiro

## Coming in 2018

*The E&R Department is pleased to provide the following programs.*

- |                    |  |
|--------------------|--|
| Jan. 20, 4 p.m.    | Clarinetist Bill Wright – A Tribute to Benny Goodman         |
| Feb. 13, 7:30 p.m. | Dixieland Express – Mardi Gras/ Valentine's Day Celebration  |
| March 8, 1:30 p.m. | Steve Friedman on Broadway's Critics                         |
| March 17, 7 p.m.   | Hurley School of Irish Dance – St. Patrick's Day Performance |
| March 24, 7 p.m.   | Gerry Katz – Death at the Palace Theatre                     |
| April 28, 7 p.m.   | The Rat Pack Together Again                                  |

*Watch Leisure World News for more information on these and other upcoming programs throughout the year.*

## PLEASE, NO CASH

The E&R offices in Clubhouse I and II do not accept cash payment for programs or activities it sponsors. Payment can be made by check payable to LWMC. Or, if \$10 or more, payment can also be made with a credit card (MasterCard, Visa or Discover).

When paying for programs or events sponsored by Leisure World clubs and organizations, payment can only be made by check, payable to that club or organization.





■ Unitarian Universalists of Leisure World

Jan. 23: ‘The Day Tomorrow Began’

by Dave Edfors

On Tuesday, Jan. 23, the Unitarian Universalists present the film “The Day Tomorrow Began,” produced and directed by fellow Unitarian Universalist member George Tressel.

The film was originally created by Tressel for the Atomic Energy Commission (AEC) to commemorate the 20th anniversary of Chicago Pile-1, the world’s first successful controlled, self-sustaining nuclear chain reaction that went critical on Dec. 2, 1942.

This experiment, a legacy of the World War II Manhattan Project, may be called the birth of the Atomic Age since both peaceful and military use of nuclear science progressed from this experiment.

At the time, Tressel was a student at the University of Chicago, class of 1943.

He was an eyewitness who later, under auspices of the AEC, had an opportunity

to collect testimony and comments from most of the prominent leaders in nuclear science of the time.

Tressel will introduce the film, provide comments and answer questions about the film and the early days of the Manhattan Project.

He has spent much of his career in the television industry and was part of the successful effort in those early years that brought television into every household.

Join the Unitarian Universalists on Tuesday, Jan. 23, at 2:30 p.m. in Clubhouse II for this interesting and timely presentation.

Light refreshments and conversation follow the program.

You don’t have to be a member of the Unitarian Universalists to attend meetings. All residents are welcome.

For information about Leisure World’s Unitarian Universalists, contact Mike Benefiel at (240-204-2061) or (mike\_benefiel@yahoo.com).

■ Jewish Residents of Leisure World

Jan. 24: ‘Keep Quiet’

by Jonas Weiss

Jewish Residents of Leisure World (JRLW) and Coming of Age in Maryland present the documentary film “Keep Quiet” (2016, 1 hour 30 minutes, documentary, Hungarian with English subtitles, not rated) on Wednesday, Jan. 24, at 1:30 p.m. in the Clubhouse II auditorium.

The film is about a young Hungarian neo-Nazi leader whose life is upended when he discovers his Jewish roots.

He enlists the help of the rabbi of the Orthodox community in Budapest, but is his newfound religiosity sincere or a calculated political move? A discussion follows the film.

Tickets, \$7 per person, are available beginning Friday, Jan. 5, at 8:30 a.m. in the Clubhouse I E&R office. Checks only; made payable to JRLW. All residents are welcome.



■ Italian Social and Cultural Club

Jan. 28: Members Screen ‘Tea with Mussolini’

by Flo Merola

On Sunday, Jan. 28, The Italian Social and Cultural Club presents the fascinating film “Tea with Mussolini” (1999, 1 hour 57 minutes, drama/comedy/war, rated PG) at 2 p.m. in Clubhouse I.

It tells the story of an orphaned Italian boy who is raised by a group of women in Mussolini’s Italy, with magnificent portrayals by Judy Dench, Maggie Smith, Lily Tomlin, Joan Plowright and Cher.

Tea, coffee and desserts are served. The event is free for members and \$5 for guests.



■ Education and Recreation Department

Thursday Afternoon at the Movies

Feb. 15: ‘La La Land’

The E&R Department is pleased to present “Thursday Afternoon at the Movies.” Films are shown at 1 p.m. in the Clubhouse II auditorium. On Thursday, Feb. 15, the presentation is “La La Land” (2016, 2 hours 8 minutes, comedy/drama/music, PG-13 for some language).

Free tickets, limit two per person, are required and can be obtained from the E&R office in either Clubhouse I or II, beginning Tuesday, Jan. 23, at 8:30 a.m. Please bring your Leisure World ID.

While pursuing showbiz fame, jazz pianist Sebastian (Ryan

Gosling) falls for aspiring actress Mia (Emma Stone), and the two embark on an intense love affair. But as their separate paths of ambition force them to make

tough choices, their relationship starts to fray.

Written and directed by Damien Chazelle, the film won six Oscars, seven Golden Globes and numerous other awards.

Thursday movie screenings are for your enjoyment; there is no charge.

Be sure to pick up your ticket(s) in advance if you plan to attend. Please note: No one will be seated after 1 p.m.



2018 Movie Schedule

Sponsored by the E&R Department

Movies are FREE and shown for your enjoyment in the Clubhouse II Auditorium. Please pick up your tickets (limit two per person) on the date indicated below at either Clubhouse I or II. Please bring your Leisure World ID and remember tickets can go fast.

Show Date & Time	Movie	Tickets Available
Jan. 28, 2 p.m.	The Zookeeper’s Wife	SOLD OUT
Feb. 15, 1 p.m.	La La Land	Jan. 23
Feb. 25, 2 p.m.	Hidden Figures	Feb. 6
March 15, 1 p.m.	Jackie	Feb. 20
March 25, 2 p.m.	The Shack	March 6
April 19, 1 p.m.	Queen of Katwe	March 19

Movies are subject to change.



**FLOORMAX**

**10'X10' KITCHEN FLOOR**  
approx \$989 Installed



DURACERAMIC now with **SCOTCHGARD**  
PROTECTOR  
WILL NOT STAIN, WILL NOT FADE, WILL NOT WEAR OUT!

Carpet • Hardwood • Ceramic • Laminate • Vinyl • Bathroom Remodeling

[www.floormax.us.com](http://www.floormax.us.com)

**The Flooring Professionals Since 1985**

MHIC #41515

All Leisure World residents receive

**FREE**

in home estimates!

**Aspen Hill Shopping Center**

**(301) 460-4100**

**\$250 OFF**

any PURCHASE of  
**\$3,000 or more!**  
**HURRY Sale Ends SOON!**

(Limited time only. Cannot be combined with other offers. Must be presented at time of purchase)

[signalfinancialfcu.org](http://signalfinancialfcu.org)



#SignalStrength

Signal's certificate rates are

**SKY HIGH**

Climb up to a **higher rate certificate** and start saving.

Signal's certificate rates are among the highest available in the DC metro area and in the nation.

TERM	APY <sup>1</sup>
1 year	1.48%
2 year	1.80%
3 year	1.68%
4 year	2.02%
5 year	2.40%

**0.15%**  
REGULAR SAVINGS  
ACCOUNT APY<sup>1</sup>

**2.40%**  
5-YEAR  
CERTIFICATE APY<sup>1</sup>

For more information, call 301-933-9100, ext. 105  
Visit our branch in the admin building to open an account!

<sup>1</sup> APY—Annual Percentage Yield. Divided rates are: 1-year certificate, 1.40%; 2-year certificate, 1.785%; 3-year certificate, 1.666%; 4-year certificate, 2.006%; 5-year certificate, 2.374%. A \$500 minimum opening deposit is required. A penalty will be imposed for early withdrawal. IRA Certificates are not eligible. Available to Signal Financial Federal Credit Union members. See the Membership page on our website, [signalfinancialfcu.org](http://signalfinancialfcu.org), to find out how to join. Rates and terms are subject to and or change at any time without notice. For more information about terms and penalties for share certificates, visit the Share Certificates page on our website: [www.signalfinancialfcu.org/banking/investment-solutions/share-certificates](http://www.signalfinancialfcu.org/banking/investment-solutions/share-certificates).  
<sup>2</sup> A standard share savings account at Signal Financial FCU pays 0.15% APY and requires a \$50 minimum balance to earn the dividend.  
Federally insured by NCUA.

**signalfinancial**  
Federal Credit Union



## ■ FISH (Friends in Sickness and Health)

### The Place for Loans and Lost Items

by Beth Leanza

**A**fter 30 years, St. Jude Ranch no longer accepts and reuses used greeting cards. Residents can still recycle their own cards or donate unused cards to the Women's Board Thrift Shop at MedStar Montgomery Medical Center.

#### Hospital Beds and Motorized Wheelchairs

FISH does not accept donations of hospital beds, but a few Lions Clubs in the area do. The Kensington Volunteer Fire Department may also accept them. For more information, call the FISH office at (301-598-1345).

#### Lost and Found

Residents who receive address labels in the mail can put them

on their umbrella, cane or other frequently used item to prevent it from getting lost. Consider placing a tag with your cell phone number on your car keys' ring.

#### Loaned Items

Residents who have stored away items such as a commode, walker or wheelchair they are no longer using are encouraged to return it to FISH. Please also inform family members or other members of the household when a particular item is on loan from FISH. FISH items have a sticker that reads, "Property of FISH" and an inventory number.

#### Volunteers

Most volunteers have a regular session each month, but at least two substitute volunteers are currently needed. If interested in volunteering, contact Beth

Leanza, FISH president, at (301-598-4569) to schedule a training session.

#### General Information

FISH lends donated assistive equipment, such as walkers, wheelchairs and canes, to residents and employees of Leisure World.

The FISH office is located

in Clubhouse II. The office is open Monday to Friday from 10 a.m.-4 p.m., except for major holidays. If Montgomery County Public Schools are closed due to inclement weather, the FISH office is also closed.

The staff in the E&R office can assist residents after hours by lending an item or accepting a return or donation.

## GOOD TO KNOW:

### FROM NEUROLOGY TO PODIATRY, MEDSTAR HEALTH HAS RESIDENTS COVERED HEAD TO TOE

by Leisure World News

**A**djacent to the Physical Properties Department, the MedStar Health medical center bustles with a few dozen generalists and specialists providing healthcare weekdays from 8 a.m.-5:30 p.m.

Several of the healthcare offerings are open to all residents; you do not have to be a MedStar patient to use their services. They are:

- Acupuncture (301-960-9826)
- Audiology/Hearing (301-468-7670)
- Dental (301-598-1015)
- Durable Medical Equipment (877-224-2294)
- Family and Nursing Care (301-588-8200)
- Laboratory Services (301-598-1045)
- Massage Therapy (202-306-0894)
- Rehabilitation (physical therapy) (301-438-6280)
- Pharmacy (301-598-1548)
- Social Services (301-598-1581)

MedStar Health patients also have access to providers in many other specialties. Call the medical center's main line at (301-598-1590) to schedule an appointment

with a provider from any of the specialties listed below, unless a separate phone number is indicated:

- Internal Medicine (Primary Care)
- Cardiology
- Dermatology
- Dietary/Nutrition
- Endocrinology
- Neurology
- Ophthalmology
- Orthopaedics (301-774-8958)
- Physiatry/Pain Management (301-438-6280)
- Podiatry (301-598-0130)
- Psychiatry\*
- Psychotherapy
- Rheumatology

\*Dr. Jean D'Souza will transition her psychiatry practice to MedStar Washington Hospital Center effective Tuesday, Jan. 30. Patients are encouraged to schedule any future appointments with Dr. Elsie Turner at Leisure World's medical center.

More information about services available at the medical center can be found at ([medstarhealth.org/LW](http://medstarhealth.org/LW)).

For a complete list of provider names, visit ([residents.lwmc.com](http://residents.lwmc.com)) and click on Medical Center under the Resident Information drop down menu.

## ■ Memory Café

### Jan. 25: Program Helps Residents Living with Memory Loss

by Nooshin Javan

**T**he Memory Café, a program that helps people living with early-stage dementia, Alzheimer's disease and mild cognitive impairment remain mentally and socially active, resumes on Thursday, Jan. 25, from 2-3:30 p.m. in Clubhouse I.

The Memory Café is a fun, relaxed way for individuals living with memory loss to get out, get active and get connected with one another through community-based gatherings, and to take advantage of available resources.

Memory Café was first launched at Leisure World in May 2016. The Health Advisory Committee partnered with the Montgomery Region of the Alzheimer's Association to initiate this monthly gathering, a "Live Well" resource of the Association.

The Alzheimer's Association encourages early detection so that families can plan for the future together and take advantage of available resources. With earlier detection, individuals can find opportunities for appropriate social engagement to interact and connect with others facing similar challenges.

Traditionally, individuals have been diagnosed later in the progression of Alzheimer's disease. Many dementia-related programs are focused on serving people in the mid-stage of the disease, but Memory Café helps participants in the early stages.

The Memory Café meets on the last Thursday of each month from 2-3:30 p.m. in Clubhouse I. Registration is required. Contact Diane Vance at (240-428-1342) or ([dvance@alz.org](mailto:dvance@alz.org)) if interested.



# Health & Fitness In Brief

**Al-Anon Meeting:** Al-Anon (for family and friends affected by alcoholism) meets Fridays at 2 p.m. at Our Lady of Grace Church Parish Center, near Leisure World. Enter through the back door (15661 Norbeck Blvd., Silver Spring). For more information, call Bridget at (301-598-3043).

**Alcoholics Anonymous (AA):** Newcomers welcome. (If you're from outside Leisure World, check in at the main gate.) Meetings are Mondays at noon (Step Meeting) and Thursdays at 6 p.m. (Big Book) in Clubhouse I. For questions, contact Laurie at (240-558-4454).

**Alzheimer's Caregivers Support:** The Alzheimer's Support Group meets the first and third Wednesday of each month at 3 p.m. in The Inter-Faith Chapel library. For more information, call Sunny at (301-438-2446).

**Bereavement Support Group:** If your spouse or long-term partner died in the recent past, you may be able to participate in a twice-monthly bereavement support group that meets on the first and third Tuesday of the month, 2-3:30 p.m., in the conference room at MedStar Health, 3305 N. Leisure World Blvd. Hospice Caring Inc. sponsors group meetings. Registration is required. If interested, please call Anne Baker at (301-990-0854).

**Essential Tremor Group:** The next meeting of the ET

group is Thursday, Feb. 1, at 10:30 a.m. in Clubhouse I. The group meets the first Thursday of the month.

**Free Blood Pressure Testing:** Come to Clubhouse I for free blood pressure testing, available on the first and third Tuesdays of the month from 9-11 a.m.

**Parkinson's Support Group:** The Leisure World Parkinson's Support Group was created under the auspices of the Parkinson Foundation of the National Capital Area to provide support to patients suffering from Parkinson's disease (PD) and their families and caregivers. The group meets the second Tuesday of the month at 3 p.m. in Clubhouse II. Usually there is a presentation by a speaker with knowledge about PD, physical therapy or some other related subject, followed by a period of Q&A. There are no memberships or fees to pay, and the meetings are open to anyone who may be interested. Questions? Contact Ray Weil at (301-598-3447) or (raywwjr@hotmail.com).

**Stroke Support Group:** You are not alone! The Leisure World Stroke Support Group invites stroke survivors and caregivers to its monthly meetings (except July and August) on the second Wednesday from 1:30-3:30 p.m. in Clubhouse II. No registration is needed, and all are welcome. For more information, contact Sally MacDonald at (240-669-4233) or (sn3macd@aol.com).



**Celebrating Another Successful Year in the Community!**  
 Top 1% of Agents Nationwide • Seniors Specialist • Community Resident  
 Former Montgomery County Teacher • Website: [www.sueheyman.com](http://www.sueheyman.com)

**Weichert**  **Sue Heyman**  **301-580-5556**  
 Office: 301-681-0550 Email: [sueheyman@aol.com](mailto:sueheyman@aol.com)

**SUE'S 2017 TRANSACTIONS – UNDER CONTRACT, SETTLED LISTINGS + SALES**

*Dear Reader,*  
 Last year was a busy and productive one. Because of my vast experience, I also list, sell, & consult on properties in the surrounding Metro area for neighbors, past clients, & those moving to the community. My currently available listings are detailed in this paper's classifieds under "Real Estate for Sale." Here are some of my outside sold 2017 listings.

7218 Central Ave.  
Takoma Park, MD 20912

2801 Nisqually Ct.  
Silver Spring, MD 20906

100 Quaint Acres  
Silver Spring, MD 20904

Cheers!  


 <b>THE GREENS I</b> 15101 Interlachen Drive #610	 <b>THE GREENS II</b> 15115 Interlachen Drive #321 & #814	 <b>CO-OP GARDEN APTS.</b> 3272 & 3398 Gleneagles Dr. #2D, #3B 3383 Leisure World Blvd. #1A	 <b>CO-OP TOWNHOUSES</b> 3591 & 3471 S. Leisure World Blvd.
 <b>VILLA CORTESE</b> 14800 Pennfield Circle #304	 <b>CONDO GARDEN APTS.</b> 3511 Fitchburg Drive #1C	 <b>TURNBERRY COURTS</b> 2904 N. Leisure World Blvd. #403	 <b>TURNBERRY COURTS</b> 3005 S. Leisure World Blvd. #304
 <b>THE OVERLOOK</b> 3100 N. Leisure World Blvd. #401, #621, #803 & #923	 <b>LARGER PATIO HOMES</b> 3419 Island Creek Court 3502 Fitzhugh Lane	 <b>THE REGENCY</b> 3734 Glen Eagles Drive	 <b>THE REGENCY</b> 3814 Glen Eagles Drive

Have you signed up on  
**[residents.lwmc.com](http://residents.lwmc.com)?**

## The website is:

- accessible only to owners, residents and staff
- documents are searchable
- ADA compliant

## On it you'll find:

- community news
- club information
- governance documents
- your mutual information
- and more!



# CLUBS, GROUPS & Organizations

## ■ Lions Club of Leisure World

### Jan. 22: Daytime May Be the Right Time

by Maxine Hooker

Are you looking for an organization that can help you utilize your gifts and be of service to others? If so, then join the Lions Club at its kick-off daytime meeting on Monday, Jan. 22, from 11 a.m.-noon in Clubhouse I.

The meeting is open to all members, as well as residents



who may want to join the Club or learn more. Attendees have an opportunity to hear about the specific projects and committees the Club is involved with, and how their gifts and talents can best be used.

Those who are interested or have questions may contact Lion Carmiller Dorsey, membership chair, at (carmillerw7@aol.com).

## ■ Town Meeting Organization

### Jan. 26: Group Holds First Meeting

by Richard Thornell

On Jan. 2, the Town Meeting Organization's application for group recognition was approved by the E&R Advisory Committee.

The group appreciates the excellent turnout and presentations made in support of our application, as well as the strong community support members have received from neighbors and friends.

Given the magnitude and urgency of governance problems that the Town Meeting Organization believes the community faces, the group intends to meet once a month.

The first organizational meeting is on Friday, Jan. 26, at 2 p.m. in Clubhouse I. The

group will elect temporary officers and select a nominating committee to vet and propose a slate of officer nominees for a term of one year.

The meeting will include a discussion about the Leisure World Community Corporation board of directors' plan to build a new Administration Building.

The Organization has put together a small committee that includes Tom Conger, an experienced planner with a master's degree in community planning from the University of Cincinnati, S. Katzman, "JustUs" president, and Janice McLean, LW Green president.

All residents are invited to attend, participate and become a member of the Town Meeting Organization.

## ■ Italian Social and Cultural Club

### March 11: Festivale Italiano Returns

The next Club event is the annual fun-filled Festivale Italiano on Sunday, March 11, at 4 p.m. in the Clubhouse I Crystal Ballroom. As always, it is open to members, their guests and all residents. Ticket information is forthcoming.

— Flo Merola

## ■ Ballroom Dance Club

### Jan. 27: Renew Membership at Next Dance

by Joyce Hendrix

The Saturday, Jan. 27 dance is an opportunity to renew Club membership.

For details about the dance, see the Events and Entertainment section of this publication.

Membership remains at \$10 per person for residents.

Please bring a check, payable to LWBDC, to the next dance to renew membership for the year.

Members pay \$10 per person for each dance, and all non-members and guests pay \$15 per person, per dance.

The dress code for all winter dances is dressy for the ladies,

and coats and ties for the gentlemen.

The 2018 dance schedule is available at all dances.

The Club strongly suggests making reservations ahead of time with Connie Roby at (240-393-9808)

to ensure seat at the table of your choice. Each table seats 10 people.

Please arrive on time so that the ticket desk volunteers may also enjoy the dance.

The Club's next dance is on

Saturday, Feb. 24, and features The Helmut Licht Trio.

Put on your dancing shoes and come dance with us in 2018.



## ■ Vegetarian Society of Leisure World (VSLW)

### Feb. 13: Attend Meeting to Learn About Vegetarian Summerfest

by Bob Fenichel

The next VSLW meeting is on Tuesday, Feb. 13, at 7 p.m. in Clubhouse II.

After a brief business meeting, a panel discusses the five-day Vegetarian Summerfest held every July in Johnstown, Pennsylvania.

Registration for this event usually starts the beginning of February.

The North American Vegetarian Society sponsors the event. More information is available at (www.vegetarian-summerfest.org).

Johnstown, with its cooler summertime air, is a three and a half hour drive from

Leisure World.

Additional information on VSLW activities is found at (www.vslw.org).

The Group also has an email list, through which members make last-minute announcements.

Contact secretary Iris Wolf at (leonardbwolf@msn.com) if you would like to be added to the list.

Please note that everybody is welcome at VSLW activities; you don't have to be a vegetarian to participate.

The mission statement of VSLW is "to support group members in maintaining a healthy lifestyle by eating a plant-based diet."



# The Weather is Frightful, But the Art is Delightful

by Ann Bolt

The snow is blowing in Clubhouse I as the January exhibit pays homage to the cold elements.

Featured winners of Signal Financial Federal Credit Union's art exhibit include Jeanette Shampain's first place "Winter in Olney," Kathleen Hopkins' second place "Winter," and Helen Ryan's third place "Winter Wonderland."

Shampain has been studying for the last two years with Rossmoor Art Guild (RAG) instructor Ron Ehrlich.

She credits Ehrlich's guidance and the encouragement of her classmates for her successful venture into watercolor painting.

She previously owned an art gallery in Florida and was a reading specialist at a Hebrew school in Montgomery County. She now tutors autistic children using art.

A Montgomery County native, Shampain's RAG classmates include Houston Hancock, whom she has known since her kindergarten years.

She claims she hasn't won anything in her life; she'll have to rethink that now.

Congratulations to all the winners, and a big thanks to those who shared their paintings at the Credit Union.

In February, RAG students present another show at the Credit Union, with works interpreting the theme of love.



The first place winner of the Signal Financial Federal Credit Union exhibit, Jeanette Shampain, with her painting, "Winter in Olney."

The show is one entry per student, with some selection required due to constraints in available space.

## Winter Classes

The weather has caused a bit of a jerky start to RAG's winter classes, but most students are getting the hang of things through make-up days and extra time spent in the studio or at home.

The Winter I session ends Saturday, Feb. 10, with a one-week break before the next session begins. Come join us.

Classes cover the various ways of exploring art, which include watercolor, oil, acrylics, colored pencil, mixed media and so on.



Third place winner Helen Ryan's painting, "Winter Wonderland."



The latest Open Studio Project, "Wheels." Left to right: "Wagon Wheels" by Nancy Albrecht, "Prosthetic Wheels for Your Favorite Pet" by Maria Clark, "Abstract Wheels" by Maggi Mannarino, "BMW Motorcycle Wheel" by Ann Bolt, and "A Woman's Version of a Motorcycle" by Violet "Vicky" Batkin. Photos by Ann Bolt

Each teacher offers a unique perspective while the student finds what best suits his or her own needs.

Some students enroll in more than one class at a time to glean

all those nuggets of guidance.

RAG thanks the family of former student Patty Biondo, and current teacher Sharon Minor, for their art supply donations.

## Baronessa

Italian Restaurant

(Under new management)

1302 E Gude Dr Rockville  
MD 20850

**(301) 838-9050**

**15% OFF**

Dinner or  
Weekend Brunch

Cannot be combined with other offer.  
15% off, up to max. \$20. Coupon must be  
presented at the time of purchase.

Expires February 15th, 2018

**BP SERVICE**  
Carpet & Upholstery Cleaning

Commercial and Residential  
Pet Stain Removal, Gum Removal  
& Deodorize  
We Move and Replace Most Furniture

Houses/Apts/Offices/Churches/Daycares

**Benjamin Pena**  
Office: 301-942-8789 • Cell: 240-505-5213

**Preserve Your Family Memories!**  
Photo Scanning  
by Kim

Personalized service  
at an affordable price  
Volume discounts available!

Call Kim at (301) 438-3140  
Virtual Computer Services  
www.creative-alternative.com



# Jan. 23: Open Competition

by Fred Shapiro

A photography exhibit and competition featuring photographs taken by members of the Rossmoor Camera Club is located in the Signal Financial Federal Credit Union in the Administration Building.

Ballots have been made available for residents to indicate which photograph they like best, and a collection box for the ballots is located near the exhibit.

At the end of the month, the photographer of the most popular photograph will be presented a gift card.

Be sure to stop by the Credit Union to see the exhibit and vote for your preference. The exhibit comes down at the end of January.

## Open Competition

The open competition on Tuesday, Jan. 23, allows photographers greater latitude in editing and adjusting photographs than is normally allowed, and any subject is permissible for entry.

For this competition, Club members can enhance their photographs using computer software.

Club officers are eager to see how much this freedom will affect the entries in both the General and Advanced categories.

Residents are welcome to attend and enjoy the photos submitted by Club members and the comments offered by the judge. The Jan. 23 competition is at 7 p.m. in Clubhouse II.



From left: Stu Lillard, Gaby Dusan, James Mannah, Nabiha Zayat-Calcutt, Colin Creighton, and Shevae Sims at Signal Financial Federal Credit Union. Photo by Fred Shapiro

## Upcoming Program

The Club's officers are meeting regularly and discussing ways of getting more residents to join and participate in the Club's educational meetings and competitions.

Considering the advanced technology that many photog-

raphers now use to take photographs, Ron Masi will give a presentation on "Great Photos with the iPhone" in February.

For more information about the Rossmoor Camera Club, visit the Club's website at ([www.rossmoorcameraclub.com](http://www.rossmoorcameraclub.com))

**TAKE THE STRESS OUT OF YOUR MOVE!**

**CONTINENTAL MOVERS**  
Professional Trained Movers Who Really Care

Local & Long Distance • Packing Services • Pianos and Big Objects  
Owner Operated since 1982 • References • Best Rates in DC  
\$80 x two men • Pickups / Deliveries



[www.continentalmovers.net](http://www.continentalmovers.net) • [Cmor53607@msn.com](mailto:Cmor53607@msn.com)

202-438-1489 | 301-340-0602

**Custom Drapery**  
*Valance, Cornice, Sheers,  
Blinds, and Shades*

**30% off**

Free in Home  
Consultation

Authorized Dealer of  
Grabier  
&  
Carole Fabrics

**ELA INTERIOR DESIGN**

Call: 240-676-4300



# AUTO BODY

*Rockville Central*  
Just off East Gude Drive  
**301-424-3500**

**FREE ESTIMATES  
IF YOU CAN'T COME TO US  
WE WILL COME TO YOU**

**SPECIAL OFFER**

- ❖ Paintless Dent Removal from \$75
- ❖ Free Pick up & Drop Off
- ❖ Free Towing to Shop
- ❖ Free Touch Up Paint
- ❖ Lifetime Warranty on All Repairs
- ❖ Special Discounts for LW Residents

**We Happily Handle All Insurance  
Claims for You**

**Ask for Richard or Tony**



**FAMILY FOOT & ANKLE  
ASSOCIATES OF MARYLAND**

**Dr. Michael Frank  
Dr. Marc Goldberg  
Dr. Adam Lowy**

**3 Convenient Locations  
Minutes from Leisure World**

### OLNEY

Oland Professional Center  
3408 Olandwood Ct. Suite 204  
Olney, MD 20832  
(301) 924-5044

### KENSINGTON

Family Foot & Ankle Associates of Maryland  
3930 Knowles Ave Suite 202  
Kensington, MD 20895  
(301) 942-8110

### SILVER SPRING

Colewood Centre  
10801 Lockwood Dr. Suite 260  
Silver Spring, MD 20901  
(301) 439-0300

**[www.MarylandFeet.com](http://www.MarylandFeet.com)**



# Feb. 7: 'A Night of Laughter'

by Hannette Allen

The Group's next show, "A Night of Laughter," directed by Irene Lunenfeld Shaulis, consists of humorous skits and funny bits.

The show is performed on Wednesday, Feb. 7, at 7:30 p.m. in the Clubhouse II auditorium.

The show features "Party Room Wars," about hilariously bickering game-players in a Leisure World party room.

Other comedy numbers are also included. This is one people won't want to miss!

## March 7 Meeting: Country Music

On Wednesday, March 7, Stan Jones presents a night of country music in Grand Ole Opry style.

The show is a chance for Fun and Fancy members to sing like Loretta Lynn, Johnny Cash, Willie Nelson and so many others.

Auditions are Saturday, Jan. 20, from 10 a.m.-noon in the Clubhouse II auditorium.

## April Musical Revue

"Broadway Melodies of the Sixties" has begun casting for its four performances in April.

Rehearsals begin Monday, Feb. 26. Ticket sale information is forthcoming.

The show is a companion piece to the Group's fall show, which looked joyfully at the 1960s through song and dance, according to show director Allan Okin.

The 1960s was an unforgettable decade. A plethora of musicals were produced on Broadway each year.

While ticket prices were far below what they are today, many great shows ran for more than 2,000 performances and broke box office records repeatedly.

Many good shows with melodic songs ran for one season or so, and were also

considered hits, though modest ones.

With its creative team, Fun and Fancy aims to bring Leisure World audiences show stoppers from many of these musicals, but only for four performances in April.

Audience members' memories will be tested as they once again see and hear musical numbers that Fun and Fancy wants to keep alive, as well as those that are worth hearing for the first time.

## Karaoke Night

Fun and Fancy rang in the New Year at its first monthly meeting on Jan. 3.

The audience that braved the frigid weather was not disappointed; attendees were treated to an evening of karaoke performed by a few people they knew but even more whom they didn't.

The audience loved it and sang along, and the performers had their

moments under the stress-free spotlights. No frills or fancy stuff – just full out fun!

The evening was so enjoyable that the Group is considering making it an annual January show.



## Mark C. Wimsatt Painting

Interior/Exterior

### Leisure World References

• Affordable Quality  
• Excellent References • Free Estimates

## WINTER DISCOUNTS!

# 301-828-6500

Serving Leisure World for over 30 years.

MHIC 10165

Bonded/Insured

## Leisure World News

OF MARYLAND



## "USE IT OR LOSE IT: STRATEGIES TO MAINTAIN YOUR BRAIN"

Presented by Terry Ullman,  
MSW, LCSW-C, LICSW,  
eldercare consultant and psychotherapist

## THURSDAY, FEBRUARY 8 10-11:30 A.M.

THE INTER-FAITH CHAPEL • FELLOWSHIP HALL  
3680 SOUTH LEISURE WORLD BLVD • SILVER SPRING, MD 20906

Are you experiencing more difficulty with your memory? Are you worried about developing Alzheimer's disease or a related dementia? Discover the steps you can take to improve and maintain your cognitive function and reduce your risk of developing memory impairment.

Free. RSVP to the Inter-Faith Chapel office  
at 301-598-5312 by Monday, February 5.





## Jan. 27: Local Quakers Speak at Meeting

by Juanita Sealy-Williams

On Saturday, Jan. 27, the Edmonson Historical Society holds its quarterly meeting at 11 a.m. in Clubhouse I. The guest speakers are Lowell Christy, Ph.D., and Linda Sepe, a Leisure World resident.

Christy has been a Quaker since the third grade, when his education in Quakerism began outside Philadelphia, Pennsylvania. It opened his eyes beyond his Midwest upbringing, exposing him to people from different cultures and countries.

Christy works with other

Quakers in Jordan on revitalizing Middle Eastern education. He has also conducted research on STEM education at High Point High School in Prince George's County. He has been clerk for a Meeting for Worship at one of Sandy Spring's outposts in Montgomery County for seven years.

He has worked with Myles Horton, head of the Highlander Research and Education Center in Knoxville, Tennessee. The Center developed strategies for civil rights in Appalachia, creating the literacy training programs for the South to over-

come barriers to voters' rights, which Andrew Young took over. Lowell helped found a Quaker school in Frederick County, Maryland, 20 years ago.

Sepe is an executive coach but has spent most of her life in urban education. Her experiences in urban education and program development for adult education have focused on designing and measuring the impact of new ways of learning.

Sepe is very active in revitalizing Quaker faith and practice. She was clerk of the Meeting for Worship in Yardley, Pennsylvania for many years. She serves

on the spiritual life committee of Friends Meeting School in Ijamsville, Maryland.

She's from upstate New York and was born into an Amish family. When she started raising her own children, she found a spiritual and activist home in Quakerism in Baltimore, Maryland. Sepe is an expert quilter and collects fabrics from around the world.

This program promises to be very interesting and all residents and friends are encouraged to attend. New members are welcome to join by bringing \$10 dues.

### ■ Book Club Network

## Feb. 21: New Technical Book Club Forming

by Verna Denny

Would you like to become more involved with the new technologies of the modern age? Do you find it easier to understand technical books when you're reading and discussing

them in a group rather than alone? If so, The Raspberry Readers is the book club for you.

The Group will read and learn about Raspberry Pi and the Raspbian software that goes with it, a phenomenon aimed at extending knowledge, capabilities and fun in

computer technology and usage. The first organizational meeting of The Raspberry Readers is Wednesday, Feb. 21, at 11 a.m. in Clubhouse I.

The Club, based on the Raspberry Pi, covers a range of interests and uses that apply directly

to the devices most seniors have access to: PCs, laptops, tablets and smartphones, as well as the software they most use: webpages, searches, email and word processing.

The goal of The Raspberry Readers is to read and discuss cutting-edge topics and to keep the Group aimed at what will be of use and interest to seniors.

The first meeting is a discussion, demonstration and reading suggestions on the topic, "how to build and use a really cheap, general purpose computer." Topics of future meetings will be based on the interests of the attendees, such as word processing, email, coding, graphics, math, games, robots, the internet, Raspberry Pi projects and more.

Raspberry Pi started in the U.K. to reach youngsters in grade and high schools and has since spread to the general population, with seniors notably underrepresented. The base hardware is a \$35 computer board of thousands of uses, documented in a growing number of books (63 in the Montgomery Public Library, alone).

Over 10,000,000 Raspberry Pis have been sold worldwide, and over 4,000 clubs established to promote its use. Visit ([www.raspberrypi.org](http://www.raspberrypi.org)) for more information.

For more information about the Raspberry Readers, contact Mel Haas at ([melhaas333@gmail.com](mailto:melhaas333@gmail.com)) or (240-833-8855).

# Come In From The Cold



## Paulette Tievy

LW Specialist  
Senior Real Estate Specialist

**Direct 301-651-3082**  
Office 301-681-0550  
[paulettetievy@gmail.com](mailto:paulettetievy@gmail.com)  
[www.myhomesdb.com/paulette](http://www.myhomesdb.com/paulette)

**It's not hard to fall in love with this fabulous community featuring a variety of homes and amenities to fit everyone's needs.**

I have properties for every budget starting with garden apartments for under \$100,000 to a single family home for over \$600,000. There are many choices in between including 1, 2, and 3 bedroom high rise and mid-rise condos, and patio homes with garages.  
Let me show you all LW has to offer.

**If you have a real estate question,  
I have the answer. Call me today!**

**Listing & Selling In LW Since 1989**



# Recycle, Reuse and Reduce

by Janice McLean

**L**W Green is seeking to increase support for recycling in Leisure World to help meet Montgomery County government's goal of recycling a minimum of 70 percent of all county waste by 2020.

According to the county's Department of Environmental Protection, as of December 2015, the county's overall recycling rate is 61 percent. However, the rate for multi-family solid waste recycling is 28 percent.

Leisure World is included in the latter group, so residents who strive to do more recycling could really help the county's success in multifamily neighborhoods.

One of LW Green's main activities for 2018 is to promote recycling, reducing and reusing. Residents can impact the environment by becoming more aware of how to reduce and reuse many products.

If every household in the U.S. used just one less 70-sheet roll of paper towels in a year, 544,000 trees would be saved each year, according to (thepaperlessproject.com), a grass-roots coalition of companies focused on transforming the way organizations use paper and electronic content.

Moreover, when households reduce their purchase of paper towels per week by one roll at approximately \$1 per roll, they could save \$52 per year.

LW Green member Radha Pillai has been a very active and long-time proponent of reducing the purchase of unnecessary products. She is looking forward to sharing information about her efforts at the LW Green meeting on Wednesday, Feb. 14.

Pillai has many interesting suggestions and recommendations for how to reduce unnecessary items in the home.

"I pay most of my bills online and all my financial statements come through email," Pillai said.

"I try to use baking soda and vinegar for most of my cleaning – for laundry, for pots and pans and dishes, and for general cleaning."

In the interest of harvesting and sharing communal wisdom, LW Green is asking residents to share their personal efforts to reduce, reuse and recycle.

Please send your suggestions to (marybeth.ardike@gmail.com). Please also include permission for the use of your name if your suggestion should appear in a future article.

## Meeting and Contact Information

All residents are invited to any LW Green meeting. The next meeting is on Wednesday, Jan. 24, at 2 p.m. in Clubhouse I.

For more information about LW Green, contact Janice McLean at (janicewmclean@gmail.com) or (301-847-9169).



*Hearing is one of the joys of life. Don't neglect it!*



From left: Kathryn A. Balestino-Estes, AuD., Cynthia Chrosniak, M.D., Jane Cooke, AuD., Nicholas Mehta, M.D., Heather Schwartzbauer, M.D.

**We have a team of audiology doctors and otolaryngology physicians who work together in two convenient locations to help you.**

## MEET OUR AUDIOLOGISTS

Dr. Jane Cooke and Dr. Kathryn Balestino-Estes

- Comprehensive and personalized evaluations
- The latest digital hearing instruments from leading manufacturers
- Solutions to fit your hearing needs, lifestyle, and budget
- Many insurance plans offer hearing aid benefits
- Financing Plans available

**We are conveniently located** in the Professional Building in the Leisure World Shopping Center above Sandy Spring Bank.

### LEISURE WORLD PLAZA

3801 International Drive  
Silver Spring, MD 20906,  
Suite 206

### PROFESSIONAL OFFICE BUILDING

18111 Prince Phillip Drive  
Olney, MD 20832, Suite 224

**CALL TODAY TO SCHEDULE AN APPOINTMENT!**

**301-774-0074**

**WWW.MONTGOMERYCOUNTYENT.COM**

**\$300 Off**

a pair of digital hearing aids

**\$400 Off**

a pair of digital hearing aids when you upgrade your existing aids



Drs. Chrosniak, Schwartzbauer and Mehta, M.D.

## JOEL'S EXECUTIVE CAR SERVICE

**301-438-9777**  
**301-980-4734 (cell)**

- Airport
- Trains
- Doctor Visits



**Get the Royal Treatment**  
Available 24 hours.

## LW TOP OFFICE PRODUCER

LEISURE WORLD PLAZA

**MAYNARD E. TUROW**

AGENT 19 YEARS...LISTINGS, REALES, NEW SALES

### THINKING OF SELLING?? Or Friends-Relatives Buying?

Living in and working in this community, I give you the attention to detail your property needs to sell successfully. I know the marketplace and can bring you excellent results.



(O) 301-598-7500



**FREE BROCHURES, COMPS, LAYOUTS, INFO**  
Direct: 301-518-3834  
maynardturow@yahoo.com  
Website: MaynardTurow.LNF.com



# Great Decisions in Foreign Policy

by Arthur N. Popper

Every day, the news is filled with descriptions of world events that affect all Americans. Many people are especially concerned this year because a new presidential administration is advancing a very different program of relationships with other nations than the U.S. has had in recent decades.

And, because of these changes, many are struggling to understand what is taking place and to put the changes into a national and global context.

To help residents better understand current trends in foreign policy, the Center for Lifelong Learning (CLL) presents the 2018 version of the Foreign Policy Association's Great Decisions series. The

course continues the popular series on foreign policy that has been given annually since 2010 by Leisure World resident David Frager.

The class will identify significant drivers of foreign policy events, such as sovereignty, resources, ethnicity, ideology, national interests, history and personalities, and the impact of these factors on the U.S.' ability to identify and influence the desired course of events.

The class may also discuss additional emergent topics that may be timely and which participants want to explore. Participants will be encouraged to share their experiences and knowledge. Indeed, lively and exciting discussions are a hallmark of Frager's classes!

Each topic is discussed in depth using FPA materials, as

well as experiences and materials brought to the seminars by participants. The FPA has also prepared a DVD featuring foreign policy experts from academia and the public sector that will be used to introduce each session.

Frager is a docent at the Smithsonian National Museum of American History. He taught information technology policy for three years at the National Defense University, during a career at the Department of Defense where he was involved with program management.

He led the highly regarded 2010-2017 discussions of Great Decisions and is the instructor for the "Building America: Personalities and Perspectives" series on American History for CLL. He is a member of Mutual 27's board



CLL course instructor David Frager.  
Photo by Fred Shapiro

of directors and the Leisure World Community Corporation board of directors.

For course registration details, see the Community Classes and Seminar Section of this edition.

For more information about all CLL courses and lectures, see ([www.cllmd.com](http://www.cllmd.com)).

## ■ Jewish Discussion Group

# Jan. 28: Group Discusses Current Events

by Jerome "Jerry" Cohen

The Jewish Discussion Group meets on the fourth Sunday of the month from 10:30 a.m.-noon in Clubhouse II. The Group's next meeting is Sunday, Jan. 28.

Group members discuss the many interesting and consequential subjects and events that occur domestically and worldwide and impact the greater Jewish community and diaspora.

The group's monthly meetings are moderated in a manner that allows and encourages everyone who wishes to express their viewpoint on the scheduled contemporary discussion subject to do so. Additionally, no one individual is allowed to monopolize the floor as time limits are in effect.

Topics of interest recently discussed include President Trump's recognition of Jerusalem as the capital of Israel and the ramifications thereof, and the

significant rise of anti-Semitism in Canada and elsewhere.

Discussions generate many thoughtful opinions and insights that help to enrich and expand the understanding of all who participate in them.

At a past discussion, Phil Zenchoff presented a brief but interesting overview of the technological advancements in Israeli tanks and munitions. "Star Wars" type technology seems to be rapidly developing in Israel and is enabling the Israel Defense

Forces to gain greater military strength in the Middle East.

Participants who would like to present short reports or presentations to the group are encouraged to schedule them in advance with the moderator.

The Jewish Discussion Group is free and open to all residents. There are no meetings in July and August. Please arrive promptly to sign in. For additional information, contact Jerry Cohen at (240-970-5024) or ([jcohen@jccbb.com](mailto:jcohen@jccbb.com)).

The Group looks forward to seeing many new and returning faces in the coming months!

## Personal Care Services In The Comfort Of Your Home



- Household chores
- Medication reminding
- Daily living and companionship
- Meal planning, preparation and monitoring of eating habits
- Overseeing activities, such as walking, to minimize the risk of accidents
- Shopping for groceries, with or without client
- Bathing and grooming and general personal hygiene
- Help with planning and making decisions
- Nursing services and many more!

Family Owned & Operated  
Serving Montgomery County



Call for a Free Consultation and Assessment • 301.717.2212 • [www.bestseniorcare.us](http://www.bestseniorcare.us)

## Chairworks Plus Furniture Service

- Antique Restoration
- Furniture Repair
- Chair Gluing

Serving the  
Leisure World Community  
for over 30 years



Rick Sussman

301-502-0018  
410-795-9147



# Brunches, Seminars and Services

by Jonas Weiss

On Sunday, Jan. 21, Susan Hogan, consumer investigative reporter for NBC4 (WRC Washington), is the featured speaker at the Jewish Residents of Leisure World (JRLW) brunch.

Hogan works with a team of specialized producers from an NBC Responds campaign to investigate consumer complaints and to recoup the money due to consumers.

The brunch is at 10 a.m. in Clubhouse I. Attendance at the door may be available with checks of \$13, payable to JRLW.

## February Brunch

The next brunch is on Sunday, Feb. 18, with Karen Batshaw, who discusses the Jews of Greece, the little known “orphans” of the Holocaust.



Very few people know that the percentage of Jews annihilated in Greece was the highest of any European country. Batshaw will also describe the efforts of

the Greek clergy to stand up to the Nazis.

The cost for brunches has increased; the new fee is \$12 per person. Send checks, payable to JRLW, to Jerry Gordon at (15311 Beaverbrook Ct., Apt. 3A, Silver Spring, MD 20906) by Wednesday,

Feb. 14. Admission at the door, if available, is \$15 starting in February.

## Seminar

The JRLW education committee is bringing back the popular Dr. Michael Siegel to conclude his seminar on recent U.S. presidents, with evaluations of Obama and Trump. His seminars are on Friday, March 9 and 23, at 10 a.m., with details forthcoming.

## Religious Services

Rabbi Fink conducts a Conservative service on Friday, Feb. 2, at 7:30 p.m. in The Inter-Faith Chapel, followed by socialization and refreshments at an Oneg.

Rabbi Moshe Samber leads abbreviated religious services

on Saturday, Jan. 20 and 27, at 9:15 a.m. in Clubhouse II, with discussions of the Torah portion and rabbinical writings.

Purim is on Thursday, March 1, and a religious service is planned, with details forthcoming.

## Donations

For the Torah maintenance fund, send checks, payable to JRLW, (minimum \$25) to Carol Wendkos at (14805 Pennfield Cir., Apt. 212). Janet Lazar at (15311 Beaverbrook Ct., Apt. 1B) takes care of donations for prayer books (\$25 minimum).

Send donations for Kiddush or an Oneg (\$25 minimum for either), or Yiskor or general Tzedukah to Susan Weiss at (3739 Glen Eagles Dr., Silver Spring, MD 20906).

## ■ Jewish War Veterans Charles B. Krieger Post 567

# Program Addresses Changing Alliances in the Middle East

by Fred Shapiro

With concern about the changing political dynamic in the Middle East, Post 567 presents a program and series of workshops to address the subject.

Resident Philip Wendkos conducts the program on Tuesday, March 20, at 2 p.m. in Clubhouse I, with workshops scheduled for the second Fridays in February, March and April at 10 a.m. in Clubhouse II.

While the March 20 program is free, residents are requested to register in the Clubhouse I E&R office beginning Tuesday, Jan. 23, at 8:30 a.m. to assure adequate seating.

“With the changing alliances in the Middle East with respect to Israel and the recognition of Jerusalem as the capital of Israel by the

U.S. and other countries, there is much to consider both from a historical and current perspective,” Wendkos said.

Wendkos is well versed in Middle East politics. From 1982 to 1986, he was a translator and interpreter of Arabic and Hebrew for U.S. government agencies in Atlanta, Georgia, and then served from 1971 to 2005 in a similar role for the Department of Justice.



Phil Wendkos. Photo by Fred Shapiro

He has degrees from Yeshiva University, Hunter College of CUNY and a doctorate from Dropsie College, now affiliated with the University of Pennsylvania.

He has served as an instructor and director in a number of Hebrew schools, as well as instructor of Arabic at Georgia State University, Georgia Tech and North Fulton High School in Atlanta, Georgia.

**EXPOSE YOUR PROPERTY TO TECH SAVVY BUYERS.**

Powered by Long & Foster®

When scanned on a mobile device, a QR (Quick Response) code allows buyers to immediately access unique property information on any Long & Foster listing. QR codes are available on LongandFoster.com for every property listed with Long & Foster.

*Buying or Selling.  
Get a Real Edge in Real Estate.  
Contact a Long & Foster Agent today.*

Leisure World Plaza  
3836 International Drive  
Silver Spring, MD 20906  
301-598-7500

CELEBRATING 50 YEARS

**RECYCLING REMINDER**

**We Do Recycle Cardboard!**

From the Sanitation Department





# Stan M

Authorized Leis

**Weichert**  
REALTORS

## #1 In LISTINGS and SALES

### 2017 Was Another



**Royal Aintree Patio Home - \$374,900**  
2 BR, 2 FB, 1346 sq. ft. New carpet, wood floor in living and dining rooms, updated kitchen, sunroom, 1 car garage.



**"S" Model - Fairways - \$269,000**  
2 BR, 2 BA, den/library, 1460 sq. ft. Freshly painted and garage space included.



**"Raleigh" Model - \$89,000**  
1 BR, 1 FB, 990 sq. ft. Freshly painted, enclosed sunroom.



**"M" Fairways - \$279,000**  
2 BR, 2 FB, 1530 sq. ft. Rough for half bath, golf course view, garage space.



**"F" Model - Greens - \$159,000**  
2 BR, 2 BA, 1115 sq. ft. First floor, freshly painted and garage space included.



**"H" Model - Greens - \$215,000**  
2 BR, 2 FB, 1210 sq. ft. Freshly painted, new carpet, tiled bathrooms, golf course view, garage space included.



**"Capri" Model - \$189,000**  
3 BR, 2 FB, 1415 sq. ft. Freshly painted, carport, balcony, plush carpet, eat-in kitchen



**"L" Model - Greens - \$310,000**  
3 BR, 2 FB, 1630 sq. ft. Freshly painted, new carpet, golf course view, separate storage room, garage space included.



**"K" Model - Greens - \$205,000**  
2 BR, 2 FB, den/library, 1480 sq. ft. Freshly painted, new carpet, garage space.

## Experience for Yourself Why Stan is #1 in Leisure World

Office: 301-681-0550 • Email: stanmoffson@leisureworld.com



# Stan Moffson

## Leisure World® Specialist

# LES In Leisure World®



## Another Fantastic Year!



**"L" Mdl-Overlook-\$520,000**  
3 BR, 2.5 BA, 1,735 sq.ft. + Gar.



**"FF" Mdl-Overlook-\$315,000**  
2 BR, 2 FB, 1,320 sq.ft.



**"EE" Overlook-\$251,000**  
2 BR, 2 FB, 1,242 sf



**"C" Overlook-\$239,000**  
2 BR, 2 FB, 1,090 sf



**"L" Mdl-Overlook-\$490,000**  
3 BR, 2.5 BA, 1,735 sq.ft. + Gar.



**"G" Mdl-Turnberry-\$315,000**  
2 BR, 2 FB, 1,446 sq.ft.



**"JJ" Mdl-Overlook-\$380,000**  
3 BR, 2 BA, 1,560 sq.ft.



**"G" Mdl-Turnberry-\$315,000**  
2 BR+den, 2 FB, 1,446 sq.ft. +Gar.



**"H" Mdl-Villa Cortese-\$350,000**  
3 BR, 2.5 BA, 1,633 sq.ft. + garage



**"EE" Mdl-Turnberry-\$262,000**  
2 BR, 2 FB, 1,379 sq.ft. + Garage

**"Cabot" Model-\$235,000**  
3 BR, 2 FB, 1,193 sf

**"K" Greens-\$226,000**  
2 BR, 2 FB, 1,520 sf + gar.

**"H" Greens-\$205,000**  
2 BR, 2 FB, 1,210 sf + gar.

**"K" Greens-\$205,000**  
2 BR, 2 FB, 1,520 sf

**"GG" Fairways-\$195,000**  
2 BR, 2 FB, 1,195 sf

**"C" Vantage-\$190,000**  
2 BR, 2 FB, 1,090 sf

**"B" Overlook-\$178,000**  
2 BR, 2 FB, 1,035 sf

**"GG" Greens-\$167,000**  
2 BR, 2 FB, 1,210 sf

**"Berkeley" Model-\$165,000**  
2 BR, 1 FB, 2 HB, 1,600 sf

**"B" Greens-\$164,900**  
2 BR, 2 FB, 980 sf

**"E" Greens-\$159,000**  
2 BR, 2 FB, 990 sf

**"E" Fairways-\$157,000**  
2 BR, 2 FB, 980 sf

**"A" Overlook-\$155,000**  
1 BR, 1.5 BA, 980 sf

**"E" Fairways-\$150,000**  
2 BR, 2 BA, 980 sf

**"Berkeley" Mdl-\$149,000**  
2 BR, 1 FB, 2 HB, 1,600 sf

**"Berkeley" Mdl-\$139,000**  
2 BR, 1 FB, 2 HB, 1,600 sf

**"Cordoba" Model-\$95,000**  
1 BR, 1 FB, 1 HB, 946 sf

**"Calvert" Model-\$85,000**  
2 BR, 1 FB, 1,035 sf

**"Burgess" Model-\$68,000**  
1 BR, 1 FB, 800 sf

**"Burgess" Model-\$64,000**  
1 BR, 1 FB, 800 sf

**World® Call 301-928-3463 and List with Stan Now!**

**h38@gmail.com • Web: www.stanmoffson.com**



# Feb. 25: Annual Brunch and Fashion Show

by Barbara Eisen

**H**adassah invites all residents to its annual brunch and fashion show on Sunday, Feb. 25, at 10 a.m. in the Clubhouse I Crystal Ballroom.

The event features a breakfast buffet with open seating, followed by a fashion show provided by Taylor Marie Apparel. At the end of the event, attendees can browse the racks of clothing (in many sizes) and jewelry items that Taylor Marie Apparel will have set up in Clubhouse I. Taylor Marie will donate a percentage of all items purchased to Hadassah.

The cost of the event is \$18 per person. Send checks, payable to Hadassah, to Linda Silverstein at (16 Jaystone Ct., Silver Spring, MD 20905) by Monday, Feb. 19. Checks are not accepted at the door. For

questions, contact Linda at (301-879-2887) or (linjoy357@gmail.com).

**Judaic Studies Group**

The next meeting of the Judaic Studies Group is on Monday, Feb. 19, at 1:30 p.m. in Clubhouse I, shortly before the Festival of Purim.

While many are familiar with the Purim story and how Esther and Mordecai rescued the Jewish people from the evil Haman, what is really known about the background and setting of the story? Where is Shushan, and is it a real place? Who is or was Ahasuerus? When did the events take place? What is the connection between the names Esther and Hadassah?

Is the story fact or allegory, or perhaps a little of both – a real megillah. All are welcome to join the discussion. Bring questions and comments.

Contact Peri Schuyler at (301-869-2968) or (perislaptop@aol.com) for further information.

**Pin Sale**

Hadassah continues selling unique pins, handmade by resident fabric artist Bobbi Gorban. The pins are \$18. Order forms are available at each Hadassah meeting or pick one up in the Hadassah mail slot at the Clubhouse I E&R office I. For questions, contact Judy Rumerman at (judyrumerman@gmail.com) or (301-680-0850). You don't have to be a member to buy a pin.

**Greeting Cards**

Elaine Schenberg and Jan Bloom sell Hadassah greeting cards. The prices are \$2.50 each or five for \$10. Cards are displayed and sold at every Hadassah meeting. Call Elaine at (301-598-0079) or Jan at (301-593-7720) to buy cards between meetings.

**Youth Project**

Larelda Gruber (301-598-5922) is chair of Youth Aliyah/Children at Risk. The project helps disadvantaged children in Israel. The goal is to create a circle of \$1,000, made by individual contributions of \$40. Send your donations to Larelda at (3200 N. Leisure World Blvd. #201, Silver Spring, MD 20906).

**General Information**

Hadassah sponsors many activities to further the worthwhile projects it supports in medical, educational, and social programs in Israel and the U.S.

If interested in knowing more about Hadassah, contact one of its membership vice presidents: Ruth Temin at (301-288-7387) or (teminar@comcast.net), or Lois Fields at (301-585-9804) or (loisfields2@earthlink.net) or Natalie Rosen at (301-279-5640) or (bnrosen@comcast.net).

## ■ **NA'AMAT RBZ Club**

# Feb. 20: Executive Board Welcomes All Members

by Carole Mund

**N**A'AMAT is a charitable organization dedicated to help NA'AMAT Israel provide educational daycare, vocational training, legal aid for women, services and assistance for new

immigrants and centers for the prevention and treatment of domestic violence. It was formally known as Pioneer Women.

By getting involved, volunteers have the opportunity to meet new friends and connect with

an organization that makes a difference in the lives of so many. Attend the Club's next executive board meeting on Tuesday, Feb. 20, at 10:30 a.m. in Clubhouse I, to become active in the Club and make a difference.

socialization with friends and neighbors, but also serve as fundraisers to support the many programs NA'AMAT provides.

Donor credit is simply money attributed to each member over the cost for participating in activities sponsored by NA'AMAT. Contact donor credit chairperson Theda Rosenblum at (301-598-9105) for any questions about your donor status.

**Tzedakah**

Tzedakah is the custom of donating loose change to charity each Sabbath. NA'AMAT RBZ has little puskie boxes to encourage members to save and donate. Every penny counts in supporting the many programs NA'AMAT sponsors in servicing women and children.

Carol Milwit coordinates the collection and replacement of the tzedakah boxes. Just drop your change or maybe your mah jongg winnings into the box and Carol will gladly collect the box and replace it with a new one. Full donor credit is given. Contact Carol at (301-288-7534) for more information.

**Save the Dates**

March 7 – Open Meeting  
April 18 – Spiritual Adoption Luncheon  
May 10 – Donor Luncheon at Norbeck Country Club

**Trips**

A cruise to Bermuda is planned for April. Check the Club Trips section of this publication for more information.

For more information about NA'AMAT RBZ Club, contact co-presidents: Trudy Stone at (301-438-0016) or Gladys Blank at (301-438-9666). For tribute cards, contact Linda Schoolnick at (301-681-1076).

**Donor Credit**

The many activities NA'AMAT enjoys not only provide opportunities for



## Jews and Chocolate: A Love Story

Join us for a sweet event with special guest  
**Sheilah Kaufman**

### Thursday, February 8 | 2 - 3:30 p.m.

Ring House, 1801 E. Jefferson St., Rockville, MD 20852

Come and meet **Sheilah Kaufman**, award-winning author of 26 cookbooks, cooking teacher, food editor, and culinary lecturer, as she tells the story of the History of the Jews and Chocolate. Who knew there was a Jewish history here! Learn valuable information about using and cooking with chocolate, and enjoy a chocolate tasting. **Stay for a chocolate buffet!**

*The author will have several cookbooks available for sale and will be happy to sign them for you.*

**RSVP by February 5th**  
to Jill Berkman at [berkman@ceslc.org](mailto:berkman@ceslc.org) or **301-816-5052**



Charles E. Smith Life Communities



# Feb. 19: Getting Ready for This Year's Elections

by Fred Seelman

The next meeting of the Republican Club is on Monday, Feb. 19 at 1:30 p.m. in Clubhouse I.

2018 is an election year, and the Club is focused on the county and state's two big elections: the Primary Election on Tuesday, June 26, and the General Election on Tuesday, Nov. 6. The Club will have candidates speak regularly at its meetings throughout the year.

However, the Club does more for the Republican Party than promote its candidates at meetings. The Club is seeking Republicans to work on these two election days as election judges at the three Leisure World polling sites: Clubhouse I, Clubhouse II and The Inter-Faith Chapel.

Election judges are paid for their work. For more infor-

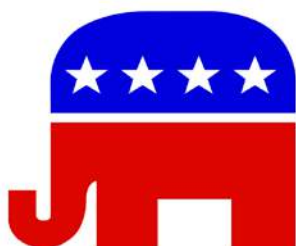
mation about working as an election judge, contact the Montgomery County Board of Elections at (240-777-8500) or (240-777-8533), or (elections@montgomerycounty.md.gov).

Residents can also write for more information at (Montgomery County Board of Elections, P.O. Box 4333, Rockville, MD 20849).

The Club also staffs precinct entrances with volunteers on Election Day to help voters before they cast their ballot. Club members encourage individual Republicans to run for public office.

All residents are welcome to join the Club in these activities and more.

Come also to the February meeting for annual Club elections. Contact Club president Fred Seelman or vice president Ray Spieler if interested in becoming a Club candidate.



Send comments or questions about these or any other Club matters and/or offers to volunteer to Club president Fred Seelman at (fseelman@gmail.com).

com) or first vice president Ray Spieler at (301-460-3563).

Join us on Feb. 19 at 1:30 p.m. for another quality event. And enjoy our refreshments.

## Wills, Wealth Planning & Trusts



**Luann Battersby**  
Leisure World neighbor  
3510 Chiswick Ct

Phone: 301-518-0423

Email:

Luann\_Battersby@comcast.net

Housecall: No charge!

www.battersbylawoffice.com

Simple will:

\$175/person; \$330/couple

Living will/medical directive \$80

Financial power of attorney \$90

Probate: flat fee or hourly, not a percentage of estate.

Estate and tax planning. I also assist clients in other related matters when they need my help.

**18111**

- ✓ Cutting-edge Microscope-centered Dentistry
- ✓ Dentures
- ✓ Gum Treatment
- ✓ Root Canals
- ✓ Sedation Dentistry
- ✓ Bonding
- ✓ Extractions
- ✓ Bleaching
- ✓ Veneers

We Cater to Cowards • Same-day Emergencies • Evening Hours  
Will File Forms for All PPO Insurance Carriers

*Look and feel your best!*



**COMPREHENSIVE FAMILY  
& COSMETIC DENTISTRY**

**\$50 off your first visit**

Not valid with third party plans, new patients only.

Located at MedStar Montgomery Medical Center  
18111 Prince Philip Dr.  
Suite T-17  
Olney, MD 20832

**T: 301-774-7887 • www.OlneyDental.com**



# Members Invited to Participate in Board of Directors Meetings

by Elizabeth Brooks-Evans

Each month, the Going It Alone Club (GIAC) board of directors meets to discuss plans for future trips and Club activities.

Club members are invited to participate in these meetings to share their questions, ideas and desires or just to find out what's in store for the future.

Meetings are held on the first Thursday of each month from 3-4 p.m. in Clubhouse II. Members are welcome to renew their dues and sign up for trips before the meetings begin.

## Armchair Travel

Every Saturday, GIAC members enjoying travel videos in a friendly, relaxing atmosphere from 2-2:30 p.m. with Rick Steves, the well-known expert travel guide.

On Saturday, Jan. 20, viewers will

be taken to the Swiss Alps, Paris and London, where Steves will advise them on finding desirable accommodations, from the cheapest hostels to reasonable bed and breakfasts to expensive resorts.

On Saturday, Jan. 27, travel along with Steves and his small crew to discover their secrets to bringing viewers fun and excitement by seamlessly filming shows across Europe.

## Games

The games committee has been busy purging old prizes and replacing them with new and nearly new items for Bingo games, which are played on the second and fourth Saturday of the month from 2:30-4 p.m.

Scrabble will be included with bridge and Rummikub during Saturday Afternoon Live (SAL) beginning at 2:30 p.m. Those interested in playing these games are welcome to come and bring a potential partner (if not a member, he or she can quickly sign up on the spot for a \$7 annual membership fee).

## Trips

GIAC sponsors the following assortment of trips in 2018, open to all members, residents and guests:

- March 22 – Harrington Casino, “Where Winners Play,” in Kent County, Delaware

- May 22 – “High Tea” at Camellia’s Sin Tea Parlor, including soup, salad, sandwiches and scones, and side trips to Meadowbrooke Gourds in Carlisle, Pennsylvania, and a stop at Baugher’s Farm Market in Westminster, Maryland (40 person limit)
- July 24 – “Jesus” at Sight and Sound Theater in Pennsylvania, with a smorgasbord lunch at the Bird-In-Hand Restaurant
- June 4-June 8 – “Cape Cod and the Islands,” an exciting five-day trip to Martha’s Vineyard, guided tours of Hyannis and Sandwich, Provincetown and Chatham, a visit to the John F. Kennedy Presidential Library and Museum, and the Eastham Windmill

For more information about trips, contact Joe Parker at (301-598-3457) or Sylvia Pachenker at (301-598-5325). See the Club Trips section of this publication for more details.

## Membership

Those wishing to sign up for membership and/or trips can do so during SAL from 1:30-3 p.m. in Clubhouse II when a representative can provide information and answer questions about the Club and its activities.

For more information, call club president Marion Callaghan at (301-598-6779).

**In-Home or Office  
Computer Help**

PC - Mac - Tablet - Smartphone



Hardware - Software - Network  
Wireless Troubleshooting  
Virus - Spyware Removal  
Data Recovery

**301-495-3390**  
Press "2" if urgent

**Bob Mann**  
watzanetwork.com  
helpme@watzanetwork.com



**Watza?** Serving the Leisure World community 10+ years  
5,000+ customer appointments!

MasterCard VISA • Insured

WatzaNetwork? is a service of Watza, LLC

## ■ Rossmoor Woman's Club

# Feb. 14: A 'Heartfelt' Tea

by Marcia L. Elbrand

On Valentine's Day, Wednesday, Feb. 14, Rossmoor Woman's Club (RWC) holds its annual afternoon tea at 2 p.m. in Clubhouse I.

“This will be a fine opportunity for the nearly three dozen new members who have joined in recent months to get to know members who have volunteered with this group for years,” said club president Aggie Eastham.

In addition to an assortment of fine teas, the menu includes tea sandwiches, freshly baked scones with strawberry preserves, cookies, brownies and mini dessert pastries.

RWC vice president Noreen Potter and membership chairperson Arlene Siller co-chair the event.

Mail checks for \$20, payable to Rossmoor Woman's Club, to Carolyn

Thompson at (15000 Pennfield Cir., #202, Silver Spring, MD 20906).

Checks are due no later than Saturday, Feb. 10. No refunds are available after that date.

While the majority of members are residents, RWC also welcomes non-resident friends to join and help with RWC fund-raising activities for college scholarships, local hospices, the Harmony Hills Head Start class, Fireside Forum and other good causes.

Those interested in joining are encouraged to contact Arlene Siller at (abs929@yahoo.com) for a membership brochure.

## Take a Look

Photos by Ingrid Masi, showing recent Rossmoor Woman's Club events, are available at the RWC's website at (<https://sites.google.com/site/rossmoorwomansclub/home>).



# Jan. 20: Two Potlucks and a Meeting

by Mike LaPoint and Pat Ritter

The Alliance's board and members eagerly look forward to 2018 with continued enthusiasm and determination to provide educational and social opportunities, fellowship and networking within Leisure World and the larger LGBT community.

Continuing in 2018, the Alliance hosts a weekly game night on Wednesdays at 6:30 p.m. in Clubhouse II. All are invited to join the group for fun-filled evenings of games and munchies. Bring your favorite game and a snack to share.

## Potlucks and Meeting

The Alliance hosts its monthly potluck brunch and meeting on Saturday, Jan. 20, at noon in Clubhouse II. Join in the potluck brunch by bringing your favorite dish to

share, and enjoy fellowship and an update on upcoming events.

The monthly meetings are a great opportunity to learn more about the Alliance and to meet some of its members and officers. At this month's meeting, the Alliance discusses its upcoming election of officers, which takes place in March.

Also on Saturday, Jan. 20, the Alliance holds a dessert/appetizer potluck and presentation at 6 p.m. Personal lifestyle coach Jeff Hughes presents "Forget the Fountain of Youth: the Real "Secret" to Living a Longer, Happier and Healthier Life."

Hughes shares his compelling insights and firsthand experience on using age-old wisdom from extraordinary cultures from around the world to live a fuller and more satisfying life.

Join the Alliance for this informative, inspiring and lively evening, and enjoy fellowship and great food with friends. For location and further details, contact (lwlgbt@gmail.com).

## Movie Screening

On Monday, Jan. 22, at 1:30 p.m., Alliance members carpool to Sibley Memorial Hospital for a screening of "A Place to Live: The Story of Triangle Square." Iona Senior Services, Sibley Memorial Hospital and the Palisades Village sponsor the screening as another in their series of events for older LGBTQ adults.

The documentary chronicles the journey of seven brave individuals as they attempt to secure a home in Triangle Square, Hollywood, the nation's first affordable housing facility for LGBTQ older adults. The film is a moving exploration of

the individuals' personal stories and the journey that brought them to the housing facility.

If interested in carpooling to Sibley Memorial Hospital with the Group, please email (lwlgbt@gmail.com).

## Kicking Off the New Year

The Alliance kicked off the New Year on Jan. 7, with its post-holiday dinner and social at the home of one of its members. Attendees were treated to a delicious meal, an old-fashioned "Yankee gift exchange," a dessert buffet and warm hospitality. The evening was a great chance to kick back and enjoy the fellowship of friends, old and new, in a relaxed and comfortable setting.

To learn more about the Alliance, email (lwlgbt@gmail.com), or attend the next monthly potluck meeting on Saturday, Jan. 20, at noon in Clubhouse II.

## ■ Leisure World Association for African American Culture (LWAAAC)

# Feb. 28: 'The Great Society' at Arena Stage

by Patricia Means

All residents, family and friends are invited to attend the play, "The Great Society," on Wednesday, Feb. 28, at noon at Arena Stage in Washington, D.C.

Tickets, \$60, must be purchased by Saturday, Jan. 20. On the day of the event, the Eyre bus departs from Clubhouse II at 10:30 a.m. (arrive at 10 a.m. for boarding), and tickets will be distributed en

route to Arena Stage. For more information, see the Club Trips section of this publication.

## Membership

Dues for new membership is \$10 and covers Jan. 1- June 30, 2018. The dues for renewing membership remain \$20. Payment is made by checks only (payable to LWAAAC) and may be

submitted at meetings, placed in the LWAAAC mail slot in the Clubhouse I E&R office, or mailed to (LWAAAC, PO Box 12316, Silver Spring, MD 20908).

## The Drumbeat

The January issue of the Drumbeat will be emailed to members. Members who have not provided an email address

to the Association are asked to send it to (lwaaac1@gmail.com). Members who do not have email must request a paper copy of The Drumbeat, which will be mailed to them.

## Celebrations II

It's almost here. Many thanks to everyone who provided profiles and contributions.

## Income Tax Preparation



New Client Discount of 15%  
Home Visits if Necessary

Joseph M. Kissell  
CPA, ChFC, MSA  
Certified Public Accountant

(301) 460-0434

Family Owned and Operated

Serving LW For Over 30 Years



I saved \$150  
on my glasses at Eyeland!

**\$150 OFF**  
a pair of  
prescription glasses

**eyeland**

**301-871-6454**

13808 Georgia Ave. 1 mile south of LW.



# Comedy Club and Ancient Greek Humor Are Much Alike

by Al Karr

One might think that joking at the Comedy and Humor Club is vastly different than back in the days of Ancient Greece, but not so much.

Scholars divide the old stuff into three periods, starting with the emergence of Greek humor in 6 B.C. They call it old comedy, middle comedy and new comedy.

Old comedy refers to plays written in the 5th century B.C., most by Aristophanes. He once penned, “Like politicians’ words I’d rise. In gaseous vapour to the skies.” (Act One, Scene One, “The Wasps”)

Sound familiar? As author Marc Cartwright wrote in 2013 (that’s A.D.), Aristophanes’ works, with their pungent

political satire and abundance of sexual and scatological innuendo, lampooned important people and institutions, such as in his buffoonish portrayal of Socrates in “The Clouds,” and in his racy, anti-war farce “Lysistrata.”

Middle comedy was a time when mythological burlesque and stock comic characters reigned, like revelers, philosophers, boastful soldiers and conceited cooks, to name a few of those cited by Cartwright.

Then came new comedy, from the death of Alexander the Great in 323 B.C. until about 260 B.C., which was comparable to situational comedy, like “Seinfeld,” and comedy of manners.

The most successful comedy writer of the era was Menander, who wrote about a mix of ordi-

nary persons, like the angry, old man, the parent who seems bent on depriving his son or daughter from wedded happiness and the prostitute who hid her heart of gold behind “a face of fierce commercialism.”

Residents will recognize many of these themes, and others, when they join the Club at its weekly Tuesday meeting from 1:30-3 p.m. in Clubhouse II.

Presenting such standup comedy (a 19th century American contribution) at the Club’s last meeting of 2017 were Josh Justin, John Lass, Herb Hodes, vice president Gloria Horwitz, Fred Firnbacher, president Sam Hack and Al Karr.

Here are some laughter-oriented snippets from those contributions:

Josh – A Jewish newcomer in town visits an orthodox

synagogue and then a conservative synagogue, where he asks each rabbi to provide a mezuzah (a small case placed over the doorposts of Jewish homes, containing a parchment inscribed by words of God, in Hebrew) for the man’s Lamborghini. The answer: Certainly not! So he moves to a reform synagogue, asking if the rabbi knows what a Lamborghini is. The rabbi says, “Of course; it’s a sports car, but what’s a mezuzah?”

Herb – I heard that 417 people got married in the U.S. last year. Shouldn’t that end in an even number?

Gloria – A woman told a psychiatrist that her husband thinks he’s a refrigerator. Trouble is, he sleeps with his mouth open, and the light keeps her awake.

## ■ Writers of Leisure World

# An Age Gap, Family Times and Looking Ahead

by Gladys Blank

At the group’s last meeting in December, several interesting articles were submitted.

In “The Gap,” Radha Pillai described babysitting her 12-year-old granddaughter, who informed her that she was not babysitting; she was keeping her company.

Their time together was an eye-opener for Pillai; her granddaughter was at a loss to understand how her grandmother could have lived without the many conveniences that the internet, computer, cell phone and TV provide.

Jane Hawes amused the group by recalling her son’s determination to have ketchup with his hot dog at a Friendly’s

restaurant.

“Family Portraits” by Verna Denny was an absorbing and thought-provoking essay that recalled her childhood growing up in Harlem, and the trials and tribulations of her various family members.

Grace Cooper recited another of her thoughtful blank prose pieces, this one about a young child huddling against a

building trying to find some warmth, with an outstretched hand looking for a penny.

Gladys Blank wrote about going through her 2017 calendar and recalling some of the happy events of the year – trips to art museums, concerts and visits with family, as well as the passing of old friends. Nevertheless, she looks forward hopefully to 2018.

Meetings are on the first and third Thursday of the month at 11 a.m. in Clubhouse I. All residents are welcome to attend.

## Services for Seniors

### Activities of Daily Living

- Bathing
- Dressing
- Lifting
- Transferring
- Personal Care & Hygiene

### Support Services

- Companionship
- Meal Preparation
- Medication Reminder
- Physical Therapy
- Light Housekeeping
- Transportation to Appointments

## What makes ElderCaring different?

- ☛ 2 hour minimum for services – most companies require 4 hours as a minimum
- ☛ All caregivers are professionally trained nursing assistants
- ☛ The owner of ElderCaring personally meets with you to discuss your needs
- ☛ All caregivers are fluent in English
- ☛ Personal choice in selection of every caregiver
- ☛ Licensed, Bonded, Insured
- ☛ 24 Hours Service - 7 Days a Week

Would you like to receive a brochure in the mail, or set up an appointment?



*ElderCaring*

Call 301-949-0060  
www.eldercaring2.com

“The quality of care you would want for your parents.”

**WE BUY VINTAGE**  
Speakers, Amps, LPs, Turntables, etc.

We come to you when possible  
**301.881.1327**



# Learn About iOS Accessibility

by Brent Malcolm

For many years Apple has gone to great lengths to assist those who have accessibility issues of almost every type.

iOS11 includes settings that benefit people who have visual or hearing issues as well as motor impairment. Since they are a relatively small segment of the general population (although a large part of Leisure World's population), most people don't even

bother to look at the Accessibility section of the Settings.

But controls can simplify the use of an iDevice for any user, whether or not he or she has a specific accessibility issue. All of the settings described below are found in Settings > General > Accessibility.

To adjust text size, tap Text Size and adjust the slider to the setting that is comfortable to read easily. To make all text bold, restart the device. Turn on the Bold Text switch and click Continue to restart the device and enable bold text.

To increase the size of the screen display, tap Zoom. Once there, turn on Zoom and then examine all the additional zoom adjustments that are possible. The page includes detailed notes on how to manage all of these adjustments.

To have text read to you, tap Speech and turn on Speak Selection. Scroll down to the Speaking Rate slider and adjust the reader's pace. Highlight text; then tap Speak.

Some of iOS11's display elements are semi-transparent and difficult to read. Select Increase Contrast and turn on Reduce Transparency and Darken Colors.

If faced with using Siri in a quiet environment, users can type their query. Touch Siri, and then turn on Type to Siri. Remember to turn this off when you want to return to voice-operated Siri.

Magnifier allows users to use their device's camera as a magnifying glass. To enable it, touch Magnifier, and then Turn on Magnifier. Triple-click the Home button, and Magnifier will start, with the screen acting as the magnifying glass.

This is just a small sample of all the adjustments available under Accessibility. Take a moment to look through

all the categories and perhaps you'll find another setting that will make your iDevice more useful to you.

## Club News

At the Tuesday, Jan. 23, Club meeting, Ron Masi gives a presentation on using the iPhone camera. He'll cover 18 settings that are easy to use but are unfamiliar to many, including new features that iOS11 added. Join the Club on Jan. 23 at 10 a.m. in Clubhouse II. Bring your iPhone and/or iPad.

More Apple Club information is available at (<http://mac.computerctr.org>). There, users will find information on Club meetings and clinics, past LW News articles, information on past presentations and more.

## Today's Tip – Editing Your History on Amazon

Amazon automatically tracks the products a user browses and compiles

a visual list on the account's homepage, in case the user is inspired to follow through with a purchase on a return visit.

Users who find this sort of thing more creepy than helpful—or who share a computer and would rather not have others see their shopping whims – can disable the tracking.

Log in to the account. Click the Browsing History link and then click on Manage History. In the new window, click on "Remove all items" and then turn Browsing History off. Remember that just because a user removed the information from the account does not mean Amazon doesn't continue to compile it.

If a user clears their browser cookies as part of a maintenance or troubleshooting step, Amazon will start tracking the user's window-shopping again, and the user will have to return to the settings to disable the history collection once more.



## FREDRICK A. ISAACS, M.D., P.C., FACS BOARD CERTIFIED OPHTHALMOLOGIST

Latest Advances in Cataract Surgery including the Restor® & LenSx (Femtosecond)  
Treatment of Glaucoma & Macular Degeneration  
(Avastin, Lucentis & Eylea Injections)  
Complete Exams and Contact Lens Exams

## Full Service Optical Shop Glasses, Sunglasses, Contact Lenses

We offer the latest diagnostic equipment for assessment  
of retinal disease and glaucoma.

**ON PREMISES:** Visual Fields, Cirrus HD - OCT,  
Fluorescein Angiography, Stereo Disc Photographs,  
Corneal Pachymetry and Topography.



**3801 International Drive, Suite 208  
Silver Spring, MD 20906  
301-598-8500**

LEISURE WORLD PLAZA PROFESSIONAL BUILDING

**EMERGENCY APPOINTMENTS AVAILABLE**



# Leisure World Club Trips

The next deadline for trip submissions is **Monday, Jan. 22**. The trips listed below are sponsored by Leisure World groups and organizations and not by Eyre Leisure World Travel. These trips are **open to all residents**, not only members of the specific club. For information, contact the person listed with each trip. (Do not contact the Eyre Leisure World Travel or E&R office.) Leisure World clubs and organizations that want to be included in this column must provide a submission to the News by 3 p.m. on the Monday deadline. Due to space limitations, the Leisure World News reserves the right to edit or delete submissions. **Email** your trip information to **lwnews@lwmc.com**.

**Please Note:** Member/Non-Member pricing is at the discretion of the individual clubs.

**Feb.  
28**

## "The Great Society" at Arena Stage

LWAAAC is sponsoring a trip to the Arena Stage in Washington, D.C., to see the play, "The Great Society," at a noon matinee performance. The play deals with President Lyndon Baines "LBJ" Johnson's efforts to maintain his relationship with Dr. Martin Luther King Jr., keep political opponents at bay and complete his social policy projects.

Tickets are \$60 and include Eyre bus transportation. Tickets may be purchased by placing your check, payable to LWAAAC, in the LWAAAC mail slot in E&R of Clubhouse I. All residents are welcome. For more information call Juanita Sealy-Williams at (301-822-4531).

**Mar.  
22**

## Harrington Casino in Delaware

Come with the **Going It Alone Club** on a trip to Harrington Casino. At the discretion of the casino, receive \$15 in slot play and a \$7 buffet credit.

The cost is \$25 for Club members and \$32 for non-members.

Sign up at Saturday Afternoon Live (SAL) from 1:30-3 p.m. in Clubhouse II. If you have a casino card number, bring it with you at sign up.

No refunds will be made after Saturday, Feb. 24, unless a replacement is made. For more information, call Joe Parker at (301-598-3457) or Sylvia Pachenker at (301-598-5325).

**April**

## 8-15 Bermuda Cruise

Join **NA'AMAT** on a seven-night cruise to Bermuda on the Carnival Pride, leaving from Baltimore.

Cabin prices are: balcony \$1,897 per person, double occupancy; outside \$1,562 per person, double occupancy; inside \$1,472 per person, double occupancy. Pricing includes transportation to/from pier, insurance, gratuities, cruise fare, taxes and fees. Passport required.

Call Jill, Eyre Leisure World Travel, to reserve your cabin, at (301-598-1599) or (301-854-6600 x 3225). Questions? Call Trudy Stone at (301-438-0016).

**May  
22**

## Camellia's Sin Tea Parlor and Meadowbrooke Gourds

Join the **Going It Alone Club** for High Tea in Carlisle, Pennsylvania. The tea includes salad, scones, petite sandwiches, desserts and seasonal teas. Then it's off to Meadowbrooke Gourds for a demonstration of crafting gourds into works of art.

On the way home, we stop at Baugher's Farm Market in Westminster, Maryland, for a little shopping.

The cost is \$68 for Club members and \$75 for non-members. The bus leaves Clubhouse II at 10 a.m. and returns at approximately 8 p.m.

Sign up at Saturday Afternoon Live (SAL) in Clubhouse II from 1:30-3 p.m. No refunds will be made after Saturday, April 21, unless a replacement is made. For more information, call Joe Parker at (301-598-3457) or Sylvia Pachenker at (301-598-5325).

**June  
4-8**

## Cape Cod & the Islands, Massachusetts

Join the **Going It Alone Club** for an excursion that includes Cape Cod, Martha's Vineyard, plus guided tours of Hyannis, Sandwich, Provincetown and Chatham, along with visits to the JFK Museum, the Sandwich Glass Museum and the Eastham Windmill.

The cost is \$460 for Club members and \$467 for non-members, double occupancy (\$135 additional for single occupancy). A \$200 reservation deposit is due at sign up with the balance due by March 31. Trip cancellation insurance is available at sign up.

Sign up at Saturday Afternoon Live (SAL) in Clubhouse II from 1:30-3 p.m. For more information, call Joe Parker at (301-598-3457) or Sylvia Pachenker at (301-598-5325).

**July  
24**

## "Jesus" at Sight & Sound Theatre

Come with the **Going It Alone Club** to see the musical, "Jesus" at the Sight & Sound Theatre in Lancaster, Pennsylvania. Also enjoy a smorgasbord lunch at the Bird-in-Hand Restaurant.

The cost is \$110 for Club members and \$117 for non-members, and includes lunch, show, transportation, tax and driver and restaurant gratuities.

Sign up at Saturday Afternoon Live (SAL) from 1:30-3 p.m. in Clubhouse II. No refunds will be made after Saturday, June 30, unless a replacement is made. For more information, call Joe Parker at (301-598-3457) or Sylvia Pachenker at (301-598-5325).

## ATTENTION, TRAVELERS!

All Leisure World travelers please note that no group on travel can park more than 12 vehicles overnight/long-term in the Clubhouse II parking lot. Also, parking overnight/long-term is at the owner's own risk.



# Clubs, Groups & Organizations In Brief

**Amateur Radio Club:** Calling all hams! All resident amateur radio operators (hams)—or would-be operators—are invited to join our business meeting/lunch the second Tuesday of each month. We meet in the Stein Room in Clubhouse I at 1 p.m. For more information or to learn about amateur radio, call Bryan West at (301-598-0137).

**Clipper Workshop:** Recruiting is underway for members who can help assemble clown hand puppets for Holy Cross Hospital. They are used in the pediatric and emergency rooms. No special skills are needed. Some sewing skills are necessary. We need a sewing machine stitcher. Bring a bag lunch. (We will eat in the lunchroom.) We meet every first and third Monday in Clubhouse II from 10 a.m.-2 p.m., or any portion of the time you can devote to making a child smile. We are looking for donations of cotton fabrics, stuffing, thread and iron-on facing. Contact Joan Mahoney at (240-833-2724) or Jane Brinser at (301-438-2599) for further information.

**Hispanos de Leisure World:** We invite all residents who are Hispano-Parlantes to join us in enjoying the activities of this club, including card games and conversations, every Friday at 3 p.m. in Clubhouse I. Once a month, Latin American and Hispanic movies, with English subtitles, are screened at the same location and same time, 3 p.m. Also, the club organizes a Fiesta de La Amistad on a weekend in the spring and a Christmas dinner in December. And we have organized and presented musical shows about once a year in the Clubhouse II auditorium as well. If interested, contact Maria Blanco, club president, at (301-847-9066) or Carlota "Loty" Goldenberg at (301-598-6869).

**Knitting Corner:** Join us the second and fourth Fridays of each month at The Inter-Faith Chapel from 10 a.m.-noon. Our next meeting is Jan. 26. Bring your knitting and enjoy the conversations. We have patterns and yarn for your project. Yarn donations gratefully accepted. Call Joan at (240-833-2724) if you have any questions.

**The Lapidary Shop:** Our well-equipped Lapidary Shop is available to all residents who join the Lapidary Club and take training on use of the shop's equipment. Shop steward Mark Parker oversees training and is usually in the shop on Monday afternoons after 2 p.m. To arrange for training, contact Mark at (240-723-5860), or drop by the shop in Clubhouse II on a Monday afternoon to talk to Mark and see the shop. For those who have received training, the shop is available whenever the Clubhouse II E&R office is open. Get trained and make cabochons. Get involved and make friends.

**LW Discussion Group:** The group meets the third Wednesday of each month at 1:30 p.m. in Clubhouse II. Various members lead discussions on hot topics and current events. At the Jan. 17 meeting, Phil Wendkos leads a discussion on the Israeli-Palestinian conflict. For more information on this, at times, provocative and always enlightening group, please contact Phil Wendkos at (301-598-0109) or (pwendkos@gmail.com).

**Musical Jammers:** We gather informally once a month with other amateur musicians, singers and lovers of music to sing, play music and have fun – no dues, no meetings, no agendas, no committees. We meet on the second Monday of every month at 10 a.m. in Clubhouse II. All instruments and voices are welcome. You bring it; we'll sing it. Questions? Call Richard Lederman at (301-598-1132).

**Nextdoor.com:** A friendly place online to share tips and meet neighbors. We already have a record of success helping make Leisure World even better. Free. Please join our 780 members. Go to ([www.nextdoor.com/join](http://www.nextdoor.com/join)) and enter the code QHMXCF.

**The Philadelphians:** We are regrouping and, starting in January 2018, will meet in Clubhouse II by the fireplace on the first Wednesday of the month at 11 a.m. Any questions? Call Steve Kane at (301-598-2330).

**The Pittsburgers:** If you were born, raised or lived in Pittsburgh and/or the Greater Pittsburgh area, you are welcome to join us. For more information, call Tania Iwanowski at (301-598-2278) or email ([Tania.Iwanowski@yahoo.com](mailto:Tania.Iwanowski@yahoo.com)).

**Quilt Group:** Come and join our fun group as we work on our individual projects. We now include those interested in all needlework and knitting. We meet the second and fourth Thursdays in the Clubhouse II multipurpose room at 9:30 a.m. If you have any questions, call Clydis Kellough at (301-642-2430). Our next meeting is Thursday, Jan. 25.

**Stitchers Group:** Needlepoint, cross-stitch and more. If you enjoy stitching or would like to learn, we meet every first and third Thursday, from 10 a.m.-noon, in the Clubhouse II multi-purpose room. Come and share your finished work and enjoy stitching with us while we learn new skills together. Call Audrey at (301-598-4903).

**Short Story Group:** The Group reads from a collection of short stories and discusses them together. We are currently reading from "The Oxford Book of American Short Stories," 2nd edition, editor Joyce Carol Oates. On Wednesday, Feb. 7, John Moens leads a discussion of "Give it Up for Billy" by Edmund White. On Wednesday, Feb. 21, Mary Ann Chinni leads a discussion of "Under the Radar" by Richard Ford. The Short Story Group meets at 11 a.m. on the first and third Wednesdays of the month in Clubhouse I. For information, call Beth Leanza at (301-598-4569).

**Stamp and Coin Group:** Are you a philatelist or a numismatic? Join the Stamp and Coin Club. We meet on the first Thursday of each month at 3 p.m. in Clubhouse I. Members discuss their collections, including first day covers, day of issue programs, yearbooks, coins, medals and more. Stamps are shared for "show-and-tell," and we hold an auction of members' stamps. In addition, a gift certificate from Coins of the Realm in Rockville is awarded as a door prize at each meeting. All residents and non-residents are welcome to attend. Annual dues are \$5. If interested, contact Rita Mastrorocco at (301-814-9196).

**Wood Shop Users Group:** The wood shop is located on the lower level of Clubhouse I; the entrance to the shop is off Gleneagles Drive. It is open Monday through Friday, 9 a.m.-3 p.m. and Saturday 9 a.m.-noon. An experienced monitor is on duty when the shop is open to assist members with their work and provide instructions in the use of shop equipment. Members are often willing to repair and refinish projects for Leisure World residents. For further information, call (301-598-1308).

**Women in the Military:** Are you a female who has served in the armed forces? Join us as we shine a light on the role that women play in serving our country. We also strive to promote awareness of the Women's Memorial at Arlington National Cemetery. We meet every second Wednesday of the month at 10 a.m. in the Terrace Room. Call Barbara Long at (301-438-3427) for more information.



Find Leisure World of Maryland  
on facebook at:  
[www.facebook.com/  
LeisureWorldofMaryland/](http://www.facebook.com/LeisureWorldofMaryland/)



or follow us on :  
[@LeisureWorldMd](https://twitter.com/LeisureWorldMd)



# SPORTS, GAMES & Scoreboards

## ■ Chess Club

### Chess Play 'Unfeathered' by Birds

by Bernie Ascher

The Chinese New Year, which begins on Friday, Feb. 16, and is known as the Year of the Dog, may be more widely recognized, but 2018 has also been designated by National Geographic as "The Year of the Bird."

In conjunction with other birdlife organizations, the magazine will celebrate the centennial of the Migratory Bird Treaty Act of 1918.

The Migratory Bird Treaty sounds like a government visa program with a quota limitation on immigration of birds. However, it is not. Birds are free to fly wherever they want.

The treaty, negotiated with Britain (representing Canada), is an agreement not to kill birds, or more specifically, to conserve them by making it illegal to kill them. The Act also bans hunting, capturing and selling about 800 species listed as migratory birds.

Exceptions are made in certain cases. For example, U.S. Fish and Wildlife Service (FWS) issues permits that allow Native Americans to use birds for religious ceremonies.

FWS also issues permits

for taxidermy, falconry, propagation and scientific and educational uses, as well as depredation permits to prevent bird attacks or allow for the killing of geese near an airport, where they pose a danger to aircraft.

The bird population on

the planet is estimated to be 200 to 400 billion, many times larger than the human population (roughly eight billion), but the number of birds

has been declining for many years.

It is estimated that 14 percent of all species will be extinct by 2100, according to the Center for Biodiversity and Conservation of the American Museum of Natural History.

As stated in its January issue, National Geographic magazine will feature stories about birds all year long, examining "how our changing environment is leading to

dramatic losses among bird species around the globe... our last, best connection to a natural world that is otherwise receding."

Birds bring natural beauty to the world. Many are scavengers, serving as the world's sanitation corps, devouring

dead animals, insects, rodents and crop pests. Some pollinate plants and spread seeds of many plants, including crops important to humans.

Seabirds and

bats produce guano used for fertilizer.

Millions of seabirds live in the Chincha Islands off the coast of Peru, producing excrement (guano) rich in nitrates and phosphates. Guano covered the islands with a coating 200 feet deep, which became a valuable source of fertilizer for American farmers in the 1840s.

Ships carried thousands of tons of guano to the U.S. If the country could train seabirds to fly over the farms that need fertilizer, money could be saved on transportation costs.

Try explaining these benefits to the people who are afraid of birds and hate birds.

Three

million Americans suffer from ornithophobia (an intense, irrational fear of birds) and many others feel uncomfortable in the presence of birds.

People hate birds for a variety of reason. They splatter automobile windshields, fly into jet engines causing airplane crashes, chew manicured golf greens, make a mess of garbage bags and spread diseases, such as avian influenza.

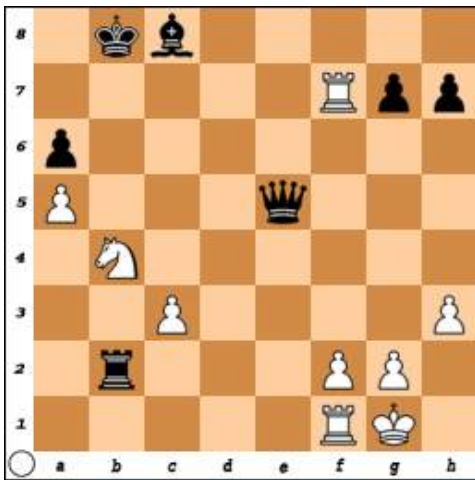
Birds and aircraft do not disturb chess games at Leisure World. Chess players feel comfortable because birds do not attack chess players, especially when they play indoors.

In the game pictured on this page, Black is winning, but it is White's turn to move. What is White's best move?

The answer follows the usual message that the Chess Club meets on Monday, Wednesday, and Friday from 1-4 p.m. in Clubhouse II. For further information, call Bernie Ascher at (301-598-8577).

ANSWER: White moves the Knight to c6, forcing the Black King to move to a8. White then moves the Rook from f7 to a7. Checkmate!

So, do not wait for Chinese New Year. Do not wait for more bird migration. Do not wait for a boatload of guano. Play chess now!



JOHN J. FERGUSON, ESQ.  
FERGUSON & WILPON

ESTATE ADMINISTRATION/PROBATE

WILLS POWERS OF ATTORNEY LIVING TRUSTS

REAL ESTATE MEDICAL DIRECTIVES/LIVING WILLS

CALL JOHN FERGUSON  
301-570-3633

3406 Olandwood Court, Ste. 202, Olney, MD 20832  
WE CAN MEET IN YOUR HOME OR OUR OLNEY OFFICE



240-441-1999  
301-460-4247

Manuela Thoms - Owner  
Email: sunshinepjs@gmail.com

Free Estimates  
No Job too Big or too Small

Reliable, Trusted,  
Professional Services

Thinking About Renovating?  
We can do everything for you!

- Painting • Carpeting
- Flooring • Carpentry

Moving In or Out?

We can make your home shine!

- Kitchen & baths • Refinishing
- Carpet cleaning • Repairs

Licensed and Insured  
MHIC# 134458



## ■ Tuesday and Friday Duplicate Bridge

Compiled by Jerry Miller

For Tuesday games, Flight A includes all players. Flight B includes only ACBL member pairs, each with less than 1,000 master points.

### Tuesday, Dec. 19, 2017

#### North-South

##### Flight A

1. Alan Ferraro – Liz Ferraro
2. Ann Ruth Volin – Stephan Billstein
3. Rosmarie Sutor – Thomas Leahy
4. Saul Penn – Wendy Morrison

##### Flight B

2. Rosmarie Sutor – Thomas Leahy

#### East-West

##### Flight A

1. Dora Levin – Bernice Felix
2. Nancy Gordon – Mildred Lieder
3. Robert Kerr – Lorraine Hegel
4. Bradley Tash – Robin Tash

### Friday, Dec. 22, 2017

#### North-South

1. Stephan Billstein – Jim Cowie
2. Diane Keiper – Robert Kerr

#### East-West

1. Aaron Navarro – Deborah Cobb
2. Mary Lafferty – Walter Lafferty

### Tuesday, Dec. 26, 2017

(No separate flight B)

#### North-South

1. Joe Boland – Howard Brewer
2. Aaron Navarro – Dorothy Cobb
3. Alan Ferraro – Liz Ferraro
4. Jerry Miller – Gerald Lerner

#### East-West

1. Patti Anschutz – Mary Lafferty
2. Dora Levin – Elly Gotkin
3. Douglas Brasse – Merrill Stern
4. Rae Newman – Helen Solomon

### Tuesday, Jan. 2, 2018

#### North-South

##### Flight A

1. Mary Lafferty – Patti Anschutz
2. Marlys Moholt – Jerry Miller
3. Rosmarie Sutor – Thomas Leahy
4. Walter Haass – Beverly Haass

#### East-West

##### Flight A

1. Robert Kerr – Lorraine Hegel
2. Nathan Tash – Howard Tash
3. Saul Penn – Wendy Morrison
4. Joe Boland – Howard Brewer

##### Flight B

1. Rosmarie Sutor – Thomas Leahy
2. Palma Seeger – Jim Anschutz

##### Flight B

1. Susan Weiss – Sue Swift

**No games Dec. 22, 29 or Jan. 5.**

The next Newcomers Duplicate Game is Monday, Jan. 29.

## ■ Thursday Afternoon Ladies Bridge

Compiled by Jackie Harrell

### Dec. 21, 2017

1. Bernice Davis, 4,630
2. Bernice Star, 3,320
3. Jackie Harrell, 3,070

### Dec. 28, 2017

1. Pat Patton, 4,300
2. Helen Montanaro, 3,660
3. Helen Hughes, 2,490

## ■ Friday Bridge

Compiled by Betti Goodman

### Dec. 15, 2017

1. Jerry Weiss, 4,340
2. Mort Faber, 3,620
3. John Hashim, 2,850
4. Shirley Griffin, 2,420

### Dec. 22, 2017

1. Joyce Fischer, 3,400
2. John Hashim, 3,260
3. Marc Levin, 2,970
4. Shirley Rosenhaft, 2,420

# LEISURE WORLD®

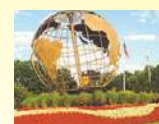
**55+ "Resort" Community**

**18 Hole Golf Course**

**Resident \$ 800 Annual Dues** (No Green Fees)

**Non-Resident \$ 900 Annual Dues** (No Green Fees)

**"Country Club Feel"**



**2017 To-Date - Oct 10th**

**Sold: 18**

**Ratified: 2**

**Listings: 14**

**Please put my Winning Strategies to work for you and your Friends, Neighbors or Relatives**

**Your Referrals are greatly Appreciated**



**Douglas Brasse**

**Cell: (301) 448-8708**

**dbrasse@weichert.com**

**Aspen Hill/ Leisure World Plaza**

**3816 International Drive**

**Silver Spring, MD 20906**

**Office Fax: (301) 598-9325**

**MAIN OFFICE: (301) 681-0550**

**Office Fax: (301) 598-9325**

**MAIN OFFICE: (301) 681-0550**

**dougbrasse.com**

**Weichert Realtors®**

**Authorized Leisure World® Specialist**

Leisure World® is a registered trademark owned by RRLH, Inc. Doug Brasse is authorized by RRLH, Inc. under license to use the Leisure World® service trademark

## ■ Wednesday Night Chicago Bridge

Compiled by Abigail Murton

### Dec. 20, 2017

1. Abigail Murton and Doug Brasse, 7,000
2. Jack Looney and Bruce McKay, 4,330
3. Marcia and Monroe Elbrand, 3,160
4. Joan Thomas and Joyce Fischer, 2,710
5. Norman Salenger and partner, 2,630

2. Helen Montanaro and Betti Goodman, 3,990
3. Ann and Joe Boland, 3,210
4. Jo Ann Gellman and Sally McGowan, 3,150

### Jan. 3, 2018

1. Anna Pappas and Bob Bridgeman, 4,160
2. Betti Goodman and Helen Montanaro, 3,290
3. Ann and Joe Boland, 3,270
4. Joan Joyce and Leloy Cottrell, 2,940

### Dec. 27, 2017

1. Joyce and Dick Rosenberg, 7,040

**CELEBRATES A BRAND NEW YEAR WITH A BRAND NEW STUDIO AT MEDSTAR HEALTH - LEISURE WORLD**

**INTRODUCTORY OFFER**  
PURCHASE TWO 60 MINUTE MESSAGES BY FEBRUARY 16TH  
GET THE SECOND ONE AT 35% OFF

**(Family or friend is eligible for second massage)**

**202-306-0894**

Call or text with your questions or to schedule a massage

**Leisure World News is available at residents.lwmc.com**



# Sports, Games & Scoreboards In Brief

**Bid Whist:** Do you know what Sport the Kitty, Boston Time, Rise and Fly all mean? If you like the game Bid Whist and would like to play one day per week, contact Jessie at (314-374-4501).

**Bridge:**

• **Tuesday and Friday Duplicate Bridge** games are at 7 p.m. in Clubhouse I. New players with partners are welcome. Have fun. Win masterpoints. Questions? Call Nadyne at (301-598-5677).

• The **Wednesday Night Chicago Bridge Group** is looking for new members. The group meets every Wednesday in Clubhouse I. Play begins promptly at 6:45 p.m. Bring a partner and be ready for a few hours of friendly games. Questions? Call Doug at (301-448-8708).

• **Men's Bridge** seeks players. We meet Mondays and Thursdays at 12:30 p.m. in Clubhouse II. No partner needed. Please, no beginners.

• **Thursday Ladies Bridge** welcomes more card players. If interested, call Jackie Harrell at (301-598-4341).

**Cribbage:** We meet for 150 minutes of competitive fellowship Thursdays at 9:30 a.m. in Clubhouse II. We have cards and cribbage boards, and would be pleased to teach you the game. It is a mixture of rummy and pinochle and is pure fun. (We do not even keep score.) For more information, call George at (301-598-9747) or Bill at (301-598-7270). We look forward to seeing you.

**Duckpin Bowling:** Join us for the Duckpin Mixed Bowling League Mondays at 12:30 p.m. at White Oak Bowling Lanes (11207 New Hampshire Ave., Silver Spring). We need bowlers of all skill levels and will welcome you into our enthusiastic group. We carpool regularly, so non-drivers need not stay away. Call Grace White at (301-438-7892) or Flora Wolf at (301-598-5807)

to join as a substitute or regular bowler.

**Indoor Pool Volleyball:** Experienced players are welcome to join a competitive game in the social pool at Clubhouse II on Mondays and Thursdays at 6:45 p.m. Basic volleyball skills are required. For beginners, social games are Wednesdays, Fridays and Saturdays at 3 p.m. If you don't have a yearly indoor pool pass, a \$3 ticket good for one pool session may be purchased at the Clubhouse II E&R office. Email Laurie Burdick at (lgburdick@aol.com) with questions.

**Jigsaw Puzzle:** There is a jigsaw puzzle table in the Clubhouse II lobby. Feel free to work on it at your leisure.

**Mah Jong:** Learn how to play Mah Jong. Call (301-598-3438).

**Ping Pong:** Get healthy exercise and camaraderie playing ping pong. The club meets every Wednesday and Friday, from 1-3 p.m., in Clubhouse II multi-purpose room. Drop in anytime during that period. Some experience preferred. If interested, call Julie Friedman at (301-598-5424).

**Pinochle Players:** If you enjoy pinochle, join us at Clubhouse II on Monday evenings, 6:30-8:30 p.m. Call us at (301-775-7238) or (301-598-7064).

**Poker:**

• A few poker game openings are available at the Greens, Thursdays 7-10 p.m. No prior experience necessary. If interested, call Marcel at (240-486-6205).

• **Men's Poker** is seeking new members. Play is daily, beginning around 9 a.m. in the Game Room in Clubhouse II.

**Scrabble:** Please join us at Clubhouse II on Tuesdays at 12:30 p.m. for a game of Scrabble. Boards are available. Call Arlyne at (301-438-7442) if you are interested in playing.

## Olney Assisted Living CAREGIVER ACADEMY:



## Go from Overwhelmed to Ordered

*Presented by: Kay Bransford*

**Saturday, February 3, 2018**

11:30 am - 12:00 pm Registration & Light Refreshments

12:00 pm - 1:30 pm Presentation

Being held at 16940 Georgia Avenue, Olney



**RSVP at [Olney@olneymemorycare.com](mailto:Olney@olneymemorycare.com) or 301.570.0525**

16940 Georgia Avenue • Olney, Maryland 20832 • [www.olneymemorycare.com](http://www.olneymemorycare.com)

**Creating positive partnerships the Artis way**

 An Equal Opportunity Employer-M/F/D/V

Managed  
by



**Leisure World News is available at [leisureworldmaryland.com](http://leisureworldmaryland.com)**



# VALENTINE'S DAY DINNER

Wednesday, February 14, from 4 p.m.-9 p.m.  
Clubhouse Grille

**BROILED FRESH HALIBUT** ..... \$30  
risotto, asparagus and lemon butter sauce

**STEAK AND SHRIMP**..... \$30  
New York strip, jumbo shrimp, mashed potatoes and asparagus

**STUFFED SALMON** ..... \$30  
Crab Imperial, hollandaise, mashed potatoes, asparagus

**BROILED LOBSTER CRAB CAKES** ..... \$30  
risotto and asparagus

**TWIN LOBSTER TAILS** ..... \$30  
rice pilaf and asparagus

**SURF AND TURF**..... \$30  
filet mignon, lobster tail, mashed potatoes and asparagus

**GRILLED LAMB CHOP** ..... \$30  
mashed potatoes, red wine demi and asparagus

All entrees include a house garden salad or caesar salad.  
Also includes a platter of chocolate covered strawberries and assorted chocolate truffles and petit fours for the table.

*\*Reservations Available any time from 3 p.m. until 8:30 p.m.  
Call 301-598-1330*



## Dessert?

Even if you decide to leave the community for dinner, stop by Clubhouse Grille afterwards for dessert and coffee; maybe even a drink.

*Enjoy coffee and any dessert  
for only \$4 after 8 p.m.*

### Also available:

- Irish Coffee .....\$3
- Grand Marnier .....\$5
- Kahlua .....\$3
- Drambuie .....\$4
- Bailey's Irish Cream ....\$3
- Cointreau .....\$4
- Amaretto DiSaronno ...\$3



## Happy Hour

Wednesday through Saturday, 4 p.m. - 6 p.m.

### ALL RAIL COCKTAILS ONLY \$3

*Pinnacle Vodka, Seagram's Gin,  
Old Grand Dad Bourbon, Seagram's 7 Whiskey,  
Bacardi Rum, White Horse Scotch*

### ALL CALL BRAND COCKTAILS ONLY \$4

*Tito's Vodka, Tanqueray Gin, Jim Beam Bourbon,  
Seagram's VO Scotch Whiskey, Captain Morgan Rum,  
Cutty Sark Scotch*

### ALL TOP SHELF COCKTAILS ONLY \$5

*Absolut Vodka, Bombay Gin, Maker's Mark Bourbon,  
Jack Daniels Whiskey, Johnnie Walker Red Scotch*

### ALL BEER AND HOUSE WINES ONLY \$3

**Clubhouse Grille Hours:** Wed. – Sat.: 4 p.m. – 10 p.m. | Brunch, last Sunday of each month: 10 a.m. – 3 p.m.

**Stein and Terrace Room Hours:** Sunday: 9:30 a.m. – 8 p.m. | Mon.– Tues.: 9 a.m. – 8 p.m. | Wed.– Sat.: 9 a.m. – 9 p.m.

For Clubhouse Grille Reservations, call 301-598-1330 | For Stein and Terrace Room reservations, call 301-598-1331



# CLASSES & Seminars

Sign-up will be taken for newly advertised classes beginning on the Tuesday after the date of the edition of Leisure World News in which it appears. All sign ups begin at 8:30 a.m. in either Clubhouse I or Clubhouse II as noted in the class description. Residents can register for themselves and two other residents. **Please bring your Leisure World ID.**

If required enrollment is not met five days prior to the start date, the class will be cancelled.

\*\*\***Please note fees for non-residents: add \$10 for 1-6 session classes and \$20 for classes of 7 or more sessions.**

Payment can be made by check or credit card (MasterCard, VISA or Discover); no cash is accepted. Checks *must* be made payable to Leisure World of Maryland Corp. Please sign up in advance of the starting date of the class since instructors need to know how many will participate. **Note: Registration will not be accepted nor refunds issued after the completion of two sessions!**

Leisure World does not discriminate on the basis of race, color, national or ethnic origin in admission policies, education policies or programs.

## Community Classes Policy for Inclement Weather

If Montgomery County Public Schools are closed, all classes will automatically be cancelled. If school openings are delayed, classes will be held at the discretion of the instructor.



### EDUCATION

**NEW – Aspects of Israel: Complex and Beautiful, an ALL course:** This course will explore the many facets of Israeli society. Each week, a different Shaliach – Israeli emissary – will give a talk about a different aspect of Israel.

Class meets Thursdays, Feb. 22-March 15, 1:15-2:15 p.m. **Fee: \$27. Register at Clubhouse I.**

**NEW – Introduction to the Kabbalah, an ALL course:** This course will cover the ancient wisdom that reveals how the universe and life work. On a literal level, the word “Kabbalah” means “to receive.” Join Rabbi Hillel Shaps, from the Greater Washington Kollel, on an exploration of this ancient spiritual path.

Class meets Mondays, Feb. 26-March 19, 11 a.m.-noon. **Fee: \$27. Register at Clubhouse I.**

*Adult Living and Learning (ALL) programs are co-sponsored by the Jewish Residents of Leisure World (JRLW) and the Bender JCC of Greater Washington.*

### NEW – Great Decisions in Foreign Policy, a CLL course:

This course, led by David Frager, is the 2018 version of the Foreign Policy Association’s (FPA) Great Decisions series. Participants will discuss the waning of Pax Americana, Russia’s foreign policy, China and America: the new geopolitical equation, media and foreign policy, Turkey: a partner, U.S. global engagement and the military, South Africa’s fragile democracy and global health: progress and challenge.

A text prepared by the FPA is included in the price of the course and is the basis for course discussions.

The class meets on Thursdays, Feb. 22, March 1-15, April 12-26 and May 3, at 2 p.m., with a break between the first four and last four sessions. **Fee (includes one book): \$50 single; \$75 couple, if sharing one book. Register at Clubhouse I.**

**Reverend Martin Luther King Jr.; In His Own Words, a CLL course:** In this course, led by Paul Levy, participants will read and discuss the content and context of each

of the following: “Letter from Birmingham Jail,” “I Have a Dream” speech, and “Beyond Vietnam, an Address Delivered at Riverside Church.” The goal of this course is for participants to gain a greater understanding of King’s views and his impact on the 1960s, the Civil Rights movement and his continuing legacy.

February is Black History Month. This course is designed to coincide with Black History Month, and sessions meet on Tuesdays, Feb. 6-20, 10-11:15 a.m. **Fee: \$15. Register at Clubhouse I.**

### Fluvial Geography: Rivers of the World, a CLL course:

The course starts with a consideration of the importance of rivers from a historical standpoint, including

discussions of cradles of civilizations in various parts of the world, rivers and their roles in U.S. history. This is followed by an examination of some of the physical geography of rivers. The economic importance of rivers for such things as providing power, manufacturing and transportation is then considered. Environmental problems such as floodplains, pollution, and competition for a finite resource are also included.

In general terms, rivers of the U.S. will be compared and contrasted with rivers from around the world. And, finally, rivers are looked at in terms of their importance to cultures from around the world.

This course, led by Tom Conger, meets Tuesdays, Feb. 6-March 13, 1-3 p.m. **Fee: \$15. Register at Clubhouse I.**

*For more information about the Center for Lifelong Learning (CLL) and its instructors, visit ([www.cllmd.com](http://www.cllmd.com))*

### The “Emoluments Clause” – What is it?

Find out what relevance this little-known clause in the U.S. Constitution holds today.

“One of the weak sides

of republics, among their numerous advantages is that they afford too easy an inlet to foreign corruption.” The Federalist No. 22, Alexander Hamilton, 1787.

Fee includes pocket-sized edition of the U.S. Constitution. For more information, contact Betty Smith, BS, MLS (301-598-4245).

This two-session class meets Wednesdays, Jan. 24-31, 2-4 p.m. **Fee: \$15. Register at Clubhouse I.**

## EXERCISE

### NEW – Stretch, Tone and Strength Training for the Active Adult (9:15 a.m.):

Join our fun exercise class that utilizes a variety of equipment for the active adult. This dynamic strength-training class will develop a body instilled with power and one that can move with ease and confidence. Get stronger, steadier, and more balanced as you develop new body awareness, flexibility and control of “usable strength.”

Weights, bands, and balls are provided; and a mat is recommended for some floor work. Modification can be made for the individual exerciser and all are welcome to join in the fun. The instructor is Linda Ginsburg.

Class meets Mondays, Feb. 5-April 2 (no class Feb. 19) and/or Thursdays, Feb. 8-March 30, 9:15-10:15 a.m. **Fee: \$55, one day per week, \$85, two days. Register at Clubhouse I.**

### NEW – New Students Only - Stretch, Tone and Balance for the Active Adult (10:30 a.m.):

The early morning class is filling up! This class is for new students who want to join a fun exercise class that utilizes a variety of equipment for the active adult. This dynamic strength-training class will develop a body instilled with power and one that can move with ease and confidence. Get stronger, steadier, and more balanced as you develop new body awareness, flexibility and control of “usable



strength.”

Weights, bands, and balls are provided; and a mat is recommended for some floor work. Modification can be made for the individual exerciser and all are welcome to join in the fun. The instructor is Linda Ginsburg.

Class meets Mondays, Feb. 5-April 2 (no class Feb. 19) and/or Thursdays, Feb. 8-March 30, 10:30-11:30 a.m. **Fee: \$55, one day per week, \$85, two days. Register at Clubhouse I.**

**Chair Yoga with Robin, Monday afternoon:** Age well. Prevent or diminish the chronic degenerative disease processes that frequently accompany aging. Gentle, yet effective movements done while sitting in a chair. Increase joint mobility, balance, flexibility, strength, tone, circulation of blood and lymph, and improve breathing. Optional standing balance exercises included. Relaxing and fun! Mindfulness training introduced and basic holistic lifestyle habits discussed.

Instructor Robin M.

Hartman, C-IAYT, CHHC, RYT, PTA, is licensed to perform physical therapy in the state of Maryland. She is also a certified holistic health coach, registered yoga teacher, and certified yoga therapist. She will answer questions after class or can be reached at (240-350-8820).

Class meets Mondays, Jan. 22-March 26 (no class Feb. 5 or 12), 2-3 p.m. **Fee: \$100. Register at Clubhouse II.**

**Ba Duan:** This is the world's oldest exercise for seniors and those who need to restore a normal, optimum state of health. Participants will learn to combine joint movement and breathing to improve balance and to augment core strength.

**Limited enrollment.** Class meets Mondays, Jan. 29-April 2, 4-5 p.m. **Fee: \$15. Register at Clubhouse II.**

**Move to the Beat, Evenings:** This class is for those who do not like to exercise but, as the doctors say, you must keep moving. So, grab a

friend and let's have fun as we move by walking, stretching and dancing to music from the 40s on. (Singing along is allowed!)

All you have to do is follow Gerry as she leads you through your moves. Your moves are a little ballet, a little jazz, a little salsa, and more. Remember,

your moves should always be done at a pace that is comfortable for you.

Sign up now for this fun, no-pressure class. For more information, call Gerry at (301-438-7452). Class meets Tuesdays, Jan. 23-Feb. 27, 6:15-7 p.m. **Fee: \$39. Register at Clubhouse II.**

## Foot & Ankle Specialists *of the Mid-Atlantic*

*Now the preferred podiatry practice  
at MedStar Health at Leisure World*

**End your toes woes!**

**Walk pain-free!**

Visit Dr. K at MedStar Health  
at Leisure World,  
3305 N. Leisure World Blvd.,  
for treatment of your toes,  
heels, ankles and feet.



**Dr. Freedman & Dr. Kathrotiya-Mago**

Leisure World Plaza Professional Building

3801 International Dr. • Suite 204 • Silver Spring, MD 20906

[www.footandankle-usa.com](http://www.footandankle-usa.com)

**Call today: (301) 598-0130**



## The Smart Choice for Home Care.



You are a whole person and we believe that we have the opportunity to make your day a little easier and more meaningful. As one of Maryland's original home care agencies, we have earned the trust of thousands of local families. Call today to arrange care for just a few hours or around the clock.

- Expert matchmaking • Help with Personal Care • Companionship
- Transportation to Doctors' visits & appointments • Medication reminders
- Meal prep, housekeeping & laundry • Care supervised by Registered Nurses

**Flexible hours – Consistent caregivers – Simple set up – Available 24 hours a day License: MD RSA #399**

**[www.capitalcitynurses.com](http://www.capitalcitynurses.com) • 301.652.4344**



# EYRE Leisure World Travel

Travel & Tour Department • (301) 598-1599 • Tuesday, Wednesday & Thursday 8:30 am-2 pm  
Reservations can be made Monday through Friday, 8:30 am-5 pm by calling 301-854-6600 #4  
For more detailed itineraries, please see the Eyre Representative at the Eyre Leisure World Travel Office.

## DAY TRIPS

### Brunch & Basilica, DC

Sun., 2/4, 10:15 am-4:15 pm .....\$95.00 per person  
Enjoy a leisurely brunch at the Madhatter and a guided tour of the Basilica.

### Riverdance: 20th Anniversary Tour

Fri., 2/9, 8:15 am-6:30 pm .....\$156.00 per person  
This Irish dance phenomenon is back in Riverdance at the American Music Theatre in Lancaster, PA. Lunch is included at Shady Maple Smorgasbord.

### Hollywood Casino, WV

Mon., 2/19, 10:00 am-5:45 pm .....\$38.00 per person  
\$15.00 slot play from casino and transportation only.

### Terra Cotta Warriors, Franklin Institute, PA

Fri., 3/2, 7:15 am-6:00 pm .....\$89.00 per person  
Explore the mystery of China's Terracotta Warriors. Lunch included.

### Philadelphia Flower Show

Thur., 3/8 or Fri., 3/9  
7:45 am-7:45 pm .....\$86.00 per person  
This year's theme is Waterworks! Lunch on own.

### 9/11 Memorial & Museum, New York

Sat., 3/17, 7:00 am-11:45 pm .....120.00 per person  
One World Observatory\* .....139.00 per person  
Includes a \$10 Gift Card to Cracker Barrel. \*Optional add-on to your day - Travel up to One World Observatory for an additional \$19.00 per person.

### Orchid Exhibit at Hillwood

Tues., 3/20, 10:15 am-4:45 pm .....\$90.00 per person  
Marjorie Merriweather Post had the greenhouse constructed to house her extensive collection of orchids. Enjoy a tour of the greenhouse and learn about its history. Lunch at the café.

### \*NEW\* National Museum of Jewish History, PA "Leonard Bernstein: The Power of Music"

Wed., 3/21, 8:15 am-6:00 pm .....\$105.00 per person  
Admission covers two exhibits: the core exhibit (docent lead) and "Leonard Bernstein: The Power of Music," celebrating the centennial birthday of one of the 20th century's most influential cultural figures. Boxed lunch provided.

### Hagerstown Outlets

Thurs., 3/22, 9:00 am-4:45 pm .....\$35.00 per person  
Shop 'til you drop! Transportation only.

### "Jesus," Sight & Sound Theatre in PA

Sat., 3/24, 9:45 am-6:15 pm .....\$159.00 per adult  
.....\$99.00 per child  
The story of "Jesus" and the everyday people whose lives he changed forever. Lunch prior to the show at Hershey Farm Restaurant.

### "The Hunchback of Notre Dame," Riverside Center for the Performing Arts, Fredericksburg, VA

Wed., 3/28, 9:45 am-6:45 pm .....\$117.00 per person  
As the bells of Notre Dame resound through the famed cathedral in 15th-century Paris, Quasimodo, the deformed bell-ringer who longs to be "Out There," observes all of Paris reveling in the Feast of Fools. Lunch included.

### Cherry Blossom Tour, DC

Mon., 4/2, 10:00 am-3:15 pm .....\$79.00 per person  
Driving tour of DC with stops at WWII Memorial, FDR Memorial & Martin Luther King Jr. Memorial. Lunch at Carmine's included.

### Odyssey Cherry Blossom Luncheon Cruise, DC

Tues., 4/3, 9:00 am-3:45 pm .....\$105.00 per person  
Step aboard the "Odyssey" and experience the luxury only a true cruising vessel can provide. Enjoy a fine lunch with live entertainment and see our nation's greatest monuments as they drift past your table.

### Boston Pops Orchestra at Strathmore, MD

Sun., 4/8, 1:00 pm-5:15 pm .....\$148.00 per person  
It's a Jazz Age jubilee with conductor Keith Lockhart and the Boston Pops. Tickets only.

### Barn Quilts, Antrim 1844 & Baughers, MD

Wed., 4/18, 7:45 am-5:00 pm .....\$104.00 per person  
The Carroll County Barn Quilt Trail is a program that pays homage to Carroll's agrarian history by installing 8-foot square quilt blocks on scenic barns throughout the county. Lunch is included and will be at the infamous Antrim 1844 in Taneytown. After lunch, a stop will be made at Baugher's Restaurant that features country cooking and fresh baked goods for purchase.

### Backroads to Freedom-Harriet Tubman, MD

Sat., 4/21, 8:15 am-7:30 pm .....\$115.00 per person  
A step-on Guide will join us for the day to take you through the new Harriet Tubman Underground Railroad State Park; Travel through the Blackwater National Wildlife Refuge; hear stories of the Network to Freedom Highway and end the day with a plated lunch at Suicide Bridge Restaurant.

### "Grease" the Musical at Dutch Apple, PA

Wed., 5/16, 9:00 am-6:00 pm .....\$112.00  
Dust off your leather jackets, pull on your bobby-socks and take a trip to a simpler time! Transportation, show and lunch included.

## ★ New Days at Leisure World ★

Starting January 2018  
Tuesday, Wednesday, Thursday  
8:30 am-2 pm

## MULTI-DAY TRIPS

Myrtle Beach & Charleston, SC  
March 18-22

Best of Israel & Jordan  
March 21, Oct. 3 or Nov. 7  
12 days (fly/drive)

St. Augustine, Amelia Island  
& Jacksonville, FL  
April 8-14

Sedona's Red Rocks  
& the Grand Canyon  
April 15-20

A Trolley, A Train  
& Patsy Cline's Winchester  
May 23-25

All the Presidents Homes  
June 3-5

Newport  
June 7-11

Cape Code  
July 22-26

Nova Scotia & Canada's  
Maritimes  
Aug. 10-18

A Taste of Tuscany  
Sept. 2-9

Mystical Peru  
Sept. 11-17

## CRUISES

Carnival Pride Bermuda  
Cruise  
April 8-15

Princess Cruise Alaska on the  
Golden Princess (land/cruise)  
Aug. 14-25

Princess Cruise Alaska on the  
Golden Princess (cruise only)  
Aug. 18-25

Royal Caribbean Canada &  
New England  
Sept. 27- Oct. 6

We can book any cruise line anywhere you want to cruise.

(All Trips depart from Clubhouse II)

Some trips require a certain amount of walking. The shoe symbol  provides an indication of how much walking may be involved.

Key:



Easy Walking



More Walking



A Lot of Walking

Eyre at Leisure World Travel Office, located in Clubhouse I, is a department of Eyre Bus, Tour & Travel. We offer a full service travel agency that specializes in airline reservations, cruises, group tours, vacation packages, hotel accommodations and auto rental. We have been providing "Excellence in Travel for 60 Years".

**INCLEMENT WEATHER POLICY:** Please call 301-598-1599 after 7 am on the day of a trip to find out if we have cancelled, postponed or are going. If a trip is cancelled, you will also receive a phone call from us once the office is open.



# CALENDAR *of Events*

**Friday, January 19**

**Clubhouse I**

10:00 a.m. Drawing Clinic Art Class  
10:00 a.m. Book Club Network: Bookies  
10:00 a.m. Book Club Network: Diversity Strong  
12:15 p.m. Kiwanis Club  
1:30 p.m. Any Level Watercolor Art Class  
3:00 p.m. Hispanos de LW: Games  
7:00 p.m. Friday Duplicate Bridge  
**Clubhouse II**  
1:00 p.m. Zumba Gold Class  
1:00 p.m. Ping Pong Club  
1:00 p.m. Chess Club  
1:00 p.m. Friday Bridge Group  
4:00 p.m. LWAAAC Movie: “An Interview with John Hope Franklin”  
7:00 p.m. Baby Boomer Club: Movie

**Saturday, January 20**

**Clubhouse I**

9:00 a.m. Gentle Yoga Class  
10:00 a.m. Open Art Studio  
**Clubhouse II**  
9:15 a.m. JRLW Services  
12:00 p.m. LGBT Alliance  
2:00 p.m. Going It Alone Club: Social  
4:00 p.m. Benny Goodman Tribute

**Sunday, January 21**

**Clubhouse I**

10:00 a.m. JRLW Breakfast Forum  
**Clubhouse II**  
3:30 p.m. Camera Club Photo Matinee

**Monday, January 22**

**Clubhouse I**

1:00 p.m. Paintbrush and Knife Art Class  
1:30 p.m. LW Chorale  
1:30 p.m. Book Club Network: Fall Readers  
7:00 p.m. Bingo  
**Clubhouse II**  
9:00 a.m. Senior Sneakers Class  
10:30 a.m. Zumba Gold Class  
11:00 a.m. Chair Yoga Class  
12:30 p.m. Men’s Bridge  
1:00 p.m. Chess Club  
2:00 p.m. Line Dance Class  
2:00 p.m. Chair Yoga Class  
3:00 p.m. Line Dance Class  
4:00 p.m. Ba Duan Class

**Tuesday, January 23**

**Clubhouse I**

9:30 a.m. Any Medium Art Class  
1:00 p.m. Any Level Watercolor Techniques Art Class  
2:00 p.m. Book Club Network: Mystery Book Suspensers  
7:00 p.m. Duplicate Bridge  
7:00 p.m. Trivia Group  
**Clubhouse II**  
10:00 a.m. LW Apple Club  
11:00 a.m. Mild Exercise Class  
11:00 a.m. Water Exercise Class  
12:30 p.m. Scrabble Group  
1:00 p.m. Non-Impact Fusion Water Class  
1:30 p.m. Comedy and Humor Club  
2:30 p.m. Unitarian Universalists Movie: The Day Tomorrow Began  
6:15 p.m. Move to the Beat Class  
7:00 p.m. Camera Club

**Wednesday, January 24**

**Clubhouse I**

9:00 a.m. Gentle Yoga Class

10:00 a.m. Express Yourself Art Class  
10:00 a.m. CLL Heliophysics Class  
1:00 p.m. Oils and Acrylics Art Class  
2:00 p.m. Emoluments Clause Class  
2:00 p.m. LW Green  
3:00 p.m. Intermediate Bridge Class  
6:45 p.m. Chicago Bridge

**Clubhouse II**

11:00 a.m. Mild Exercise Class  
1:00 p.m. Chess Club  
1:00 p.m. Ping Pong Club  
1:00 p.m. Aqua Fit Class  
1:30 p.m. JRLW Movie: “Keep Quiet”  
2:00 p.m. Chair Yoga Class

**Thursday, January 25**

**Clubhouse I**

10:00 a.m. Painting is for Everyone Art Class  
12:30 p.m. Ladies Bridge  
1:00 p.m. Oils and Acrylics Art Class  
2:00 p.m. Memory Café  
**Clubhouse II**  
9:00 a.m. Senior Sneakers Class  
9:30 a.m. Quilters Group  
11:00 a.m. Water Exercise Class  
12:30 p.m. Men’s Bridge  
1:00 p.m. Non-Impact Fusion Water Exercise Class

**Friday, January 26**

**Clubhouse I**

10:00 a.m. Drawing Clinic Art Class  
2:30 p.m. Beginner Bridge Class  
1:00 p.m. Any Level Watercolor Art Class  
3:00 p.m. Hispanos de LW: Games  
7:00 p.m. Friday Duplicate Bridge  
**Clubhouse II**  
10:00 a.m. Chinese Club  
1:00 p.m. Ping Pong Club  
1:00 p.m. Chess Club  
1:00 p.m. Friday Bridge  
1:00 p.m. Zumba Gold Class

**Saturday, January 27**

**Clubhouse I**

9:00 a.m. Gentle Yoga Class  
11:00 a.m. Edmonson Historical Society  
7:30 p.m. Ballroom Dance Club

**Clubhouse II**

9:15 a.m. JRLW Service  
2:00 p.m. Going It Alone Club: Bingo/Video

**Sunday, January 28**

**Clubhouse I**

2:00 p.m. Italian Club General Meeting  
**Clubhouse II**  
10:00 a.m. CLL Tech Day Students  
10:30 a.m. Jewish Discussion Group  
2:00 p.m. Movie: “The Zookeeper’s Wife”

**Monday, January 29**

**Clubhouse I**

9:15 a.m. Stretch and Tone Class  
10:30 a.m. Beginner Stretch and Tone Class  
1:00 p.m. Paintbrush and Knife Art Class  
1:30 p.m. LW Chorale  
2:00 p.m. CLL NIH Program  
6:45 p.m. Newcomers Bridge  
7:00 p.m. Bingo

**Clubhouse II**

9:00 a.m. Senior Sneakers

**Dial 301-598-1313**  
**for recorded Daily Events**

## Meetings of the LWCC Board of Directors, Executive Committee and Advisory Committees

**Restaurant**

Jan. 22, 10:00 a.m., Clubhouse I

**LWCC Board of Directors**

Jan. 30, 9:30 a.m., Clubhouse I  
The meeting airs on Feb. 4, 7 and 9 at 4 p.m. and 7 p.m. on channel 974.

**LWCC Executive Committee**

Jan. 19, 9:00 a.m., Sullivan Room  
The meeting airs on Jan. 24, 25 and 26 at 4 p.m. and 7 p.m. on channel 974.

## Leisure World Mutual Meetings

**January 22**

**Montgomery Mutual Board**

9:30 a.m., Clubhouse I  
**Mutual 23 Board**  
10:00 a.m., Party Room  
**Mutual 9 Board**  
10:00 a.m., Sullivan Room

**January 23**

**Mutual 7 Board**

10:00 a.m., Clubhouse I

**January 24**

**Mutual 19B Agenda**

1:00 p.m., Sullivan Room

**January 25**

**Mutual 10 Board**

9:30 a.m., Sullivan Room

**Mutual 20A Board**

9:30 a.m., Party Room 1

**Mutual 27 Board**

10:00 a.m., Community Room

**Mutual 26 Board**

10:30 a.m., Party Room

**Mutual 24 Board**

1:30 p.m., Community Room

**January 26**

**Mutual 17B Board**

10:00 a.m., Party Room

**January 30**

**Mutual 17A Board**

2:00 p.m., Party Room

**Mutual 21 Board**

2:30 p.m., Community Room 3

**January 31**

**Mutual 20B Board**

9:00 a.m., Community Room 3

**Mutual 19B Board**

1:00 p.m., Clubhouse II

Meeting times and locations subject to change.

10:30 a.m. Zumba Gold Class  
11:00 a.m. Chair Yoga Class  
12:30 p.m. Men’s Bridge  
1:00 p.m. Chess Club  
2:00 p.m. Line Dance Class  
2:00 p.m. Chair Yoga Class  
3:00 p.m. Line Dance Class

**Tuesday, January 30**

**Clubhouse I**

9:30 a.m. Any Medium Art Class  
1:00 p.m. Watercolor Techniques Art Class  
7:00 p.m. Duplicate Bridge  
7:00 p.m. Trivia Group

**Clubhouse II**

9:30 a.m. Beginner and Advanced Tai Chi Class  
11:00 a.m. Water Exercise Class  
11:00 a.m. Mild Exercise Class  
12:30 p.m. Scrabble Group  
1:00 p.m. Non-Impact Fusion Water Exercise Class  
1:30 p.m. Comedy and Humor Club  
6:15 p.m. Move to the Beat Class

**Wednesday, January 31**

**Clubhouse I**

9:00 a.m. Gentle Yoga Class  
10:00 a.m. Express Yourself Art Class  
10:30 a.m. CLL Heliophysics Class  
1:00 p.m. Oils and Acrylics Art Class  
2:00 p.m. Emoluments Clause Class  
3:00 p.m. Intermediate Bridge Class  
6:45 p.m. Chicago Bridge

**Clubhouse II**

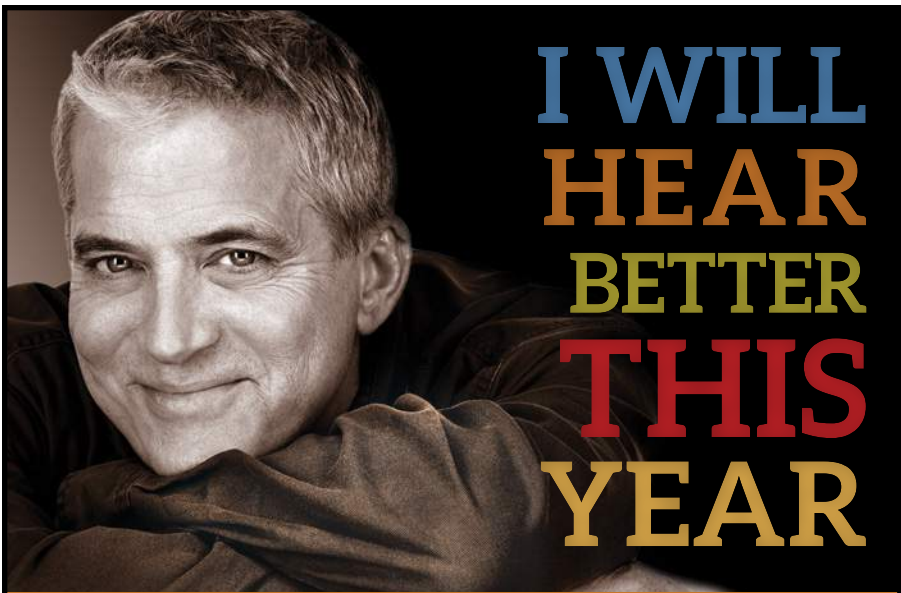
11:00 a.m. Mild Exercise Class  
1:00 p.m. Chess Club  
1:00 p.m. Ping Pong Club  
1:00 p.m. Aqua Fit Class

**Thursday, February 1**

**Clubhouse I**

9:15 a.m. Stretch and Tone Class  
10:00 a.m. Painting is for Everyone Art Class  
10:30 a.m. Essential Tremor Group  
10:30 a.m. Beginner Stretch and Tone Class  
11:00 a.m. Writers Worskhop  
12:30 p.m. Ladies Bridge  
3:00 p.m. Stamp Club





At Hearing HealthCare, Inc., we truly believe that **better hearing leads to a better life.**

Call today to schedule an appointment. **301.637.7238**

**\$500 OFF**

an AGX5, 7, or 9 two-device system.  
Expires 3/31/18.

Call today for a  
**COMPLIMENTARY  
CONSULTATION**

Expires 3/31/18.



**Hearing HealthCare, Inc.**

*Doctors of Audiology*

*Serving the community since 1996*

**Wheaton • 3913 Ferrara Dr**

**Rockville • 2403 Research Blvd, Ste 100**

**HearingHealthCareInc.com** 

 AudigyCertified™

#### Clubhouse II

9:00 a.m. Senior Sneakers Class  
10:00 a.m. Stitching Group  
11:00 a.m. Water Exercise Class  
12:30 p.m. Men's Bridge  
1:00 p.m. Non-impact Fusion Water Exercise Class  
1:00 p.m. Gilbert and Sullivan Society  
6:30 p.m. Pickleball Party

#### Friday, February 2

#### Clubhouse I

10:00 a.m. Drawing Clinic Art Class  
12:15 p.m. Kiwanis Club  
1:30 p.m. Any Level Watercolor Techniques Art Class  
2:30 p.m. Beginner Bridge Class  
3:00 p.m. Hispanos de LW: Games  
7:00 p.m. Friday Duplicate Bridge

#### Clubhouse II

1:00 p.m. Ping Pong Club  
1:00 p.m. Chess Club  
1:00 p.m. Friday Bridge  
1:00 p.m. Zumba Gold Class

#### Saturday, February 3

#### Clubhouse I

9:00 a.m. Gentle Yoga Class  
10:00 a.m. American Needlepoint (ANG)  
10:00 a.m. Open Art Studio  
6:00 p.m. Lions Club Program

#### Clubhouse II

9:15 a.m. JRLW Services  
2:00 p.m. Going It Alone Club: Social

#### Sunday, February 4

#### Clubhouse I

No Scheduled Activities

#### Clubhouse II

2:00 p.m. Fireside Forum

#### Monday, February 5

#### Clubhouse I

9:15 a.m. Stretch and Tone Class  
10:30 a.m. Beginner Stretch and Tone Class  
1:00 p.m. Paintbrush and Knife Art Class  
1:00 p.m. CLL General Meeting  
1:30 p.m. LW Chorale

#### Clubhouse II

7:00 p.m. Bingo  
9:00 a.m. Senior Sneakers  
10:00 a.m. Clipper Workshop  
10:30 a.m. Zumba Gold Class  
12:30 p.m. Men's Bridge  
1:00 p.m. Chess Club Class  
2:00 p.m. Line Dance Class  
3:00 p.m. Line Dance Class  
4:00 p.m. Ba Duan Class

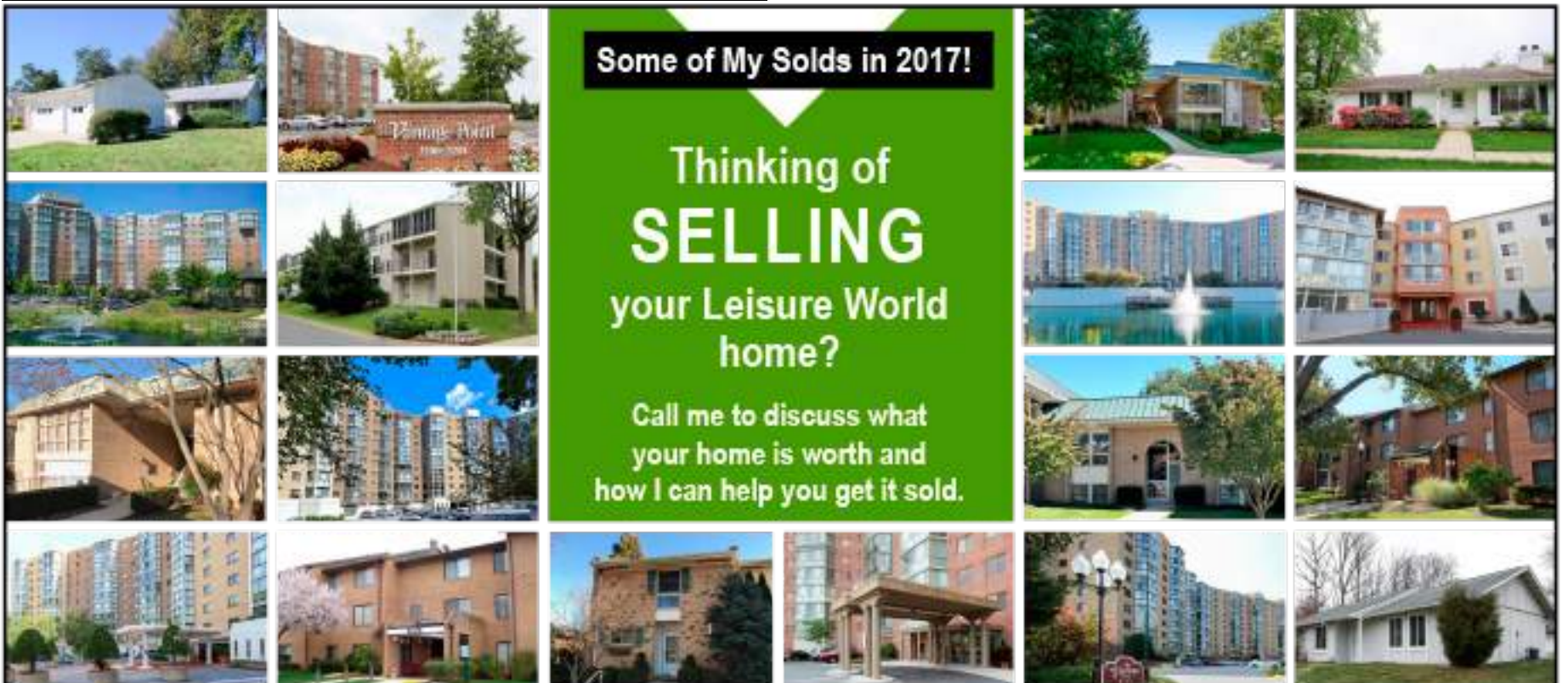
#### Tuesday, February 6

#### Clubhouse I

9:00 a.m. Blood Pressure Testing  
9:30 a.m. Any Medium Art Class  
10:00 a.m. CLL: MLK In His Own Words Class  
1:00 p.m. CLL: Fluvial Geography: Rivers of The World Class  
1:00 p.m. Watercolor Techniques Art Class  
7:00 p.m. Duplicate Bridge  
7:00 p.m. Trivia Group

#### Clubhouse II

9:30 a.m. Beginner and Advanced Tai Chi Class  
11:00 a.m. Water Exercise Class  
11:00 a.m. Mild Exercise Class  
12:30 p.m. Scrabble Group  
1:00 p.m. Non-Impact Fusion Water Exercise Class  
1:30 p.m. Comedy and Humor Club  
6:15 p.m. Move to the Beat Class  
7:00 p.m. Camera Club



**Some of My Solds in 2017!**

Thinking of  
**SELLING**  
your Leisure World  
home?

Call me to discuss what  
your home is worth and  
how I can help you get it sold.

- Professional Photography & Video
- Home Staging & Repair Coordination
- 4 Page Glossy Property Brochures
- Weekly Listing Updates
- Weichert Top Producer
- Licensed Leisure World® Specialist
- Extensive Marketing Background



**Barbara Michaluk | Weichert**

**Authorized Leisure World® Specialist**

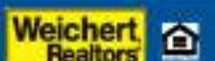
**Phone Direct 240-506-2434 (o) 301-681-0550**

Senior Real Estate Specialist® | Certified Staging Agent®  
Internet Marketing Specialist® | Relocation Specialist® | E-Pro® Certified

**www.BarbaraSellsMDhomes.com | email: michaluk@verizon.net**



Check out my 5 Star Reviews on [zillow.com](http://zillow.com) & [google.com](http://google.com)





# A NEW YEAR FOR NEW BEGINNINGS

## ASPENWOOD SENIOR LIVING COMMUNITY

14400 Homecrest Road  
Silver Spring, MD 20906

**301-598-6424**

Live new adventures every day when you make **Aspenwood Senior Living** home. Join us for a tour of our beautiful community and see how our Five Star lifestyle is perfect for a new beginning this year.

### DISCOVER:

- Five Star Dining Experience, featuring Signature recipes
- Area's only Independence Plus lifestyle
- Lifestyle360 program for a full schedule of activities
- Five Star Health & Wellness programs to keep you in shape
- Exceptional senior living experiences

**Call 301-598-6424 to discover your new beginning.**



[www.AspenwoodSeniorLiving.com](http://www.AspenwoodSeniorLiving.com)

INDEPENDENT LIVING • AREA'S ONLY INDEPENDENCE PLUS  
ASSISTED LIVING



©2017 Five Star Senior Living





# CLASSIFIEDS

THE LEISURE WORLD of Maryland NEWS reserves the right to reject or discontinue any advertisement believed inimical to the best interest of Leisure World. We shall accept advertising on the same basis as other reputable publications: that is, we shall not knowingly permit a dishonest advertisement to appear in the Leisure World of Maryland News, but at the same time we will not undertake to guarantee the reliability of our advertisers.

## ESTATE SALES

CASH FOR ESTATES; whole apartment contents, whole house contents, storage lockers. Buy out/clean up. atticlc.com Gary – (301-520-0755).

ATTIC TO BASEMENT ESTATE Cleanouts LLC - I provide honest and confidential estate cleanouts with reasonable rates. I assist executors, family members and guardians with a personal touch. I will save you time and money providing fast and efficient service. I work with local auction and hauling companies. Please call or email me to set up an appointment Janet Ray (301-384-3198), (wishalot10@aol.com).

MOVING SALE: Monday, Jan. 22 and Tuesday, Jan. 23, 11 a.m.-5 p.m. Dining room set, Grandfather clock, small sofa, other odds and ends. 15115 Interlachen Dr. #122. Contact Tony (703-431-9438).

## REAL ESTATE FOR SALE

A WISE CHOICE. Call me. Marilyn Rubinstein of Weichert Realtors. Your expert in this great community. Top 1% Nationwide. #1 Office Producer with over 40 years of experience and hundreds of sales right here. Call me for a free market analysis. Please call and we'll talk. I make buying or selling an enjoyable and successful experience. Call Marilyn today (301-674-1288).

JUST LISTED IN THE GREENS – Rare first floor 2 bedroom condo with direct access to large patio from living room and kitchen – perfect for those who don't like heights! Cherry kitchen cabinets and beautiful new wood floors, lovely! Contact Lorraine Gottlieb with RE/MAX Realty Services at (240-731-7885) or (lorrainegottlieb20854@gmail.com).

LOVELY UNIT WITH OPEN FLOOR PLAN in Vantage Point East with garage. Hardwood floors, granite countertops, fresh paint, extra-large enclosed balcony with beautiful view! Call Greg or Eve Marinik of Long and Foster Real Estate (240-994-5258), (301-221-8867), (301-548-9700). \$325,000.

THINKING OF BUYING OR SELLING? Call Sue Heyman of Weichert Realtors, Leisure

World Plaza, community resident for over 14 years! See MY CURRENT ACTIVE LISTINGS in the ads below: CREEKSIDE MID-RISE, “H” MODEL w/x-large garage space, 2BR+den, 2FB, luxury living, end unit, multiple exposures, hardwood floors, exquisite kitchen w/granite & open to DR, windows in kitchen & DR, enclosed balcony w/ceiling fan, decorative moldings, gas heat, 1717 sf, \$439,900. Sue Heyman, Weichert, Realtors, direct (301-580-5556), office (301-681-0550).

FAIRWAYS HI-RISE CONDO, “E” MODEL, 2BR, 2FB, fresh paint, new carpet, new cabinets & granite kitchen counters, enclosed balcony with view of fountain & pond, 5th floor, midway down hall, all electric, 980 sf, \$159,900. Sue Heyman, Weichert, Realtors, direct (301-580-5556), office (301-681-0550).

GARDEN APARTMENT CONDO, elevator building, 2BR, 2FB, fresh paint, ranch kitchen w/new fridge & faucet, large laundry room, enclosed balcony w/wooded view, all-electric home, most utilities included, 1043 sf, \$138,900. \*\*Look for the display ad of MY 2017 TRANSACTIONS in this edition. Call with any questions, for your free community booklet & tour, or for a free competitive market analysis. Sue Heyman, Weichert, Realtors, direct (301-580-5556), office (301-681-0550).

## REAL ESTATE WANTED

SELL AS IS: If you're feeling overwhelmed due to family or financial issues we can help. We are interested in paying cash to purchase your “as is” home in Leisure World. We will work with you to help sort through your belongings. Once you pick the items you wish to keep, we will help to pack these items and move them for you. We will buy the entire contents and take care of the sorting, donating and emptying the place out for you. You'll save time and money and can just walk away! No need to paint, repair, clean, carpet, etc. and you won't have to pay real estate commissions. If you need our help, just call Debbie (301-204-5067) or Steve (301-275-2560).

## REAL ESTATE FOR RENT

CREEKSIDE, MODEL G, huge 2 bed/2 bath in sought-after building. Many social activities. Last week in January free to early tenant. \$2,000/month. Call agent Andrea Essex, L&F, at (202-744-6770) for appointment to show.

BEAUTIFULLY RENOVATED 1 Bed/1 Bath with great golf course views on the 7th floor of Fairway South available for rent. Please call David at (301-996-8333).

GARDEN TWO BEDROOM, two bath condo available for lease now. Premier Community of Leisure World of Maryland for adults 55 plus! This condo features new flooring, fresh paint, side-by-side washer/dryer. Living room and patio with a spectacular view. Call (301-598-4850) to schedule an appointment to see this exceptional home. No smoking! Pets considered, your worn parking space, utilities and basic cable included.

LOVELY 3 BEDROOM and 2 full bath unit in low rise building with elevator. Hardwood floors, updated appliances updated countertops, laundry room with full sized washer and dryer. Call Greg Marinik (240-994-5258) or Eve (301-221-8867), Long and Foster Real Estate Office (301-548-9700). \$1695.00.

## APARTMENTS TO SHARE WANTED

WANTED – ROOM OR SMALL APARTMENT TO RENT: I am interested in renting a room, or taking care of an apartment in LW for at least one month—renewable if all parties agree. I would like to get a better idea of living at LW before buying or renting long-term. I am impeccably neat, do not smoke and am willing to help out. I like to cook simple meals and never leave a dirty dish. Can provide names of current LW residents and other references and am happy to answer any questions. Please contact me at (ducahart@hotmail.com) or call (301-455-7023). Donaldo Hart.

QUIET, EASY GOING HEALTHY WOMAN needs room in home. Use kitchen but spend time in room writing spiritual work or traveling. 8 years in LW. Bette (301-922-0437) or (Bette@lightbodysong.com).

ROOM WANTED: I'm a 70-year-old black male. My name is William Malone. Very neat and clean. Presently employed as a Court Process Server. Work (301-251-1318); home/cell (240-603-8131).

## FOR SALE

POWER LIFT RECLINER CHAIR. New condition, barely used, dark brown leatherette, located in Creekside. Price \$395. Call (301-938-5874) for information.

## AUTO SALES

2008 Grand Marquis LS with leather. MD inspected. Like new. Only 25,000 miles \$12,000. I will buy your car even if you don't buy mine. Dealing with Leisure World for 38 years. Licensed and bonded. Cash or cashier's check for your car, van or truck. Please call Marty Salins at Auto Plaza (301-325-1973).

## TRANSPORTATION SERVICES

YOUR PERSONAL DRIVER IS HERE: Lifelong local resident. Reliable, competent service. Comfortable, clean vehicle, can seat from 1 to 6 passengers. Airports, cruiseports, theatres, casinos, appointments... Anywhere, anytime, including long distance trips to other states. Call with questions: Steven Saidman, cell/text (301-933-8899), email (Steve.Your.Driver@gmail.com).

CALL & RIDE – Doctors, airport, casino. Will pick up your groceries. Always on time. Over 50 satisfied customers from Leisure World. Larry Kraft (240-743-8287).

## HEALTH CARE SERVICES

The Leisure World News will allow only those advertisers who show proof of certification to advertise that they are “certified nursing assistants.”

“A” HOME HEALTH CARE for Senior Citizens – Care you can trust and is affordable. Reliable and qualified aide and nursing staff available. Companionship, personal care, meds, housekeeping, shopping, driving. Full/part-time or live-in. Flat rate for live-in care. Call (240-533-6599).

ELDERLY CARE: Over 10 years experience. Great reference. Available for long days or nights. Can drive. Leisure World resident. (240-461-2188).

HOME HEALTH CARE/Caregiver: Senior citizens, CNA. Work 10 years in LW. Grad, BSN (Filipina nurse). Roman Catholic. Culinary grad in Europe. Speak different languages. Schooling for nutrition. Work long/short term. Call Connie at (240-449-6362).

CNA –25 years experience. Loving, caring, reliable, looking for full or part-time work. Live-in or -out. Call (240-354-5372) or (301-306-0073).

CERTIFIED NURSING ASSISTANT. Over 25 years experience. Proficient in elder care and hospice care. Skilled in listening and paying attention to my clients' needs. Honest, trustworthy. Has reliable transportation. Call (202-805-6212) or (240-714-3657).

MATURE LADY who speaks Russian and Ukrainian is looking for caregiver opportunities. Cooking and light cleaning can be provided. Live-in with a few days off per week is preferred. Caregiver has legal status and is a responsible, hard worker. Call at (443-794-5867).

EXPERIENCED, CARING CNA with CPR certificate seeks live-out position, Monday-Friday, 8-12 hours a day. Call Millie at (301-742-5386).



INDEPENDENT CONTRACTOR for licensed caregiver (GNA). 15 plus years work experience in a nursing home, assisted living, home support and private duty care and companionship. Understand clients’ challenges. Very friendly with flexible schedule. Hours: 6-12 hours, Monday-Friday. Contact Florence at (240-277-5053). Reference available upon request.

CAREGIVER SEEKING employment. Weekly, daily or hourly. References available. Call (301-379-4158) or (954-554-3490).

LICENSED CNA. Reliable and loving, caring person providing quality and affordable care. Day or night, 2-4 hours. Overnight, flat rate. Call Neema (240-687-7471).

LOVING, CARING PERSON. Have worked in Leisure World for 10 years. I am looking for a Full-time job, Monday-Friday. LW reference. Please call Alice (240-839-0087).

AIDE ASSIST & CARE “Caring for Today for a Brighter Tomorrow.” Licensed CNA, CMT, CPR/first aid, food handlers. Services: companionship, errands, dr. appts, cooking, cleaning and everyday care. No job is too big or too small. Please call for further details and pricing. (240-573-6184) E. Scott

NURSING ASSISTANT, first aid, CPR. Four years experience as a caregiver. (412-519-7422) Graduated from Montgomery College in applied science December 2017.

**ASSISTED LIVING**

ASSISTED LIVING SERVICES - Go to (www.wellnesstouch.biz). A safe, economical, peaceful and clean home in the Olney - Cloverly area. MD licensed since 2010. For a consumer report, view (Caring.com). Ask about our 1st year discount. Call (301-525-8087).

2 RN’s ASSISTED LIVING LLC – Care beyond call of duty. Just opened our new Assisted Living. Operated by experienced, registered nurses. Accepting a few new residents. Licensed level care 1, 2, 3. Tel. (301-338-4015) or (240-221-3318). Email: (patyusingco@yahoo.com).

**GENERAL SERVICES**

ALTERATIONS - 30 years experience in Leisure World! Men’s & woman’s garments picked up and dropped off at your convenience. Very competitive prices. Call Mimi (301-990-6468).

KITCHEN AND BATHROOM Remodeling – Cabinet and countertop replacement, and bathtub to accessible shower conversions. Please call Joe at JML Remodeling. (301-598-8400). Serving Leisure World since 1988. MHIC# 36674. Thank you.

SMALL JOBS WELCOME! Picture

hanging, moving boxes, carpet stretching, assembling furniture (example: IKEA), adjusting bathroom fixtures, hanging curtain rods, resetting closet doors, general painting. Need something else? Please ask Jesse (301-747-5054).

RELIABLE, EXPERT HANDYMAN: painter, carpenter, tile-setter. Licensed and insured. Affordable prices. No job too big or too small. Extensive experience and references at Leisure World. Please call Carolos Gomez (301-305-4727).

“STAIR LIFTS: Never walk up steps again! Buy new or certified pre-owned stair lifts at reduced prices. Installation, lifetime warranty and free service contract included. Call (301-448-5254).

CONTINENTAL MOVERS. Local moving services. Free boxes. Local – long distance – hauling – pick-ups and deliveries. \$80 x two men, one hour driving time. (202-438-1489) (301-340-0602) (Cmora53607@msn.com) (www.continentalmovers.net).

TIRED OF POLISHING your silver? Turn it into cash, which does not tarnish. I will come to your home and give you a free evaluation of what I can pay. I buy all gold and silver jewelry, including broken pieces, all sterling silver, gold and silver coins, gold watches, etc. I am licensed with both Maryland and Montgomery County (lic. #2327). If you decide to sell, I can buy your items at that time, but there is no obligation. Call Bob, Gold 4 Good, 8241 Georgia Ave., Ste. 100, Silver Spring, MD 20910 (240-938-9694).

DAHLSTROM SENIOR SUPPORT SERVICES. Assistance with Senior Care and the Care of Senior’s Pets. Safe/Reliable door-to-door transportation as needed. General assistance to help maintain independence. Assistance with Pet Care. Dog walking and sitting during short hospital stays, vacations, or as needed. Transportation for grooming/vet appointments. I am a 55-yr. old semi-retired Doctor, Leisure World Resident and dog, cat, bird lover. Bonded, insured, reasonable rates and outstanding Leisure World references. Call Carl (410-499-9362).

**CLEANING SERVICES**

R&G CLEANING SERVICES –Small, family-owned business catering to you and your household needs. Friendly, reliable and trustworthy with many years of experience. Reasonable rates and flexible hours. Licensed and insured. Help with household organization. Free estimate with appointment. Call (301-442-5032).

ALICIA’S CLEANING SERVICES – Good references. Good rate. Once a week or every two weeks. (240-286-3807)

HOUSE CLEANING – 22 years experience. Worked in LW for

10 years. Reliable, honest, great references. I live in Aspen Hill. Call Alice (301-946-5996) or (301-520-0074).

HOUSE CLEANING AND ADDITIONAL SERVICES: Kind and honest; good references from Leisure World residents, experienced, great work. I clean bathrooms, kitchens, dust, mop and vacuum rooms, offices, den, deck – condos or apartments. I also provide additional services as you might need. (240-476-2574) Ivone.

HOUSE CLEANING BY JOY: Weekly, bi-weekly, monthly, one time move in/move out. Reliable. Reasonable rates. Quality work serving area over 10 years. (240-393-9863)

**COMPUTER HELP**

COMPUTER SERVICES – Problems with your PC or Network? Computer Systems Engineer will come to you with help. Home, Business. Call David G. (301-642-4526).

A+ COMPUTER SERVICES. Free in-house diagnostic of your computer, printer, or basic set-ups. A+ certified, virus removal, back up, and retrieve important data, photos, and music. Have served over 400 clients in leisure World. Also will teach lessons on Microsoft Office and basic computer skills at your home. Alex Nowrouzi, (301-312-2277). I reside in Leisure World.

COMPUTER LESSONS / SERVICES - Need help with your computer or other digital devices in your home? Tablets, smartphones, smart TVs and more. Computer training, new computer setup, troubleshooting. Lessons at your residence at your convenience. Learn basic computer, email, surfing the web, digital photos. Patient trainer will sit by your side and teach you in plain English - no technical talk! Shopping assistance for all electronic and computer items. Senior specialist since 1996. Senior discount. Call David at (301-980-5840). COMPUTERTUTOR

**PERSONAL SERVICES**

PRESERVE YOUR FAMILY MEMORIES! Don’t let your precious photos be forgotten or fade over time. I’ll transfer your photos, slides, and mementos to a CD so they can be easily shared with friends and family. Once they’re scanned, I can label the photos to identify the people in them, or bring your photos to life in a memorable DVD slideshow. Call Kim at Virtual Computer Services (301-438-3140).

NOTARY, residing in Leisure World. I offer my service free of charge to Leisure World residents. Can come to your home if needed. (301-379-9694).

PAT’S SENIOR SERVICES – (Leisure World resident) companion/aide, driver, errand runner, housekeeper and offering nutritious juicing and meals. Could lead to fulltime in the future. Call Pat 301-598-1496 or 240-475-5288.

GUITAR, PIANO, VOICE lessons! It is never too late to learn! Beginner and intermediate welcome! Call Wendy (LW Resident!) at (301-938-4922) or email at (awdmf@aol.com).

PIANO LESSONS exclusively for LW residents and their extended families, all ages, from a fellow LW resident, Julliard schooled. New starters, early beginners, intermediates and advanced. Let your creativity shine. Call Ken Keys (508-612-9647, leave message).

LICENSED BEAUTICIAN. It is my pleasure to give you haircuts, color and perms in your home. Reference available Please call Silvia, (240-277-0890).

**PET CARE**

DOG WALKING, cat sitting, birds. Daily drop-ins or vacations, overnights by mature animal lover with 10 years experience. Medication or insulin as needed. Call Eileen (301-442-3989).

**VOLUNTEER OPPORTUNITIES**

MAKE A DIFFERENCE in a family’s life. Habitat for Humanity ReStore needs volunteers to work in its ReStore. Volunteers are a vital part of our organization and we need you to be a part of our team. We especially need daytime volunteers who can take a regular shift of 3-4 hours. Shifts typically are 9 a.m.-1 p.m., 1-5 p.m., or 3-6 p.m. ReStore has two locations – Rockville and Silver Spring. E-mail (alena.biagas@habitatmm.org) or call (301-990-0014 x 16) to get started. Volunteers can start after watching a short video and filling out an application.

VOLUNTEER WITH REPRESENTATIVE PAYEE! Representative Payee helps low-income persons with disabilities manage their finances. Each volunteer is matched with a client who needs help with budgeting, paying routine bills and keeping track of financial matters. Interested volunteers should contact the Volunteer Coordinator (301-424-0656, ext. 541) or (volunteer@mhamec.org).

VOLUNTEER AS A HOTLINE CALL COUNSELOR with the Montgomery County Hotline! The Montgomery County Hotline is a 24-hour, 7 day a week confidential service. Counselors provide supportive and confidential listening; crisis prevention and intervention; and give information, referrals and resources. Training Course starts March 11. Contact (volunteer@mhamec.org) or (301-



424-0656, ext. 541) if interested.

**MUSEUM GUIDES** – at the Montgomery County Historical Society. Work two weekday afternoons or one weekend afternoon per month from noon to 4 p.m. Receive on-the-job training on local history and museum interpretation. Also receive special admission to programs and a 20% discount in the Museum Shop. Contact Amada Elliott, Education & Outreach Coordinator, (301-340-6534) or (aelliott@montgomeryhistory.org).

**MEALS ON WHEELS** is looking for caring and dedicated volunteers to deliver meals to homebound and disabled individuals in the Leisure World area. Service area includes: Leisure World, Olney, Wheaton, Sandy Spring. Please contact Emily Trotter at (443-573-0925) or email (trotter@mowcm.org).

**MEALS ON WHEELS (MOW)**, which runs out of the Inter-Faith Chapel site, needs more volunteers

to deliver meals. If you have or know someone who has one and a half to two hours every other week or one time a month and might be interested in serving in this capacity, please contact (410-730-9476).

**KOSHER MEALS ON WHEELS**, sponsored by JSSA, needs volunteers to deliver nutritious meals to homebound seniors. Volunteers will pick meals up at the Hebrew Home in Rockville and deliver them to seniors in Montgomery County. Schedule is flexible. Call Diane Hays-Earp at JSSA, (301-816-2639).

**THE SENIOR CONNECTION** needs volunteers who live in the 20906 zip code area to drive seniors to medical appointments and help with grocery shopping. Schedules are flexible and just 2-3 hours a month can make a difference! Training and liability coverage are provided. Call (301-942-1049) or contact (volunteer@seniorconnectionmc.org) to learn more.

**HELP A CHILD!** In just 1-2 hours a week you can make a difference in a child's life. Volunteers provide friendship and encouragement, help with reading, offer homework assistance, and engage in crafts and cultural activities at schools near Leisure World. For more information, contact Interages at (301-949-3551) or (interages@AccessJCA.org).

#### NOTICES

**KEEPING SENIORS SAFE - KSS.** Morton A. Davis, coordinator and resident of Leisure World is available to discuss theft prevention, driving and shopping habits, frauds, home safety inspection and property crimes to any organization. The program is part of the Montgomery County Police Department Volunteer Resource Section. Morton can be reached at (301-318-0681) or (mortonadavis@comcast.net).

**PRAYER CHANGES THINGS.** You are invited to join "Hannah's Prayer Circle" here at LW. For more information, call Evangelist Connie Blake at (301-438-2667).

**ARE YOU INTERESTED** in antiques and collectibles? Join a small group who study and also explore historic landmarks. For more information, call (301-598-0158).

#### UPCOMING EVENTS

**YOGA FOR CAREGIVERS** of Men and Women with Dementia: Yoga helps men and women with dementia and their caregivers. This workshop utilizes yoga as a way to connect with the person with dementia, and for caregivers to practice selfcare. All levels of students are welcome. Register here: (<http://www.willowstreetyoga.com/workshops/the-spirit-is-still-there-yoga-for-caregivers-and-family-of-men-and-women-with-dementia-with-cheryl-kravitz/>)

**FINANCIAL LITERACY WORKSHOP:** Increase Cash Flow and Debt Management, Saturday,

Jan. 27, 3-4:30 p.m. at Twinbrook Library, 202 Meadow Hall Dr., Rockville, MD 20851. Seniors: Discover \$100-\$200 that you didn't know you had. Apply the principles of debt roll-up to get out of debt sooner! First in a series of workshops presented by the Heartland Institute of Financial Education. Each workshop can be taken separately and independently. Free. Registration is recommended but not required. Registration ends Jan. 27 at 2:55 p.m. To register, go to (<http://bit.ly/2Cbp2Ee>).

#### WANTED

**FAST CASH FOR USED CARS** - Big dollars paid for your used car! Over 43 years experience serving Leisure World. Leave message 24 hours. I will come to you. Cash or cashier's check at your request. I can also help with your new car purchase, any make or model! Md. Dealer #U2927. Call Marty Salins (301-325-1973).

**WILL BUY MILITARY**, WW2, WW1, Civil War, memorabilia items. Uniforms, Weapons, Helmets, Photos, Medals, or any other items associated with US, German, Japanese or other military history. Call Dave (240-464-0958) or email (obal7@aol.com).

**CASH FOR RUGS:** oriental rugs, any condition. European, Asian, Navajo, etc. (atticllc.com) Gary (301-520-0755).

**HOUSING UNLIMITED, INC** is a non-profit organization that provides housing for people in mental health recovery. We accept furniture and housewares that are in good condition to furnish our homes. We do pick up. The Housing Unlimited office is (301-592-9314). Thank you.

**CASH FOR JEWELRY:** gold, silver, costume, diamonds, coins (including foreign), watches, stamp collections. (atticllc.com) Gary (301-520-0755).

**TURN YOUR STERLING SILVER** and old gold jewelry into cash and do something good for yourself. Gold 4 Good (8241 Georgia Ave., Ste. 100, Silver Spring, MD 20910) buys gold and silver jewelry, including broken pieces, all sterling silver, gold watches and gold and silver coins. I will come to your house and give you a free evaluation of what I can pay. If you decide to sell, I can buy your items at that time, but there is no obligation. Licensed with both Maryland and Montgomery County (lic. #2327). Call Bob (240-938-9694).

**WANTED: FIREARM COLLECTIONS**, one piece or one hundred, licensed local dealer will come to you. Contact Richard Thornley at (301-253-0425).

**Special Sale - Buy 1 Meal and get the 2nd Meal Half OFF!**

# CHEF ON THE RUN®

**301-990-7727**

**WE DELIVER!**

## EXPANDED MENU

**A HEALTHY ALTERNATIVE WITH OUR NEW MENU ITEMS.**  
**Too Tired to Cook? No Time to Cook? Let us prepare delicious meals for you. We deliver fresh food daily, very reasonable rates. No boring food. Only food with a bit of love sprinkled in. Gift certificates are now available. Ask for Dina.**

**Errand, shopping and companionship services also available!**



Kathleen Kane, Assoc. Broker

## *Kathleen and Eileen Kane*

**Honored To Serve You For 35+ Years With  
Cathy Gilmour Real Estate And Proudly Continuing That  
Same High Level Of Service With Long & Foster**

**A** – Gorgeous view from enclosed balcony of this spacious 1 bedroom, 1 bath apartment on the 7th floor in **Fairways South**. Table space kitchen, fresh paint and new wall to wall carpet, just waiting for your updates to make it perfectly yours. **\$120,000**

**F** – In **Villa Cortese**, Building 2 on the 4th floor, 2 bedrooms, 2 full baths, den, living room, formal dining room, table-space kitchen, enclosed balcony. Large garage space! California closets! Engineered wood floors! **\$345,000**

**B** – In **Turnberry Courts**, Building 3 on the 5th floor, two bedrooms, two baths, living room, dining room, table-space kitchen,

enclosed balcony, light and bright.

**Elizabeth** – Largest apartment in **Montgomery Mutual** (over 1300 sq. ft.). Two bedrooms, 1-1/2 baths, grand living room, dining room, windowed kitchen looks out to atrium. Freshly painted and ready for you to move in. **\$125,000**

**SELLERS** – This is YOUR market! Inventory of homes is low and interest rates remain low. This is the time for you to make the move you've been planning. Contact Kathleen or Eileen to assist you.

**BUYERS** – With low inventory & still very low interest rates, now is the time to put your house on the market and move to Leisure World.



Eileen Kane, Assoc. Broker

*Dedication makes  
the difference!*

# LONG & FOSTER REAL ESTATE, INC.

Residential & Commercial Real Estate • Mortgage • Title • Insurance • Property Management



Direct: 240-460-8647

Leisure World Plaza Office: 301-598-7500

Kathe.E.Kane@Gmail.com



# Learn about senior living at **Riderwood**.



Request your FREE brochure from  
the premier retirement community in  
Silver Spring. Get the facts about our  
vibrant lifestyle, stylish apartment  
homes, expert health care,  
and so much more!

There's no risk in learning more!  
Call **1-800-989-6177** or visit **RiderwoodCommunity.com**.



Silver Spring  
[RiderwoodCommunity.com](http://RiderwoodCommunity.com)





# The Karen Rollings Team



**Karen Rollings**



**Kathy Workman**



**Sherry Felice**

**301-924-8200**

**www.TheKarenRollingsTeam.com**

BH  
HS  
BERKSHIRE HATHAWAY | PenFed Realty  
HomeServices

3410 N High St  
Olney, MD 20832  
301-260-7700



## Recent Solds "Around the World"!

Address	Subdivision	Type	Beds	Baths	Asked	Got	Subsidy
3330 LEISURE WORLD BLVD #5-729	FAIRWAYS SOUTH	Hi-Rise 9+ Floors	1	1	\$114,000	\$108,000	\$1,000
15115 INTERLACHEN DR #3-201	LEISURE WORLD	Hi-Rise 9+ Floors	2	2	\$184,500	\$175,000	\$0
15300 BEAVERBROOK CT #88-2A	LEISURE WORLD	Garden 1-4 Floors	3	2	\$168,000	\$168,000	\$500
3480 GLENEAGLES DR #79-C	MONTGOMERY MUTUAL COOP	Townhouse	2	3	\$144,900	\$145,000	\$0
3322 CHISWICK CT #61-3F	MONTGOMERY MUTUAL COOP	Garden 1-4 Floors	2	1	\$85,000	\$80,000	\$0
3378 CHISWICK CT #52-2E	MONTGOMERY MUTUAL COOP	Garden 1-4 Floors	1	1	\$69,000	\$68,000	\$0
3501 SOUTH LEISURE WORLD BLVD #31-1D	MONTGOMERY MUTUAL COOP	Garden 1-4 Floors	2	1.5	\$115,000	\$115,000	\$0
3642 GLENEAGLES DR #10-1E	MONTGOMERY MUTUAL COOP	Garden 1-4 Floors	1	1	\$55,900	\$52,000	\$0
3100 LEISURE WORLD BLVD #621	OVERLOOK	Hi-Rise 9+ Floors	3	2.5	\$520,000	\$520,000	\$0
15033 WESTHOLM CT #274-B	ROSSMOOR MUTUAL #12	Quad	2	2	\$157,900	\$160,000	\$0
15002 CANDOVER CT #278-C	ROSSMOOR MUTUAL #12	Quad	2	2	\$150,000	\$150,000	\$0
15301 WALLBROOK CT #48-3F	ROSSMOOR MUTUAL #15	Garden 1-4 Floors	1	1.5	\$98,000	\$98,000	\$1,500
15115 INTERLACHEN DR #3-321	THE GREENS	Hi-Rise 9+ Floors	3	2.5	\$269,900	\$269,900	\$0
15101 INTERLACHEN DR #1-518	THE GREENS	Hi-Rise 9+ Floors	2	2	\$205,000	\$205,000	\$6,050
15115 INTERLACHEN DR #3-411	THE GREENS	Hi-Rise 9+ Floors	1	1	\$122,500	\$122,500	\$2,800
15107 INTERLACHEN DR #2-304	THE GREENS	Hi-Rise 9+ Floors	2	2	\$205,000	\$205,000	\$0
15107 INTERLACHEN DR #2-619	THE GREENS	Hi-Rise 9+ Floors	2	1.5	\$119,900	\$121,900	\$0
15107 INTERLACHEN DR #2-616	THE GREENS	Hi-Rise 9+ Floors	1	1	\$125,000	\$117,000	\$0
3005 LEISURE WORLD BLVD #503	TURNBERRY COURTS	Hi-Rise 9+ Floors	2	2	\$249,000	\$249,000	\$2,500



**UNDER CONTRACT!!!**

### **15100 Interlachen Drive, #126**

2 Bedroom, 2 Full Bath condo with stunning views of the golf course!!



**UNDER CONTRACT!!!**

### **15300 Beaverbrook Court, #88-1H**

2 Bedroom, 2 Full Bath condo with fresh paint and new carpet!! Enjoy wooded views from kitchen!



**UNDER CONTRACT!!!**

### **3123 Farnborough Court, #259-B**

Our buyers found the perfect new place to call home! Call us TODAY to see how we can help you!



MORTGAGE LOAN OFFICER  
Office (240) 403-1972  
skeenum@monarchmortgage.com  
600 Jefferson Plaza Suite 400  
Rockville, MD 20852  
NMLS # 459670



Monarch is proud to have been named "5-Star Superior Banking Institution"

### **Scott Keenum**

- ✓ Resident of Leisure World & represented Leisure World at the Maryland Senior Olympics winning a Silver Medal in Pickleball
- ✓ U.S. Army Veteran
- ✓ 30 Years of Experience in the Mortgage Industry



## Need New Carpet?

Serving Montgomery County for 30 years! We are the company for all your flooring needs. Carpeting, Hardwood, Laminate, Ceramic, Marble, Commercial, Residential. We do it all! We carry major brand names in carpeting and hard surface flooring.

**Trust our experience and knowledge of the industry.**

**301-924-7331**

18167 Village Center Drive  
Olney, MD 20832  
(in the Olney Village Center)

[www.carpetandvacuumexpo.com](http://www.carpetandvacuumexpo.com)

CARPET & VACUUM  
**EXPO**

**\$100**  
**off installation!**  
**301-924-7331**

only for purchases over \$1000. Offer not valid with any other offers.