

Leisure World News

OF MARYLAND

February 16, 2018 • Published Twice a Month • residents.lwmc.com

After a Challenging Year, Social Services Department Finds New Inspiration



From left, licensed clinical social workers Ann Johnson, Susan Montgomery, Wilma Braun and Sandy Hart. Photo by Stacy Smith, Leisure World News

by Stacy Smith, Leisure World News

In a quiet back hallway of the MedStar Health medical center building, four unsung women work with compassion, sensitivity and resourcefulness to help the approximately 20 percent of Leisure World households who use their services.

Department director Susan Montgomery, 19-year department veteran Wilma Braun, Sandy Hart and Ann Johnson are the four licensed clinical social workers that make up Leisure World's close-knit Social Services Department.

"It's not just four social workers; it's a unit," Johnson said.

They remain largely out of

the spotlight – a person can't point to their handiwork, or physically touch its results – and yet their dedication is evident each time a resident is helped by them to live a more safe, happy and independent life.

Their services, which include everything from conducting in-home visits, to helping residents enroll in Medicare Part D insurance coverage, to crafting a medical power of attorney, are free, confidential and available to all residents. One need not be a MedStar Health patient to benefit from their assistance.

The department also engages in community outreach by

► to page 3

Residents Honor 'Greatest Generation' Veterans with Musical Tribute

by Stacy Smith, Leisure World News

A hush falls over a darkened clubhouse auditorium. Through the stillness, a single voice warbles the World War II-era lyric, "When the lights go on again all over the world..."

And then the stage illuminates, the announcer begins, and those sitting in the audience are transported back to a time when America was fighting the war that defined a generation.

Co-producers Rodney Brooks and George Jacobs, both military veterans themselves, said their upcoming production, "A Musical Tribute to World War II Veterans," is their way of honoring the men and women who bravely served and sacrificed for the good of the nation.

"I don't think the younger generation appreciate what they did for us," Brooks said.

Set in the fictional WWII radio station, the show follows the chronology of World War II using projected headlines and newsreels, beginning with the Japanese attack on Pearl Harbor in 1941 and continuing through other key moments until the war's end in 1945.

The show also uses live and recorded performances of military and hit parade songs to capture the popular sentiment of the era. At the end of the production, a military medley begins, and veterans from all wars that are in the audience will be asked to stand when their military branch's service song is played.

Jacobs, who served as a B-17

► to page 4



World War II veteran George Jacobs poses in front of his B-17 plane in 1945. Jacobs is co-producing an upcoming tribute to WWII veterans. Courtesy photo

INSIDE	Governance & Information 6	Club Trips Listing 38
	Holiday Schedule 6	Sports, Games & Scoreboards 40
	Thoughts & Opinions 8	Classes & Seminars 44
	Events & Entertainment 12	Calendar of Events 47
	Movie Schedule 15	Governance Meeting Schedules 47
	Health & Fitness 18	Classifieds 50
	Clubs, Groups & Organizations 20	



See page 10 for photos from Feb 13th's Mardi Gras/ Valentine's Day Celebration.

Ready for Their Close-Ups

Residents Appear on Popular Media Programs



Charlie Brotman and Samantha Bee interact in a skit on Bee's comedy show. Screenshot via YouTube

by Stacy Smith, Leisure World News

Two residents recently found themselves in front of the camera, and not just the kind found on a smartphone.

Charlie Brotman, former announcer to the president at every inaugural parade from Eisenhower to Obama, made a humorous appearance on TBS's comedy show, "Full Frontal with Samantha Bee" Jan. 31.

Brotman became a national news fixture last January when the administration of newly elected President Donald Trump ousted him from his long-held position.

In the sketch, Bee satirizes the untimely firings of those such as Brotman in a skit in

which she runs a rescue farm for displaced government workers.

Brotman narrates parts of Bee's interview with Elizabeth Shackelford, a former diplomat for the U.S. State Department. But Brotman quickly "goes off script," forcing Bee to take away his microphone.

The entire sketch is available on YouTube at (https://www.youtube.com/watch?v=II-ejv_SlvY), and Brotman appears beginning at 45 seconds into the clip.

"God bless Charlie; he's hilarious in this sketch,"

"Charlie is so freaking cute!! I love him!"
- YouTube user Olivia Sullivan



Lydia O'Neill discusses her life at Leisure World for a Voice of America report. Screenshot via YouTube

wrote Youtube user Nathan Xaxson in the comments section.

"Charlie is so freaking cute!! I love him!," wrote YouTube user Olivia Sullivan.

International Exposure

In a more serious turn at TV, resident Lydia O'Neill recently appeared in a segment filmed by international broadcasting company Voice of America for Ukrainian television.

As O'Neill is interviewed about her daily life and Ukrainian heritage, a drone captures a bird's-eye view of

Leisure World's sprawling landscape and architecture.

O'Neill is seen line dancing and visiting a friend, and other residents are filmed as they take art classes, play table tennis, work out at the fitness center and dine at the Terrace Room.

O'Neill, who came to America as a teenager but still visits her homeland, said she believes Ukrainians and other Eastern Europeans would be impressed by the amenities and activities Leisure World offers its residents.

The interview is in Ukrainian, but available for viewing on Leisure World's Facebook page at (www.facebook.com/LeisureWorldofMaryland/).

**ASPEN HILL
EXXON**
301-871-6777



Auto Care

**www.aspenhillexxon.com
14011 Georgia Ave.**

Owned and Operated by BENNY Since 1980 "or ask for my son DAN."
Friendly, personal and professional service!

Free transportation home and back when you leave your car for service!

• Complete Automotive Maintenance Service & Repair • Most Makes & Models
• Two Years/24 Month Warranty • Factory Scheduled Maintenance

Auto Service Discounts

Oil Change Service Special - \$29.95

5 Qts of synthetic blend 5W/30 oil

Oil Filter & Lube ♦ Multi-Point Inspection

Most cars, plus tax & disposal fee

Full Synthetic Extra

Present this Coupon with Incoming Order. Expires February 28, 2018

Maryland State Inspection Station

Leisure World News OF MARYLAND

An official publication of the Leisure World Community Corporation, Leisure World News is published twice monthly by Leisure World Staff in collaboration with the Communications Advisory Committee.

Leisure World News is published for the benefit of Leisure World residents. Its mission is to provide news and information about community governance and other relevant issues, events, and activities, and to provide residents a forum for their opinions and an opportunity to contribute articles of general interest. All matters concerning the Leisure World News will be decided with this mission in mind.

Leisure World Staff

Maureen Freeman,

Director of Communications

Stacy Smith, Senior Editor

Kathleen Brooks, Publication Associate

Cassandra Chisholm, Graphic Designer

Editorial: lwnews@lwmc.com

Advertising: lwnewsads@lwmc.com

301-598-1310

Communications Advisory Committee

Arthur N. Popper, Chair

Bernie Ascher, Vice Chair

acwn@lwmc.com

Resident Contributors

Barbara Braswell, Rincy Pollack

and Alan Goldstein

Leisure World News of Maryland reserves the right to reject or discontinue any advertisement believed to be not in the best interest of Leisure World. We will not knowingly permit a dishonest advertisement to appear nor do we guarantee the reliability of advertisers.

Social Services

◀ from page 1

meeting with committees, organizations, clubs and mutuals at Leisure World, and giving talks about their available services and resources.

Although all four social workers are licensed to do therapeutic counseling, the department does not provide it, but rather, does a “first assessment to help determine what the needs are, and then makes the appropriate referrals,” Montgomery said.

The social workers see residents by appointment and walk-in, accept many referrals from MedStar Health and other agencies, and even consult with neighbors, family members, employees and other professionals who are concerned about a resident’s well being.

They are not hamstrung by insurance or medical company policies, so are free to follow up with residents as many times as needed, providing comprehensive plans that address their medical, financial and psychosocial needs.

“It’s a phenomenal way of helping people, of connecting to people,” Braun said. “It’s easy to give a person a list of resources; it only takes two hands. It’s helping them find what’s comfortable for them.”

The department has especially thrived ever since this past summer when then-consultant Dave Merritt helped the team choose and implement NueMD, a software program that has computerized the multitude of resident files that used to be kept on handwritten, five-by-eight-inch index cards.

“We kept [the index cards] in little black boxes, alphabetized. If I got a call in, and I wanted to know, ‘Is this patient known to us, or who’s working with this resident?’ I’d have to run from office to office,” Montgomery said.

Now instead of carrying those little black boxes, the ladies take their laptops with them, providing quick, mobile access to all their files.

Although still “working out the kinks,” Montgomery said, the four women agree that the new program has made their

workflow more ever effective and organized than before.

The technology upgrade comes roughly one year after the department was hit with an unexpected blow – the death of their long-time director, Myrna Cooperstein. The loss of a beloved co-worker was difficult for the department and the community.

“She had been here for so long and she was so good at what she did – so graceful and so respectful,” Montgomery said. “Nobody had planned for this, and she was gone. And so, we were just in shock. We didn’t really know how we were going to go on.”

But the short-staffed team pulled together. They pitched in extra hours; they learned each other’s jobs; and they helped the devastated clients that Cooperstein had left behind.

“We thought, ‘Oh my gosh, can we really take this on?’ But it was almost like, ‘How can we not take this on?’” Montgomery said.

Before she passed, the part-time Cooperstein had hired Montgomery with the forethought that one day she might be her successor.

“Myrna knew that [Montgomery] could step in and take over if she had to. And Susan stepped up to the plate,” Braun said.

Since that time, the department has created resident resource and transportation guides, and had a major hand in choosing the five new healthcare providers that arrived at the medical center this past January.

“I’m very proud of how we got through this year and actually made so much progress in doing outreach and seeing more people, and making our systems more efficient,” Braun said.

The Social Services Department is in the MedStar Health medical center, located at 3305 North Leisure World Blvd., and is open Monday through Friday, from 8:30 a.m.-5:00 p.m.

For more information or to schedule an appointment, call either Susan Montgomery at (301-598-1581), Wilma Braun or Sandy Hart at (301-598-1559), or Ann Johnson at (301-598-1007).

MedStar Seeks Volunteer Greeter

by Leisure World News

MedStar Health medical center at Leisure World is seeking a resident volunteer to greet guests as they enter the facility on Wednesdays and Thursdays from 10 a.m.-2 p.m.

The volunteer will be responsible for assisting guests with inquiries, directions and initial questions regarding the facility in a friendly, efficient and courteous manner. Other duties include:

- escorting guests throughout the facility
- engaging guests with personable conversation
- maintaining the cleanliness, comfort and overall appearance of the waiting area
- maintaining current knowledge of facility procedures and guest-related information

- maintaining current knowledge of emergency procedures, situations and safety procedures
- responding to safety hazards according to protocol
- performing other related duties as assigned

He or she is regularly required to stand and walk, must be up-to-date on tuberculosis tests and other required immunizations, and have customer service experience. The volunteer must also sign a HIPAA and confidentiality form.

The medical center is located at 3305 North Leisure World Blvd. adjacent to the Physical Properties Department.

Interested residents are asked to email their resume to Kamran Hassan, manager of operations, at (Kamran.s.hassan@medstar.net).

■ Energy Advisory Committee

Feb. 17-19: Shop Maryland Energy Weekend

by Norman Eisenberg and Joe Halpin

During Shop Maryland Energy weekend, Saturday, Feb. 17, through midnight on Monday, Feb. 19, qualifying Energy Star products are exempt from Maryland’s six percent sales tax.

The following Energy Star products will be tax-free:

- air conditioners
- washers and dryers
- furnaces
- heat pumps
- boilers
- solar water heaters (tax-exempt at all times)
- standard size refrigerators
- dehumidifiers
- programmable thermostats
- compact fluorescent light bulbs

In addition to saving money, using Energy Star products conserves energy, reduces costs

during periods of high-energy use and reduces emissions, including greenhouse gases.

For more information, visit (<http://comptroller.maryland-taxes.gov/>) and click on Public Services, and then on Comptroller’s Initiatives.

Your service is not forgotten



A MUSICAL TRIBUTE TO WWII VETERANS
MARCH 2 7:30 pm
CH2 auditorium
Tickets \$10 at E&R offices
no charge for veterans
all proceeds go to USO and Fisher House
sponsored by JWV of LW

WWII

◀ from page 1

plane navigator with the Eighth Air Force during World War II, said he still remembers the U.S. Air Force song.

“Off we go into the wild blue yonder,” he belted, and suddenly 73 years of time and circumstance seemed to vanish in an instant.

Brooks was 13 when World War II ended, but remembers its impact on the home front.

Like other Cub Scouts at the time, he was tasked as an assistant air raid warden.

But he also witnessed the patriotic efforts made by older folks like Jacobs, and has felt particularly innervated this past year to make the production, which was originally developed by former resident Maynard London, a reality.

2020 will mark the 75th anniversary of the end of the war, and both Brooks and Jacobs said they realize that

time is running out to significantly honor these men and women.

“For those of us that are veterans, that’s probably going to be a very important number, because we won’t make it to the 100th,” Jacobs said.

Brooks, a veteran director who has worked on several Fun and Fancy Theatre Group productions, also felt inspired after reading Tom Brokaw’s book, “The Greatest Generation,” in which the journalist

coined the now ubiquitous descriptor for those who came of age during wartime.

“[The book] helped strengthen my feelings of gratitude and the desire to show an appreciation,” he said.

A one-time showing of “A Musical Tribute to World War II Veterans” is on Friday, March 2, at 7:30 p.m. in the Clubhouse II auditorium. For ticket information, see the events and entertainment section of this publication.

■ Center for Lifelong Learning (CLL)

March 16: ‘Hearing and Genetics’

by Fred Shapiro

At the Jan. 29 program about DNA and genetics, residents learned about inheritable traits, many leading to disabilities in later generations.

With loss of hearing a major concern in the senior community, the Center for Lifelong Learning (CLL) presents a program by scientist Helen Maunsell entitled, “Hearing and Genetics.”

The program is scheduled for Friday, March 16, at 2 p.m. in Clubhouse I.

Although the program is free, residents are asked to register by either dropping by the Clubhouse I E&R office or calling (301-598-1300).

Maunsell is a post-baccalaureate fellow at the National Institute on Deafness and Other Communications Disorders, where she works in a lab studying genes that contribute to hearing development.

Her passion stems from the potential to use what we understand about normal hearing development to innovate therapies for diseases.

Living in Canada sharpened Maunsell’s interest in health disparities, opening her eyes to what she believes being a doctor in the U.S. will mean if women, minorities and underprivileged

people continue to fall through gaps in the privatized healthcare system.

This concern underlies her involvement in community outreach today, promoting public hearing health awareness.

Most inequities in hearing healthcare become apparent later in life, given the natural tendency for hearing loss to worsen with age.

During this program, Maunsell discusses hearing biology, noise-induced hearing loss and hearing protection.

She hopes to give Montgomery County seniors a chance to understand the physical and mental toll of untreated hearing loss, to learn how hearing

research is contributing to technology like hearing aids and cochlear implants, and to discuss affordable treatment alternatives.

Maunsell graduated with honors and a bachelor’s of science degree from McGill University. She majored in biology and was drawn into the field of developmental biology during her senior research thesis at McGill.

She is the daughter of two neuroscientists who love what they do and encouraged her interests in research and medicine.



Helen Maunsell, courtesy photo



Pazit Aviv, courtesy photo

■ Center for Lifelong Learning (CLL)

April 3: Neighbors Helping Neighbors: County Aging in Place Program

by Fred Shapiro

As some people age and lose the benefits of their mobility or communication skills, Montgomery County recognizes the importance of organizing community networks to provide these needy seniors with assistance.

The Center for Lifelong Learning (CLL) presents a program about this effort on Tuesday, April 3, at 2 p.m. in Clubhouse I. The main speaker is Pazit Aviv, Montgomery County village coordinator.

The program is free but tickets are required. They are available in the Clubhouse I E&R office beginning on Tuesday, Feb. 20, at 8:30 a.m.

Aviv will discuss exactly what aging in place means, particularly within the confines of Montgomery County, and what communities are doing to create their own solutions for supporting one another.

Residents will have an opportunity to ask how such

programs can be facilitated in Leisure World.

Aviv has worked as a village coordinator since January 2014. She consults grassroots community nonprofits on startup and development, and facilitates the growth of all active and developing villages in the county.

One of her top priorities is capacity-building for aging in place in diverse communities.

Prior to this position, Aviv worked at Montgomery County’s Housing

Authority, where she developed innovative programs and services for independent, low-income older adults through partnerships and collaborations.

Aviv holds a certificate of nonprofit management from The George Washington University, a master’s degree in social work from Salem State University with a focus on aging and end-of-life care, and two undergraduate degrees in social work and East Asian studies and communication from the Hebrew University of Jerusalem in Israel.

Fitness Center Orientation Tours Extended

Kaye Haynes, the Fitness Center's personal trainer, continues to offer free orientation tours of the Center every Tuesday at 3 p.m. through March. Learn how to use the equipment and facilities. Registration is not required. For more information, call Haynes at (804-627-1582).

— Leisure World News



Personal trainer Kaye Haynes demonstrates how to use a lateral pulldown machine during an orientation tour in the Fitness Center Feb. 13. Photo by Maureen Freeman, Leisure World News

Mutuals and Committees Hear Site Plan Updates

by Leisure World News

Plans are on track for Leisure World management to continue presentations on the Administration Building and Clubhouse I Site Improvements plan to all mutuals in the next few weeks.

All 29 mutuals have scheduled meetings that will include a presentation by general manager Kevin Flannery and project manager Nicole Gerke, who present an overview of the project and discuss the most recent updates to the plan.

The project is the latest in a series of renovations and new construction outlined in the community's Facilities Enhancement Plan of 2013.

As of Feb. 13, Gerke and Flannery had delivered updates at seven mutuals' meetings, with 15 more sched-

uled before the end of the month and several more in March.

Residents can contact their mutual president, mutual assistant, property manager or Melissa Pelaez, the director of mutual services, for the date and time of their mutual's site plan presentation.

Gerke and Flannery also have presented the site plan overview to meetings of advisory committees that have been involved with the project's planning and development. They expect to complete presentations at the Security and Transportation, Community Planning, Education and Recreation, and Restaurant Advisory Committees.

Upon completion of all mutual and committee meetings, management will report to the Leisure World Community Corporation board of directors on the results.

GOOD TO KNOW: 2018 ADVISORY COMMITTEE CHAIRPERSONS

by Leisure World News

Audit	Francis Teti
Budget & Finance	Phil Marks
Communications	Dr. Arthur Popper
Community Planning	Carole Kennon
Education & Recreation	Yolanda Hunt
Emergency Preparedness	Robert Ducharme
Energy	Edward Nicosia
Golf & Greens	Brenda Curtis-Heiken
Government Affairs	Ken Muir
Health	Dr. Sandra McLeskey
Insurance	Gerry Somner
Landscape	Dora Pugliese
Physical Properties	Antonio Marotta
Restaurant	Joni Sommer
Security & Transportation	Herman Cohen
Tennis & Pickleball	Gerry Sommer

CORRECTION

An article in the Feb. 2 edition incorrectly stated that the IRS reviews a tax return before the taxpayer signs the return. A taxpayer must sign his or her tax return before it is submitted to the IRS.

Change in Service

Saturday shuttle bus service will run 9 a.m.-1 p.m. beginning Saturday, March 17, to coincide with the beginning of daylight saving time. Saturdays' spring hours remain effective through Nov. 4, 2018.

Visit (residents.lwmc.com) for full weekly shuttle bus schedules. Photo by Leisure World News



Low interest rates getting you down? Let's talk.

William P Mason IV, AAMS®
Financial Advisor
17904 Georgia Ave Ste 107
Olney, MD 20832
301-774-8500
www.edwardjones.com

Edward Jones®
MAKING SENSE OF INVESTING

Member SIPC

JOEL'S EXECUTIVE CAR SERVICE

301-438-9777
301-980-4734 (cell)

- Airport
- Trains
- Doctor Visits



Get the Royal Treatment
Available 24 hours.

GOVERNANCE & Information

HOLIDAY SCHEDULE

Monday, Feb. 19, President's Day

LOCATION	HOURS
----------	-------

Administration	Closed
----------------------	--------

CLUBHOUSE I

Education & Recreation	Noon-6:00 p.m.
Eyre Travel.....	Closed
Rossmoor Library.....	Closed
Clubhouse Grille	Closed
Stein Room	9 a.m.-8 p.m.
Terrace Room	9 a.m.-8 p.m.

CLUBHOUSE II

Education & Recreation	8 a.m.-9 p.m.
FISH Desk.....	Closed
Fitness Center.....	4:00 a.m.-9 p.m.
Swimming Pool (Indoor).....	Noon-8 p.m.

OTHER SERVICES

Golf Course & Pro Shop.....	8 a.m.-4 p.m.
MedStar Health	Open
MedStar Pharmacy	Open
Physical Properties Department (PPD)	Closed
Post Office	Closed
Security Gates	Open
Signal Financial Credit Union.....	Closed

Shuttle Buses: No shuttle service. Call Main Gate for supplemental transportation.

Trash Collection: No trash or recycling collection. Trash collection will be on the next regular day for your location.

Special Strategic Planning Committee

Feb. 20 and 21: Strategic Planning Forums

by Leisure World News

All residents are invited to contribute their thoughts and suggestions at two forums that will be held to discuss strategic planning for the Leisure World community.

The Special Strategic Planning Committee (SSPC) presents the forums on Tuesday, Feb. 20, at 2 p.m. and Wednesday, Feb. 21, at 7:30 p.m. Both forums are in the Clubhouse II auditorium.

The SSPC will deliver a presentation about the strategic planning process, its goals and the resources needed to achieve them. The SSPC's goal is to preserve and enhance Leisure World's appeal for current and prospective residents in future years.

Leisure World News

Dial 301-598-1313

for recorded Daily Events

2018 Broadcast Schedule - Channel 974

Executive Committee meetings are broadcast on Wednesday, Thursday and Friday the week after the meeting. Board of Directors meetings are broadcast on Monday, Wednesday and Friday the week after the meeting. All broadcasts are at 4 p.m. and 7 p.m.

Executive Committee Meeting The Feb. 16 meeting airs on Feb. 21, 22 and 23.	Board of Directors Meeting The Feb. 27 meeting airs on March 5, 7 and 9.
--	---

Group Email Addresses

Residents wishing to contact Leisure World Management, the LWCC Board of Directors, or the Executive Committee may send an email to the appropriate email address listed below. It will automatically be forwarded to all members of that group who have an email address on record.

Messages to any of the email groups should pertain only to the management and operation of Leisure World trust properties, services, or activities. Please do not send emails to all three addresses, as there will be a duplication of recipients and will not result in a faster response to your question or comment. Messages pertaining to mutuals or anything else which Management, the Board of Directors, or Executive Committee does not control should also not be sent to these groups.

The group email addresses are:

- LWMC Management - management@lwmc.com
- LWCC Board of Directors - board@lwmc.com
- LWCC Executive Committee - exccomm@lwmc.com

Feb. 22: MVA Mobile Office Returns

Need to do business with Maryland's Motor Vehicle Administration? The MVA on Wheels returns to Leisure World on Thursday, Feb. 22.

The van will be located in the Clubhouse II parking lot, where the hours of operation are 10 a.m.-2 p.m.

Services offered include renewal of non-commercial driver's licenses, Maryland photo identification cards

and vehicle registration. You also can obtain a duplicate driver's license, a certified copy of a driving record, disability placards, substitute stickers, return tags and duplicate registrations, as well as apply for a change of address.

If you need to register to vote and/or want to register as an organ donor, you can do that at the mobile office, too.

Robo Call Reminder



Management will use robo calls, along with the closed-circuit information channels 972 and 974, to inform residents of any delays or cancellation of services due to weather conditions.

Robo calls will be made only in emergency-type situations.

Leisure World Snow Plan 2018

Blueprint for a Safe and Healthy Winter

When Montgomery County authorities announce a snow emergency, snow emergency restrictions become effective in Leisure World as well.

Leisure World is private property encompassing 55 miles of roads and walkways. The county and state do not provide assistance during a snow emergency.

When Snow Begins to Fall

The first priority is to provide continued access for rescue vehicles and automobiles required by residents who might need emergency medical care. The MedStar Health medical center will be given top priority at all times.

Snowplows will clear primary access roadways, parking lots and driveways in the following order:

1. Through Streets:

Rossmoor Boulevard, South and North Leisure World Boulevards, Interlachen Drive, Norbeck Boulevard, Gleneagles Drive, Chiswick Court, Connecticut Avenue, Kelmscot Drive, Hyde Park Drive, Twin Branches Drive, Fitzhugh Lane, Tarkington Lane, Prince Frederick Way, Pine Orchard Drive and Pennfield Circle.

2. Primary Access

Roads: Fiske Drive and Terrace, Edlmar Drive and Terrace, Ludham Drive, Forest Edge and Glade Drives, Vantage Hill Road, Bramblewood Drive, Bassett Lane and Glen Eagles Drive.

3. Remaining named "Courts," "Squares," "Terraces" and "Ways" that serve a dozen or more units.

4. Driveways providing access to less than a dozen dwelling units.

When the Snow Stops Falling

Shoveling crews will start clearing entrances and sidewalks at the Club-

houses and Administration Building, if the facilities are open, followed by the primary access paths for apartment-style buildings and individual units (primary access means from main entrance to parking lot). In apartment-style buildings, if you do not use the front door as primary access because of a disability, call the **Grounds Maintenance Department (301-598-1314)** to arrange special clearing.

Machine clearing of perimeter walks and other long stretches of walks will be done concurrently. Because machine clearing is much faster, these long walks may be completed before hand-shoveling crews have reached other primary access walks.

The snow plan calls for access to a primary roadway, including sidewalks:

- *within 24 hours after the precipitation has ended for snowfalls of 12" or less,*

- *within 36 hours after the precipitation has ended for snowfalls of 12-24"*

- *within 48 hours after the precipitation has ended for snowfalls of more than 24"*

Parking Restrictions

During the snow emergency, do not park on any street designated as a Snow Emergency Route. These include Rossmoor Boulevard, Leisure World Boulevard, Gleneagles Drive, Chiswick Court, Interlachen Drive, Norbeck Boulevard and Connecticut Avenue.

Do not park in Reserved or Visitors parking spaces in your parking lot. Your Mutual may have designated these spaces as areas for snow handling. Residents affected will be contacted by their Mutual to move their vehicles to assigned temporary parking spaces prior to snow removal.

The director of Security and Transportation or a special police officer (SPO)

can assist in identifying a resident whose automobile may be obstructing snow removal operations.

Clearing Snowbound Vehicles

McFall & Berry Inc.'s contracted services do not include shoveling out parked vehicles.

If necessary, call a relative, friend or neighbor to request help. Another option is to use the services of individuals who will do the work for a fee.

Security requires anyone wanting to shovel out residents' cars for a fee to register with the Grounds Maintenance Department at (301-598-1314). The department maintains a list of individuals who have been pre-approved. If you know of anyone interested in providing this service, have that person call the Grounds Maintenance Department as soon as possible. The department will provide identification cards. Security requests that you report any individuals who do not have proper ID.

The Grounds Maintenance Department does not set shoveling fees, nor is it responsible for any damages that may be incurred. See page 6 for a list of snow shovelers.

When you Need Medical Attention

- **Call 911 for all medical emergencies.**

- Notify the **Grounds Maintenance Department (301-598-1314)** at least three hours in advance of a medical appointment you are unable to reschedule. Make sure your medical facility will be open; do not make any assumptions that it will be.

- Call the Grounds Maintenance Department to have your name placed on a snow clearance priority list if you have an ongoing critical medical requirement such as dialysis, oxygen, chemotherapy, radiation, etc.

Updates

- Call the Daily Events Line at (301-598-1313) for up-to-date snow-related information, including trash pick-up, bus scheduling, cancellation of Clubhouse I and II events, activities and facility closings.

- Check the Leisure World closed circuit TV channel 972 for snow-removal updates.

- Check the residents website (residents.lwmc.com) homepage for snow removal updates.

Communication

- Call the **Main Gate (301-598-1044)** to report stuck vehicles or accidents.

- Call the **Grounds Maintenance Department (301-598-1314)** with your snow clearance inquiries. Due to the high volume of calls and the department's need to be out overseeing snow-removal operations, calls will be monitored and prioritized on a regular basis around the clock. Calls will be returned as quickly as possible according to urgency.

- Do not call the McFall & Berry office for routine information, complaints or scheduling issues.

Additional Advice

- In preparation for a potential snow emergency, now is a good time to stock up on essentials such as food and medicines, and other items such as batteries and reading materials. Be prepared to keep at least one week's supply of essentials on hand during the winter months.

- During a snow emergency, if you are in doubt about venturing from your residence, it is best not to go out. Also, wait until conditions are safe before putting out trash or retrieving newspapers.

This information is provided by the Grounds Maintenance Department and can also be found at (residents.lwmc.com) in Resident Information on the homepage. Click on Physical Properties Department and scroll down to Snow Removal Schedule.

THOUGHTS & OPINIONS: *From Our Residents*

A Few Things to Remember

- Relevance:** Make sure that your submission is relevant to the LW community as a whole and not to just one person, mutual, or organization.
- Respect:** Remember that your opinion is about ideas, not individuals, and please avoid personal attacks.
- Brevity:** Being concise will ensure that your opinion will have maximum impact.
- Accuracy:** Document all factual assertions. Opinions that are backed up with facts are more powerful, but only if the facts are accurate.
- Ownership:** All submissions are subject to editing but you will have the opportunity to approve the edits before publication.

Opinions are strictly those of the writers

Illogical Planning Process for Administration Building

At the Nov. 30, 2017 hearing, members of the Maryland-National Capital Park and Planning Commission stated that Leisure World's board of directors should include residents in their planning before proceeding to a final submission to the commission for the Administration Building and Clubhouse I Site Improvements project. It's quite obvious to me that a significant portion of the residents of Leisure World feel left out of the decision making process in our community. For example, the number of residents who signed a petition calling for a referendum on the project is currently 2,000 and counting. Resident groups have held two "town hall" meetings attended by 325 (some of

whom were standing) and 275, respectively.

I sense a feeling of angst in our community, a realization that important decisions are being made by a small group of "power elite," who seem to think they know what's best for us. I believe their attempts at "citizen participation" have been feeble and inconsequential, to say the least. That is why the town hall format is so important. You have probably heard of the New England Town Hall Meetings. They were conceived with one idea in mind – to find out the wants and needs of the community by having all of its members participate in open discussions about issues of importance to them. Such meetings became the birthplace of community planning in America.

In earning a master's degree in community planning, I was taught that effective citizen participation was critical in the efforts to produce a master plan

that would truly represent the needs and desires of the community. Steps in producing such a plan included survey and analysis of the community's physical geography and environmental conditions, land use, demographics, transportation and public facilities. Goals and objectives were determined that related to the implementation of the plan. A capital improvements program was formulated to get to the "brick-and-mortar" stage of the community planning process. In other words, "we have envisioned what we want – now let's build it." Notice the logical, sequential process of formulating the plan first, then deciding, through the capital improvements program, how to get to our goals and objectives on the ground.

What we are currently witnessing in Leisure World is totally opposite of a logical, sequential process – it's the proverbial "putting the cart before the horse." The "power elite" seems intent on proceeding to build a new Administration Building. The second, and presumably final, public hearing to allow the site plan to advance is scheduled for March. We learned from a Jan. 5, 2018 article in the Leisure World News that the Special Strategic Planning Committee wants to hire a consultant to develop a community plan for Leisure World. And, in a letter in the Jan. 19, 2018 edition of the Leisure World News, the Committee touts the importance of securing community participation in the process.

So, let me get this straight – we're going to formulate

a community plan that will reflect what the community wants, while at the same time, we will be proceeding to spend millions of dollars on a project that should be part of our capital improvements program after the plan has been completed? This makes no sense to me. The Administration Building and Clubhouse I Site Improvements project should be put on hold until after the strategic plan has been developed. If the whole thing had been put to a vote in the first place, as requested in the petition, we might not be sitting here today battling for the right to be heard.

– Tom Conger

Drinking Water in the New Fitness Center

I want to take this opportunity to thank all of the folks who were involved in creating the new fitness center in Clubhouse II. However, there is one issue related to the center that still needs attention. I'm referring to the lone drinking fountain that supplies water to many center users.

This fountain includes two water options. The top option is for users who wish to fill empty water bottles or other containers that hold water, while the bottom option is a regular drinking fountain that emits only a modest amount of water.

I've noticed that most center users gravitate to the bottom option that is a regular drinking fountain. With users putting their mouth in and about the

Submitting an Item to Thoughts & Opinions

1. Submissions must be emailed to aclwn@lwmc.com or delivered to the LW News Office.
2. Receipt of submissions will be confirmed by email or telephone.
3. Submissions must state the writer's name, address, telephone number, and email address, if any, but if the material is published, it will include only the writer's name.
4. LW News cannot guarantee when or if a submission will be published.
5. See LW News Guidelines and Board Standing Rules at www.residents.lwmc.com.

fountain to capture as much water as possible to satisfy their drinking needs, I'm afraid that the water fountain has become one of the most unsanitary fixtures in the new fitness center. With a vicious flu season upon us, center users and center management should be very concerned about all situations that impact their health and well-being.

For those center users who want to feel safe and have a more sanitary water option, I am recommending that Leisure World management immediately install a bottled water machine in the fitness center. Usually these machines offer water at \$1 per bottle, which I believe is a small price to pay to keep from getting sick from the flu or other illnesses that may be found on drinking fountains.

Once the bottled water machine is in place, center users would be able to decide which of the water options best suits their needs and feel comfortable with their choice.

– Herbert Morris

Come In From The Cold



Paulette Tievy

LW Specialist
Senior Real Estate Specialist

Direct 301-651-3082

Office 301-681-0550
paulettetievy@gmail.com
www.myhomesdb.com/paulette



It's not hard to fall in love with this fabulous community featuring a variety of homes and amenities to fit everyone's needs.

I have properties for every budget starting with garden apartments for under \$100,000 to a single family home for over \$600,000. There are many choices in between including 1, 2, and 3 bedroom high rise and mid-rise condos, and patio homes with garages.
Let me show you all LW has to offer.

**If you have a real estate question,
I have the answer. Call me today!**

Listing & Selling In LW Since 1989

signalfinancialfcu.org



#SignalStrength

Signal's certificate rates are

SKY HIGH

Climb up to a **higher rate certificate** and start saving.

Signal's certificate rates are among the highest available in the DC metro area and in the nation.

TERM	APY ¹
1 year	1.48%
2 year	1.80%
3 year	1.68%
4 year	2.02%
5 year	2.40%

0.15%
REGULAR SAVINGS
ACCOUNT APY²

2.40%
5-YEAR
CERTIFICATE APY¹



For more information, call 301-933-9100, ext. 105
Visit our branch in the admin building to open an account!

¹ APY—Annual Percentage Yield. Dividend rates are: 1-year certificate, 1.40%; 2-year certificate, 1.78%; 3-year certificate, 1.66%; 4-year certificate, 2.00%; 5-year certificate, 2.37%. A \$500 minimum opening deposit is required. A penalty will be imposed for early withdrawal. IRA Certificates are not eligible. Available to Signal Financial Federal Credit Union members. See the Membership page on our website, signalfinancialfcu.org, to find out how to join. Rates and terms are subject to and may change at any time without notice. For more information about terms and penalties for share certificates, visit the Share Certificates page on our website: www.signalfinancialfcu.org/banking/investment-solutions/share-certificates.
² A standard share savings account at Signal Financial FCU pays 0.75% APY and requires a \$50 minimum balance to earn the dividend.
Federally insured by NCUA

signal financial
Federal Credit Union

FAT TUESDAY FUN

Leisure World let the good times roll, or laissez les bons temps rouler, as they say in New Orleans' French Quarter, on Feb. 13 in the Clubhouse I Crystal Ballroom, as the Dixieland Express played their hearts out to the delight of residents and their guests.

Groups boogied on the dance floor to N'awlins-style jazz tunes, and couples whisked their partners around the floor when more romantic melodies played in honor of Valentine's Day. Photos by Stacy Smith, Leisure World News



Mardi Gras



THIS SPRING ...

Start a New Journey

Whether it's strolling winding paths or socializing in sunny courtyards, residents of Assisted Living at Brooke Grove experience a warm, vibrant lifestyle and delight in our charming setting of open meadows and airy trees.

OUR AMENITIES

- ❁ Private rooms filled with sunshine from over-sized windows and skylights
- ❁ 24-hour on-site clinical support from licensed and caring nurses
- ❁ Secure courtyards and walking paths
- ❁ Ornamental koi pond
- ❁ Manicured flower and sensory gardens
- ❁ Playground for visiting kids

MEMORY SUPPORT PROGRAM

For residents with Alzheimer's or dementia, we offer a special assisted living option with:

- ❁ Specially trained memory support staff
- ❁ An interactive lifestyle that maximizes choice and independence
- ❁ Tailored LIFE® enrichment programming that connects each resident to his or her past
- ❁ Group activities that allow residents to enjoy the outdoors and a thriving social life



BROOKE GROVE
RETIREMENT VILLAGE

18100 Slade School Road
Sandy Spring, MD 20860
301-260-2320 or 301-924-2811

www.bgf.org



EVENTS & Entertainment

Education and Recreation Department

Feb. 24: Classical Masterpieces Performed by Begelman and Lopez

Clarinetist Igor Begelman and pianist George Lopez present a program featuring classical masterpieces on Saturday, Feb. 24, at 4:30 p.m. in the Clubhouse II auditorium. This program is co-sponsored by The Piatigorsky Foundation and the E&R Department.

Clarinetist Igor Begelman is a winner of the Avery Fisher Career Grant, an award given to outstanding American artists. He has participated in numerous recitals and solo performances with major orchestras in the U.S. and around the world.

Begelman is also an accomplished chamber musician. A proponent of new music, he has premiered new compositions by noted contemporary composers.

He served as professor of clarinet at the North Carolina

School of the Arts and now teaches at Brooklyn and Sarah Lawrence Colleges.

Pianist George Lopez, the Robert Beckwith Artist in Residence at Bowdoin College, has been a dedicated and dynamic performer, educator and lecturer for over 25 years.

Lopez has performed in Europe, South America and the U.S. and is equally comfortable performing classical, jazz, ragtime and more contemporary styles of improvisation.

His "Music in the Museum" series at Bowdoin College has consistently sold out to audiences who enjoy his creative and engaging lecture recitals on the relationship of music to art and ideas. Lopez also conducts the Bowdoin Chamber Orchestra made up of students from the college and local high schools.



Clarinetist Igor Begelman, courtesy photo



Pianist George Lopez, courtesy photo

The Piatigorsky Foundation was established in 1990 in honor of cellist Gregor Piatigorsky, who deeply believed in the healing and inspirational power of classical music. The Piatigorsky Foundation is committed to carrying

on his mission by evoking cultural curiosity through educational and accessible live performances.

Tickets, \$6 per person, are available for purchase in both clubhouse E&R offices. Please bring your Leisure World ID.

Ballroom Dance Club

Feb. 24: Dance to the Music of The Helmut Licht Trio

by Joyce Hendrix

The musical group Club members have been waiting for since their last appearance at Leisure World in October 2017 returns again on Saturday, Feb. 24. The Helmut Licht Trio, led by the multi-talented Licht, play in strict ballroom tempo.

Doors open at 7 p.m., with music from 7:30-10:30 p.m. in the Clubhouse I Crystal Ballroom.

Admission for members is \$10 per person at each dance. All non-members and guests pay \$15 per person, per dance. The dress code is dressy for the ladies and jackets and ties for the gentlemen.



The Club strongly suggests making reservations at least one week prior to the dance with Connie Roby at (240-393-9808) to ensure adequate seating. Include the names of everyone in your group with the reservation. Each table seats 10.

All reservations should be received by the Thursday, Feb. 22. The Club cannot guarantee a specific seating arrangement for late reservations. Invite friends and neighbors, and feel free to bring snacks. A cash bar is available.

For more information about Ballroom Dance Club's dances, see the Clubs and Organizations section of this publication.

Jewish War Veterans Charles B. Krieger Post 567

March 2: 'A Musical Tribute to WWII Veterans'

by Leisure World News

On Friday, March 2, co-producers Rodney Brooks and George Jacobs present an original show, "A Musical Tribute to WWII Veterans," at 7:30 p.m. in the Clubhouse II auditorium.

Set in the fictional radio station, "Radio WWII," the show includes projected newsreels and headlines from the era, as well as live and recorded musical performances.

The show culminates

with a sing-along of military service songs. Military veterans from all wars who are in the audience will be recognized.

The cost of the show is \$10 for residents and free for all military veterans. Tickets are required for all attendees and available at both clubhouse E&R offices. Make checks payable to LWMC.

Proceeds will be distributed among veterans' organizations. The Jewish War Veterans Post 567 sponsors the performance.

PLEASE, NO CASH

The E&R offices in Clubhouse I and II do not accept cash payment for programs or activities it sponsors. Payment can be made by check payable to LWMC. Or, if \$10 or more, payment can also be made with a credit card (MasterCard, Visa or Discover).

■ Fireside Forum

March 4: Women in Science and Engineering

by Jonas Weiss

Dr. Karen Rader, a professor who studies the intellectual, cultural and social history of the modern life sciences in the U.S., talks about women in science and engineering at the Sunday, March 4, Fireside Forum program.

Women in these fields are more numerous than ever, but stories of their continued struggles with issues of gender and sexism still abound. Rader gives an overview of various trailblazing figures in these fields and comments on both consistent patterns and new trends in the history of women's experiences in STEM (science, technology, engineering and math).

She also discusses what

philosophers of science once called "the science question in feminism," which remains relevant.



Dr. Karen Rader, courtesy photo



Rader has doctorate and master's degrees in history and philosophy of science from Indiana University, and has held visiting professorships at the University of Oslo and the Institute for Advanced Studies at Lancaster University in the U.K.

She was elected a Fellow of the American Association for the Advancement of Science in Section L (History and Philosophy of Science), and cited for "distinguished contributions to the history of modern life sciences."

The program is at 2:30 p.m. in the Clubhouse II auditorium. Barbara Studwell is the host for the speaker.

■ Lions Club of Leisure World

March 11: Take the Stage Performance Company Returns



Take the Stage Performance Company poses with choreographer and former Radio City Rockette Chryssie Whitehead, center. Courtesy photo

by Larry Cohen

Take the Stage Performance Company brings Broadway to Leisure World for the third consecutive year on Sunday, March 11, at 2 p.m. in Clubhouse II auditorium. Join your fellow theater lovers for the 2018 musical revue, "Dynamic," and enjoy hits from old and new Broadway shows such as "Singin' in the Rain," "Carousel" and "Dear Evan Hansen."

The mix of songs and dances will have you snapping your fingers and singing along with the performers, all of who are local students selected by competitive audition. Dance highlights for the 2018 revue include pieces choreographed by Chryssie Whitehead, a former Radio City Rockette, and Rachel Leigh Dolan, a nominee for a Helen Hayes Award in choreography.

Susan Thompson, the troupe's artistic director, and Tammy Roberts, the revue director, have years of experience with regional and local theater companies. Music directors Bobby McCoy and Paul Rossen and choreographers Donna Reese and Diane Hamilton round out the off-stage talent.

Tickets, \$10 per person, are checks only, payable to Lions Club, and go on sale beginning Tuesday, Feb. 20, at 8:30 a.m. in the Clubhouse I E&R office.

Revenue from the performance will help to fund Lions Club activities such as Camp Merrick, which provides summer vacations to underprivileged children with diabetes and blindness, and the Leader Dog program for people coping with vision loss.

The Club also uses the revenue to help Leisure World's social workers assist needy residents, as well as homeless people in Montgomery County. The Club also provides glasses for many children and adults.



■ Education and Recreation Department

March 8: The Critics Don't Always Get It Right

Steve Friedman returns on Thursday, March 8, at 1:30 p.m. in Clubhouse I for his continuing series of programs on the history of Broadway. Using song and lecture, he explains why the critics don't always get it right when it comes to the success of a Broadway show.

The success or failure of a Broadway musical is often dependent on how the critics react. However, even rave reviews cannot ensure a success, while often unanimous pans of shows, "Cats" for example, do not mean the early death of a musical.

Sometimes, the critics just do not assess the way an audience



Steve Friedman. Photo by Leisure World News

will react. This lecture looks at flops and hits that the critics did not get quite right.

Tickets are \$6 per person and are on sale in both clubhouse E&R offices. Please bring your Leisure World ID.

TAKE THE STRESS OUT OF YOUR MOVE!

CONTINENTAL MOVERS

Professional Trained Movers Who Really Care

Local & Long Distance • Packing Services • Pianos and Big Objects
Owner Operated since 1982 • References • Best Rates in DC
\$80 x two men • Pickups / Deliveries



www.continentalmovers.net • Cmor53607@msn.com

202-438-1489 | 301-340-0602

■ Education and Recreation Department

March 17: Celebrate St. Patrick's Day with Irish Dance

The E&R Department welcomes dancers from the Hurley School of Irish Dance back to Leisure World on Saturday, March 17, for a very special St. Patrick's Day celebration. Students will



The Hurley School of Irish Dance, courtesy photo

perform a variety of Irish dances at 7 p.m. in the Clubhouse II auditorium.

The Hurley School is located in Laytonsville, Maryland, and draws its students from neighboring communities. Along with the experience of learning Irish dance technique, students learn about the culture of traditional Irish dancing.

The school strives to encourage every dancer to work to their potential as well as to enjoy Irish dancing; and offers opportunities to travel and compete. Students also gain significant life skills such as leadership and confidence as they learn to dance and

begin to compete.

Most dancers attend local competitions and many have reached the regional, national and world level of competition.

This March, several Hurley dancers are traveling to the World Irish Dancing Championships in Glasgow, Scotland, to compete for a medal. As well, dancers will perform at venues such as Gaithersburg St. Patrick's Day and the Olney Days parades.

Tickets are \$8 per person and can be purchased at either the Clubhouse I or Clubhouse II E&R office. Please bring your Leisure World ID.

■ Education and Recreation Department

March 24: 'Death at the Palace Theater'



Chris Ryan and Jerry Katz as the Singing Rooneys, courtesy photo

It's 1932 and, backstage at the world-renowned Palace Theater in New York City, a former song and dance team, The Singing Rooneys, reminisce about their almost 40 years in Vaudeville.

Chris Ryan and Jerry Katz portray the married Vaudevillian song and dance team as they perform 29 classic tunes, all published prior to 1933.

Many of these songs are still sung today even though they were introduced nearly a 100 years ago, such as "It Had to be You," "Over There," "You're Getting to be a Habit with Me" and "I Can't Give You Anything but Love."

Also included in the show are performances by a magician, a numerologist act and a Burns and Allen comedy routine, all performed by Ryan and Katz.

Ryan and Katz have been singing and performing together for eight years, and the E&R Department is pleased to bring them back for their performance of "Death at the Palace Theater" on Saturday, March 24, at 7 p.m., in the Clubhouse II auditorium.

Tickets are \$8 per person and go on sale beginning Tuesday, Feb. 20, at 8:30 a.m. in both clubhouse E&R offices. Please bring your Leisure World ID.

Special Sale - Buy 1 Meal and get the 2nd Meal Half OFF!

CHEF ON THE RUN®

301-990-7727

WE DELIVER!

EXPANDED MENU



A HEALTHY ALTERNATIVE WITH OUR NEW MENU ITEMS. Too Tired to Cook? No Time to Cook? Let us prepare delicious meals for you. We deliver fresh food daily, very reasonable rates. No boring food. Only food with a bit of love sprinkled in. Gift certificates are now available. Ask for Dina.

Errand, shopping and companionship services also available!



JOHN J. FERGUSON, ESQ.
FERGUSON & WILPON

ESTATE ADMINISTRATION/PROBATE

WILLS POWERS OF ATTORNEY LIVING TRUSTS

REAL ESTATE MEDICAL DIRECTIVES/LIVING WILLS

CALL JOHN FERGUSON
301-570-3633

3406 Olandwood Court, Ste. 202, Olney, MD 20832
WE CAN MEET IN YOUR HOME OR OUR OLNEY OFFICE

■ **Jewish Residents of Leisure World**

Feb. 22: 'Fanny's Journey'

by Jonas Weiss

Jewish Residents of Leisure World (JRLW) and Coming of Age in Maryland present the movie "Fanny's Journey" (2016, 1 hour 34 minutes, drama, French with English subtitles, not rated) on Thursday, Feb. 22, at 1:30 p.m. in the Clubhouse II auditorium.

Based on a true story, this movie is a tale of bravery, strength and survival. In the middle of the war in 1943, 13-year-old Fanny and her younger sisters are sent from their home in France

to an Italian foster home for Jewish children. When the Nazis arrive in Italy, their caretakers desperately organize the departure of the children to Switzerland.



When suddenly left alone, these 11 children do the impossible and manage to reach the Swiss border to gain their freedom. The film has won awards at many Jewish film festivals.



A discussion follows the film. Tickets, \$7 per person, are available at the Clubhouse I E&R office, checks only, payable to JRLW. All residents are welcome.

Coming in 2018

The E&R Department is pleased to provide the following programs.

- Feb. 24, 4:30 p.m. Clarinetist Igor Begelman and Pianist George Lopez
- March 8, 1:30 p.m. Steve Friedman on Broadway's Critics
- March 17, 7 p.m. Hurley School of Irish Dance – St. Patrick's Day Performance
- March 24, 7 p.m. Ryan and Katz – Death at the Palace Theatre
- April 7, 7 p.m. Artemis International Dance Group
- April 22, 7 p.m. Ovation Dinner Theatre – Murder Take 2
- April 28, 7 p.m. The Rat Pack Together Again

Watch Leisure World News for more information on these and other upcoming programs throughout the year.

2018 Movie Schedule

Sponsored by the E&R Department

Movies are FREE and shown for your enjoyment in the I Auditorium. Please pick up your tickets (limit two per person) on the date indicated below at either I or II. Please bring your Leisure World ID and remember tickets can go fast.

Show Date & Time	Movie	Tickets Available
Feb. 25, 2 p.m.	Hidden Figures	LIMITED
March 15, 1 p.m.	Jackie	Feb. 20
March 25, 2 p.m.	The Shack	March 6
April 19, 1 p.m.	Queen of Katwe	March 19
April 29, 2 p.m.	The Dressmaker	April 9
May 17, 1 p.m.	Paris Can Wait	April 23

Movies are subject to change.

■ **Education and Recreation Department**

Thursday Afternoon at the Movies

March 15: 'Jackie'

The E&R Department is pleased to present "Thursday Afternoon at the Movies." Films are shown at 1 p.m. in the Clubhouse II auditorium. On Thursday, March 15, the presentation is "Jackie" (2016, 1 hour 40 minutes, biography/drama/history, rated R for brief strong violence and some language).



Portman as Jacqueline "Jackie" Kennedy, Peter Sarsgaard as Robert "Bobby" Kennedy, John Carroll Lynch as Lyndon B. Johnson and Beth Grant as Lady Bird Johnson.

Thursday movie screenings are for your enjoyment; there is no charge. Be sure to pick up your ticket(s) in advance if you plan to attend. Please note: No one will be seated after 1 p.m.

Free tickets, limit two per person, are required and can be obtained from the E&R office in either Clubhouse I or II, beginning Tuesday, Feb. 20, at 8:30 a.m. Please bring your Leisure World ID.

Still reeling from her husband's shocking assassination in Dallas, Texas, First Lady Jacqueline Kennedy battles through exhaustion, overwhelming heartache and anger to preserve his legacy – and to define her own.

The film stars Natalie

WE BUY VINTAGE
Speakers, Amps, LPs, Turntables, etc.

We come to you when possible
301.881.1327

Mark C. Wimsatt
Painting
Interior/Exterior

Leisure World References
• Affordable Quality
• Excellent References • Free Estimates

WINTER DISCOUNTS!

301-828-6500

Serving Leisure World for over 30 years.

MHIC 10165 Bonded/Insured

LW TOP OFFICE PRODUCER
LEISURE WORLD PLAZA
MAYNARD E. TUROW
AGENT 19 YEARS...LISTINGS, REALES, NEW SALES

**THINKING OF SELLING??
Or Friends-Relatives Buying??**

Living in and working in this community, I give you the attention to detail your property needs to sell successfully. I know the marketplace and can bring you excellent results.

LONG & FOSTER
REAL ESTATE, INC.

(O) 301-598-7500

FREE BROCHURES, COMPS, LAYOUTS, INFO
Direct: 301-518-3834
maynardturow@yahoo.com
Website: MaynardTurow.LNF.com

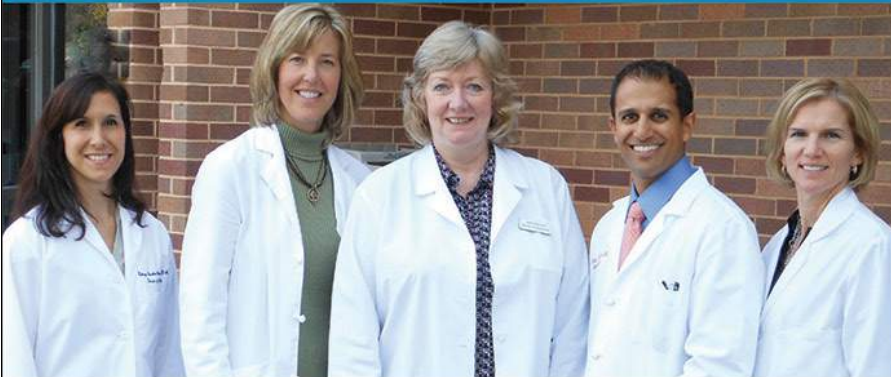
Preserve Your Family Memories!
Photo Scanning by Kim

Personalized service at an affordable price
Volume discounts available!

Call Kim at (301) 438-3140
Virtual Computer Services
www.creative-alternative.com



Hearing is one of the joys of life. **Don't neglect it!**



From left: Kathryn A. Balestino-Estes, AuD., Cynthia Chrosniak, M.D., Jane Cooke, AuD., Nicholas Mehta, M.D., Heather Schwartzbauer, M.D.

We have a team of audiology doctors and otolaryngology physicians who work together in two convenient locations to help you.

MEET OUR AUDIOLOGISTS

Dr. Jane Cooke and Dr. Kathryn Balestino-Estes

- Comprehensive and personalized evaluations
- The latest digital hearing instruments from leading manufacturers
- Solutions to fit your hearing needs, lifestyle, and budget
- Many insurance plans offer hearing aid benefits
- Financing Plans available

We are conveniently located in the Professional Building in the Leisure World Shopping Center above Sandy Spring Bank.

LEISURE WORLD PLAZA
3801 International Drive
Silver Spring, MD 20906,
Suite 206

PROFESSIONAL OFFICE BUILDING
18111 Prince Phillip Drive
Olney, MD 20832, Suite 224

CALL TODAY TO SCHEDULE AN APPOINTMENT!

301-774-0074

WWW.MONTGOMERYCOUNTYENT.COM

\$300 Off

a pair of digital hearing aids

\$400 Off

a pair of digital hearing aids when you upgrade your existing aids



Drs. Chrosniak, Schwartzbauer and Mehta, M.D.

Education and Recreation Department

Sunday Afternoon at the Movies

Feb. 25: 'Hidden Figures'

The E&R Department is pleased to present "Sunday Afternoon at the Movies." The movies are shown at 2 p.m. in the Clubhouse II auditorium.

On Sunday, Feb. 25, the featured film is "Hidden Figures" (2016, 2 hours 17 minutes, biography/drama/history, rated PG for thematic elements and some language).

Free tickets, limit two per person, are required and can be obtained from the E&R office in either Clubhouse I or II. Please bring your Leisure World ID.

In the race to space between the U.S. and the USSR during the Cold War, three African-American, female

mathematicians play a key role in launching astronaut John Glenn into outer space, making him the first American to orbit the Earth.

The three mathematicians are portrayed by Taraji P. Henson as Katherine G. Johnson, Octavia Spencer as Dorothy Vaughan and Janelle Monáe as Mary Jackson. The film also stars Kevin Costner as Al Harrison, Kirsten Dunst as Vivian Mitchell,

Jim Parsons as Paul Stafford and Glen Powel as John Glenn.

Sunday movie screenings are for your enjoyment; there is no charge. Be sure to pick up your ticket(s) in advance if you plan to attend. Please note that no one will be seated after 2 p.m.



Compassion and Choices of Leisure World

March 7: 'Consider the Conversation'

by Rosalind Kipping

Compassion and Choices holds its next meeting on Wednesday, March 7, at 2 p.m. in Clubhouse I. The program includes the video, "Consider the Conversation," followed by a discussion about how to break through barriers when adult children refuse to talk about their parent's end-of-life wishes.

Motivated by their personal experiences with loss, two long-time friends – one a hospice worker and the other a State Teacher of the Year – present a powerful and inspiring film on the American struggle with

communication and preparation at the end-of-life.

"Consider the Conversation" examines multiple perspectives on end-of-life care and includes interviews with patients, family members, doctors, nurses, clergy, social workers and national experts from across the country.

The film's goal is to jump-start the conversation between husband and wife, doctor and patient, minister and parishioner or parent and child. This is not a story about death; it's about living life to its fullest up to the very end.

The showing is free for all residents; tickets are not required.



The Karen Rollings Team



Karen Rollings



Kathy Workman



Sherry Felice

301-924-8200

www.TheKarenRollingsTeam.com

BERKSHIRE HATHAWAY HomeServices PenFed Realty

3410 N High St
Olney, MD 20832
301-260-7700



Recent Solds "Around the World"!

Address	Subdivision	Type	Beds	Baths	Asked	Got	Subsidy
15003 WESTHOLM CT #271-B	LEISURE WORLD	Quad	2	2	\$169,900	\$170,000	\$1,500
3335 LEISURE WORLD BLVD #97-D	MONTGOMERY MUTUAL COOP	Townhouse	2	2.5	\$159,900	\$150,000	\$2,500
3457 CHISWICK CT #72-A	MONTGOMERY MUTUAL COOP	Duplex	2	1.5	\$250,000	\$241,000	\$0
3123 FARNBOROUGH CT #259-B	ROSSMOOR MUTUAL #11	Patio Home	3	2	\$177,500	\$174,000	\$1,500
3619 CHORLEY WOODS WAY #7	ROSSMOOR MUTUAL #13	Patio Home	2	2	\$254,900	\$250,000	\$0
3511 FOREST EDGE DR #17-1G	ROSSMOOR MUTUAL #14	Garden 1-4 Floors	3	2	\$214,900	\$213,000	\$1,500
15111 GLADE DR ##12-3 E	ROSSMOOR MUTUAL #14	Garden 1-4 Floors	2	2	\$139,000	\$133,000	\$0
15201 ELKRIDGE WAY #93-1A	ROSSMOOR MUTUAL #19B	Garden 1-4 Floors	3	2	\$159,900	\$159,900	\$4,000
15301 BEAVERBROOK CT #2C	ROSSMOOR MUTUAL #19B	Garden 1-4 Floors	2	2	\$144,900	\$148,000	\$0
15300 BEAVERBROOK CT #88-1H	ROSSMOOR MUTUAL #19B	Garden 1-4 Floors	2	2	\$155,000	\$150,000	\$0
15201 ELKRIDGE WAY #93-3E	ROSSMOOR MUTUAL #19B	Garden 1-4 Floors	3	2	\$199,000	\$185,000	\$0
3625 GLENEAGLES DR #2-1A	ROSSMOOR MUTUAL #7	Garden 1-4 Floors	1	1	\$89,000	\$85,000	\$0
15100 INTERLACHEN DR #126	THE GREENS	Hi-Rise 9+ Floors	2	2	\$179,000	\$168,000	\$0
15101 INTERLACHEN DR #1-706	THE GREENS	Hi-Rise 9+ Floors	2	2	\$144,900	\$144,900	\$3,000
3005 LEISURE WORLD BLVD #718	TURNBERRY COURTS	Hi-Rise 9+ Floors	2	2	\$213,000	\$200,000	\$0
14809 PENNFIELD CIR #210	VILLA CORTESE	Garden 1-4 Floors	2	2	\$415,000	\$394,000	\$0



ACTIVE!!!

15107 Interlachen Drive, #2-507

2 Bedroom, 2 Full Bath condo with enclosed balcony w/ awesome view of the golf course!!



SOLD!!!

3123 Farnborough Court, #259-B

Our buyers found the perfect new place to call home! Call us TODAY to see how we can help you!



ACTIVE!!!

3459 Chiswick Court, #74-D

Updated appliances in Kitchen. Enjoy relaxing on your private fenced in patio!



MORTGAGE LOAN OFFICER
Office (240) 403-1972
skeenum@monarchmortgage.com
600 Jefferson Plaza Suite 400
Rockville, MD 20852
NMLS # 459670

Scott Keenum
✓ Resident of Leisure World & represented Leisure World at the Maryland Senior Olympics winning a Silver Medal in Pickleball
✓ U.S. Army Veteran
✓ 30 Years of Experience in the Mortgage Industry



Need New Carpet?

Serving Montgomery County for 30 years! We are the company for all your flooring needs. Carpeting, Hardwood, Laminate, Ceramic, Marble, Commercial, Residential. We do it all! We carry major brand names in carpeting and hard surface flooring.

Trust our experience and knowledge of the industry.

301-924-7331

18167 Village Center Drive
Olney, MD 20832
(in the Olney Village Center)

www.carpetandvacuumexpo.com

CARPET & VACUUM
EXPO

\$100
off installation!
301-924-7331

only for purchases over \$1000. Offer not valid with any other offers.

HEALTH & Fitness

Health Advisory Committee

Feb. 26: Smoking Cessation Information Session

by Sandra McLeskey

All residents are invited to a smoking cessation information session on Monday, Feb. 26, at 2 p.m. in Clubhouse I. The session outlines the smoking cessation program that is coming to MedStar Health medical center at Leisure World. Refreshments are included.

Two pulmonologists, Dr. Vineesha Arelli and Dr. Manu Kaushal, describe the program, including information on medications and treatments to facilitate smoking cessation, reasons to quit smoking at any point in life and the effects of smoking on overall health.

Sheila Gorde, respiratory therapist and supervisor of pulmonary services at MedStar Montgomery Medical Center, will be available to conduct peak/flow breath tests on attendees who desire it.

Additionally, Debbie Chakalakis, R.N., COPD educator at the pulmonary clinic, presents information about the American Cancer Society's Freshstart smoking cessation program.

Smokers and friends or relatives of smokers are encouraged to attend this presentation. Even if you have been smoking for many years and have tried to quit many times, new techniques described in the session may enable you to quit.

Compassion and Choices

March 7: Meeting and Video

by Rosalind Kipping

Compassion and Choices holds its next meeting on Wednesday, March 7, at 2 p.m. in Clubhouse I.

The program includes the video, "Consider the Conversation," about end-of-life conversations. See the Events and Entertainment section of this publication for more information.

The Group's resource tables provide information on a wide variety of end-of-life issues. Several new items are available,

as well as the most recent issue of the Compassion and Choices magazine.

Annual dues are \$2, and the fiscal year began Oct. 1. To renew membership or to become a member, bring \$2 to the meeting, and receive a high-quality Compassion and Choices shopping sack.

All Compassion and Choices meetings are open to all residents and their guests. Everyone is always welcome.

Rosalind Kipping is available at (rozkiping@comcast.net) or (301-598-4171).

Health Advisory Committee

March 15: Presentation on Depression in Older Adults

by Sandra McLeskey

The Mental Health Subcommittee of the Health Advisory Committee sponsors a talk on Thursday, March 15, about the causes and treatments of depression in older adults. Amy Fier, LCSW-C, gives the presentation at 10:30 a.m. in Clubhouse I.

According to the National Alliance on Mental Illness, more than 6.5 million of the 35 million Americans aged 65 or older are affected by depression. Some of these people have had depression in their younger years, but others have a new onset depression.

Depression can be related to chronic illness, grief or loss, or a change in living circumstances. But sometimes, it has no apparent reason for onset. Whatever the cause, depression can be effectively treated in most people by medication, psychotherapy or a combination of both.

During the presentation, Fier

dispels myths about depression and talks about causes and treatment of depression in older adults, including grief and loss. She also outlines wellness strategies and self-care practices that alleviate depression.

This promises to be an enlightening presentation for seniors who have battled depression, as well as family members and friends of those with depression. Free tickets are available in the Clubhouse I E&R office.

Fier is a director with Adult and Community Services at EveryMind, a nonprofit organization that promotes mental wellness in the Maryland-D.C. region. She received a master's degree in social work from the University of Maryland School of Social Work in Baltimore.

Since then, she has worked at a number of nonprofit and community organizations to promote mental health. At EveryMind, she manages the Representative Payee and Friendly Visitor programs.

Patients Rights Council of Leisure World

March 14: Social Worker Speaks at Meeting

by Mary Ann Johnston

The Patients Rights Council of Leisure World meets on Wednesday, March 14, at 1:30 p.m. in Clubhouse I. The speaker is Sandra Hart from Leisure World's Social Services Department.

Before coming to Leisure World in 2015, Hart worked at a skilled rehabilitation facility, which focused on geriatric behavioral health, hospice and palliative care.

She was there for 18 years

and was the director of social services for the last five years.

Hart received her bachelor's degree in social work

from the University of Maryland, Baltimore County and her master's degree from the University of Maryland, Baltimore.

All residents are welcome and encouraged to attend the Council's informative programs for seniors, and to pick up the Council's literature.

Members are reminded that the Council's treasurer is accepting \$10 dues for 2018.



Sandra Hart, LCSW-C. Photo by Leisure World News

FISH Lends Assistive Equipment

by Beth Leanza

FISH lends donated, assistive equipment to residents and employees. FISH lends wheelchairs, walkers, commodes and tub stools. Residents who are thinking of purchasing equipment may want to “test drive” it at FISH first.

Most of the donated items are used, and volunteers try to check all of them for safety. FISH also strongly urges borrowers to clean items before using and returning them to the office.

FISH suggests a loan period of one to three months for the assistive equipment, but sometimes items are kept for longer. Residents who wish to keep a borrowed item are asked to contact FISH president Beth Leanza at (301-598-4569).

Let family or other household members know when an item came from FISH so it can be returned when no longer needed.

Lost and Found

The FISH office is also the place where E&R stores found items after they are turned in at one of the clubhouses. A few car keys are among the more valuable items found there, as well as eyeglasses, hats and scarves.

Scooter Shop

The new Scooter Shop at the MedStar Health medical center in Leisure World sells and rents all types of assistive equipment, and stands ready to repair, if necessary, any items purchased from them.

Other Donations/Giveaways

FISH also gives away some of its donations, such as incontinence aids (pads, bed pads, adult diapers), blood pressure equipment, comfort cushions and canes. Giveaways are located in the office closet on the lowest two shelves. Feel free to ask the volunteer to let you have a look.

Helping Other Charities

FISH is also the place where other organizations can set up a collection box. Some organizations just have a short period for the collection, while others have ongoing collections. The Lions Club and the Kiwanis Club are ready to receive glasses, hearing aids and can tabs.

Do you have empty prescription bottles or unused prescription medicines? FISH has an address where you can send them. Bear in mind that the sender incurs all postage charges.

Volunteers

Volunteers staff the office, many of which have regular, repeating sessions scheduled. Substitute volunteers are sometimes needed, and a couple of openings for repeating sessions are available.

Call Beth at (301-598-4569) if interested in volunteering.

General Information

The FISH office is open Monday to Friday, from 10 a.m.-4 p.m., except major holidays. The office phone number is (301-598-1345). E&R staff in Clubhouse II assists residents before and after hours, and on weekends. FISH organizations exist around the world, but they all act independently and make up their own definitions for the acronym.

■ Essential Tremor Group

March 1: Learn About Advances in Essential Tremor Treatment

by Marlene Golden

Hello to all those with essential tremor. The group has missed seeing everyone at its meetings.

The Essential Tremor Group meets on the first Thursday of the month at 10:30 a.m. in Clubhouse I. Some exciting, new developments in research have been discussed at the group's meetings, such as a new tablet that measures the tremors in a person's hands and possibly their voice.

All residents with or affected by essential tremor are encouraged to come to the next meeting on Thursday, March 1, at 10:30 a.m. to find out about more new research and to meet other people with essential tremor. For questions, call Marlene Golden at (301-438-7773).

Health & Fitness In Brief

Al-Anon Meeting: Al-Anon (for family and friends affected by alcoholism) meets Fridays at 2 p.m. at Our Lady of Grace Church Parish Center, near Leisure World. Enter through the back door (15661 Norbeck Blvd., Silver Spring). For more information, call Bridget at (301-598-3043).

Alcoholics Anonymous (AA): Newcomers welcome. (If outside Leisure World, check in at the main gate.) Meetings are Mondays at noon (Step Meeting) and Thursdays at 6 p.m. (Big Book) in Clubhouse I. For questions, contact Laurie at (240-558-4454).

Alzheimer's Caregivers Support: The Alzheimer's Support Group meets the first and third Wednesday of each month at 3 p.m. in The Inter-Faith Chapel library. For more information, call Sunny at (301-438-2446).

Bereavement Support Group: If your spouse or long-term partner died in the recent past, you may be eligible to participate in a twice-monthly bereavement support group that meets on the first and third Tuesday of the month, 2-3:30 p.m., in the conference room at MedStar Health, 3305 N. Leisure World Blvd. Hospice Caring Inc. sponsors group meetings. Registration and a phone conversation with Anne Baker, director of adult bereavement at Hospice Caring Inc., is required before attending. If interested, please call Anne at (301-990-0854).

Free Blood Pressure Testing: Come to Clubhouse I for free

blood pressure testing, available on the first and third Tuesdays of the month from 9-11 a.m.

Memory Café: The Memory Café meets the last Thursday of every month from 2-3:30 p.m. in Clubhouse I. The program provides social engagement for individuals living with early stage memory loss. Registration is required. For more information, contact Diane Vance at (240-428-1342) or (dvance@alz.org).

Parkinson's Support Group: The Leisure World Parkinson's Support Group was created under the auspices of the Parkinson Foundation of the National Capital Area to provide support to patients suffering from Parkinson's disease (PD) and their families and caregivers. The group meets the second Tuesday of the month at 3 p.m. in Clubhouse II. Usually there is a presentation by a speaker with knowledge about PD, physical therapy or some other related subject, followed by a period of Q&A. There are no memberships or fees to pay, and the meetings are open to anyone who may be interested. Questions? Contact Ray Weil at (301-598-3447) or (raywwjr@hotmail.com).

Stroke Support Group: You are not alone! The Leisure World Stroke Support Group invites stroke survivors and caregivers to its monthly meetings (except July and August) on the second Wednesday from 1:30-3:30 p.m. in Clubhouse II. No registration is needed and all are welcome. For more information, contact Sally MacDonald at (240-669-4233) or (sn3macd@aol.com).

CLUBS, GROUPS & Organizations

■ Lions Club of Leisure World

Feb. 19: Join the Club

by Maxine Hooker

Are you looking for an organization that can utilize your gifts and help you be of service to others? If so, then come join the Lions Club at their kick-off daytime meeting on Monday, Feb. 19, from 11 a.m.-noon in Clubhouse I.

The meeting is open to all residents who want to join the Lions Club, or are

interested in learning more about the organization.

Attendees have an opportunity to hear about the specific projects and committees the Lions Club is involved in, and may consider how their gifts and talents can best be used.

Residents who are interested or who have questions are encouraged to contact Carmiller Dorsey, membership chair, at (carmillerw7@aol.com).



■ LW Green

March 8: Tour the Montgomery County Recycling Center

by Marybeth Ardike

On Thursday, March 8, LW Green sponsors a tour of the Montgomery County Recycling Center. The tour begins at 11 a.m., and all residents are invited.

Attendees will meet at 10:20 a.m. in the Clubhouse I lobby. Carpools will form at the Clubhouse I entrance and depart Leisure World at 10:30 a.m.

The Club recognizes the importance of reducing, reusing and recycling as much as possible. In February, the Club sponsored a presentation highlighting some simple actions individuals can take toward that goal.

LW Green meets regularly on the second and fourth Wednesday of each month at 2 p.m. in Clubhouse I. All residents are warmly invited to attend.

■ Town Meeting Organization

March 1: Town Meeting

by S.L.Katzman and Marybeth Ardike

All residents are invited to attend a meeting organized by the newly formed Town Meeting Organization (TMO). The event is held on Thursday, March 1, from 1:30-3:30 p.m. in the Clubhouse I Crystal Ballroom.

The recently elected TMO officers will introduce themselves. The meeting's agenda includes resident speakers who will address the background and history of the Administration Building project.

The meeting will also address the Montgomery County planning board's decision to defer

Leisure World's application for construction of a new administration building, Clubhouse I additions and parking lot changes; and a "consensus" that some planning board members urged regarding the project.

Invitations to speak have been extended to current members of the Leisure World Community Corporation (LWCC) executive committee and past LWCC board of directors chairman David Frager.

Notices announcing this meeting will be posted and handed out throughout the community.

Email any questions to (admin@townmeetingorganization.com).

■ The Girls Fun Bunch

Feb. 25: Girls Fun Bunch Makes It Official

by Marlene Golden

The Girls Fun Bunch, a new club for widows who want to have fun, will next meet on Sunday, Feb. 25, at noon for lunch in the Terrace Room in Clubhouse I.

Then, at 1 p.m., the Club moves to a Clubhouse I meeting room for an organizational meeting to select officers and develop bylaws, followed by trivia games, fun

and lots of laughs.

While there, Club members discuss other new, fun things to do in the near future. The Club hopes to see you there.

RSVP to Marlene Golden at (301-438-7773) so the Club can get a count of people coming for lunch and trivia. Don't forget to bring a pen and paper with you, as well as a snack.

Let's have some fun!

■ Jewish Residents of Leisure World

March 9: Seminar on Obama and Trump Presidencies

On Friday, March 9, and March 23, Dr. Michael Siegel returns to conclude his talks on the evaluation of recent U.S. presidents. He will discuss the presidencies of Barack Obama and Donald Trump. The seminars are at 10 a.m. in Clubhouse I.

Tickets are \$20 per person, check only, payable to JRLW, and are available at the Clubhouse I E&R office beginning Tuesday, Feb. 20, at 8:30 a.m.



Custom Drapery

Valance, Cornice, Sheers, Blinds, and Shades

30% off

Free in Home Consultation

Authorized Dealer of Graber & Carole Fabrics

ELA INTERIOR DESIGN

Call: 240-676-4300



Income Tax Preparation



New Client Discount of 15% Home Visits if Necessary

Joseph M. Kissell
CPA, ChFC, MSA
Certified Public Accountant

(301) 460-0434

Club Looks Ahead to Gardens Competition and a Wildlife Park Trip



Brookside Gardens. Photo by Donna Zoldi



Hydrangea in Mutual 14. Photo by Julie Friedman

by Fred Shapiro

Club members have submitted their entries for the Friday, Feb. 23, photo competition on architectural interiors, and are looking ahead to the next competition, which features gardens.

March Program

At its Tuesday, March 13, program, professional nature photographer Irene Hinke-Sacilotto, leader of Osprey Photo Workshops and Tours, talks to the Club about garden photography.

Since 1979, Hinke-Sacilotto has led numerous tours under the auspices of Osprey Photo Workshops and Tours, and has conducted many photographic workshops for zoos, nature centers and organizations like the National Wildlife Federation and the Assateague Island Alliance.

She regularly lectures at Johns Hopkins University and conducts seminars for other educational institutions, retirement communities, and bird and photo clubs, including the New England Council of Camera Clubs.

Gardens Competition

With the abundance of gardens located in and

around Leisure World, the March competition is just that – photos of garden scenery.

The competition does not call for photos of individual flowers, birds flying over the garden or a garden sculpture, but rather panoramic garden views featuring plants, flowers, fountains and manmade objects.

The garden plots as well as the various areas that qualify as gardens in and around the golf course provide interesting aspects of scenery fitting the competition's definition of garden photography.

Brookside Gardens, the National Arboretum and other parks in the area offer photo opportunities. Photos of gardens taken during travels around the U.S. and overseas are welcome as well.

So go to it and select your best to compete.

Members can enter two photos each in the print and digital categories – four total – that meet the definition and parameters of the subject.

Trip to Wildlife Park

On Wednesday, May 30, Eyre Travel offers Club members a bus trip that includes views of the capital in Harrisburg, Pennsylvania, a boat ride on the Susquehanna

River and a free safari at Lake Tobias Wildlife Park.

The trip also offers photographers the chance to compete for prizes in two categories.

This trip fills up quickly,

so it is imperative that Club members sign up now.

Members who sign up are also asked to contact Fred Shapiro at (fshapiro@comcast.net).

■ Italian Social and Cultural Club

March 11: Festivale Italiano Returns

by Flo Merola

The Italian Social and Cultural Club holds its annual Festivale Italiano on Sunday, March 11, in the Clubhouse I Crystal Ballroom.

Socializing begins at 4 p.m. with a cash bar, followed by a buffet of typical Italian food served at street fairs, such as spaghetti and meatballs, sausage and peppers, chicken or eggplant parmigiana, and lots more.

The Club is excited to have the Monaldi Brothers back to entertain attendees with a variety of Italian standards. How about working off those extra calories by line dancing, doing the polka or learning to dance the tarantella?

Those who have attended the festival in the past know

what a wonderful evening is in store. Those who weren't there won't want to miss out again.

The cost is \$28 per person, checks only, made payable to the Italian Social and Cultural Club, available for purchase beginning Tuesday, Feb. 20, at 8:30 a.m. in the Clubhouse I E&R office. Checks must be received no later than Tuesday, March 6.

A table reservation may be requested, provided all those who wish to be seated together place their checks in the same envelope with a list of the names attached. For tables of eight or 10, call Angela Bufalo at (240-669-3909).

This event is open to Club members, their guests and all residents, so make reservations early.

March 14: 'Idar-Oberstein – Gem Capital of the World'

by Chuck Mason

A perennial speaker for the Lapidary Club, the always-interesting Kate Peterson is featured at the next meeting on Wednesday, March 14, at 7 p.m. in Clubhouse II.

Last year her topic was the "History of the Wedding Ring," and the year before it was "Jewelry: More Than Ornamentation." This year, her eighth program with the Club, her topic is "The History and Beauty of Idar-Oberstein – the Gem Capital of the World."

Having just visited Idar-Oberstein, Germany, last October, Peterson has fresh stories to tell, as well as accounts of the significant role

this "gem capital" has played in the history of gem cutting and jewelry.

Peterson is a board member of the Diamond Council of America and a training consultant for The Leading Jewelers of the World, an organization of high-end fine jewelers. She has had articles published in several jewelry industry magazines.



Kate Peterson, courtesy photo

The Club's meetings are open to all residents, where "open" means all residents are invited and welcome to join Club members for the evening. The evening's program is preceded by a short business meeting, and is followed by show and tell time and refreshments.



Just a smattering of stones that are available in the Lapidary Shop for jewelry-making and other creative pursuits. Photo by Leisure World News

Lapidary Shop

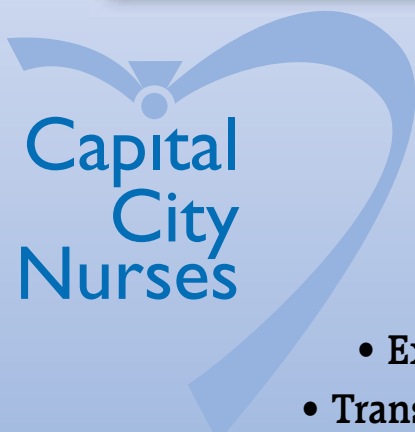
The Gem, Mineral and Lapidary Society of Leisure World, or Lapidary Club for short, has a lapidary shop in Clubhouse II that is used by trained Club members. The shop has all the equipment needed to make a cabochon

or to polish specimens for display, a great way to be creative. For more information, call shop steward Mark Parker at (240-723-5860).

For information about the Club or its meetings, contact president Frank Roddy at (301-598-3698) or (roddy.frank2014@comcast.net).



The Smart Choice for Home Care.



You are a whole person and we believe that we have the opportunity to make your day a little easier and more meaningful. As one of Maryland's original home care agencies, we have earned the trust of thousands of local families. Call today to arrange care for just a few hours or around the clock.

- Expert matchmaking • Help with Personal Care • Companionship
- Transportation to Doctors' visits & appointments • Medication reminders
- Meal prep, housekeeping & laundry • Care supervised by Registered Nurses

Flexible hours – Consistent caregivers – Simple set up – Available 24 hours a day License: MD RSA #399

www.capitalcitynurses.com • 301.652.4344

■ **The Vegetarian Society of Leisure World (VSLW)**

March 13: Vegetarian Buffet Dinner

by Bob Fenichel

Back by popular demand, the buffet dinner returns on Tuesday, March 13, at 5:30 p.m. in Clubhouse II. The food is from the Vegetable Garden Restaurant (Vegetarian Chinese) in Leisure World Plaza.

The meeting and buffet dinner provides attendees with an opportunity to socialize and meet new people. The cost is \$10 per person for members, and \$15 for non-members. Send checks, payable to VSLW, to treasurer Helen Gross at

(3100 North Leisure World Blvd. #710) no later than Tuesday, March 6. Be sure to include a telephone number and email address with the check.

Additional information on VSLW activities can be found at (www.vslw.org). Please note that everybody is welcome at VSLW activities; you don't have to be a vegetarian to participate.

The mission statement of VSLW is "to support group members in maintaining a healthy lifestyle by eating a plant-based diet."

■ **Ballroom Dance Club**

Twirling to Every Type of Ballroom Dance

by Joyce Hendrix

Club members are encouraged to renew their membership for 2018 at the next dance on Saturday, Feb. 24.

See the Events and Entertainment section of this publication for details about the dance.

Membership is \$10 per person for residents. Bring a check, payable to LWBDC, to renew Club membership in 2018.

Dance admission for members is \$10 per person at each dance. All non-members and guests pay \$15 per person, per dance.

The dress code for winter dances is dressy for the ladies

and jackets and ties for the gentlemen. The 2018 dance schedule is available at the dances.

All dances feature live music played in strict ballroom tempo with music from the 1920's through today.

All types of ballroom dance music are played, from a wide range of Latin, to swing, foxtrot, waltz, polka and quickstep.

March Dance

The next dance on Saturday, March 24, features Swing 'N On A Star. Residents enjoyed their music on New Year's Eve, and they're back next month for a repeat performance. Put on your dancing shoes and come dance with us.



EFFECTIVE AFFORDABLE DEEPLY REJUVINATING

RIVERDANCE THERAPEUTIC MASSAGE

202-306-089

Baronessa
Italian Restaurant
(Under new ownership)
1302 E Gude Dr Rockville MD 20850
(301) 838-9050
15% OFF
Dinner or Weekend Brunch
Cannot be combined with other offer. 15% off, up to max. \$20. Coupon must be presented at the time of purchase.
Expires March 15th, 2018

I WILL HEAR BETTER THIS YEAR

At Hearing HealthCare, Inc., we truly believe that **better hearing leads to a better life.**

Call today to schedule an appointment. **301.637.7238**

\$500 OFF
an AGX5, 7, or 9 two-device system.
Expires 3/31/18.

Call today for a **COMPLIMENTARY CONSULTATION**
Expires 3/31/18.

Hearing HealthCare, Inc.
Doctors of Audiology
Serving the community since 1996

Wheaton • 3913 Ferrara Dr
Rockville • 2403 Research Blvd, Ste 100

HearingHealthCareInc.com

Wills, Wealth Planning & Trusts

Phone: 301-518-0423
Email: Luann_Battersby@comcast.net
Housecall: No charge!
www.battersbylawoffice.com
Simple will: \$175/person; \$330/couple
Living will/medical directive \$80
Financial power of attorney \$90

Probate: flat fee or hourly, not a percentage of estate.

Estate and tax planning. I also assist clients in other related matters when they need my help.

Luann Battersby
Leisure World neighbor
3510 Chiswick Ct

■ **Fun and Fancy Theatre Group**

March 7: Grand Old Opry

by Hannelle Allen

Now that Irene Shaulis' enjoyable show, "A Night of Laughter," is over, the Group looks forward to its next Wednesday night meeting and show in March.

Rehearsals are underway for Stan Jones' Grand Old Opry show, scheduled for Wednesday, March 7, at 7:30 p.m. in the Clubhouse II auditorium. As always, admission is free for paid-up members, and \$5 for everyone else.

April Show

The big musical show coming in April, "Broadway Melodies of the Sixties," is a fun-filled work-in-progress.

The show has a large, talented cast, an abundance of show-stopping musical numbers, and a dynamic behind-the-scenes creative and organizational team.

Residents can expect to see publicity fliers and posters around the community in the

coming weeks.

Performers do not imitate or impersonate such fabulous Broadway musical stars as Streisand, Mostel, Lansbury, Channing, Goulet, Kiley, Ball, Picon, Bolger, Orbach,

Newley, and dozens more; but rather pay homage to them and their magical Broadway performances.

Reserved seating tickets go on sale on Monday, April 2, for four memorable shows only

– Friday, April 13, Saturday, April 14, Saturday, April 21, and Sunday, April 22.

A show "teaser" is presented on Wednesday, April 4, at the Group's monthly meeting in the Clubhouse II auditorium.

■ **Kiwanis Club of Leisure World**

Club Donates Washcloths to Needy

by Jack Colvis

The Kiwanis Club thanks residents who donated to its washcloth drive.

The donation box in the Clubhouse I lobby was overflowing twice in January with generous contributions.

The much-needed washcloths were delivered to Cornerstone Montgomery, the largest and most comprehensive provider of behavioral services in Montgomery County, and to the Chase Partnership House, a 36-bed transitional housing program serving single homeless men who

are struggling with addiction.

Residents who would like to spend some of their time serving the local community and children in small ways are encouraged to consider joining the Kiwanis Club of Leisure World.

If interested, contact Heather Benjamin-Alexis at (240-433-0948) or Jack Colvis at (301-598-5380).

The Kiwanis Club meets on the first and third Friday of each month in Clubhouse I.

To learn more about the Kiwanis International organization, visit (www.kiwanisone.org).



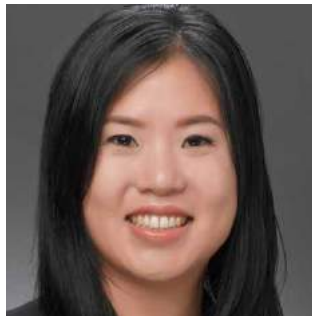
A collection box for donated washcloths was filled in January, courtesy photo

We Provide Compassionate Urology Care for the Residents of Leisure World.

Chesapeake Urology is conveniently located at 3801 International Drive in Silver Spring, just around the corner from Leisure World.



Richard A. Kurnot, M.D.
General Urology for Men and Women



Cheryl Shih, M.D.
General Urology for Men and Women: English, Mandarin Chinese, Spanish



Vik Uberoi, M.D.
General Urology for Men and Women: English, Hindi, Spanish



Anup A. Vora, M.D.
General Urology for Men and Women: English, Hindi, Gujarati, Spanish

Chesapeake
UROLOGY

The most personal care for life's most personal issues.

301-598-9717 chesapeakeurology.com

Prostate, Bladder and Kidney Cancers and Conditions • Kidney Stones • Erectile Dysfunction • Urinary Tract Infections • Pelvic Pain • Bladder Control Conditions • Enlarged Prostate
Female Urinary Incontinence • Pelvic Organ Prolapse • IC/Painful Bladder • Pelvic Pain

No Long Winter's Nap for Guild Artists



From left: Nancy Albrecht, Ann Bolt and Violet "Vicky" Batkin hang paintings for the exhibit at Signal Financial Federal Credit Union. Photo by Fred Shapiro

by Ann Bolt

Eight artists are feeling the love at Signal Financial Federal Credit Union's art exhibit in the Administration Building. The exhibit features pets and places, but perhaps viewers will also spot the lost loves painting.

All residents are encouraged to take a look and cast a vote for their favorite painting. All the titles of the paintings include the word "love." The artist who receives the most votes will be recognized and awarded by the staff at the Credit Union.

Artists professing their love include Violet "Vicky" Batkin, Nancy Albrecht, Nettie Geier, Kathy Hopkins, Maria Clark, Marie Powell, Gretchen Wiederrecht and Ann Bolt. The exhibit continues through February.

Clubhouse I Exhibit

The Clubhouse I hallways feature a new show, despite some cancelled classes. Fifteen artists are displaying their works of oil, watercolor, pastels and colored pencil depicting flowers, animals, birds, people and places.

See if the painting by Nancy Veit can fool your eye. Some of these paintings were done in Open Studio, others under the tutelage of teachers Barbara Piegari, Ron Erlich, Sharon Minor and Millie Shott. Other members are studying with Firouzeh Sadeghi and Genevieve Roberts and are preparing to exhibit elsewhere, or later.

RAG members who bundled up for the cold and delivered their paintings to the clubhouse include Teresa Milne, Mary Boyer, Betty Feniak, Nancy Veit,

Dee Williams, Maria Clark, Violet "Vicky" Batkin, Maria Powell, Patty Elton, Kathy Hopkins, Nettie Geier, Marvin Sirkis, Ann Bolt and Annette Crowe.

Other Exhibits

The Open Studio exhibit, "Wheels," continues this month. Other places of interest for exhibiting works include the Jewish Community Center Art Show, which sends a scout to select entries from Leisure World on Monday, Feb. 26, from 11 a.m.-2 p.m. in Clubhouse I.

Any resident may bring three works of art to the clubhouse, and the Center will choose one to exhibit. The exhibit is held Sunday, April 15 through Monday, May 7, at the Center.

Woman's Club in Chevy Chase holds their 43rd Annual Art Show Sunday, April 15 through Tuesday, April 17, at their clubhouse located at 7831 Connecticut Ave. Millie Shott, RAG teacher, helped found this show.



"The Eggshell Love" by Nettie Geier reflects the delicate month of February, in which hearts are broken and mended. Photo by Ann Bolt

Classes

Late winter is a good time to start a new class – better weather makes for a better mood.

Classes start the week of Monday, Feb. 19. Select your class and show up at the studio.

Art Education

Fighting the afternoon droop? Let the Guild take you to another era through the education program's video history presentation.

After several months' hiatus, Teresa Milne promises coffee and cookies as the Renaissance period is shown on the second Thursday of each month, beginning Thursday, March 8, at 3:30 p.m. in Clubhouse I. All residents are welcome.

The Guild thanks Laurna and Brian Thomas for their generous donation of art supplies.

BP SERVICE
Carpet & Upholstery Cleaning



Commercial and Residential
Pet Stain Removal, Gum Removal
& Deodorize
We Move and Replace Most Furniture

Houses/Apts/Offices/Churches/Daycares

Benjamin Pena
Office: 301-942-8789 • Cell: 240-505-5213



Kathleen Kane, Assoc. Broker

Kathleen and Eileen Kane

Honored To Serve You For 35+ Years With
Cathy Gilmour Real Estate And Proudly Continuing That
Same High Level Of Service With Long & Foster



Eileen Kane, Assoc. Broker

J – SORRY! It's under contract! But keep checking, there will be others! Fabulous "J" model with garage in Building Two of **The Greens**. **\$200,000**

FF w/GARAGE – Gorgeous 2 Bedroom/2 Bath apartment in **Vantage Point East**. Beautiful views from extra-large enclosed balcony. Freshly painted and wood floors. Open floorplan. **\$324,800**

B – In **Turnberry Courts**, Building 3 on the 5th floor, two bedrooms, two baths, living room, dining room, table-space kitchen, enclosed balcony, light and bright. **\$188,900**

RENTAL: ELLICOTT – Three bedrooms/two baths in **Mutual 19B**; hardwood floors, new kitchen appliances, newer countertops. **\$1,650/month + electric**

SELLERS – This is YOUR market! Inventory of homes is low and interest rates remain low. This is the time for you to make the move you've been planning. Contact Kathleen or Eileen to assist you.

BUYERS – With low inventory and still very low interest rates, now is the time to put your house on the market and join us in the wonderful community of Leisure World!

*Dedication makes
the difference!*

LONG & FOSTER REAL ESTATE, INC.

Residential & Commercial Real Estate • Mortgage • Title • Insurance • Property Management



Direct: 240-460-8647

Leisure World Plaza Office: 301-598-7500

Kathe.E.Kane@Gmail.com

Feb. 27: Presentation by Author Ai-Ling Louie

by Dave Edfors

On Tuesday, Feb. 27, the Unitarian Universalists of Leisure World present a talk by Asian-American author Ai-Ling Louie.

Louie is an accomplished writer of children's stories and has written biographies of famous Asian-Americans, including fashion designer, Vera Wang, cellist Yo-Yo Ma and his big sister, Yeou-Cheng, and astronaut Kalpana Chawla.

She informs and entertains the group about how she creates her children's stories.

Louie was born in New York City and went to public schools in Oceanside, New York.

She grew up hearing stories from her parents and their friends about their struggle for acceptance as truly American.

Louie graduated from Sarah Lawrence College and has a master's degree in education from Wheelock College and a master's degree in library studies from Rutgers University.

Join the Unitarian Universalists on Feb. 27, at 2:30 p.m. in Clubhouse II for this interesting and enlightening presentation, followed by light refreshments and conversation.

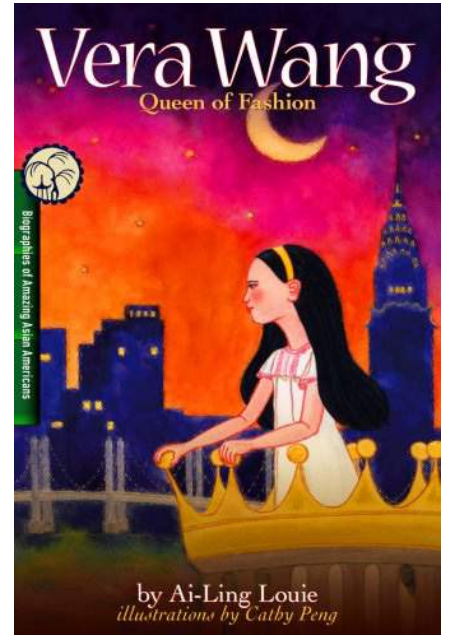
Attendees don't have to be members of the UULW to attend meetings. All residents



Author Ai-Ling Louie, courtesy photo

are welcome.

For information about Leisure World's Unitarian Universalist organization, contact Mike Benefiel at (240-204-2061) or (mike_benefiel@yahoo.com).



Louie has authored biographies of several high profile Asian-Americans, including designer Vera Wang.

OLNEY
ASSISTED LIVING
Memory Care *by design.*

Building true friendships.

For those living with dementia, it's not the disease that defines the person — it's the relationships they establish along the way. As a resident at Olney Assisted Living, we encourage your loved one to maintain those relationships and develop new ones, too.

**Bond with your loved one in new and unique ways.
Connect with Olney Assisted Living today.**

301.570.0525
16940 Georgia Avenue • Olney, Maryland 20832
www.olneymemorycare.com

Creating positive partnerships the Artis way

Managed by **ARTIS** SENIOR LIVING MANAGEMENT

An Equal Opportunity Employer-M/F/D/V

Find Leisure World of Maryland on facebook at: www.facebook.com/LeisureWorldofMaryland/

or follow us on Twitter: @LeisureWorldMd

■ Center for Lifelong Learning (CLL)

A Unique Tool for Effective Communication

by Arthur N. Popper

All of us want to be able to effectively communicate our ideas to others and to be understood by the people in our lives, whether family, friends or colleagues.

Often we misunderstand or are misunderstood because we are trying to communicate with people who differ from us in personality type. We speak in our preferred “language,” even as the people to whom we are speaking are waiting to hear something spoken in their “language,” whether with words, voice tone or even gestures.

As a way to help residents improve their communication skills, the Center for Lifelong Learning (CLL) introduces a new class, “A Unique Tool for Effective Communication,” given by resident Dianne Bradley. This class is designed for people who would like to improve their communication skills.

Over three class sessions in March, students will learn about themselves as well as others, and discover ways to enhance their communication skills. This course will identify six personality types based on the Process Communication Model (PCM), which will be demonstrated and described.

Students will learn the needs, perceptions and communication styles of each personality type and practice communication skills in a fun and non-threatening way using realistic scenarios. Learning about the PCM can help students assess their own person-

ality type as well as those of others and give individuals options for the ways in which to communicate.

Bradley was instrumental in adapting PCM for the educational community. Along with some of her colleagues, she developed a training prototype for use in educational settings and since then, has given numerous presentations, seminars and workshops to educators to help them motivate and reach all of their students.

She worked for Montgomery County Public Schools for over 30 years as a general educator, special educator, counselor, teacher specialist and administrator.

For the last 10 years of her professional career, Bradley was the director of creative initiatives in teacher education, a graduate education program at the University of Maryland.

She has been a consultant in several local as well as out-of-state school systems and has presented at numerous local, national and international conferences.

She is the author of several articles on the use of PCM in educational settings and has co-authored two books for educators on PCM. One of her books, “Here’s How to Reach Me: Matching Instruction to Personality Types in Your Classroom,” has been translated into several languages.

She has a bachelor’s degree in elemen-



Dianne Bradley. Photo by Fred Shapiro

tary education from the University of Maryland, two master’s degrees – one in special education from California State University and another in school guidance and counseling from Bowie State University, and a doctorate in education with a specialization in inclusive education from Walden University.

Bradley moved to Leisure World, along with her husband, Maurice Zeeman, almost three years ago. She grew up in Bethesda, Maryland, and has lived most of her life in the Washington, D.C., area.

For course registration details, see the Community Classes and Seminar section of this edition.

For more information about all CLL courses and lectures, see (www.cllmd.com).

■ Jewish Discussion Group

Feb. 25: ‘Trotsky and the Jews’

by Jerome “Jerry” Cohen

At the Group’s next meeting on Sunday, Feb. 25, Ed Cohen presents his book report on “Trotsky and the Jews” by Joseph Nedava.

Leon Trotsky was born Leiba Bronstein, and as a young man, quickly became a rising star in the Russian communist movement. He was Lenin’s handpicked successor.

At the meeting, Cohen tells the rest of the story and more. Group members then launch into regular, new topic discussions.

March Discussion Group

The Group is pleased to have a special presentation scheduled for Sunday, March 25. Bill Sumner, a docent at the U.S. Holocaust Memorial Museum, gives one of his captivating talks about

the regular museum tours he and other docents provide for school groups and law enforcement agencies. A question and answer session follows the presentation.

Anniversary

Jewish Discussion Group is one of five Leisure World organizations honored to co-sponsor the “Celebrate Israel” program, a celebration of the 70th anniversary of the State of Israel. For more information about the program, see page 31 of this publication.

January Meeting

At the last meeting in January, the Group had lively debates on the following topics:

- President Trump’s threat to withhold Palestinian financial aid if the Palestin-

ians do not begin to negotiate a peace settlement with Israel

- threats made by Al-Qaeda leadership against Americans and Jews worldwide over the withholding of Palestinian aid
- American philanthropist Charles Bronfman’s insistence on a two-state solution
- Chancellor Angela Merkel’s concern over rising anti-Semitism in Germany

General Information

Jewish Discussion Group invites all to attend its free discussion group sessions, which are held on the fourth Sunday of the month from 10:30 a.m.-noon in Clubhouse II. The Group has been enjoying a growing number of participants each month and still has room for more.

Jewish Discussion Group was previously known as Jewish Friendship Group or Jewish Fellowship Group.

March 1: Celebrate the Holiday of Purim

by Jonas Weiss

Purim commemorates the saving of the Jews of the ancient Persian Empire from annihilation.

A service with readings of the megillah (scroll) of Esther and hamantashen help to celebrate the holiday on Thursday, March 1, at 9:15 a.m. in Clubhouse II. Costumes are optional.

Brunches

On Sunday, Feb. 18, the Jewish Residents of Leisure World (JRLW) hold a brunch at 10 a.m. in Clubhouse I featuring Karen Batshaw, who discusses the Jews of Greece during the Holocaust.

If seats are still available, entrance at the door is \$15.

The next brunch is on Sunday, March 18. Dr. Jason

Weise discusses the use of medical marijuana (cannabis). Weise describes the Maryland medical program and how to find a physician and dispensary.

He also addresses the misconceptions that people have about the use of this treatment.

Weise has a Maryland dispensary license for cannabis that he uses as an alternate pain treatment option to opioid prescription medication.

He also established a consulting company to educate physicians, patients and dispensary agents about the benefits of medical cannabis.

To attend the March 18 brunch, send checks of \$12,

payable to JRLW, to Shirley or Jerry Gordon at (15311 Beaverbrook Ct., Apt. 3A, Silver Spring, MD 20906).

Celebration of Israel

JRLW joins the Jewish War Veterans and other Jewish organizations at Leisure World in celebrating the State of Israel's 70th anniversary on Tuesday, March 6. See the Jewish War Veterans article on page 31 for details.



Religious Services

Rabbi Fink conducts a conservative service on Friday, March 2, at 7:30 p.m. in The Inter-Faith Chapel.

Popular abbreviated Sabbath services with Rabbi Moshe

Sambar continue on Saturday, Feb. 17, 24 and March 3 at 9:30 a.m. in Clubhouse II. There are discussions of the Torah portion as well as the study of Rabbinical writings.

Donations

For the Torah maintenance fund, send checks, payable to JRLW, (\$25 minimum) to Carol Wendkos at (14805 Pennfield Cir., Apt. 212, Silver Spring, MD 20906). Janet Lazar at (15311 Beaverbrook Ct., Apt. 1B, Silver Spring, MD 20906) receives donations for prayer books (\$25 minimum).

Donations for Kiddush (\$25 minimum), or an Oneg (\$25 minimum), or Yiskor or general tzedukah go to Susan Weiss at (3739 Glen Eagles Dr., Silver Spring, MD 20906).

Ledo Pizza
Leisure World Plaza
 3850 International Drive
 Silver Spring, MD 20906

WE DELIVER
to The Leisure World Community!
 Delivery Friday-Sunday from 4pm till 7pm Only.
 Minimum Order \$20
ORDER NOW: 240-560-6354



\$5 OFF Ledo Pizza
 any \$25 purchase or more.

Valid only at Ledo Pizza Leisure World. Not valid with other offers. This coupon has no cash value. Void if copied or where prohibited. Coupon must be present at time of purchase. Expires 3/31/18.

COLLEGE PERFORMING ARTS SERIES
 February 21-24, 8 p.m.
 February 25, 2 p.m.

AN ENEMY OF THE PEOPLE
 By Henrik Ibsen

In a quest to expose the truth, a doctor realizes that honesty and idealism doesn't exist in the face of selfish "practical" interests, but he is determined to defy authority and stand for what he believes in.

Tickets are \$10 Regular, \$8 Seniors, & \$5 Students with Student ID

ROBERT E. PARILLA PERFORMING ARTS CENTER
 Montgomery College | 51 Mannakee St. | Rockville, MD 20850
 www.montgomerycollege.edu/pac | Box Office: 240-567-5301

Leisure World News is also available on residents.lwmc.com

March 7: Former Assistant District Attorney Steven Kline

by Carole Mund

All residents are welcome to an open meeting on Wednesday, March 7, to hear former assistant district attorney Steven Kline speak on current issues.

Kline is a Guild Certified Master Tour Guide for Washington, D.C., and a docent at the Library of Congress. He was formerly special assistant attorney general for Medicaid fraud and administrative law judge for the New York City Department of Education.

The meeting is at 12:30 p.m. in the Clubhouse I Crystal Ballroom. Refreshments are served.

Spiritual Adoption Luncheon

The spiritual adoption luncheon is on Wednesday, April 18, in the Clubhouse I Crystal Ballroom.

One of NA'AMAT's missions is to provide services such as

daycare programs and other support services to children in Israel. When a member attends the luncheon and/or donates, the funds are used to directly provide programs that meet the needs of children. So in essence, the individual "spiritually adopts" or sponsors the care of children in need.

Executive Board Welcomes All Members

NA'AMAT is a charitable organization dedicated to helping NA'AMAT Israel provide educational daycare, vocational training and legal aid for women, services and assistance for new immigrants, and centers for the prevention and treatment of domestic violence. It was formally known as Pioneer Women.

By getting involved, volunteers have the opportunity to meet new friends and connect with an organization that makes a difference in the lives of so

many. Consider attending the next executive board meeting on Tuesday, Feb. 20, at 10:30 a.m. in Clubhouse I.

Donor Credit

The many activities Club members enjoy not only provide opportunities for socialization with friends and neighbors, but also serve as fundraisers to support the many programs NA'AMAT provides.

Donor credit is simply money attributed to each member over the cost for participating in activities sponsored by NA'AMAT. Contact Theda Rosenblum, donor credit chairperson, at (301-598-9105) for any questions about your donor status.

Save the Date

- May 10 – Donor Luncheon at Norbeck Country Club

Trips

A cruise to Bermuda is planned

for April. Check the Club Trips section of this publication more information.

For more information about the Club, call co-presidents Trudy Stone at (301-438-0016) or Gladys Blank at (301-438-9666). For tribute cards, call Linda Schoolnick at (301-681-1076).

Chairworks Plus Furniture Service

- Antique Restoration
- Furniture Repair
- Chair Gluing

Serving the Leisure World Community for over 30 years



Rick Sussman

301-502-0018
410-795-9147

18111

- ✓ Cutting-edge Microscope-centered Dentistry
- ✓ Dentures
- ✓ Gum Treatment
- ✓ Root Canals
- ✓ Sedation Dentistry
- ✓ Bonding
- ✓ Extractions
- ✓ Bleaching
- ✓ Veneers

We Cater to Cowards • Same-day Emergencies • Evening Hours
Will File Forms for All PPO Insurance Carriers

Look and feel your best!



COMPREHENSIVE FAMILY & COSMETIC DENTISTRY

\$50 off your first visit

Not valid with third party plans, new patients only.

Located at MedStar Montgomery Medical Center
18111 Prince Philip Dr.
Suite T-17
Olney, MD 20832

T: 301-774-7887 • www.OlneyDental.com

Hadassah Supports Israel Bonds at Gala Event

by Barbara Eisen

Hadassah Greater Washington and Israel Bonds Washington Women's Division invite all residents to "Israeli Cocktails and Couture" featuring guest speaker Liraz Cohen Mordechai.

The gala event is on Sunday, March 11, from 3:30-5:30 p.m. at the Jewish Community Center of Northern Virginia located at 8900 Little River Turnpike.

Mordechai speaks on "The History of Israeli Fashion from 1909 to Today." The couvert is \$18 plus a commitment to buy a minimum \$100 Israel bond for Hadassah (Double Mitzvah).

Cocktails, wine and light refreshments are served. For more information about registration, call the Hadassah Greater Washington office at (301-881-8203).

Trip

Hadassah visits the Dennis and Phillip Ratner Museum on Tuesday, March 6, at 10:30 a.m. See the Club Trips section of

this publication for details.

Brunch

All residents are invited to Hadassah's annual brunch and fashion show on Sunday, Feb. 25, at 10 a.m. in the Clubhouse I Crystal Ballroom.

The cost of the event is \$18 per person. Send checks, payable to Hadassah, to Linda Silverstein at (16 Jaystone Ct., Silver Spring, MD 20905). Reservations are due by Monday, Feb. 19.

Checks are not accepted at the door. For questions, contact Linda at (301-879-2887) or (linjoy357@gmail.com).

Judaic Study Group

The next meeting of the Hadassah Judaic Studies Group is on Monday, Feb. 19, at 1:30 p.m. in Clubhouse I. The study group meets shortly before the Festival of Purim, so the discussion focuses on the story's background and setting.

Do you know the two most unusual things about the Book of Esther? Please join the group and find out. Bring your questions and comments. All are welcome. Contact Peri Schuyler at (301-869-2968) or (perislaptop@aol.com) for further information.

Pin Sale

Hadassah continues selling unique pins, handmade by resident fabric artist, Bobbi Gorban. The pins are \$18. Order forms are available at each Hadassah meeting or in the Hadassah mail slot at the Clubhouse I E&R office. For questions, contact Judy Rumerman at (judyrumerman@gmail.com) or (301-680-0850). You don't have to be a member to buy a pin.

Greeting Cards

Elaine Schenberg and Jan Bloom sell Hadassah greeting cards. The prices are \$2.50 each or five for \$10. Cards are displayed and sold at every Hadassah meeting. Please call Elaine at (301-598-0079) or Jan at (301-593-7720) to buy cards between meetings.

Youth Project

Larelda Gruber (301-598-5922) is chair of Youth Aliyah/Children at Risk. This project helps disadvantaged children in Israel. The goal is to create a circle of \$1,000, made by individual contributions of \$40. Please send donations to Larelda at (3200 N. Leisure World Blvd. #201, Silver Spring, MD 20906).

General Information

Hadassah sponsors many activities to further the worthwhile projects it supports in medical, educational and social programs in Israel and the U.S.

If interested in knowing more about Hadassah, contact one of its membership vice presidents: Ruth Temin at (301-288-7387) or (teminar@comcast.net); Lois Fields at (301-585-9804) or (loisfields2@earthlink.net), or Natalie Rosen at (301-279-5640) or (bnrosen@comcast.net).

FREDRICK A. ISAACS, M.D., P.C., FACS BOARD CERTIFIED OPHTHALMOLOGIST

Latest Advances in Cataract Surgery including the Restor[®] & LenSx (Femtosecond)
Treatment of Glaucoma & Macular Degeneration
(Avastin, Lucentis & Eylea Injections)
Complete Exams and Contact Lens Exams

Full Service Optical Shop

Glasses, Sunglasses, Contact Lenses

We offer the latest diagnostic equipment for assessment of retinal disease and glaucoma.

ON PREMISES: Visual Fields, Cirrus HD - OCT, Fluorescein Angiography, Stereo Disc Photographs, Corneal Pachymetry and Topography.



3801 International Drive, Suite 208
Silver Spring, MD 20906
301-598-8500

LEISURE WORLD PLAZA PROFESSIONAL BUILDING

EMERGENCY APPOINTMENTS AVAILABLE

Interested in advertising in the Leisure World News?

For information, email lwnewsads@lwmc.com



March 6: Celebration Features Guest Speakers from Israeli Embassy, Student A Cappella Groups



At left, Charles E. Smith Jewish Day School's singing group, Shir Madness, perform. At right, B'nai Israel Congregation's singing group, The Mazeltones. Both Jewish teen a cappella groups perform at the State of Israel celebration on Tuesday, March 6. Courtesy photos

by Fred Shapiro

The Jewish War Veterans Post 567 celebrates 70 years of the State of Israel on Tuesday, March 6, at 7 p.m. in the Clubhouse II auditorium.

The program features guest speakers Oren Geron and Vanina Waingortin from the Embassy of Israel in Washington, D.C., and Rabbi Itel Oron, as well as performances by a cappella groups Shir Madness, from the Charles E. Smith Jewish Day School, and the Mazeltones, from the B'nai Israel Congregation in Rockville, Maryland.

Geron, Counselor for Public and Academic Affairs, and Waingortin, Director of National Initiatives, discuss the history of Israel since its inception 70 years ago.

Oron, the Israeli Shaliach of the Greater Washington area, speaks on the role of religious Zionism in the founding of Israel.

He was born in Tel Aviv and served in the Israel Defense Forces. He is an alumnus of Yeshivat Har Etzion, where he was ordained.

He also received a bachelor's degree in education and Jewish philosophy from Herzog College in Gush Etzion. Oron has been a scholar in residence at many U.S. synagogues and campuses.

Entertainment

The Mazeltones is a Jewish teen a cappella group with members from Maryland, Virginia and Washington, D.C. They perform a variety of songs in both Hebrew and English, most of which are composed or arranged by their own members.

Their goal is to share their love of

music, service and Judaism with the local community.

The locally recognized Shir Madness is known as the place where many young Jewish singers get their start before moving on to collegiate and other a cappella groups.

The group was the 2017 2nd place winners at Kolot HaYam, the high school Jewish choral festival.

With songs ranging from American secular music to Israeli liturgical and pop, Shir Madness brings a breadth of talent and voices.

Following the program, refreshments are served in Clubhouse II.

Admission is free, but attendees are asked to consider a charitable donation to one or both of two charities in Israel – Hadassah Hospital Breast Cancer Fund and American Friends of Magen David Adom.

Containers will be set up at the entrance to collect your checks and/or cash donations.

The celebration's other sponsors include Hadassah, NA'AMAT, the Jewish Discussion Group and the Jewish Residents of Leisure World.

RECYCLING REMINDER
We Do Recycle Cardboard!

From the Sanitation Department



In-Home or Office Computer Help
PC - Mac - Tablet - Smartphone

Hardware - Software - Network
Wireless Troubleshooting
Virus - Spyware Removal
Data Recovery

301-495-3390
Press "2" if urgent

Bob Mann
watzanetwork.com
helpme@watzanetwork.com

Watza?
Serving the Leisure World community 10+ years
5,000+ customer appointments!

MasterCard VISA • Insured
WatzaNetwork? is a service of Watza, LLC

Funding Tomorrow's Artists

by York Van Nixon III

AIM scholarships went active on the group's website on Jan. 16. Announcements were sent to high-school guidance counselors in Montgomery County, Washington, D.C., and Prince George's County.

As expected, requests began pouring in the next day. Students seeking financial assistance submitted with their application a resume, narrative and copy of their recent transcripts exhibiting a 3.5 GPA or higher.



While the financial need was anticipated, the impressive accomplishments from seniors headed to college in the fall were not. Many applicants already had resumes with stellar credits in performance

and exhibition. In addition to expanding the group's poetry contest, POETEST 2018, AIM also plans to double its scholarship to \$20,000 in 2019. In the next fiscal year, the group hopes to make donations to the scholarship fund tax deductible.



At left, Cafe AIM regular Lavenia Nesmith croons to an audience in the Clubhouse I Crystal Ballroom Feb. 9. At right, a trumpeter accompanies her. Photos by Maureen Freeman, Leisure World News



Life is all about Choices...

...now is the time to make yours!

An engaged life is all about options. Whether your taste is contemporary or traditional, urban or eclectic, your home at Gardenside will be a reflection of your personal sense of style. Our wide range of floor plans offers the perfect space for you. Our one-, two- and three-bedroom selections feature open-concept floor plans with modern kitchens, generous closets, balconies, and large windows to welcome in natural light. With personalized customization available, your apartment will be the perfect place to call home.



701 King Farm Blvd. • Rockville, MD
www.inglesidekingfarm.org

Call 240-398-3846 while you can still take advantage of Charter Club benefits and availability!

Ingleside at King Farm is a CARF accredited, not-for-profit, continuing care retirement community. Ingleside at King Farm is expanding with the proposed building of 121 new independent living apartments, 32 private assisted living memory support suites, and a Center for Healthy Living, subject to approval by the Maryland Department of Aging.



Potluck Brunch, Spring Trips and an Upcoming Election of Officers

by Mike LaPoint and Pat Ritter

The Alliance's weekly evening game nights continue to grow in attendance and popularity. Game nights are held on Wednesdays at 6:30 p.m. in Clubhouse II.

All are invited to join the fun-filled evenings of games and munchies. Bring your favorite games and a snack to share, if you wish.

The monthly potluck brunch and meeting is on Saturday, Feb. 17, at noon in Clubhouse II. Join the Alliance for brunch, fellowship and an update on upcoming events.

The monthly meetings are a great opportunity to learn more about the Alliance and to meet some of the members and officers. At this month's meeting, the group discusses its upcoming election of officers.

Spring Plans and Election

Plans are in the works for several new events and activities to be held in the coming months, including a square dancing demonstration and instruction, provided by DC Lambda Squares.

The Alliance's board sponsors a members' appreciation brunch in April. The brunch is free for all members who have paid their 2018 membership dues.

Other proposed activities for 2018 include trips to the National Museum of African American History and Culture and visits to other historic and cultural attractions in Washington, D.C., and the surrounding area. The Alliance will also debut its LGBT movie night series in March.

Also in March, the Alliance holds its annual elections for LW LGBT officers. Anyone interested in running for office should contact a current

officer, or email (lwlgbt@gmail.com). Elections are held at the monthly potluck and meeting on Saturday, March 17.

Past Events

The Alliance had an active January that included a workshop by personal lifestyle coach Jeff Hughes on "The Real 'Secret' to Living a Longer, Happier and Healthier Life."

Attendees learned about "blue zones" – communities scattered around the globe where individuals not only live extraordinarily long lives, but also do so with their physical and mental faculties functioning as if they were many years younger.

Hughes discussed the characteristics of such communities and how people can utilize these factors to impact their own lives.

On Jan. 22, several Alliance members attended a forum at Sibley Memorial Hospital that included a screening of the documentary film, "A Place to

Live: The Story of Triangle Square," followed by a group discussion on housing issues and options for members of the LGBT community.

The film was very informative and insightful on what is possible when a group of dedicated and inspired people unites to develop and implement a common dream. Sibley has a strong outreach program to the LGBT community, and hosts frequent gatherings and presentations on topics of interest to the community.

Sibley has also created the position of "LGBTQ Resource Nurse," a medical provider who meets with all new employees to provide them with training on the special issues related to the community.

To learn more about the Alliance, email (lwlgbt@gmail.com), or attend the next monthly potluck meeting on Feb. 17.

■ Republican Club

Feb. 19: Get To Know Two of the Candidates

by Fred Seelman

The next meeting of the Republican Club is on Monday, Feb. 19, at 1:30 p.m. in Clubhouse I. The Club introduces members to two GOP candidates:

Anajali Reed Phukan and Penny Musser.

Phukan is running for Maryland Comptroller, the state's chief financial officer. The office's main duties include collecting state taxes and other revenue. Phukan is a certified professional accountant with a master's in business administration. Contact her through her website at (<https://mscomptroller.weebly.com/>)

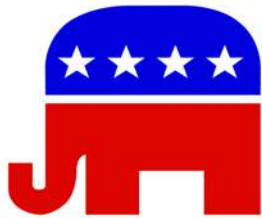
Musser, a business owner who lives in Boyds, Maryland, is an at-large candidate

for Montgomery County Council. She is seeking improvements in education, spending, taxes and crime fighting. She can be reached at (pennymusser79@gmail.com).

Come to the February meeting to hear these candidates speak and to participate in the annual Club elections. If interested in becoming a candidate, contact the Club president or vice president (contact information listed below).

Send comments or questions about these or any other Club matters and/or offers to volunteer to Club president Fred Seelman at (fseelman@gmail.com) or first vice president Ray Spieler at (301-460-3563).

Join the Club for another quality event at on Feb. 19, and enjoy our refreshments.



■ National Active and Retired Federal Employees (NARFE) Chapter 1143

Feb. 26: Nonprofit Rep Speaks at Meeting

by John Moens

On Monday, Feb. 26, Gregory Jackson, representative from the national nonprofit group Blacks in Government, addresses the chapter at 2 p.m. in Clubhouse I. Refreshments are available starting at 1:30 p.m., and all residents are invited to attend.

March and Beyond

On Monday, March 19, the chapter is briefed by Dr. Gary Roundtree, president of NARFE's Maryland Federation, and its legislative director, Sudan Hayley.

On Monday, April 16, officer Sharif Hadayat discusses how to avoid scams and what to do if

they happen.

Chapter 1143 invites all residents to a special presentation on Monday, May 21, at 2 p.m. in Clubhouse I as Del. Ben Kramer and the ASPCA discuss legislation to protect Maryland's four-legged friends.

In June, member Evelyn Sturgis and treasurer Jewel Lee arrange the chapter's banquet. The

December 2017 banquet had great food at great prices, and a wonderful setup, so the group is looking forward to this one.

Membership secretary John Lass is setting up a website for the chapter. And, thanks to Lee, the chapter not only has great snacks at its meetings, but a suggestion box as well.



AUTO BODY

Rockville Central

Just off East Gude Drive

301-424-3500

**FREE ESTIMATES
IF YOU CAN'T COME TO US
WE WILL COME TO YOU**

SPECIAL OFFER

- ⇨ **Paintless Dent Removal from \$75**
- ⇨ **Free Pick up & Drop Off**
- ⇨ **Free Towing to Shop**
- ⇨ **Free Touch Up Paint**
- ⇨ **Lifetime Warranty on All Repairs**
- ⇨ **Special Discounts for LW Residents**

**We Happily Handle All Insurance
Claims for You**

Ask for Richard or Tony

Leisure World Association for African American Culture (LWAAAC)

April 18: Come See 'Two Trains Running' at Arena Stage

by Patricia Means

All residents, family and friends are invited to attend the play "Two Trains Running" on Wednesday, April 18, at noon at Arena Stage in Washington, D.C.

For additional information, see the Club Trips section of this edition or call Juanita Sealy-Williams at (301-822-4531).

Membership

The 2017-2018 mid-term membership is \$10 and covers the period between Jan. 1 to June 30 for new members (not applicable to returning members).

Checks only, payable to LWAAAC, may be submitted at meetings, via the LWAAAC mail slot in the Clubhouse I E&R office or mailed to (LWAAAC,

PO Box 12316, Silver Spring, MD 20908).

Celebrations II

The PDF format conversion and photo process are ongoing for Celebrations II.

The Drumbeat

The January edition of The Drumbeat was sent to members who provided email addresses or informed the Association that they did not have email access. The next edition is issued in April 2018.

If you did not receive the January edition or want future editions, let the Association know by sending a message to (lwaaac1@gmail.com), or dropping a note in the LWAAAC mail slot in the Clubhouse I E&R office.



Choose the Professional with all the Strategic Teaching Aids...
Floor Plans, Free Community Booklet, Preferred Riderwood Realtor

Top 1% of Agents Nationwide • #1 Lister in The Regency, Mutual 25
Weichert Top Producer • Seniors Specialist
Community Resident • Former Montgomery County Teacher



Email: sueheyman@aol.com
Website: www.sueheyman.com
Office: 301-681-0550



Sue Heyman 301-580-5556



JUST LISTED! \$138,900

Garden Apartment Condo
2BR, 2FB, fresh paint, new fridge & faucet, lge laundry rm, wooded view, most utilities incl!



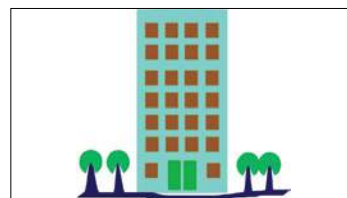
JUST LISTED! \$159,900

Fairways Hi-Rise "E"
2BR, 2FB, fresh paint, new carpet and cabinets, granite counters, view of fountain & ponds, 980 sf!



COMING SOON! \$175,000

"Berkley" Co-op Townhouse
2BR, 1FB, 2HB, contemporary renovation top to bottom, open kit w/ quartz, stainless steel!



COMING SOON! \$180,000

Vantage Point Hi-Rise "B"
Luxury bldg, 2BR, 2FB, traditional floor plan, kit pass-thru to DR, owner's BR w/ step-in shower!



UNDER CONTRACT! \$439,900

Creekside Mid-Rise "H"
Garage spc, 2BR + den, 2FB, end unit, multiple exposures, HWD flrs, exquisite kit w/ granite!



LISTING JUST SOLD! \$99,000

"Hampton" Co-op Apartment
2BR, 1FB, full-size w/d in unit, all utilities included in monthly fee, assigned parking!



LISTING & BUYER SOLD! \$254,900

English Village Condo Patio Home
2BR, 2FB, 2-car gar, enclosed patio w/ low maintenance fence & gate, all electric, utilities included.



LISTING & BUYER SOLD! \$269,900

The Green "M" w/ Garage
Best value in The Greens, 3BR, 2.5BA, large enclosed balcony, fresh paint, carpet & lighting!



BUYER JUST SOLD! \$520,000

The Overlook "L" w/ Garage
3BR, 2.5BA, end unit, golf course views, updated kit, HWDS, sep DR, expansive enclosed balcony!



LISTING JUST SOLD! \$670,000

Regency "Arts & Crafts" Model
13-years young, 2-level, luxury detached home, 4BR, 3FB, great room, gas FP, deck, 2-car garage!

■ Going It Alone Club

Club Offers Relaxation and Fun Every Saturday Afternoon

by Elizabeth Brooks-Evans

The Going It Alone Club (GIAC) meets every Saturday (known as Saturday Afternoon Live - SAL!) beginning with armchair travel at 2 p.m. in Clubhouse II.

Armchair Travel

On Saturday, Feb. 17, well-known travel guide Rick Steves leads the armchair travelers through Hamburg, Germany's mighty port city, which rose from the ashes of World War II with a gleaming skyline. Travelers also explore the Luther Trail and sites made famous by Martin Luther and the Reformation.

On Saturday, Feb. 24, tour with Steves to Dresden, Germany, where visitors experience fanciful Baroque architecture on a delightful

stroll through the cityscape, with some of the best museums in Germany.

Games

After travel, the games begin at 2:30 p.m. and include bridge, Rubik's cube, Scrabble and sometimes poker. Bingo is played on the second and fourth Saturdays of the month, and Pokeno is played on the alternate Saturdays from 2:30-4 p.m.

Trips

GIAC sponsors the following trips, open to all residents and their guests:

- March 22 – Visit Harrington Casino, "Where Winners Play," in Kent County, Delaware. The deadline to sign up is Saturday, Feb. 24.
- May 22 – Partake in "High Tea" at Camellia's Sin Tea

Parlor, as well as soup, salad, sandwiches, scones and side trips to Meadowbrooke Gourds in Carlisle, Pennsylvania, and a stop at Baugher's Farm Market in Westminster, Maryland.

- June 4-8 – Enjoy "Cape Cod and the Islands," an exciting five-day trip to Martha's Vineyard, guided tours of Hyannis and Sandwich, Provincetown and Chatham, a visit to John F. Kennedy Presidential Library and Museum, and the Eastham Windmill. This trip is filling up fast!
- July 24 – Visit Sight and Sound Theater in Pennsylvania to see the musical "Jesus," after a smorgasbord lunch at the Bird-In-Hand Restaurant.

Details about these trips may be found in the Club Trips

section of this publication.

Sign-ups for trips take place during Saturday Afternoon Live (SAL!) from 1:30-3 p.m. in Clubhouse I, when members Joe Parker and Sylvia Pachenker are available to receive payments and answer questions.

The GIAC newsletter, which has more trip information, is also available at that time.

For more information on trips, call Parker at (301-598-3457) or Pachenker at (301-598-5325).

Membership

Those wishing to sign up for membership can do so during SAL! from 1:30-3 p.m. in Clubhouse II, when representatives can provide information and answer questions about the Club and its activities. For more information about membership, call Club president Marion Callaghan at (301-598-6779).

■ Rossmoor Woman's Club

March 26: Springtime Vendor Sale

by Marcia L. Elbrand

Rossmoor Woman's Club's (RWC) sponsors a springtime vendor sale on Monday, March 26, from 10 a.m.-3 p.m. at nearby Bedford Court.

The sale is open to the public, and features gift items range from handy umbrellas and rain bonnets to nicely made costume jewelry, most priced at \$6. Cash, Visa and MasterCard are accepted.

Proceeds from the sale help support the more than a dozen local charities RWC assists. Donations totaling more than \$10,000 each year are sent to local hospices, a domestic violence shelter and, at Leisure World, Fireside Forum and Friends in Sickness and Health (FISH).

RWC provides scholarships to Blake High School seniors and women attending Montgomery Community College. The Club has increased the amount provided for college scholarships in recent years,

said education committee chairperson Rita Posner.

"Of course, we would be very pleased to increase them still further, if we are able to," she said.

The Club also provides tutoring, gift books and bags of nutritious food to families whose children are enrolled in the Head Start program at Harmony Hills Elementary School. RWC volunteers visit the elementary school each month to participate in creative activities with the students.

Individuals wishing to support these worthwhile causes can do so directly by sending donation checks, payable to Rossmoor Woman's Club, to RWC treasurer Pat Lyddane at (15107 Interlachen Dr., Apt. 418, Silver Spring, MD 20906). Indicate for which cause the check is to be earmarked.

Trip to High Tea

On Wednesday, April 25, RWC takes a trip to the Old Farm House in Thom-

asville, Pennsylvania, for High Tea, with a stop at Brown's Orchard and Farm Market. The event is open to both Club members and non-members.

For details and reserva-

tions, call (301-598-1599) or (301-854-6600), extension 4. Board member Maria Festa is travel chairperson.

For more information, see the Club Trips listing of this publication.



FAMILY FOOT & ANKLE ASSOCIATES OF MARYLAND

Dr. Michael Frank

Dr. Marc Goldberg

Dr. Adam Lowy

**3 Convenient Locations
Minutes from Leisure World**

OLNEY

Oland Professional Center
3408 Olandwood Ct. Suite 204
Olney, MD 20832

(301) 924-5044

KENSINGTON

Family Foot & Ankle Associates of Maryland
3930 Knowles Ave Suite 202
Kensington, MD 20895

(301) 942-8110

SILVER SPRING

Colewood Centre
10801 Lockwood Dr. Suite 260
Silver Spring, MD 20901

(301) 439-0300

www.MarylandFeet.com

March 4: Group Gathers to Watch Oscars

by Beth Leanza

Joining the Baby Boomer Club is a good way to get to know other residents.

Club members like to eat and dance to music of the '50s and '60s, as well as watch movies and play board games.

Club members gather together on Sunday, March 4, to watch the Academy Awards ceremony.

The group will also watch a movie together on Friday, March 16, in the Clubhouse II auditorium. Time and movie are yet to be determined.

Then in April, the Club enjoys a potluck dinner and dance. Club members will also see a live production of "Newsies" at Toby's Dinner Theatre in Columbia, Maryland.

Each month, the Sock Hop Club, an offshoot of the Baby Boomer Club, holds a dance. Bring snacks, a small fee to pay the DJ and your own beverage.

Club Membership

Residents who would like

to join the Club should send a \$5 check, payable to Baby Boomer Club, to membership chair Susan Landesberg at (3505 Twin Branches Ct. 37-C).

Be sure to include your email address, as the Club mostly communicates by email; or write "no email" on the check.

Not Getting Emails?

Residents who joined the Club but aren't receiving Club emails are asked to contact Beth Leanza at (301-598-4569) or (bethlea12020@gmail.com). Be sure to add the Club's email address, (bbclw@googlegroups.com), to your address book or contact list.

Friday Hikes with Dawn

Many walkers meet up at the walk site, but if you want to carpool, contact Dawn Carlisle at (301-598-7098) by Thursday evening. Always bring water to each hike.

- Feb. 23 – Sligo Creek Park (Silver Spring) Meet in the

parking lot near the Shalom Grocery store at 1:15 p.m. Bring water. Go south on Georgia Avenue. Turn left onto Arcola Avenue, and continue driving until you reach the Kemp Mill Shopping Center, which is on the right.

Turn right into the shopping center and park near the Shalom Grocery Store at the end of the shopping center. We will walk to the left when we reach the trail.

- March 2 – Lake Needwood (Derwood, Md.) Meet at the hiker/biker trail at 1:15 p.m. Go north on Muncaster Mill Road to Needwood Road. Turn left at the light onto Needwood Road. Continue on Needwood Road to the entrance of the park. Turn left into the entrance of the park and continue for a couple of miles to the parking lot at the hiker/biker trail. Bring water.

Sunday Morning Walks

For a longer walk that begins earlier in the morning, join a group that meets at the corner of Leisure World Boulevard and Arden Court (across from Kelmscot Drive) on Sundays at 8:30 a.m.

The walkers usually go out to breakfast afterward.

Weeknight Walks

Boomers can join walkers who meet Monday through Friday at 5:15 p.m. in the Clubhouse I lobby. They take a one-mile, walk at your own pace trek around the Broadwalk in Montgomery Mutual. Don't wait for an announcement; if you see others waiting, introduce yourself!

Volkssport Walks

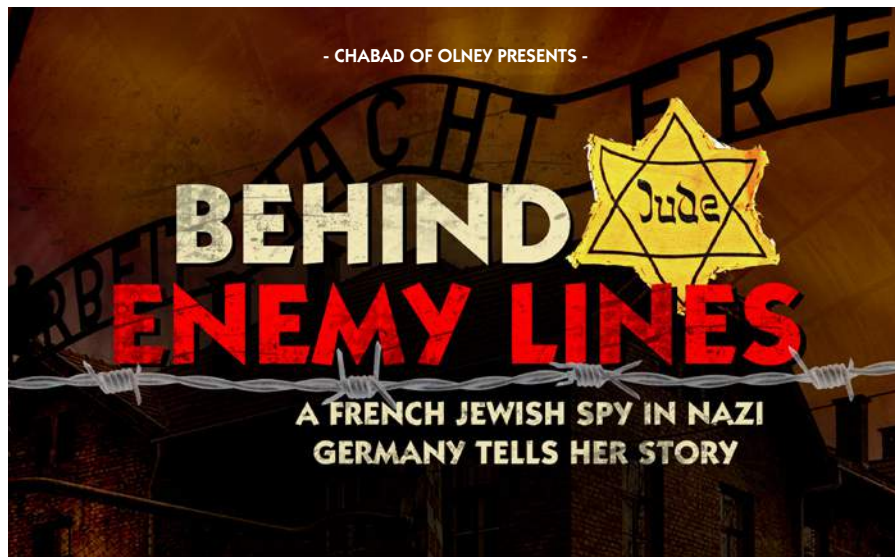
One Baby Boomer Club member is also a member of the American Volkssport Association. He posts their walk information on the Baby Boomer's website, available at (<https://sites.google.com/site/bbclwmd/>). Under Calendar, click on "Walks."

Mah Jongg

Experienced mah jongg players can join a group that meets on Tuesday and Wednesday nights at 7 p.m. in Clubhouse II. Email Donna Copeland at (dc@grandmathegeek.com) for more information.


For more information about Baby Boomer Club, visit (<https://sites.google.com/site/bbclwmd/>), or search for BBCLWMD (Baby Boomer Club Leisure World Maryland).

- CHABAD OF OLNEY PRESENTS -



BEHIND ENEMY LINES

A FRENCH JEWISH SPY IN NAZI GERMANY TELLS HER STORY



PREPARE TO BE INSPIRED BY A TRULY REMARKABLE HERO!

Ninety-seven year old Holocaust survivor Marthe Cohn became a member of the intelligence service of the French First Army and was able to retrieve inside information about Nazi troop movements by slipping behind enemy lines. Hear her incredible story of courage, faith and espionage at this historic event.

There will be an opportunity to purchase Mrs. Cohn's thrilling book following the presentation.

TUESDAY, MARCH 6TH 2018, 7:00 PM

AT THE **OLNEY THEATER CENTER**
2001 OLNEY-SANDY SPRING ROAD, OLNEY

COST: \$10 | STUDENTS: \$5 | VIP SPONSOR: \$360
(SPONSORSHIP INCLUDES PRE-EVENT RECEPTION WITH MARTHE COHN, AUTOGRAPHED COPY OF HER BOOK AND 2 VIP SEATS)

BOOKS WILL BE AVAILABLE FOR PURCHASE AND SIGNING

FOR MORE INFORMATION, PLEASE CALL 301.660.6770 OR VISIT JewishOlney.com/MartheCohn

Foot & Ankle Specialists

of the *Mid-Atlantic*

Now the preferred podiatry practice at MedStar Health at Leisure World

End your toes woes!

Walk pain-free!

Visit Dr. K at MedStar Health at Leisure World, 3305 N. Leisure World Blvd., for treatment of your toes, heels, ankles and feet.

Dr. Freedman & Dr. Kathrotiya-Mago
Leisure World Plaza Professional Building
3801 International Dr. • Suite 204 • Silver Spring, MD 20906
www.footandankle-usa.com

Call today: (301) 598-0130

■ Comedy and Humor Club

Dog Rules Lead to Dog's Rule

by Al Karr

John Lass, the usual leadoff for the weekly meeting of the Comedy and Humor Club, warmed up the group's recent joke fest with a tale telling how animals can dominate their humans' lives. He passed along his home's evolving 10 rules for the dog's behavior:

1. The dog is never allowed in the house.
2. Okay, the dog is allowed, but only in certain rooms.
3. Well, in all rooms; but he has to stay off the furniture. (The dog, that is.)
4. The dog can only get on the old furniture.
5. Okay, on all furniture, but he isn't allowed to sleep with humans in their bed.
6. The dog is allowed on the

bed, but only by invitation.

7. He can sleep on the bed if he wants, but not under the covers.
8. Okay, the dog can sleep under the covers, only if invited.
9. He can sleep under covers every night.
10. Humans must ask permission to sleep under the covers with the dog.

On the last Tuesday of the month, president Sam Hack presents a video of a TV comedy classic, instead of the usual exchange of jokes. On Jan. 30, he and Lass presented "The Best Little Whorehouse in Texas."

Lass was one of the small parade of standup comedy hardies taking the microphone. Others included Regina Lash, Skip Schoening, Rudy Volin,

returning joke telling superstar Fannie Falk and Al Karr. The Club meets every Tuesday from 1:30-3 p.m. in Clubhouse II. Come join the fun.

Here is a sample of the jokes recited:

- Regina – I got a job working in a hay field. After one day, I bailed.
- Rudy performed a delightful rendition of what the old Abbott and Costello "Who's

on First" baseball routine would sound like today if they instead went back and forth about buying a computer. "Word" and "Windows" were particular problems.

- Fannie – Margaret was presented with a slogan: "Woman – without her man, is nothing." But she moved the comma: "Woman – without her, man is nothing."

■ Writers of Leisure World

Inviting a Puppy into the Family

by Carlos Montorfano

At the group's last meeting, Radha Pillai read "Nothing At All," an essay that ponders what heaven is like. Will we have eyes and ears to enjoy the natural world, or something else?

Lee Hardy read "I Light a Candle," a poem dedicated to the memory of her brother, who taught her to write poems for an intended book that never came to be.

Woody Shields' "Arrow of Love" is a narrative about inviting a puppy into the family and accepting that their lives will never be the same.

Douglas Kiessling told the group about his annual four-day trip with fellow banjo players.

After staying at the usual hotel for 47 years, the group was forced to find different accommodations.

Grace Cooper read two of her beautiful poems – very appropriate for this colder season –

entitled, "Shelter from the Storm" and "Winter Love."

Gladys Blank read "America," a delightful narrative about being a member of a book club and having the opportunity to meet new people around the same age as her who share common interests.

York Van Nixon III read "Finger Pangs," a portion from his future book, "Souls Over the Hill." It tells the story of a Korean-American ballet dancer who, after starving herself to stay thin, enjoys a second opportunity to eat what she likes.

Jane Hawes read "A Birthday to Remember," about the time she celebrated her young son's birthday by having a zoo come to her house.

Carlos Montorfano read an old, somewhat humorous verse about cold season.

Meetings are on the first and third Thursday of each month at 11 a.m. in Clubhouse I.

All residents are welcome to attend.



240-441-1999
301-460-4247

Manuela Thoms - Owner
Email: sunshinepjs@gmail.com

Free Estimates
No Job too Big or too Small

Reliable, Trusted,
Professional Services

Thinking About Renovating?
We can do everything for you!

- Painting
- Carpeting
- Flooring
- Carpentry

Moving In or Out?
We can make your home shine!

- Kitchen & baths
- Refinishing
- Carpet cleaning
- Repairs

Licensed and Insured
MHIC# 134458

MILITARY MAN.
LABOR LEADER.
SON & HUSBAND.

★ MARLIN ★
JENKINS
DEMOCRAT FOR DELEGATE
DISTRICT 19



Working for Opportunity for ALL

Mondays with Marlin

You're Invited to a Meet & Greet for Marlin Jenkins,
Democrat for Delegate District 19

Light refreshments will be served.

Marlin is a decorated combat veteran, Member of MCDCC, and labor attorney. He is running to ensure opportunity for all!

When: Monday, February 26, 2018

Location: Clubhouse 1 - 2:00 PM to 3:30 PM

Contact: Suzanne Snurpus (202) 412-9421

www.MarlinForMaryland.com

Paid for by Authority: Friends of Marlin Jenkins, Jessica Clarke, Treasurer

Leisure World Club Trips

The next deadline for trip submissions is **Monday, Feb. 19**. The trips listed below are sponsored by Leisure World groups and organizations and not by Eyre Leisure World Travel. These trips are **open to all residents**, not only members of the specific club. For information, contact the person listed with each trip. (Do not contact the Eyre Leisure World Travel or E&R office.) Leisure World clubs and organizations that want to be included in this column must provide a submission to the News by 3 p.m. on the Monday deadline. Due to space limitations, the Leisure World News reserves the right to edit or delete submissions. **Email** your trip information to lwnews@lwmc.com.

Please Note: Member/Non-Member pricing is at the discretion of the individual clubs.

Feb. 28 "The Great Society" at Arena Stage

LWAAAC is sponsoring a trip to the Arena Stage in Washington, D.C., to see the play, "The Great Society," at a noon matinee performance. The play deals with President Lyndon Baines "LBJ" Johnson's efforts to maintain his relationship with Dr. Martin Luther King Jr., keep political opponents at bay and complete his social policy projects.

Tickets are \$60 and include Eyre bus transportation. Tickets may be purchased by placing a check, payable to LWAAAC, in the LWAAAC mail slot in the Clubhouse I E&R office. All residents are welcome. For more information, call Juanita Sealy-Williams at (301-822-4531).

Mar. 6 NEW – Dennis and Phillip Ratner Museum

Hadassah invites you to join our visit to the Dennis and Phillip Ratner Museum on Tuesday, March 6, at 10:30 a.m. The museum is located at 10001 Old Georgetown Road, Bethesda, Maryland, at the corner of Old Georgetown Road and Lone Oak Drive.

The donation to Hadassah is only \$5 and can be paid at the museum. During the visit, you will meet artist Phillip Ratner and become acquainted with the permanent collection of Phillip Ratner's art including sculpting, drawing, painting and graphics plus the works of established and emerging artists.

Off-street parking is available at the museum. Carpooling is encouraged. The building is fully accessible. RSVP by Tuesday, Feb. 27, to Judy Rumerman at (judyrumerman@gmail.com) or (301-680-0850) to join the tour.

There are many restaurants nearby, if you would like to have lunch after your visit.

Mar. 22 Harrington Casino in Delaware

Come with the **Going It Alone Club** on a trip to Harrington Casino. At the discretion of the casino, receive \$15 in slot play and a \$7 buffet credit.

The cost is \$25 for Club members and \$32 for non-members.

Sign up at Saturday Afternoon Live (SAL) from 1:30-3 p.m. in Clubhouse II. If you have a casino card number, bring it with you at sign up.

No refunds will be made after Saturday, Feb. 24, unless a replacement is made. For more information, call Joe Parker at (301-598-3457) or Sylvia Pachenker at (301-598-5325).

April 8-15 Bermuda Cruise

Join **NA'AMAT** on a seven-night cruise to Bermuda on the Carnival Pride, leaving from Baltimore.

Cabin prices are: balcony \$1,897 per person, double occupancy; outside \$1,562 per person, double occupancy; inside \$1,472 per person, double occupancy. Pricing includes transportation to/from pier, insurance, gratuities, cruise fare, taxes and fees. Passport required.

Call Jill, Eyre Leisure World Travel, to reserve your cabin, at (301-598-1599) or (301-854-6600 x 3225). Questions? Call Trudy Stone at (301-438-0016).

April 25 "Two Trains Running" at Arena Stage

Join LWAAAC at a noon performance of the play, "Two Trains Running," on Wednesday, April 18, at Arena Stage in Washington, D.C.

From playwright August Wilson comes this masterpiece drama about everyday lives in Pittsburgh, Pennsylvania, during the Civil Rights Movement.

Tickets, \$65 per person, include transportation, and must be purchased by Saturday, March 10. Place a check, payable to LWAAAC, in the LWAAAC mail slot in the Clubhouse I E&R office. Email addresses should accompany checks. For additional information, call Juanita Sealy-Williams at (301-822-4531).

April 25 High Tea at the Old Farm House

Join members of the **Rossmoor Woman's Club** on an excursion to Thomasville, Pennsylvania, to have High Tea at the Old Farm House. Built in 1863, the Old Farm House features antiques and collectibles. On the way back to Leisure World, the group stops at Brown's Orchard and Farm Market for a bit of shopping.

The cost is \$78 per person and reservations can be made by calling Eyre at (301-598-1599) or (301-854-6600, ext. 4) or by stopping by the Eyre office in Clubhouse I.

May 22 Camellia's Sin Tea Parlor and Meadowbrooke Gourds

Join the **Going It Alone Club** for High Tea in Carlisle, Pennsylvania. The tea includes salad, scones, petite sandwiches, desserts and seasonal teas. Then it's off to Meadowbrooke Gourds for a demonstration of crafting gourds into works of art. On the way home, we stop at Baugher's Farm Market in Westminster, Maryland, for a little shopping.

The cost is \$68 for Club members and \$75 for non-members. The bus leaves I at 10 a.m. and returns at approximately 8 p.m.

Sign up at Saturday Afternoon Live (SAL) in I from 1:30-3 p.m. No refunds will be made after Saturday, April 21, unless a replacement is made. For more information, call Joe Parker at (301-598-3457) or Sylvia Pachenker at (301-598-5325).

June 4-8 Cape Cod & the Islands, Massachusetts

Join the **Going It Alone Club** for an excursion that includes Cape Cod, Martha's Vineyard, plus guided tours of Hyannis, Sandwich, Provincetown and Chatham, along with visits to the JFK Museum, the Sandwich Glass Museum and the Eastham Windmill.

The cost is \$460 for Club members and \$467 for non-members, double occupancy (\$135 additional for single occupancy). A \$200 reservation deposit is due at sign up with the balance due by Saturday, March 31. Trip cancellation insurance is available at sign up.

Sign up at Saturday Afternoon Live (SAL) from 1:30-3 p.m. in I. For more information, call Joe Parker at (301-598-3457) or Sylvia Pachenker at (301-598-5325).

Attention, Travelers!

All Leisure World travelers please note that no group on travel can park more than 12 vehicles overnight/long-term in the Clubhouse II parking lot. Also, parking overnight/long-term is at the owner's own risk.

Clubs, Groups & Organizations In Brief

Amateur Radio Club: Calling all hams! All resident amateur radio operators (hams)—or would-be operators—are invited to join our business meeting/lunch the second Tuesday of each month. We meet in the Stein Room in Clubhouse I at 1 p.m. For more information or to learn about amateur radio, call Bryan West at (301-598-0137).

Book Club Network: The network is a collection of book discussion groups of eight to 12 members each, providing a forum for residents to get together with other avid readers to read and discuss their favorite books. Members meet monthly to talk about a specific work chosen by their club. For further information, contact Verna Denny at (301-598-1418) or (verhd@msn.com).

Clipper Workshop: Recruiting is underway for members who can help assemble clown hand puppets for Holy Cross Hospital. They are used in the pediatric and emergency rooms. No special skills are needed. Some sewing skills are necessary. We need a sewing machine stitcher. Bring a bag lunch; we eat in the cafe. We meet every first and third Monday in Clubhouse II from 10 a.m.-2 p.m., or any portion of the time you can devote to making a child smile. We need donations of cotton fabrics, stuffing, thread and iron-on facing. Contact Joan Mahoney at (240-833-2724) or Jane Brinser at (301-438-2599) for further information.

Computer Learning Center: Located in Clubhouse II just down the hall from the E&R office, the Computer Learning Center is operated by The Leisure World Computer Center Inc., a 501(c)(3) non-profit organization. The all-volunteer staff comprises a board of directors, computer room monitors and other volunteers. The center provides residents free training and assistance in the day-to-day use of computers for online research and other personal needs. The center has Mac and Window systems computers as well as color laser printers for printing and scanning. For more information about the Computer Learning Center, please visit (www.computerctr.org) or contact the E&R office in Clubhouse II at (301-598-1320).

Hispanos de Leisure World: We invite all residents who are Hispano-Parlantes to join us in enjoying the activities of this club, including card games and conversations, every Friday at 3 p.m. in Clubhouse I. Once a month, Latin-American and Hispanic movies, with English subtitles, are screened at the same location and same time, 3 p.m. Also, the club organizes a Fiesta de La Amistad on a weekend in the spring and a Christmas dinner in December. And we have organized and presented musical shows about once a year in the Clubhouse II auditorium as well. If interested, contact Maria Blanco, club president, at (301-847-9066) or Carlota "Loty" Goldenberg at (301-598-6869).

Knitting Corner: Join us the second and fourth Fridays of each month at The Inter-Faith Chapel from 10 a.m.-noon. Our next meeting is Feb. 23. Bring your knitting and enjoy the conversations. We have patterns and yarn for the Chapel's mission. Yarn donations gratefully accepted. Call Joan at (240-833-2724) if you have any questions.

LW Discussion Group: The group meets the third Wednesday of each month at 1:30 p.m. in Clubhouse II. Various members lead discussions on hot topics and current events. On Feb. 21, Barbara Hudson facilitates on two recent hot topics: sexual harassment in the workplace, and responses to removing flags, insignias and monuments. For more information on this enlightening and, at times, provocative group, please contact Phil Wendkos at (301-598-0109) or (pwendkos@gmail.com).

Musical Jammers: We gather informally once a month with other amateur musicians, singers and lovers of music to sing, play music and have fun – no dues, no meetings, no

agendas, no committees. We meet on the second Monday of every month at 10 a.m. in Clubhouse II. All instruments and voices are welcome. You bring it; we'll sing it. Questions? Call Richard Lederman at (301-598-1132).

Nextdoor.com: A friendly place online to share tips and meet neighbors. We already have a record of success helping make Leisure World even better. Free. Please join our 780 members. Go to (www.nextdoor.com/join) and enter the code QHMXCF.

The Philadelphians: We meet on the first Sunday of the month at 11 a.m. in Clubhouse II by the fireplace. If you were born, raised, went to school or lived in Philly, you are welcome to join us.

The Pittsburgers: If you were born, raised or lived in Pittsburgh and/or the Greater Pittsburgh area, you are welcome to join us. For more information, call Tania Iwanowski at (301-598-2278) or email (Tania.Iwanowski@yahoo.com).

Quilt Group: Come and join our fun group as we work on our individual projects. We now include those interested in all needlework and knitting. We meet the second and fourth Thursdays in the Clubhouse II multipurpose room at 9:30 a.m. If you have any questions, call Clydis Kellough at (301-642-2430). Our next meeting is Feb. 22.

Stitchers Group: Needlepoint, cross-stitch and more. If you enjoy stitching or would like to learn, we meet every first and third Thursday from 10 a.m.-noon in the Clubhouse II multipurpose room. Come and share your finished work and enjoy stitching with us while we learn new skills together. Call Audrey at (301-598-4903).

Short Story Group: The Group reads from a collection of short stories and discusses them together. We are currently reading from "The Oxford Book of American Short Stories," 2nd edition, editor Joyce Carol Oates. On Wednesday, Feb. 21, Mary Ann Chinni will lead a discussion of "Under the Radar" by Richard Ford. On Wednesday, March 7, Roy Saltman will lead a discussion of "Hunters in the Snow" by Tobias Wolff. The Short Story Group meets at 11 a.m. on the first and third Wednesdays of the month in Clubhouse I. For information, call Beth Leanza at (301-598-4569).

Stamp and Coin Club: Are you a philatelist or a numismatic? Join the Stamp and Coin Club. We meet on the first Thursday of each month at 3 p.m. in Clubhouse I. Members discuss their collections, including first day covers, day of issue programs, yearbooks, coins, medals and more. Stamps are shared for "show-and-tell," and we hold an auction of members' stamps. In addition, a gift certificate from Coins of the Realm in Rockville is awarded as a door prize at each meeting. All residents and non-residents are welcome to attend. Annual dues are \$5. If interested, contact Rita Mastorocco at (301-814-9196).

Wood Shop Users Group: The wood shop is located on the lower level of Clubhouse I; the entrance to the shop is off Gleneagles Drive. It is open Monday through Friday, 9 a.m.-3 p.m. and Saturday 9 a.m.-noon. An experienced monitor is on duty when the shop is open to assist members with their work and provide instructions in the use of shop equipment. Members are often willing to repair and refinish projects for Leisure World residents. For further information, call (301-598-1308).

Women in the Military: Are you a female who has served in the armed forces? Join us as we shine a light on the role that women play in serving our country. We also strive to promote awareness of the Women's Memorial at Arlington National Cemetery. We meet every second Wednesday of the month at 10 a.m. in the Terrace Room. Call Barbara Long at (301-438-3427) for more information.

SPORTS, GAMES & Scoreboards

Chess Club

Avoiding the Sting of Defeat

by Bernie Ascher

Bees know how to fly, but defy the laws of gravity and aeronautics. By studying bee flight in slow motion, scientists think they know how it is done.

Bees are able to lift their own weight off the ground by flapping their little wings many, many times and quickly (about 11,400 times per minute).

Their flight does not depend on what they eat. During the summer, bees eat the nectar of flowers and fertilize them at the same time. They make honey and store it for the winter when few flowers are available for food.

Honey made by honeybees can be stored indefinitely without going bad. It is okay for humans to take some of the honey as long as it is plentiful. Presumably, beekeepers know how much to take without harming the bees.

Bumblebees are different than honeybees

and do not make the same kind of honey, the honey used by humans. Bumblebee honey is stored as nectar for only a short time because their colonies do not last as long as honeybee colonies.

Bumblebees live in nests with 50-400 bees; honeybees live in hives with up to 50,000-60,000 bees. Honeybees have to feed a colony of workers plus the queen throughout the winter; bumblebees feed only the queen, who survives while the rest of the colony dies in the winter.

Honeybees are distinguished from bumblebees by their many stripes with several gray ones at the tip of the abdomen. Bumblebees are broader and furry with blocks of color rather than a series of stripes. Bees themselves know the difference

immediately.

Female honeybees and bumblebees both sting, but honeybee stingers are barbed and bumblebee stingers are not. Thus, when honeybees sting, they lose their stingers and die; whereas bumblebees retain their stingers and may sting several times. Male bees do not have stingers.

Carpenter bees are often mistaken for bumblebees. They are a separate species approximately the same size as the bumblebee, but with less hair on their abdomen

and no yellow markings.

They are considered a threat to human dwellings because they drill holes into wood decks and overhangs to leave their eggs. These holes cause weaknesses in the structure. Female carpenter bees are not aggressive, but they will sting if they feel their nests are threatened.

Giant honeybees are found in Nepal in Himalayan mountain overhangs hundreds of feet above the ground. Their bodies are nearly an inch long, compared to most other bees, which are roughly two-thirds of an inch. Honey hunters climb rope ladders to saw off crescent-shaped hives with thousands of giant bees.

The bees produce a sticky, reddish fluid known as mad honey, which is said to have hallucinogenic properties. Mad honey sells for \$60-\$80 dollars a pound on Asia's black markets, roughly six times the price of regular Nepali honey, according to National Geographic.

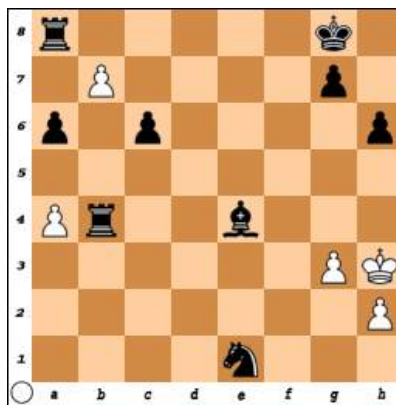
For centuries this honey has been used as a cough syrup, as an antiseptic, and sometimes as a sexual stimulant.

Chess players at Leisure World do not want to be stung by their opponent's moves on the chessboard. In the game pictured on this page, White has just stung Black by capturing the Pawn at b7, threatening to capture the Rook at a8 and become a Queen. What is Black's best move?

The answer follows the usual reminder that the Chess Club meets Monday, Wednesday and Friday from 1-4 p.m. in Clubhouse II. Membership is free. For further information, call Club President Bernie Ascher at (301-598-8577).

ANSWER: Black moves the Bishop to g2. Checkmate!

So, do not wait for scientific proof that bees can fly. Do not wait for hallucinogenic honey. Do not wait for the extinction of carpenter bees. Play chess now!



KIA

PRESIDENTS' DAY

★★★ SALES EVENT ★★★

0 | PLUS | **0%**
PAYMENTS | APR
FOR 3 MONTHS | FOR UP TO
75 MONTHS

 2018 Sorento

 2018 Optima

2 Years/24,000 Miles Complimentary Maintenance with every new Kia, only at Herson's Kia!

HERSON'S KIA 301-340-3100 **KIA**
www.HersonsKia.com
15531 Frederick Road | Rockville, MD 20855

■ Tuesday and Friday Duplicate Bridge

Compiled by Jerry Miller

For Tuesday games, Flight A includes all players. Flight B includes only ACBL member pairs, each with less than 1,000 master points.

Friday, Jan. 19, 2018

No Flight B

North-South

1. Aaron Navarro – Deborah Cobb
2. Arthur Podolsky – Lewis Gold
3. Stephan Billstein – James Cowie
4. Leonard Taylor – Lillian Taylor

East-West

1. Lorraine Hegel – Saul Penn
2. Sym Gallucci – Pradeep Kapur
3. Sharon Strong – Beth Harper
4. Betti Goodman – Howard Brewer

Tuesday, Jan. 23, 2018

North-South

Flight A

1. Diane Keiper – Nadyne Cheary
2. Jerry Miller – Gerald Lerner
3. Wendy Morrison – Saul Penn
4. Ann Ruth Volin – Stephan Billstein

East-West

Flight A

1. Patti Anschutz – Mary Lafferty
2. Jim Anschutz – Robert Kerr
3. Nancy Gordon – Mildred Lieder
4. Marcia Fletcher – Michael Benefiel

Flight B

1. Wendy Morrison – Saul Penn
2. Ann Ruth Volin – Stephan Billstein

Flight B

3. Marcia Fletcher – Michael Benefiel

Friday, Jan. 26, 2018

North-South

1. Arthur Podolsky – Lewis Gold
2. Diane Keiper – Nadyne Cheary
3. Leonard Taylor – Lillian Taylor
4. Mary Lafferty – Walter Lafferty

East-West

1. Deborah Cobb – Aaron Navarro
2. Beth Harper – Sharon Strong
3. Susan Weiss – Sue Swift
4. Joe Boland – Howard Brewer

Flight B

1. Carole Ruth Cougnet – Ted Michos

Flight B

1. Beth Harper – Sharon Strong
2. Susan Weiss – Sue Swift

Tuesday, Jan. 30, 2018

North-South

Flight A

1. Robert Catlett – Hanna Schepps
2. Wendy Morrison – Saul Penn
3. Lorraine Hegel – Robert Kerr
4. Ann Ruth Volin – Stephan Billstein

East-West

Flight A

1. Marcia Fletcher – Rae Newman
2. Dora Levin – Elly Gotkin
3. Nancy Gordon – Sue Swift
4. Susan Weiss – Bernice Felix

Flight B

1. Alan Ferraro – Liz Ferraro

Flight B

2. Susan Weiss – Bernice Felix

Friday, Feb. 2, 2018

North-South

Flight A

1. Diane Keiper – Nadyne Cheary
2. Doris Perschau – Thomas Leahy
3. Steve Billstein – Jim Cowie

East-West

Flight A

1. Beth Harper – Sharon Strong
2. Bernice Felix – JoAnn Quinn
3. Howard Brewer – Joe Boland

Flight B

1. Steve Billstein – Jim Cowie

Flight B

1. Bernice Felix – JoAnn Quinn
2. Susan Weiss – Nancy Gordon

■ Wednesday Night Chicago Bridge

Compiled by Abigail Murton

Jan. 24, 2018

1. Joan Thomas and Joyce Fischer, 4,460
2. Ann and Joe Boland, 4,050
3. Barbara Bryant, 3,600
4. Pat Villareale and Sue Unger, 3,510

Jan. 31, 2018

1. Abigail Murton and Doug Brasse, 6,140
2. Betti Goodman and Helen Montanaro, 4,090
3. Joan Thomas and Joyce Fischer, 3,630
4. Betty Hollrah and Pat Villareale, 3,410

■ Thursday Afternoon Ladies Bridge

Compiled by Jackie Harrell

Jan. 25, 2018

1. Pat Patton, 3,460
2. Jo Vicenzi, 3,380
3. Sally Pride, 3,080

Feb. 1, 2018

1. Helen Montanaro, 2,940
2. LeAnna Gipson, 2,880
3. Dolores Shapiro, 2,870

■ Friday Bridge

Compiled by Betti Goodman

Jan. 19, 2018

1. Ray Kurlander, 3,900
2. Mort Faber, 3,010
3. Joyce Fischer, 2,890
4. Irwin Bauman, 2,860

Feb. 2, 2018

1. Gloria Kitzler, 2,940
2. Joyce Fischer, 2,890
3. Helene Kurtzman, 2,780
4. Mark Levin, 2,770

Jan. 26, 2018

No game.

■ Newcomers Duplicate Bridge

Feb. 19: Next Session

The next Newcomers Duplicate Bridge session is on Monday, Feb. 19, at 6:45 p.m. in Clubhouse I. Recent attendance has been insufficient to warrant continuing this game, so please come to this session. Arriving with a partner is preferred, but singles are matched up. Contact Aaron Navarro at (abn123@netzero.net) for questions and to RSVP.

– Jerry Miller

LEISURE WORLD®

55+ "Resort" Community

18 Hole Golf Course

Resident \$ 800 Annual Dues (No Green Fees)

Non-Resident \$ 900 Annual Dues (No Green Fees)

"Country Club Feel"



2017 To-Date - Oct 10th

Sold: 18

Ratified: 2

Listings: 14

Please put my Winning Strategies to work for you and your Friends, Neighbors or Relatives

Your Referrals are greatly Appreciated



Douglas Brasse

Cell: (301) 448-8708

dbrasse@weichert.com

Aspen Hill/ Leisure World Plaza

3816 International Drive

Silver Spring, MD 20906

Office Fax: (301) 598-9325

MAIN OFFICE: (301) 681-0550

Office Fax: (301) 598-9325

MAIN OFFICE: (301) 681-0550

dougbrasse.com



Authorized Leisure World® Specialist

Leisure World® is a registered trademark owned by RRLH, Inc.

Doug Brasse is authorized by RRLH, Inc. under license to use the Leisure World® service trademark

GOLF MEMBERSHIP RENEWALS

Members of the Golf Course are reminded to stop by the Pro Shop to renew their membership for the 2018 season.

Non-member residents can still play on Leisure World's 18-hole regulation golf course or practice their swing on the range

behind the Pro Shop.

Daily greens fees for nine and 18 holes are \$15 and \$22, respectively, for residents; guest fees are \$18 and \$25. Daily range fees are \$5 for a small bucket of balls, and \$7 for a large bucket.

Winners Ascend to Second Place

by Rita Mastrococco

The following bad weather rule is in effect for winter: If Montgomery County Public Schools are either closed or on a two-hour delay based on snow or icy conditions, the league does not bowl.

The league is based on handicaps with averages for the bowlers ranging from 88 to 176. If you have not bowled in years, come out and join the fun.

The top league standings as of Feb. 5 are: Half and Half in first place; Winners in second place; and Just One More in third place.

Top scores for the week of Jan. 26 are:

Scratch Game – Wild Things, 724 pins
Scratch Series – Wild Things, 2,069 pins
Handicap Game – Wild Things, 952 pins

Handicap Series – Wild Things, 2,753 pins
High Average Men – Steve Hays, 177 pins
Scratch Game Men – Steve Hays, 233 pins
Scratch Series Men – Steve Hays, 637 pins
Handicap Game Men – Steve Hays, 264 pins
Handicap Series Men – Steve Hays, 760 pins
High Average Women – Chris Porter, 163 pins
Scratch Game Women – Jessica Stephens, 198 pins
Scratch Series Women – Jessica Stephens, 515 pins
Handicap Game Women – Rita Mastrococco, 254 pins
Handicap Series Women – Rita Mastrococco, 682 pins

Top scores for the week of Feb. 2 are:

Scratch Game – Hooks N Curves, 622 pins
Scratch Series – Wild Things, 1,791 pins
Handicap Game – Ptero-

saurus, 916 pins
Handicap Series – Pterosaurs, 2,581 pins
High Average Men – Steve Hays, 176 pins
Scratch Game Men – Richard Bambach, 207 pins
Scratch Series Men – Steve Hays, 509 pins
Handicap Game Men – Richard Bambach, 288 pins
Handicap Series Men – Bruce MacDonald, 689 pins
High Average Women – Chris Porter, 162 pins
Scratch Game Women – Ruth Sentelle, 157 pins
Scratch Series Women – Ruth Sentelle, 443 pins
Handicap Game Women – Beth Leanza, 230 pins
Handicap Series Women – Beth Leanza, 644 pins

You do not need to be a good bowler to join. Come and join us for fellowship, fun and easy exercise. There is no long-term commitment.

The league bowls every Friday morning with practice starting at 9:20 a.m. at Bowl America, 1101 Clopper Rd., in Gaithersburg.

The cost for the three games of bowling, the use of bowling shoes and balls, and unlimited cups of coffee is only \$10.

If interested, please call Rita at (301-814-9196).



Sports, Games & Scoreboards In Brief

Bid Whist: Do you know what Sport the Kitty, Boston Time and Rise and Fly all mean? If you like to play Bid Whist, then meet us on Mondays at 6 p.m. in the Clubhouse II Pantry Room. Questions: Call Jessie at (314-374-4501).

Bridge:

- **Tuesday and Friday Duplicate Bridge** games are at 7 p.m. in Clubhouse I. New players with partners are welcome. Have fun. Win masterpoints. Questions? Call Nadyne at (301-598-5677).
- The **Wednesday Night Chicago Bridge Group** is looking for new members. The group meets every Wednesday in Clubhouse I. Play begins promptly at 6:45 p.m. Bring a partner and be ready for a few hours of friendly games. Questions? Call Doug at (301-448-8708).

- **Men's Bridge** seeks players. We meet Mondays and Thursdays at 12:30 p.m. in Clubhouse II. No partner needed. Please, no beginners.

- **Thursday Ladies Bridge** welcomes more card players. If interested, call Jackie Harrell at (301-598-4341).

Cribbage: We meet for 150 minutes of competitive fellowship Thursdays at 9:30 a.m. in Clubhouse II. We have cards and cribbage boards, and would be pleased to teach you the game. It is a mixture of rummy and pinochle and is pure fun. (We do not even keep score.) For more information, call George at (301-598-9747) or Bill at (301-598-7270). We look forward to seeing you.

Duckpin Bowling: Join us for the Duckpin Mixed Bowling League Mondays at 12:30 p.m. at White Oak Bowling Lanes (11207 New Hampshire Ave., Silver Spring). We need bowlers of all skill levels and will welcome you into our enthusiastic group. We carpool regularly, so non-drivers need not stay away. Call Grace White at (301-438-7892) or Flora Wolf at (301-598-5807) to join as a substitute or regular bowler.

Jigsaw Puzzle: There is a jigsaw puzzle table in the Clubhouse II lobby. Feel free to work on it at your leisure.

Mah Jong: Learn how to play Mah Jong. Call (301-598-3438).

Ping Pong: Get healthy exercise and camaraderie playing ping pong. The club meets every Wednesday and Friday, from 1-3 p.m., in Clubhouse II multi-purpose room. Drop in anytime during that period. Some experience preferred. If interested, call Julie Friedman at (301-598-5424).

Pinochle Players: Experienced Pinochle players wanted. We play Mondays at 6:30-8:30 p.m. in Clubhouse II. If interested, call (301-775-7238) or (301-598-7064). If you are interested in learning how to play, you are welcome to observe.

Poker:

- A few poker game openings are available at the Greens, Thursdays 7-10 p.m. No prior experience necessary. If interested, call Marcel at (240-486-6205).

- **Men's Poker** is seeking new members. Play is daily, beginning around 9 a.m. in the Game Room in Clubhouse II.

- **Poker** – play Monday and Thursday, 1 p.m.-4:30 p.m., Clubhouse II Game Room. We play hi/low only (two winners). Call (301-598-4331) or (301-434-6823) or come observe.

Scrabble: Please join us at Clubhouse II on Tuesdays at 12:30 p.m. for a game of Scrabble. Boards are available. Call Arlyne at (301-438-7442) if you are interested in playing.

Indoor Pool Volleyball: Experienced players are welcome to join a competitive game in the social pool at Clubhouse II on Mondays and Thursdays at 6 p.m. Basic volleyball skills are required. For beginners, social games are Wednesdays, Fridays and Saturdays at 3 p.m. If you don't have a yearly indoor pool pass, a \$3 ticket good for one pool session may be purchased at the Clubhouse II E&R office. Email Laurie Burdick at (lgburdick@aol.com) with questions.

EYRE Leisure World Travel

Travel & Tour Department • (301) 598-1599 • Tuesday, Wednesday & Thursday 8:30 am-2 pm
Reservations can be made Monday through Friday, 8:30 am-5 pm by calling 301-854-6600 #4
For more detailed itineraries, please see the Eyre Representative at the Eyre Leisure World Travel Office.

DAY TRIPS

Hollywood Casino, WV

Mon., 2/19, 10:00 am-5:45 pm \$38.00 per person
\$15.00 slot play from casino and transportation only.

Philadelphia Flower Show

Thur., 3/8 or Fri., 3/9
7:45 am-7:45 pm \$86.00 per person
This years theme is Waterworks! Lunch on own.

9/11 Memorial & Museum, New York

Sat., 3/17, 7:00 am-11:45 pm 120.00 per person
One World Observatory* 139.00 per person
Includes a \$10 Gift Card to Cracker Barrel. *Optional add-on to your day -
Travel up to One World Observatory for an additional \$19.00 per person.

Orchid Exhibit at Hillwood

Tues., 3/20, 10:15 am-4:45 pm \$90.00 per person
Marjorie Merriweather Post had the greenhouse constructed to house her extensive collection of orchids. Enjoy a tour of the greenhouse and learn about its history. Lunch at the café.

National Museum of Jewish History, PA "Leonard Bernstein: The Power of Music"

Wed., 3/21, 7:45 am-6:40 pm \$105.00 per person
Admission covers two exhibits: the core exhibit (docent lead) and "Leonard Bernstein: The Power of Music," celebrating the centennial birthday of one of the 20th century's most influential cultural figures. Boxed lunch provided.

Hagerstown Outlets

Thurs., 3/22, 9:00 am-4:15 pm \$35.00 per person
Shop 'til you drop! Transportation only.

"The Hunchback of Notre Dame," Riverside Center for the Performing Arts, Fredericksburg, VA

Wed., 3/28, 9:45 am-6:45 pm \$117.00 per person
As the bells of Notre Dame resound through the famed cathedral in 15th-century Paris, Quasimodo, the deformed bell-ringer who longs to be "Out There" observes all of Paris reveling in the Feast of Fools. Lunch included.

Cherry Blossom Tour, DC

Mon., 4/2, 10:00 am-3:15 pm \$79.00 per person
Driving tour of DC with stops at WWII Memorial, FDR Memorial and Martin Luther King Jr. Memorial. Lunch at Carmine's included.

Odyssey Cherry Blossom Luncheon Cruise, DC

Tues., 4/3, 9:00 am-3:45 pm \$105.00 per person
Step aboard the "Odyssey" and experience the luxury only a true cruising vessel can provide. Enjoy a fine lunch with live entertainment and see our nation's greatest monuments as they drift past your table.

Boston Pops Orchestra at Strathmore, MD

Sun., 4/8, 1:00 pm-5:15 pm \$148.00 per person
It's a Jazz Age jubilee with conductor Keith Lockhart and the Boston Pops. Ticket to show and motorcoach transportation included.

Murder Mystery Theater

Tues., 4/10, 7:15 am-5:45 pm \$117.00 per person
Take part in an interactive, who-done-it at Mount Hope Mansion in Manheim, PA. Enjoy a sumptuous four course meal, become a detective – interrogate the suspects, put the clues together and uncover the truth!

Barn Quilts, Antrim 1844 & Baughers, MD

Wed., 4/18, 7:45 am-5:00 pm \$104.00 per person
The Carroll County Barn Quilt Trail is a program that pays homage to the county's agrarian history by installing 8-foot square quilt blocks on scenic barns throughout the county. Lunch is included and will be at the infamous Antrim 1844 in Taneytown. After lunch, a stop will be made at Baugher's Restaurant that features country cooking and fresh baked goods for purchase.

Backroads to Freedom-Harriet Tubman, MD

Sat., 4/21, 8:15 am-7:30 pm \$115.00 per person
A step-on Guide will join us for the day to take you through the new Harriet Tubman Underground Railroad State Park; travel through the Blackwater National Wildlife Refuge; hear stories of the Network to Freedom Highway and end the day with a plated lunch at Suicide Bridge Restaurant.

Old Farm House Tea & Brown's Orchard, Thomasville, PA

Wed., 4/25, 9:00 am-5:00 pm \$78.00 per person
Join Rossmoor Women's Club for a delicious High Tea at the Old Farm House and before ending your day we will make a stop at Brown's Orchard & Farm Market. Trip includes: Motorcoach transportation and High Tea.

Wolf Sanctuary, PA

Thurs., 4/26, 7:15 am-5:45 pm \$99.00 per person
Travel from pack to pack with your guide. Lunch at Shady Maple.

"Grease" the Musical at Dutch Apple Theatre, PA

Wed., 5/16, 9:00 am-6:00 pm \$112.00
Dust off your leather jackets, pull on your bobby-socks and take a trip to a simpler time! Transportation, show and lunch included.

Spotlight On...

Celebrate Black History Month at the National Museum African American History & Culture, DC

Mon., 2/19, 9:00 am-3:15 pm \$45.00 per person
Admission and transportation included in trip.

MULTI-DAY TRIPS

Myrtle Beach & Charleston, SC
March 18-22

Best of Israel & Jordan
March 21, Oct. 3 or Nov. 7
12 days (fly/drive)

St. Augustine, Amelia Island & Jacksonville, FL
April 8-14

Chihuly at the Biltmore, NC & The Smoky Mountains, TN
May 20-24

A Trolley, A Train & Patsy Cline's Winchester
May 23-25

All the Presidents Homes, VA
June 3-5

Cape Cod, MA
July 22-26

Nova Scotia & Canada's Maritimes
Aug. 10-18

A Taste of Tuscany
Sept. 2-9

The Ark Encounter
Sept. 4-7

Mystical Peru
Sept. 11-17

CRUISES

Carnival Pride Bermuda Cruise
April 8-15

Princess Cruise Alaska on the Golden Princess (land/cruise)
Aug. 14-25

We can book any cruise line anywhere you want to cruise.

Princess Cruise Alaska on the Golden Princess (cruise only)
Aug. 18-25

Royal Caribbean Canada & New England
Sept. 27- Oct. 6

(All Trips depart from Clubhouse II)

Some trips require a certain amount of walking. The shoe symbol  provides an indication of how much walking may be involved.

Key:  Easy Walking   More Walking    A Lot of Walking

Eyre at Leisure World Travel Office, located in Clubhouse I, is a department of Eyre Bus, Tour & Travel. We offer a full service travel agency that specializes in airline reservations, cruises, group tours, vacation packages, hotel accommodations and auto rental. We have been providing "Excellence in Travel for 70 Years".

INCLEMENT WEATHER POLICY: Please call 301-598-1599 after 7 am on the day of a trip to find out if we have cancelled, postponed or are going. If a trip is cancelled, you will also receive a phone call from us once the office is open.

CLASSES & Seminars

Sign-up will be taken for newly advertised classes beginning on the Tuesday after the date of the edition of Leisure World News in which it appears. All sign ups begin at 8:30 a.m. in either or I as noted in the class description. Residents can register for themselves and two other residents. **Please bring your Leisure World ID.**

If required enrollment is not met five days prior to the start date, the class will be cancelled.

*****Please note fees for non-residents: add \$10 for 1-6 session classes and \$20 for classes of 7 or more sessions.**

Payment can be made by check or credit card (MasterCard, VISA or Discover); no cash is accepted. Checks *must* be made payable to Leisure World of Maryland Corp. Please sign up in advance of the starting date of the class since instructors need to know how many will participate. **Note: Registration will not be accepted nor refunds issued after the completion of two sessions!**

Leisure World does not discriminate on the basis of race, color, national or ethnic origin in admission policies, education policies or programs.

Community Classes Policy for Inclement Weather

If Montgomery County Public Schools are closed, all classes will automatically be cancelled. If school openings are delayed, classes will be held at the discretion of the instructor.



EDUCATION

NEW – The “Emoluments Clause” – What is it? Find out what relevance this little-known clause in the U.S. Constitution holds today.

“One of the weak sides of republics, among their numerous advantages is that they afford too easy an inlet to foreign corruption.” The Federalist No. 22, Alexander Hamilton, 1787.

Fee includes pocket-sized edition of the U.S. Constitution. For more information, contact Betty Smith, BS, MLS at (301-598-4245).

This two-session class meets Wednesdays, March 21 and 28, 6-8 p.m. **Fee: \$15. Register at Clubhouse I.**

Great Decisions in Foreign Policy, a CLL course: This course, led by David Frager, is the 2018 version of the Foreign Policy Association’s (FPA) Great Decisions series. Participants will discuss the waning of Pax Americana, Russia’s foreign policy, China and America: the new geopolitical equation, media and foreign policy, Turkey: a partner, U.S. global

engagement and the military, South Africa’s fragile democracy and global health: progress and challenge.

A text prepared by the FPA is included in the price of the course and is the basis for course discussions.

The class meets on Thursdays, Feb. 22, March 1-15, April 12-26 and May 3, at 2 p.m., with a break between the first four and last four sessions. **Fee (includes one book): \$50 single; \$75 couple, if sharing one book. Register at Clubhouse I.**

NEW – A Unique Tool for Effective Communication, a CLL course: This course is for people who would like to communicate better with their friends, significant others, grandchildren and others with whom they come in contact. This course will identify six personality types based on the Process Communication Model (PCM). Personality types will be demonstrated and described. Participants will learn the needs, perceptions and communication styles of each type and practice communication skills in a

fun and non-threatening way using realistic scenarios.

Led by Dianne Bradley, this course meets on three consecutive Tuesdays, March 13-27, 10-11:15 a.m. **Fee: \$15. Register at Clubhouse I.**

¡Habla Connigo! a CLL course: Participants will develop an appreciation and understanding of Spanish and the Spanish-speaking world and will be able to use Spanish in conversation on topics covered. Students will use the text, “Spanish is Fun.” The class is taught by Leisure World resident Judy Frumkin and meets Tuesdays, March 6-May 29, 1-2:30 p.m. **Fee: \$15. Register at Clubhouse I.**

¡Habla Connigo! Part II, a CLL course: Using the text, “Spanish is Fun,” participants will continue the study they started in September 2016. The class will cover further chapters of the book and will talk about the culture of Spanish-speaking countries.

The class is taught by Leisure World resident Judy Frumkin and meets Tuesdays, March 6-May 29, 10-11:30 a.m. **Fee: \$15. Register at Clubhouse I.**

For more information about the Center for Lifelong Learning (CLL) and its instructors, visit (www.cllmd.com)

Aspects of Israel: Complex and Beautiful, an ALL course: This course will explore the many facets of Israeli society. Each week, a different Shaliach – Israeli emissary – will give a talk about a different aspect of Israel.

Class meets Thursdays, Feb. 22-March 15, 1:15-2:15 p.m. **Fee: \$27. Register at Clubhouse I.**

Introduction to the Kabbalah, an ALL course: This course will cover the ancient wisdom that reveals how the universe and life

work. On a literal level, the word “Kabbalah” means “to receive.” Join Rabbi Hillel Shaps, from the Greater Washington Kollel, on an exploration of this ancient spiritual path.

Class meets Mondays, Feb. 26-March 19, 11 a.m.-noon. **Fee: \$27. Register at: Clubhouse I.**

Adult Living and Learning (ALL) programs are co-sponsored by the Jewish Residents of Leisure World (JRLW) and the Bender JCC of Greater Washington.

EXERCISE

NEW – Introduction to Dancing for the Hesitant Beginner, a CLL course:

This course is designed for residents who may be too shy or timid to participate in dancing, but want to learn more about dancing and to be introduced to dancing opportunities within the community.

The emphasis of the course is to encourage and guide students toward greater participation in dance opportunities, like the Sock Hop Group, in the community. No partner is required in order to take this course.

The instructor is resident Semoon Chang, who is a member of the Sock Hop Group and the Leisure World Ballroom Dance Club, as well as an occasional instructor of basic dance steps at the monthly Sock Hops.

Class meets Fridays, March 30-April 20, 10-11 a.m. **Fee: \$15. Register at Clubhouse I.**

For more information about the Center for Lifelong Learning (CLL) and its instructors, visit (www.cllmd.com)

NEW – Move It or Lose It: Enjoy dancing to the rhythm of a beat? These aerobic exercises will keep you moving and up on your feet. Movements are designed to promote cardiovascular health while having fun. Warm up and cool down are designed to

strengthen and tone.

Questions? Contact Betty Smith, Certified Group Exercise Instructor, at (301-598-4245).

Class meets Wednesdays, March 21-April 18, 4-5 p.m. **Fee: \$29. Register at Clubhouse II.**

NEW – Move to the Beat, Evenings: This class is for those who do not like to exercise but, as the doctors tell you, you have to keep moving. So, grab a friend and let's have fun as we move by walking, stretching and dancing to music from the '40s on. (Singing along is allowed!)

All you have to do is follow Gerry as she leads you through your moves. Your moves are a little ballet, a little jazz, a little salsa, and more. Remember, your moves should always be done at a pace that is comfortable for you.

Sign up now for this fun, no pressure class. For more information, call Gerry at (301-438-7452). Class meets Tuesdays, March 20-April 24, 6:15-7 p.m. **Fee: \$39. Register at Clubhouse II.**

NEW – Tap Dancing in a Chair with Carol Neckar: This is great way to have fun, learn something new and exercise! If you are an experienced tapper and miss it, or a beginner who always wanted to tap, but can no longer do so, this is the class for you. For experienced tappers, the class is a review. For beginners, the class starts with the basics and progresses to more advanced combinations. It's going to be a lot of fun!

Carol began tapping at age four, continuing through high school when she taught tap as well to offset the cost of lessons. In college, she taught dance for the Physical Education Department and perform in local theater. While her career took her in another direction, her love affair with dance that has never ended.

If you have questions, call Carol at (301-598-5980).

Class meets Thursdays, Feb. 22-March 29, 4-4:45 p.m. **Fee: \$40. Register at Clubhouse II.**

Chair Yoga with Robin, Wednesdays: Age well.

Prevent or diminish the chronic degenerative disease processes that frequently accompany aging. Gentle, yet effective, movements done while sitting in a chair. Increase joint mobility, balance, flexibility, strength, tone, circulation of blood and lymph, and improve breathing. Optional standing balance exercises included. Relaxing and fun! Mindfulness training introduced and basic holistic lifestyle habits discussed.

Instructor Robin M. Hartman, C-IAYT, CHHC, RYT, PTA, is licensed to perform physical therapy in the state of Maryland. She is also a certified holistic health coach, registered yoga teacher, and certified yoga therapist. She will answer questions after class or can be reached at (240-350-8820).

Class meets Wednesdays, Feb. 21-April 11, 12:30-1:30 p.m. or 2-3 p.m. **Fee: \$100. Register at Clubhouse II.**

Zumba Gold with Denny – Mondays or Fridays: This program was designed for the older active adult, a person who has not been exercising in a long time or individuals who may be limited physically. The biggest difference between Zumba Gold and Zumba Basic is that Zumba Gold is done at a much lower intensity. It is just as much fun, just not as fast! Zumba Gold utilizes the same great Latin styles of music and dance that are used in the Zumba basic program. Class meets Mondays, Feb. 26-April 16, 10:30 a.m. or

Fridays, March 3-April 20, 1 p.m. **Fee: \$50 for one day; \$95 for two days. Register at Clubhouse II.**

Senior Sneakers: Get up and go with a safe, heart-healthy cardio workout that is gentle on the joints. The workout includes easy-to-follow low-impact moves and upper-body strength training. Have fun and move to the music through a variety of exercises designed to increase your cardio fitness level, strength, range of movement, and activities for daily living. Bring your hand-held weights and work at your own pace.

Class meets Mondays (with Shirley), Feb. 26-April 2, and Thursdays (with Sue), March 1-April 5, 9-9:45 a.m. You can take the class on Mondays or Thursdays, or sign up for both days. **Fee: \$36, one day per week; \$60 for both days. Register at Clubhouse II.**

Mild Exercise with Shirley: All exercises, seated or standing, are led by instructor Shirley Lloyd.

Class meets Tuesdays, Feb. 27-April 3, and Wednesdays, Feb. 28-April 4, 11-11:45 a.m. You can take the class on Tuesdays or Wednesdays, or sign up for both days. **Fee: \$36, one day per week; \$60 for both days. Register at Clubhouse II.**

WATER EXERCISE

Water Exercise with Nancy: Participants will gain strength, stamina and tone from

this cardio class. Dumbbells are used, although they are not required, and are available for purchase from the instructor.

Class meets Tuesdays, Feb. 27-April 3, and Thursdays, March 1-April 5, 11 a.m.-noon. You can take the class on Tuesdays or Thursdays, or sign up for both days. **Fee: \$36, one day per week; \$60 for both days. Register at Clubhouse II.**

Non-impact Fusion with Beth: This class is held in the round leisure pool (warm water). Dance, yoga poses, and cardio movements are all fused together to give students an awesome, fun class. Participants will improve their posture, balance, flexibility and muscle strength.

Class meets Tuesdays, Feb. 27-April 3, and Thursdays, March 1-April 5, 1-2 p.m. You can take the class on Tuesdays or Thursdays, or sign up for both days. **Fee: \$36, one day per week; \$60 for both days. Register at Clubhouse II.**

Aqua Fit with Shirley: This unique class blends the best of both worlds using water aerobics and yoga. Water aerobics is done in the lap pool for 30 minutes, focusing on cardio and strength. The class then moves to the social warm water pool and finishes up with yoga stretches that focus on balance and posture.

Class meets Wednesdays, Feb. 28-April 4, 1-2 p.m. **Fee: \$36, 1 day per week; \$60, when taken with one day of another water class. Register at Clubhouse II.**

Family Owned and Operated

Serving LW For Over 30 Years



I saved \$150
on my glasses at Eyeland!

\$150 OFF
a pair of
prescription glasses

eyeland

301-871-6454

13808 Georgia Ave. 1 mile south of LW.

HOW SWEET IT IS

**SPECIAL FEBRUARY
SAVINGS**

**ASPENWOOD
SENIOR LIVING COMMUNITY**

14400 Homecrest Road
Silver Spring, MD 20906
301-598-6424

SWEETHEART SAVINGS:

**MOVE INTO A ONE-BEDROOM DEN
APARTMENT FOR THE
ONE-BEDROOM PRICE!***

Discover how sweet the exceptional lifestyle at **Aspenwood Senior Living** is when you move in this February. Move into a one-bedroom den apartment for the monthly rate of a one-bedroom apartment. Plus, enjoy all the activities and amenities our Five Star lifestyle offers.

ENJOY:

- Five Star Dining Experience
- Lifestyle360 activities program
- 24-hour personal care
- Housekeeping and maintenance included
- New friendships around every corner

**Call 301-598-6424 to discover these
sweet savings.**

**Valid on select apartments only with a move in by 2/28/18.
See Sales Director for details.*

www.AspenwoodSeniorLiving.com

**INDEPENDENT LIVING • AREA'S ONLY INDEPENDENCE PLUS
ASSISTED LIVING**



©2018 Five Star Senior Living



CALENDAR *of Events*

Friday, February 16

Clubhouse I

10:00 a.m. Book Club Network: Bookies
10:00 a.m. Book Club Network:
Diversity Strong
12:15 p.m. Kiwanis Club
2:30 p.m. Beginner Bridge Class
3:00 p.m. Hispanos de LW: Games
7:00 p.m. Friday Duplicate Bridge

Clubhouse II

10:00 a.m. Chinese Club
12:00 p.m. JRLW: Pizza Party
1:00 p.m. Zumba Gold Class
1:00 p.m. Ping Pong Club
1:00 p.m. Chess Club
1:00 p.m. Friday Bridge
4:00 p.m. LWAAAC: Black History
7:00 p.m. Baby Boomer Club: Movie

Saturday, February 17

Clubhouse I

9:00 a.m. Gentle Yoga Class

Clubhouse II

9:15 a.m. JRLW Services
12:00 p.m. LGBT Alliance
2:00 p.m. Going It Alone Club: Social
7:00 p.m. Sock Hop Group

Sunday, February 18

Clubhouse I

10:00 a.m. JRLW Breakfast Forum

Clubhouse II

3:30 p.m. Camera Club: Photo
Matinee

Monday, February 19

Clubhouse I

9:45 a.m. AARP Driving Course
11:00 a.m. LW Lions Club Branch
1:00 p.m. Paintbrush and Knife Art
Class
1:30 p.m. Republican Club
1:30 p.m. Hadassah: Judaic Study
Group
1:30 p.m. LW Chorale
6:00 p.m. LW Lions Club
6:45 p.m. Newcomers Duplicate
Bridge

Clubhouse II

10:00 a.m. Clipper Workshop
11:00 a.m. Chair Yoga Class
12:30 p.m. Men's Bridge
1:00 p.m. Chess Club
2:00 p.m. Line Dance Class
2:00 p.m. Chair Yoga Class
3:00 p.m. Line Dance Class
4:00 p.m. Ba Duan Class

Tuesday, February 20

Clubhouse I

9:00 a.m. Blood Pressure Testing
9:30 a.m. Any Medium Art Class
10:00 a.m. CLL Class: MLK In His
Own Words
1:00 p.m. CLL Class: Fluvial
Geography: Rivers of the World
1:00 p.m. Watercolor Techniques Art
Class
7:00 p.m. Duplicate Bridge
7:00 p.m. Trivia Group

Clubhouse II

9:30 a.m. Beginner and Advanced Tai
Chi Class
12:30 p.m. Scrabble Group
1:30 p.m. Comedy and Humor Club
6:15 p.m. Move to the Beat Class

Wednesday, February 21

Clubhouse I

8:45 a.m. Income Tax Service
9:00 a.m. Gentle Yoga Class
10:00 a.m. CLL Class: Heliophysics: A
New Scientific Discipline
10:00 a.m. Express Yourself in Drawing
and Painting Art Class
11:00 a.m. Short Story Group
11:00 a.m. Book Club Network:
Raspbian Readers
1:00 p.m. Diabetes Prevention Class
1:00 p.m. Painting and Miniatures: Oils,
Acrylics and Alkyds Art Class
3:00 p.m. Intermediate Bridge Class
6:45 p.m. Chicago Bridge

Clubhouse II

11:00 a.m. JRLW Program: Charlie
Brotman
12:30 p.m. Chair Yoga Class
1:00 p.m. Chess Club
1:00 p.m. Ping Pong Club
2:00 p.m. Chair Yoga Class

Thursday, February 22

Clubhouse I

9:15 a.m. Stretch and Tone Class
10:00 a.m. Painting is for Everyone Art
Class
10:30 a.m. Beginner Stretch and Tone
Class
12:30 p.m. Ladies Bridge
1:00 p.m. Oils and Acrylics Art Class
1:15 p.m. ALL Class: Aspects of Israel:
Complex and Beautiful
2:00 p.m. CLL Program: Impact of
Social Media on Democracy
2:00 p.m. CLL Class: Great Decisions in
Foreign Policy
2:00 p.m. Memory Café
Clubhouse II
9:30 a.m. Beginner and Advanced Tai
Chi Class
9:30 a.m. Quilters Group
12:30 p.m. Men's Bridge
4:00 p.m. Tap Dancing Class

Friday, February 23

Clubhouse I

10:00 a.m. Drawing Clinic Art Class
1:30 p.m. Any Level Watercolor Art Class
2:30 p.m. Beginner Bridge Class
3:00 p.m. Hispanos de LW: Games
7:00 p.m. Friday Duplicate Bridge

Clubhouse II

1:00 p.m. Ping Pong Club
1:00 p.m. Chess Club
1:00 p.m. Friday Bridge

Saturday, February 24

Clubhouse I

9:00 a.m. Gentle Yoga Class
9:00 a.m. American Needlepoint Guild
(ANG) Marathon
10:00 a.m. Open Studio
7:00 p.m. Ballroom Dance Club
Clubhouse II
9:15 a.m. JRLW Service
2:00 p.m. Going It Alone Club: Bingo/
Video

Sunday, February 25

Clubhouse I

9:00 a.m. American Needlepoint Guild
(ANG) Marathon
10:00 a.m. Hadassah Brunch and
Fashion Show

Dial 301-598-1313
for recorded Daily Events

Meetings of the LWCC Board of Directors, Executive Committee and Advisory Committees

Budget and Finance

Feb. 21, 10:00 a.m., Clubhouse II

Golf & Greens

March 2, 9:30 a.m., Clubhouse I

Energy

Feb. 20, 9:30 a.m., Clubhouse I

Health

Feb. 21, 2:00 p.m., Clubhouse I

Emergency Preparedness

March 1, 9:30 a.m., Sullivan Room

Restaurant

Feb. 26, 10:00 a.m., Clubhouse I

LWCC Board of Directors

Feb. 27, 9:30 a.m., Clubhouse I

The meeting airs on March 5, 7 and 9 at 4 p.m. and 7 p.m. on channel 974.

LWCC Executive Committee

Feb. 16, 9:30 a.m., Sullivan Room

The meeting airs on Feb. 21, 22 and 23 at 4 p.m. and 7 p.m. on channel 974.

Meeting times and locations subject to change.

Leisure World Mutual Meetings

February 20

Mutual 14 Board

9:30 a.m., Clubhouse I

Mutual 13 Board

1:30 p.m., Sullivan Room

February 21

Mutual 5 Board

9:30 a.m., Sullivan Room

Mutual 19B Agenda

1:00 p.m., Sullivan Room

February 22

Mutual 10 Board

9:30 a.m., Sullivan Room

Mutual 20 A Board

9:30 a.m., Party Room 2

Mutual 26 Board

10:30 a.m., Party Room

Mutual 24 Board

1:30 p.m., Community Room

February 23

Mutual 17B Board

10:00 a.m., Party Room

February 26

Montgomery Mutual Board

9:30 a.m., Clubhouse I

Mutual 23 Board

10:00 a.m., Party Room

Mutual 9 Board

10:00 a.m., Clubhouse I

February 27

Mutual 17A Board

2:00 p.m., Party Room

Mutual 21 Board

2:30 p.m., Community Room 3

February 28

Mutual 20B Board

9:00 a.m., Community Room 4

Mutual 19B Board

1:00 p.m., Clubhouse I

Mutual 22 Board

4:00 p.m., Clubhouse II

March 1

Mutual 27 Board

10:00 a.m., Community Room

Meeting times and locations subject to change.

2:00 p.m. Italian Club General Meeting
Clubhouse II

10:30 a.m. Jewish Discussion Group
2:00 p.m. Movie: "Hidden Figures"

Monday, February 26

Clubhouse I

9:15 a.m. Stretch and Tone Class
9:30 a.m. Paintbrush and Knife Art Class
10:30 a.m. Beginner Stretch and Tone
Class
11:00 a.m. ALL Class: Introduction to the
Kabbalah
11:00 a.m. Camera Club: Bender JCC Art
Show Selection
1:30 p.m. LW Chorale
1:30 p.m. Book Club Network: Fall
Readers
1:30 p.m. NARFE
2:00 p.m. Health Advisory Committee:

Smoking Cessation Program
7:00 p.m. Bingo

Clubhouse II

9:00 a.m. Senior Sneakers Class
10:30 a.m. Zumba Gold Class
11:00 a.m. Chair Yoga Class
12:30 p.m. Men's Bridge
1:00 p.m. Chess Club
2:00 p.m. Chair Yoga Class
2:00 p.m. Line Dance Class
3:00 p.m. Line Dance Class
4:00 p.m. Ba Duan Class

Tuesday, February 27

Clubhouse I

9:30 a.m. Any Medium Art Class
1:00 p.m. CLL Class: Fluvial Geography:
Rivers of the World
1:00 p.m. Watercolor Techniques Art Class
2:00 p.m. Book Club Network: Suspensers

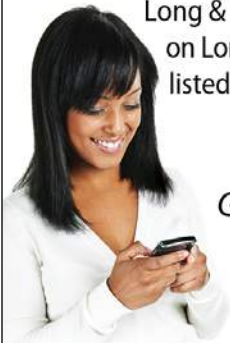


**QR
CODES**

**EXPOSE YOUR PROPERTY TO
TECH SAVVY BUYERS.**

Powered by Long & Foster®

When scanned on a mobile device, a QR (Quick Response) code allows buyers to immediately access unique property information on any Long & Foster listing. QR codes are available on LongandFoster.com for every property listed with Long & Foster.



*Buying or Selling.
Get a Real Edge in Real Estate.
Contact a Long & Foster
Agent today.*



Leisure World Plaza
3836 International Drive
Silver Spring, MD 20906
301-598-7500

CELEBRATING
50 YEARS



7:00 p.m. Duplicate Bridge
7:00 p.m. Trivia Group
Clubhouse II
9:30 a.m. Beginner and Advanced Tai Chi Class
10:00 a.m. LW Apple Club
11:00 a.m. Water Exercise Class
11:00 a.m. Mild Exercise Class
12:30 p.m. Scrabble Group
1:00 p.m. Non-Impact Fusion Water Exercise Class
1:30 p.m. Comedy and Humor Club
2:30 p.m. Unitarian Universalists
6:15 p.m. Move to the Beat Class
7:00 p.m. Camera Club

Wednesday, February 28

Clubhouse I
8:45 a.m. Income Tax Service
9:00 a.m. Gentle Yoga Class
10:00 a.m. CLL Class: Heliophysics: A New Scientific Discipline
10:00 a.m. Express Yourself in Drawing and Painting Art Class
1:00 p.m. Painting and Miniatures: Oils, Acrylics, Alkyds Art Class
2:00 p.m. LW Green
3:00 p.m. Intermediate Bridge Class
6:45 p.m. Chicago Bridge
Clubhouse II
12:30 p.m. Chair Yoga Class
1:00 p.m. Chess Club
1:00 p.m. Ping Pong Club
1:00 p.m. Aqua Fit Class
2:00 p.m. Chair Yoga Class

Thursday, March 1

Clubhouse I
9:15 a.m. Stretch and Tone Class
10:00 a.m. Painting is for Everyone Art Class

10:30 a.m. Beginner Stretch and Tone Class
10:30 a.m. Essential Tremor Group
11:00 a.m. Writers Workshop
12:30 p.m. Ladies Bridge
1:00 p.m. Oils and Acrylics Art Class
1:15 p.m. ALL Class: Aspects of Israel: Complex and Beautiful
2:00 p.m. CLL Class: Great Decisions in Foreign Policy
2:00 p.m. Town Meeting Organization
3:00 p.m. Stamp Club
Clubhouse II
9:15 a.m. Purim Services
9:30 a.m. Beginner and Advanced Tai Chi Class
10:00 a.m. Stitching Group
11:00 a.m. Water Exercise Class
11:00 a.m. Mild Exercise Class
12:30 p.m. Men's Bridge
1:00 p.m. Non-Impact Fusion Water Exercise Class
1:00 p.m. Gilbert and Sullivan Society

Friday, March 2

Clubhouse I
10:00 a.m. Drawing Clinic Art Class
12:15 p.m. Kiwanis Club
1:30 p.m. Any Level Watercolor Art Class
2:30 p.m. Beginner Bridge Class
3:00 p.m. Hispanos de LW: Games
7:00 p.m. Friday Duplicate Bridge
Clubhouse II
1:00 p.m. Ping Pong Club
1:00 p.m. Chess Club
1:00 p.m. Friday Bridge
1:00 p.m. Zumba Gold Class
7:30 p.m. A Musical Tribute to WWII Veterans

FLOORMAX

10'X10' KITCHEN FLOOR
approx \$989 Installed

DURACERAMIC now with **SCOTCHGARD** PROTECTOR
WILL NOT STAIN, WILL NOT FADE, WILL NOT WEAR OUT!



Carpet • Hardwood • Ceramic • Laminate • Vinyl • Bathroom Remodeling

www.floormax.us.com

**The Flooring Professionals
Since 1985**

MHIC #41515

All Leisure World residents receive

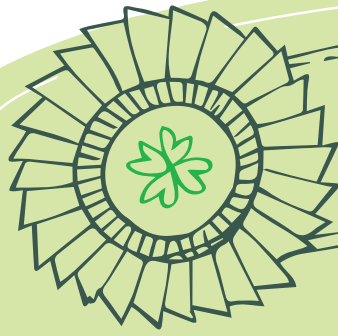
FREE

in home estimates!

Aspen Hill Shopping Center
(301) 460-4100

\$250 OFF
any PURCHASE of
\$3,000 or more!
HURRY Sale Ends SOON!

(Limited time only. Cannot be combined with other offers. Must be presented at time of purchase)



St. Patrick's Day

Saturday, March 17th

\$17 per person plus gratuity

All you can eat Irish Buffet will feature...

- ❖ Corned Beef and Cabbage
- ❖ Shepherd's Pie
- ❖ Irish Stew
- ❖ Boiled Potatoes and Carrots
- ❖ Fresh Steamed Green Beans
- ❖ Potato Leek Soup
- ❖ Salad Bar and Rolls
- ❖ Homemade Bread Pudding

Call 301-598-1330 for reservations

Reservations available from Clubhouse Grille, Stein and Terrace Rooms

Dessert?

Even if you decide to leave the community for dinner, stop by Clubhouse Grille afterwards for dessert and coffee; maybe even a drink.

Enjoy coffee and any dessert for only \$4 after 8 p.m.

Also available:

- Irish Coffee\$3
- Grand Marnier\$5
- Kahlua\$3
- Drambuie\$4
- Bailey's Irish Cream\$3
- Cointreau\$4
- Amaretto DiSaronno ...\$3



Happy Hour

Wednesday through Saturday, 4 p.m. - 6 p.m.

ALL RAIL COCKTAILS ONLY \$3

Pinnacle Vodka, Seagram's Gin, Old Grand Dad Bourbon, Seagram's 7 Whiskey, Bacardi Rum, White Horse Scotch

ALL CALL BRAND COCKTAILS ONLY \$4

Tito's Vodka, Tanqueray Gin, Jim Beam Bourbon, Seagram's VO Scotch Whiskey, Captain Morgan Rum, Cutty Sark Scotch

ALL TOP SHELF COCKTAILS ONLY \$5

Absolut Vodka, Bombay Gin, Maker's Mark Bourbon, Jack Daniels Whiskey, Johnnie Walker Red Scotch

ALL BEER AND HOUSE WINES ONLY \$3

Clubhouse Grille Hours: Wed. – Sat.: 4 p.m. – 10 p.m. | Brunch, last Sunday of each month: 10 a.m. – 3 p.m.

Stein and Terrace Room Hours: Sunday: 9:30 a.m. – 8 p.m. | Mon.– Tues.: 9 a.m. – 8 p.m. | Wed.– Sat.: 9 a.m. – 9 p.m.

For Clubhouse Grille Reservations, call 301-598-1330 | For Stein and Terrace Room reservations, call 301-598-1331

CLASSIFIEDS

THE LEISURE WORLD of Maryland NEWS reserves the right to reject or discontinue any advertisement believed inimical to the best interest of Leisure World. We shall accept advertising on the same basis as other reputable publications: that is, we shall not knowingly permit a dishonest advertisement to appear in the Leisure World of Maryland News, but at the same time we will not undertake to guarantee the reliability of our advertisers. For information on placing advertisements in the Leisure World News, visit (leisureworldmaryland.com) or call (301-598-1310).

ESTATE SALES

CASH FOR ESTATES; whole apartment contents, whole house contents, storage lockers. Buy out/clean up. atticllc.com Gary – (301-520-0755).

ATTIC TO BASEMENT ESTATE Cleanouts LLC - I provide honest and confidential estate cleanouts with reasonable rates. I assist executors, family members and guardians with a personal touch. I will save you time and money providing fast and efficient service. I work with local auction and hauling companies. Please call or email me to set up an appointment Janet Ray (301-384-3198), (wishalot10@aol.com).

REAL ESTATE FOR SALE

A WISE CHOICE. Call me. Marilyn Rubinstein of Weichert Realtors. Your expert in this great community. Top 1% Nationwide. #1 Office Producer with over 40 years of experience and hundreds of sales right here. Call me for a free market analysis. Please call and we'll talk. I make buying or selling an enjoyable and successful experience. Call Marilyn today (301-674-1288).

THINKING OF SELLING your home or that of a relative? Call Sue Heyman of Weichert, Realtors, Leisure World Plaza, community resident for over 14 years. Top 1% of Agents Nationwide, Seniors & Relo Specialist, "Forward 50 Sponsor." Inventory is historically low. Days on the market for our community are now hovering at around one month. Prices are going up! As sellers, now is the time to take advantage of this fast-paced market. I know all of the floor plans and how to price them. Tap into my experience, contractor connections, and marketing to get the best price. My top-quality color brochures, twice-monthly statistical reports specific for your property, multiple websites, staging techniques, and visual tours display your home and our community at its best. Call Sue for your free competitive market analysis. Office: (301-681-0550). Direct: (301-580-5556).

REAL ESTATE FOR RENT

BEAUTIFULLY RENOVATED 1 Bed/1 Bath with great golf course views on the 7th floor of Fairway South available for Rent. Please call David at (301-996-8333).

GARDEN TWO BEDROOM, two bath condo available for lease now. Premier community of Leisure World of Maryland for adults 55 plus! This condo features new flooring, fresh paint, side-by-side washer/dryer. Living room and patio with spectacular view. Call (301-598-4850) to schedule an appointment to see this exceptional home. No smoking! Pet considered, a reserved parking space, utilities and basic cable included.

FOR SALE

HANDMADE JEWELRY by Tina. I make bracelets and necklaces using lampwork beads, leather, silver. Call for apt. (208-413-1985). I am a Leisure World resident.

ETHAN ALLEN GEORGIAN COURT Cherry 5-piece bedroom suite. Suite includes: triple dresser, tri-fold beveled mirror for the dresser, armoire, night stand, and queen rice carved poster bed. Please call Phyllis at (301-806-5928). Best Offer.

BOOK SALE: Walter Johnson High School annual book sale, Saturday, March 3, 9 a.m.-4 p.m. and Sunday, March 4, 9 a.m.-3 p.m. Thousands of books, CDs and vinyl records. All proceeds benefit the All School Booster Club. Donations still being collected Saturday, Feb. 17 and Sunday, Feb. 25, 9 a.m.-noon in the school cafeteria. The school is located at 6400 Rock Spring Dr., Bethesda, Maryland.

AUTO SALES

2008 Grand Marquis loaded with leather. MD inspected. Like new. Only 25,000 miles \$12,000. I will buy your car even if you don't buy mine. Dealing with Leisure World for 38 years. Licensed and bonded. Cash or cashier's check for your car, van or truck. Please call Marty Salins at Auto Plaza (301-325-1973).

1986 OLDSMOBILE CUTLASS SUPREME, 4-door, V-8, a/c. Like new. Only 33,000 original miles. \$5,000. I will buy your car even if you don't buy mine. Dealing with Leisure World for 38 years. Licensed and bonded. Cash or cashier's check for your car, van or truck. Please call Marty Salins at Auto Plaza (301-325-1973).

TRANSPORTATION SERVICES

YOUR PERSONAL DRIVER IS HERE: Lifelong local resident. Reliable, competent service. Comfortable, clean vehicle, can seat from 1 to 6 passengers. Airports, cruiseports, theatres, casinos, appointments... Anywhere, anytime, including long distance trips to other states. Call with questions: Steven Saidman, cell/text (301-933-8899), email (Steve.Your.Driver@gmail.com).

CALL & RIDE – Doctors, airport, casino. Will pick up your groceries. Always on time. Over 50 satisfied customers from Leisure World. Larry Kraft (240-743-8287).

HEALTH CARE SERVICES

The Leisure World News will allow only those advertisers who show proof of certification to advertise that they are "certified nursing assistants."

"A" HOME HEALTH CARE for Senior Citizens – Care you can trust and is affordable. Reliable and qualified aide and nursing staff available. Companionship, personal care, meds, housekeeping, shopping, driving. Full/part-time or live-in. Flat rate for live-in care. Call (240-533-6599).

ELDERLY CARE: Over 10 years experience. Great reference. Available for long days or nights. Can drive. Leisure World resident. (240-461-2188).

HOME HEALTH CARE/Caregiver: Senior citizens, CNA. Work 10 years in LW. Grad, BSN (Filipina nurse). Roman Catholic. Culinary grad in Europe. Speak different languages. Schooling for nutrition. Work long/short term. Call Connie at (240-449-6362).

CNA – 25 years experience. Loving, caring, reliable, looking for full or part-time work. Live-in or -out. Call (240-354-5372) or (301-306-0073).

EXPERIENCED, CARING CNA with CPR certificate seeks live-out position, Monday-Friday, 8-12 hours a day. Call Millie at (301-742-5386).

INDEPENDENT CONTRACTOR for licensed caregiver (GNA). 15 plus years work experience in a nursing home, assisted living, home support and private duty care and companionship. Understand clients' challenges. Very friendly with flexible schedule. Hours: 6-12 hours, Monday-Friday. Contact Florence at (240-277-5053). Reference available upon request.

LICENSED CNA. Reliable and loving, caring person providing quality and affordable care. Day

or night, 2-4 hours. Overnight, flat rate. Call Neema (240-687-7471).

AIDE ASSIST & CARE "Caring for Today for a Brighter Tomorrow." Licensed CNA, CMT, CPR/first aid, food handlers. Services: companionship, errands, dr. appts, cooking, cleaning and everyday care. No job is too big or too small. Please call for further details and pricing. (240-573-6184) E. Scott

I AM SEEKING elderly care for weekends. Drive and will cook and light housekeeping. CPR certified and Alzheimer's specialty. Offering a discounted rate for senior over 85. Call JP at (301-598-3627).

CERTIFIED AND BONDED Nursing Assistant with over 15 years experience. Excellent references, drives, looking for 4 p.m.- 10 p.m. or weekends day or night. Please call Barbara, (240-426-3661).

LPN, CNA, CPR, first aid. Compassionate caregiver. Skills: personal care, meds administration, wound care, BLS checks, insulin administration, G-tube, tracheostomy care, clients with dementia or stroke. Great reference. Roseline (301-466-3186).

GNA with CPR and a valid driver license. Have worked 10 years as a companion and professional caregiver in Maryland and D.C. Duties include bathing, grooming, toileting, meals preparation and feeding, driving, picking up groceries, performing light housekeeping, managing patient's schedule and ensuring all doctor's appointments were kept, administering medications following doctor's instructions, documenting patients' behaviors and reporting abnormalities or new symptoms to supervisor/family. Also provide emotional support and motivation through conversation, encouragement and recreational activities. Maintain appropriate agency records and adhere to infection control and safety procedures. References available. Contact Saly C. at (301-233-7588) or email (salymasseya@hotmail.com).

CNA with over 10 years experience helping older adults with dementia remain safely in the home. Live-in or -out. Please call Rose (240-855-2994).

CNA/CMT – OVER 16 years of experience. Very dependable. Excellent references in LW. Have car. Light cooking, doctor's appts., errands. Bonded, insured. Hospice patients are welcome. Call Ana (240-491-8978, 301-442-6094).

MALE NURSING ASSISTANT, CMT, with CPR, first aid training. Trustworthy, loving and understanding. Worked

with Alzheimer's, Parkinson's, dementia and diabetic seniors. 15+ years experience. Can cook/bake, American/Indian tasty meals. Have good command of English. Own car with clean driving record. Prefer live-in job and work any shift. Referrals available. Call Nirmal (240-722-2728), email (nirmallyall21@gmail.com).

CERTIFIED NURSING ASSISTANT, bonded, insured. Private service for seniors only. Fourteen years experience and good references. Assist with walking, bathing, dressing, prepare meals. Monitor food expiration dates. Engage in physical and mental exercises. Engage in activities (games, memory books). Medication reminders. Light housekeeping. Escort on appointments (hair salon, physical therapy, etc.) Call Sapphire at (214-714-5938).

CERTIFIED NURSING ASSISTANT with 10 years experience working in Leisure World. Available (Mondays-Fridays), weekends overnight. Owns a car and excellent at providing basic care and assistance with activities of daily living, hospital appointments and grocery. Background check available. Please call Ms. Mildred (240-706-1203).

ASSISTED LIVING

ASSISTED LIVING SERVICES - Go to (www.wellnesstouch.biz). A safe, economical, peaceful and clean home in the Olney - Cloverly area. MD licensed since 2010. For a consumer report, view (Caring.com). Ask about our 1st year discount. Call (301-525-8087).

2 RN's **ASSISTED LIVING LLC** - Care beyond call of duty. Just opened our new Assisted Living. Operated by experienced, registered nurses. Accepting a few new residents. Licensed level care 1, 2, 3. Tel. (301-338-4015) or (240-221-3318). Email: (patyusingco@yahoo.com).

GENERAL SERVICES

ALTERATIONS - 30 years experience in Leisure World! Men's & woman's garments picked up and dropped off at your convenience. Very competitive prices. Call Mimi (301-990-6468).

KITCHEN AND BATHROOM Remodeling - Cabinet and countertop replacement, and bathtub to accessible shower conversions. Please call Joe at JML Remodeling. (301-598-8400). Serving Leisure World since 1988. MHIC# 36674. Thank you.

RELIABLE, EXPERT HANDYMAN: painter, carpenter, tile-setter. Licensed and insured. Affordable prices. No job too big or too small. Extensive experience and references at Leisure World. Please call Carolos Gomez (301-305-4727).

STAIR LIFTS: Never walk up steps again! Buy new or certified pre-owned stair lifts at reduced prices. Installation, lifetime warranty and free service contract included. Call (301-448-5254).

CONTINENTAL MOVERS. Local moving services. Free boxes. Local - long distance - hauling - pick-ups and deliveries. \$80 x two men, one hour driving time. (202-438-1489) (301-340-0602) (Cmora53607@msn.com) (www.continentalmovers.net).

TIRED OF POLISHING your silver? Turn it into cash, which does not tarnish. I will come to your home and give you a free evaluation of what I can pay. I buy all gold and silver jewelry, including broken pieces, all sterling silver, gold and silver coins, gold watches, etc. I am licensed with both Maryland and Montgomery County (lic. #2327). If you decide to sell, I can buy your items at that time, but there is no obligation. Call Bob, Gold 4 Good, 8241 Georgia Ave., Ste. 100, Silver Spring, MD 20910 (240-938-9694).

DAHLSTROM SENIOR SUPPORT SERVICES. Assistance with Senior Care and the Care of Senior's Pets. Safe/Reliable door-to-door transportation as needed. General assistance to help maintain independence. Assistance with Pet Care. Dog walking and sitting during short hospital stays, vacations, or as needed. Transportation for grooming/vet appointments. I am a 55-yr. old semi-retired Doctor, Leisure World Resident and dog, cat, bird lover. Bonded, insured, reasonable rates and outstanding Leisure World references. Call Carl (410-499-9362).

CLEANING SERVICES

R&G CLEANING SERVICES - Small, family-owned business catering to you and your household needs. Friendly, reliable and trustworthy with many years of experience. Reasonable rates and flexible hours. Licensed and insured. Help with household organization.

Free estimate with appointment. Call (301-442-5032).

ALICIA'S CLEANING SERVICES - Good references. Good rate. Once a week or every two weeks. (240-286-3807)

HOUSE CLEANING - 22 years experience. Worked in LW for 10 years. Reliable, honest, great references. I live in Aspen Hill. Call Alice (301-946-5996) or (301-520-0074).

COMPUTER HELP

COMPUTER SERVICES - Problems with your PC or Network? Computer Systems Engineer will come to you with help. Home, Business. Call David G. (301-642-4526).

A+ COMPUTER SERVICES. Free in-house diagnostic of your computer, printer, or basic set-ups. A+ certified, virus removal, back up, and retrieve important data, photos, and music. Have served over 400 clients in Leisure World. Also will teach lessons on Microsoft Office

and basic computer skills at your home. Alex Nowrouzi, (301-312-2277). I reside in Leisure World.

COMPUTER LESSONS / SERVICES - Need help with your computer or other digital devices in your home? Tablets, smartphones, smart TVs and more. Computer training, new computer setup, troubleshooting. Lessons at your residence at your convenience. Learn basic computer, email, surfing the web, digital photos. Patient trainer will sit by your side and teach you in plain English - no technical talk! Shopping assistance for all electronic and computer items. Senior specialist since 1996. Senior discount. Call David at (301-980-5840). **COMPUTERTUTOR**

PERSONAL SERVICES

PRESERVE YOUR FAMILY MEMORIES! Don't let your precious photos be forgotten or fade over time. I'll transfer your photos, slides, and mementos to a CD so



Kitchen & Bath Remodeling

301-598-8400

SERVING LEISURE WORLD SINCE 1988

Cabinetry, countertops, tile, custom carpentry.
Safety First- Tub to Shower Conversions.
Price match guarantee on all projects.



MHIC# 36674



Personal Care Services In The Comfort Of Your Home




- Household chores
- Medication reminding
- Daily living and companionship
- Meal planning, preparation and monitoring of eating habits
- Overseeing activities, such as walking, to minimize the risk of accidents
- Shopping for groceries, with or without client
- Bathing and grooming and general personal hygiene
- Help with planning and making decisions
- Nursing services and many more!

Family Owned & Operated
Serving Montgomery County



Call for a Free Consultation and Assessment • 301.717.2212 • www.bestseniorcare.us

they can be easily shared with friends and family. Once they're scanned, I can label the photos to identify the people in them, or bring your photos to life in a memorable DVD slideshow. Call Kim at Virtual Computer Services (301-438-3140).

NOTARY, residing in Leisure World. I offer my service free of charge to Leisure World residents. Can come to your home if needed. (301-379-9694).

FELLOW LEISURE WORLD resident available for companion (local and travel); transportation: errands, church, social and medical appts.; friendly visitor. Excellent references. Call Kathleen at (202-758-9208).

TRANSLATOR: I reside at LW Fairways South and I am a professional translator of English, Italian and Spanish. I translate from these target languages into English and vice-versa. Reasonable prices, cash only please. Contact me at (240-688-1839) or email me at (tonyitalian1951@comcast.net).

ANCESTRY TREE. I can help you with your Ancestry tree. If you have one started, I may be able to add to it. If you haven't started, I can help with that, too. I charge by the hour. Hopefully, I can find cousins you may not have known about. I work very fast. Write to me at cbjornstad2000@gmail.com. Or phone (208-413-0985). I am a 2-year Leisure World resident. Tina

MUSIC LESSONS

PIANO LESSONS: All ages and all levels. Beginners are most welcome! I am a Leisure World resident, experienced and Julliard educated, working exclusively with Leisure World residents and the immediate and extended families. Whether a child under nine or a senior over 90 or someone in between, learning to play the piano is always fun! Reasonable fees. For further information, call me directly: Ken Keyes at (508-612-9647). Please leave a message.

LEARN GUITAR from a patient and experienced professional in the comfort of your home! I make learning this beautiful instrument fun and easy while giving you the ability to make music in many different styles such as flamenco, jazz, rock, Latin or classical! The first lesson is half-price and I offer discounts for groups (if I look familiar it might be because I performed with my award-winning group Trio Caliente at Leisure World back in October). Please text/call (301-728-9045) or email me at (isoguitarist@gmail.com) to schedule your 50 percent-off trial lesson. Samples of my playing available at <http://amilcacruzmusic.com/book-an-event.html>. Thanks for reading!

PET CARE

DOG WALKING by Leisure World couple. 20 minutes for \$12. Also care for cats, birds and other pets; flexible pricing. Experience working for vet, certified wildlife rehabilitator (state of Maryland), graduate credits in Animal Science, pet portrait artist. Now have one (1) dog walking opening, Monday-Friday. References. Call Nancy (301-854-2588).

DOG WALKING and sitting, cat sitting. Drop-ins, mid-day, overnights, vacations, trips, medicine administered, 15 years experience. (301-455-5344). Other pet services are professional pet photography at your residence or outside. Contact Bill Owen Pet Photography and visit, (www.mansbestfriend.org), (301-455-5344), (BillVisual@gmail.com). I love dogs and cats and birds and horses – all creatures great and small. I treat your pet like he/she was mine.

DONATIONS WANTED

USED BOOKS NEED for Book Sale! The American Association of University Women (AAUW-Gaithersburg) will hold its annual, huge book sale in March. Proceeds of the sale support scholarships for women; and mentoring and advocacy programs for girls and women. AAUW is seeking book donations. If you would like

to donate gently used books, contact Liz at (301-840-1258) or (booksale@meral.com).

VOLUNTEER OPPORTUNITIES

MAKE A DIFFERENCE in a family's life. Habitat for Humanity ReStore needs volunteers to work in its ReStore (Rockville or Silver Spring), especially daytime volunteers who can take a regular shift of 3-4 hours. Shifts typically are 9 a.m.-1 p.m., 1-5 p.m., or 3-6 p.m. E-mail (alena.biagas@habitatmm.org) or call (301-990-0014 x 16) if you are interested in volunteering.

VOLUNTEER WITH REPRESENTATIVE PAYEE! Representative Payee helps low-income persons with disabilities manage their finances. Each volunteer is matched with a client who needs help with budgeting, paying routine bills and keeping track of financial matters. If interested in volunteering, contact the Volunteer Coordinator (301-424-0656, ext. 541) or (volunteer@mhmc.org).

VOLUNTEER AS A HOTLINE CALL COUNSELOR with the Montgomery County Hotline! The Montgomery County Hotline is a 24-hour, seven day a week confidential service. Counselors provide supportive and confidential listening; crisis prevention and intervention; and give information, referrals and

Spring is the Best Time to Sell!

Call me to learn what your Leisure World home is worth.
Phone 240-506-2434

I can help you decide what you need to do before placing your home on the market. If needed, I will coordinate any repairs, staging, cleaning, etc. This will help save time and money and can make the whole process go much easier for you.



Check out my 5 star reviews on zillow.com and google.com

- Free Professional Photos
- Free Home Staging
- Weekly Listing Updates
- Weichert Top Producer
- Leisure World® Specialist
- Extensive Marketing Knowledge

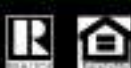


Barbara Michaluk | Weichert

Phone Direct 240-506-2434 (o) 301-681-0550

www.BarbaraSellsMDhomes.com / Email: michaluk@verizon.net

Authorized Leisure World® Specialist / E Pro® Certified Senior Real Estate Specialist® / Certified Staging Agent® Internet Marketing Specialist® / Relocation Specialist®



Work with an Authorized Leisure World® Specialist

resources. Contact (volunteer@mhamc.org) or (301-424-0656, ext. 541) if interested.

MUSEUM GUIDES – at the Montgomery County Historical Society. Work two weekday afternoons or one weekend afternoon per month from noon to 4 p.m. Receive on-the-job training on local history and museum interpretation. Also receive special admission to programs and a 20% discount in the Museum Shop. Contact Amada Elliott, Education & Outreach Coordinator, (301-340-6534) or (aelliott@montgomeryhistory.org).

MEALS ON WHEELS is looking for caring and dedicated volunteers to deliver meals to homebound and disabled individuals in the Leisure World area. Service area includes: Leisure World, Olney, Wheaton, Sandy Spring. Please contact Emily Trotter at (443-573-0925) or email (trotter@mowcm.org).

MEALS ON WHEELS (MOW), which runs out of the Inter-Faith Chapel site, needs more volunteers to deliver meals. If you have or know someone who has one and a half to two hours every other week or one time a month and might be interested in serving in this capacity, please contact (410-730-9476).

KOSHER MEALS ON WHEELS, sponsored by JSSA, needs volunteers to deliver nutritious meals to homebound seniors. Volunteers

will pick meals up at the Hebrew Home in Rockville and deliver them to seniors in Montgomery County. Schedule is flexible. Call Diane Hays-Earp at JSSA, (301-816-2639).

THE SENIOR CONNECTION needs volunteers who live in the 20906 zip code area to drive seniors to medical appointments and help with grocery shopping. Schedules are flexible and just 2-3 hours a month can make a difference! Training and liability coverage are provided. Call (301-942-1049) or contact (volunteer@seniorconnectionmc.org) to learn more.

HELP A CHILD! In just one-two hours a week you can make a difference in a child's life. Volunteers provide friendship and encouragement, help with reading, offer homework assistance, and engage in crafts and cultural activities at schools near Leisure World. For more information, contact Interages at (301-949-3551) or (interages@AccessJCA.org).

NOTICES

KEEPING SENIORS SAFE - KSS. Morton A. Davis, coordinator and resident of Leisure World is available to discuss theft prevention, driving and shopping habits, frauds, home safety inspection and property crimes to any organization. The program is part of the Montgomery County Police Department Volunteer Resource Section. Morton

can be reached at (301-318-0681) or (mortonadavis@comcast.net).

UPCOMING EVENTS

VILLAGES 101: Learn the basics of the village concept in a lively discussion with Rockville village facilitator Trish Evans and an experienced village leader. Have your questions answered about starting a village in your neighborhood and get the resources to support it. This free event is held at the Twinbrook Library, (202 Meadow Hall Dr., Rockville, 20851) on Thursday March 1, 6:30-8 p.m.

WANTED

FAST CASH FOR USED CARS - Big dollars paid for your used car! Over 43 years experience serving Leisure World. Leave message 24 hours. I will come to you. Cash or cashiers' check at your request. I can also help with your new car purchase, any make or model! Md. Dealer #U2927. Call Marty Salins (301-325-1973).

WILL BUY MILITARY, WW2, WW1, Civil War, memorabilia items. Uniforms, weapons, helmets, photos, medals or any other items associated with US, German, Japanese or other military history. Call Dave (240-464-0958) or email (obal7@aol.com).

CASH FOR RUGS: oriental rugs, any condition. European, Asian,

Navajo, etc. (atticllc.com) Gary (301-520-0755).

HOUSING UNLIMITED, INC is a non-profit organization that provides housing for people in mental health recovery. We accept furniture and housewares that are in good condition to furnish our homes. We do pick up. The Housing Unlimited office is (301-592-9314). Thank you.

CASH FOR JEWELRY: gold, silver, costume, diamonds, coins (including foreign), watches, stamp collections. (atticllc.com) Gary (301-520-0755).

TURN YOUR STERLING SILVER and old gold jewelry into cash and do something good for yourself. Gold 4 Good (8241 Georgia Ave., Ste. 100, Silver Spring, MD 20910) buys gold and silver jewelry, including broken pieces, all sterling silver, gold watches and gold and silver coins. I will come to your house and give you a free evaluation of what I can pay. If you decide to sell, I can buy your items at that time, but there is no obligation. Licensed with both Maryland and Montgomery County (lic. #2327). Call Bob (240-938-9694).

WANTED: FIREARM COLLECTIONS, one piece or one hundred, licensed local dealer will come to you. Contact Richard Thornley at (301-253-0425).

Learn about senior living at **Riderwood.**



Request your **FREE** brochure from the premier retirement community in Silver Spring. Get the facts about our vibrant lifestyle, stylish apartment homes, expert health care, and so much more!

There's no risk in learning more!

Call **1-800-989-6177** or visit **RiderwoodCommunity.com**.



Silver Spring

RiderwoodCommunity.com



Bedford Court Lunch & Learn

WEDNESDAY, FEBRUARY 28TH 12P.M.

First time visitors are invited to join us for a delicious lunch and presentation on the benefits of living at Bedford Court, a Continuing Care Retirement Community located in Montgomery County!

VISIT US TODAY.
Call to RSVP at 301-438-6607



- Restaurant style dining program
- Housekeeping, Laundry service for linens, Transportation, Emergency services and more!
- Onsite outpatient therapy services
- An array of social events
- 1 and 2 Bedroom apartment styles



Bedford Court

Elena Price
3701 International Drive, Silver Spring, MD 20906 | 301-598-2900
elena.price@sunriseseniorliving.com | BedfordCourtSeniorLiving.com



 ©2014 Sunrise Senior Living, Inc.



TASTE OF SUNRISE



"The Chef's Table" at Bedford Court

Thursday, March 8 | 12 p.m. - 2 p.m.

Come and enjoy this interactive presentation of Bedford Court's exceptional dining program. Watch our chef prepare a culinary favorite menu as he shares techniques of the trade. Delight your senses and taste the Bedford Court difference. Join us to taste and see why so many seniors call Bedford Court home!

Reserve your seat at "The Chef's Table" by calling 301-438-6607 by March 1st.



RSVP Today

BedfordCourtSeniorLiving.com/RSVP

Bedford Court

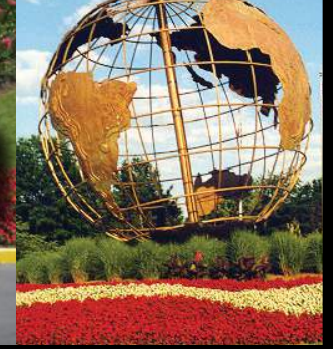
3701 International Drive, Silver Spring, MD 20906 | 301-598-2900
elena.price@sunriseseniorliving.com



©2018 Sunrise Senior Living   



Stan Moffson



#1 In LISTINGS In Leisure World®

Authorized Leisure World® Specialist



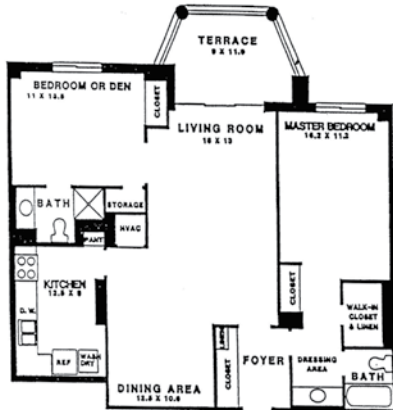
"M" Fairways - \$279,000
2 BR, 2 FB, 1530 sq. ft. Rough for half bath, golf course view, garage space.



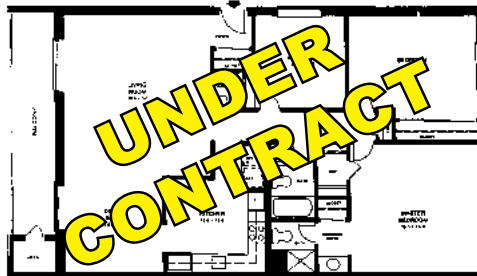
"S" Model - Fairways - \$269,000
2 BR, 2 BA, den/library, 1460 sq. ft. Freshly painted and garage space included.



"Raleigh" Model - \$89,000
1 BR, 1 FB, 990 sq. ft. Freshly painted, enclosed sunroom.



"F" Model - Greens - \$159,000
2 BR, 2 BA, 1115 sq. ft. First floor, freshly painted and garage space included.

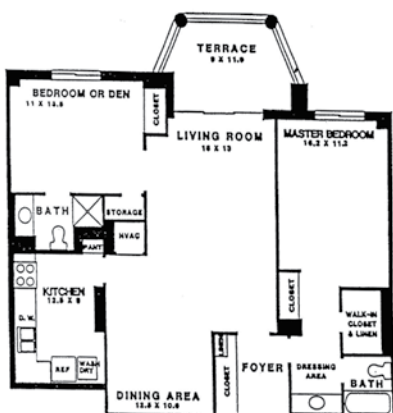


"Capri" Model - \$189,000
3 BR, 2 FB, 1415 sq. ft. Freshly painted, carport, balcony, plush carpet, eat-in kitchen

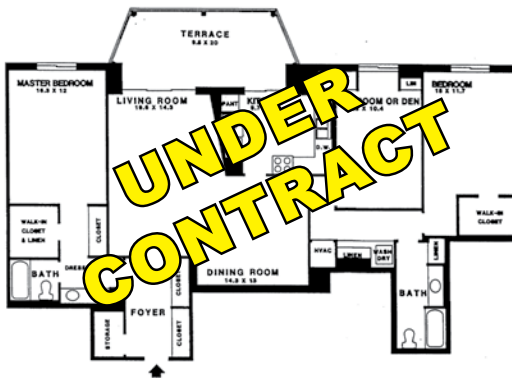


"H" Model - Greens - \$215,000
2 BR, 2 FB, 1210 sq. ft. Freshly painted, new carpet, tiled bathrooms, golf course view, garage space included.

COMING SOON



"F" Model - Greens - TBD
2 BR, 2 FB, 1115 sq. ft. Patio enclosure + outside patio, golf course view, close to elevator.



"L" Model - Greens - \$310,000
3 BR, 2 FB, 1630 sq. ft. Freshly painted, new carpet, golf course view, separate storage room, garage space included.



"K" Model - Greens - \$205,000
2 BR, 2 FB, den/library, 1480 sq. ft. Freshly painted, new carpet, garage space.

Experience for yourself why Stan is #1 in Leisure World®

Call 301-928-3463 and ASK for STAN!



Email: stanmoffson38@gmail.com Office: 301-681-0550
Web: www.stanmoffson.com

