

Leisure World News

OF MARYLAND

March 20, 2020 • Published Twice a Month • residents.lwmc.com • leisureworldmaryland.com

Due to the dynamic nature of the COVID-19 (coronavirus) pandemic and recommendations of public health authorities, the events, meetings and other activities reported in this edition of Leisure World News may have been postponed or canceled after press time.

Leisure World Takes Precautions to Protect Community from Spread of COVID-19 in U.S.

Residents Urged to Follow all Federal and State Health Regulations Regarding Virus

by Stacy Smith,
Leisure World News

In a corner in Clubhouse I, housekeeping staff member Juana Jare lingers over a doorknob with her cleaning cloth on March 13, sanitizing its bulbous surface before the next person travels through its door.

A few feet away from her, a dispenser of hand sanitizer and a sign that reads, “clean



Hand sanitizer sits in the lobby of Clubhouse I. Photo by Leisure World News

hands keep you healthy” sits at the clubhouse entrance, a reminder to all who enter to do their part to protect themselves from, and prevent the spread of, COVID-19 (coronavirus), a virus spread person-to-person that can cause serious illness or death, especially in people age 60 or older or those with severe underlying medical conditions such as heart or lung disease or diabetes, according to the Centers for

Disease Control and Prevention (CDC).

Symptoms of the virus are similar to a respiratory illness and can include fever, cough and shortness of breath. On March 18, the World Health Organization reported the number cases of coronavirus in the U.S. well exceeds 4,000, 85 of which were reported in Maryland, according to the state’s department of health. No known cases of the virus have been reported in Leisure World.

Taking Action

In response to the pandemic,



Housekeeping staff member Juana Jare disinfects a doorknob in the Clubhouse I E&R office on March 13 to prevent the spread of COVID-19 (coronavirus). Photo by Leisure World News

Leisure World has canceled the majority of its meetings and activities until further notice,

► to page 3

Restaurants Shift to Deliveries Only

The Clubhouse Grille and Stein and Terrace Rooms are closed until further notice due to the COVID-19 (coronavirus) pandemic.

However, the restaurants have expanded their hours of meal delivery to Leisure World homes. Delivery is available every day between 11 a.m.-7 p.m. for a \$4 surcharge (no minimum order amount). Orders for pickup are also available. To place an order, call (301-598-1330).



– Leisure World News

MedStar Health Offering Free eVisits in Response to Coronavirus

by Leisure World News

MedStar Health, the medical center’s health provider, recently mailed a letter to all residents containing information about COVID-19 (coronavirus), including tips on when to seek medical care.


In response to the virus, MedStar is offering its e-Visit

service for free to residents who are not feeling well and want to speak to a healthcare professional via video from their smartphone, tablet or PC.

MedStar eVisit providers are available to screen for COVID-19 risk, answer questions and provide guidance to residents who believe they may have been exposed to

► to page 16

INSIDE	Modified Schedule	2	Club Trips Listing.....	39
	Governance & Information	6	Sports, Games & Scoreboards	42
	Thoughts & Opinions	8	Classes & Seminars	48
	Events & Entertainment.....	10	Calendar of Events.....	51
	Movie Schedule	10	Governance Meeting Schedules.....	51
	Health & Fitness	16	Classifieds.....	52
	Clubs, Groups & Organizations	20		



To learn more budget basics, see page 6.

Check for Cancelations and Schedule Changes

by Leisure World News

To protect the community from COVID-19 (coronavirus), several facilities and services are closed until further notice or have modified their hours of operation.

MODIFIED TRANSPORTATION

(as of Wednesday evening, March 18)

Shuttle Buses:

Monday through Friday – Buses are running on a modified schedule (Two buses running the Saturday route, 9 a.m.-4 p.m.)
Wednesday – Bus service to Olney and Aspen Hill is suspended.
Saturday – Buses run 9 a.m. to 1 p.m.
Sunday – Bus service to Our Lady of Grace Church and The Inter-Faith Chapel is suspended.

Mobility Van:

Monday-Friday – 9 a.m.-4 p.m.
Saturday – 9 a.m.-1 p.m.
Sunday – no service

Dial-a-Ride:

Service is suspended.

Metrobus:

Operating on a Sunday schedule until further notice.



Photos by Leisure World News

FACILITIES AND SERVICES SCHEDULE

(as of Wednesday evening, March 18)

Administration Open

CLUBHOUSE I

Comast Xfinity Office..... Closed
Education & Recreation (as of March 21) (see below)
Eyre Travel..... Closed
Rossmoor Library Closed
Clubhouse Grille Closed
Stein Room Closed
Terrace Room Closed

CLUBHOUSE II

Computer Learning Center Closed
Education & Recreation (see below)
FISH Desk..... Open
Fitness Center Closed
Swimming Pool (Indoor)..... Closed

OTHER SERVICES

Golf Course 8:15 a.m.-5 p.m.
Pro Shop 8 a.m.-5 p.m.
MedStar Health Open
MedStar Pharmacy Open
Physical Properties Department (PPD) Open (no walk-ins)
Post Office Open
Security Gates Open
Signal Financial Federal Credit Union..... Open Monday, Wednesday and Friday from 9 a.m.-3 p.m.

Check TV channels 972 and 974, (residents. lwmc.com) and the electronic directories in both clubhouses for updates to these schedules.

Effective Saturday, March 21, and until further notice, E&R office hours are Monday through Friday, 8:30 a.m.-5 p.m. In addition, the clubhouses will be locked from 7 p.m.-7 a.m.

ASPEN HILL

EXXON

301-871-6777

www.aspenhillexxon.com

14011 Georgia Ave.

Owned and Operated by BENNY Since 1980 "or ask for my son DAN."
Friendly, personal and professional service!

Free transportation home and back when you leave your car for service!

• Complete Automotive Maintenance Service & Repair • Most Makes & Models
• Two Years/24 Month Warranty • Factory Scheduled Maintenance

Auto Service Discounts

Oil Change Service Special - \$29.95

5 Qts of synthetic blend 5W/30 oil

Oil Filter & Lube ♦ Multi-Point Inspection

Most cars, plus tax & disposal fee

Full Synthetic Extra

Present this Coupon with Incoming Order. Expires March 31, 2020

Maryland State Inspection Station

EXXON

Auto Care

Leisure World News

OF MARYLAND

An official publication of the Leisure World Community Corporation, Leisure World News is published twice monthly by Leisure World Staff in collaboration with the Communications Advisory Committee.

Leisure World News is published for the benefit of Leisure World residents. Its mission is to provide news and information about community governance and other relevant issues, events, and activities, and to provide residents a forum for their opinions and an opportunity to contribute articles of general interest. All matters concerning the Leisure World News will be decided with this mission in mind.

Leisure World Staff

Maureen Freeman,
Director of Communications
Stacy Smith, Senior Editor
Kathleen Brooks,
Senior Communications Associate
Kimberly Y. Choi, Communications Associate
Cassandra Chisholm, Communications
Project Manager

Editorial: lwnews@lwmc.com
Advertising: lwnewsads@lwmc.com
301-598-1310

Communications Advisory Committee

Alan J. Goldstein, Chair
Bernie Ascher, Vice Chair
aclwn@lwmc.com

Resident Contributors

Mary Catherine Bibro,
Rincy Pollack, Arthur N. Popper
and Marilyn Boesch

Leisure World News of Maryland reserves the right to reject or discontinue any advertisement believed to be not in the best interest of Leisure World.
We will not knowingly permit a dishonest advertisement to appear nor do we guarantee the reliability of advertisers.

2 | Leisure World News March 20, 2020

COVID-19

➤ from page 1

as well as any large gatherings of 50 or more people per the CDC's recommendations, and has urged all clubs, groups and organizations to cancel gatherings of any size.

Although Leisure World is an independent living community, residents are nonetheless encouraged to limit outside visitors to those who are essential, such as caretakers or grocery deliverers.

MedStar Health, Leisure World's medical provider, mailed a letter to all residents a week ago with information about the virus and guidance for those who feel ill or think they may have the virus.

To read the letter in full, sign in to (residents.lwmc.com) > Your Community > Community News. Look for the "MedStar Health Letter to Residents on COVID-19" headline.

Staying Connected

And with many of the state's businesses and services now closed or modifying their hours, and Leisure World management's request that residents limit their interactions with staff to phone and email, residents may find themselves holed up indoors for the coming weeks as the country attempts to slow the pandemic's spread.

Nonetheless, residents have many ways to stay up-to-date about coronavirus and its impact on the community from their own homes.

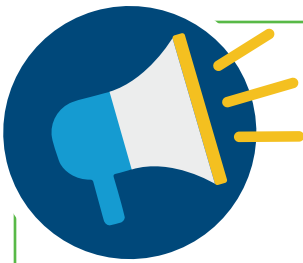
General manager Kevin Flannery has sent several emails to residents addressing the situation and providing timely, updated information to the community. To receive these emails, a resident must be signed up as a user on (residents.lwmc.com). For website sign-up instructions, see right.



HELP STOP THE SPREAD OF CORONAVIRUS

Follow the CDC's tips to help stop the spread of COVID-19 (coronavirus):

- Avoid close contact with people who are sick
- Avoid touching your eyes, nose and mouth
- Cover your cough or sneeze with a tissue, and then throw the tissue in the trash
- Disinfect frequently touched objects and surfaces
- Stay home when sick, except to get medical care
- Wash your hands or use hand sanitizer



Stay Informed, Stay Healthy

by Leisure World News

Leisure World has many ways residents can stay up-to-date on the COVID-19 (coronavirus) pandemic and its impact on the community.

THE RESIDENTS WEBSITE (RESIDENTS.LWMC.COM) PROVIDES:

- cancellations and announcements
- links to credible sources of information about COVID-19 (coronavirus)
- emails from Leisure World management



The website's homepage is regularly updated with schedule changes and coronavirus-related updates.
Screenshot by Leisure World News

TV CHANNELS 972 AND 974 PROVIDE:

- cancellations, schedule changes and announcements
- public service announcements on COVID-19 (coronavirus). Topics include:
 - tips for preventing the spread of the virus
 - sanitizing one's home
 - symptoms of infection
 - the Senior Call Check program for Maryland residents age 65 and older who are home alone

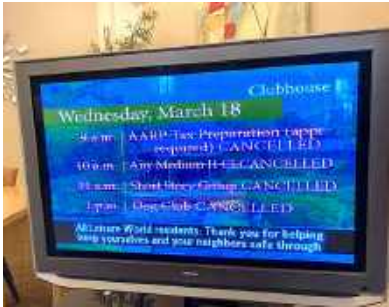


Photo by Leisure World News

SIGN UP ON RESIDENT WEBSITE

Never used the resident website? Sign up today!

Resident and non-resident homeowners can sign up by clicking on "Sign Up Today" on the website's welcome page and following the instructions.

Having trouble signing in or navigating the website? Email your questions or concerns to (websitesupport@lwmc.com) any time; they will receive a response during the workweek.

The help desk also is available Monday through Friday, between 1-4 p.m., at (301-598-1029). Please keep in mind that internet service may be slower than usual during the coming days and weeks due to a higher volume of residents using the service.



Screenshot by Leisure World News



Clean Hands Keep You Healthy.

Wash your hands with soap and water for at least 20 seconds to prevent the spread of germs and viruses.

GOVERNANCE & Information

March 25: Gate Access Forum Canceled

The second open forum on the coming automated gate access system scheduled for Wednesday March 25, is canceled. The forum is expected to be rescheduled for a later date.

– Leisure World News

April 1 and 2: MVA Mobile Office Returns

by Leisure World News

Need to do business with Maryland's Motor Vehicle Administration? The MVA on Wheels is scheduled to return to Leisure World on Wednesday, April 1, and Thursday, April 2.

The van will be located in the Clubhouse II parking lot, where the hours of operation for 10 a.m.-2 p.m. Residents are encouraged to arrive early as wait times may be long.

Services offered include renewal of non-commercial driver's licenses, Maryland photo identification cards and vehicle registration. You also can obtain a duplicate driver's license, a certified copy of a driving record, disability placards, substitute stickers, return tags and duplicate registrations, as well as apply for a change of address.

If you need to register to vote and/or want to register as an organ donor, you can do that at the mobile office, too.

■ Emergency Preparedness Advisory Committee

COVID-19 (Coronavirus) Preparedness Planning

by Emily Geller

As the new coronavirus (COVID-19) spreads throughout the U.S., the Montgomery County Office of Emergency Management and Homeland Security (OEMHS) recommends that people build a preparedness kit in case they become sick and need to stay at home.

In addition, the Centers for Disease Control and Prevention recommends that people over age 60 – the group most vulnerable to COVID-19 infection – stay at home as much as possible and avoid going out to stores, concerts or any crowded public events.

Montgomery County OEMHS recommends that a preparedness kit contain:

- pain relievers, fever reducers, decongestants and cough drops
- alcohol-based hand sanitizer
- thermometer
- facial tissues, paper products
- nonperishable food
- extended supply of prescription medications
- diapers or pet supplies if needed

Non-perishable food generally includes canned soups, vegetables, tuna fish and similar items. However, in this case, since there is no reason to anticipate a power outage due to extreme weather, people can also rely on foods in their freezers, or even food from restaurants delivered to their homes.

**Dial 301-598-1313
for recorded Daily Events**

2020 Governance Meeting Recordings

Executive Committee and Board of Directors meetings are recorded and available to view on (residents.lwmc.com) three business days after the meeting. Click on the website's Your Community dropdown arrow.

Executive Committee Meeting
The Friday, March 20, executive committee meeting is canceled.

Board of Directors Meeting
The Tuesday, March 31, board of directors meeting is canceled.

Group Email Addresses

Residents wishing to contact Leisure World Management or a specific department, the LWCC Board of Directors, or the Executive Committee may send an email to the appropriate email address listed below. It will automatically be forwarded to all members of that group who have an email address on record.

Messages to any of the email groups should pertain only to the management and operation of Leisure World trust properties, services, or activities. Please do not send emails to multiple addresses, as there will be a duplication of recipients and will not result in a faster response to your question or comment. Messages pertaining to mutuals or anything else which Management, the Board of Directors, or Executive Committee does not control should also not be sent to these groups.

The group email addresses are:

- LWMC Management - management@lwmc.com
- LWCC Board of Directors - board@lwmc.com
- LWCC Executive Committee - execcomm@lwmc.com
- Administration - administration@lwmc.com
- Communications - communications@lwmc.com
- Education and Recreation - recreation@lwmc.com
- Physical Properties - physicalproperties@lwmc.com
- Security - security@lwmc.com

■ Energy Advisory Committee

Help Save Energy

by Radha Pillai

The Energy Advisory Committee (EAC) works to identify and take advantage of energy savings opportunities and tax incentives for the mutuals and the Trust.

Any resident with ideas that will help the EAC in this endeavor is asked to come and share them at one of the committee's meetings, which are held on the third Tuesday of every month at 9:30 a.m. in Clubhouse I.

Residents who cannot make a meeting in person are asked to send their ideas to Bob Namovicz, president of EAC, at (namovicb@gmail.com).

Energy Saving Tips

- Turn off lights and most electrical appliances when you leave a room.
- Turn down the thermostat to 50 degrees Fahrenheit if you are going to be out of town for more than a day during winter months.
- If buying a car, consider an electric or hybrid car.
- Update your kitchen appliances with more efficient ones if you can.
- Make sure your outdoor light is not on during the daytime.
- Keep windows and doors closed if heating or cooling is on inside the unit.

Save energy. Save the environment.

Comcast Xfinity Office Closed Until April 6

The Comcast Xfinity office located in the Harbor Room of Clubhouse I is closed until Monday, April 6.

Residents who having billing questions or need assistance with their cable TV or internet service can call (855-638-2855) or email (LW_Comcast@comcast.com).

— Leisure World News

■ The Inter-Faith Chapel

Chapel Cancels Services and Activities Through April 3

by Dr. Woodie Rea

The Inter-Faith Chapel has canceled its Sunday, March 22 and March 29 worship services, along with in-person programs, activities and events through Friday, April 3.

The well being of all who enter the Chapel is of ultimate concern, and staff feels this is a faithful and appropriate response to this evolving situation. While this action is designed to slow the transmission of the virus by increasing social distancing, the Chapel also hopes to increase other means of social connecting by offering spiritual resources such as sermons, prayers and devotional material online or by mail. Residents can also stay connected by watching the

Chapel's worship program on channel 972 on Wednesdays at 2 p.m.

Even as the Chapel temporarily stops gathering in person, its ongoing expenses of personnel, facility utilities, and missions continue. The Chapel still depends on residents' faithful and generous financial gifts to keep its congregation thriving. Please remember the Chapel with regular tithes and offerings as you are able. Mail in your check or give online at (www.inter-faithchapel.org).

The Chapel will maintain regular office hours, which are Monday through Friday from 9 a.m.-3 p.m. The Chapel remains available to assist residents in any way it can during this challenging time. Residents can reach the Chapel at (301-598-5312) or (b.bonner@inter-faithchapel.org).

Credit Union Reduces its Hours

by Leisure World News

Signal Financial Federal Credit Union in the Administration Building has reduced its hours. The credit union is now open on Monday, Wednesday and Friday from 9 a.m.-3 p.m. and is closed on Tuesday and Thursday.

Every Friday, the credit union offers coffee and breakfast options to residents between 9-11 a.m.

Not a member yet? Signal Financial offers a full range of personal, business and investment services with a personal touch. In addition, they offer competitive rates and rewards on loan and deposit products.

All residents are welcome to join Signal Financial and let the credit union be its financial consultant.

Strategic Planning Swaps In-person Community Meetings with Phone Calls

by Leisure World News

In the interest of protecting residents' health and safety, the two community meetings on strategic planning that were scheduled for March have been canceled. Residents who volunteered to attend these meetings will instead be asked to answer questions by phone.

The information gathered from these conversations with residents, along with the information collected from last year's focus groups and resident survey, will be used by consultants from George Mason University (GMU) to develop a strategic plan for Leisure World's future.

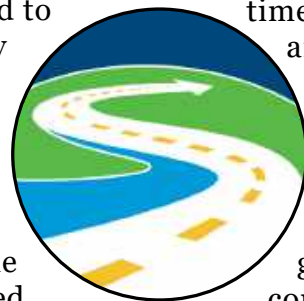
Phone calls are expected to be made to volunteers in the next few weeks and should take about 15-30 minutes each. Volunteers will be notified by mail on the specific

procedures for these phone calls.

GMU's consultants and the Special Strategic Planning Committee (SSPC) considered the option of replacing March's in-person meetings with online meetings or conference calls, but these were determined too time-consuming, difficult and costly to conduct.

Despite the loss of interaction between residents that these in-person meetings would have likely generated, GMU's consultants say they will still be able to gather the information they need to develop a strategic plan.

GMU's consultants and the SSPC anticipate having a draft of the strategic plan to the Leisure World Community Corporation board of directors in late April or May, and a report completed by the end of spring or early summer.



Giant Food Modifies its Grocery Service

Giant Food in the Leisure World Plaza has suspended its online ordering and curbside pickup. While the store's Peapod delivery service is still active, current delivery times are about six to seven calendar days after an order is placed.

The store is open Monday through Saturday from 6 a.m.-midnight and Sunday from 6 a.m.-11 p.m.

— Leisure World News

Wood Shop Closed

by Dave Nachtsheim

The wood shop in Clubhouse I is closed until further notice. No members or monitors may use the shop for any purpose during the period of closure. No meetings will occur at the shop. Planned events and trainings are postponed indefinitely.

The wood shop's executive committee is paying attention to the ongoing health crisis and will reopen as soon as is prudent. Notices are posted on both entrance doors, the upstairs and main door, and the electrical panels have been specially locked to ensure cooperation from all who hold keys to the shop.

Members will receive an email notification when the shop reopens.



Budget Basics

Part III: Understanding Mutual Operations and the Management and Operating Agreements

by Leisure World News

Previously in Leisure World News:

Feb 7: "Part I – Understanding Your Monthly Homeowner Payment and the Budget That Determines It"

Feb 21: "Part II – Understanding the Budget's Community Facilities Fee".

In this third installment of "Budget Basics," let's examine another part of the budget: mutual operations and the Management and Operations (M&O) agreements.

MUTUAL EXPENSES

In any community association, homeowners pay a fee for day-to-day operations. At Leisure World, the "Trust" portion (\$204) of a homeowner's monthly payment (assessment) pays for the community's commonly owned properties and services.

Likewise, each of the community's

29 residential properties, referred to as "mutuals," has its own day-to-day operations, which can include everything from utilities to landscaping and snow removal.

The mutual portion of each homeowner's monthly assessment helps fund the mutual's day-to-day operations and reserves.

MUTUALLY SPEAKING

The mutual portion of the assessment is:

- set annually by the mutual's board of directors
- varies by amount from mutual to mutual
- varies by amount within a mutual; for example, the fee for a small studio would be less than a sprawling 3-bed, 3-bath home



DIRECT EXPENSES

Part of the mutual portion of the assessment is retained by the mutual to cover its direct expenses, such as:

- utilities (water and electricity)
- insurance
- beautification (signs, plantings, etc.)
- Reserves (replacement and repair of major exterior components, such as replacement of a roof or sidewalk)



Asphalt is replaced in one of the mutuals, courtesy photo



COMBINED MUTUAL EXPENSES

Another part of the assessment's mutual portion goes toward paying for services that have been contracted through a Management and Operations (M&O) agreement the mutual has signed with Leisure World of Maryland Corporation.

These M&O agreements vary by mutual, but often include:

- landscaping
- accounting
- support services (human resources, information technology)

The Leisure World Community Corporation (LWCC) budget allocates to each mutual its share of the expense for these services.



A McFall and Berry Inc. employee trims grass in one of the mutuals. Photo by Leisure World News

This is the third article in a short series of articles about understanding the Leisure World Community Corporation budget, how it's developed, what it entails, and how it determines a portion of your monthly payments to your mutual.

In time for the start of the community's budget development for 2021, the next and final article will examine how the Leisure World Community Corporation (LWCC) advisory committees, LWCC board of directors and management work together on this effort every year.

The 2020 community budget is available to view or download at (residents.lwmc.com) > Documents > Financials > 2020 Community Budget.

SERVING YOUR 2020 REAL ESTATE NEEDS

Enjoy the benefits of our combined strengths!

**Specializing in
Retirement Living**
**Ask Us About Our
Metro Expertise Too!**

**All Properties
Advertised Are Our
Own Transactions!**



**Hot Spring Market
Is Here!**



SUDHA BAXTER

RE Licensed
MD & DC
202-368-8536

SUE HEYMAN

Former Mont. Co. Teacher
Seniors Specialist
MD RE Licensed
301-580-5556

RICK WINKLER

CPA
RE Licensed
MD & DC
301-404-3105

Weichert Award Winning Top Producers • Community Resident and Community Investors
Expanded Coverage for Buyers and Sellers in DC and MD • Awarded for Excellent Client Service
Sue is #1 Lister in the Regency Mutual 25 • Top 1% of Agents Nationwide



SOLD! \$380,000

"Cabot" Model Patio Home
3 BR 2 FB, Kit, BA & flrs updates
fenced patio 2 car gar. 1193 sf.



LISTING SOLD! \$330,000

Villa Cortese "L" Model
Building 4, 3BR, 2FB,
updated kitchen, 1520 sf.



SOLD! \$285,000

**Vantage Point West
"F" Model + Garage**
2BR, 2BA, 1315 sf.



LISTING SOLD! \$300,000

Greens "K" Remodeled + Gar
2 BR, Den, 2 FB, stunning kit. &
BAs, exceptional views, 1480 sf.



LISTING SOLD! \$530,000

Overlook "L" w Garage Space
End unit w best view, huge kit w
stainless, fully renovated, 1735 sf.



SOLD! \$380,000

**Vantage Point West
"J" Model + Garage**
3 BR 2 BA, 1540 sf.



LISTING SOLD! \$440,000

Villa Cortese New Building "Q"
Luxury 2 BR, den, 2 FB, green
view, garage space incl, 1574 sf.



LISTING SOLD! \$350,000

"Cabot" Model Patio Home
3 BR, 2 FB, kit & BA updated,
fenced patio, 2 car gar. 1193 sf.



LISTING SOLD! \$715,501

Regency Oak Hill Model - New
hwd flrs, updated BAs, 2 first flr
BRs, two car garage, 3684 sf.



SOLD! \$719,000

The Regency "Falconcrest"
4 BR, 3.5 BA, new carpet & paint,
granite & SS appliances, 3322 sf.



LISTING SOLD! \$468,000

Elegant, Updated Patio Home
Turnkey, 2 BR, 2 FB, family room
w/FP 2 patios, 2 car gar, 1470 sf.



LISTING SOLD! \$485,000

Villa Cortese New Building "T"
3 BR, 2 FB, upgraded appliances
& floors, garage space, 1560 sf.

CALL US FOR FREE:
CONSULTATION, COMPETITIVE MARKET ANALYSIS,
& COMMUNITY BOOKLETS

Sue Heyman: 301-580-5556 sueheyman@aol.com
Rick Winkler: 301-404-3105 rwinkler@weichert.com
Sudha Baxter: 202-368-8536 sudhabaxter@yahoo.com
Weichert Realtors: 301-681-0550 office

THOUGHTS & OPINIONS: *From Our Residents*

A Few Things to Remember

- Relevance:** Make sure that your submission is relevant to the LW community as a whole and not to just one person, mutual, or organization.
- Respect:** Remember that your opinion is about ideas, not individuals, and please avoid personal attacks.
- Brevity:** Being concise will ensure that your opinion will have maximum impact.
- Accuracy:** Document all factual assertions. Opinions that are backed up with facts are more powerful, but only if the facts are accurate.
- Ownership:** All submissions are subject to editing but you will have the opportunity to approve the edits before publication.

*Opinions are strictly those of the writers. **Thoughts and Opinions is maintained by the Communications Advisory Committee.***

SUBMITTING AN ITEM TO THOUGHTS & OPINIONS

1. Submissions must be emailed to (aclwn@lwmc.com) or delivered to the LW News Office.
2. Receipt of submissions will be confirmed by email or telephone.
3. Submissions must state the writer's name, address, telephone number, and email address, if any, but if the material is published, it will include only the writer's name.
4. LW News cannot guarantee when or if a submission will be published.
5. To view the full Leisure World News Guidelines, sign in to (residents.lwmc.com) and click on Documents, then select the Advisory and Special Committees folder, and click the Communications folder.

**Leisure World News
is also available on
residents.lwmc.com**

**Interested in advertising in the
Leisure World News?**

For information:
call 301-598-1310
or email lwnewsads@lwmc.com



Be Impressed

**THE LOCATION. THE SERVICE. THE AMENITIES.
THE REPUTATION. THE OPPORTUNITIES.**

The endless ways for you to engage and connect with friends, neighbors, and the community. Visit us and experience what life is like at **Gardenside at Ingleside at King Farm**. We are confident you will be impressed.



INGLESIDE AT KING FARM
240-398-3846 // www.ikfmd.org



Ingleside at King Farm is a not-for-profit, CARF-accredited,
SAGECare-certified, life plan community.

SCHEDULE YOUR PERSONAL TOUR!

PERRIE, LLC PRESENTS

EASTER DINNER

in the Crystal Ballroom

Sunday, April 12th
Noon, 3 or 6 p.m.

\$32

301-598-1330
to reserve

Tender leg of lamb
Beef tenderloin medallions
Hand-carved roast turkey breast
Glazed pit ham
Grilled salmon fillet
Roasted Brussels sprouts
Green beans almandine
Honey glazed carrots
Whipped sweet potatoes
Whipped potatoes and gravy
Homemade bread dressing
Fresh seasonal salads
Assorted cakes, pies and cobbler

ALL YOU CAN EAT

CRAB FEAST

July 29th
August 26th
September 30th
October 28th

Purchase before
March 31 and
receive the
discounted rate of
\$50 per ticket!

Feast also includes steamed shrimp, fried chicken, fresh corn, baked beans, green salad, cole slaw, potato salad, rolls and cookies and brownies.



Order delivery from the Stein and Terrace Rooms in Clubhouse I

Expanded hours! Every day from 11 a.m. – 7 p.m.

Call us at 301-598-1330 to place your order.
No minimum order amount! Only a \$4 surcharge for delivery.

Clubhouse Grille and Stein and Terrace Rooms: closed to sit-in dining until further notice

For Clubhouse Grille Reservations, call 301-598-1330 | For Stein and Terrace Room reservations, call 301-598-1331

EVENTS & Entertainment

■ Education and Recreation Department

E&R Cancels March Events, Postpones Others

In the interest of protecting residents and the community from COVID-19 (coronavirus), the Education and Recreation Department has canceled the remainder of its events. They include:

- Double Play (March 23)
- A Diva Making History (March 28)
- “Second Act” film (March 29)

Additionally, several April events are either canceled or postponed.

Residents who’ve already purchased tickets for these events may call the Clubhouse I E&R office at (301-598-1300) or the Clubhouse II E&R office at (301-598-1320). *Note: Events are subject to change.*

■ Sock Hop Group

March 21: Sock Hop Dance Canceled

The Sock Hop Dance scheduled for Saturday, March 21, is canceled. For questions about the Sock Hop Group, contact Doug Brasse at (301-448-8708).
– Abigail B. Murton



■ Ballroom Dance Club

March 28: Ballroom Dance Canceled

The ballroom dance scheduled for Saturday, March 28, is canceled.
– Ida Leong



2020 Movie Schedule

Sponsored by the E&R Department

Movies are FREE and shown for your enjoyment in the Clubhouse II auditorium, though you will need a ticket. Please pick up your tickets (limit two per person) on the date indicated below at either Clubhouse I or II. Please bring your Leisure World ID; and remember tickets can go fast.

Show Date & Time	Movie	Tickets Available
May 10, 2 p.m.	Poms	April 21
May 21, 1 p.m.	What Men Want	May 5
June 11, 1 p.m.	Stan and Ollie	May 19
June 21, 1 p.m.	Vice	June 9

Movies are subject to change.

■ Fireside Forum

April 5: Fireside Forum Program Canceled

As a cautionary measure, the Fireside Forum program scheduled for Sunday, April 5, has been canceled.

– Jonas Weiss



■ Education and Recreation Department ■ Foundation of Leisure World

The Rat Pack’s Return is Postponed

Tony Sands, Johnny Petillo and Geno Monroe, originally scheduled to perform as The Rat Pack on Saturday, April 11, will instead perform on Saturday, Aug. 29.

Sands as Sinatra, Petillo as Martin and Monroe as Davis Jr. will perform songs and comedy so reminiscent of the Rat Pack, you will think you have returned in time when the Pack was in its heyday.

This musical journey will feature some of the legendary trio’s greatest hits, and one’s everyone remembers, such as “Come Fly with Me,” “My Way,” “New York,” “Everybody Loves Somebody,” “That’s Amore!,” “Mr. Bojangles” and “Candy Man.”

Sponsored by the E&R Department and The Foundation of Leisure World, tickets will go on sale later this year.

The Foundation of Leisure World is a 501(c)(3) organization that was established for health, educational and cultural purposes. Contributions to the Foundation may be claimed as deductions on income tax returns to the extent permitted by law.



The Rat Pack performs classic tunes, courtesy photo



Coming in 2020

The E&R Department is pleased to provide the following programs.

May 7, 2 p.m.	Julie Kurzava and Diane Kinsley: “Put on a Happy Face”
May 16, 9:30 a.m.	Spring Flea Market
May 23, 4:30 p.m.	Duke Ellington School for the Performing Arts
May 30, 2 p.m.	Jones and Haywood Dance School

Watch Leisure World News for more information on these and other upcoming programs throughout the year.

Spring Flea Market Rescheduled for May

The semi-annual spring flea market, originally scheduled for Saturday, April 25, has been rescheduled for Saturday, May 16. More information will be forthcoming.

Residents only will be eligible to rent vendor space at the market and a resident must be present at the table at all times.

To accommodate the greatest number of residents and groups, space is limited to a maximum of 12 feet of space (the equivalent of two 3x6' tables or one 3x6' table and one rack) per rental.

Tables can be rented at \$18 for 3x6' and \$9 for 3x3'.

One chair is provided for a 3'x3' table, and two for a 3'x6' table. The fee for extra chairs is \$1 each. A limited number of clothing racks are available to rent for \$10 each.

Payment can be made by check, payable to Leisure

World of Maryland Corporation, or by MasterCard, Discover or VISA.

Tables, chairs or racks cannot be brought into the sale. (Display racks that fit on top of rented tables are acceptable).

Merchandise may not be placed on chairs, next to or in front of tables and racks. Space is limited. Placing items around the rented space impedes traffic and is a major safety concern and therefore is not permitted.

Day of Flea Market

On May 16 at 7:30 a.m. numbers will be given out to flea market vendors who want help bringing merchandise into the clubhouse.

Market vendors may begin bringing in their merchandise at 8 a.m. The market will open to the general public at 9:30 a.m.

Keep in mind that clothing

offered for sale at the market must be clean and in good condition.

Vendors are reminded that they must remove all unsold merchandise and debris (boxes, hangers, wrapping materials, etc.) when they leave.

Sales Tax

Individuals and organizations are responsible for the collection and payment

of sales tax. You may obtain this sales tax license from the Maryland State Department of Assessments and Taxation at (taxes.maryland.gov/Business_Taxes/Business_Tax_Types/Sales_and_Use_Tax/).

Remember, the items you are willing to part with may be your neighbor's sought after treasures.

Join us for a fun-filled day!

■ Education and Recreation Department

April 17: Revivals: the Broadway Cash Cow

Through song and lecture, Steve Friedman returns to Leisure World to delve into the history of the Broadway musical. On Friday, April 17, at 2 p.m. in Clubhouse I, Friedman explains how revivals of Broadway shows are often "cash cows."

A Washington, D.C., resident, Friedman is a trained classical tenor and has performed many musical theater roles from "Camelot" and "Damn Yankees" to "Sweeney Todd."

And it was through performing in musicals and his love of musical theater that he developed a desire to lecture on the history and development of the Broadway musical.

Tickets, \$6 per person, are on sale in both clubhouse E&R offices. Please bring your Leisure World ID.



Steve Friedman, photo by Leisure World News

■ Arts In Motion (AIM)

April 10: Jazz Group SUPERNOVA Performs

by Grace C. Cooper

For the past five years, Arts in Motion (AIM) has consistently brought quality local jazz artists to Leisure World. And on Friday, April 10, local artist Nasar Abadey brings his SUPERNOVA jazz group to perform at Leisure World.

The multi-talented Abadey is a skilled drummer, educator, composer and the founder of SUPERNOVA. His music has been described as "beyond time and space," according to Abadey's website.

SUPERNOVA expresses its compositions through traditional African rhythms, bebop, fusion, Afro-Cuban, Afro-Brazilian and freeform genres. The group's musical inspirations include John Coltrane, Duke Ellington and Wayne Shorter, among others.

Tickets for this performance are \$25 apiece (checks only, payable to AIM) and are on sale at the Clubhouse I E&R office. Snacks are included in the ticket price. The concert is open to all residents, but only AIM members may reserve tables of eight or more.

Doors to the Clubhouse I Crystal Ballroom open at 4:45 p.m.; snacks are served at 5 p.m. and the concert begins at 6 p.m.

Get your tickets now!



Nasar Abadey, courtesy photo



Wills, Wealth Planning & Trusts



Luann Battersby
Leisure World neighbor
3510 Chiswick Ct

Phone: 301-518-0423
Email: Luann_Battersby@comcast.net
Housecall: No charge!
www.battersbylawoffice.com
Simple will:
\$175/person; \$330/couple
Living will/medical directive \$80
Financial power of attorney \$90

Probate: flat fee or hourly, not a percentage of estate.

Estate and tax planning.
I also assist clients in other related matters when they need my help.

The Rossmoor Camera Club plans to present a photo matinee slideshow on Sunday, April 19, at 3:30 p.m. in the Clubhouse II auditorium.

Louis Paley's photos will present nature's beauty – birds, flowers, trees, mammals and insects – in Leisure World and nearby. The matinee is free and all residents are welcome to attend.

Paley became an ardent wildlife photographer two years ago. Residents may have seen him walking around the community carrying huge lenses and a tripod.

During the last two years he has photographed a wide range of birds, mammals and other beautiful nature scenes, including a pileated woodpecker, kits and the bright red glow from Leisure World's many burning bushes.

Paley began taking photos when he joined the Club seven years ago. At first, he took photos of a wide variety of subjects for the Club competitions' general category.



From left, a pileated woodpecker and fox kits are just a few of the nature scenes found in Leisure World that are included in the Club's upcoming photo slideshow. Photos by Louis Paley

After winning many competitions, he was promoted to the Club's advanced category, in which he competes and learns from the Club's best photographers.

Prior to moving to Leisure World, Paley occasionally took photos while traveling. However, he always wanted to learn more about photographic techniques, so joined the Club and took the Center for Lifelong Learning's basic photography class.

Subsequently, he purchased a point and shoot camera and became a general photography hobbyist. After a few years he decided to take additional photo classes in order to specialize in nature and wildlife photography.

Paley was an environmental engineer who retired in 2003 after a 30-year career with the U.S. Environmental Protection Agency.

12 | Leisure World News March 20, 2020

■ Education and Recreation Department

Tour the World's Music with TransAtlantic Duo

You might think that there is not much in common between Bach and Klezmer, or between traditional Russian music and jazz.

Yet the TransAtlantic Duo – Alexander Paperny (balalaika) and Vladimir Fridman (guitar and vocals) – command their instruments with virtuosity to seamlessly bring together these diverse styles in their exploration of the world's musical heritage. Their always popular program includes well-known classical pieces, Latin, Russian, Jewish and Klezmer music.

Sponsored by the E&R Department, the Duo was originally scheduled to return to Leisure World on Sunday, April 19, but the performance will be postponed to a later date. More information will be forthcoming.

About the Musicians

Paperny and Fridman have worked together for many years. In Moscow, Russia, between 1988 and 1998, they played in an eccentric show group, Jazz Balalaika, with which they toured all over the world and recorded several CDs.

Paperny lives in Hamburg, Germany, while Fridman lives in Gaithersburg, Maryland. Yet this distance does not separate these two musicians. Since 2005, the two have annually toured in the U.S. and Europe as the TransAtlantic Duo. In the U.S., they have performed at the John F. Kennedy Center for the Performing Arts in Washington, D.C., and many other great venues.

Fridman is a musician with the ability to move flawlessly through classic, jazz and the traditional music of different countries with improvisational spirit, soul and true



TransAtlantic Duo, courtesy photo

virtuosity.

Paperny is one of the most famous balalaika musicians in Western Europe. His genuine virtuosity and temperament merge into an unusual combination. He and his instrument carry you away into a magical world of sounds.

■ Lions Club of Leisure World

April 24: Take the Stage Dancers and Singers Perform

by Larry Cohen

On Friday, April 24, the Lions Club presents "Take the Stage" performance company to perform musical songs and dance numbers at 7 p.m. in the Clubhouse II auditorium.

The title of the revue is "Relativity" and includes songs and music from "Grease," "Easter Parade," "Jerome Robbins' Broadway," "Newsies," "Mean Girls," "Beetlejuice" and more. Save the date for a happy evening with teenagers singing and dancing their way into your hearts.

Information on ticket sales will be forthcoming.



Take the Stage, courtesy photo



An Exclusive Engagement
with MDLO Orchestra

PIANIST CECILE LICAD



One Performance only
April 22 at 7:30PM
The Music Center at Strathmore

Brahms'
intensely emotional Piano Concerto No. 1.

Bartók's
dazzling Concerto for Orchestra

Gershwin's
iconic, jazzy An American in Paris



Tickets start at \$25.
**Tickets at: www.mdlo.org
or call 301.581.5100**

Conducted by Music Director
Louis Salemno



FLOORMAX

**YOUR FLOORING
PROFESSIONALS
SINCE 1985**

**Exclusively at FLOORMAX
PERGO EXTREME**
Kid-proof! Pet-proof! Water-proof!

On sale starting at

\$999*

INSTALLED

any kitchen, family room or
active room up to 10'x12'

(*See store for details and selection.)

FREE

- In-home consultation
- Pad upgrade
- Standard furniture moving

WEAR-DATED

**Whole House of Incredibly
Soft & Durable Nylon Carpet**

Starting at

\$1999*

INSTALLED

(Includes **FREE** delivery and pad.)

Up to 800 sq. ft.

(*See store for details and selection.)



Aspen Hill Center

13629 Connecticut Ave.

(301) 460-4100

WWW.FLOORMAXFLOORS.COM

GUARANTEE

110%
FLOORMAX

*See store for details

\$250 OFF!

***Any Purchase of \$3000 or More!**

*Limited time only, cannot be combined with any
other offer. Must be presented at time of purchase.

**Carpet | Hardwood | Ceramic |
Laminate | Vinyl**

Education and Recreation Department

Thursday Afternoon at the Movies

April 16: 'Breakthrough'

The E&R Department is pleased to present "Thursday Afternoon at the Movies." Films are shown at 1 p.m. in the Clubhouse II auditorium.

On April 16, the presentation is "Breakthrough" (2019, 1 hour 56 minutes, biography/drama, rated PG for thematic content including peril).

Free tickets, limit two per person, are required and can be obtained beginning Tuesday, March 24, at 8:30 a.m. in either clubhouse E&R office. Please bring your Leisure World ID.

Fourteen-year-old John Smith falls through the ice on Lake Saint Louis and is under the freezing water for 15 minutes

before being rescued and rushed to the hospital. Although John is clinically dead and on life support, his mother, Joyce, does not give up hope, firmly

believing that through constant and devoted prayer a miracle can be achieved.

Based on true events and the book "Breakthrough" by Joyce Smith, the film stars Marcel Ruiz as John, Chrissy Metz as John's mother Joyce and Josh Lucas as his father Brian.

Thursday movie screenings are for your enjoyment; there is no charge. Be sure to pick up your ticket(s) in advance if you plan to attend. Please note: No one will be seated after 1 p.m.



Jewish Residents of Leisure World

April 22: 'The Invisibles'

by Jonas Weiss

JRLW and the Bender Jewish Community Center's Coming of Age in Maryland program show the docudrama film "The Invisibles" (2017, 1 hour 50 minutes, biography/drama/history, German with English subtitles, not rated) on Wednesday, April 22, at 1:30 p.m. in the Clubhouse II auditorium.

While Nazi propaganda minister Josef Goebbels famously declared Berlin "free of Jews" in 1943, 1,700 managed to survive in the Nazi capital. Claus Raffe's gripping film traces the stories of four real-life survivors who learned to hide in plain sight. "The Invisibles" is a testament to the resourcefulness, willpower and sheer chance needed to survive against incredible odds.

A discussion follows the film. The cost to attend is \$8 (checks only, payable to JRLW) and sign-up is available at the Clubhouse I E&R office beginning Tuesday, March 24, at 8:30 a.m. in the Clubhouse I E&R office. All residents are welcome.



PLEASE, NO CASH

The E&R offices in Clubhouse I and II do not accept cash payment for programs or activities it sponsors. Payment can be made by check payable to LWMC. Or, if \$10 or more, payment can also be made with a credit card (MasterCard, Visa or Discover). When paying for programs or events sponsored by Leisure World clubs and organizations, payment can only be made by check, payable to that club or organization.

Experienced. Vetted. Approved.



"I have always supported the Sitting Judge principle for the election of Circuit Court Judges. That principle ensures integrity, independence, and excellence in our system of justice. I urge you to support the Sitting judges on June 2nd."

— MARYLAND ATTORNEY GENERAL BRIAN FROSH

JUDGE
CHRISTOPHER C.
FOGLEMAN

JUDGE
DAVID A.
BOYNTON

JUDGE
BIBI M.
BERRY

JUDGE
MICHAEL
McAULIFFE

VOTE FOR YOUR SITTING MONTGOMERY COUNTY CIRCUIT COURT JUDGES

PRIMARY VOTING DAY IS JUNE 2ND

To request an absentee ballot, go to www.elections.maryland.gov

www.electsittingjudgesmcs.com

[f/ElectSittingJudgesMontgomeryCounty](https://www.facebook.com/ElectSittingJudgesMontgomeryCounty)

BY AUTHORITY OF ELECT SITTING JUDGES MONTGOMERY COUNTY SLATE, NANCY HOSFORD, TREASURER.

HEALTH & Fitness

■ Cannabis 101 Club

Club Helps Register Residents with Maryland Medical Cannabis Commission

by Carminetta Verner

The Cannabis 101 Club is initiating a program to register residents with the Maryland Medical Cannabis Commission (MMCC) on an on-going basis, since the Club is limited to registering a set number of residents on any given day.

To facilitate this new process, interested residents must contact (Lwcan101@gmail.com) with their name, phone number and email address. The Club will send



these residents a MMCC pre-registration form to complete and will set up an appointment with them.

In addition to the information required on the form, residents need the following documents to complete the registration process:

- unexpired driver's license or MVA ID card with their current address
- a recent photograph; the Club will take your photo and upload it to the MMCC on the day you register

The MMCC charges \$50 for a Maryland Medical Cannabis Patient ID card. Visa and MasterCard are the only credit cards accepted for payment.

Residents whose driver's licenses or MVA ID cards do not have their current address must provide the following:

- U.S. passport or military ID
- Two (2) additional documents, such as a utility, telephone or cable TV bill, MVA registration card or other MMCC acceptable documents (For a full list

of acceptable documents, visit (https://mmcc.maryland.gov/Pages/patients_regisadult.aspx). All documents must be dated within the past 90 days.

Keep in mind that residents have the option of registering on their own at (mmcc.maryland.gov). Since many residents are not computer savvy, the Club is providing this service to assist them.

For questions, contact Carminetta Verner at (630-699-1629) after 10 a.m.

MedStar

► from page 1

COVID-19.

"You should not delay seeking care because you are concerned about exposure to others who are sick," states the letter dated March 12. "If you are not feeling well, MedStar eVisit is a convenient, no-cost way for you to speak with a healthcare provider without leaving home."

eVisit providers are available 24 hours a day, seven days a week.

To have an e-Visit, download the MedStar eVisit app from your iOS or Android device in the Apple Store or visit (MedStarHealth.org/eVisit). When you get to the payment screen, enter the coupon code LWORLD to receive your visit at no cost.

To learn more about the coronavirus, visit (MedStarHealth.org/COVID-19).

A copy of MedStar's letter to residents is available at (residents.lwmc.com)> Your Community> Community News. Look for the "MedStar Health Letter to Residents on COVID-19" headline.

Register for Senior Call Check Program

Any resident who is 65 or older and would like someone to check up on him or her can apply to receive free, daily phone calls through the Maryland Department of Aging's Senior Call Check Program.

Residents can register for the program Monday through Friday from 8 a.m.-5 p.m. and Saturday from 9 a.m.-3 p.m. by calling (1-866-502-0560), or online at (aging.maryland.gov).

The daily calls include messages and updates regarding COVID-19 (coronavirus) and helpful resources for seniors.

— Leisure World News

■ Lions' Vision Support Group

April 8: Orientation Specialist Discusses Metro Services

by Larry Cohen

The Lions' Vision Support Group is definitely 'springing ahead' with great programs for the spring.

The Group's meeting on Wednesday, April 8, at 1 p.m. in Clubhouse I will feature Brigid Doherty, Metro System orientation specialist for the Office of Eligibility Certification and Outreach Department of Access Services.

Doherty will inform the Group about all metro services and how people with impaired or low vision can make these services work for them.

In May, the Group welcomes Denise Schuler from the Maryland Technology Assistance Program. This state program is similar to a library that is dedicated to assistive technology for blind and handicapped residents of Maryland.

And in June, the Group presents optometrist Dr. Belinda Weinstein. Weinstein is a protégé of Dr. Suleiman Alibhai of Wilmer Eye Hospital, National Eye Institute and Prevention of Blindness Society. She will talk about the best way to protect eyes from the sun. Weinstein will also answer questions on the eye and eyewear for low vision issues.

Training Sessions

For more information about Lions' Vision Support Group, contact Larry Cohen at (908-770-9111) or (ToPops@aol.com) or (BobbyBobo@gmail.com).



■ Alzheimer's Support Group

April 15: Speaker Shares Financial Expertise with Caregivers

by Sunny Grunder

Alzheimer's caregivers need help, not just in the physical care of a loved one, but also in understanding the legal and financial issues that need to be attended to early in the stages of the disease.

On Wednesday, April 15, the Alzheimer's Support Group hosts a financial expert who will discuss the problems caregivers encounter when dealing with a loved one's legal and financial situations. The meeting is at 3 p.m. in The Inter-Faith Chapel, and anyone caring for someone who has Alzheimer's is invited to attend.

Attendees will benefit from this relevant and informative presentation. Bring your questions. For further information, call Sunny at (301-438-2446) or Sheila at (240-844-3608).

■ Stroke Support Group

April 21: 'Love Letters to Our Children and Grandchildren'

The Stroke Support Group hosts an educational program, "Love Letters to Our Children and Grandchildren," on Tuesday, April 21, from 1-2 p.m. in Clubhouse II, followed by a stroke support discussion group from 2-3 p.m.

Presented by Paulette Robinson, PhD., from the book "From Age-ing to Sage-ing: A Profound New Vision to Growing Older" by Rabbi Zalman Schachter-Shalomi and Ronald S. Miller, the program explores writing family members meaningful memories of our interactions with them and what they mean to us.

— Amy Boltz

■ FISH (Friends in Sickness and Health)

FISH Lends Donated Assistive Equipment

by Beth Leanza

FISH comprises a group of volunteers who accept donations of assistive equipment, such as wheelchairs, walkers, commodes and shower chairs (tub stools), and then lend them to residents indefinitely.

Other donated items, such as safety rails for the bathroom, are available for anyone – a resident's health aid can use them for other clients, for example.

Items that are available to all are located in the front area of the FISH office in Clubhouse II.

FISH no longer accepts foot braces, oxygen tank tubes, diabetic equipment and CPAP machines. Also, do not donate household items, and do not leave anything outside the FISH cage.

FISH is not a 501(c)(3), so donations are not tax deductible; FISH and its patrons are grateful for the items they receive.

FISH Office

The FISH office is open Monday to Friday from 10 a.m.-4 p.m. The office is available by calling (301-598-1345); residents are urged to call first before stopping by.

Completely staffed by volunteers, FISH members do

not usually have any medical training. FISH urges anyone with questions to speak to a therapist or home health aide. Volunteers do strive to make sure the equipment is safe to use.

FISH is always looking for new members so if interested, contact Beth at (301-598-4569). FISH suggests new volunteers complete a training/orientation session with a current volunteer.

Other Collections

Some organizations such as Kiwanis and Lions have collection boxes in the FISH office. Kiwanis helps Ronald McDonald House by collecting can tabs. The Lions collect eyeglasses and hearing aids. To start a collection, even for a short time, contact FISH. Also, be sure to include (on the collection box) your contact information.

FISH also accepts cardboard tubes and calendars. While they are meant for a local elementary school's art projects, FISH welcomes anyone to take them.

Lost and Found

The FISH office also houses found items. Come by the office or call (301-598-1320) after hours and an E&R staff member will assist you.

Special Sale - Buy 1 Meal and get the 2nd Meal Half OFF!

CHEF ON THE RUN®

301-990-7727

WE DELIVER!

EXPANDED MENU

A HEALTHY ALTERNATIVE WITH OUR NEW MENU ITEMS.
Too Tired to Cook? No Time to Cook? Let us prepare delicious meals for you. We deliver fresh food daily, very reasonable rates. No boring food. Only food with a bit of love sprinkled in. Gift certificates are now available. Ask for Dina.

Errand, shopping and companionship services also available!

Foot & Ankle Specialists

of the Mid-Atlantic

Now the preferred podiatry practice at MedStar Health at Leisure World

End your toes woes!

Walk pain-free!

Visit Dr. K at MedStar Health at Leisure World,
3305 N. Leisure World Blvd.,
for treatment of your toes, heels, ankles and feet.

Dr. Freedman & Dr. Kathrotiya-Mago
Leisure World Plaza Professional Building
3801 International Dr. • Suite 204 • Silver Spring, MD 20906
www.footandankle-usa.com

Call today: (301) 598-0130

Health & Fitness In Brief

Al-Anon Meeting: Al-Anon (for family and friends affected by alcoholism) meets Fridays at 2 p.m. at Our Lady of Grace Church Parish Center, near Leisure World. Enter through the back door (15661 Norbeck Blvd., Silver Spring). For more information, call Bridget at (301-598-3043).

Alcoholics Anonymous (AA): Newcomers welcome. (If outside Leisure World, check in at the main gate.) Meetings are Mondays at noon (Step Meeting) and Thursdays at 6 p.m. (Big Book) in Clubhouse I. For questions, contact Laurie at (240-558-4454).

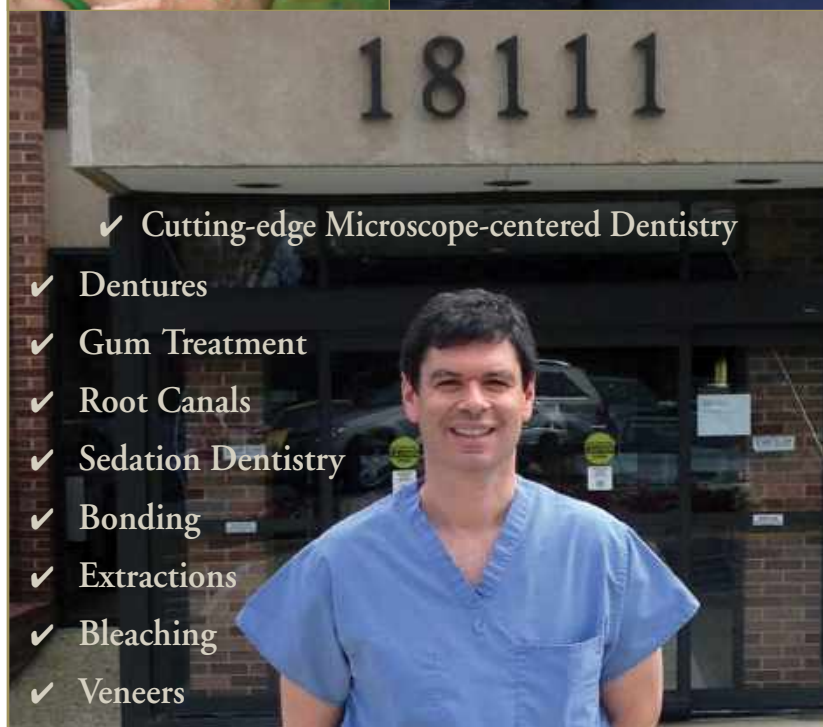
Bereavement Support Group: If your spouse or long-term partner died in the recent past, you may be eligible to participate in a twice-monthly bereavement support group that meets every other Tuesday, 2-3:30 p.m., in the conference room at MedStar Health, 3305 N. Leisure World Blvd. CaringMatters sponsors group meetings. Registration and a phone conversation with Jim Rossi, director of adult bereavement at CaringMatters, is required before attending. If interested, please call Jim at (301-990-0854).

Fitness Center: One of the Fitness Center's personal trainers leads a free orientation tour of the Fitness Center on

the second Tuesday of every month at 2 p.m. Learn how to use the equipment and facilities. Registration is not required.

Memory Café: The Memory Café meets the last Thursday of every month from 2-3:30 p.m. in Clubhouse I. The program provides social engagement for individuals living with early stage memory loss. Registration is required. For more information, call the manager at (240-428-1342) or the National Alzheimer's Association at (1-800-272-3900) or (TTY: 1-866-403-3073) or visit (www.alz.org).

Living Better with Parkinson's: The Living Better with Parkinson's support group was created under the auspices of the Parkinson Foundation of the National Capital Area to provide support to patients suffering from Parkinson's disease (PD) and their families and caregivers. The group meets the second Tuesday of the month at 3 p.m. in Clubhouse II. Usually there is a presentation by a speaker with knowledge about PD, physical therapy or some other related subject, followed by a period of Q&A. There are no memberships or fees to pay, and the meetings are open to anyone who may be interested. Questions? Contact Ray Weil at (301-598-3447) or (raywwjr@hotmail.com).



We Cater to Cowards • Same-day Emergencies • Evening Hours
Will File Forms for All PPO Insurance Carriers

Look and feel your best!



**COMPREHENSIVE FAMILY
& COSMETIC DENTISTRY**

\$50 off your first visit

Not valid with third party plans, new patients only.

Located at MedStar Montgomery Medical Center
18111 Prince Philip Dr.
Suite T-17
Olney, MD 20832

T: 301-774-7887 • www.OlneyDental.com

Free Blood Pressure Testing Unavailable:

As a precaution against COVID-19 (coronavirus), blood pressure testing is unavailable until further notice.



THE KAREN ROLLINGS TEAM

301-924-8200

www.TheKarenRollingsTeam.com



Karen Rollings



Sherry Felice



Kathy Workman

3410 N High St
Olney, MD 20832
301-260-7700



888-860-7369



Recent Solds "Around the World"!

Address	Subdivision	Type	Beds	Baths	Asked	Got	Subsidy
15100 Interlachen Dr #4-1016	THE GREENS	Unit/Flat/Apartment	1	1	\$129,900	\$125,000	\$0
3310 N Leisure World Blvd #811-6	FAIRWAYS NORTH	Unit/Flat/Apartment	2	2	\$210,000	\$213,000	\$0
2901 S Leisure World Blvd #126	CREEKSIDE	Unit/Flat/Apartment	3	2.5	\$530,000	\$550,000	\$0
3310 N Leisure World Blvd #104	FAIRWAYS NORTH	Unit/Flat/Apartment	3	2.5	\$339,900	\$330,000	\$0
3005 S Leisure World Blvd #615	TURNBERRY COURTS	Unit/Flat/Apartment	2	2	\$319,000	\$319,000	\$0
14707 Lindsey Ln #223B	ROSSMOOR MUTUAL #10	Twin/Semi-Detached	3	2	\$359,000	\$376,000	\$0
3200 N Leisure World Blvd #709	VANTAGE POINT EAST	Unit/Flat/Apartment	2	2	\$294,900	\$292,500	\$0
15100 Interlachen Dr #4-707	THE GREENS	Unit/Flat/Apartment	3	2.5	\$292,000	\$292,000	\$0
3517 S Leisure Wld Blvd #28-A	MONTGOMERY MUTUAL COOP	Row/Townhouse	2	1.5	\$158,700	\$150,000	\$0
15101 Interlachen Dr #1-223	THE GREENS	Unit/Flat/Apartment	2	2	\$219,500	\$215,000	\$0
3210 N Leisure World Blvd #907	VANTAGE POINT WEST	Unit/Flat/Apartment	2	2	\$294,900	\$285,000	\$0
3310 N Leisure World Blvd #6-130	FAIRWAYS NORTH	Unit/Flat/Apartment	2	2	\$195,000	\$195,000	\$0
15101 Interlachen Dr #1-215	THE GREENS	Unit/Flat/Apartment	2	2	\$225,000	\$225,000	\$0
14809 Pennfield Cir #403	VILLA CORTESE	Unit/Flat/Apartment	3	2	\$339,000	\$330,000	\$0
3 Vantage Hill Ct #B	ROSSMOOR MUTUAL #14	Twin/Semi-Detached	2	2	\$389,900	\$370,000	\$0
3705 Bethnal Way #33B	ROSSMOOR MUTUAL #13	Twin/Semi-Detached	3	2	\$358,900	\$358,900	\$2,000
3518 Fiske Ter #151 A	ROSSMOOR MUTUAL #9	Twin/Semi-Detached	3	2	\$334,500	\$315,000	\$0
3005 S Leisure World Blvd #123	TURNBERRY COURTS	Unit/Flat/Apartment	2	2	\$199,900	\$190,000	\$0
15107 Interlachen Dr #2-825-826	THE GREENS	Unit/Flat/Apartment	2	3	\$289,900	\$279,900	\$0



ACTIVE!!!

15115 Interlachen Drive, #3-623

3 Beds, 2.5 Baths. Balcony w/views of park & woods! Fresh paint & new carpet!



ACTIVE!!!

15310 Beaverbrook Court, #89-1B

1 Bedroom, 1 Bath Rental with patio! All utilities included & 1 reserved parking space!



ACTIVE!!!

15107 Interlachen Drive, #2-906

Warm and inviting 2 bedroom, 2 bath condo with enclosed balcony & golf course views!

Need New Carpet?

Serving Montgomery County for 30 years! We are the company for all your flooring needs. Carpeting, Hardwood, Laminate, Ceramic, Marble, Commercial, Residential. We do it all! We carry major brand names in carpeting and hard surface flooring.

Trust our experience and knowledge of the industry.

301-924-7331

18167 Village Center Drive
Olney, MD 20832
(in the Olney Village Center)

www.carpetandvacuumexpo.com

CARPET & VACUUM
EXPO

\$100
off installation!
301-924-7331

only for purchases over \$1000. Offer not valid with any other offers.

CLUBS, GROUPS & Organizations

Checking on the Status of an Event or Meeting

by Leisure World News

Many clubs, groups and organizations are canceling or postponing their upcoming meetings and programs due to COVID-19 (coronavirus).

Residents are encouraged to check on the status of an event before attending by:

- checking channel 972
- contacting the club, group or organization directly.

For a list of contacts, sign in to (residents.lwmc.com) and in the Your Community dropdown, click on Clubs and Organizations Information Pages, or stop by either clubhouse E&R office.

Group leaders are asked to notify members and appropriate management departments of cancellations. Channel 972 and (residents.lwmc.com) will keep calendars as updated as possible.

■ Edmonson Historical Society

Group Postpones March Kickoff Meeting

by Juanita Sealy-Williams and Dianne Bradley

The Edmonson Historical Society's meeting scheduled for Monday, March 30, has been postponed. More details will be forthcoming.

About the Society

The Edmonson Historical Society is dedicated to preserving the rich history of the Edmonson family. Paul Edmonson, a freed Black man, whose wife and 14 children were enslaved in Washington, D.C. and Montgomery County, owned a 40 acre farm on the land that is now Mutuels 15, 16 and 18 in Leisure World.

His family's rich history includes escaping from slavery, purchasing freedom and traveling the country with famous abolitionists such as Frederick Douglass and Harriett Beecher Stowe. The family's legacy looms so large that a room in Clubhouse II was recently named the Edmonson Room!

The Society's previous events have included exploring the historical facets of the area in which Leisure World resides. Members have researched and shared how surrounding areas have continuously progressed,



A bronze statue in Alexandria, Virginia, commemorates the Edmonson sisters. Photo courtesy (commons.wikimedia.org)

from slavery, abolition, the Underground Railroad and emancipation to segregation, Jim Crow, civil rights, integration and a thriving commerce.

The Society has also produced a video of interviews with people connected to the Edmonson family and the nearby historical town of Norbeck. In May 2019, the Society traveled to Alexandria, Virginia, to see the sculpture of the two Edmonson sisters. It has also explored the role of the Quakers during this time period and their integral part in the history of the vicinity.

■ Computer Center Inc.

■ League of Women Voters

March 31: Receive Help with Online Census

by Maxine Lewack

On Tuesday, March 31, the Rossmore Chapter of The League of Women Voters partners with the Computer Center Inc. to help residents answer the U.S. census online.

The help sessions are from 10 a.m.-noon, and from 6:30-8:30 p.m. in the Computer Learning Center in Clubhouse II.

Specifically, they will help residents sign into the program, and will then step away to allow residents to fill out the form in private. If there is enough demand, another time may be scheduled as well. Be sure to bring your letter or postcard from the Census Bureau, which has your sign-in code.

■ Kiwanis Club of Leisure World

Weekly Monday Night Bingo Suspended

by Jack Colvis

Weekly Monday night bingo is suspended until Monday, April 6, when it is expected to resume from 7-9 p.m. in the Clubhouse I Crystal Ballroom.

The suspension is entirely voluntary and in conformity with both the urging of Gov. Larry Hogan and the Centers for Disease Control and Prevention regarding the gathering of people while COVID-19 (coronavirus) spreads.

Should the spread of COVID-19 continue to linger into April, the suspension will be extended further, and notification will be given.



■ Garden and Environmental Club

Club Postpones Annual Spring Tea

The Garden and Environmental Club has decided to postpone its annual spring tea that was scheduled for Tuesday, March 24. The Club is hopeful that it can be rescheduled in the fall.

Members are disappointed that the popular spring event has to be canceled but understand the necessity of following recommendations concerning the spread of coronavirus.

The next regular meeting on insects and pollinators is scheduled for Monday, April 13. The status of this meeting has not been decided.

— Jean DeSchriver

Let's Green Up Leisure World

by Janice McLean

With all their awesome attributes, trees and the planting of trees has become a symbol of efforts to address climate change.

To this end, LW Green is launching a new initiative, "Let's Green Up Leisure World." LW Green envisions a community-wide effort to plant more native canopy trees, bringing great benefits to residents.

This initiative will be introduced in-depth at the Group's next meeting on Wednesday, March 25, at 2 p.m. in Clubhouse I, at which guest expert Caroline Taylor, executive director of the Montgomery Countryside Alliance, will discuss the benefits of planting trees. She brings her

extensive knowledge and experience in establishing healthy, diverse native forests and ecosystems in urban, suburban and rural areas.

Here are some of the benefits of planting trees:

- Trees eat carbon. "The average amount of carbon sequestered by one tree is 88 pounds per year. (In contrast, the average American is responsible for emitting about 44,000 pounds of carbon annually)," according to the Center for Urban Research, a branch of the U.S. Forestry Service.
- Trees absorb carbon dioxide.

One acre of trees annually consumes the amount of carbon dioxide equivalent to that produced by driving an average car for 26,000 miles, according to chemistry expert Dr. Anne Marie Helmenstine.

- Trees release oxygen. "A mature leafy tree produces as much oxygen in a season as 10 people inhale in a year," according to Helmenstine.

About LW Green

LW Green is a group of residents striving to be better stewards of the environment through education and advocacy. All residents are invited to join in this effort.

For more information, visit (www.lw-green.org) or contact Janice McLean at (301-847-9169) or (janicewmclean@gmail.com).

Residents don't have to be a member to attend LW Green meetings, but if they'd like to join, they can get a membership form via the Group's website or at one of its meetings. Dues are \$12 per person and \$20 per couple.

Pre-cycling Tip

Spring is coming, and that means farmers' markets will be popping up soon. Farmers will take customers' egg cartons and berry baskets for reuse.

Plus, patronizing farmers' markets means fruits and vegetables you buy won't have those unsightly identity stickers.

■ Center for Lifelong Learning (CLL)

■ Computer Center Inc.

■ Jewish Residents of Leisure World

April 26: Good Deeds Day

by Fred Shapiro

Leisure World joins the Greater Washington community on Sunday, April 26, to participate in Good Deeds Day, a day of volunteering.

Part of Good Deeds Day at Leisure World includes Tech Day, an event at which students from Jewish Day School and their friends from local high schools

will assist residents one-on-one with their personal technology devices – laptops, tablets and smartphones – as well as the Computer Learning Center's computers.

Tech Day is from 11 a.m.-1 p.m. (the first session is from 11 a.m.-noon, and the second is from noon-1 p.m.) in Clubhouse II and is co-sponsored by the Center for Lifelong Learning (CLL) and the Computer Learning Center.

Residents who would like to participate are asked to sign up beginning Tuesday, March 24, at 8:30 a.m. in the Clubhouse II E&R office. Indicate on the

sign-in sheet the technology for which you need assistance and the session for which you will be available.

Food Collection

At the same time, members of the Jewish Residents of Leisure World (JRLW) will be collecting food and donations for Manna Food Center from 11 a.m.-2:30 p.m. in the Clubhouse I lobby.

Volunteers are needed to man the table for either or both of the two shifts: 11 a.m.-12:30 p.m. and 12:30-2:30 p.m. JRLW members who are motivated to volunteer should contact Kitty Atkin at (301-704-7187) to be assigned to a shift.

JRLW would like to have at least four members per shift.

Cans and cartons of food, which do not exceed the use-by date on the container, will be accepted. In addition, cash or check donations, payable to Manna Food Center, will be collected. So check your cabinets and find a few items that



At left, local students help residents with their technology devices at a past Tech Day. At right, Jerry Gordon, Lyle Wolinsky and Jerry Weiss collect non-perishable foods at the 2019 Good Deeds Day. Photos by Fred Shapiro

you can bring to Clubhouse I on that day.

And join these groups and

other residents as they participate in this communitywide Good Deeds Day.



YOUR FRIENDLY MOBILE BIKE SHOP

Bicycle Services at your home by appointment

Tune-ups & Repairs, Convenient, Experienced, Insured

Offering brake service for "Rollator Walkers"

Call or text Carl – 301-310-6765

www.bikewerksolney.com

Award Winners Submit Photos for Final Competition of the Year

by Fred Shapiro

Members who've won awards in the Club's September 2019 through March 2020 photo competitions are asked to submit their best photos for the last competition of the year, to be held on Tuesday, April 28, at 7 p.m. in Clubhouse II.

Award winners may enter up to six images – three prints and three digitals. Digital entries should be emailed as attachments to (RossmoorLW@gmail.com), and include a list of the prints.

The judge for the evening is the very experienced painter and photographer Ron Ames. Ames, who retired in 2013, was the owner of Art Nous Faux, a mural and decorative painting business serving Washington, D.C., and Maryland.

Though originally trained as a painter, as a necessity of this business, he documented his work

through photography. He graduated from the Digital Camera Mastery program and is also a graduate of the master's program of the iPhone Photo Academy and the iPhone Editing Academy.

Later that same year, Ames became a member of the Montgomery County Camera Club, is now its vice president, and has been juried in many local exhibitions since then. His photographs are in private homes in England, Latvia, Georgia, Alabama and Maryland.

His interests are photo impressionism, abstract, landscape and close ups. He shoots with a Nikon D200 and uses two lenses: a 70-300 mm and an 18-70 mm.

As a judge, he prefers to see himself as a helpful educator, a photographer with experience and one who continues to gain experience from other photographers. He looks for interesting angles in the basic four components of photography: subject,

composition, light and color. The fifth category, creativity, is that which makes the subject different and grabs his attention, and then leads him to explore the nuances of the whole.

Next Meeting

At the Club meeting on Tuesday, April 14, at 7 p.m., Jon Fife will provide attendees with the schedule of competitions for the coming year and explain the exact definitions for each category. His explanation will clarify which types of subjects are acceptable and not acceptable for each competition.

Membership

Residents interested in joining the Club can choose from two levels of membership.

Members who expect to compete in the monthly competitions pay dues of \$25 for the year.



Performers dance at a recent Friends of India Association event. Photo-taking opportunities abound at Leisure World. Photo by Fred Shapiro, Leisure World News

Residents who wish to join the Club to learn more about photography but are not interested in competing pay dues of \$15.

Mail checks for dues to Woody Shields at (Rossmoor Camera Club, 3200 N. Leisure World Blvd., Apt. 817, Silver Spring, MD 20906). Visit the Club's website at (www.rossmoorcameraclub.com).



HOME SERVICES

Need help on your home improvement projects?

Cabinet Makeover

Get the look of a new kitchen in 3-5 days.



Home Organization

Let us help you maximize your space.



Let us do it for you.

Call for your free in-home consultation

800-HOME DEPOT (466-3337)

or visit homedepot.com/services

Get started today. ✓ Backed by The Home Depot ✓ Financing Options ✓ Local, Licensed and Insured Professionals

Home Depot local Service Providers are background checked, insured, licensed and/or registered. License or registration numbers held by or on behalf of Home Depot U.S.A., Inc. are available at homedepot.com/licensenumbers or at the Special Services Desk in The Home Depot store. State specific licensing information includes: AL 51289, 1924; AK 25084; AZ ROC252435, ROC092581; AR 0228160520; CA 602331; CT HIC.533772; DC 420214000109, 410517000372; FL CRC046858, CGC1514813; GA RBC0005730, GCC0005540; HI CT-22120; ID RCE-19683; IA C091302; LA 43960, 557308, 883162; MD 85434, 42144; MA 112785, CS-107774; MI 2101089942, 2102119069; MN BC147263; MS 22222-MC; MT 37730; NE 26085; NV 38686; NJ 13VH09277500; NM 86302; NC 31521; ND 29073; OR 95843; The Home Depot U.S.A., Inc. is a Registered General Contractor in Rhode Island and its Registration Number is 9480; SC GLG110120; TN 47781; UT 286936-5501; VA 2705-068841; WA HOMED088RH; WV WV036104; WI 1046796. ©2020 Home Depot Product Authority, LLC. All rights reserved.

Artists are ‘on the Fence’

by Ann Bolt

Visit Judy Kirkland’s solo exhibit in Clubhouse II and you’ll see that many of her imaginings transfer well to acrylic paint. She’s captured a pizza man twirling dough, her father weighing the merits of an apple and children romping through life.

The exhibit, which may cause you to look more closely at life’s everyday moments, remains through April. Stop by and sign her comment book.

Open Studio Exhibit

The Open Studio’s fences themed exhibit in Clubhouse I, which runs through April, includes a non-controversial take on fences and walls. Maria Clark treats art lovers to a bit of whimsy, while Angela Chang shows that the grass really is greener on the other side of the fence.

Ann Bolt’s fence needs more repair than nostalgia, and recent member Andrea Burgard portrays her deft skill with ink. Other artists exhibiting in the fences themed exhibit include Laurie Burdick, Patty Elton, Nancy Albrecht and Alex Michaels.

The theme for Open Studio’s next exhibit is rain. Paintings of rainy days,

reflections, puddles, raindrops and any interpretation of rain are due by Friday, May 1, at the art studio.

Other Exhibits

The general exhibit in Clubhouse I features the tiny and the tremendous. Alex Michaels presents a hummingbird while Bill Bohrer gives us a whole sunset.

Eighteen artists’ paintings grace the walls and include a gathering of herons, giraffes, fluffy white dogs and a jellyfish in pencil that must have taken hours to do. Other subjects painted include a closed café in Tuscany, ladies in timeless attire, portraits, big, bold flowers and abstracts.

Artists include Maria Clark, Patty Elton, Judy Kirkland, Marvin Sirkis, Donna Leonard, Ann Bolt, Nettie Geier, Marilyn Davis, Jeanette Shampain, Paul Ganz, Patty Marx, Selma Ahmed, Deidre Williams and the mother-daughter team of Laurie Burdick and Lindsey Green.

The exhibit at Signal Financial Federal Credit Union in the Administration Building features “Faces and Places” for the month of March. Steve Irish, Paul Ganz, Kathleen Allen, Donna Leonard, Ann



At left, credit union branch manager Peter Gray, left, and Ann Bolt hang a photo for the credit union’s “Faces and Places” exhibit. Photo by James Fleet. At right, a giraffe painting by Donna Leonard. Photo by Ann Bolt



Bolt, Patty Elton and Faith Chin are showing their art. The credit union generously offers a prize for the favorite painting determined by walk-in voters. Support your fellow artists and neighbors and meet the new branch manager, Peter Gray.

Possible Cancellations

Due to coronavirus, the best-laid plans may be disrupted. Rossmoor Art Guild invites interested resi-

dents and non-residents to sign up for email notification on a sheet posted in the foyer of the Art studio.

Any cancellations and changes can be sent to interested parties via email. In the meantime, artists can still work at home by drawing figures from TV shows, sketching a view from a window, sketching household scenes and objects and just looking carefully at their environment.

CYCLE WORKS LLC

ELECTRIC BIKES AND UPGRADE KITS

- Repairs and Tune-ups for Bikes and Trikes
- Vintage Restorations
- Mobile Bicycle Services
- Convert Your Bike With a Hill Topper Kit
- All Work Warrantied

HILL Topper

New and Retro E-Bikes, E-Bike Conversion Kits

Evo Cycle Works LLC
Vic Caldarola
13815 Arctic Ave · Rockville MD · 20853
www.Evocycleworks.com

CALL (240) 602-8752

Read Our Reviews

Rediscover Our Assisted Living

For almost two decades, Marian Assisted Living has provided focused, personalized senior care. And our award-winning community continues with this mission. Nestled in the heart of the vibrant Brookeville neighborhood of the Reserves at Manor Oaks, we’re here for today’s needs and tomorrow’s. **Learn more, call or visit us today.**

New Neighbors. Same Neighborhood.

Marian Assisted Living
Minutes from Leisure World
19109 Georgia Avenue
Olney/Brookeville
301-570-3190

VICTORY HOUSING

Victory Housing Is A Non-Profit Organization Serving Seniors for More Than 30 Years

Exclusive Leisure World Special!

VictoryHousing.org

Library Closed, but New Books Have Arrived

by Anthony Magri

The library is located in Clubhouse I. Recently purchased and donated books available for checkout include:

“Mr. Nobody” by Catharine Steadman; “Henry, Himself” by Stewart O’Nan; “Hindsight” by Iris Johansen; “Long Bright River” by Liz Moore; “Stolen” by Richard Bell; “How Not To Die Alone” by Richard Roper; “The Ambassador’s Daughter” by Pam Jenoff; “The Lager Queen of Minnesota” by J. Ryan Stradal; “The Flatshare” by Beth O’Leary; “America’s Reluctant Prince: The Life of John F. Kennedy Jr.” by Steven M. Gillon; “The Missing American” by Kwei Quartey; “Heartland: A Memoir of Working Hard and Being Broke in the Richest Country on Earth” by Sarah Smarsh; “The Starless Sea”

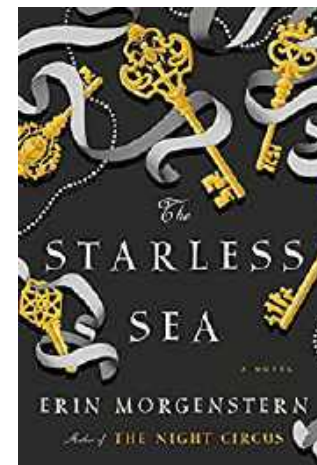
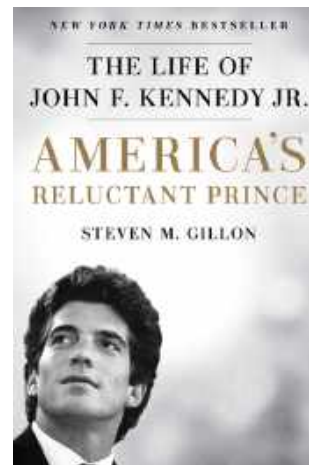
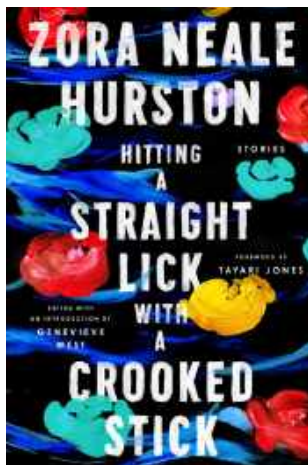
by Erin Morgenstern; “Hitting A Straight Lick with a Crooked Stick: Stories from the Harlem Renaissance” by Zora Neale Hurston; and “The Water Dancer” by Ta-Nehisi Coates.

Registering at the library allows you to check out books. To register, simply stop by the library and present your Leisure World ID.

About the Library

The library features “Books of the Month” throughout the year. March’s choice is “Books by Irish Authors and Subjects” Look for the display on the top shelf of the island across from the greeting card display. Residents may check out these books as well.

Each month, an author, event or theme will be highlighted in this area with the books. Residents who have



a suggestion for a display should place it in the suggestion box located under the front window.

The library has reference books, magazines and newspapers throughout the year. Stop by the library and shop for all occasion greeting cards. Remember that all puzzles must be returned to the library when completed.

As of March 16, all audio books are checked in and out like regular books. They have

been bar-coded and added to the library’s circulation system.

For more information about the Rossmoor Library Guild, contact Tony Magri at (tonyitalian1951@comcast.net).

NOTE: As a precaution against COVID-19 (coronavirus), the library is closed for the remainder of March. Residents may still return books via the deposit slot located to the right of the library's entrance.

AUTO BODY

Rockville Central

Just off East Gude Drive

301-424-3500

**FREE ESTIMATES
IF YOU CAN'T COME TO US
WE WILL COME TO YOU**

SPECIAL OFFER

- ◆ Paintless Dent Removal from \$75
- ◆ Free Pick up & Drop Off
- ◆ Free Towing to Shop
- ◆ Free Touch Up Paint
- ◆ Lifetime Warranty on All Repairs
- ◆ Special Discounts for LW Residents

**We Happily Handle All Insurance
Claims for You**

Ask for Richard or Tony

■ Fun and Fancy Theatre Group

Fun and Fancy Cancels Meetings and Shows

by Hannette Allen

Fun and Fancy Theatre Group has canceled its meetings and shows until further notice.

March Show

The Irish show was a big hit; it was a privilege to direct performers of this caliber. The singing,

dancing, piano playing and reading of jokes and bits of Irish history were outstanding.

Fun and Fancy’s tech crew outdid themselves, showing their creativity with lights and sound. The onstage atmosphere at “McFee’s Pub” was warm and loving, and the singing audience left with their Irish eyes smiling.

DRIVERS MUST YIELD THE RIGHT-OF-WAY TO EMERGENCY VEHICLES

Per State Law: “Authorized emergency vehicles, such as police cars, ambulances and fire engines, have the right-of-way when they are giving a signal, either audible (siren) or visual (flashing light).”

On hearing or seeing such vehicle approaching, you must immediately drive to the curb and stop. Once the emergency vehicle has passed, you may proceed back onto the roadway. Failure to follow this law may possibly delay life saving services to the call.

■ League of Women Voters

Gearing Up for the Census and Primary Election

by Maxine Lewack

The help session for residents for online census-taking that was scheduled for Tuesday, March 31, at the Computer Learning Center has been canceled.

Forum

The Board of Education Candidates' Forum is held on Monday, March 30, in Carver Auditorium at Montgomery County Public Schools, located 859 Hungerford Drive in Rockville.

Doors open at 6 p.m., with time to mingle with the candidates. Conversations and a question and answer period will last until 9 p.m. The evening promises to be lively and informative.



Voter Registration

The last day to register (or change your name or your address if you've recently moved, or party affiliation) is Tuesday, April 7. Voter registration forms are available at libraries, schools, social service agencies and the Montgomery County Board of Elections, located at 18753 North Frederick Avenue, Suite 210, in Gaithersburg.

To register online or to obtain a form, visit (elections.maryland.gov). Registered voters will receive a sample ballot in the mail before the primary election indicating their polling place.

■ National Active and Retired Federal Employees (NARFE) Chapter 1143

March 23: Meeting Canceled

by John Moens

The Chapter planned to have author, political analyst and NARFE official Paul Schwartz as the speaker at the Chapter's Monday, March 23, membership meeting, but the meeting has been canceled due to concerns about coronavirus.



February Meeting

Thanks to all the attendees at the February meeting for braving the bitter cold, getting up early and spreading the word on the last minute schedule change. Their reward was to hear a great speaker, Councilman Will Jawando.

He and his accompanying staff member, Pam Luckett, are also great listeners, recording concerns raised in the question and answer period. One attendee thanked Jawando for following up on an issue raised during his previous appearance.

Most of the questions at this meeting focused on traffic issues. In response to an increase in pedestrian fatalities, the county has launched the Vision Zero Action Campaign, an effort to educate drivers, pedestrians and bicyclists.

SPRING OPEN HOUSE

Wednesday, March 25th
1:00 - 3:00 PM



FIVE STAR
Premier
RESIDENCES
OF CHEVY CHASE

8100 Connecticut Ave.
Chevy Chase, MD 20815

301-907-8895

Join us for a taste of spring! Stop by to enjoy a variety of hors d'oeuvres and desserts prepared by our Executive Chef and see what's new at **Premier Residences of Chevy Chase.**

Kindly RSVP to jberkman@5ssl.com or 301-907-8895.



www.FiveStarPremier-ChevyChase.com
INDEPENDENT LIVING • ASSISTED LIVING

©2020 Five Star Senior Living



Club Cancels March Events

by Roger Blacklow

The Democratic Club has canceled its March events and some of its April events.

The Club will try to reschedule several of them, including the program featuring Yvette Lewis, the new chairwoman of the Maryland Democratic Party, the documentary movie about voter suppression in 2018, and letter writing parties.

The Club is working with outside groups to see if members can write or text letters from home.

The Club will try to reschedule the judges' forum with Q&A and the board of education forum with Q&A, which was scheduled for Thursday, April 2.

Primary Election

The Maryland primary has been rescheduled for Tuesday, June 2. The races for the Board of Education, which is non-partisan, plus county judges and Congressional District 8 (Rep. Jamie Raskin) are on the ballot. Raskin has several announced challengers.

A voter must be a registered Democrat to vote in the Democratic primary; Inde-

pendents and crossovers are not allowed. The registration deadline is Tuesday, April 7. Early voting starts Thursday, April 16.

Want to register? Get in touch with the Club at (leisureworlddemclub@gmail.com), contact the League of Women Voters or visit the Maryland State Board of Elections online at ([https://](https://elections.maryland.gov/voter_registration/index.html)

elections.maryland.gov/voter_registration/index.html).

Club Information

A good source of information is the "Donkey Dispatch," which is free with Club membership.

To join the Club, mail a check for \$15, payable to the Democratic Club of Leisure World, to (the Democratic Club of Leisure World, PO Box 12374, Silver Spring, MD 20908), or drop it off in the Club's mailbox in the Clubhouse I E&R office.



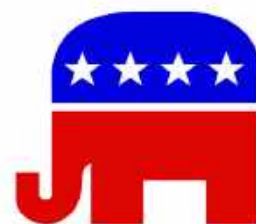
■ Republican Club

April 21: Primary Election Season Winds Up with Meeting

by Fred Seelman

The Republican Club winds up the 2020 primary election season with a program at its regular meeting on Tuesday, April 21, at 7 p.m. in Clubhouse I and working and voting at the Leisure World polling places on Tuesday, June 2.

The Club meeting's program is about the Republicans running for Congress in Maryland's 8th Congressional district, and Club members will be encouraged to stand up and tell the Club about their favorite Republican candidate. Presently, the candidates are Gregory Thomas Coll, Patricia Rogers, Nicholas Gladden, Shelly Skolnick, Michael Yadeta and Bridgette L. Cooper.



Club members are asked to study the records of these candidates to be able to talk about them at the meeting. Check the internet for up-to-date information. Contact Club president Fred Seelman at (fseelman@gmail.com) if you need help finding information. Some candidates may be present at the meeting.

Members can also help the Club by working on election day at one of Leisure World's three voting precincts: Clubhouse I, Clubhouse II or The Inter-Faith Chapel.

Send comments or questions about these or any other Club matters and/or offers to volunteer to Fred at (fseelman@gmail.com) or first vice president Robert Kammer at (301-847-9820).

Join the Club on April 21 for another quality event.

WARNING

Side effects of better hearing may include *greater quality of life and stronger relationships.*

Call today to schedule your appointment!

301.637.7238



Hearing HealthCare, Inc.
Doctors of Audiology

Serving the community since 1996

WHEATON • 3913 Ferrara Dr

ROCKVILLE • 2403 Research Blvd, #100

HearingHealthCareInc.com



BP SERVICE

Carpet & Upholstery Cleaning

Commercial and Residential
Pet Stain Removal, Gum Removal
& Deodorize
We Move and Replace Most Furniture

Houses/Apts/Offices/Churches/Daycares

Benjamin Pena

Office: 301-942-8789 • Cell: 240-505-5213



Cheryl's Organizing Concepts

Help with all aspects of home organizing:

- Managing Paperwork
- Eliminating Clutter
- Packing, Unpacking
- Closets, Kitchens and more

(301) 916-9022

www.CherylsOrganizing.com

\$25 senior discount on first visit for Leisure World residents



Expo and Passover Seder Canceled

by Jonas Weiss

The information expo and panel on aging scheduled for Thursday, March 26, has been canceled. The Seder scheduled for the second night of Passover, Thursday, April 9, has also been canceled.

JRLW Elections

On Monday, April 13, at 7 p.m., elections for officers of the board of directors will be held. Anyone not already nominated but interested in a position should contact Leah Weisman at (301-288-4267).

Brunch

Steve Friedman is the featured speaker at JRLW's brunch on Sunday, April 19, at 10 a.m. in Clubhouse I. He is a tenor who has performed in many musical theater roles and has lectured about Broadway musicals at Leisure World.

Friedman is an internationally recognized Broadway musical historian and has written a best-selling book, "The Ultimate Broadway Musical List Book." He will talk about Jews on Broadway and will provide an interactive experience that may even include a live performance of some Broadway songs.

To attend, mail checks of \$14 (\$18 for non-members), payable to JRLW, to Jerry Gordon at (15311 Beaverbrook Ct., Apt. 3A, Silver Spring, MD 20906). Checks must be received by Monday, April 13.

Other Upcoming Activities

Enjoy your favorite Jewish songs and sing along at the JRLW Music Fest 2020 sponsored by the Charles E. Smith Life Communities on Thursday, April 23, at 7:30 p.m. in the Clubhouse II auditorium. Tickets are \$10 per person, check only (payable to JRLW) and are available at the Clubhouse I E&R office.

Sabbath Services

Rabbi Moshe Samber and volunteers will have services



Steve Friedman, courtesy photo

and discussions on Saturday, March 21 and 28 at 9:15 a.m. in Clubhouse II. Rabbi Fink and Cantor Wendy Gonzales conduct services on Sunday, April 5, at 7:30 p.m. in The Inter-Faith Chapel.



Donations

To donate a prayer book in honor or memory of a loved one, send checks, payable to JRLW, to Andrea Kirsch

at (3210 Leisure World Blvd., Apt. 101, Silver Spring, MD 20906).

For contributions to the Torah maintenance fund, mail checks, payable to JRLW, to Carol Wendkos at (14805 Pennfield Cir., Apt. 212 Silver Spring, MD 20906).

To sponsor a Kiddush or Oneg, mail checks (minimum of \$25, payable to JRLW) to Susan Weiss at (3739 Glen Eagles Dr., Silver Spring, MD 20906). For general tzedukah, also send checks to Susan.

Income Tax Preparation



New Client Discount of 15%
Home Visits if Necessary

Joseph M. Kissell
CPA, ChFC, MSA
Certified Public Accountant
(301) 460-0434

March 22: Discussion Session Canceled

by Jerome "Jerry" Cohen

Due to the threat of COVID-19 (coronavirus), the discussion session scheduled for Sunday, March 22, is canceled.

The Jewish Discussion Group's (JDG) next session is scheduled for Sunday, April 26, from 10:30 a.m.-noon in Clubhouse I. The speaker is Paul Bessel, Esq., who is giving a special presentation in honor of the 72nd anniversary of Israel's Independence Day, which falls just two days later.

This meeting is the last scheduled JDG session and, from time to time, meetings may be held for special events. The Group's attendance has grown from about 10-12 regular attendees just two and a half years ago, to an estimated 100 attendees last month.

A special thanks goes to Paul Bessel, Judy Friedman, Jerry Leventhal, Leah Weisman and Bernie Zycherman, all of whom helped out on a regular or occasional basis. And thanks go to the many dedicated attendees who participated in the monthly discussion sessions.

JDG invites everyone to attend its last scheduled discussion group session on April 26.



Simple Cremation and Funeral Services

Ask for the Leisure World Package

Our philosophy is simple, make a commitment to the family who entrusts us with their loved one, and live up to it no matter what. It is our pledge to be of service in every way we can, to help you and your family through a very difficult time.

We take pride in everything we do.

Cremation Packages	Burial Packages
Just a Simple Cremation (online arrangement) \$1,595	Just a Simple Graveside Funeral \$3,595 Casket included (Winston 20 Gauge)
Simplicity Plus Cremation \$2,895	Simplicity Plus Funeral \$5,895 Casket included (Winston 20 Gauge)
Premium Cremation \$3,895	

www.valuechoicebrand.com
ALL INCLUSIVE*



No Hidden Fee Guarantee

Cremation and Burial Costs in Washington Metro Area can be very confusing. Oftentimes other cremation providers quote a low upfront price, but they do not provide you with the total cost. There may be hidden add on charges after you have chosen to utilize their services. Integrity and honesty insures a positive experience for all involved which is why we have created our "No Hidden Fee Guarantee" package plans. We guarantee that the price we give you over the phone or you see on this site, will be the price that you will pay. See comparison chart on our website www.valuechoicebrand.com.*If the death occurs in Maryland.

Value Choice Cremation & Funeral Care, P.A., 1091 Rockville Pike, Rockville, MD 20852
Phone: (301) 296-6864 • Email: info@valuechoicebrand.com
Operating out of Sagel Bloomfield Danzansky Goldberg Funeral Care Inc., Rockville, MD



March 24: Prominent Activist Provides Status Update on the Women's Movement

by Dave Edfors

On Tuesday, March 24, in observance of National Women's History Month, the Unitarian Universalists plans to present a program by Linda Mahoney, president emerita of Maryland National Organization for Women (NOW), to report on the status and goals of the women's movement.

The program begins at 2:30 p.m. in Clubhouse II and is followed by light refreshments and conversation. Residents don't have to be members of the Unitarian Universalists to attend; all residents are welcome.

The NOW is dedicated to a multi-issue and multi-strategy

approach to women's rights and is the largest organization of feminist grassroots activists in the U.S. NOW has hundreds of chapters and hundreds of thousands of members and activists in all 50 states and Washington, D.C.

Since its founding in 1966, NOW's purpose is to take action through intersectional grassroots activism to promote feminist ideals, lead societal change, eliminate discrimination and achieve and protect the equal rights of all women and girls in all aspects of social, political and economic life.

About the Speaker

Mahoney is an activist and volunteers as a political consultant on a variety of issues. She has dedicated most of her life to helping more women get elected and raising awareness for pay equity, equal rights and human rights.

Mahoney has supported numerous Maryland women's political campaigns, has been an active member of the steering committee for the Women's Legislative Briefing, a board member of the Maryland Legislative Agenda for Women and a board member



Linda Mahoney, courtesy photo

of the Maryland Women's Heritage Center.

She is a former member of the Montgomery County Democratic Central Committee, supporter of Emerge Maryland and member of Montgomery County Business and Professional Women, who elected her as their 2017 Woman of the Year.

Since relocating to Washington, D.C., Mahoney earned her juris doctor at The American University's Washington College of Law and recently retired from Ernst & Young's General Counsel's Office in Washington, D.C.

Join the Unitarian Universalists on March 24 for this interesting and informative presentation.

■ Hadassah

March 25: Women's Seder Canceled

by Barbara Eisen

The women's Seder that was scheduled for Wednesday, March 25, is canceled.

Judaic Study Group

If you've always wondered whether anyone was truly content with his or her lot in life, come to the Hadassah Judaic Study Group on Monday, April 20, at 1:30 p.m. in Clubhouse I and find out.

The session is free of charge

and open to all. The Group will look at English translations of familiar-sounding lines from Pirke Avot, or "Sayings of the Fathers." These thought-provoking maxims apply to today's world as much as they did 2,000 years ago.

Marcia Elbrand and Naomi Kline will lead the discussion. Just come with your ideas, or direct any questions to co-facilitators Naomi Kline at (nbk165@comcast.net) or (516-668-2187); Marcia

Elbrand at (marciaelbr@gmail.com) or (216-496-6633); Shari Goldstein at (240-293-6442); or Peri Schuyler at (perislaptop@aol.com) or (301-869-2968).

Greeting Cards

Elaine Schenberg and Jan Bloom sell Hadassah greeting cards. The prices are \$3 each for one to three cards and \$2.50 each for four or more cards. Cards are displayed and sold at every Hadassah meeting. Call Elaine at (301-598-0079) or Jan at (301-593-

7720) to buy cards between meetings.

Youth Project

Larelda Gruber, available at (301-598-5922), is chair of Youth Aliyah/Children at Risk. This project helps disadvantaged children in Israel.

The goal is to create a circle of \$1,000, made by individual contributions of \$40. Send donations to Larelda at (3200 N. Leisure World Blvd. #201, Silver Spring, MD 20906).

General Information

Hadassah sponsors many activities to further the worthwhile projects it supports in medical, educational and social programs in Israel and the U.S.

If interested in knowing more about Hadassah, contact one of its membership vice presidents: Lois Fields at (301-585-9804) or (lois-fields2@earthlink.net), Linda Epstein at (301-847-9650) or (lepstein8@gmail.com) or Natalie Rosen at (301-279-5640) or (bnrosen@comcast.net).



Preserve Your Family Memories!

Photo Scanning by Kim

Personalized service at an affordable price
Volume discounts available!

Call Kim at (301) 438-3140

Virtual Computer Services
www.creative-alternative.com

BEST RATES IN DC

\$80 x Two Men- 2 or 3 Hours Minimum
• Pickups / Deliveries



CONTINENTAL MOVERS

Professional Movers Who Really Care
Owner Operated Since 1982
References - Local & Long Distance
Packing Services - Pianos & Big Objects

Call for a FREE Quote
202.438.1489 • 301.340.0602
www.continentalmovers.net

April 5: Brunch Canceled

by Jerome "Jerry" Cohen

Due to the COVID-19 (coronavirus) pandemic, the brunch scheduled for Sunday, April 5, has been canceled. Anyone who has mailed in a reservation check may receive credit towards a future Jewish War Veterans Post 567 brunch this year.

The Post's upcoming spring brunches have moved to the first Sunday of the month and are scheduled for May 3 and June 7 at 10 a.m.

Post Name Change

The Post's requested name change of "Jewish War Veterans Krieger-Loube Post 567" was officially approved by the National Executive Committee at their

semi-annual meeting held at a conference facility in Crystal City, Virginia, in February.

Past commander of Post 567 Danny Bass was the driving force in initiating and arguing for the name change in the memory of his close friend, Milton "Macky" Loube. For years, Commander Loube and his family provided leadership and performed many of the Post's administrative functions.

Post Information

Members' business meetings are held the first Wednesday of each month from 11 a.m.-12:30 p.m. in Clubhouse I. All regular members and patrons and those who are considering joining are invited to attend.

Two new categories of regular membership were recently added by the JWV national governing organization. Those who have served in the U.S. Public Health Service Commissioned Corps or in the National Oceanic and Atmospheric Administration Commissioned Officer Corps are legally recognized as veterans and are now eligible and encouraged to join the Post.

Those who would like additional information, have questions about membership, would like to be added to Post 567's email notification and e-newsletter list or who wish to make donations to the Post in honor of or in memory of someone should contact Post Commander Jerry Cohen at (240-970-5024) or (jeromeacohen67@outlook.com).

■ NA'AMAT RBZ Club

Club Cancels Spiritual Adoption Luncheon

by Carole Mund

The spiritual adoption luncheon scheduled for Tuesday, April 21, is canceled.

Supporting the Mission

The mission of NA'AMAT Israel is to provide support services for women and children. NA'AMAT's schools and daycare centers promote pluralism and equality in Israel for all of the country's citizens.

A technological high school in Nazareth, which offers quality education to some 300 Arab students, many of whom come from disempowered families, has recently opened a new cross-country cycling program.

NA'AMAT Israel is proud of its 233 daycare centers that ensure the safety and security of more than 17,000 preschool children that are located throughout the State of Israel and the 40,000 families that

depend on NA'AMAT for social, psychological and economic services.

Donor Credit

The many activities Club members enjoy not only provide opportunities for socialization with friends and neighbors, but also serve as fundraisers to support the many programs NA'AMAT provides. Donor credit is simply money attributed to each member over the cost for participating in activities sponsored by NA'AMAT.

Members who have accumulated donor credit should have received notice by now. Contact Theda Rosenblum, donor credit chairperson, at (301-598-9105) for questions.

Help Wanted

NA'AMAT is eagerly looking for someone to take over the responsibilities

of writing NA'AMAT RBZ Club's articles for Leisure World News. It is a wonderful chance to become involved in the organization, among many others. For more information, contact president Linda Schoolnick at (301-681-1076).

Donor Luncheon

NA'AMAT's donor luncheon is on Thursday, May 14, at Manor Country Club. Watch your mail and Leisure World News for further details.

For more information about NA'AMAT RBZ Club, contact co-presidents Linda Schoolnick at (301-681-1076) and Gladys Blank at (301-438-9666). For membership, contact Harriet Chaikin at (240-560-7487). For tribute cards, call Lenore Kalen at (301-922-4348). For the book club, call Barbara Tahler at (240-669-6961).

BICYCLISTS' TRAFFIC RULES

Bicyclists are required to ride as near to the right side of the pavement as possible. All vehicular traffic regulations must be adhered to, i.e., stop, yield, pedestrian right-of-way, etc. Designated arm/hand gestures are required when making left and right turns and stops.

Rowan Lark
That Bed & Breakfast in Olney

The perfect spot for

- Friends weekends
- Family reunions
- Out of town visitors
- Milestone celebrations
- History buffs



Visitors welcome! Come and see where **FDR** slept and **Churchill** smoked his cigars. (No smoking anymore though 😊). Just one mile from Georgia Ave and 108, RowanLark is the only place to stay in Olney and the *closest lodging to Leisure World*.

Rooms start at \$125, Carriage House starts at \$250. Weekends and holidays higher. Weekly rates are available.

Good accessibility, mellow dogs accepted in the Carriage House, family-friendly. Large rooms, private baths, Queen and King sized beds, cots for kids. Hot tub, pool, cable, wi-fi, breakfast included. Guests may invite 2 local friends or family members to share breakfast with advance notice.

Call 301-537-8298 or book on-line at www.RowanLark.com
11 Shallow Brook Court
Olney, MD, 20832

April 27: Interfaith Community Holds Annual Yom HaShoah Holocaust Remembrance Program

by Fred Shapiro

The media has been quite active in recent months reporting about concerns by both the U.S. government and community organizations that the brutality of the Holocaust is being forgotten, and steps must be taken to assure that it is not.

In addition, a spate of shootings and attacks in the U.S. and Europe by extremists has revealed anti-Semitism is resurfacing.

With this in mind, the Interfaith Committee holds its annual Yom HaShoah Holocaust Remembrance program on Monday, April 27, at 2 p.m. in the Clubhouse II auditorium. The program commemorates the victims of the Nazis.

The U.S. Holocaust Museum is

expected to provide a speaker for the program.

In the past, residents have heard from speakers who were survivors of the camps, children who were shipped to safer locations or hidden, an Albanian whose family hid Jews and members of the U.S. military who liberated the concentration camps.

As is customary for the event, residents who are survivors of the Holocaust will participate by lighting seven candles and reading portions memorializing those who died in the camps, the survivors, the resistance, the righteous Gentiles and the future for all mankind and the State of Israel.

The survivors participating this year have been recruited by Susan Weiss. They include Fred Firnbacher, Barbara Firestone, Bettina Gruenbaum,

Inge Guttman, Irene Silver and Dora Wistreich.

Rev. Ramonia Lee and Rabbi Gary Fink will host the program. The program includes readings and prayers by clergy and members of the four religious organizations in Leisure World that constitute the Interfaith Committee – Rev. Lee of The Inter-Faith Chapel, Father James “Jim” Boccabella of Lady of Grace Catholic Church, Michael Benefiel of the Universalist Unitarians and Rabbi Moshe Samber of the Jewish Residents of Leisure World (JRLW).

Cantor Michael Kravitz will participate as well as the JRLW choir and other JRLW members.

Join with your fellow community members as they remember the victims of the Holocaust and dedicate themselves to making certain such an atrocity never happens again.

■ LW Association for African American Culture (LWAAAC)

April's Healthful Thursdays Canceled, but Many Trips Still a Go

by Patricia Means

LWAAAC has canceled the Healthful Thursdays sessions scheduled for April.

Trips

LWAAAC travels to see the play “Seven Guitars” on Wednesday, April 15, at noon at the Arena Stage in Washington, D.C. The play is a part of the August Wilson Festival.

The play “Toni Stone” is on

Wednesday, May 13, at noon at the Arena Stage in Washington, D.C. The play is a story about Toni Stone, the first female in the Negro baseball leagues.

“Tina – The Tina Turner Musical” is on Wednesday, June 24, at 2 p.m. at the Lunt-Fontanne Theatre in New York City.

For additional information on these trips, see the Club Trips section of this publication or contact Juanita Sealy-Williams at (301-822-4531).

Club Information

Members should notify LWAAAC of illness, disability, death or other situations affecting a member or that person's immediate family by contacting Louise Langley, amenities chairperson, at (301-598-3876).

Throughout the month of March, a photo collection of LWAAAC women is displayed in the Leisure World showcase located in the corridor behind the Clubhouse I E&R office.

STX GOLD

We invite you to sell your unwanted gold jewelry...

If you don't wear it, turn it into immediate cash!

We also buy Sterling Silver including place settings, serving pieces and platters.



Gold prices are at a 7-year high!

BY PRIVATE APPOINTMENT ONLY

We come to you. In-home appointments available.

Next to Westfield Montgomery Mall • 10411 Motor City Dr., Suite 750, Bethesda, MD 20817

301-318-9788

www.stxgold.com

Clean Hands Keep You Healthy.

Wash your hands with soap and water for at least 20 seconds to prevent the spread of germs and viruses.



April 17: Group Learns About the Foundation of Leisure World



From left, Alan Goldstein talks about the Foundation of Leisure World at a recent information session at one of the mutuals. Photo by John Van Dyke; equipment in the Computer Learning Center purchased by the Foundation, photo by Alan Goldstein; and The Fabulous Hubcaps, a group whose performances are frequently sponsored by the Foundation, courtesy photo

by Linda Mahler

The New Yorkers and Friends Group holds a general meeting and informational session on Friday, April 17, at 10:30 a.m. in Clubhouse II.

Foundation of Leisure World board member and fellow New Yorker Alan Goldstein will present an overview of the important role the Foundation of Leisure World provides to the community by enhancing the quality of life for residents in the areas of education, entertainment and health.

The Foundation recently replaced the decade-old computers in the library in Clubhouse I, solving long festering problems while moving the library's data to the safety of the cloud. It has also bought ergonomic drawing tables for

the Rossmoor Art Guild, underwritten E&R presentations such as The Fabulous Hubcaps and has purchased nearly all of the equipment for the Computer Learning Center in Clubhouse II.

Currently, the Foundation is considering new projects ranging from improvements to the Clubhouse II auditorium and meeting rooms, to new transportation initiatives, cultural events and badly needed equipment for many clubs.

The meeting is open to all residents, and pizza will be served following the presentation. The presentation is free to New Yorkers and Friends Group members and \$5 for non-members, payable at the door by check (made payable to

Foundation of Leisure World), or by cash. If planning to attend, RSVP to Alan at (ajg@webbus-connect.com) or (301-847-9215) by Monday, April 13, to ensure that there is enough seating and pizza. The Group is looking forward to a fun and informative meeting.

Looking Ahead

Plans are in the works for the Group to attend a

Nationals vs. New York team baseball game in the spring at Nationals Park in Washington, D.C. Details will be forthcoming.

For more information about the New Yorkers and Friends Group, contact either co-president Linda Mahler at (301-288-4367) or Carole Mund at (301-598-2768). New members are always welcome!

MOVE IN NOW FOR YOUR FIRST MONTH'S RENT ONLY \$99!

Assisted Living and Memory Care with a whole lotta heart.

In other words, The Landing of Silver Spring has a whole bunch of heartfelt help and care. And, grammar aside, you'll feel a whole lotta at home here, too. But don't take our word for it. Come see for yourself at a complimentary lunch and tour. Please call (240) 377-0084 now to schedule.

And bring a friend. Or come meet a few new ones.



THE LANDING
OF SILVER SPRING

A Whole Lotta Heart

13908 New Hampshire Avenue • Silver Spring
(240) 377-0084 • TheLandingOfSilverSpring.com

Ⓢ A LEISURE CARE COMMUNITY



JOHN J. FERGUSON, ESQ.
FERGUSON & WILPON

ESTATE ADMINISTRATION/PROBATE

WILLS POWERS OF ATTORNEY LIVING TRUSTS

REAL ESTATE MEDICAL DIRECTIVES/LIVING WILLS

CALL JOHN FERGUSON
301-570-3633

3406 Olandwood Court, Ste. 202, Olney, MD 20832
WE CAN MEET IN YOUR HOME OR OUR OLNEY OFFICE

Club Blends New Initiatives, Ongoing Successes

by Marcia L. Elbrand

“**R**ossmoor Women's Club members are dedicated to providing opportunities for success to area residents who may need a boost,” said Noreen Potter, who has served as the Club's vice president for six years.

Like many Rossmoor Women's Club (RWC) members, Potter refers to herself as “a strong

supporter of education.” Having worked in Montgomery County schools for 25 years, she says she accepted a leadership role in the Club “in order to be of service.”

Giving Back

For years, RWC has been awarding scholarships to young women at Montgomery College. In recent years, Potter helped establish a connection with nearby Harmony Hills Elementary School, where RWC volunteers now provide ongoing support to the pre-kindergarten Head Start class.

As the commitment grew, volunteers began in-class tutoring, and have now provided hundreds of hand-knitted hats and scarves to the students.

RWC volunteers also pack bags of nutritious groceries for the students' families to cover winter and spring vacation breaks. And, RWC donates funds for school bus transportation for educational field trips.

Under the leadership of education committee chairperson Rita Posner, the Harmony Hills connection has grown and expanded, and community members often send checks, payable to Rossmoor Women's Club, (memo line: Harmony Hills Elementary School), to RWC treasurer Peggy Sullivan at (3743 Glen Eagles Dr., Silver Spring, MD 20906).

Scholarship Luncheon

Preferring to work behind the scenes, Potter admits that her years at Springbook High School had made her realize that affording college was not easy for some local students.

“We talked to the guidance department at nearby Blake High School, and began offering scholarships to outstanding young women there,” she said.

On Wednesday, May 13, RWC members and guests will continue their now well-established tradition of awarding these scholarships to selected

young women from Blake High School at a scholarship luncheon at Manor Country Club.

Luncheon details will be forthcoming.

Membership

Membership in the RWC is open all year long to women who reside in Leisure World and others from nearby areas.

Annual dues are \$40 per person. Checks, payable to RWC, can be mailed to Aggie Eastham, membership chair, at (3100 North Leisure World Blvd., #126, Silver Spring, MD 20906).

For questions, contact her at (aggie.eastham@verizon.net).

June Trip

RWC is planning a 90-minute boat trip with views of historic Annapolis Harbor on Friday, June 26.

For details, see the Club Trips section of this publication. For reservations, contact Eyre Travel at (800-321-3973, ext. 4).



Mark C. Wimsatt Painting

Interior
Free Estimates

Leisure World References
* Special Discounts *
for Moving in or Moving out

SENIOR DISCOUNTS!

301-828-6500

Serving Leisure World for
over 35 years.

MHIC 10165 Insured

Leisure World trusts Family & Nursing Care



As a premier resource for in-home care services,

Family & Nursing Care helps families rest easy, knowing their loved ones are well supported. From that first cup of coffee in the morning to a sacred bedtime ritual to an unexpected need in the middle of the night, **we are here for you.**

To learn more, come meet **Kelly** and **Jeff** in our office in the Leisure World Medical Center.



Licensed as an RSA by the MD DOH, OHCQ, MD RSA License R2519R; MD NRSA 070605.

3305 N. Leisure World Blvd. familynursingcare.com (301) 588-8200

Boomers Join Together for Games, Movies and More

by Beth Leanza

Any resident who is active, fun-loving and likes to socialize is welcome to join the Baby Boomer Club.

Club members enjoy playing board games and watching movies together in Leisure World and at a local theater. They bring snacks to share, and the Club provides water and soda. Since Club events are held in Clubhouse II, members can bring alcoholic beverages.

A lot of members really enjoy traveling to Toby's Dinner Theatre in Columbia, Maryland, for a buffet meal and great musical performance.

Some Club members also like to take walks together around the community and sometimes bring their friends and families.

Join Us

Members who wish to renew and residents who want to join should send a check for \$5 to membership chair Susan Landesberg at (3505 Twin Branches Ct. 37-C, Silver Spring, MD 20906). She has the 2020 member cards for people who were members in 2019. Include an email address to received updates on Club events.

Residents who are unsure they want to join can attend a Club activity first. The Club's website is available at (<https://sites.google.com/site/bbclwmd>) and includes a calendar with activity information.

Have you joined but aren't receiving Club emails? Contact Beth Leanza at (bethlea12020@gmail.com) or (301-598-4569).

Friday Hikes with Joyce

Residents do not have to join the Baby Boomer Club if they only want to join the walkers.

Although the walks' organizers are Club members, they welcome anyone to join the walks.

Joyce Richardson, available at (301-598-7098) or (777cheekie333@gmail.com), leads walks on Fridays. They meet up at 1:15 p.m. at a local trail. Most walk about three miles, but some walk in halfway and return.

To carpool to the trail, contact Joyce at (301-598-7098) by Thursday night.

To get directions to the walk sites, visit the Baby Boomer Club's website at (<https://sites.google.com/site/bbclwmd/>).

[google.com/site/bbclwmd/calendar](https://sites.google.com/site/bbclwmd/calendar)) and go to the calendar page, or use Google Maps.

- March 27 – Woodend Sanctuary (Chevy Chase, MD). Meet in the parking lot near the gift shop at 1:15 p.m. Bring water.



Sunday Morning Walks

Early risers meet up on Sundays at 8:30 a.m. near Arden Court (across from Kelmscot Drive) to walk the entire Leisure World Boulevard circle. Sometimes they go out to breakfast after.

Need more information? Contact Ted Michos at (Tedmichos@gmail.com).

Weeknight Walks

For a shorter walk (about one mile), join a group to walk the Broadwalk in Montgomery Mutual.

The walkers meet each weeknight at 5:15 p.m. in the Clubhouse I lobby. No one makes an announcement – look around and introduce yourself!

AVA Walks

The American Volkssport Association (AVA) holds events and provides guides to local walks of interest.

More information about AVA walks is available on the Club's website at (<https://sites.google.com/site/bbclwmd>). Click on Walks, below the events calendar. You do not have to join AVA to participate.

Personal Care Services In The Comfort Of Your Home



- Household chores
- Medication reminding
- Daily living and companionship
- Meal planning, preparation and monitoring of eating habits
- Overseeing activities, such as walking, to minimize the risk of accidents
- Shopping for groceries, with or without client
- Bathing and grooming and general personal hygiene
- Help with planning and making decisions
- Nursing services and many more!

Family Owned & Operated
Serving Montgomery County



Call for a Free Consultation and Assessment • 301.717.2212 • www.bestseniorcare.us

Family Owned and Operated

Serving LW For Over 30 Years



I saved \$150
on my glasses at Eyeland!

\$150 OFF
a pair of
prescription glasses

eyeland
301-871-6454

13808 Georgia Ave. 1 mile south of LW.

WEICHERT, REALTORS
LEISURE WORLD PLAZA

MAYNARD E. TUROW

Agent 22 years... Listings, Resales

**THINKING OF SELLING??
Or Friends – Relatives Buying??**

A Real Estate specialist for 22 years working exclusively the senior market. I can answer your questions & find you your dream home. If selling, I'll get you the best price!



(C) 301-518-3834

(O) 301-681-0550



Free brochures, Comps, Layouts, Info
Direct: 301-518-3834
maynardturow@yahoo.com
Free notary by appt.

Club Follows Appropriate Health Precautions Regarding Trips

by Elizabeth Brooks-Evans

The Going It Alone Club (GIAC) has suspended its Saturday armchair travel and games until further notice. The Club also offers frequent motor coach trips to which residents, whether single or married, are welcome to attend. GIAC is closely monitoring the developing news about the COVID-19 (coronavirus). The Club is committed to following the guidelines and recommendations of the federal, state and local government and will exercise caution when it comes to the health and safety of trip and other program participants.

Trips
The July trip to Montreal, Quebec City and Ottawa Canada has been canceled, and refunds are being made. To learn

more, contact the trip coordinator Buck Parr at (301-760-8094). The trip to see “Love Letters” at Washington County Playhouse in Hagerstown, Maryland on Wednesday, April 15, is canceled. For more information, contact Nancy Alderman at (301-598-5614). On Thursday, Aug. 20, GIAC travels to Harris Crab House and Amish Market for all-you-can-eat Maryland blue crabs, steamed shrimp, fried chicken, corn, cole slaw, potato salad, soft drinks, coffee, tea and assorted desserts, followed by a stop at an Amish Market to shop for fresh fruits and vegetables, gifts, homemade cakes, cookies and much more. On Wednesday, Oct. 14, GIAC travels to Harrington Casino “Where Winners Play” in Kent County, Delaware. A buffet lunch will be offered at a discount. For

more information, contact Joe Parker at (301-598-3457). More information on these trips is found in the Club Trips section of this publication. Sign-ups for trips takes place during Saturday Afternoon Live (SAL) from 1:30-3 p.m. in the Clubhouse II lobby when representatives will be available to receive payments and answer questions. The GIAC newsletter, which has more trip information, is also available at during that time.

Membership
Those wishing to sign up for GIAC membership or renew their membership are invited to do so every SAL from 1:30-3 p.m. The membership fee is a nominal \$8 per year and can be submitted during SAL, via the mail slot in the Clubhouse I E&R office or mailed to (P.O. Box 12024, Silver Spring, MD 20908). For more information about membership, contact GIAC president Elaine Strass at (240- 447-2166).



My name is Jay Guan

I am a husband, a father, and on weekends, a soccer player. I am an aerospace engineer, an education advocate, and also a transportation activist.

I am running for MCPS Board of Education At-Large

I am running because I believe that **All kids** should have access to an excellent **future-ready education**.

I grew up in an immigrant, low-income family. I personally experienced the effects of the opportunity gap. I was fortunate to tread the **upward mobile** path. and I want our kids with less means to be able to do the same.



Neighborhood School
Family and Community Engagement
Build Relationship and Trust
Interdisciplinary STEAM Education
Career Path of Tomorrow
Small Business/Entrepreneurial Training
Evaluate Innovative Education Practices
“Tele-teach”
Online
Homework Help & Tutoring

Follow us on Facebook: facebook.com/JG4BOE

For more, check out: <https://www.jayguan4boe.com/vision-and-policy>

By Authority : Friends of Jay Guan. Treasurer: Yuxiu Fu



PEDESTRIAN SAFETY DURING SUMMER

With the start of daylight saving time and the summer months fast approaching, the community is reminded to pay special attention to pedestrians out walking during dawn and dusk.

Drivers are asked to keep in mind the following:

- Many people in the community are hearing or sight impaired, and others walk slowly or use walkers or scooters.
- The speed limit on Leisure World Boulevard is 30 miles per hour. Watch your speed and obey all traffic laws.
- Maryland State Law mandates: “Pedestrians in a crosswalk, whether marked or unmarked, have the right-of-way.”

Pedestrians are reminded to:

- Wear comfortable walking shoes to prevent falls.
- Wear brightly colored clothing when walking before dawn and after dusk.
- Always carry a form of identification that includes your name, address, any medical condition and the name of a person to contact in case of an emergency.
- Be particularly attentive of vehicular traffic when crossing at all intersections and crosswalks.

The Write Stuff

by John Moens

The Writers of Leisure World met on March 5, in Clubhouse I.

In “Cats 1+1=4,” Jane Hawes related a story of experimental surgery that enabled her cat, Play Doh, to have a new life.

“Family Memories,” shared by Joanie Friedlander, describes one of her lifetime setbacks with no fail chocolate fudge, which wound up in the trash.

John Moens’ science fiction essay “The Last Testament of the Aurora” was inspired by a stunning painting, “The Last of 5,000,” by Charles Russell, the cowboy artist. The painting conveys the odds confronting the spaceship Aurora, a dying ship transporting a dying race from a dead Earth.

The “Pennsylvania Deer Wars” shared by Woody Shields analyzes the decades-long struggle to manage deer populations, protect farmers’ crops and avoid human deaths from deer-related vehicle accidents and diseases.

Jerry Udelл examined the continuing struggle throughout history for the right to vote.

Doug Kiessling related a captivating story about a family friend who detached from the military after World War II and resisted innovation. He lived in a small house on eight acres in the middle of a suburban development. He did not have a telephone or running water.

Mimi Schultz enchanted the Group with “Great Grandma Shaindel,” a story of survival. Her great-grandmother traveled from Poland to the U.S.

to find and ask Menachem Scher for permission to terminate their arranged marriage. Schultz never discovered why her great-grandparents elected to stay in the U.S. and continue their marriage. Fortunately, by not returning to pre-war Poland, they probably saved their lives.

A new member, Nooshin Javan, shared her poem “About Courage,” as almost all things are possible.

Grace Cooper read her poem “Family Memories,” recalling, “boiled potatoes and cabbage at one grandma’s” and “fried chicken and sweet potatoes at the other.”

Writer’s Spotlight

As an optometrist, Doug Kiessling provides his written insights at meetings from a

unique point of view. He has been a member of the Writers of Leisure World for three years.

Kiessling is the author of a newsletter for optometrists in Virginia, Maryland and Washington, D.C. In the Writers of Leisure World, he focuses on events and characters from his past.

General Information

The Writers of Leisure World meet on the first and third Thursday of each month in Clubhouse I. All residents are welcome to attend.

The Group hopes more residents will join in to read their work. The Group enjoys all levels of writing, so bring your poetry and essays to the next meeting.

■ **Comedy and Humor Club**

Dinner Theatre Show was Boffo

by Al Karr

The Comedy and Humor Club-sponsored bus trip to take in a live show and buffet dinner at Toby’s Dinner Theatre in Columbia, Maryland, on March 4 was “wonderful, a great success.”

Those were the words of Ruth Becker, the Club’s new road trip organizer, who gave Toby’s show “Kinky Boots” “five stars — no, 10 stars.” She said she received “all positive feedback” from theatergoers – Leisure World and Bedford Court residents and guests.

Becker, a Club member, deserves fulsome praise for her considerable work planning and carrying out the ride-see-and hear event, a day’s entertainment for the 56 theater patrons, Club president John Lass said.

More often, the Club presents a weekly forum for residents to tell jokes, spin tales and otherwise spur the audience into laughter every Tuesday at 1:30 p.m. in Clubhouse II. All residents are welcome to come join in the fun.

Here some examples of that merrymaking at recent Club meetings, when jokers included Sam Hack, treasurer

Herb Hodes, vice president Skip Schoening, Rudy Volin, Susan Dawson, Ruth Becker, Wally Becker, Al Karr, Sunny Levin, Fred Firnbacher, Alan Packer and John Lass:

- Herb – Here are three commandments for older folks:
Talk to yourself, because there are times that you need expert advice.
Consider “old style” to mean the clothes that still fit.
You don’t need anger management. You just need people to stop angering you.
- John – After the doctor told Sylvia she had only 15 more years to live, she decided to live it up by buying fancy new clothes and getting a tummy tuck and a facelift. Later on, she was struck and killed by a bus and went to heaven, where she complained that she was supposed to live 15 more years. “I’m sorry; I didn’t recognize you,” God replied.
- Ruth – Told that the world would end soon, a senior citizen asked that he be notified when it starts to happen. Since New Orleans lags

behind the rest of the world, that will give him an extra 20 years, he said.

- Alan – An elderly lady said that when she dies, she wants to be cremated and her ashes sprinkled in the aisles of the local Bloomingdale’s department store. That way, her daughter will have to visit her

at least twice a week, she said.

- Skip – With snowstorms coming, Irving tried to outguess the snowplows. He parked his car on the west side of the street, and then three days later, on the east side. Finally, he asked his wife, “Why don’t I just leave it in the garage?”



FAMILY FOOT & ANKLE ASSOCIATES OF MARYLAND

Dr. Michael Frank

Dr. Marc Goldberg

Dr. Adam Lowy

3 Convenient Locations Minutes from Leisure World

OLNEY
Oland Professional Center
3408 Olandwood Ct. Suite 204
Olney, MD 20832
(301) 924-5044

KENSINGTON
Family Foot & Ankle Associates of Maryland
3930 Knowles Ave Suite 202
Kensington, MD 20895
(301) 942-8110

SILVER SPRING
Colewood Centre
10801 Lockwood Dr. Suite 260
Silver Spring, MD 20901
(301) 439-0300

www.MarylandFeet.com

Organizing iOS Home Screen

by Ron Masi

and friendly home screen:

Are your iOS home screens cluttered with apps that aren't in logical order or that you're not using? Is it hard to find what you're looking for? A cluttered home screen is fixable!

Keep in mind that you have several "home screens," and the tiny gray dots at bottom of the home screen (see screenshot) display which you are on and how many you have. Swiping the screen left or right changes home pages like pages in a book. Dragging an app or folder takes a bit of finesse and practice.

Here are three ways to have a more manageable, effective

Remove Unwanted or Unused Apps

On the home screen, gently touch and hold (long press) any app, and on the resulting pop up menu tap "Edit Home Screen" (The icons will then wiggle). Apps the user can

delete will have a gray X in its top corner (Folders and some Apple apps cannot be deleted). Tapping the X deletes that app. If you paid for an App from the Apple store you can download it again without further charge.

Create Folders

Creating folders allows the user to group related apps into one place. For example,



Graphic by Ron Masi

one folder could contain all of the user's news apps, such as The Washington Post and CNN.

To create a folder, follow the aforementioned steps but when the apps start to wiggle, drag one directly on top of a related app (i.e. Washington Post onto CNN), which creates a window containing both apps. Change the folder's suggested name by tapping it and then typing what you'd like to name it.

The user can drag more apps to an existing folder. There is no limit on the number of folders or their contents.

Arrange Home Screen

Now that you have better organized and significantly reduced the real estate taken up on your home screen, there is one more step to consider.

The Dock is at the very bottom of your screen and can hold only a few apps (see screenshot). They stay there no matter which home screen you're on, so this is the logical place to have your frequently

used apps/folders.

The Dock in the screenshot on this page contains Messages, Calendar, Mail and a Folder with "Often Used" apps. If what is currently in your dock is not important to you and another app is, then switch them by dragging.

Congratulations! You have decluttered your iPhone/iPad.

LW Apple Club News

All LW Apple Club activities, including the Tuesday Apple Clinics and the fourth Tuesday programs, have been canceled until further notice.

For more information, visit (mac.computerctr.org), which also contains past and scheduled programs as well as the Club's Leisure World News articles and more. The Club's February program was "Back to Basics: iPhone and iPad" by Ron Masi.

Sticking to basics, he walked the approximately 40 attendees through iOS security, wi-fi, desktop arranging, settings, phone and mail. Many attendees suggested this type of basic program be repeated, and the Club will oblige.

Membership in the Club is a \$5 donation per household. Sign up at any LW Apple Club meeting, which are held on the fourth Tuesday of the month. Make checks payable to LWCC Inc.

O'CONNOR'S PAINTING SERVICE, INC.

FREE ESTIMATES
301-963-4226

Over 30 Years Experience
Interior/Exterior Painting
Residential Homes – Condos
Wallpaper Removal
Carpentry Power - Washing
Ask about our Senior Discount

JOEL'S EXECUTIVE CAR SERVICE

301-438-9777
301-980-4734 (cell)

- Airport
- Trains
- Doctor Visits

Get the Royal Treatment
Available 24 hours.

Kathleen and Eileen Kane

Honored to Serve You For 35+ Years with
Cathy Gilmour Real Estate and Proudly Continuing that
Same High Level of Service with WEICHERT REALTORS®

Kathleen Kane
Assoc. Broker

Eileen Kane
Assoc. Broker

UNDER CONTRACT! – BERKELEY – Brick townhouse in Oxford Ct (Montgomery Mutual), 2 BR, 2 Full and 1 Half bath, Florida Rm. Addition, new wall to wall carpeting, fresh paint. **\$181,000**

UNDER CONTRACT! – G Model in FAIRWAYS SOUTH – Lovely views, almost 1,200 sq. ft. of living space include two bedrooms with en suite baths, Living Rm, Dining Rm, Table Space Kitchen, Glass- and Screen-Enclosed Balcony. Will be freshly painted and have new wall to carpeting installed. **\$183,900**

ARBOR – 4th Floor in THE PINES, this 1 bedroom + den/ dining room has a full bath with newer step-in shower and ceramic tile plus a separate half bath, living room, bright and clean kitchen. HVAC replaced in 2014. Sellers are offering a one year home warranty. **\$119,900**

Free Notary Services w/Eileen
Please call 240-460-8647

Dedication Makes The Difference!

WEICHERT REALTORS®
Office: 301-681-0550

Kathleen: 240-506-6079 | kathe.e.kane@gmail.com | Eileen: 240-460-8647 | ekkane51@icloud.com

ADVERTISEMENTS SUPPORT THE NEWSPAPER.

When you patronize businesses, tell them you saw their ad in the Leisure World News.

Clubs, Groups & Organizations In Brief

Amateur Radio Club: Calling all hams! All resident amateur radio operators (hams)—or would-be operators—are invited to join our business meeting/lunch the second Tuesday of each month. Members meet in the Stein Room in Clubhouse I at noon. For more information or to learn about amateur radio, call Bryan West at (301-598-0137).

Book Club Network: The network is a collection of book discussion groups of eight to 12 members each, providing a forum for residents to get together with other avid readers to read and discuss their favorite books. Members meet monthly to talk about a specific work chosen by their club. For further information, contact Verna Denny at (301-598-1418) or (verhd@msn.com).

Clipper Workshop: Members assemble clown hand puppets for Holy Cross Hospital. They are used in the pediatric and emergency rooms. No special skills are needed. Some sewing skills are necessary. Bring a bag lunch. (We will eat in the lunchroom.) Members meet every first and third Monday in Clubhouse II from 10 a.m.-2 p.m., or any portion of the time you can devote to making a child smile. Donations of cotton fabrics, stuffing, thread and iron-on facing are appreciated. Contact Joan Mahoney at (240-833-2724) or Jane Brinser at (301-438-2599) for further information.

Computer Learning Center: Located in Clubhouse II, the Computer Learning Center is operated by The Leisure World Computer Center Inc. The all-volunteer staff comprises a board of directors, computer room monitors and other volunteers. The center provides residents free training and assistance in the day-to-day use of computers for online research and other personal needs. The center has Mac and Windows systems computers as well as color laser printers for printing and scanning. For more information about the Computer Learning Center, please visit (www.computerctr.org) or contact the E&R office in Clubhouse II at (301-598-1320).

Groups.io: The Leisure World Yahoo Group has become Groups.io. It is like an online bulletin board with issues pertaining only to the Leisure World community. The Group's platform is secure, with strong anti-virus, spam control and privacy features installed. To become a member, email a request with your name and mutual name to the Group's moderator at (paule@lwm10.com).

Hispanos de Leisure World: All Hispano-Parlantes residents are invited to join the club in enjoying its activities, including card games and conversations, every Friday at 3 p.m. in Clubhouse I. Once a month, Latin-American and Hispanic movies, with English subtitles, are screened. The club organizes a Fiesta de La Amistad on a weekend in the spring and a Christmas dinner in December. The club has also presented musical shows in the Clubhouse II auditorium as well. If interested, contact Maria Blanco, club president, at (301-847-9066) or Carlota "Loty" Goldenberg at (301-598-6869).

Interfaith Committee for the Homeless and Working Poor: The focus of this committee is to provide opportunities for Leisure World residents to work together to solve some of the problems experienced by homeless and working poor individuals and families in Montgomery County. This coalition is comprised of representatives from the Inter-Faith Chapel, Jewish Residents of Leisure World, Our Lady of Grace Catholic Church, the Unitarian Universalists of Leisure World and the community at-large. If you would like information about participation in ongoing projects of this committee, contact Gwen Raphael at (301-348-8814) or (graphael@verizon.net).

Knitting Corner: Join us the second and fourth Fridays of each month at The Inter-Faith Chapel from 10 a.m.-noon.

Meetings have been canceled until further notice. Bring your knitting and enjoy the conversations. We have patterns and yarn for the Chapel's mission. Yarn donations gratefully accepted. Call Joan at (240-833-2724) if you have any questions.

The Lapidary Shop: Our well-equipped Lapidary Shop is available to all residents who join the Lapidary Club and take training on the use of the shop's equipment. Shop steward Mark Parker oversees training and is usually in the shop on Monday afternoons after 2 p.m. To arrange for training, contact Mark at (240-723-5860), or drop by the shop in Clubhouse II on a Monday afternoon to talk to Mark and see the shop. For those who have received training, the shop is available whenever the Clubhouse II E&R office is open. Get trained and make cabochons. Get involved and make friends.

LW LGBTQ Alliance: The group was formed to give members of the LGBTQ community a safe and inviting place to come and meet new friends and to get involved in social activities. Our meetings are the third Saturday of every month at noon in Clubhouse II, except in July and August. We welcome everyone; being gay is not a prerequisite. The LW LGBTQ Alliance strives to provide events and activities to develop strong relationships through education, interaction and fun within our group and with the entire Leisure World community. For additional information and events, email us at (lwlgbt@gmail.com). You can also follow us on Facebook at LW LGBT Alliance.

Model Railroad Club: If you have ever had an interest in model trains, the three layouts in the basement of Clubhouse II offer just about anything you could ask for. The largest layout, in HO, features scale miles of track, yards and industries, and supports the simulated operation of real railroads delivering passengers and goods from source to final destination. Visit Club members on Mondays and Wednesdays from 5:30-7 p.m. and Thursdays from 2-4 p.m. in the basement of Clubhouse II, or join members for the monthly business meeting on the second Thursday of the month at 4 p.m. in Clubhouse II. For more information, call Marilyn Chmielewski, president, at (301-438-3259).

Musical Jammers: We gather informally twice a month with other amateur musicians, singers and lovers of music to sing, play music and have fun – no dues, no meetings, no agendas, no committees. We meet on the second and fourth Mondays of every month at 10 a.m. in Clubhouse II. All instruments and voices are welcome. You bring it; we'll sing it. Questions? Call Richard Lederman at (301-598-1132).

Nextdoor.com: A friendly place online to share tips and meet neighbors. The Group already has a record of success helping to make Leisure World even better. Free. Please join the 1,200 plus members. Go to (www.nextdoor.com/join) and enter the code QHMXCF.

The Philadelphians: For further information about the Philadelphians and their events, contact Steve Kane at (301-598-2330) or (kanens@verizon.net).

The Pittsburghers: If you were born, raised or lived in Pittsburgh and/or the Greater Pittsburgh area, you are welcome to join this Group. For more information, call Tania Iwanowski at (301-598-2278) or email (Tania.Iwanowski@yahoo.com).

Quilting Group: Come and join this fun group as members work on individual projects. The Group now includes those interested in all needlework and knitting. Members meet the second and fourth Thursdays in the Clubhouse II multipurpose room at 9:30 a.m. If you have any questions, call Clydis Kellough at (301-642-2430). Meetings are canceled until further notice.

► to page 38

Clubs, Groups & Organizations In Brief (cont.'d)

Stitchers Group: Needlepoint, cross-stitch and more. If you enjoy stitching or would like to learn, members meet every first and third Thursday from 10 a.m.-noon in the Clubhouse II multi-purpose room. Come and share your finished work and enjoy stitching with others while members learn new skills together. Call Audrey at (301-598-4903).

Short Story Group: The Group reads from a collection of short stories and discusses them together. The Group is now reading from the anthology "The Oxford Book of English Short Stories," edited by A.S. Byatt. On Wednesday, April 1, Beth Leanza will lead a discussion of "The Sacristan of Botolph" by William Gilbert. On Wednesday, April 15, the Group will discuss "The Haunted House" by Charles Dickens. The Short Story Group meets on the first and third Wednesdays of the month at 11 a.m. in Clubhouse I. For information about the group or ordering the next anthology, call Beth Leanza at (301-598-4569).

Stamp and Coin Club: Are you a philatelist or a numismatic? Join the Stamp and Coin Club. Members meet on the first Thursday of each month at 3 p.m. in Clubhouse I. They discuss their collections, including first day covers, day of issue programs, yearbooks, coins, medals and more. Stamps are shared for "show-and-tell," and members hold an auction of their stamps. A gift certificate is awarded as a door prize at each meeting. All residents and non-residents are welcome to attend.

Annual dues are \$5. If interested, contact Rita Mastrorocco at (301-814-9196).

Town Meeting Organization: TMO is a movement of residents concerned about governance and management. The Group meets every month to organize, discuss and conduct resident town hall meetings. Topics such as the proposed administration building, community governance, management and its involvement in mutual elections, and funding a strategic plan will be addressed. TMO meets the third Friday of each month at 2 p.m. in the Clubhouse I. All residents are invited to attend and become active in the movement. For information email (admin@townmeetingorganization.com) or visit (www.townmeetingorganization.com).

Women in the Military: Are you a female who has served in the armed forces? Join members as they shine a light on the role that women play in serving our country. Members also strive to promote awareness of the Women's Memorial at Arlington National Cemetery. The Group meets every second Wednesday of the month at 10 a.m. in the Terrace Room. Call Barbara Long at (301-438-3427) for more information.

Women's Fun Bunch of Leisure World: The Women's Fun Bunch is for widows living in Leisure World. Members have a good time together and plan different social activities. For inquires, call Marlene at (301-438-7773).



Check out my 5 star reviews on [zillow.com](https://www.zillow.com) and [google.com](https://www.google.com)

Thinking of buying or selling in Leisure World?

Homes are selling fast!
Call me to learn what
your home is worth.
Phone 240-506-2434



- Weichert's Top LW Lister in 2019
- Extensive Marketing Background
- Weekly Listing Updates
- Free Professional Photos, Videos and Brochures
- Home Staging & Repair Coordination



COMING

Villa Cortese
condo 1,633 sf,
3 bedrooms, 2.5
baths, spacious
living room, sepa-
rate dining room,
table space kitch-
en, large sunroom.
Indoor garage
space. Nice view.



COMING

Beaverbrook Ct.
1,043 sf. 2 bed-
rooms, 2 baths.
All new paint &
carpet. New stain-
less appliances,
granite counters.
Updated baths.
Enclosed balcony.
List \$170,000



SOLD

14609 Deerhurst
3 bedrooms,
2 baths. 2 car
garage. Updated
kitchen, silestone
counters. Updated
bathrooms. New
plank flooring
throughout.
Sold \$380,000



SOLD

Greens condo
1,615 sf, 3 bed-
rooms, 2.5 baths.
Fully updated
kitchen with gran-
ite and soft-close
drawers. Hard-
wood flooring in
LR, DR and hall.
Sold \$310,000



Barbara Michaluk | Weichert

Phone Direct Line 240-506-2434 (o) 301-681-0550

www.BarbaraSellsMDhomes.com / Email: michaluk@verizon.net

Authorized Leisure World® Specialist / E-Pro® Certified
Senior Real Estate Specialist® / Certified Staging Agent®
Internet Marketing Specialist® / Relocation Specialist®



Weichert
REALTORS



It Pays to Work with an Authorized Leisure World® Specialist

**KEEP UP WITH
YOUR COMMUNITY**



Leisure World of Maryland
is on facebook at:
[www.facebook.com/
LeisureWorldofMaryland/](https://www.facebook.com/LeisureWorldofMaryland/)



Follow Leisure World
on Twitter:
[@LeisureWorldMd](https://twitter.com/LeisureWorldMd)

Leisure World Club Trips

The next deadline for trip submissions is **Monday, March 23**. The trips listed below are sponsored by Leisure World groups and organizations and not by Eyre Leisure World Travel. These trips are **open to all residents**, not only members of the specific club. For information, contact the person listed with each trip. (Do not contact the Eyre Leisure World Travel or E&R office.) Leisure World clubs and organizations that want to be included in this column must provide a submission to the News by 3 p.m. on the Monday deadline. Due to space limitations, the Leisure World News reserves the right to edit or delete submissions. Email your trip information to **lwnews@lwmc.com**.

Please Note: Member/Non-Member pricing is at the discretion of the individual clubs.

**April
15**

"Love Letters," at the Washington County Playhouse, Hagerstown, PA

Join the **Going It Alone Club (GIAC)** for a trip to Hagerstown for brunch and to see a performance of "Love Letters" at the Washington County Playhouse. "Love Letters" revolves around a man and a woman, who, while marrying and divorcing others, and pursuing careers successfully or not, correspond faithfully for 50 years.

The bus departs at 11:30 a.m. from Clubhouse II and returns at approximately 7 p.m. The cost is \$75 for members and \$85 for non-members and includes the brunch buffet, show, transportation and tip. For more information, call Nancy Alderman at (301-598-5614).

**April
15**

"Seven Guitars" Arena Stage, Washington, D.C.

The **Leisure World Association for African American Culture (LWAAAC)** hosts a trip to see the play, "Seven Guitars," at the Arena Stage in Washington, D.C. The play, a part of the August Wilson Festival, revolves around seven lives that are interconnected in 1940s Pittsburgh, Pennsylvania, when an old blues singer vows to turn his life around for a second chance. The play is infused with deep and soaring blues rhythms and pits the desire for a better future against harsh realities of life.

The cost is \$60 per person and includes bus transportation and admission to the play.

The bus departs Clubhouse II at 12:30 p.m. and returns approximately 4 p.m.

To reserve seats, payment (checks only, payable to LWAAAC) may be placed in the LWAAAC slot in Clubhouse I E&R office by Saturday, March 21.

For additional information, contact Juanita Sealy-Williams, program committee chairperson, at (301-822-4531).

**May
13**

"Toni Stone" Arena Stage, Washington, D.C.

Join the **Leisure World Association for African American Culture (LWAAAC)** on a trip to see the play, "Toni Stone," at noon at the Arena Stage in Washington, D.C. As the first woman to play baseball in the Negro baseball leagues, Toni Stone is considered a pioneer. The play is an uplifting story of Stone as she blazes a path in the male-dominated sports world against all odds, shattering expectations and creating her own set of rules in the 1950s.

The cost is \$60 per person and includes bus transportation and admission to the play.

The bus departs at 10:30 a.m. from Clubhouse II and returns approximately 3:30 p.m.

To reserve seats, payment (checks only, payable to LWAAAC) may be placed in the LWAAAC mail slot in the Clubhouse I E&R office by Friday, April 10.

For additional information, contact Juanita Sealy-Williams at (301-822-4531).

**May
20-21**

Dover Downs Hotel and Casino, DE

Return with **NA'AMAT RBZ Club** to Dover Downs for this always-popular overnight trip. The cost is \$120 per person, double occupancy, or \$170 single occupancy, and includes round-trip transportation, beautiful hotel accommodations and a bountiful breakfast buffet, plus \$50 play money from the Casino.

The bus departs on Wednesday, May 20, at 10:30 a.m. from Clubhouse II and returns on Thursday, May 21, at approximately 3:30 p.m.

Send a check(s), payable to NA'AMAT, to Trudy Stone at (15101 Interlachen Dr., Apt. 801, Silver Spring, MD 20906). Be sure to indicate on your check with whom you will be rooming. If you have any special needs, include that information as well. Questions? Call Trudy at (301-438-0016).

**June
24**

"Tina – The Tina Turner Musical" Lunt-Fontanne Theatre, NYC

Join the **Leisure World Association for African American Culture (LWAAAC)** on a trip to see this riveting musical that follows Tina Turner from her humble beginnings to her transformation into the global queen of rock 'n' roll and an international musical and award-winning icon. The show is a raw and emotional journey performed by Adrienne Warren who rocks the rafters as Tina Turner.

The cost of \$230 per person includes bus transportation, lunch at Negril Village Restaurant in Greenwich Village and admission to the show. Lunch menu includes soup or salad, jerk chicken, jerk salmon or vegetarian pasta, fruit punch, ginger beer, sorrel or soda. The bus leaves Clubhouse II at 7 a.m. and returns approximately 9:30 p.m.

To reserve seats, payment (checks only, payable to LWAAAC) must be paid by Wednesday, April 1. Payments may be placed in the LWAAAC slot in Clubhouse I E&R office. Include a telephone number and email address with payment. For additional information, contact Juanita Sealy-Williams, program committee chairperson, at (301-822-4531).

**June
26**

"Anchors Aweigh" Severn River Cruise, MD

Rossmoor Women's Club (RWC) has planned a river cruise that RWC trips chairperson Carol Freibert describes as "a great opportunity for pure enjoyment."

The six-mile, 90-minute, riverboat excursion offers scenic views and sights of the Annapolis Harbor and the banks of the U.S. Naval Academy.

The cost, \$90 per person, includes luxury motor coach transportation from Clubhouse II, cruise and a choice from four different boxes lunches.

The bus departs Clubhouse II at 10:30 a.m. and returns at approximately 4 p.m.

To make a reservations, call Eyre Bus, Tour and Travel at (800-321-3973, ext. 4).

Club Trips (cont.'d)

Aug.

20

Harris Crab House and Amish Market

Join the **Going It Alone Club (GIAC)** on a trip to Harris Crab House in Grasonville, Maryland, for an all-you-can-eat feast of crabs, steamed shrimp, fried chicken, corn-on-the-cob, cole slaw, potato salad, assorted pies for desert, coffee, tea and soda, plus \$2 draft beer at the cash bar. On the return trip home, we will stop at the Amish Market in Annapolis to shop for fresh fruit and vegetables, gifts and handmade crafts, home décor, and fudge and candy.

The cost is \$86 for members, \$96 for non-members, and includes transportation, taxes, dining and driver gratuity.

The bus departs at 10 a.m. from Clubhouse II and returns at approximately 5 p.m.

Sign up at Saturday Afternoon Live (SAL) from 1:30-3 p.m. in Clubhouse II. For more information, call Joe Parker at (301-598-3457).

Oct.

14

Harrington Casino Harrington, DE

Join the **Going It Alone Club (GIAC)** for a day of gaming at the Harrington Casino. The trip includes \$15 in slot play and a \$7 buffet credit (at the discretion of the casino, and subject to change).

The cost is \$28 for members and \$38 for non-members and includes transportation and driver gratuity.

The bus departs at 10 a.m. from Clubhouse II and returns at approximately 6 p.m.

Sign up at Saturday Afternoon Live (SAL) from 1:30-3 p.m. in Clubhouse II. Bring your casino card number, if you already have one, at sign-up. For more information, call Joe Parker at (301-598-3457).

Attention, Travelers!

All Leisure World travelers please note that no group on travel can park more than 12 vehicles overnight/long-term in the Clubhouse II parking lot. Also, parking overnight/long-term is at the owner's own risk.

OUR LADY OF GRACE CHURCH



During this difficult time, let us pray for all who are affected, in one way or another, by the COVID-19 virus, and may God keep us all safe.

*Our church will be open for private prayers
from 7:30 to 3:30 daily*

Daily Mass - 8:00 AM – EWTN CH. 945

Sunday Mass - 10:30 AM – WDCW CH. 23

15661 NORBECK BOULEVARD
SILVER SPRING, MD 20906
301-924-0067
OURLADYOFGRACE@COMCAST.NET



Hearing is one of the joys of life. **Don't neglect it!**



From left: Kathryn Balestino-Estes, AuD., Dr. Heather Schwartzbauer, M.D., Allyson Bull, AuD., Dr. Nicholas Mehta, M.D., Dr. Cynthia Chrosniak, M.D.

We have a team of audiology doctors and otolaryngology physicians who work together in two convenient locations to help you.

MEET OUR AUDIOLOGISTS

Dr. Kathryn Balestino-Estes and Dr. Allyson Bull

- Comprehensive and personalized evaluations
- The latest digital hearing instruments from leading manufacturers
- Solutions to fit your hearing needs, lifestyle, and budget
- Many insurance plans offer hearing aid benefits

We are conveniently located in the Professional Building in the Leisure World Shopping Center above Sandy Spring Bank.

LEISURE WORLD PLAZA
3801 International Drive
Silver Spring, MD 20906,
Suite 206

PROFESSIONAL OFFICE BUILDING
18111 Prince Phillip Drive
Olney, MD 20832, Suite 224

CALL TODAY TO SCHEDULE AN APPOINTMENT!

301-774-0074

WWW.MONTGOMERYCOUNTYENT.COM

\$300 Off
a pair of digital hearing aids

\$400 Off
a pair of digital hearing aids when
you upgrade your existing aids



Montgomery County **ENT**
EAR, NOSE AND THROAT SPECIALISTS

Drs. Chrosniak, Schwartzbauer and Mehta, M.D.

EYRE Leisure World Travel

Travel & Tour Department • (301) 598-1599 • Tuesday, Wednesday & Thursday 8:30 am-2:00 pm
Reservations can be made Monday through Friday, 8:30 am-5 pm by calling 301-854-6600 #4
For more detailed itineraries, please see the Eyre Representative at the Eyre Leisure World Travel Office.

DAY TRIPS

Stein Mart and Leesburg Outlets, VA

Mon., 4/20, 9:15 am-4:30 pm\$40.00 per person
Transportation only.

"Murder at Mount Hope Mansion," PA

Sun., 4/26, 9:15 am-7:15 pm\$117.00 per person
Accept this invitation to a sumptuous meal and the opportunity to become a detective! Transportation, meal and show included.

Brandywine Museum & Chaddsford Winery, PA

Mon., 5/4, 8:45 am-7:15 pm\$110.00 per person
A museum of regional and American art housed in a 19th-century grist mill, the Brandywine River Museum is well-known for its collection of three generations of Wyeths, American illustration, landscape painting and still life. A lunch voucher is included at the museum, and then it's off to the Chaddsford Winery for a tour and tasting.

Mother's Day Out, Peddler's Village, PA

Wed., 5/6, 9:00 am-8:15 pm\$93.00 per person
Enjoy lunch at the Kling House Restaurant followed by a wine tasting at Mount Hope Estate Winery.

Springfest, Ocean City, MD

Sat., 5/9, 7:45 am-9:15 pm\$65.00 per person
Enjoy the event with unique arts and crafts under four huge big-top tents, plus a variety of delicious food and entertainment. Transportation only.

Longwood Gardens, PA

Mon., 5/11, 7:15 am-6:00 pm\$79.00 per person
Enjoy all the spring flowers and fountains. Admission and transportation included. Lunch on own at onsite café.

Strawberry Festival, Peddler's Village, PA

Sat., 5/16, 8:45 am-7:00 pm\$69.00 per person
The festival includes strawberry-themed food, drinks, live music, food trucks and artisans! Transportation only.

Backroads to Freedom: Harriet Tubman, MD

Tues., 5/19, 8:15 am-7:30 pm\$135.00 per person
Visit the museum and learn about the Conductor of the Underground Railroad. Lunch included.

"Queen Esther," Sight and Sound Theatre, PA

Fri., 6/12, 9:45 am-9:15 pm\$159.00 per person
Lunch at Hershey Farm prior to the show included.

Ellis Island & Statue of Liberty, NY

Sat., 6/13, 7:15 am-11:00 pm\$113.00 per person
Trip includes ferry tickets, admission and \$10.00 Cracker Barrel gift card.

New York Your Way, NY

Sat., 6/20, 6:15 am-11:15 pm\$75.00 per person
Transportation only.

Moshulu & Barnes Foundation, PA

Sat., 6/20, 7:35 am-7:40 pm\$145.00 per person
Enjoy lunch served aboard The Moshulu, a 103-year-old clipper sailing ship, before exploring the collections at the Barnes Museum. Lunch, transportation and admission to museum included.

The National Marine Museum, VA

Mon., 6/22, 8:45 am-4:45 pm\$65.00 per person
The National Museum of the Marine Corps is a lasting tribute to U.S. Marines — past, present and future. Lunch at Devil Dog included.

Smith Island Cruise, MD

Tues., 6/23, 8:15 am-9:15 pm\$120.00 per person
Looking for a day out on the water and visiting a quaint island in the middle of the Chesapeake Bay — this is it! Lunch included.

Arlington National Cemetery, VA

Wed., 6/24, 9:15 am-5:15 pm\$113.00 per person
Lunch at McCormick & Schmick's prior to heading over to catch the tram ride of Arlington National Cemetery. Dress for the weather and uneven terrain.

Severn River Cruise, MD

Fri., 6/26, 10:30 am-4:00 pm\$90.00 per person
If you love the water, you will enjoy this 90-minute cruise on the Severn River. Boxed lunch included.

NEW "Jersey Boys" at Fulton Theatre, PA

Wed., 7/8, 8:45 am-7:00 pm\$120.00 per person
"Jersey Boys" takes you up the charts, across the USA and behind the music of Frankie Valli and The Four Seasons. Trip includes transportation, lunch at Shady Maple Smogasbord and ticket to show.

Hillwood: Roaring 20's, DC

Thurs., 7/9, 10:15 am-4:45 pm\$60.00 per person
Hillwood founder Marjorie Merriweather Post was an iconic tastemaker during the era known as the Roaring Twenties. Lunch on own at café onsite.

The Leisure World Eyre office is closed due to the virus.

Call 301-854-6600 x3252, or email (EllenK@eyre.com)

MULTI-DAY TRIPS

Ocean City Adventure, MD

June 7-10

Cape Cod, MA

July 19-23

Constitution Tour, VA

Aug. 6-8

Yellowstone, Grand Tetons & Mt. Rushmore

Aug. 13-21

Maine Lighthouses & Lobster

Aug. 9-14

Niagara Falls, Canada

Sept. 1-4

Africa and Safari Adventure

Sept. 9-20

Pittsburgh, PA

Sept. 13-14

Adirondacks, NY

Sept. 13-17

Vermont and New Hampshire

Oct. 10-15

Iceland – Land of Fire & Ice

Oct. 21-27

Portugal & The Douro River Cruise

Oct. 28-Nov. 7

Tournament of Roses Parade

Dec. 30-Jan. 3, 2021

CRUISES

Carnival Cruise

July 19-26

Seven-night Eastern

Caribbean cruise

MSC Seaside out of Ft. Lauderdale

Aug. 15-22

Caribbean cruise

Royal Caribbean

Sept. 17-26

Nine-night Canada/New

England cruise

Caribbean Princess

Nov. 15-22

Western Caribbean cruise

We can book any cruise line anywhere you want to cruise.

(All Trips depart from Clubhouse II)

Some trips require a certain amount of walking. The shoe symbol  provides an indication of how much walking may be involved.

Key:



Easy Walking



More Walking



A Lot of Walking

Eyre at Leisure World Travel Office, located in Clubhouse I, is a department of Eyre Bus, Tour & Travel. We offer a full service travel agency that specializes in airline reservations, cruises, group tours, vacation packages, hotel accommodations and auto rental. We have been providing "Excellence in Travel for 70 Years."

INCLEMENT WEATHER POLICY: Please call 301-598-1599 after 7 am on the day of a trip to find out if we have cancelled, postponed or are going. If a trip is cancelled, you will also receive a phone call from us once the office is open.

SPORTS, GAMES & Scoreboards

■ Pickleball Club

Will Travel for Pickleball

by Dee Berkholtz

Over the past month, members of the Pickleball Club have been traveling the East Coast in their search for more pickleball.

Barb Shavatt and Jane Ruane left the Maryland winter to visit and play pickleball with some of the Club's snowbirds. They met up with Wendy Flannery, Bill Bullough, Paul Scheible and Lenny Sammarco in sunny Florida, renewing friendships and playing pickleball outside in the warm weather.

Club member Susan Crawford traveled to Delaware to join 169 other pickleball players from the mid-Atlantic region to compete in the

"March Madness" tournament sponsored by the First State Pickleball Club.

As a representative of Leisure World's Pickleball Club, Crawford had a very successful tournament, winning a bronze medal in the 3.5, 70+ women's doubles event with partner Boe Harris from Delaware and a silver medal in 3.5, 60+, 70+ mixed doubles with partner Barry Wilcox II from Maryland. Congratulations to her!

Pickleball at Home

Meanwhile, resident Club members continue to share the Activity Room in Clubhouse II with other organizations. Even though there is competition for access to the room, the Club is still able to schedule at least

six or more indoor playing times per week.

Members are reminded to attend the spring Club meeting on Friday, March 20, at 5 p.m. in Clubhouse II unless notified otherwise.

Also this month, the Pickleball Club is participating in a "Shoe Box" drive sponsored by the Greater Capital Area Association of Realtors to collect personal hygiene products for the homeless. Many Club members are expected to either make online financial contributions or to donate items by the end of the collection program, Friday, March 27.



Club member Susan Crawford and Barry Wilcox pose with the silver medals they won in the 3.5, 60+, 70+ mixed doubles event. Photo courtesy Susan Crawford

tions going with Club membership by sending out periodic messages such as playing tips and suggestions on "how to be a good partner."

These messages are sent out via email, but are also posted on the Club's website at (www.lwpickleball.net).

Weekly emails containing the upcoming scheduled playtimes are also sent to registered Club members. Members who have not yet registered online and paid their 2020 dues are urged to do so

as soon as possible in order to continue receiving these communications.

For more information about the game of pickleball or the Pickleball Club, visit (www.lwpickleball.net).

Club Communications

Club president Scott Keenum keeps communica-

■ Volleyball Club

Social and Competitive Games Played Indoors

by Jody Bonn

Volleyball Club games continue through the winter and spring months in the warm waters at the indoor pool in Clubhouse II.

Social games are played Friday and Saturday afternoons. Residents are welcome and encouraged to come and play or watch. Social games are played with minimal rules, multiple hits, extra serves and no scorekeeping. Thursday evening games are played with traditional rules, but social

players are welcome to play.

Competitive games are played on Monday and Wednesday evenings and Sunday afternoons. Traditional rules of play and scoring are in effect. Experienced, above average players are preferred.

Anyone interested in finding out more about the Volleyball Club should contact Jody Bonn at (bonnjody@hotmail.com).

Note: As of March 14, the indoor pools are closed until further notice.

GOOD TO KNOW: GOLF IN SESSION

by Leisure World News

A walking path encircling the first three buildings of Greens I and II offers breathtaking views of the golf course and nearly intersects with the golf path.

Walkers are reminded, though, not to cross over onto the golf path any time between 8:15 a.m.-5 p.m., the hours when golfers are playing. For the safety of all residents, the golf path is reserved for golfers and golf carts during these hours.

■ Tennis Club

April 2: Club Kicks Off 2020 Season with Meeting and Happy Hour

by Rose Arnold

The Tennis Club is celebrating its 33rd year and growing, so get your racquets out and your tennis shoes shined.

The Club kicks off its 2020 season on Thursday, April 2, with a happy hour at 6:15 p.m. followed by a meeting in Clubhouse II. Members and those interested in checking out this lively group of active players are all welcome to attend.

The Club sponsors play days during the week for beginners to advanced players and a well-attended round robin. The Club has several social events throughout the season including a pizza party, ice cream social, picnic and end of season dinner. More details on the Club's meetings, play dates and social activities will be made available at the April 2 meeting.

Join the Club and get involved with Leisure World tennis. The Club meets the first Thursday of the month during the season. The membership fee is \$10 a year.



Photo by Leisure World News

Rolling Rocks Rocket to First Place

by Rita Mastrorocco

The league is based on handicaps with averages for the bowlers ranging from 85 to 180. If you have not bowled in years, come out and join the fun.

The top league standings as of March 6 are Rolling Rocks in first place, Winners in second place and Huggers in third place.

Top scores for the week of Feb. 28 are:

- Scratch Game – Wild Things, 636 pins
- Scratch Series – Huggers, 1,843 pins
- Handicap Game – Rolling Rocks, 932 pins
- Handicap Series – Rolling Rocks, 2,696 pins
- High Average Men – Steve Mueller, 180 pins

- Scratch Game Men – George Izumi, 199 pins
- Scratch Series Men – Bill Garrett, 562 pins
- Handicap Game Men – Bill Garrett, 262 pins
- Handicap Series Men – Bill Garrett, 769 pins
- High Average Women – Chris Porter, 163 pins
- Scratch Game Women – Chris Porter, 201 pins
- Scratch Series Women – Chris Porter, 517 pins
- Handicap Game Women – Rita Mastrorocco, 259 pins
- Handicap Series Women – Bea Morrissey, 690 pins

- High Average Women – Chris Porter, 164 pins
- Scratch Game Women – Chris Porter, 201 pins
- Scratch Series Women – Chris Porter, 535 pins
- Handicap Game Women – Chris Porter, 253 pins
- Handicap Series Women – Cathy Flinchbaugh, 712 pins

You do not need to be a good bowler to join. Come and join us for fellowship, fun and easy exercise. There is no long-term commitment.

The league bowls every Friday with practice starting at 9:20 a.m. at Bowl America, located at 1101 Clopper Road in Gaithersburg.

The cost for the three games of bowling, the use of bowling shoes and balls, and unlimited cups of coffee is only \$11. If interested in joining, call Rita at (301-814-9196).



Top scores for the week of March 6 are:

- Scratch Game – Huggers, 650 pins
- Scratch Series – Huggers, 1,893 pins
- Handicap Game – Lightnin Strikes, 913 pins
- Handicap Series – Lightnin Strikes, 2,651 pins
- High Average Men – Stene Mueller, 180 pins
- Scratch Game Men – Bill Garrett, 216 pins
- Scratch Series Men – Bill Garrett, 570 pins
- Handicap Game Men – Bill Garrett, 283 pins
- Handicap Series Men – Bill Garrett, 771 pins

■Tuesday and Friday Duplicate Bridge

Compiled by Jerry Miller

Flight A includes all players. Flight B includes only ACBL member pairs, each less than 1,000 master points. Flight C includes only ACBL member pairs, each less than 500 master points.

Tuesday, Feb. 25, 2020

North-South Flight A	East-West Flight A
-------------------------	-----------------------

- | | |
|--------------------------------------|------------------------------------|
| 1. Aaron Navarro – Stephan Billstein | 1. Hanna Schepps – Marlys Moholt |
| 2. Wendy Morrison – Vern Skinner | 2. Leanna Gipson – Judy Tankersley |
| 3. Allen Shaw – Patti Anschutz | 3. Saul Penn – Elaine Conway |

Flight B	Flight B
----------	----------

- | | |
|----------------------------------|------------------------------------|
| 1. Wendy Morrison – Vern Skinner | 1. Leanna Gipson – Judy Tankersley |
| | 2. Abigail Murton – Dora Levin |

Friday, Feb. 28, 2020
One winner only

Flight A	Flight B
----------	----------

- | | |
|-----------------------------------|----------------------------------|
| 1. Diane Keiper – Nadyne Cheary | 1. Jack Carney – Helen Montanaro |
| 2. Dora Levin – Mark Lavine | |
| 3. Aaron Navarro – Judith Perrier | |
| 4. Jack Carney – Helen Montanaro | |

Tuesday, March 3, 2020

North-South Flight A	East-West Flight A
-------------------------	-----------------------

- | | |
|---|--|
| 1. Aaron Navarro – Gerald Lerner | 1. Alfred Caponiti – Frederic Caponiti |
| 2. (tie) Allen Shaw – Patti Anschutz | 2. Hanna Schepps – Robert Catlett |
| 2. (tie) Stephan Billstein – Angela Riani | 3. Saul Penn – Elaine Conway |

Flight B	Flight B
----------	----------

- | | |
|-------------------------------------|-------------------------------------|
| 1. Stephan Billstein – Angela Riani | 1. Madhav Deshmukh – Beena Deshmukh |
| | 2. Susan Weiss – Sue Swift |

Friday, March 6, 2020

North-South Flight A	East-West Flight A
-------------------------	-----------------------

- | | |
|---------------------------------|----------------------------------|
| 1. Diane Keiper – Nadyne Cheary | 1. James Cowie – Marcia Fletcher |
| 2. Mark Lavine – Dora Levin | 2. Murat Berk – Saul Penn |

Flight B

2. Julie Marquette – Barbara Gifford

All duplicate bridge and newcomers games are canceled through March.

■Wednesday Night Chicago Bridge

Compiled by Abigail Murton

Feb. 26, 2020

- 1. Abigail Murton and Doug Brasse, 4,280
- 2. Marcia and Monroe Elbrand, 2,500

March 4, 2020

No game played.

■Thursday Afternoon Ladies Bridge

Compiled by JoAnn Gellman

Feb. 27, 2020

- 1. Judith Lane, 3,620
- 2. Vicky Shaz, 3,590
- 3. Marilyn Jordan, 2,820

March 5, 2020

- 1. Shirley Gilmore, 3,800
- 2. Sally McGowan, 3,690
- 3. Delores Shapiro, 3,480

■Friday Bridge

Compiled by Shirley Rosenhaft

Feb. 21, 2020

- 1. Sunny Levin, 3,190
- 2. Shirley Rosenhaft, 2,670
- 3. Bob Stromberg, 2,580
- 4. Belle Lieberman, 2,570

Feb. 28, 2020

- 1. John Hashim, 2,380
- 2. Betty Hecht, 2,190
- 3. Janet Danziger, 2,110
- 4. Bob Stromberg, 1,830

Going Round in Chess

by Bernie Ascher

The latest fad in city architecture is the Ferris wheel. Cities now feature the Ferris wheel, once regarded merely as an amusement park ride, as a tourist attraction – a giant observation tower with cabins or gondolas – to gain a special view of the city.

The Ferris wheel is named after the man who invented it: George Washington Gale Ferris Jr., a civil engineer. He designed and built a giant wheel for the World's Columbian Exposition in Chicago in 1893. It was a highlight of the fair, the tallest attraction (264 feet), and could carry 2,000 people at a time, somewhat similar to the centerpiece of the Paris Exposition of 1889, the Eiffel Tower (1,063 feet).

The Garden City Observation Wheel Company filed a lawsuit against Ferris, alleging that he copied the invention of William Somers, a carpenter from Atlantic City, New Jersey, who built

50-foot wooden wheels in Asbury Park and Atlantic City, New Jersey, and Coney Island, New York in 1892, and secured a patent for his "Roundabout" in 1893.

Ferris prevailed in the patent infringement case. The court ruled that the "Roundabout" lacked the technology of the giant wheel.

The London Eye, opened at a strategic location along the River Thames, made Ferris wheels fashionable as sightseeing attractions in major cities around the world. Dozens of cities have built giant observation wheels since then.

Originally designed as a new landmark to celebrate the millennium, the London Eye opened in March 2000 and soon became the most popular paid tourist attraction in the U.K., enter-

taining more than 50 million visitors since then.

It took six years to build at a cost of £70 million. At a height of 443 feet, it was the tallest Ferris wheel in the world at the time. It has 32 cars, numbered 1 to 33, skipping number 13 (not because of superstition, of course). It costs £30 per person or roughly \$37 for a 30-minute ride.

At 550 feet, the largest Ferris wheel in the world currently is the Las Vegas High Roller, but the "Ain Dubai" observation wheel in the United Arab Emirates, due for completion in October 2020, will become the largest at 820 feet.

Since 2000, several cities in the U.S. have erected observation wheels, including Seattle, Las Vegas, Orlando and Washington, D.C. Construction of the 180-foot Capital Wheel at National Harbor, Maryland, on the Potomac River waterfront cost \$15 million. A 200-foot wheel will open later this year in St. Louis. New York has scrapped plans to build a 630-foot wheel in Staten Island. Before 2000, Chicago, Santa Monica and Dallas constructed huge wheels.

Canadian cities with giant wheels built after the London Eye include Niagara Falls and Toronto. China has observation wheels in several cities (Zhengzhou, Changsha and Nanchang), including a unique wheel built on a bridge in Tianjin.

Other large cities with huge wheels include Singapore, Osaka, Fukuoka, Kuala Lumpur, Delhi, Belfast, Dublin, Melbourne and Budapest. The Ferris wheel in Vienna, Austria, constructed in 1897, is the oldest in the world.

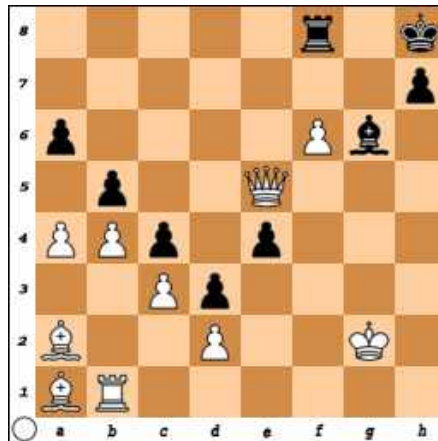
If you play chess on a Ferris wheel, you will miss the view and be distracted from the game, an unsatisfactory situation. Most players prefer to play seated in a room that does not move.

In the game shown on this page, it is White's turn to move. What is White's best move?

The solution follows our reminder that the Chess Club meets on Monday, Wednesday, and Friday from 1-4 p.m. in Clubhouse II. For further information, call Bernie Ascher at (301-598-8577).

SOLUTION: White moves the Pawn to f7. Checkmate!

So, do not wait for construction of new Ferris wheels. Do not wait for a tour of the world's giant observation wheels. Do not wait for a Roundabout ride. Play chess now!



FREDRICK A. ISAACS, M.D., P.C., FACS BOARD CERTIFIED OPHTHALMOLOGIST

Latest Advances in Cataract Surgery including the Restor® & LenSx (Femtosecond)
Treatment of Glaucoma & Macular Degeneration
(Avastin, Lucentis & Eylea Injections)
Complete Exams and Contact Lens Exams

Full Service Optical Shop Glasses, Sunglasses, Contact Lenses

We offer the latest diagnostic equipment for assessment
of retinal disease and glaucoma.

ON PREMISES: Visual Fields, Cirrus HD - OCT,
Fluorescein Angiography, Stereo Disc Photographs,
Corneal Pachymetry and Topography.



**3801 International Drive, Suite 208
Silver Spring, MD 20906
301-598-8500**

LEISURE WORLD PLAZA PROFESSIONAL BUILDING

EMERGENCY APPOINTMENTS AVAILABLE

Sports, Games & Scoreboards In Brief

Bid Whist: Do you know what Sport the Kitty, Boston Time and Rise and Fly all mean? If you like to play Bid Whist, then meet us on Mondays at 6 p.m. in the Clubhouse II Multi-purpose Room. Questions: Call Jessie at (314-374-4501).

Bridge:

• **Tuesday and Friday Duplicate Bridge** games are at 7 p.m. in Clubhouse I. New players with partners are welcome. Hand records and results are available after the game on (thecommongame.com). If in need of a partner, call Shirley Light at (301-598-6611) at least 24 hours before the game. Questions? Call Aaron Navarro at (301-598-3870).

• The **Wednesday Night Chicago Bridge Group** is looking for new members. The group meets every Wednesday in Clubhouse I. Play begins promptly at 6:45 p.m. Bring a partner and be ready for a few hours of friendly games. Questions? Call Doug at (301-448-8708).

• **Men's Bridge** seeks players. The group meets Mondays and Thursdays at 12:30 p.m. in Clubhouse II. No partner needed. Women welcome. Call Alan Levine at (301-288-7349).

• **Thursday Ladies Bridge** welcomes more card players. If interested, call JoAnn Gellman at (301-351-2391).

Chess: For free chess lessons for beginners or "rusty" players, call Bernie Ascher at (301-598-8577) to schedule an appointment. The Chess Club meets every Monday, Wednesday and Friday from 1-4 p.m. in Clubhouse II. Membership is free.

Cribbage: Players meet for 150 minutes of competitive fellowship on Thursdays at 9:30 a.m. in Clubhouse II. There are cards and cribbage boards, and members would be pleased to teach you the game. It is a mixture of rummy and pinochle and is pure fun. (The group does not even keep score.) For more information, call George at (301-598-9747) or Bill at (301-598-7270).

Duckpin Bowling: Join the Duckpin Mixed Bowling League on Mondays at 12:30 p.m. at White Oak Bowling Lanes (11207 New Hampshire Ave., Silver Spring). The group needs bowlers of all skill levels and will welcome you into this enthusiastic group. Members carpool regularly, so non-drivers need not stay away. Call Lisa Zarou at (301-814-0029) or Flora Wolf at (301-598-5807) to join as a substitute or regular bowler.

Jigsaw Puzzle: There is a jigsaw puzzle table in the Clubhouse II lobby. Feel free to work on it at your leisure.

LW Golf Club: The Men's Golf League's opening day tournament is Wednesday, April 1. The 9-Hole Ladies' opening day is Tuesday, April 7, and the 18-Hole Ladies' is Thursday, April 9. For membership information, call the pro shop at (301-598-1570).

Mah-jongg: Learn how to play mah-jongg. Call (301-598-3438).

Mind-Body Exercise Club: Members meet every Thursday afternoon from 2-3 p.m. in the Clubhouse II Activities Room to study and practice mind-body exercises under a leader. Interested Leisure World residents can join the club by paying a \$5 per person initiation fee. If you have any questions, call Judy Menkes at (301-847-9643).

Ping-Pong Club: Get healthy exercise and camaraderie playing ping-pong. The club meets Mondays and Wednesdays from 3-5 p.m. and Fridays from 1-3 p.m., in the Clubhouse II Ping-Pong and Meeting Room in Clubhouse II. Drop in anytime during that period. Some experience preferred. Questions? Call Julie at (301-598-5424) or email her at (julie12401@netscape.net).

Pinochle Players: Experienced Pinochle players wanted. Members play Mondays beginning at 5 p.m. in Clubhouse II. If interested, call (301-401-3103) or (301-598-6740). If you are interested in learning, you are welcome to observe.

Poker:

• **Poker Game** openings are available at the Greens, Thursdays from 7-10 p.m. No prior experience necessary. If interested, call Marcel at (240-486-6205).

• **Men's Poker** is seeking new members. Play is daily, beginning around 9 a.m. in the Game Room in Clubhouse II.

• **Play Poker** Mondays and Thursdays from 1 p.m.-4:30 p.m. in the Clubhouse II Game Room. The group plays hi/low only (two winners). Call (301-598-4331) or (301-434-6823) or come observe.

Thursday Night Poker meets every Thursday from 6-9 p.m. in Clubhouse II. Members play hi/lo, with or without wild cards, dealer's choice. All are welcome. Leisure World residents preferred. Call Dave at (301-598-7064) for information or just come and join us.

Scrabble: Please join players at Clubhouse II on Tuesdays at 12:30 p.m. for a game of Scrabble. Boards are available. Call Arlyne at (301-438-7442) if you are interested in playing.

We listen to your story.

Assisting Hands® provides **dependable** and **compassionate** in-home care, including:

- Care matching
- Engaging activities
- Safety monitoring
- Transportation
- Specialized dementia programs



Call now for your **Help+Alert™ Pendant*!**



Assisting Hands®
Home Care

Give us a call at

301.363.2580

www.assistinghands.com/potomac

License #R3925. Licensed as a Residential Service Agency by the Maryland Department of Health and Mental Hygiene, Office of Health Care Quality. *Certain restrictions apply. Free Assisting Hands® Help+Alert™ pendant with at least 18 hours of service. Call for details. ©2020 Assisting Hands® Home Care, Nampa, Idaho 83687. All Rights Reserved.



Doug Brasse
Realtor
An authorized
Leisure World
Specialist*

Let me introduce you to the Leisure World® Experience

- A friendly 55+ resort community with a "country club feel"
- Amenities include golf course, pools, tennis, hobbies & more
- Named #1 in **Best Value Communities** by 55places.com
- Extensive choices of floor plans; pricing to fit every purse.



See my Zillow 5-Star ratings at dougbrasse.com and check out my listings on Facebook.

Thinking of joining the Leisure World community? My expertise and years of experience can help you make the best choice for the best price. Contact me today at 301-448-8708 (cell); 301-681-0550 (office); dbrasse@weichert.com (email).

My results since 2017

44 units SOLD • 31+ Listings • 6 Rentals



*Leisure World® is a registered trademark owned by RRLH, Inc. Doug Brasse is authorized by RRLH, Inc., under license to use the Leisure World® service trademark.



LEISURE WORLD

HAS SO MANY WAYS TO KEEP UP WITH COMMUNITY NEWS AND EVENTS:



Leisure World News

- Community News
- Calendar of Events
- Calendar of Meetings



Resident Website (residents.lwmc.com)

- Community News
- Community Calendar
- News Alerts



Community Email

- available upon sign up to (residents.lwmc.com)



Recorded Daily Events (301-598-1313)

Mobile Access to (residents.lwmc.com)

Social Media

- Twitter | @LeisureWorldMd
- Facebook | Leisure World of Maryland



TV Channels

- 972 - Daily Events and Announcements
- 974 - Weekly Events and Meeting Broadcasts

Your tomorrow self will thank you.

Loan discounts. Superior rates. Waived fees.

Signal Bundles^{1,2} reward you for your loyalty with exclusive benefits—so you can **earn more, save more**, and be prepared for life's key moments.

As an added benefit, you'll gain access to our **LinkRewards**³ program that allows you to earn points on debit card purchases, birthdays, membership anniversaries, and loans.

Connect⁴

When all you need are the basics, take home something better.



“Thanks to the Connect Bundle, I get rewarded for doing everyday things like buying groceries. I then use my points for gift cards for restaurants and presents for my kids!”

—Mike, 61

Direct⁵

Your everyday banking, borrowing, and building routine is solid. (Your rewards should be, too.)



“With the discount I got on my car loan, I can put away a little extra every month for my granddaughter. Those savings are growing even faster with the Direct Money Market. I plan to help her open a membership too.”

—Lucy, 66

Premium⁶

For the serious savers and financial fanatics, bountiful benefits are only natural.



“I came to Signal to get a share certificate and ended up getting a lot more! With the appraisal fee refund we got on our mortgage, plus the other discounts, we've got the best of both worlds.”

—Daniel, 73

Discover which bundle is right for you.

Visit signalfinancialfcu.org/banking/signal-bundles or talk to a branch representative today—your tomorrow self will thank you.

Our Leisure World Branch is located in the Administration Building.

signalfinancial
Federal Credit Union

¹ Bundles are not available for Business, Estate, or Representative Payee membership account types. Unless otherwise specified, all advertised offers and terms and conditions of accounts and services are subject to change at any time without notice. After an account is opened or a service begins, it is subject to its features, conditions and terms, which are subject to change at any time in accordance with applicable laws and agreements.

² Monthly fees may reduce earnings. Monthly fees could bring your balance negative if there are not enough funds available in your account. Your Signal Bundle relationship may be downgraded and/or your share account(s) closed if your share account balance(s) is/are negative for 90 days or more. Other transaction and service fees, including insufficient funds and overdraft fees, may apply. See our Fee Schedule for more information.

³ Points-based rewards program. To learn more, visit signalfinancialfcu.org/linkrewards.

⁴ \$10 monthly maintenance fee waived when member maintains a minimum \$250 average monthly balance in Connect Checking or completes a minimum of five (5) debit card purchases per month. Average monthly balance is calculated by taking the sum of the daily end of day balances in the calendar month and dividing the sum by the number of days in the month. Debit card purchases are completed when they post to the checking account. Pending purchases are not considered completed purchases.

⁵ \$10 monthly maintenance fee waived when member receives a minimum of \$500 in monthly direct deposits to Direct Checking AND does one of the following: maintains a minimum \$250 average monthly balance in Direct Checking or completes a minimum of five (5) debit card purchases per month. Excludes ME2ME, person-to-person transfers, and ACH transfers from individuals (including those facilitated by internet payment providers). Average monthly balance is calculated by taking the sum of the daily end of day balances in the calendar month and dividing the sum by the number of days in the month. Debit card purchases are completed when they post to the checking account. Pending purchases are not considered completed purchases.

⁶ \$25 monthly maintenance fee waived when member maintains a minimum combined \$25,000 average monthly balance in share accounts (excluding share certificates) OR has an open Signal Financial FCU mortgage product (mortgage or home equity). Average monthly balance is calculated by taking the sum of the daily end of day balances in the calendar month and dividing the sum by the number of days in the month.

Note: If the primary member is under the age of 18, account maintenance fees will not be charged. See Membership Disclosure for credit union membership qualifications and eligibility.
Federally insured by NCUA. Equal Housing Lender.

CLASSES & Seminars

Sign-up will be taken for newly advertised classes beginning on the Tuesday after the date of the edition of Leisure World News in which it appears. All sign ups begin at 8:30 a.m. in either Clubhouse I or II as noted in the class description. Residents can register for themselves and two other residents. **Please bring your Leisure World ID.**

If required enrollment is not met five days prior to the start date, the class will be canceled.

*****Please note fees for non-residents: add \$10 for 1-6 session classes and \$20 for classes of 7 or more sessions.**

Payment can be made by check or credit card (MasterCard, VISA or Discover); no cash is accepted. Checks *must* be made payable to Leisure World of Maryland Corp. Please sign up in advance of the starting date of the class since instructors need to know how many will participate. **Note: Registration will not be accepted nor refunds issued after the completion of two sessions!**

Leisure World does not discriminate on the basis of race, color, national or ethnic origin in admission policies, education policies or programs.

EDUCATION

Celebrating the 19th Amendment: 2020 is the centennial of the signing of the 19th Amendment to the U.S. Constitution, which granted women the right to vote. Participants will watch and discuss the documentary film "One Woman, One Vote."

Also included is an optional trip to the National Archives Museum in Washington, D.C.

For additional information, contact Betty Smith, MLS, at (240-605-1512).

Class meets Thursdays, April 2-16, 2-4 p.m. **Fee: \$15** (includes a pocket-sized edition of the Constitution and hand-outs). **Register at Clubhouse I.**

Geography Up Close: Regional Landscapes of the U.S., a CLL course:

Across its vast spaces, the U.S. has great landscape diversity. This diversity is partly the result of physical factors, such as landforms and climate. But a place's landscape is also made by the people who live there. The U.S. lured many people of many cultural heritages, and these heritages blended with those of indigenous Native Americans. The landscapes they created drew on disparate histories and were subject to many distinct environmental conditions.

One way that geographers are able to study and make sense out of all of this is

through regional analysis. In this course, participants will examine the entire nation, looking at uniform regions, which will be multi-featured, representing an area's combined physical and/or cultural elements.

The regions to be covered include megalopolis, bypassed East, manufacturing core, Appalachia and the Ozarks, agricultural core, emerging South, southern coastlands, Great Plains, empty interior, Southwest border, Alaska and Hawaii, and California and the West Coast.

The course will be led by geographer/community planner Tom Conger.

Class meets Tuesday, April 14-May 19, 1-2 p.m. **Fee: \$15. Register at Clubhouse I.**

For more information about the Center for Lifelong Learning (CLL) and its instructors, visit (www.clldmd.com).

DANCE INSTRUCTION

NEW – Intermediate Tap with Mary Lou: This class will include warm-up barre exercises, center room exercises (combos and balance) progression steps and a dance routine.

Instructor Mary Lou Peters started dancing at the age of three. At 17, she started dancing professionally, worked on a TV show of 16 years and has been

teaching dance ever since. Class meets Thursdays, April 2-30 (no class April 9), 6:30-7:30 p.m. **Fee: \$40. Register at Clubhouse II.**

Social and Ballroom Dancing: Led by resident Alan Packer, participants will learn how to dance the fox trot, jitterbug, waltz, rumba, tango, samba, mambo, electric slide, macarena and more.

Class meets Thursdays, April 2-June 4, 7-9 p.m. **Fee: \$15. Register at Clubhouse II.**

EXERCISE

NEW – Mild Exercise with Shirley: All exercises, seated or standing, are led by instructor Shirley Lloyd.

Class meets Tuesdays, April 14-May 19, and Wednesdays, April 15-May 20, 11-11:45 a.m. You can take the class on Tuesdays or Wednesdays, or sign up for both days. **Fee: \$38, one day per week; \$63 for two days per week. Register at Clubhouse II.**

NEW – Senior Sneakers: Get up and go with a safe, heart-healthy cardio workout that is gentle on the joints. The workout includes easy-to-follow low-impact moves and upper-body strength training. Have fun and move to the music through a variety of exercises designed to increase your cardio fitness level, strength, range of movement, and activities for daily living. Bring your hand-held weights and work at your own pace.

Class meets Mondays (with Shirley), April 13-May 18, and Thursdays (with Sue), April 16-May 21, 9-9:45 a.m. You can take the class on Mondays or Thursdays, or sign up for both days. **Fee: \$38 for one day per week; \$63 for two days per week. Register at Clubhouse II.**

Chair Yoga with Robin, Mondays or Wednesdays: Age well. Prevent or diminish the chronic degenerative disease processes that frequently accompany aging. Gentle, yet effective, move-

Millennium Home Care Services

- Medication Management Reminder
- Companion Care
- Meal Preparation
- Bathing, Grooming and Personal Hygiene
- Transportation to and from Doctors Visit
- Help of Activities of Daily Living
- 24 hours care / Live-in Caregivers
- Nurse Supervision
- Screened Caregivers

FREE FALL ASSESSMENT AND NURSE CONSULTATION!!!

www.myvisitingrn.com
info@myvisitingrn.com

12221 Parklawn Dr
#205 Rockville MD 20852
Phone: (301) 355-0260

ments done while sitting in a chair. Increase joint mobility, balance, flexibility, strength, tone, circulation of blood and lymph, and improve breathing. Optional standing balance exercises included. Relaxing and fun! Mindfulness training is introduced and basic holistic lifestyle habits discussed.

Instructor Robin M. Hartman, C-IAYT, CHHC, RYT, PTA, is licensed to perform physical therapy in the state of Maryland. She is also a certified holistic health coach, registered yoga teacher and certified yoga therapist. She will answer questions after class or can be reached at (240-350-8820).

Class meets Mondays, April 6-June 8 (no class April 27 or May 25) or Wednesdays, April 1-June 3 (no class April 8 or May 6), 2-3 p.m. Choose the day that suits your schedule.

Fee per session: \$110. Register at Clubhouse II.

Gentle Yoga – Wednesdays and Saturdays with Marilyn: Yoga is a holistic system that combines movement, posture, breath and relaxation techniques to improve overall health and well-being physically, mentally, and spiritually. A consistent yoga practice has been shown to increase mobility, strength and flexibility, and to provide skills to cultivate a peaceful mind in the face of life's stresses and challenges.

This class is designed for individuals with some ability to get up and down off the floor and can be adapted according to the need of the practitioner. Beginners and ongoing students are welcome. Bring a yoga mat or blanket to the first class.

Class meets Wednesdays, March 25-June 10 (no class April 29 or June 3) and/or Saturdays, March 21-May 30 (no class April 25), 9-10:15 a.m. **Fee: \$84 for one day per week; \$145 for two days per week. Register at Clubhouse I.**

WATER EXERCISE

NEW – Water Exercise with Nancy: Participants will gain strength, stamina and tone from this cardio class. Dumbbells are used, although

they are not required, and are available for purchase from the instructor.

Class meets Tuesdays, April 14-May 19, and Thursdays, April 16-May 21, 11 a.m.-noon. You can take the class on Tuesdays or Thursdays, or sign up for both days. **Fee: \$38 for one day per week; \$63 for two days per week. Register at Clubhouse II.**

NEW – Non-impact Fusion Water Exercise with Shirley or Sue: This class is held in the round leisure pool (warm water). Dance, yoga poses, and cardio movements are all fused together to give students an awesome, fun class. Participants will improve their posture, balance, flexibility and muscle strength.

Class meets Tuesdays, April 14-May 19, and Thursdays, April 16-May 21, 1-2 p.m. You can take the class on Tuesdays or Thursdays, or sign up for both days. **Fee: \$38, one day per week; \$63 for two days per week. Register at Clubhouse II.**

NEW – Aqua Fit with Shirley: This unique class blends the best of both worlds using water aerobics and yoga. Water aerobics is done in the lap pool for 30 minutes, focusing on cardio and strength. The class then moves to the social warm water pool and finishes up with yoga stretches that focus on balance and posture.

Class meets Wednesdays, April 15-May 20, from 1-2 p.m. **Fee: \$38 for one day per week; \$63 when taken with one day of another water class. Register at Clubhouse II.**

Low interest rates getting you down? Let's talk.

William P Mason IV, AAMS®
Financial Advisor
17904 Georgia Ave Ste 107
Olney, MD 20832
301-774-8500
www.edwardjones.com

Edward Jones
MAKING SENSE OF INVESTING

Member SIPC

Navigating Alzheimer's as the Family Caregiver

A Free Dementia Caregiving Seminar

Back by Popular Demand

Thursday, April 2, 2020

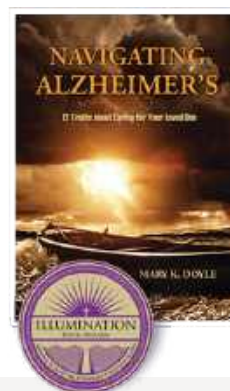
1:00 pm - 2:30 pm

Location:

The Inter-Faith Chapel at Leisure World
3680 S. Leisure World Road
Silver Spring, MD 20906

RSVP by calling 301.847.3051 or e-mailing SilverSpring@arden-courts.com

Arden Courts 
Memory Care Community



Featuring Guest Speaker Mary K. Doyle
Author, *Navigating Alzheimer's*

Caring for someone with Alzheimer's disease is like navigating a voyage on the high seas. The journey requires steady, ongoing mental and physical stamina as well as heavy doses of love and patience. During this seminar, Mary Doyle will help travelers on this path.

Ms. Doyle speaks from a point of more than a decade of experience caring for her husband with Alzheimer's as well as her investigation into the disease and its caregiving requirements. She will honestly describe the challenges caregivers face and offer guidance.



arden-courts.com





THIS SPRING ... *Start a New Journey*

Whether it's strolling winding paths or socializing in sunny courtyards, residents of Assisted Living at Brooke Grove experience a warm, vibrant lifestyle and delight in our charming setting of open meadows and airy trees.

OUR AMENITIES

- ✿ Private rooms filled with sunshine from over-sized windows and skylights
- ✿ 24-hour on-site clinical support from licensed and caring nurses
- ✿ Secure courtyards and walking paths
- ✿ Ornamental koi pond
- ✿ Manicured flower and sensory gardens
- ✿ Playground for visiting kids

MEMORY SUPPORT PROGRAM

For residents with Alzheimer's or dementia, we offer a special assisted living option with:

- ✿ Specially trained memory support staff
- ✿ An interactive lifestyle that maximizes choice and independence
- ✿ Tailored LIFE® enrichment programming that connects each resident to his or her past
- ✿ Group activities that allow residents to enjoy the outdoors and a thriving social life



18100 Slade School Road
Sandy Spring, MD 20860
301-260-2320 or 301-924-2811

www.bgf.org



CALENDAR *of Events*

**Dial 301-598-1313
for recorded Daily Events**

Please keep in mind that many clubs, groups and organizations are taking precautions against COVID-19 (coronavirus) by canceling or postponing their upcoming meetings and programs. For the latest cancelations, check TV channels 972 and 974.

Friday, March 20

Clubhouse I
No Scheduled Activities.
Clubhouse II
No Scheduled Activities.

Saturday, March 21

Clubhouse I
No Scheduled Activities.
Clubhouse II
8:00 a.m. Pickleball Club

Sunday, March 22

Clubhouse I
No Scheduled Activities.
Clubhouse II
11:30 a.m. Pickleball Club

Monday, March 23

Clubhouse I
No Scheduled Activities.
Clubhouse II
12:30 p.m. Men's Bridge
5:30 p.m. Pickleball Club

Tuesday, March 24

Clubhouse I
No Scheduled Activities.
Clubhouse II
12:30 p.m. Pickleball Club
2:30 p.m. Pickleball Club:
Conditioning Class
2:30 p.m. Unitarian Universalists:
Program's Speaker Provides
Status of the Women's Movement
4:00 p.m. Pickleball Club:
Beginner's Clinic
7:00 p.m. Camera Club: Photo
Competition

Wednesday, March 25

Clubhouse I
No Scheduled Activities.
Clubhouse II
8:00 a.m. Pickleball Club
5:15 p.m. Pickleball Club

Thursday, March 26

Clubhouse I
2:00 p.m. Memory Café
Clubhouse II
9:30 a.m. Quilting Group
11:30 a.m. Pickleball Club
12:30 p.m. Men's Bridge

Friday, March 27

Clubhouse I
3:00 p.m. Hispanos de LW: Bingo
Clubhouse II
10:00 a.m. Chinese Club
4:00 p.m. Pickleball Club

Saturday, March 28

Clubhouse I
No Scheduled Activities.

Clubhouse II
No Scheduled Activities.

Sunday, March 29

Clubhouse I
No Scheduled Activities.
Clubhouse II
11:30 a.m. Pickleball Club
Monday, March 30
Clubhouse I
No Scheduled Activities.
Clubhouse II
10:00 a.m. Clipper Workshop
12:15 p.m. Pickleball Club
12:30 p.m. Men's Bridge
5:30 p.m. Pickleball Club

Tuesday, March 31

Clubhouse I
No Scheduled Activities.
Clubhouse II
12:30 p.m. Pickleball Club
2:30 p.m. Pickleball Club:
Conditioning Class

Wednesday, April 1

Clubhouse I
11:00 a.m. Short Story Group
4:00 p.m. LWAAAC General
Meeting
Clubhouse II
8:00 a.m. Pickleball Club
10:00 a.m. Zumba Gold Class
10:00 a.m. MVA Mobile Office
2:00 p.m. Chair Yoga Class
5:15 p.m. Pickleball Club
5:30 p.m. Model Railroad Club
Operating Session

Thursday, April 2

Clubhouse I
11:00 a.m. Writers of Leisure World
2:00 p.m. Celebrating the 19th
Amendment Class
3:00 p.m. Stamp and Coin Club
6:00 p.m. Lawn Bowling Club
Clubhouse II
9:30 a.m. Beginner and Advanced
Tai Chi Class
10:00 a.m. MVA Mobile Office
11:30 a.m. Pickleball Club
12:30 p.m. Men's Bridge
1:30 p.m. Gilbert and Sullivan
Society
2:00 p.m. Model Railroad Club
Operating Session

Friday, April 3

Clubhouse I
3:00 p.m. Hispanos de LW: Bingo
Clubhouse II
1:00 p.m. Zumba Gold Class
4:00 p.m. Pickleball Club

Leisure World Mutual Meetings

March 25
Mutual 20B Board
9:30 a.m., Party Room 3

March 26
Mutual 10 Board
9:30 a.m., Sullivan Room
Mutual 20A Board
9:30 a.m., Party Room 1
Mutual 26 Board
10:30 a.m., Party Room
Mutual 24 Board
1:30 p.m., Community Room

March 27
Mutual 17B Board
10:00 a.m., Party Room

March 30
Mutual 23 Board
10:00 a.m., Party Room

March 31
Mutual 17A Board
2:00 p.m., Party Room
Mutual 6B Board
2:00 p.m., Clubhouse I
Mutual 21 Board
2:30 p.m., Community Room 3

April 1
Mutual 8 Board
10:00 a.m., Sullivan Room

April 2
Mutual 27 Board
10:00 a.m., Community Room

Meeting times and locations subject to change. Sign in to (residents.lwmc.com) and check the calendar for any changes. Mutual board meetings are open to respective mutual residents and absentee owners.

Meetings of the LWCC Board of Directors, Executive Committee and Advisory Committees

All LWCC governance meetings (board of directors, executive committee and advisory committees) are canceled until further notice. Check (residents.lwmc.com) or channel 972 for updates.



HELP STOP THE SPREAD OF CORONAVIRUS

from The World Health Organization

1. Hands: Wash them often

2. Elbow: Cough or sneeze into it

3. Face: Don't touch it

4. Feet: Stand at least 3 feet apart

5. Feel sick? Stay home

CLASSIFIEDS

THE LEISURE WORLD of Maryland NEWS reserves the right to reject or discontinue any advertisement believed inimical to the best interest of Leisure World. The News shall accept advertising on the same basis as other reputable publications: that is, it shall not knowingly permit a dishonest advertisement to appear in the Leisure World of Maryland News, but at the same time the News will not undertake to guarantee the reliability of its advertisers.

The News recommends that before a resident engage any service herein advertised, that the resident request and verify applicable credentials (i.e. bonded, licensed, insured) and references.

For information on placing advertisements in the Leisure World News, email (lwnewsads@lwmc.com) or call (301-598-1310).

HELP WANTED

401K PLAN AUDITORS: Great opportunity for retiree looking to keep skills sharp. We need experienced auditors for the upcoming season. At least 3 years' experience with 401k plan audits or similar audits is desired. Seasonal work, April through October, full- or part- time. Pay \$35 to \$50 per hour. Contact Bernard Bethke at (bbethke@bethkecpa.com) if you are interested and qualified.

WANTED

FAST CASH FOR USED CARS — Big dollars paid for your used car! Over 43 years' experience serving Leisure World. Please call; available 24 hours. I will come to you. Cash or cashiers' check at your request. I can also help with your new car purchase, any make or model! MD Dealer #U2927. Call Marty Salins (301-325-1973).

WILL BUY MILITARY, WWII,

WWI, Civil War memorabilia items. Uniforms, weapons, helmets, photos, medals or any other items associated with U.S., German, Japanese or other military history. Call Dave (240-464-0958) or email (david.obal63@gmail.com).

CASH FOR JEWELRY: gold, silver, costume, diamonds, coins (including foreign), watches, stamp collections. (theatticllc.com) Gary Roman (301-520-0755).

TURN YOUR STERLING SILVER and old gold jewelry into cash and do something good for yourself. Gold 4 Good (8241 Georgia Ave., Ste. 100, Silver Spring, MD 20910) buys gold and silver jewelry, including broken pieces, all sterling silver, gold watches and gold and silver coins. I will come to your house and give you a free evaluation of what I can pay. Gold 4 Good pays an additional five percent to all sellers who are veterans of the U.S. Army, Air Force, Navy or Marine Corps. And we extend the same courtesy to their spouses. We honor our servicemen (and their spouses). Gold 4 Good is a Maryland licensed precious metals dealership, not a pawnshop or private home-based business. If you decide to sell, I can buy your items at that time, but there is no obligation. Licensed with both Maryland and Montgomery County (lic. #2327). Call Bob (240-938-9694).

WANTED: FIREARM COLLECTIONS, one piece or one hundred, licensed local dealer will come to you. Contact Richard Thornley at (301-253-0425).

WANTED! DIABETIC TEST

STRIPS. Top dollar paid! Cash on the spot! We need OneTouch, FreeStyle Lite and Accu-Chek, unopened and unexpired. Can pick up. Please call Debbie at (301-598-4862) or (410-279-3342).

Paying cash for MERCHANDISE PRE-1980s. Old toys, record albums, silver and coins, Zippo lighters, pocketknives, first-edition books, smoking pipes, advertising items, mid-century furniture, lamps and clocks, Florsheim shoes. If you have old stuff to sell call or text pictures to Carl. (312-316-7553). Located in Silver Spring.

ESTATE SALES

LEISURE WORLD ESTATE SALE. April 9, 10 and 11. Go to (estatesales.net); look for Leisure World for details. Call Cheryl (301-437-2705) for questions.

CASH FOR ESTATES. I buy a wide range of items: jewelry, art, rugs, etc. Buy out/clean up. (theatticllc.com) Gary Roman — (301-520-0755).

ATTIC TO BASEMENT ESTATE Cleanouts LLC — I provide honest and confidential estate cleanouts with reasonable rates. I assist executors, family members and guardians with a personal touch. I will save you time and money providing fast, efficient service. I work with local auction and hauling companies. Please call or email me to set up an appointment. Janet Ray (301-384-3198), (wishalot10@aol.com).

LOOKING TO DOWNSIZE, move or sell all household items or just a few? What about that storage unit? Call Estate Sales by Cheryl, LLC! Let's get started making you a profit! (301-437-2705)

REAL ESTATE FOR SALE

FOR SALE: 1 bedroom (635 sq. ft), coop ownership, sunroom addition, beautiful view, end unit, \$69,000 *** Berkley model townhome. Updated kitchen, beautiful floors, lovely flagstone patio, park right out front. Close to Main Gate, Inter-Faith and Clubhouse I. \$180,000. *** Big and beautiful! 3 bedrooms and 2 full baths, steps to the elevator, garage space, extra-large enclosed balcony, hardwood floors, updated kitchen, fresh paint, new carpet. Low \$300,000s. Douglas Realty, (866-987-9397). Call Eve Rados Marinik, (301-221-8867), (evemhomes@gmail.com).

REAL ESTATE WANTED

CURRENT RESIDENT in search of a 1-bedroom. Quiet, courteous, clean, respectful of others and property. References upon request. No realtors, please. Prefer to communicate with owner. (301-438-1128) or (boomers4lw@yahoo.com).

NEED 1-BEDROOM with bath in Leisure World. I'm a quiet resident in LW for the past 15 years. Need unit for months of April and May. Contact (301-598-8630) or (LouisKatsouros@gmail.com).

REAL ESTATE FOR RENT

APARTMENT FOR RENT. 3501 Forest Edge Drive, #3F, in Leisure World. 1 bedroom, 1 full bath and a half, patio. Looks out to the woods. \$1,600 negotiable. Contact Samuel or Bernadette at (301-622-4925).

3 BEDROOM, 2 FULL BATH patio home with eat-in kitchen, 1 car garage. Furnished. Utilities included. \$3,950 per month. Call (410-868-1110).

GARDEN TWO-BEDROOM, two-bath condo available for lease. Premier community of Leisure World for adults 55 plus! This condo features fresh paint, side-by-side washer/dryer and new granite kitchen countertops. Living room with a spectacular view and a large patio. Call (301-598-6451) to schedule an appointment to see this exceptional home. No smoking! Pets considered. A reserved parking space, utilities, basic cable and basic internet are included.

LW GARDEN APARTMENT: 15101 Glade Dr., 2-F, 1 bedroom, 1 full and 1 half bathroom, recent updates, balcony, 1 carport parking space, storage area. Rent includes all utilities, basic cable

CALL PHYSICAL PROPERTIES

at 301-598-1500 and ask for
Willson's Showroom

**Kitchen
Bath
Painting
Flooring**

All Interior Renovations

Providing renovation services exclusively
for residents of Leisure World!

WILLSON'S
Leisure World Renovations

Call us directly at
301-598-1348

TV and internet. No smoking. Small dog considered. \$1,600 per month. Call Nancy (301-529-2606).

2 BEDROOM and 2 FULL BATH, G Model with garage in Fairways North. Hardwood floors, updated kitchen and baths! \$1,975 per month. *** 1 bedroom and den, ADA walk-in shower. Hardwood floors, fresh paint. \$1,475 per month. Douglas Realty, (866-987-9397) Call Eve Rados Marinik, (301-221-8867), (evemhomes@gmail.com).

FOR SALE

MOBILITY "GOLDEN" four-wheel scooter, with headlight and side mirror, for sale, great condition, \$900, OBO. Located at the Greens II. Call Joyce at (301-385-1041) for information.

AUTO SALES

2016 TOYOTA CAMRY LE. Four-door. MD-inspected, like new. Only 13,500 miles. One owner. \$16,499. I will buy your car even if you don't buy mine. Dealing with Leisure World for 43 years. Licensed and bonded. Cash or cashier's check for your car, van or truck. Please call Marty Salins at Auto Plaza (301-325-1973).

FAST CASH FOR USED CARS — Big dollars paid for your used car! Over 43 years' experience serving Leisure World. Please call; available 24 hours. I will come to you. Cash or cashier's check at your request. I can also help with your new car purchase, any make or model! MD Dealer #U2927. Call Marty Salins (301-325-1973).

TRANSPORTATION SERVICES

HAVE CAR, WILL TRAVEL. Flat rates to all airports. \$45 to and from Dulles. \$45 to and from BWI. \$45 to and from Reagan National. Union Station, doctors' appointments. Call John Westmoreland (301-536-5801).

YOUR PERFECT PRIVATE DRIVER is right here! Lifetime DC Metro resident. Friendly, reliable, competent service. Safe, accident-free record. Comfortable, clean vehicle can seat up to six passengers. Airports, cruiseports, trains, theatres, casinos, restaurants, festivals, ceremonies, medical appointments... To/from anywhere, including long-distance trips in other states. Reservations are recommended. Call 7 a.m.-10 p.m. with questions or to arrange/guarantee your ride. Available 24/7. Emergency calls, if needed. Steven Saidman. Cell/text (301-933-8899). Email (steve.your.driver@gmail.com).

NEW: EASY RIDES. Mutual 14 resident. Airport, local, long-distance rides, introductory 10% discount off any estimated quote,

Lyft, Uber or others, 24/7. Call Kevin Vincent (301-466-5162), 2016 Kia Soul, or John Carter (301-801-8800), black Cadillac sedan. Over 50 years of driving experience in DC, VA, MD area. Cash or check only.

A-1 SERVICE, call-and-ride — doctors, airport. \$35. Will pick up your groceries. Always on time. Over 250 satisfied customers from Leisure World. Call all night for emergencies also. Larry Kraft (240-743-8287).

DRIVER WITH CONCIERGE STYLE at regular rates. I am a Leisure World resident and I understand the needs of our community. My service is a four-door Mercedes-Benz sedan with all the comforts of a leather-seat luxury car, temperature-controlled interior, ample trunk space and a smooth ride. Most important is my dependability and providing any personal assistance you may need. Call Ken at (508-612-9647).

LEISURE WORLD RESIDENT with an accident-free record has brand new car to drive seniors to doctors' appointments, grocery or other shopping, the airports, etc. (Experienced medical transcriptionist can take accurate notes during doctor appointments, if needed). Call CPR- and AED-trained Stephanie Sidella at (301-922-5080) or (ssidella@verizon.net).

DRIVER with 25 years' experience. I am a Leisure World resident. Drive anywhere. Comfortable, smooth, safe. Accident-free record. Clean vehicle. I'm available 24/7. Call or text (703-649-1293).

FLORAL

FLORAL DESIGN AND DELIVERY from a local Kensington shop. Specializing in funerals, celebrations and other occasions. See designs on (districtpetals.com). (202-701-5596), (oscar@petalstothemetal.com).

CAREGIVING AND HEALTHCARE

Healthcare professionals must provide current proof of certification or license from the Maryland Board of Nursing to include "certified" or "licensed" in their advertisement. Examples of positions requiring such proof include, but are not limited to, registered nurse, licensed practical nurse, certified nursing assistant, geriatric nursing assistant and medication technician.

"A" HOME HEALTH CARE for Senior Citizens — Care you can trust and is affordable. Reliable and qualified aide and nursing staff available. Companionship,

personal care, meds, housekeeping, shopping, driving. Full/part-time or live-in. Flat rate for live-in care. Call (240-533-6599).

FLAT RATES, ONE WEEK FREE. "Care You Can Trust and Afford." Reliable, experienced caregiver providing hygiene care, medication reminders, meals, housekeeping, errands, appointments etc. Full/part-time, live-in, overnight or weekend. Call today: (301-490-1146).

ELDERLY CARE: Over 10 years' experience. Great reference. Available for long days or nights. Can drive. Leisure World resident. (240-461-2188).

Augusta Obimpeh is my name. Am a CNA/GNA/MED TECH. I have 16 years' experience caring for elderly. I provide long- and short-term care — very affordable companion care, nursing care, housekeeping, etc. Contact me on (240-883-8126), (240-252-0439) or (301-793-3989). (sweetieamae@yahoo.com)

EXCELLENT CAREGIVER AVAILABLE: Highly competent, trustworthy, flexible, and caring — cared for my parents for over five years. Leisure World resident. Highly recommended. (301-509-7234).

SPECIALITY IN PRIVATE DUTY cases. 20 years' home health services expertise. Light housekeeping, running errands, special needs, doctors' appointments, ADLs, companionship, meal preparation, medication reminders and more! Bebe (240-481-7055).

HIGHLY-DEPENDABLE and extremely compassionate caregiver with 11+ years' extensive experience in providing timely and friendly care to elderly and disabled clients. A warm-hearted individual who performs personal care activities in a manner that maximizes clients' independence and dignity in a safe environment. My core competencies include: • companionship • meal preparation • light housekeeping • bath assistance • general assistance • appointment management • errand-running • personal care • excellent communication skills (bilingual English/Spanish). (301-646-2132), (monicamanzano585@yahoo.com).

WARM ANGELS ELDER CARE (warmangelseldercare.com) — Reana Robinson, independent certified nursing assistant. A minimum of 2 hours. For information please call (240-360-7783) or email (reanar1@yahoo.com).

CNA/GNA/MED TECH with CPR and first aid license. Experience working with elderly. Have worked with agencies, nursing homes and also private duty. Am available full-time or part-time. Please call (240-252-0439), (240-713-1654), or email (sapomadezeus@yahoo.com).

CNA/MEDTECH/CPR with First Aid. Licensed. Experienced working with elderly. Have worked with agencies, assisted living in hospitals and also private duty. Am available full-time or part-time, nights and days. Please call (301-793-7090).

CERTIFIED NURSING ASSISTANT. Over 30 years



Kitchen & Bath Remodeling

301-598-8400

SERVING LEISURE WORLD SINCE 1988
KITCHENS BATHS CUSTOM BUILT-IN CABINETS

Quick Tub — to — Shower conversions
With grab bars and good lighting- safety first!!
Comfort height toilets, shower seats, more...



MHIC# 36674

working in Leisure World. Excellent references and experience. Own transportation. Doctor’s appointments, groceries, other errands and light housekeeping. 24 hours. Please call Divina any time (240-463-1199).

AWARD-WINNING PRIVATE DUTY care — Comfort Home Care is a local family-owned business originally established to care for our own parents. We have been helping families in Montgomery County for over 20 years with all the activities of daily living including bathing, dressing, grooming, transferring, medication reminders and continence care. We also provide companionship with fun activities, exercise, meals, as well as transportation to doctors and other appointments. All our aides are CNA or GNA -certified with full RN oversight and follow-up. We have a flexible schedule, back-up staff, and an excellent support team working to provide quality care. There is no up-front retainer. Our certified nursing assistants can be scheduled from 5 hours to 24 hours daily with a minimum of 15 hours per week. For true peace of mind, call Beth on (301-575-7994) or visit (www.choosecomforthome.com).

CERTIFIED CNA, GNA with 20 years of experience working with the elderly. Honest, very flexible, compassionate and caring. Duties include bathing, feeding, housekeeping, cooking and companionship. I can also provide social, physical, mental and spiritual activities to improve the quality of life of my patients. Call Mary (301-412-6001).

CERTIFIED NURSING ASSISTANT. Over 12 years’ experience working with older adults. Can provide hygiene care, meal prep, laundry, light housekeeping, errands. Available for nights or days. Reference available. Call (240-701-9788).

Hi, my name is Denise. I have been a CAREGIVER for my mother and father for many years. I am very patient and caring. Very reliable and responsible. Love to talk. I can also clean with a big smile. Affordable, part-time. Please call me: Denise (301-237-8874).

CAREGIVER. I’m a LW resident giving a high reference for lady with 15 years’ experience in eldercare. Paulette Samuels provides outstanding full/part-time, live-in, overnight, housekeeping, meals, shopping, appointments, etc. Email Marie (Amoses00@verizon.net) to verify reference or contact Paulette at (240-550-5705).

RELIABLE AND CARING nursing

assistant with good reference available for work and can drive. Please call Rebecca at (240-701-8169).

RELIABLE, PROFESSIONAL and COMPETENT trained caregiver (GNA) and medicine aide (CMA) seeking employment opportunity to provide excellent assistance and care for resident. I am a safe driver and will take you out and work any hours you want, morning, evening and night. (240-755-1516).

CNA. My name is Viviene Heywood. I’m a CNA, also a Med Tech. Looking for private duty. My availability is in the mornings, any time from 8 a.m.-3 p.m. (301-351-1072).

CAREGIVER WITH CNA license and 10 years’ experience. Available to work daytime, nighttime and weekends, full-time or part-time. Have own transportation. Millicent (240-839-2356).

8 YEARS’ EXPERIENCE CAREGIVER. One-on-one or companionship. My availability: night shift, Monday-Sunday. Morning is as needed only. Starting payment from \$16 and up. (240-765-4024) Evelyn

CERTIFIED CNA/GNA looking for work. Lots of tender loving care. Honest, hardworking and God-fearing person. 20 years’ experience. I have worked in a hospital for 14 years. Senior living homes–10 years. Nursing agency–seven years. Call Florence (240-595-7971).

ELDERLY CARE: CNA/CMT/ nursing student. 11-12 years’ experience in elderly care. Hospital, nursing homes and home care. Duties: ADLs, driving to doctors’ appointments, housekeeping, meal preparation and safety precautions. Great references. Monday-Sunday, 24 hours availability. (301-820-2631), (301-978-6518).

PRIVATE HOME CAREGIVER (starting at \$20/hour). Marie Thorogood, CNA. • Hygiene, cleaning and dressing • Client’s laundry • Daily physical activities • Maintain client’s medical history logs • Meal prep • First Aid/CPR. (301-537-7958), (angietgood42@gmail.com).

ASSISTED LIVING

JOINED HANDS ASSISTED LIVING, a gorgeous senior living place in Gaithersburg, MD. We chose the art of caring and we do it with passion! Call to schedule a tour: (240-550-5861). Visit us at (www.joinedhand.com).

ASSISTED LIVING: a professional, dependable and affordable care community on nearby Bel Pre Rd. We provide

24-hour, 365-day service, such as homemade meals, laundry, bathing, toileting, medication administration and recreational activities. We also provide skilled nursing care, such as complicated diabetes care, peg tube feeding and wound care. Resident-centered care is a reality in our loving community. Contact Ms. Cai at (301-801-6510) for more information.

HOME SERVICES

KITCHEN and BATHROOM REMODELING – Cabinet and countertop replacement, and bathtub to accessible shower conversions. Please call Joe at JML Remodeling. (301-598-8400). Serving Leisure World since 1988. MHIC# 36674. Thank you.

STAIR LIFTS: Never walk up steps again! Buy new or certified pre-owned stair lifts at reduced prices. Installation, lifetime warranty and free service contract included. Call (301-448-5254).

CONTINENTAL MOVERS. Local moving services. Free boxes. Local – long distance – hauling – pick-ups and deliveries. \$80 x two men, one hour driving time. (202-438-1489) (301-340-0602) (Cmora53607@msn.com) (www.continentalmovers.net).

POTOMAC WINDOW CLEANING Company — Family-owned and operated for 35 years serving the local area. Careful workmanship. Licensed, bonded and insured. (301-656-9274). The Montgomery family thanks you for your interest.

SMALL MOVES and TRASH-OUTS. Leisure World experienced. Can take items to donation center. Reasonable and insured. Patrick (301-332-4872).

M.G.V. PAINTING & DRYWALL — Interior and exterior painting. Water damage repairs. Minor carpentry and other odd jobs. 30 years’ experience. Insured. References in your complex. Reasonable rates. Call Mike at (301-655-5433) for a free estimate!

COOPER REFUSE–JUNK REMOVAL. Prices starting as low as \$65. Lifting and loading from wherever the item is located. Donation or recycling of all qualified items. Call today and save (301-996-7704)

LANDSCAPING SERVICES: Beautifying LW, one property at a time! Affordable, reliable and experienced! Services include power washing, spring cleanup, mulching, landscaping design, weed removal and planting. Call Greg at (240-994-5258), (gmarinik@gmail.com). References provided.

GUARDIAN ANGEL LAWN SERVICE. Experienced in flowerbeds, mulching, edging, weeding, plowing gardens and repairs. For all your gardening and household needs, please call Robert at (240-477-2158), (301-987-1277).

CLEANING SERVICES

R&G CLEANING SERVICES – Small, family-owned business catering to you and your household needs. Friendly, reliable and trustworthy with many years of experience. Reasonable rates and flexible hours. Licensed and insured. Help with household organization. Free estimate with appointment. Call (301-442-5032).

ALICIA’S CLEANING SERVICES – Good references. Good rate. Once a week or every two weeks. (240-286-3807).

UNITED CLEANING GROUP has been a trusty cleaning company used by several Leisure World members over the past 3 years. Call us for your free estimate today! We offer both apartment and home cleanings, garden work and power-washing services. We are extremely flexible: 7 days a week to accommodate your schedule. Give us a call at (240-498-2748) and/or (301-881-0695). We hope to hear from you soon!

MARIA’S HOUSE CLEANING, free estimates, strong references, good rates. Experienced worker in LW for eight years. Call Maria (240-694-6547).

CARE DRY CARPET CLEANING. Experience the difference. Host dry extraction system. Green, clean and dry in 30 minutes. Water damages wood flooring under your carpet. Choose dry cleaning. Call Mike Gonsalves, owner/operator (301-309-9398).

MAEXYS CLEANING SERVICE. We have experience in house cleaning, carpet and window cleaning. Good recommendations. We have worked with customers in LW for many years. Free estimates. You can call or txt at (301-742-3130).

HOUSECLEANING. Available Tuesday, Wednesday and Thursday. Very honest. References. Good price. Free estimates. Maria Elena. Call (301-768-7184).

ELECTRONICS HELP

COMPUTER SERVICES – Problems with your PC or Network? Computer Systems Engineer will come to you with help. Home, Business. Call David G. (301-642-4526).

COMPUTER LESSONS / SERVICES — Need help with your computer or other digital devices in your home? Tablets, smartphones, smart TVs and more. Computer training, new computer

setup, troubleshooting. Lessons at your residence at your convenience. Learn basic computer, email, surfing the web, digital photos. Patient trainer will sit by your side and teach you in plain English — no technical talk! Shopping assistance for electronics and computers. Senior specialist since 1996. Call David at (301-980-5840). **COMPUTERTUTOR**

A+ COMPUTER SERVICES. Free in-house diagnostic of your computer, printer, or basic set-ups. A+ certified, virus removal, back-up, and retrieve important data, photos, and music. Have served over 700 clients in Leisure World. Also will teach lessons on Microsoft Office and basic computer skills at your home. Alex Nowrouzi, (301-312-2277). I reside in Leisure World.

AZ Fix — WE FIX AND RECYCLE all brand consumer electronics. Cell phones, cameras, computers, tablets and TVs. Free diagnosis. In-home services, home pick-up for repair and recycling. Call: (240-560-6779) | Website: (Azfixmd.com) | Address: 2233 Bel Pre Rd.

PERSONAL SERVICES

PRESERVE YOUR FAMILY MEMORIES! Don't let your precious photos be forgotten or fade over time. I'll digitize your photos, slides, and mementos so they can be easily shared with friends and family. Once they're scanned, I can label the photos to identify the people in them, or bring your photos to life in a memorable DVD slideshow. Call Kim at Virtual Computer Services, (301-438-3140).

TIRED OF POLISHING your silver? Turn it into cash, which does not tarnish. I will come to your home and give you a free evaluation of what I can pay. I buy all gold and silver jewelry, including broken pieces, all sterling silver, gold and silver coins, gold watches, etc. I am licensed with both Maryland and Montgomery County (lic. #2327). Gold 4 Good pays an additional five percent to all sellers who are veterans of the U.S. Army, Air Force, Navy or Marine Corps. And we extend the same courtesy to their spouses. We honor our servicemen (and their spouses). Gold 4 Good is a Maryland licensed precious metals dealership, not a pawnshop or private home-based business. If you decide to sell, I can buy your items at that time, but there is no obligation. Call Bob, Gold 4 Good, 8241 Georgia Ave., Ste. 100, Silver Spring, MD 20910 (240-938-9694).

DAHLSTROM SENIOR SUPPORT SERVICES. Assistance with senior care and the care of seniors' pets. Safe/reliable door-to-door transportation as needed. Assistance with pet care. Dog walking and pet sitting as needed.

Transportation for grooming/vet appointments. I'm a 58-year-old semi-retired doctor, Leisure World resident. Bonded, insured, outstanding Leisure World references. Call Carl (410-499-9362).

PERSONAL FINANCIAL SERVICES. Let LJY Solutions provide you with professional cash management and tax preparation services. We take the confusion out of preparing your tax return. We have been servicing the local area since 2004. Reasonable rates, and can come to you. References. Call or email Leon Young today at (301-538-8286) * (leonyoung1507@gmail.com)

LEISURE WORLD RESIDENT with 14 years of LW experience, on top of years of working in health-related fields, has immediate openings. CPR and AED trained, Stephanie enjoys helping seniors with entertaining companionship, light housework, exercising, cooking, driving, etc. (Experienced medical transcriptionist can take accurate notes during doctor appointments, if needed.) Call Stephanie Sidella at (301-922-5080) or (ssidella@verizon.net).

PHOTO RESTORATION. We restore any black-and-white or color photos that are scratched, damaged or discolored. You will love the final fresh-restored printed pictures. Special discount for repeat Leisure World clients. Call Laura or Ionel at (301-598 2536) for a free estimate.

NOTARIES

NOTARY, residing in Leisure World. I offer my service free of charge to Leisure World residents. Can come to your home if needed. (301-379-9694).

PET CARE

DOG WALKING SERVICES — Responsible and dependable Leisure World resident who is available to walk your dog. Also, other pet services available. Affordable rates. Please call (301-598-3454) for more information.

ANIMAL LOVER PET SITTING — Loving hands and warm heart are available for: walks, playtime, baths, feeding and whatever is necessary to ensure your pet is safe and cared for while you are unable to care for them. I am a LW resident and I have a 9-year-old shih tzu. I have years of experience caring for and loving dogs, cats, hamsters and guinea pigs. Please email Cindy at (mspeace1@aol.com) or call (603-262-0353).

In need of **PET SITTING** or **DOG WALKING?** Call Ryan at (301-691-8027). Experienced in giving

medication to pets. References available. Email at (costantino.ryan@gmail.com). Thanks!

DONATIONS WANTED

HOUSING UNLIMITED, INC is a non-profit organization that provides housing for people in mental health recovery. We accept furniture and housewares that are in good condition to furnish our homes. We do pick up. The Housing Unlimited office is (301-592-9314). Thank you.

WANTED: CAR DONATIONS. Support MCPS students by donating your car. Write off up to fair market value! (www.Cars2donate.org) or (240-740-2050).

BOOK SALE and DONATIONS WANTED. You are invited to the American Association of University Women (AAUW) Gaithersburg's Annual Spring Book Sale, April 23, 9 a.m.-8 p.m., April 24, 9 a.m.-8 p.m. and April 25 (Bag Day) 9 a.m.-4 p.m. at Asbury Methodist Village, Rosborough Center Community Rooms, 301 Odendhal Ave, Gaithersburg. The sale and books donations support scholarships for women and mentoring programs for girls and women. Thousands of books: fiction and non-fiction, hardback and paperback, audio books, DVDs, art, kids, cooking, foreign languages, gardening, history, mystery, sci-fi, science, women's studies, African American and Jewish interests, rare and unusual books, etc. Donation pickups can be arranged at any time throughout the year in Leisure World. For more information call Liz at (301-840-1258).

NO LONGER USING YOUR CAR? Residents with an unused or unwanted vehicle can donate it to Vehicles for Change. They'll pick it up for free and you earn a tax deduction for the fair market value. Why VFC? As a nonprofit, they match each donated car with low-income families in need of transportation. Your car could be a family's ride out of poverty. Donate today at (www.vehiclesforchange.org) or call (855-820-7990).

ACTIVITY OPPORTUNITIES

THE KNIGHTS CORNER. The Knights of Columbus is a fraternal Order of Catholic men who are called to lead with faith, protect our families, serve others and defend values in a busy changing world. In Father Peter Paul Maher Council #6793, you will find that Knights of Columbus membership brings Catholic men together in a powerful way to serve our Church and our Community. If you would like to join today simply go to (KofC.org/joinus) and enter our Council #6793. For local information, please contact Fred Taylor at (301-871-8928) or (taylorwf8@verizon.net).

HELLO! I love classical music! If you share this pastime, please call Louise at (301-598-0987).

“INTRODUCTION TO BUDDHISM” — I am a Leisure World resident and practicing Buddhist for 30 plus years. Would you like to learn more about this ancient religion and visit a local temple for lectures? Please leave a message with your number at (240-605-1512). Also you can visit the website at (nstmyosenji.org).

SINGERS WANTED for Alzheimer's choir — Interested in supporting persons with Alzheimer's and dementia by singing with them? Know someone with Alzheimer's or dementia who could benefit from group singing? Enjoy uplifting pop, jazz and Broadway music? Then the All Primetimers Choir is for you! Research shows music enables sufferers to reconnect, regain social skills and live more fully. We are a community choir that welcomes caregivers and friends as well. Rehearsals at 2 p.m. on Thursdays at the Inter-Faith Chapel in Leisure World. All welcome. No audition required. Register: (primechoir@gmail.com) or Bill Pailen (301-606-8273).

NOTICES

KEEPING SENIORS SAFE — KSS. Morton A. Davis, coordinator and resident of Leisure World is available to discuss theft prevention, driving and shopping habits, frauds, home safety inspection and property crimes to any organization. The program is part of the Montgomery County Police Department Volunteer Resource Section. Morton can be reached at (240-706-1850) or (mortonadavis@comcast.net).

VOLUNTEER OPPORTUNITIES

MEALS ON WHEELS is looking for caring and dedicated volunteers to deliver meals to homebound and disabled individuals in the Leisure World area. Service area includes: Leisure World, Olney, Wheaton, Sandy Spring. Please contact Emily Trotter at (443-573-0925) or email (trotter@mowcm.org).

MEALS ON WHEELS (MOW), which runs out of the Inter-Faith Chapel site, needs more volunteers to deliver meals. If you have or know someone who has one and a half to two hours every other week or one time a month and might be interested in serving in this capacity, please contact (410-730-9476).

KOSHER MEALS ON WHEELS, sponsored by JSSA, needs volunteers to deliver nutritious meals to homebound seniors. Volunteers will pick meals up at the Hebrew Home in Rockville and deliver them to seniors in Montgomery County. Schedule is flexible. Call Diane Hays-Earp at JSSA, (301-816-2639).

GRACIOUS RETIREMENT LIVING



*Experience the gracious retirement lifestyle
our residents enjoy each and everyday!*

301-246-8432

WILSHIRE ESTATES
Gracious Retirement Living

13716 New Hampshire Ave, Silver Spring, MD 20904

