

Leisure World News

OF MARYLAND

July 5, 2019 • Published Twice a Month • residents.lwmc.com • leisureworldmaryland.com



Volleyball player Shelagh Hodson bumps the ball to the front row setter during a 2016 Maryland Senior Olympics game. She and her team competed last month in the National Senior Games in Albuquerque, New Mexico. Courtesy photo

A Winning Spirit Takes Volleyballer to National Tournament

by Kimberly Y. Choi,
Leisure World News

On the sixth and final day of the volleyball tournament, the team’s performance was flagging; players kept making mistakes. Shelagh Hodson, co-captain, called a timeout.

Hodson shook her hips and danced into the center of the huddle, singing “Uptown Funk.”

Her teammates laughed. They resumed the game with renewed vigor.

It’s this spirited attitude that

helps Hodson remain dedicated to volleyball after decades of play and keeps her teammates playing well enough to have competed last month in the National Senior Games in Albuquerque, New Mexico.

Staying Heartened

Hodson, who takes the role of team motivator, is a social worker in her professional life who sees clients dealing with end of life and dying.

Difficult emotions drive her on the volleyball court and find their release when she meets

► to page 5

Board Allocates Funds for Golf Course Infrastructure Study

by Stacy Smith, Leisure World News

The Leisure World Community Corporation (LWCC) board of directors approved at its regular June 25 meeting the Budget and Finance and Golf and Greens Advisory Committees’ recommendation that McDonald Design Group Inc. complete an infrastructure study for golf course enhancement.

The study’s cost is not to exceed \$10,000, and its funding will come from the Facilities Enhancement Plan (FEP) fund.

The study will examine ways to improve the golf course’s playability and maintainability, specifically drainage enhancement, and will act as a roadmap for future phased improvements to the course that are provided for in the FEP.

In his memo to the board dated June 14, general manager Kevin Flannery outlined information about the timing and need for the study, which was requested by the board at its regular meeting in May.

Insurance Policy Renewal

The board accepted the Insurance Advisory Committee’s recommendation to approve the master insurance policy renewal dated May 20, 2019 with a corrected premium amount of \$2,493,083, including the cyber liability policy, with a limit of \$1,000,000.

The renewal’s 2.4 percent increase is based on an increase

in labor costs and in the replacement value of Leisure World’s buildings, which increase every year, according to Flannery.

Travelers insurance has extended Leisure World’s directors and officers liability coverage, which provides legal defense funds, but has increased the deductible from \$25,000 to \$35,000.

“Leisure World paid its deductible back in the fourth quarter of last year and since that time all of the costs for legal have been borne by the insurance company,” Flannery said.

Governance

After a lively debate, a motion directing members of the LWCC executive committee not to serve on any advisory committees beginning January 2020 failed to pass, with 16 board members opposing the motion, 11 in favor of it and one abstaining.

Some board members and visitors expressed a desire to see other residents participate in committees to bring forth new ideas and methods, while others suggested term limits and succession plans for board members.

Charter Changes

The board approved the Audit Advisory Committee’s recommendation to adopt its revised committee charter dated June 25, 2019 after making a slight adjustment to the order of the charter’s content.

► to page 6

INSIDE	Governance & Information	8	Sports, Games &	
	Thoughts & Opinions	10	Scoreboards	42
	Events & Entertainment	12	Classes & Seminars	46
	Movie Schedule	13	Calendar of Events	49
	Health & Fitness	20	Governance Meeting	
	Clubs, Groups &		Schedules	49
	Organizations	22	Classifieds	52
	Club Trips Listing	39		

Help point Leisure World toward its future by completing the strategic planning survey. For details, **see page 4.**

Spotlight on...

Ballroom Dance Club

by Kimberly Y. Choi,
Leisure World News

Jim Leong used to stay home when his wife, Ida, went ballroom dancing. He never attended dances in school either because he thought he was too much of a “nerd.”

Indeed Leong, with his technophilic mind that he puts to use chairing the Technology Advisory Committee, readily likens the connection between ballroom dance partners to a smart gadget that helps seniors who live alone stay in touch.

Leong’s wife eventually convinced him to put his analogy to the test by going dancing with her, and he found he was surprisingly good at it.

Taking Steps

In fact, after dancing for only two years, Leong’s instructors urged him and Ida to demonstrate a tango during intermission at a Ballroom Dance Club event. Traditionally, only more experienced dancers take the stage at that time to perform for everyone in attendance.

“That was high-risk,” Leong says.

He put considerable effort into practicing. When the event drew closer, he felt unable. His knowledge of what to do on the

dance floor seemed unreachable that day. His instructor advised him not to think about it before the event came.

He ended up very satisfied with the tango he had pulled off. To Leong, taking risks is a healthy part of continuing an active lifestyle as one ages.

“You don’t want to retreat into your shell and do less and less,” he says. “Quite the opposite: you want to try new things.” He encourages older people to try dance and other activities that challenge them.

Club members do not need to be advanced dancers. Some are beginners who take part while enrolled in their first lessons outside the Club.

“A lot of people don’t dance because they don’t think they can dance,” fellow dancer George Moy says, “but dancing is not that much different from walking.”

Moy explains that ballroom dance is both physical and mental exercise, strengthening the legs as well as the capacity to either make decisions as the leading partner or react accordingly as the following partner.

Taking Hands

Beginning to dance was, for Moy, an act of renewal. After a period of recovery from the loss of his wife, he began to be drawn to Leisure World’s dance groups.

At the time, the Ballroom Dance Club had little room for people without partners. Moy and his friend Hal Freeman brought together a group of widows and singles he knew who were interested in dance, nicknaming themselves ‘the Swingles,’ which became part of the Club.

Singles are now eligible for Club membership. It is easiest if they attend with a dance partner, but they can also find other Club members to dance with.

Stepping in rhythm alongside somebody has helped several of the Club’s singles find love, while others find good friends.

Back when Moy was actively recruiting single dancers, he met Janet Rowe, who had taken lessons on the hustle. She taught him some hustle moves. Now the two are partners off the dance floor as well.

Club Activities

The Ballroom Dance Club holds monthly dances from January to November. The Club sometimes partners with the Fun and Fancy Theatre Group, and the Leongs performed in the Group’s tribute to Irving



Ballroom dancers George Moy and Janet Rowe are partners on and off the dance floor. Photo by Semoon Chang

Berlin last month.

Several Club members recently went to the Stardust ballroom dance resort in New York. They enjoyed dances and dance classes all weekend long.

The Club’s own events are open to all residents. July’s dance is on Saturday, July 27, from 7:30-10:30 p.m. in the Clubhouse I Crystal Ballroom.

To make a reservation, email Hal Freeman at (bobinhal@aol.com) or call (301-438-7513).

**ASPEN HILL
EXXON**
301-871-6777



Auto Care

www.aspenhillexxon.com
14011 Georgia Ave.

Owned and Operated by BENNY Since 1980 "or ask for my son DAN."
Friendly, personal and professional service!

Free transportation home and back when you leave your car for service!

• Complete Automotive Maintenance Service & Repair • Most Makes & Models
• Two Years/24 Month Warranty • Factory Scheduled Maintenance

Auto Service Discounts

Oil Change Service Special - \$29.95

5 Qts of synthetic blend 5W/30 oil

Oil Filter & Lube ♦ Multi-Point Inspection

Most cars, plus tax & disposal fee

Full Synthetic Extra

Present this Coupon with Incoming Order. Expires July 31, 2019

Maryland State Inspection Station

Leisure World News OF MARYLAND

An official publication of the Leisure World Community Corporation, Leisure World News is published twice monthly by Leisure World Staff in collaboration with the Communications Advisory Committee.

Leisure World News is published for the benefit of Leisure World residents. Its mission is to provide news and information about community governance and other relevant issues, events, and activities, and to provide residents a forum for their opinions and an opportunity to contribute articles of general interest. All matters concerning the Leisure World News will be decided with this mission in mind.

Leisure World Staff

Maureen Freeman,

Director of Communications

Stacy Smith, *Senior Editor*

Kathleen Brooks,

Senior Communications Associate

Kimberly Y. Choi, *Communications Associate*

Cassandra Chisholm, *Graphic Designer*

Editorial: lwnews@lwmc.com

Advertising: lwnewsads@lwmc.com

301-598-1310

Communications Advisory Committee

Alan J. Goldstein, *Chair*

Bernie Ascher, *Vice Chair*

aclwn@lwmc.com

Resident Contributors

Mary Catherine Bibro,

Rincy Pollack, Arthur N. Popper

and Marilyn Boesch

Leisure World News of Maryland reserves the right to reject or discontinue any advertisement believed to be not in the best interest of Leisure World.

We will not knowingly permit a dishonest advertisement to appear nor do we guarantee the reliability of advertisers.

Renovated Woodshop Reopens with New Look



Clockwise, from top left: Wood Shop Users Group member Greg Smith shows a sample of the Woodshop's new vinyl flooring to curious guests at the open house June 28; a member's woodworking project is displayed on the CNC machine; the Woodshop's new makerspace houses the group's CNC machine. Photos by Stacy Smith, Leisure World News

The Woodshop in Clubhouse I celebrated its reopening with an open house on June 28.

Residents and friends stopped by to check out the Woodshop's new vinyl floors and "makerspace" – a room where Wood Shop Users Group

members can collaborate on woodworking projects.

The Woodshop had previously been closed for a month to make these renovations, as well as to expand its storage space to accommodate more lumber and a soon-to-be installed lift device.

GOOD TO KNOW: STAYING COMFORTABLE IN SUMMER WEATHER

by Leisure World News

Summer weather can be capricious; one minute it's sweltering outside and the next an unexpected, afternoon shower has broken the humidity.

As a result, some people find that keeping an umbrella on their person or in their car is a smart way to travel. But umbrellas aren't just helpful during rainstorms. Some can also keep you shaded on sunny, summer days.

In fact, many companies make sun protective umbrellas, or parasols, that block harmful UV rays and reduce glare, which could be beneficial to residents who spend a lot of time outdoors.

Likewise, residents who spend time in the air-conditioned clubhouses may want to consider bringing a sweater with them, as older buildings are sometimes more difficult to quickly heat up or cool down.

Stop, Look and Listen



Photo by Leisure World News

A push-button and countdown signal for pedestrians, along with a crosswalk, have recently been added to the existing traffic signal located at the Norbeck Boulevard/MD-28 intersection. The signal is accessible for people with disabilities and allows all pedestrians and bikers to safely cross the busy intersection.

July 20: Golf Course Holds Par 3 Tournament



Photo by Leisure World News

The Golf Course hosts a par 3 tournament on Saturday, July 20, with a shotgun start at 4 p.m. The tournament is open to all residents and their guests.

Players can choose their own teams of up to six players, or sign up solo and have a team assigned to them. The field is limited to 54 players.

The cost is \$15 per player and includes play and light refreshments. Sign up by calling the Pro Shop at (301-598-1570).

– Leisure World News

Interested in advertising in the Leisure World News?

For information: call 301-598-1310 or email lwnewsads@lwmc.com



Committee Surveys Residents to Help Plan Community's Future

by Stacy Smith, Leisure World News

The strategic planning survey is designed to give every resident, including both owners and tenants, an opportunity to anonymously share what they think about the amenities and services available in the community, and what they would like to see in the future.

Do you love using the fitness center and have an idea for another exercise-related amenity? Perhaps security is your main concern and you'd like to see more gate guards at the community's entrances. Or maybe you don't use the outdoor pool all that much but would hate to see it go. Whatever it is that you value about life at Leisure World, say it in the survey!

The data collected from the completed surveys will be analyzed by experts in strategic planning from George Mason University in consultation with the Special Strategic Planning Committee (SSPC) for the purposes of planning for Leisure World's long-term future.

Answering the Survey

The survey was mailed to all homes in Leisure World two

weeks ago and is available online via (residents.lwmc.com). The deadline to complete and return the survey is Wednesday, Aug. 7.

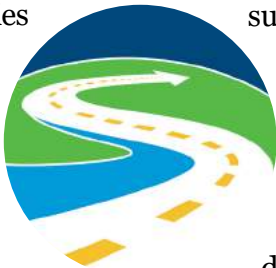
Residents can choose to either type and/or handwrite their responses on the paper survey mailed to them, or sign in to, (residents.lwmc.com) and click on "The Strategic Planning Survey" link located under the "Your Community" dropdown arrow.

The SSPC recommends residents who choose to complete the survey online do so using a computer, laptop or tablet; the survey's format is not optimized for smaller screens, such as a smartphone.

Residents who live in the same household and choose to respond online are asked to use the same device (computer, tablet, etc.) to complete the survey.

The paper survey is designed so that up to two residents per household can complete it. Households that have three or more residents are asked to contact Dr. Terry Clower, project lead, at (lwstrategicplan@gmail.com) or (703-993-8419).

Residents may use either pen or pencil to complete the paper



A large, white envelope containing a paper copy of the Strategic Planning survey was mailed to all units in Leisure World a few weeks ago. Photo by Leisure World News

survey. Also, keep in mind that each resident should complete the survey only once.

Help Available

Residents who need assistance completing the paper survey may attend one or more of the following help sessions:

- July 9 – 1-6 p.m., Clubhouse I
- July 11 – 10:30 a.m.-3:30 p.m., Clubhouse I
- July 16 – 9 a.m.-2 p.m., Clubhouse II
- July 24 – noon-5 p.m., Clubhouse II

Research team members from GMU, SSPC members and resident volunteers will be available to provide assistance in filling out the survey. All help session staff and volunteers have received formal training in ethics as required by GMU's Institutional Review Board (IRB).

Reservations are not required to attend the help sessions. Residents must bring their survey forms with them.

Residents who need special accommodation or assistance completing the survey are asked

to contact Clower or the SSPC to arrange for assistance.

Contacts

Questions about the survey should be directed to the SSPC:

- Email – (sspc@lwmc.com)
- Phone – (240-560-5794)
- Mail – (SSPC attn.: Ernesto Castillo, 3701 Rossmore Blvd., Silver Spring, MD 20906)

Residents who have a question about the strategic planning project may contact Clower at (lwstrategicplan@gmail.com) (email preferred), or call (703-993-8419).

Residents who have questions regarding their rights as a participant in this project may contact GMU's IRB at (703-993-4121), reference # 1446534-1.

Still Need a Copy?

Residents who have not received a paper of the survey in their mailbox are encouraged to ask for a copy at the front desk in the Administration Building.

Please bring your Leisure World ID.

SURVEY IS ALSO AVAILABLE ONLINE

1

Your Community ▾ Amenities & Services

Your Community

The Strategic Planning Survey

Leisure World Governance

Emergency Preparedness

Residents who would like to take the survey online can visit (residents.lwmc.com) and click on "The Strategic Planning Survey" under the "Your Community" dropdown arrow to be taken to the survey's information page.

2

Click [HERE](#) to fill out the Strategic Planning Survey online

Scroll to the bottom of the survey's information page to access the link to the survey. Screenshots by Leisure World News



STOP HERE: ONE LAST STEP

You've taken the time to fill out the strategic planning survey because you are invested in Leisure World's future. But before placing the survey in the self-addressed envelope with prepaid postage and returning it in the mail, check that you have:

- answered all the questions
- printed clearly and/or included a typed response to the final, open-ended question
- refrained from including any identifying information in your responses to the questions, such as your name or the name of your mutual

Volleyball

◀ from page 1

the ball with a powerful hit. In the team environment, she exercises the same penchant for leading and supporting others that emerges in her work with clients.

As co-captain, she leads with a sense of humor and focuses on what her teammates do well. “My style is not to criticize,” she says. “My style is to raise people up and make them better, and that feels good to me.”

She says positive reinforcement works best, especially when everyone is an older player who is well-experienced with the game and needs more motivation than correction. Like all her teammates, Hodson has been playing from a young age. She started in high school and has played mostly continuously through her life.

She keeps in shape by exercising every day and working twice a week with a personal trainer. Her workout includes weight training, jumping and flexibility. She swims, too, also at a high level; she qualified to swim in the National Senior Games as well but did not compete.

This degree of effort is about average for her team, according to Hodson. She says the love of the sport compels them to prolong their fitness for as many years as they can.

At the Games

Hodson was first involved in the National Senior Games at the age of 50 with her team in Ontario, Canada.



At left, Hodson, second from left, poses with her teammates. Courtesy photo. At right, Hodson, third from left, joins her teammates in a huddle. Photo by Pat McConnell



“It’s the closest to the Olympics that I’m ever going to get,” she says. She appreciates that the Senior Games opens and closes with a ceremony, like the Olympics. Athletes carry the symbolic torch that ignites the ceremonial cauldron.

When Hodson came to Maryland, she was quick to find a new club to play with. She joined a senior women’s volleyball club called MD-AU in Catonsville that was looking for an outside hitter or middle, both positions that she played, suitable for her tallness.

At the time, the team was called “Crazy” — Senior Games competitors often choose comical names. Hodson didn’t want a name that brought to mind mental health difficulties as she

sometimes deals with in her work, so she altered it to the more whimsical “KRAY-Z,” evoking rapper Jay-Z.

Last year, KRAY-Z qualified for the National Senior Games by placing highly in the Maryland Senior Olympics.

At the Games last month, the team, who are good friends, rented a house together in New Mexico and enjoyed the travel. KRAY-Z participated in the women’s 55+ and 60+ divisions, the former to accommodate the one member who is under 60.

The mood on the court was tense on the second day of competition. In the 60+ division, the team had won all three games on the first day, but on the second day lost two close matches, threatening its standing.

Those matches were rough for the players’ morale, but Hodson, with her usual approach, roused them to do better the next day. She and the other captain discussed strategic adjustments that could improve their play.

They ended up not doing well in the highly competitive 55+ division, but their persistence led them to fourth place in the 60+ division out of around 40 teams.

According to Hodson, the team came close to medaling but was edged to fourth place due to the structure of the tournament.

Hodson plans to keep up her team’s performance to make it to the next Senior Games in 2021 in Fort Lauderdale, Florida, and to many more games beyond.

JOEL'S EXECUTIVE CAR SERVICE

301-438-9777
301-980-4734 (cell)

- Airport
- Trains
- Doctor Visits

Get the Royal Treatment
Available 24 hours.

Personal Care Services In The Comfort Of Your Home

Family Owned & Operated
Serving Montgomery County

- Household chores
- Medication reminding
- Daily living and companionship
- Meal planning, preparation and monitoring of eating habits
- Overseeing activities, such as walking, to minimize the risk of accidents
- Shopping for groceries, with or without client
- Bathing and grooming and general personal hygiene
- Help with planning and making decisions
- Nursing services and many more!

Call for a Free Consultation and Assessment • 301.717.2212 • www.bestseniorcare.us

Board

◀ from page 1

The Committee advised and updated its charter “to bring it in line with the current operational and oversight needs of the community,” according to the motion’s rationale.

Bridge Maintenance

The board also passed a motion directing the LWCC, acting as Trustee, to assume maintenance responsibility of the pedestrian bridge adjacent to Montgomery Mutual and Mutual 8.

The bridge is currently closed and will reopen when maintenance repairs have been made to it. It was constructed some time in the 1960s or 1970s and a record establishing responsibility for it by a specific legal entity could not be found, according to

the motion’s rationale.

Site Plan Update

A request for proposal was submitted at the end of June to solicit proposals from architectural firms for the permitting phase of the Administration Building and Clubhouse I Site Improvements project, said Tom Snyder, assistant general manager of facilities and services.

Management is considering how to best utilize the planned Administration Building’s space to accommodate residents’ needs and generate streams of revenue, Flannery said.

MedStar Report

The board received a quarterly report from MedStar Health medical center that summarizes and provides updates on the medical services the center provides.

Health Advisory Committee chairperson Sandy McLeskey expressed the committee’s concern about the level of psychotherapy treatment provided to MedStar patients. The Committee has recommended that the medical center hire another psychotherapist.

Other Updates

- The Audit Advisory Committee has drafted a request for proposal for audit services, as Leisure World’s current contract has expired, said Committee member Phil Marks.
- General manager Kevin Flannery said he expects the planning process for the 2020 budget will extend into September this year, allowing “proper time to review this challenging budget.”
- Special Personnel Committee

chairperson Patricia Hempstead distributed a paper survey evaluating the general manager’s performance for board members to complete and submit.

The board voted to enter into a closed session at the end of the regular meeting to discuss legal matters.

The board meeting’s agenda packet and minutes are available online at (residents.lwmc.com). After signing into the website, click on “Resident Document Locator” under the “Documents” dropdown arrow. In the Resource Center, click on the “Board of Directors” folder.

The next regular meeting of the LWCC board of directors is scheduled for Tuesday, July 30, at 9:30 a.m. in Clubhouse I. LWCC board meetings are open to all residents unless legally closed.

Protecting the Community from Mosquitoes

by Leisure World News

Mosquitoes can be a nuisance in the summertime, but homeowners can also take a proactive approach in helping prevent their spread.

The Maryland Department of Agriculture recommends Marylanders adopt the following practices to help rid their communities of mosquito breeding spots:

- Some mosquitoes breed in as little as a quarter of an inch of water. Eliminate standing water in and around your home. Throw

out or frequently empty and scrub out items that hold water such as tires, buckets, planters, toys, pools, birdbaths and lawn care equipment.

- Clean out roof gutters and downspouts. Ensure tarps and swimming pool covers are positioned so water drains off.
- Don’t leave garbage can lids lying upside down. Be sure water does not collect in the bottom of garbage cans. Dispose of all empty beverage containers, plastic wrappers, etc.
- Pump out bilges in boats. Turn canoes and small

boats upside down for storage.

- If ditches do not flow and contain stagnant water for one week or longer, they can produce large numbers of mosquitoes. Report such conditions to the Maryland Department of Agriculture’s Mosquito Control at (410-841-5870). Do not attempt to clear these ditches because they may be protected by wetland regulations.

Mosquito-Borne Disease

West Nile virus is the leading cause of mosquito-borne disease in the U.S., and people age 50 and older have the highest

risk of developing the virus’ more severe symptoms, according to the Centers for Disease Control.

To protect against mosquito bites, the Maryland Department of Health recommends people cover up with long sleeves and pants, limit outdoor activities during peak mosquito times and use an EPA-approved insect repellent containing DEET, Picaridin or oil of lemon eucalyptus.

Pets and Animals

Pets and other animals can become infected with the mosquito-borne West Nile virus if bitten by mosquitoes carrying the disease.

Infected animals may have a fever, weakness, incoordination, muscle spasms and signs of a neurological disease, such as change in temperament or seizures. If you suspect that your pet has been infected with West Nile virus, contact your veterinarian.

If you find a wild bird or animal that seems infected, use caution. Sick or injured wild animals may bite and scratch, and may pose a risk to humans, according to the Maryland Department of Natural Resources. Contact Wildlife Services toll-free at (1-877-463-6497) before attempting to handle an animal.

WILLSON’S

Leisure World Renovations

Providing renovation services exclusively for residents of Leisure World!

Our Showroom at Physical Properties is Now Open!

Come see our impressive selections of:
**Kitchen Cabinets • Stone Tops
Vanities • Flooring • Windows**

Full Time Staff On Site
Visit us today!

Call our showroom
301-598-1348

or call me directly
Brian Willson
President
301-252-2199
brian.willson@yahoo.com

Recycling Guidelines for Leisure World Residents

from the Sanitation Department

Leisure World has made responsible recycling a priority, but some of the Sanitation Department's collection practices differ from Montgomery County's. Understanding and following these guidelines can help hold down resident fees.

Leisure World does not take paper products to Montgomery County for recycling. Instead, as a cost saving measure, newsprint, cardboard and other paper items are collected separately from other recyclables and sold to an alternate recycling facility. As a result, the community saves the expense of paying to dispose of newsprint and cardboard and receives approximately \$40,000 per year from the recycler.

Place these items in your blue recycling bin; they are picked up on the same day as your trash schedule:

1. Aluminum, bi-metal (steel/tin) cans and aluminum foil products

Acceptable metals include: empty "non-hazardous" aerosol cans; all metal food, beverage, and pet food cans; aluminum foil products such as foil wrap, pie plates and other food trays; and tins from cookies, fruitcakes, popcorn and similar items. Items should be wiped off and cleaned as much as possible.

2. Glass bottles and jars (clear, blue, brown, green)

Rinse, remove caps and lids, and place bottles, jars, caps and lids separately into a blue recycling bin. No ceramic materials, mirrors or window glass.

3. Plastics

Acceptable types of plastic (marked 1, 2, 3, 4, 5 or 7) include: bottles, containers, lids, jars, pails, buckets (with metal and plastic handles), food grade tubs; narrow-neck bottles that contained food, drink and household products (milk, juice, soda, water, salad dressing, cooking oil, shampoo, conditioner, and cleaning and detergent bottles); butter or margarine tubs; yogurt,

cottage cheese and sour cream containers; mayonnaise and peanut butter jars; whipped topping containers, prescription bottles, deli containers and trays, tubs with lids, platter trays, ice cream buckets, plastic beverage cups, laundry detergent tubs and buckets, kitty litter containers, painting buckets (up to five gallons), plastic lids and plastic flower pots.

Unacceptable types of plastics include: containers that held automotive or garden products (motor oil, antifreeze, and pesticide containers), plastic bags, plastic wrap, Styrofoam/polystyrene cups, trays and packaging, clamshell packaging (marked #6), microwavable trays, toys, kiddie pools, plastic flower tray packs (marked #6), other large plastic items.

Other Collections:

4. Newspapers, junk mail, inserts, cardboard and magazines (pickup every Wednesday)

If possible, place bundles

in paper bags or tie them with string before placing in the blue bins.

Do not package newspaper in plastic bags, which are non-recyclable in Montgomery County.

5. Yard trimmings (grass, leaves, brush and Christmas trees)

Call the Grounds Maintenance Department at (301-598-1314) to arrange for pickup. Do not use plastic bags.

6. Fluorescent light tubes and bulbs

Fluorescent bulbs contain a thin mercury layer, rendering them household hazardous waste when they burn out and require disposal.

While fluorescent bulbs may be disposed of in the normal household trash, it is better to bring them to the Physical Properties Department for recycling.

With residents' continued assistance, Leisure World can maintain its ranking as one of Maryland's recycling leaders.

Owning Bonds Can Put Your Retirement on Hold



Join Scott Shulman,
Managing Director – Investments
as he answers....

- What is the outlook for the economy and stock market?
- How to build a steady income stream
- How safe are bonds?



Oppenheimer & Co. Inc. Transacts Business on All Principal Exchanges and Member SIPC. 2573999.1

Lunch Seminar:
Wednesday, July 31, 2019
12:30 PM

Leisure World
The Potomac Room
3701 Rossmoor Boulevard
Silver Spring, MD 20906

RSVP to Cole Samuels at (202) 261-0718
or email at cole.samuels@opco.com

Leisure World of Maryland Resales

April through June, 2019

MONTH	RESALES	RESALES FUND FEES COLLECTED
April	36	\$163,127.98
May	34	\$155,739.98
June	37	\$160,014.80
TOTAL	107	\$478,882.76

The buyer of a home in Leisure World of Maryland contributes two percent of the home’s selling price to the Resales Fund. Currently, those funds are used exclusively for Facilities Enhancement Plan (FEP) projects, which are selected by the Leisure World Community Corporation board of directors.

Recent FEP projects include the Fitness Center in Clubhouse II and renovations to the restaurant and Maryland Room in Clubhouse I.

– Leisure World News

July 18: MVA Mobile Office Returns

by Leisure World News

Need to do business with Maryland’s Motor Vehicle Administration? The MVA on Wheels returns to Leisure World on Thursday, July 18.

The van will be located in the Clubhouse II parking lot, where the hours of operation are 10 a.m.-2 p.m.

Services offered include renewal of non-commercial driver’s licenses, Maryland photo identification cards and vehicle registration. You also can obtain a duplicate driver’s license, a certified copy of a driving record, disability placards, substitute stickers, return tags and duplicate registrations, as well as apply for a change of address.

If you need to register to vote and/or want to register as an organ donor, you can do that at the mobile office, too.

Library Closing Temporarily this Month

The library in Clubhouse I is closing for two weeks beginning Monday, July 8, through Friday, July 19, to implement a new automation system, LibraryWorld.

LibraryWorld is an ADA-compliant web-based system for cataloguing and circulating publications. The library will also install new computer equipment.

The library may reopen earlier than late July if installation is completed sooner than expected. Check channel 972, (residents.lwmc.com) or the library’s door in Clubhouse I for updates.



– Leisure World News

Dial 301-598-1313 for recorded Daily Events

2019 Broadcast Schedule - Channel 974

Executive Committee meetings are broadcast on Wednesday, Thursday and Friday the week after the meeting. Board of Directors meetings are broadcast on Monday, Wednesday and Friday the week after the meeting. All broadcasts are at 4 p.m. and 7 p.m.

Executive Committee Meeting The July 19 meeting airs on July 24, 25 and 26.	Board of Directors Meeting The July 30 meeting airs on Aug. 5, 7 and 9.
---	---

Group Email Addresses

Residents wishing to contact Leisure World Management or a specific department, the LWCC Board of Directors, or the Executive Committee may send an email to the appropriate email address listed below. It will automatically be forwarded to all members of that group who have an email address on record.

Messages to any of the email groups should pertain only to the management and operation of Leisure World trust properties, services, or activities. Please do not send emails to multiple addresses, as there will be a duplication of recipients and will not result in a faster response to your question or comment. Messages pertaining to mutuals or anything else which Management, the Board of Directors, or Executive Committee does not control should also not be sent to these groups.

- The group email addresses are:
- LWMC Management - management@lwmc.com
 - LWCC Board of Directors - board@lwmc.com
 - LWCC Executive Committee - excomm@lwmc.com
 - Administration - administration@lwmc.com
 - Communications - communications@lwmc.com
 - Education and Recreation - recreation@lwmc.com
 - Physical Properties - physicalproperties@lwmc.com
 - Security - security@lwmc.com

GOOD TO KNOW: SHUTTLE BUS ROUTES IN CLUBHOUSE I



Photo by Leisure World News

Need to ride a Leisure World shuttle bus; but not sure which one to take?

Drop by the E&R office in Clubhouse I to see maps of each of the six shuttle bus routes that pick up and drop off residents in and around Leisure World. An enlarged map of Leisure World is also

available for viewing.

The complimentary shuttle service’s daily schedule is available to view, download or print on (residents.lwmc.com). Click on the dropdown arrow next to “Amenities & Services,” and then click on “Security and Transport.”

– Leisure World News

Plaintiffs Reallege Lawsuit's Original Complaint

by Leisure World News

Three Leisure World residents filed a third amended complaint against Leisure World Community Corporation (LWCC) and Leisure World Management Corporation (LWMC) in Montgomery County Circuit Court on June 20.

The amended complaint, filed by Richard Thornell, Jordan Harding and Priscilla Read Chenoweth, realleges the allegations from the first and second complaints – namely that the LWCC's bylaws regarding the election process for the board of directors are unlawful – and demands a jury trial to hear these allegations, despite a judge previously dismissing that claim April 22.

The complaint also retains the second amended complaint's allegations that Leisure World is in violation of the Maryland Consumer Protection Act and that the community's two percent resale fee, resale administrative fee and the monthly assessment that the mutuals pays LWCC do not comply with the Maryland Homeowners Association Act.

LWCC and LWMC have until Monday, July 8, to respond to

the complaint. Leisure World expended a \$25,000 insurance deductible in 2018 defending the community against the lawsuit.

The original lawsuit was filed nearly a year ago by nine Leisure World residents, six of whom have dropped out of the case.

The first complaint and its second and third amended versions are available to view or download from (residents.lwmc.com). Click on "Resident Document Locator" under the "Documents" dropdown arrow, and then click on the "Leisure World Community Corporation Governance" folder. The complaints are located in the "2018 Lawsuit" folder.

NOW AT WEICHERT
LEISURE WORLD PLAZA
MAYNARD E. TUROW
Agent 20 years... Listings, Resales

**THINKING OF SELLING??
Or Friends – Relatives Buying??**

A Real Estate specialist for 20 years working exclusively the senior market. I can answer your questions & find you your dream home. If selling, I'll get you the best price!



Weichert Realtors (C) 301-518-3834
(O) 301-681-0550

Free brochures, Comps, Layouts, Info
Direct: 301-518-3834
maynardturow@yahoo.com

GOOD TO KNOW: FLYING FLAGS AT HALF STAFF



Photo by Leisure World News

Have you ever wondered why the flags in Leisure World are flying at half-staff?

The U.S. and Maryland state flags in front of Veterans Park are lowered in accordance with orders given by the White House and Gov. Larry Hogan respectively.

Either or both flags are often lowered on national holidays of remembrance, such as Memorial Day and Patriot Day, and in honor of deceased military veterans, politicians and other government officials, or when the nation is otherwise

in mourning.

When the flags are at half-staff, residents can tune into channel 972 for details.

Leisure World staff members receive an email notification from the office of the Maryland Secretary of State when flags are to be flown at half-staff, and for how long.

For more information or to subscribe to these notifications, visit (<https://sos.maryland.gov/Pages/Services/Flag-Status.aspx>).

– Leisure World News

Rediscover Our Assisted Living

For almost two decades, Marian Assisted Living has provided focused, personalized senior care. And our award-winning community continues with this mission. Nestled in the heart of the vibrant Brookeville neighborhood of the Reserves at Manor Oaks, we're here for today's needs and tomorrow's. **Learn more, call or visit us today.**

New Neighbors. Same Neighborhood.

Exclusive
Leisure World
Special!

Marian Assisted Living
Minutes from Leisure World
19109 Georgia Avenue
Olney/Brookeville
301-570-3190



Victory Housing
Is A Non-Profit
Organization
Serving Seniors
for More Than
30 Years



VictoryHousing.org

Foot & Ankle Specialists of the Mid-Atlantic

Now the preferred podiatry practice
at MedStar Health at Leisure World



End your toes woes!

Walk pain-free!

Visit Dr. K at MedStar Health
at Leisure World,
3305 N. Leisure World Blvd.,
for treatment of your toes,
heels, ankles and feet.

Dr. Freedman & Dr. Kathrotiya-Mago

Leisure World Plaza Professional Building

3801 International Dr. • Suite 204 • Silver Spring, MD 20906

www.footandankle-usa.com

Call today: (301) 598-0130

THOUGHTS & OPINIONS: *From Our Residents*

A Few Things to Remember

Relevance: Make sure that your submission is relevant to the LW community as a whole and not to just one person, mutual, or organization.

Respect: Remember that your opinion is about ideas, not individuals, and please avoid personal attacks.

Brevity: Being concise will ensure that your opinion will have maximum impact.

Accuracy: Document all factual assertions. Opinions that are backed up with facts are more powerful, but only if the facts are accurate.

Ownership: All submissions are subject to editing but you will have the opportunity to approve the edits before publication.

Opinions are strictly those of the writers. Thoughts and Opinions is maintained by the Communications Advisory Committee.

FREE WI-FI IN CLUBHOUSES

Free Wi-Fi is available in Clubhouse I and II for residents and visitors who would like to use their laptop computers, tablets and smartphones. To connect to Wi-Fi, just open the device's Wi-Fi settings, select "LW-Guest" and enjoy. The network connection is unsecure, so use caution.

COEXISTING WITH WILDLIFE

I am responding to concerns regarding the Leisure World deer "problem." While some people do consider these beautiful animals a problem, many others (myself included) find them a delight. The Leisure World community is a home not only for human residents, but also for a variety of wildlife. I know I am not alone in feeling lucky to be able to share this space with them.

But for those who are less than happy about being in proximity to the deer, it is fortunate that there are readily available resources on how to protect one's property, and otherwise humanely coexist. Regarding health concerns, as a healthcare professional, I know that we are much more likely to contract serious illnesses from other humans than from deer and other wildlife. To those who do not enjoy our wild neighbors, please try to tolerate them. They have a right to life, just as we do!

— Shirley Feldman

SUBMITTING AN ITEM TO THOUGHTS & OPINIONS

1. Submissions must be emailed to aclwn@lwmc.com or delivered to the LW News Office.
2. Receipt of submissions will be confirmed by email or telephone.
3. Submissions must state the writer's name, address, telephone number, and email address, if any, but if the material is published, it will include only the writer's name.
4. LW News cannot guarantee when or if a submission will be published.
5. To view the full Leisure World News Guidelines, login to (residents. lwmc.com) and click on Documents, then select the Advisory and Special Committees folder, and click the Communications folder.



Sell your life insurance policy for cash!

If you are age 70 or older with a life insurance policy you no longer need, consider getting a life settlement! You might be able to sell your policy for a large lump sum cash payout.



(877) 959-3547 • info@esteemamerica.com

PARTNERING FOR SUCCESS

Enjoy the benefits of our combined strengths
to lead you through a smooth and winning transaction!

Specializing in
Retirement Living

Ask us about our
Metro Expertise too!



Over 14 Million
Settled in
Listings and Sales
in 2018!

All properties
advertised are our
own transactions!

SUDHA BAXTER

RE Licensed
MD & DC
202-368-8536

SUE HEYMAN

Former Mont. Co. Teacher
Seniors Specialist
MD RE Licensed
301-580-5556

RICK WINKLER

CPA
RE Licensed
MD & DC
301-404-3105

Weichert Award Winning Top Producers • Community Resident and Community Investors
Expanded Coverage for Buyers and Sellers in DC and MD • Awarded for Excellent Client Service
Sue is #1 Lister in the Regency Mutual 25 • Top 1% of Agents Nationwide



COMING SOON!

Turnberry "C" Model
2 BR, 2 FB Fresh paint,
new flooring, high ceilings,
gas heat, open kitchen.



COMING SOON!

Villa Cortese New Building "Q"
Barely lived in, luxury 2 BR, den,
2 FB, green view, garage space
included, upper \$400's.



NEW LISTING! \$115,000

Hampton
Renovated 2 BR, 1 FB
co-op garden apt. 1200 sf.



NEW LISTING! \$150,000

Hampton Deluxe
Renovated 2 BR, 2 FB,
condo garden apt. 1200 sf.



NEW LISTING! \$499,999

Villa Cortese New Building "T"
3 BR, 2 FB, upgraded appliances
& floors, Garage space, 1560 sf.



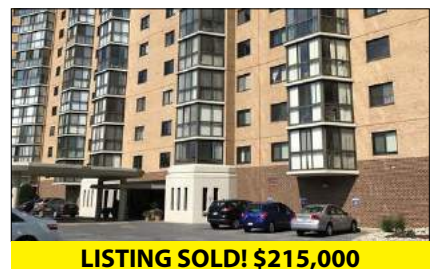
LISTING UNDER CONTRACT!

Elegant, Updated Patio Home
Turnkey, 2 BR, 2 FB, family room
w/FP, 2 patios, 2 car garage.



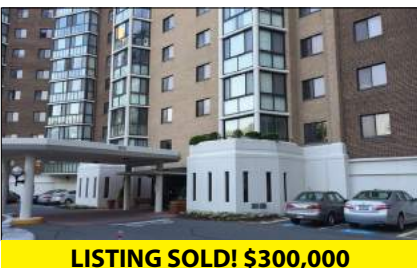
LISTING SOLD! \$164,500

Berkley Townhouse
2 BR, 1 FB, 2 HB, Laminate HWD,
new carpet & fresh paint.



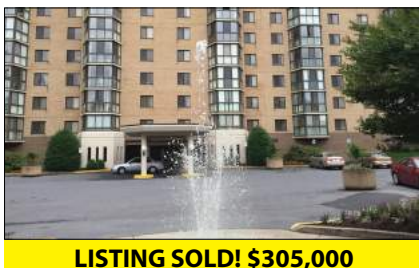
LISTING SOLD! \$215,000

Fairways South "GG" Model
Garage spc, 2 BR, 2 FB, lower flr,
contemporary updates, 1195 sf.



LISTING SOLD! \$300,000

Greens "K" Remodeled + Gar
2 BR, Den, 2 FB, stunning kit. &
BAs, exceptional views, 1480 sf.



LISTING SOLD! \$305,000

Fairways "P" Model
3 BR, 2.5 BA, enclosed balcony,
TLC touches needed, 1,530 sf.



LISTING SOLD! \$350,000

"Cabot" Model Patio Home
3 BR, 2 FB, kit & BA updates, turn-
key, fenced patio, 2 car garage.



LISTING SOLD! \$719,000

The Regency "Falconcrest"
4 BR, 3.5 BA, new carpet & paint,
granite & SS appliances, 3322 sf.

CALL US FOR FREE:
CONSULTATION, COMPETITIVE MARKET ANALYSIS,
& COMMUNITY BOOKLETS

Sue Heyman: 301-580-5556 sueheyman@aol.com
Rick Winkler: 301-404-3105 rwinkler@weichert.com
Sudha Baxter: 202-368-8536 sudhabaxter@yahoo.com
Weichert Realtors: 301-681-0550 office

EVENTS & Entertainment

■ Sock Hop Group

July 6 and 20: Dance Your Cares Away

by Abigail Murton

The next sock hop dance is on Saturday, July 6, at 7 p.m. in the Clubhouse I Crystal Ballroom. Join in the fun an hour earlier with karaoke at 6 p.m.

The price of admission is \$10 and the band Groove Quest plays from 7-10 p.m. Soft drinks and water are provided, but dancers should bring their own snacks. A cash

bar is included.

And then on Saturday, July 20, dance the night away as Take Two Entertainment delivers the oldies but goodies from 7-10 p.m. in Clubhouse II. Admission is \$5. Soft drinks are provided but dancers can bring their own beverages and snacks.

Come relive the fun of high school dances. For questions, contact Doug Brasse at (301-448-8708).



■ Education and Recreation Department

July 17: Enjoy Classic Tunes with the Olney Concert Band



The Olney Concert Band, courtesy photo

The Olney Concert Band (OCB) is excited to be back at Leisure World for another summer concert. Their always lively and entertaining performance is scheduled for Wednesday, July 17, at 7:30 p.m. in the Clubhouse II auditorium.

You'll hear iconic rock from Eric Clapton, favorite Ray Charles and Frank Sinatra tunes, a musical medley from "The King and I", Americana and more. There is something for everyone!

Tickets are \$6 per person and are on sale in both clubhouse E&R offices. Please bring your Leisure World ID.

OCB offers a challenging outlet for local musicians of all ages (from high school to long-retired adults) from throughout the

region who enjoy making music together and performing for the community. The band has been performing more than 30 years.

OCB provides entertainment and exposure to the arts, and forms an integral part of the program at community festivals, celebrations and charity events. It prides itself in performing a wide range of musical styles so that audience members of all ages and backgrounds can experience a personal connection to the performance.

This concert, along with a December holiday concert, has become a nearly annual event that the band members really enjoy performing. So be sure to get tickets for yourself, family and friends for a truly enjoyable evening of music.

■ Education and Recreation Department

July 13: Guitarist Explores the Rhythms of Northeast Brazil

Guitarist Richard Miller is really excited to return to Leisure World; he enjoys the enthusiasm of the audience. So, on Saturday, July 13, at 7 p.m., he will perform in the Clubhouse II auditorium.

During previous concerts, he has introduced the audience to the Brazilian choro, a subject on which he is an expert, and the bossa nova. For this concert, he will explore other rhythms from northeast Brazil, along with more bossa nova. And you may expect a surprise as well.

Tickets for the event are \$8 per person and are on sale in both clubhouse E&R offices.

Please bring your Leisure World ID.

About the Performer

In addition to appearing as a soloist, Miller often combines talents with other musicians, including other guitarists and vocalists that also specialize in Brazilian music. He has toured South and Central America as well as the U.S. in both classical recitals and with Latin jazz bands.

He performs often in recital at the Brazilian American Institute and has appeared at

the Kennedy Center, Library of Congress and on many performing arts series, as well as at the White House for President Barack Obama.

Miller earned a doctorate in music theory from the Catholic University of America and a master's in guitar performance from the Manhattan School of Music. He is an adjunct assistant professor at Columbia

University where he teaches composition and music theory.

His dissertation, "The Guitar in the Brazilian Choro," was published by Lambert Academic Publishing in 2014.

After many years of being urged to do so, Miller released his first CD, "It's Time," in 2017. It will be available for purchase at the end of the concert, by check, payable to Richard Miller, or cash.

He also continues as the director of education programs for the Afro-Latin Jazz Alliance based in New York City.

A long-time practitioner of yoga and surfing, Miller created the Balanced Guitar retreat to enable guitar students to learn a holistic lifestyle that will ensure many years of healthy and creative guitar playing.



CHECK THE DIRECTORIES



Looking for a club or committee meeting? Check the electronic directories in the clubhouse lobbies to find the time and location of that day's meetings.

The directories also offer alerts and headline news.

July 19: Join Charity Golf Tournament and Take a Swing for Pediatric Cancer

by Maxine Hooker

It's almost tee-off time for the Lions Club's 4th annual charity golf tournament on Friday, July 19, and participants only have a few more weeks of practice.

The tournament entry fee is \$95 per person (includes luncheon). Registration forms are available in the Lions Club's mailbox in the



Clubhouse I E&R office and at the Pro Shop.

The deadline to register is Wednesday, July 10. Onsite registration may be possible, but only if space is available.

Those who do not golf may still attend the awards luncheon after the tournament; tickets are \$25 (luncheon only).

Luncheon registration forms are available in the

Lions Club's mailbox, or contact Maxine Hooker at (waxie maxie@juno.com) or (301-598-0242) if you wish to attend.

Funds from participation in the tournament go to Lions Clubs International for distribution toward helping



Golfer Veronica Etheredge takes her swing. Photo by Al Holston

pediatric cancer patients. Come swing this year with the Lions and enjoy a day of golf and fun knowing you will be helping children in need.

Those who are interested in being a business sponsor or making an in-kind donation also may contact Maxine.

■ **Arts In Motion (AIM)**

July 20: 'Authors In Mind' Series Returns

by Grace C. Cooper

AIM's "Authors in Mind" lecture series returns on Saturday, July 20, at 1 p.m. in Clubhouse I. Authors Karen Cantwell, Libby Klein and Maureen Klovers will discuss their work and creative inspirations.

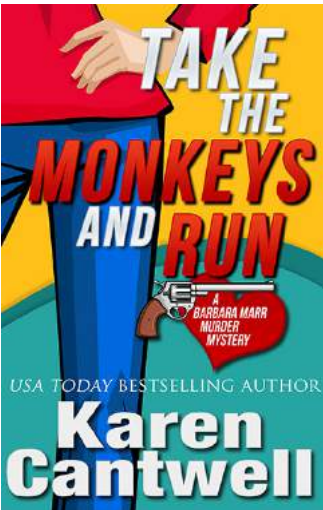
The event is free but tickets are required and available at the Clubhouse I E&R office. Copies of the authors' work will be available for sale. Cash payment is preferred.

About the Authors

Karen Cantwell is a comedienne at heart. She loves to make people laugh with her USA Today bestselling Barbara Marr Murder Mystery series, Sophie Rhodes Ghostly Romance

series and many short stories. For more about her work, visit (www. KarenCantwell.com).

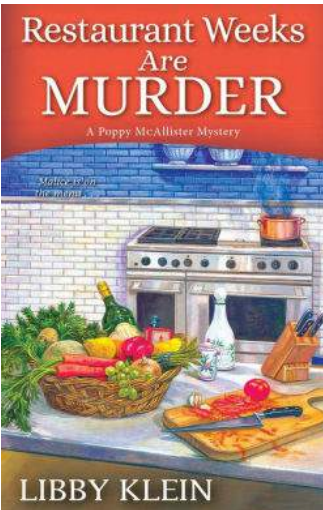
Libby Klein, author of the Poppy McAllister mystery series, loves to drink coffee, bake gluten-free goodies and befriend random fluffy cats. She writes from her Northern Virginia office while trying to keep her cat,



Figaro, off her keyboard.

Maureen Klovers is the creator of the Rita Calabrese

Italian-American culinary cozy series set in New York's Hudson Valley. A former spy and middle school teacher, she has a keen



sense of adventure: she's hiked through the jungle to Machu Picchu, toured a notorious



Bolivian prison with a German narco-trafficker and fished for piranhas in Venezuela.



2019 Movie Schedule

Sponsored by the E&R Department

Movies are FREE and shown for your enjoyment in the Clubhouse II auditorium, though you will need a ticket. Please pick up your tickets (limit two per person) on the date indicated below at either Clubhouse I or II. Please bring your Leisure World ID; and remember tickets can go fast.

Show Date & Time	Movie	Tickets Available
July 18, 1 p.m.	Little Italy	LIMITED
July 28, 2 p.m.	On Chesil Beach	July 9
Aug. 4, 2 p.m.	The Bookshop	July 23
Aug. 22, 1 p.m.	First Man	Aug. 6
Sept. 19, 1 p.m.	Indivisible	Aug. 20

Movies are subject to change.



JOHN J. FERGUSON, ESQ.
FERGUSON & WILPON

ESTATE ADMINISTRATION/PROBATE

WILLS POWERS OF ATTORNEY LIVING TRUSTS

REAL ESTATE MEDICAL DIRECTIVES/LIVING WILLS

CALL JOHN FERGUSON
301-570-3633

3406 Olandwood Court, Ste. 202, Olney, MD 20832
WE CAN MEET IN YOUR HOME OR OUR OLNEY OFFICE

July 25: Soprano Performs the Classics in Honor of Her Late Father

On Thursday, July 25, at 2 p.m. in the Clubhouse II auditorium, soprano Erica Marie Ferguson performs a special concert, “Songs for My Father,” in remembrance of her father, Paul Andrew Ferguson.

Featured pieces will include operatic classics by Puccini, heartfelt works by Samuel Barber and festive songs to celebrate her father’s life.

Joining Ferguson on stage will be Zach Taylor, the first recipient of the Paul Andrew Ferguson Memorial Scholarship at Towson University.

The scholarship was established to commemorate his life and love of classical music and is awarded annually to

a deserving voice student at Towson University, selected by the faculty.

The performance is free, but tickets, maximum two per person, are required and can be obtained in both clubhouse E&R offices. Please bring your Leisure World ID.

About the Performer

Ferguson is currently a member of the Maryland Opera Studio at the University of Maryland where she is pursuing her master’s of music degree.

Her operatic performances include the title role in “Princess Ida,” Countess Almaviva in “Le Nozze di Figaro,” the title role in the world premier of “Hajar,”

Laetitia in “The Old Maid and the Thief” and Nurse Lola in “Gallantry; A Soap Opera.”

Ferguson has performed with Annapolis Opera for three seasons in their children’s opera outreach productions and recently in their Arias & Encores Concert.

She has studied at the Washington National Opera Institute, the Levine School of Music, the Baltimore Lyric Opera and graduated from Towson University with a bachelor’s of music degree.

Donations towards the Paul Andrew Ferguson Memorial Scholarship at Towson University will be graciously accepted at the performance or may be

made online at (towsonuniversity.givingfuel.com/departments-of-music).



Erica Marie Ferguson, courtesy photo

GALAXY PAINTING

COMMERCIAL & RESIDENTIAL PAINTING & RENOVATION
Since 1976

CUSTOM PAINTING
PLASTERING
CARPENTRY
INSURANCE
WATER DAMAGE
MASONRY/
CERAMIC
INDUSTRIAL
RENOVATION
CONDOMINIUMS

- **COMMERCIAL & RESIDENTIAL**
- **EVENINGS & WEEKENDS**
- **GREEN & LOW VOC PAINT PRODUCTS**

FREE
REMOVAL/DISPOSAL
OF YOUR OLD PAINT
CANS THROUGH
PROPER HAZMAT
PROCEDURE

FREE
ESTIMATES
BONDED
INSURED
LICENSED
Members:

DC. LIC. # 39601168
MHIC LIC. # 31079
VA. LIC. # 2705034376

301-530-2600
www.galaxypainting.com

DENTAL CENTER ASPEN HILL

Keep Your Teeth For a Lifetime!

Your friendly neighborhood dentists
are right down the street!

MEET OUR DENTISTS
Dr. Cyrus Allafi and Dr. Sara Saba D.D.S.

- Comprehensive and personalized evaluations
- Emergency care offered
- Same day pain relief
- Comfortable tooth removal
- Most insurance plans accepted
- Financing plans available
- Our caring staff are always happy to help

NEW PATIENT SPECIAL OFFER
\$99
(a \$310 value)
Includes Comprehensive Examination,
Necessary X-rays, and Routine Cleaning*
*In absence of periodontal disease

CALL TODAY AND SCHEDULE AN APPOINTMENT!

301-871-6660
www.aspenhilldds.com

13975 Connecticut Ave.
Silver Spring, MD 20906
Suite 302, Third Floor

July 27: 'Come Together' for 'Beatlemania Again'

by Leisure World News

Those who believe in 'yesterday' might do well to attend "Beatlemania Again," a Beatles tribute jointly sponsored by the E&R Department and the Foundation of Leisure World. The performance occurs twice on Saturday, July 27, at 4:30 and 7 p.m. in the Clubhouse II auditorium.

"Beatlemania Again," which has been performed across the U.S. and Canada for 20 years, portrays the Beatles' career from beginning to end. Four musicians emulate the great quartet in costume and

sound, using the same instrumentation as the Beatles themselves.

Tickets cost \$15 and are available in both clubhouse E&R offices, "but you better hurry 'cause it may not last!" Please bring your Leisure World ID.



About the Fab Four

John Lennon is portrayed by Marty McGowan.

McGowan has performed as Lennon for more than 20 years, including at several big-name venues.

Paul McCartney is portrayed at Broadway caliber by Alan LeBeouf, who for two years had

the role of McCartney in the musical "Beatlemania."

George Harrison is portrayed by Tyler Lindemuth. Aside from Beatles tributes, he has written original music and played in a classical guitar ensemble.

Ringo Starr is portrayed by Rich Morello, also the band's manager. He's known for rendering Starr's drum parts with great energy and has drummed nationally and internationally for more than 25 years.

About the Foundation

The Foundation of Leisure World is a 501(c)(3) organization that was established for health, educational and cultural purposes. Contributions to the



Beatlemania Again. Graphic courtesy Galaxy Entertainment

Foundation may be claimed as deductions on income tax returns to the extent permitted by law.

If your club or organization has a need, email the Foundation at (foundation@lwmc.com).



THE Lisa
Vogel
Agency
IN-HOME CARE

LISAVOGELAGENCY.COM
301-664-7945

We bill and collect from all long term care insurances.

License No.R2635 Licensed as a residential service agency by the Maryland Department of Health and Mental Hygiene, Office of Health Care Quality.

FREDRICK A. ISAACS, M.D., P.C., FACS BOARD CERTIFIED OPHTHALMOLOGIST

Latest Advances in Cataract Surgery including the Restor® & LenSx (Femtosecond)
Treatment of Glaucoma & Macular Degeneration
(Avastin, Lucentis & Eylea Injections)
Complete Exams and Contact Lens Exams

Full Service Optical Shop Glasses, Sunglasses, Contact Lenses

We offer the latest diagnostic equipment for assessment of retinal disease and glaucoma.

ON PREMISES: Visual Fields, Cirrus HD - OCT, Fluorescein Angiography, Stereo Disc Photographs, Corneal Pachymetry and Topography.



3801 International Drive, Suite 208
Silver Spring, MD 20906
301-598-8500

LEISURE WORLD PLAZA PROFESSIONAL BUILDING

EMERGENCY APPOINTMENTS AVAILABLE

Aug. 3: Vocalists Perform Tribute to Doris Day

Singer and actress Doris Day (1922-2019) is an icon of music and the Silver Screen.

In her mid-teens, she began singing for noted band-leaders like Bing Crosby and Les Brown. And it was while working for Brown in 1945 that she recorded “Sentimental Journey” – which became her first smash hit.

Her singing eventually led her into acting and during the 1950’s and 60’s, Day was one of Hollywood’s biggest stars. Later in her career, she also starred in several TV series.

As her singing and acting career drew to a close, she launched herself anew as animal activist, advocating against the misuse and abuse of animals.

Day’s songs endure and have become woven into the tapestry of the American Songbook.

On Saturday, Aug. 3, at 7 p.m. in the Clubhouse II

auditorium, pianist and vocalist Frank Plumer and vocalist Rachel Panay pay tribute to Day’s music, performing some of her most recognizable songs such as “Sentimental Journey,” “Que Sera, Sera,” “It’s Magic,” “Secret Love” and many more. They will share stories from her career and insight into the music as well.

Tickets for this special tribute are \$10 per person and go on sale beginning Tuesday, July 9, at 8:30 a.m. in both clubhouse E&R offices. Please bring your Leisure World ID.

About the Performers

Plumer is well-known to Leisure World audiences. A musician from the age of four, he performs regularly at the Metropolitan Club and has been entertaining area audiences for more than 30 years.

Plumer has also enter-



From left, pianist and vocalist Frank Plumer and vocalist Rachel Panay, courtesy photos

tained many celebrities and Washington luminaries including Hillary Clinton, George W. Bush, Michelle Obama, Ivanka Trump and Stevie Wonder, among others. His repertoire includes classical, jazz, Broadway works, American standards and music from around the world, often including humor with the music.

This performance is vocalist Panay’s first appearance at Leisure World. A graduate of Duke Ellington School for the Arts and the

prestigious Berklee College of Music, Panay is a six-time Billboard Club charting singer-songwriter.

She recently returned to her musical theatre roots appearing as Rose in Theatre Lab’s production of “The Secret Garden.” Panay is also a Wolf Trap resident teaching artist in the Washington, D.C., schools and has been commissioned by Wolf Trap to create and perform her original children’s performance piece, “Jazz Cat/Blues Kitty.”

Coming in 2019

The E&R Department is pleased to provide the following programs.

July 13, 7 p.m.	Guitarist Richard Miller
July 17, 7:30 p.m.	Olney Concert Band
July 25, 2 p.m.	Erica Marie Ferguson – Songs for My Father
July 27, 4:30 p.m.	Beatlemania Again
July 27, 7 p.m.	Beatlemania Again
Aug. 3, 7 p.m.	A Tribute to Doris Day
Aug. 11, 4:30 p.m.	The Fabulous Hubcaps
Aug. 11, 7 p.m.	The Fabulous Hubcaps

Watch Leisure World News for more information on these and other upcoming programs throughout the year.

Musical Performances at the Clubhouse Grille

The following bands will perform from 6-8 p.m. in the Clubhouse Grille restaurant. To make dinner reservations, call (301-598-1330). A \$5 cover charge applies.

July 17	“Sax with Mike” Surratt
July 19	Motown Classics with The Winstons Duo
July 31	Michael Binder, Swing’N On A Star
Aug. 14	Motown Classics with The Winstons Duo
Aug. 21	Michael Binder, Swing’N On A Star

Ask for the LEISURE WORLD PACKAGE
and receive a free gift
301.296.6864

Pre-Paid arrangements available

Just a Simple Graveside Funeral (Winston 20 Gauge casket included) \$3595	Just a Simple Cremation \$1595
---	---

Other Package Plans Available

- Convenient
- Simple
- Dignified
- Affordable

www.valuechoicebrand.com
1091 Rockville Pike | Rockville, MD 20852 | Email: info@valuechoicebrand.com
Operating out of Sagel Bloomfield Danzansky Goldberg Funeral Care, Inc. Rockville, MD

Aug. 11: The Fabulous Hubcaps Roll Into Town



The Fabulous Hubcaps, courtesy photo

Always a favorite, The Fabulous Hubcaps return to Leisure World on Sunday, Aug. 11. Co-sponsored by the E&R Department and the Foundation of Leisure World, the band performs two shows, one at 4:30 p.m. and the other at 7 p.m., in the Clubhouse II auditorium.

Tickets are \$15 per person and go on sale beginning Tuesday, July 9, at 8:30 a.m. in both clubhouse E&R offices. Please bring your Leisure World ID.

About the Hubcaps

Performing since 1974, originally as Harvey Hubcap and the Do Ron Ron, the band continues to create the classic sounds from the early days of 1950s rock 'n' roll through the pop music of the 1970s.

Remember drive-in movies, milkshakes and sock hops? Remember the day trips to Ocean City, traveling down Route 50 listening to the Beach Boys?

If the answer is "yes," then let The Fabulous Hubcaps

take you on a musical journey down memory lane. And on the journey, you may even encounter the likes of Elvis, The Platters, Ray Charles or any one of the many artists members of the band impersonate.

The group was inducted into the Southern Legends Entertainment and Performing Arts Hall of Fame and the Maryland Entertainment Hall of Fame,

which named them the 2015 "Vocal Group of the Year."

This is a fun and fantastic show you will not want to miss!

About the Foundation

The Foundation of Leisure World is a 501(c)3 organization that was established for charitable, health, educational and cultural purposes.

Contributions to the Foundation may be claimed as deductions on income tax returns to the extent permitted by law.

If your club or organization has a need, email the Foundation at (foundation@lwmc.com).



ADVERTISEMENTS SUPPORT THE NEWSPAPER.

When you patronize businesses, tell them you saw their ad in the Leisure World News.

FLOORMAX

YOUR FLOORING PROFESSIONALS SINCE 1985

FREE • In-home consultation
• Pad upgrade
• Standard furniture moving

STAINMASTER

Whole House of Carpet

INSTALLED (Includes **FREE** delivery & pad.)

Up to 750 sq. ft.

Starting at **ONLY**

\$1999*

(*See store for details and selection.)

CLEO HOME

now with



WILL NOT STAIN, WILL NOT FADE, WILL NOT WEAR OUT, EASY CARE AND MAINTENANCE!

10' x 10' Kitchen Floor Approximately

\$999*

Installed

(*See store for details and selection.)



LIFE PROOF
(MESSES, KIDS, PETS & ODORS)



WATER PROOF



LIFETIME WARRANTY

Aspen Hill Center

13629 Connecticut Ave.

(301) 460-4100

WWW.FLOORMAX.US.COM

GUARANTEE

110%*
FLOORMAX

*See store for details

\$250 OFF!

***Any Purchase of \$3000 or More!**

*Limited time only, cannot be combined with any other offer. Must be presented at time of purchase.

Carpet | Hardwood | Ceramic | Laminate | Vinyl

■Hispanos de Leisure World

July 12: ‘Under the Same Moon’

by Loty Goldenberg

Hispanos de Leisure World presents the adventure/drama “Under the Same Moon” (2007, 1 hour 49 minutes, Spanish with English subtitles, adventure/drama, rated PG-13 for some thematic elements) on Friday, July 12, at 3 p.m. in Clubhouse I.

The film tells the story of a Mexican mother who decides to go to the U.S. to work, leaving her nine-year-old son, Carlitos, with his grandmother, and hoping to be able to reunite soon with him. When the grandmother suddenly dies, the young boy decides to take the necessary steps to meet with his mother, and a treacherous trip begins.

Tickets are not required, and all residents and their guests are welcome to attend.



■Education and Recreation Department

Sunday Afternoon at the Movies

July 28: ‘On Chesil Beach’

The E&R Department is pleased to present “Sunday Afternoon at the Movies.” The movies are shown at 2 p.m. in the Clubhouse II auditorium.

On Sunday, July 28, the featured film is “On Chesil Beach” (2018, 1 hour 50 minutes, drama/music/romance, rated R for some sexual content and nudity).

Free tickets, limit two per person, are required and can be obtained from the E&R office in either Clubhouse I or II, beginning Tuesday, July 9, at 8:30 a.m. Please bring your Leisure World ID.

Ian McEwan has adapted his bestselling novel about a young English couple of dramatically different

backgrounds, who marry in the summer of 1962. Following the pair through their idyllic courtship, the film explores sex and the societal pressure that can accompany physical intimacy, leading to an awkward and fateful wedding night.

Sunday movie screenings are for your enjoyment; there is no charge. Be sure to pick up your ticket(s) in advance if you plan to attend. Please note that no one will be seated after 2 p.m.



AUTO BODY

Rockville Central

Just off East Gude Drive

301-424-3500

**FREE ESTIMATES
IF YOU CAN'T COME TO US
WE WILL COME TO YOU**

SPECIAL OFFER

- ❖ Paintless Dent Removal from \$75
- ❖ Free Pick up & Drop Off
- ❖ Free Towing to Shop
- ❖ Free Touch Up Paint
- ❖ Lifetime Warranty on All Repairs
- ❖ Special Discounts for LW Residents

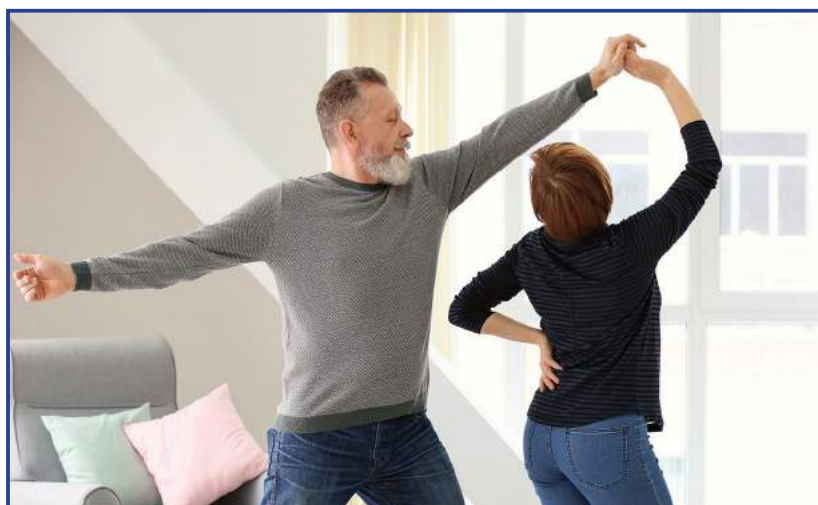
**We Happily Handle All Insurance
Claims for You**

Ask for Richard or Tony

BICYCLISTS' TRAFFIC RULES

Bicyclists are required to ride as near to the right side of the pavement as practical. All vehicular traffic regulations must be adhered to, i.e., stop, yield, pedestrian right-of-way, etc. Designated arm/hand gestures are required when making left and right turns and stops.

PRESIDENTIAL
HEATING & AIR CONDITIONING, INC.



DANCE-WORTHY SAVINGS!



Big Savings

10% OFF UP TO \$250!

off Service or Installation*

- | | | |
|-------------------------------|-------------------------------|----------------------|
| ✓ Award winning | ✓ Master Electrical certified | ✓ EPA certifications |
| ✓ Master Gas Fitter certified | ✓ Factory trained | ✓ NATE certified |

www.presidentialheatandair.com/leisure-world-2019

* See website for details.

CALL TODAY 301-517-9023



THIS SUMMER ... *Start a New Journey*

Whether it's strolling winding paths or socializing in sunny courtyards, residents of Assisted Living at Brooke Grove experience a warm, vibrant lifestyle and delight in our charming setting of open meadows and airy trees.

OUR AMENITIES

- ❁ Private rooms filled with sunshine from over-sized windows and skylights
- ❁ 24-hour on-site clinical support from licensed and caring nurses
- ❁ Secure courtyards and walking paths
- ❁ Ornamental koi pond
- ❁ Manicured flower and sensory gardens
- ❁ Playground for visiting kids

MEMORY SUPPORT PROGRAM

For residents with Alzheimer's or dementia, we offer a special assisted living option with:

- ❁ Specially trained memory support staff
- ❁ An interactive lifestyle that maximizes choice and independence
- ❁ Tailored LIFE® enrichment programming that connects each resident to his or her past
- ❁ Group activities that allow residents to enjoy the outdoors and a thriving social life



BROOKE GROVE
RETIREMENT VILLAGE

18100 Slade School Road
Sandy Spring, MD 20860
301-260-2320 or 301-924-2811

www.bgf.org



HEALTH & Fitness

■ Lions' Vision Support Group

Protecting Your Sight From the Sun

by Larry Cohen

Studies show that long-term exposure to bright sunlight may increase the risk of cataracts and growths on the eye, including cancer.

UV rays reflected off sand and water can cause eyes to sunburn, potentially resulting in temporary blindness in just a few hours. In support of UV Safety Awareness Month this July, the American Academy of Ophthalmology reminds the public of the importance of shielding eyes from the sun's harmful rays with 100 percent UV-blocking sunglasses and broad-brimmed hats.

Support Group

The Lions' Vision Support Group meets on Wednesday, July 17, at 1 p.m. in Clubhouse I, instead of the regular second Wednesday of the month.

Some of the benefits of coming to the Lions' Vision Support Group's meetings include sharing knowledge

and information with each other. The Group teaches its members with low or impaired vision how to adapt to their changing needs while continuing to live an active lifestyle.

Special Guest

Dr. Catherine A. Cukras, director of the Medical Retina Fellowship Program at the National Eye Institute (NEI), gives a talk about "Understanding the Remarkable Retina" at a special meeting on Wednesday, Sept. 11, at 10 a.m. in Clubhouse II. She will be looking for residents that may be eligible for one of the NEI's retinal studies.



General Information

Most regular meetings of the Group take place on the second Wednesday of each month at 1 p.m. in Clubhouse I. For more information about the Group or its programs, contact Larry Cohen at (908-770-9111) or email (topops@aol.com).

■ Health Advisory Committee

July 17: Expert Speaks on Medical Marijuana

by Sandra McLeskey

These days, it seems like there is a lot of publicity about medical marijuana – especially the marijuana extract called CBD (cannabidiol).

Dr. David Shurtleff from the National Center for Complementary and Integrative Health (NCCIH) will speak about medical marijuana on Wednesday, July 17, at 2 p.m. in the Clubhouse II auditorium.

Shurtleff is an expert on alternative medicine and drug abuse and will be able to provide scientific reasoning and data to this confusing field. The Health Advisory Committee is sponsoring this talk so that residents can have access to the latest scientific information.

Shurtleff will speak for about 45 minutes and then entertain questions. The event is free and residents do not need to sign up to attend.

■ Cannabis 101 Club

July 19: Cannabis Health and Wellness Fair

by Carminetta Verner

The Cannabis 101 Club sponsors a Cannabis Health and Wellness Fair for all residents on Friday, July 19, from 1-4 p.m. in the Clubhouse I Crystal Ballroom.

Come and learn about the natural alternative to

prescription drugs that is helping seniors improve their health and vitality.

The Fair will feature informational product vendor tables of various Maryland-produced cannabis products, gentle yoga, meditation demonstration, blood pressure checks, hemp-based bath and body products, talks with recommending physicians and information about the Maryland Medical Cannabis Commission program (MMCC).

The event is free and tickets are not required. The Fair does not include the consumption of cannabis, but will include refreshments.

MMCC Registration

On the same day from 9 a.m.-1 p.m., the Club will register residents with the MMCC on a first-come first-served basis. Space is limited to 25 people.

If interested in this service and

to facilitate registration on July 19, submit your name, phone number and email address to (lwcan101@gmail.com) as soon as possible. After receiving this initial information, residents will be contacted with further instructions.

For additional information, contact Carminetta Verner at (630-699-1629) after 10 a.m.



Photo courtesy Shutterstock

PHYSICIAN HOUSE CALLS
AFFORDABLE AND CONVENIENT

Can't get to the doctor or your doctor can't see you right away? Dr. Kinney will come to you. He covers Leisure World and surrounding areas.

Medicare is accepted for qualified patients; you pay a small trip fee for your house call. Dr. Kinney does family consults, second opinions, medical testing and evaluations.

Most lab tests, X-rays, EKGs, etc. are performed in the comfort of your home.

MDCM
Metro Direct Care Medical

Stephen L. Kinney, MD
Primary and Urgent Care
Board Certified Family Medicine

Medicinal Marijuana recommendation is now available in Maryland.

For more information:
Call: 202-368-6820 | www.metrodcmed.com

Health & Fitness In Brief

Al-Anon Meeting: Al-Anon (for family and friends affected by alcoholism) meets Fridays at 2 p.m. at Our Lady of Grace Church Parish Center, near Leisure World. Enter through the back door (15661 Norbeck Blvd., Silver Spring). For more information, call Bridget at (301-598-3043).

Alcoholics Anonymous (AA): Newcomers welcome. (If outside Leisure World, check in at the main gate.) Meetings are Mondays at noon (Step Meeting) and Thursdays at 6 p.m. (Big Book) in Clubhouse I. For questions, contact Laurie at (240-558-4454).

Alzheimer's Caregivers Support: The Alzheimer's Support Group meets the first and third Wednesday of each month at 3 p.m. in The Inter-Faith Chapel library. For more information, call Sunny at (301-438-2446).

Bereavement Support Group: If your spouse or long-term partner died in the recent past, you may be eligible to participate in a twice-monthly bereavement support group that meets every other Tuesday, 2-3:30 p.m., in the conference room at MedStar Health, 3305 N. Leisure World Blvd. CaringMatters sponsors group meetings. Registration and a phone conversation with Jim Rossi, director of adult bereavement at CaringMatters, is required before attending. If interested, please call Jim at (301-990-0854).

Fitness Center: One of the Fitness Center's personal trainers leads a free orientation tour of the Fitness Center on the second Tuesday of every month at 2 p.m. Learn how to use the equipment and facilities. Registration is not required.

Free Blood Pressure Testing: Come to Clubhouse I for free blood pressure testing, available on the first and third Tuesdays of the month from 9-11 a.m.

Memory Café: The Memory Café meets the last Thursday of every month from 2-3:30 p.m. in Clubhouse I. The program provides social engagement for individuals living with early stage memory loss. Registration is required. For more information, call the manager at (240-428-1342) or the National Alzheimer's Association at (1-800-272-3900) or (TTY: 1-866-403-3073) or visit (www.alz.org).

Parkinson's Support Group: The Leisure World Parkinson's Support Group was created under the auspices of the Parkinson Foundation of the National Capital Area to provide support to patients suffering from Parkinson's disease (PD) and their families and caregivers. The group meets the second Tuesday of the month at 3 p.m. in Clubhouse II. Usually there is a presentation by a speaker with knowledge about PD, physical therapy or some other related subject, followed by a period of Q&A. There are no memberships or fees to pay, and the meetings are open to anyone who may be interested. Questions? Contact Ray Weil at (301-598-3447) or (raywwjr@hotmail.com).

Stroke Support Group: You are not alone! The Leisure World Stroke Support Group invites stroke survivors and caregivers to its monthly meetings on the third Tuesday of the month from 1-3 p.m. in Clubhouse II. No registration is needed, and all are welcome. For more information, contact Amy Boltz at (248-652-0304).

FITNESS CENTER HOURS

The fitness center in Clubhouse II is open to all residents and has cardio and strength training equipment, free weights and a studio room. Any resident wishing to use the fitness center for the first time must fill out a user agreement form, available at the Clubhouse II E&R office.

- Open seven days a week, 4 a.m.-9 p.m.
- Open Thanksgiving Day and New Year's Day, 8 a.m.-2 p.m.
- Staffed with trainers Monday-Friday, from 7:30 a.m.-3:30 p.m., and Saturday from 7:30 a.m.-11:30 a.m. (Excludes holidays)

■ FISH (Friends in Sickness and Health)

FISH Helps Veterans Attend D-Day Event

by Beth Leanza

FISH helped a local Masonic lodge bring veterans to a D-Day remembrance event this past June by lending wheelchairs.

FISH is always ready and willing to lend equipment that is needed for a short term, such as for a sightseeing trip to Washington, D.C., or to help people participate in an event that would be difficult otherwise.

About FISH

FISH is a volunteer organization that lends donated assistive equipment to residents and employees. The FISH office in Clubhouse II is open Monday to Friday from 10 a.m.-4 p.m. At other times, the E&R department can provide assistance. The office's phone number is (301-598-1345).

FISH helps other clubs by accepting items they collect for

charity, such as glasses, hearing aids and can tabs. FISH is happy to be the place for others who are collecting items for a good cause.

Lost and Found

The FISH office also houses lost and found items, such as umbrellas, reading glasses, water bottles, jewelry and more.

Residents and employees who've misplaced an item are encouraged to check for it at the FISH office, as some of these items will soon be donated to other organizations. FISH will not donate or dispose of car keys or cell phones. A staff person at the E&R office can assist residents when the office is closed.

Want to Help?

To volunteer with FISH, call Beth Leanza at (301-598-4569). New members are asked to first sit in with a volunteer for a short training session.

HEARING

HAPPENS IN THE BRAIN



CONNECTIONS

HAPPEN IN THE HEART

**CALL TODAY TO SCHEDULE
AN APPOINTMENT!**

301.637.7238



Hearing HealthCare, Inc.
Doctors of Audiology
Serving the community since 1996

Wheaton | 3913 Ferrara Dr
Rockville | 2403 Research Blvd, #100

HearingHealthCareInc.com 

CLUBS, GROUPS & Organizations

■ Ceramics Club

Club Embraces Ceramicist of the Month Judy Heir



From left, ceramicist of the month Judy Heir and a teapot and jewelry made by Heir, photos courtesy Judy Heir

by Meriel Brewer

Ceramicist of the month Judy Heir is a former rare bookshop owner and teacher who has always found time for art in her life, showing her students how they could be creative through writing and art.

During her 30-odd year career, she studied at the Center for Visual Arts in Summit, New Jersey, where she learned to be free with paints and water. “I progressed from oils to acrylics and finally to what I love most – water-

colors,” she says. “From there, I branched out to collage and mixed media.”

After moving to Leisure World, Heir was introduced to the Ceramics Club where she discovered another way to express her artistic abilities. She has created many charming pieces using the Club’s selection of standard molds, and then employed the excess clay to fashion her unusually attractive jewelry.

Her artistic flair also extends to her garden plots, which display her delightfully whimsical garden signs. Heir’s

ceramic arts are on display all month in the showcase at Clubhouse II, so stop by and enjoy.

The Club welcomes new members, so drop by the Ceramic Studio and meet some

members and view pieces for sale in the gift shop – all proceeds go to charity. Annual Club membership is just \$10 and includes instructions on how members can create their own ceramic artwork.

July 15: Washington DC Natives and Friends Holds Second Meeting

by Ann Nash

The group’s second organizational meeting is on Monday, July 15, at 2 p.m. in Clubhouse I.

Organizational procedures will be finalized to establish the Washington DC Natives and Friends club in Leisure World. Residents born and/or reared in Washington, D.C., are especially invited to join.

Come prepared to participate in planning relaxed, informative and fun-filled afternoons with other Washingtonians in monthly “Afternoon Coffee” socials that may include videos and lectures on the city, plus other activities of common interest.

For more information or to confirm your participation, contact Grace Cooper at (westpark6712@yahoo.com) or Ann Nash at (branchaffairsetc@gmail.com) or (301-598-2383).

■ Italian Social and Cultural Club

Enjoy the Many Perks of Membership

by Flo Merola

During these carefree summer days, residents will find members of the Italian Social and Cultural Club on the bocce court every first and second Friday of the month at 10 a.m. Join us for an hour of friendly competition.

The Club’s first event of the next membership year is the very popular Café Cinema on Sunday, Sept. 22, at 2 p.m. in the Clubhouse I Crystal Ballroom.

Dessert and coffee will be served prior to viewing three hilarious episodes of “I Love Lucy Goes to Italy.”

The cost is \$10 for members and \$12 for non-members.

Membership

Becoming a member of the Club costs \$12 per person, per year. The membership year is from Sunday, Sept. 1, 2019 to Monday, Aug. 31, 2020.

To attend the Café Cinema and/or to pay for membership, mail checks (payable to the Italian Social and Cultural Club)

to Paul D’Angelo at (3310 N. Leisure World Blvd., Apt. 310, Silver Spring, MD 20906).

Prevent waiting in line at the Club’s first event by picking up a membership form in the Club’s mail slot located in the Clubhouse I E&R office. For more information contact Barbara Kaminski, membership chairman, at (301-847-9313) or (bkaminski0064@gmail.com).



Guild's Artists Learn from the Masters

by Ann Bolt

American painter Edward Hopper is not enrolled in the art classes at Rossmoor Art Guild (RAG) but his painting style is showing up in paintings hanging on the walls of Clubhouse I.

Hopper's works evoke a feeling of loneliness, in spare and lean rendering. Two paintings most known for portraying this tendency are "The House by the Railroad," from 1925 and the "Nighthawks," painted in 1942.

He was stoic, quiet, introverted and painted with strong light and dark contrasts. He chose subjects from everyday American life, being born and buried in New York. His works often show gas stations, motels, restaurants, railroads and street scenes.

Come visit the exhibit in Clubhouse I during July and August and see if you can spot the paintings created in the style of Hopper. These paintings are part of the "In the Manner of..." exhibit.

The style of Gustav Klimt is also featured. Klimt was an Austrian symbolist painter from 1862-1918. His subjects were the female body adorned in elaborate costumes. His father was a gold engraver and



From left, a version of Hopper's "Nighthawks," with more socializing than the original; gold and silver and elaborate costumes in the manner of Klimt; and Hopper's lonely house on the hill. Photos by Ann Bolt

that influence carried on into the 'golden phase' of Klimt's painting career.

He is known for his portrait of Adele Bloch-Bauer, 1907, using both silver and gold leaf on canvas. He lived a simple life, almost cloistered, painting in a deliberate and calculated style.

Check out the exhibit in Clubhouse I to see other artists referenced in the work of studio members.

Artists' styles replicated also include include Peter Max, son of German Jews, who fled Berlin in 1938 and eventually settled in New York. Known for using bright colors, his works are associated with visual arts and the culture of the 1960s.

Simon Bull is an English-

born artist living in America who created a series of paintings that celebrated the life of Muhammad Ali. He in turn was commissioned for a portrait of Barack Obama.

And that is how it is done: study the artists who have come before.

Open Studio

RAG is featuring a new Open Studio session on Tuesdays from 1-3:30 p.m., in addition to the Saturday morning Open Studio. Members work independently with their own talent and supplies.

Enjoy the camaraderie with fellow artists, but remember to clean up the workspace at the end of the session, including the tops and the sides of the tables.

Vacancies and Classes

RAG's board has vacancies for the position of secretary and co-vice president for the next year, starting in September. For questions, call Judy Kirkland, nomination committee chair, at (301-938-3630).

Residents who might be interested in a summer class are encouraged to visit the studio and sign up for a class or two. The offerings include oil painting, portraits and watercolor for beginners and experienced artists.

Summer classes start the week of Monday, July 15, and continue to Saturday, Aug. 24. Classes are \$65 for residents and \$70 for non-residents. \$15 membership dues are required.

■ Vegetarian Society of Leisure World (VSLW)

July 25: Group Has Lunch at Vegetable Garden Restaurant

by Bob Fenichel

During July and August, the Vegetarian Society of Leisure World (VSLW) will not have its monthly meetings, but will continue to have monthly vegan luncheons at local restaurants.

On Thursday, July 25, members visit the always-popular Vegetable Garden Restaurant (Chinese vegan) at 1 p.m. in Leisure World Plaza. To attend, RSVP by Thursday, July 18,

to Helen Gross at (hgross75@verizon.net) or (301-438-2077).

About VSLW

Additional information on VSLW activities can be found at (www.vslw.org). All residents are welcome at VSLW activities; they don't have to be vegetarian to participate.

The mission statement of VSLW is "to support group members in maintaining a healthy lifestyle by eating a plant-based diet."

The Market in LW is #07!

15316 Pine Orchard Dr, 1-G

14809 Pennfield Circle, #215



JUST SOLD!

JUST Listed & Contract Submitted the FIRST DAY!

Bright, spacious, updated kitchen, gorgeous baths & much more!



COMING SOON!

Villa Cortese "K" Model

Sunny, Handsome unit, over 1300 sf, white cabinets, new SS appliances, laminate floors & more!

My Listings are Selling FAST!

Thinking of selling? Let me show you how I get stronger offers faster with my "coming soon" strategy. Call today!

Weichert
Office: 301-681-0550

Deborah Younkens
240-460-9557
Email: dyounkers@weichert.com



Auditions Begin for ‘70 Girls 70’

by Hannette Allen

Fun and Fancy’s big November show is the comedic “70 Girls 70,” which features plenty of singing and dancing. The show’s music and lyrics are by Kander and Ebb, the songwriting team that brought theatre-lovers “Cabaret.”

Based on the 1958 play “Breath of Spring” by Peter Coke, the musical concerns a group of larcenous old folks who steal furs from various New York City stores with the intent of using the proceeds from their resale to buy their Upper West Side retirement hotel, which is slated to be sold to developers.

Auditions

Auditions for “70 Girls 70” are held on Wednesday, July 10, from 6-9 p.m. and Sunday, July 14, from 3-5 p.m. in the Clubhouse II auditorium. Auditions are open to

all residents, but Fun and Fancy membership will be required to perform in the show.

Audition sheets are required. They are available in Clubhouse II E&R office for those who wish to fill them out in advance; they will also be available at the auditions.

Bring a photo of yourself to the audition, and attach it to the audition sheet.

The director asks that residents audition with any song that is not from the production. Bring accompaniment music for the pianist, if possible. Tap dancers are reminded to bring their tap shoes.

Residents who don’t want to perform but would like to be part of this fun show are encouraged to sign up to help backstage, work on makeup or costumes, sell tickets, usher or learn how to work in the sound/light booth.

Show’s Contacts

The show’s producers are Gerry Kaufman and Maureen Harris. Kaufman can be reached at (301-438-7452) or (queenger1@aol.com), and Harris is available at (301-598-4505) or (michas21791@gmail.com).

Residents who email Kaufman or Harris are asked to type “70 Girls 70” in the email’s subject line.

Community Show

The annual Community Show, sponsored by the E&R Department and produced by Fun and Fancy Theatre Group, was greatly enjoyed by the audiences at three performances in June.

The show, produced and directed by Joan Bowar,

featured singers and dancers representing Fun and Fancy and several other Leisure World clubs and organizations.

The show’s second act, “A Hodgepodge of Fun and Fancy Theatre Favorites,” provided many old favorites and new numbers. The audience got to experience, once again, “I Got You, Babe,” “The Sound of Music,” “Far Away Places,” “Blues in the Night” and a hilarious performance of “I Am a Man of Constant Sorrow.”

The dancers treated the audience to the mambo, the rumba and an energetic tap number danced to “Mack the Knife.”

Leisure World is gifted with so much talent! Thanks to all who participated.



THE SCOOTER SHOP

877.224.2294
www.yourscootershop.com

Now located inside the MedStar Medical Center at Leisure World. Call today to schedule an appointment with our sales and service staff for new equipment, rentals, or repairs. We provide in-home evaluations and repairs.

Hours of Operation: Monday - Friday 10am - 3pm
APPOINTMENT ONLY PLEASE, No Walk-Ins



Shelagh Hodson, Elizabeth Brooks-Evans, Maureen Harris and Annette Crowe sing “My Girl” at the Community Show.



“I Am a Man of Constant Sorrow” performed by Maureen Harris, Dee Smiley and Elizabeth Brooks-Evans in the Community Show. Photos by Myriam Lawrence

KEEP UP WITH YOUR COMMUNITY



Leisure World of Maryland
is on facebook at:
www.facebook.com/LeisureWorldofMaryland/

Club Demonstrates Real Railroad Operations



At left, a youngster is transfixed by a passing freight train. At right, crowds gather around the Club's expansive HO layout. Photos by Alan J. Goldstein

by Alan J. Goldstein

The Model Railroad Club's first live demonstration of real railroad operations during its summer open house was a huge success and very educational for all attendees.

The demonstration was the culmination of a mission by Club members to transform its expansive HO layout from trains circulating on a traditional loop (albeit a long one) around the Club's layout space to something more representative of actual railroad operations.

Train Routes

Passenger trains sometimes do the equivalent of traveling on a continuous loop as they go from city to city and back again. Freight trains almost never go in a loop. Rather, they typically carry a load of cargo from a supplier to that firm's customer.

For example, a mine will sell iron ore to a steel plant and a lumber mill will supply a furniture manufacturer with wood, and it's the railroad's job to ship those goods from the supplier to the desired destination.

Performing these operations is a lot more complex than running trains in a circle as members ordinarily do at the open house. Freight cars need to be picked up from individual customer locations and assembled in local freight yards into trains bound for specific destinations.

When the destination is reached, individual cars may be

dropped at a customer location and empties picked up for the ride back.

At the open house, Club members demonstrated how real railroad freight operations are performed, much to the delight of visitors.

A Biannual Tradition

Twice a year, the Club opens its doors to the community at large, including the operation of its expansive HO layout that features towns, industrial areas, mines, farms, mountains and rivers.

Its sizeable N scale layout tunnels through mountainous terrain and passes cities and industrial complexes, with a trolley that stops to pick up and let off passengers at stations throughout the city.

The Club also operates a sizeable O scale Lionel layout that thunders along, captivating the youngsters just as it did their parents and grandparents decades earlier.

Interested in Joining?

The Club is currently seeking new members.

Residents who think they might like to participate in the Club's operating sessions or work on the layouts, or who simply enjoy the camaraderie of membership, should consider joining.

Meetings are on the second

Thursday of the month in Clubhouse II, with working and operating sessions every Monday and Wednesday from 5:30-7 p.m., and Thursday from 2-4 p.m. at the train yards in the basement of Clubhouse II.

For further information, call Marilyn Chmielewski, president, at (301-438-3259).

SCHOENBAUER

FURNITURE SERVICE, INC.

J

1st Generation Craftsmanship

Repair, Refinishing, Antique Restoration & Reupholstery



301-884-3011 • schoenbauer.com
 30507 Potomac Way, Charlotte Hall, MD 20622

THINKING OF SELLING OR BUYING? Call
 Nina! Direct: 240-888-8557 Office: 301-598-7500


www.longandfoster.com/ninadavis

LONG AND FOSTER GOLD TEAM MEMBER
 AND TOP PRODUCER OF OFFICE



Leisure World Plaza
 3836 International Drive
 Silver Spring, MD 20906





Setting the Table to Defeat Trump

by Roger Blacklow

The Democratic Club will be very active in 2019-2020 to elect a Democrat as president, turn the Senate blue and retain House majority.

All residents can help by phone banking, writing postcards and letters, providing voter registration and education and attending rallies and other events. The Club makes its events fun, too.

Some of the committees that will be active include communications, politics, legislation, program, membership and

hospitality. All resident participation is welcome; contact the Club at (leisureworldldemclub@gmail.com).

Happy Hour

The Club holds its annual August happy hour on Thursday, Aug. 8, from 5-8 p.m. in the Clubhouse I Crystal Ballroom. Barring the resignation of President Trump, it will be the Club's main fun gathering this summer.

Membership

Some members have paid

their dues but are not receiving the Club's email publication, "Donkey Dispatch." These members are asked to contact

the Club at (leisureworldldemclub@gmail.com).

Members who have not paid their dues for the coming year, which runs from June 1, 2019 to Sunday, May 31, 2020, should send

a check for \$15, payable to the Democratic Club of Leisure World, to Jon Fife at (3200 N. Leisure World Blvd., Apt. 1001, Silver Spring, MD 20906).



Be sure to include your email address.

New Officers

With Rep. John Sarbanes presiding, the following officers were sworn in as the leadership of the Democratic Club: Roger Blacklow, president; Judy Frumkin, first vice president; Sandy Zimmet, 2nd vice president; Jon Fife, treasurer; Karen Brooks, secretary; and Arthur Blair, Jane Greene and Pat Duran, at-large members.

The Club's board meetings are held on the first Thursday of the month at 1 p.m. in Clubhouse I.

■ LW Green

July 24: Environmentalist Discusses the Healthy Green Maryland Amendment

by Valerie Williams
and Sarna Marcus

LW Green's program on Wednesday, July 24, will focus on the Healthy Green Maryland Amendment and will feature environmentalist and philanthropist Rabbi Nina Beth Cardin. The program is at 2 p.m. in Clubhouse I.

The Healthy Green Maryland Amendment, House bill 472, explicitly protects Marylanders' right to a healthy environment – clean water and air, healthy land, an ecosystem that can sustain itself and a

stable climate – now and in the future, by enshrining it in the State Declaration of Rights. Cardin urges, "In the face of an uncertain federal landscape, Maryland needs to take steps now to defend our right to a healthy environment."

This amendment will provide a legal foundation for Marylanders to hold the state accountable "for its obligation as a trustee of the natural resources of the state to care for those natural resources," according to Cardin. The amendment would also open the doors for green initiatives and energy alternatives throughout the state.



Re-think and Re-examine

How many ways can people show their love for Mother Earth? Many people are learning how to reduce, reuse and recycle. Now they are also learning to "rethink" – to re-examine our traditional assumptions.

Many of humanity's habitual actions have a lasting effect, much of it destructive. The



Environmentalist and philanthropist Rabbi Nina Beth Cardin. Photo courtesy (www.jmoreliving.com)

challenge therefore has become to rethink our old assumptions – to convert our old behavior through a new understanding.

About LW Green

LW Green is a group of residents who are striving to be better stewards of the environment through education and advocacy. However, residents don't have to be experts in these topics to join.

All interested residents are invited to attend the Group's meetings held the fourth Wednesday of each month at 2 p.m. in Clubhouse I. For more information, visit (www.lw-green.com).

Family Owned and Operated

Serving LW For Over 30 Years



I saved \$150
on my glasses at Eyeland!

\$150 OFF
a pair of
prescription glasses

eyeland
301-871-6454

13808 Georgia Ave. 1 mile south of LW.

July 15: Judaic Study Group Discusses Biblical Judges

by Barbara Eisen

The July meeting of the Judaic Studies Group is Monday, July 15, at 1:30 p.m. in Clubhouse I, and the topic is the biblical judges.

Do you know how many judges are named in the Book of Judges? Did you know that there are “major” and “minor” judges? Who were these people and how did they get to be judges? Can you find the connection between one judge’s daughter and a Mozart opera?

Peri Schuyler will lead this discussion. Join the Group to learn more about this often-overlooked group of biblical personages. Pick a name and

add another bit of enlightenment to the session! All are welcome, men as well as women. There is no charge.

For questions or more information, contact Peri Schuyler at (perislaptop@aol.com) or (301-869-2968); Marcia Elbrand at (marci aelbr@gmail.com) or (216-496-6633); Shari Goldstein at (240-293-6442) or Naomi Kline at (nbk165@comcast.net) or (240-669-7683).

Upcoming Events

There will be no regular meeting of Hadassah in July. Cantor Michael Kravitz presents an interesting new program entitled “The Jewish Influence in the Rock ‘n’ Roll

Era” on Wednesday, Aug. 21, at 2 p.m. in Clubhouse I.

Greeting Cards

Elaine Schenberg and Jan Bloom sell Hadassah greeting cards. The prices are \$2.50 each or five for \$10.

Cards are displayed and sold at every Hadassah meeting. Call Elaine at (301-598-0079) or Jan at (301-593-7720) to buy cards between meetings.

Youth Project

Larelda Gruber (301-598-5922) is chair of Youth Aliyah/Children at Risk. This project helps disadvantaged children in Israel. The goal is to create a circle of \$1,000,

made by individual contributions of \$40.

Send your donations to Larelda at (3200 N. Leisure World Blvd. #201, Silver Spring, MD 20906).

General Information

Hadassah sponsors many activities to further the worthwhile projects it supports in medical, educational and social programs in Israel and the U.S.

If interested in knowing more about Hadassah, contact one of its membership vice presidents: Lois Fields at (301-585-9804) or (loisfields2@earthlink.net) or Natalie Rosen at (301-279-5640) or (bnrosen@comcast.net).

■ Jewish Discussion Group

July 28: Middle East Expert Discusses ‘The Boycott Threat to Israel on Campus and Beyond’

by Jerome “Jerry” Cohen

At the Group’s next meeting on Sunday, July 28, Dr. Mitchell Bard, the executive director of the nonprofit American Israeli Cooperative Enterprise and an authority on U.S. Middle East policy presents a talk entitled “The Boycott Threat to Israel on Campus and Beyond and How to Fight Back.” The meeting is at 10:30 a.m. in Clubhouse II.

Bard was named one of the “top 100 people positively influencing Jewish life” by

The Algemeiner Newspaper. He has appeared on local, national and international media outlets, his work has been published in academic journals, magazines and major newspapers and he has written and edited 23 books. He is also the director of



Dr. Mitchell Bard, courtesy photo

the Jewish Virtual Library and holds a doctorate in political science from UCLA.

Don’t miss this featured presentation; a large turnout is expected.

About the Group

The Jewish Discussion Group invites

people of all faiths to attend its free group sessions held on the fourth Sunday of the month from 10 a.m.-noon in Clubhouse II.

The Group will not hold discussion sessions in August or November.

For additional information or to have your email address added to the monthly notification list, call or email group moderator Jerry Cohen at (240-970-5024) or (jcohen@jcbb.com).

IMAGES SALON

Leisure World Plaza
Mon-Sat 8-7, Sun 10-5
301-598-3000
Barber: 301-598-4900

Meet our friendly, talented team!

- Over 30 years’ experience
- Specialize in foil highlighting, trendy colors and updos. You name it, we do it!
- Affordable prices

We go above and beyond to please our guests. We promise you that you will leave very happy and satisfied with our excellent technical skills and great customer service.

3810 International Drive
Silver Spring, MD 20906



NOW TOURING!

Assisted Living and Memory Care with a whole lotta heart.

In other words, The Landing has a whole bunch of heartfelt help and care. But don’t take our word for it, come see for yourself. Please call 240.377.0084 now to schedule a tour. And bring a friend. Or come meet a few new ones.

THE LANDING
OF SILVER SPRING

13908 New Hampshire Ave • Silver Spring
240.377.0084 • TheLandingofSilverSpring.com

A LEISURE CARE ASSISTED LIVING & MEMORY CARE COMMUNITY



Hearing is one of the joys of life. **Don't neglect it!**



From left: Kathryn Balestino-Estes, AuD., Dr. Heather Schwartzbauer, M.D., Allyson Bull, AuD., Dr. Nicholas Mehta, M.D., Dr. Cynthia Chrosniak, M.D.

We have a team of audiology doctors and otolaryngology physicians who work together in two convenient locations to help you.

MEET OUR AUDIOLOGISTS

Dr. Kathryn Balestino-Estes and Dr. Allyson Bull

- Comprehensive and personalized evaluations
- The latest digital hearing instruments from leading manufacturers
- Solutions to fit your hearing needs, lifestyle, and budget
- Many insurance plans offer hearing aid benefits
- Financing Plans available

We are conveniently located in the Professional Building in the Leisure World Shopping Center above Sandy Spring Bank.

LEISURE WORLD PLAZA
3801 International Drive
Silver Spring, MD 20906,
Suite 206

PROFESSIONAL OFFICE BUILDING
18111 Prince Phillip Drive
Olney, MD 20832, Suite 224

CALL TODAY TO SCHEDULE AN APPOINTMENT!

301-774-0074

WWW.MONTGOMERYCOUNTYENT.COM

\$300 Off

a pair of digital hearing aids

\$400 Off

a pair of digital hearing aids when you upgrade your existing aids



Montgomery County ENT
EAR, NOSE AND THROAT SPECIALISTS

Drs. Chrosniak, Schwartzbauer and Mehta, M.D.

■ Jewish Residents of Leisure World

July Services, Membership Renewal and Making Donations

by Jonas Weiss

Rabbi Gary Fink leads a Friday Conservative Sabbath service on Friday, July 5, at 7:30 p.m. in The Inter-Faith Chapel.

On Saturday, July 13, cantor Michael Kravitz leads a Conservative Sabbath service at 9:15 a.m. in Clubhouse II.

Victor Spitz will chant the Haftorah and Jonas Weiss will give the Parsha Chukas d'var

Torah: the significance of Miriam's life and of Moses' actions that kept him from entering the promised land.

Rabbi Moshe Samber and volunteers conduct Sabbath services with discussions on the Torah portion and rabbinical writings on Saturday, July 6, 20 and 27 at 9:15 a.m. in Clubhouse II.

Membership

It's time to join JRLW or renew membership for the 2019-2020 fiscal year.

Mail checks for \$20, payable to JRLW, to Marsha Bernstein at (3210 N. Leisure World Blvd., Apt. 921, Silver Spring, MD 20906).

Include your phone number and email address if possible. A convenient form is in the JRLW newsletter.



Donations

For the Torah fund mail checks, payable to JRLW, (\$25 minimum) to Carol Wendkos at (14805 Pennfield Cir., Apt. 212, Silver Spring, MD 20906).

Donations for prayer books should go to Janet Lazar at (15311 Beaverbrook Ct., Apt. 1B, Silver Spring, MD 20906). Janet is asking for someone to help her label the prayer books.

Donations for Kiddush (\$25 minimum), an Oneg (\$25 minimum), Yiskor or general tzedukah should go to Susan Weiss at (3739 Glen Eagles Dr., Silver Spring, MD 20906).

■ Jewish War Veterans

Charles B. Krieger Post 567

New Slate of Officers Installed at Brunch

by Jerome "Jerry" Cohen

The Jewish War Veterans Post 567 is taking its summer break and will host its next brunch on Sunday, Sept. 8, at 10:15 a.m. in the Clubhouse I Crystal Ballroom. The Post's brunches are open to all residents.

During the June 2 brunch, the following new slate of officers were installed for the coming year: Fred Shapiro, commander; Jerome Cohen, senior vice commander; Larry Barshay, junior vice commander; Harvey Kaplan, judge advocate; Edwin Cohen, quartermaster; Moshe Samber, chaplain; and Ted Hyman, officer of the day.

The Post is actively seeking prospective applicants who are Jewish veterans, served on active duty in the Reserves or in the National Guard and hold an honorable discharge.

For membership information, contact Jerry Cohen at (240-970-5024) or (jcohen@jccbb.com).

Aug. 15: Italian Night Features Buffet Meal and Entertainment

by Carole Mund

NA'AMAT holds an evening of Italian food and entertainment on Thursday, Aug. 15, at 6 p.m. in the Clubhouse I Crystal Ballroom.

The delicious buffet includes eggplant parmesan, salmon and pasta primavera accompanied by salad, drinks and scrumptious desserts.

A female vocalist will provide the evening's entertainment.

The cost is \$37 per person. To reserve a spot, mail a check, payable to NA'AMAT, to Harriet Chaikin at (15101 Interlachen Dr., #216, Silver Spring, MD 20906) by Thursday, Aug. 1.

Any inquiries can be made to Harriet at (240-560-7487).

What is NA'AMAT?

NA'AMAT is an international movement with more than 300,000 members in 10 countries. NA'AMAT members are a network of inspirational women dedicated to social justice and equality.

NA'AMAT members raise money to fund crucial support services and educational programs for women, children and families in Israel. In the U.S., NA'AMAT advocates for legislation and participates in coalitions for civil rights and child welfare.

Membership in NA'AMAT helps support the many fund-raising activities that guarantee the continuation of these vital services and programs.

Tribute Cards

Tribute cards and memo-

rial cards are the perfect way to acknowledge the events of friends and family. Funds collected from tribute cards support and maintain the essential programs NA'AMAT sponsors and are an easy way to attain donor credit.

NA'AMAT has cards to honor all occasions, from congratulations for a special event to memorial cards. Each card is \$4 if purchased and sent by the member, or \$4.50 if sent by Lenore Kallen, tribute chairperson. Full donor credit is given for each card. For questions, contact Lenore at (301-922-4348).

Upcoming Events

The Club holds its first open meeting of the season on Wednesday, Sept. 4. Cantor

Michael Kravitz will present "A Program of Jewish Songs" at 12:30 p.m. in Clubhouse I.

Kravitz is known to many in the Washington D.C. area. All residents are welcome and refreshments will be served.

NA'AMAT sponsors a trip to see the fun-filled show, "Capitol Steps" on Saturday, Sept. 14. The trip includes bus transportation and event tickets. For more information, check the Club Trips section of this publication or call Esther Goldstein at (301-847-9215).

For more information about NA'AMAT RBZ Club, contact co-presidents Linda Schoolnick at (301-681-1076) and Gladys Blank at (301-438-9666). For Book Club inquiries, contact Barbara Tahler at (240-669-6961).

■ New Yorkers and Friends Group

Group Elects Officers in September

by Linda Mahler

The New Yorkers and Friends Group will not hold monthly meetings in July and August, but will continue to meet for socializing and lunch on Thursday, July 11, and Aug. 8, at noon in the Terrace Room restaurant in Clubhouse I.

Prior to lunch, those wishing to get together to play "New York Bingo" should meet at 10:30 a.m. in Clubhouse I. Prizes will be awarded to winners and participants are asked to bring pennies for bingo markers. All residents are welcome to join in the fun.

Volunteering

The Group's volunteers enjoyed an appreciation luncheon at Strathmore Elementary School on June 12, where their work on school projects and administrative duties as well as time spent as classroom aides was gratefully acknowledged.

A Moving Up Graduation Ceremony incorporated a new

award to students who demonstrated improvement over the year. The award was suggested by Group president Connie Blake and was well-received by parents and staff.

Plans are being made for the Strathmore students to perform a concert at the school around Grandparents Day, and a donation will be presented from the Group. For more information about volunteer opportunities

at Strathmore Elementary School, contact Ruth Becker, children's coordinator, at (yabobecker@aol.com) or (301-288-4276).

Group Information

Monthly meetings resume beginning on Thursday, Sept. 12, at 10:30 a.m. in Clubhouse I. A quorum of members must be present to elect officers for the upcoming

year. Nominations will be taken from the floor and dues will be collected for the next fiscal year, which begins in July.

The organization takes pride in making a difference in the community while continuing to enjoy new experiences and camaraderie.

For more information about the Group, contact Connie at (connieblake1@verizon.net) or (301-438-2667).



*Providing Private Duty Nursing Care...
generation to generation*

(301) 890-7575
3508 Greencastle Road
Burtonsville, MD 20866-1940

A1ActionNursingCare.com

What's Age Got to Do With It?

by Beth Leanza

Baby boomers are a fun-loving, social group that like to get together to watch movies, see live theater productions, go out to eat and picnic – the Club had about 100 people at its first picnic of the season in June.

Club members share snacks after watching movies in the Clubhouse II auditorium, and sometimes eat out before attending a movie at a nearby theater. The Club also enjoys the music of the '50s and '60s and enjoys playing board games.

Age has nothing to do with it; the Club does not check ID, so consider joining. The Club holds most of its events during evenings and weekends to allow members who are still working to attend.

Ready to Join?

To become a member of the Club, send a check for \$5 per member, payable to Baby Boomer Club, to Susan Landesberg at (3505 Twin Branches Ct., 37-C, Silver Spring, MD 20906).

Include your address and phone number (if not on the check) and email address. Members who do not have email should keep in contact with a member who does.

Adding the Baby Boomer group email address (bbclw@googlegroups.com) to your contact list or address book will help to prevent the Club's emails from ending up in the spam or junk folder. The Club keeps its emails limited to activities that members might enjoy.

Club members who have joined but are not receiving emails are asked to contact Beth Leanza at (301-598-4569) or (bethlea12020@gmail.com).

The Club's website is available at (<https://sites.google.com/site/bbclwmd>) and includes a calendar with walk information.

Friday Hikes with Joyce

Anyone is welcome to join the walks led by Joyce Richardson on Fridays. Most walk about three miles, but some walk halfway and return. To carpool to the trail,

contact Joyce at (301-598-7098) or (777cheekie333@gmail.com) by Thursday night.

- July 12 – Seneca Creek State Park (Gaithersburg) Use Google Maps to navigate. Meet at the boathouse at 10:15 am. Bring water and a lunch. Enter the park by turning left off of Clopper Road and onto the park entrance road, which is just past St. Rose of Lima Church on the right. Drive past the entrance kiosk, turn right at the T and then take the first left turn. Quickly turn right into the first parking lot. Drivers should be across from The Pines picnic area and should see the big playground in front of them. Follow the signs towards the boathouse, but stop short and park in the lot with the playground and restroom building.
- July 19 – Meadowside Nature Center (Rockville) Use Google Maps to navigate to the park. Meet in the parking lot at 10:15 am. Bring water and a lunch.

Sunday Morning Walks

Join a group of walkers that meet up on Sundays at 8:30 a.m. near Arden Court (across from Kelmscot Drive) to walk the entire Leisure World Boulevard circle.

Afterward, join the walkers for breakfast. For more information, email Ted Michos at (Tedmichos@gmail.com).

Weeknight Walks

For a shorter walk (about one mile) around the Broadwalk in Montgomery Mutual, meet on weeknights at 7:15 p.m. in the lobby of Clubhouse I. No announcement is made; just come and introduce yourself.

AVA Walks

The American Volkssport Association (AVA) holds events and provides guides to local walks of interest. More information about AVA walks is available on the Club's website at (<https://sites.google.com/site/bbclwmd>). Click on Walks, below the events calendar.

Experience Matters.

EXPERIENCE
a tradition of
excellence in senior
living since 1910.

EXPERIENCE
a higher standard
in dining.



EXPERIENCE
award-winning
leisure and lifestyle
programming.

EXPERIENCE
unmatched on-site
medical care.

Ring House...Your independent living experience starts here.

Call for your tour today **301-770-8448**.



Charles E. Smith
LIFE COMMUNITIES

Association Seeks Volunteers to Fulfill Committee Assignments

by Patricia Means

Members are needed through Tuesday, June 30, 2020 to serve on the following committees:

- **Amenities Committee:** executes appropriate actions to respond to illness, disability, death or other situations that affect a member or that person's immediate family
- **Membership Committee:** enrolls members, maintains membership roster and database
- **Program Committee:** performs long-range planning and execution of events, large and small, throughout the LWAAAC year
- **Public Relations Committee:** provides information about LWAAAC activities to members and the Leisure World community

Sign-up sheets for serving on committees are available at meetings.

Community Service

In May, LWAAAC awarded four graduates of James Hubert Blake High School in Silver Spring with scholarships of \$1,000 each.

The graduates will attend Montgomery College, Morgan State University and Goucher College in Maryland, and Trinity Washington University in Washington, D.C.

Membership

Membership in LWAAAC is open to all residents. If you have not made a membership commitment for the period of July 1, 2019 through June 30, 2020, now is the time to do so.

The dues for new and renewal membership are \$20 per person (checks only, payable to LWAAAC). Include an email

address and telephone number.

Payment may be made at meetings, via the LWAAAC mail

slot in the Clubhouse I E&R office

or mailed to (LWAAAC, PO Box 12316, Silver Spring, MD 20908).



FAMILY FOOT & ANKLE ASSOCIATES OF MARYLAND

Dr. Michael Frank
Dr. Marc Goldberg
Dr. Adam Lowy

3 Convenient Locations Minutes from Leisure World

OLNEY

Oland Professional Center
3408 Olandwood Ct. Suite 204
Olney, MD 20832

(301) 924-5044

KENSINGTON

Family Foot & Ankle Associates of Maryland
3930 Knowles Ave Suite 202
Kensington, MD 20895

(301) 942-8110

SILVER SPRING

Colewood Centre
10801 Lockwood Dr. Suite 260
Silver Spring, MD 20901

(301) 439-0300

www.MarylandFeet.com

Stein Room and Terrace Room
now offer DELIVERY!

**Available Monday-Friday
from 11 a.m.-3 p.m.**

No minimum order amount!

**Only a \$4 surcharge for
delivery.**

**Call 301-598-1330
to place your order.**

Club's New President 'Floods' Meetings with Jokes

by Al Karr

Meeting after meeting, new Club president John Lass offers a deluge of jokes for the

enjoyment of members of the Comedy and Humor Club.

He's not the only one bouncing funny tales and quips off Club members' ears, of course, but he's

the volume champion, presenting jokes far too numerous to mention. Stop by Clubhouse II on Tuesdays at 1:30 p.m. to enjoy the jokes – first, 'Lass' and always.

Those who recently took the standup mic include vice president Skip Schoening, treasurer Herb Hodes, Rudy Volin, Wally Becker, Ruth Becker, Sam Hack, Jack Melnick, Sumner Levin, Sunny Levin and Al Karr.

comes out, saying that he'll give each of them one wish. The clerk says she wants to be in the Bahamas, driving a speedboat without a care in the world. Puff, she's gone. The sales rep says he wants to lie on a beach in Hawaii with his personal masseuse and an endless supply of piña coladas. Puff, he's gone. The manager says, "I want these two back in the office after lunch." Moral: Always give the manager the first say.

Sample Jokes

Here is a sampling of those funnies:

- John – If Wile E. Coyote had enough money to buy all those Acme supplies, then why didn't he buy dinner? If corn oil is made from corn and vegetable oil is made from vegetables, what is baby oil made from? If electricity comes from electrons, does morality come from morons?
- A sales rep, his manager and a clerk are walking to lunch when they find an antique lamp. They rub it and a genie

- Rudy – Characters in shows from King Arthur's days: The knight who was afraid to fight: Sir Render The undercover knight: Sir Veillance The knight who always guessed right: Sir Miser The knight who showed up unexpectedly: Sir Prise The dancing knight: Sir Prance-a-lot
- Skip – A sign hung on a veterinarian's doorknob reads: Back in five minutes. Sit! Stay!

THE INTER-FAITH CHAPEL

A House of Prayer for all People



You are invited to join us each week for Sunday worship services held at 9:00 am and 11:00 am.

We are an inclusive Christian congregation celebrating diversity and seeking unity.

Visit www.inter-faithchapel.org for upcoming events.
3680 South Leisure World Boulevard
301-598-5312



18111

- ✓ Cutting-edge Microscope-centered Dentistry
- ✓ Dentures
- ✓ Gum Treatment
- ✓ Root Canals
- ✓ Sedation Dentistry
- ✓ Bonding
- ✓ Extractions
- ✓ Bleaching
- ✓ Veneers

We Cater to Cowards • Same-day Emergencies • Evening Hours
Will File Forms for All PPO Insurance Carriers

Look and feel your best!



**COMPREHENSIVE FAMILY
& COSMETIC DENTISTRY**

\$50 off your first visit

Not valid with third party plans, new patients only.

Located at MedStar Montgomery Medical Center
18111 Prince Philip Dr.
Suite T-17
Olney, MD 20832

T: 301-774-7887 • www.OlneyDental.com

Club Takes Armchair Visits to Egypt and Spain

by Elizabeth Brooks-Evans

The Going It Alone Club (GIAC) meets every Saturday for armchair travel at 2 p.m. in Clubhouse II, followed by various games at 2:30 p.m.

Armchair Travel

On Saturday, July 6, “Discovering Egypt” continues with the final video, which takes travelers to Alexandria, Egypt’s largest city, to experience the Roman amphitheatre and ruins, Pompey’s pillar, the Catacombs of Kom El Shoqafa, the Sphinx, Egyptian archeology and much more.

On Saturday, July 13, “Discovering Spain” begins by following the trail pilgrims have trod for centuries, from the French border to Santiago de Compostela in Spain’s northwest corner.

Along the way, stop off in Pamplona to run with the bulls, and dive into the unique

Celtic culture of Galicia – where Riverdance meets Flamenco!

Games

Games begin each Saturday at 2:30 p.m. right after armchair travel. Some members play bridge and Rummikub in the Clubhouse II lobby, while others play Mexican train dominoes in the Game Room. An old-fashioned Dominoes game is also available.

Members are also welcome to bring or suggest other favorite games. For more information about games, contact Sylvia Pachenker at (301-598-5325).

Trips

GIAC trips are open to all residents and their guests whether single or married. The following are currently scheduled trips for 2019:

- Aug. 22 – Harris Crab House on Maryland’s Chesapeake Bay awaits with

all-you-can-eat steamed crabs, shrimp, fried chicken, corn-on-the-cob, potato salad, coleslaw, desserts and beverages, including draft beer. The buffet meal is followed by a leisurely stop on the way home at the Amish Market to purchase fresh fruits, vegetables, fresh meats, homemade fudge, ice cream, crafts and much more.

- Sept. 16-20 – GIAC goes to Gatlinburg, Tennessee, for the “Pigeon Forge and Smoky Mountains Show Trip” which includes five spectacular shows and much more. This trip is fully booked, however, there is a wait list.

More detailed information on these trips can be found in the Club Trips section of this publication.

Sign-up for trips takes place during Saturday Afternoon

Live (SAL) from 1:30-3 p.m. in Clubhouse II when a representative of the program committee is available to receive payments and answer questions.

The GIAC newsletter, which also has more trip information, is also available at that time.

For questions about trips, call Joe Parker at (301-598-3457) or Sylvia Pachenker at (301-598-5325).

Membership

Residents wishing to sign up or renew their GIAC membership are invited to do so on each Saturday from 1:30-3 p.m. in the Clubhouse II lobby.

The membership fee is a nominal \$8 per year. The income from dues is used to pay Club expenses and enhance activities such as games and refreshments at periodic general meetings.

For more information about membership, contact Sylvia Pachenker at (301-598-5325).



Check out my 5 star reviews on [zillow.com](https://www.zillow.com) and [google.com](https://www.google.com)

**Inventory
is very low
and homes
are selling
fast!**

Call me to learn what
your Leisure World
home is worth
Phone 240-506-2434



- Free Professional Photos
- Free Home Staging
- Weekly Listing Updates
- Weichert Top Lister in May 2019
- Leisure World® Specialist
- Comprehensive Marketing Plan



ACTIVE

3330 N. LW Blvd.
1,480 sf, M model
3 bedrooms, 2.5
baths. Remodeled
kitchen. Separate
dining room with
built-ins. Scenic
golf course view.
Garage space.
List \$324,900



ACTIVE

3210 N. LW Blvd.
1,489 sf. Garage
parking space.
3 bedrooms, 2
baths. Light and
bright living and
dining room. New
paint, new carpet,
granite counters.
List \$360,000



ACTIVE

15115 Interlachen Dr.
F model, 1,115 sf.
2 bedrooms, 2
baths. Updated
kitchen. All new
stainless appl.,
new paint and
carpet. Indoor
garage space.
List \$210,000



COMING SOON

3005 S. LW Blvd.
1,315 sf. F model.
2 bedrooms and
2 baths. Large table
space kitchen.
Spacious living
room with FP, sepa-
rate dining room.
New paint, new
carpet. Scenic view.



Barbara Michaluk | Weichert

Call me direct 240-506-2434 (o) 301-681-0550

www.BarbaraSellsMDhomes.com / Email: michaluk@verizon.net

Authorized Leisure World® Specialist / E-Pro® Certified
Senior Real Estate Specialist® / Certified Staging Agent®
Internet Marketing Specialist® / Relocation Specialist®



It Pays to Work with an Authorized Leisure World® Specialist

Time to Join or Renew Your Membership

by Carole Mund

It's time to renew membership in or join the Rossmoor Women's Club (RWC) for the 2019-2020 year.

Membership is open to residents and non-residents and affords the opportunity to attend all meetings and trips.

The RWC's mission is to foster social interaction,

promote volunteerism and support charitable organizations in Leisure World and Montgomery County.

The organization provides a great atmosphere in which to make a difference in the lives of people in need and meet new people from around the community.

Charity and Events

The RWC provides annual college scholarships to high-achieving students attending Blake High School and to Montgomery College A.C.E.S. students with documented financial need.

In addition, funds and volunteer support services have been donated to a variety of charities, including A Wider Circle, a Head Start Program at Harmony Hills Elementary School, The Fisher House Foundation, which provides housing for families of wounded soldiers; Casey House and The Betty Ann Krahnke Center, which supports

women and children affected by domestic violence.

The Club also provides funds to support Leisure World programs such as FISH and the Fireside Forum.

In addition to the popular Chico's luncheon and other fundraisers, this year the Club has added hands-on projects that provide more opportunities for members to get involved in and enhance the many programs the Club supports.

Upcoming Trips

The RWC is planning a trip to enjoy a cherry blossom high tea and tour the Washington National Cathedral in Washington, D.C. New this year will be a year-end finale, which will feature a Severn River cruise viewing Annapolis Harbor.

To Join and Renew

Those who would like to be included in the annual member-

ship directory and handbook must join or renew their membership by Saturday, July 6.

To join or renew, mail a membership dues check for \$40, payable to the Rossmoor Women's Club, to Aggie Eastham at (Rossmoor Women's Club, 3100 N. Leisure World Blvd., #126, Silver Spring, MD 20906).

For questions or additional information, contact Aggie at (aggie.eastham@verizon.net).

Meet Our New President

Abigail Murton was recently elected as the RWC's president. "I am very excited to officially begin my term as President of the Rossmoor Women's Club. And I'm equally excited to work with such an excellent board, where each member brings valuable experience, unique talent and passion," Murton said.



New Club president
Abigail Murton,
courtesy photo



Mark C. Wimsatt Painting

Interior
Free Estimates

Leisure World References
* Special Discounts *
for Moving in or Moving out

SENIOR DISCOUNTS!

301-828-6500

Serving Leisure World for
over 35 years.

MHIC 10165 Insured

Leisure World trusts Family & Nursing Care



As a premier resource for in-home care services,

Family & Nursing Care helps families rest easy, knowing their loved ones are well supported. From that first cup of coffee in the morning to a sacred bedtime ritual to an unexpected need in the middle of the night, **we are here for you.**

To learn more, come meet **Kelly** and **Jeff** in our office in the Leisure World Medical Center.



Licensed as an RSA by the MD DOH, OHCQ, MD RSA License R2519R; MD NRSA 070605.

3305 N. Leisure World Blvd. familynursingcare.com (301) 588-8200

Anecdotes, Poems and Ponderings

by Denise Barker

The Writers of Leisure World met on June 20 to welcome some new members and to share their varied writings.

Marion Bedell wrote of a Rosh Hashanah service. Instead of looking at the human-made beauty of stained glass, "I was looking at God's artwork: people," she writes.

Woody Shields considered whether these are the "worst of times" or if that was the '60s with its extremes of opinion. Now we have electronic communication, email and daily bombardment of doom and despair.

John Moens wrote about a 1979 adventure he took with a friend to Palomare Mountain in California to see the world-famous telescope. They drove on very steep narrow paths in deep fog, thinking as long as they could feel anything under them it

was safe. Looking back on his youthful and daring trip, he felt that God was good to them.

Tom Anessi shared his feelings about writing: how hard it is to believe that people want to know your thoughts, and that every life is full of rich ideas and musings to be shared.

Susie Hooper Billstein shared a poem that told, "Life has a way of falling over itself." Jean Anessi wrote about the mysteries of time and how we use it and value them.

Denise Barker shared memories of her grandma and the stories she would tell her eight-year-old granddaughter.

Group Information

The Writers of Leisure World has a recently published collection of poems, stories and essays called "Lessons from Life" which is available to borrow from the library in Clubhouse I and is

for sale from Amazon, or is available by calling Woody Shields at (301-598-5141).

The Writers of Leisure World meets every other

Thursday at 11 a.m. in Clubhouse I.

The Club next meets on Thursday July 11, because of the July 4 holiday.

Wills, Wealth Planning & Trusts



Luann Battersby
Leisure World neighbor
3510 Chiswick Ct

Phone: 301-518-0423

Email:

Luann_Battersby@comcast.net

Housecall: No charge!

www.battersbylawoffice.com

Simple will:

\$175/person; \$330/couple

Living will/medical directive \$80

Financial power of attorney \$90

Probate: flat fee or hourly, not a percentage of estate.

Estate and tax planning.
I also assist clients in other related matters when they need my help.

Learn all about senior living at **Riderwood**

Our **FREE** brochure is packed with details about:

- On-site amenities like the all-season pool, fitness center, restaurants, and more.
- Stylish apartment homes.
- Health and wellness resources including an on-site medical center and advanced levels of care, should your health needs change.



FREE
BROCHURE!

Get your copy today.

Call **1-800-989-6177** or visit
RiderwoodCommunity.com.

Erickson LIVING
Riderwood
Add more Living to your Life®
Silver Spring
RiderwoodCommunity.com

All the Fun Ways to Use ‘Hey Siri’

by Ron Masi

Apple users have many ways to have fun while practicing using the virtual assistant, Hey Siri, on their Apple device.

Looking for something in the dark? Say, “Hey Siri, turn on the flashlight.” The flashlight turns on. Say, “Hey Siri, turn it off” to turn off the flashlight.

Misplaced or lost an Apple device? Say, “Hey Siri, find my tablet (or other device).” Users can even have Siri sound an alarm or show the misplaced item’s location on a map.

Users can also tell Siri to provide reminders, such as, “Hey Siri, remind me to pick up aspirin when I’m at the pharmacy,” or, “Hey Siri, remind me to pick up Joe at 5 p.m.”

Users can tell Siri to set or

cancel a timed alarm. Keep in mind that location-based reminders work only when the information is in Contacts.

Users who want to get back to something they are doing, such as reading a website or responding to an email, at a later time, can say, “Hey Siri, remind me of this in 10 minutes” (or other time frame).

For directions, say, “Hey Siri, give me driving directions to the grocery store.”

Users can also ask Siri for their estimated time of arrival, and can specify the type of directions they need (walking, driving, public transport, etc).

Users can have Siri set a timer. Those who like to bake, for example, or who want to take a nap but have

an appointment later and are afraid to miss it can tell Siri to set an alarm. Say, “Hey Siri, set an alarm for 12:30 p.m.,” or “Hey Siri, set an alarm or 40 minutes from now.”

Need to make yourself understood in another language? Try something like, “Hey Siri, how do I say ‘pass the salt’ in Spanish,” or “Hey Siri, how do I say ‘take me to the airport’ in Russian?” Siri responds in text and voice.

Ask Away

Practice makes perfect; here are more than enough fun questions users can ask to get comfortable talking to Siri:

- Will pigs fly?
- Tell me a joke.
- What is the meaning of life?
- What is the movie “2001: A Space Odyssey” about?
- Will you marry me?

Club Notes

The LW Apple Club is on vacation during July and August and will not have its Tuesday morning clinics or monthly meetings.

However, the Club’s website, available at (www.mac.computerctr.org/), will be maintained. The Club returns with a clinic on Tuesday, Sept. 3.

On Tuesday, Sept 24, the Club hosts its favorite Apple presenter, Aaron Davis, to talk about

the recent Apple Worldwide Developers Conference and all the recent software released by Apple.

The Club is looking for additional board members. Experience with Apple products is preferred but not necessary; Club members train one another.

If interested, contact the Club at (masiron@mac.com).



Siri icon



Reach for Wellness with Mission Medical Dispensaries

Our knowledgeable and informed staff specialize in compassionate and uniquely-tailored cannabis solutions for you. Come in today or call us at 833.768.4357 to speak with a trained cannabis consultant or visit our website for more information.

Mission Dispensaries offers:

- ▶ 15% off discount for members of the Leisure World Cannabis 101 Club
- ▶ Easy home delivery service, with deliveries on the first and last Friday of each month

Upcoming Events:

- ▶ Join Mission Dispensaries at the Cannabis & Wellness Fair July 19, 2019 from 1-4 PM at Clubhouse 1! Come learn about alternative practices and how to incorporate these into your health and wellness routine. Featuring gentle yoga and meditation demonstrations, singing bowls, aromatherapy and essential oils specialist Joyful Bath Company, Ambassadors for the US Pain Foundation, Veterans Initiative 22, and multiple physicians!



Mission Glenmont
12355 Georgia Ave
Silver Spring, MD 20906
Open daily 10am - 7 pm

Mission Hampden
3907 Falls Road
Baltimore, MD 21211
Open daily 10am - 7 pm

Mission Rockville
COMING SOON
3907 Falls Road
Baltimore, MD 21211

mission
missiondispensaries.com

Clubs, Groups & Organizations In Brief

Amateur Radio Club: Calling all hams! All resident amateur radio operators (hams)—or would-be operators—are invited to join our business meeting/lunch the second Tuesday of each month. We meet in the Stein Room in Clubhouse I at 1 p.m. For more information or to learn about amateur radio, call Bryan West at (301-598-0137).

Book Club Network: The network is a collection of book discussion groups of eight to 12 members each, providing a forum for residents to get together with other avid readers to read and discuss their favorite books. Members meet monthly to talk about a specific work chosen by their club. For further information, contact Verna Denny at (301-598-1418) or (verhd@msn.com).

Clipper Workshop: Members assemble clown hand puppets for Holy Cross Hospital. They are used in the pediatric and emergency rooms. No special skills are needed. Some sewing skills are necessary. Bring a bag lunch. (We will eat in the lunchroom.) Members meet every first and third Monday in Clubhouse II from 10 a.m.-2 p.m., or any portion of the time you can devote to making a child smile. Donations of cotton fabrics, stuffing, thread and iron-on facing are appreciated. Contact Joan Mahoney at (240-833-2724) or Jane Brinser at (301-438-2599) for further information.

Computer Learning Center: Located in Clubhouse II, the Computer Learning Center is operated by The Leisure World Computer Center Inc., a 501(c)(3) non-profit organization. The all-volunteer staff comprises a board of directors, computer room monitors and other volunteers. The center provides residents free training and assistance in the day-to-day use of computers for online research and other personal needs. The center has Mac and Window systems computers as well as color laser printers for printing and scanning. For more information about the Computer Learning Center, please visit (www.computerctr.org) or contact the E&R office in Clubhouse II at (301-598-1320).

Hispanos de Leisure World: All Hispano-Parlantes residents are invited to join the club in enjoying its activities, including card games and conversations, every Friday at 3 p.m. in Clubhouse I. Once a month, Latin-American and Hispanic movies, with English subtitles, are screened. The club organizes a Fiesta de La Amistad on a weekend in the spring and a Christmas dinner in December. The club has also presented musical shows in the Clubhouse II auditorium as well. If interested, contact Maria Blanco, club president, at (301-847-9066) or Carlota "Loty" Goldenberg at (301-598-6869).

Knitting Corner: Join us the second and fourth Fridays of each

month at The Inter-Faith Chapel from 10 a.m.-noon. Our next meeting is July 12. Bring your knitting and enjoy the conversations. We have patterns and yarn for the Chapel's mission. Yarn donations gratefully accepted. Call Joan at (240-833-2724) if you have any questions.

The Lapidary Shop: Our well-equipped Lapidary Shop is available to all residents who join the Lapidary Club and take training on use of the shop's equipment. Shop steward Mark Parker oversees training and is usually in the shop on Monday afternoons after 2 p.m. To arrange for training, contact Mark at (240-723-5860), or drop by the shop in Clubhouse II on a Monday afternoon to talk to Mark and see the shop. For those who have received training, the shop is available whenever the Clubhouse II E&R office is open. Get trained and make cabochons. Get involved and make friends.

LW LGBTQ Alliance: Our group was formed to give members of the LGBTQ community a safe and inviting place to come and meet new friends and to get involved in social activities. Our meetings are the third Saturday of every month at noon in Clubhouse II. We welcome everyone; being gay is not a prerequisite. The LW LGBTQ Alliance strives to provide events and activities to develop strong relationships through education, interaction and fun within our group and with the entire Leisure World community. For additional information and events, email us at (lwlgbt@gmail.com).

Musical Jammers: We gather informally once a month with other amateur musicians, singers and lovers of music to sing, play music and have fun – no dues, no meetings, no agendas, no committees. We meet on the second and fourth Mondays of every month at 10 a.m. in Clubhouse II. All instruments and voices are welcome. You bring it; we'll sing it. Questions? Call Richard Lederman at (301-598-1132).

Nextdoor.com: A friendly place online to share tips and meet neighbors. We already have a record of success helping make Leisure World even better. Free. Please join our 1,200 plus members. Go to (www.nextdoor.com/join) and enter the code QHMXCF.

The Philadelphians: For further information about the Philadelphians and their events, contact Steve Kane at (301-598-2330) or (kanens@verizon.net).

The Pittsburghers: If you were born, raised or lived in Pittsburgh and/or the Greater Pittsburgh area, you are welcome to join us. For more information, call Tania Iwanowski at (301-598-2278) or email (Tania.Iwanowski@yahoo.com).

(continued on page 38)

WHAT MAKES US DIFFERENT...



- Your comfort is a top priority. We provide **GENTLE CARE** in a **RELAXING ENVIRONMENT** with **ADVANCED TECHNOLOGY**.
- We give courage and confidence to the most fearful by offering a **COMFORT MENU** of features such as an aromatherapy neckwrap, warm blankets, headphones, and Netflix.
- We offer our patients flexible payment options including **FINANCING** and our Smile Club **DENTAL SAVINGS PLAN**.

★★★★★ - ROSITA U.

"I am a 61-year-old woman who is deathly afraid of the dentist. I went to this office to get a tooth extracted. Dr. Joshi was wonderful. I had absolutely **NO PAIN**. She is kind and caring and the **BEST DENTIST I HAVE EVER BEEN TO**. You can only give 5 stars, or I would give her **10 PLUS STARS**."



LIMITED TIME NEW PATIENT SPECIAL!

Comprehensive Exam, X-rays & Cleaning **ONLY \$130**

Value of \$338. Expires 7/31/19.

Call today to **SCHEDULE YOUR APPOINTMENT.**

301-368-6112

New Smiles Warmly Welcome!

17902 Georgia Ave., Ste. 200 | OlneyDentalCenter.com



Kitchen & Bath Remodeling

301-598-8400

SERVING LEISURE WORLD SINCE 1988

July SPECIAL- free bathroom vanity top & faucet with any Tub to Shower Conversion.

Price match guarantee on all projects.



MHIC# 36674



Clubs, Groups & Organizations In Brief (cont.'d)

Quilting Group: Come and join our fun group as we work on our individual projects. We now include those interested in all needle-work and knitting. We meet the second and fourth Thursdays in the Clubhouse II multipurpose room at 9:30 a.m. If you have any questions, call Clydis Kellough at (301-642-2430). Our next meeting is July 11.

Stitchers Group: Needlepoint, cross-stitch and more. If you enjoy stitching or would like to learn, we meet every first and third Thursday from 10 a.m.-noon in the Clubhouse II Multipurpose Room. Come and share your finished work and enjoy stitching with us while we learn new skills together. Call Audrey at (301-598-4903).

Short Story Group: The Group reads from a collection of short stories and discusses them together. The Group is now reading from the anthology "The O. Henry Prize Stories 2018," which contains 20 award-winning stories by various authors. On Wednesday, July 17, Sarah Hirschfeld will lead a discussion of "Solstice" by Anne Enright. On Wednesday, Aug. 7, Sami Demiray will lead a discussion of "Deaf and Blind" by Lara Vapnyar. (We had to skip this story last winter because of the weather.) The Short Story Group meets on the first and third Wednesdays of the month at 11 a.m. in Clubhouse I. For information, call Beth Leanza at (301-598-4569).

Stamp and Coin Club: Are you a philatelist or a numismatic? Join the Stamp and Coin Club. We meet on the first Thursday of each month at 3 p.m. in Clubhouse I. Members discuss their collections, including first day covers, day of issue programs, yearbooks, coins, medals and more. Stamps are shared for "show-and-tell," and we hold an auction of members' stamps. A gift certificate is awarded as a door prize at each meeting. All residents and non-residents are welcome to attend. Annual dues are \$5. If interested, contact Rita Mastrorocco at (301-814-9196).

Town Meeting Organization: TMO is a movement of residents concerned about governance and management. We meet every month to organize, discuss and conduct resident town hall meetings. Topics

such as the proposed administration building, community governance, management and its involvement in mutual elections, and funding a strategic plan will be addressed. TMO meets the third Friday of each month at 2 p.m. in the Clubhouse I. All residents are invited to attend and become active in the movement. For information email (admin@townmeetingorganization.com) or visit (www.townmeetingorganization.com).

Wood Shop Users Group: The wood shop is located on the lower level of Clubhouse I; the entrance to the shop is off Gleneagles Drive. It is open Monday through Friday, 9 a.m.-3 p.m. and Saturday 9 a.m.-noon. An experienced monitor is on duty when the shop is open to assist members with their work and provide instructions in the use of shop equipment. Members are often willing to repair and refinish projects for Leisure World residents. For further information, call (301-598-1308).

Women in the Military: Are you a female who has served in the armed forces? Join us as we shine a light on the role that women play in serving our country. We also strive to promote awareness of the Women's Memorial at Arlington National Cemetery. We meet every second Wednesday of the month at 10 a.m. in the Terrace Room. Call Barbara Long at (301-438-3427) for more information.

Women's Fun Bunch of Leisure World: The Women's Fun Bunch is for widows living in Leisure World. We have a good time together and plan for more adventures as the weather improves. For inquiries, call Marlene at (301-438-7773).

Yahoo Group: The Group is an online forum and email list serve that provides informal, online communication between neighbors. It provides residents an opportunity to seek information, post announcements and share photos and files. This list serve is monitored daily to assure the stated Group rules are followed. To join, visit (<https://groups.yahoo.com/neo>).



Now Open

701 King Farm Boulevard, Rockville, MD 20850
240-398-3846 | www.ikfmd.org

INGLESIDE AT KING FARM IS A NOT-FOR-PROFIT, CARF ACCREDITED, SAGECare CERTIFIED, LIFE PLAN COMMUNITY.

INGLESIDE
AT KING FARM
ENGAGED LIVING
An Ingleside Community

Icons: SAGECare, CARF, Life Plan Community, and a wheelchair symbol.

EXPERIENCE A NEW APPROACH TO **Memory Support**

Ingleside at King Farm has added even more choices to our engaged living community, and now offers the area's newest *Memory Support Assisted Living*. Through an innovative person-directed approach that emphasizes each person's abilities, we celebrate life through diversity and engagement in a place where character and compassion coexist. Brand new residences are now available for immediate occupancy in *Memory Support*.

For over a decade, *Ingleside at King Farm* has provided exceptional living in a community with an unmistakable sense of well-being.

Be one of the first to tour this exceptional addition, and call 240-398-3846 today!

INDEPENDENT LIVING | ASSISTED LIVING | MEMORY SUPPORT | LONG-TERM CARE | REHABILITATION | SOCIAL DAY PROGRAM | HOME CARE

Leisure World Club Trips

The next deadline for trip submissions is **Monday, July 8**. The trips listed below are sponsored by Leisure World groups and organizations and not by Eyre Leisure World Travel. These trips are **open to all residents**, not only members of the specific club. For information, contact the person listed with each trip. (Do not contact the Eyre Leisure World Travel or E&R office.) Leisure World clubs and organizations that want to be included in this column must provide a submission to the News by 3 p.m. on the Monday deadline. Due to space limitations, the Leisure World News reserves the right to edit or delete submissions. Email your trip information to lwnews@lwmc.com.

Please Note: Member/Non-Member pricing is at the discretion of the individual clubs.

July
30

Nationals Baseball Game Washington, DC

Join the **Jewish Residents of Leisure World** on an evening bus trip to see the Washington Nationals play the Atlanta Braves at a home game on Tuesday, July 30.

The cost is \$45 per person and includes bus transportation and ticket to the game.

The bus departs Clubhouse II at 5 p.m. and ticket holders will disembark by an elevator that will drop them off near reserved seating. Seating overlooks the first base line, is under cover and close to restrooms and food concessions.

To reserve seats, send a check (payable to JRLW) to Dottie Chanil at (3829 Glen Eagles Dr., Silver Spring, MD 20906). Or, call Dottie at (301-871-1513) for more information. Tickets will be distributed as participants board the bus.

Aug.
22

Harris Crab House and Amish Market Grasonville, MD

Join the **Going It Alone Club** for an all-you-can-eat feast of crabs, steamed shrimp, fried chicken, corn-on-the-cob, cole slaw, potato salad, desert, coffee, tea, soda and draft beer at Harris Crab House in Grasonville, Maryland.

On the return trip home, we will stop at the Amish Market in Annapolis, Maryland, for some shopping. The cost is \$83 for members, \$93 for non-members, and includes transportation, taxes, dining and driver gratuity. The bus departs Clubhouse II at 10:30 a.m. and returns at approximately 5:30 p.m. No refund will be made after July 20 unless a replacement is made.

Sign up at Saturday Afternoon Live (SAL) in Clubhouse II from 1:30-3 p.m. For more information, call Joe Parker at (301-5988-3457) or Sylvia Pachenker at (301-598-5325).

Aug.
31

National Book Festival Washington, D.C.

Join the **Book Club Network** on a trip to the National Book Festival at the DC Convention Center in Washington, D.C. on Saturday, Aug. 31, Labor Day weekend.

This annual event, sponsored by The Library of Congress, brings the nation's top authors together to discuss their work. Supreme Court Justice Ruth Bader Ginsburg will be a featured guest discussing her book, "My Own Words." One hundred fifty other writers will be giving presentations including David McCullough, Barbara Kingsolver, Sara Paretsky and Henry Louis Gates Jr.

The bus departs Clubhouse II at 9 a.m. and returns to Leisure World at 4 p.m. The cost is \$35 a person for transportation only. Lunch is on your own. Tickets can be purchased from the Eyre Office in Clubhouse I or by calling (800-321-3973, Option 4). For more information, contact Verna Denny at (verhd@msn.com) or (301-598-1418).

Sept.
14

NEW - Capitol Steps, Washington, D.C.

NA'AMAT RBZ Club has planned a great trip on Saturday, Sept. 14, to see a 7:30 p.m. performance of the Capitol Steps. Join us for an evening of music and political satire at the Reagan Building.

The cost is \$75 per person and includes transportation and the show.

The bus departs Clubhouse II at 6 p.m. and will return at 10:30 p.m.

Send your check, payable to NA'AMAT, to Esther Goldstein at (15000 Pennfield Circle, #302, Silver Spring, MD 20906). For questions call Esther at (301-847-9215).

Sept.
16-20

Pigeon Forge and Smoky Mountains Shows, TN

All residents are invited to come with the **Going It Alone Club** on a five-day, four-night trip to Pigeon Forge and the Great Smoky Mountains of Tennessee.

The trip includes four breakfasts and four dinners, entrance to the Titanic Museum, five shows, free time in historic downtown Gatlinburg and a guided tour of the Great Smoky Mountains National Park.

The bus departs Clubhouse II at 8 a.m. on Monday, Sept. 16 and returns late afternoon on Friday, Sept. 20

The cost for double occupancy is \$480 per person for Club members; \$488 for non-members; and \$149 additional for single occupancy. A \$200 deposit is due upon sign-up, with the final payment due by Tuesday, July 9. Travel insurance is available.

Sign up at Saturday Afternoon Live (SAL) from 1:30-3 p.m. in Clubhouse II; wait list only. No refunds will be made unless a replacement is made. For more information, call Joe Parker at (301-598-3457) or Sylvia Pachenker at (301-598-5325).

Nov.

11-13

Gaming and Sightseeing Atlantic City, NJ

Join the **Tennis Club** on a two-night/three-day trip (Monday-Wednesday) to Atlantic City, New Jersey. For only \$205 per person double occupancy (\$90 more for single occupancy), you will get transportation in a modern bus, two nights lodging in the casino hotel, one dinner, two hot breakfasts and a casino bonus.

On your own in this tourist location, you can take in a show and enjoy Atlantic City's famous boardwalk.

Contact Sue Sandler at (240-242-3742) for more information and to make a reservation.

Attention, Travelers!

All Leisure World travelers please note that no group on travel can park more than 12 vehicles overnight/long-term in the Clubhouse II parking lot. Also, parking overnight/long-term is at the owner's own risk.

EYRE Leisure World Travel

Travel & Tour Department • (301) 598-1599 • Tuesday, Wednesday & Thursday 8:30 am-2 pm
Reservations can be made Monday through Friday, 8:30 am-5 pm by calling 301-854-6600 #4
For more detailed itineraries, please see the Eyre Representative at the Eyre Leisure World Travel Office.

DAY TRIPS

Museum Loop, DC

Mon., 8/5, 8:40 am-3:00 pm \$35.00 per person

Spend the day at the National Museum of the American Indian, American History Museum or Natural History Museum (New Fossil Hall). Transportation only.

Museum of the Bible, DC

Fri., 8/16, 9:05 am-3:00 pm \$60.00 per person

Admission to the museum and show tickets included.

Crabfeast on the Choptank River Queen, MD

Fri., 8/16, 8:45 am -7:15 pm \$109.00 per person

Enjoy a three-hour cruise on the Choptank River while picking crabs. Eat fried chicken and other delicious foods! Transportation, cruise and food included.

Tony Bennett at Wolf Trap, VA

Sat., 8/17, 5:15 pm-11:15 pm \$145.00 per person

Garnering 19 Grammy Awards over a seven-decade career interpreting the Great American Songbook, "Bennett vocalizes American popular songs like nobody else can." Transportation and admission included.

US Tennis Open, NY

Fri., 8/30, 5:30 am-11:55 pm \$169.00 per person

'Love' tennis? Then this is the trip for you! Ground pass to all stadiums except Arthur Ashe included as well as transportation.

Library of Congress National Book Festival, DC

Sat., 8/31, 9:00 am-4:00 pm \$35.00 per person

Held at the Walter E. Washington Convention Center. Transportation only. *Expect enhanced safety and security measures when entering the Convention Center.*

Soar, Sip and Savor, Kent Island, MD

Sat. 9/7, 7:45 am-6:00 pm \$126.00 per person

The trip begins at Massey Air Museum, to view its collection of vintage working aircraft, and then to Crow Vineyard, a farm and vineyard to see the wine-making process and then a farm-to-table lunch at Crow's Haybarn. There will be time at the gift shop, too. Last stop is in historic Galena, Maryland, with time to browse the antique shops and to get a scoop or two of ice cream. Trip includes transportation, admission to the air museum and lunch.

Glenstone Museum, Potomac, MD

Thu., 9/12, 10:15 am-4:00 pm \$40.00 per person

Enjoy your day inside and outside at this unique museum! Transportation only.

DC Wharf

Mon., 9/16, 8:45 am-3:15 pm \$39.00 per person

Explore the DC Wharf! Shops, museums and more! Transportation only.

"Jesus" at Sight & Sound Theatres, PA

Sat., 9/21, 9:45 am-9:15 pm \$159.00 per person

Lunch at Hershey Farm Restaurant.

Maryland Wine Festival, Carroll County, MD

Sat., 9/21, 9:45 am-4:30 pm \$69.00 per person

Bring your taste buds! Enjoy the Maryland Wine Festival at the Carroll County Farm Museum complex. Transportation and admission to the festival included.

Sunfest at the Inlet, Ocean City, MD

Sat., 9/21, 7:45 am-9:00 pm \$60.00 per person

Held at the Ocean City Inlet, this event is enjoyed by the whole family with arts and crafts vendors, a variety of delicious food including Eastern Shore favorites. Enjoy nationally known entertainers all day. All the entertainment is free with the exception of the headline acts. Transportation only.

Western Maryland Scenic Railroad

Sat., 10/19, 8:00 am-6:45 pm \$129.00 per person

Three hour rail excursion from Cumberland to Frostburg. Lunch included.

Museum Loop, DC

Thur., 10/3, 8:40 am-3:00 pm \$35.00 per person

Choose to spend the day at the Holocaust Museum, National History Museum or the National Gallery of Art.

9/11 Memorial & Museum, NY

Sat., 10/12, 7:00 am-11:45 pm \$120.00 per person

\$10 Cracker Barrel Gift Card included.

Spotlight On...

NEW International Horse Show, DC

Thu., 10/24, 5:10 -11:00 pm \$85.00 per person

With more than 500 different types of horses and all sorts of great equestrian events, the annual Washington International Horse Show is one of the best events of its kind in the world. Thousands of enthusiasts show up to the Capital One Arena every October to see something amazing. It won't take long to get hooked on the tradition of the Washington International Horse Show, which continues to boast a stunning display of equestrian heraldry that will leave you wanting more. Trip includes transportation and admission.

MULTI-DAY TRIPS

Castles of NY-1000 Islands

Aug. 26-29

Finger Lakes, NY

Sept. 22-25

Hudson Valley, NY

Sept. 25-27

Albuquerque Balloon Fiesta

Oct. 4-9 (fly/drive)

Ocean City Getaway, MD

Oct. 15-18

The Wright Experience

at Fallingwater, PA

Oct. 22-24

A Victorian Holiday, Cape

May, NJ

Dec. 1-3

Greenbrier, WV

Dec. 8-10

Country Christmas at the

Gaylord Hotel in Nashville, TN

Dec. 10-13

CRUISES

Royal Caribbean

Oct. 31-Nov. 8

Eight-night Southeast Coast
and Perfect Day Cruise

Anthem of the Seas, Cape

Liberty, NJ

Dec. 8-10

Caribbean Cruise

We can book any cruise line anywhere you want to cruise.

(All Trips depart from Clubhouse II)

Some trips require a certain amount of walking. The shoe symbol  provides an indication of how much walking may be involved.

Key:



Easy Walking



More Walking



A Lot of Walking

Eyre at Leisure World Travel Office, located in Clubhouse I, is a department of Eyre Bus, Tour & Travel. We offer a full service travel agency that specializes in airline reservations, cruises, group tours, vacation packages, hotel accommodations and auto rental. We have been providing "Excellence in Travel for 70 Years".

INCLEMENT WEATHER POLICY: Please call 301-598-1599 after 7 am on the day of a trip to find out if we have cancelled, postponed or are going. If a trip is cancelled, you will also receive a phone call from us once the office is open.



Assisted Living Open House

Thursday, July 25 | 10:00 a.m.–11:30 a.m

- Meet our residents and tour their beautiful homes
- Visit and see how our residents live with purpose every day
- Meet our compassionate team that provide care to our residents
- We are proud to be Deficiency Free on state surveys for the past 2 years!

Select studio and one bedroom suites now available.

Call 301-438-6607 by July 20th to RSVP or to set up your personal appointment.



Bedford Court
3701 International Drive
Silver Spring, MD 20906
BedfordCourtSeniorLiving.com



**BEDFORD
COURT**

MONOGRAM COLLECTION BY SUNRISE



© 2018 Sunrise Senior Living

SPORTS, GAMES & Scoreboards

■ 10-Pin Bowling League

Team 'Winners' Lives Up to Its Name

by Rita Mastrorocco

The league is based on handicaps with averages for the bowlers ranging from 92 to 177. If you have not bowled in years, come out and join the fun.

The top league standings as of June 21, 2019 are the Winners in first place, the Huggers in second place and the Optimist in third place.

Top scores for the week of June 14 are:

Scratch Game – Half and Half, 607 pins
Scratch Series – Half and Half, 1,770 pins
Handicap Game – Rolling Rocks, 919 pins
Handicap Series – Rolling Rocks, 2,648 pins
High Average Men – Bill Thomas, 166 pins
Scratch Game Men – Larry Lull, 191 pins
Scratch Series Men – George Kessler, 500 pins
Handicap Game Men – Larry Lull, 255 pins
Handicap Series Men – George Spangler, 694 pins
High Average Women – Chris Porter, 178 pins
Scratch Game Women – Chris Porter, 197 pins
Scratch Series Women – Chris Porter, 561 pins

Handicap Game Women – Bea Morrissey, 258 pins
Handicap Series Women – Myra Gallin, 698 pins

Top scores for the week of June 21 are:

Scratch Game – Winners, 665 pins
Scratch Series – Winners, 1,863 pins
Handicap Game – Winners, 958 pins
Handicap Series – Winners, 2,742 pins
High Average Men – Bill Thomas, 168 pins
Scratch Game Men – Arnie Lerman, 199 pins
Scratch Series Men – Bill Thomas, 533 pins
Handicap Game Men – Arnie Lerman, 262 pins
Handicap Series Men – Arnie Lerman and Larry Lull, 687 pins
High Average Women – Chris Porter, 177 pins
Scratch Game Women – Jessica Stephens, 213 pins
Scratch Series Women – Jessica Stephens, 577 pins
Handicap Game Women – Jessica Stephens, 279 pins
Handicap Series Women – Jessica Stephens, 775 pins

You do not need to be a good bowler to join. Come and join us for fellowship, fun and

easy exercise. There is no long-term commitment.

The league bowls every Friday with practice starting at 9:50 a.m. at Bowl America in Gaithers-



burg. The cost for the three games of bowling, the use of bowling shoes and balls and unlimited cups of coffee is only \$10. If interested in joining, call Rita at (301-814-9196).

■ Golf Club

June Results

Compiled by Rita Molyneaux

they did not finish in the top five in the two best ball event.

June 11, 2019 9-Hole Ladies Home to Home Argyle, Norbeck and Laytonsville

1. Brenda Curtis-Heiken, Jill Katz, Linda Andrews, Elsa Dreyfus, 36
- 2.* Connie Park, Shirley James, Muriel Peake, Nickie Lopes, 42
- 3.* Lois Falck, Pat Weingart, Janet Danziger, Nancy Cioffari, 42
- 4.* Clara Brincefield, Young Sook Lee, Ruth Cougnet, Marion Hastings, 43

*Ties broken by hardest handicap hole.

June 18, 2019 Tee to Green Tournament

1. Lois Kutun, 7
2. Mary Lee Amato, 11
3. Barbara Rushing, 12
4. (tie) Linda Andrews, Mary Wells and Janet Danziger, 15
7. (tie) Susan Newman and Nickie Lopes, 16

June 19, 2019 MISGA at Holly Hills Country Club

Three players from Leisure World played in the MISGA Mixer at the Holly Hills Country Club in Ijamsville, Maryland. The Club features one of the most difficult golf holes in the East: the Presidents Loop number 16. This hole was made famous by the Bush family's visit in the '90s.

A field of 75 players represented six member clubs. Competition was keen and although the Leisure World players contributed well to their teams,

June 19, 2019 MISGA Division IV Past President's Qualifier at Montgomery Country Club

Leisure World fielded seven players in a field of 60 players representing the eight clubs in MISGA Division IV.

This is a highly competitive tournament for the Division Championship title and trophy, and to qualify to play in the MISGA Statewide Tournament, where Leisure World players performed above and beyond.

Barry Falgout won second low gross in his flight; Joe Powell won second low net in his flight and Kevin McMahon won third low net in his flight.

These three Leisure World players qualified to represent Division IV in the MISGA Statewide Tournament at Norbeck on Thursday, Aug. 1.

June 20, 2019 18-Hole Ladies Blind Draw Tournament

1. Christa Storm, Mary Lee Amato, 59



Photo by Leisure World News

■ Tennis Club

July 11: Tennis Club Meeting and Social

The Tennis Club next meets on Thursday, July 11, and will not meet on Thursday, July 4, so as not to conflict with Independence Day activities.

The meeting is at 7 p.m. in Clubhouse II. Come early for the ice cream social held before the meeting begins.

Monday "Hit Around" is from 5:30-7 p.m. on the tennis courts. Come and have some fun. Round robin play takes place on Tuesdays and Friday from 9:30-11 a.m., and advance play is on Sundays, Wednesdays and Thursdays from 9:30-11 a.m.

– Alfonso Holston



Photo by Leisure World News

Doctors in Cuba Likely to Learn Chess

by Bernie Ascher

Cuba recruits doctors to serve in other countries. These are the incentives:

- free, six-year medical school
- higher than average wages
- additional wages serving in other countries
- opportunity to serve in a prestigious and respected international program
- opportunity to have interesting experiences while contributing to Cuba's international humanitarian efforts
- opportunity to live independently and work in foreign countries without family members

These incentives sound highly beneficial considering that the cost of medical school is very expensive (\$52,500 per year or higher at a private, non-profit, four-year U.S. college, according to the College Board).

Thus, Cuba is able to attract thousands of medical students from other countries. Last year in Cuba's graduating class of about 10,000, some 45 percent consisted of students from 86 countries, including Americans.

Following a raise in 2015, the highest doctors' wages in

Cuba are about \$67 per month, compared to average wages of government workers, ranging from \$26-\$31 per month. Some doctors supplement their income by working as tour guides or cab drivers, or by renting rooms to tourists.

Doctors must share with the government the additional wages earned in Cuba's international medical program, the government taking about 75 percent. Doctors have become Cuba's largest export, earning the country roughly \$8 billion a year, more than tourism.

Under the program, some 50,000 Cuban doctors serve in more than 60 countries. The program has earned respect, good will and good relations with other countries, along with needed foreign exchange and commodities. For the doctors sent to Venezuela, for example, Cuba receives 92,000 barrels of oil a day, valued around \$3.2 billion a year, according to Fox News.

The low "additional" wages paid to doctors came under fire last November when Brazil's President-elect Jair Bolsonaro criticized the Cubans as "slave doctors." He proposed that doctors receive the full salary paid by Brazil and that they be allowed to bring their families with them.

Cuba then ended the Brazilian program, withdrawing thousands of doctors who worked mostly in rural areas, and reassigning many of them to Venezuela. At one time, Brazil had as many as 20,000 Cuban doctors, Venezuela, 30,000.

Outside of Cuba, doctors gain morally rewarding experiences, serving in rural communities and dealing with natural disasters (Haiti's 2010 earthquake) and health crises (West Africa's 2014 Ebola crisis), often with inadequate medicines and medical equipment and other hardships.

Following the devastation of Hurricane Katrina in 2005, Cuba prepared to send 1,500 doctors to New Orleans, but the U.S. rejected the offer.

Cuba's program originated in 1963 when it sent its first medical mission to Algeria, with 56 Cubans replacing French doctors who left after the African country gained its independence from France.

In 2006, the Bush Administration established a program called the Cuban Medical Professional Parole (CMPP) to encourage Cuban doctors sent abroad to defect to the U.S. Over the course of the CMPP, which ended in January 2017, more than 7,000 Cuban doctors moved to the U.S.



Because chess classes are mandatory in the Cuban education system, doctors can play chess. However, they are hired for other reasons. In the diagram on this page, White can mate in two moves. Do you see it?

The solution follows the usual message that the Chess Club meets on Monday, Wednesday, and Friday from 1-4 p.m. in Clubhouse II. Membership is free. For further information, contact Bernie Ascher at (301-598-8577).

SOLUTION: White moves the Knight to e7, checking the King. The King moves to h8, its only move. White then moves the Queen to f6. Checkmate!

So, do not wait for a Cuban doctor. Do not wait for a foreign assignment. Do not wait for admission to medical school. Play chess now!

Golf Course Offers One-Time-Only Membership Rate

The golf course is now offering a one-time-only reduced membership rate of \$500 for residents, their family members and friends.

The reduced rate includes annual greens fees and unlimited play and is good through Tuesday, Dec. 31, 2019.

Come out for the easy exercise and camaraderie that golf has to offer! For details or to join, stop by the Pro Shop or call (301-598-1570).

– Leisure World News



Photo by Leisure World News

'ARIA' CONFUSED ABOUT LAST EDITION'S CHESSBOARD?

Due to a layout error, the solution to the game in the June 21 edition of Leisure World News did not match the chessboard that was pictured.

The correct diagram (see below right) shows the position of the chess pieces from a world famous game played by American chess master Paul Morphy in the Italian Opera House in Paris, France, in 1858. From here, Morphy won the game in two moves. Do you see it?

SOLUTION: Morphy moves the White Queen to b8, checking the King. Black's Knight captures the Queen. Morphy moves the Rook to d8. Checkmate!

– Leisure World News



Wednesday Night Chicago Bridge

Compiled by Abigail Murton

June 12, 2019

1. Abigail Murton and Doug Brasse, 6,480
2. Joyce Riseberg and Dick Riseberg, 6,060
3. Betty Hecht and Dottie Hurley, 3,680

June 19, 2019

1. Dottie Hurley and Dottie Donnelly, 2,750
2. Linda Mihm and Norman Salenger, 2,080

Thursday Afternoon Ladies Bridge

Compiled by JoAnn Gellman

June 13, 2019

1. Vicky Shaz, 3,010
2. Shirley Gilmore, 2,830
3. Henny Stern, 2,620

June 21, 2019

1. Shirley Gilmore, 3,170
2. Evelyn Armstrong, 3,070
3. Sally McGowan, 3,000

Friday Bridge

Compiled by Shirley Rosenhaft

June 7, 2019

1. Betty Hecht, 2,940
2. Mort Faber, 2,820
3. Sunny Levin, 2,340
4. John Hashim, 2,190

June 14, 2019

1. Betty Hecht, 4,370
2. Mort Faber, 3,970
3. Sunny Levin, 3,720
4. Janet Danziger, 2,380

Leisure World®
 55+ "Resort" Community
 "Country Club Feel"
 "Authorized Leisure World® Specialist"

55Places.com

Top 10 Best Value Communities

#1 Leisure World, MD

Since 2017 Results

Sold: 39+ Listings: 27+ Rentals: 4

Checkout my Zillow 5 Star Ratings at
dougbrasse.com

Please put my Winning Strategies to work for You, and Your Friends, Neighbors or Relatives

Douglas Brasse Cell: (301) 448-8708 dbrasse@weichert.com
 Office Phone :301-681-0550 dougbrasse.com
 Aspen Hill/ Leisure World Plaza
 3816 International Drive
 Silver Spring, MD 20906

Leisure World® is a registered trademark owned by RRLH, Inc.
 Doug Brasse is authorized by RRLH, Inc. under license to use the Leisure World® service trademark

PEDESTRIAN SAFETY DURING SUMMER

Pedestrians are reminded to:

- Wear brightly colored clothing when walking before dawn and after dusk.
- Always carry a form of identification that includes your name, address, any medical condition and the name of a person to contact in case of an emergency.
- Be particularly attentive of vehicular traffic when crossing at all intersections and crosswalks.

Tuesday and Friday Duplicate Bridge

Compiled by Jerry Miller

Tuesday, June 11, 2019

**North-South
Flight A**

1. Hanna Schepps – Marlys Moholt
2. Alfred Caponiti – John Ryan
3. Allen Shaw – Patti Anschutz
4. Robert Catlett – Saul Penn
5. Diane Keiper – Mel Schloss

Flight B

1. Marilyn Rubinstein – Stanley Rosen
2. Stephan Billstein – Marcia Fletcher

**East-West
Flight A**

1. Barry Tash – Howard Tash
2. Jerry Miller – Gerald Lerner
3. Rosmarie Sutor – Shirley Light
4. Stephen Weiner – James Summers Jr
5. Leanna Gipson – Micheal Kravitz

Flight B

2. Rosmarie Sutor – Shirley Light
3. Stephen Weiner – James Summers Jr
4. Leanna Gipson – Micheal Kravitz

Flight C

1. Leanna Gipson – Micheal Kravitz

Friday, June 14, 2019

**North-South
Flight A**

1. Allen Shaw – Patti Anschutz
2. Shirley Light – Bernice Felix
3. Stephan Billstein – James Cowie
4. Diane Keiper – Mel Schloss

Flight B

1. Stephan Billstein – James Cowie

**East-West
Flight A**

1. Abigail Murton – Doug Brasse
2. Dora Levin – Mark Lavine
3. Susan Weiss – Sue Swift
4. Norman Salenger – Linda Mihm

Flight B

2. Susan Weiss – Sue Swift

Flight C

2. Nancy Gordon – Joan Marie Thomas

Tuesday, June 18, 2019

**North-South
Flight A**

1. Allen Shaw – Patti Anschutz
2. Wendy Morrison – Vern Skinner
3. Aaron Navarro – Marlys Moholt
4. Mel Schloss – Alice Miller

Flight B

1. Wendy Morrison – Vern Skinner

**East-West
Flight A**

1. Robert Kerr – Lorraine Hegel
2. Madhav Deshmukh – Beena Deshmukh
3. Saul Penn – Robert Catlett
4. Abigail Murton – Dora Levin

Flight B

1. Madhav Deshmukh – Beena Deshmukh
2. Abigail Murton – Dora Levin

Flight C

1. Abigail Murton – Dora Levin

Friday, June 21, 2019

**One section only
Flight A**

1. Aaron Navarro – Allen Shaw
2. Nancy Gordon – Sue Swift
3. Diane Keiper – Mel Schloss
4. (tie) Norman Salenger – Linda Mihm
- (tie) Patricia Williams – Charles Williams

Flight B

1. Nancy Gordon – Sue Swift
2. Norman Salenger – Linda Mihm

Duplicate Games are played on Tuesdays and Fridays at 7 p.m. in Clubhouse I. Results and hand records are available on (thecommongame.com). Players who need a partner for either the Tuesday or Friday game are asked to call Shirley Light at (301-598-6611) at least 24 hours in advance.

Sports, Games & Scoreboards In Brief

Bid Whist: Do you know what Sport the Kitty, Boston Time and Rise and Fly all mean? If you like to play Bid Whist, then meet us on Mondays at 6 p.m. in the Clubhouse II Multi-purpose Room. Questions: Call Jessie at (314-374-4501).

Bocce: Games are played on the first and second Fridays of the month at 10 a.m. at the bocce court, located outside the Clubhouse I Terrace Room restaurant. The game is easy to learn, with no special skills required. There is no sign up; just show up (weather-permitting).

Bridge:

• **Tuesday and Friday Duplicate Bridge** games are at 7 p.m. in Clubhouse I. New players with partners are welcome. Hand records and results are available after the game on (thecommongame.com). Results are also posted on (cuebid.com). If in need of a partner, call Shirley Light at (301-598-6611) at least 24 hours before the game. Questions? Call Aaron at (301-598-3870).

• The **Wednesday Night Chicago Bridge Group** is looking for new members. The group meets every Wednesday in Clubhouse I. Play begins promptly at 6:45 p.m. Bring a partner and be ready for a few hours of friendly games. Questions? Call Doug at (301-448-8708).

• **Men's Bridge** seeks players. We meet Mondays and Thursdays at 12:30 p.m. in Clubhouse II. No partner needed. Women welcome. Call Alan Levine at (301-288-7349).

• **Thursday Ladies Bridge** welcomes more card players. If interested, call Jackie Harrell at (301-598-4341).

Chess: Free chess lessons on Mondays for beginners or "rusty" players. Call Steve Harvith at (301-801-4693) or Lark Keller at (301-219-5955) for appointments. The Chess Club meets every Monday, Wednesday and Friday from 1-4 p.m. in Clubhouse II. Membership is free.

Cribbage: We meet for 150 minutes of competitive fellowship on Thursdays at 9:30 a.m. in Clubhouse II. We have cards and cribbage boards, and would be pleased to teach you the game. It is a mixture of rummy and pinochle and is pure fun. (We do not even keep score.) For more information, call George at (301-598-9747) or Bill at (301-598-7270). We look forward to seeing you.

Duckpin Bowling: Join us for the Duckpin Mixed Bowling League Mondays at 12:30 p.m. at White Oak Bowling Lanes (11207 New Hampshire Ave., Silver Spring). We need bowlers of all skill levels and will welcome you into our enthusiastic group. We carpool regularly, so non-drivers need not stay away. Call Lisa Zarou at (301-814-0029) or Flora Wolf at (301-598-5807) to join as a substitute or regular bowler.

Jigsaw Puzzle: There is a jigsaw puzzle table in the Clubhouse II lobby. Feel free to work on it at your leisure.

Mah-jongg: Learn how to play mah-jongg. Call (301-598-3438).

Mind-Body Exercise Club: Members meet every Thursday afternoon from 2-3 p.m. in the Clubhouse II Activity Room to study and practice mind-body exercises under a leader. Interested Leisure World residents can join the club by paying a \$5 per person initiation fee. If you have any questions, call Judy Menkes at (301-847-9643).

Ping-Pong Club: Get healthy exercise and camaraderie playing ping-pong. The club meets Mondays from 3-5 p.m. and Wednesdays and Fridays from 1-3 p.m., in the Clubhouse II Ping-Pong and Meeting Room. Drop in anytime during that period. Some experience preferred. Questions? Call Julie at (301-598-5424) or email at (julie12401@netscape.net).

Pinochle Players: Experienced pinochle players wanted. We play Mondays from 6:30-8:30 p.m. in Clubhouse II. If interested, call (301-775-7238) or (301-598-7064). If you are interested in learning, you are welcome to observe.

Poker:

• **Poker Game** openings are available at the Greens, Thursdays from 7-10 p.m. No prior experience necessary. If interested, call Marcel at (240-486-6205).

• **Men's Poker** is seeking new members. Play is daily, beginning around 9 a.m. in the Game Room in Clubhouse II.

• **Play Poker** Mondays and Thursdays from 1 p.m.-4:30 p.m. in the Clubhouse II Game Room. We play hi/low only (two winners). Call (301-598-4331) or (301-434-6823), or come observe.

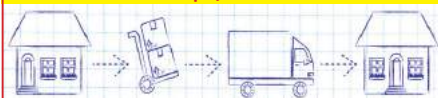
Thursday Night Poker meets from 6-9 p.m. in Clubhouse II. We play hi/lo, with or without wild cards, dealer's choice. All are welcome. Leisure World residents preferred. Call Dave at (301-598-7064) for information, or just come and join us.

Scrabble: Please join us at Clubhouse II on Tuesdays at 12:30 p.m. for a game of Scrabble. Boards are available. Call Arlyne at (301-438-7442) if you are interested in playing.

Volleyball for Everyone. If you are a resident who wants to enjoy the inviting warm water of the social pool, join your peers in social volleyball on Wednesdays, Fridays and Saturdays at 3 p.m. No skills needed; just come and have fun. Competitive volleyball games are played on Mondays and Thursdays from 6-7:30 p.m. This game is for long-term, skilled players who want the intensity of competition and rarely miss the games. If you don't have a yearly indoor pool pass, a \$3 ticket good for one pool session may be purchased at the Clubhouse II E&R office. For more information, email Laurie Burdick at (lgburdick@aol.com).

BEST RATES IN DC

\$80 x Two Men- 2 or 3 Hours Minimum
• Pickups / Deliveries



CONTINENTAL MOVERS

Professional Movers Who Really Care

Owner Operated Since 1982
References - Local & Long Distance
Packing Services - Pianos & Big Objects



Call for a FREE Quote

202.438.1489 • 301.340.0602
www.continentalmovers.net

Pain Control

- Acupuncture - Acu Massage

- Auto & Work injury

We accept Health Insurance

SENIOR DISCOUNTS!

301-592-1234

CALL DR. LEE OR DR. MA SHA

EAST - WEST
ACUPUNCTURE AND HERB CLINIC LLC
東西漢醫院

11120 New Hampshire Ave, Suite 409
Silver Spring, MD, 20904

www.acupuncture-drs.com

Low interest rates getting you down? Let's talk.

William P Mason IV, AAMS®

Financial Advisor

17904 Georgia Ave Ste 107
Olney, MD 20832
301-774-8500
www.edwardjones.com

Edward Jones®
MAKING SENSE OF INVESTING

Member SIPC



NEW!

Solve your dog walking dilemma with the

Goin' In Style Dog Walker Organizer

Specially designed pockets for treats, waste bags and phone

Temporarily store used waste bag in the vinyl lined, zipper compartment

Charcoal sachet removes odor

FASHION + FUNCTION

Matching collars, leashes and bandanas available!

WWW.GOININSTYLE.COM

Now available at Gold Castle!

CLASSES & Seminars

Sign-up will be taken for newly advertised classes beginning on the Tuesday after the date of the edition of Leisure World News in which it appears. All sign ups begin at 8:30 a.m. in either Clubhouse I or II as noted in the class description. Residents can register for themselves and two other residents. **Please bring your Leisure World ID.**

If required enrollment is not met five days prior to the start date, the class will be cancelled.

*****Please note fees for non-residents: add \$10 for 1-6 session classes and \$20 for classes of 7 or more sessions.**

Payment can be made by check or credit card (MasterCard, VISA or Discover); no cash is accepted. Checks *must* be made payable to Leisure World of Maryland Corp. Please sign up in advance of the starting date of the class since instructors need to know how many will participate. **Note: Registration will not be accepted nor refunds issued after the completion of two sessions!**

Leisure World does not discriminate on the basis of race, color, national or ethnic origin in admission policies, education policies or programs.

MUSIC EDUCATION

NEW – More of the Most Stunningly Beautiful Music Ever Written and How to Listen To It!

“Journeys and Experiences of the Musical Mind” continues! Dr. Harry Dunstan’s very popular class explores even more stunningly beautiful music. Experience music in a new way, transform your life and bring unimaginable sonic beauty into your daily existence.

Every Friday morning participants will enter the most beautiful gardens of sound and discover what Mozart, movie themes, Lawrence Welk, “Field of Dreams,” Puccini and Dean Martin all have in common.

Ever-engaging, entertaining and erudite, Dunstan will explain the basic structural concepts of aesthetics and help you learn how listening, playing and experiencing music can be one of the greatest tools for positive mental and physical health. Simply experiencing beautiful music can improve your physical, mental and emotional life and is the single greatest agent to fight loneliness and depression. Come to this class...You’ll find beautiful music everywhere.

Class meets Fridays, July 12- Aug. 16, 11 a.m.-noon. **Fee: \$50. Register at Clubhouse I.**

RELIGION AND PHILOSOPHY

NEW – The Underlying Unity of Eastern Philosophical Thought – Vedanta, a CLL- and Friends of Indi Association-sponsored course: Vedanta, the world’s oldest philosophy still practiced today, speaks of an eternal religion of which all the world’s religions are a part.

This lecture series, led by Swami Chibrahmananda (Swami C), will explore the underlying metaphysics of this ideal and its practical applications within the context of one’s own religion. It will discuss the multitude of tools and practices for deepening one’s relationship with the Divine. The primary focus will be on principles and shared truths as opposed to dogmas and creeds. It will borrow from the scriptures of many of the world’s religions to form a cohesive idea of the underlying unity.

The lecture topics include: Vedantic Eden, The Goal and Its Attainment, Principles of Practice and Evolving to One, and will conclude with a summary overview.

Class meets Mondays, Aug. 5-Sept. 16 (no class Aug. 19 or Sept. 2), 10-11 a.m. **Fee: \$15. Register at Clubhouse I.**

For more information about the Center for Life-

long Learning (CLL) and its instructors, visit (www.cllmd.com).

EXERCISE

NEW – Ba Duan: This is the world’s oldest exercise for seniors and those who need to restore a normal, optimum state of health.

Participants will learn to combine joint movement and breathing to improve balance and augment core strength.

Limited enrollment.

Class meets Mondays, July 22-Sept. 23, 4-5 p.m. **Fee: \$20. Register at Clubhouse II.**

NEW – Tap Dancing in a Chair with Carol – a New Approach to Tap: If you are an experienced tapper and miss it or a beginner who always wanted to tap but right now your body says, “no,” then this is the class for you.

For experienced tappers, this will be a “remember when” and a “do I ever love tapping again”; for beginners you’ll enjoy an easy start with the basics, and before long you’ll feel like a real tapper. (Experienced tappers who don’t need a chair are welcome to take the class, but all students work from a chair.)

Each class is two hours; the first hour will focus on beginning tap terms and combinations, and the second hour on more advanced techniques and dances. Students are welcome and encouraged to participate in either or both hours of instruction.

Carol began taking tap lessons at age four, continuing through high school when she taught tap to offset the cost of lessons, and performed in recitals and community theater.

In college, she taught dance for the Physical Education Department and, in the summer, continued to perform in local theater. While her career took her in another direction, her love affair with dance has never ended. If you have

questions, give Carol a call at (301-598-5980).

Class meets Thursdays, July 25-Aug. 29, 3-5 p.m. **Fee: \$40. Register at Clubhouse II.**

Zumba Gold with Denny – Mondays, Wednesdays or Fridays:

This program was designed for the older active adult, a person who has not exercised in a long time or individuals who may be limited physically. The biggest difference between Zumba Gold and Zumba Basic is that Zumba Gold is done at a much lower intensity. It is just as much fun, just not as fast! Zumba Gold utilizes the same great Latin styles of music and dance that are used in the Zumba basic program.

Class meets Mondays, July 8-Aug. 26, 10:30-11:30 a.m.; Wednesdays, July 10- Aug. 28, 10-11 a.m.; or Fridays, July 12-Aug. 30, 1-2 p.m. **Fee: \$60 for one day; \$107 for two days; \$160 for three days. Register at Clubhouse II.**

Gentle Yoga – Wednesdays and Saturdays with Marilyn:

Yoga is a holistic system that combines movement, posture, breathing and relaxation techniques to improve overall health and well-being – physically, mentally and spiritually. A consistent yoga practice has been shown to increase mobility, strength and flexibility, and to provide skills to cultivate a peaceful mind in the face of life’s stresses and challenges.

This class is designed for individuals with some ability to get up and down off the floor and can be adapted according to the need of the practitioner. Beginners and ongoing students are welcome. Bring a yoga mat or blanket to the first class.

Class meets Wednesdays, July 24-Sept. 25 and/or Saturdays, July 20-Sept. 21, 9-10:15 a.m. **Fee: \$84/one day, \$145/two days per week. Register at Clubhouse I.**

The Karen Rollings Team



Karen Rollings



Kathy Workman

Berkshire Hathaway HomeServices PenFed Realty

301-924-8200

www.TheKarenRollingsTeam.com



BERKSHIRE HATHAWAY | PenFed Realty
HomeServices

3410 N High St
Olney, MD 20832
301-260-7700



Recent Solds "Around the World"!

Address	Subdivision	Type	Beds	Baths	Asked	Got	Subsidy
3310 N LEISURE WORLD BLVD #815-6	Fairways North	Unit/Flat/Apartment	2	2	\$155,000	\$147,500	\$0
3330 N LEISURE WORLD BLVD #208	Fairways South	Unit/Flat/Apartment	2	2	\$215,000	\$215,000	\$0
3433 S LEISURE WORLD BLVD #86-1C	Montgomery Mutual Coop	Unit/Flat/Apartment	2	1.5	\$125,000	\$125,500	\$0
3346 CHISWICK CT #58-2D	Montgomery Mutual Coop	Unit/Flat/Apartment	2	1.5	\$129,900	\$129,000	\$0
3100 N LEISURE WORLD BLVD #716	Overlook	Unit/Flat/Apartment	2	2	\$225,000	\$225,000	\$0
15316 PINE ORCHARD DR #82-1G	Rossmoor Mutual	Unit/Flat/Apartment	2	2	\$169,000	\$167,000	\$300
15310 BEAVERBROOK CT #89-1K	Rossmoor Mutual #19B	Unit/Flat/Apartment	3	2	\$187,500	\$187,500	\$0
15301 BEAVERBROOK CT #2G	Rossmoor Mutual #19B	Unit/Flat/Apartment	2	2	\$155,000	\$153,000	\$0
15311 BEAVERBROOK CT #90-1F	Rossmoor Mutual #19B	Unit/Flat/Apartment	3	2	\$189,000	\$196,000	\$0
3632 EDELMAR TER #124-B	Rossmoor Mutual #9	Twin/Semi-Detached	2	1	\$260,000	\$240,000	\$0
15101 INTERLACHEN DR #1-516	The Greens	Unit/Flat/Apartment	1	1	\$138,500	\$132,000	\$0
15115 INTERLACHEN DR #3-704	The Greens	Unit/Flat/Apartment	2	2	\$299,990	\$300,000	\$0
15100 INTERLACHEN DR #4-424	The Greens	Unit/Flat/Apartment	2	2	\$249,900	\$245,000	\$750
15100 INTERLACHEN DR #4-110	The Greens	Unit/Flat/Apartment	2	2	\$225,000	\$215,000	\$0
3005 S LEISURE WORLD BLVD #511	Turnberry Courts	Unit/Flat/Apartment	2	2	\$355,000	\$355,000	\$0
3005 S LEISURE WORLD BLVD #314	Turnberry Courts	Unit/Flat/Apartment	2	2	\$219,500	\$219,500	\$0
3200 N LEISURE WORLD BLVD #1012	Vantage Point East	Unit/Flat/Apartment	2	2	\$309,000	\$305,000	\$1,200
3200 N LEISURE WORLD BLVD #112	Vantage Point East	Unit/Flat/Apartment	2	2	\$300,000	\$294,000	\$0



UNDER CONTRACT!!!

3100 N Leisure World Blvd, #1002

Updated kitchen and enclosed balcony
overlooks golf course, pond, & tree tops!



UNDER CONTRACT!!!

3100 N Leisure World Blvd, #1026

Spacious & updated 2 BR, 2 FBA condo!
Enclosed balcony with incredible views!



SOLD!!!

3480 Chiswick Court, #41-E

Gorgeously updated 2 level co-operative!
Stainless steel appliances & granite counters!

Need New Carpet?

Serving Montgomery County for 30 years! We are the company for all your flooring needs.
Carpeting, Hardwood, Laminate, Ceramic, Marble, Commercial, Residential. We do it all! We
carry major brand names in carpeting and hard surface flooring.

Trust our experience and knowledge of the industry.

301-924-7331

18167 Village Center Drive
Olney, MD 20832
(in the Olney Village Center)

www.carpetandvacuumexpo.com

CARPET & VACUUM
EXPO

\$100
off installation!
301-924-7331

only for purchases over \$1000. Offer not valid with any other offers.

Perrie, LLC Presents

CRAB FEAST

ALL YOU CAN EAT CRAB FEASTS!!!

JULY 31

SEPTEMBER 25

AUGUST 28

OCTOBER 30

Tickets on sale now!

\$55 per ticket plus applicable sales tax



Stein Room and Terrace Room now offer delivery!

Call us at 301-598-1330 to place your order.

No minimum order amount! Only a \$4 surcharge for delivery.

Clubhouse Grille Hours: Tues. – Sat.: 4 p.m. – 9 p.m.

Stein and Terrace Room Hours: Sunday: 9:30 a.m. – 8 p.m. | Mon. – Tues.: 9 a.m. – 8 p.m. | Wed. – Sat.: 9 a.m. – 9 p.m.

For Clubhouse Grille Reservations, call 301-598-1330 | For Stein and Terrace Room reservations, call 301-598-1331

CALENDAR *of Events*

Dial 301-598-1313
for recorded Daily Events

Friday, July 5

Clubhouse I

1:30 p.m. Watercolor Any Level Art Class
3:00 p.m. Hispanos de LW: Bingo
7:00 p.m. Friday Duplicate Bridge
Clubhouse II
1:00 p.m. Ping-Pong Club
1:00 p.m. Chess Club
1:00 p.m. Friday Bridge Club
4:00 p.m. Pickleball Club

Saturday, July 6

Clubhouse I

9:00 a.m. Gentle Yoga Class
10:00 a.m. Open Art Studio
10:00 a.m. American Needlepoint Guild
6:00 p.m. Sock Hop Group
Clubhouse II
9:15 a.m. JRLW Service
11:00 a.m. Pickleball Club
2:00 p.m. Going It Alone Club: Social

Sunday, July 7

Clubhouse I

No Scheduled Activities.

Clubhouse II

11:30 a.m. Pickleball Club
6:00 p.m. Baby Boomer Club Game Night

Monday, July 8

Clubhouse I

9:15 a.m. Stretch, Tone and Strength Training Class
10:00 a.m. Garden and Environmental Club
10:30 a.m. Stretch, Tone and Balance Class

1:00 p.m. Oils and Acrylics Art Class
1:30 p.m. Leisure World Chorale

Clubhouse II

9:00 a.m. Senior Sneakers Class
10:30 a.m. Zumba Gold Class
11:00 a.m. Chair Yoga Class
12:30 p.m. Men’s Bridge
1:00 p.m. Chess Club
1:30 p.m. Computer Learning Center: Android Help Session
2:00 p.m. Chair Yoga Class
2:00 p.m. Line Dance Class
3:00 p.m. Line Dance Class
3:00 p.m. Ping-Pong Club
4:00 p.m. Ba Duan Exercise Class
5:30 p.m. Pickleball Club
5:30 p.m. Model Railroad Club Operating Session

Tuesday, July 9

Clubhouse I

9:30 a.m. Any Medium Art Class
9:30 a.m. Garden Plot Group
10:00 a.m. CLL Course: Advanced Conversational Spanish
11:30 a.m. 9-Hole Ladies Golf Luncheon
1:00 p.m. CLL Course: Intermediate Conversational Spanish
1:00 p.m. Amateur Radio Club
1:30 p.m. Book Club Network: Non-Fiction

5:00 p.m. Lawn Bowls Club
7:00 p.m. Trivia Club
7:00 p.m. Duplicate Bridge
Clubhouse II
9:30 a.m. Beginner and Advanced Tai Chi Class
11:00 a.m. Mild Exercise Class
11:00 a.m. Water Exercise Class
12:30 p.m. Pickleball Club
12:30 p.m. Scrabble Group
1:00 p.m. Non-impact Fusion Water Exercise Class
1:30 p.m. Comedy and Humor Club
2:00 p.m. Fitness Center Orientation Tour
4:00 p.m. Pickleball Club

Wednesday, July 10

Clubhouse I

9:00 a.m. Gentle Yoga Class
10:00 a.m. Applied Principles – Any Medium Art Class
1:00 p.m. Oils, Acrylics and Miniatures Art Class
6:45 p.m. Chicago Bridge

Clubhouse II

10:00 a.m. Zumba Gold Class
11:00 a.m. Mild Exercise Class
1:00 p.m. Chess Club
1:00 p.m. Ping-Pong Club
1:00 p.m. Aqua Fit Class
1:00 p.m. Rossmoor Library Guild Meeting: New Library System
2:00 p.m. Chair Yoga Class
5:15 p.m. Pickleball Club
5:30 p.m. Model Railroad Club Operating Session

Thursday, July 11

Clubhouse I

9:15 a.m. Stretch, Tone and Strength Training Class
10:00 a.m. Painting is for Everyone Basic Watercolor Art Class
10:30 a.m. Stretch, Tone and Balance Class
11:00 a.m. Writers of Leisure World
12:30 p.m. Ladies Bridge
1:00 p.m. Portraits – People and Animals Art Class
3:00 p.m. Stamp and Coin Club
6:00 p.m. Lawn Bowls Club
7:00 p.m. Democratic Club

Clubhouse II

9:00 a.m. Senior Sneakers
9:30 a.m. Beginner and Advanced Tai Chi Class
9:30 a.m. Quilting Group
11:00 a.m. Water Exercise Class
11:30 a.m. Pickleball Club
12:30 p.m. Men’s Bridge
1:00 p.m. Non-impact Fusion Water Exercise Class
2:00 p.m. Model Railroad Club Operating Session
2:00 p.m. Mind-Body Exercise Club
3:00 p.m. Tap Dancing in a Chair Class
4:00 p.m. Pickleball Club
4:00 p.m. Friends of India Association
6:00 p.m. Tennis Club: Ice Cream Social and Meeting

Leisure World Mutual Meetings

July 9

Mutual 16 Board
9:30 a.m., Sullivan Room
Mutual 19A Board
9:30 a.m., Clubhouse II
Mutual 7 Board
1:15 p.m., Sullivan Room

July 10

Mutual 11 Board
10:00 a.m., Sullivan Room

July 11

Mutual 27 Board
10:00 a.m., Community Room
Mutual 12 Board
1:00 p.m., Sullivan Room

July 16

Mutual 14 Board
9:30 a.m., Sullivan Room
Mutual 25 Board
7:00 p.m., Sullivan Room

July 17

Mutual 5 Board
9:30 a.m., Sullivan Room

July 18

Mutual 15 Board
9:30 a.m., Sullivan Room

July 22

Mutual 9 Board
10:00 a.m., Sullivan Room

Meeting times and locations subject to change. Sign in to (residents.lwmc.com) and check the calendar for any changes. Mutual board meetings are open to respective mutual residents and absentee owners.

Meetings of the LWCC Board of Directors, Executive Committee and Advisory Committees

Audit

July 22, 2:00 p.m., Sullivan Room

Budget and Finance

July 17, 10:00 a.m., Clubhouse II

Communications

July 18, 10:00 a.m., Clubhouse I

Community Planning

July 8, 9:30 a.m., Sullivan Room

Education and Recreation

July 9, 9:30 a.m., Clubhouse I

Energy

July 16, 9:30 a.m., Clubhouse I

Golf and Greens

July 19, 9:30 a.m., Clubhouse I

Health

July 17, 1:00 p.m., Clubhouse I

Landscape

July 11, 9:30 a.m., Clubhouse II

Restaurant

July 15, 10:00 a.m., Clubhouse I

Tennis and Pickleball

July 10, 1:30 a.m., Sullivan Room

Security and Transportation

July 11, 9:30 a.m., Clubhouse I

LWCC Board of Directors

July 30, 9:30 a.m., Clubhouse I

The meeting airs on Aug. 5, 7 and 9 at 4 p.m. and 7 p.m. on channel 974.

LWCC Executive Committee

July 19, 9:30 a.m., Sullivan Room

The meeting airs on July 24, 25 and 26 at 4 p.m. and 7 p.m. on channel 974.

Meeting times and locations subject to change. Sign in to (residents.lwmc.com) and check the calendar for any changes. Meetings are open to all residents and absentee owners.

Friday, July 12

Clubhouse I

11:00 a.m. More of the Most Stunningly Beautiful Music Ever Written and How to Listen to It Class
11:00 a.m. Book Club Network: Literary Ladies Who Lunch
1:30 p.m. Watercolor Any Level Art Class
3:00 p.m. Hispanos de LW movie: “Under the Same Moon”
5:00 p.m. Arts in Motion: Jazz Singer Sheila Ford
7:00 p.m. Friday Duplicate Bridge
Clubhouse II
10:00 a.m. Chinese Club
1:00 p.m. Ping-Pong Club
1:00 p.m. Chess Club

1:00 p.m. Friday Bridge
1:00 p.m. Zumba Gold Class
4:00 p.m. Pickleball Club

Saturday, July 13

Clubhouse I

10:00 a.m. Open Art Studio

Clubhouse II

9:15 a.m. JRLW – Sabbath Service
2:00 p.m. Going It Alone Club: Social
7:00 p.m. E&R Event: Guitarist Richard Miller

Sunday, July 14

Clubhouse I

No Scheduled Activities.

Clubhouse II

11:30 a.m. Pickleball Club

Monday, July 15

Clubhouse I

9:15 a.m. Stretch, Tone and Strength Training
10:30 a.m. Stretch, Tone and Balance Class
1:00 p.m. Oils and Acrylics Art Class
1:30 p.m. Leisure World Chorale
1:30 p.m. Hadassah: Judaic Study Group
2:00 p.m. Washington DC Natives and Friends Group
7:00 p.m. Bingo

Clubhouse II

9:00 a.m. Senior Sneakers Class
10:00 a.m. Clipper Workshop
10:30 a.m. Zumba Gold Class
11:00 a.m. Chair Yoga Class
12:30 p.m. Men's Bridge
1:00 p.m. Chess Club
1:30 p.m. Computer Learning Center: Android Help Session
2:00 p.m. Chair Yoga Class
2:00 p.m. Line Dance Class
3:00 p.m. Ping-Pong Club
3:00 p.m. Line Dance Class
4:00 p.m. Ba Duan Exercise Class
5:30 p.m. Pickleball Club
5:30 p.m. Model Railroad Club
Operating Session

Tuesday, July 16

Clubhouse I

9:00 a.m. Blood Pressure and Hearing Testing
9:30 a.m. Beginner and Advanced Tai Chi Class
9:30 a.m. Any Medium Art Class
10:00 a.m. CLL Course: Advanced Conversational Spanish

1:00 p.m. CLL Course: Intermediate Conversational Spanish
1:00 p.m. Open Studio
5:00 p.m. Lawn Bowls Club
7:00 p.m. Trivia Club
7:00 p.m. Duplicate Bridge Game

Clubhouse II

9:00 a.m. Strategic Planning Survey Help Session
11:00 p.m. Mild Exercise Class
11:00 a.m. Water Exercise Class
12:30 p.m. Scrabble Group
1:00 p.m. Non-impact Fusion Water Exercise Class
1:00 p.m. Stroke Support Group
1:30 p.m. Comedy and Humor Club
4:00 p.m. Pickleball Club

Wednesday, July 17

Clubhouse I

10:00 a.m. Rossmoor Library Guild
10:00 a.m. Applied Principles – Any Medium Art Class
11:00 a.m. Short Story Group
1:00 p.m. Oils and Acrylics Art Class
1:00 p.m. Lions' Vision Support Group
6:45 p.m. Chicago Bridge

Clubhouse II

8:00 a.m. Pickleball Club
11:00 p.m. Mild Exercise Class
1:00 p.m. Chess Club
1:00 p.m. Ping-Pong Club
1:00 p.m. Aqua Fit Exercise Class
2:00 p.m. Health Advisory Committee: Expert Speaks on Medical Marijuana
2:00 p.m. Chair Yoga Class
5:30 p.m. Model Railroad Club

Operating Session

7:30 p.m. E&R Event: Olney Concert Band

Thursday, July 18

Clubhouse I

9:15 a.m. Stretch, Tone and Strength Training Class
10:00 a.m. Basic Watercolor Art Class
10:30 a.m. Stretch, Tone and Balance Class
11:00 a.m. Writers of Leisure World
12:30 p.m. Ladies Bridge
1:00 p.m. Portraits – People and Animals Art Class
2:00 p.m. Book Club Network: Thursday Readers
6:00 p.m. Lawn Bowls Club

Clubhouse II

9:00 a.m. Senior Sneakers Class
9:30 a.m. Beginner and Advanced Tai Chi Class
10:00 a.m. Stitching Group
11:00 a.m. Water Exercise Class
11:30 a.m. Pickleball Club
12:30 p.m. Men's Bridge
1:00 p.m. Non-impact Fusion Water Exercise Class
1:00 p.m. E&R Movie: "Little Italy"
2:00 p.m. Model Railroad Club
Operating Session
2:00 p.m. Mind-Body Exercise Club
4:00 p.m. Pickleball Club
4:00 p.m. Friends of India Association

Friday, July 19

Clubhouse I

9:00 a.m. Cannabis 101 Club: Maryland Medical Cannabis Commission Registration

10:00 a.m. Book Club Network: Bookies

11:00 a.m. More of the Most Stunningly Beautiful Music Ever Written and How to Listen to It Class
12:15 p.m. Kiwanis Club
1:00 p.m. Cannabis 101 Club: Cannabis Health and Wellness Fair
1:30 p.m. Watercolor Any Level Art Class

2:00 p.m. Town Meeting Organization
3:00 p.m. Hispanos de LW: Bingo
7:00 p.m. Friday Duplicate Bridge

Clubhouse II

12:00 p.m. Lions' Charity Golf Tournament Awards Luncheon
1:00 p.m. Zumba Gold Class
1:00 p.m. Ping-Pong Club
1:00 p.m. Chess Club
1:00 p.m. Friday Bridge Club
7:00 p.m. Baby Boomer Club: Movie

Saturday, July 20

Clubhouse I

9:00 a.m. Gentle Yoga Class
10:00 a.m. Open Studio
1:00 p.m. Arts in Motion: "Authors In Mind"

Clubhouse II

9:15 a.m. Shabbat Service
11:00 a.m. Pickleball Club
1:00 p.m. Going It Alone Club: Annual Meeting
7:00 p.m. Sock Hop Group

Sunday, July 21

Clubhouse I

No Scheduled Activities.

Clubhouse II

11:30 a.m. Pickleball Club

ALZHEIMER'S DISEASE AND DEMENTIA CARE CONSULTATIONS

One-on-one assistance from Diane Vance, programs and services manager of the Alzheimer's Association National Capital Area Chapter

2ND WEDNESDAY OF EACH MONTH COMPLIMENTARY 50-MINUTE SESSIONS

BROOKE GROVE REHABILITATION AND NURSING CENTER
18131 SLADE SCHOOL ROAD • SANDY SPRING, MD 20860

This service is designed to help caregivers — as well as those who are newly diagnosed — cope with the impact of Alzheimer's and other forms of dementia, enabling participants to better understand the disease, manage care and make informed decisions regarding services and treatments. Consultant Diane Vance can assess current needs, help develop a care plan, address behavioral and communication concerns, share coping techniques, discuss care options, provide resources and more. Care consultations may be scheduled at any time during the dementia journey.

To schedule your appointment, contact Toni Davis
at 301-388-7209 or tdavis@bgf.org.




BROOKE GROVE
RETIREMENT VILLAGE





LEISURE WORLD

**HAS SO MANY WAYS TO
KEEP UP WITH COMMUNITY
NEWS AND EVENTS:**



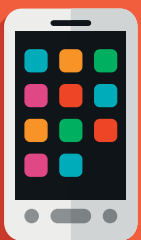
Leisure World News

- Community News
- Calendar of Events
- Calendar of Meetings



Resident Website (residents.lwmc.com)

- Community News
- Community Calendar
- News Alerts



Recorded Daily Events (301-598-1313)

Mobile Access to (residents.lwmc.com)

Social Media

- Twitter | @LeisureWorldMd
- Facebook | Leisure World of Maryland



TV Channels

- 972 - Daily Events and Announcements
- 974 - Weekly Events and Meeting Broadcasts

CLASSIFIEDS

THE LEISURE WORLD of Maryland NEWS reserves the right to reject or discontinue any advertisement believed inimical to the best interest of Leisure World. The News shall accept advertising on the same basis as other reputable publications: that is, it shall not knowingly permit a dishonest advertisement to appear in the Leisure World of Maryland News, but at the same time the News will not undertake to guarantee the reliability of its advertisers.

The News recommends that before a resident engage any service herein advertised, that the resident request and verify applicable credentials (i.e. bonded, licensed, insured) and references.

For information on placing advertisements in the Leisure World News, email (lwnewsads@lwmc.com) or call (301-598-1310).

ESTATE SALES

CASH FOR ESTATES; whole apartment contents, whole house contents, storage lockers. Buy out/clean up. (theatticllc.com) Gary – (301-520-0755).

ATTIC TO BASEMENT ESTATE Cleanouts LLC — I provide honest and confidential estate cleanouts with reasonable rates. I assist executors, family members and guardians with a personal touch. I will save you time and money providing fast, efficient service. I work with local auction and hauling companies. Please call or email me to set up an appointment. Janet Ray (301-384-3198), (wishalot10@aol.com).

LOOKING TO DOWNSIZE, move or sell all household items or just a few? What about that storage unit? Call Estate Sales by Cheryl, LLC! Let's get started making you a profit! (301-437-2705)

REAL ESTATE FOR SALE

A WISE CHOICE. Call me. Marilyn Rubinstein of Weichert Realtors. Your expert in this great community. Top 1% Nationwide. #1 Office Producer with over 40 years of experience and hundreds of sales right here. Call me for a free market analysis. Please call and we'll talk. I make buying or selling an enjoyable and successful experience. Call Marilyn today (301-674-1288).

Announcing a NEW REAL ESTATE PARTNERSHIP, Sue Heyman, Rick Winkler and Sudha Baxter. Rely on our combined strengths, Top Weichert Producers, plus backgrounds in Teaching, Tax and Business. We are located at the Leisure World Plaza Weichert Office and have personal knowledge of the Community from the investor and resident perspective. See our display ad in this issue to review our current listing choices, to

see other available properties and to request a free competitive analysis. Office (301-681-0550), Sue (301-580-5556), Rick (301-404-3105), Sudha (202-368-8536).

The number of PATIO HOMES on the market is at an all time low. If you have been thinking of selling, now is the time. \$\$\$\$ Douglas Realty (866-987-9397). Call Eve Rados Marinik for a free market analysis of your home. (301-221-8867), (evemhomes@gmail.com).

COMING SOON: 2 bedroom with 2 full baths and garage in the Overlook. Fresh paint, new flooring, beautiful view! \$250,000. The Greens, 3 bedrooms and 2 full baths, garage, close to elevator, hwf, updated kitchen, low \$300,000s. Douglas Realty (866-987-9397). Call Eve Rados Marinik, (301-221-8867) (evemhomes@gmail.com).

REAL ESTATE WANTED

LOOKING TO PURCHASE a 2-bedroom, 2-bath, 1,200-1,300 square feet. Moving to Leisure World in August. Call (608-284-7734).

REAL ESTATE FOR RENT

Price reduced. FIRST-FLOOR OCEAN-FRONT condo. Sea Colony, Bethany Beach, DE. Condo and beach are wheelchair-accessible. August weeks available. Everything provided: full kitchen, all linens, towels, beach chairs, umbrella and toys for children. Two bedrooms and den, cable, wi-fi, TV, parking space below; new refrigerator, new microwave, sleeps 8+; you only need to bring your bikini. \$2,500 or negotiable per week. Sorry, no pets allowed. For more information or to reserve a week call Judy (301-520-1119).

3 BEDROOM, 2 FULL BATH patio home with eat-in kitchen, 1 car garage. Furnished. Utilities included. \$3,950 per month. Call (410-868-1110).

APARTMENTS TO SHARE

Looking for NON-SMOKING ROOMMATE. In LW. One bedroom, private half bath. Call (301-366-7689).

FOR SALE

CLUB CAR (Precedent Electric) 2014. New batteries, new head/tail lights, HD rear springs, new tires, extended top installed, Doorworks Sunbrella with WindSeal kit installed, single-point water system with hand pump, five-panel rear-view wide mirror, new windshield, turn signals. Bought in February 2018.

Not used by this owner. Contact Vinetta (301-598-3248). Come to see and make offer.

MOVING SOON! Selling French antiques: sofa, buffet, cocktail table, rushed dining chairs, Oriental rug, lamps, mirror and many original decorative items. Also two Amish-made oak bookcases, 72H x 36W x 16D and two Havertys armchairs, steel blue, all in excellent condition. See pictures on Clubhouse I bulletin board. Call Claude (301-288-4972).

Lightly used Invacare Tracer SX5 RECLINING WHEELCHAIR. Adjustable height. Headrest. Leg rests not included. \$350. Sells new for \$1,000+. Call Diana at (301-963-0630) or email (ddelmar@mindspring.com).

BOAT ACCESSORIES. Dock cables, lines, anchor, fenders, float cushions, rods, reel, heaters, bottom paint, flare gun kit, air pumps, miscellaneous. Richard (301-318-2722).

CHINESE FURNITURE. Three breakfronts, dining table and chairs, Chinese family portraits in watercolor, high-end tables and more. All in Leisure World. (717-498-0373), (301-788-4997).

RETAIL SALES

SCHAEFFER'S PIANO COMPANY. Founded 1901, Fourth generation family ownership. New Kawai dealer. New and used pianos — Steinway, Kawai, Yamaha, Schaeffer. (schaefferspiano.com). (301-424-1144)

AUTO SALES

2016 TOYOTA CAMRY LE. Four-door. MD-inspected, like new. Only 13,500 miles. One owner. \$17,999. Dealing with Leisure World for 43 years. Licensed and bonded. Cash or cashier's check for your car, van or truck. Please call Marty Salins at Auto Plaza (301-325-1973).

2005 TOYOTA SOLARA. Two-door, convertible, V6, SLE, pearl-white, loaded with leather, aluminum wheels, all-power. Like new. MD-inspected. Timing belt and water pump done recently with receipts. \$7,900. Dealing with Leisure World for 43 years. Licensed and bonded. Cash or cashier's check for your car, van or truck. Please call Marty Salins at Auto Plaza (301-325-1973).

FAST CASH FOR USED CARS — Big dollars paid for your used car! Over 43 years' experience

serving Leisure World. Please call; available 24 hours. I will come to you. Cash or cashiers' check at your request. I can also help with your new car purchase, any make or model! MD Dealer #U2927. Call Marty Salins (301-325-1973).

I BUY CARS and trucks. Fast and courteous service. Licensed dealer. I will come to you to look at the vehicle. Tom (301-806-8140).

TRANSPORTATION SERVICES

YOUR PERSONAL DRIVER is here: Lifelong local resident. Reliable, competent service. Safe, accident-free driving record. Comfortable, clean vehicle; can seat from one to six passengers. Airports, cruiseports, trains, theatres, casinos, restaurants, appointments. Anywhere... including long distance trips to other states. Reservations available 24/7. Call 7 a.m.-10 p.m. with questions or to schedule your ride: Steven Saidman. Cell/text (301-933-8899). Email (Steve.Your.Driver@gmail.com).

CALL & RIDE — Doctors, airport, casino. Will pick up your groceries. Always on time. Over 250 satisfied customers from Leisure World. Call all night for emergencies also. Larry Kraft (240-743-8287).

DRIVER WITH CONCIERGE STYLE at regular rates. I am a Leisure World resident and I understand the needs of our community. My service is a four-door Mercedes-Benz sedan with all the comforts of a leather-seat luxury car, temperature-controlled interior, ample trunk space and a smooth ride. Most important is my dependability and providing any personal assistance you may need. Call Ken at (508-612-9647).

CAREGIVING AND HEALTHCARE

Healthcare professionals must provide current proof of certification or license from the Maryland Board of Nursing to include "certified" or "licensed" in their advertisement. Examples of positions requiring such proof include, but are not limited to, registered nurse, licensed practical nurse, certified nursing assistant, geriatric nursing assistant and medication technician.

"A" HOME HEALTH CARE for Senior Citizens — Care you can trust and is affordable. Reliable and qualified aide and nursing staff available. Companionship, personal care, meds, housekeeping, shopping, driving. Full/part-time or live-in. Flat rate for live-in care. Call (240-533-6599).

FLAT RATES, ONE WEEK FREE. "Care You Can Trust and

Afford.” Reliable, experienced caregiver providing hygiene care, medication reminders, meals, housekeeping, errands, appointments etc. Full/part-time, live-in, overnight or weekend. Call today: (301-490-1146).

ELDERLY CARE: Over 10 years’ experience. Great reference. Available for long days or nights. Can drive. Leisure World resident. (240-461-2188).

CNA/COMPANION over 20 years’ experience with the elderly. Available Monday through Friday days, nights or weekends. Full or part-time, live-in/out. Good references. Also available to travel out of state with my clients. Call (301-442-9324). Own transportation.

CNA WITH CPR LICENSE. I have been looking after elderly ladies and gentlemen since 1992. I would like a live-in and full-time position. I’m a good person and I smile. Call (202-702-5022).

CNA/GNA/MED TECH with CPR and first aid license. Experience working with elderly. Have worked with agencies, nursing homes and also private duty. Am available full-time or part-time. Please call (240-252-0439), (240-713-1654), or email (sapomadezeus@yahoo.com).

SERVING YOU HOME CARE: Our family serving your family.

License #R4289. We believe in a holistic approach to care: body, mind and emotion to achieve optimal health and wellness. Five-step wellness program: safety, nutrition, mental health, socialization, physical activity. (410-980-3145), (www.servingyouhomecare.com), (info@servingyouhomecare.com).

WeSAP NURSING SERVICES. We support aging in place. Nursing care, personal care and non-skilled care. Services catered to individual needs. Advocate of equality. Call for free consultation (301-604-4201), (240-286-0778), (wesapllc@gmail.com), (wesapllc.com).

I AM A CNA. Licensed in nursing, RN in Philippines. 18 to 20 years’ experience as a caregiver. Worked 3.5 years in assisted living and private duty for more than 15 years. Duties include personal hygiene, light housekeeping, shopping, meal preparation, dressing, errands, cooking, doctor’s appointments, medication reminders. Own car. Dependable, loving, hard worker with excellent references. (301-820-0421).

Looking for an **EXPERIENCED CAREGIVER** for your loved one? Reliable, affordable rates, with excellent references within and outside the Leisure World community. Experience and

care settings include 18 years caregiver, companion, hospice care, live-in/live-out. (240-483-8103).

OVERNIGHT CAREGIVER with more than 14 years’ experience with seniors and people with special needs. I provide safe, respectful, loving, skilled care towards every one of my patients. I will deliver peace of mind to family members by keeping their loved ones safe while also protecting their independence and preserving their dignity. I give detailed information and pay close attention to my clients and to the families’ needs. I have taken care of many people from family members, friends and clients in facilities to group home members and privately cared-for patients. Whatever the needs may be, I strive to go above and beyond my call of duty. Life is a treasure and if I can provide life or encouragement to anyone, or let them know that they are still loved and living with grace and dignity, I am that Angel. Arafa (240-883-8933), (brownzebra@hotmail.com). Availability: 10 p.m.-7 a.m.

PROVIDING QUALITY AND AFFORDABLE CARE: Personal care, companionship, nursing care, housekeeping, shopping. Live-in and live-out, full/part-time. Licensed, insured and bonded. Call for free consultation (240-510-8337).

PERSONAL HEALTH CARE AIDE — CNA with many years of experience. Help with ADLs, driving to doctors, grocery, errands. Good references upon request. Contact Ruth at (240-476-7372).

A BLS (Basic Life Support) -CERTIFIED CAREGIVER/ CARETAKER. Able to complete tasks such as daily motivations, transportation, cooking, cleaning, grocery shopping, organizing, companion care, CPR, landscaping, mechanical issues, etc. Offering personalized customizable care and assistance as needed for clientele. Depending on amount of tasks and time needed, pricing starts at \$13/ hour. Please call Robert Dibble at (301-384-4216) or (301-221-6202) with any questions. If preferred can also send an email at (Cloud500@msn.com). Thank You.

CNA, MEDTECH. Available Monday, Tuesday, Wednesday, day and night. Also does errands, light housekeeping, cooking. (Rosina1@comcast.net), (240-551-6468).

MARIE BAH. Very caring person with 15 years’ experience in senior care. Board-certified nursing assistant in both Maryland and Virginia. Love and cherish every single second spent with senior citizens. Very flexible and adapt very easily. Excellent references

We Provide Compassionate Urology Care for the Residents of Leisure World.

Chesapeake Urology is conveniently located at 3801 International Drive in Silver Spring, just around the corner from Leisure World.



Richard A. Kurnot, M.D.
General Urology for Men and Women



Cheryl Shih, M.D.
General Urology for Men and Women: English, Mandarin Chinese, Spanish



Vik Uberoi, M.D.
General Urology for Men and Women: English, Hindi, Spanish



Anup A. Vora, M.D.
General Urology for Men and Women: English, Hindi, Gujarati, Spanish

Chesapeake UROLOGY

The most personal care for life’s most personal issues.

301-598-9717

chesapeakeurology.com

Prostate, Bladder and Kidney Cancers and Conditions • Kidney Stones • Erectile Dysfunction • Urinary Tract Infections • Pelvic Pain • Bladder Control Conditions • Enlarged Prostate
Female Urinary Incontinence • Pelvic Organ Prolapse • IC/Painful Bladder • Pelvic Pain

from families I’ve worked for. (240-694-5950).

HHA, CPR and FIRST AID -certified. I care about my patients. 12 years’ experience. Activities of daily living, doctors’ appointments, bathing, light cleaning, cooking, laundry, shopping, companionship. Friday, Saturday and Sunday. Day/night. Price negotiable. (240-643-3859).

SPECIALITY IN PRIVATE DUTY cases. 20 years’ home health services expertise. Light housekeeping, running errands, special needs, doctors’ appointments, ADLs, companionship, meal preparation, medication reminders and more! Bebe (240-481-7055), (kmabinty78@yahoo.com).

COMPASSIONATE AND RELIABLE GNA. Over 15 years’ experience in nursing homes, private duty in homes including at Leisure World. Available flexible times, especially weekends and evenings. Call Ellen at (301-580-9808).

CERTIFIED NURSING ASSISTANT, competent and compassionate with 13 years’ experience. Great references and drives. Cell phone (240-393-1625).

CNA/CMT – over 16 years of experience. Very dependable. Excellent references in LW. Have car. Light cooking, doctor’s appts., escort service, errands. Bonded, insured. Call Ana (240-491-8978), (240-277-7403).

I AM CNA/GNA with more than 15 years’ experience and worked in nursing home, assisted living and home care. Duties include personal hygiene, light housekeeping, laundry, shopping, meal preparation, bathing, dressing, errands, transportation to appointments and medication reminders. Filipina, U.S. citizen, can drive and with own car, honest, dependable, loving and hard worker, with excellent references. Please call (240-643-3392) cell, (301-926-2547) home. (salardaluzviminda@yahoo.com)

GERIATRIC NURSING ASSISTANT (GNA), Certified Medicine Aide. Caregiver with a passion. Assist with bathing, companionship, help with feeding, transfer from chair to bed. Keeps the room clean. I can give or help with medicine and follow prescriptions. Night schedule, 11 p.m.-7 a.m. Weekend schedule can be flexible if need be. (240-708-3284).

HOME SERVICES

KITCHEN AND BATHROOM Remodeling – Cabinet and countertop replacement, and bathtub to accessible shower conversions. Please call Joe at

JML Remodeling. (301-598-8400). Serving Leisure World since 1988. MHIC# 36674. Thank you.

STAIR LIFTS: Never walk up steps again! Buy new or certified pre-owned stair lifts at reduced prices. Installation, lifetime warranty and free service contract included. Call (301-448-5254).

CONTINENTAL MOVERS. Local moving services. Free boxes. Local – long distance – hauling – pick-ups and deliveries. \$80 x two men, one hour driving time. (202-438-1489) (301-340-0602) (Cmora53607@msn.com) (www.continentalmovers.net).

M.G.V. PAINTING & DRYWALL – Interior and exterior painting. Water damage repairs. Minor carpentry and other odd jobs. 30 years’ experience. Insured. References in your complex. Reasonable rates. Call Mike at (301-655-5433) for a free estimate!

LANDSCAPING SERVICES: Beautifying LW, one property at a time! Reliable, affordable and experienced. Design, shrubbery trimming, weed removal, mulching, potting, summer clean-up. Houseplant services also available. Call Greg at (240-994-5258). (gmarinik@gmail.com). References provided.

CLEANING SERVICES

R&G CLEANING SERVICES – Small, family-owned business catering to you and your household needs. Friendly, reliable and trustworthy with many years of experience. Reasonable rates and flexible hours. Licensed and insured. Help with household organization. Free estimate with appointment. Call (301-442-5032).

UNITED CLEANING GROUP has been a trusty cleaning company used by several Leisure World members over the past 3 years. Call us for your free estimate today! We offer both apartment and home cleanings, garden work and power-washing services. We are extremely flexible: 7 days a week to accommodate your schedule. Give us a call at (240-498-2748) and/or (301-881-0695). We hope to hear from you soon!

MARIA’S HOUSE CLEANING, free estimates, strong references, good rates. Experienced worker in LW for eight years. Call Maria (240-694-6547).

CARE DRY CARPET CLEANING. Experience the difference. Host dry extraction system. Green, clean and dry in 30 minutes. Water damages wood flooring under your carpet. Choose dry cleaning. Call Mike Gonsalves, owner/operator (301-309-9398).

HOUSE CLEANING. Very thorough, reliable, many years of experience, excellent work at a lower cost than maids companies. References provided upon request. Call Gloria at (301-383-3868).

COMPUTER HELP

COMPUTER SERVICES – Problems with your PC or Network? Computer Systems Engineer will come to you with help. Home, Business. Call David G. (301-642-4526).

A+ COMPUTER SERVICES. Free in-house diagnostic of your computer, printer, or basic set-ups. A+ certified, virus removal, back-up, and retrieve important data, photos, and music. Have served over 700 clients in Leisure World. Also will teach lessons on Microsoft Office and basic computer skills at your home. Alex Nowrouzi, (301-312-2277). I reside in Leisure World.

COMPUTER LESSONS / SERVICES – Need help with your computer or other digital devices in your home? Tablets, smartphones, smart TVs and more. Computer training, new computer setup, troubleshooting. Lessons at your residence at your convenience. Learn basic computer, email, surfing the web, digital photos. Patient trainer will sit by your side and teach you in plain English – no technical talk! Shopping assistance for all electronic and computer items. Senior specialist since 1996. Call David at (301-980-5840). COMPUTERTUTOR

FIX YOUR COMPUTER – \$100 (\$50 for LW residents) any problem – Fix it or it’s free. (301-802-6633) Easy Elder Tech

PERSONAL SERVICES

PRESERVE YOUR FAMILY MEMORIES! Don’t let your precious photos be forgotten or fade over time. I’ll digitize your photos, slides, and mementos so they can be easily shared with friends and family. Once they’re scanned, I can label the photos to identify the people in them, or bring your photos to life in a memorable DVD slideshow. Call Kim at Virtual Computer Services, (301-438-3140).

TIRED OF POLISHING your silver? Turn it into cash, which does not tarnish. I will come to your home and give you a free evaluation of what I can pay. I buy all gold and silver jewelry, including broken pieces, all sterling silver, gold and silver coins, gold watches, etc. I am licensed with both Maryland and Montgomery County (lic. #2327). Gold 4 Good pays an additional five percent to all sellers who are veterans of the U.S. Army, Air Force, Navy or Marine Corps. And we extend the same courtesy to their spouses. We

honor our servicemen (and their spouses). Gold 4 Good is a Maryland licensed precious metals dealership, not a pawnshop or private home-based business. If you decide to sell, I can buy your items at that time, but there is no obligation. Call Bob, Gold 4 Good, 8241 Georgia Ave., Ste. 100, Silver Spring, MD 20910 (240-938-9694).

DAHLSTROM SENIOR SUPPORT SERVICES. Assistance with senior care and the care of seniors’ pets. Safe/reliable door-to-door transportation as needed. Assistance with pet care. Dog walking and pet sitting as needed. Transportation for grooming/ vet appointments. I’m a 57-year-old semi-retired doctor, Leisure World resident. Bonded, insured, outstanding Leisure World references. Call Carl (410-499-9362).

HOUSE CALLS LLC. Beth Albaneze, CTRS, CPRP, owner. We come to your home for your convenience when faced with acute or chronic life issues. All our services are under one umbrella with a variety of professionals to choose from: counselors, advocates, resource experts, life coaches, recovery specialists, recreation therapists, insurance advisers. Contact Beth at (301-346-6732) or (callingonbeth@gmail.com). Web: (www.callingonbeth.net).

DIAL A HAIR DAY. Mobile hair and nail stylist. MD-certified, NYS-certified. 15 years’ experience. Don’t leave home – I’ll come to you. Looking good makes you feel good. Call Tiffany for appointment. (646-400-8154).

KOMPANION KARE has openings! After 13 years of helping seniors, LW resident Stephanie Sidella has current openings for new clients. Need companionship, driving, light housework or cooking help? This Wellness Consultant has years of experience with first aid, CPR and understanding medical terminology. Contact Stephanie at (301-922-5080) or (ssidella@verizon.net).

NOTARIES

NOTARY, residing in Leisure World. I offer my service free of charge to Leisure World residents. Can come to your home if needed. (301-379-9694).

PET CARE

DOG WALKING SERVICE – Affordable rates. Responsible and dependable Leisure World resident who is available to walk your pet. Please call (301-598-3454) for more information.

CAT SITTER: 5 years’ experience cat-sitting for LW residents. Short- or long-term, day-trip or week’s vacation. Feeding, litterbox, playtime, cuddle time. References on request. Mary Beth (240-558-4013).

DOG OR CAT SITTING. Your home or mine. Leisure World resident. Have references. Call (301-598-1664).

DONATIONS WANTED

HOUSING UNLIMITED, INC is a non-profit organization that provides housing for people in mental health recovery. We accept furniture and housewares that are in good condition to furnish our homes. We do pick up. The Housing Unlimited office is (301-592-9314). Thank you.

WANTED: CAR DONATIONS. Support MCPS students by donating your car. Write off up to Fair Market Value! (www.Cars2donate.org) or (240-740-2050).

BOOK DONATIONS WANTED for the American Association of University Women (AAUW) Annual Spring Book Sale in Gaithersburg. To support local scholarships for women and mentoring program for girls and women. Fiction and non-fiction, hardback and paperback, audio books, DVDs. Art, kids’, cooking, foreign languages, gardening, history, mystery, sci-fi, science, women’s studies, African-American & Jewish interests, etc. Pickups can be arranged in and near Leisure World. For more information call Liz at (301-840-1258).

HELP WANTED

PROFESSIONAL TYPIST needed for infrequent tasks. Please call (301-565-2917).

ACTIVITY OPPORTUNITIES

EXPERIENCED MAH-JONGG player looking to start a friendly daytime game with flexible hours. Call Diane at (301-706-8141).

MOVIES AND MUNCHIES. Are you looking for something fun to do on a Saturday or Sunday afternoon? How about catching a movie at AMC Wheaton once a month and enjoying a nosh after! No discussion, no analysis, just a fun afternoon at the movies with new friends! If you’re interested, please email me at (susan.krupka@gmail.com) or give me a call at (240-446-0975).

Looking for TENNIS AND/OR PICKLEBALL partner/s for evening hours. I prefer to play at Olney Manor Rec Center with many lighted tennis courts. Please reply to Helen: (HLEE555@GMAIL.COM) or text to (240-817-4213).

VOLUNTEER OPPORTUNITIES

MAKE A DIFFERENCE in a family’s life. Habitat for Humanity ReStore needs volunteers to work in its ReStore (Rockville or

Silver Spring), especially daytime volunteers who can take a regular shift of three to four hours. Shifts typically are 9 a.m.-1 p.m., 1-5 p.m., or 3-6 p.m. Email (alena.biagas@habitatmm.org) or call (301-990-0014 x 16) if you are interested in volunteering.

VOLUNTEER WITH REPRESENTATIVE PAYEE! Representative Payee helps low-income persons with disabilities manage their finances. Each volunteer is matched with a client who needs help with budgeting, paying routine bills and keeping track of financial matters. If interested in volunteering, contact the Volunteer Coordinator (301-424-0656, ext. 541) or (volunteer@mhamc.org).

VOLUNTEER AS A HOTLINE CALL COUNSELOR with the Montgomery County Hotline! The Montgomery County Hotline is a 24-hour, seven day a week confidential service. Counselors provide supportive and confidential listening; crisis prevention and intervention; and give information, referrals and resources. Contact (volunteer@mhamc.org) or (301-424-0656, ext. 541) if interested.

MUSEUM GUIDES – at the Montgomery County Historical Society. Work two weekday afternoons or one weekend afternoon per month from noon to 4 p.m. Receive on-the-job training on local history and museum interpretation. Also receive special admission to programs and a 20% discount in the Museum Shop. Contact Amada Elliott, Education & Outreach Coordinator, (301-340-6534) or (aelliott@montgomeryhistory.org).

MEALS ON WHEELS is looking for caring and dedicated volunteers to deliver meals to homebound and disabled individuals in the Leisure World area. Service area includes: Leisure World, Olney, Wheaton, Sandy Spring. Please contact Emily Trotter at (443-573-0925) or email (trotter@mowcm.org).

MEALS ON WHEELS (MOW), which runs out of the Inter-Faith Chapel site, needs more volunteers to deliver meals. If you have or know someone who has one and a half to two hours every other week or one time a month and might be interested in serving in this capacity, please contact (410-730-9476).

KOSHER MEALS ON WHEELS, sponsored by JSSA, needs volunteers to deliver nutritious meals to homebound seniors. Volunteers will pick meals up at the Hebrew Home in Rockville and deliver them to seniors in Montgomery County. Schedule is flexible. Call Diane Hays-Earp at JSSA, (301-816-2639).

THE SENIOR CONNECTION needs volunteers who live in

the 20906 zip code area to drive seniors to medical appointments and help with grocery shopping. Schedules are flexible and just two to three hours a month can make a difference! Training and liability coverage are provided. Call (301-942-1049) or contact (volunteer@seniorconnectionmc.org) to learn more.

HELP A CHILD! In just one-two hours a week you can make a difference in a child’s life. Volunteers provide friendship and encouragement, help with reading, offer homework assistance, and engage in crafts and cultural activities at schools near Leisure World. For more information, contact Interages at (301-949-3551) or (interages@AccessJCA.org).

BLANKETEERS — Love to knit, crochet or quilt? Project Linus donates handmade blankets to Montgomery County children needing comfort. Contact (projectlinus.mc@gmail.com) for more info, free yarn and fabric, and blanket requirements.

ENGLISH AND MATH TUTORS needed! The Literacy Council of Montgomery County offers one-on-one and small group tutoring, intensive English classes and a new GED program. No experience necessary. We provide materials and training. Sign up online at (www.literacycouncilmcmd.org) or call Ashley France at (301-610-0030).

PET FOSTERS. Seniors needed by AARF (Animal Allies Rescue Foundation) for new program in Montgomery County. Temporarily care for a dog or cat until a permanent home can be found. For more information contact Wanda Mayhew, (301-275-0585) or (www.animalalliesrescue.org). Follow on Facebook. AARF is 501(c)(3) all-volunteer non-profit.

FREE BOOKSTORE seeks volunteers, donations. Velocity of Books opened the first all-free bookstore in Montgomery County at Westfield Wheaton by Hollywood East Café, near Metro entrance. Store open during mall hours. Thousands of books available for kids and adults. To volunteer: (https://volunteersignup.org/7APPQ). Book donations up to five boxes at a time may be brought to the store. Larger donations may be picked up; email (VelocityofBooks@gmail.com).

NOTICES

KEEPING SENIORS SAFE — KSS. Morton A. Davis, coordinator and resident of Leisure World is available to discuss theft prevention, driving and shopping habits, frauds, home safety inspection and property crimes to

any organization. The program is part of the Montgomery County Police Department Volunteer Resource Section. Morton can be reached at (240-706-1850) or (mortonadavis@comcast.net).

WANTED

FAST CASH FOR USED CARS — Big dollars paid for your used car! Over 43 years’ experience serving Leisure World. Please call; available 24 hours. I will come to you. Cash or cashiers’ check at your request. I can also help with your new car purchase, any make or model! MD Dealer #U2927. Call Marty Salins (301-325-1973).

WILL BUY MILITARY, WWII, WWI, Civil War memorabilia items. Uniforms, weapons, helmets, photos, medals or any other items associated with U.S., German, Japanese or other military history. Call Dave (240-464-0958) or email (obal7@aol.com).

CASH FOR JEWELRY: gold, silver, costume, diamonds, coins (including foreign), watches, stamp collections. (theatticllc.com) Gary (301-520-0755).

TURN YOUR STERLING SILVER and old gold jewelry into cash and do something good for yourself. Gold 4 Good (8241 Georgia Ave., Ste. 100, Silver Spring, MD 20910) buys gold and silver jewelry, including broken pieces, all sterling silver, gold watches and gold and silver coins. I will come to your house and give you a free evaluation of what I can pay. Gold 4 Good pays an additional five percent to all sellers who are veterans of the U.S. Army, Air Force, Navy or Marine Corps. And we extend the same courtesy to their spouses. We honor our servicemen (and their spouses). Gold 4 Good is a Maryland licensed precious metals dealership, not a pawnshop or private home-based business. If you decide to sell, I can buy your items at that time, but there is no obligation. Licensed with both Maryland and Montgomery County (lic. #2327). Call Bob (240-938-9694).

CASH FOR RECORDS, CDs, and tapes. Best price guaranteed. Free appraisals. All types of music, 33, 45, 78 and CDs. Call Steve (301-646-5403) or email (Stevebuysrecords@gmail.com). Will make house calls.

BUYING JEWELRY, OLD COINS, antiques, gold, silver, old art, old toys, military items, wristwatches, pocket watches, fountain pens, etc. Tom (240-476-3441).

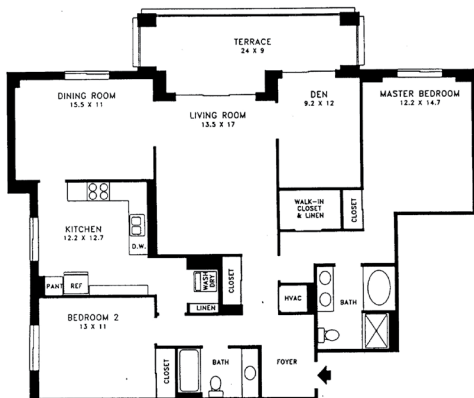
CASH FOR OLD COINS. Local, private collector. Buying coins, jewelry, silver, gold. (301-639-4245).



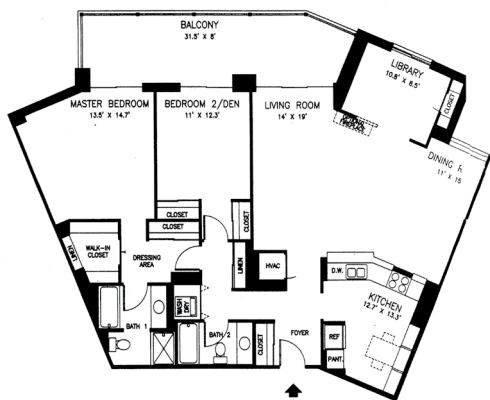
Stan Moffson

#1 In LISTINGS In Leisure World®

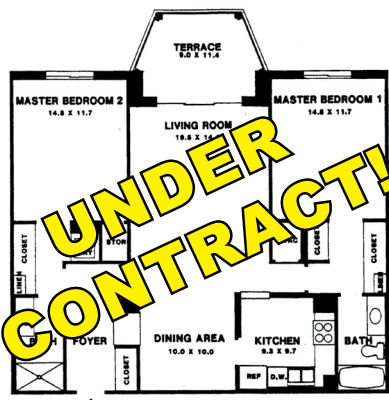
Authorized Leisure World® Specialist



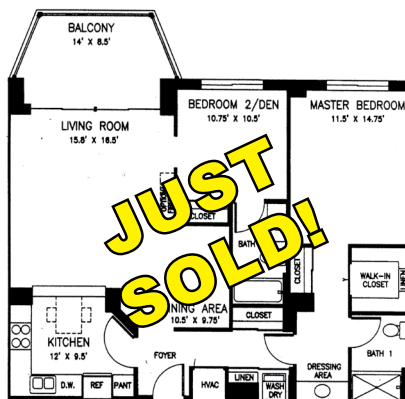
"F" Model - Villa Cortese - \$410,000
2 BR + den, 2 FB, 1510 sq. ft., 24 ft. enclosed balcony, table space kitchen, garage space.



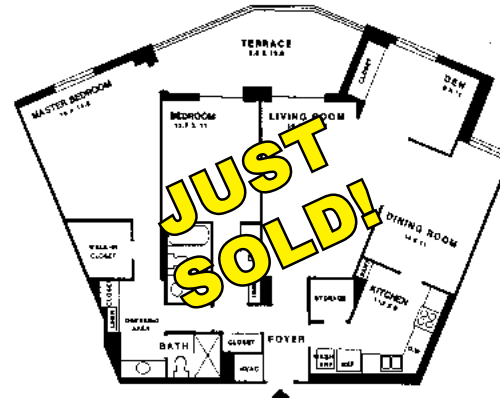
"KK" Model - Overlook - \$449,000
2 BR + den, 2 FB, 1510 sq. ft., garage space included.



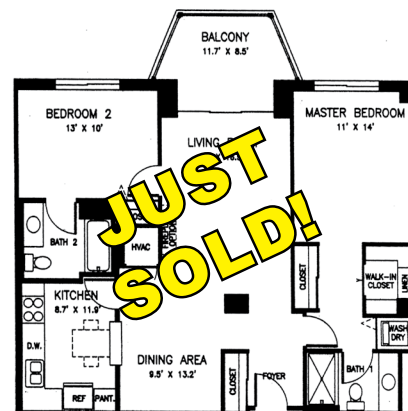
"G" Model - Fairways - \$219,000
2 BR, 2 FB, 1195 sq. ft., Garage space included, immaculate condition.



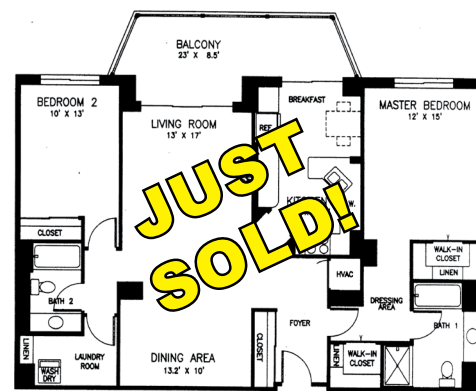
"C" Model - Overlook - \$235,000
2 BR, 2 FB, 1090 sq. ft. Hardwood floors, freshly painted, garage space included.



"K" Model - The Greens - \$249,000
2 BR + library, 2 FB, 1520 sq. ft. Garage space and storage room. Sold as is.



"B" Model - Overlook - \$225,000
2 BR, 2 FB, 1035 sq. ft. Freshly painted, wood floors, new carpet both BR, garage space.



"G" Model - Overlook - \$359,000
2 BR, 2 FB, 1325 sq. ft. Freshly painted.

When Experience Counts

CALL STAN MOFFSON

#1 Listing Agent In Leisure World

301-928-3463

OR

JANICE FIFE

301-254-5825

They will get the job done!

Experience for yourself why Stan is #1 in Leisure World®

Call 301-928-3463 and ASK for STAN!



Email: stanmoffson38@gmail.com **Office:** 301-681-0550
Web: www.stanmoffson.com

