

Leisure World News

OF MARYLAND

July 19, 2019 • Published Twice a Month • residents.lwmc.com • leisureworldmaryland.com

Parade Panache



Members of the Gilbert and Sullivan Society ride in patriotic style at the community's annual July 4 parade. This year's parade featured several new elements, including two celebrity guest speakers and "appearances" by some of the nation's historical figures. Photo by Fred Shapiro

Board Approves Comcast Contract

by Stacy Smith, Leisure World News

The Leisure World Community Corporation (LWCC) board of directors authorized general manager Kevin Flannery to enter into a telecommunications services agreement with Comcast on LWCC's behalf at a special open meeting on July 16.

The eight-year agreement will provide both cable TV and high-speed, broadband internet service to all homes in Leisure World at below market price beginning Wednesday, Jan. 1, 2020.

The new agreement also includes significant upgrades

to the cable and internet infrastructure of the common areas of the Trust and throughout the community, with construction on these areas beginning this month.

Equipment installation in residents' homes is expected to begin some time in October, at which time a Comcast representative will be on-site three days a week to field residents' questions.

With the board's approval of the contract, management also plans to develop a strategy for communicating further details to the community and educating residents about implementation of the new services.



Renewed at the Library

New Computers and Software Keep Library Up to Date

by Kimberly Y. Choi,
Leisure World News

Patrons to the library in Clubhouse I may not notice anything different, but the library is set to reopen on Monday, July 22, backed by dependable, upgraded technology.

While the library's door has been locked since July 8, the Rossmoor Library Guild and its president, Pamela Burdick, working with Leisure World's senior business and systems analyst Dave Merritt, have been replacing the library's computers with more powerful machines and transferring

existing data to a new software system called LibraryWorld. The Guild's volunteers are getting themselves familiar with the new system.

The project had its start at a Guild meeting, when someone brought up that the software they were using was about a decade old. Guild members liked the prospect of a more modern program that could enhance the library for its users.

Setup Successful

Merritt plugged in the first of the front-desk computers on July 11. He spent about an hour setting up each computer

off-site, installing the software.

Once the computer was running, and as a finishing touch, Burdick moved the library software icon to the center of the desktop so that it would be convenient for the library's personnel.

Three new business-grade computers supplant the three existing computers in the library: two in the front for checkout and one in the back for administrative purposes such as cataloguing new books.

"That is a power supply," Merritt explained to Burdick when she examined a part of the new machine. Merritt chose reliable machines that

the Guild could sustain with little effort.

"It's a much simpler platform," he said.

He and the Foundation of Leisure World managed to purchase the three new computers very inexpensively for their quality, according to Merritt. The computers run Windows 10, the latest Windows operating system, and use solid-state drives for longevity and low maintenance.

Installation Complete

LibraryWorld replaces the FileMaker Pro database

➤ to page 2

INSIDE	Governance & Information	6	Sports, Games &	
	Thoughts & Opinions	8	Scoreboards	34
	Events & Entertainment	10	Classes & Seminars	38
	Movie Schedule	15	Calendar of Events	41
	Health & Fitness	16	Governance Meeting	
	Clubs, Groups &		Schedules	41
	Organizations	18	Classifieds	44
	Club Trips Listing	32		



Misplaced or mistakenly discarded the strategic planning survey, or haven't completed it yet?
See page 3 for information.

Library

◀ from page 1

that the library used to keep records.

It's important to Burdick that the data are kept safe. With the switch to the new system, the data moved from their old storage place – the library's computers – into "the cloud." This means the data are kept on external servers – which, in LibraryWorld's case, are in California – and the computers access the data through the internet.

Data are less likely to be lost through cloud storage, as it doesn't rely on the library computers' functioning. Still, Burdick was concerned: "I emailed [LibraryWorld] and said, 'What about this earthquake?'" The company assured her the library's inventory and checkout information will be safe on their machines, and they make backup copies of their data regularly.

The Guild easily transferred most of the library's data into the new system, but the checkout information had to be re-input manually, and individual users' checkout history is not transferred.

Upgrades

LibraryWorld grants the library many new abilities. Now, for example, it is possible to put a book on hold,

when the previous system had no provision for it.

One volunteer has the tedious task of laboring through the list of patrons with overdue books and making a phone call to each one. LibraryWorld renders the job easier by allowing for automatically sending messages to those patrons who have email. Guild members are discussing future projects they could pursue using the software's capabilities.

Switching to the newer, feature-rich system is not costly; indeed, it saves money. Formerly, the E&R Department paid \$100 every month for technical support, while the new system, including both the software license and technical support, costs \$500 a year.

End Users

The rest of the library's couple weeks of closure was spent getting the library volunteers, who number over 50, comfortable with the new software through a training session.

During Burdick's career, she wrote Unix scripts and taught people how to use computers. Now, again, she was pointing to a projector screen, explaining the parts of the interface: how to check out or return a book, how to tell how large a fine a patron owes, how to search the data-



After installing new software, senior business and systems analyst Dave Merritt and Rossmoor Library Guild president Pamela Burdick test it out by scanning a library book in the Clubhouse I library July 11. Photo by Kimberly Y. Choi, Leisure World News

base for imaginary patron, "Ms. Lettuce."

Mary Vaughan, a Guild volunteer, said upon finishing her training session that LibraryWorld is more convenient than the old program; the various tasks are more easily accessed, and those tasks take fewer steps.

While Vaughan has been using her iMacs and other computers for work and entertainment for a long time, she said not all of her fellow volunteers are computer users outside of the library, and often volunteer not because they have prior experience using software applications but because they love books.

Regardless, "I would say almost anybody who works at the library feels confident [using the computer], and I think they feel good about doing it," she said. Many volunteers become more at ease with computers through their time at the library.

Join the Guild

The library is seeking more volunteers; the Guild prefers having three volunteers for each shift. To sign up, residents can fill out a form available at the library's front desk.

The library is open Mondays 1-4 p.m., Tuesdays through Fridays 10 a.m.-4 p.m., and Saturdays 10 a.m.-1 p.m.

**ASPEN HILL
EXXON**
301-871-6777



Auto Care

www.aspenhillexxon.com
14011 Georgia Ave.

Owned and Operated by BENNY Since 1980 "or ask for my son DAN."
Friendly, personal and professional service!

Free transportation home and back when you leave your car for service!

• Complete Automotive Maintenance Service & Repair • Most Makes & Models
• Two Years/24 Month Warranty • Factory Scheduled Maintenance

Auto Service Discounts

Oil Change Service Special - \$29.95

5 Qts of synthetic blend 5W/30 oil

Oil Filter & Lube ♦ Multi-Point Inspection

Most cars, plus tax & disposal fee

Full Synthetic Extra

Present this Coupon with Incoming Order. Expires July 31, 2019

Maryland State Inspection Station

Leisure World News OF MARYLAND

An official publication of the Leisure World Community Corporation, Leisure World News is published twice monthly by Leisure World Staff in collaboration with the Communications Advisory Committee.

Leisure World News is published for the benefit of Leisure World residents. Its mission is to provide news and information about community governance and other relevant issues, events, and activities, and to provide residents a forum for their opinions and an opportunity to contribute articles of general interest. All matters concerning the Leisure World News will be decided with this mission in mind.

Leisure World Staff

Maureen Freeman,

Director of Communications

Stacy Smith, *Senior Editor*

Kathleen Brooks,

Senior Communications Associate

Kimberly Y. Choi, *Communications Associate*

Cassandra Chisholm, *Graphic Designer*

Editorial: lwnews@lwmc.com

Advertising: lwnewsads@lwmc.com

301-598-1310

Communications Advisory Committee

Alan J. Goldstein, *Chair*

Bernie Ascher, *Vice Chair*

aclwn@lwmc.com

Resident Contributors

Mary Catherine Bibro,

Rincy Pollack, Arthur N. Popper

and Marilyn Boesch

Leisure World News of Maryland reserves the right to reject or discontinue any advertisement believed to be not in the best interest of Leisure World.

We will not knowingly permit a dishonest advertisement to appear nor do we guarantee the reliability of advertisers.

Leisure World Wants to Hear From You

SSPC Urges All Residents to Complete Strategic Planning Survey

by Leisure World News

Have you ever wanted to contribute to your community in a meaningful way from the comfort of your own home?

By completing the strategic planning survey, residents can do just that: Sharing information about who they are and what they want out of life at Leisure World will help residents invest in the community's long-term future.

The survey takes about 30 minutes to complete, according to the Special Strategic Planning Committee (SSPC), and gives each resident – both owners and tenants – a chance to “talk” about life at Leisure World – its amenities, services and any other aspects of the community they feel are important.

Data from the survey will be analyzed by experts in strategic planning so that all current residents – both long-time and

newly arrived – can become a part of Leisure World's future.

Residents are asked to fill out and return the paper copy of the survey that was mailed to them about a month ago, or complete it online at (residents.lwmc.com), by Wednesday, Aug. 7.



Need a Copy?

Residents who misplaced or mistakenly discarded their copy of the survey can pick up a

new one at the Administration Building's front desk or either clubhouse E&R office during office hours.

Residents must bring their Leisure World ID and a state-issued ID, such as a driver's license or Social Security card, to pick up a new survey, as well as provide their signature.

Residents who provide these items will receive a paper copy of the survey along with a preaddressed envelope in

which to return the completed survey.

Survey Available Online

The survey is also available to complete via the resident website, (residents.lwmc.com). Sign into the website and click on “The Strategic Planning Survey” under the “Your Community” dropdown arrow. The survey link is located at the bottom of the web page.

Residents who haven't signed up yet to use the website can do so at any time. Go to (residents.lwmc.com) and click on either “sign in” in the center of the page or “resident sign in” at the top of the page.

Choosing either option takes prospective users to a Sign In page, where they click on “Sign Up Today” and fill out a four-step, self-explanatory form with their name, address and other basic information.

Contact

For questions about the strategic planning survey, contact the SSPC at one of the following:

- Email – (sspc@lwmc.com)
- Phone – (240-560-5794)
- Mail – (SSPC attn.: Ernesto Castillo, 3701 Rossmoor Blvd., Silver Spring, MD 20906)

OFFICE HOURS

Administration Building	Mon. to Fri., 8:30 a.m.-5 p.m.
Clubhouse I E&R Office	Mon. to Thurs., 8:30 a.m.-8 p.m. Fri., 8:30 a.m.-9 p.m. Sat., 10 a.m.-9 p.m. Sunday, 10 a.m.-6 p.m.
Clubhouse II E&R Office	Daily, 8 a.m.-9 p.m.

Aug. 1: Red Wiggler Market Returns

by Leisure World News

Get your taste buds ready; Red Wiggler Community Farm returns to Leisure World for five days this summer to sell locally grown and harvested vegetables and fruits.

Sponsored by the Inter-Faith Missions Committee, the market is held on Thursday, Aug. 1, 8, 15, 22 and 29, from 9 a.m.-noon in The Inter-Faith Chapel parking lot.

Certified organic vegetables, including squash, tomatoes, beans, beets and peppers, as well as corn, peaches and fresh-cut flowers, will be available for purchase. Cash is preferred, though credit cards are accepted.

Red Wiggler is a nonprofit, sustainable 12-acre farm located in Montgomery County where people with and without developmental disabilities come together to work, learn and grow healthy food.

To learn more about the farm, visit (www.redwiggler.org).



Photo by Leisure World News

Rediscover Our Assisted Living

For almost two decades, Marian Assisted Living has provided focused, personalized senior care. And our award-winning community continues with this mission. Nestled in the heart of the vibrant Brookeville neighborhood of the Reserves at Manor Oaks, we're here for today's needs and tomorrow's. **Learn more, call or visit us today.**

New Neighbors. Same Neighborhood.

Marian Assisted Living
Minutes from Leisure World
19109 Georgia Avenue
Olney/Brookeville
301-570-3190



Victory Housing
Is A Non-Profit
Organization
Serving Seniors
for More Than
30 Years



Exclusive
Leisure World
Special!

VictoryHousing.org

Building On a Strong 'Foundation'

Longtime Leisure World Organization Challenges its Status Quo

by Stacy Smith, Leisure World News

The Foundation of Leisure World is planning to broaden its donor base by holding fundraisers, creating pilot programs for new services and soliciting donations from businesses and organizations that have a relationship with the community.

It's a change in creative direction that Foundation board of directors president Marian Altman and member Alan Goldstein are eager to leverage.

Spurred on by the enterprising spirit of some of its newest members, the Foundation's board of directors created and approved a strategic plan for the organization last year and is in the process of creating a donor database and annual fund. But the organization is still in need of board members to help with these initiatives.

"One of the things we really want to do is get more widespread participation," Goldstein says, adding "when people donate to the Foundation, now they're engaged because they have some skin in the game."

Goldstein joined the Foundation in 2018 and recently completed a Montgomery College online fundraising course to learn how to better serve the Foundation.

He is in the process of addressing representatives of Leisure World's high-rise buildings, and is hopeful many of them will help promote the Foundation within their mutuals by encouraging their residents to consider making a financial contribution to the organization.



Everyone Benefits

For nearly 40 years, the Foundation of Leisure World has helped clubs and groups improve the quality of residents' lives in big ways and small

ways through monetary donations provided by Leisure World's residents.

The Foundation uses these donations to furnish items that are not covered in the community's budget, to subsidize events or to provide seed money to fledgling Leisure World clubs and organizations.

Residents who've ever used a computer or printer in the Computer Learning Center, heard a performer play the baby grand piano in Clubhouse II or enjoyed a performance by The Fabulous Hubcaps or Still Surfin', a Beach Boys tribute band, to name but a few, have benefited from the generosity of their neighbors and friends



The Rossmoor Art Guild recently purchased new, ergonomic drawing tables (right) using a grant provided by the Foundation of Leisure World. The new tables will replace the well-worn tables (left) in the studio in Clubhouse I. Photos by Stacy Smith, Leisure World News



who have donated to the Foundation.

Wishes Granted

Among the many clubs and groups who've benefited from the Foundation is the Rossmoor Art Guild, a group that recently decided it was time to do something about the art studio's lack-luster conditions.

The studio's once sturdy easels had become decidedly rickety in recent years, and its desks and chairs, built decades ago by members of the Wood Shop Users Group, were also showing wear.

With the help of a small grant provided by the Foundation, the Guild has been able to buy new, ergonomic furniture and art accessories this year.

"We're kind of like kids in a candy store right now," says Guild president Ann Bolt. "I

don't think we have ever had anybody give us anything."

Board Members Wanted

The Foundation of Leisure World's board of directors meets on the second Wednesday of the month at 9:30 a.m. in Clubhouse II. The Foundation is still accepting applications for several open board member positions.

For more information, call Marian Altman, president, at (301-438-1357), or place a resume and short cover letter in the Foundation's box in the Clubhouse I E&R office.

For more information about the Foundation of Leisure World, including details on how to make a donation or apply for a grant, visit (residents.lwmc.com) and click on "Foundation of Leisure World" under the "Your Community" dropdown arrow.



Mark C. Wimsatt
Painting

Interior
Free Estimates

Leisure World References
★ Special Discounts ★
for Moving in or Moving out

SENIOR DISCOUNTS!

301-828-6500

Serving Leisure World for
over 35 years.

MHIC 10165 Insured

WILLSON'S

Leisure World Renovations

Providing renovation services exclusively for residents of Leisure World!

**Our Showroom at
Physical Properties is Now Open!**

Come see our impressive selections of:
**Kitchen Cabinets • Stone Tops
Vanities • Flooring • Windows**

Full Time Staff On Site
Visit us today!

Call our showroom
301-598-1348

or call me directly
Brian Willson
President
301-252-2199
brian.willson@yahoo.com

PARTNERING FOR SUCCESS

Enjoy the benefits of our combined strengths
to lead you through a smooth and winning transaction!

Specializing in
Retirement Living

Ask us about our
Metro Expertise too!



Over 14 Million
Settled in
Listings and Sales
in 2018!

All properties
advertised are our
own transactions!

SUDHA BAXTER

RE Licensed
MD & DC
202-368-8536

SUE HEYMAN

Former Mont. Co. Teacher
Seniors Specialist
MD RE Licensed
301-580-5556

RICK WINKLER

CPA
RE Licensed
MD & DC
301-404-3105

Weichert Award Winning Top Producers • Community Resident and Community Investors
Expanded Coverage for Buyers and Sellers in DC and MD • Awarded for Excellent Client Service
Sue is #1 Lister in the Regency Mutual 25 • Top 1% of Agents Nationwide



NEW LISTING! \$150,000

Hampton Deluxe
Renovated 2 BR, 2 FB,
CONDO garden apt. 1200 sf.



NEW LISTING! \$485,000

Villa Cortese New Building "Q"
Barely lived in, luxury 2 BR, den,
2 FB, green view, garage space
incl., upper \$400's, 1574 sf.



NEW LISTING! \$499,999

Villa Cortese New Building "T"
3 BR, 2 FB, upgraded appliances
& floors, Garage space, 1560 sf.



LISTING UNDER CONTRACT! \$115,000

Hampton
Renovated 2 BR, 1 FB
co-op garden apt. 1200 sf.



LISTING UNDER CONTRACT! \$212,500

Turnberry "C" Model
2 BR, 2 FB Fresh paint,
new flooring, high ceilings,
gas heat, open kitchen, 1093 sf.



LISTING UNDER CONTRACT! \$468K

Elegant, Updated Patio Home
Turnkey, 2 BR, 2 FB, family room
w/ fireplace 2 patios,
2 car garage, 1470 sf.



LISTING SOLD! \$164,500

Berkley Townhouse
2 BR, 1 FB, 2 HB, Laminate HWD,
new carpet & fresh paint. 1600 sf.



LISTING SOLD! \$215,000

Fairways South "GG" Model
Garage spc, 2 BR, 2 FB, lower flr,
contemporary updates, 1195 sf.



LISTING SOLD! \$300,000

Greens "K" Remodeled + Gar
2 BR, Den, 2 FB, stunning kit. &
BAs, exceptional views, 1480 sf.



LISTING SOLD! \$305,000

Fairways "P" Model
3 BR, 2.5 BA, enclosed balcony,
TLC touches needed, 1530 sf.



LISTING SOLD! \$350,000

"Cabot" Model Patio Home
3 BR, 2 FB, kit & BA updates,
fenced patio, 2 car gar. 1193 sf.



LISTING SOLD! \$719,000

The Regency "Falconcrest"
4 BR, 3.5 BA, new carpet & paint,
granite & SS appliances, 3322 sf.

CALL US FOR FREE:
CONSULTATION, COMPETITIVE MARKET ANALYSIS,
& COMMUNITY BOOKLETS

Sue Heyman: 301-580-5556 sueheyman@aol.com
Rick Winkler: 301-404-3105 rwinkler@weichert.com
Sudha Baxter: 202-368-8536 sudhabaxter@yahoo.com
Weichert Realtors: 301-681-0550 office

GOVERNANCE & Information

Aug. 12: AARP Safe Driving Course

by Leisure World News

The E&R Department is sponsoring an AARP Safe Driving Course on Monday, Aug. 12, in Clubhouse I from 9:45 a.m.-3 p.m., with a one-hour break for lunch. You must pre-register for the course, which is for residents only. Please bring your Leisure World ID. A check payable to AARP, \$15 for AARP members and \$20 for non-members, is required at the time of registration. (Please note: AARP members must show a current membership card to receive the AARP discount.) Register in the E&R Office in Clubhouse I beginning at 8:30 a.m. on Tuesday, July 23. The number of participants is limited to 25, so plan to register early. Participants should bring their driver's license and a pen or pencil to the course. If you have any questions, contact the E&R Office in Clubhouse I at (301-598-1300).

■ Security and Transportation Advisory Committee

No Passing Allowed Along Boulevard

by Joyce Temple

The Oxford English dictionary describes "boulevard" as a wide street, typically lined with trees. It is of French origin, and it might make you think of the Champs-Élysées in Paris. The fact that our very own Leisure World Boulevard is wide and spacious leads people to believe that it is meant to accommodate more than one lane of traffic, but it is not. In many places along the Boulevard, people will see cars parked at the curb on the right side. They are legally parked. The danger comes when a driver wants to overtake the car in front of him or her and passes on the right side, thinking there is plenty of room. Then, suddenly, cars parked directly ahead force that driver to return to the center. Remember: There is only one lane of traffic in each direction on the Boulevard, and passing is not allowed.



Photo by Leisure World News

GOOD TO KNOW: LEISURE WORLD'S POST OFFICE

- Located in the Administration Building
- Open Monday through Friday, 8 a.m.-2 p.m.
- Offers stamps, mailing boxes and certified and insured mail services; does not offer Express or International Business services
- Payment by check or cash only



Photo by Leisure World News

Dial 301-598-1313
for recorded Daily Events

2019 Broadcast Schedule - Channel 974

Executive Committee meetings are broadcast on Wednesday, Thursday and Friday the week after the meeting. Board of Directors meetings are broadcast on Monday, Wednesday and Friday the week after the meeting. All broadcasts are at 4 p.m. and 7 p.m.

Executive Committee Meeting The July 19 meeting airs on July 24, 25 and 26.	Board of Directors Meeting The July 30 meeting airs on Aug. 5, 7 and 9.
--	--

Group Email Addresses

Residents wishing to contact Leisure World Management or a specific department, the LWCC Board of Directors, or the Executive Committee may send an email to the appropriate email address listed below. It will automatically be forwarded to all members of that group who have an email address on record. Messages to any of the email groups should pertain only to the management and operation of Leisure World trust properties, services, or activities. Please do not send emails to multiple addresses, as there will be a duplication of recipients and will not result in a faster response to your question or comment. Messages pertaining to mutuals or anything else which Management, the Board of Directors, or Executive Committee does not control should also not be sent to these groups.

- The group email addresses are:
- LWMC Management - management@lwmc.com
 - LWCC Board of Directors - board@lwmc.com
 - LWCC Executive Committee - excomm@lwmc.com
 - Administration - administration@lwmc.com
 - Communications - communications@lwmc.com
 - Education and Recreation - recreation@lwmc.com
 - Physical Properties - physicalproperties@lwmc.com
 - Security - security@lwmc.com

Faxing Available at the E&R Offices

The E&R offices in Clubhouse I and II can send faxes for residents. The following fees are per page:

Local fax	\$1.00
Long distance fax	\$1.50
International fax	\$2.00

At Clubhouse I, local, long distance and international fax services are available when the E&R office is open: Monday through Thursday

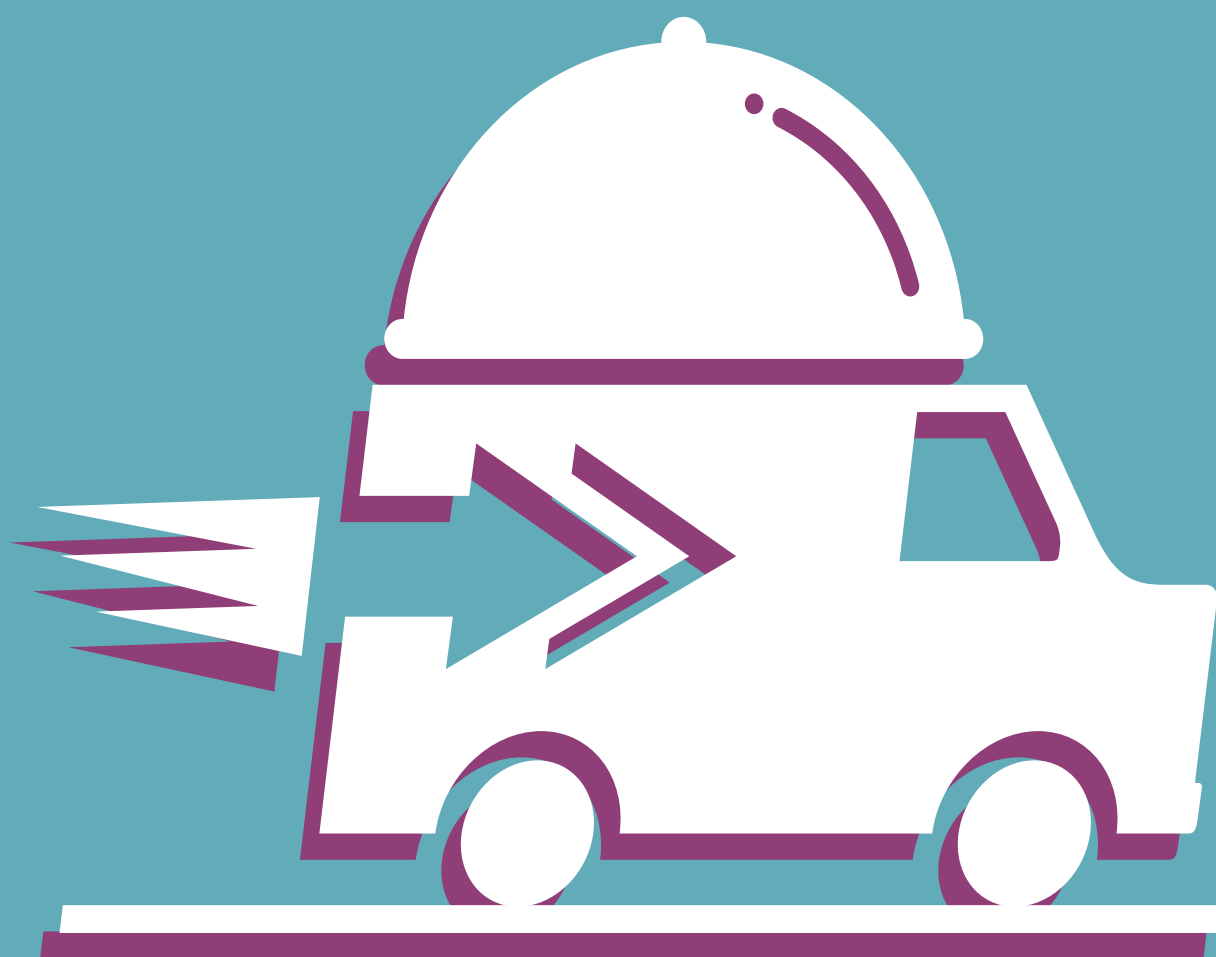
from 8:30 a.m.-8 p.m., Friday from 8:30 a.m.-9 p.m., Saturday from 10 a.m.-9 p.m., and Sunday from 10 a.m.-6 p.m. At Clubhouse II, local, long distance and international fax service is available daily from 9 a.m.-8 p.m. (excluding holidays). International fax is restricted to Canada, Puerto Rico and Mexico.
– Leisure World News

COMMUNAL GRILLS

Communal grills are available in Magnolia Park, a four-acre patch of Trust property within Turnberry Courts (Mutual 21) located next to the golf maintenance facility. Picnic tables and benches are also available, and grill usage is on a first come, first serve basis.

***Stein Room and Terrace Room
now offer***

DELIVERY
SERVICE



Available Monday-Friday from 11 a.m.-3 p.m.

No minimum order amount!

Only a \$4 surcharge for delivery.



Call 301-598-1330 to place your order.

THOUGHTS & OPINIONS: *From Our Residents*

A Few Things to Remember

Relevance: Make sure that your submission is relevant to the LW community as a whole and not to just one person, mutual, or organization.

Respect: Remember that your opinion is about ideas, not individuals, and please avoid personal attacks.

Brevity: Being concise will ensure that your opinion will have maximum impact.

Accuracy: Document all factual assertions. Opinions that are backed up with facts are more powerful, but only if the facts are accurate.

Ownership: All submissions are subject to editing but you will have the opportunity to approve the edits before publication.

Opinions are strictly those of the writers. Thoughts and Opinions is maintained by the Communications Advisory Committee.

SUBMITTING AN ITEM TO THOUGHTS & OPINIONS

1. Submissions must be emailed to aclwn@lwmc.com or delivered to the LW News Office.
2. Receipt of submissions will be confirmed by email or telephone.
3. Submissions must state the writer's name, address, telephone number, and email address, if any, but if the material is published, it will include only the writer's name.
4. LW News cannot guarantee when or if a submission will be published.
5. To view the full Leisure World News Guidelines, login to (residents.lwmc.com) and click on Documents, then select the Advisory and Special Committees folder, and click the Communications folder.



CYCLE WORKS LLC

ELECTRIC BIKES AND UPGRADE KITS

- Repairs and Tune-ups for Bikes and Trikes
- Vintage Restorations
- Mobile Bicycle Services
- Convert Your Bike With a Hill Topper Kit
- All Work Warranted



New and Retro E-Bikes, E-Bike Conversion Kits



Evo Cycle Works LLC

Vic Caldarola

13815 Arctic Ave · Rockville MD · 20853

www.Evocycleworks.com

Read Our Reviews

CALL (240) 602-8752



THE NEED FOR TREES

I just reviewed the strategic planning survey. There is a section where residents/owners can write in things we'd like to see more of in our community. I will be requesting more trees be planted, and I encourage everyone to consider the following benefits of more trees.

First, trees provide beauty, shade and oxygen. Walking around the Boulevard, I wish for more shade on these hot days. Research has shown that humans benefit from exercising outdoors more than indoors, and this is only possible if there is sufficient, deep shade. Research has also demonstrated that spending time in nature improves our mood and sense of well-being. The natural "aromatherapy" of the lemon-scented magnolias currently in bloom brightens my day every time I smell them.

Second, like us, the majority of our trees are mature. Although different varieties of trees have different life spans, it can be expected that we will lose a significant portion of our trees to disease and death within the same 10-year span. If we do not plant more trees now, our community will be much less green in the future. The emerald ash borer has already infested hundreds of our trees, resulting in their removal.

Third, more acreage with trees means less grass to mow, fertilize and spray with herbi-

cides and pesticides. This is healthier for us, our pets and the Chesapeake Bay.

Take a look at the aerial maps on Google and you will see that the immediate area outside of Leisure World has much more tree cover. Further out, Takoma Park, Maryland, has a wealth of tree cover anyone would envy. Imagine a gorgeous, wooded parkland everywhere you look in Leisure World. If that thought inspires you, write in a request for more trees when you complete the strategic planning survey.

– Kate (Katherine) Wissman

SEEING VALUE IN THE GOLF COURSE

My wife Carole and I recently purchased an apartment here at Leisure World. Because of discussions that we have seen in the Leisure World News about the value of the golf course, I am writing to explain the role that the golf course had in our decision to buy here.

Carole and I are not golfers, but the existence of the golf course played a major role in our decision to move here. We hope to learn to play, which will get us outdoors and help fill our time in retirement. None of the other communities that we discovered had a golf course. Most did have a pool, tennis courts and a fitness center.

The golf course is what distinguishes Leisure World and will help attract new residents as the baby boomer generation continues to retire. Many boomers, in all kinds of different industries, have tried golf not only for fun, but also at charity golf outings and client events.

We do not believe that the value of the golf course can be measured by the number of members who use it. In our view at least, the golf course provides benefits by helping to support the value of the investments in our homes, as today's new boomer generation is just the age group we need to attract new residents (who may well be golfers.)

– Rich Steer

NOW AT WEICHERT
LEISURE WORLD PLAZA

MAYNARD E. TUROW

Agent 20 years... Listings, Resales

**THINKING OF SELLING??
Or Friends – Relatives Buying?**

A Real Estate specialist for 20 years working exclusively in the senior market. I can answer your questions & find you your dream home. If selling, I'll get you the best price!



(C) 301-518-3834

(O) 301-681-0550



Free brochures, Comps, Layouts, Info
Direct: 301-518-3834
maynardturow@yahoo.com

“Unlimited” in more ways than one

For cash back credit card enthusiasts, the Signature Visa^{®1} card from Signal Financial delivers.



5% **unlimited cash back** on home-related purchases for the first 12 months²

2% **unlimited cash back** on all purchases, every day³

— EVEN MORE REASONS TO LOVE THE SIGNATURE VISA CARD —

Introductory 0% APR⁴ on all purchases, cash advances, and new balance transfers for the first 6 months after card activation. After 6 months, the standard variable rate, 12.00% – 14.00% APR, will apply.

Introductory \$0 fee⁵ on new balance transfers & cash advances for the first 6 months after card activation. After the intro period, a fee of 2.5% or \$10 will apply.

No annual fee.

No foreign transaction fee.

Ongoing 0% APR⁵ on new balance transfers & cash advances for the first 6 months after transfer/advance with a fee of 2.5% or \$10, whichever is greater. After 6 months, the standard variable rate, 12.00% – 14.00% APR, will apply.

Apply today

signalfinancialfcu.org/signaturevisa


signalfinancial
Federal Credit Union

¹ Member must meet credit guidelines to be approved for the Signature Visa credit card. Annual Percentage Rate (APR) for the Signature Visa credit card may vary and not all applicants will qualify for the lowest rate. The interest rate for purchases and cash advances is determined by the Prime Rate published in the Money Rates section of the Wall Street Journal. If the prime rate has changed on the last day of the quarter, your APR will change within the first fifteen (15) days of the next quarter. Minimum interest rate for the Signature Visa is 12.00%; maximum interest rate is 14.00%. Interest rates for the Signal Visa Signature consist of the Prime Rate + margin and depend on the member's creditworthiness. Rates, benefits, and fees are subject to change at any time without notice. Cash back benefits apply only to purchases made with the member's Signature Visa credit card. Member must be in good standing to receive cash back benefits. Cash back will be removed from the member's account if the qualifying purchase is returned/refunded. Cash back is credited to the member's credit card account at the end of each billing cycle.

² Promotional 5% cash back offer available on new Signal Financial FCU Signature Visa credit cards for the 12 months after card activation. For existing cards, offer is available from April 8, 2019 to April 7, 2020. After 12 months, the cash back returns to the standard cash back rate of 2% for all purchases. 5% cash back will be given for purchases made at qualifying merchants in the categories of home improvement, home decor, and home repair. Call 301-933-9100 if you have questions about qualifying purchases.

³ 2% cash back is a standard feature of the Signature Visa credit card and applies to all valid purchases made with a Signature Visa credit card, subject to other restrictions.

⁴ APR=Annual Percentage Rate. 0% APR on all purchases, balance transfers, and cash advances for the first 6 months after card activation. Rate for any remaining purchase, transfer, or cash advance balance will revert to the standard variable rate, 12%–14% depending on creditworthiness, after the first 6 months. Refer to your most recent statement for your current standard variable rate. No balance transfer fee or cash advance fee will be charged for the first 6 months after card activation. For any new balance transfers or cash advances initiated 6 months or more after card activation, a fee of \$10 or 2.5% of the transfer/advance (whichever is greater) will apply.

⁵ APR=Annual Percentage Rate. 0% APR on all balance transfers and cash advances for the first 6 months after the transfer/advance. Rate for any remaining transferred/advanced balance will revert to the standard variable rate, 12%–14% depending on creditworthiness, after the first 6 months. Refer to your most recent statement for your current standard variable rate. No balance transfer fee or cash advance fee will be charged for the first 6 months after card activation. For any new balance transfers or cash advances initiated 6 months or more after card activation, a fee of \$10 or 2.5% of the transfer/advance (whichever is greater) will apply.

Federally insured by NCUA.

EVENTS & Entertainment

■ Sock Hop Group

Go Sock Hoppin' in July and August

by Abigail Murton

The next sock hop dance is on Saturday, July 20, from 7-10 p.m. in Clubhouse II, with karaoke from 6-7 p.m.

The price of admission is \$5. Sodas and water are provided, but dancers may bring their own beverages and snacks. "Take Two Entertainment" continues to provide great dance music.



And then on Saturday, Aug. 3, experience "Sock Hop Live" when the band Groove Quest performs live from 7-10 p.m. in Clubhouse I, with karaoke from 6-7 p.m. The price of admission

is \$10 and a cash bar will be available. Dancers may bring their own non-alcoholic beverages and snacks.

Come relive the fun of high school dances. For questions, contact Doug Brasse at (301-448-8708).

■ Education and Recreation Department

July 25: Soprano Performs 'Songs for My Father'

On Thursday, July 25, at 2 p.m. in the Clubhouse II auditorium, soprano Erica Marie Ferguson performs a special concert, "Songs for My Father," in remembrance of her father, Paul Andrew Ferguson. Featured pieces will include operatic classics by Puccini, heartfelt works by Samuel Barber and festive songs to celebrate her father's life.

Joining Ferguson on stage will be Zach Taylor, the first recipient of the Paul Andrew Ferguson Memorial Scholarship at Towson University. The scholarship was established to commemorate his life and love of classical music and is awarded annually to a deserving voice student at Towson University, selected by the faculty.

The performance is free, but tickets, maximum two per person, are required and can be obtained in both clubhouse E&R offices. Please bring your Leisure World ID.

About the Performer

Ferguson is currently a member of the Maryland Opera

Studio at the University of Maryland where she is pursuing her master's of music degree. Her operatic performances include the title role in "Princess Ida," Countess Almaviva in "Le Nozze di Figaro," the title role in the world premier of "Hajar," Laetitia in "The Old Maid and the Thief" and Nurse Lola in "Gallantry; A Soap Opera."



Erica Marie Ferguson, courtesy photo

Ferguson has performed with Annapolis Opera for three seasons in their children's opera outreach productions and recently in their Arias & Encores Concert.

She has studied at the Washington National Opera Institute, the Levine School of Music, the Baltimore Lyric Opera and graduated from Towson University with a bachelor's of music degree.

Donations towards the Paul Andrew Ferguson Memorial Scholarship at Towson University will be graciously accepted at the performance or may be made online at (towsonuniversity.givingfuel.com/departments-of-music).

■ Education and Recreation Department

■ Foundation of Leisure World

July 27: 'Come Together' for 'Beatlemania Again'

by Leisure World News

Those who "believe in yesterday" might do well to attend "Beatlemania Again," a Beatles tribute jointly sponsored by the E&R Department and the Foundation of Leisure World. The performance occurs twice on Saturday, July 27, at 4:30 and 7 p.m. in the Clubhouse II auditorium.

"Beatlemania Again," which has been performed across the U.S. and Canada for 20 years, portrays the Beatles' career from beginning to end. Four musicians emulate the great quartet in costume and sound, using the same instrumentation as the Beatles themselves.

Tickets cost \$15 and are available in both clubhouse E&R offices, "but you better hurry 'cause it may not last!" Please bring your Leisure World ID.

About the Fab Four

John Lennon is portrayed by Marty McGowan. McGowan has performed as Lennon for more than 20

years, including at several big-name venues.

Paul McCartney is portrayed at Broadway caliber by Alan LeBeouf, who for two years had the role of McCartney in the musical "Beatlemania."

George Harrison is

portrayed by Tyler Lindemuth. Aside from Beatles tributes, he has written original music and played in a classical guitar ensemble.

Ringo Starr is portrayed by Rich Morello, also the band's manager.

He's known for rendering Starr's drum parts with great energy and has drummed nationally and internationally for more than 25 years.



Beatlemania Again. Graphic courtesy Galaxy Entertainment



About the Foundation

The Foundation of Leisure World is a 501(c)(3) organization that was established for health, educational and cultural purposes. Contributions to the Foundation may be claimed as deductions on income tax returns to the extent permitted by law. If your club or organization has a need, email the Foundation at (foundation@lwmc.com).

Musical Performances at the Clubhouse Grille

The following bands will perform from 6-8 p.m. in the Clubhouse Grille restaurant. To make dinner reservations, call (301-598-1330). A \$5 cover charge applies.

July 31

Aug. 7

Aug. 14

Aug. 21

Aug. 28

Michael Binder, Swing'N On A Star

The Night and Day Band with Mike Susser and Vocalist Charlene Cochrane

Motown Classics with The Winstons Duo

Michael Binder, Swing'N On A Star

"Sax with Mike" Surratt

■ Ballroom Dance Club

July 27: Swing'N On A Star Performs for Dancers

by Joyce Hendrix

A favorite trio with ballroom dancers, Michael Binder and Swing'N On A Star, featuring Linda Russell on vocals, will perform at the next dance on Saturday, July 27, from 7:30-10:30 p.m. in the Clubhouse I Crystal Ballroom.

Because the Club's most recent dances have reached Club capacity at 120 dancers, the Club strongly suggests making reservations as early as possible with Hal Freeman at (bobbihal@aol.com) or (301-438-7513) no later than Thursday, July 25. The Club can't guarantee entry to the dance

without prior reservations.

The summer dress code for dances is a more relaxed business casual with collared shirts and slacks for the gentlemen and dressy casual outfits for the ladies – no hats or jeans.

The band plays strict ballroom tempo music from all eras and all types of ballroom, including waltzes, both fast and slow, foxtrots, rumbas, tangos, merengues, polkas, quickstep and sambas. A cash bar will be available in the Ballroom. Members and guests may bring snacks for their tables.

The Club is accepting annual memberships through

September. Residents pay \$10 per person for the balance of the calendar year. Non-members and guests pay a \$15 entry fee to each dance, while members pay \$10 each to enter.

The Club thanks Carol Bartels and several of her students who participated in a dance showcase featuring the waltz and an energetic Charleston at the June 22 dance. The Club will have more showcases at future dances.

The Hawaiian-themed dance on Saturday, Aug. 24 will feature Mike Surratt and The ECBs. Make your reservations, put on your dancing shoes and come dance with us!



Dancers Patricia Mir and David Wolff, students of ballroom dance teacher Carol Bartels, perform during a showcase at the June 22 Club dance. Photo by Walt Hendrix

■ Education and Recreation Department

Aug. 3: Vocalists Perform Tribute to Doris Day

Singer and actress Doris Day (1922-2019) is an icon of music and the Silver Screen.

In her mid-teens, she began singing for noted bandleaders such as Bing Crosby and Les Brown. And it was while working for Brown in 1945 that she recorded "Sentimental Journey," which became her first smash hit.

Her singing led her into acting and during the '50s and '60s, Day was one of Hollywood's biggest stars. Later in her career, she also starred in several TV series.

As her singing and acting career drew to a close, she launched herself anew as an animal activist, advocating against the misuse and abuse of animals.

Day's songs endure and have become woven into the tapestry of the American Songbook.

On Saturday, Aug. 3, at 7 p.m. in the Clubhouse II auditorium, pianist and vocalist Frank Plumer and vocalist Rachel Panay pay tribute to Day's music, performing some of her most recognizable songs such as "Sentimental Journey," "Que Sera, Sera," "It's Magic," "Secret Love" and many more. They will share stories from her career and insight into the music as well.

Tickets for this special tribute are \$10 per person and are on sale in both clubhouse E&R offices. Please bring your Leisure World ID.

About the Performers

Plumer is well-known to Leisure World audiences. A musician from the age of four, he performs regularly at the Metropolitan Club and has been entertaining area audiences for more than 30 years.

Plumer has also entertained many celebrities and Washington luminaries including Hillary Clinton, George W. Bush, Michelle Obama, Ivanka Trump and Stevie Wonder, among others. His repertoire includes classical, jazz, Broadway works, American standards and music from around the world, often including humor with the music.

This performance is vocalist Panay's first appearance at Leisure World. A graduate of Duke Ellington School

for the Arts and the prestigious Berklee College of Music, Panay is a six-time Billboard Club charting singer-songwriter.

She recently returned to her musical theatre roots appearing as Rose in Theatre Lab's production of "The Secret Garden." Panay is also a Wolf Trap resident teaching artist in the Washington, D.C., schools and has been commissioned by Wolf Trap to



From left, pianist and vocalist Frank Plumer and vocalist Rachel Panay, courtesy photos

create and perform her original children's performance piece, "Jazz Cat/Blues Kitty."

BP SERVICE
Carpet & Upholstery Cleaning

Commercial and Residential
Pet Stain Removal, Gum Removal
& Deodorize
We Move and Replace Most Furniture

Houses/Apts/Offices/Churches/Daycares

Benjamin Pena
Office: 301-942-8789 • Cell: 240-505-5213

Wills, Wealth Planning & Trusts



Luann Battersby
Leisure World neighbor
3510 Chiswick Ct

Phone: 301-518-0423
Email:
Luann_Battersby@comcast.net
Housecall: No charge!
www.battersbylawoffice.com
Simple will:
\$175/person; \$330/couple
Living will/medical directive \$80
Financial power of attorney \$90

Probate: flat fee or hourly, not a percentage of estate.

Estate and tax planning.
I also assist clients in other related matters when they need my help.

■ Arts in Motion (AIM)

Aug. 9: Audience Favorite Shirleta Settles Returns

by Grace C. Cooper

AIM continues its popular concert series on Friday, Aug. 9, with one of its favorite performers, Shirleta Settles. Her beautiful voice and entertaining stage presence are always a hit with audiences.

Tickets, \$20 per person, (check only, payable to AIM) are on sale in the Clubhouse I E&R office. Hors d'oeuvres and snacks are included. Cocktails begin at 5 p.m., and the show starts at 6 p.m. Reserved tables of eight or more are limited to members only.

Concerts are held every

second Friday of the month. The proceeds from AIM's concerts help to support the arts by providing awards and scholarships to local arts students.

Reminder

AIM hopes residents have their ticket for the Saturday, July 20, "Authors in Mind" lecture, which will present a new set of books by the authors known as "Sisters in Crime."

The lecture is at 1 p.m. in Clubhouse I. Snacks will be served and the authors' books will be available for purchase. Although the lecture is free, tickets are required and available at the Clubhouse I E&R office.



Shirleta Settles, courtesy photo



■ Education and Recreation Department ■ Foundation of Leisure World

Aug. 11: The Fabulous Hubcaps Roll Into Town



The Fabulous Hubcaps, courtesy photo

Always a favorite, The Fabulous Hubcaps return to Leisure World on Sunday, Aug. 11. Co-sponsored by the E&R Department and the Foundation of Leisure World, the band performs two shows, one at 4:30 p.m. and the other at 7 p.m., in the Clubhouse II auditorium.

Tickets are \$15 per person and are on sale in both clubhouse E&R offices. Please bring your Leisure World ID.

About the Hubcaps

Performing since 1974, originally as Harvey Hubcap and the Do Ron Ron, the band continues to create the classic sounds from the early days of 1950s rock 'n' roll through the pop music of the 1970s.

Remember drive-in movies, milkshakes and sock hops? Remember the day trips to Ocean City, traveling down Route 50 listening to the Beach Boys? If the answer is "yes," then let The Fabulous Hubcaps take you on a

musical journey down memory lane. And on the journey, you may even encounter the likes of Elvis, The Platters, Ray Charles or any one of the many artists members of the band impersonate.

The group was inducted into the Southern Legends Entertainment and Performing Arts Hall of Fame and the Maryland Entertainment Hall of Fame, which named them the 2015 "Vocal Group of the Year."

This is a fun and fantastic show you will not want to miss!



About the Foundation

The Foundation of Leisure World is a 501(c)(3) organization that was established for charitable, health, educational and cultural purposes. Contributions to the Foundation may be claimed as deductions on income tax returns to the extent permitted by law. If your club or organization has a need, email the Foundation at (foundation@lwmc.com).

HEARING

HAPPENS IN THE BRAIN



CONNECTIONS

HAPPEN IN THE HEART

**CALL TODAY TO SCHEDULE
AN APPOINTMENT!
301.637.7238**



Hearing HealthCare, Inc.

*Doctors of Audiology
Serving the community since 1996*

Wheaton | 3913 Ferrara Dr
Rockville | 2403 Research Blvd, #100

HearingHealthCareInc.com



Coming in 2019

The E&R Department is pleased to provide the following programs.

July 25, 2 p.m.	Erica Marie Ferguson – Songs for My Father
July 27, 4:30 p.m.	Beatlemania Again
July 27, 7 p.m.	Beatlemania Again
Aug. 3, 7 p.m.	A Tribute to Doris Day
Aug. 11, 4:30 p.m.	The Fabulous Hubcaps
Aug. 11, 7 p.m.	The Fabulous Hubcaps
Aug. 17, 7:30 p.m.	Chris Ryan and Jerry Katz – Our Huckleberry Friend
Sept. 7, 4:30 p.m.	The Rolling Stones Tribute
Sept. 7, 7 p.m.	The Rolling Stones Tribute

Watch Leisure World News for more information on these and other upcoming programs throughout the year.

Aug. 17: 'Our Huckleberry Friend' – The Music of Johnny Mercer



American lyricist Johnny Mercer, photo courtesy (media.npr.org)

On Saturday, Aug. 17, at 7:30 p.m., the duo of Chris Ryan and Jerry Katz return to Leisure World with another of their popular cabaret-style shows, this time about Johnny Mercer.

The American lyricist, songwriter and singer is best known for his catchy lyrics and upbeat tunes. Opening with “Jeepers Creepers” and closing with “Accentuate the

Positive,” Ryan and Katz will bring the music of Mercer to life as they perform many of his classic pieces, including his four Academy Award-winning songs. Many of them are still well-loved and remembered.

Interspersed with the songs will be video of other singers, composers he collaborated with and movie segments that feature his music to illustrate Mercer’s 46-year career and the movie music and lyrics he created.

Presented by the E&R Department, tickets for the show are \$8 per person and go on sale beginning Tuesday, July 23, at 8:30 a.m. in both clubhouse E&R offices. Please bring your Leisure World ID.

About the Performers

Ryan has been involved in music since she was in third grade and sang a solo in the school play. She produced and

directed school musical productions, fostering in her students the thrill of being on stage singing and dancing in some of Broadway’s biggest hits. Later, she began performing at Washington, D.C.-area piano bars and recorded three CDs with Tom Saputo.

For more than 35 years, using magic, song and humor,

Katz has entertained while educating students and teachers on energy topics. However, he decided to step away from teaching and turn his own energy to producing unique and entertaining cabaret shows that, with his partner Ryan, he performs throughout the Washington metropolitan area.



Preserve Your Family Memories!

Photo Scanning
by Kim

Personalized service
at an affordable price
Volume discounts available!

Call Kim at (301) 438-3140

Virtual Computer Services
www.creative-alternative.com



SENIOR LIVING – YOUR WAY!

At Brightview West End, We Believe in
POSSIBILITIES, INDEPENDENCE & CHOICE.
And So Do Our Residents:

BRIGHTVIEW
SENIOR LIVING

WEST END

Luxury Retirement Community

RANKED #1 IN RESIDENT SATISFACTION 2018*



*Evelyn M., Assisted Living
Neighborhood*

“The **POSSIBILITY** that I can learn bridge at 97 is amazing to me. The art classes and bridge are two things that have made all the difference.”



*Stan T., The Independent Living
Gallery Neighborhood*

“I can talk to you all day about how great this place is. I can be as **INDEPENDENT** as I want or use all the great services available if I choose.”

We understand that not everyone ages the same way. When couples have different needs, we can personalize services and even living options.



Meet Paul and Jenny E.

“I have peace of mind knowing Jenny is well taken care of. I have the **CHOICE** to play in the orchestra, do my own thing, and to be with her whenever I want.”

Live life *your* way at Brightview West End.
Call Wendy or Jayna to schedule your personal visit today.

301.284.7214 | www.BrightviewWestEnd.com

285 North Washington Street | Rockville, MD 20850

*2018 Holleran Community Engagement Survey     

Aug. 22: Dance Troupe Presents Classical South Indian Dance Styles with Interactive Performance

by Fred Shapiro

Kalanidhi Dance has captivated audiences in the U.S. and around the world for nearly 20 years, demystifying India's rich and ancient tradition of Kuchipudi dance.

The Center for Lifelong Learning (CLL) and the Friends

of India Association have joined together to present the dance troupe on Thursday, Aug. 22, at 11 a.m. in the Clubhouse II auditorium. The performance is free for all residents; tickets are not required.

Enjoy the Kalanidhi dancers as they present the beautiful South Indian classical dance style, Kuchipudi. Led by Kalanidhi company members, the session will deepen residents' understanding of this culturally rich art form through dance demonstrations and discussion. Participants will interact directly with the dancers and even get a chance to learn aspects of Kuchipudi's gestural dance vocabulary.

About Kalanidhi Dance

Kalanidhi Dance performs classical and original works using the timeless visual vocabulary of Kuchipudi,

one of India's major classical dances. Guided by founder and artistic director Anuradha Nehru, Kalanidhi seeks to push Kuchipudi in new and exciting directions while remaining authentic to its style.

Over the last decade, Kalanidhi has collaborated across genres and musical styles to critical acclaim, presenting Kuchipudi to the works of Yanni, Philip Glass and Ravi Shankar, and has performed with Opera Lafayette, The New York Baroque Dance Company and the Seán Curran Company.

The New York Times has called Kalanidhi "a combi-

nation of bright energy, full-bodied sweetness and rapid precision" and a "rare amalgam of prime dance virtues."

Founded in 1991 by Anuradha Nehru, Kalanidhi Dance is a non-profit organization 501(c)(3), that is committed to the preservation, promotion and education of Kuchipudi dance, which originated in Andhra Pradesh, India.



The Kalanidhi dancers. Photo courtesy (www.kalanidhi.org)

Rose's Antiques
Estate Sale Services



LICENSED-INSURED-EXPERIENCED

Call for a Free Consultation:
2023162528, 7039669935

DLLR# 2773 SGREED@ROSESANTIQUES.COM



 **ATRIUM VILLAGE**
a Senior Lifestyle community

 **SENIOR LIFESTYLE**
your life, your style

  **Pet Friendly**

Make a change for the better.

Live a worry-free lifestyle
surrounded by good friends
and exceptional care.

CALL **410-973-6201**
TO SCHEDULE A VISIT.

Independent Living | Assisted Living | Memory Care
#03AL1030-F

4730 Atrium Court | Owings Mills, MD 21117

WWW.SENIORLIFESTYLE.COM

■ Education and Recreation Department

Sunday Afternoon at the Movies

Aug. 4: 'The Bookshop'

The E&R Department is pleased to present "Sunday Afternoon at the Movies." The movies are shown at 2 p.m. in the Clubhouse II auditorium.

On Sunday, Aug. 4, the featured film is "The Bookshop" (2018, 1 hour 53 minutes, drama, rated PG for some thematic elements, language and brief smoking).

Free tickets, limit two per person, are required and can be obtained beginning Tuesday, July 23, at 8:30 a.m. in either clubhouse E&R office. Please bring your Leisure World ID.

When widowed Florence Green opens a bookshop – and works to make a success of her business – she engenders the ill-will of other shopkeepers and townspeople. Maybe a small town is not the best place for a bookshop.

Adapted from the novel by Penelope Fitzgerald and directed by Isabel Coixet, the film features Emily Mortimer as Florence Green and Bill Nighy at the reclusive Edmund Brundish.

Sunday movie screenings are for your enjoyment; there is no charge. Be sure to pick up your ticket(s) in advance if you plan to attend. Please note that no one will be seated after 2 p.m.



2019 Movie Schedule

Sponsored by the E&R Department

Movies are FREE and shown for your enjoyment in the Clubhouse II auditorium, though you will need a ticket. Please pick up your tickets (limit two per person) on the date indicated below at either Clubhouse I or II. Please bring your Leisure World ID; and remember tickets can go fast.

Show Date & Time	Movie	Tickets Available
July 28, 2 p.m.	On Chesil Beach	LIMITED
Aug. 4, 2 p.m.	The Bookshop	July 23
Aug. 22, 1 p.m.	First Man	Aug. 6
Sept. 19, 1 p.m.	Indivisible	Aug. 20
Sept. 29, 2 p.m.	The Wife	Sept. 10

Movies are subject to change.



10% Off

online order with code
"leisureworld"

•Fried Chicken •Wings •Subs
•Wraps •Burgers •Seafood

•Carry Out

•Delivery

Chicken Basket Norbeck
4007 BB Norbeck Rd.
Rockville, MD 20853

301-929-1991
301-929-1922

www.chickenbasketnorbeckrd.com

We Provide Compassionate Urology Care for the Residents of Leisure World.

Chesapeake Urology is conveniently located at 3801 International Drive in Silver Spring, just around the corner from Leisure World.



Richard A. Kurnot, M.D.
General Urology for Men and Women



Cheryl Shih, M.D.
General Urology for Men and Women: English, Mandarin Chinese, Spanish



Vik Uberoi, M.D.
General Urology for Men and Women: English, Hindi, Spanish



Anup A. Vora, M.D.
General Urology for Men and Women: English, Hindi, Gujarati, Spanish

Chesapeake
UROLOGY

The most personal care for life's most personal issues.

301-598-9717

chesapeakeurology.com

Prostate, Bladder and Kidney Cancers and Conditions • Kidney Stones • Erectile Dysfunction • Urinary Tract Infections • Pelvic Pain • Bladder Control Conditions • Enlarged Prostate
Female Urinary Incontinence • Pelvic Organ Prolapse • IC/Painful Bladder • Pelvic Pain

HEALTH & Fitness

■ FISH (Friends in Sickness and Health)

Donation Station

by Beth Leanza

FISH accepts donations of assistive equipment to lend out to residents and employees. Items frequently donated to FISH include wheelchairs, commodes, walkers, tub stools and shower chairs, among others. Donated items are kept in the FISH office in Clubhouse II.

FISH also accepts incontinence products, elevated toilet seats, arm supports for toilets, canes, easy reachers and seat cushions, and gives these items away to anyone who needs them.

FISH only accepts assistive items; general household items are not accepted. Other items not accepted include boots or foot braces, CPAP machines, oxygen tubes or medicines. (The MedStar Health medical center accepts expired or unwanted prescription medicines).

Other Collections

FISH is also the place where residents can drop off donations for other charitable causes.

The Kiwanis Club collects can tabs to support Ronald McDonald House Charities, which helps pay living expenses for the parents of children with cancer. The Lions

Club accepts eyeglasses, hearing aids and batteries.

Unused greetings cards are no longer collected at the FISH office, however they can be dropped off at the Women's Thrift Store near MedStar Montgomery Medical Center in Olney.

FISH Information

The FISH office is located in Clubhouse II, and its phone number is (301-598-1345). Volunteers are in the FISH office Monday to Friday (except major holidays), from 10 a.m.-4 p.m. During the winter months, FISH closes if Montgomery County Public Schools are closed because of inclement weather. FISH also houses lost and found items.

Want to Help?

Residents who think they may want to volunteer at FISH should contact the Group's president Beth Leanza at (301-598-4569) or (bethlea12020@gmail.com).

FISH recommends a new volunteer sit in a session with a trainer to learn the ropes. Volunteering with FISH is not difficult – it just requires some simple record keeping and a friendly and kind demeanor!

July 23: Stepping On Program Follow-Up

Instructors from the Montgomery County Office of Aging will hold a follow-up session for residents who participated in the March-April Stepping On Program. The follow-up session is on Tuesday, July 23, at 10 a.m. in Clubhouse I.

Residents' feedback and participation is greatly encouraged.
– Ellen Lederman

■ Lions' Vision Support Group

Aug. 14: Meet Others with Low Vision

by Larry Cohen

The World Health Organization estimates that globally approximately 1.3 billion people live with some form of distance or near-vision impairment.

A person's experience with vision impairment may vary greatly depending on many different factors, such as availability of preventative and intervention treatments, access to vision rehabilitation (including assistive technology and products) and whether a person experiences problems with inaccessible buildings, transportation and information.

More than 30 years ago, Leisure World clergy helped to form a low vision support group to help educate and support people with vision impairment. Now in 2019, the

Lions' Vision Support Group supports these same principals and is all-inclusive for residents and friends with comprehensive vision loss concerns.

Upcoming Meetings

The Group's next meeting is on Wednesday, Aug. 14, at 1 p.m. in Clubhouse I.

The Group's Wednesday, Sept. 11, meeting will feature guest speaker Dr. Catherine Cukras, director of the Retina Fellowship Program at the National Eye Institute (NEI). The meeting is at 10 a.m. in the Clubhouse II auditorium.

Remember that information is power and ensures a good quality of independent living!

For more information about Lions' Vision Support Group, contact Larry Cohen at (301-244-3004) or (topops@aol.com).



**FAMILY FOOT & ANKLE
ASSOCIATES OF MARYLAND**

**Dr. Michael Frank
Dr. Marc Goldberg
Dr. Adam Lowy**

**3 Convenient Locations
Minutes from Leisure World**

OLNEY

Oland Professional Center
3408 Olandwood Ct. Suite 204
Olney, MD 20832
(301) 924-5044

KENSINGTON

Family Foot & Ankle Associates of Maryland
3930 Knowles Ave Suite 202
Kensington, MD 20895
(301) 942-8110

SILVER SPRING

Colewood Centre
10801 Lockwood Dr. Suite 260
Silver Spring, MD 20901
(301) 439-0300

www.MarylandFeet.com

**PHYSICIAN HOUSE
CALLS ARE BACK!**

No more germ filled waiting rooms!
Medicare accepted for qualified patients



Stephen L. Kinney, MD
Primary and Urgent Care
Board Certified Family Medicine

Dr. Kinney comes to your home!

For more information:
Call: 202-368-6820 | www.metrodcmed.com

Pain Control

- Acupuncture - Acu Massage

- Auto & Work injury

We accept Health Insurance

SENIOR DISCOUNTS!

301-592-1234

CALL DR. LEE OR DR. MA SHA

EAST - WEST
ACUPUNCTURE AND HERB CLINIC LLC
東西漢醫院

1120 New Hampshire Ave, Suite 409
Silver Spring, MD, 20904

www.acupuncture-drs.com

Medical Center Hours

Adjacent to the Physical Properties Department, the MedStar Health medical center bustles with a few dozen generalists and specialists providing healthcare weekdays from 8 a.m.-5:30 p.m.

Several of the healthcare offerings are open to all residents; you do not have to be a MedStar patient to use these services. For a full list of providers and services, visit (residents.lwmc.com) and click on "Medical Center" under the Amenities & Services dropdown arrow.

For more information, call the medical center at (301-598-1590).

Health & Fitness In Brief

Al-Anon Meeting: Al-Anon (for family and friends affected by alcoholism) meets Fridays at 2 p.m. at Our Lady of Grace Church Parish Center, near Leisure World. Enter through the back door (15661 Norbeck Blvd., Silver Spring). For more information, call Bridget at (301-598-3043).

Alcoholics Anonymous (AA): Newcomers welcome. (If outside Leisure World, check in at the main gate.) Meetings are Mondays at noon (Step Meeting) and Thursdays at 6 p.m. (Big Book) in Clubhouse I. For questions, contact Laurie at (240-558-4454).

Alzheimer's Caregivers Support: The Alzheimer's Support Group meets the first and third Wednesday of each month at 3 p.m. in The Inter-Faith Chapel library. For more information, call Sunny at (301-438-2446).

Bereavement Support Group: If your spouse or long-term partner died in the recent past, you may be eligible to participate in a twice-monthly bereavement support group that meets every other Tuesday, 2-3:30 p.m., in the conference room at MedStar Health, 3305 N. Leisure World Blvd. CaringMatters sponsors group meetings. Registration and a phone conversation with Jim Rossi, director of adult bereavement at CaringMatters, is required before attending. If interested, call Jim at (301-990-0854).

Fitness Center: One of the Fitness Center's personal trainers leads a free orientation tour of the Fitness Center on the second Tuesday of every month at 2 p.m. Learn how to use the equipment and facilities. Registration is not required.

Free Blood Pressure Testing: Come to Clubhouse I for free blood pressure testing, available on the first and third Tuesdays of the month from 9-11 a.m.

Memory Café: The Memory Café meets the last Thursday of every month from 2-3:30 p.m. in Clubhouse I. The program provides social engagement for individuals living with early stage memory loss. Registration is required. For more information, call the manager at (240-428-1342) or the National Alzheimer's Association at (1-800-272-3900) or (TTY: 1-866-403-3073) or visit (www.alz.org).

Parkinson's Support Group: The Leisure World Parkinson's Support Group was created under the auspices of the Parkinson Foundation of the National Capital Area to provide support to patients suffering from Parkinson's disease (PD) and their families and caregivers. The group meets the second Tuesday of the month at 3 p.m. in Clubhouse II. Usually there is a presentation by a speaker with knowledge about PD, physical therapy or some other related subject, followed by a period of Q&A. There are no memberships or fees to pay, and the meetings are open to anyone who may be interested. Questions? Contact Ray Weil at (301-598-3447) or (raywwjr@hotmail.com).

Stroke Support Group: You are not alone! The Leisure World Stroke Support Group invites stroke survivors and caregivers to its monthly meetings on the third Tuesday of the month from 1-3 p.m. in Clubhouse II. No registration is needed, and all are welcome. For more information, contact Amy Boltz at (248-652-0304).

CARE & PERSONALIZED SERVICES IN MY INDEPENDENT LIVING APARTMENT

NOW THAT'S THE BEST OF BOTH WORLDS.

ASPENWOOD
SENIOR LIVING COMMUNITY
14400 Homecrest Road
Silver Spring, MD 20906
301-598-6424



ENHANCED HOME CARE SERVICES 24/7 PERSONAL CARE

FREQUENTLY REQUESTED SERVICES:

- Registered Nurse Oversight
- Medication Management
- Diabetic Management
- Personal Grooming
- Accompany assistance offered in the community
- Safety Checks by Nursing Staff

www.AspenwoodSeniorLiving.com

INDEPENDENT LIVING • ASSISTED LIVING
OUR VERY OWN INDEPENDENT LIVING 24 HR.
ENHANCED HOME CARE SERVICES



©2019 Five Star Senior Living



CLUBS, GROUPS & Organizations

■ Fun and Fancy Theatre Group

Make Way for the 'Girls'

by Hannette Allen

Fun and Fancy Theatre Group's fall musical, "70, Girls, 70," is on its way.

Performance dates are Friday, Nov. 15, Saturday, Nov. 16, Sunday, Nov. 17, Friday, Nov. 22, Saturday, Nov. 23, and Sunday, Nov. 24. The production committee has met, and auditions have been held. Rehearsals will begin soon.

Don't hesitate to get involved and be part of this fun Broadway musical. Ticket-sellers are needed. Residents who can help out with ticket sales are asked to call Joan Okin at (301-598-2349) or Dorothy Hughes at (301-598-7998). More information about ticket sales is forthcoming.

July 4 Celebration

Residents who attended the July 4 parade and celebration saw several Fun and Fancy members in full costume.



Laura Rittenberg performs as Susan B. Anthony at the July 4 parade. Photo by Fred Shapiro

They included Elizabeth Brooks-Evans as Rosa Parks, Joan Bowar as Betsy Ross, Stan Jones as Dr. Martin Luther King Jr., Jim Leong as Benjamin Franklin, Saul Penn as Thomas Jefferson, Laura Rittenberg as Susan B. Anthony, Skip Schoening as John F. Kennedy,

Debbie Stevens as Lady Liberty, Dave Weiss as Patrick Henry, and John McConnell III (grandson of John and Pat McConnell) as Abraham Lincoln.

A 'historically' good time was had by all!

■ Garden Plots Group

Garden Plots are Thriving

by Judy Elrod

The cooler spring and frequent rains have resulted in lushness throughout the garden plots.

The Group's next monthly cookout is on Friday, July 19, at 5:30 p.m. at the garden plots.

The first monthly cookout was held June 21, the longest day of the year and first day of summer. It was a pleasant evening for dining on hamburgers, hot dogs, corn-on-the-cob and vegetables from the grill. A large salad made from freshly picked greens from the garden, and various other dishes, served as compliments. And no meal is complete without desserts!

The annual potluck dinner is held on Monday, Aug. 19,



Photo by Leisure World News

at 5 p.m. in Clubhouse II. After dining on a variety of foods made from the Group's garden produce, members will be recognized in best flower, vegetable and combination garden categories.

Garden plots are still available for this year. If interested, contact Catherine Kunz at (703-798-6831).

■ Jewish War Veterans Charles B. Krieger Post 567

Post Offers Reduced Membership Rate

by Jerome "Jerry" Cohen

The Jewish War Veterans Post 567 is taking its summer break and will host its next brunch on Sunday, Sept. 8, at 10:15 a.m. in the Clubhouse I Crystal Ballroom. The brunches are open to all residents.

The Post was proud to incorporate members of Jewish Residents of Leisure World and participants from the Jewish Discussion Group into its July 4 parade assemblage. The group walked together along with two flag bearers, several grandchildren and four mighty granddogs. Congratulations to incoming new Post member, Dottie Chanil, who represented all of Leisure World as the parade's grand marshal.

Membership

For a limited time only, the



Members of Post 567, Jewish Residents of Leisure World and the Jewish Discussion Group march together in the July 4 parade. Photo by Fred Shapiro

Post is offering a reduced new member rate. With payment of the 2020 annual dues, the remainder of 2019 will be included at no additional charge.

Jewish Veterans who served on active duty, in the Reserves or in the National Guard and hold an honorable discharge qualify for membership. Contact Jerry Cohen for membership information at (240-970-5024) or (jcohen@jccbb.com).

■ Women's Fun Bunch

Aug. 17: Fun Bunch Sees Jazz Vocalist Veronica Swift

by Marlene Golden

In June, Women's Fun Bunch members boarded a bus and headed for Baltimore City for lunch in Little Italy and a personalized tour of the Jewish Museum of Baltimore.

For the Group's next excursion, on Saturday, Aug. 17, members will gather at AMP by Strathmore (in the Pike and Rose Center in Rockville) to see jazz vocalist Veronica Swift. AMP is a small venue similar to a night club. It should be a great show and the Group has front row seating.

Tickets are \$45 per person. Only 15 tickets are left for the show, so mail your check, payable to Elinor Tattar, to Elinor at (15300 Pine Orchard Dr., Apt. 3K, Silver Spring, MD 20906) as soon as possible. Write the name of the event on the check's memo line.

A flyer with detailed information was sent out to members.

The Women's Fun Bunch is for widows living in Leisure World. Group members have a good time together and plan adventures. For more information or to join, call Marlene at (301-438-7773).

Summer Is a Good Time to Take Photographs

by Fred Shapiro

The Rossmoor Camera Club encourages its members to take advantage of the bright, summer months to capture images that can be submitted to one of the Club's monthly photo competitions or printed and hung in one of its exhibits.

In addition to the natural features, wildlife and people in Leisure World, the community's close proximity to Washington, D.C., and local attractions such as Brookside Gardens provide photographers with many scenic images.

Keep in mind that the Club's competitions and Clubhouse I exhibits have two open categories in which any photo can be entered.

Meetings

The Club's meeting on the



From left, "Busy Bee" and "Here's Looking at You," photos by Fred Shapiro; "Blossoms," by Frank Roddy

second Tuesday of each month is a learning experience that is open to members and all residents.

Members are asked to consider the subjects they would like to learn about during the Club's monthly meetings. Send ideas and potential contacts to Fred Shapiro at (fshapiro@comcast.net).

Join the Club

The Rossmoor Camera Club encourages residents to join the Club to learn how to improve

their photographs.

Membership has two levels: those who expect to compete in the monthly competitions pay dues of \$25 for the year, and residents who wish to join the Club to learn more about photography but are not interested in competing pay dues of \$15.

Mail checks for dues to Woody Shields at (Rossmoor Camera Club, 3200 N. Leisure World Blvd., Apt. 817, Silver Spring, MD 20906).

For more information about the Club, visit (www.rossmoorcameraclub.com).

JOEL'S EXECUTIVE CAR SERVICE

301-438-9777
301-980-4734 (cell)

- Airport
- Trains
- Doctor Visits



Get the Royal Treatment
Available 24 hours.

Now Open

701 King Farm Boulevard, Rockville, MD 20850
240-398-3846 | www.ikfmd.org

INGLESIDE AT KING FARM IS A NOT-FOR-PROFIT, CARF ACCREDITED, SAGECare CERTIFIED, LIFE PLAN COMMUNITY.

EXPERIENCE A NEW APPROACH TO *Memory Support*

Ingleside at King Farm has added even more choices to our engaged living community, and now offers the area's newest *Memory Support Assisted Living*. Through an innovative person-directed approach that emphasizes each person's abilities, we celebrate life through diversity and engagement in a place where character and compassion coexist. Brand new residences are now available for immediate occupancy in *Memory Support*.

For over a decade, *Ingleside at King Farm* has provided exceptional living in a community with an unmistakable sense of well-being.

Be one of the first to tour this exceptional addition, and call 240-398-3846 today!

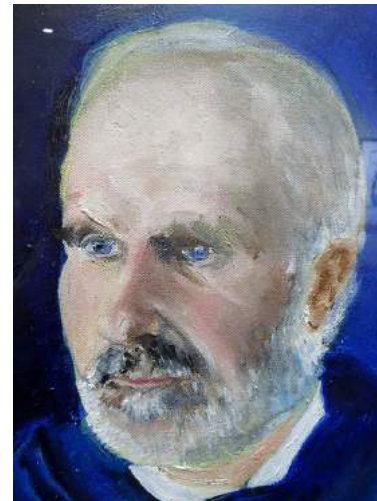
From Owls and Dogs to Portraits and More

by Ann Bolt

Not everyone went to the beach this summer, judging by the number of paintings that adorn the halls of Clubhouse I.

Twenty-seven Rossmoor Art Guild (RAG) members are exhibiting paintings, with subject matter ranging from owls to Glen Echo Park. Bugs and dolls, drums and dogs, gardens and monks and a few portraits and chicks also add to the general exhibit category.

Those exhibiting include Nettie Geier, Judith Lessin, Nancy Bullough, Paul Ganz, Maria Clark, Houston Hancock, Jeanette Shampain, Patty Marx, Judy Kirkland, Marilyn Davis, Violet Vicky Batkin, Patty Elton, Eileen Dunn, John Kyle, Phyllis



From left, "Burrowing Owl" by Nancy Bullough; Whimsical "Blue Dogs" by Alexandra Michaels; see more of Michaels' work in an exhibit that runs through August in Clubhouse II; Brother Horvath by Paul Ganz, photos by Ann Bolt

Lowinger, Ann Bolt, Carol Edwards and new exhibitor to RAG, Steve Irish. The exhibit runs through July.

Copycats

RAG's "In the Manner of..." exhibit represents the notion

that "copying is the greatest form of flattery." Many famous artists, some current and some of yesteryear, were studied and copied by 10 RAG artists.

They include RAG artist Paul Ganz in the manner of

Edward Hopper; Maria Clark in the manner of Peter Max; Ann Bolt in the manner of Gustav Klimt; Violet Vicky Batkin in the manner of Pablo Picasso; Alexandra Michaels in the manner of George Rodrigue; Judith Lessin in the manner of Fernand Léger; Houston Hancock in the manner of Edward Hopper; Eileen Dunn in the manner of René Magritte; Nancy Albrecht in the manner of Post-Impressionist artists, and Marilyn Davis in the manner of James Abbott McNeill Whistler.

The mediums used included acrylics, pastels, gouache, colored pencil, mixed media and watercolor. The exhibit continues through August. And for a bright and colorful exhibit, be sure to visit Clubhouse II during July and August to see paintings by Alexandra Michaels.

Trust Your Doctor with Your Eyes

Trust Eyeland with Your Eyewear



"Eyeland is great. Bob is knowledgeable and friendly."

\$150 OFF
a pair of
prescription glasses

eyeland
301-871-6454

13808 Georgia Ave. 1 mile south of LW.



NOW TOURING!

Assisted Living and Memory Care with a whole lotta heart.

In other words, The Landing has a whole bunch of heartfelt help and care. But don't take our word for it, come see for yourself. Please call 240.377.0084 now to schedule a tour. And bring a friend. Or come meet a few new ones.

THE LANDING
OF SILVER SPRING

13908 New Hampshire Ave • Silver Spring
240.377.0084 • TheLandingofSilverSpring.com

☛ A LEISURE CARE ASSISTED LIVING & MEMORY CARE COMMUNITY

Art Supplies

To provide a pleasing environment for RAG painters, committee members Nancy Albrecht, Dee Williams, Phyllis Lowinger, Maria Clark and Ann Bolt have been visiting various art stores and browsing supply catalogs to update the equipment in the RAG studio.

The latest purchases include tables, full easels and table easels. Pending purchases are focused on tilt-top tables, all of which are possible from the grant provided by the Foundation of Leisure World.

Get Ready for 'Christmas' in August

by Maggi Lindley

Members of the Gilbert and Sullivan Society (G&S) are working hard during rehearsals so they can bring a delightful production, "A Gilbert and Sullivan Christmas Carol," to their friends and neighbors.

Written by New Yorker Gayden Wren, this version of Charles Dickens' "A Christmas Carol" uses all of G&S's favorite music from all of the G&S operettas. It is a funny and lively production, and G&S is sure that everyone who sees it will be enchanted by it.

Meet the Cast

Director Beth Youse and music director Elaine O'Leary are sharpening G&S singers' senses and making sure the songs are perfect. Narrator Herman Cohen and Jack Melnick, who plays a miserly, bad-tempered Scrooge, lead the cast.

They are supported by most of the original's well-known characters: Bob Cratchit (Steve Bennof), Tiny Tim (Ida Leong) and other members of the Cratchit household, Marley (Todd Hubley) and three Ghosts of Christmas Past (Florence Campi), Present (Maureen Harris) and Future (Anna Pappas).

Theatre-goers will also see Mr. Fezziwig (Ed Caglione), Young Scrooge (Vito Sabia) and his cronies, Scrooge's nephew, Fred, (Doug Brasse) and his party attendees, as well as the philanthropists Mrs. Kindheart (Mary Jane Boyle) and Mr. Goodman (Bob Bridgeman).

Each member of the cast is 'becoming' the character they will play, and many other cast members are working hard to make this a fantastic production.

Upcoming Performances

"A Gilbert and Sullivan

Christmas Carol" will be presented on three dates in late August: two evening performances on Friday, Aug. 23, and Saturday, Aug. 24, at 7:30 p.m. and a matinee on Sunday, Aug. 25, at 2 p.m.

Tickets go on sale starting in early August, with the exact date to-be-announced. G&S hopes residents will come and have some fun as they perhaps find that Mr. Scrooge isn't so bad after all!

G&S on July 4

Some of the cast took time to bring the show to the July 4 parade. Scrooge, displaying the words "bah" and "humbug" on his person, rode his bicycle because "misers can't afford to buy cars." Other cast members carried the Society's banner while others traveled in a white convertible.

General Information

The Gilbert and Sullivan

Society meet the first Thursday of every month at 1:30 p.m. in Clubhouse II. Dues are a mere \$10 per year and the Group would love to have others join.

G&S is also starting a trial of evening meetings beginning in October for those who would like to join the Group but are still working.

More details are forthcoming.

Baronessa

Italian Restaurant

1302 E Gude Dr Rockville
MD 20850

(301) 838-9050

15% OFF

Dinner or
Weekend Brunch

Cannot be combined with other offer.
15% off, up to max. \$15. Coupon must be
presented at the time of purchase.
One per table

Expires August 15th, 2019

ALZHEIMER'S DISEASE AND DEMENTIA CARE CONSULTATIONS

One-on-one assistance from Diane Vance, programs and services
manager of the Alzheimer's Association National Capital Area Chapter

2ND WEDNESDAY OF EACH MONTH
COMPLIMENTARY 50-MINUTE SESSIONS

BROOKE GROVE REHABILITATION AND NURSING CENTER
18131 SLADE SCHOOL ROAD • SANDY SPRING, MD 20860

This service is designed to help caregivers — as well as those who are newly diagnosed — cope with the impact of Alzheimer's and other forms of dementia, enabling participants to better understand the disease, manage care and make informed decisions regarding services and treatments. Consultant Diane Vance can assess current needs, help develop a care plan, address behavioral and communication concerns, share coping techniques, discuss care options, provide resources and more. Care consultations may be scheduled at any time during the dementia journey.

To schedule your appointment, contact Toni Davis
at 301-388-7209 or tdavis@bgf.org.




BROOKE GROVE
RETIREMENT VILLAGE



July 24: Cardin Discusses Environmental Bill

by Marybeth Ardike
and Sarna Marcus

On Wednesday, July 24, at 2 p.m. in Clubhouse I, LW Green presents well-known environmentalist and philanthropist Rabbi Nina Beth Cardin to explain the Healthy Green Maryland Amendment she introduced and why it's so important to support this bill.

The amendment would guarantee a right to uncontaminated water, breathable air and a healthy environment for present and future generations of Maryland residents. Lest you think this idea is too broad to be practical, such an amendment has already been passed in both Pennsylvania and Montana.

Cardin's bill is scheduled to be re-introduced in the upcoming session of the Maryland General Assembly. Come hear why many people think that Maryland

should be the third state to adopt a Healthy Green Amendment.

The Unitarian Universalists and Jewish Residents of Leisure World are co-sponsoring this program.

Solar Initiative

Also at the July 24 meeting, Ed Nicosia, chairperson of the Energy Advisory Committee, will provide a brief but urgent update



about the status of the Committee's initiative to bring more solar energy to Leisure World. A

full presentation on this topic is planned for the near future.

LW Green will not hold a meeting in August. The planning committee is taking a break. Do watch for the Group's emails and flyers, however, and we'll see you in September!

Recent Events

A contingent of LW Green members and supporters

marched behind the Group's banner during the July 4 parade.

Their spirited chants helped emphasize their various campaigns, such as "Ban Pesticides; Save the Bees!" and "Rethink, Reduce, Reuse, Recycle!" The Group appreciated the cheers of many spectators showing their support.

And the turnout was high at LW Green's double showing of the film "Paris to Pittsburgh," with approximately 150 residents viewing the film. The film documents the challenges that communities across the country are facing because of the present and growing climate crisis.

It also highlights the role that state and local government are playing in supporting effective actions to avert the impending catastrophe, inspiring feelings of hope during these challenging times. Several audience members said the film is inspirational as well as informative.



LW Green participates in the annual July 4 parade. Photo by Fred Shapiro

Residents who were unable to attend either showing of this film may view it for free on several digital platforms, including National Geographic's website.

About LW Green

LW Green is a group of residents who are striving to be better stewards of the environment through education and advocacy. All interested residents are invited to attend its meetings held the fourth Wednesday of each month at 2 p.m. in Clubhouse I. For more information, visit (www.lw-green.com).

Owning Bonds Can Put Your Retirement on Hold



Join Scott Shulman,
Managing Director – Investments
as he answers....

- What is the outlook for the economy and stock market?
- How to build a steady income stream
- How safe are bonds?



Oppenheimer & Co. Inc. Transacts Business on All Principal Exchanges and Member SIPC. 2573999.1

Lunch Seminar:
Wednesday, July 31, 2019
12:30 PM

Leisure World
The Potomac Room
3701 Rossmoor Boulevard
Silver Spring, MD 20906

RSVP to Cole Samuels at (202) 261-0718
or email at cole.samuels@opco.com

Club Seeks to Increase its Membership

by Jack Colvis

The number one priority of Kiwanis Club members is giving all children the chance to grow into respected adults.

Helping kids is often accomplished through the creation of Kiwanis youth clubs at all levels of the education system – elementary, middle, high school and college – in joint guidance with local teaching staff.

The Club also helps families who have fallen on hard times

by lending them a helping hand in any creative way that it can.

As many of the Club's members advance in age, new members are needed – residents who see the value in what the Club does and are willing to join and keep the youth development program alive and well. If you know the need is real and want to help, consider joining the Club.



Join Us

Residents who would like to spend some of their time helping serve the local community and its children in small ways should consider joining the Kiwanis Club. Every month, the Club initiates a valuable service project activity.

Contact Heather Benjamin-Alexis at (240-433-0948), Jack Colvis at (301-598-5380) or

Susan Leshner at (240-558-3110) to learn how to become a member. Membership applications are available in the Clubhouse I E&R office. Residents are encouraged to visit Kiwanis Club meetings on the third Friday of each month in Clubhouse I.

More information about the Kiwanis International organization is available online at (www.kiwanisone.org). Kiwanis is an IRS 501(c)(4) non-profit organization.

■ National Active and Retired Federal Employees (NARFE) Chapter 1143

Take a Stand by Joining NARFE

by John Moens

The last step of NARFE's annual program was literally the last step of the last marcher in the July 4 parade. The Chapter is taking a summer hiatus and thanks everyone who marched behind its banner.

Meetings

The Chapter's membership meetings resume on Monday, Sept. 16, but for the Chapter's board, summer break is much shorter. The board's first fall planning meeting was held on July 5.

In addition to planning for speakers and logistics, board

meetings will focus on an election of Chapter officers and an audit. The Chapter is looking for a secretary, and any member is welcome to run for any office or nominate a friend.

The Chapter urgently needs volunteers who are not running for any office to set up an election committee. Contact John Moens at (301-438-3237) or (johnjots@outlook.com) if interested in volunteering.

Membership


The Chapter's current membership is 122, and it values every member. But does this mean that only 122 residents are concerned about protecting the

rights and benefits of retirees?

Being few in number means the Group has to fight harder, but every member it adds increases its chance of winning. Is there anyone who has more to lose than you if your benefits are cut?

Contact John Lass, Chapter recruiter, at (301-288-4210) to let him know you intend to stand up for yourself and your colleagues by joining NARFE.



THINKING OF SELLING OR BUYING? Call Nina! Direct: 240-888-8557 Office: 301-598-7500 
www.longandfoster.com/ninadavis

LONG AND FOSTER GOLD TEAM MEMBER
AND TOP PRODUCER OF OFFICE



Leisure World
Plaza
3836 International
Drive
Silver Spring, MD
20906

LONG & FOSTER
REAL ESTATE

CHRISTIE'S
INTERNATIONAL REAL ESTATE



877.224.2294

www.yourscootershop.com

Now located inside the MedStar Medical Center at Leisure World. Call today to schedule an appointment with our sales and service staff for new equipment, rentals, or repairs. We provide in-home evaluations and repairs.

Hours of Operation: Monday - Friday 10am - 3pm

APPOINTMENT ONLY PLEASE, No Walk-Ins



JOHN J. FERGUSON, ESQ.
FERGUSON & WILPON

ESTATE ADMINISTRATION/PROBATE

WILLS POWERS OF ATTORNEY LIVING TRUSTS

REAL ESTATE MEDICAL DIRECTIVES/LIVING WILLS

CALL JOHN FERGUSON
301-570-3633

3406 Olandwood Court, Ste. 202, Olney, MD 20832
WE CAN MEET IN YOUR HOME OR OUR OLNEY OFFICE

Aug. 30: Presentation on Yoga and a Sing-along

by Fred Shapiro

The Center for Lifelong Learning (CLL) celebrates summer's conclusion with a presentation on yoga for strength building, a sing-along with the Fun and Fancy Outreach Group and refreshments on Friday, Aug. 30, at 1 p.m. in Clubhouse I.

The program is free and open to all residents, but residents are asked to register beforehand beginning on Tuesday, July 23, at 8:30 a.m. by either stopping by the Clubhouse I E&R office, or by calling (301-598-1300).

The presenter is Julie S. Holly from Synergy Home Care. She will address the basics of yoga that can serve as treatment for stress, depression and anxiety.

Holly is a certified yoga teacher, certified personal trainer and cancer exercise specialist. She has been teaching yoga and meditation for nine years and is one of Level Fitness' resident instructors.

Her specialties include alignment-based

yoga as well as yoga for the treatment of stress, depression and anxiety.

Sing-along

The sing-along will include a variety of songs selected to reflect the end of summer and beginning of fall. Fun and Fancy Theatre Group singers Nancy Koski and Steve Bennof will lead the songfest accompanied by Carol Copeland on the piano.

The refreshments will be provided by Synergy Home Care.

About CLL

The Aug. 30 presentation is one

example of the programs brought to residents by the CLL. Residents with an interest in participating in the work that the CLL does can attend its monthly business meeting held on the first Monday of every month at 10 a.m. in Clubhouse I.

Residents who have a background in a certain subject and would like to present a one-day program or teach a multi-session class should consider joining the CLL to bring their experiences and expertise to the community.

To learn more about CLL, including the courses and lectures it offers, visit the organization's website at (www.cllmd.com).

■ Jewish Discussion Group

July 28: 'The Boycott Threat to Israel on Campus and Beyond'

by Jerome "Jerry" Cohen

At the Group's next meeting on Sunday, July 28, Dr. Mitchell Bard, the executive director of the nonprofit American Israeli Cooperative Enterprise and an authority on U.S.-Middle East policy presents a talk entitled "The Boycott Threat to Israel on Campus and Beyond and How to Fight Back." The meeting is at 10:30 a.m. in Clubhouse II.

Bard was named one of the "top 100 people positively influencing Jewish life" by The Algemeiner Newspaper. He has appeared on local, national and international media outlets, his work has been published in academic journals, magazines and major newspapers and he has written and

edited 23 books. He is also the director of the Jewish Virtual Library and holds a doctorate in political science from UCLA.

Don't miss this featured presentation; a large turnout is expected.



Dr. Mitchell Bard, courtesy photo

About the Group

The Jewish Discussion Group invites people of all faiths to attend its free group sessions held on the fourth Sunday of the month from 10 a.m.-noon in Clubhouse II. The Group will not hold discussion sessions in August and November.

For additional information or to have your email address added to the monthly notification list, call or email group moderator Jerry Cohen at (240-970-5024) or (jcohen@jccbb.com).



Your friendly neighborhood dentists are right down the street!

MEET OUR DENTISTS

Dr. Cyrus Allafi and Dr. Sara Saba D.D.S.

- Comprehensive and personalized evaluations
- Emergency care offered
- Same day pain relief
- Comfortable tooth removal
- Most insurance plans accepted
- Financing plans available
- Our caring staff are always happy to help

NEW PATIENT SPECIAL OFFER

\$99

(a \$310 value)

Includes Comprehensive Examination, Necessary X-rays, and Routine Cleaning*

*In absense of periodontal disease

CALL TODAY AND SCHEDULE AN APPOINTMENT!

301-871-6660
www.aspenhilldds.com

13975 Connecticut Ave.
Silver Spring, MD 20906
Suite 302, Third Floor



Kathleen and Eileen Kane

Honored to Serve You For 35+ Years with
Cathy Gilmour Real Estate and Proudly Continuing that
Same High Level of Service with WEICHERT REALTORS®



Kathleen Kane
Assoc. Broker

Eileen Kane
Assoc. Broker

G W/GARAGE – IN OVERLOOK. Wonderful views of trees and golf course from every window and enclosed balcony. High ceilings, excellent natural light. Lg. rooms throughout include gracious Living Rm and Dining Rm, Master Suite with two walk-in closets; Master Bath w/spacious shower & lg. double closet; Second Bedroom w/double closet; Hall Bath w/tub/shower; Gracious Entry Foyer w/premium wood flooring & double closet w/mirrored doors. Enclosed balcony is accessible from both Living Rm and Breakfast Rm. Beautiful white cabinetry in Kitchen & Breakfast Rm; large separate Laundry Rm w/lots of extra

storage; neutral color palette throughout; freshly painted and new wall to wall carpeting. Move in ready. Garage space #17 included in price!

\$351,500

SELLERS & BUYERS – Don't miss out! Summer is the time to take action. Interest rates are very low and listings are moving quickly.

FREE NOTARY SERVICES
By Appointment with Eileen
Call 240-460-8647

Dedication Makes The Difference!

WEICHERT REALTORS®
Office: 301-681-0550



Kathleen: 240-506-6079 | kathe.e.kane@gmail.com | Eileen: 240-460-8647 | ekane51@icloud.com

Aug. 21: Cantor Mike Kravitz Speaks About 'The Jewish Influence on the Rock 'n' Roll Era'

by Barbara Eisen

Hadassah is pleased to welcome back the popular speaker cantor Mike Kravitz on Wednesday, Aug. 21, at 2 p.m. in Clubhouse I. The title of his program is "The Jewish Influence on the Rock 'n' Roll Era."

Kravitz presents on this exciting topic that all are sure to enjoy. The cost to attend is \$5 by either check, payable to Hadassah, or cash, and collected at the door. Contributions help fund Hadassah projects.

The program is open to all residents and their guests. However, all residents who plan to attend are asked to RSVP to either Judy Rumerman at (judyrumerman@gmail.com) or (301-680-0850) or Bobbi Gorban at (bprem@aol.com) or (301-838-4336) to ensure enough seating. Bring your spouses and friends to this enjoyable afternoon program.

Judaic Study Group

The Judaic Study Group meets on Monday, Aug. 19, at 1:30 p.m. in Clubhouse I. Shari Goldstein will be the moderator.

Where can you read about the best meal to prepare? or graphic novels? or Molly Goldberg—remember her? or an interesting place to visit? or medical breakthroughs that Hadassah Hospital researchers are sharing with the world? The answer is: in Hadassah Magazine, of course.

Bring your most recent copies of Hadassah Magazine as the Group session will focus on interesting articles from the May/June 2019 and the July/August 2019 issues. As always, all residents and their guests are welcome.

For questions, contact Shari Goldstein at (240-293-6442), Marcia Elbrand at (marciaelbr@gmail.com) or

(216-496-6633) or Peri Schuyler at (301-869-2968).

Cards and Project

Elaine Schenberg and Jan Bloom sell Hadassah greeting cards. The prices are \$2.50 each or five for \$10. Cards are displayed and sold at every Hadassah meeting. Call Elaine at (301-598-0079) or Jan at (301-593-7720) to buy cards between meetings.

Larelda Gruber, available at (301-598-5922), is chair of Youth Aliyah/Children at Risk. This project helps disadvantaged children in Israel. The goal is to create a circle of \$1,000, made by individual contributions of \$40. Send donations to Larelda at (3200 N. Leisure World Blvd. #201, Silver Spring, MD 20906).

General Information

Hadassah sponsors many activities to further the worthwhile projects it supports in

medical, educational and social programs in Israel and in the U.S.

If interested in knowing more about Hadassah, contact one of its membership vice presidents: Lois Fields at (301-585-9804) or (loisfields2@earthlink.net), or Natalie Rosen at (301-279-5640) or (bnrosen@comcast.net).

Low interest rates getting you down? Let's talk.

William P Mason IV, AAMS®

Financial Advisor

17904 Georgia Ave Ste 107
Olney, MD 20832
301-774-8500
www.edwardjones.com

Edward Jones®
MAKING SENSE OF INVESTING

Member SIPC

PRESIDENTIAL
HEATING & AIR CONDITIONING, INC.



DANCE-WORTHY SAVINGS!



Big Savings

10% OFF UP TO \$250!

off Service or Installation*



Award winning



Master Electrical certified



EPA certifications



Master Gas Fitter certified



Factory trained



NATE certified

www.presidentialheatandair.com/leisure-world-2019

* See website for details.

CALL TODAY 301-517-9023

AUTO BODY

Rockville Central

Just off East Gude Drive

301-424-3500

**FREE ESTIMATES
IF YOU CAN'T COME TO US
WE WILL COME TO YOU**

SPECIAL OFFER

- ❖ Paintless Dent Removal from \$75
- ❖ Free Pick up & Drop Off
- ❖ Free Towing to Shop
- ❖ Free Touch Up Paint
- ❖ Lifetime Warranty on All Repairs
- ❖ Special Discounts for LW Residents

**We Happily Handle All Insurance
Claims for You**

Ask for Richard or Tony

Aug. 18: Organization Hosts Meet and Greet

by Judy Frumkin

Jewish Residents of Leisure World (JRLW) knows there are many eligible people in Leisure World who are not affiliated with the Group, and it's hoping to find them!

JRLW invites these residents to mix and mingle with the Group's current members at a Meet and Greet on Sunday, Aug. 18, from 2-4 p.m. in Clubhouse II.

During this time, prospective members can meet JRLW's officers and board members and see a PowerPoint presentation about the organization. Refreshments will be served and door prizes will be awarded.

Everyone attending will receive one raffle ticket, and those bringing a potential member and those joining the organization will receive an additional chance to win a door prize. Prizes will

include wine, gift cards and gift certificates to Corn Beef King.

Membership Benefits

Membership in JRLW has a lot of benefits, such as reduced price on High Holiday tickets, subscription to the Group's in-house publication – featuring JRLW services and activities – that is sent to members' homes monthly, and the ability to join with other Jewish members of the community, creating a strong voice.

JRLW holds monthly brunches with amazing speakers. In fact, the brunches are so popular that many times they sell out. The Group also has a special relationship with the Bender Jewish Community

Center of Greater Washington, which provides movies of Jewish interest, speakers and classes and the annual Health and Wellness Expo, all within Leisure World.



Lyle Wolinsky, JRLW president. Photo by Fred Shapiro



Many JRLW members maintain their relationship with their original congregation and yet join JRLW because they want to be part of the Jewish community in Leisure World.

JRLW helps connect Jewish residents with each other, provides religious services, and sponsors programs on Jewish culture and education. The Group has hundreds of members who participate in its activities and enjoy the Jewish community within Leisure World.

Besides having its own activities, JRLW serves as an umbrella

organization for Hadassah, the Jewish Discussion Group, the Jewish War Veterans and NA'AMAT RBZ Club.

JRLW is excited about its first Meet and Greet and hopes to see lots of current and future members there!

Contact Information

For further membership information about JRLW, contact one of the Group's membership co-chairs:

- Judy Frumkin – (judyfrumkin@gmail.com), (443-858-2894)
- Leah Weisman – (leaheweisman@gmail.com), (301-288-4267)

Also, check out JRLW's website at (www.jrlwmd.org), which includes a calendar of activities and list of current board members.

■ Comedy and Humor Club

New Club Schedule: Thrice Monthly Ain't Bad

by Al Karr

The Comedy and Humor Club has changed its meeting schedule to the first three Tuesdays of each month, with no videos of past television comedy classics planned. Previously the Club met every Tuesday, with the last Tuesday of the month reserved for the videos.

The decision was approved by a vote of the Club's membership present at the July 2 meeting.

The Club will continue to meet in Clubhouse II, where only members' brains and laughter muscles are exercised.

Attending that meeting were newly elected president John Lass, vice president Skip Schoening and treasurer Herb Hodes, along with Sam Hack, Sumner Levin, Wally Becker, Ruth Becker, Sunny Levin, Rudy Volin and Al Karr. What follows is a small sampling of the jokes, quips and alike offered for Club members'

enjoyment. All residents are invited to come by and join in the fun.

- Skip – A slight tax increase is \$3,000; a small reduction is \$3. He also shared a Bob Hope classic: "I don't feel old. I don't feel anything."
- Sunny – A father visiting the hospital maternity ward spotted a bright-looking infant, and, talking baby talk, asked him how old he was. The infant replied, "three

days old." The surprised man asked the baby how he knew that, and the baby said, "Well, I wasn't born yesterday."

- Sam – A taxicab driver tells a minister that when the latter preaches, his parishioners fall asleep, but when he, the taxi guy, drives them, "they pray."
- Rudy – Asked by Joe what his father does for a living, John says he's a magician; he does tricks like sawing people in half. Joe: "You have any brothers and sisters? John: "Four half brothers and two half sisters."

Personal Care Services In The Comfort Of Your Home



- Household chores
- Medication reminding
- Daily living and companionship
- Meal planning, preparation and monitoring of eating habits
- Overseeing activities, such as walking, to minimize the risk of accidents
- Shopping for groceries, with or without client
- Bathing and grooming and general personal hygiene
- Help with planning and making decisions
- Nursing services and many more!

Family Owned & Operated
Serving Montgomery County



Call for a Free Consultation and Assessment • 301.717.2212 • www.bestseniorcare.us

IMAGES SALON

Leisure World Plaza
Mon-Sat 8-7, Sun 10-5
301-598-3000
Barber: 301-598-4900

Meet our friendly, talented team!

- Over 30 years' experience
- Specialize in foil highlighting, trendy colors and updos. You name it, we do it!
- Affordable prices

We go above and beyond to please our guests. We promise you that you will leave very happy and satisfied with our excellent technical skills and great customer service.

3810 International Drive
Silver Spring, MD 20906

Aug. 15: Club Hosts Fun-filled Italian Night

by Carole Mund

On Thursday, Aug. 15, NA'AMAT holds a fun-filled evening of good food and entertainment at 6 p.m. in the Clubhouse I Crystal Ballroom.

The Italian buffet includes eggplant parmesan, salmon and pasta primavera accompanied by a salad, beverages and scrumptious desserts.

Musical entertainment is provided by vocalist Angela Knight.

The cost is \$37 per person. Checks, payable to NA'AMAT, must be mailed to Harriet Chaikin at (15101 Interlachen Dr., #216, Silver Spring, MD 20906) and received by Wednesday, July 31.

Any inquiries can be made to Harriet Chaikin at (240-560-7487).

Become a Member

Annual membership dues are due now. New members and returning members are

encouraged to join. NA'AMAT will soon begin a new season of activities and open meetings.

By joining NA'AMAT RBZ, a new member becomes a supporter of NA'AMAT Israel, which provides educational daycare programs, vocational training, legal aid and support services for women experiencing domestic abuse or violence and assistance to new immigrants.

Most importantly, a membership automatically places members on NA'AMAT RBZ's mailing lists to receive information about special events and trips prior to the general public.

New and former members should mail their check for dues (\$36, payable to NA'AMAT USA) to new membership chairperson Harriet Chaikin at (15101 Interlachen Dr., Apt. 1-216, Silver Spring, MD 20906).

Even if you have received your notices, all renewals should go through our local

chapter and not sent to headquarters in California.

Contact Harriet at (240-560-7487) for any questions.

Book Club

NA'AMAT RBZ has a book club that meets the fourth Wednesday of each month to discuss literature chosen by the club's members.

The book chosen for July is "Eleanor Elephant is Completely Fine" by Gail Honeyman, and for August, "Waking Lions" by Ayelet Gundar-Goshen. Contact Barbara Tahler at (240-669-6961) for the meeting time and place.

Upcoming Events

On Wednesday, Sept. 4, NA'AMAT RBZ will have its first open meeting of the season.

Cantor Michael Kravitz presents "A Program of Jewish Songs" at 12:30 p.m. in Clubhouse I. Kravitz is known to many in the Washington D.C.

area. All residents are welcome. Refreshments will be served.

On Saturday, Sept. 14, NA'AMAT sponsors a trip to see the fun-filled show, Capitol Steps.

The trip includes bus transportation and event tickets. Check the Club Trips section of this publication for details.

For further information, contact Esther Goldstein at (301-847-9215).

On Wednesday, Oct. 16, NA'AMAT presents a fashion show by J. Jill and luncheon. More events and trips are being planned.

Contacts

For more information about NA'AMAT RBZ, contact co-presidents Linda Schoolnick at (301-681-1076) and Gladys Blank at (301-438-9666).

For tribute cards, call Lenore Kalen at (301-922-4348).

For information about the Book Club, contact Barbara Tahler at (240-669-6961).



ESTEEM AMERICA

Create memories and go on a vacation of a lifetime!

If you are age 70 or older
with a life insurance policy
you no longer need,
consider getting a life
settlement. You may be
able to sell your policy for a
large lump sum cash
payout!

(877) 959-3547 • info@esteemamerica.com

Hurry up and Join the Club

by Marcia L. Elbrand

In an effort to make the Rossmoor Women's Club (RWC) annual directory more complete, paid-up members will be included in the directory if their check for dues for the 2019-2020 Club year is received by Tuesday, July 30.

Send checks for \$40, payable to the Rossmoor Women's Club, to Aggie Eastham at (3100 North Leisure World Blvd., #126, Silver Spring, MD 20906).

While the Club's membership has been in the range of 140 women in recent years, this past year saw an influx of more than 25 new members, the

majority of whom attended the new member welcome event in February.

The next opportunity for members, new and old, to get together will be at a welcome cocktail party scheduled for Wednesday, Sept. 18, from 3-5 p.m. in Clubhouse I.

"Our membership consists of active women who want to support nearly a dozen local charities," said new president Abigail Murton. Membership is open to residents and non-residents, up to the stated policy of a 10 percent non-resident limit.

"New members interested in becoming active will quickly find that they are eagerly welcomed,"

said the Club's recently installed secretary, Roz Sachs, who joined about two years ago.

"Once I volunteered in the Head Start classroom at Harmony Hills elementary school, I knew for sure that the causes this group promotes were those I hold close in my heart," she added.

New member Karen Kullgren, who joined the Club several months ago, found time this spring to help select recipients for the Club's college scholarships, despite her busy schedule as contributing editor at Washington Parent. "The scholarships are what I admire most," Kullgren said.



Rossmoor Women's Club members march in the July 4 parade. Photo by Fred Shapiro

Stephanie Mefford, who moved to Leisure World last summer from Florida, recently became the Club's historian. "I loved the fall fashion show, the beautiful luncheon at Christmas, and I helped carry the banner in the Fourth of July parade," she said.

■ **Going It Alone Club**

Club Welcomes New President and Officers

by Elizabeth Brooks-Evans

The Activities Room in Clubhouse II was filled with new and renewed members of the Going It Alone Club (GIAC) during the Club's annual meeting to elect officers for the coming Club year.

The Club welcomes new president Elaine Strass, who has been a resident since 2012 and participates in several other Leisure

World clubs including the Gilbert and Sullivan Society, the Fireside Forum and many others.



Elaine Strass, photo by Rachel Strass

Other GIAC officers are vice president Georgiana Jones, secretary Sharon Boone and treasurer Vivian Penda.

Trips

During the annual meeting, Joe Parker, who has agreed to continue serving as travel coordinator, reported on past trips and shared expectations for the

near future, including a possible sightseeing tour of "Holiday Decorations of Washington, D.C. plus Dinner" in December.

Other trips from now through the end of this year include Harris Crab House and the Amish Market on Thursday, Aug. 22, and the Pigeon Forge and Smoky Mountains Show Trip in Tennessee from Monday Sept. 16- Friday, Sept. 20. Details are available in the Club Trips section of this publication.

Sign-up for trips takes place during Saturday Afternoon Live (SAL) from 1:30-3 p.m. in Clubhouse II when a representative of the program committee is available to receive payments and answer questions. The GIAC newsletter, which has more trip information, is also available.

For questions about trips, call Joe Parker at (301-598-3457) or Sylvia Pachenker at (301-598-5325).

Armchair Travel

Armchair travel is during SAL at 2 p.m. in Clubhouse II. On Saturday, July 20, visit "Sunny Spain," a country on the Iberian Peninsula that has 2,000-year-old history and art. In Madrid take a look at the Royal Palace and the treasures of the Prado and from there, take an excursion to Escorial.

On the coast of Catalonia, the Costa Brava, such famous places

can be found as Tossa de Mar and Lloret de Mar. Next, visit Barcelona, one of Europe's most beautiful cities saturated by the spirit of Gaudi and Dali. Then journey to Granada, bathing in the sun of the Costa del Sol.

This travel video runs for an hour. Therefore, the first half will be shown on July 20 and the second half on Saturday, July 27.

Games

Games begin at 2:30 p.m. right after armchair travel with bridge and Rummikub in the Clubhouse II lobby. Members play Mexican train dominoes in the Game Room, where an old-fashioned dominoes game is also available. Members are also welcome to bring or suggest other favorite games.

Anyone interested in more information about games should contact Sylvia Pachenker at (301-598-5325).

Membership

Residents who missed their opportunity to renew their membership during the annual meeting can still do so during SAL from 1:30-3 p.m. The fee is \$8 per year and the income from dues is used to pay Club expenses and enhance activities.

For more information about membership, contact Sylvia Pachenker at (301-598-5325).

Special Sale - Buy 1 Meal and get the 2nd Meal Half OFF!

CHEF ON THE RUN®

301-990-7727

WE DELIVER!

EXPANDED MENU

A HEALTHY ALTERNATIVE WITH OUR NEW MENU ITEMS.
Too Tired to Cook? No Time to Cook? Let us prepare delicious meals for you. We deliver fresh food daily, very reasonable rates. No boring food. Only food with a bit of love sprinkled in. Gift certificates are now available. Ask for Dina.

Errand, shopping and companionship services also available!

Association Elects New Officers

by Patricia Means

At the annual meeting on June 27, the following members were elected to serve as officers for the period of July 1, 2019 through Tuesday, June 30, 2020:

- Cheryl Prejean Greaux, president
- Laura Wiltz, vice president
- Judith "Judy" Robinson, treasurer
- Eleanor Thompson, financial secretary
- Elizabeth Brooks-Evans, recording secretary
- Haroldie "Dee Dee" Spriggs, correspondence secretary

Lawrence "Larry" Traynam was the presiding official for the election and Shirley Henderson, swearing-in official, administered the oath of office ceremony.

Juanita Sealy-Williams, outgoing president, summa-

rized three years of LWAAAC activities and thanked members for their support. Laura Wiltz, treasurer, provided a three-year financial summary. Chairpersons Alfonso Holston (membership), Sharon Ricks (scholarships) and Patricia Means (acting public relations) gave annual reports.

Sealy-Williams presented the officers and committee and event chairpersons with gifts of appreciation, and she was presented gifts on behalf of the membership.

During July and August, the newly elected officers and appointed chairpersons will be planning for the continuation of administrative functions and developing an exciting array of new activities in line with the vision and mission of the Association. For any events occurring in July and August, members will be notified via LWAAAC robocalls.

The next board of directors meeting is Wednesday, Sept. 4. The Drumbeat will be issued in October.

Membership Drive

LWAAAC membership is open to all residents. If you're a member, we want to keep you and if not, now is the time to join the Association. Members enjoy and participate in LWAAAC programs and traditional and new events throughout the year.

The dues are \$20 per person (checks only, payable to LWAAAC). Payment may be made at meetings, via the LWAAAC mail slot in the Clubhouse I E&R office or mailed to (LWAAAC, PO Box 12316, Silver Spring, MD 20908).

A telephone number and an email address should be included with the payment.



Elizabeth Brooks-Evans as Rosa Parks and Stanley Jones as Martin Luther King Jr. at the July 4 parade. Photo by Fred Shapiro

Additionally, indicate your interest in serving on one or more committees: amenities, membership, program and public relations.

For additional information, contact Alfonso Holston at (301-438-3537).



Check out my 5 star reviews on [zillow.com](https://www.zillow.com) and [google.com](https://www.google.com)

It pays to work with a licensed Leisure World Specialist!

Call me to learn what your Leisure World home is worth



- Free Professional Photos
- Free Home Staging
- Weekly Listing Updates
- Weichert Top Lister
- Leisure World® Specialist
- Comprehensive Marketing Plan



ACTIVE
3210 N. LW Blvd.
1,489 sf. Garage parking space. 3 bedrooms, 2 baths. Light and bright living and dining room. New paint, new carpet, granite counters. List \$360,000



CONTRACT
3330 N. LW Blvd.
1,480 sf, M model 3 bedrooms, 2.5 baths. Remodeled kitchen. Separate dining room with built-ins. Golf course view. Indoor garage space. List \$324,900



CONTRACT
15115 Interlachen Dr.
F model, 1,115 sf. 2 bedrooms, 2 baths. Updated kitchen. All new stainless appl., new paint and carpet. Indoor garage space. List \$210,000



COMING SOON
3005 S. LW Blvd.
1,315 sf. Garage space. 2 bedrooms and 2 baths. Large table space kitchen. Spacious living room with fireplace, separate dining room. New paint & carpet. Scenic view.



Barbara Michaluk | Weichert

Call me direct 240-506-2434 (o) 301-681-0550

www.BarbaraSellsMDhomes.com / Email: michaluk@verizon.net

Authorized Leisure World® Specialist / E-Pro® Certified Senior Real Estate Specialist® / Certified Staging Agent® Internet Marketing Specialist® / Relocation Specialist®



Authorized Leisure World® Specialist

Aug. 4: Boomers Picnic in the Park

by Beth Leanza

The Baby Boomer Club is purely social – members watch movies, play games and sometimes dance to live music.

In the summer, the Club likes to picnic together. The next picnic is on Sunday, Aug. 4, starting at noon at East Norbeck Park.

Sometimes Club members watch movies in the Clubhouse II auditorium, and sometimes they go out to eat dinner and see a movie at a nearby theater. The Club also enjoys seeing live performances at Toby's Dinner Theatre in Columbia.

After the movies and during the games Club members share snacks – the Club provides soft drinks and water. On game nights, members may bring alcoholic beverages to the Clubhouse II Activities Room.

The Club welcomes people of all ages, and all Club activities are held on evenings and weekends to accommodate the sched-

ules of working residents.

Ready to Join?

The Club's membership is ready and waiting to receive dues and get you signed up. Send a check for \$5 per member, payable to Baby Boomer Club, to Susan Landesberg at (3505 Twin Branches Ct., 37-C, Silver Spring, MD 20906).

Include your address and phone number (if not on the check) and email address. Members who do not have email should keep in contact with a member who does.

Adding the Baby Boomer group email address (bbclw@googlegroups.com) to your contact list or address book will help to prevent the Club's emails from ending up in the spam or junk folder. The Club keeps its emails limited to activities that members might enjoy.

Club members who have joined but are not receiving emails are asked to contact Beth Leanza at (301-598-4569) or (bethlea12020@gmail.com).

The Club's website is available at

(<https://sites.google.com/site/bbclwmd>) and includes a calendar with walk information.

Friday Hikes with Joyce

Anyone is welcome to join the walks led by Joyce Richardson on Fridays. During the warmer months they meet up at 10:15 a.m. at a local trail. Most walk about three miles, but some walk halfway and return. To carpool to the trail, contact Joyce at (301-598-7098) by Thursday night.

- July 26 – Black Hills Regional Park (Boyd's, MD). Meet at the Visitor's Center at 10:15 a.m. Bring water and lunch. Take 270 N., and then take the exit to MD-270 E. Turn left onto Maryland Route 355. At the light, turn left onto Old Baltimore Road, which becomes MD-270. Look for the left turn into the park. Follow signs to the Visitor's Center and meet there.
- Aug. 2 – Washington Grove Conservation Park (Redland, MD). Meet at Bounding Bend Court at 10:15 a.m. Bring water and a lunch. Drive north on Georgia Avenue. Use the left two lanes to turn left and merge onto MD-200 W. Take Exit 3 toward Shady Grove Road/Metro Station. Use the right lane to take the Shady Grove Road E ramp. Continue on Shady Grove Road. In .8 mile, turn left onto Epsilon Drive. In .7 mile, turn left onto Amity Drive. Turn right onto Bounding Bend Court.

The group will walk into the Washington Grove community and stop by McCathran Hall for a restroom break after about a 3/4-mile hike.

Sunday Morning Walks

Join a group of walkers that meet up on Sundays at 8:30 a.m. near Arden Court (across from Kelmscot Drive) to walk the entire Leisure World Boulevard circle. Afterward, join the walkers for breakfast. For more information, email Ted Michos at (Tedmichos@gmail.com).

Weeknights Walks

For a shorter walk (about one mile) around the Broadwalk in Montgomery Mutual, meet on weeknights at 7:15 p.m. in the lobby of Clubhouse I. No announcement is made; just look for a group forming and introduce yourself.

AVA Walks

The American Volkssport Association (AVA) holds events and provides guides to local walks of interest. More information about AVA walks is available on the Club's website at (<https://sites.google.com/site/bbclwmd>). Click on Walks, below the events calendar.



GALAXY PAINTING
COMMERCIAL & RESIDENTIAL PAINTING & RENOVATION
Since 1976

CUSTOM PAINTING
PLASTERING
CARPENTRY
INSURANCE
WATER DAMAGE
MASONRY/
CERAMIC
INDUSTRIAL
RENOVATION
CONDOMINIUMS

DC. LIC. # 39601168
MHIC LIC. # 31079
VA. LIC. # 2705034376

- COMMERCIAL & RESIDENTIAL
- EVENINGS & WEEKENDS
- GREEN & LOW VOC PAINT PRODUCTS

FREE
REMOVAL/DISPOSAL
OF YOUR OLD PAINT
CANS THROUGH
PROPER HAZMAT
PROCEDURE

FREE
ESTIMATES
BONDED
INSURED
LICENSED
Members:

AOBA
NARI
Painting & Decorating Contractors of America

301-530-2600
www.galaxypainting.com

superguarantee

Clubs, Groups & Organizations In Brief

Amateur Radio Club: Calling all hams! All resident amateur radio operators (hams)—or would-be operators—are invited to join our business meeting/lunch the second Tuesday of each month. We meet in the Stein Room in Clubhouse I at 1 p.m. For more information or to learn about amateur radio, call Bryan West at (301-598-0137).

Book Club Network: The network is a collection of book discussion groups of eight to 12 members each, providing a forum for residents to get together with other avid readers to read and discuss their favorite books. Members meet monthly to talk about a specific work chosen by their club. For further information, contact Verna Denny at (301-598-1418) or (verhd@msn.com).

Clipper Workshop: Members assemble clown hand puppets for Holy Cross Hospital. They are used in the pediatric and emergency rooms. No special skills are needed. Some sewing skills are necessary. Bring a bag lunch. (We will eat in the lunchroom.) Members meet every first and third Monday in Clubhouse II from 10 a.m.-2 p.m., or any portion of the time you can devote to making a child smile. Donations of cotton fabrics, stuffing, thread and iron-on facing are appreciated. Contact Joan Mahoney at (240-833-2724) or Jane Brinser at (301-438-2599) for further information.

Computer Learning Center: Located in Clubhouse II, the Computer Learning Center is operated by The Leisure World Computer Center Inc., a 501(c)(3) non-profit organization. The all-volunteer staff comprises a board of directors, computer room monitors and other volunteers. The center provides residents free training and assistance in the day-to-day use of computers for online research and other personal needs. The center has Mac and Window systems computers as well as color laser printers for printing and scanning. For more information about the Computer Learning Center, please visit (www.computerctr.org) or contact the E&R office in Clubhouse II at (301-598-1320).

Hispanos de Leisure World: All Hispano-Parlantes residents are invited to join the club in enjoying its activities, including card games and conversations, every Friday at 3 p.m. in Clubhouse I. Once a month, Latin-American and Hispanic movies, with English subtitles, are screened. The club organizes a Fiesta de La Amistad on a weekend in the spring and a Christmas dinner in December. The club has also presented musical shows in the Clubhouse II auditorium as well. If interested, contact Maria Blanco, club president, at (301-847-9066) or Carlota “Loty” Goldenberg at (301-598-6869).

Knitting Corner: Join us the second and fourth Fridays of each month at The Inter-Faith Chapel from 10 a.m.-noon. Our next meeting is July 26. Bring your knitting and enjoy the conversations. We have patterns and yarn for the Chapel’s mission. Yarn donations gratefully accepted. Call Joan at (240-833-2724) if you have any questions.

The Lapidary Shop: Our well-equipped Lapidary Shop is available to all residents who join the Lapidary Club and take training on use of the shop’s equipment. Shop steward Mark Parker oversees training and is usually in the shop on Monday afternoons after 2 p.m. To arrange for training, contact Mark at (240-723-5860), or drop by the shop in Clubhouse II on a Monday afternoon to talk to Mark and see the shop. For those who have received training, the shop is available whenever the Clubhouse II E&R office is open. Get trained and make cabochons. Get involved and make friends.

LW LGBTQ Alliance: Our group was formed to give members of the LGBTQ community a safe and inviting place to come and meet new friends and to get involved in social activities. Our meetings are the third Saturday of every month at noon in Clubhouse II, except July and August. We welcome everyone; being gay is not a prerequisite. The LW LGBTQ Alliance strives to provide events and activities to develop strong relationships through education, interaction and fun within our group and with the entire Leisure World community. For additional information and events, email us at (lwlgbt@gmail.com). You will also be able to follow us on Facebook at LW LGBTQ Alliance.

Model Railroad Club: If you have ever had an interest in model trains, our three layouts in the basement of Clubhouse II offers just about anything you could ask for. Our largest layout, in HO, features scale miles of track, yards and industries, and supports the simulated operation of real railroads delivering passengers and goods from source to final destination. Visit us on Mondays and Wednesdays from 5:30-7 p.m. and Thursdays from 2-4 p.m. in the basement of Clubhouse II, or join us for our monthly business meeting on the second Thursday of the month at 4 p.m. in Clubhouse II. For more information, call Marilyn Chmielewski, president, at (301-438-3259).

Musical Jammers: We gather informally once a month with other amateur musicians, singers and lovers of music to sing, play music and have fun – no dues, no meetings, no agendas, no committees. We meet on the second and fourth Mondays of every month at 10 a.m. in Clubhouse II. All instruments and voices are welcome. You bring it; we’ll sing it. Questions? Call Richard Lederman at (301-598-1132).

New Yorkers and Friends Group: Join fellow New Yorkers and Friends on the second Thursday of each month at 10:30 a.m. in Clubhouse I. The Group offers opportunities to support outreach projects and to engage in a wide range of social activities. The Group’s motto is “New Yorkers & Friends Can Make a Difference!” The Group welcomes anyone who has had affiliations with New York (both city or state), or who just likes New Yorkers. For more information, contact Connie at (301-438-2667).

Nextdoor.com: A friendly place online to share tips and meet neighbors. We already have a record of success helping make Leisure World even better. Free. Please join our 1,200 plus members. Go to (www.nextdoor.com/join) and enter the code QHMXCF.

The Philadelphians: For further information about the Philadelphians and their events, contact Steve Kane at (301-598-2330) or (kanens@verizon.net).

The Pittsburghers: If you were born, raised or lived in Pittsburgh and/or the Greater Pittsburgh area, you are welcome to join us. For more information, call Tania Iwanowski at (301-598-2278) or email (Tania.Iwanowski@yahoo.com).

Quilting Group: Come and join our fun group as we work on our individual projects. We now include those interested in all needlework and knitting. We meet the second and fourth Thursdays in the Clubhouse II multipurpose room at 9:30 a.m. If you have any questions, call Clydis Kellough at (301-642-2430). Our next meeting is July 25.

Stitchers Group: Needlepoint, cross-stitch and more. If you enjoy stitching or would like to learn, we meet every first and third Thursday from 10 a.m.-noon in the Clubhouse II multipurpose room. Come and share your finished work and enjoy stitching with us while we learn new skills together. Call Audrey at (301-598-4903).

Short Story Group: The Group reads from a collection of short stories and discusses them together. The Group has been reading from the anthology “The O. Henry Prize Stories 2018,” which contains 20 award-winning stories by various authors. On Wednesday, Aug. 7, Sami Demiray will lead a discussion of “Deaf and Blind” by Lara Vapnyar. On Wednesday, Aug. 21, the group will begin reading from a new collection of short stories, “The Short Story Prize: 15 Years of Great Fiction,” and will discuss “The Book of Miracles” by Edwidge Danticat. The Short Story Group meets on the first and third Wednesdays of the month at 11 a.m. in Clubhouse I. For information, call Beth Leanza at (301-598-4569).

Stamp and Coin Club: Are you a philatelist or a numismatic? Join the Stamp and Coin Club. We meet on the first Thursday of each month at 3 p.m. in Clubhouse I. Members discuss their collections, including first day covers, day of issue programs, yearbooks, coins, medals and more. Stamps are shared for “show-and-tell,” and we hold an auction of members’ stamps. A gift certificate is awarded as a door prize at each meeting. All residents and non-residents are welcome to attend. Annual dues are \$5. If interested, contact Rita Mastrorocco at (301-814-9196).

Town Meeting Organization: TMO is a movement of residents concerned about governance and management. We meet every month to organize, discuss and conduct resident town hall meetings. Topics such as the proposed administration building, community governance, management and its involvement in mutual elections, and funding a strategic plan will be addressed. TMO meets the third Friday of each month at 2 p.m. in the Clubhouse I. All residents are invited to attend and become active in the movement. For information email (admin@townmeetingorganization.com) or visit (www.townmeetingorganization.com).

Wood Shop Users Group: The woodshop is located on the lower level of Clubhouse I; the entrance to the shop is off Gleneagles Drive. It is open Monday through Friday, 9 a.m.-3 p.m. and Saturday 9 a.m.-noon. An experienced monitor is on duty when the shop is open to assist members with their work and provide instructions in the use of shop equipment. Members are often willing to repair and refinish projects for Leisure World residents. For further information, call (301-598-1308).

Women in the Military: Are you a female who has served in the armed forces? Join us as we shine a light on the role that women play in serving our country. We also strive to promote awareness of the Women’s Memorial at Arlington National Cemetery. We meet every second Wednesday of the month at 10 a.m. in the Terrace Room. Call Barbara Long at (301-438-3427) for more information.

Yahoo Group: The Group is an online forum and email list serve that provides informal, online communication between neighbors. It provides residents an opportunity to seek information, post announcements and share photos and files. This list serve is monitored daily to assure the stated Group rules are followed. To join, visit (<https://groups.yahoo.com/neo>).

Leisure World Club Trips

The next deadline for trip submissions is **Monday, July 22**. The trips listed below are sponsored by Leisure World groups and organizations and not by Eyre Leisure World Travel. These trips are **open to all residents**, not only members of the specific club. For information, contact the person listed with each trip. (Do not contact the Eyre Leisure World Travel or E&R office.) Leisure World clubs and organizations that want to be included in this column must provide a submission to the News by 3 p.m. on the Monday deadline. Due to space limitations, the Leisure World News reserves the right to edit or delete submissions. Email your trip information to lwnews@lwmc.com.

Please Note: Member/Non-Member pricing is at the discretion of the individual clubs.

July
30

Nationals Baseball Game
Washington, D.C.

Join the **Jewish Residents of Leisure World** on an evening bus trip to see the Washington Nationals play the Atlanta Braves at a home game on Tuesday, July 30.

The cost is \$45 per person and includes bus transportation and ticket to the game.

The bus departs Clubhouse II at 5 p.m. and ticket holders will disembark by an elevator that will drop them off near reserved seating. Seating overlooks the first base line, is under cover and close to restrooms and food concessions.

To reserve seats, send a check (payable to JRLW) to Dottie Chanil at (3829 Glen Eagles Dr., Silver Spring, MD 20906). Or, call Dottie at (301-871-1513) for more information. Tickets will be distributed as participants board the bus.

Aug.
22

Harris Crab House and Amish Market
Grasonville, MD

Join the **Going It Alone Club** for an all-you-can-eat feast of crabs, steamed shrimp, fried chicken, corn-on-the-cob, cole slaw, potato salad, desert, coffee, tea, soda and draft beer at Harris Crab House in Grasonville, Maryland. On the return trip home, we will stop at the Amish Market in Annapolis for some shopping.

The cost is \$83 for members, \$93 for non-members, and includes transportation, taxes, dining and driver gratuity.

The bus departs Clubhouse II at 10:30 a.m. and returns at approximately 5:30 p.m. No refund will be made after July 20 unless a replacement is made.

Sign up at Saturday Afternoon Live (SAL) in Clubhouse II from 1:30-3 p.m. For more information, call Joe Parker at (301-598-3457) or Sylvia Pachenker at (301-598-5325).

Aug.
31

National Book Festival
Washington, D.C.

Join the **Book Club Network** on a trip to the National Book Festival at the DC Convention Center in Washington, D.C. on Saturday, Aug. 31, Labor Day weekend.

This annual event, sponsored by The Library of Congress, brings the nation's top authors together to discuss their work. Supreme Court Justice Ruth Bader Ginsburg will be a featured guest discussing her book, "My Own Words." One hundred fifty other writers will be giving presentations including David McCullough, Barbara Kingsolver, Sara Paretsky and Henry Louis Gates Jr.

The bus departs Clubhouse II at 9 a.m. and returns to Leisure World at 4 p.m. The cost is \$35 a person for transportation only. Lunch is on your own. Tickets can be purchased from the Eyre Office in Clubhouse I or by calling (800-321-3973, Option 4). For more information, contact Verna Denny at (verhd@msn.com) or (301-598-1418).

Sept.
14

Capitol Steps
Washington, D.C.

NA'AMAT RBZ Club has planned a great trip on Saturday, Sept. 14, to see a 7:30 p.m. performance of the Capitol Steps. Join us for an evening of music and political satire at the Reagan Building.

The cost is \$75 per person and includes transportation and the show.

The bus departs Clubhouse II at 6 p.m. and returns at approximately 10:30 p.m.

Send your check, payable to NA'AMAT, to Esther Goldstein at (15000 Pennfield Circle, #302, Silver Spring, MD 20906). For questions call Esther at (301-847-9215).

Sept.
16-20

Pigeon Forge
and Smoky Mountains Shows, TN

All residents are invited to come with the **Going It Alone Club** on a five-day, four-night trip to Pigeon Forge and the Great Smoky Mountains of Tennessee.

The trip includes four breakfasts and four dinners, entrance to the Titanic Museum, five shows, free time in historic downtown Gatlinburg and a guided tour of the Great Smoky Mountains National Park.

The bus departs Clubhouse II at 8 a.m. on Monday, Sept. 16 and returns late afternoon on Friday, Sept. 20

The cost for double occupancy is \$480 per person for Club members; \$488 for non-members; and \$149 additional for single occupancy. Travel insurance is available.

Sign up at Saturday Afternoon Live (SAL) from 1:30-3 p.m. in Clubhouse II. No refunds will be made unless a replacement is made. For more information, call Joe Parker at (301-598-3457) or Sylvia Pachenker at (301-598-5325).

Nov.
11-13

Gaming and Sightseeing
Atlantic City, NJ

Join the **Tennis Club** on a two-night/three-day trip (Monday-Wednesday) to Atlantic City, New Jersey. For only \$205 per person double occupancy (\$90 more for single occupancy), you will get transportation in a modern bus, two nights lodging in the casino hotel, one dinner, two hot breakfasts and a casino bonus.

On your own in this tourist location, you can take in a show and enjoy Atlantic City's famous boardwalk.

Contact Sue Sandler at (240-242-3742) for more information and to make a reservation.

Attention, Travelers!

All Leisure World travelers please note that no group on travel can park more than 12 vehicles overnight/long-term in the Clubhouse II parking lot. Also, parking overnight/long-term is at the owner's own risk.

EYRE Leisure World Travel

Travel & Tour Department • (301) 598-1599 • Tuesday, Wednesday & Thursday 8:30 am-2 pm
Reservations can be made Monday through Friday, 8:30 am-5 pm by calling 301-854-6600 #4
For more detailed itineraries, please see the Eyre Representative at the Eyre Leisure World Travel Office.

DAY TRIPS

Museum Loop, DC

Mon., 8/5, 8:40 am-3:00 pm\$35.00 per person
Spend the day at the National Museum of the American Indian, American History Museum or Natural History Museum (New Fossil Hall). Transportation only.

Museum of the Bible, DC

Fri., 8/16, 9:05 am-3:00 pm\$60.00 per person
Admission to the museum and show tickets included.

Tony Bennett at Wolf Trap, VA

Sat., 8/17, 5:15 pm-11:15 pm.....\$145.00 per person
Garnering 19 Grammy Awards over a seven-decade career interpreting the Great American Songbook, "Bennett vocalizes American popular songs like nobody else can." Transportation and admission included.

US Tennis Open, NY

Fri., 8/30, 5:30 am-11:55 pm\$169.00 per person
'Love' tennis? Then this is the trip for you! Ground pass to all stadiums except Arthur Ashe included as well as transportation.

Library of Congress National Book Festival, DC

Sat., 8/31, 9:00 am-4:00 pm\$35.00 per person
Held at the Walter E. Washington Convention Center. Transportation only. *Expect enhanced safety and security measures when entering the Convention Center.*

Soar, Sip and Savor, Kent Island, MD

Sat. 9/7, 7:45 am-6:00 pm\$126.00 per person
The trip begins at Massey Air Museum, to view its collection of vintage working aircraft, and then to Crow Vineyard, a farm and vineyard to see the wine-making process and then a farm-to-table lunch at Crow's Haybarn. There will be time at the gift shop, too. Last stop is in historic Galena, Maryland, with time to browse the antique shops and to get a scoop or two of ice cream. Trip includes transportation, admission to the air museum and lunch.

DC Wharf

Mon., 9/16, 8:45 am-3:15 pm.....\$39.00 per person
Explore the DC Wharf! Shops, museums and more! Transportation only.

Maryland Wine Festival, Carroll County, MD

Sat., 9/21, 9:45 am-4:30 pm\$69.00 per person
Bring your taste buds! Enjoy the Maryland Wine Festival at the Carroll County Farm Museum complex. Transportation and admission to the festival included.

Sunfest at the Inlet, Ocean City, MD

Sat., 9/21, 7:45 am-9:00 pm\$60.00 per person
Held at the Ocean City Inlet, this event is enjoyed by the whole family with arts and crafts vendors, a variety of delicious food including Eastern Shore favorites. Enjoy nationally known entertainers all day. All the entertainment is free with the exception of the headline acts. Transportation only.

Museum Loop, DC

Thur., 10/3, 8:40 am-3:00 pm\$35.00 per person
Choose to spend the day at the Holocaust Museum, National History Museum or the National Gallery of Art. Transportation only.

9/11 Memorial & Museum, NY

Sat., 10/12, 7:00 am-11:45 pm\$120.00 per person
\$10 Cracker Barrel Gift Card included.

Glenstone Museum, Potomac, MD

Thurs., 10/24, 10:15 am-4:00 pm\$40.00 per person
Enjoy your day inside and outside at this unique museum! Transportation only.

NEW International Horse Show, DC

Thu., 10/24, 5:10 -11:00 pm\$85.00 per person
The annual Washington International Horse Show is one of the best events of its kind featuring more than 500 types of horses and all sorts of great equestrian events. Thousands of enthusiasts show up to the Capital One Arena every October to see something amazing. It won't take long to get hooked on the tradition of the Washington International Horse Show, which continues to boast a stunning display of equestrian heraldry that will leave you wanting more. Trip includes transportation and admission.

Skyline Drive, VA

Fri., 10/25, 8:00 am-4:35 pm\$99.00 per person
It's time for leaf peeping! Lunch at Skyland Restaurant.

Western Maryland Scenic Railroad

Sat., 10/26, 8:00 am-6:45 pm\$129.00 per person
Three-hour rail excursion from Cumberland to Frostburg. Lunch included.

Apple Festival Peddlers Village, PA

Sat., 11/2, 8:15 am-7:30 pm\$65.00 per person
Sample apple dishes, listen to live music and browse arts and crafts.

Spotlight On...

Bay Lighthouse Cruise, Annapolis

Wed., 10/23, 9:15 am-4:30 pm.....\$110.00 per person
Pass by three Lighthouses in the Chesapeake Bay. Narrated by a costumed lighthouse keeper. Boxed lunch served on board.

MULTI-DAY TRIPS

Castles of NY-1000 Islands

Aug. 26-29

Finger Lakes, NY

Sept. 22-25

Hudson Valley, NY

Sept. 25-27

Albuquerque Balloon Fiesta

Oct. 4-9 (fly/drive)

Ocean City Getaway, MD

Oct. 15-18

The Wright Experience

at Fallingwater, PA

Oct. 22-24

A Victorian Holiday, Cape

May, NJ

Dec. 1-3

Greenbrier, WV

Dec. 8-10

Country Christmas at the

Gaylord Hotel in Nashville, TN

Dec. 10-13

CRUISES

Royal Caribbean

Oct. 31-Nov. 8

Eight-night Southeast Coast
and Perfect Day Cruise

Anthem of the Seas, Cape

Liberty, NJ

Dec. 8-10

Caribbean Cruise

We can book any cruise line anywhere you want to cruise.

(All Trips depart from Clubhouse II)

Some trips require a certain amount of walking. The shoe symbol  provides an indication of how much walking may be involved.

Key:



Easy Walking



More Walking



A Lot of Walking

Eyre at Leisure World Travel Office, located in Clubhouse I, is a department of Eyre Bus, Tour & Travel. We offer a full service travel agency that specializes in airline reservations, cruises, group tours, vacation packages, hotel accommodations and auto rental. We have been providing "Excellence in Travel for 70 Years".

INCLEMENT WEATHER POLICY: Please call 301-598-1599 after 7 am on the day of a trip to find out if we have cancelled, postponed or are going. If a trip is cancelled, you will also receive a phone call from us once the office is open.

SPORTS, GAMES & Scoreboards

■ 10-Pin Bowling League

Huggers Knock Winners from First Place

by Rita Mastrorocco

The league is based on handicaps with averages for the bowlers ranging from 91 to 176. If you have not bowled in years, come out and join the fun.

The top league standings as of July 5, 2019 are: Huggers in first place, Winners in second place and the Pin Busters in third place.

Top scores for the week of June 2, 2019 are:

Scratch Game – Half and Half, 630 pins

Scratch Series – Lightnin Strikes, 1,753 pins

Handicap Game – Untouchables, 917 pins

Handicap Series – Untouchables, 2,655 pins

High Average Men – Bill Thomas, 169 pins

Scratch Game Men – Bill Thomas, 209 pins

Scratch Series Men – Chuck Martinez, 529 pins

Handicap Game Men – Bill Thomas, 255 pins

Handicap Series Men – Chuck Martinez, 706 pins

High Average Women – Chris Porter, 177 pins

Scratch Game Women – Cathy Flinchbaugh, 204 pins

Scratch Series Women – Jessica Stephens, 543 pins

Handicap Game Women – Cathy Flinchbaugh, 268 pins

Handicap Series Women – Cathy Flinchbaugh, 726 pins

Top scores for the week of July 5, 2019 are:

Scratch Game – Winners, 682 pins

Scratch Series – Huggers, 1,892 pins

Handicap Game – Winners, 964 pins

Handicap Series – Untouchables, 2,688 pins

High Average Men – Bill Thomas, 166 pins

Scratch Game Men – George Izumi, 244 pins

Scratch Series Men – George Izumi, 570 pins

Handicap Game Men – George Izumi, 299 pins

Handicap Series Men – George Izumi, 735 pins

High Average Women – Chris Porter, 176 pins

Scratch Game Women – Chris Porter, 188 pins

Scratch Series Women – Chris Porter, 512 pins

Handicap Game Women – Kazue Waller, 254 pins

Handicap Series Women – Brandy Moser, 708 pins

You do not need to be a good bowler to join. Come and join us for fellowship, fun and easy exercise. There is no long-term commitment.

The league bowls every Friday morning with practice starting at 9:50 a.m. at Bowl America, located at 1101 Clopper Road in

Gaithersburg.

The cost for the three games of bowling, the use of bowling shoes and balls and unlimited cups of coffee is only \$10. If interested in joining, call Rita at (301-814-9196).



■ Golf Club

June and July Results

Compiled by Rita Molyneaux

June 25, 2019

9-Hole Ladies Results Mystery Hole #14

- (tie) Mary Lee Amato and Barbara Peters 28
- (tie) Jan Jaret and Ruth Hutchins, 29
- (tie) Ruth Cougnet, Janet Danziger, Marilyn Zeiberg, Susan Newman, Julie Repeta, Clara Brincefield, Betty Devers, 30

June 26, 2019

Men's ABCD Man in Box

- *1. Jerry Clark, Malcolm Caponiti, Peter Porrello, 119
- *2. Doug Cornish, Semoon Chang, Joe Boland, Tony Marotta, 119
3. John Frensilli, Joe Powell, Joe Crocetta, Richard Falck, 120

*Match of Cards was used to determine the winner.

June 27, 2019

18-Hole Ladies Individual Low Net

1. Mary Ko, 65
2. Christa Storm, 66
3. Yoneko Ramsey, 71

June 27, 2019

Men's Club 2019 Championship Flight

Winner – Barry Falgout
Runner Up – Mike Makfinsky

First Flight Champion

Winner – Jack Frensilli
Runner Up – Doug Cornish

Consolation Flight

Winner – Joe Powell
Runner Up – Marty Kreiss

June 28, 2019

Twi-Lite

1. Sperry Storm, Christa Storm, Jack Frensilli, Kathy Frensilli (Under)
2. (tie) Mary Lee Amato, Brenda Curtis-Heiken, Semoon Chang, Charlie Brotman, Kevin Ruane, Wendy Flannery, Doug Brasse, Abigail Murton (1 under)

July 2, 2019

9-Hole Ladies Results Lone Ranger Tournament

1. Young Sook Lee, Kazue Waller, Connie Park, Doris DeSantis, 61
2. (tie) Mary Ellen Coffey, Kay Heier, Christine Petersen, Arillian Navy, Marilyn Zieberg, Marilyn Sebastian, Lois Kutan, Shirley Gilmore, 65

■ Tennis Club

Club Meets on First Thursday of Month

by Alfonso Holston

Come join the Club for its monthly meetings on the first Thursday of each month at 7 p.m. in Clubhouse II. The next meeting is Thursday, Aug. 1.

The Club invites all residents to come out to round robin and advance play. Round robin is played on Tuesdays and Fridays from 9:30-11 a.m. Advance play is on Sundays, Wednesdays and Thursdays, also from 9:30-11 a.m.

Parade

The Tennis Club joyfully participated in Leisure World's July 4 parade. The group of walkers consisted of Club members, grandkids and one dog.

Members happily distributed tennis balls, which had been provided by the Aspen Hill Tennis Club, to parade onlookers.



Members of the Tennis Club carry tennis balls to pass out to onlookers at the July 4 parade. Photo by Fred Shapiro

U.S. Sanctions Hit Chess Federation President

by Bernie Ascher

While not as sensational, front-page news as the Cold War encounter between America's Bobby Fischer and Russia's Boris Spassky in 1972, U.S. sanctions imposed on Kirsan Ilyumzhinov, president of the International Chess Federation, are a stark example of how chess can be swept into international politics.

Ilyumzhinov was hit with U.S. sanctions in November 2015 "for materially assisting and acting for or on behalf of the government of Syria," according to press reports.

A multi-millionaire and former president of the Russian Republic of Kalmykia (Europe's only Buddhist country), Ilyumzhinov is also close to Russia's President Vladimir Putin. Beginning in 1995, he was president of the Fédération Internationale des Échecs (FIDE), the French name for the International Chess Federation, for 23 years.

Originally founded in Paris, France, in 1924, FIDE is now located in Lausanne, Switzerland, following a decision by the 2018 presidential board meeting in London to move from Athens, Greece, to Lausanne.

As President of Kalmykia, Ilyumzhinov "made chess a compulsory school subject and built a special village, called Chess City, to host international tournaments," according to London's Financial Times. In Elista, the capital of Kalmykia, he built the largest Buddhist temple in Europe, "The Golden Temple," which opened in December 2005.

He first drew international attention in the late 1990s, claiming in a television appearance that he had been abducted by aliens and visited another planet. In numerous interviews, Ilyumzhinov has described his abduction by space aliens – and their invention of chess.

In September 2010, as president of FIDE, he wrote to New York Mayor Michael Bloomberg, offering to construct an international chess center near the site of the Twin Towers. He offered \$10 million to buy the land, outbidding Donald Trump, who offered \$7.5 million.

The building, which was planned to be built in the form of a King chess piece, would have housed a free chess school for children, facilities for national and international tournaments and other educational and charitable activities.

Ilyumzhinov played chess with Libya's Muammar Gaddafi in Tripoli in 2011, during a NATO bombing raid. Following the imposition of sanctions, he said in an interview by Russia's Izvestia newspaper, "I was hit by sanctions because of the game of chess with Gaddafi."

"We support all members of FIDE,

all 186 countries, including Syria," he added. "I have met with Bashar Assad. We have built a chess center. I was accused [of providing] financial support to the Government of Syria. But we consider the financial assistance that we sent them a thousand chess boards and three thousand chess textbooks for schoolchildren, translated into Arabic, then it is – utter nonsense."

In May 2018, the Swiss bank UBS closed FIDE's account, indicating that it could not do business with FIDE while Ilyuzhinov's name was still on the U.S. sanctions list. No other bank would open an account for FIDE.

FIDE elected a new president in October 2018: 47-year-old Arkady Vladimirovich Dvorkovich, a Russian politician and economist, who was Russia's Deputy

Prime Minister for six years until May 2018.

Chess at Leisure World can be played without international complications. In



the diagram on this page, White has an advantage in the number of Pawns. It is Black's turn to move. What is Black's best move?

The solution follows the usual message that the Chess Club meets on Mondays, Wednesdays, and Fridays from 1-4 p.m. in Clubhouse II. Membership is free. For further information, call

Bernie Ascher at (301-598-8577).

SOLUTION: Rook at e8 moves to e1. Checkmate!

So, do not wait for removal of sanctions. Do not wait for a New York chess building. Do not wait for proof of alien invention of chess. Play chess now!

FREDRICK A. ISAACS, M.D., P.C., FACS BOARD CERTIFIED OPHTHALMOLOGIST

Latest Advances in Cataract Surgery including the Restor® & LenSx (Femtosecond)
Treatment of Glaucoma & Macular Degeneration
(Avastin, Lucentis & Eylea Injections)
Complete Exams and Contact Lens Exams

Full Service Optical Shop Glasses, Sunglasses, Contact Lenses

We offer the latest diagnostic equipment for assessment of retinal disease and glaucoma.

ON PREMISES: Visual Fields, Cirrus HD - OCT, Fluorescein Angiography, Stereo Disc Photographs, Corneal Pachymetry and Topography.



**3801 International Drive, Suite 208
Silver Spring, MD 20906
301-598-8500**

LEISURE WORLD PLAZA PROFESSIONAL BUILDING

EMERGENCY APPOINTMENTS AVAILABLE

FLOORMAX**YOUR FLOORING
PROFESSIONALS
SINCE 1985****FREE**

- In-home consultation
- Pad upgrade
- Standard furniture moving

STAINMASTER**Whole House of Carpet****INSTALLED** (Includes **FREE** delivery & pad.)

Up to 750 sq. ft.

Starting at **ONLY****\$1999***

(*See store for details and selection.)

CLEO
HOME**now with****WILL NOT STAIN, WILL NOT FADE, WILL NOT
WEAR OUT, EASY CARE AND MAINTENANCE!**10' x 10' Kitchen Floor
Approximately**\$999***

Installed

(*See store for details and selection.)

**LIFE
PROOF**
(MESSES, KIDS, PETS
& ODORS)**WATER
PROOF****LIFETIME
WARRANTY****Aspen Hill Center**

13629 Connecticut Ave.

(301) 460-4100**WWW.FLOORMAX.US.COM****GUARANTEE****110%**
FLOORMAX

*See store for details

\$250 OFF!

*Any Purchase of \$3000 or More!

*Limited time only, cannot be combined with any
other offer. Must be presented at time of purchase.**Carpet | Hardwood | Ceramic |
Laminate | Vinyl****Wednesday Night Chicago Bridge**

Compiled by Abigail Murton

June 26, 2019

1. Abigail Murton and Doug Brasse, 6,140
2. Joyce and Dick Riseberg, 3,760
3. Bruce McKay and Jack Looney, 2,640

July 3, 2019

1. Linda Mihm and Norm Salenger, 3,330
2. Dottie Hurley and Betty Hecht, 2,450
3. Joyce and Dick Riseberg, 2,320
4. Ann and Joe Boland, 2,030

Thursday Afternoon Ladies Bridge

Compiled by JoAnn Gellman

June 27, 2019

1. Vicky Shaz, 2,820
2. Delores Shaprio, 2,620
3. Evelyn Armstrong, 2,620

July 4, 2019

No game played.

Friday Bridge

Compiled by Shirley Rosenhaft

June 21, 2019

1. Sunny Levin, 4,050
2. Mort Faber, 3,360
3. Barbara Marcus, 2,720
4. Janet Danziger, 2,370

June 28, 2019

1. Betty Hecht, 3,870
2. Shirley Rosenhaft, 3,660
3. Barbara Marcus, 3,430
4. Sunny Levin, 3,020

July 5, 2019

No game played.

**Leisure World®**

55+ "Resort" Community

"Country Club Feel"

"Authorized Leisure World® Specialist"

**55Places.com****Top 10 Best Value Communities****#1 Leisure World, MD**

Since 2017 Results

Sold: 39+ Listings: 27+ Rentals: 4
Checkout my Zillow 5 Star Ratings at**doubrasse.com****Please put my Winning Strategies to work for
You, and Your Friends, Neighbors or Relatives**Douglas Brasse Cell: (301) 448-8708 dbrasse@weichert.com
Office Phone :301-681-0550 doubrasse.com
Aspen Hill/ Leisure World Plaza
3816 International Drive
Silver Spring, MD 20906Leisure World® is a registered trademark owned by RRLH, Inc.
Doug Brasse is authorized by RRLH, Inc. under license to use the Leisure World®
service trademark**PEDESTRIAN SAFETY DURING SUMMER****Pedestrians are reminded to:**

- Wear brightly colored clothing when walking before dawn and after dusk.
- Always carry a form of identification that includes their name, address, any medical condition and the name of a person to contact in case of an emergency.
- Be particularly attentive of vehicular traffic when crossing at all intersections and crosswalks.

Sports, Games & Scoreboards In Brief

Bid Whist: Do you know what Sport the Kitty, Boston Time and Rise and Fly all mean? If you like to play Bid Whist, then meet us on Mondays at 6 p.m. in the Clubhouse II Multi-purpose Room. Questions: Call Jessie at (314-374-4501).

Bocce: Games are played on the first and second Fridays of the month at 10 a.m. at the bocce court, located outside the Clubhouse I Terrace Room restaurant. The game is easy to learn, with no special skills required. There is no sign up; just show up (weather-permitting).

Bridge:

• **Tuesday and Friday Duplicate Bridge** games are at 7 p.m. in Clubhouse I. New players with partners are welcome. Hand records and results are available after the game on (thecommongame.com). Results are also posted on (cuebid.com). If in need of a partner, call Shirley Light at (301-598-6611) at least 24 hours before the game. Questions? Call Aaron at (301-598-3870).

• The **Wednesday Night Chicago Bridge Group** is looking for new members. The group meets every Wednesday in Clubhouse I. Play begins promptly at 6:45 p.m. Bring a partner and be ready for a few hours of friendly games. Questions? Call Doug at (301-448-8708).

• **Men's Bridge** seeks players. We meet Mondays and Thursdays at 12:30 p.m. in Clubhouse II. No partner needed. Women welcome. Call Alan Levine at (301-288-7349).

• **Thursday Ladies Bridge** welcomes more card players. If interested, call JoAnn Gellman at (301-351-2391).

Chess: Free chess lessons on Mondays for beginners or "rusty" players. Call Steve Harvith at (301-801-4693) or Lark Keller at (301-219-5955) for appointments. The Chess Club meets every Monday, Wednesday and Friday from 1-4 p.m. in Clubhouse II. Membership is free.

Cribbage: We meet for 150 minutes of competitive fellowship on Thursdays at 9:30 a.m. in Clubhouse II. We have cards and cribbage boards, and would be pleased to teach you the game. It is a mixture of rummy and pinochle and is pure fun. (We do not even keep score.) For more information, call George at (301-598-9747) or Bill at (301-598-7270). We look forward to seeing you.

Duckpin Bowling: Join us for the Duckpin Mixed Bowling League Mondays at 12:30 p.m. at White Oak Bowling Lanes (11207 New Hampshire Ave., Silver Spring). We need bowlers of all skill levels and will welcome you into our enthusiastic group. We carpool regularly, so non-drivers need not stay away. Call Lisa Zarou at (301-814-0029) or Flora Wolf at (301-598-5807) to join as a substitute or regular bowler.

Jigsaw Puzzle: There is a jigsaw puzzle table in the Clubhouse II lobby. Feel free to work on it at your leisure.

Mah-jongg: Learn how to play mah-jongg. Call (301-598-3438).

Mind-Body Exercise Club: Members meet every Thursday afternoon from 2-3 p.m. in the Clubhouse II Activity Room to study and practice mind-body exercises under a leader. Interested Leisure World residents can join the club by paying a \$5 per person initiation fee. If you have any questions, call Judy Menkes at (301-847-9643).

Ping-Pong Club: Get healthy exercise and camaraderie playing ping-pong. The club meets Mondays from 3-5 p.m. and Wednesdays and Fridays from 1-3 p.m., in the Clubhouse II Ping-Pong and Meeting Room. Drop in anytime during that period. Some experience preferred. Questions? Call Julie at (301-598-5424) or email at (julie12401@netscape.net).

Pinochle Players: Experienced Pinochle players wanted. We play Mondays from 6:30-8:30 p.m. in Clubhouse II. If interested, call (301-775-7238) or (301-598-7064). If you are interested in learning, you are welcome to observe.

Poker:

• **Poker Game** openings are available at the Greens, Thursdays from 7-10 p.m. No prior experience necessary. If interested, call Marcel at (240-486-6205).

• **Men's Poker** is seeking new members. Play is daily, beginning around 9 a.m. in the Game Room in Clubhouse II.

• **Play Poker** Mondays and Thursdays from 1 p.m.-4:30 p.m. in the Clubhouse II Game Room. We play hi/low only (two winners). Call (301-598-4331) or (301-434-6823) or come observe.

Thursday Night Poker meets every Thursday from 6-9 p.m. in Clubhouse II. We play hi/lo, with or without wild cards, dealer's choice. All are welcome. Leisure World residents preferred. Call Dave at (301-598-7064) for information or just come and join us.

Scrabble: Please join us at Clubhouse II on Tuesdays at 12:30 p.m. for a game of Scrabble. Boards are available. Call Arlyne at (301-438-7442) if you are interested in playing.

Volleyball for Everyone. If you are a LW resident who wants to enjoy the inviting warm water of the social pool, join your peers in social volleyball on Wednesdays, Fridays and Saturdays at 3 p.m. No skills needed, just come and have fun. Competitive volleyball games are played on Monday and Thursdays from 6-7:30 p.m. This game is for long-term, skilled players who want the intensity of competition and rarely miss the games. If you don't have a yearly indoor pool pass, a \$3 ticket good for one pool session may be purchased at the Clubhouse II E&R office. For more information, email Laurie Burdick at (lgburdick@aol.com).

Foot & Ankle Specialists of the Mid-Atlantic



*Now the preferred podiatry practice
at MedStar Health at Leisure World*

End your toes woes!

Walk pain-free!

Visit Dr. K at MedStar Health
at Leisure World,
3305 N. Leisure World Blvd.,
for treatment of your toes,
heels, ankles and feet.

Dr. Freedman & Dr. Kathrotiya-Mago

Leisure World Plaza Professional Building

3801 International Dr. • Suite 204 • Silver Spring, MD 20906

www.footandankle-usa.com

Call today: (301) 598-0130



Kitchen & Bath Remodeling

301-598-8400

SERVING LEISURE WORLD SINCE 1988

**July SPECIAL- free bathroom vanity top &
faucet with any Tub to Shower Conversion.**

Price match guarantee on all projects.



MHIC# 36674



CLASSES & Seminars

Sign-up will be taken for newly advertised classes beginning on the Tuesday after the date of the edition of Leisure World News in which it appears. All sign ups begin at 8:30 a.m. in either Clubhouse I or II as noted in the class description. Residents can register for themselves and two other residents. **Please bring your Leisure World ID.**

If required enrollment is not met five days prior to the start date, the class will be cancelled.

*****Please note fees for non-residents: add \$10 for 1-6 session classes and \$20 for classes of 7 or more sessions.**

Payment can be made by check or credit card (MasterCard, VISA or Discover); no cash is accepted. Checks *must* be made payable to Leisure World of Maryland Corp. Please sign up in advance of the starting date of the class since instructors need to know how many will participate. **Note: Registration will not be accepted nor refunds issued after the completion of two sessions!**

Leisure World does not discriminate on the basis of race, color, national or ethnic origin in admission policies, education policies or programs.

RELIGION AND PHILOSOPHY

The Underlying Unity of Eastern Philosophical Thought – Vedanta, a CLL- and Friends of India Association-sponsored course: Vedanta, the world's oldest philosophy still practiced today, speaks of an eternal religion of which all the world's religions are a part.

This lecture series, led by Swami Chibrahmananda (Swami C), will explore the underlying metaphysics of this ideal and its practical applications within the context of one's own religion. It will discuss the multitude of tools and practices for deepening one's relationship with the Divine. The primary focus will be on principles and shared truths as opposed to dogmas and creeds. It will borrow from the scriptures of many of the world's religions to form a cohesive idea of the underlying unity.

The lecture topics include: Vedantic Eden, The Goal and Its Attainment, Principles of Practice, Evolving to One and concluding with a summary overview.

Class meets Mondays, Aug. 5-Sept. 16 (no class Aug. 19 or Sept. 2), 10-11 a.m. **Fee: \$15. Register at Clubhouse I.**

For more information about the Center for Lifelong Learning (CLL) and its instructors, visit (www.cllmd.com).

EXERCISE

NEW – Senior Sneakers:

Get up and go with a safe, heart-healthy cardio workout that is gentle on the joints. The workout includes easy-to-follow low-impact moves and upper-body strength training. Have fun and move to the music through a variety of exercises designed to increase your cardio fitness level, strength, range of movement, and activities for daily living. Bring your hand-held weights and work at your own pace.

Class meets Mondays (with Shirley), Aug. 5-Sept. 16 (no class Sept. 2), and Thursdays (with Sue), Aug. 8-Sept. 12, 9-9:45 a.m. You can take the class on Mondays or Thursdays, or sign up for both days. **Fee: \$38, one day per week; \$63 for both days. Register at Clubhouse II.**

NEW – Mild Exercise with Shirley:

All exercises, seated or standing, are led by instructor Shirley Lloyd.

Class meets Tuesdays, Aug. 6-Sept. 10, and Wednesdays, Aug. 7-Sept. 11, 11-11:45 a.m. You can take the class on Tuesdays or Wednesdays, or sign up for both days. **Fee: \$38, one day per week; \$63 for both days. Register at Clubhouse II.**

NEW – Chair Yoga with Robin, Wednesdays: Age well. Prevent or diminish the chronic degenerative disease processes that frequently accom-

pany aging. Gentle, yet effective, movements done while sitting in a chair. Increase joint mobility, balance, flexibility, strength, tone, circulation of blood and lymph, and improve breathing. Optional standing balance exercises included. Relaxing and fun! Mindfulness training is introduced and basic holistic lifestyle habits discussed.

Instructor Robin M. Hartman, C-IAYT, CHHC, RYT, PTA, is licensed to perform physical therapy in the state of Maryland. She is also a certified holistic health coach, registered yoga teacher and certified yoga therapist. She will answer questions after class or can be reached at (240-350-8820).

Class meets Wednesdays, Aug. 7-Oct. 2 (no class Aug. 14), 2-3 p.m. **Fee: \$110. Register at Clubhouse II.**

NEW – Chair Tai Chi with Robin:

This tai chi program is a simplified form of nine

basic movements that can be repeated and performed with varying levels of complexity either sitting or standing. The program is directed at improving balance; increasing strength, tone and range of motion in ankles, knees, hips and trunk; improving circulation of blood and lymph; promoting a general sense of well being and energy and decreasing muscle pain. The program is also good for quieting the mind, soothing anxiety and improving mood.

Instructor Robin M. Hartman, C-IAYT, CHHC, RYT, PTA, is a certified holistic health coach, licensed to perform physical therapy in Maryland and certified in tai chi for arthritis and tai chi for balance. She is available after class to answer questions or can be reached by phone at (240-350-8820).

Class meets Wednesdays, Aug. 7-Oct. 2 (no class Aug. 14), 3:30-4:30 p.m. **Fee: \$110. Register at Clubhouse II.**

NEW – Therapeutic Yoga with Robin:

This movement class on the floor will facilitate greater ease of movement and comfort in the body. Inspired by the work of Moshe Feldenkrais, Joseph Pilates, yoga practitioners,

Robin McKenzie and others, the class will include slow stretching, repetitive movements and breath awareness.

Participants should bring a mat, blanket and small pillow or folded towel (depending on how comfortable the participant is in putting their head on the floor when lying down). Participants should also dress in layers as the floor may be cold; air temperature in the room can be adjusted as needed to keep participants warm).

Explore your own body and movement patterns to increase your range of motion and ease in movement to reduce pain. Try it! It can change your life.

Instructor Robin M. Hartman, C-IAYT, CHHC, RYT, PTA, is licensed to perform physical therapy in the state of Maryland. She is also a certified holistic health coach, registered yoga teacher, and certified yoga therapist. She will answer questions after class or can be reached at (240-350-8820).

Class meets Fridays, Aug. 23-Oct. 25 (no class Aug. 30 or Oct. 11), 3-4 p.m. **Fee: \$110. Register at Clubhouse II.**

NEW – Beginner and Advanced Tai Chi: A must for seniors! Tai Chi builds strength in muscles and bones, promotes a healthy heart, and is fun and easy to do. It improves endurance, flexibility, breathing, and circulation.

The class begins with 30 minutes of stretching and muscle strengthening exercises that promote greater agility, better posture and strengthen muscles. This is followed by meditation for 10 minutes and Tai Chi for 20 minutes. Tai Chi is the best way to improve balance and coordination, thereby decreasing the risk of falling and fractures.

Class meets Tuesdays and Thursdays, July 30-Oct. 17 (no class Tuesday Oct. 1; make-up Wednesday, Oct. 2), 9:30-10:30 a.m. The instructor is Steve McCleary.

For more information, call Maureen McCleary at (301-598-1145). **Fee: \$45 for one day per week; \$75 for both days. Register at Clubhouse II.**

Ba Duan: This is the world's oldest exercise for seniors and those who need to restore a normal, optimum state of health. Participants will learn to combine joint movement and breathing to improve balance and to augment core strength.

Limited enrollment. Class meets Mondays, July 22-Sept. 23, 4-5 p.m. **Fee: \$20. Register at Clubhouse II.**

Tap Dancing in a Chair with Carol – a New Approach to Tap: If you are an experienced tapper and miss it or a beginner who always wanted to tap, but right now your body says, “no,” this is the class for you. For experienced tappers, this will be a “remember when” and a “do I ever love tapping again”; for beginners you'll enjoy an easy start with the basics, and before long you'll feel like a real tapper. (Experienced tappers who don't need a chair are welcome to take the class, but all students work from a chair.)

Each class is two hours; the first hour will focus on beginning tap terms and combinations, and the second hour on more advanced techniques. Students are welcome and encouraged to participate in either or both hours of instruction.

Carol began taking tap lessons at age four, continuing through high school when she taught tap to offset the cost of lessons, and performed in recitals and community theater. In college, she taught dance for the Physical Education Department and, in the summer, continued to perform in local theater. While her career took her in another direction, her love affair with dance has never ended. If you have questions, give Carol a call at (301-598-5980).

Class meets Thursdays, July 25-Aug. 29, 3-5 p.m. **Fee: \$40. Register at Clubhouse II.**

Gentle Yoga – Wednesdays and Saturdays with Marilyn: Yoga is a holistic system that combines movement, posture, breath, and relaxation techniques to improve overall health and well-being physically, mentally, and spiritually. A consistent yoga practice has been shown to increase mobility, strength, and flexibility, and to provide skills to cultivate a peaceful mind in the face of life's

stresses and challenges.

This class is designed for individuals with some ability to get up and down off the floor and can be adapted according to the need of the practitioner. Beginners and ongoing students are welcome. Bring a yoga mat or blanket to the first class.

Class meets Wednesdays, July 24-Sept. 25 and/or Saturdays, July 20-Sept. 21, 9-10:15 a.m. **Fee: \$84 for one day, \$145 for both days. Register at Clubhouse I.**

WATER EXERCISE

NEW – Water Exercise with Nancy: Participants will gain strength, stamina and tone from this cardio class. Dumbbells are used, although they are not required, and are available for purchase from the instructor.

Class meets Tuesdays, Aug. 6-Sept. 10, and Thursdays, Aug. 8-Sept. 12, 11 a.m.-noon. You can take the class on Tuesdays or Thursdays, or sign up for both days. **Fee: \$38, one day per week; \$63 for both days. Register at Clubhouse II.**

NEW – Non-impact Fusion Water Exercise with Shirley or Sue: This class is held in the round leisure pool (warm water). Dance, yoga poses, and cardio movements are all fused together to give students an awesome, fun class. Participants will improve their posture, balance, flexibility and muscle strength.

Class meets Tuesdays, Aug. 6-Sept. 10, and Thursdays, Aug. 8-Sept. 12, 1-2 p.m. You can take the class on Tuesdays or Thursdays, or sign up for both days. **Fee: \$38 for one day per week; \$63 for both days. Register at Clubhouse II.**

NEW – Aqua Fit with Shirley: This unique class blends the best of both worlds using water aerobics and yoga. Water aerobics is done in the lap pool for 30 minutes, focusing on cardio and strength. The class then moves to the social warm water pool and finishes up with yoga stretches that focus on balance and posture.

Class meets Wednesdays, Aug. 7-Sept. 11, from 1-2 p.m. **Fee: \$38, one day per week; \$63 when taken with one day of another water class. Register at Clubhouse II.**



*Hearing is one of the joys of life. **Don't neglect it!***



From left: Kathryn Balestino-Estes, AuD., Dr. Heather Schwartzbauer, M.D., Allyson Bull, AuD., Dr. Nicholas Mehta, M.D., Dr. Cynthia Chrosniak, M.D.

We have a team of audiology doctors and otolaryngology physicians who work together in two convenient locations to help you.

MEET OUR AUDIOLOGISTS

Dr. Kathryn Balestino-Estes and Dr. Allyson Bull

- Comprehensive and personalized evaluations
- The latest digital hearing instruments from leading manufacturers
- Solutions to fit your hearing needs, lifestyle, and budget
- Many insurance plans offer hearing aid benefits
- Financing Plans available

We are conveniently located in the Professional Building in the Leisure World Shopping Center above Sandy Spring Bank.

LEISURE WORLD PLAZA
3801 International Drive
Silver Spring, MD 20906,
Suite 206

PROFESSIONAL OFFICE BUILDING
18111 Prince Phillip Drive
Olney, MD 20832, Suite 224

CALL TODAY TO SCHEDULE AN APPOINTMENT!

301-774-0074

WWW.MONTGOMERYCOUNTYENT.COM

\$300 Off
a pair of digital hearing aids

\$400 Off
a pair of digital hearing aids when you upgrade your existing aids



Montgomery County ENT
EAR, NOSE AND THROAT SPECIALISTS

Drs. Chrosniak, Schwartzbauer and Mehta, M.D.

The Karen Rollings Team



Karen Rollings



Kathy Workman

Berkshire Hathaway HomeServices PenFed Realty

301-924-8200

www.TheKarenRollingsTeam.com



BERKSHIRE HATHAWAY | PenFed Realty
HomeServices

3410 N High St
Olney, MD 20832
301-260-7700



Recent Solds "Around the World"!

Address	Subdivision	Type	Beds	Baths	Asked	Got	Subsidy
2901 S LEISURE WORLD BLVD #518	Creekside	Unit/Flat/Apartment	2	2	\$360,000	\$350,000	\$0
3310 N LEISURE WORLD BLVD #805-6	Fairways North	Unit/Flat/Apartment	2	2	\$249,900	\$230,000	\$0
3310 N LEISURE WORLD BLVD #518	Fairways North	Unit/Flat/Apartment	2	2	\$160,000	\$158,000	\$1,580
3310 N LEISURE WORLD BLVD #901	Fairways North	Unit/Flat/Apartment	3	2.5	\$315,000	\$275,000	\$0
3310 N LEISURE WORLD BLVD #815-6	Fairways North	Unit/Flat/Apartment	2	2	\$155,000	\$147,500	\$0
3429 S LEISURE WORLD #1G	Leisure World	Unit/Flat/Apartment	1	1	\$61,000	\$71,500	\$0
3560 CHISWICK CT #35-C	Montgomery Mutual Coop	Row/Townhouse	2	3	\$170,000	\$170,000	\$0
3577 S LEISURE WORLD BLVD #21-D	Montgomery Mutual Coop	Row/Townhouse	2	3	\$169,990	\$169,990	\$0
3804 GLEN EAGLES DR	Regency	Detached	4	2.5	\$724,900	\$700,000	\$0
3603 GLEN EAGLES DR #6-2C	Rossmoor Mutual #7	Unit/Flat/Apartment	2	1	\$124,900	\$124,000	\$0
15100 INTERLACHEN DR #4-424	The Greens	Unit/Flat/Apartment	2	2	\$249,900	\$245,000	\$750
15107 INTERLACHEN DR #2-108	The Greens	Unit/Flat/Apartment	2	2	\$155,900	\$155,900	\$9,000
15107 INTERLACHEN DR #2-122	The Greens	Unit/Flat/Apartment	2	2	\$179,900	\$172,000	\$0
15115 INTERLACHEN DR #3-112	The Greens	Unit/Flat/Apartment	2	2	\$185,000	\$180,000	\$0
3005 S LEISURE WORLD BLVD #216	Turnberry Courts	Unit/Flat/Apartment	3	2	\$374,900	\$367,500	\$300
3005 S LEISURE WORLD BLVD #314	Turnberry Courts	Unit/Flat/Apartment	2	2	\$219,500	\$219,500	\$0
3210 N LEISURE WORLD BLVD W #312	Vantage Point West	Unit/Flat/Apartment	2	2	\$260,000	\$260,000	\$0
3210 N LEISURE WORLD BLVD #912	Vantage Point West	Unit/Flat/Apartment	2	2	\$299,900	\$295,000	\$0



UNDER CONTRACT!!!

3100 N Leisure World Blvd, #1002

Updated kitchen and enclosed balcony
overlooks golf course, pond, & tree tops!



UNDER CONTRACT!!!

3100 N Leisure World Blvd, #1026

Spacious & updated 2 BR, 2 FBA condo!
Enclosed balcony with incredible views!



SOLD!!!

3480 Chiswick Court, #41-E

Gorgeously updated 2 level co-operative!
Stainless steel appliances & granite counters!

Need New Carpet?

Serving Montgomery County for 30 years! We are the company for all your flooring needs. Carpeting, Hardwood, Laminate, Ceramic, Marble, Commercial, Residential. We do it all! We carry major brand names in carpeting and hard surface flooring.

Trust our experience and knowledge of the industry.

301-924-7331 18167 Village Center Drive
Olney, MD 20832
(in the Olney Village Center)

www.carpetandvacuumexpo.com

CARPET & VACUUM
EXPO

\$100
off installation!
301-924-7331

only for purchases over \$1000. Offer not valid with any other offers.

CALENDAR *of Events*

**Dial 301-598-1313
for recorded Daily Events**

Friday, July 19

Clubhouse I

9:00 a.m. LW Cannabis 101: Maryland Medical Cannabis Commission Registration
10:00 a.m. Book Club Network: Bookies
11:00 a.m. More of the Most Stunningly Beautiful Music Ever Written and How to Listen to It Class
12:15 p.m. Kiwanis Club
1:00 p.m. Cannabis 101 Club: Cannabis Health and Wellness Fair
1:30 p.m. Watercolor Any Level Art Class
2:00 p.m. Town Meeting Organization
3:00 p.m. Hispanos de LW: Bingo
7:00 p.m. Friday Duplicate Bridge

Clubhouse II

12:00 p.m. Lions’ Charity Golf Tournament Awards Luncheon
1:00 p.m. Zumba Gold Class
1:00 p.m. Ping-Pong Club
1:00 p.m. Chess Club
1:00 p.m. Friday Bridge Club
7:00 p.m. Baby Boomer Club: Movie

Saturday, July 20

Clubhouse I

9:00 a.m. Gentle Yoga Class
10:00 a.m. Rossmoor Art Guild Open Studio
1:00 p.m. Arts in Motion: “Authors In Mind”

Clubhouse II

9:15 a.m. Shabbat Service
11:00 a.m. Pickleball Club
1:00 p.m. Going It Alone Club
7:00 p.m. Sock Hop Group

Sunday, July 21

Clubhouse I

No Scheduled Activities.

Clubhouse II

11:30 a.m. Pickleball Club

Monday, July 22

Clubhouse I

9:15 a.m. Stretch, Tone and Strength Training Class
10:00 a.m. Garden and Environmental Club
10:30 a.m. Stretch, Tone and Balance Class
1:00 p.m. Oils and Acrylics Art Class
1:30 p.m. Book Club Network: Fall Readers
1:30 p.m. Leisure World Chorale
6:00 p.m. Newcomers Duplicate Bridge
7:00 p.m. Bingo

Clubhouse II

9:00 a.m. Senior Sneakers Class
10:30 a.m. Zumba Gold Class
11:00 a.m. Chair Yoga Class
12:30 p.m. Men’s Bridge
1:00 p.m. Chess Club
1:30 p.m. Computer Learning Center: Android Help Session
2:00 p.m. Line Dance Class
3:00 p.m. Line Dance Class
3:00 p.m. Ping-Pong Club

4:00 p.m. Ba Duan Exercise Class
5:30 p.m. Pickleball Club
5:30 p.m. Model Railroad Club Operating Session

Tuesday, July 23

Clubhouse I

9:30 a.m. Any Medium Art Class
10:00 a.m. Stepping On Follow-Up Session
10:00 a.m. CLL Course: Advanced Conversational Spanish
1:00 p.m. CLL Course: Intermediate Conversational Spanish
1:00 p.m. Rossmoor Art Guild Open Studio
2:00 p.m. Book Club Network: Suspensers
5:00 p.m. Lawn Bowls Club
7:00 p.m. Trivia Club
7:00 p.m. Duplicate Bridge

Clubhouse II

9:30 a.m. Beginner and Advanced Tai Chi Class
10:00 a.m. LW Apple Club
12:30 p.m. Pickleball Club
12:30 p.m. Scrabble Group
1:00 p.m. Non-impact Fusion Water Exercise Class
1:30 p.m. Comedy and Humor Club
4:00 p.m. Pickleball Club

Wednesday, July 24

Clubhouse I

9:00 a.m. Gentle Yoga Class
10:00 a.m. Applied Principles – Any Medium Art Class
1:00 p.m. Oils, Acrylics and Miniatures Art Class
2:00 p.m. LW Green
6:45 p.m. Chicago Bridge

Clubhouse II

8:00 a.m. Pickleball Club
10:00 a.m. Zumba Gold Class
1:00 p.m. Chess Club
1:00 p.m. Ping Pong Club
5:15 p.m. Pickleball Club
5:30 p.m. Model Railroad Club Operating Session

Thursday, July 25

Clubhouse I

9:15 a.m. Stretch, Tone and Strength Training Class
10:00 a.m. Painting Is for Everyone Basic Watercolor Art Class
10:30 a.m. Stretch, Tone and Balance Class
12:30 p.m. Ladies’ Bridge
1:00 p.m. 18-Hole Ladies Golf Luncheon
1:00 p.m. Portraits, People and Animals Art Class
2:00 p.m. Memory Café
6:00 p.m. Lawn Bowls Club

Clubhouse II

9:00 a.m. Senior Sneakers
9:30 a.m. Beginner and Advanced Tai Chi Class
9:30 a.m. Quilting Group
11:00 a.m. Water Exercise Class

Leisure World Mutual Meetings

July 22

Mutual 9 Board

10:00 a.m., Sullivan Room

July 26

Mutual 17B Board

10:00 a.m., Party Room

July 24

Montgomery Mutual Board

9:30 a.m., Clubhouse I

July 30

Mutual 17A Board

2 p.m., Party Room

Mutual 21 Board

2:30 p.m., Community Room 3

July 25

Mutual 10 Board

9:30 a.m., Sullivan Room

Mutual 20A Board

10:00 a.m., Party Room 1

Mutual 26 Board

10:30 a.m., Party Room

Mutual 24 Board

1:30 p.m., Community Room

July 31

Mutual 19B Board

1:00 p.m., Sullivan Room

Meeting times and locations subject to change. Sign in to (residents.lwmc.com) and check the calendar for any changes. Mutual board meetings are open to respective mutual residents and absentee owners.

Meetings of the LWCC Board of Directors, Executive Committee and Advisory Committees

Golf and Greens

July 19, 9:30 a.m., Clubhouse I

Emergency Preparedness

Aug. 1, 1:30 p.m., Sullivan Room

Audit

July 22, 2:00 p.m., Sullivan Room

Physical Properties

July 23, 9:30 a.m., Clubhouse II

LWCC Board of Directors

July 30, 9:30 a.m., Clubhouse I

The meeting airs on Aug. 5, 7 and 9 at 4 p.m. and 7 p.m. on channel 974.

LWCC Executive Committee

July 19, 9:30 a.m., Sullivan Room

The meeting airs on July 24, 25 and 26 at 4 p.m. and 7 p.m. on channel 974.

Meeting times and locations subject to change. Sign in to (residents.lwmc.com) and check the calendar for any changes. Meetings are open to all residents and absentee owners.

11:30 a.m. Pickleball Club
12:30 p.m. Men’s Bridge
1:00 p.m. Non-impact Fusion Water Exercise Class
2:00 p.m. Model Railroad Club Operating Session
2:00 p.m. Mind-Body Exercise Club
2:00 p.m. E&R Event: ‘Songs for My Father’
3:00 p.m. Tap Dancing in a Chair Class
4:00 p.m. Pickleball Club
4:00 p.m. Friends of India Association

Friday, July 26

Clubhouse I

11:00 a.m. More of the Most Stunningly Beautiful Music Ever Written and How to Listen to It Class
11:00 a.m. Book Club Network: Literary Ladies Who Lunch
1:30 p.m. Watercolor Any Level Art Class
3:00 p.m. Hispanos de LW: Bingo
6:00 p.m. Twilight Golf Dinner
7:00 p.m. Friday Duplicate Bridge

Clubhouse II

10:00 a.m. Chinese Club
1:00 p.m. Ping-Pong Club
1:00 p.m. Chess Club

1:00 p.m. Friday Bridge
1:00 p.m. Zumba Gold Class
4:00 p.m. Pickleball Club

Saturday, July 27

Clubhouse I

9:00 a.m. Gentle Yoga Class
9:00 a.m. American Needlepoint Guild (ANG) Class
10:00 a.m. Rossmoor Art Guild Open Studio
7:30 p.m. Ballroom Dance Club

Clubhouse II

9:15 a.m. Shabbat Service
11:00 a.m. Pickleball Club
2:00 p.m. Going It Alone Club: Social Again
4:30 p.m. E&R Event: Beatlemania Again
7:00 p.m. E&R Event: Beatlemania Again

Sunday, July 28

Clubhouse I

No Scheduled Activities.

Clubhouse II

10:00 a.m. Jewish Discussion Group: Dr. Mitchell Bard
2:00 p.m. E&R Movie: “On Chesil Beach”

Monday, July 29

Clubhouse I

1:00 p.m. Oils and Acrylics Art Class

7:00 p.m. Bingo

Clubhouse II

10:00 a.m. Clipper Workshop

10:30 a.m. Zumba Gold Class

12:30 p.m. Men's Bridge

1:00 p.m. Chess Club

1:30 p.m. Computer Learning Center: Android Help Session

2:00 p.m. Line Dance Class

3:00 p.m. Ping-Pong Club

3:00 p.m. Line Dance Class

4:00 p.m. Ba Duan Class

5:30 p.m. Pickleball Club

5:30 p.m. Model Railroad Club Operating Session

Tuesday, July 30

Clubhouse I

9:30 a.m. Any Medium Art Class

1:00 p.m. Rossmoor Art Guild Open Studio

5:00 p.m. Lawn Bowls Club

7:00 p.m. Trivia Club

7:00 p.m. Duplicate Bridge Game

Clubhouse II

9:30 a.m. Beginner and Advanced Tai Chi Class

12:30 p.m. Scrabble Group

1:30 p.m. Comedy and Humor Club

4:00 p.m. Pickleball Club

Wednesday, July 31

Clubhouse I

9:00 a.m. Gentle Yoga Class

10:00 a.m. Applied Principles – Any Medium Art Class

1:00 p.m. Oils and Acrylics Art Class

5:00 p.m. Perrie LLC: Crab Feast

6:45 p.m. Chicago Bridge

Clubhouse II

10:00 a.m. Zumba Gold Class

1:00 p.m. Chess Club

1:00 p.m. Ping-Pong Club

5:15 p.m. Pickleball Club

5:30 p.m. Model Railroad Club Operating Session

Thursday, August 1

Clubhouse I

10:00 a.m. Basic Watercolor Art Class

11:00 a.m. Writers of Leisure World

12:30 p.m. Ladies' Bridge

1:00 p.m. Portraits, People and Animals Art Class

3:00 p.m. Stamp and Coin Club

6:00 p.m. Lawn Bowls Club

Clubhouse II

9:30 a.m. Beginner and Advanced Tai Chi Class

10:00 a.m. Stitching Group

11:30 a.m. Pickleball Club

12:30 p.m. Men's Bridge

1:00 p.m. Gilbert and Sullivan Society

2:00 p.m. Model Railroad Club Operating Session

2:00 p.m. Mind-Body Exercise Club

3:00 p.m. Tap Dancing in a Chair Class

4:00 p.m. Pickleball Club

4:00 p.m. Friends of India Association

7:00 p.m. Tennis Club

Friday, August 2

Clubhouse I

11:00 a.m. More of the Most Stunningly Beautiful Music Ever Written and How to Listen to It Class

1:30 p.m. Watercolor Any Level Art Class

3:00 p.m. Hispanos de LW: Bingo

7:00 p.m. Friday Duplicate Bridge

Clubhouse II

1:00 p.m. Zumba Gold Class

1:00 p.m. Ping-Pong Club

1:00 p.m. Chess Club

1:00 p.m. Friday Bridge Club

4:00 p.m. Pickleball Club

Saturday, August 3

Clubhouse I

9:00 a.m. Gentle Yoga Class

10:00 a.m. Rossmoor Art Guild Open Art Studio

10:00 a.m. American Needlepoint Guild

6:00 p.m. Sock Hop Group

Clubhouse II

9:15 a.m. Shabbat Service

11:00 a.m. Pickleball Club

2:00 p.m. Going It Alone Club: Social

7:00 p.m. E&R Event: Doris Day Tribute

Sunday, August 4

Clubhouse I

No Scheduled Activities.

Clubhouse II

11:30 a.m. Pickleball Club

2:00 p.m. E&R Movie: "The Bookshop"

6:30 p.m. Baby Boomer Club: Game Night

Cheryl's Organizing Concepts

Help with all aspects of home organizing:

- Managing Paperwork
- Eliminating Clutter
- Packing, Unpacking
- Closets, Kitchens and more

(301) 916-9022

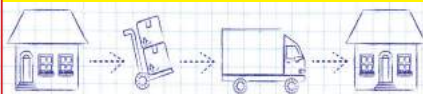
www.CherylsOrganizing.com

\$25 senior discount on first visit for Leisure World residents



BEST RATES IN DC

\$80 x Two Men- 2 or 3 Hours Minimum
• Pickups / Deliveries



CONTINENTAL MOVERS

Professional Movers Who Really Care

Owner Operated Since 1982

References – Local & Long Distance

Packing Services – Pianos & Big Objects



Call for a FREE Quote

202.438.1489 • 301.340.0602

www.continentalmovers.net

We Cater to Cowards • Same-day Emergencies • Evening Hours
Will File Forms for All PPO Insurance Carriers

Look and feel your best!



**COMPREHENSIVE FAMILY
& COSMETIC DENTISTRY**

\$50 off your first visit

Not valid with third party plans, new patients only.

Located at MedStar Montgomery Medical Center

18111 Prince Philip Dr.

Suite T-17

Olney, MD 20832

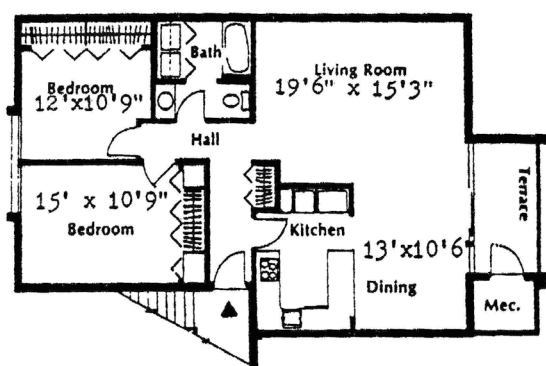
T: 301-774-7887 • www.OlneyDental.com



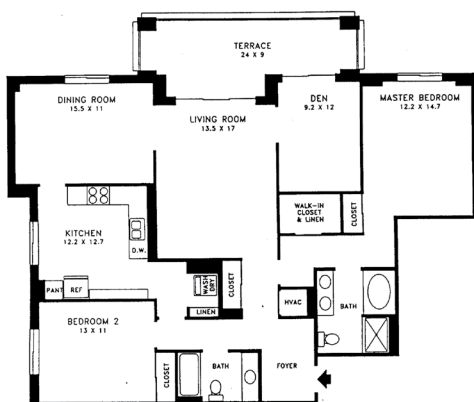
Stan Moffson

#1 In LISTINGS In Leisure World®

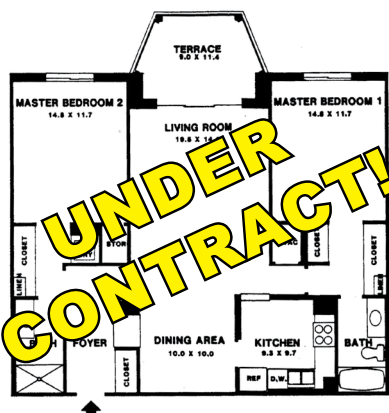
Authorized Leisure World® Specialist



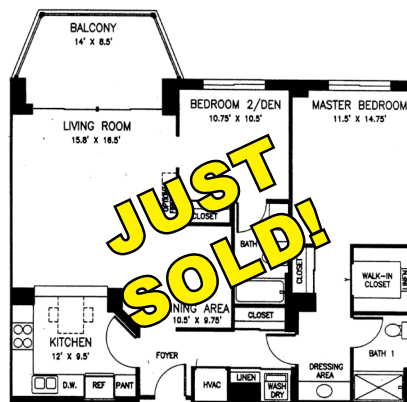
Hampton Coop - \$118,000
2 BR, 1 BA. 1200 sq. ft. Screen porch opens to the Broadwalk.



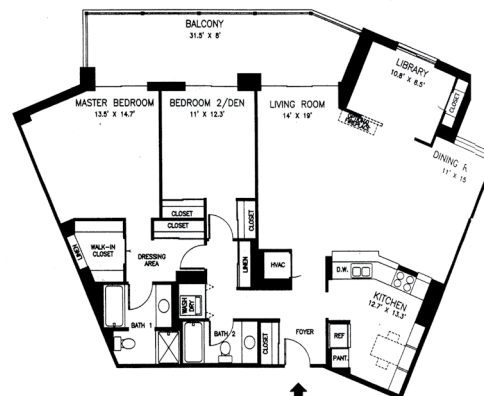
"F" Model - Villa Cortese - \$395,000
2 BR + den, 2 FB, 1510 sq. ft., 24 ft. enclosed balcony, table space kitchen, garage space.



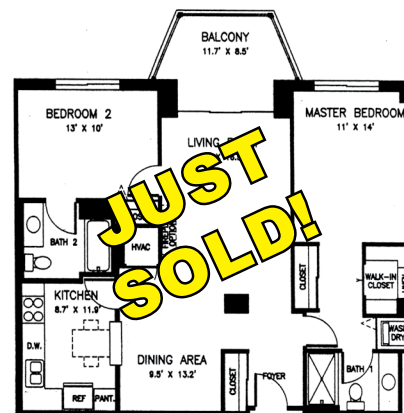
"G" Model - Fairways - \$219,000
2 BR, 2 FB, 1195 sq. ft., Garage space included, immaculate condition.



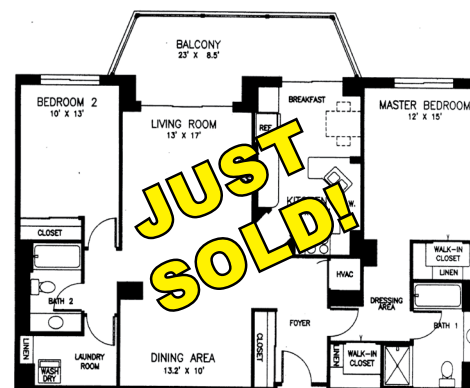
"C" Model - Overlook - \$235,000
2 BR, 2 FB, 1090 sq. ft. Hardwood floors, freshly painted, garage space included.



"KK" Model - Overlook - \$449,000
2 BR + den, 2 FB, 1510 sq. ft., garage space included.



"B" Model - Overlook - \$225,000
2 BR, 2 FB, 1035 sq. ft. Freshly painted, wood floors, new carpet both BR, garage space.



"G" Model - Overlook - \$359,000
2 BR, 2 FB, 1325 sq. ft. Freshly painted.

When Experience Counts

CALL STAN MOFFSON

**#1 Listing Agent In Leisure World
301-928-3463**

**OR JANICE FIFE
301-254-5825**

They will get the job done!

Experience for yourself why Stan is #1 in Leisure World®

Call 301-928-3463 and ASK for STAN!



Email: stanmoffson38@gmail.com Office: 301-681-0550
Web: www.stanmoffson.com



CLASSIFIEDS

THE LEISURE WORLD of Maryland NEWS reserves the right to reject or discontinue any advertisement believed inimical to the best interest of Leisure World. The News shall accept advertising on the same basis as other reputable publications: that is, it shall not knowingly permit a dishonest advertisement to appear in the Leisure World of Maryland News, but at the same time the News will not undertake to guarantee the reliability of its advertisers.

The News recommends that before a resident engage any service herein advertised, that the resident request and verify applicable credentials (i.e. bonded, licensed, insured) and references.

For information on placing advertisements in the Leisure World News, email (lwnewsads@lwmc.com) or call (301-598-1310).

ESTATE SALES

CASH FOR ESTATES; whole apartment contents, whole house contents, storage lockers. Buy out/clean up. (theatticllc.com) Gary – (301-520-0755).

ATTIC TO BASEMENT ESTATE Cleanouts LLC — I provide honest and confidential estate cleanouts with reasonable rates. I assist executors, family members and guardians with a personal touch. I will save you time and money providing fast, efficient service. I work with local auction and hauling companies. Please call or email me

to set up an appointment. Janet Ray (301-384-3198), (wishalot10@aol.com).

REAL ESTATE FOR SALE

A WISE CHOICE. Call me. Marilyn Rubinstein of Weichert Realtors. Your expert in this great community. Top 1% Nationwide. #1 Office Producer with over 40 years of experience and hundreds of sales right here. Call me for a free market analysis. Please call and we'll talk. I make buying or selling an enjoyable and successful experience. Call Marilyn today (301-674-1288).

Announcing a NEW REAL ESTATE PARTNERSHIP, Sue Heyman, Rick Winkler and Sudha Baxter. Rely on our combined strengths, Top Weichert Producers, plus backgrounds in Teaching, Tax and Business. We are located at the Leisure World Plaza Weichert Office and have personal knowledge of the Community from the investor and resident perspective. See our display ad in this issue to review our current listing choices, to see other available properties and to request a free competitive analysis. Office (301-681-0550), Sue (301-580-5556), Rick (301-404-3105), Sudha (202-368-8536).

REAL ESTATE SERVICES – Leisure World resident real estate agent Gerry Walsh. Sunshine Properties – I can list your home for 3.95%. (845-401-1177)

The number of patio homes for sale is at an ALL TIME LOW! If you have been thinking of selling, now is the time. \$\$\$\$ Douglas Realty (866-987-9397). Call Eve Rados Marinik for a free market analysis of your home. (301-221-8867), (evenhomes@gmail.com).

Just listed in CREEKSIDE, newer building in Leisure World. Popular "G" Model with 2 bedrooms, 2 full baths, new carpeting, freshly painted, sunroom, updated kitchen with granite and stainless appliances. Huge laundry room, private view. *Garage parking *Remodeled lobby and guest suite. Call Susan Cohen, Weichert Realtors, for a private tour (301-651-5923).

FOR SALE: 2 bedroom with 2 full baths and garage in the Overlook. Fresh paint, new flooring, beautiful view! \$240,000. Coming soon: The Greens, 3 bedrooms and 2 full baths, garage, close to elevator, hwf, updated kitchen, low \$300,000s. Douglas Realty (866-987-9397). Call Eve Rados Marinik, (301-221-8867) (evenhomes@gmail.com).

REAL ESTATE WANTED

LOOKING TO PURCHASE a 2-bedroom, 2-bath, 1,200-1,300 square feet. Moving to Leisure World in August. Call (608-284-7734).

REAL ESTATE FOR RENT

3 BEDROOM, 2 FULL BATH patio home with eat-in kitchen, 1 car garage. Furnished. Utilities included. \$3,950 per month. Call (410-868-1110).

BEAUTIFUL AND WELL-MAINTAINED 2BR, 2BA + library. 1460 sq. ft. condo available for rental on Sept. 1. Located in Fairways North, this type-S unit includes garage space and enclosed balcony with ceiling fans. \$2,200/month. Call Allen at (301-252-7663).

VACATION RENTALS

BEACH COTTAGE all-year rental timeshares: Seeking 3 people or 3 pairs of beach lovers to have use of my three-bedroom, fully-furnished cottage in Lewes, DE, all year long. Each rental timeshare is for 10 weeks (4 in summer, 6 in spring, fall, winter) for \$225 per week or total annually of \$2250, utilities included. If interested, pictures and more details available after we speak. Contact Polly at (pfields@career-strategies-inc.com) or call (571-236-1775 in MD–LW).

RENTAL WANTED

APARTMENTS TO SHARE Looking for non-smoking roommate. In LW. One bedroom, private half bath. Call (301-366-7689).

FOR SALE

BOAT ACCESSORIES. Dock cables, lines, anchor, fenders, float cushions, rods, reel, heaters, bottom paint, flare gun kit, air pumps, miscellaneous. Richard (301-318-2722).

CHINESE FURNITURE. Three breakfronts, dining table and chairs, Chinese family portraits in watercolor, high-end tables and more. All in Leisure World. (717-498-0373), (301-788-4997).

RETAIL SALES

SCHAEFFER'S PIANO COMPANY. Founded 1901, Fourth generation family ownership. New Kawai dealer. New and used pianos — Steinway, Kawai, Yamaha, Schaeffer. (schaefferspiano.com). (301-424-1144)

PET ADOPTIONS

Giving away a FEMALE CAT. Free. Very sweet 13-year-old female black and white cat. Indoor-only. No health issues; all shots up to date. Interested parties call Diane (301-706-8141). In LW.

AUTO SALES

2016 TOYOTA CAMRY LE. Four-door. MD-inspected, like new. Only 13,500 miles. One owner. \$17,999. Dealing with Leisure World for 43 years. Licensed and bonded. Cash or cashier's check for your car, van or truck. Please call Marty Salins at Auto Plaza (301-325-1973).

2005 TOYOTA SOLARA. Two-door, convertible, V6, SLE, pearl-white, loaded with leather, aluminum wheels, all-power. Like new. MD-inspected. Timing belt and water pump done recently with receipts. \$7,900. Dealing with Leisure World for 43 years. Licensed and bonded. Cash or cashier's check for your car, van or truck. Please call Marty Salins at Auto Plaza (301-325-1973).

FAST CASH FOR USED CARS — Big dollars paid for your used car! Over 43 years' experience serving Leisure World. Please call; available 24 hours. I will come to you. Cash or cashiers' check at your request. I can also help with your new car purchase, any make or model! MD Dealer #U2927. Call Marty Salins (301-325-1973).

I BUY CARS and trucks. Fast and courteous service. Licensed dealer. I will come to you to look at the vehicle. Tom (301-806-8140).



Simple Cremation and Funeral Services

Ask for the Leisure World Package

Our philosophy is simple, make a commitment to the family who entrusts us with their loved one, and live up to it no matter what. It is our pledge to be of service in every way we can, to help you and your family through a very difficult time.

We take pride in everything we do.

Cremation Packages	Burial Packages
Just a Simple Cremation (online arrangement)	Just a Simple Graveside Funeral
\$1,595	\$3,595 Casket included (Winston 20 Gauge)
Simplicity Plus Cremation	Simplicity Plus Funeral
\$2,895	\$5,895 Casket included (Winston 20 Gauge)
Premium Cremation	
\$3,895	

www.valuechoicebrand.com

ALL INCLUSIVE*



No Hidden Fee Guarantee

Cremation and Burial Costs in Washington Metro Area can be very confusing. Oftentimes other cremation providers quote a low upfront price, but they do not provide you with the total cost. There may be hidden add on charges after you have chosen to utilize their services. Integrity and honesty insures a positive experience for all involved which is why we have created our **"No Hidden Fee Guarantee"** package plans. We guarantee that the price we give you over the phone or you see on this site, will be the price that you will pay. See comparison chart on our website www.valuechoicebrand.com. *If the death occurs in Maryland.

Value Choice Cremation & Funeral Care, P.A., 1091 Rockville Pike, Rockville, MD 20852
Phone: (301) 296-6864 • Email: info@valuechoicebrand.com
Operating out of Sagel Bloomfield Danzansky Goldberg Funeral Care Inc., Rockville, MD

TRANSPORTATION SERVICES

YOUR PERSONAL DRIVER is here: Lifelong local resident. Reliable, competent service. Safe, accident-free driving record. Comfortable, clean vehicle; can seat from one to six passengers. Airports, cruiseports, trains, theatres, casinos, restaurants, appointments. Anywhere... including long distance trips to other states. Reservations available 24/7. Call 7 a.m.-10 p.m. with questions or to schedule your ride: Steven Saidman. Cell/text (301-933-8899). Email (Steve.Your.Driver@gmail.com).

CALL & RIDE – Doctors, airport, casino. Will pick up your groceries. Always on time. Over 250 satisfied customers from Leisure World. Call all night for emergencies also. Larry Kraft (240-743-8287).

DRIVER WITH CONCIERGE STYLE at regular rates. I am a Leisure World resident and I understand the needs of our community. My service is a four-door Mercedes-Benz sedan with all the comforts of a leather-seat luxury car, temperature-controlled interior, ample trunk space and a smooth ride. Most important is my dependability and providing any personal assistance you may need. Call Ken at (508-612-9647).

CAREGIVING AND HEALTHCARE

Healthcare professionals must provide current proof of certification or license from the Maryland Board of Nursing to include “certified”

or “licensed” in their advertisement. Examples of positions requiring such proof include, but are not limited to, registered nurse, licensed practical nurse, certified nursing assistant, geriatric nursing assistant and medication technician.

“A” HOME HEALTH CARE for Senior Citizens – Care you can trust and is affordable. Reliable and qualified aide and nursing staff available. Companionship, personal care, meds, housekeeping, shopping, driving. Full/part-time or live-in. Flat rate for live-in care. Call (240-533-6599).

FLAT RATES, ONE WEEK FREE. “Care You Can Trust and Afford.” Reliable, experienced caregiver providing hygiene care, medication reminders, meals, housekeeping, errands, appointments etc. Full/part-time, live-in, overnight or weekend. Call today: (301-490-1146).

ELDERLY CARE: Over 10 years’ experience. Great reference. Available for long days or nights. Can drive. Leisure World resident. (240-461-2188).

CNA/COMPANION over 20 years’ experience with the elderly. Available Monday through Friday days, nights or weekends. Full or part-time, live-in/out. Good references. Also available to travel out of state with my clients. Call (301-442-9324). Own transportation.

CNA WITH CPR LICENSE. I have been looking after elderly ladies and gentlemen since 1992. I would like a live-in and full-time position. I’m a

good person and I smile. Call (202-702-5022).

CNA/GNA/MED TECH with CPR and first aid license. Experience working with elderly. Have worked with agencies, nursing homes and also private duty. Am available full-time or part-time. Please call (240-252-0439), (240-713-1654), or email (sapomadezeus@yahoo.com).

SERVING YOU HOME CARE: Our family serving your family. License #R4289. We believe in a holistic approach to care: body, mind and emotion to achieve optimal health and wellness. Five-step wellness program: safety, nutrition, mental health, socialization, physical activity. (410-980-3145), (www.servingyouhomecare.com), (info@servingyouhomecare.com).

WeSAP NURSING SERVICES. We support aging in place. Nursing care, personal care and non-skilled care. Services catered to individual needs. Advocate of equality. Call for free consultation (301-604-4201), (240-286-0778), (wesapllc@gmail.com), (wesapllc.com).

I AM A CNA. Licensed in nursing, RN in Philippines. 18 to 20 years’ experience as a caregiver. Worked 3.5 years in assisted living and private duty for more than 15 years. Duties include personal hygiene, light housekeeping, shopping, meal preparation, dressing, errands, cooking, doctor’s appointments,

medication reminders. Own car. Dependable, loving, hard worker with excellent references. (301-820-0421).

OVERNIGHT CAREGIVER with more than 14 years’ experience with seniors and people with special needs. I provide safe, respectful, loving, skilled care towards every one of my patients. I will deliver peace of mind to family members by keeping their loved ones safe while also protecting their independence and preserving their dignity. I give detailed information and pay close attention to my clients and to the families’ needs. I have taken care of many people from family members, friends and clients in facilities to group home members and privately cared-for patients. Whatever the needs may be, I strive to go above and beyond my call of duty. Life is a treasure and if I can provide life or encouragement to anyone, or let them know that they are still loved and living with grace and dignity, I am that Angel. Arafa (240-883-8933), (brownzebra@hotmail.com). Availability: 10 p.m.-7 a.m.

PROVIDING QUALITY AND AFFORDABLE CARE: Personal care, companionship, nursing care, housekeeping, shopping. Live-in and live-out, full/part-time. Licensed, insured and bonded. Call for free consultation (240-510-8337).

PERSONAL HEALTH CARE AIDE — CNA with many years of experience. Help with ADLs, driving to doctors,



**PICK UP & DELIVERY
\$10 FREE**

Try us for FREE!! New Customers receive \$10 free service on the first order

**To schedule pick up call or text us
(240)473-2626**

WASH-N-FOLD

DRY CLEANING

COMFORTER CLEANING

ALTERATION & REPAIR

SNEAKER CLEANING

AND MORE..

PM LAUNDROMAT & CLEANERS

3416 Powder Mill Rd Beltsville MD 20705

www.pmlaundromatandcleaners.com

Open 7 days a week

grocery, errands. Good references upon request. Contact Ruth at (240-476-7372).

A BLS (Basic Life Support) -CERTIFIED CAREGIVER/ CARETAKER. Able to complete tasks such as daily motivations, transportation, cooking, cleaning, grocery shopping, organizing, companion care, CPR, landscaping, mechanical issues, etc. Offering personalized customizable care and assistance as needed for clientele. Depending on amount of tasks and time needed, pricing starts at \$13/ hour. Please call Robert Dibble at (301-384-4216) or (301-221-6202) with any questions. If preferred can also send an email at (Cloud500@msn.com). Thank You.

CNA, MEDTECH. Available Monday, Tuesday, Wednesday, day and night. Also does errands, light housekeeping, cooking. (Rosina1@comcast.net), (240-551-6468).

MARIE BAH. Very caring person with 15 years’ experience in senior care. Board-certified nursing assistant in both Maryland and Virginia. Love and cherish every single second spent with senior citizens. Very flexible and adapt very easily. Excellent references from families I’ve worked for. (240-694-5950).

SPECIALITY IN PRIVATE DUTY cases. 20 years’ home health services expertise. Light housekeeping, running errands, special needs, doctors’ appointments, ADLs, companionship, meal preparation, medication reminders and more! Bebe (240-481-7055), (kmabinty78@yahoo.com).

I AM CNA/GNA with more than 15 years’ experience and worked in nursing home, assisted living and home care. Duties include personal hygiene, light housekeeping, laundry, shopping, meal preparation, bathing, dressing, errands, transportation to appointments and medication reminders. Filipina, U.S. citizen, can drive and with own car, honest, dependable, loving and hard worker, with excellent references. Please call (240-643-3392) cell, (301-926-2547) home. (salaraluzviminda@yahoo.com)

GERIATRIC NURSING ASSISTANT (GNA), Certified Medicine Aide. Caregiver with a passion. Assist with bathing, companionship, help with feeding, transfer from chair to bed. Keeps the room clean. I can give or help with medicine and follow prescriptions. Night schedule, 11 p.m.-7 a.m. Weekend schedule can be flexible if need be. (240-708-3284).

NURSING ASSISTANT. Licensed in D.C. Very caring and compassionate with 4 years’ experience. Great reference. Drives, cooks, light housekeeping. Monday-Saturday, 7 a.m.-7 p.m. Cell phone (202-492-4714), (202-596-1755).

HI, MY NAME IS DENISE. I have been a caregiver for my mother and father for many years. I am very

patient and caring. Very reliable and responsible. Love to talk. I can also clean with a big smile. Please call me: Denise (301-237-8874).

KNOWLEDGEABLE CAREGIVER. Experienced for more than 10 years. British-trained, but here in the USA, I’m a MedTech, CNA/GNA. Can work Monday-Friday until September (reason: I will be in school). (240-605-9036).

EXCELLENT CAREGIVER AVAILABLE: Highly competent, trustworthy, flexible, and caring — cared for my parents for over five years. Leisure World resident. Highly recommended. (301-509-7234).

I’m LOOKING FOR A JOB. I’m a CNA. 11 a.m.-3 p.m. Call Muna (204-899-0577).

LIVE-IN COMPLETE CAREGIVER. Recently available. Highly experienced and recommended. Originally from Ukraine. Speaks and understands English. Nelly took care of my neighbor for 15 years and my mother recently for four. Professional, loving, complete caregiving. Needs to be live-in. Would prefer LW. Please call to arrange an interview (301-343-7911).

Hello. I provide SHORT- or LONG-TERM CARE with over 10 years’ experience caring for cancer, Alzheimer’s, dementia, as well as stroke clients. My goal is to help clients achieve the best quality of life possible, which enables me to tailor a care plan that maximizes the client’s independence and dignity. (301-291-1205), (SFthecaregiver@gmail.com).

HOME SERVICES

KITCHEN AND BATHROOM Remodeling – Cabinet and countertop replacement, and bathtub to accessible shower conversions. Please call Joe at JML Remodeling. (301-598-8400). Serving Leisure World since 1988. MHIC# 36674. Thank you.

STAIR LIFTS: Never walk up steps again! Buy new or certified pre-owned stair lifts at reduced prices. Installation, lifetime warranty and free service contract included. Call (301-448-5254).

CONTINENTAL MOVERS. Local moving services. Free boxes. Local – long distance – hauling – pick-ups and deliveries. \$80 x two men, one hour driving time. (202-438-1489) (301-340-0602) (Cmora53607@msn.com) (www.continentalmovers.net).

M.G.V. PAINTING & DRYWALL — Interior and exterior painting. Water damage repairs. Minor carpentry and other odd jobs. 30 years’ experience. Insured. References in your complex. Reasonable rates. Call Mike at (301-655-5433) for a free estimate!

LANDSCAPING SERVICES: reliable, affordable and experienced. Summer clean-up. shrubbery trimming, weed removal, mulching, design and potting. Houseplant services

also available. Beautifying LW, one property at a time! Call Greg at (240-994-5258). (gmarinik@gmail.com). References provided.

CLEANING SERVICES

R&G CLEANING SERVICES – Small, family-owned business catering to you and your household needs. Friendly, reliable and trustworthy with many years of experience. Reasonable rates and flexible hours. Licensed and insured. Help with household organization. Free estimate with appointment. Call (301-442-5032).

UNITED CLEANING GROUP has been a trusty cleaning company used by several Leisure World members over the past 3 years. Call us for your free estimate today! We offer both apartment and home cleanings, garden work and power-washing services. We are extremely flexible: 7 days a week to accommodate your schedule. Give us a call at (240-498-2748) and/or (301-881-0695). We hope to hear from you soon!

COMPUTER HELP

COMPUTER SERVICES – Problems with your PC or Network? Computer Systems Engineer will come to you with help. Home, Business. Call David G. (301-642-4526).

A+ COMPUTER SERVICES. Free in-house diagnostic of your computer, printer, or basic set-ups. A+ certified, virus removal, back-up, and retrieve important data, photos, and music. Have served over 700 clients in Leisure World. Also will teach lessons on Microsoft Office and basic computer skills at your home. Alex Nowrouzi, (301-312-2277). I reside in Leisure World.

COMPUTER LESSONS / SERVICES — Need help with your computer or other digital devices in your home? Tablets, smartphones, smart TVs and more. Computer training, new computer setup, troubleshooting. Lessons at your residence at your convenience. Learn basic computer, email, surfing the web, digital photos. Patient trainer will sit by your side and teach you in plain English — no technical talk! Shopping assistance for all electronic and computer items. Senior specialist since 1996. Call David at (301-980-5840). COMPUTERTUTOR

FIX YOUR COMPUTER — \$100 (\$50 for LW residents) any problem — Fix it or it’s free. (301-802-6633) Easy Elder Tech

PERSONAL SERVICES

PRESERVE YOUR FAMILY MEMORIES! Don’t let your precious photos be forgotten or fade over time. I’ll digitize your photos, slides, and mementos so they can be easily shared with friends and family. Once they’re scanned, I can label the photos to identify the people in them, or bring your photos to life in a memorable DVD slideshow. Call

Kim at Virtual Computer Services, (301-438-3140).

TIRED OF POLISHING your silver? Turn it into cash, which does not tarnish. I will come to your home and give you a free evaluation of what I can pay. I buy all gold and silver jewelry, including broken pieces, all sterling silver, gold and silver coins, gold watches, etc. I am licensed with both Maryland and Montgomery County (lic. #2327). Gold 4 Good pays an additional five percent to all sellers who are veterans of the U.S. Army, Air Force, Navy or Marine Corps. And we extend the same courtesy to their spouses. We honor our servicemen (and their spouses). Gold 4 Good is a Maryland licensed precious metals dealership, not a pawnshop or private home-based business. If you decide to sell, I can buy your items at that time, but there is no obligation. Call Bob, Gold 4 Good, 8241 Georgia Ave., Ste. 100, Silver Spring, MD 20910 (240-938-9694).

DAHLSTROM SENIOR SUPPORT SERVICES. Assistance with senior care and the care of seniors’ pets. Safe/reliable door-to-door transportation as needed. Assistance with pet care. Dog walking and pet sitting as needed. Transportation for grooming/ vet appointments. I’m a 57-year-old semi-retired doctor, Leisure World resident. Bonded, insured, outstanding Leisure World references. Call Carl (410-499-9362).

HOUSE CALLS LLC. Beth Albaneze, CTRS, CPRP, owner. We come to your home for your convenience when faced with acute or chronic life issues. All our services are under one umbrella with a variety of professionals to choose from: counselors, advocates, resource experts, life coaches, recovery specialists, recreation therapists, insurance advisers. Contact Beth at (301-346-6732) or (callingonbeth@gmail.com). Web: (www.callingonbeth.net).

KOMPANION KARE has openings! After 13 years of helping seniors, LW resident Stephanie Sidella has current openings for new clients. Need companionship, driving, light housework or cooking help? This wellness consultant has years of experience with first aid, CPR and understanding medical terminology. Contact Stephanie at (301-922-5080) or (ssidella@verizon.net).

LOOKING FOR SOMEONE to help you while you get back to your life? Need some help with appointments, scheduling, errands, medication reminders, meal-planning and preparation, decluttering, or organizing? I have more than 18 years’ experience in non-medical companion care. Currently in school studying Universal Design and Home Modification for Aging in Place. Have a clean background, don’t drink or smoke, have an excellent driving

record and get along with most pets. Instructor in CPR/AED and first aid. Reliable, punctual and have a great attitude. Bonded and insured. (www.gatekeepercompanioncare.com) (301-371-2210)

PAYYOURNURSE! Do you employ a private nurse or caregiver for your loved one? At PAYYOURNURSE, we assist families in navigating the Federal and State payroll tax laws. From paycheck calculations to quarterly and annual tax returns, we have a service plan that will fit your needs. For more information, please call (703-819-9796); or email (byudd@payournanny.com). "We're Here to Help Families."

LIFE STORY LEGACY VIDEOS — Tell stories about your family and your life journey on video. The video will feature your most treasured photos of grandparents, parents, relatives, friends, and special events. Preserve the legacy of your experiences for family, friends, and future generations. Research indicates that reflecting on and sharing your life journey has lasting benefits. Learn more at (www.lifestorylegacyvideos.com) or contact Bryon at (301-685-3300).

NOTARIES

NOTARY, residing in Leisure World. I offer my service free of charge to Leisure World residents. Can come to your home if needed. (301-379-9694).

PET CARE

DOG WALKING SERVICE — Affordable rates. Responsible and dependable Leisure World resident who is available to walk your pet. Please call (301-598-3454) for more information.

CAT SITTER: 5 years' experience cat-sitting for LW residents. Short- or long-term, day-trip or week's vacation. Feeding, litterbox, playtime, cuddle time. References on request. Mary Beth (240-558-4013).

DOG OR CAT SITTING. Your home or mine. Leisure World resident. Have references. Call (301-598-1664).

DONATIONS WANTED

HOUSING UNLIMITED, INC is a non-profit organization that provides housing for people in mental health recovery. We accept furniture and housewares that are in good condition to furnish our homes. We do pick up. The Housing Unlimited office is (301-592-9314). Thank you.

WANTED: CAR DONATIONS. Support MCPS students by donating your car. Write off up to Fair Market Value! (www.Cars2donate.org) or (240-740-2050).

BOOK DONATIONS WANTED for the American Association of University Women (AAUW) Annual Spring Book Sale in Gaithersburg.

To support local scholarships for women and mentoring program for girls and women. Fiction and non-fiction, hardback and paperback, audio books, DVDs. Art, kids', cooking, foreign languages, gardening, history, mystery, sci-fi, science, women's studies, African-American & Jewish interests, etc. Pickups can be arranged in and near Leisure World. For more information call Liz at (301-840-1258).

HELP WANTED

PROFESSIONAL TYPIST needed for infrequent tasks. Please call (301-565-2917).

WANTED

FAST CASH FOR USED CARS — Big dollars paid for your used car! Over 43 years' experience serving Leisure World. Please call; available 24 hours. I will come to you. Cash or cashiers' check at your request. I can also help with your new car purchase, any make or model! MD Dealer #U2927. Call Marty Salins (301-325-1973).

WILL BUY MILITARY, WWII, WWI, Civil War memorabilia items. Uniforms, weapons, helmets, photos, medals or any other items associated with U.S., German, Japanese or other military history. Call Dave (240-464-0958) or email (obal7@aol.com).

CASH FOR JEWELRY: gold, silver, costume, diamonds, coins (including foreign), watches, stamp collections.

(theatticllc.com) Gary (301-520-0755).

TURN YOUR STERLING SILVER and old gold jewelry into cash and do something good for yourself. Gold 4 Good (8241 Georgia Ave., Ste. 100, Silver Spring, MD 20910) buys gold and silver jewelry, including broken pieces, all sterling silver, gold watches and gold and silver coins. I will come to your house and give you a free evaluation of what I can pay. Gold 4 Good pays an additional five percent to all sellers who are veterans of the U.S. Army, Air Force, Navy or Marine Corps. And we extend the same courtesy to their spouses. We honor our servicemen (and their spouses). Gold 4 Good is a Maryland licensed precious metals dealership, not a pawnshop or private home-based business. If you decide to sell, I can buy your items at that time, but there is no obligation. Licensed with both Maryland and Montgomery County (lic. #2327). Call Bob (240-938-9694).

CASH FOR RECORDS, CDs, and tapes. Best price guaranteed. Free appraisals. All types of music, 33, 45, 78 and CDs. Call Steve (301-646-5403) or email (Stevebuysrecords@gmail.com). Will make house calls.

BUYING JEWELRY, OLD COINS, antiques, gold, silver, old art, old toys, military items, wristwatches, pocket watches, fountain pens, etc. Tom (240-476-3441).

Leisure World trusts Family & Nursing Care



As a premier resource for in-home care services,

Family & Nursing Care helps families rest easy, knowing their loved ones are well supported. From that first cup of coffee in the morning to a sacred bedtime ritual to an unexpected need in the middle of the night, **we are here for you.**

To learn more, come meet **Kelly** and **Jeff** in our office in the Leisure World Medical Center.



Licensed as an RSA by the MD DOH, OHCQ, MD RSA License R2519R; MD NRSA 070605.

3305 N. Leisure World Blvd. familynursingcare.com (301) 588-8200

REHABILITATION

RETURN TO THE LIFE YOU LOVE

Brooke Grove Rehabilitation and Nursing Center's innovative place to heal and revitalize is simply different from any other option in the region. The best therapies and equipment—in a beautiful environment that rejuvenates and restores. Physical therapy spaces bathed in sunlight. Fireside gathering places and restaurant-style dining with sunset views over the lake. The quiet comfort of a garden walk or a relaxing massage.

A STATE-OF-THE-ART REHAB CENTER

Fully dedicated to short-term rehab • Two-story physical therapy gym • Innovative therapies for faster healing • Expansive guest rooms with luxury bathrooms • Covered porches, courtyard and walking trails • Salon • Spa with massage room and soaking tub

BECAUSE WHAT SURROUNDS YOU
REALLY MATTERS.



18100 Slade School Road
Sandy Spring, MD 20860

301-260-2320 or
301-924-2811

www.bgf.org

INDEPENDENT LIVING ASSISTED LIVING REHABILITATION
LONG-TERM CARE MEMORY SUPPORT