

Something's Abuzz at the Garden Plots



Linda Daniels checks out the new honeybee hives at the garden plots behind Shed 5 on July 18. Photo by Stacy Smith, Leisure World News

by Stacy Smith, Leisure World News

The Garden Plot Group recently welcomed some new, active members – nearly 60,000 of them. Two beehives, each containing about 20,000-30,000 honeybees, took up residence in the gardens in early July. The bees travel up to three miles from their hives, helping to pollinate the flowers, vegetables and other plants that fill the 260 individual garden plots located behind the Physical Properties Department building. Leon Vandenberg, president of the Montgomery County Beekeepers Association, volunteered to bring the two hives to Leisure World free of charge when Garden Plot Group member Mary Lalley reached out to him. Every two weeks or so Vandenberg will check on the

hives' health, feeding them sugar water to replace the nectar flow that is absent this time of year. He will also be on the lookout for mites. "We have a problem in Maryland, and really across the nation, with a varroa mite – that's a mite that came across from Europe and invaded our bees back in the 90s, and it actually breeds inside the larvae stage of the bees," Vandenberg said. The mites propagate and attach themselves to the bees, sucking out some of their blood supply and causing viruses within the hive. "We lose a lot of hives to that. So next time I'm [at the garden] I'll probably put a treatment in the hives," he said. "At this time of year when honey supply is low, [bees] don't hatch as many eggs. So treatment is important in early spring and summer." Vandenberg described

➤ to page 3

New Chef Shakes Up Clubhouse Grille Menu

by Stacy Smith, Leisure World News

Local chef Brad Smith has spent the last 22 years cooking "everything from Cuban to Chinese to Russian-inspired cuisine," he said. It's this diverse culinary background that he hopes will infuse the Clubhouse Grille's menu with tasty new treats, such as his risotto arancini

stuffed with Maryland crabmeat and Parmesan cheese. Smith joined the restaurant's staff as head chef about three weeks ago and has plans to change up to 80 percent of the menu items that are available to restaurant-goers from week to week. "We're still considering ourselves somewhat of a steak ➤ to page 3



Photo by Stacy Smith, Leisure World News

On the Beaten Path

A walking path in Mutual 9 offers ramblers a scenic view of the community. See **pages 4-5** for a visual tour of two of the walking paths in Leisure World.

INSIDE	Governance & Information	6	Sports, Games & Scoreboards	34
	Thoughts & Opinions.....	8	Classes & Seminars	38
	Events & Entertainment.....	10	Calendar of Events	41
	Movie Schedule	13	Governance Meeting Schedules.....	41
	Health & Fitness	16	Classifieds.....	44
	Clubs, Groups & Organizations	18		
	Club Trips Listing.....	31		

Volunteers Sought for Bird House Cleaning

by Maureen Freeman,
Leisure World News

During the summer months, some of Leisure World's most active residents include the purple martins that take up residence between The Greens and the golf course's 7th tee.

In anticipation of the birds' late-summer departure for the southern hemisphere, volunteer residents are being sought to clean out their homes.

Situated on the peninsula that extends into the center of the golf course's irrigation pond next to Building 3 of The Greens, six bird houses provide nesting compartments for dozens of the small birds each year.

Like small, avian apartment buildings, the houses encourage the colonizing and social interaction that purple martins prefer.

Perched atop tall poles, the homes can be raised and lowered using a winch at the bottom of the pole.

It's important to properly maintain these homes, according to the Purple Martin Conservation Association. Purple martins found east of the Rocky Mountains

live almost exclusively in man-made housing, and, as "site-faithful" birds, they will return to breed in the same location year after year "as long as housing is available and properly maintained," according to the association's website.

Purple martins are known as gentle, joyful birds with a melodious, spirited chirping and vivacious aerial displays. As aerial insectivores, they eat many agricultural and garden insect pests, including stinkbugs, wasps, leafhoppers,

cicadas, grasshoppers, horseflies, moths and flying ants, while in flight.

Any residents interested in volunteering to clean out the homes and close them for the season can contact the golf maintenance department at (301-598-1580).

The purple martins are expected to depart for Brazil in August or early September, and cleaning each house should take about 15-20 minutes.



One of six purple martin homes situated next to the irrigation pond near The Greens.



Purple martins continually flutter around their homes. At right, a male perches outside a nesting compartment. Photos by Maureen Freeman, Leisure World News

**ASPEN HILL
EXXON**
301-871-6777

EXXON
Auto Care

www.aspenhillexxon.com
14011 Georgia Ave.

Owned and Operated by BENNY Since 1980 "or ask for my son DAN."
Friendly, personal and professional service!

Free transportation home and back when you leave your car for service!

• Complete Automotive Maintenance Service & Repair • Most Makes & Models
• Two Years/24 Month Warranty • Factory Scheduled Maintenance

Auto Service Discounts

Oil Change Service Special - \$29.95

5 Qts of synthetic blend 5W/30 oil

Oil Filter & Lube ♦ Multi-Point Inspection

Most cars, plus tax & disposal fee

Full Synthetic Extra

Present this Coupon with Incoming Order. Expires July 31, 2017

Maryland State Inspection Station

Leisure World News OF MARYLAND

An official publication of the Leisure World Community Corporation, Leisure World News is published twice monthly by Leisure World Staff in collaboration with the Leisure World News Advisory Committee

Leisure World News is published for the benefit of Leisure World residents. Its mission is to provide news and information about community governance and other relevant issues, events, and activities, and to provide residents a forum for their opinions and an opportunity to contribute articles of general interest. All matters concerning the Leisure World News will be decided with this mission in mind.

Leisure World Staff

Maureen Freeman,

Director of Communications

Stacy Smith, Senior Editor

Kathleen Brooks, Publication Associate

Cassandra Chisholm, Graphic Designer

Editorial: lwnews@lwmc.com

Advertising: lwnewsads@lwmc.com

301-598-1310

Leisure World News Advisory Committee

Arthur N. Popper, Chair

Bernie Ascher, Vice Chair

aclwn@lwmc.com

Resident Contributors

Barbara Braswell, Rincy Pollack

and Alan Goldstein

Leisure World News of Maryland reserves the right to reject or discontinue any advertisement believed to be not in the best interest of Leisure World. We will not knowingly permit a dishonest advertisement to appear nor do we guarantee the reliability of advertisers.

Chef

◀ from page 1

house, so we're always going to have what we call 'simply grilled.' You can always come in and get a steak or a piece of chicken or a piece of Chesapeake rockfish or salmon on the grill," he said.

But the rest of the menu is where Smith gets creative. Instead of serving traditional, Mexican-style nachos, for example, he has added an Asian twist, replacing the nachos with wonton chips topped with smoked salmon, scallions, a lime crema and wasabi flavored caviar.

Grilled prosciutto wrapped mozzarella is another favorite, one of many appetizers available on the restaurant's new \$7 appetizer Thursday night menu.

Smith has loved to cook ever since he was a child. His most popular dish, Maryland crab cakes, is his grandmother's recipe.

When the kitchen isn't terribly busy, he said he likes to walk around the restaurant talking to customers, eliciting their feedback and, of course, sharing his passion for food.

"I love to come out when it's slow and pass out appetizers. A real personal touch is what I'm trying to create," he said.

Smith is also trying to create a sustainable kitchen by buying local whenever he can, with rockfish and striped bass coming in from the Chesapeake Bay instead of overseas.

Some residents may remember Smith as the executive chef at Addies on Rockville Pike in the '90s. He also worked for a time as food service director at Aspenwood Senior Living.

"People always ask chefs, 'What's your specialty, or what's your favorite thing to make?'" he said. "In my opinion, a true chef would be like, 'Whatever people like to eat. There's not



Clubhouse Grille chef Brad Smith chops onions in the restaurant's kitchen July 14. Photo by Stacy Smith, Leisure World News

necessarily one thing. I'm not the tomato soup guy." The Clubhouse Grille is open

Wednesday through Saturday, from 4-9 p.m., with an early bird special from 4-6 p.m.

Bees

◀ from page 1

the honeybees as "Maryland mutts," a genetic combination of inbreeding that features Italian and other strains that, like other mutt species, are generally considered healthier and more robust.

If the first two hives are successful, he may bring more to the garden at a later season, and members can look forward to honey next summer.

He encourages gardeners not to confuse the honeybees, which are relatively docile, with yellow jackets, which are predatory, aggressive wasps.

"The bees aren't going to do anything to anybody, unless you do something to them," Vandenberg said.

Vandenberg began beekeeping six or seven years ago when his home garden failed to thrive because of a lack of pollination.

"We didn't get very many cucumbers, and two years later we had so many cucumbers, my wife learned how to make bread and butter pickles, and dill pickles and more pickles than we knew what to do with," he said.

In addition to tending to the bees on his own property, he

now has about 20 hives scattered around Montgomery and Howard County, and trains new beekeepers in how to care for bees and extract honey.

Garden Plot Group members are hoping Vandenberg will bring his magic touch with bees to their gardens. The Group's former hives died out a few years ago, but president Betty Kontaxis believes that this time around, the bees will thrive.

"Bees are dying all over, but this man came along and gave us so much hope," Kontaxis said. "I see the bees and I'm excited like a little kid."

Where in Leisure World?



The simple push of a button makes a nearby area accessible to pedestrians. But what is this area, and where is the button? The answers are revealed in the next edition of Leisure World News. Photo by Leisure World News

MGM LION LINE

MOTOR COACH STOPS THROUGHOUT THE DMV

**PAY ONLY \$20 AND
RECEIVE \$25 IN FREEPLAY®**

Enjoy Round-Trip Luxury Motor Coach
Transportation and 4 Hours of Unmatched Gaming

For Reservations & Information, Please Call
1.800.254.3423 or Visit **mgmlionline.com**

101 MGM NATIONAL AVE OXON HILL, MD 20745



Servicing the Following Locations
Alexandria, Annandale, Arlington, Centreville, Columbia, Ellicott City, Fairfax, Falls Church, Germantown, Laurel, Leisure World, North Potomac, Reston, Rockville, Silver Spring, Tysons, and Washington D.C. (Union Station, Hechinger Mall, Chinatown)

Person must be 21 and cannot be on the Maryland Exclusion List. Please play responsibly. For help visit mdgamblinghelp.org or call 1-800-GAMBLER.

Leisure World's Walking Paths, Part One

by Leisure World News

Whether for fitness or fun, regular walking provides measureable health benefits. At Leisure World of Maryland, several paths specifically for walking wind through the mutuals. Let's explore a couple of them:
Meander across The Inter-

Faith Chapel's parking lot toward Mutual 9 and walkers find one of the lesser known of Leisure World's walking paths, paved in black asphalt and brimming with greenery in every direction. The roughly 0.6-mile of pathway grazes the backyards of single-family homes, offering walkers the potential for a friendly exchange or a simple "hello" with neighbors. With slight inclines and plenty of shade, the trail is an excellent choice for residents who want to comfortably enjoy the outdoors with minimal exertion. In the center of the community, The Greens I and II are surrounded by the golf course, with a walking path encircling its first three buildings. This nearly 0.9-mile course offers walkers a journey with

something new at every turn. Briefly stroll through a forest; amble past ponds and notice the ducks, geese and deer; or sit and watch golfers at play. Early morning and late afternoon light enhance some of the community's most spectacular vistas, and numerous benches along the pathway provide sites for mindful meditation or just a beautiful place to relax.

INTER-FAITH CHAPEL

At the right of the path's Inter-Faith Chapel parking lot entrance, the green berries of a holly tree await wintertime to turn their familiar red color. Photos by Stacy Smith, Leisure World News

A curve in the path is enveloped by trees, revealing a shady spot for sitting.

EDEL MAR DRIVE

The path forks, and wide-spanning trees, flowers and mischievous squirrels occupy the parted center, before it converges and resumes.

A daisy, one of several planted in a middle section of the path, adds a welcome pop of color to the surrounding greenery.

FISKE DRIVE

At left of the path, an unusually wide, knobby tree trunk makes for a comical sight when contrasted to its svelte neighbor.

One of three benches gives travelers a resting place to sit for a breather or take in the scenery.

An evergreen tree canopies a patch of the path's final leg.



You may spot deer in a cool, quiet stretch of forest at the north end of the path. Photos by Maureen Freeman, Leisure World News



The purple martins' mesmerizing chirping and fluttering will end when they migrate soon, but pond fountains and a gorgeous view across to the 6th green remain.



A couple of benches behind Building 3 of The Greens II offers a pretty, shaded spot to meet up with friends.

THE GREENS II



Take a seat on a bench and look across the water to see golfers make their way down the 7th fairway after teeing off.



The golf path and walking path almost intersect; pause here to watch golfers putt at the 1st hole.



Mature trees provide ample shade along the east side of the walking path. Geese families live nearby on The Greens I property.

THE GREENS I



No matter how hot or high the sun, it's always much cooler under the tall pines' shade.



Heading south, get ready for a short but steep decline at the corner ahead. A much less-steep but slightly longer detour is available, too.



At the path's south end, you'll see an expansive view.

GOLF COURSE



A short boardwalk along a pond is a great place to take a break.

GOVERNANCE & Information

July 27: Red Wiggler Market Returns

by Leisure World News

Get your taste buds ready; Red Wiggler Farm returns to Leisure World for six days this summer to sell locally grown and harvested vegetables and fruits. The market will be located at The Inter-Faith Chapel parking lot on Thursdays only, July 27 through Aug. 31, from 9-11 a.m. Certified organic vegetables, including squash, tomatoes, beans, beets and peppers, as well as corn, peaches, and fresh-cut flowers, will be available for purchase. Cash and credit cards are accepted. Red Wiggler is a nonprofit, sustainable 12-acre farm located in Montgomery County where people with and without developmental disabilities come together to work, learn, and grow healthy food. To learn more about the farm, visit (www.redwiggler.org).

■ LW Green

July 28: Town Hall

by S.L. Katzman

All residents are invited to attend and participate in a discussion about the Administration Building and Clubhouse I Site Improvements project on Friday, July 28, from 1:30-3:30 p.m. in the Clubhouse I Crystal Ballroom. Sponsored by LW Green and JustUs, a resident advocacy group, the event aims to provide residents with information and ideas for preventing project plans from advancing further. Members of LW Green and JustUs will provide information about the project and answer audience questions in a town hall meeting format. The groups' concerns about the project, which is estimated to cost more than \$7.2 million, include handicap access, environmental impact, entrance view aesthetics, parking lot spaces and traffic flow, and why an in-depth engineering study should be undertaken to determine the feasibility and cost of renovating the existing Administration Building. Leisure World is in the process of obtaining site development approval from the Montgomery County Planning Board, and meeting organizers will provide residents with ways to influence the planning board's decision.

Aug. 21: AARP Smart Driver Course

The E&R Department is sponsoring an AARP Smart Driver Course on Monday, Aug. 21, in Clubhouse I from 9:45 a.m.-3 p.m., with a one-hour break for lunch. You must pre-register for the course, which is for residents only. Please bring your Leisure World ID. A check payable to AARP, \$15 for AARP members and \$20 for non-members, is required at the time of registration. (Please note: AARP members must show a current membership card to receive the AARP discount.) Register in the E&R Office in Clubhouse I beginning at 8:30 a.m. on Tuesday, July 25. The number of participants is limited to 25, so plan to register early. Participants should bring their driver's license and a pen or pencil to the course. If you have any questions, contact the E&R Office in Clubhouse I at (301-598-1300).

Dial 301-598-1313
for recorded Daily Events

2017 Broadcast Schedule - Channel 974

Executive Committee meetings are broadcast on Wednesday, Thursday and Friday the week after the meeting. Board of Directors meetings are broadcast on Monday, Wednesday and Friday the week after the meeting. All broadcasts are at 4 p.m. and 7 p.m.

Board of Directors Meeting The July 25 meeting airs on July 31, Aug. 2 and 4.	Executive Committee Meeting The Aug. 18 meeting airs on Aug. 23, 24 and 25.
---	---

Group Email Addresses

Residents wishing to contact Leisure World Management, the LWCC Board of Directors, or the Executive Committee may send an email to the appropriate email address listed below. It will automatically be forwarded to all members of that group who have an email address on record. Messages to any of the email groups should pertain only to the management and operation of Leisure World trust properties, services, or activities. Please do not send emails to all three addresses, as there will be a duplication of recipients and will not result in a faster response to your question or comment. Messages pertaining to mutuals or anything else which Management, the Board of Directors, or Executive Committee does not control should also not be sent to these groups. The group email addresses are:

- LWMC Management - management@lwmc.com
- LWCC Board of Directors - board@lwmc.com
- LWCC Executive Committee - execcomm@lwmc.com

Leisure World of Maryland Resales

April through June, 2017

MONTH	RESALES	RESALES FEES COLLECTED
April	41	\$175,366
May	32	\$131,954
June	44	\$191,551
TOTAL	117	\$498,871

The number of Leisure World resales and the corresponding resales fees increased by about a third and a half, respectively, in the second quarter of 2017 compared to the first quarter of the year. In April, May and June, 117 units were sold and almost half a million dollars in resales fees were collected; in January, February and March, 88 units were sold and \$331,123 in resales fund fees were collected. The buyer of a home in Leisure World of Maryland contributes two percent of the home's selling price to the Resales Fund. Those fees are used exclusively for Facilities Enhancement Plan (FEP) projects, which are selected by the Leisure World Community Corporation board of directors. Recent FEP projects include the soon to be completed new fitness center in Clubhouse II, and renovations to the restaurants and ballroom in Clubhouse I.

– Leisure World News

What Is the Foundation of Leisure World?

by Marian Altman

The Foundation of Leisure World is a 501(c)3 organization created in 1981 “to enhance the quality of life for the residents of Leisure World in the areas of culture, education and health.”

The Foundation has subsidized cultural events such as concerts, art shows and dance programs to make them more affordable for residents. The organization has also purchased items not covered by the community operating budget, such as the grand piano in the auditorium, audio-visual equipment, and Fitness Center equipment.

The Foundation has supported numerous other organizations such as Fireside Forum and the Center for



Lifelong Learning, as well as replaced equipment for clubs. Recently, the Foundation funded \$30,000 to the Computer Learning Center to purchase new computers, and provided the Woodshop \$1,900 to purchase an AED defibrillator.

Contributions to the Foundation may be claimed as deductions on income tax returns to the extent permitted by law. We appreciate the Leisure World of Maryland Corporation’s support staff, which allows all money donations to be used exclusively for residents.

For further information or to make a donation, visit either Clubhouse E&R office for an information card and/or a donation envelope, or contact Marian Altman, president, at (Altman15004@comcast.net) or (301-438-1357).

CORRECTION

An article in the July 7 edition stated that the Leisure World Community Corporation board of directors voted down a motion to eliminate \$31,000 from the Facilities Enhancement Plan. If the motion had carried, the funding would have been eliminated from the Facilities Maintenance Plan.



JOHN J. FERGUSON, ESQ.
FERGUSON & WILPON

ESTATE ADMINISTRATION/PROBATE

WILLS POWERS OF ATTORNEY LIVING TRUSTS

REAL ESTATE MEDICAL DIRECTIVES/LIVING WILLS

CALL JOHN FERGUSON
301-570-3633

3406 Olandwood Court, Ste. 202, Olney, MD 20832
WE CAN MEET IN YOUR HOME OR OUR OLNEY OFFICE

Client REVIEW on Zillow

This is the fifth home I've sold in my life, and Barbara Michaluk is probably the best realtor I've ever had. Her market research was thorough and accurate, she gave us great advice on how to spruce up the home and assisted with finding and coordinating contractors, so we could get the home on the market quickly. She was available whenever we needed to talk. I highly recommend Barbara for anyone seeking an experienced, energetic and results oriented realtor!

—Tim Williamson

Call Me for a Market Evaluation for Selling Your Home!

I offer you the highest level of personalized service and expertise.



ACTIVE

Fairways So. 1,530 sf
3 bedrooms, 2.5 baths, wood floors, new paint, golf course view. Garage +golf cart space
List \$325,000



SOLD

Dartmouth Townhome
Condo 1,359 sf
2 bedrooms, 2.5 baths, updated kitchen, outdoor balcony and patio.
Sold \$150,000



SOLD

Overlook 1,242 sf
2 bedrooms, 2 baths, open concept kitchen with granite, lam. wood floors. Extra storage.
Sold \$260,000



SOLD

15100 Interlachen Dr.
Double unit 2,170 sf
3 bedrooms, 3 baths updated kitchen & baths
2 garages +golf space
Sold \$425,200

Barbara Michaluk | Weichert Realtors

Your Full Service Leisure World® REALTOR

Phone Direct 240-506-2434 / (o) 301-681-0550

Authorized Leisure World® Specialist / E Pro® Certified
Senior Real Estate Specialist® / Certified Staging Agent®
Internet Marketing Specialist® / Relocation Specialist®

Web: BarbaraSellsMDhomes.com | Email: michaluk@verizon.net



Work with an Authorized Leisure World® Specialist

THOUGHTS & OPINIONS: *From Our Residents*

Clubhouse I Accessibility Problems

A serious problem exists in the access to Clubhouse I. There is no at grade parking available for residents and guests to use. For those among us who need to use a wheelchair, walker or just have difficulty in walking, they are forced to go a long distance from their parking spot uphill to access Clubhouse I. If you are lucky and somebody can let you off at the entrance to the Clubhouse and you are going to one of the restaurants, you are still required to go a distance to reach your objective.

We, as a caring and considerate community, should take action to give all residents of Leisure World first class access to our facilities.

In my opinion, providing at grade, close in parking should be a major objective for Leisure World.

– David Polinsky

CCOC Training Not So Good

The Leisure World News issue of May 19, in the Thoughts and Opinions section, contained a letter praising the CCOC training for condominium and homeowner association board members. I do not think such praise is deserved.

When the CCOC training came out at the start of 2016, my wife and I were the first to complete it. We noticed so many errors that we submitted six pages, single-spaced, of mistakes and suggestions for improvements.

The main problem, which has still not been fixed, is that it is possible to easily pass all the tests and receive a certificate of completion without reading a single word of the training. I do not know why this has not been fixed in the year and a half since we pointed out this problem to the CCOC. Just click “next” at the bottom right of each page, don’t bother reading anything, and click “next” again. When you get to the quizzes, give any answer at all. If your answer is right, they let you go on. If your answer is wrong, they tell you to select another answer. Keep doing that and you finally get all the answers correct.

Errors in the CCOC training included the following:

1. The CCOC training said the Americans With Disabilities Act applied to private condominium and homeowner associations. The HUD website at that time said, “In most cases, the ADA does not apply to residential housing.”

2. The CCOC training said an “essential point” is that members of nominating committees cannot be running for the board. That is not accurate. Robert’s Rules of Order Newly Revised says the opposite.

3. The CCOC training said a majority of the members is needed to change condominium rules. Leisure World mutual documents say a majority vote of the board, not members, is all that is needed to amend the rules.

4. The CCOC training said minutes should include who made each motion, who seconded it, and who abstained. Robert’s Rules of Order Newly Revised, which guides all of Leisure World and almost all condominium and homeowner

associations in Montgomery County, says the opposite. All that is needed is to say a motion was made and adopted, and those who abstained should be ignored.

The CCOC training was written without any opportunity by the public to submit suggestions, as admitted by the CCOC itself. The law passed by the County Council concerning CCOC training was adopted six months before the training was written. I believe it should not have been made mandatory until lots of people had a chance to see and comment on it.

Three members of the County Council voted against the bill that imposed the CCOC training. They said in a televised meeting the training should be voluntary at first, to help obtain support from the communities involved and to fix the mistakes that might, and as it turned out were, contained in it.

To be clear, I think training of condominium and homeowner association board members is a great idea. The manner in which this particular training program has been handled by the CCOC – particularly the fact that to this day you do not have to read a single word of the training in order to pass all the tests and receive a certificate of completion – makes this particular training almost useless.

– Paul M. Bessel

An Open Letter to Leisure World Residents

As many Leisure World residents know by now, the Leisure World Community

Corporation board of directors has continued to push forward on the construction of a new Administration Building and Clubhouse I Site Improvements – at an estimated cost of \$7.2 million.

Despite repeated calls for a community-wide referendum on the advisability of the project, the board has rejected those efforts and opted to proceed in the face of mounting opposition.

There is no reason to spend the \$7.2 million if a desirable result can be accomplished for far less. The purported rationale for a new Administration Building is that more office and meeting space is needed. If we accept this rationale, why not solve the problem by adding a second floor to the existing Administration Building? It seems to me that construction of such an addition should be able to be accomplished at a fraction of the estimated project cost, while still satisfying the alleged space requirements and preventing the profligate spending of our community’s financial resources. As an added bonus, the traffic flow interruptions caused by the planned project could be substantially avoided.

When the board acts unilaterally, giving no voice to the community, it seems to run contrary to the traditions of referendum and redress that are an ingrained part of our society. I urge all residents to attend the town hall meeting on Friday, July 28, at 1:30 p.m. in the Crystal Ballroom and to take all appropriate measures to stop what I consider to be the board’s high-handed and arbitrary actions.

– Betti Goodman

Submitting an Item to Thoughts & Opinions

1. Submissions must be emailed to aclwn@lwmc.com or delivered to the LW News Office.
2. Receipt of submissions will be confirmed by email or telephone.
3. Submissions must state the writer’s name, address, telephone number, and email address, if any, but if the material is published, it will include only the writer’s name.
4. LW News cannot guarantee when or if a submission will be published.
5. See LW News Guidelines and Board Standing Rules at www.residents.lwmc.com.

ASSISTED LIVING – MEMORY SUPPORT

SIMPLY DIFFERENT

Partnering with national leaders in the field, we've set a new benchmark in memory support. All of our staff have specialized training in assisting people with memory loss using redirection and anxiety-reducing techniques that decrease the need for medication. Creatively designed programs stimulate memory and build independence and self-esteem.

BECAUSE WHAT SURROUNDS YOU
REALLY MATTERS.



BROOKE GROVE
RETIREMENT VILLAGE

18100 Slade School Road
Sandy Spring, MD 20860

301-260-2320 • www.bgf.org



INDEPENDENT LIVING
LONG-TERM CARE

ASSISTED LIVING
MEMORY SUPPORT

REHABILITATION

EVENTS & Entertainment

■ Ballroom Dance Club

July 22: Dance to the Music of The Esquires

by Joyce Hendrix

Come dance with us to the music of The Esquires on Saturday, July 22, from 7:30-10:30 p.m. in the Clubhouse I Crystal Ballroom.

The Esquires have been performing together since the early 70's, and have been one of the musical trios playing for the Ballroom Dance Club for 20 years.

Suggested dress for summer dances is dressy casual with collared shirts and slacks for the gentlemen and dresses or pantsuits for the ladies.

Make reservations with Irmgard Patrick at (301-598-2984). Reservations are necessary to ensure that you will be seated with your friends. Seating capacity is limited to 12 tables of 10 dancers each.

A cash bar is available and dancers are welcome to bring snacks for the table. Residents may become members for \$10 annually per person, which entitles you to pay \$10 each admission to the monthly dances. Non-members and guests pay \$15 per person, per dance.

■ Education and Recreation Department

Aug. 12: An Evening of Comedy Cabaret

Get ready for an evening of sidesplitting fun on Saturday, Aug. 12, at 7 p.m. in the Clubhouse II auditorium. The husband and wife team of Richard and Sandy Riccardi perform an original, all comedy cabaret act, with Sandy singing as Richard plays piano, that will have you laughing out loud. Cabaret Scenes Magazine calls their show "A Musical Saturday Night Live...One helluva rib-tickling night out!"

Richard has played for such megastars as Tom Jones, Joel Gray, Martha Raye and Diahann Carroll. He was the associate conductor for the third national Broadway tour of "Annie" and has played with the San Francisco Symphony, the San Francisco Opera and the San Francisco Ballet.

Sandy spent 11 years on the regional musical theater circuit out of New York City after receiving her master of music degree at Manhattan School of Music.

This special evening is co-sponsored by the E&R Department and the Foundation of Leisure World. Tickets are \$10 per person and are on sale in both clubhouse E&R offices. Please bring your Leisure World ID.

The Foundation of Leisure World is a 501(c)3 organization that was established for charitable, health, educational and cultural purposes.

Contributions to the Foundation may be claimed as deductions on income tax returns to the extent permitted by law.



Sandy and Richard Riccardi, courtesy photo

■ Arts In Motion (AIM)

Aug. 18: Thad Wilson Jazz Orchestra



Thad Wilson Jazz Orchestra, courtesy photo

by York Van Nixon III

On Friday, Aug. 18, Thad Wilson brings his 10-piece orchestra with vocalist Steve Wilson to Café AIM for the first time. The performance will be an evening reminiscent of the big-band era.

Tickets, \$25, are on sale in the Clubhouse I E&R office, checks only payable to AIM. The temporary price increase reflects the cost to pay 11 professionals for the evening. And as usual, hors d'oeuvres and snacks are included. Cocktails begin at 6 p.m., and the show starts at 7 p.m.

Kristine Key

Key makes her debut performance at Café AIM on Friday, Sept. 8. Members at the Fred Foss concert heard her sing one song and begged for more. She promises to deliver an evening of tonality and phrasing likened to the best ever to step on the jazz stage.

Tickets, \$20, go on sale Monday, Aug. 21 in the Club-



Kristine Key, courtesy photo

house I E&R office, checks only payable to AIM.

The price includes hors d'oeuvres and snacks. Cocktails begin at 6 p.m., and the show starts at 7 p.m.

Reserved tables of eight or more are limited to members only. To join or view upcoming shows, visit our website at (AimArts.net).

Nasar Abadey Quartet

Jazz aficionados are in for a treat. The Nasar Abadey Quartet performs on Friday, Oct. 13, at 7 p.m. in the Clubhouse II auditorium. Abadey, besides being a jazz professor at the Peabody Institute of the Johns Hopkins University, is one of the most sought after drummers in the business.

Known for his lyrical style and innovative rhythms, Abadey has become an institution around the globe.

Tickets, \$20 checks only payable to AIM, are on sale in the Clubhouse I E&R office beginning Monday, Sept. 11.

The price includes hors d'oeuvres and snacks. Cocktails begin at 6 p.m., and the show starts at 7 p.m.

Reserved tables of eight or more are limited to members only.

To join or view upcoming shows, visit our website at (AimArts.net).

■ Sock Hop Group

Aug. 19: A Rockin' Good Time

The Sock Hop Group hosts its next dance on Saturday, Aug. 19, from 7-10 p.m. in Clubhouse II. DJ's Ernie and Karen Poland of Take Two Entertainment provide the music of Motown – the '50s, '60s and '70s. Join us in the fun.



Admission is only \$5 per person. Feel free to bring your own beverages and snacks. Any questions? Contact Doug Brasse at (301-448-8708) or (dbrasse@weichert.com).

–Doug Brasse

■ Education and Recreation Department

Aug. 26: The Fabulous Hubcaps



The Fabulous Hubcaps, courtesy photo

Get ready folks, the E&R Department and the Foundation of Leisure World are proud to present The Fabulous Hubcaps, one of America's favorite oldies show bands, on Saturday, Aug. 26, in the Clubhouse II auditorium.

Performing together since 1974, this band's flair for capturing the true likeness of the artist, Harvey Hubcap, will make you want to rock the night away. With classic sounds from the early days of rock 'n' roll, The Hubcaps will take you on a musical journey you won't forget!

The group has been inducted into the Southern Legends Entertainment and Performing Arts Hall of Fame and the Maryland Entertainment Hall of Fame, which named them the 2015 "Vocal Group of the Year." Hubcaps performances are legendary for wowing audiences all over the country.

Joining the 2017 tour on bass, keyboards and vocals is Dennis

"Denny" Cook, an original member of Harvey Hubcap and the Do Ron Ron.

So, buckle up and get ready to have a blast traveling back in time with The Fabulous Hubcaps!

Because of the expected popularity of this group, there are two show times, at 4:30 p.m. and 7 p.m. Tickets are \$15 per person, with a limit of two per household, and go on sale beginning Tuesday, July 25, at 8:30 a.m. in the E&R offices in Clubhouse

I and II. Please bring your Leisure World ID.

If tickets are still available after Saturday, Aug. 19, residents may purchase additional tickets for their family and friends.

The Foundation of Leisure World is a 501(c)3 organization that was established for charitable, health, educational and cultural purposes. Contributions to the Foundation may be claimed as deductions on income tax returns to the extent permitted by law.



■ Education and Recreation Department

Aug. 31: The Frank Plumer Trio

The E&R Department is pleased to welcome Frank Plumer back to Leisure World, this time coming as part of a trio.

On Thursday, Aug. 31, at 7 p.m. in the Clubhouse II auditorium, Plumer and the rest of his trio will play well known American standards for your entertainment.

Tickets are \$7 per person and go on sale in both clubhouse E&R offices on Tuesday, July 25, at 8:30 a.m. Please bring your Leisure World ID.

Coming in 2017

The E&R Department is pleased to provide the following programs.

Aug. 12, 7 p.m.	Sandy and Richard Riccardi, Comedy Cabaret
Aug. 26, 4:30 & 7 p.m.	The Fabulous Hubcaps
Aug. 31, 7 p.m.	Frank Plumer Trio
Sept. 9, 7 p.m.	Four Seasons Dancers
Sept. 13, 7 p.m.	Peabody Ragtime Ensemble
Sept. 28, 1:30 p.m.	Steven Friedman: The Musicals of Harold Prince
Oct. 6, 8 a.m.	Fall Walkathon
Oct. 15, 7 p.m.	Trio Caliente
Oct. 27, 7:30 p.m.	Halloween Dance with Rise & Show Band
Nov. 8, 7 p.m.	Salvation Army Band
Nov. 30, 1:30 p.m.	Steven Friedman: More History of Broadway
Dec. 17, 2 p.m.	Olney Big Band
Dec. 18, 7 p.m.	Pianist Thomas Pandolfi – Holiday Concert

Watch Leisure World News for more information on these and other upcoming programs throughout the year.

Bring the family to see

Junie B. Jones is Not a Crook

Now until August 14!

by Allison Gregory

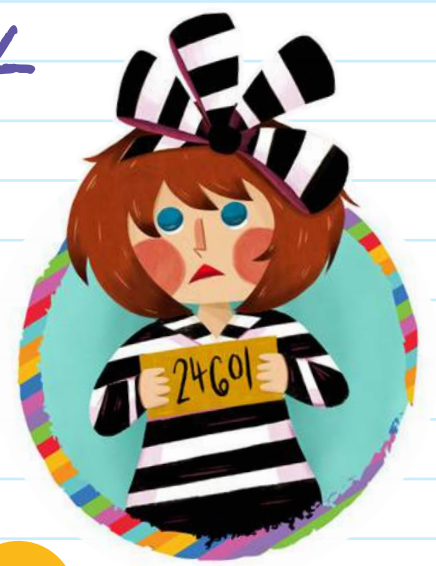
Based on the book series by Barbara Park

"This is one that you should not miss this summer. It is so entertaining and hilarious!"
– Capitol Momma

ADVENTURE
THEATRE
& ATMTAC ACADEMY

PURCHASE
TICKETS

Online: www.adventuretheatre-mtc.org
Phone: 301.634.2270



Next Season's Programs Line Up

by Jonas Weiss

A varied set of interesting programs, given by experienced and competent speakers, awaits residents who come to listen and participate.

Sept. 10 – How Human Evolution is Changing Our World, by Fred Edwords of the Smithsonian Natural

BP SERVICE
Carpet & Upholstery Cleaning

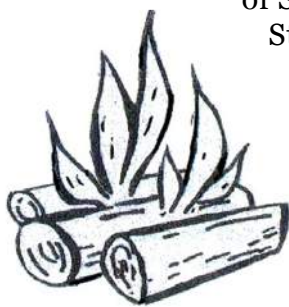
Commercial and Residential
Pet Stain Removal, Gum Removal
& Deodorize
We Move and Replace Most Furniture

Houses/Apts/Offices/Churches/Daycares

Benjamin Pena
Office: 301-942-8789 • Cell: 240-505-5213



History Museum
Oct. 1 – America's First Ladies: Influence & Image, Part I, by author Andrew Och
Nov. 5 – The Food & Drug Association & the Safety of Our Food Supply, by Victoria Donnelly from Community Public Affairs
Dec. 3 – Revolutionary Dissent: How the Founding



Generation Created Freedom of Speech, by professor Stephen Solomon
Jan. 7, 2018 – Bootleggers, Bathtubs & Speakeasies: Tales from the Prohibition, by author Garrett Peck
Feb. 4 – A History of the Zapruder Film of the Kennedy Assassination, by Alexandra Zapruder
March 4 – Women in

Science & Engineering: a History of Trailblazers, Trends & Transitions, by author and professor Karen Rader
April 8 – The African-American Experience as Seen Through Art, by Cindy Arons, a docent at the Smithsonian American Art Museum
May 6 – Shattering Myths about the Indian Wars, by author Peter Cozzens
June 3 – America's First Ladies: Influence & Image, Part II, by author Andrew Och


All programs are held on Sundays at 2:30 p.m. in the Clubhouse II auditorium. They are made possible by donations from Leisure World clubs and organizations, and private donations from residents.

The Fireside Forum is a non-profit 501(c)3 organization. For tax-deductible donations, contact Treasurer Michael Benefiel at (240-204-2061).

PLEASE, NO CASH

The E&R offices in Clubhouse I and II do not accept cash payment for programs or activities it sponsors. Payment can be made by check payable to LWMC. Or, if \$10 or more, payment can also be made with a credit card (MasterCard, Visa or Discover).

When paying for programs or events sponsored by Leisure World clubs and organizations, payment can only be made by check, payable to that club or organization.





FLOOR MAX

DURACERAMIC now with **SCOTCHGARD** PROTECTOR 3M
WILL NOT STAIN, WILL NOT FADE, WILL NOT WEAR OUT!

10'X10' KITCHEN FLOOR
approx **\$989 Installed**

www.floormax.us.com

Carpet • Hardwood • Ceramic • Laminate • Vinyl • Bathroom Remodeling

Bring this ad in and receive a **FREE** bottle of **TECH STAIN REMOVER** while supplies last

MADE IN U.S.A.

The Flooring Professionals Since 1985

All Leisure World residents receive **FREE** in home estimates!

Aspen Hill Shopping Center
(301) 460-4100

\$250 OFF any **PURCHASE** of **\$3,000 or more!**
HURRY Sale Ends SOON!

(Limited time only. Cannot be combined with other offers. Must be presented at time of purchase)

MHIC #41515

■ Jewish Residents of Leisure World

July 27: ‘Hummus! The Movie’

Thursday, July 27, Jewish Residents of Leisure World and Coming of Age in Maryland present “Hummus! The Movie” (2015, 1 hour, 12 minutes, documentary, English, Arabic and Hebrew, with partial subtitles) at 1:30 p.m. in the Clubhouse II auditorium.

The film is about this delicious food sweeping across America and bringing Muslims, Christians and Jews together around the world, with personal stories of men and women who love their hummus.

Tickets, available at the E&R office in Clubhouse I, are \$7. Checks only, payable to JRLW.



2017 Movie Schedule

Sponsored by the E&R Department

Movies are FREE and shown for your enjoyment in the Clubhouse II Auditorium. Please pick up your tickets (limit two per person) on the date indicated below at either Clubhouse I or II. Please bring your Leisure World ID and remember tickets can go fast.

Show Date & Time	Movie	Tickets Available
July 30, 2 p.m.	Love & Friendship	SOLD OUT
Aug. 17, 1 p.m.	Florence Foster Jenkins	July 25
Aug. 27, 2 p.m.	Hello, My Name is Doris	Aug. 8
Sept. 14, 1 p.m.	Sully	Aug. 22
Sept. 24, 2 p.m.	Café Society	Sept. 6
Oct. 19, 1 p.m.	I Saw the Light	Sept. 19
Oct. 29, 2 p.m.	Loving	Oct. 10
Nov. 16, 1 p.m.	Fences	Oct. 24
Nov. 26, 2 p.m.	Wild Oats	Nov. 7
Dec. 10, 2 p.m.	Manchester by the Sea	Nov. 21
Dec. 28, 1 p.m.	Rules Don't Apply	Dec. 5

Movies are subject to change.

Wills, Wealth Planning & Trusts



Luann Battersby
Leisure World neighbor
3510 Chiswick Ct

Phone: 301-518-0423
Email: Luann_Battersby@comcast.net
Housecall: No charge!
www.battersbylawoffice.com
Simple will:
\$175/person; \$330/couple
Living will/medical directive \$80
Financial power of attorney \$90

Probate: flat fee or hourly, not a percentage of estate.

Estate and tax planning.
I also assist clients in other related matters when they need my help.

TAKE THE STRESS OUT OF YOUR MOVE!

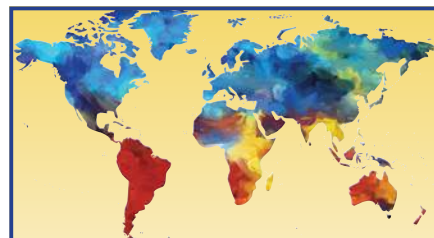
CONTINENTAL MOVERS
Professional Trained Movers Who Really Care

Local & Long Distance • Packing Services • Pianos and Big Objects
Owner Operated since 1982 • References • Best Rates in DC
\$80 x two men • Pickups / Deliveries



www.continentalmovers.net • Cmor53607@msn.com

202-438-1489 | 301-340-0602



Life's A Trip, Inc.
Cruise and Travel

With over 35 years of travel expertise, we can plan the perfect adventure for you!

CALL OR STOP BY TODAY!
301-421-4400 • Info@lifes-a-trip.com
15316 Spencerville Ct. #101
Burtonsville, MD 20866



FAMILY FOOT & ANKLE ASSOCIATES OF MARYLAND

Dr. Michael Frank
Dr. Marc Goldberg
Dr. Adam Lowy

3 Convenient Locations
Minutes from Leisure World

OLNEY

Oland Professional Center
3408 Olandwood Ct. Suite 204
Olney, MD 20832
(301) 924-5044

KENSINGTON

Family Foot & Ankle Associates of Maryland
3930 Knowles Ave Suite 202
Kensington, MD 20895
(301) 942-8110

SILVER SPRING

Colewood Centre
10801 Lockwood Dr. Suite 260
Silver Spring, MD 20901
(301)439-0300

www.MarylandFeet.com



Kitchen & Bath Remodeling

301-598-8400

SERVING LEISURE WORLD SINCE 1988

Cabinetry, countertops, tile, custom carpentry.
Safety First- Tub to Shower Conversions.
Price match guarantee on all projects.



MHIC# 36674





"0" DRYING TIME

Time to Clean Your Carpet?

BEWARE
Steam can injure your carpet causing mildew, shrinkage and browning. Our system is totally dry, no wet floors! No leaving dirty water & shampoo in your carpet! No Steam = No Mildew, Stretching or Reappearing Stains.



Flood Fire Hoarding Remediation & Repair

SATISFACTION GUARANTEED
Try us, you'll be glad you did!

- All Natural, 100% Safe, Non-Toxic
- Removes Pollen - Helps With Allergies
- Pet Stains & Odors Completely Removed

Why Use Our Dry-Shampoo Method?

- Removes Dust Mites & Most Allergens
- Friendly & Courteous Service
- No Gimmicks - No Hidden Costs
- Bonded & Insured
- Dry-Shampoo Upholstery Cleaning Services Available Too!
- Area Rugs, Hardwood & Furniture



FREE MOLD INSPECTION

STAIN REMOVAL SPECIALISTS
We accept and honor anyone's coupons at any time! Or use these specials!

<p>3 ROOMS Deep Cleaning/ Stain Removal \$125.00 REG. \$175 YOU SAVE \$50.00 DryMaster • 240-205-2218 With this coupon. Up to 330 sq/ft. Some restrictions apply.</p>	<p>5 ROOMS Deep Cleaning/ Stain Removal \$150.00 REG. \$220 YOU SAVE \$70.00 DryMaster • 240-205-2218 With this coupon. Up to 530 sq/ft. Some restrictions apply.</p>	<p>LOVE SEAT & SOFA Deep Cleaning \$150.00 REG. \$200 YOU SAVE \$50.00 DryMaster • 240-205-2218 With this coupon. Some restrictions apply.</p>
---	---	--

CALL US NOW AT
240-205-2218 FOR A
FREE, NO-OBLIGATION
ESTIMATE

DryMaster
CARPET-UPHOLSTERY
CLEANING SERVICES
SERVING MD-DC-VA
Email us: snkasyllum@aol.com
www.omegadrymaster.com

Education and Recreation Department

Thursday Afternoon at the Movies

Aug. 17: 'Florence Foster Jenkins'

The E&R Department is pleased to present "Thursday Afternoon at the Movies." Films are shown in the Clubhouse II auditorium at 1 p.m. On Aug. 17, the presentation is "Florence Foster Jenkins" (2016, 1 hour 51 minutes, biography/comedy/drama, PG-13 for brief suggestive material).

Free tickets, limit two per person, are required and can be obtained from the E&R office in either Clubhouse I or II, beginning Tuesday, July 25, at 8:30 a.m. Please bring your Leisure

World ID.

Despite her horrid singing voice, New York City heiress Florence Foster Jenkins (Meryl Streep) is certain she can become an opera star. Her partner and manager, St. Clair Bayfield (Hugh Grant), does all he can to shield Florence from the truth, but his task may prove impossible.

Thursday movie screenings are for your enjoyment; there is no charge. Be sure to pick up your ticket(s) in advance if you plan to attend. Please note: No one will be seated after 1 p.m.



Let Sue Teach You

Choose the Professional with all the Strategic Teaching Aids...
Floor Plans, Free Community Booklet, Preferred Riderwood Realtor

Top 1% of Agents Nationwide • #1 Lister in The Regency, Mutual 25
Weichert Top Producer • Seniors Specialist
Community Resident • Former Montgomery County Teacher



Email: sueheyman@aol.com • Website: www.sueheyman.com
Office: 301-681-0550

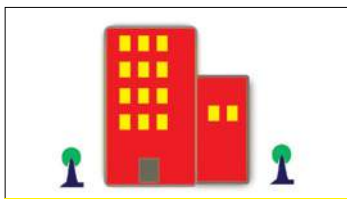


Sue Heyman 301-580-5556



COMING SOON! \$160K

The Fairways "E" Model
2BR, 2FB, fresh paint, new carpet, kitchen updates, overlooking the fountain!



COMING SOON! \$275K

The Greens "M," Garage Space
3BR, 2.5BA, large enclosed balcony, fresh paint, carpet & more updates underway, 1530 sf!



LISTING UNDER CONTRACT! \$99K

"Hampton" Co-op Apartment
2BR, 1FB, full-size w/d in unit, all utils incl in monthly fee, assigned parking!



LISTING UNDER CONTRACT! \$334,900

The Greens "L" Model + Gar
3BR, 2FB, superb kit & BA renov, granite & stainless, all season sunroom/upgraded HVAC!



LISTING UNDER CONTRACT! \$425K

"Barstow A" Patio Home
3BR, 2FB + sitting rm & sunroom, updated kitchen, 2-car garage, close to Norbeck gate, 1500 sf!



LISTING JUST SOLD! \$173K

The Overlook Hi-Rise "A"
Luxury 1BR, 1.5 BA, table-space kitchen w/window, gorgeous view, garage space!



LISTING JUST SOLD \$330K

Villa Cortese "F" with Garage
Stylish 2BR + Den, 2FB, almost 1500 sf, sep. DR, huge kitchen, coveted garage space!



BUYER JUST SOLD! \$365K

Turnberry Courts "W" Model
2BR + den, 2FB, almost 1500 sf, golf course views, enclosed balcony, garage space!



LISTING JUST SOLD! \$389K

Easton Patio Home
Twin owner's suites, 2FB, table space kit., fabulous, sunroom w/ green view, two car garage!

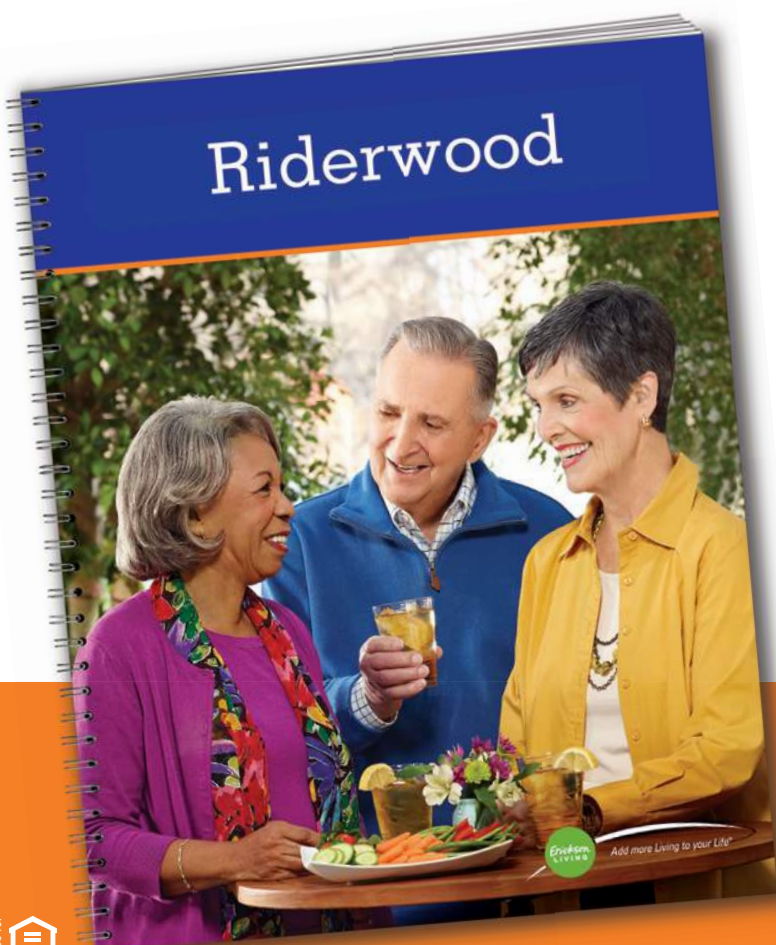


LISTING SOLD! \$715K

Regency "Oak Hill" Model
Stunningly updated 4BR, 3FB, two lvls, HWDs, 2-car gar, backs to treed area!

Get the facts about **ACTIVE RETIREMENT LIVING** at Riderwood.

The comprehensive Riderwood brochure is packed with the crucial information you need—and the exciting details you want—about carefree senior living at Silver Spring's premier continuing care retirement community.



Don't waste another moment
wondering what retirement
would be like at
RIDERWOOD.

**Request your FREE
brochure today!**

**Call 1-800-403-2106
or visit
RiderwoodCommunity.com.**



FREE 38-PAGE BROCHURE
written by the retirement experts.

HEALTH & Fitness

■ FISH (Friends in Sickness and Health)

FISH Is Here to Help

by Beth Leanza

FISH is an organization of volunteers. We are not medical specialists, nor physical therapists. But we do want to help you when you need it.

All the used equipment we lend out is donated to us. Although we try to eliminate any equipment that is broken, we strongly suggest that you have your therapist check it out.

We are here for both residents and employees, and there is no fee. You can just try out something, even if you are planning to purchase the equipment.

We often run low on tub stools, also known as shower chairs.

Borrow First

Are you thinking about purchasing assistive equipment? You may not know that there are many variations – which version do you want? Borrow from FISH first to try it out. You can always bring one item back and borrow another (if it is available!).

If you purchase equipment, you may not be able to return it to the medical supply company. And if you have used Medicare, you may not be eligible to purchase another item through Medicare.

Volunteers

If you have trained as a FISH volunteer, call Beth Leanza at (301-598-4569) to let her know how it went and if you think you are ready to do a session on your own.

General Information

FISH is open Monday to Friday, from 10 a.m.-4 p.m. in Clubhouse II. FISH's new phone number is (301-598-1345). When there is no one in the office, the call forwards to the E&R office at (301-598-1320). After hours, the E&R staff can accept returns and help a person borrow something.

For more information about FISH, call Beth Leanza, president, at (301-598-4569).

Health & Fitness In Brief

Al-Anon Meeting: Al-Anon (for family and friends affected by alcoholism) meets Fridays at 2 p.m. at Our Lady of Grace Church Parish Center, near Leisure World. Enter through the back door (15661 Norbeck Blvd., Silver Spring). For more information, call Bridget at (301-598-3043).

Alcoholics Anonymous (AA): Newcomers welcome. (If outside Leisure World, check in at the main gate.) Meetings are Mondays at noon (Step Meeting) and Thursdays at 6 p.m. (Big Book) in Clubhouse I. For questions, contact Laurie at (240-558-4454).

Alzheimer's Caregivers Support: The Alzheimer's Support Group meets the first and third Wednesday of each month at 3 p.m. in The Inter-Faith Chapel library. For more information, call Sunny at (301-438-2446).

Bereavement Support Group: If your spouse or long-term partner died in the recent past, you may be able to participate in a twice-monthly bereavement support group that meets on Tuesdays, 3-4:30 p.m., in the conference room at MedStar Health, 3305 N. Leisure World Blvd. The group is sponsored by the Jewish Social Service Agency (JSSA) Hospice and facilitated by Annette Waaler Volk, LGSW. Registration is required, and three months must have passed since the death before attending the group. If interested, please call Suzanne Adelman, LCSW-C, JSSA Hospice, at (301-816-2683).

Essential Tremor Group: The next meeting of the ET group is Thursday, Aug. 3, at 10:30 a.m. in Clubhouse I. The group meets the first Thursday of the month.

Free Blood Pressure Testing: Come to Clubhouse I for free blood pressure testing, available on the first and third Tuesdays of the month from 9-11 a.m.

Memory Café: The next meeting of Memory Café is Thursday, July 27. Memory Café meets the last Thursday of every month from 2-3:30 p.m. in Clubhouse I. The program provides social engagement for individuals living with early stage memory loss. Registration is required. To register, contact Lindsey Vajpeyi at (240-428-1342) or (lvajpeyi@alz.org).

Parkinson's Support Group: The Leisure World Parkinson's Support Group was created under the auspices of the Parkinson Foundation of the National Capital Area to provide support to patients suffering from Parkinson's disease (PD) and their families and caregivers. The group meets the second Tuesday of the month at 3 p.m. in Clubhouse II. Usually there is a presentation by a speaker with knowledge about PD, physical therapy or some other related subject, followed by a period of Q&A. There are no memberships or fees to pay, and the meetings are open to anyone who may be interested. Questions? Contact Ray Weil at (301-598-3447) or (raywwjr@hotmail.com).

Stroke Support Group: You are not alone! The Leisure World Stroke Support Group invites stroke survivors and caregivers to its monthly meetings (except July and August) on the second Wednesday from 1:30-3:30 p.m. in Clubhouse II. No registration is needed and all are welcome. For more information, contact Sally MacDonald at (240-669-4233) or (sn3macd@aol.com).

Foot & Ankle Specialists of the Mid-Atlantic

*Now the preferred podiatry practice
at MedStar Health at Leisure World*

End your toes woes!

Walk pain-free!

Visit Dr. K at MedStar Health
at Leisure World,
3305 N. Leisure World Blvd.,
for treatment of your toes,
heels, ankles and feet.

Dr. Freedman & Dr. Kathrotiya-Mago

Leisure World Plaza Professional Building

3801 International Dr. • Suite 204 • Silver Spring, MD 20906

www.footandankle-usa.com

Call today: (301) 598-0130

Leisure World News
OF MARYLAND

WANTED:

21 ~~45~~ People

to try NEW AUDIBEL® A4™ wireless hearing aids!

Are you, or someone you know, struggling with hearing loss?

This is a great opportunity to try top level technology hearing aids. Audibel Hearing Care Centers will let 21 people with hearing loss experience wireless sound. Call soon because we have to limit this offer to the first 21 people with hearing difficulty who contact us. You are also invited to receive a FREE Video Otoscope inspection* of your ear canal and a FREE hearing screening.

3 DAYS ONLY!

TUESDAY - THURSDAY • August 1st - 3rd

1. Electronic hearing screening by our licensed hearing professional
2. Ear Scan – you will see your ear canal on a color TV screen with the use of our new video camera. Your condition may just be wax!
3. The latest technology! The Audibel A4 hearing aids are designed to make listening easy and enjoyable again. They feature our latest noise reduction and speech preservation system, which is designed to deliver more clarity, even in noisy environments.
4. If you currently have hearing aids, we will be cleaning and servicing them at **NO CHARGE**.

 **In home appointments available!**

*If you are experiencing any of the above, call us today for a **FREE HEARING CONSULTATION** during this event!*

August special:

**\$800
OFF**

a pair of Audibel
premium hearing aids!

Exp: 8/03/17

August 1st - 3rd only!



Atlantic Hearing Centers
10400 Connecticut Avenue • Suite 510
Kensington, MD 20895

Call TODAY - (301) 637-7256

www.atlantichearingcenters.com



Special Guest

Audibel factory specialist, Patrick Thomas, will be in our office for this special event to answer your questions about hearing aids – **AT NO CHARGE!**

**CALL TODAY TO
CHECK YOUR
BLUECROSS BLUESHIELD
FEDERAL BENEFITS!**

CLUBS, GROUPS & Organizations

■ Garden Plot Group

Gardens Teeming with New Residents

by Darrelyn Pilgrim

We have bees! In early July, the Garden Plots Group welcomed a new beekeeper, a new hive, and a new family of bees that reside in a new location beside Shed 5.

Gardener of the Month

The Group's July gardener of the month is Mary Lalley,

Shed 5 shed master. Lalley's continual efforts and maintenance is a great asset to the Garden Group. She is constant and reliable, and often works behind the scenes to enhance our efforts and help things go smoothly.

Next Meeting

The next monthly meeting is Tuesday, Aug. 8, at 9:30 a.m. in Clubhouse I.



Black-eyed Susans and lilies fill the gardens with rich color. Photos by Darrelyn Pilgrim



Asian squash are a summer staple at the gardens.



A melon is camouflaged by the stalks and leaves that surround it.

■ Ballroom Dance Club

From Waltz to Rumba, Dancers Find the Beat

by Joyce Hendrix

If you are new to the Leisure World community, please come to one of our monthly dances to see what we are all about.

Bands play all types of ballroom dance music, including both slow and fast waltzes, rumbas, foxtrots, swing, tangos, merengues, cha-chas, quickstep, hustle and even a few polkas.

The Club dances to the music of seven different bands from January through November.

For information about the Club's upcoming dance, see the events and entertainment section of this

publication. Last month's dance with music by the Monaldi brothers' ensemble, known as Mixed Company, had an excellent turnout of 95 dancers, almost meeting the Crystal Ballroom's 120-person capacity.

August Dance

The Saturday, Aug. 26, Hawaiian themed dance features Mike Surratt and the Eclectic Coalition Band, voted by the Club as the favorite music to dance to in 2016.

Make early reservations to ensure your place at the table for this much-awaited annual dance. Bring your dancing shoes; we look forward to seeing you there!

■ Arts In Motion (AIM)

Black Tie Optional

by York Van Nixon III

If you like, put on your high-heeled sneakers and your glad rags for an evening of big band music. The Thad Wilson Jazz Orchestra and vocalist Steve Washington come to Café AIM Friday, Aug. 18, to deliver one night of elegant listening.

Close your eyes and remember when going to a jazz concert was more than a diversion; it was a night when lifelong memories

were made. Ticket stubs from this evening may even find their way to your scrapbook.

For details about this and more upcoming performances, visit the Events and Entertainment section of this publication.

Quarterly Meeting

Arts In Motion holds its second meeting of the year Tuesday, Aug. 8, at 11 a.m., in Clubhouse I.

Please bring your ideas for future programming.

Molds: Regular, Sprig, Press or Combo



Pour and press piece by Gail Bragg. Photo by Gail Bragg

by Gail Bragg

The Ceramics Club pours liquid clay, called slip, into a mold to make earthenware ceramic pieces. The molds are made from plaster, and we have over 2,000 of them. Plaster quickly absorbs water from the slip, leaving a clay shell inside of the mold.

Ceramicists can also take soft clay and press it into a shallow pattern or impression on a mold, then peel it away, giving you a nice design to use as an ornament or magnet, or to attach to a vase or mug. Some molds are made especially for this technique.

The designs seen on Wedgwood, for example, are formed in one-piece “sprig” molds. A press mold is similar to a sprig mold but is two-piece instead of one piece. The soft clay is pressed

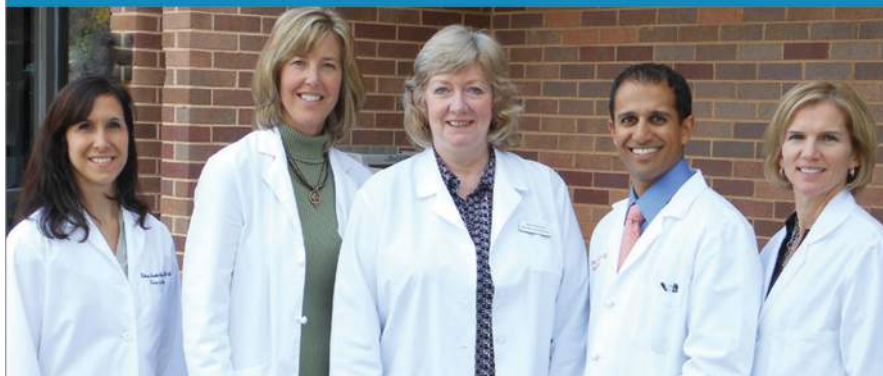
into the decorative side of the mold, and then the flat piece of the mold is pressed down on the clay.

The clay is then removed from the mold, leaving a nice design with a flat back. Ceramicists can also press balls and strips of soft clay into a mold, ending up with a textured ceramic piece. Club members experiment with this technique at our next class on Saturday, Aug. 12. Any interested members should sign up for the class in the studio.

The Ceramics Club’s \$10 annual membership fee includes instruction on how to make your own ceramic pieces. We welcome new members, so drop by our studio in Clubhouse II. You can view some of our ceramic pieces in the gift shop in our studio; they are for sale with proceeds going to charity. We hope to see you soon!



Hearing is one of the joys of life. Don't neglect it!



From left: Kathryn A. Balestino-Estes, AuD., Cynthia Chrosniak, M.D., Jane Cooke, AuD., Nicholas Mehta, M.D., Heather Schwartzbauer, M.D.

We have a team of audiology doctors and otolaryngology physicians who work together in two convenient locations to help you.

MEET OUR AUDIOLOGISTS

Dr. Jane Cooke and Dr. Kathryn Balestino-Estes

- Comprehensive and personalized evaluations
- The latest digital hearing instruments from leading manufacturers
- Solutions to fit your hearing needs, lifestyle, and budget
- Many insurance plans offer hearing aid benefits
- Financing Plans available

We are conveniently located in the Professional Building in the Leisure World Shopping Center above Sandy Spring Bank.

LEISURE WORLD PLAZA

3801 International Drive
Silver Spring, MD 20906,
Suite 206

PROFESSIONAL OFFICE BUILDING

18111 Prince Phillip Drive
Olney, MD 20832, Suite 224

CALL TODAY TO SCHEDULE AN APPOINTMENT!

301-774-0074

WWW.MONTGOMERYCOUNTYENT.COM

\$300 Off

a pair of digital hearing aids

\$400 Off

a pair of digital hearing aids when you upgrade your existing aids



Montgomery County **ENT**
EAR, NOSE AND THROAT SPECIALISTS

Drs. Chrosniak, Schwartzbauer and Mehta, M.D.

Invasion of the Four-Legged Favorite Friends

by Ann Bolt

Clubhouse II has a real menagerie going on this summer. Horses, dogs and ducks are showing off in the gallery area, thanks to the talents of artist Nancy Albrecht.

For a little over a year, Albrecht has made an impression with her pastel paintings. She has a Bachelor of Arts in fine arts from University of Maryland, and took graduate courses in animal science.

After 30 years as a government consultant, she returned to painting in 2002. For the last 15 years, she has worked primarily in pastels, winning many local awards for her animal portraits. She has lived in the area for most of her adult life.

Albrecht rides her horse four times a week and takes her to shows. She is a licensed Master Wildlife Rehabilitator for the State of Maryland, working with injured and orphaned

squirrels, opossums, rabbits and all creatures great and small, in Columbia, Md.

In her spare time, she is a dog walker in Leisure World. She has a husband, a daughter, a dog, two horses and two parakeets.

Open Studio Project

An Open Studio exhibit features pets and animals created by 11 Rossmoor Art Guild (RAG) artists in various mediums. Cats, dogs, pandas, a parrot, a pelican, hens, roosters, sea creatures and a joey are all represented.

Animal lovers and painters include: Maria Clark, Ann Bolt, Ellen King, Violet "Vicky" Batkin, Donna Ward, Maggi

Mannarino, Loretta Morgan, Dee Williams, Phyllis Lowinger, Nancy Albrecht and Patty Elton.

Some of these artists also contributed paintings for the

monthly exhibit, with no particular theme, and were joined by: Marvin Sirkis, Maria Hernandez, Lorenzo Merole and Barbara McCool.

The next Open Studio project, scheduled for September, features abstract flowers painted in the manner of O'Keeffe, Mapplethorpe,

Van Gogh, Monet, or an artist of choice.

Classes

Summer classes are underway, with oil painting, watercolor, acrylics and

drawing available. RAG teachers include Barbara Piegari, Ron Erlich, Fran Call, Sharon Minor, Genevieve Roberts, Millie Shott and Firouze Sadeghi.

Open Studio is held on Saturday mornings. A schedule of classes is found in the foyer and in the art studio. Sign up if you are interested in plein air painting.

Open House and registration is held on Thursday, Sept. 7, in the Studio.

The year of study for RAG starts in September. Enroll, rent a locker, buy your plastic cover to keep the tabletops less messy, and then sit back and enjoy.

Kudos

Congratulations to Millie Shott's student Dee Williams, who was awarded an Honorable Mention for her painting featuring children and animals in the Village of Friendship Heights Art Show.



Nancy Albrecht, pastel artist. Photo by Alicia Braun

We Provide Compassionate Urology Care for the Residents of Leisure World.

Chesapeake Urology is conveniently located at 3801 International Drive in Silver Spring, just around the corner from Leisure World.



Lisa N. Hawes, M.D.
General Urology and Female Urology



Richard A. Kurnot, M.D.
General Urology for Men and Women



Bernard J. Rogus, M.D.
General Urology for Men and Women



Cheryl Shih, M.D.
General Urology for Men and Women: English, Mandarin Chinese, Spanish



Anup A. Vora, M.D.
General Urology for Men and Women: English, Hindi, Gujarati, Spanish

Chesapeake
UROLOGY

The most personal care for life's most personal issues.

301-598-9717

chesapeakeurology.com

Prostate, Bladder and Kidney Cancers and Conditions • Kidney Stones • Erectile Dysfunction • Urinary Tract Infections • Pelvic Pain • Bladder Control Conditions • Enlarged Prostate
Female Urinary Incontinence • Pelvic Organ Prolapse • IC/Painful Bladder • Pelvic Pain

Kiwanis Celebrate 50 Golden Years of Service

by Jack Colvis

On June 23, state and local officials attended the 50th Anniversary Charter Celebration of the Kiwanis Club of Leisure World in the Clubhouse I Crystal Ballroom.

During the course of the evening's celebration, citations, proclamations and resolutions were delivered to Club members on behalf of Sen. Chris Van Hollen, The Maryland Senate (sponsored by Sen. Roger Manno), and The General Assembly of Maryland (by Del. Benjamin F. Kramer) in recognition of the Club's continuous community service.

Councilmember Sidney Katz presented a certificate of appreciation designating June 23, 2017, as "Kiwanis Club of Leisure World Day."

The certificate is in recognition of the Club's numerous service programs and activities, including the develop-

ment of local Kiwanis leadership youth clubs; the provision of an annual scholarship to a graduating local high school senior and one-on-one tutoring of elementary school students; recognition of the community's war veterans; clothing drives and donation events.

Each year, the Kiwanis Club also recognizes a resident who has contributed to creating a positive impact in the community. Dora Pugliese received the Club's "Citizen of the Year" award. The Club also recognized Heather Benjamin-Alexis as "Citizen of the Year" for

her outstanding service and commitment.

Kiwanis International is a global service organization of volunteers committed to improving the world one child and one community at a time. The Kiwanis Club of Leisure World shares in the work of this commitment.



"Kiwanian of the Year" Heather Benjamin-Alexis, center, with Jack Colvis and Anita McFarlane. Photo by Fred Shapiro



"Citizen of the Year" Dora Pugliese, left, with Heather Benjamin-Alexis. Photo by Fred Shapiro

Memory Care at
Olney Assisted Living

Feels
Like HOME



We enhance the quality of life for seniors with memory issues by providing compassionate, nurturing care within a lovely and comfortable, home-like setting.


Residents and their families can stroll through the private courtyard with beautifully landscaped walking paths, gardens and seating areas, or relax by the fireplace in our cozy living room. Our Neighborhood Square, at the center of this thoughtfully designed environment, offers large community spaces for stimulating events and daily interaction, an arts and crafts studio, a health center and beauty and barber shops.

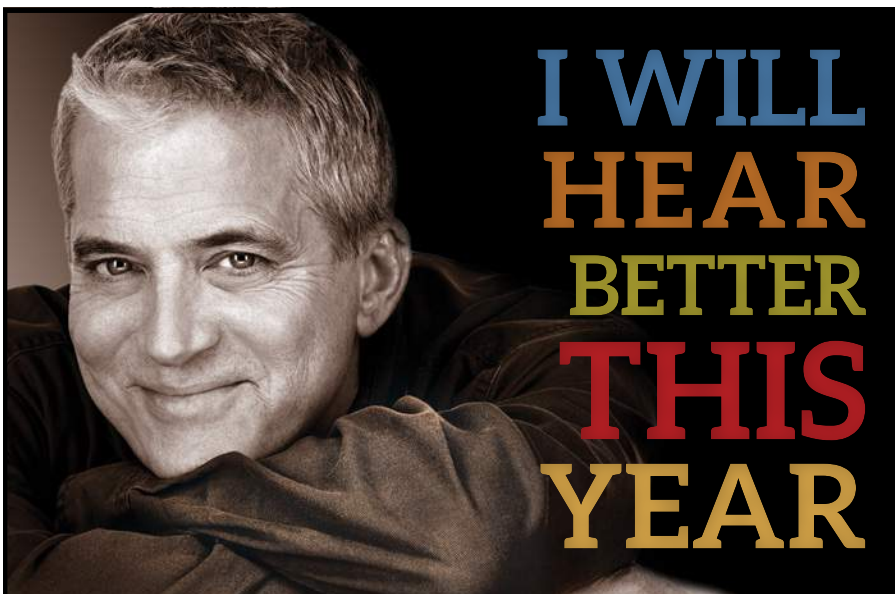
Come see how positive partnerships at Olney Assisted Living can make a profound difference in the life of your loved one. Call (301)570-0525 to schedule a private tour or to attend our next community event.

OLNEY
ASSISTED LIVING

Memory Care *by design.*

16940 Georgia Avenue | Olney, Maryland 20832
(301) 570-0525 | www.olneymemorycare.com

 An Equal Opportunity Employer-M/F/D/V



At Hearing HealthCare, Inc., we truly believe that **better hearing leads to a better life.**

Call today to schedule an appointment. **301.637.7238**

\$500 OFF

an AGX5, 7, or 9 two-device system. Expires 7/31/17.

COMPLIMENTARY CONSULTATION

Call today!
Expires 7/31/17.



Hearing HealthCare, Inc.
Doctors of Audiology

Serving the community since 1996

Wheaton • 3913 Ferrara Dr
Rockville • 2403 Research Blvd, Ste 100

HearingHealthCareInc.com 

AudigyCertified™

■ Fun and Fancy Theatre Group

Aug. 3 and 5: Auditions for 'A Bob Hope USO Show'

by Hannette Allen

The theme of Fun and Fancy's September show is "A Bob Hope 1940's USO Show," directed by Nancy Koski. Auditions are Thursday, Aug. 3, at 7 p.m. in Clubhouse II, and Saturday, Aug. 5, at 10 a.m. in the Clubhouse II auditorium.

For a list of the show's songs, contact Nancy at (irishchero@comast.net).

Residents can audition with any song, but please bring a copy of the sheet music for the accompanist.

The show follows our first meeting of the new membership year on Wednesday, Sept. 6, at 7:30 p.m. in the Clubhouse II auditorium

Performances are given at least once a month, year-round, and are always much appreciated by the audiences, and lots of fun for the performers.

The outreach group visited Winter Growth on June 14, and Shady Grove Rehab July 12, with future visits planned to The Village at Rockville on Friday, Aug. 4, and Holiday Park Senior Center on Wednesday, Aug. 9.

Music is mainly Broadway hits and other favorite songs. Singing, dancing and comedy are the order of the day. Sometimes the audience joins the group in sing-alongs.

If you are interested in sharing your talent with an audience outside of Leisure World, call Nancy (Marchone) Koski at (301-288-7808).

Outreach members do not have to perform every month, and rehearsals are kept to a minimum.

The outreach group is a very worthwhile endeavor, producing much fulfillment for audience and performers alike.

Outreach Group

Although activities slow down for the Club in the summertime, the outreach program, which brings song and dance to senior centers, assisted living residences, and nursing homes in the area, continues.

Chairworks Plus Furniture Service

- Antique Restoration
- Furniture Repair
- Chair Gluing

Serving the
Leisure World Community
for over 30 years



Rick Sussman
301-502-0018
410-795-9147

ANTIQUE & VINTAGE JEWELRY BOUTIQUE

- Buy
- Sell
- Repair



We also have garden and home accessories

301-775-7889
202-689-7788

Olney Antique Village
16650 Georgia Ave
Olney, MD 20832

Hours: 11-5, Thursday through Monday

AUTO BODY

Rockville Central

Just off East Gude Drive

301-424-3500

**FREE ESTIMATES
IF YOU CAN'T COME TO US
WE WILL COME TO YOU**

SPECIAL OFFER

- ❖ Paintless Dent Removal from \$75
- ❖ Free Pick up & Drop Off
- ❖ Free Towing to Shop
- ❖ Free Touch Up Paint
- ❖ Lifetime Warranty on All Repairs
- ❖ Special Discounts for LW Residents

**We Happily Handle All Insurance
Claims for You**

Ask for Richard or Tony



**LEISURE
WORLD**
OF MARYLAND



Find Leisure World of Maryland
on facebook at:

[www.facebook.com/
LeisureWorldofMaryland/](http://www.facebook.com/LeisureWorldofMaryland/)

Standup Comedy, an American Tradition, Flourishes at Leisure World

by Al Karr

Standup comedy has been with us for a long time; just how long, no one really knows for sure. Did Adam kid around in the Garden of Eve? Did Moses and the Pharaoh do some private joshing?

Although Mel Brooks was a consummate joke writer and standup comedian, comedy probably didn't begin with Moses and the Ten Commandments as portrayed in Brooks' movie, "History of the World, Part One." Wherein God tells Moses to deliver His word to the people and asks if Moses heard Him, and Moses mutters, "Have to be deaf not to hear you."

Moses then emerges carrying three slabs—the 15 commandments. One slips from his grasp and shatters on the ground, and he announces, "The 15 – uhh, 10 commandments."

Standup comedy as we know it today was born at the turn of the 20th century's vaudeville and stage burlesque, where everything was rude and crude. Between acts of lady dancers in scant clothing—or less—the comedians would throw pies and toss insults back and forth, appealing to immigrant workers and others in the raucous crowds.

In an internet essay, part of "The Humor Code" series, Peter McGraw and Joel Warner quote historian Joseph Boskin's book, "The Humor Prism in 20th Century America," where he wrote that vaudeville shows often climaxed in a courtroom, "with prisoners and lawyers squirting at each other from water bottles and the judge demanding order with a wooden potato masher."

Who was the first person to stand up and joke? According to McGraw and Warner, some say it was Charley Case, an African-American vaudeville performer, and apparent forerunner of the many black comedians doing that job today. In his book, "The Legacy of the Wisecrack," Eddie Totoya wrote that in the late 1800s, Case would get on stage in New York's vaudeville theaters and do what no one

had done before—perform comic monologues without props or a costume.

Much of the standup themes that emerged survive today—money problems, nagging wives and complaining moms and mothers-in-law, and ne'er do well husbands.

So with that heritage, we of the Comedy and Humor Club gather for our weekly meeting to exchange jokes.

The Club does other things, too, like participate in Leisure World's 4th of July parade, and enjoy watching Club president Sam Hack's video presentation of classic television comedy shows on the last Tuesday of each month.

The last show was a June 27 replay of the, very funny standup comedy of Bengt Washburn, a Swedish-American Mormon. (Who said, for example, that he doesn't want anyone helping him to his car in the shopping mall

parking lot because he doesn't want them to know that he has no idea where it is.)

The Comedy and Humor Club meets every Tuesday from 1:30-3 p.m. in Clubhouse II.



SYNERGY HomeCare

*Suffered a stroke?
Recovering from surgery?
Loved one has dementia?
Need a companion?*

Call for a FREE Care Assessment 301.200.9292
www.synergyhomecare.com



Is the Idea of Moving

Starting to Grow on You?

Paulette Tievy

Direct: 301.651.3082
Office: 301.681.0550
Email: paulettetievy@gmail.com
www.myhomesdb.com/paulette



*If the idea of moving is starting to "grow" on you, allow me to show you how I can help that idea blossom. Whether you are buying or selling, it helps to get as much information as possible. Hurry! The spring market is here!
Call me for a free consultation today!*

High-rise, Mid-rise, Townhouse, Garden, and Single Family Properties Starting in the Mid \$50,000's

Listing & Selling In LW Since 1989



Relationships
have rewards.
Introducing the
**Signal Premium
Bundle.**

A **Signal Premium** Bundle is just about everything
you'll ever need for your finances.

Signal Premium Membership Benefits include:

- » High-interest checking
- » Premium Money Market
- » Bonus rate increase on certificates
- » Complimentary boxes of checks
- » Discounted rates on personal and vehicle loans
- » Refund of mortgage appraisal fee

NEW BRANCH OPENING SOON IN LEISURE WORLD



not-for-profit | member-owned | personal | business | mortgages
FEDERALLY INSURED BY NCUA • EQUAL HOUSING LENDER

301-933-9100, ext. 298
signalfinancialfcu.org



■ **LW Green**

LW Green Overhauls Goals, Activities

by Harry Stoffer

LW Green, nearing its second birthday as an organization, plans to retool operations to better match its resources with the environmental interests and needs of the community and its residents.

LW Green decided on the retooling effort at a meeting June 28. The organization will discuss and decide on revamped goals and future activities at meetings in September.

All community residents are invited to make suggestions about environmental priorities. Residents may email their ideas to LW Green member Marc Narkus-Kramer at (mnarkus@verizon.net).

Despite the planned “reset,” LW Green’s fundamental purpose of “caring for one another by caring for our environment” is unchanged, said organization co-president Janice McLean.

One expected option for the future is to hold regular and periodic environmental events, some featuring accomplished environmental experts as speakers, and all of them open to the entire community.

LW Green has postponed its plan for another large-scale environmental festival. A first festival in April 2016 drew 200 attendees and was recognized as a signature event for the then fledgling organization.

The rescaling of group operations also will enable members

to devote more time and energy working to block or revamp plans for a new Administration Building, widely seen by some members as the biggest environmental challenge in the community.

The plans, as currently drawn, would result in the destruction of 57 trees and other natural plant-life and create a new environmental burden with the demolition of the existing building, LW Green contends.

LW Green went on record last year, asking the Leisure World Community Corporation (LWCC) board of directors to reconsider the plans. The board did not respond directly but kept pressing ahead with its plans.

Some LW Green members also have been seeking a community referendum on the plans, and are sponsoring a town hall meeting on the issue, set for Friday, July 28, at 1:30 p.m. in the Clubhouse I Crystal Ballroom.

Besides the big festival in early 2016, LW Green has held a community forum on chemical pesticides, an environmental film festival and a tour of the county recycling center. It also conducted a roadside cleanup project on nearby highways.

Its principal interests have been to protect and enhance the community tree canopy, promote recycling, improve area stream quality and discourage use of lawn chemicals.

More details about the September planning meetings are to come.

4 great reasons to consider buying a home today instead of waiting:

1. Prices Will Continue to Rise
2. Mortgage Interest Rates are Projected to Increase
3. Either Way, You are Paying a Mortgage
4. It's Time to Move on with Your Life

If the right thing for you and your family is to purchase a home this year, buying sooner rather than later could lead to substantial savings. Call our office today to speak with one of our knowledgeable agents to assist you in today's marketplace.

LONG & FOSTER
REAL ESTATE

CHRISTIE'S
INTERNATIONAL REAL ESTATE

Long & Foster. For the love of home.®



301-598-7500 Office
Leisure World Plaza

3836 International Drive
Silver Spring, MD 20906

LW TOP OFFICE PRODUCER
LEISURE WORLD PLAZA
MAYNARD E. TUROW
AGENT 18 YEARS...LISTINGS, REALES, NEW SALES

**THINKING OF SELLING??
Or Friends-Relatives Buying?**

Living in and working in this community, I give you the attention to detail your property needs to sell successfully. I know the marketplace and can bring you excellent results.



(O) 301-598-7500

FREE BROCHURES, COMPS, LAYOUTS, INFO
Direct: 301-518-3834
maynardturow@yahoo.com
Website: MaynardTurow.LNF.com

**WE BUY
VINTAGE
CLOTHING**

202-465-0699

Walk in Vintage
3758 Howard Ave
Kensington
Maryland 20895

Officers Reelected to a Second Term

by Patricia Means

At the general membership meeting on June 29, the Association reelected Juanita Sealy-Williams, president; Alfonso Holston, vice president; Laura Wiltz, treasurer; and Elizabeth Brooks-Evans, recording secretary. Lois Pope Fuller was elected corresponding secretary.

These officials comprise the 2017-2018 LWAAAC board of directors (Executive Committee). LWAAAC founders Gloria Morris and Shirley Henderson officiated the swearing in ceremony.

Committees

The LWAAAC Board and committee chairs presented year-end reports at the meeting. Jeanne Markray relinquished the chair of the program committee and Elise Nicholls was appointed to the position.

An executive and planning meeting for officers and standing committees is Tuesday, Aug. 29, at 11 a.m. in Clubhouse I.

Membership

Twelve residents joined the Association and 77 members renewed their membership at the meeting. If you were unable to attend, you may register for new or renewed membership via the LWAAAC mail slot in the Clubhouse I E&R Office, or send it to (LWAAAC, PO Box 12316, Silver Spring, MD 20908). Registration should include your name, address, telephone number and email address, along with a check of \$20 payable to LWAAAC.

At the meeting, Celebrations II gained 11 members for profile interviews and two interviewers. There is still time to commit to a profile interview or serve on the committee by contacting us at (lwaaac1@gmail.com) or Patricia Means at (301-598-0550).

July 4 Parade

About 25 LWAAAC members participated in Leisure World's 4th of July Parade. Members walked and rode in three decorated cars and a golf cart, and were cheered by the curbside crowd of residents and friends.

The 2017-2018 session begins in September and traditional and new events will be announced at that time. We look forward to your participation in the Association and invite you to send program suggestions and ideas to the LWAAAC board of directors at (lwaaac1@gmail.com).



LWAAAC president Juanita Sealy-Williams, left, meets with LWAAAC founders Gloria Morris and Shirley Henderson at a meeting June 29.

Personal Care Services In The Comfort Of Your Home

Family Owned & Operated
Serving Montgomery County



- Household chores
- Medication reminding
- Daily living and companionship
- Meal planning, preparation and monitoring of eating habits
- Overseeing activities, such as walking, to minimize the risk of accidents
- Shopping for groceries, with or without client
- Bathing and grooming and general personal hygiene
- Help with planning and making decisions
- Nursing services and many more!



Call for a Free Consultation and Assessment • 301.717.2212 • www.bestseniorcare.us



Kathleen Kane, Assoc. Broker



Eileen Kane, Assoc. Broker

Kathleen and Eileen Kane

Honored To Serve You For 35+ Years With
Cathy Gilmour Real Estate And Proudly Continuing That
Same High Level Of Service With Long & Foster

T – 2 BR/2 BA w/ den in **Bldg 2, Turnberry Courts**, table-space kit. w/ window, enclosed balcony, ready for you to move right in! **\$259,900**

CABOT – 3 bedroom ranch in **Mutual 10**. Modified floor plan includes updated and remodeled kitchen with newer cabinets, counters, and ceramic tile. Wood floors, fenced flagstone patio, 1-car garage with extra storage. **\$299,000**

F – Nestled in the treetops with a view of the golf course. In Bldg. 3 of **The Greens**, two bedrooms, two baths, newer kitchen with updated cabinets, granite counters, new stainless steel appliances, wood floors, new HVAC. **\$189,000**

SHERWOOD – NOW ON MARKET! Three bedroom ranch in **Mutual 13** boasts a fabulous renovation! New wood floors, new kitchen (including cabinets, granite counters, ceramic tile floors, all new stainless steel appliances). New baths include new porcelain tub, new ceramic tile shower and floors, new vanities w/ granite tops. Modified 1-car garage plus den and extra storage. **\$329,000**

H – Bldg. 2 of **The Greens**. New Listing! End unit w/ light on 2 sides, table-space kit. w/ windows and formal dining rm, living rm, 2 BR, 2 full baths, enclosed balcony. **And it has a garage space and a storage rm!** New wall-to-wall carpet, fresh paint, new range and built-in microwave, new (2016) HVAC. Move right in! **\$249,900**

*Dedication makes
the difference!*

LONG & FOSTER REAL ESTATE, INC.

Residential & Commercial Real Estate • Mortgage • Title • Insurance • Property Management



Direct: 240-460-8647

Leisure World Plaza Office: 301-598-7500

Kathe.E.Kane@Gmail.com

Check out our archives at www.residents.lwmc.com/lwnews

Club to Honor One of Its Own

by Marcia L. Elbrand

The monthly meeting of Rossmoor Woman's Club (RWC) board on Monday, Aug. 14, is followed by a luncheon at Clubhouse I. This special event honors longtime RWC member Ileana Eblighatian, 95, who most recently served for nearly a decade as the group's Leisure World News correspondent.

Why Join

"Small enough to be friendly, yet large enough to have an impact," is how membership chairperson Arlene Siller explained the RWC. The Club's objective is "to work together volunteering for projects that raise funds in support of selected charities in Montgomery County."

The Club's membership recruitment began July 1. Annual dues are \$40 and membership, which is open to all, "has attracted a

genuinely diverse group of really talented women," said recently re-elected president Aggie Eastham.

More than 100 individuals, both renewals and brand new members, have already sent in their 2017-18 membership dues. To join this dynamic organization that includes retired educators, attorneys and entrepreneurs, among others, send a \$40 check, made payable to Rossmoor Woman's Club, to Arlene Siller at (3100 North Leisure World Blvd., #909, Silver Spring, MD 20906). For questions, contact her at (abs929@yahoo.com) or (301-460-7859).

Community Work

Last year, RWC members raised more than \$10,000. The funds benefited Casey House Hospice, Montgomery Hospice, the Betty Ann Krahnke Shelter for domestic violence victims, Fisher House Foundation (housing families of Wounded Warriors), and two

programs at Leisure World—Fireside Forum and FISH (Friends in Sickness and Health).

The Club also awards scholarships each year to graduating Blake High seniors and undergraduate women in the A.C.E.S. program at Montgomery College. In a new initiative coordinated by education chair Rita Posner, RWC provides support, classroom library books, and volunteering to a Pre-K/Head Start class at Harmony Hills Elementary School in Silver Spring.

Upcoming Events

Fundraising events this fall include a Monday, Oct. 2, vendor sale at Bedford Court; a Wednesday, Oct. 18, fashion show by Chico's and luncheon in Clubhouse I; the annual weeklong sale of pecans, fruitcakes and See's chocolates beginning Monday, Nov. 13; and the Wednesday, Dec. 6, Holiday Luncheon at Manor Country Club.

■ Jewish Residents of Leisure World

Services, Membership and an Upcoming Movie

by Jonas Weiss

On Thursday, July 27 at 1:20 p.m., JRLW and the Bender JCC Coming of Age of Maryland program present "Hummus! The Movie" in the Clubhouse II auditorium. For more information, see the Events and Entertainment section of this publication.

Religious Services

Jewish Residents of Leisure World (JRLW) holds religious services every second Saturday of the month at 9:15 a.m. in Clubhouse II, under the guidance of Cantor Michael Kravitz, and abbreviated services and Torah and Talmud studies with Rabbi Moshe Samber on every other Sabbath morning.

Religious services are also led by Rabbi Gary Fink on the first Friday of every month at 7:30 p.m. in The Inter-Faith Chapel. We have services for every major Jewish holiday, from Rosh Hashanah to Shavuot, with Yiskor services at each holiday.

Membership

Membership and participation are essential to keep up these and many other activ-

ities. Membership payment is now due for the 2017-2018 fiscal year. If you have not yet joined or renewed your membership, send checks of \$20 per person, made out to JRLW, to Milli White at (2901 S. Leisure World Blvd., Apt. 106, Silver Spring, MD 20906). For questions, call Milli at (301-438-0211).

Come to JRLW meetings in Clubhouse II on the first Tuesday of the month at 7 p.m.

in Clubhouse II to learn more about what we do, and to see how you can get involved.

Donations

To honor and memorialize your loved ones in our new Yiskor Memorial booklet, use the form in the JRLW newsletter and send \$6 for each name to be printed. The deadline for these donations is Friday, Aug. 11.

Donations for the Torah maintenance fund (\$25 minimum, checks made payable to JRLW) should go to Carol Wendkos at (14805 Pennfield Cir., Apt. 212). Janet Lazar at (15311 Beaverbrook Ct., Apt. 1B) will take care of donations for prayer books (\$25 minimum).

Send donations for Kiddush or an Oneg (\$25 minimum for either), or Yiskor or general Tzedukah to Susan Weiss at (3739 Glen Eagles Dr., Silver Spring, MD 20906).





Keep Your Teeth For a Lifetime!



Your friendly neighborhood dentists
are right down the street!

MEET OUR DENTISTS

Dr. Cyrus Allafi and Dr. Sara Saba D.D.S.

- Comprehensive and personalized evaluations
- Emergency care offered
- Same day pain relief
- Comfortable tooth removal
- Most insurance plans accepted
- Financing plans available
- Our caring staff are always happy to help

NEW PATIENT SPECIAL OFFER

\$99
(a \$310 value)

Includes Comprehensive Examination,
Necessary X-rays, and Routine Cleaning*

*In absense of periodontal disease

CALL TODAY AND SCHEDULE AN APPOINTMENT!

301-871-6660 13975 Connecticut Ave.
Silver Spring, MD 20906
www.aspenhilldds.com Suite 302, Third Floor

Visit us at www.residents.lwmc.com/lwnews

Cool Off at Ice Cream Social

by Barbara Eisen

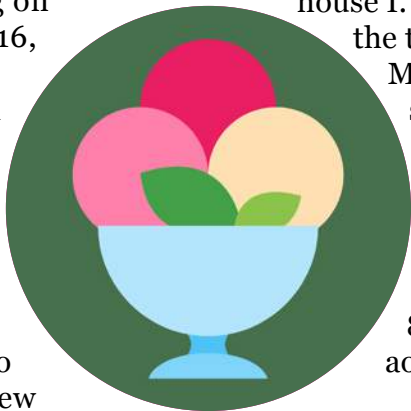
An Ice Cream Social highlights the Hadassah meeting on Wednesday, Aug. 16, at 7 p.m. in Clubhouse I.

Delicious toppings will be served with the ice cream. The cost is only \$10 per person, and the event honors new members.

Current members should bring a friend who would like to become a new member.

Send checks, payable to Hadassah, to Janet Lazar at (15311 Beaverbrook Ct., Apt. 1B, Silver Spring, MD 20906) by Friday, Aug. 11.

If you have questions, contact Janet at (301-598-4066) or (lazarjl@verizon.net). All residents are welcome to attend.



The Judaic Study Group

The Judaic Study Group meets on Monday, July 24, at 1:30 p.m. in Clubhouse I. Note the change of date from the third Monday to the fourth Monday of the month. The guest speaker is Naomi Daremblum, who will report on "The Jews of Portugal." She is a specialist in Latin American culture, art, and politics. Contact Peri Schuyler at (301-869-2968) or (perislaptop@aol.com) for further information.

Greeting Cards

Hadassah greeting cards are available for purchase; prices are \$2.50 each or five for \$10. Cards are displayed and sold at every Hadassah meeting.

Call Elaine Schenberg at (301-598-0079) or Jan Bloom at (301-593-7720) if you want to pick up cards or have them mailed for you for an extra postal charge.

Youth Project

Larelda Gruber (301-598-5922) is chair of Youth Aliyah/Children at Risk. The project helps disadvantaged children in Israel.

The goal is to create a circle of \$1000, made by individual contributions of \$40. Please send your donations to Larelda at (3200 N. Leisure World Blvd. #201, Silver Spring, MD 20906).

Membership

Hadassah sponsors many activities to further the worthwhile projects it supports in medical, educational, and social programs in Israel and in the U.S.

If you are interested in knowing more about Hadassah, contact one of our membership vice presidents – Carole Sonneborn at (301-288-4902) or (carole200@comcast.net), or Mimi Meltzer at (301-806-0976) or (mimi20852@aol.com).

■ NA'AMAT RBZ Club

Club Members Practice the Charity of Tzedakah

by Carole Mund

NA'AMAT is a charitable organization dedicated to helping NA'AMAT Israel provide educational day care programs, vocational training, legal aid for women, services and assistance for new immigrants as well as centers for the prevention and treatment of domestic violence.

The many activities we enjoy not only provide opportunities for socialization with our friends and neighbors, but also serve as fundraisers to support the many programs NA'AMAT provides.

Tribute Cards

Tribute cards are an excellent way to support and maintain these essential programs as well as to attain donor credit. NA'AMAT has cards to honor all occasions: from "Congratulations" for a special event to memorial cards. Each card is \$3.50 if purchased and sent by you, or \$4.50 if sent by Linda Schoolnick, tribute chairperson. Full donor credit is given for each card.

Unfortunately, the list of purchases for May and June has been misplaced. If you purchased tribute cards during that time, please contact Linda to receive proper credit. Contact Linda at (301-681-1076) with any questions.

Tzedakah - New Coordinator

"Tzedakah "is a custom of donating loose change each Sabbath to charity. NA'AMAT RBZ has little puskie boxes to encourage members to save and donate. Every penny counts in supporting the many programs NA'AMAT sponsors in servicing women and children.

Carol Milwit has offered to be the member in charge of coordinating the collection and replacement of the tzedakah boxes. Just drop your change or maybe your mah jongg winnings in the box and Carol will gladly collect the box and replace it with a new one. Full donor credit is given. Contact Carol at (301-288-7534) for more information.

Trips

A new trip to the Delaware Art Museum and High Tea on Wednesday, Aug. 23, is planned. Fliers will be sent out to members, or check for additional information in the Club Trips section of this publication. Make your reservation early so you do not miss this terrific experience.

Save the Date: Fashion Show

On Wednesday, Oct. 4, the Club holds its annual fashion show. More details are to come.

For more information about NA'AMAT RBZ Club, contact co-presidents Trudy Stone at (301-438-0016) or Gladys Blank at (301-438-9666).

In-Home or Office Computer Help

PC - Mac - Tablet - Smartphone



Hardware - Software - Network
Wireless Troubleshooting

Virus - Spyware Removal

Data Recovery

301-495-3390

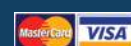
Press "2" if urgent

Bob Mann

watzanetwork.com
helpme@watzanetwork.com



Serving the Leisure World
community 10+ years
5,000+ customer
appointments!



• Insured

Watzanetwork? is a service of Watzan, LLC

Boomers Picnic in the Park

by Beth Leanza

The Club's next picnic is on Sunday, Aug. 27, starting at noon in East Norbeck Park. We are also planning a picnic for October.

Upcoming Movies

Aug. 19 – Hacksaw Ridge;
September – The Girl on the Train

The movies are shown at 7 p.m. in the Clubhouse II auditorium.

Mah Jongg

If you already know how to play Mah jongg, you can join the group on Tuesday or Wednesday nights at 7 p.m. in Clubhouse II. For information, contact Donna Copeland at (dc@grandmathegeek.com).

Join Us

Baby Boomer Club is purely social. We play games, watch movies, have dinners together, and dance.

If you would like to join, contact Susan Landesberg at (901-613-9031). Club dues are only \$5 per person for the year, checks only, payable to Baby Boomer Club.

Club members are part of a Google Group that communicates by email. We keep the emails limited to events that may be of interest to Club members.

If you do not have email you could miss a lot of updates and reminders! You are welcome to join, but encouraged to connect with another member who does receive email. If you joined but are not receiving Club emails, contact Beth Leanza at (301-598-4569).

Friday Hikes with Dawn

Many walkers meet up at the walk site, but if you want to carpool, contact Dawn Carlisle at (301-598-7098) by Thursday evening. Always bring water to each hike.

July 28 – Matthew Henson Trail (13421 Georgia Ave., Silver

Spring). Meet at the semi-circle of benches near the display map at 10:15 a.m. Bring water and a lunch. Go south on Georgia Avenue to Hewitt Avenue and turn left at the light. Turn right into the Global/Korean Mission Church (13421 Georgia Ave.) parking lot and park in the back.

Aug. 4 – Berma Road (10801 MacArthur Blvd., Potomac). Meet in the parking lot across from Old Angler's Inn at 10:15 a.m. Bring water and a lunch. Go through the Norbeck Gate and make a left onto Norbeck Road. Continue on Norbeck Road. (Norbeck Road becomes First Street for a short distance and then becomes Wooton Parkway.) Follow Wooton Parkway to Falls Road. Turn left onto Falls Road. Falls Road becomes MacArthur Boulevard. Continue on MacArthur Boulevard until you see Old Angler's Inn on the left. The parking lot is on the right.

Sunday Morning Walks

Some of our members walk

the entire Leisure World Boulevard loop on Sunday mornings. They meet up at 8:30 a.m. at Kelmscot Drive (just across from Arden Court). Occasionally they go out to breakfast nearby.

Weeknight Walks

For a shorter walk, about one mile around the Broadwalk in Montgomery Mutual, come to Clubhouse I at 7:15 p.m. to meet up with a few Baby Boomers. If you are new, please look around and introduce yourself, as they don't make any announcements. People walk at their own pace and return to the Clubhouse.

Volkssport Walks

Local walking clubs, such as American Volkssport Association (AVA) are in the area. One of our Boomers keeps information up to date on our website, (<https://sites.google.com/site/bbclwmd/>).

Click on "Calendar" to see all Boomer events, then the "Walks" link to see a list of upcoming walks.



The Smart Choice for Home Care.



You are a whole person and we believe that we have the opportunity to make your day a little easier and more meaningful. As one of Maryland's original home care agencies, we have earned the trust of thousands of local families. Call today to arrange care for just a few hours or around the clock.

- Expert matchmaking • Help with Personal Care • Companionship
- Transportation to Doctors' visits & appointments • Medication reminders
- Meal prep, housekeeping & laundry • Care supervised by Registered Nurses

Flexible hours – Consistent caregivers – Simple set up – Available 24 hours a day License: MD RSA #399

www.capitalcitynurses.com • 301.652.4344

All Kinds of Reminiscences

by Carlos Montorfano

Lee Hardy read “Today and Yesterday” by first quoting Emily Dickinson: “Dressed each morning with care for the act of poetry.”

She reminisced about her youthful adventures, comparing them to her time spent in the book club,

playing scrabble games and writing for the Writers’ Workshop.

Verna Denny read “Merengue,” about one of her favorite activities, dancing, and describes joining a group with other people who enjoy staying active.

Woody Shields continued describing white-tailed deer—their personalities

and activities—and humans’ expectations in sport hunting. Susie Hopper read several nice pieces, some of them included in a book of poems she wrote.

Dorothy Swift, a new member, read part of a book she is writing, “Colored, Catholic and Courageous,” about a visit to the convent of the Oblate Sisters, the first African American teaching order, founded in Baltimore 164 years ago. The group looks forward to hearing more.

Danuta Montorfano read “Lone Walker,” a poem that describes her enjoyment of an evening walk that reminded her of a Magritte painting with its shadows and lights.

Tom Anessi wrote a detailed and beautiful reminiscence about the contents of his childhood bedroom, when sleep seemed unimportant.

Kimi Sugimura read a

poem, “Travelling,” about the pleasures of that activity, especially now that she is retired, but still as restless as she was when younger.

Radha Pillai gave us another of her well-thought out pieces, this one about her daughter being encouraged to write, but preferring to do it without her prompting or directions.

A new member, Norm Estrin, read a beautiful poem, “Tapestry of Life” which he described as a work in progress, each of us adding a thread: “Some day it’ll be done/Earth will be a shining star/Peace and love will reign.”

He also read, “My Spiritual Quest for Meaning,” telling us of his deciding to move to Leisure World and going through all the things he and his wife had accumulated through the years.

Meetings take place on the first and third Thursday of the month at 11 a.m. in Clubhouse I.

■ Going It Alone Club

Club Elects New Officers

by Elizabeth Brooks-Evans

At its recent annual meeting, the Going It Alone Club (GIAC) elected new officers for the coming Club year. Marian Callaghan will serve as president for another term. She will be joined by Lavern Pychok as vice president, Sharon Boone as secretary, and Georgiana Jones returning as treasurer.

Trips

Also during the meeting, Joe Parker, who has agreed to continue serving as travel coordinator, reported on past trips and shared what ventures to expect in the near future, including a possible journey to Cape Cod in 2018.

Trips from now through the end of this year include Harris Crab House and the Amish Market on Thursday, Sept. 14, and Toby’s Dinner Theatre to see “Dreamgirls” on Sunday, Nov. 5. See the Club Trips section of this publication for trip details.

The Club is also planning a holiday luncheon at Dutch’s Daughter restaurant in Frederick, topped off with a special wine tasting tour on Tuesday, Dec. 5.

Trip signup takes place during Saturday Afternoon Live (SAL) from 1:30-3 p.m. in Clubhouse II when a representative of the program committee is available to receive payments and answer questions.

The GIAC newsletter, which has more trip information, is also available at that time. For questions about trips, call Joe Parker at (301-598-3457) or Sylvia Pachenker at (301-598-5325).

Armchair Travel

London is the L.A., D.C., and N.Y.C. of Britain — a living, breathing, thriving organism, a coral reef of humanity. Blow through the city on a double-decker bus, and take a “pinch-me-I’m-in-London” walk through the West End.

Ogle the crown jewels at the Tower of London, hear the chimes of Big Ben, see the Houses of Parliament in action, and possibly enjoy an intimate visit with the Queen if she’s at home.

These special tours with expert travel guide Rick Steves are yours to explore during armchair travel on Saturday, July 22, 29, and Aug. 5 at 1:30 p.m. during SAL in Clubhouse II.

Membership

If you missed the opportunity to renew your membership during the annual meeting, you can still do so during SAL from 1:30-3 p.m. The fee is only \$7 per year and the income from dues is used to pay club expenses and enhance activities. For more information about membership, contact Marion Callaghan, president, at (301-598-6779).

Your Aging in Place Specialists

We Do It All.

<input type="checkbox"/> Grab Bars	<input type="checkbox"/> Bathroom Remodels
<input type="checkbox"/> Railings	<input type="checkbox"/> Non-Slip Floor Surfaces
<input type="checkbox"/> Overall Accessibility	<input type="checkbox"/> Access Ramps
<input type="checkbox"/> Lighting	<input type="checkbox"/> Light Switches
<input type="checkbox"/> Bath to Shower Conversions	<input type="checkbox"/> Raised Appliances

▪ **Reliable:** Scheduled appointment times. ▪ **Guaranteed:** 1 year warranty on labor.
▪ **Professional:** Quality work done by experienced craftsmen.

Get Your To-Do List Done Today!

410-549-9696

handymanmatters.com/Columbia

SENIOR DISCOUNT
10% OFF

Projects over \$100. Labor only. Not valid with other offers. Expires 12/31/2017.

Locally owned and independently operated. © 2017 Handyman Matters Inc. All Rights Reserved. MHIC #89094

Working with Spaces

by Brent Malcolm

Do you normally have a number of open applications on your computer? The desktop can become cluttered with many open applications, but users can create additional desktops, called Spaces, to organize the application's windows.

When you work in a Space, you see only the application windows that are assigned to that Space. For example, six Spaces may each contain a specific app: (1) Mail; (2) Safari; (3) Calendar; (4) Finder; (5) iTunes; (6) Other.

In addition, certain apps like Excel and Pages are set to display in any Space. When in a particular Space, only the assigned applications' windows

are visible, thus limiting the clutter and confusion.

To set up these unique Desktops, launch Mission Control either by a two-finger swipe up on the Magic Mouse, a four-finger swipe up on the Magic Trackpad, a tap on the F3 key, or search for the Mission Control icon in the Dock.

A half-inch margin appears at the top of the screen, with "Desktop" labeled in the center and a plus sign at the right edge. (If your Dock is on the right side, the plus sign is on the left).

Move the cursor toward the top of the screen and the margin grows to over an inch. This is called the Spaces Bar. Touch the plus sign and a second Space appears with the label "Desktop 2." Users can create up to 16 Spaces.

To assign applications to Spaces, right click an applica-

tion's icon in the Dock. From the shortcut menu that appears, choose Options, then one of the following: (1) "All Desktops"; the app opens in every space. (2) "This Desktop"; the app opens only in the current space. (3) "None"; the app opens in any space in use. If you assign an application to a specific Space, the app will always open in that Space.

To delete a Space, enter Mission Control, and then move the pointer to the top edge of the screen to show the Spaces Bar. Place the pointer over the space you want to delete, and then click the little X button that appears. If the space contains open application windows, they are moved to another Space.

Users move between Spaces in a number of ways. (1) On a trackpad, swipe left or right with three or four fingers. On a Magic Mouse, swipe with two fingers. (2) Press the Control key and the Right or Left arrow key. (3) Enter Mission Control, move

the pointer to the top edge of the screen to show the Spaces Bar, and then click a space.

Lastly, users can set up a keystroke combination by going to System Preferences>Keyboard>Shortcuts tab>Mission Control. Then assign a keystroke combination for each of the "Switch to Desktop X."

Users can press Control-#, that is Control-3.



Club News

The next Club meeting is Tuesday, July 25, at 10 a.m. in Clubhouse II. The meeting will include a demonstration of Spaces, along with how to use all the Safari tools and menus.

Learn how to use and manage the items in the sidebar such as the Bookmarks, Reading List and Shared Links. Discover Extensions and how to use the Favorites Bar.

For more information, visit the Club's website at (<http://mac.computerctr.org>).

Today's Tip – iPhone Magnifier

The iPhone Magnifier is a hidden gem that was introduced in iOS 10. Users triple-click the Home button to turn the iPhone into the world's best electronic magnifying glass.

The Magnifier is perfect for dim restaurants, tiny type on packages, and theater programs. You can zoom in, turn on the flashlight and tweak the contrast. To set up Magnifier, open Settings -> General -> Accessibility -> Magnifier and turn it on. The function will be enabled until you turn it off.

IS YOUR ESTATE PLAN COMPLETE?

DOES IT INCLUDE

**LIFETIME
PLANNING**

**ASSET PROTECTION
PLANNING**

**END OF LIFE
PLANNING**

If not, call us now.

**We work with families to ensure you have
a comprehensive plan
that achieves your goals during life
as well as after life.**



www.FelintonLaw.com | 301.610.0055 | info@FelintonLaw.com
Offices in Columbia, Rockville, Florida & DC



Mindy Felinton, JD

An attorney for over 35 years, Mindy has experience in Asset Protection, Medicaid Planning, Estate Planning, Elder Law, Veteran's Benefits, Guardianships, Probate and Pet Trusts.

- Winner of **Avvo Client's Choice Award** for Elder Law four years in a row.
- Co-author of, **"Don't Go Broke in a Nursing Home."**

Low interest rates getting you down? Let's talk.

William P Mason IV, AAMS®
Financial Advisor

17904 Georgia Ave Ste 107
Olney, MD 20832
301-774-8500
www.edwardjones.com

Edward Jones®
MAKING SENSE OF INVESTING

Member SIPC

WILLS, TRUSTS, POWERS OF ATTORNEY, MEDICAL DIRECTIVES AND MEDICAID PLANNING

Leisure World Club Trips

The next deadline for trip submissions is **Monday, July 24**. The trips listed below are sponsored by Leisure World groups and organizations and not by Eyre Leisure World Travel. These trips are **open to all residents**, not only members of the specific club. For information, contact the person listed with each trip. (Do not contact the Eyre Leisure World Travel or E&R Office.) Leisure World clubs and organizations that want to be included in this column must provide a submission to the News by 3 p.m. on the Monday deadline. Due to space limitations, the Leisure World News reserves the right to edit or delete submissions. **Email** your trip information to lwnews@lwmc.com.

Please Note: Member/Non-Member pricing is at the discretion of the individual clubs.

Aug.

23

Delaware Art Museum

Join **NA'AMAT** on a trip to the Delaware Art Museum. Spend the day with a guide see the exhibits until it is time for High Tea served at the museum.

The museum is providing 10 percent off items purchased at the gift shop. Cost of the trip, including High Tea, is \$79.

The bus leaves from Clubhouse II at 10:30 a.m., arriving at approximately 12:30 p.m. and departing the museum at 3:30 p.m., with an estimated return to Leisure World by 5:30 p.m.

Call Adele Taurig at (301-598-3977) for more trip information.

Sept.

14

Harris Crab House and Amish Market

Join the **Going It Alone Club** on a trip to Harris Crab House on Maryland's Eastern Shore for all you can eat steamed crabs, steamed shrimp, barbeque chicken, crab soup, corn-on-the-cob, cole slaw and potato salad, plus pies, beverages and draft beer.

Following the crab feast at Harris', visit the Amish Market for shopping.

The cost is \$72 for members, \$79 for non-members, and includes tax, dining, tour bus and driver gratuities.

The bus departs from Clubhouse II at 10:30 a.m. and returns at approximately 5:30 p.m.

Sign up at Saturday Afternoon Live (SAL) in Clubhouse II from 1:30-3 p.m.

For more information, call Joe Parker at (301-598-3457) or Sylvia Pachenker at (301-598-5325).

Nov.

5

"Dreamgirls" at Toby's Dinner Theater

Join the **Going It Alone Club** when members go to see "Dreamgirls" and have brunch at Toby's Dinner Theater in Columbia, Maryland.

The cost of the trip is \$74 for members, and \$81 for nonmembers, and includes the show, brunch, transportation, tax and gratuity for the meal and the driver.

The bus departs from Clubhouse II at 9:45 a.m. and returns at approximately 4:30 p.m.

Sign up at Saturday Afternoon Live (SAL) in Clubhouse II from 1:30-3 p.m. No refund is made after Saturday, Sept. 30, unless a replacement is made.

For more information, call Joe Parker at (301-598-3457) or Sylvia Pachenker at (301-598-5325).

Nov.

6-8

Gaming and Sightseeing in Atlantic City

Join the **Jewish Residents of Leisure World** in a two-night, three-day trip (Monday-Wednesday) to Atlantic City. For only \$169 per person for double occupancy (\$80 more for single occupancy), you get transportation in a modern bus, two nights lodging in the Casino Hotel, a dinner, two hot breakfasts and a \$20 casino bonus.

On your own in this tourist location, you can take in a show and enjoy the famous Boardwalk.

Reservations and full payment are required by Tuesday, Aug. 1.

Contact Sue Sandler at (240-242-3742) for more information and a reservation.

ATTENTION, TRAVELERS!

All Leisure World travelers please note that no group on travel can park more than 12 vehicles overnight/long-term in the Clubhouse II parking lot. Also, parking overnight/long-term is at the owner's own risk.

Summer
Fun!

Special
Discounts for
Community
Residents

Keep the memories!

...but get rid
of the sand, dirt
& allergens from
your carpets!

Father & Son Carpet Cleaning & Repair

301-528-4444 • www.FatherAndSonCompanies.com

Preserve Your
Family Memories!

Photo Scanning
by Kim

Personalized service
at an affordable price
Volume discounts available!

Call Kim at (301) 438-3140

Virtual Computer Services
www.creative-alternative.com



Clubs, Groups & Organizations In Brief

Amateur Radio Club: Calling all hams! All resident amateur radio operators (hams)—or would-be operators—are invited to join our business meeting/lunch the second Tuesday of each month. We meet in the Stein Room in Clubhouse I at 1 p.m. For more information or to learn about amateur radio, call Bryan West at (301-598-0137).

Book Club Network: The network is a collection of book discussion groups of eight to 12 members each, providing a forum for residents to get together with other avid readers to read and discuss their favorite books. Members meet monthly to talk about a specific work chosen by their club. For further information, contact Verna Denny at (301-598-1418) or (verhd@msn.com).

Centering Prayer: Join our group of centering prayer practitioners on Wednesdays at 3:30 p.m. (3588 Gleneagles Dr.). Centering prayer is a method of silent meditation, where you rest in God, without saying anything, just happy to be in God's presence. Our intention is to be aware of the presence of God and to welcome the action of God within us. Beginners are welcome, as are people of all faith traditions. For more information, call Eileen at (301-438-0422).

Clipper Workshop: Recruiting is underway for members who can help assemble clown hand puppets for Holy Cross Hospital. They are used in the pediatric and emergency rooms. No special skills are needed. Some sewing skills are necessary. We need a sewing machine stitcher. Bring a bag lunch. (We will eat in the lunchroom.) We meet every first and third Monday in Clubhouse II from 10 a.m.-2 p.m., or any portion of the time you can devote to making a child smile. We are looking for donations of cotton fabrics, stuffing, thread and iron-on facing. Contact Joan Mahoney at (240-833-2724) or at Jane Brinser (301-438-2599) for further information.

Computer Learning Center: Located in Clubhouse II just down the hall from the E&R office, the Computer Learning Center is operated by The Leisure World Computer Center Inc., a 501(c)(3) non-profit organization. The all-volunteer staff comprises a board of directors, computer room monitors and other volunteers. The center provides residents free training and assistance in the day-to-day use of computers for online research and other personal needs. The center has Mac and Window systems computers as well as color laser printers for printing and scanning. For more information about the Computer Learning Center, please visit (www.computerctr.org) or contact the E&R office in Clubhouse II at (301-598-1320).

Gem, Lapidary, and Mineral Club: The Lapidary Club meets the second Wednesday of March-July and September-November at 7 p.m. in Clubhouse II. Brief business meetings are followed by programs enthralling to folks with varied and diverse interests, and often provoking the curiosity of even those who might think geology a bore. The club has a fully equipped shop that includes cabochon-making machinery, large and small slab saws, polishers, faceting tools and equipment, a reference library, rough slabs and stones available to shop users. Members exhibit their work each January in Clubhouse II's showcase. The club also sponsors members-only activities, including social events and field trips. For information on the club, contact Chuck Mason at (301-933-3093) or (sugartree2@comcast.net).

Hispanos de Leisure World: We invite all residents who are Hispano-Parlantes to join us in enjoying the activities of this club, including card games and conversations, every Friday at 3 p.m. in Clubhouse I. Once a month, Latin-American and Hispanic movies, with English subtitles, are screened at the same location and same time, 3 p.m. Also, the club organizes a Fiesta de La Amistad on a weekend in the spring and a Christmas dinner in December. And we have organized and presented musical shows about once a year in the Clubhouse

II auditorium as well. If interested, contact Maria Blanco, club president, at (301-847-9066) or Carlota "Loty" Goldenberg at (301-598-6869).

Jewish Discussion: Hello to all Jewish residents of Leisure World. A discussion group meets on the fourth Sunday of every month (except July and August) at 10:30 a.m. in Clubhouse II. Be prepared for lively discussions about Israel and other topics of Jewish interest. Please give us a try; we think you'll like us.

Knitting Corner: Join us the second and fourth Fridays of each month at Inter-Faith Chapel from 10 a.m. to noon. Our next meeting is July 28. Bring your knitting and enjoy the conversations. We have patterns and yarn for your project. Yarn donations gratefully accepted. Call Joan at (240-833-2724) if you have any questions.

LW LGBT Alliance: Our group was formed to give members of the LGBT Community a safe and inviting place to come and meet new friends and to get involved in social activities. Our meetings are the third Saturday of every month at noon in Clubhouse II. We welcome everyone; being gay is not a prerequisite. The LW LGBT Alliance strives to provide events and activities to develop strong relationships through education, interaction and fun within our group and with the entire LW community. For additional information and events, email us at (celticwomen1@gmail.com).

Musical Jammers Club: We gather informally once a month with other amateur musicians, singers and lovers of music to sing, play music and have fun – no dues, no meetings, no agendas, no committees. Our next meetup is Monday, Aug. 14, at 10 a.m. in Clubhouse II. All instruments and voices are welcome. Questions? Call Richard Lederman at (301-598-1132).

The Philadelphians: We meet on the first Sunday of the month at 11 a.m. in Clubhouse II by the fireplace. If you were born, raised, went to school or lived in Philly, you are welcome to join us.

Quilt Group: Come and join our fun group as we work on our individual projects. We now include those interested in all needlework and knitting. We meet the second and fourth Thursdays in the Clubhouse II multipurpose room at 9:30 a.m. If you have any questions, call Clydis Kellough at (301-642-2430). Our next meeting is July 27.

Stitchers Group: Needlepoint, cross-stitch and more. If you enjoy stitching or would like to learn, we meet every first and third Thursday from 10 a.m.-noon in the Clubhouse II multipurpose room. Come and share your finished work and enjoy stitching with us while we learn new skills together. Call Audrey at (301-598-4903).

Short Story Group: The Short Story Group meets at 11 a.m. on the first and third Wednesdays of the month in Clubhouse I. For information, call Beth Leanza (301-598-4569).

Stamp and Coin Club: Are you a philatelist or a numismatic? Join the Stamp and Coin Club. We meet on the first Thursday of each month at 3 p.m. in Clubhouse I. Members discuss their collections, including first day covers, day of issue programs, yearbooks, coins, medals and more. Stamps are shared for "show-and-tell," and we hold an auction of members' stamps. In addition, a gift certificate from Coins of the Realm in Rockville is awarded as a door prize at each meeting. All residents and non-residents are welcome to attend. Annual dues are \$5. If interested, contact Rita Mastrorocco at (301-814-9196).

Wood Shop Users Group: The wood shop is located on the lower level of Clubhouse I; the entrance to the shop is off Gleneagles Drive. It is open Monday through Friday, 9 a.m.-3 p.m. and Saturday 9 a.m.-noon. An experienced monitor is on duty when the shop is open to assist members with their work and provide instructions in the use of shop equipment. Members are often willing to repair and refinish projects for Leisure World residents. For further information, call (301-598-1308).

EYRE Leisure World Travel

Travel & Tour Department • (301) 598-1599 • Monday, Wednesday & Friday 8:30 AM-2:00 PM
Reservations can be made Monday through Friday, 8:30 AM-5 PM by calling 301-854-6600 #4
For more detailed itineraries, please see the Eyre Representative at the Eyre Leisure World Travel Office.

DAY TRIPS

Hollywood Casino

Thu., 7/20, 10:00 am-5:30 pm\$38.00 per person
Try your luck in Charleston West Virginia! \$15 slot play offer from Casino.

Annapolis Time & Tide Trio Cruise

Thu., 7/27, 8:45 am-4:30 pm\$105.00 per person
Enjoy a 3-hour cruise to Thomas Pt. Lighthouse, Bay Bridge and Severn River. Box lunch included.

Mansions Along the Delaware

Fri., 8/11, 6:15 am-8:45 pm\$129.00 per person
Embark on an elegant bus tour with a guide who will accompany you on your journey as you tour three centuries of gracious living! Lunch included.

"Time" for Ice Cream

Sat., 8/12, 7:15 am-7:30 pm\$109.00 per person
Visit a Clock & Watch Museum. Step on guide for local touring. Lunch at Bully's Pub. Finish the day creating your own flavor of ice cream at Turkey Hill.

Gadsby's Tavern Old Town Alexandria

Tue., 8/15, 8:30 am-4:45 pm\$92.00 per person
Since 1770 Gadsby's has been a Landmark. Guided tour of the museum and lunch in the Tavern with time to explore Old Town.

Crab Feast on the Choptank River Queen

Thu., 8/24, 8:45 am-7:15 pm\$109.00 per person
Enjoy an all-you-care-to-eat crab feast while cruising on the Choptank River aboard an authentic paddle wheel boat. On your 3-hour cruise enjoy steamed crabs, Maryland crab soup, fried chicken, clam strips, corn on the cob, coleslaw and dessert.

US Tennis Open

Friday, 9/1, 5:30 am-11:55 pm\$155.00 per person
Ground pass to all stadiums (except the Arthur Ashe)

Taste of Annapolis

Thu., 9/7, 7:45 am-5:45 pm\$125.00 per person
Come taste Annapolis with 3 classic food stops, historic venues, and a guide with you all day.

Museum Loop

Tues., 9/12, 8:40 am-3:00 p.m.\$35.00 per person
Choose which museum you want to visit for the day! Your choices are Holocaust Memorial Museum, National Museum of Natural History or the National Gallery of Art. Trip includes transportation only.

Harriet Tubman Underground Railroad

Fri., 9/15 8:15 am-7:30 pm\$115.00 per person
The Harriet Tubman Museum is full of exhibits that reveal the life and work of Harriet Tubman. Enjoy a plated lunch at Suicide Bridge Restaurant before visiting Linchester Mill. Guided tour and so much more!

Sunfest in Ocean City, MD

Sat., 9/23, 7:45 am-9:00 pm\$60.00 per person
This event features arts & crafts vendors, popular entertainment and a variety of delicious food. Transportation only.

"Creating Camelot" at the Newseum in Washington, DC



Tues., 10/3, 9:05 am-4:35 pm\$63.00 per person
See the exhibit of photographs of the Kennedys that helped create the legend of known as "Camelot." After the exhibit, spend your time perusing the other famous objects and exhibits. Lunch is on-own

"Buddy Holly" at the Dutch Apple Theatre

Wed., 10/11, 9:00 am-6:15 pm\$110.00 per person
See the man, hear the music and relive the life of a legend! Buffet lunch and show included in the trip.

Western Scenic Maryland Railroad Cumberland Maryland

Sat., 10/14, 8:00 am-6:45 pm\$129.00 per person
It's time for some leaf peeping! This round trip excursion from Cumberland is an exciting mix of mountain top scenery and rich transportation history. Lunch included on board.

The Price is Right Live

at the American Music Theatre

Sun., 10/15, 9:45 am-8:00 pm\$134.00 per person
The Price Is Right Live is a live show based off of the popular TV show by the same name. Contestants guess the price of various items and win prizes based on how close they're estimate are to the actual price. "Come On Down" to win cash and more! Lunch is included at Miller's Smorgasbord.

Skyline Drive

Fri., 10/20, 8:00 am-4:35 pm\$98.00 per person
Take in the Fall Foliage -picture opt available. Stop at Dickey Ridge Visitor Center before lunch at Skyland Resort. Trip includes: transportation and lunch.

Ghost & Gourds

Mon., 10/30, 8:30 am-5:00 pm\$89.00 per person
Stop at McCutcheon's Apple Store. On the Ghost Tour ride, see and hear about Frederick's haunting past, enjoy lunch at the historic Carriage House and visit Catoctin Mountain Orchard for shopping.

George Washington's Mount Vernon

Fri., Nov. 3, 8:45 am-6:00 pm\$105.00 per person
Tour the mansion and explore the grounds including the Museum and Education Center. Lunch at the Mount Vernon Inn.

Spotlight on...

Radio City Christmas Spectacular New York City



Fri., 11/18 or Sat., 12/1
7:30 am-11:15pm\$179.00 per person
Orchestra Seats - 2 pm show.

MULTI-DAY TRIPS

Colorado's Historic Trains
Sept. 15-23 (fly-drive)

The Legendary Blue Danube
River Cruise
Sept. 20-11 days (fly-drive)

Ocean City Getaway
Oct. 10-13 (motorcoach)

Best of New England
Oct. 13-17 (motorcoach)

Wright Experience, PA
Oct. 24-26 (motorcoach)

Williamsburg "Grand
Illumination"
Dec. 2-4 (motorcoach)

Greenbrier, WV
Dec. 3-5 (motorcoach)

Biltmore Estate & Asheville, NC
Dec. 11-14 (motorcoach)

CRUISES

Grandeur of the Seas
Baltimore, MD; South
Caribbean
Jan. 20-Feb. 1, 2018

Caribbean Princess
Panama Canal Cruise out of
Ft. Lauderdale
March 8-18, 2018

We can book any cruise line anywhere you want to cruise.

(All Trips depart from Clubhouse II)

Some trips require a certain amount of walking. The shoe symbol  provides an indication of how much walking may be involved.

Key:



Easy Walking



More Walking



A Lot of Walking

Eyre at Leisure World Travel Office, located in Clubhouse I, is a department of Eyre Bus, Tour & Travel. We offer a full service travel agency that specializes in airline reservations, cruises, group tours, vacation packages, hotel accommodations and auto rental. We have been providing "Excellence in Travel for 60 Years".

INCLEMENT WEATHER POLICY: Please call 301-598-1599 after 7 am on the day of a trip to find out if we have cancelled, postponed or are going. If a trip is cancelled, you will also receive a phone call from us once the office is open.

SPORTS, GAMES & Scoreboards

■ Pickleball Club

Never Too Old to Learn Pickleball



The Pickleball Club celebrates July 4. Photo by Fred Shapiro

by Susan Crawford

On July 6, the Pickleball Club held its first beginner's pickleball clinic of the 2017 summer season. Twelve enthusiastic residents attended the clinic taught by Club member Bill Bullough.

Club president Donna Leonard and Club member Cathy Madden assisted Bullough. Participants learned and practiced the forehand and backhand shots.

They also learned serving, court positioning when serving the ball and receiving the serve, scoring, and game rules. The participants were then arranged in groups of four, and pickleball games began.

During each scheduled

outdoor Pickleball Club playing time, one of the four courts is reserved for beginner play, so that new players can play together until they feel they can comfortably integrate into games with experienced players.

Coaching by an experienced player is available during the beginner games to reinforce the skills taught at the clinic.

For those who were unable to participate in the first clinic, but still want to learn to play pickleball, a second beginner's clinic will be held within the next several weeks. To sign up, contact Donna Leonard at (Donna19381@verizon.net) or (301-598-4181).

For the second year in a row, the Pickleball Club participated in Leisure World's 4th of July parade and had a great time.



Photo by Leisure World News

■ Tennis Club

Meeting, Picnic and Tennis Drills

by Alfonso Holston

The Club's next meeting is Wednesday, Aug. 2, at 7 p.m. in Clubhouse II. All are welcome.

The Club's annual picnic is on Friday, Aug. 4, from 12:30-2:30 p.m. in Olney Park. RSVP by Thursday, July 27 to Mitzi Estrin at (240-994-9998).

Another tennis drill is planned for Sunday, Aug. 13, with a professional tennis instructor at Leisure World's courts. The session is \$10 per person and is limited to eight players. If interested, contact Natalie Brodsky at (301-598-2813).

Professional tennis returns

to the area with the Citi Open, which runs from Saturday, July 29, to Sunday, Aug. 6, at Rock Creek Park Tennis Center in Washington, D.C. Tickets and schedule information are available at (www.citiopentennis.com).

After watching the pros play, come play with the Club. Round robin play meets on Tuesdays at 9:30 a.m. and Fridays at 9 a.m. Advance play is on Sundays, Wednesdays and Thursdays at 9:30 a.m.

The Club joined Leisure World's 4th of July parade and held up the rear of the parade route while handing out tennis balls to spectators. Club members enjoyed this tradition.

■ Golf Club

Summer Golf Results

Compiled by Rita Molyneaux

June 30, 2017

Twilight

1. Doug Brasse, Joe Boland, Brenda Curtis-Heiken, Abigail Murton, 32
2. Kevin McMahon, Kathy Frensilli
- Doris DeSantis, 32
- *Ties broken by back nine score

July 5, 2017

MISGA w/MCC, Argyle, Compass

Pointe and Beaver Creek

1. Jules Goldstein, Semoon Chang, 113
2. Joe Crocetta, 114
3. Doug Brasse, Joe Bolandi, 115
4. Kevin McMahon, 116

July 8, 2017

Mixed Club Championship

Overall Champions

1. Doug Allston and Brenda Curtis-Heiken, 52 Net
1. Mark Parker and Pam Mulcahy, 78 Gross*
2. Jack Frensilli and Kathy Frensilli, 62 Net
- *Match of cards Back Nine Match of cards (Back Nine Score) 9

June 27, 2017

9-Hole Ladies

Low Gross and Low Net Tournament

Low Gross

1. Mary Ellen Coffey, 51

Low Net

1. Pat Weingart, 30
- 2 (tie) Doris DeSantis, 34
- 2 (tie) Joan Sumner, 34
- 4 (tie) Marylee Amato, 35
- 4 (tie) Nedra Duffy, 35
- 6 (tie) Janet Danziger, 36
- 6 (tie) Linda Andrews, 36
- 6 (tie) Kazue Waller, 36

June 29, 2017

18-Hole Ladies

ABCD Scramble

1. Mary Ko, Pam Mulcahy, Muriel Peake, 75
2. Susan Kim, Beverly Haas, Judy Moffson, Marylee Amato, 79
3. KC Choi, Pat O'Connor, Janet Danziger, 82
4. Kathy Frensilli, Ronnie Nisbet, Adrienne Tobin, 84

Kangaroos Hop to Chess

by Bernie Ascher

Despite all the real estate in the world, kangaroos live only in Australia and Tasmania. They have been there for many thousands of years.

Unlike many other animals living in the wild, kangaroos are not endangered with extinction (except for the Tasmanian forester kangaroo). The International Union for Conservation in Nature (IUCN), an international organization that monitors endangered species worldwide, considers them “of least concern.”

In a country of about 25 million, kangaroos outnumber the human population. The kangaroo population has been estimated at 50-60 million in some years, according to Australia’s census for commercially harvested kangaroos. At that rate, the country would have twice as many kangaroos as people. Kangaroos also outnumber cattle (28.7 million), but not sheep (about 74 million).

Kangaroos cannot walk. They can only hop; and they can only hop forward, not backward. They also do not have thumbs. They get around using their big, powerful hind legs to hop wherever they want to go.

In fact, kangaroos can travel at speeds of up to 30 miles per hour and can leap 30 feet. They also use their muscular tails to help keep their balance. Fully-grown kangaroos are usually five to six feet tall and weigh 50-120 pounds.

Females are burdened with pockets or pouches, designed to carry their babies for about eight months until they are ready to live on their own. The babies are particularly small at birth – about the size of a cherry. They are born at an immature stage, weighing less than a gram and measuring only about two centimeters long. A baby kangaroo, called a joey, lives in the pouch and feeds on the mother’s milk.

Kangaroos live in groups of 10 or more, known as “mobs.” Females mate with the dominant male, usually the oldest and biggest of the mob. They are herbivores and can survive for long periods without water.

Human consumption of kangaroo meat became legal in South Australia in 1980; it did not become legal throughout all of Australia until 1993. The meat can be prepared as stir fries, leg roasts, steaks, meatballs, kebabs and sausages. The tail can be used for soup. If not overcooked, the meat is tender and has a beefy, slightly sweet and smoky flavor.

Kangatarians (vegetarians who eat only kangaroo meat) regard it as a healthy food – extremely lean, low in saturated fats, full of iron, free-range and organic.

Kangaroos are well suited for kangatarians, who are seriously concerned about the environment and ethics. They produce a

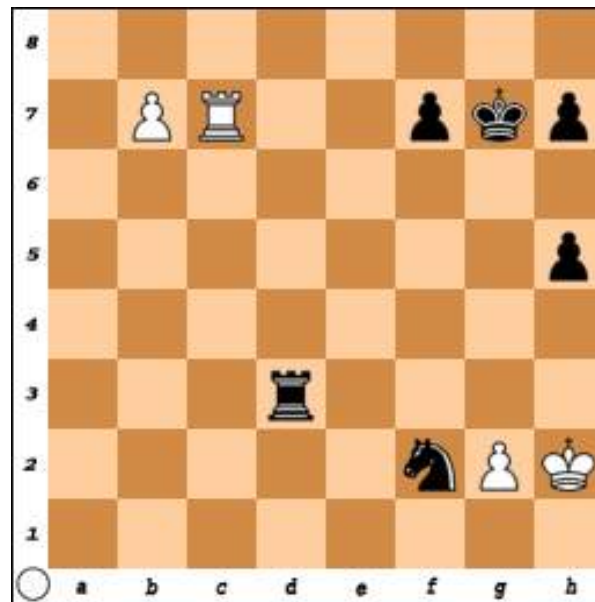
lower level of greenhouse gas emissions than cattle; they require no additional feed, water or land cleared for them; they can roam more freely and are slaughtered more humanely than farm animals.

Kangaroo meat is considered halal, or acceptable meat for Muslim consumption, according to a fatwa issued by Turkey’s Religious Affairs Directorate as reported by the Hurriyet Daily News. However, the meat is not kosher inasmuch as kangaroos do not chew their cud and do not have cloven hooves.

Chess players admire the freedom of movement of kangaroos. As chess players play the game, they seek to gain mobility for their own chess pieces and to create restrictions for their opponents’. In the diagram on this page, White is threatening to promote the Pawn on b7 to a Queen. It is Black’s turn to move. What is Black’s best move?

The answer follows after this reminder that the Chess Club meets Monday, Wednesday and Friday from 1-4 p.m. in Clubhouse II. Membership is free.

Answer: Black moves the Knight to g4,



checking the White King. The King can move only to g1 or h1, whereupon Black moves the Rook to d1. Checkmate!

So, do not wait for kangaroo extinction. Do not wait for kangaroos to hop backwards. Do not wait for kosher kangaroos. Play chess now!

FREDRICK A. ISAACS, M.D., P.C., FACS BOARD CERTIFIED OPHTHALMOLOGIST

Latest Advances in Cataract Surgery including the Restor® & LenSx (Femtosecond)
Treatment of Glaucoma & Macular Degeneration
(Avastin, Lucentis & Eylea Injections)
Complete Exams and Contact Lens Exams

Full Service Optical Shop Glasses, Sunglasses, Contact Lenses

We offer the latest diagnostic equipment for assessment
of retinal disease and glaucoma.

ON PREMISES: Visual Fields, Cirrus HD - OCT,
Fluorescein Angiography, Stereo Disc Photographs,
Corneal Pachymetry and Topography.



**3801 International Drive, Suite 208
Silver Spring, MD 20906
301-598-8500**

LEISURE WORLD PLAZA PROFESSIONAL BUILDING

EMERGENCY APPOINTMENTS AVAILABLE

■ Tuesday & Friday Duplicate Bridge

Compiled by Jerry Miller

For Tuesday games, Flight A includes all players. Flight B includes only ACBL member pairs, each with less than 1,000 master points.

Tuesday, June 20, 2017

North-South

Flight A

1. Diane Keiper – Nadyne Cheary
2. Lorraine Hegel – Robert Kerr
3. Marilyn Rubinstein – Stanley Rosen
4. Saul Penn – Marcia Fletcher

Flight B

1. Marilyn Rubinstein – Stanley Rosen
2. Betti Goodman – Johnnie Walker

East-West

Flight A

1. Barbara Summers – James Summers, Jr.
2. Doug Brasse – Dora Levin
3. Gerald Lerner – Jerry Miller
4. Larry Carswell – Stephen Weiner

Flight B

1. Doug Brasse – Dora Levin
2. Larry Carswell – Stephen Weiner

Friday, June 23, 2017

North-South

1. Lillian Taylor – Leonard Taylor
2. Doris Perschau – Thomas Leahy
3. Joan Quinn – Betti Goodman

East-West

1. Stephan Billstein – Jim Cowie
2. Ted Michos – Carole Ruth Cougnet
3. Mildred Lieder – Angela Riani

Tuesday, June 27, 2017

North-South

Flight A

1. Aaron Navarro – Judith Perrier
2. Angela Riani – Elly Gotkin
3. (tie) Leonard Taylor – Lillian Taylor
3. (tie) Hanna Schepps – Marlys Moholt
5. Diane Keiper – Nadyne Cheary

Flight B

1. Marcia Fletcher – Ephraim Salins
2. Marilyn Udell – Maida Crocicchia

East-West

Flight A

1. Susan Weiss – Bernice Felix
2. Alfred Caponiti – John Ryan
3. Reina Chassy – Paul Chassy
4. Stephan Billstein – Dora Levin
5. Doug Brasse – Merrill Stern

Flight B

1. Stephan Billstein – Dora Levin
2. Doug Brasse – Merrill Stern
3. Sandra Jacobs – Robert Catlett

Friday, June 30, 2017

North-South

1. Diane Keiper – Nadyne Cheary
2. Stan Rosen – Marilyn Rubinstein
3. Bob Kerr – Mel Schloss
4. Aaron Navarro – Judith Perrier

East-West

1. Steve Billstein – Jim Cowie
2. Victor Stewart – Roz Dixon
3. Susan Weiss – Angie Riani
4. Howard Brewer – Mildred Lieder

Friday, July 7, 2017

North-South

1. Diane Keiper – Nadyne Cheary
2. Phyllis Sonen – Marilyn Rubinstein
3. Angie Riani – Mildred Lieder

East-West

1. Howard Brewer – Ephraim Salins
2. Joe Boland – Monroe Elbrand
3. Ted Michos – Carole Cougnet

■ Thursday Afternoon Ladies Bridge

Compiled by Jackie Harrell

June 29, 2017

1. Ruthe Slone, 6530
2. Betti Goodman, 4,740
3. Elaine Doses, 3,900

July 6, 2017

1. Vicky Shaz, 4,340
2. Ruthe Slone, 3,940
3. Ruth Kozlow, 3,850

■ Friday Bridge

Compiled by Betti Goodman

June 23, 2017

1. Mort Faber, 3,230
2. Betti Goodman, 2,620
3. Ray Kurlander, 2,570
4. Barbara Marcus, 2,560

June 30, 2017

1. Syd Puteska, 3,080
2. Bill Cave, 2,470
3. Shirley Rosenhaft, 2,110
4. Gloria Kitzler, 1,900

LEISURE WORLD®

55+ "Resort" Community

18 Hole Golf Course

Resident \$ 800 Annual Dues (No Green Fees)

Non-Resident \$ 900 Annual Dues (No Green Fees)

"Country Club Feel"



2017 To-Date thru July 10

Sold: 14

Under Contract: 1

Listings: 11

Please put my Winning Strategies to work for you and your Friends, Neighbors or Relatives

Your Referrals are greatly Appreciated



Douglas Brasse

Cell: (301) 448-8708

dbrasse@weichert.com

Aspen Hill/ Leisure World Plaza

3816 International Drive

Silver Spring, MD 20906

Office Fax: (301) 598-9325

MAIN OFFICE: (301) 681-0550

Office Fax: (301) 598-9325

MAIN OFFICE: (301) 681-0550

dougbrasse.com



Authorized Leisure World® Specialist

Leisure World® is a registered trademark owned by RRLH, Inc. Doug Brasse is authorized by RRLH, Inc. under license to use the Leisure World® service trademark

Red Hat Audiology

Audiology & Hearing Aid Services

www.redhataudiology.com

If you are missing some of the simple sounds of life, Red Hat Audiology can help.



At Red Hat Audiology we know the impact untreated hearing loss can have on your life. We want to get you back into conversations, and hearing the sounds you love.

FREE 2 WEEK HEARING AID TRIAL

You've talked about hearing aids, you've even thought about them. Call and schedule an appointment now to come in for a Free Hearing Screening, and leave with a pair of hearing aids, programed to your needs and wear them for 2 weeks, FREE!

Gwyneth Newcomb, Au.D., FAAA

Mary Adams, Au.D., FAAA

Doctors of Audiology

3804 International Drive

Silver Spring, MD 20906

301-476-1705

Rolling Rocks Retake Top Spot

by Rita Mastrorocco

The league is based on handicaps with averages for the bowlers ranging from 85 to 180. If you have not bowled in years, come out and join the fun.

The top League standings as of July 7 are:

1. Rolling Rocks
2. Huggers
3. Half and Half

Top scores for the week of June 30 are:

Scratch Game – Rolling Rocks, 688 pins
Scratch Series – Rolling Rocks, 1901 pins
Handicap Game – Rolling Rocks, 929 pins
Handicap Series – Pin Busters, 2673 pins
High Average Men – Pat Leanza, 170 pins
Scratch Game Men – Steve Klopfer, 244 pins

Scratch Series Men – Steve Klopfer, 672 pins
Handicap Game Men – Steve Klopfer, 266 pins
Handicap Series Men – Steve Klopfer, 738 pins
High Average Women – Chris Porter, 178 pins
Scratch Game Women – Chris Porter, 171 pins
Scratch Series Women – Chris Porter, 489 pins
Handicap Game Women – Rita Bienstock, 244 pins
Handicap Series Women – Rita Bienstock, 681 pins

Top scores for the week of July 7 are:

Scratch Game – Huggers, 762 pins

Scratch Series – Huggers, 1985 pins
Handicap Game – Huggers, 1014 pins
Handicap Series – Huggers, 2741 pins
High Average Men – Pat

Leanza, 169 pins

Scratch Game Men – Steve Klopfer, 206 pins
Scratch Series Men – Steve Klopfer, 603 pins

Handicap Game Men – Mark Bandak, 282 pins

Handicap Series Men – Mark Bandak, 729 pins
High Average Women – Chris Porter, 180 pins
Scratch Game Women – Chris Porter, 203 pins
Scratch Series Women – Chris Porter, 585 pins

Handicap Game Women – Bea Morrissey, 270 pins
Handicap Series Women – Julie Thomas, 697 pins

You do not need to be a good bowler to join. Come and join us for fellowship, fun and easy exercise. There is no long-term commitment.

The league bowls every Friday morning with practice starting at 9:50 a.m. at Bowl America, 1101 Clopper Rd. in Gaithersburg. The cost for the three games of bowling, the use of bowling shoes and balls, and unlimited cups of coffee is only \$10. If you are interested, please call Rita at (301-814-9196).



Leisure World News
OF MARYLAND

Sports, Games & Scoreboards In Brief

Bid Whist: Do you know what Sport the Kiddy, Boston Time, Rise and Fly all mean? If you like the game Bid Whist and would like to play one day per week, contact Jessie at (314-374-4501).

Bridge:

• **Tuesday and Friday Duplicate Bridge** games are at 7 p.m. in Clubhouse I. New players with partners are welcome. Have fun. Win masterpoints. Questions? Call Nadyne at (301-598-5677).

• The **Wednesday Night Chicago Bridge Group** is looking for new members. The group meets every Wednesday in Clubhouse I. Play begins promptly at 6:45 p.m. Bring a partner and be ready for a few hours of friendly games. Questions? Call Doug at (301-448-8708).

• **Men's Bridge** seeks players. We meet Mondays and Thursdays at 12:30 p.m. in Clubhouse II. No partner needed. Please, no beginners.

• **Thursday Ladies Bridge** welcomes more card players. If interested, call Jackie Harrell at (301-598-4341).

Cribbage: We meet for 150 minutes of competitive fellowship Thursdays at 9:30 a.m. in Clubhouse II. We have cards and cribbage boards, and would be pleased to teach you the game. It is a mixture of rummy and pinochle and is pure fun. (We do not even keep score.) For more information, call George at (301-598-9747) or Bill at (301-598-7270). We look forward to seeing you.

Mah Jongg: Want to learn how to play Mah Jongg? Call (301-598-3438).

Pinochle Players: If you enjoy pinochle, join us at Clubhouse II on Monday evenings, 6:30-8:30 p.m. Call us at (301-775-7238) or (301-598-7064).

Poker:

• A few poker game openings are available at the Greens, Thursdays 7-10 p.m. No prior experience necessary. If interested, call Marcel at (240-486-6205).

• **Men's Poker** is seeking new members. Play is daily, beginning around 9 a.m. in the Game Room in Clubhouse II.

• **Poker players wanted** for all variations of poker, with or without wild cards. Come by Clubhouse II Tuesdays and Thursdays at 7:15 p.m. and play until 10 p.m. Spend an enjoyable night with a bunch of good people. Call Andy at (240-558-4787).

Jigsaw Puzzle: There is a jigsaw puzzle table in the Clubhouse II lobby. Feel free, at your leisure, to work on it.

Scrabble: Please join us at Clubhouse II on Tuesdays at 12:30 p.m. for a game of Scrabble. Boards are available. Call Arlyne at (301-438-7442) if you are interested in playing.

Duckpin Bowling: Join us for the Duckpin Mixed Bowling League Mondays at 12:30 p.m. at White Oak Bowling Lanes (11207 New Hampshire Ave., Silver Spring). We need bowlers of all skill levels and will welcome you into our enthusiastic group. We carpool regularly, so non-drivers need not stay away. Call Grace White at (301-438-7892) or Flora Wolf at (301-598-5807) to join as a substitute or regular bowler.

Indoor Pool Volleyball: Experienced players are welcome to join a competitive game in the social pool at Clubhouse II on Mondays and Thursdays at 6 p.m. Basic volleyball skills are required. For beginners, social games are Wednesdays, Fridays and Saturdays at 3 p.m. If you don't have a yearly indoor pool pass, a \$3 ticket good for one pool session may be purchased at the Clubhouse II E&R office. Email Laurie Burdick at (lgburdick@aol.com) with questions.

Mind-Body Exercise Club: Members meet every Thursday afternoon from 2-3 p.m. in the Clubhouse II Activity Room to study and practice mind-body exercises under a leader. Interested Leisure World residents can join the club by paying a \$5 per person initiation fee. If you have any questions, call Judy Menkes, club president, at (301-847-6943).

CLASSES & Seminars

Sign-up will be taken for newly advertised classes beginning on the Tuesday after the date of the edition of Leisure World News in which it appears. All sign ups begin at 8:30 a.m. in either Clubhouse I or Clubhouse II as noted in the class description. Residents can register for themselves and two other residents. **Please bring your Leisure World ID.**

If required enrollment is not met five days prior to the start date, the class will be cancelled.

*****Please note fees for non-residents: add \$10 for 1-6 session classes and \$20 for classes of 7 or more sessions.*****

Payment can be made by check or credit card (MasterCard, VISA or Discover); no cash is accepted. Checks *must* be made payable to Leisure World of Maryland Corp. Please sign up in advance of the starting date of the class since instructors need to know how many will participate. **Note: Registration will not be accepted nor refunds issued after the completion of two sessions!**

Leisure World does not discriminate on the basis of race, color, national or ethnic origin in admission policies, education policies or programs.

EXERCISE

NEW – Tai Chi for Essential Tremor (ET): Essential tremor is associated with hand, limb, head and voice tremor, and may also affect balance, mobility and daily function. Tai chi for ET is a program focused, specifically, on reducing complications related to ET by increasing balance, calming the body/reducing stress, and increasing functional mobility.

This class is intended for individuals with ET and their spouses or caretakers. It is led by T. Sean Vasaitis, PhD, MS EHS. Vasaitis has been studying tai chi for nearly 20 years. He has taught tai chi at the UM Center for Integrative Medicine since 2005, and directs the Alternative Medicine course at the University of Maryland Eastern Shore School of Pharmacy. He holds degrees in both Pharmacology and Exercise and Health Studies, and focuses on the integration of traditional and modern approaches to health care. His research interests include the mechanisms by which exercise, mind-body medicine, and complementary therapeutics affect mobility and metabolic function.

Class meets Fridays and Sundays, Aug. 4-Nov. 13 (no class Sept. 1, 3, 8 or 10), 3-4 p.m. **Fee: \$15. Register at Clubhouse II.**

NEW – Senior Sneakers: Get up and go with a safe, heart-healthy cardio workout that is gentle on the joints. The workout includes easy-to-follow low-impact moves and upper-body strength training. Have fun and move to the music through a variety of exercises designed to increase your cardio fitness level, strength, range of movement, and activities for daily living. Bring your hand-held weights and work at your own pace.

Class meets Mondays (with Shirley), Aug. 7-Sept. 18 (no class Sept. 4), and Thursdays (with Sue), Aug. 10-Sept. 14, 9-9:45 a.m. You can take the class on Mondays or Thursdays, or sign up for both days. **Fee: \$36, one day per week; \$60 for both days. Register at Clubhouse II.**

NEW – Mild Exercise with Shirley: All exercises, seated or standing, are led by instructor Shirley Lloyd.

Class meets Tuesdays, Aug. 8-Sept. 12, and Wednesdays, Aug. 9-Sept. 13, 11-11:45 a.m. You can take the class on Tuesdays or Wednesdays, or sign up for both days. **Fee: \$36, one day per week; \$60 for both days. Register at Clubhouse II.**

NEW – Zumba Gold with Denny – Mondays or Fridays: This program was designed for the older active

adult, a person who has not been exercising in a long time or individuals who may be limited physically. The biggest difference between Zumba Gold and Zumba Basic is that Zumba Gold is done at a much lower intensity. It is just as much fun, just not as fast! Zumba Gold utilizes the same great Latin styles of music and dance that are used in the Zumba basic program. Class meets Mondays, Aug. 28-Oct. 9 (no class Sept. 4), 10:30 a.m. or Fridays, Sept. 1-Oct. 6, 1 p.m. **Fee: \$40 for one day; \$75 for two days. Register at Clubhouse II.**

NEW – Gentle Yoga – Wednesdays and Saturdays with Marilyn: Yoga is a holistic system that combines movement, posture, breath, and relaxation techniques to improve overall health and well-being physically, mentally, and spiritually. A consistent yoga practice has been shown to increase mobility, strength, and flexibility, and to provide skills to cultivate a peaceful mind in the face of life's stresses and challenges. This class is designed for individuals with some ability to get up and down off the floor and can be adapted according to the need of the practitioner. Beginners and ongoing students are welcome. Bring a yoga mat or blanket to the first class.

Class meets Wednesdays, Aug. 16-Oct. 4, and/or Saturdays, Aug. 19-Oct. 7, 9-10 a.m. **Fee: \$64/1 day, \$120/2 days per week. Register at Clubhouse I.**

NEW – Gentle Yoga – Thursday Evenings: End your day the yoga way. Research has shown that yoga practice can improve digestion and enhance your ability to have a good night's sleep. A consistent yoga practice has been shown to increase mobility, strength, and flexibility, and to provide skills to cultivate a peaceful mind in the face of life's stresses and challenges.

This class, led by Marilyn Dixon, is designed for individuals with some ability to get up and down off the floor and can

be adapted according to the need of the practitioner. Beginners and ongoing students are welcome. Bring a yoga mat or blanket to the first class.

Class meets Thursdays, Aug. 17-Oct. 5, 6-7 p.m. **Fee: \$64. Register at Clubhouse I.**

Line Dance with Wendy: This is an introductory dance course for students who have had little or no dance experience and who want to learn the basics. If you are a beginner/advanced beginner in line dancing, this is the class for you. Join Wendy in a day of fun and dances with a mix of cha-cha, rumba, tango, samba and more.

Class meets Mondays, Aug. 7-Sept. 25, from 2-2:55 p.m. for the Beginner class and from 3-4 p.m. for the Advanced Beginner class. Choose your session based on your experience. **Fee: \$32 per session. Register at Clubhouse II.**

Chair Yoga with Robin, Mondays: Age well. Prevent or diminish the chronic degenerative disease processes that frequently accompany aging. Gentle, yet effective, movements done while sitting in a chair. Increase joint mobility, balance, flexibility, strength, tone, circulation of blood and lymph, and improve breathing. Optional standing balance exercises included. Relaxing and fun! Mindfulness training introduced and basic holistic lifestyle habits discussed.

Instructor Robin M. Hartman, C-IAYT, CHHC, RYT, PTA, is licensed to perform physical therapy in the state of Maryland. She is also a certified holistic health coach, registered yoga teacher, and certified yoga therapist. She will answer questions after class or can be reached at (240-350-8820).

Class meets Mondays, Aug. 7-Oct. 16 (no class Sept. 4 or 25), 2-3 p.m. **Fee: \$100. Register at Clubhouse II.**

WATER EXERCISE

Water Exercise with Nancy: Participants will gain strength, stamina and

tone from this cardio class. Dumbbells are used, although they are not required, and are available for purchase from the instructor.

Class meets Tuesdays, Aug. 8-Sept. 12, and Thursdays, Aug. 10-Sept. 14, 11 a.m.-noon. You can take the class on Tuesdays or Thursdays, or sign up for both days. **Fee: \$36, one day per week; \$60 for both days. Register at Clubhouse II.**

Non-impact Fusion with Beth: This class is held in the round leisure pool (warm water). Dance, yoga poses, and cardio movements are all fused together to give students an awesome, fun class. Participants will improve their posture, balance, flexibility and muscle strength.

Class meets Tuesdays, Aug. 8-Sept. 12, and Thursdays, Aug. 10-Sept. 14, 1-2 p.m. You can take the class on Tuesdays or Thursdays, or sign up for both days. **Fee: \$36, one day per week; \$60 for both days. Register at Clubhouse II.**

Aqua Fit with Shirley: This unique class blends the best of both worlds using water aerobics and yoga. Water aerobics will be done in the lap pool for 30 minutes, focusing on cardio and strength. The class will then move to the social warm water pool and finish up with yoga stretches that will focus on balance and posture.

Class meets Wednesdays, Aug. 9-Sept. 13, 1-2 p.m. **Fee: \$36, 1 day per week; \$60, when taken with one day of another water class. Register at Clubhouse II.**



Mark C. Wimsatt
Painting
Interior/Exterior

Leisure World References
• Affordable Quality
• Excellent References • Free Estimates

WINTER DISCOUNTS!

301-828-6500

Serving Leisure World for over 30 years.

MHIC 10165 Bonded/Insured



Excerpt – Roland B. Gittelsohn

No one has to do it alone.

Someone who cares will always be here to help you with your funeral needs, in a supportive, caring way.



Garden of Remembrance

GAN ZIKARON MEMORIAL PARK

17 YEARS OF CARING SERVICE AND DEDICATED SUPPORT TO THE JEWISH COMMUNITY OF GREATER WASHINGTON

Call our Help Line today at (301) 428-3000, or visit www.gardenofremembrance.org.

Partner Agency of
The Jewish Federation
OF GREATER WASHINGTON



VENTURE INTO *Proven* TERRITORY



Artist rendering.
Projected opening date 2019/2020.

You know the Ingleside name. It stands for financial strength and an impeccable reputation for providing the highest quality lifestyle to Washington-area seniors. Now discover **Gardenside**, Ingleside at King Farm's upcoming addition. Discover an engaging community for those 62 or better who are planning for a vibrant and secure future.

**For more information
call 240-398-3846**



INGLESIDE

AT KING FARM

ENGAGED LIVING

An Ingleside Community

Ingleside at King Farm is a CARF accredited, not-for-profit, continuing care retirement community.

**RESERVATIONS
ARE NOW BEING ACCEPTED!**

***Don't miss your opportunity to take advantage
of priority choice locations!***

701 King Farm Blvd. • Rockville, MD • www.inglesidekingfarm.org



Ingleside at King Farm is expanding with the proposed building of 125 new independent living apartments, 32 private assisted living memory support suites, and a Center for Healthy Living subject to approval by the Maryland Department of Aging.



The Karen Rollings Team



Karen Rollings



Kathy Workman



Sherry Felice

301-924-8200

www.TheKarenRollingsTeam.com

BERKSHIRE HATHAWAY | PenFed Realty
HomeServices

3410 N High St
Olney, MD 20832
301-260-7700



Recent Solds "Around the World"!

Address	Subdivision	Type	Beds	Baths	Asked	Got	Subsidy
36 DUNSINANE CT #59	GEORGIAN COLONIES #5	Townhouse	3	3	\$230,000	\$241,000	\$0
3543 LEISURE WLD BLVD S #22-A	LEISURE WORLD	Attach/Row Hse	2	1.5	\$139,450	\$135,500	\$0
3549 LEISURE WORLD BLVD #22-D	LEISURE WORLD	Townhouse	2	1.5	\$149,000	\$142,000	\$0
3600 PIMLICO PL #11A	LEISURE WORLD	Semi-Detached	3	2	\$329,000	\$320,000	\$0
3374 CHISWICK CT #56-1C	MONTGOMERY MUTUAL COOP	Garden 1-4 Floors	2	1	\$87,000	\$87,000	\$0
3362 GLENEAGLES DR #71-2D	MONTGOMERY MUTUAL COOP	Garden 1-4 Floors	1	1	\$90,000	\$82,500	\$0
3502 FITZHUGH LN #49-B	ROSSMOOR MUTUAL #18	Patio Home	2	2	\$389,000	\$389,000	\$430
14600 EDELMAR DR #113-A	ROSSMOOR MUTUAL #9	Patio Home	3	2	\$299,000	\$295,000	\$0
15115 INTERLACHEN DR #3-314	THE GREENS	Hi-Rise 9+ Floors	3	2	\$299,900	\$299,000	\$0
15100 INTERLACHEN DR #4-304	THE GREENS	Hi-Rise 9+ Floors	2	2	\$264,950	\$263,500	\$0
15100 INTERLACHEN DR #524	THE GREENS	Hi-Rise 9+ Floors	2	2	\$179,000	\$172,000	\$0
15101 INTERLACHEN DR #320	THE GREENS	Hi-Rise 9+ Floors	2	2	\$179,900	\$166,000	\$0
2900 LEISURE WORLD BLVD #304	TURNBERRY COURTS	Mid-Rise 5-8 Floors	2	2	\$259,900	\$242,000	\$0
3200 LEISURE WORLD BLVD #1020	VANTAGE POINT EAST	Hi-Rise 9+ Floors	2	2	\$289,000	\$283,000	\$0
3200 LEISURE WORLD BLVD N #517	VANTGE POINT EAST	Hi-Rise 9+ Floors	2	2	\$420,000	\$410,000	\$400
14809 PENNFIELD CIR #211	VILLA CORTESE	Garden 1-4 Floors	3	2	\$349,999	\$343,000	\$0



SOLD!!!

3005 S. Leisure World Blvd, #318
Our buyers found the perfect unit to rent in Turnberry Courts!



SOLD!!!

3549 Leisure World Blvd, #22-D
Our buyers found the perfect new place to call home! Call us TODAY to see how we can help you!



SOLD!!!

3336 Chiswick Court, #60-B
Our buyers found the perfect new place to call home! Call us TODAY to see how we can help you!



MORTGAGE LOAN OFFICER
Office (240) 403-1972
skeenum@monarchmortgage.com
600 Jefferson Plaza Suite 400
Rockville, MD 20852
NMLS # 459670



Monarch is proud to have been named "5-Star Superior Banking Institution"

Scott Keenum

- ✓ Resident of Leisure World & represented Leisure World at the Maryland Senior Olympics winning a Silver Medal in Pickleball
- ✓ U.S. Army Veteran
- ✓ 30 Years of Experience in the Mortgage Industry



Need New Carpet?

Serving Montgomery County for 30 years! We are the company for all your flooring needs. Carpeting, Hardwood, Laminate, Ceramic, Marble, Commercial, Residential. We do it all! We carry major brand names in carpeting and hard surface flooring.

Trust our experience and knowledge of the industry.

301-924-7331

18167 Village Center Drive
Olney, MD 20832
(in the Olney Village Center)

www.carpetandvacuumexpo.com

**CARPET & VACUUM
EXPO**

**\$100
off installation!
301-924-7331**

only for purchases over \$1000. Offer not valid with any other offers.

CALENDAR *of Events*

Friday, July 21

Clubhouse I

10:00 a.m. Book Club Network
12:15 p.m. Kiwanis Club
1:30 p.m. Any Level Watercolor Class
3:00 p.m. Hispanos de LW: Games
7:00 p.m. Friday Duplicate Bridge

Clubhouse II

10:00 a.m. Chinese Club
1:00 p.m. Ping Pong Club
1:00 p.m. Chess Club
1:00 p.m. Zumba Gold Class
1:00 p.m. Friday Bridge Club
3:00 p.m. Tai Chi for Essential Tremor Class

Saturday, July 22

Clubhouse I

9:00 a.m. Gentle Yoga Class
10:00 a.m. Open Art Studio
7:30 p.m. LW Ballroom Dance Club

Clubhouse II

9:15 a.m. JRLW Religious Service
2:00 p.m. Going It Alone Club: Video

Sunday, July 23

Clubhouse I

Have a Happy Day

Clubhouse II

10:30 a.m. Jewish Discussion Group

Monday, July 24

Clubhouse I

9:15 a.m. Stretch & Tone Class
10:30 a.m. Beginner Stretch & Tone Class
1:00 p.m. Paintbrush & Knife Class
1:30 p.m. Book Club Network
1:30 p.m. LW Chorale
7:00 p.m. Bingo

Clubhouse II

9:00 a.m. Senior Sneakers Class
10:30 a.m. Zumba Gold Class
12:30 p.m. Men’s Bridge Club
1:00 p.m. Chess Club
2:00 p.m. Chair Yoga Class
4:00 p.m. Ba Duan Class

Tuesday, July 25

Clubhouse I

9:30 a.m. Any Medium Art Class
1:00 p.m. Watercolor Techniques Class
2:00 p.m. Book Club Network
5:00 p.m. Lawn Bowls Club
5:00 p.m. Crab Feast
7:00 p.m. Trivia Group
7:00 p.m. Duplicate Bridge

Clubhouse II

9:00 a.m. Senior Sneakers Class
9:30 a.m. Beginner/Advanced Tai Chi Class
10:00 a.m. LW Apple Club
11:00 a.m. Mild Exercise Class
11:00 a.m. Water Exercise Class
12:30 p.m. Scrabble Group
1:00 p.m. Non-impact Fusion Water Class
1:30 p.m. Comedy & Humor Club

Wednesday, 26

Clubhouse I

9:00 a.m. Gentle Yoga Class
10:00 a.m. Basic Photography Class
10:00 a.m. Express Yourself Art Class
1:00 p.m. Diabetes Prevention Class
1:00 p.m. Oils & Acrylics Art Class
2:00 p.m. LW Green Group
6:45 p.m. Chicago Bridge

Clubhouse II

11:00 a.m. Mild Exercise Class
1:00 p.m. Chess Club
1:00 p.m. Ping Pong Club
1:00 p.m. Aqua Fit Class
2:00 p.m. Chair Yoga Class
4:00 p.m. Move It or Lose It Class

Thursday, July 27

Clubhouse I

9:15 a.m. Stretch & Tone Class
10:00 a.m. Painting for Everyone
10:30 a.m. Beginner Stretch & Tone Class
12:30 p.m. Ladies Bridge
1:00 p.m. Ladies Golf Lunch
1:00 p.m. Oils & Acrylics Class
5:00 p.m. Lawn Bowls Club

Clubhouse II

9:00 a.m. Senior Sneakers Class
9:30 a.m. Beginner/Advanced Tai Chi Class
9:30 a.m. Quilters Group
11:00 a.m. Water Exercise Class
12:30 p.m. Men’s Bridge Club
1:00 p.m. Non-impact Fusion Water Class
1:30 p.m. JRLW Movie: “Hummus! The Movie”
2:00 p.m. Mind-Body Exercise Club
6:00 p.m. Tap with Gerry Class

Friday, July 28

Clubhouse I

1:30 p.m. Any Level Watercolor Class
3:00 p.m. Hispanos de LW: Games
6:30 p.m. LW Golf Twilight Dinner
7:00 p.m. Friday Duplicate Bridge

Clubhouse II

10:00 a.m. Chinese Club
1:00 p.m. Ping Pong Club
1:00 p.m. Chess Club
1:00 p.m. Friday Bridge Club
1:00 p.m. Zumba Gold Class

Saturday, July 29

Clubhouse I

9:00 a.m. Gentle Yoga Class
10:00 a.m. Open Art Studio

Clubhouse II

9:15 a.m. JRLW Religious Service
2:00 p.m. Going It Alone: Video

Sunday, July 30

Clubhouse I

Have a Happy Day

Clubhouse II

2:00 p.m. Movie: “Love and Friendship”

Monday, July 31

Clubhouse I

1:00 p.m. Paintbrush & Knife Class
1:30 p.m. LW Chorale
7:00 p.m. Bingo

Clubhouse II

10:30 a.m. Zumba Gold Class
12:30 p.m. Men’s Bridge Club
1:00 p.m. Chess Club
4:00 p.m. Ba Duan Exercise Class

Tuesday, August 1

Clubhouse I

9:00 a.m. Blood Pressure Testing
9:30 a.m. Any Medium Art Class
1:00 p.m. Watercolor Techniques Class
5:00 p.m. Lawn Bowls Club
7:00 p.m. Trivia Group

Dial 301-598-1313
for recorded Daily Events

Meetings of the LWCC Board of Directors, Executive Committee and Advisory Committees

Education and Recreation

Aug. 1, 9:30 a.m., Clubhouse I

Technology

Aug. 1, 10:00 a.m., Sullivan Room

Emergency Preparedness

Aug. 3, 9:30 a.m., Sullivan Room

Tennis

Aug. 2, 1:30 p.m., Sullivan Room

Golf and Greens

Aug. 4, 9:30 a.m., Clubhouse I

LWCC Board of Directors

July 25, 9:30 a.m., Clubhouse I

The meeting airs on July 31, Aug. 2 and 4 at 4 p.m. and 7 p.m. on channel 974.

LWCC Executive Committee

Aug. 14, 9:00 a.m., Sullivan Room

The meeting airs on Aug. 23, 24 and 25 at 4 p.m. and 7 p.m. on channel 974.

Meeting times and locations subject to change.

Leisure World Mutual Meetings

July 24

Montgomery Mutual Board

9:30 a.m., Clubhouse I

Mutual 9 Board

10:00 a.m., Sullivan Room

Mutual 7 Annual

2:00 p.m., Clubhouse I

July 25

Mutual 17A Board

2:00 p.m., Party Room

Mutual 21 Board

2:30 p.m., Community Room 3

July 26

Mutual 20B Board

9:00 a.m., Party Room 3

Mutual 19B Board

1:00 p.m., Sullivan Room

July 27

Mutual 10 Board

9:30 a.m., Sullivan Room

Mutual M6C Board

9:30 a.m., Community Room

Mutual 26 Board

10:30 a.m., Party Room

Mutual 24 Board

1:30 p.m., Community Room

July 28

Mutual 17B Board

10:00 a.m., Party Room

Aug. 1

Mutual 18 Board

1:30 p.m., Sullivan Room

Aug. 2

Mutual 8 Board

9:30 a.m., Sullivan Room

Meeting times and locations subject to change.

7:00 p.m. Duplicate Bridge

Clubhouse II

9:30 a.m. Beginner/Advanced Tai Chi Class

12:30 p.m. Scrabble Group

1:30 p.m. Comedy & Humor Club

Wednesday, August 2

Clubhouse I

9:00 a.m. Gentle Yoga Class
10:00 a.m. Express Yourself Art Class
10:00 a.m. Basic Photography Class
11:00 a.m. Short Story Group
1:00 p.m. Diabetes Prevention Class
1:00 p.m. Oils & Acrylics Class
1:00 p.m. Maryland Interclub Seniors Golf Association Lunch
2:00 p.m. Book Club Network
6:45 p.m. Chicago Bridge

Clubhouse II

1:00 p.m. Chess Club
1:00 p.m. Ping Pong Club
2:00 p.m. Chair Yoga Class
4:00 p.m. Move It or Lose It Class
4:00 p.m. LWAAAC General Meeting

Thursday, August 3

Clubhouse I

10:00 a.m. Painting for Everyone Class
10:30 a.m. Essential Tremor Group
11:00 a.m. Writers Workshop
12:30 p.m. Ladies Bridge
1:00 p.m. Oils & Acrylics Class
3:00 p.m. Stamp Club
5:00 p.m. Lawn Bowls Club

Clubhouse II

9:30 a.m. Beginner/Advanced Tai Chi Class
10:00 a.m. Stitchers Group
12:30 p.m. Men’s Bridge Club
1:00 p.m. Gilbert & Sullivan Society Meeting
2:00 p.m. Mind-Body Exercise Club
7:00 p.m. Tennis Club

Friday, August 4

Clubhouse I

12:15 p.m. Kiwanis Club
1:30 p.m. Any Level Watercolor Class
3:00 p.m. Hispanos de LW: Games
7:00 p.m. Friday Duplicate Bridge

CLUBHOUSE GRILLE

Upcoming Events

CUSTOMER APPRECIATION COCKTAIL PARTY **LATE AUGUST**

Complimentary Hors D'oeuvres
and Discounted Cocktails

OCTOBERFEST **10/20**

Traditional Oktoberfest Buffet, German Beer
Specials and Live Bavarian Music

THANKSGIVING **11/23**

All-You-Can-Eat Thanksgiving Buffet

HOLIDAY DINNER DANCE WITH TONY LUCIANO **12/2**

Dinner and Ballroom Dancing

NEW YEAR'S EVE DINNER **12/31**

Dinner and Ballroom Dancing

CRAB FEAST

AUGUST 29 SEPTEMBER 26
OCTOBER 24

Tickets on sale now!



Early Bird Specials

WEDNESDAY-SATURDAY, 4-6 P.M.

☾ Nightly Specials

4 p.m. - 10 p.m.

• WEDNESDAY •

1/2 PRICE WINE BOTTLES
\$5 Glasses of wine

• THURSDAY •

MARTINI NIGHT

All Martinis on our Special Martini Menu for only \$5

• FRIDAY •

\$2 DRAFT BEER AND \$3 BOTTLED BEER

• SATURDAY •

WHISKEY NIGHT

All Whiskeys on our menu for only \$5



Clubhouse Grille Hours: Wednesday – Saturday: 4 p.m. – 10 p.m. | Brunch, last Sunday of each month: 10 a.m. – 3 p.m.

Stein and Terrace Room Hours: Sunday: 9:30 a.m. – 8 p.m. | Monday – Tuesday: 9 a.m. – 8 p.m. | Wednesday – Saturday: 9 a.m. – 9 p.m.

For Clubhouse Grille Reservations, call 301-598-1330 | For Stein and Terrace Room reservations, call 301-598-1331

CLASSIFIEDS

THE LEISURE WORLD of Maryland NEWS reserves the right to reject or discontinue any advertisement believed inimical to the best interest of Leisure World. We shall accept advertising on the same basis as other reputable publications: that is, we shall not knowingly permit a dishonest advertisement to appear in the Leisure World of Maryland News, but at the same time we will not undertake to guarantee the reliability of our advertisers.

ESTATE SALES

CASH FOR ESTATES; whole apartment contents, whole house contents, storage lockers. Buy out/clean up. atticllc.com Gary – (301-520-0755).

ATTIC TO BASEMENT ESTATE Cleanouts LLC - I provide honest and confidential estate cleanouts with reasonable rates. I assist executors, family members and guardians with a personal touch. I will save you time and money providing fast and efficient service. I work with local auction and hauling companies. Please call or email me to set up an appointment Janet Ray (301-384-3198), (wishalot10@aol.com).

GARAGE SALE on Aug. 5 from 9:30 a.m. to 3 p.m. Variety of items including: glassware, furniture, stereo equipment, kitchen misc., clothing. 15400 Bassett Lane #1-D. Call 301-204-5067 with questions.

ESTATE SALE: All items attractive and in good condition. Sale is by appt. July 25, 26, 27. Bet. 9-1, 3-5. Complete bedroom suite. Solid Mahogany china cabinet, curio cabinet, beautiful side board, antique card table, new sofa, chairs and coffee table. Two bookshelves. (mb@sdfnyc.com). Photos of all items available. Moving date will be scheduled following week for purchases.

FOR SALE

CAMERAS FOR SALE: Nikon 90S, Fusica SB-26, Tamron Lens 73D. Carrying case/miscellaneous. \$125 or Best Offer (cash). Call Tony (301-438-0434).

ETHAN ALLEN GEORGIAN COURT Cherry 5-piece bedroom suite. Suite includes: triple dresser, tri-fold beveled mirror for the dresser, armoire, night stand, and queen rice carved poster bed. Please call Phyllis at (301-806-5928). Best Offer.

CEMETARY PLOTS

PARKLAWN CEMETERY, ROCKVILLE, MD – Two turf topped crypts. Valued at \$10K; only asking \$5K OBO. Includes a 24x12” bronze memorial. Please call (301-461-2133).

BEAUTIFUL CEMETERY PLOT located in Gate of Heaven. Lost are currently selling there for \$1840. I’m asking \$1540 for this lot. If interested, please call Al at (443-604-2342).

AUTO SALES

2004 LEXUS ES330, 4-door. Loaded with sunroof, heated leather seats. One owner, like new. MD inspected. Only 112,000 miles. \$8,900. I will buy your car even if you don’t buy mine. Dealing with Leisure World for 38 years. Licensed and bonded. Cash or cashier’s check for your car, van or truck. Please call Marty Salins at Auto Plaza (301-325-1973).

2000 HONDA CIVIC 4-door, automatic, cold a/c. Timing belt and water pump just done, with receipt. Like new. MD inspected. ONLY 37,400 miles. I will buy your car even if you don’t buy mine. Dealing with Leisure World for 38 years. Licensed and bonded. Cash or cashier’s check for your car, van or truck. Please call Marty Salins at Auto Plaza (301-325-1973).

REAL ESTATE FOR SALE

A WISE CHOICE. Call me. Marilyn Rubinstein of Weichert Realtors. Your expert in this great community. Top 1% Nationwide. #1 Office Producer with over 40 years of experience and hundreds of sales right here. Call me for a free market analysis. Please call and we’ll talk. I make buying or selling an enjoyable and successful experience. Call Marilyn today (301-674-1288).

THINKING OF SELLING your home or that of a relative? Call Sue Heyman of Weichert Realtors, Leisure World Plaza, community resident for over 13 years, Top 1% Nationwide, Senior & Relo Specialist, “Forward@50 Sponsor.” 2016 has been a super year for real estate! Inventory is historically low. Days on the market for our community are less than one month. Prices are going up! Mid-year, I have already had 18 closings, with four additional properties under contract. As sellers, now is the time to take advantage of this fast-paced market. I know all the floor plans and how to price them. Tap into my experience, contractor connections, and marketing to get the best price. My top-quality color brochures, multiple websites, staging techniques, and virtual tours display your home and our community at its best. Call for your free competitive market analysis, (ofc: 301-681-0550), (cell: 301-580-5556).

CAMBRIDGE PATIO HOME, 1225 sq. ft., 3 BDR, 2 baths, marble fireplace, new plush carpeting and floors, luxury custom verticals.

Freshly painted, all done in cream and white. New recessed lighting and fans, all done on dimmers; electric outlets replaced. Screened porch – enjoy fox, deer, chipmunks and more in this rare private setting with your own gardens. This home was my mom’s delight and now can be yours. \$249,900. Shown by appointment. (moonbeampaps@yahoo.com) or (479-997-5679). No agents, please.

REAL ESTATE FOR RENT

ONE BEDROOM in carport building, Mutual 14 on Glade Drive, 2nd floor, enclosed balcony looks out on golf course, all utilities included in \$1,440 per month. One + half baths, excellent condition, carpeted, renovated kitchen, sep DR, full size washer & dryer, wet bar in LR. Please contact agent Andrea Essex at Long & Foster (202-744-6770) or email to (andrea.essex@LNF.com).

APARTMENT TO SHARE

LOOKING FOR A COMPANION to share my beautiful 3-bedroom condo (Greens 2). Private bathroom, bedroom and den. \$1,000 per month (includes water and basic cable). Electric and kitchen to be shared. Please contact Abby at (301-814-0099) to schedule a showing.

HEALTH CARE SERVICES

The Leisure World News will allow only those advertisers who show proof of certification to advertise that they are “certified nursing assistants.”

“A” HOME HEALTH CARE for Senior Citizens – Care you can trust and is affordable. Reliable and qualified aide and nursing staff available. Companionship, personal care, meds, housekeeping, shopping, driving. Full/part-time or live-in. Flat rate for live-in care. Call (240-533-6599).

ELDERLY CARE: Over 10 years experience. Great reference. Available for long days or nights. Can drive. Leisure World resident. (240-461-2188).

ELDERLY CARE Nursing assistant with 15 years experience, day or night, long or short hours, I’m available. Great references. Call (240-478-9971).

PRIMARY CAREGIVER. Licensed CNA with Med Tech and CPR training. 20 years experience. Available 12 hrs/day. MoCo area. Helping clients with activities of daily living. Live-in an option. References available. Trustworthy, honest and caring. Brenda (240-277-0496, call or text).

CNA with a lot of experience. Have own car; will drive you to your

doctor appointments, some errands. Good reference. Call Felicia at (301-828-7748).

CAREGIVER with CNA and years of experience looking for private duty position. Own car; can drive you to appointments, some errands. Good reference. Call Agnes at (240-423-1176).

CNA/GNA CAREGIVER for 16 years. Experienced; great reference. Available day and night. Own car. Grocery shopping, do laundry, etc. Phone (240-578-6388).

CNA, GNA, MEDICINE AIDE, elderly care. Over 10 years experience. Certified CPR, first aid. Reliable, responsible, loving and caring, respectful. Great references. Good driving record. Day or night shift. Call (301-275-8713).

AIDE ASSIST & CARE “Caring for Today for a Brighter Tomorrow.” Licensed CNA, CMT, CPR/first aid, food handlers. Services: companionship, errands, dr. appts, cooking, cleaning and everyday care. No job is too big or too small. Please call for further details and pricing. (240-573-6184) E. Scott

HOME HEALTH AIDE, certified nursing assistant looking for live-in position. Amicable companion; can do light housekeeping, medication, cooking. For more information, call Stars at (301-802-7068).

CNA, CPR, FIRST AID. 5 years experience working in private duty and in an assisted living facility. I enjoy being a caregiver. Call Jeniffer (202-386-0110).

CERTIFIED CNA/GNA in elderly care. Very caring. Drives. References available. Please call Florence (240-277-4053).

CNA –25 years experience. Loving, caring, reliable, looking for full or part-time work. Live-in or -out. Call (240-354-5372) or (301-306-0073).

GENERAL SERVICES

ALTERATIONS - 30 years experience in Leisure World! Men’s & woman’s garments picked up and dropped off at your convenience. Very competitive prices. Call Mimi (301-990-6468).

KITCHEN AND BATHROOM Remodeling – Cabinet and countertop replacement, and bathtub to accessible shower conversions. Please call Joe at JML Remodeling. (301-598-8400). Serving Leisure World since 1988. MHIC# 36674. Thank you.

HOUSE CLEANING – PROUDLY serving the Leisure World community. Weekly, bi-weekly,

monthly selections available. Call CC at (301-253-0544).

R & G CLEANING SERVICES
–Small, family-owned business catering to you and your household needs. Friendly, reliable and trustworthy with many years of experience. Reasonable rates and flexible hours. Licensed and insured. Help with household organization. Free estimate with appointment. Call (301-442-5032).

ALICIA'S CLEANING SERVICES – Good references. Good rate. Once a week or every two weeks. (240-286-3807)

HOUSECLEANING – Sara (240-477-2104) will thoroughly clean your home for a fair price; all supplies included. I am one of Sara's satisfied customers. Call Jackie for references (301-598-3711).

HOUSE CLEANING – 22 years experience. Worked in LW for 10 years. Reliable, honest, great references. I live in Aspen Hill. Call Alice (301-946-5996) or (301-520-0074).

FLOORED AT HOME CARPET sales, installation, repairs and buckle removal. Shop at home; we come to you! Family owned and operated; over 28 years experience. Call (240-626-5931) today for a free in home estimate. We are licensed and insured.

COMPUTER SERVICES – Problems with your PC or Network? Computer Systems Engineer will come to you with help. Home, Business. Call David G. (301-642-4526).

A+ COMPUTER SERVICES. Free in-house diagnostic of your computer, printer, or basic set-ups. A+ certified, virus removal, back up, and retrieve important data, photos, and music. Have served over 400 clients in Leisure World. Also will teach lessons on Microsoft Office and basic computer skills at your home. Alex Nowrouzi, (301-312-2277). I reside in Leisure World.

COMPUTER SERVICES: Has your computer been hacked? Printer or internet problems? Need help with software installation or data backup? Need help with your smartphone or iPads? Call John at (443-604-1421) or Dot at (301-678-3295) for fast, reliable service. We are LW residents! Reasonable rates and all work guaranteed!

COMPUTER LESSONS / SERVICES - Need help with your computer? Training, new computer setup, troubleshooting, installation. Lessons at your residence at your convenience. Learn basic computer, email, surfing the web, digital photos, tablets, smartphones, smart TVs, and more. Patient trainer will sit by your side and teach you in plain English - no technical talk! Shopping assistance for all

electronic & computer items. Senior specialist since 1996. Senior discount. Call David at (301-762-2570). ComputerTutor

CONTINENTAL MOVERS. Local moving services. Free boxes. Local – long distance – hauling – pick-ups and deliveries. \$80 x two men, one hour driving time. (202-438-1489) (301-340-0602) (Cmora53607@msn.com) (www.continentalmovers.net).

SMALL JOBS WELCOME! Picture hanging, moving boxes, carpet stretching, assembling furniture (example: IKEA), adjusting bathroom fixtures, hanging curtain rods, resetting closet doors, general painting. Need something else? Please ask Jesse (301-747-5054).

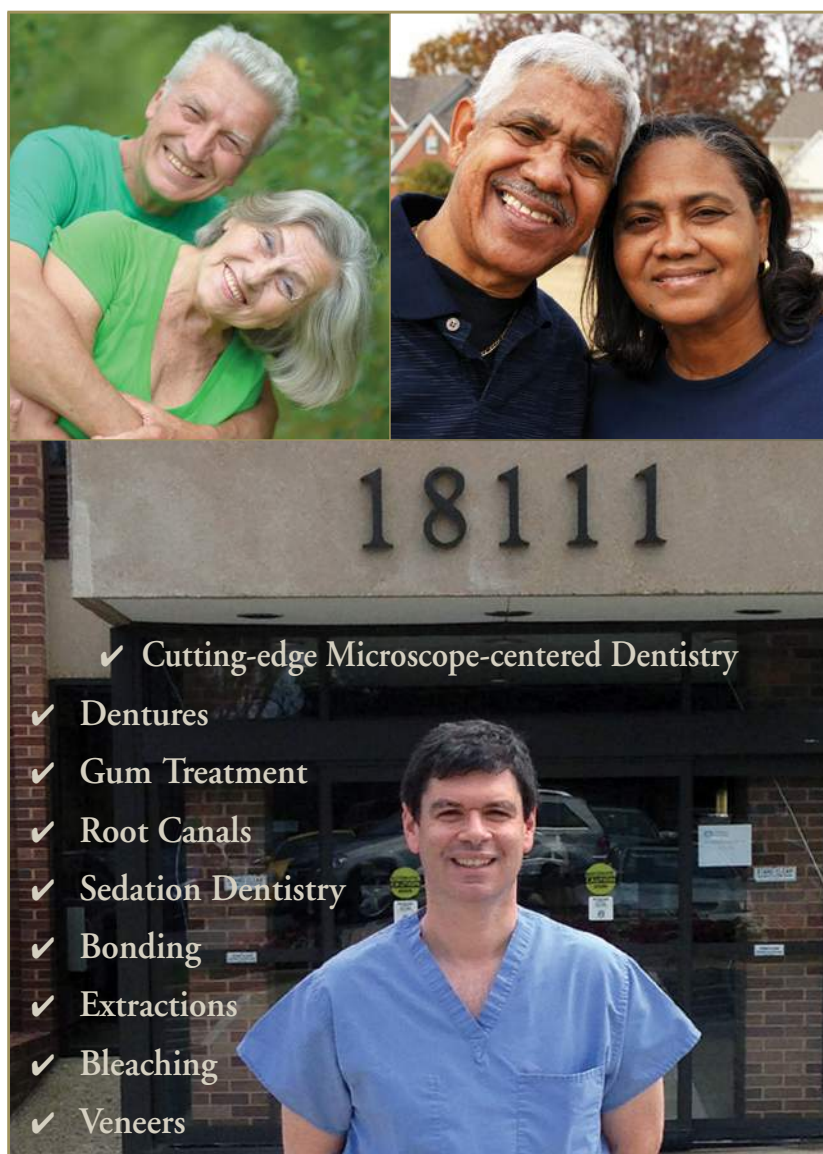
DAHLSTROM SENIOR SUPPORT SERVICES. Assistance with Senior Care and the Care of Senior's Pets. Safe/Reliable door-to-door transportation as needed. General assistance to help maintain independence. Assistance with Pet Care. Dog walking and sitting during short hospital stays, vacations, or as needed. Transportation for grooming/vet appointments. I am a 55 yr. old semi-retired Doctor, Leisure World Resident and dog, cat, bird lover. Bonded, insured, reasonable rates and outstanding Leisure World references. Call Carl (410-499-9362).

ARE YOUR HEADLIGHTS YELLOW, dull and hazy? Have you noticed your headlights aren't as bright as they used to be? Does your car look older than it is? Repair. Don't replace. \$50 per car and we come to you. Replacing headlight assemblies can be very costly and in most cases unnecessary. Call Mr. Headlight, (301-370-6983). LW references available upon request.

YOUR PERFECT DRIVER: Leisure World resident. Lifelong local native. Reliable, competent, friendly. Clean, roomy vehicle. To/from airports, doctors, anywhere, anytime. I'm driving your neighbors...I'm here for you. Let's talk: Steven Saidman (301-933-8899).

CALL & RIDE – Doctors, airport, casino. Will pick up your groceries. Always on time. Over 50 satisfied customers from Leisure World. Larry Kraft (240-743-8287).

TIRED OF POLISHING your silver? Turn it into cash, which does not tarnish. I will come to your home and give you a free evaluation of what I can pay. I buy all gold and silver jewelry, including broken pieces, all sterling silver, gold and silver coins, gold watches, etc. I am licensed with both Maryland and Montgomery County (lic. #2327). If you decide to sell, I can buy your items at that time, but there is no obligation. Call Bob, Gold 4 Good,



18111

- ✓ Cutting-edge Microscope-centered Dentistry
- ✓ Dentures
- ✓ Gum Treatment
- ✓ Root Canals
- ✓ Sedation Dentistry
- ✓ Bonding
- ✓ Extractions
- ✓ Bleaching
- ✓ Veneers

We Cater to Cowards • Same-day Emergencies • Evening Hours
Will File Forms for All PPO Insurance Carriers

Look and feel your best!



**COMPREHENSIVE FAMILY
& COSMETIC DENTISTRY**

\$50 off your first visit

Not valid with third party plans, new patients only.

Located at MedStar Montgomery Medical Center
18111 Prince Philip Dr.
Suite T-17
Olney, MD 20832

T: 301-774-7887 • www.OlneyDental.com

PERSONAL SERVICES

PRESERVE YOUR FAMILY MEMORIES! Don't let your precious photos be forgotten or fade over time. I'll transfer your photos, slides, and mementos to a CD so they can be easily shared with friends and family. Once they're scanned, I can label the photos to identify the people in them, or bring your photos to life in a memorable DVD slideshow. Call Kim at Virtual Computer Services (301-438-3140).

LICENSED BEAUTICIAN. It is my pleasure to give you haircuts, color and perms in your home. Reference available Please call Silvia, (240-277-0890).

DOG WALKING by Leisure World residents. 20 minutes for \$12. Thirteen years experience in vet's office; state certified master wildlife rehabilitator and graduate credits in Animal Science, University of Maryland. Now have A.M. openings, Monday-Friday. References. Call Nancy (301-854-2588).

NOTARY, residing in Leisure World. I offer my service free of charge to Leisure World residents. Can come to your home if needed. (301-379-9694).

HELP WANTED

LOCAL FAMILY looking for additional volunteers for morning/afternoon/evening walking of small, sweet therapy dog. We can use people who can do one walk a week, a few, or many. Also looking for vacation coverage for current volunteers over the summer. Please write to (billchappelle@earthlink.net) or call/text (603-728-8102).

RETAIL FLOORING SALES: FLOORMAX, the Metro area's largest independent flooring covering retailer, is seeking bright, organized and energetic inside and outside sales

people for our flagship stores in Montgomery and Prince Georges county. Candidate must have a minimum of 3 years commissioned sales experience. Flooring experience preferred. A level of PC proficiency is required. Training provided as necessary. Company car and expenses provided for qualified candidate. FT & PT available. Please fax resume to (301-206-2270 Attn: Joseph) or email (joseph@floormax.us.com).

VOLUNTEER OPPORTUNITIES

VOLUNTEER WITH REPRESENTATIVE PAYEE! Representative Payee helps low-income persons with disabilities manage their finances. Each volunteer is matched with a client who needs help with budgeting, paying routine bills and keeping track of financial matters. Interested volunteers should contact the Volunteer Coordinator (301-424-0656, ext. 541) or (volunteer@mhamc.org).

VOLUNTEER AS A HOTLINE CALL COUNSELOR with the Montgomery County Hotline! The Montgomery County Hotline is a 24-hour, 7 day a week confidential service. Counselors provide supportive and confidential listening; crisis prevention and intervention; and give information, referrals and resources. Training Course starts March 11. Contact (volunteer@mhamc.org) or (301-424-0656, ext. 541) if interested.

MUSEUM GUIDES – at the Montgomery County Historical Society. Work two weekday afternoons or one weekend afternoon per month from noon to 4 p.m. Receive on-the-job training on local history and museum interpretation. Also receive special admission to programs and a 20% discount in the Museum Shop. Contact Amada Elliott, Education & Outreach Coordinator, (301-340-6534) or (aelliott@montgomeryhistory.org).

MEALS ON WHEELS is looking for caring and dedicated volunteers to

deliver meals to homebound and disabled individuals in the Leisure World area. Service area includes: Leisure World, Olney, Wheaton, Sandy Spring. Please contact Emily Trotter at (443-573-0925) or email (trotter@mowcm.org).

MEALS ON WHEELS (MOW), which runs out of the Inter-Faith Chapel site, needs more volunteers to deliver meals. If you have or know someone who has one and a half to two hours every other week or one time a month and might be interested in serving in this capacity, please contact (410-730-9476).

THE SENIOR CONNECTION needs volunteers who live in the 20906 zip code area to drive seniors to medical appointments and help with grocery shopping. Schedules are flexible and just 2-3 hours a month can make a difference! Training and liability coverage are provided. Call (301-942-1049) or contact (volunteer@seniorconnectionmc.org) to learn more.

KOSHER MEALS ON WHEELS, sponsored by JSSA, needs volunteers to deliver nutritious meals to homebound seniors. Volunteers will pick meals up at the Hebrew Home in Rockville and deliver them to seniors in Montgomery County. Schedule is flexible. Call Diane Hays-Earp at JSSA, (301-816-2639).

HELP A CHILD! In just 1-2 hours a week you can make a difference in a child's life. Volunteers provide friendship and encouragement, help with reading, offer homework assistance, and engage in crafts and cultural activities at schools near Leisure World. For more information, contact Interages at (301-949-3551) or (interages@AccessJCA.org).

NOTICES

KEEPING SENIORS SAFE - KSS. Morton A. Davis, coordinator and resident of Leisure World is available to discuss theft prevention, driving and shopping habits, frauds,

home safety inspection and property crimes to any organization. The program is part of the Montgomery County Police Department Volunteer Resource Section. Morton can be reached at (301-318-0681) or (mortonadavis@comcast.net).

PRAYER CHANGES THINGS. You are invited to join "Hannah's Prayer Circle" here at LW. For more information, call Evangelist Connie Blake at (301-438-2667).

UPCOMING EVENTS

NATIONAL NIGHT OUT (NNO), Aug. 1, 5-8 p.m. Join us as we come together as a community for fight crime. Live entertainment, information about community programs and crime prevention, activities for children, youth and families. Mid-County Community Recreation Center, 2004 Queensguard Rd, Silver Spring, MD 20906. Free.

WANTED

FAST CASH FOR USED CARS - Big dollars paid for your used car! Over 43 years experience serving Leisure World. Leave message 24 hours. I will come to you. Cash or cashiers check at your request. I can also help with your new car purchase, any make or model! Md. Dealer #U2927. Call Marty Salins (301-325-1973).

WILL BUY MILITARY, WW2, WW1, Civil War, memorabilia items. Uniforms, Weapons, Helmets, Photos, Medals, or any other items associated with US, German, Japanese or other military history. Call Dave (240-464-0958) or email (obal7@aol.com).

CASH FOR RUGS: oriental rugs, any condition. European, Asian, Navajo, etc. atticllc.com Gary (301-520-0755).

HOUSING UNLIMITED, INC is a non-profit organization that provides housing for people in mental health recovery. We accept furniture and housewares that are in good condition to furnish our homes. We do pick up. The Housing Unlimited office is (301-592-9314). Thank you.

CASH FOR JEWELRY: gold, silver, costume, diamonds, coins (including foreign), watches, stamp collections. atticllc.com Gary (301-520-0755).

TURN YOUR STERLING SILVER and old gold jewelry into cash and do something good for yourself. Gold 4 Good, 8241 Georgia Ave., Ste. 100, Silver Spring, MD 20910, buys gold and silver jewelry, including broken pieces, all sterling silver, gold watches and gold and silver coins. I will come to your house and give you a free evaluation of what I can pay. If you decide to sell, I can buy your items at that time, but there is no obligation. Licensed with both Maryland and Montgomery County (lic. #2327). Call Bob (240-938-9694).

Services for Seniors

Activities of Daily Living

- Bathing
- Dressing
- Lifting
- Transferring
- Personal Care & Hygiene


Support Services


- Companionship
- Meal Preparation
- Medication Reminder
- Physical Therapy
- Light Housekeeping
- Transportation to Appointments

What makes ElderCaring different?

- 2 hour minimum for services – most companies require 4 hours as a minimum
- All caregivers are professionally trained nursing assistants
- The owner of ElderCaring personally meets with you to discuss your needs
- All caregivers are fluent in English
- Personal choice in selection of every caregiver
- Licensed, Bonded, Insured
- 24 Hours Service - 7 Days a Week

Would you like to receive a brochure in the mail, or set up an appointment?





Call 301-949-0060

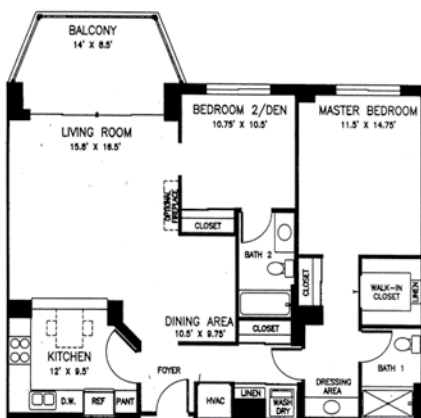
www.eldercaring2.com

"The quality of care you would want for your parents."

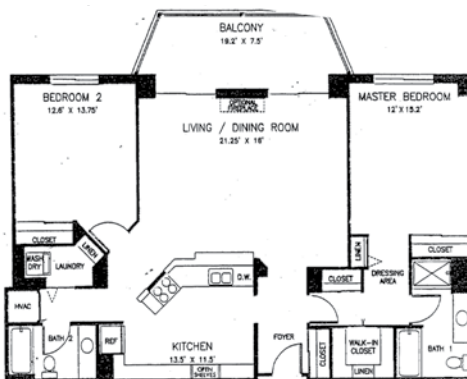


#1 In LISTINGS In Leisure World®

Authorized Leisure World® Specialist



"C" Model - Overlook - \$239,000
2 BR, 2 FB, 1090 sq. ft. Table space kitchen, move-in condition, golf course view.

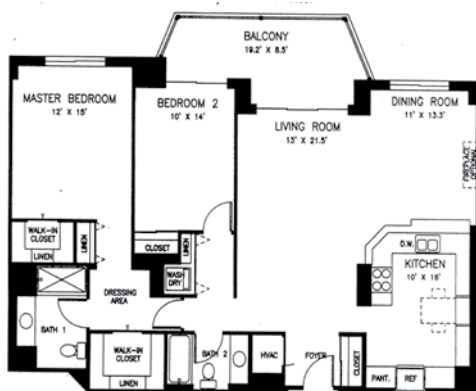


"QQ" Model - Vantage W - \$299,000
2 BR, 2 BA, 1335 sq. ft. Table space kitchen, separate laundry room.



"C" Model - Vantage - \$219,000
2 BR, 2 FB, 1090 sq. ft. Golf course view, close to elevator.

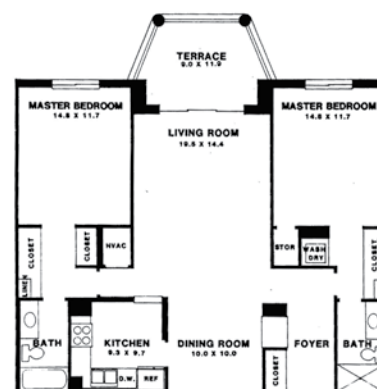
COMING SOON



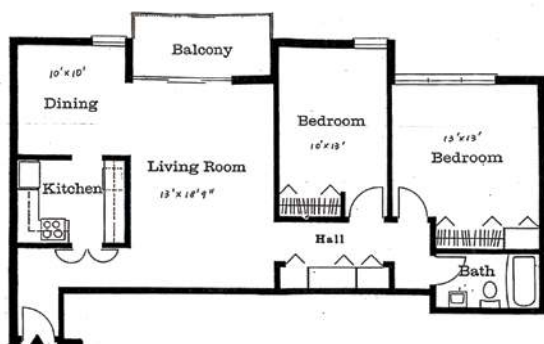
"FF" - Overlook - \$275,000
2 BR, 2 BA, 1320 sq. ft. Updated kitchen, move-in condition.



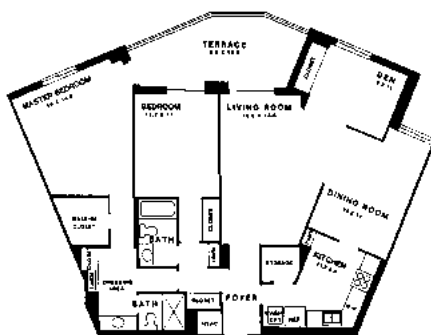
"S" Model - Fairways - TBD
2 BR, 2 BA, den/library, 1460 sq. ft. Garage space included.



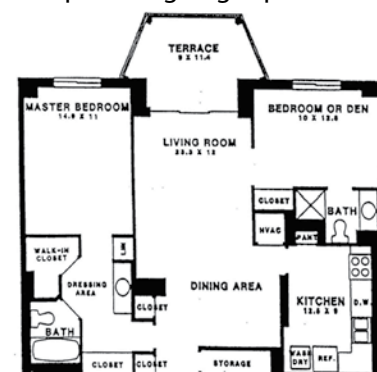
"G" - Greens- \$179,000
2 BR, 2 BA, 1195 sq. ft. Freshly painted, new carpet and garage space included.



Calvert Model - \$85,000
2 BR, 1 BA, 1035 sq. ft. Freshly painted, new carpet, new appliances, balcony enclosure.



"K" Model - Green - TBD
2 BR, 2 FB + den/library, 1480 sq. ft. Garage space included.



"E" - Fairways- \$159,000
2 BR, 2 BA, 980 sq. ft. Freshly painted and new carpet.

Experience for yourself why Stan is #1 in Leisure World®
Call 301-928-3463 and List with Stan Now!



Office: 301-681-0550 Email: stanmoffson38@gmail.com
Web: www.stanmoffson.com





Presents:

AGING GRACEFULLY



Bathing Solutions

Featuring the
LOWEST & SAFEST
walk-in tub available
at ONLY 2"!

Others at 6" + are just
too high!



Get the best for LESS!

Physician recommended for
soothing pain relief from:

- ARTHRITIS
- DIABETES
- NEUROPATHY
- BAD JOINTS – Hips, Knees,
Feet & more!

Would you rather shower??

Reduce tripping hazards
and increase safety with:

- Low or zero entry
- Wide comfort seat
- Hand sprayer
- Grab bars
- Non-skid surfaces & more!

Call for a free
NO OBLIGATION
in-home consultation

410-709-5130

**ASK ABOUT OUR
DISCOUNTS &
FINANCING OPTIONS**

Local, Veteran, & Family Owned – Serving VA, MD & DC since 1990

MHIC 05-381920-02
VA 2705 036361
DC 420216000140
DE 16 60291 25
PA 081295
NC 1541466

**Free Tub
Head-Rest and
Seat Pillows**

Limited time only.

**\$1500 OFF
Shower system
or walk-in tub**

Limited time only.



MD DC

Qualified
Remodeler

Top 500
Remodelers 2016