

Leisure World News

OF MARYLAND

May 1, 2020 • Published Twice a Month • residents.lwmc.com • leisureworldmaryland.com

Due to the dynamic nature of the COVID-19 (coronavirus) pandemic and recommendations of public health authorities, the events, meetings and other activities as well as schedule changes and hours of operation reported in this edition of Leisure World News may have been changed after press time.

Hello, Tupelo



Members of the Garden and Environmental Club preside over the planting of a 10' tall black tupelo tree near the Main Gate on April 28. Photo by Leisure World News

The Club's annual fundraiser, an afternoon tea, was canceled this spring because of the COVID-19 pandemic. Proceeds from the event are used every year to purchase a new tree to plant in Leisure World in recognition of Arbor Day. Despite the event cancellation, "we did not let it stop us," said Club president Vivienne Burke. "[The tree's] autumn colors are supposed to be fantastic – oranges and reds," she added.

Proposed Amendment to Trust Agreements to be Considered



Leisure World Community Corporation (LWCC) executive committee chairperson Paul Eisenhour presides over the committee's April 17 meeting in Clubhouse I, which was closed to resident foot traffic but open to attend by teleconference. Photo by Leisure World News

by Stacy Smith, Leisure World News

The Leisure World Community Corporation (LWCC) executive committee passed a motion at its April 17 meeting that proposes amending the language of the community's Trust Agreements.

A proposed amendment to the Trust Agreements is typically recommended by the LWCC board of directors, but the state-mandated restrictions on meeting sizes due to the COVID-19 pandemic led to the board's March decision to temporarily grant its authority to the LWCC execu-

tive committee.

The proposed amendment targets the resales fee portion of the Trust Agreements. The resales fee is paid by a purchaser of a Leisure World home and deposited into the Trust's Resales Improvement Fund, which is used to expand or renovate existing Trust facilities and to fund reserves.

If approved, the amendment would increase the resales fee from two to three percent (or \$2,000, whichever is greater) of a home's selling price.

In the weeks after the

► to page 6

Strategic Planning Continues Remotely

Committee Requests Residents' Written Responses to Questionnaire

by Leisure World News

The Special Strategic Planning Committee (SSPC) and its consultants from George Mason University are continuing Leisure World's strategic planning process remotely via a series of questions that all residents have until Wednesday, May 13, to respond to by email or postal mail.

The written questionnaire replaces the two in-person community meetings that were scheduled for March but canceled due to the COVID-19 pandemic.



Answers to the questionnaire will help inform a long-term strategic plan for Leisure World that is expected to be developed later this year.

To see the questions and details on how to respond to them, see page 9.

INSIDE

Governance & Information	8	Club Trips Listing.....	36
Closings and Modified Schedules.....	10	Sports, Games & Scoreboards	38
Thoughts & Opinions.....	12	Classes & Seminars	42
Events & Entertainment.....	16	Calendar of Events.....	43
Movie Schedule.....	16	Governance Meeting Schedules.....	43
Health & Fitness	18	Classifieds.....	44
Clubs, Groups & Organizations	20		



What are Leisure World's Trust Agreements, and how are they amended? To learn more, **see page 4.**

Mask Maker, Mask Maker...

Residents Sew to Slow Virus Spread

by Stacy Smith, Leisure World News

Maybe you know someone who's doing it, or maybe you're doing it for someone you know – Either way, nearly everyone has seemingly taken to making or wearing masks nowadays, and not the type donned on Halloween.

Cloth masks, when worn over a person's mouth and nose, can help slow the spread of COVID-19, according to the Centers for Disease Control and Prevention. Mask-wearing in public is now required by law in Maryland.

And as store-bought and medical masks are increasingly harder to come by or are otherwise reserved for medical personnel working on the front lines of the pandemic, Leisure World residents have turned to their own ingenuity and stockpiles of fabric to make masks for one another.

Lois Kutun began sewing a mask here and there for friends back in March. When her son, head athletic trainer for the San Diego Padres baseball team, called her saying the players needed masks, she mailed him about a dozen.

Kutun decided to reach out to some Leisure World club presidents she knew asking if any of their members needed masks. Word spread quickly, and pretty



At left, Lois Kutun sews cloth masks for friends and strangers in her home's sewing room on April 27. Photo by Tom Conger. At right, Helen De Roo cuts fabric for a batch of masks. Photo by David De Roo



soon she was spending four to six hours at a time in her sewing room making masks for anyone who requested them.

"I take small breaks, put my feet up," and then it's back to sewing, Kutun said.

Proceeds from her mask sales (she asks that people pay at least \$5) go to a local Meals on Wheels program. So far, she has raised about \$850 for the organization.

"It's very gratifying knowing I can help people get the meals they need," she said.

When she has more spare time, a rarity these days, she said, Kutun enjoys quilting. But she turned her attention to

sewing once the pandemic hit. And she's not the only one.

Quilter Betsy Starks learned from Sen. Chris Van Hollen's former legislative aide that the Village of Friendship Heights, a community of close-quarters residential buildings in Chevy Chase, Maryland, needed masks, so she found a mask-making tutorial online and sent them a batch. That initial batch has multiplied to approximately 200 masks, many of which have gone to fellow residents in her The Fairways South building.

She's gone through four full drawers of fabric, ran out of elastic at one point, and even began using shoe laces for the

masks' ear loops. Starks' neighbors stepped up to donate their sewing notions to her after her building's property manager sent out a request by email.

And mask-maker Helen De Roo, a lifelong sewer, has put her passion for sewing to altruistic use by making masks for Jubilee Association of Maryland, an organization that provides opportunities and support for adults with intellectual and other developmental disabilities. To date, she's sent more than 90 masks to the organization.

"I had some fabric set aside to make some purses, but I think the masks are a better use of that fabric," she said.

**ASPEN HILL
EXXON**



**Auto Care
14011 Georgia Ave.**

301-871-6777 • aspenhillexxon.com

ATTENTION LEISURE WORLD RESIDENTS:

We are here to help you during the COVID-19 pandemic.

Being the closest gas station and automotive service shop to Leisure World, we recognize how important it is to watch out for each other during these uncertain times. Our job is to serve the community in any way we can, and we are taking all the steps needed to keep our team, and the vehicles we work on, safe and clean.

While it is recommended everyone stay home, we are offering **VEHICLE PICK UP AND DELIVERY AT NO CHARGE WITH AUTO SERVICE.** If you need help or do not feel safe pumping gas, please let us know and we will help you.

We have been serving the community since 1980, and this is our way of helping each other, by duty and by choice. **STAY SAFE, STAY INDOORS.** We will all get through this together.

Maryland State Inspection Station

Leisure World News OF MARYLAND

An official publication of the Leisure World Community Corporation, Leisure World News is published twice monthly by Leisure World Staff in collaboration with the Communications Advisory Committee.

Leisure World News is published for the benefit of Leisure World residents. Its mission is to provide news and information about community governance and other relevant issues, events, and activities, and to provide residents a forum for their opinions and an opportunity to contribute articles of general interest. All matters concerning the Leisure World News will be decided with this mission in mind.

Leisure World Staff

Maureen Freeman,
Director of Communications
Stacy Smith, *Senior Editor*
Kathleen Brooks,
Senior Communications Associate
Kimberly Y. Choi, *Communications Associate*
Cassandra Chisholm, *Communications Project Manager*

Editorial: lwnews@lwmc.com

Advertising: lwnewsads@lwmc.com

301-598-1310

Leisure World News of Maryland reserves the right to reject or discontinue any advertisement believed to be not in the best interest of Leisure World.

We will not knowingly permit a dishonest advertisement to appear nor do we guarantee the reliability of advertisers.

Communications Advisory Committee

Alan J. Goldstein, *Chair*
Bernie Ascher, *Vice Chair*
aclwn@lwmc.com

Resident Contributors

Mary Catherine Bibro,
Rincy Pollack, Arthur N. Popper
and Marilyn Boesch

Channel 974: Uplifting Music Hours for 'Stay at Home' Times

by Leisure World News

During a stay-at-home order amid a pandemic, who couldn't use a little musical inspiration to help make the best of the situation?

An hour-long set of tunes playing on TV channel 974 may offer some comfort. Hum along, sing along, tap your foot, or just get up and dance along to a playlist at 10 a.m. and 6 p.m. daily.

Songs tailored to the "stay at home" theme contain lyrics and refrains that may bring a smile to the faces of those who tune in. A variety of popular songs across the generations – from the 1940s to the 21st century – speak to current challenges in an uplifting way.

Tired of not getting around much anymore? You'll remember that you're never walking through life alone, and that surely we'll meet again,



because things are gonna get easier, and every little thing's gonna be alright.

While the COVID-19 virus has our backs against the wall, if we stand united then tomorrow we'll find better things. After all, we're still standing, and we're stayin' alive!

First and last, however, it can be nice to remember that among the trees of green (and red roses soon enough) Leisure World is a pretty wonderful world to be staying home in.

Call-n-Ride Offers Delivery Services

by Leisure World News

The Montgomery County Department of Transportation has initiated a new program to serve its Call-n-Ride clients: Call-n-Ride Essential Delivery Services.

Now, clients may order their groceries or a take-out meal and have one of Montgomery County's participating taxicab companies pick up and deliver the order to their doorstep during the COVID-19 pandemic emergency.

The cost of the delivery is the taxicab meter rate fare from the grocery, food bank or restaurant to the client's residence. This amount is deducted from the partici-

pant's Call-n-Ride card. The taxicab company will submit the necessary paperwork to the county for reimbursement; the client does not need to do anything else.

For more information, call (301-948-5409) or (800-980-6564), Monday through Friday, 9 a.m. to 4 p.m., or visit (www.montgomerycountymd.gov/DOT-Transit/call-n-ride/essential-delivery-services.html).

What is Call-n-Ride?

Call-n-Ride is a discounted taxi service for Montgomery County residents age 65 and older and adults with disabilities. For an application, call (301-948-5409) or visit (www.montgomerycountymd.gov/DOT-transit/seniors.html).



Want to Receive Emails from Management? Here's How

by Leisure World News

Residents and non-resident owners searching for reliable and accurate information about Leisure World's response to COVID-19 and the virus' impact on the community can receive email updates from management, but they must be signed up as users on the resident website (residents.lwmc.com).

To sign up, click on "Sign Up Today" on the website's welcome page and follow the instructions. Emails from management will be sent to the email address provided during sign-up.

In addition to receiving emails, website users also have access to the community's governing documents, online resources, calendars and news alerts.

Having Trouble?

Having trouble signing up or navigating the website? Email your questions or concerns to (websitesupport@lwmc.com) any time; you will receive a response during the workweek.

Please note that the website is scheduled for maintenance and will be unavailable on Wednesday, May 6, from midnight-2 a.m.



Screenshot by Leisure World News

OUR LADY OF GRACE CHURCH



As we remember that Easter is a season of Hope, we also find ourselves in a season of fear, of doubt, of anxiety produced by an unseen enemy, a virus that is particularly contagious and harmful to those who contract it, especially to folks of our particular demographic. But we are reminded by the Book of Lamentations: "The favors of the Lord are not exhausted, His mercies are not spent; they are renewed every morning, so great is His faithfulness. My portion is the Lord, says my soul; therefore, will I hope in Him." Let us keep one another in prayer as we continue through these difficulties, knowing that this, too, shall pass, knowing that God desires our good above all other things, knowing that God is Love.

Church open daily from 7:30 - 3:30

Adoration M, W, F, 2:00 - 3:00 PM

15661 NORBECK BOULEVARD

SILVER SPRING, MD 20906

301-924-0067

OURLADYOFGRACE@COMCAST.NET



STAY AT HOME ORDER

Marylanders **must** stay at home unless fulfilling an essential function, such as picking up food or medications, seeking urgent medical care, reporting to an essential job, or engaging in outdoor recreation within a safe distance from others. **Knowingly and willfully violating this order is a misdemeanor and may result in imprisonment, a fine, or both.**

FOR HEALTH RESOURCES, VISIT CORONAVIRUS.MARYLAND.GOV



A Matter of Trust Documents

A Look at Leisure World's Trust Agreements and How They Are Amended

by Leisure World News

On April 17 the Leisure World Community Corporation (LWCC) executive committee, acting with authority delegated to it by the LWCC board of directors in March, approved a resolution that began the process of potentially amending Leisure World's Trust Agreements. The Trust Agreements have been amended infrequently since the first Trust Agreement originated in 1966. The amendments' purposes have ranged from being simply corrective — updating language for accuracy, for example — to addressing the changing needs of the community. Here's a closer look at what those Trust Agreements are and how they are amended.

LEISURE WORLD'S GOVERNANCE STRUCTURE

First, it's important to remember how Leisure World is structured. Here are some key terms to know:

- **Leisure World of Maryland:** a private, age-restricted community comprising 5,660 housing units in 29 mutuals.
- **Mutuals:** Leisure World's 29 individual housing associations within the larger Leisure World community. They include 27 condominium associations, one homeowners association (The Regency) and one housing cooperative (Montgomery Mutual). Each mutual operates according to its own bylaws, governance and budget. Each mutual has its own board of directors that is responsible for the governance and operations of the mutual.
- **Leisure World Community Corporation (LWCC):** commonly referred to as the LWCC board of directors. It is a voting body made up of resident representatives from each mutual. It is responsible for the governance and operations of Leisure World. Seven LWCC directors make up the board's executive committee.
- **Leisure World of Maryland Corporation (LWMC):** the LWCC's managing agent and a wholly owned subsidiary of the LWCC.

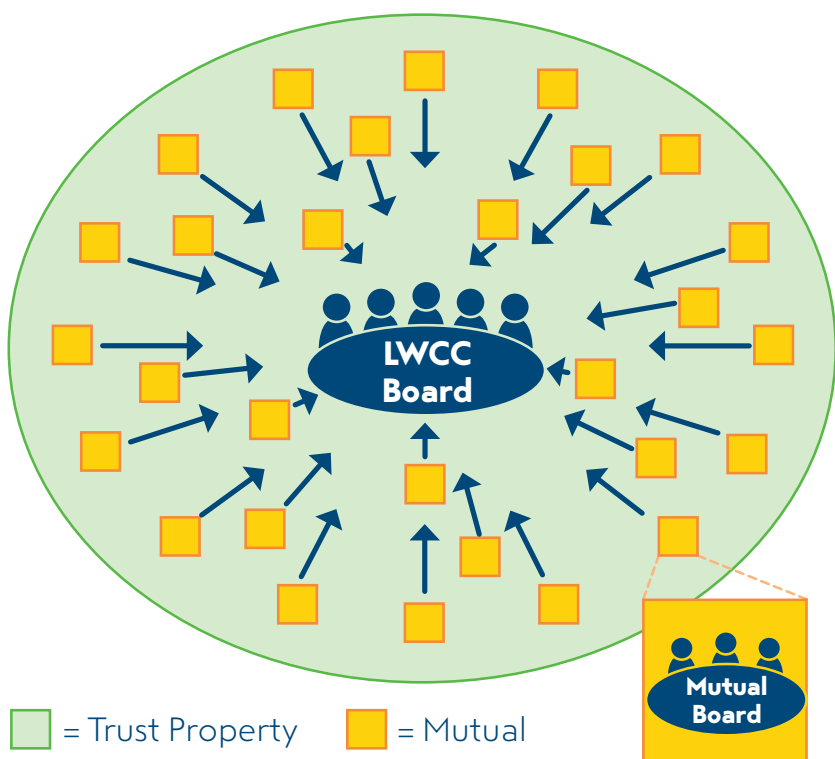
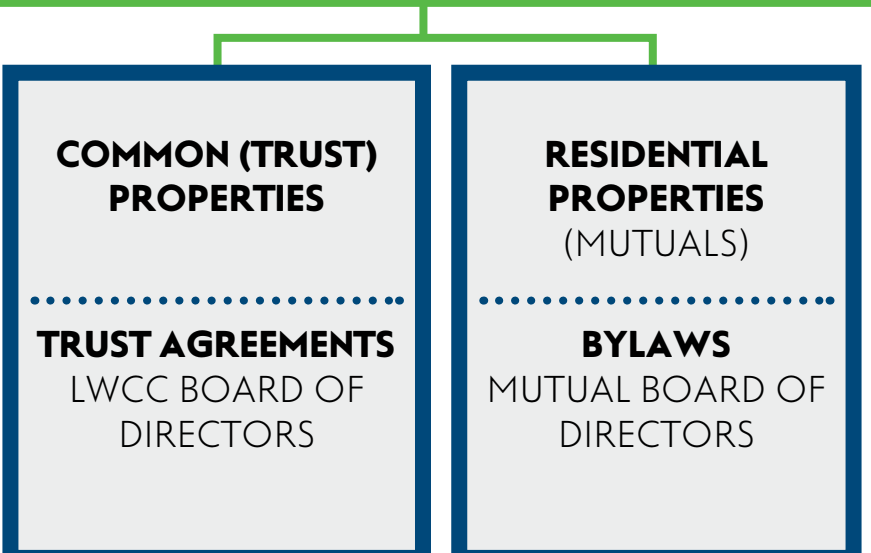
Here are some key terms and definitions regarding the Trust:

- **Leisure World of Maryland Trust:** commonly referred to as "the Trust," it is a legal entity that holds title to the commonly owned property of Leisure World of Maryland and the shared facilities that are not part of any mutual.
- **Trust property:** the common property in Leisure World, i.e. properties that are not part of the mutuals. Examples of Trust common properties include the clubhouses, garden plots area, medical center, golf course, and the streets, parking lots and sidewalks.
- **Trustee:** the body that is given powers to administer the Trust in a manner consistent with the terms of the Trust Agreement; in Leisure World, the LWCC board of directors is the Trustee.
- **Trust beneficiaries:** also known as the Trustors, the Trust beneficiaries are the bodies that benefit from the Trust; in Leisure World, the Mutuals are the Trust beneficiaries.
- **Trust Agreement:** a legal document similar in purpose to a mutual's bylaws, it establishes and sets the guidelines for how the Trust functions and is governed. The LWCC board of directors is responsible for ensuring that the Agreements' dictates are faithfully executed by Leisure World of Maryland Corporation, or management.
- **Trust Amendment:** a change to the wording of the Trust Agreement. The Trust Agreements themselves dictate how an amendment may be approved.

TRUST AND MUTUAL GOVERNANCE

Here's another way of looking at the structure of Leisure World, its mutuals and the governance of both:

LEISURE WORLD OF MARYLAND



THE TRUST

Just as each of the 29 mutuals has its own by-laws that establish the parameters for each mutual's governance, Leisure World of Maryland has Trust Agreements that establish the common community's governance and outline how common properties are to be developed and managed.

AMENDING THE TRUST DOCUMENTS

Amending the Trust Agreements must follow a specific process that is prescribed in the Trust Agreements themselves.

As beneficiaries of the Trust, the mutuals' board of directors have a significant role in that process.

MUTUAL AND TRUST AMENDMENTS — EXAMPLES

Many mutuals have amended their bylaws. Some of those amendments have addressed:

- banning smoking from their building
- setting limitations on allowing owners to rent their units

Leisure World's Trust Agreements have been amended infrequently since 1966. Some of the amendments have included:

- an amendment raising the Transfer Fee (Resales Fee) percentage a homebuyer pays from one to two percent
- an amendment stipulating that a proposed amendment to the Trust Agreements must receive 75 percent of the mutuals' weighted votes in order to become an amendment

AMENDMENT PROCESS

Here's a look at the path an amendment to the Trust Agreements takes to achieve approval:



Step 1: Proposal*

The LWCC board of directors recommends language for a proposed amendment.



Step 2: To the Mutual Boards*

The LWCC board provides the proposed Trust Agreement amendment to the mutuals' boards of directors for their consideration.



Step 3: Education

The mutuals' boards of directors share the proposal with their residents and seek their comments. Notification and education might occur through a variety of means: discussions, flyers or newsletter articles, for example. The LWCC board of directors may also choose to hold community-wide forums.



Step 4: Mutual Vote

Each mutual's board of directors votes on whether to approve the proposed amendment. Their vote is then notarized. Each mutual board's vote is weighted according to the number of residential units it contains.



Step 5: LWCC Recordation

If or when enough weighted votes to approve the amendment have been received from the mutuals, the results of the tabulation are announced at an LWCC board of directors meeting for the purpose of including them in the meeting minutes. The LWCC board does not cast votes; the mutuals' notarized votes are simply memorialized at this stage.



Step 6: County Records

An approved Trust Agreement amendment is recorded in the land records of Montgomery County.

*THE CURRENT AMENDMENT PROPOSAL

Step 1: In the case of the April 17 LWCC resolution on a proposed amendment, the LWCC executive committee was acting with authority delegated by the LWCC board in March.

Step 2: TENTATIVE PROCESS: Due to current conditions (inability to hold an LWCC board meeting) the chairperson of the LWCC board has recommended that the draft amendment be sent to mutual boards. Acting through their LWCC representative, mutuals are being provided the opportunity to comment on or suggest changes to the proposed amendment.

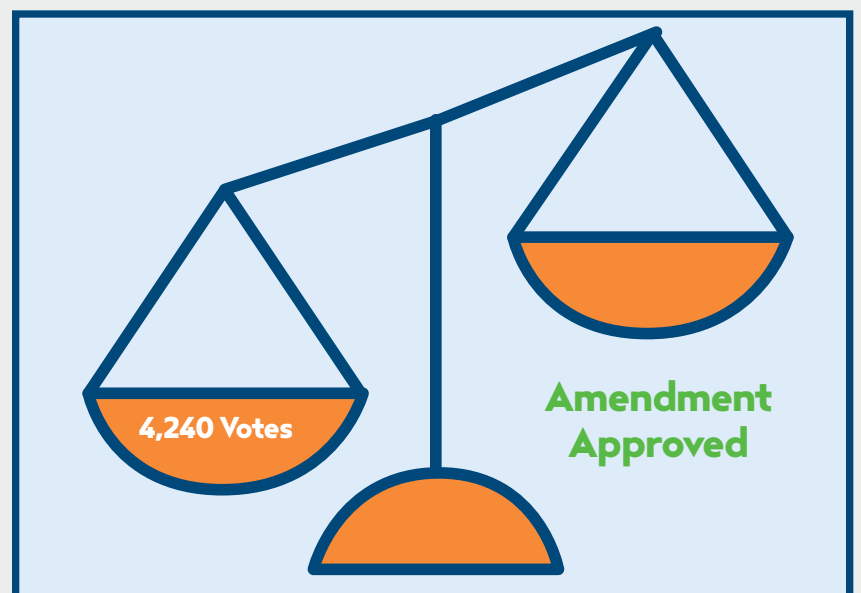
- By May 29, mutuals' representatives to the LWCC board of directors will submit their mutuals' collected comments and suggestions, if any, to the chairperson of the LWCC board of directors.
- By mid-June, the LWCC board will meet (likely via teleconference) to vote on a proposed amendment draft.
- If the LWCC board approves a final draft of the amendment, the final draft will be sent to each mutual's board of directors for consideration and action.

HOW THE VOTES ADD UP

The current Trust Agreements dictate that an amendment must achieve at least 75 percent of mutual boards' weighted votes in its favor before it can be considered approved.

The weight of each mutual board's vote corresponds to the number of its residential units. If a mutual has 100 units, its vote counts as 100.

Leisure World has 5,660 total units; to reach 75 percent, mutuals' weighted votes need to amount to at least 4,240 votes.



To view or download Leisure World's Trust Agreements and the amendments made to them, go to (residents.lwmc.com) > Resource Center > Leisure World of Maryland Corporation.

Exec Comm.

► from page 1

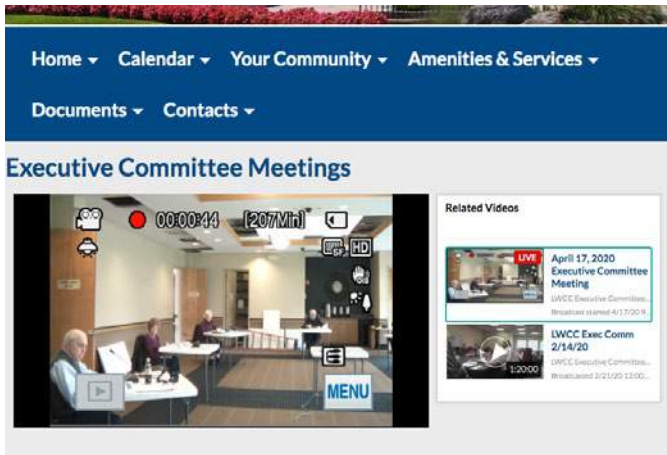
motion was approved, the LWCC board of directors chairperson has been considering options that might adapt the next steps in the typical amendment process, given the unusual circumstances currently facing governance bodies. (For more details, see “The Current Amendment Proposal” on page 5.)

Gate Access

The executive committee also approved the installation of the Visitor Management module of the DwellingLIVE system in conjunction with the installation of the resident access radio-frequency identification (RFID) system for the coming automated gate access system.

Installing these technologies would allow automated access to the community at all three Leisure World gates, and installing them simultaneously would enhance security and decrease the project’s cost by at least \$6,000, according to the rationale for the resolution.

The DwellingLIVE visitor management system would permit automated reading of all pre-authorized, pre-issued guest passes (on mobile devices and printed visitor passes) at the Norbeck Gate. All other visitors would need to enter the community through



At left, the LWCC executive committee's April 17 meeting is broadcast live on the resident website, (residents.lwmc.com). Screenshot by Leisure World News. At right, a telephone and speaker sits atop a table during the meeting. Residents were able to comment on the meeting’s action items by phone. Photo by Leisure World News



either the Main or Connecticut Avenue gate.

The RFID system would allow resident vehicles with an RFID tag to enter the community at all three gates, at which security cameras would also be installed.

These installations were approved at a cost not to exceed \$30,000. Funding is to come from the Equipment Purchase Fund and will be reimbursed as part of the 2021 budget process.

Pool Resurfacing

The executive committee also approved Atlantic Pool Inc.’s proposal for the renovation of the Clubhouse II indoor pools’ surfaces in an amount not to exceed \$92,500.

The project, which is expected to begin in July, will include resurfacing and replacing the pool tank plaster in the clubhouse’s two pools

and heated spa and replacing the glass enclosure south facing wall. Funding for the project is to come from the Replacement Reserve Fund.

Audit

A recommendation from the Audit Advisory Committee to accept the 2019 audit report of the Leisure World of Maryland Trust performed by the CPA firm of Gross Mendelsohn & Associates was also approved.

To watch a recording of the April 17 meeting, go to (residents.lwmc.com) > Your Community > LWCC Executive Committee & Board Meeting Recordings.

The next meeting of the LWCC executive committee is tentatively scheduled for Friday, May 15, at 9:30 a.m. in Clubhouse I, but will be closed to resident foot traffic.

To attend the meeting

remotely by telephone, dial (425-436-6398). When prompted, use the telephone keypad to enter the access code 729411 followed by the pound (#) sign. Long distance charges may apply for residents who do not have an unlimited phone plan. Callers assume responsibility for any charges incurred.

Residents who would like to attend remotely via their computer or mobile app should visit (www.freeconferencecall.com), download the app to their computer or mobile phone and create a user profile. The online meeting ID is: LWMC-Management. Participants assume responsibility for any data charges that may apply.

To watch and listen to the meeting’s live broadcast online, visit (residents.lwmc.com) > Your Community > LWCC Executive Committee & Board Meeting Recordings.

Foot & Ankle Specialists

of the Mid-Atlantic



*Now the preferred podiatry practice
at MedStar Health at Leisure World*

End your toes woes!

Walk pain-free!

Visit Dr. K at MedStar Health
at Leisure World,
3305 N. Leisure World Blvd.,
for treatment of your toes,
heels, ankles and feet.

Dr. Freedman & Dr. Kathrotiya-Mago
Leisure World Plaza Professional Building
3801 International Dr. • Suite 204 • Silver Spring, MD 20906
www.footandankle-usa.com

Call today: (301) 598-0130



Kitchen & Bath Remodeling

301-598-8400

SERVING LEISURE WORLD SINCE 1988

Due to current Covid-19 conditions, we are only doing
emergency work- **plumbing leaks, grab bars,
emergency ramps, widen doorways, etc.**

*Let us know if you have an essential need! Otherwise,
we will see you after this situation is over!*



MHIC# 36674



Patients with COVID-19 have experienced mild to severe respiratory illness.

Symptoms* can include

FEVER



COUGH



***Symptoms may appear 2-14 days after exposure.**

SHORTNESS OF BREATH



Seek medical advice if you develop symptoms, and have been in close contact with a person known to have COVID-19 or if you live in or have recently been in an area with ongoing spread of COVID-19.



www.montgomerycountymd.gov/coronavirus

For more information: www.cdc.gov/COVID19-symptoms

GOVERNANCE & Information

Dial 301-598-1313
for recorded Daily Events

Energy Advisory Committee

Committee Compares Types of Light Bulbs

by Bob Morrisson

A simple and cost-effective way to reduce your electricity usage is to install energy efficient bulbs in your home.

The amount of light a bulb produces is measured in lumens of light. Bulbs producing the same number of lumens can consume vastly different amounts of power, which is measured in watts. Let's compare three common types of bulbs.

Types of Bulbs

In an incandescent bulb, electricity passes through a wire filament causing it to incandesce, which means it produces light and heat.

- A 750-lumen incandescent lamp consumes 60 watts of power

In a compact fluorescent lamp (CFL), high voltage electricity passes through a coiled glass tube filled with mercury vapor. This causes material on the tube wall to fluoresce, which means it produces light.

- A 750-lumen CFL consumes about 14 watts of power
CFLs contain mercury, which is hazardous if the bulb is broken

A light emitting diode (LED) is a semi-conductor that produces light when electric current flows through it.

- A 750-lumen LED consumes about seven watts of power

Cost Comparison

Here is a chart created by Energy Advisory Committee member Bob Morrisson that has cost comparisons for these three types of 750-lumen bulbs operating 12 hours a day at 10 cents per kilowatt-hour:

60 Watt Bulb - 12 Hours per Day at 10¢ per Kilowatt Hour						
Bulb Type	Watts Used	Hours for 1 Kilowatt	Operational Costs			
			1 Day	1 Week	1 Month	1 Year
Incandescent	60.00	16.7	\$0.072	\$0.504	\$2.160	\$26.280
CFL	14.00	71.4	\$0.017	\$0.118	\$0.504	\$6.132
LED	7.00	142.9	\$0.008	\$0.059	\$0.252	\$3.066

Switching to LED lighting can save a substantial amount of energy, and money, each month.

Even Motel 6, which still "keeps the light on" for you, now saves energy with LED bulbs.

About the Committee

The Energy Advisory Committee (EAC) monitors opportunities for energy-related savings. EAC meetings are held the third Tuesday of every month at 9:30 a.m. in Clubhouse I. Meetings are suspended during current restrictions.

Residents are encouraged to share their energy-saving ideas at these meetings or to submit them to Bob Namovicz, EAC chairperson, at (namovicb@gmail.com).

2020 Governance Meeting Recordings

Executive Committee and Board of Directors meetings are recorded and available to view three business days after the meeting at (residents.lwmc.com) > Your Community > LWCC Executive Committee and Board Meeting Recordings.

Executive Committee Meeting

The Executive Committee is tentatively scheduled to meet on Friday, May 15, at 9:30 a.m. To attend the meeting remotely by phone, dial (425-436-6398). When prompted, dial the access code 729411 followed by the pound sign (#). To attend the meeting via computer or mobile app, visit (www.freeconferencecall.com), download the app to your computer or mobile phone and create a user profile. The online meeting ID is: LWMC-Management.

To watch and listen to the meeting's live broadcast online, visit (residents.lwmc.com) > Your Community > LWCC Executive Committee & Board Meeting Recordings. The April 17 meeting of the Executive Committee is available to view on (residents.lwmc.com).

Board of Directors Meeting

No meeting scheduled.

Group Email Addresses

Residents wishing to contact Leisure World Management or a specific department, the LWCC Board of Directors, or the Executive Committee may send an email to the appropriate email address listed below. It will automatically be forwarded to all members of that group who have an email address on record.

Messages to any of the email groups should pertain only to the management and operation of Leisure World trust properties, services, or activities. Please do not send emails to multiple addresses, as there will be a duplication of recipients and will not result in a faster response to your question or comment. Messages pertaining to mutuals or anything else which Management, the Board of Directors, or Executive Committee does not control should also not be sent to these groups.

The group email addresses are:

- LWMC Management - management@lwmc.com
- LWCC Board of Directors - board@lwmc.com
- LWCC Executive Committee - execcomm@lwmc.com
- Administration - administration@lwmc.com
- Communications - communications@lwmc.com
- Education and Recreation - recreation@lwmc.com
- Physical Properties - physicalproperties@lwmc.com
- Security - security@lwmc.com

Help Is Available

by Leisure World News

The COVID-19 pandemic may be causing stress and anxiety for residents and their families. They may worry about the impact on their social or home lives and financial situations and feel uncertain about how life will return to "normal."

Residents who are in immediate need of talking to someone about their stress and anxiety can call the County's 24/7 Crisis Center at (240-777-4000). EveryMind also has a 24/7 hotline available at (301-738-2255). Here is a list of other services that can help during a crisis:

- Leisure World Social Services – (301-598-1581)
- Montgomery County Aging and Disability – (240-777-3000)
- Catholic Charities, Silver Spring – (301-942-1790)
- Montgomery County Government Services – 311

Add Your Suggestions to Help Community Plan its Future

by Arthur N. Popper

The in-person community meetings scheduled for March to continue the strategic planning process for Leisure World were canceled due to COVID-19, but all residents have the opportunity to participate remotely by answering a series of questions.

The information gathered from residents' answers to these questions, along with the information collected from last year's focus groups and resident survey, will be used by George Mason University (GMU) consultants to develop a long-term strategic plan for Leisure World's future.

Residents who volunteered to participate in the community meetings' discussion groups are individually participating by answering these questions. This process, which is being conducted by consultants from GMU in consultation with the Special

Strategic Planning Committee (SSPC), is ongoing and will be completed very shortly.

Any resident who wishes to respond to one or more of the questions in the box below can do so by mailing their response to (SSPC, attn.: Ernesto Castillo, 3701 Rossmoor Blvd., Silver Spring, MD 20906) or sending it in an email or as an attachment to an email to (sspc@lwmc.com). Answers must be received by Wednesday, May 13.

Please note the following:

- Participants do not have to include their name in their response. However, if they do, under no circumstance will their name be used anywhere, nor will any information be used that could identify them as the persons making a statement. Participants' confidentiality is paramount!

- If you write out your response by hand and mail it to the committee, please write very neatly.
- In all cases, put the number of the question you are answering before the answer. Otherwise, it may not be clear as to which question you are referring.
- Please be brief in your answers.

As a reminder, GMU's consultants and the SSPC considered the option of replacing March's in-person community meetings with online meetings or conference calls, but these were determined too time-consuming, difficult and costly to conduct.

Despite the loss of interaction between residents that these in-person meetings would have likely generated, GMU's consultants say they will still be able to gather the information they need to develop a strategic plan.

STRATEGIC PLANNING COMMUNITY MEETING QUESTIONS

1. Nearly 40 percent of Leisure World residents are 80 years of age or older. Should Leisure World consider changing the facilities and amenities available to residents to reflect the aging of the residents, or remain first and foremost an "active senior" community? (This is not meant to deal directly with each amenity; it is a strategic-level discussion). Please briefly explain your reasons.
2. Do you feel that residents have adequate opportunity and spaces to gather and socialize at Leisure World? What are the top three places in Leisure World where residents go to be with other residents? How would you improve upon the social spaces in Leisure World? (Please consider the types of spaces available, the condition/quality of these existing spaces and the need for new spaces.)
3. The research team has observed that Leisure World's governance structure, with 29 mutuals, is very complex and creates challenges for making strategic decisions for the overall community. Please tell us about the strengths and weaknesses of the current governance structure and what, if anything, should be changed. Please note that this question is not about the job performance of any individual(s). As part of your response, tell us whether you would agree to reforming the mutual structure that would result in fewer mutuals and fewer board members? Are there other areas regarding the structure of Leisure World governance that you would like to address?
4. Unit (home) maintenance and remodeling can be a significant concern in older residential communities. If properties deteriorate too much it hurts everyone's property values. What is your perception of the quality of housing units in Leisure World (not including Trust areas)? How would you encourage unit owners to do the upkeep/remodeling that contributes to everyone's property values?
5. There have been several new age-restricted communities developed in the Washington, D.C., region in recent years and there are more being proposed by developers. What do you think it will take for Leisure World to maintain its competitive position and remain a high-quality retirement community over the next 10 years (or more)?
6. The resident survey conducted for the strategic planning process clearly showed very low usage rates among some of the "big" amenities at Leisure World including the golf course, swimming pool, and tennis/pickleball courts. Yet most residents, and in some instances a large majority, feel these amenities are important. What are the advantages and disadvantages of keeping, changing, or removing low-use amenities? Please consider this from the perspective of current owners and marketing units to future buyers.
7. A few years ago, the community considered changing the name of Leisure World. Ultimately, the Leisure World Community Corporation board of directors rejected that idea. Information from our earlier focus group sessions suggest that at least some residents feel that a name change would help the marketability of Leisure World homes. What are your thoughts on the community name?
8. Are there other topics you would like to discuss to help the Special Strategic Planning Committee develop the community's strategic plan and vision?

Closings and Modified Schedules

by Leisure World News

In an effort to protect the community from COVID-19 (coronavirus) and to comply with the governor's executive orders, several Leisure World facilities and services are closed until further notice or have modified their hours of operation. Check TV channels 972 and 974 and (residents.lwmc.com) for updates to these schedule changes.

ADMINISTRATION BUILDING

Accounting	Closed to resident traffic; however, payments are accepted via U.S. Mail; include payment coupon or unit address on check
Human Resources.....	Teleworking
Information Technology.....	Teleworking and staff onsite periodically
Management.....	Closed to resident traffic
Montgomery Mutual.....	Closed to resident traffic
Mutual Assistants (mutual support services).....	Teleworking, and staff onsite on rotating basis
Property Transfers/Resales.....	Staff onsite on rotating basis
Reception Desk.....	Closed
Security & Transportation	For administrative assistance, phone (301-598-1355)
Trust Assistants.....	Teleworking and staff onsite periodically

Vendors:

- Lifeline.....Teleworking; staff onsite periodically. Phone (301-598-1329)
- Post Office.....Closed to resident traffic
- Signal Financial Federal Credit Union.....Open Monday, Wednesday and Friday from 9 a.m.-4 p.m. by appointment only (no over-the-counter) transactions. Phone (301-933-9100)
- Weichert Realtors.....Closed until further notice

CLUBHOUSE I (Clubhouse I is closed until further notice.)

Comcast Xfinity.....	Closed until further notice. Phone (855-638-2855) or email (LW_Comcast@comcast.com)
Communications.....	Teleworking; email (communications@lwmc.com)
Education & Recreation	Limited teleworking Monday through Friday. Email (recreation@lwmc.com)
Eyre Travel.....	Closed to resident traffic; phone (301-854-6600)
Leisure World News office.....	Closed to resident traffic; email (lwnews@lwmc.com) or phone (301-598-1310) and leave a voicemail
Library.....	Closed until further notice
Restaurants	Terrace Room offering delivery daily from 11 a.m.-6 p.m. Phone (301-598-1330), or email (perriecateringllc@gmail.com). Orders may be placed beginning at 9 a.m.

CLUBHOUSE II (Clubhouse is locked from 7 p.m.-7 a.m.)

Computer Learning Center.....	Closed until further notice
Education & Recreation	Limited teleworking Monday through Friday. Email (recreation@lwmc.com)
FISH Office.....	Appointments only; phone (301-598-4569)
Fitness Center	Closed until further notice
Indoor Pools.....	Closed until further notice
Tennis/Pickleball courts.....	Closed until further notice

GOLF FACILITIES

Golf Course.....	Closed until further notice
Pro Shop and Lounge.....	Closed until further notice

MEDICAL CENTER

MedStar Offices.....	Open; residents encouraged to use televisits with providers when possible. Phone (301-598-1590) with questions on medical services provided at this time
Dr. Carmen DeVries, dentist...	Closed until further notice
Pharmacy.....	Closed to walk-in pick-up; free delivery encouraged for new and established patients. Phone (301-598-1005)
Social Services.....	Teleworking; no field work until further notice. Phone (301-598-1581) or email (smontgomery@lwmc.com)
Physical Therapy.....	Open Monday, Tuesday and Thursday for video and in-person visits

PHYSICAL PROPERTIES DEPARTMENT (PPD)

Customer Service.....	Closed to resident traffic. Phone (301-598-1500)
Warehouse.....	Closed to resident traffic
Maintenance.....	Limited staff, essential maintenance only
Trash.....	Operating on regular schedule

SOCIAL SERVICES

Teleworking; no field work until further notice. Call (301-598-1581) or email (smontgomery@lwmc.com)

TRANSPORTATION

Dial-a-Ride.....	Closed until further notice
Shuttle Buses.....	Buses run Monday, Wednesday and Friday on a modified 2-bus schedule (Saturday schedule, 9 a.m.-1:30 p.m.)
Metrobus.....	Operating on a modified Sunday schedule until further notice
Mobility Van.....	Available Monday, Wednesday and Friday from 9 a.m.-1:30 p.m.

KEEP UP WITH
YOUR COMMUNITY



Follow Leisure World on
facebook at: www.facebook.com/LeisureWorldofMaryland/



Follow Leisure World
on Twitter:
[@LeisureWorldMd](https://twitter.com/LeisureWorldMd)



COVID-19 RESOURCES

Social Distancing

SOCIAL DISTANCING

WHAT IS IT?

Staying home, avoiding large crowds and gatherings.



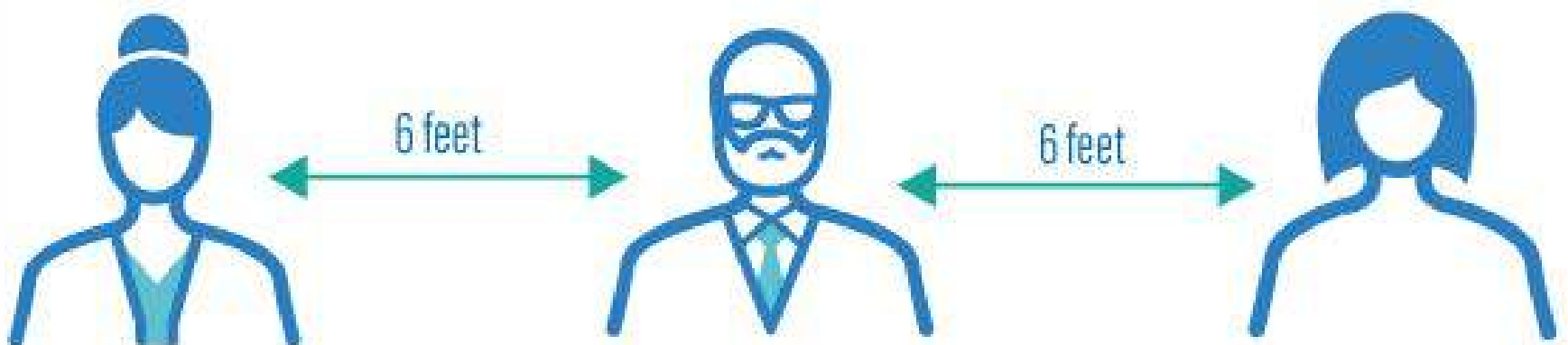
WHY DOES IT MATTER?

It can help limit the spread of the coronavirus (COVID-19).



HAVE TO GO OUT?

Keep six feet of distance between you and others.



montgomerycountymd.gov/covid19



THOUGHTS & OPINIONS: *From Our Residents*

GIVING THANKS

In this pandemic time, I would like to thank the Leisure World Community Corporation board of directors and Management of Leisure World. I have been taking walks every day. We live in such a beautiful place; it is so peaceful and calming. Getting out and looking at our beautiful surroundings is good for the soul.

– Sandy Marks

MUTUALS SHOULD VOTE AGAINST RAISING RESALES FEES

The Leisure World Community Corporation (LWCC) executive committee, acting on delegated authority that they should not have been given, is recommending that all mutual boards agree to raise the Leisure World resale fee from two to three percent. That is the amount that buyers of our units have to pay over and above the contracted amount.

This is a very bad idea for all Leisure World residents. It will make it much more difficult for you to sell your unit, if and when that time comes. You should contact your mutual board members to urge them to vote against this proposal.

The LWCC board and executive committee seem to continually act as if they have never seen a fee increase they didn't like. They don't seem to care about the ability of residents and future residents

to pay whatever amount they care to choose. They regularly vote to increase our monthly fees more than the increase in the cost of living, even though the Leisure World governing documents say the increases should ordinarily be limited to that amount. The waste of money here is outrageous. I believe three different architectural firms were hired to plan the new Administration Building, and the work of the first two was thrown out even though it amounted to hundreds of thousands of dollars. And that is just one example.

You will be told that the proposed increase will not affect your monthly payments. However, it will greatly affect your ability to sell your unit. For a \$200,000 unit, the increase will be \$2,000, so a buyer will have to pay \$6,000 in addition to the sale price. For a \$400,000 unit, the increase will bring the amount a seller has to pay to \$12,000 in addition to the sale price. How many buyers will go elsewhere rather than pay that amount?

And what is the increase for? To allow the LWCC board of directors and executive committee to spend more and more money, when, especially in a time of economic collapse in our country, they should be spending less.

I'm sure the usual members of the LWCC board of directors will write in response to this letter that it is "important" that the resale percent must be raised. Ask why. There is no good reason, and this increase will, in

A Few Things to Remember

Relevance: Make sure that your submission is relevant to the LW community as a whole and not to just one person, mutual, or organization.

Respect: Remember that your opinion is about ideas, not individuals, and please avoid personal attacks.

Brevity: Being concise will ensure that your opinion will have maximum impact.

Accuracy: Document all factual assertions. Opinions that are backed up with facts are more powerful, but only if the facts are accurate.

Ownership: All submissions are subject to editing but you will have the opportunity to approve the edits before publication.

Opinions are strictly those of the writers. Thoughts and Opinions is maintained by the Communications Advisory Committee.

the end, make it much more difficult for any Leisure World resident to sell his or her unit.

– Paul M. Bessel

LEISURE WORLD INSPECTOR GENERAL UNNECESSARY

The April 17, 2020 issue of the Leisure World News contains a proposal for an Office of Inspector General (OIG) for Leisure World. The author also solicits responses. This is my response.

I consider the position of an OIG in Leisure World unnecessary. Also, I have a number of concerns and questions for this proposal. Is there a lack of trust with the members of the Leisure World Community Corporation (LWCC) board of directors? Is there a lack of trust in the county and/or state agencies that already have safeguards

in place to protect the rights of consumers and homeowner associations?

Would an Inspector General (IG) be an independent authority as is the situation of an OIG in a federal agency? How would an IG be selected? What would be the OIG qualifications and its authority? What would be the salary, or would the IG be a volunteer? Would an IG be a Leisure World resident? Would an IG be elected by the residents or the LWCC board of directors? Would an IG be appointed and, if so, by whom? If an IG is appointed by the LWCC board of directors, then is that IG really independent? Who or what triggers an action by the OIG? Also, could the OIG use its authority to overrule the LWCC board of directors regarding an expense thereby delaying or thwarting a proposed project, for example, a new administration building?

SUBMITTING AN ITEM TO THOUGHTS & OPINIONS

1. Submissions must be emailed to (aclwn@lwmc.com) or delivered to the LW News Office.
2. Receipt of submissions will be confirmed by email or telephone.
3. Submissions must state the writer's name, address, telephone number, and email address, if any, but if the material is published, it will include only the writer's name.
4. LW News cannot guarantee when or if a submission will be published.
5. To view the full Leisure World News Guidelines, sign in to (residents.lwmc.com) and click on Documents, then select the Advisory and Special Committees folder, and click the Communications folder.

An OIG for a homeowners association is not exactly the same as an OIG for a federal agency that spends and disperses federal tax funds. Please remember that the federal government answers only to itself. A citizen, local municipality or state cannot seek relief on its own and overrule or penalize the actions taken by a federal agency. Therefore, the federal government created an independent watchdog, the OIG, as a protection to ensure proper spending and accounting of its disbursements. We Leisure World residents, however, have local, state and, perhaps, federal protections and safeguards already in place as well as independent accountants who conduct annual audits.

The author of the proposal writes about the need for an IG “to discover the possibility of misconduct, waste, inefficiency, fraud, theft, etc.” But, no specific examples of wrongdoing in Leisure World are given. The possibility of future wrongdoing, in my

opinion, does not justify a need for an OIG.

I believe that the people who govern and care for Leisure World are generally good, honest and competent people. The LWCC board of directors is composed of volunteers who live in Leisure World and are motivated to do their best to improve living conditions here. Frankly, while the author may not have intended any offense, I find the suggestion for an OIG to be very inappropriate.

– Peter A. La Lena

A WONDERFUL IDEA

I think an Office of Inspector General is a wonderful idea and much needed. The administration of Leisure World has had no independent oversight since its establishment, and we do not know what inefficiencies, waste or fraud have occurred. Oversight is always merited. Thank you, Antonio Altamar, for your idea.

– Shirley Kirschenbaum

INSPECTORS GENERAL FOR LEISURE WORLD

A recent letter to the Leisure World News said that Leisure World needs an inspector general (IG). What a brilliant idea. This is such an opportune time to consider this recommendation because there is great talent available. Glenn Fine was fired as Inspector General of the Department of Defense, and Michael Atkinson was fired as Inspector General of the Intelligence Community. There are other IGs in trouble so they might soon be available.

I nominate Fine to supervise the eight armed and other personnel in the security department. I nominate Atkinson to oversee the E&R department. When the IG of the Department of Agriculture gets fired, he can be tasked to oversee the grounds department including the golf course.

Why stop there? Sarah

Sanders is no longer press secretary. She might be available to be IG for the Leisure World News. Her imagination and creativity with the facts would add much to the journal. Kellyanne Conway would be an even better pick for the job, but I think she is still engaged.

Hiring these out-of-work people would give Leisure World some powerful talents and help with the unemployment crisis.


– Joel Katz

WEICHERT, REALTORS
LEISURE WORLD PLAZA

MAYNARD E. TUROW
Agent 22 years... Listings, Resales

**THINKING OF SELLING??
Or Friends – Relatives Buying??**

A Real Estate specialist for 22 years working exclusively the senior market. I can answer your questions & find you your dream home. If selling, I'll get you the best price!



(C) 301-518-3834

Weichert Realtors

(O) 301-681-0550

Free brochures, Comps, Layouts, Info
Direct: 301-518-3834
maynardturow@yahoo.com
Free notary by appt.

COVID-19 ELEVATOR ETIQUETTE



DON'T
overcrowd



DO maximize
distance



DON'T forget
your mask and
gloves



DO take the
stairs if able

STOP THE SPREAD OF GERMS

Help prevent the spread of respiratory diseases like COVID-19.

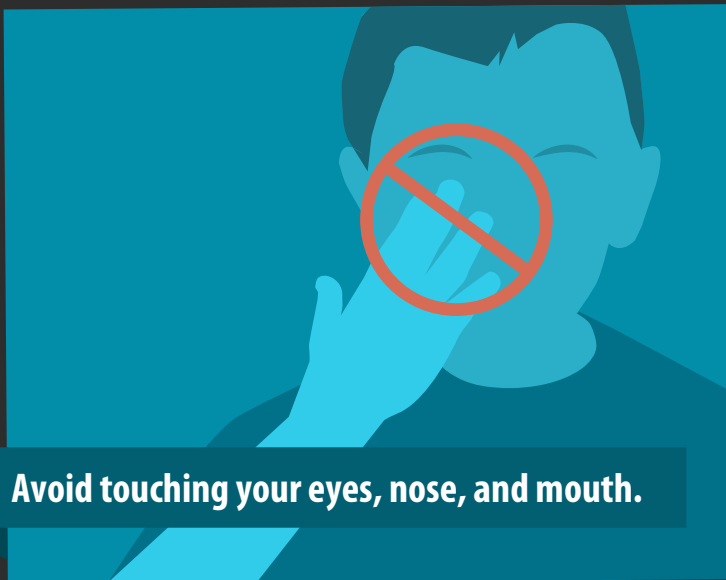
Avoid close contact with people who are sick.



Cover your cough or sneeze with a tissue, then throw the tissue in the trash.



Avoid touching your eyes, nose, and mouth.



Clean and disinfect frequently touched objects and surfaces.



Stay home when you are sick, except to get medical care.



Wash your hands often with soap and water for at least 20 seconds.



www.montgomerycountymd.gov/coronavirus

For more information: www.cdc.gov/COVID19

CS314915-A

Experienced. Vetted. Approved.



Judge Fogleman, Judge Boynton, Judge Berry, and Judge McAuliffe

JUDGE
CHRISTOPHER C.
FOGLEMAN

JUDGE
DAVID A.
BOYNTON

JUDGE
BIBI M.
BERRY

JUDGE
MICHAEL J.
McAULIFFE

Our Sitting Judges have been thoroughly vetted via the merit selection process, including:

- 25-plus page application exploring personal and professional history.
- Approximately 13 interviews with the Judicial Selections Committees of various state and local Bar Associations.
- Referendum ballot sent to over 2,000 members of the Bar Association for Montgomery County who vote on the qualifications of each applicant.
- Independent vetting by the Trial Courts Judicial Nominating Commission.

Meanwhile, no vetting is required to challenge a sitting judge.

We need competent and experienced judges to protect the integrity of our Bench.

VOTE FOR YOUR SITTING MONTGOMERY COUNTY CIRCUIT COURT JUDGES

VOTE BY MAIL OR ON JUNE 2ND IN PERSON

For more information on the 2020 Primary, go to www.elections.maryland.gov

www.electsittingjudgesmcs.com

[f/ElectSittingJudgesMontgomeryCounty](https://www.facebook.com/ElectSittingJudgesMontgomeryCounty)

BY AUTHORITY OF ELECT SITTING JUDGES MONTGOMERY COUNTY SLATE, NANCY HOSFORD, TREASURER.

EVENTS & Entertainment

■ Education and Recreation Department

E&R Events Canceled Through May

In the interest of protecting residents and the community from the COVID-19 pandemic, the Education and Recreation Department (E&R) has canceled all E&R events and movie showings scheduled for May.

E&R hopes to resume events and movie showings after restrictions are lifted; more information will be forthcoming.

For more information or questions, email (recreation@lwmc.com).

■ Fireside Forum

Forum Plans to Restart in the Fall

by Jonas Weiss

The Fireside Forum has had to cancel programs during the pandemic shutdown, but is ready to restart with a full series of excellent speakers as soon as there is an official recommendation to proceed.

Talks are planned to be given once a month on Sunday afternoons from September to June in the Clubhouse II auditorium. Here are the titles of the first five programs. Details will be forthcoming.



- Sept. 13 – “Separation of Church and State” by Fred Edwords
- Oct. 4 – “You Need a Schoolhouse” by Stephanie Deutsch
- Nov. 1 – “Eye Witness Identification” by John McCarthy
- Dec. 6 – “Artificial Intelligence and Robotics” by Sheldon Hochberg
- Jan. 10 – “Guide Dogs” by Gen. (Ret.) Gale Pollack

■ Ballroom Dance Club

May Dance Canceled

Due to the coronavirus crisis, the Ballroom Dance Club’s Saturday, May 23, dance has been canceled.

– Ida Leong



2020 Movie Schedule

Sponsored by the E&R Department

Due to the COVID-19 pandemic, the following movie showings have been canceled:

Show Date & Time	Movie	Tickets Available
May 10, 2 p.m.	Poms	CANCELED
May 21, 1 p.m.	What Men Want	CANCELED
June 11, 1 p.m.	Stan and Ollie	CANCELED

Movies are subject to change.

Coming in 2020

Due to the COVID-19 pandemic, the following programs are canceled:

May 16, 9:30 a.m. CANCELED	Spring Flea Market
May 23, 4:30 p.m. CANCELED	Duke Ellington School for the Performing Arts
May 30, 2 p.m. CANCELED	Jones and Haywood Dance School
May 31, 2:30 p.m. CANCELED	Polyhymnia a Capella Chamber Chorus
June 6, 7 p.m. CANCELED	Comedian Randy Riggle
June 11, 9:30 a.m. CANCELED	Community Fair
June 13, 4:30 and 7 p.m. CANCELED	The Legendary Orioles

Watch Leisure World News for more information on these and other upcoming programs throughout the year.

■ Sock Hop Group

Sock Hoppers Want to Dance with Somebody

by Abigail B. Murton

Take 2 Entertainment will spin the tunes in Clubhouse II as soon as the Sock Hop Group gets the word from Leisure World administration that events may be held again in the clubhouses.

The cost of admission is \$5, with soda, water and some snacks provided. Attendees can bring extra snacks and beverages. Dancers will definitely need a good time when the pandemic is over.

Sock Hop Live will also return to the Clubhouse I Crystal Ballroom when administration gives the go-ahead. Enjoy the live band Groove Quest from 7-10 p.m. Dance lessons are given from 6:30-7 p.m. The cost of admission is \$10, with sodas and water provided. Alcoholic beverages can be purchased at the bar, and attendees are welcome to bring snacks.

For questions about the Sock Hop Group, contact Doug Brasse at (301-448-8708). Stay safe, friends.



■ Foundation of Leisure World

Memorial Day Observance Canceled

Due to the coronavirus, the Foundation of Leisure World has canceled its annual Memorial Day observance.

– Marian Altman



WE ARE HERE TO HELP

For many, this time of change and uncertainty adds a new wrinkle to existing challenges—from regaining strength and function after hospitalization to caring at home for a loved one with Alzheimer's.

For 70 years, Brooke Grove Retirement Village has been providing excellent care in Montgomery County. Our innovative approaches, LIFE enrichment programming and beautiful 220-acre campus continue to enhance the health and well-being of all in our care.

CALL TODAY TO LET US KNOW HOW WE CAN HELP.
301-260-2320



18100 Slade School Road
Sandy Spring, MD 20860

Take a virtual tour at
www.bgf.org.



INDEPENDENT LIVING ASSISTED LIVING REHABILITATION
LONG-TERM CARE MEMORY SUPPORT

HEALTH & Fitness

■ Lions' Vision Support Group

May 13: Support Group Holds Virtual Meeting

by Larry Cohen

Sharing is caring, and the Lions' Vision Support Group wants to share its collective knowledge with its members. Until it gets the all clear to resume meeting in person, the Group will be virtually available.

The Group's next meeting on Wednesday, May 13, at 1 p.m. should be much smoother than the April meeting. Jane Carona will set up another virtual meeting with Zoom. Residents may call in using their smartphone, tablet or computer. The meeting provides visual contact for those who use their smartphone, computer or tablet, but the information will be the same for those who use the audio-only phone call option.

To join the meeting by smartphone, computer or tablet, go to (<https://zoom.us/j/9837284784> 7?). To join by phone, dial (1-301-715-8592

US). The meeting ID is 983 7284 7847 and the password is 031968. For questions about joining the meeting, call any of the people listed in this article.

The Group plans to discuss links to needed items such as food, produce, masks and cleaning supplies. Group leaders will be there to answer questions about assistive technology and anything members would like to talk

about. The Group can assist anyone who is having difficulty with any of these applications or in reaching some of these available services.

Contact Information

For assistance or more information, call Larry Cohen at (908-770-9111), Bobby Bobo at (301-879-0103), Jane Carona at (301-598-2131) or Terri Nettles at (240-970-5737). If they don't have the answer, they know where to get it.

The Group hopes to see everyone at its virtual meetings until it is safe out there again.



■ FISH (Friends in Sickness and Health)

Is it a Cane or Portable Handrail?

by Beth Leanza

Some people may feel embarrassed or foolish using a cane or walker, but using one can make walking, especially on uneven surfaces, easier and safer. FISH has a few canes to give away.

The FISH office in Clubhouse II is currently closed because of the COVID-19 pandemic, but residents may call (301-598-1345) and leave a message to schedule an appointment.

Lost Something?

FISH is also the place that houses found items. The office never gives away jewelry, (mostly orphan earrings), watches or phones. Residents who've lost an item can check if it's at FISH by calling (301-598-1345) and leaving a message.

Lost items brought to the E&R office are held there for a time and then turned in to the FISH office.

About FISH

FISH is an acronym that stands for "Friends in Sickness

and Health." The organization lends assistive equipment to residents and employees such as wheelchairs, walkers, commodes and shower chairs.

FISH is not accepting donations at this time. Donations are checked by volunteers to see that they are in safe, working condition. However, residents who take an item may want to check first with a medical professional.

During normal times, volunteers are at the FISH office Monday through Friday from 10 a.m.-4 p.m. To schedule an appointment for an item, call Beth Leanza at (301-598-4569).

FISH is closed for major holidays and when Montgomery County schools are closed because of inclement weather. When schools are delayed because of weather, the FISH office's morning shift is canceled.

Get Involved

Residents who would like to join FISH are asked to call Beth Leanza at (301-598-4569) to set up a training session.

We listen to *your story.*

Assisting Hands® provides **dependable** and **compassionate** in-home care, including:

- Care matching
- Engaging activities
- Safety monitoring
- Transportation
- Specialized dementia programs



Call now for your **Help+Alert™ Pendant***!



Assisting Hands®
Home Care

Give us a call at

301.363.2580

www.assistinghands.com/potomac

License #R3925. Licensed as a Residential Service Agency by the Maryland Department of Health and Mental Hygiene, Office of Health Care Quality. *Certain restrictions apply. Free Assisting Hands® Help+Alert™ pendant with at least 18 hours of service. Call for details. ©2020 Assisting Hands® Home Care, Nampa, Idaho 83687. All Rights Reserved.



JOHN J. FERGUSON, ESQ.
FERGUSON & WILPON

ESTATE ADMINISTRATION/PROBATE

WILLS POWERS OF ATTORNEY LIVING TRUSTS

REAL ESTATE MEDICAL DIRECTIVES/LIVING WILLS

CALL JOHN FERGUSON
301-570-3633

3406 Olandwood Court, Ste. 202, Olney, MD 20832
WE CAN MEET IN YOUR HOME OR OUR OLNEY OFFICE

Health & Fitness In Brief

Several health-related clubs, groups and organizations have canceled or postponed their meetings and events due to COVID-19 (coronavirus). To check on the status of an event or meeting, watch channel 972 or contact the club, group or organization directly.

Al-Anon Meeting: Al-Anon (for family and friends affected by alcoholism) meets Fridays at 2 p.m. at Our Lady of Grace Church Parish Center, near Leisure World. Enter through the back door (15661 Norbeck Blvd., Silver Spring). For more information, call Bridget at (301-598-3043).

Alcoholics Anonymous (AA): Newcomers welcome. (If outside Leisure World, check in at the main gate.) Meetings are Mondays at noon (Step Meeting) and Thursdays at 6 p.m. (Big Book) in Clubhouse I. For questions, contact Laurie at (240-558-4454).

Alzheimer's Caregivers Support: The Alzheimer's Support Group meets the first and third Wednesday of each month at 3 p.m. in The Inter-Faith Chapel library. For more information, call Sunny at (301-438-2446).

Bereavement Support Group: If your spouse or long-term partner died in the recent past, you may be eligible to participate in a twice-monthly bereavement support group that meets every other Tuesday, 2-3:30 p.m., in the conference room at MedStar Health, 3305 N. Leisure World Blvd. CaringMatters sponsors group meetings. Registration and a phone conversation with Jim Rossi, director of adult bereavement at CaringMatters, is required before attending. If interested, please call Jim at (301-990-0854).

Fitness Center: One of the Fitness Center's personal trainers leads a free orientation tour of the Fitness Center on the second Tuesday of every month at 2 p.m. Learn how to use the equipment and facilities. Registration is not required. Note: The Fitness Center is closed until further notice.

Free Blood Pressure Testing: Come to Clubhouse I for free blood pressure testing, available on the first and third Tuesdays of the month from 9-11 a.m. Note: blood pressure testing is currently unavailable.

Memory Café: The Memory Café meets the last Thursday of every month from 2-3:30 p.m. in Clubhouse I. The program provides social engagement for individuals living with early stage memory loss. Registration is required. For more information, call the manager at (240-428-1342) or the National Alzheimer's Association at (1-800-272-3900) or (TTY: 1-866-403-3073) or visit (www.alz.org).

Living Better with Parkinson's: The Living Better with Parkinson's support group was created under the auspices of the Parkinson Foundation of the National Capital Area to provide support to patients suffering from Parkinson's disease (PD) and their families and caregivers. The group meets the second Tuesday of the month at 3 p.m. in Clubhouse II. Usually there is a presentation by a speaker with knowledge about PD, physical therapy or some other related subject, followed by a period of Q&A. There are no memberships or fees to pay, and the meetings are open to anyone who may be interested. Questions? Contact Ray Weil at (301-598-3447) or (raywwjr@hotmail.com).

Stroke Support Group: You are not alone! The Leisure World Stroke Support Group invites stroke survivors and caregivers to its monthly meetings on the third Tuesday of the month from 1-3 p.m. in Clubhouse II. No registration is needed, and all are welcome. For more information, contact Amy Boltz at (248-652-0304).



Hearing is one of the joys of life. **Don't neglect it!**



From left: Kathryn Balestino-Estes, AuD., Dr. Heather Schwartzbauer, M.D., Allyson Bull, AuD., Dr. Nicholas Mehta, M.D., Dr. Cynthia Chrosniak, M.D.

We have a team of audiology doctors and otolaryngology physicians who work together in two convenient locations to help you.

MEET OUR AUDIOLOGISTS

Dr. Kathryn Balestino-Estes and Dr. Allyson Bull

- Comprehensive and personalized evaluations
- Solutions to fit your hearing needs, lifestyle, and budget
- The latest digital hearing instruments from leading manufacturers
- Many insurance plans offer hearing aid benefits

We are conveniently located in the Professional Building in the Leisure World Shopping Center above Sandy Spring Bank.

LEISURE WORLD PLAZA

3801 International Drive
Silver Spring, MD 20906,
Suite 206

PROFESSIONAL OFFICE BUILDING

1811 Prince Phillip Drive
Olney, MD 20832, Suite 224

CALL TODAY TO SCHEDULE AN APPOINTMENT!

301-774-0074

WWW.MONTGOMERYCOUNTYENT.COM

\$300 Off

a pair of digital hearing aids

\$400 Off

a pair of digital hearing aids when you upgrade your existing aids



Montgomery County **ENT**
EAR, NOSE AND THROAT SPECIALISTS

Drs. Chrosniak, Schwartzbauer and Mehta, M.D.

CLUBS, GROUPS & Organizations

■ Rossmoor Art Guild

Missing the Monthly Art Exhibits? Here's a Preview

by Judy Kirkland

The monthly exhibit by Rossmoor Art Guild (RAG) students is a favorite with residents.

From abstract to realism, watercolors to oils and beginners to long-time students, Leisure World art lovers enjoy browsing the hall from the E&R office to the art studio in Clubhouse I to keep up with artists' freshest works.

In the current stay-at-home environment, the exhibit hasn't been updated and the clubhouse is closed. So, RAG offers Leisure World News readers a peek at a sample of new works.

HelenLouise Pettis is an accomplished abstract painter who works in acrylics using only palette knives – no brushes. When looking at “Bridge to Happy,” imagine the melody of pure, joyful movement and dancing light in full



Clockwise, from left: “Pigs Baking Cakes” by Kathleen Allen, photo by Kathleen Allen; “Shenandoah Headgates: Harper’s Ferry” by Judy Kirkland, photo by Judy Kirkland; “Dawn” by Ann Bolt, photo by Ann Bolt; “Wacky Rookery” by Judith Lessin, photo by Judith Lessin; and “Bridge to Happy” by HelenLouise Pettis, photo by HelenLouise Pettis

splendor on its large canvas.

Judith Lessin uses gouache, or opaque watercolor, and her paintings brim with rich, luminous color and fascinating detail. Many, like “Wacky

Rookery,” shine with humor. She painted these gorgeous and wonderfully silly birds while needing a laugh during these difficult times.

Ann Bolt’s works are always fresh and intriguing. A noted watercolorist, Bolt has been experimenting with inks. “Dawn” delights with its warm, evocative moodiness and the freeform flow of ink. Bolt says she is currently working on a self-portrait in personal protective equipment: “I won’t have to worry about getting my expression wrong,” she notes.

Kathleen Allen is such a versatile watercolorist. Her art ranges from brilliant, figurative work and dazzling landscapes to the charmingly whimsical style of “Pigs Baking Cakes.”

What chaos, what happy chatter! No one looks at this painting without smiling.

Judy Kirkland favors realism and works in acrylics. “Head Gates” was inspired by a hike along the Shenandoah River at Harper’s Ferry. Those head gates were built by a mill that dammed and channeled river water through tunnels to drive its machinery.

When it’s safe, art classes and the monthly exhibits — and the enjoyment they bring — can return. In the meantime, RAG invites anyone interested to join it. Annual dues are just \$15. Checks, payable to RAG, can be mailed to co-registrar Donna Leonard at (14628 Kelmscot Dr., Silver Spring, MD 20906).

■ New Yorkers and Friends Group

New Yorkers Stay Connected and Spread Positivity

by Linda Mahler

During this difficult time of pandemic with the spread of COVID-19 and social distancing, people are at home with restrictions on interactions, but the New Yorkers and Friends Group is staying connected and even making new friends.

Using the latest version of the New Yorkers and Friends directory, complete with all 80 members, each member called the one person or couple listed below their own name and checked on how they were doing, told the person something about themselves and let them know they were not alone.

Since not everyone has email, this phone chain was a great way to reach out to everyone. No tech experience is needed! This is not a chain letter, but a way that everyone can stay connected and even make new friends. As co-president Linda Mahler explained, “We are all in this together and the phone chain enables us to reach out to one another and help with the feelings of isolation and uncertainty that we are all feeling.”

The Group’s international potluck luncheon previously scheduled for Friday, May 15, is postponed until further notice, but the Group will come back stronger than ever when the time is right.

■ Women’s Fun Bunch

Fun Bunch Update

The Women’s Fun Bunch hopes that COVID-19 will pass and allow members to go to Bobby McKey’s Dueling Piano Bar for a brunch and dueling pianos show on Sunday, June 7, as planned.

The Group will make a decision soon about whether it should reschedule and will be in touch with those who have made a reservation.

The Group will be planning for events in the future as this pandemic subsides. Stay safe and stay well, and we look forward to seeing everyone again soon.

– Elinor Tattar and Marlene Golden

Social Distancing Spurs Photographers' Activity in Leisure World

by Fred Shapiro

As the days go by with residents either housebound or keeping a safe distance from one another, Camera Club members are taking advantage of the beautiful scenery and wildlife photo-taking opportunities in Leisure World.

One such member is Louis Paley, who was originally scheduled to present a slideshow to the community featuring photos he took in Leisure World prior to the virus outbreak.

Since then, Paley has taken to the fields to find the animals and birds that make Leisure World their home.

By chance, Paley was spotted on the golf course near Gleneagles Drive by another avid photographer, Tom Marsden. Marsden has his camera permanently focused on the golf course across from his apartment and was able to capture Paley in action.

What Paley and Marsden are doing may motivate more residents, whether Club members or not, to get some fresh air and exercise while capturing photos of the community.

Past Competition

February's photo competition stressed the impact of a single color. Members whose photos were awarded by judge Janet Jeffers were as follows. The titles provide an indication of the broad scope of photo subjects taken and submitted for judging.

Advanced Prints

1st place: "New Jersey Play Area" by Ruthe Kaplan; 2nd place: "Flamingo Courting" by George Kaye; 3rd place: "Bottles of Beer on the Ceiling" by Jon Fife; honorable mentions: "Car on Bridge" by Chuck Bress; "Red Flower" by Bob Kaplan; "Russian Cobalt Blue Vase" by Stewart Lillard; "Purple Dome" by Joanne Mars; "Yellow Dahlia" by Joanne Mars; and "Las Vegas Chandelier" by Lou Paley

General Prints

1st place: "Blue Caddy" by Robert Tropp; 2nd place: "Lighthouse on Lake Michigan" by Julie Friedman; 3rd place: "Warning" by Ann Ferren; honorable mentions: "Pretty in Pink" by Ann Ferren; and "Light Explosion" by Kathy Tsai

Advanced Digital

1st place: "Fern" by Joanne Mars; 2nd place: "Glass Art" by Steven Kline; 3rd place: "Let the Show Begin" by Jon Fife; honorable mentions: "Red Beetle" by Jon Fife; "Red Berries" by Brenda Gillum; "Reflection in Vase" by Bob Kaplan; "Parc Guell Parrot" by Ruthe Kaplan; "Antarctic Iceberg" by George Kaye; "Pollinating" by Joanne Mars; and

"Youngster in Red" by Fred Shapiro

General Digital

1st place: "Pretty in Pink" by Debra MacNealy; 2nd place: "Athens Fish Market" by David Harris; 3rd place: "Circles of Blue" by Julie Friedman; honorable mentions: "Colorado Dune Sand" by Ed Boesch; "In the Tunnel" by Julie Friedman; "Peppers" by R. Frank Gillum; "Roses are Red" by Debra MacNealy; "Field of Flowers" by Trenton Roudabush; "Peek a Boo" by Woody Shields; and "Overpass" by Robert Tropp

Membership

The Camera Club is not meeting, but is still accepting new members. Membership in the Club has two levels. Members who



At left, adult fox with prey, photo by Louis Paley. At right, Louis Paley, photo by Tom Marsden



expect to compete in the monthly competitions pay dues of \$25 for the year. Residents who wish to join the Club to learn more about photography but are not interested in competing pay dues of \$15.

Mail checks for dues to Woody Shields at (Rossmoor Camera Club, 3200 N. Leisure World Blvd., Apt. 817, Silver Spring, MD 20906). Visit the Camera Club's website at (www.rossmoorcameraclub.com).

FREDRICK A. ISAACS, M.D., P.C., FACS BOARD CERTIFIED OPHTHALMOLOGIST

Latest Advances in Cataract Surgery including the Restor[®] & LenSx (Femtosecond)
Treatment of Glaucoma & Macular Degeneration
(Avastin, Lucentis & Eylea Injections)
Complete Exams and Contact Lens Exams

Full Service Optical Shop Glasses, Sunglasses, Contact Lenses

We offer the latest diagnostic equipment for assessment of retinal disease and glaucoma.

ON PREMISES: Visual Fields, Cirrus HD - OCT, Fluorescein Angiography, Stereo Disc Photographs, Corneal Pachymetry and Topography.



**3801 International Drive, Suite 208
Silver Spring, MD 20906
301-598-8500**

LEISURE WORLD PLAZA PROFESSIONAL BUILDING

EMERGENCY APPOINTMENTS AVAILABLE

Down-sized Dance Routines to Try at Home

by Ida Leong

The Ballroom Dance Club's Saturday, May 23, dance was to feature the music of Mike Surratt & The ECB, but the coronavirus crisis has forced the cancelation of this event.

Breathe Deeply

Some Club members have taken advantage of the prolonged crisis to deliberately slow down their normally frenetic pace. The April 17 Club article mentioned tai chi exercises, which some Club members have been practicing in private.

Tai chi practitioners often warm up by doing deep breathing exercises called

qigong, pronounced "chee-gong," meaning "life-energy cultivation." These exercises are graceful and calming, but also deliberate and focused, much like ballroom dancing at its best.

An easy qigong routine some Club members recommend is "Immuni Qi" Qigong Routine for Lungs and Immune System by Jeffrey Chand. Chand explains each movement in detail. Search for the routine on (www.YouTube.com).

Beginners generally practice qigong with just a few moves. Performing the routine outdoors in pleasant weather with quiet music and a buddy also performing the

routine at a safe distance all add depth to the experience.

Expert Recommendations

The Club is fortunate to have several current dance instructors as regular participants at its dances. Carol Bartels of Le Papillon Dance recommends dancers use the crisis-imposed isolation to practice basic movements — honing posture, technique, timing and lead — plus basic ballet exercises.

Bartels looks forward to having her students, Jeremy and Jenna — who have showcased their routines at Club events — resume their competitive dancing in late October.



Ron and Amy Wagaman, who have taught many Club members at their Holiday Park Senior Center classes, are looking forward to a possible July resumption of classes.

For higher level online instruction during the crisis, Ron and Amy highly recommend any of the YouTube videos featuring Victor Fung.

Fung, whose playfully entertaining YouTube video "This is Us" was mentioned in the April 17 article, trained at the Westmore Studio in Los Angeles, where Ron and Amy also studied — small world!

Ann Basso, ABC School of Dance, has stayed in dance form by continuing to provide physical therapy services to clients, including regular visits to Leisure World. Basso encourages Club members to stay safely active.

Dance Movies and Down-Sized Dance Videos

Former Club president Joyce Hendrix and husband Walt shared their list of favorite dance movies. These include:

- "Shall We Dance"— both the original Japanese version and the American version featuring Richard Gere and Jennifer Lopez
- "Bandwagon" with Cyd Charrise and Gene Kelly dancing in Central Park to "Dancing in the Dark"
- "Take the Lead" with Antonio Banderas
- "Dirty Dancing" (Walt's favorite)

The second female lead in the American version of "Shall We Dance," Lisa Walter, was a friend of the Hendrixes.

Some Club members have enjoyed watching master ballroom dance instructor Egils Smagris, who usually teaches in his very spacious and elegant ballroom, produce crisis-inspired home videos in his tiny, extremely narrow and unassuming sitting room — down-sized dancing!

Search on YouTube for Smagris' "Waltz, Tango, and Slow Fox Basic Steps at Home."

A1 ACTION
NURSING CARE, INC.®
SINCE 1978

*Providing Private Duty Nursing Care...
generation to generation*

(301) 890-7575
3508 Greencastle Road
Burtonsville, MD 20866-1940

A1ActionNursingCare.com

Personal Care Services In The Comfort Of Your Home

Family Owned & Operated
Serving Montgomery County

- Household chores
- Medication reminding
- Daily living and companionship
- Meal planning, preparation and monitoring of eating habits
- Overseeing activities, such as walking, to minimize the risk of accidents
- Shopping for groceries, with or without client
- Bathing and grooming and general personal hygiene
- Help with planning and making decisions
- Nursing services and many more!

Call for a Free Consultation and Assessment • 301.717.2212 • www.bestseniorcare.us

Learning Group Looks for Instructors and Finds Them in its Own Backyard

by Fred Shapiro

During normal times, when residents read articles about the Center for Lifelong Learning's (CLL) programs and classes, do they ever wonder where and how the instructors and presenters were found?

In a number of cases, instructors and presenters are from organizations or contacts outside of Leisure World, but not always. Residents' neighbors, family members and friends are crucial sources that can serve as some of the CLL's best presenters and instructors. The education and professional backgrounds of many make them well-versed and informative.

Past classes presented by such residents as Paul Levy, Tom Conger and David Frager have been well attended. Each of these men has been active in CLL for many years and is well appreci-

ated by his classes' participants.

After restrictions on gatherings have lifted, instructor Howard Sribnick will follow up on a very well received program he presented earlier this year.

Upcoming Program

A good example of a presenter found through a resident's contact is author Leslie K. Barry, daughter of resident Esther Kaplan.

Later this year, Barry will present a program on her novel, based on the story of her maternal great uncle, who was a member of the 1930s secret militia organized by the FBI and the mob.

She called her uncle Harry a "Newark Minuteman," one of the bands of boxers fighting to stop the rise of Nazis in America under mob king Longie Zwillman.

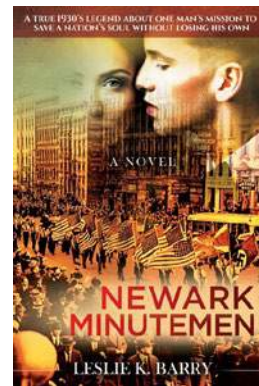
Barry thought this story

unbelievable when she first heard it. Hitler's soldiers were in America before World War II? U.S. students had never learned about this in school. As it turns out, it was all true and is an American story that needed to be told.

Barry is a screenwriter, author and executive producer. Her previous professional work includes executive positions with major entertainment companies including Turner Broadcasting, Hasbro/Parker Brothers, Mattel and Mindscape Video Games.

Contact

So, do you know anyone who can provide an interesting class or one-day program for the benefit of residents?



From left, author Leslie K. Barry, courtesy photo, and the jacket of her new novel

Looking around Leisure World, there may be many who qualify, but they must be identified and encouraged to participate. Being retired should not stop one from being active. If you or someone you know is interested in serving as a CLL instructor or presenter, email (fshapiro@comcast.net).

For information on all CLL classes and presentations, visit (www.cllmd.com).

**THESE DAYS, IT'S
MORE IMPORTANT
THAN EVER
TO BE CONNECTED.**

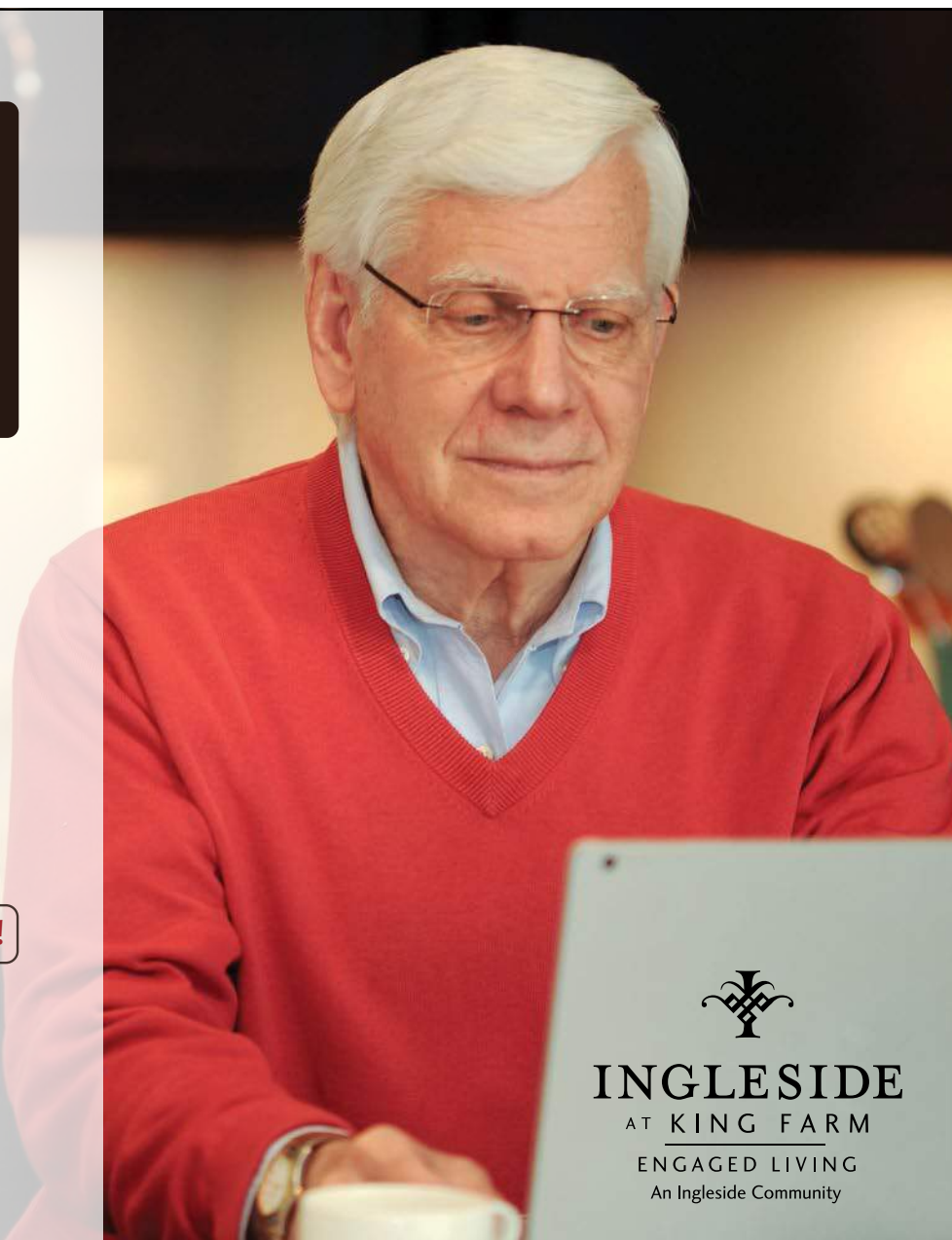
Take advantage of the flexibility and convenience that technology offers to stay in touch and up to date with news and information from *Ingleside at King Farm*. Take a virtual tour of the new *Gardenside* residences, or chat live and ask questions with an *Ingleside* marketing team professional.

SCHEDULE YOUR VIRTUAL SESSION TODAY!

INGLESIDE AT KING FARM
240-398-3846 // www.ikfmd.org



Ingleside at King Farm is a not-for-profit, CARF-accredited, SAGECare-certified, life plan community.




INGLESIDE
AT KING FARM
ENGAGED LIVING
An Ingleside Community

Leisure World Gardeners Undeterred by Recent Spring Chill

by Debbie Royster

The recent cold snap has not “chilled” either the energy or the enthusiasm of the Leisure World gardening community.

Members of the Garden Plots Group are working diligently every day, from the early morning hours until late evening, preparing their gardens and planting early spring crops.

So far, the Garden Plots Group has welcomed quite a few new members, and they have enthusiastically joined their neighbors to ‘play in the dirt’ together! Community gardening is an enjoyable



At left, gardener Anne Bunai surveys her colorful, newly installed garden after a hard day’s work. At right, gardener Don Bonn finishes up his new plantings. Photos by Debbie Royster

and therapeutic form of exercise and a great way to interact with and learn from

our neighbors. And, in the context of today’s COVID-19 pandemic, this treasured

pastime and shared experience is even more important to all of us.

The Garden Plots Group continues to comply with the guidelines issued by the federal government, the State of Maryland and Montgomery County. These guidelines include maintaining physical distance of six feet (“social distancing”) while in the garden. In order to adhere to this guidance, visitors to the garden are prohibited until these orders are lifted. And in accordance with these guidelines, gardeners wear masks while in the gardens.

The Garden Plots Group has continued to meet monthly using Zoom to conduct online video meetings. At the April 15 meeting, more than 35 members participated by Zoom, and they elected Bob Malson as president and Judy Elrod as registrar.

As community gardeners, the objective of the Garden Plots Group is to encourage gardening in Leisure World and to provide individual garden plots to residents who wish to plant vegetables and flowers and enjoy the gardens in peace and harmony with their neighbors.

Although a few garden plots remain available, they are going quickly. If interested in joining the Garden Plots Group, email registrar Judy Elrod at (judyelrod@comcast.net).

Maintain Your Independence HERE'S HOW WE CAN HELP



OUR PERSONALIZED SERVICES INCLUDE:

- Caring Companionship
- Medication Reminders
- Safety Supervision
- Transportation/Errands
- Light Housekeeping
- Memory Care
- Meals and Nutrition
- Bathing/Grooming
- Hospice Support

See what our clients have to say...

bit.ly/homeinsteadreviews • bit.ly/homeinsteadmd



Reliable • Competent • Compassionate

Each Home Instead Senior Care office is independently owned and operated.

301.588.9710 • HomeInstead.com/197 • facebook.com/HomeInsteadSilverSpring



Kathleen Kane
Assoc. Broker

Kathleen and Eileen Kane

Honored to Serve You For 35+ Years with
Cathy Gilmour Real Estate and Proudly Continuing that
Same High Level of Service with WEICHERT REALTORS®



Eileen Kane
Assoc. Broker

We have been so busy! Recent Solds include a **BERKELEY** townhouse located in **Montgomery Mutual** with Florida Room addition, **G Model** in **Fairways South**, 2 Bedrooms & 2 Baths, New Carpeting, fresh paint; **ARBOR** in **The Pines** 1 Bedroom + Den, 1-1/2 baths, Full bath has step in shower.

AVAILABLE RENTALS

WARFIELD -- 2 BR, 2 BA ground floor apartment in Mutual 19B on Elkridge Way, quiet and beautiful with a view of the woods, includes basic cable and internet/wifi. MOVE IN READY. \$1,585/month plus electric.

DARTMOUTH -- Townhouse in Mutual 11, 2 bedrooms, 2 full and 1 half bath, spacious rooms offer both front patio and rear balcony, all new stainless steel kitchen appliances, newer cabinets & counters, includes basic cable, internet/wifi, and utilities (except phone), MOVE IN READY. \$2,085/month.

CABOT -- 3 BR, 2 BA ranch house with attached 2-car garage. Delightful location on Lindsey Lane in Mutual 10, includes basic cable, internet/wifi, and utilities (except phone). MOVE IN READY. \$2,400/month.

Please contact Eileen Kane, 240-460-8647 for more info.

*Dedication Makes
The Difference!*

WEICHERT REALTORS®
Office: 301-681-0550



Kathleen: 240-506-6079 | kathe.e.kane@gmail.com | Eileen: 240-460-8647 | ekkane51@icloud.com

Winning the White House from Home

by Roger Blacklow

On April 14, The Washington Post ran a story with the headline, "President Trump Made 18,000 False or Misleading Claims in 1,170 Days." Let's put an end to this presidency, and do it from home.

Try the following five ideas to become active and defeat the incumbent White House:

- "Vote Forward" is the organization with whom the Club has held its letter-writing parties. Visit (votefwd.org) and follow the website's instructions; those who have already attended a letter-writing party will be familiar with the process. If you encounter a difficulty, send an email to (leisureworlddemclub@gmail.com)
- As soon as restrictions are lifted on gatherings, the Club will have multiple letter-writing parties. Y'all come! The Club will also return to holding exciting programs, which in the past have included Sen. Chris Van Hollen, Rep. Jamie Raskin and other state and county top political figures (including pollsters and famous writers,



- such as CBS's Marvin Kalb)
- Go to (joebiden.com). Stay informed
- Polling got you confused? Wondering about Maryland and Montgomery County politics? Not a member of the Democratic Club? Become a member and start receiving the informative "Donkey Dispatch," free with membership. Send a check for \$15 per person to (Democratic Club of Leisure World, PO Box 12374, Silver Spring, MD 20908). Include your name, address, phone number (optional) and email address (the newsletter is an email).
- Visit the Club's website at (demcluboflw.com)

Renew a Membership

Membership in the Democratic Club lasts from June to June. Members who have not renewed their membership for 2020-21 are asked to do so. See the aforementioned instructions. Memberships made this year are valid until June 2021.

Unsure if you are a member? Email the Club at (leisureworlddemclub@gmail.com).

Federal Workers Serve in Critical Roles During Pandemic

by John Moens

Essential services such as health facilities, grocery stores and police and fire departments continue to operate during the pandemic. But while nearly all such services are hampered by the crisis, there is another service people depend on daily that might be significantly curtailed.

The U.S. Postal Service is an independent agency of the executive branch of the U.S. federal government. It is self-sustaining, financed by those who use it, but the coronavirus has impacted this service.

So far, Congress has not provided federal funds to aid the postal service, so there might be cutbacks in service to rural areas. And the next election may depend on mail service, possibly more than ever before in history.

It's important to note that federal employees such as postal workers continue to serve during the crisis.



Whistleblowers

Also in the news of late, whistleblowers sometimes act to remove federal employees. Views

on whistleblowers range from heroes who put the welfare of their country over career and family, to disloyal partisans. But whatever a person's views on whistleblowers, there might be universal agreement that rooting out corruption and sometimes, saving lives, is a good thing.

Nevertheless, there is pressure from some congressmen and congresswomen to expose and remove whistleblowers. The need for whistleblowers was recognized by the Congress in the bipartisan Whistleblower Protection Act, which passed the Senate in 1989.

PHYSICIAN HOUSE CALLS
AFFORDABLE AND CONVENIENT

Can't get to the doctor or your doctor can't see you right away?
Dr. Kinney will come to you.
He covers Leisure World and surrounding areas.

Medicare is accepted for qualified patients; you pay a small trip fee for your house call. Dr. Kinney does family consults, second opinions, medical testing and evaluations.

Most lab tests, X-rays, EKGs, etc. are performed in the comfort of your home.

MDCM
Metro Direct Care Medical


Stephen L. Kinney, MD
Primary and Urgent Care
Board Certified Family Medicine

Medicinal Marijuana recommendation is now available in Maryland.

For more information:
Call: 202-368-6820 | www.metrodcmed.com

Wills, Wealth Planning & Trusts



Luann Battersby
Leisure World neighbor
3510 Chiswick Ct

Phone: 301-518-0423
Email: Luann_Battersby@comcast.net
Housecall: No charge!
www.battersbylawoffice.com
Simple will:
\$175/person; \$330/couple
Living will/medical directive \$80
Financial power of attorney \$90

Probate: flat fee or hourly, not a percentage of estate.

Estate and tax planning. I also assist clients in other related matters when they need my help.

Taking a Closer Look at the Republican Club

by Fred Seelman

Republican Club members should take advantage of the current suspension of Club meetings and activities by using this time to check that the Club is upholding its by-laws and mission.

The by-laws describe the Club's purpose as "promoting and advancing Republican principles and candidates" and "encouraging voter participation in party affairs."

Through its major activity, holding meetings, the Club plainly meets its "candidates" and "party affairs" responsibilities. Most of its guest speakers are either Republican candidates or Republican Party officials. And the Club president is a former member of the

Montgomery County Republican Central Committee, the local party governing group.

Republican Principles

What are Republican principles? The Club defines them like the Maryland Republican Party does – as those set out in the U.S. Republican platform.

So, how is the Club "promoting and advancing Republican principles"? The Club is asking for help from Leisure World Republicans to answer that question.

Read the principles and their descriptions as outlined at (www.gop.com/platform/restoring-the-american-dream/). They are called:

Rebuilding the Economy and Creating Jobs; Fair and

Simple Taxes for Growth; Our Tax Principles; A Competitive America; Winning Trade Policy; Freeing Financial Markets; Responsible Homeownership and Rental Opportunities; America on the Move; Building the Future: Technology; Building the Future: America's Electric Grid; Start-up Century: Small Business and Entrepreneurship; The Federal Reserve; Workplace Freedom for a 21st Century Workforce; A Federal Workforce Serving the People; and Reducing the Federal Debt.

Do you think the Club is doing a good job promoting and advancing these principles? Send an email to Club president Fred Seelman at (fseelman@gmail.com), and let him know what you think.

More Republican Business

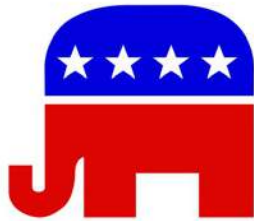
In the April 17 edition, the Club named several alterna-

tive Republican news sources where Club members could get Republican Party news. Here are two more:

- The National Federation of Republican Women (www.nfrw.org/about-nfrw), which has several clubs in Montgomery County
- The Republican Governor's Association (www.rga.org/)

Don't forget to plan to help the Club by working on Election Day, now Tuesday, June 2, at one of Leisure World's three precincts: Clubhouse I, Clubhouse II or The Inter-Faith Chapel.

Send comments or questions about these or any other Club matters and/or offers to volunteer to Club president Fred Seelman at (fseelman@gmail.com) or first vice president Robert Kammer at (301-847-9820).



AUTO BODY

Rockville Central

Just off East Gude Drive

301-424-3500

**FREE ESTIMATES
IF YOU CAN'T COME TO US
WE WILL COME TO YOU**

SPECIAL OFFER

- Paintless Dent Removal from \$75
- Free Pick up & Drop Off
- Free Towing to Shop
- Free Touch Up Paint
- Lifetime Warranty on All Repairs
- Special Discounts for LW Residents

**We Happily Handle All Insurance
Claims for You**

Ask for Richard or Tony

SCHOENBAUER



*Repair, Refinishing, Antique
Restoration & Reupholstery*



301-884-3011 • schoenbauer.com
30507 Potomac Way, Charlotte Hall, MD 20622

NA'AMAT USA Suggests Links for Entertainment and Learning

by Carole Mund

All activities normally sponsored by NA'AMAT RBZ Club are canceled through June.

During this difficult period of social distancing, NA'AMAT USA has shared some sites that may fill its members' time productively. In each case, search for the site and stream from it.

The American Friends Israel Philharmonic has a link to a fabulous concert. The National Council of Jewish Women and the Israeli American Council both offer a variety of classes including lectures and exercise classes. Finally, the Jewish Council of Los Angeles offers a digital cookbook for those who

would love to explore new recipes.

Mission Statement and Donations

At this time, all charitable organizations are experiencing difficulties in fulfilling their missions.

NA'AMAT is a charitable organization dedicated to helping NA'AMAT Israel provide educational daycare programs, vocational training, legal aid for women, services and assistance for new immigrants and centers for the prevention and treatment of domestic violence.

NA'AMAT is proud of its 233 daycare centers that ensure the safety and security of over 17,000 pre-school children that are located

throughout the State of Israel and the 40,000 families that depend on NA'AMAT for social, psychological and economic services.

Donations are needed to continue its dedication to women and children in need. To make a donation, contact Harriet Chaikin at (240-560-7487).

Help Wanted

After 14 years of writing for the Leisure World News, Carole Mund has decided to retire in June 2020. NA'AMAT is eagerly looking for someone to take over the responsibilities.

The newspaper is one of the main vehicles for communication to the Leisure World community.

NA'AMAT's executive board is eager to provide support, so volunteers do not have to be currently active to accept this position. Contact president Linda Schoolnick at (301-681-1076) for more information.

Contact Information

For more information about NA'AMAT RBZ Club, contact co-presidents Linda Schoolnick at (301-681-1076) and Gladys Blank at (301-438-9666).

For membership information, contact Harriet Chaikin at (240-560-7487). For tribute cards, contact Lenore Kalen at (301-922-4348). And for the book club, contact Barbara Tahler at (240-669-6961).

■ Jewish War Veterans Krieger-Loube Post 567

May 3: Brunch Canceled

by Jerome "Jerry" Cohen

Due to the continuing threat of COVID-19 (coronavirus), the Sunday, May 3, brunch has been canceled.

Hopefully, the final spring 2020 Jewish War Veterans brunch scheduled for Sunday, June 7, will take place. The first Wednesday monthly business meetings are canceled until further notice.

Post 567's membership drive is now underway. Special dues pricing for both regular memberships and patron participation are now available.

Take advantage of this opportunity to join and participate in the Post's activities. Enjoy the camaraderie of interacting with your fellow veterans and patrons.


Those who would like additional information, have questions about membership or would like to be added to Post 567's email notification and e-newsletter list should contact Post Commander

Jerry Cohen at (240-970-5024) or (jeromeacohen67@outlook.com).

Men and women of the Jewish faith who served honorably during war or peacetime in any branch of the U.S. military, on active or reserve duty, as national guardsmen, or in the PHSCC or NOAA Corps are eligible to join the Post.

Donations to the Post are welcomed and appreciated. Contributions to the Post's general fund, or in honor of or in memory of someone, will also be mentioned in the Post's monthly electronic newsletter.

Donations should be made payable to "JWV 567" and mailed to Edwin Cohen at (15405 Wentbridge Ct., Silver Spring, MD 20906).



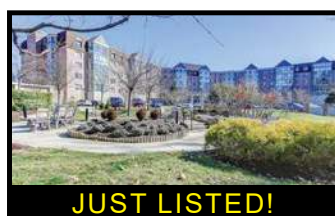
AZI
Master Hair
Stylist

Avalon Salon
Leisure World Plaza

All Services
Cut, Style, Color, Perms,
Highlights, Face Waxing

Mon, Wed, Thurs, Fri & Sat
Call for Appt (301) 598-2000

Experience + Expertise = Results!



JUST LISTED!

2 BR + 2 BA + Den "Q" Model in Creekside. Lovely sunroom with nice view.



We also have pre-qualified buyers looking for a rambler!

If you've thought about selling, this is the BEST TIME for a quick & stress-free sale!
We have serious buyers waiting for you.



Susan Cohen

Top 1%
Direct: 301-651-5923
susiejer@aol.com

Covid-19
Aware and Compliant

Weichert
REALTORS

Office: 301-681-0550

Jody Goren

GRI, SRES
Direct: 301-674-7737
jodygoren@gmail.com



Hadassah Helps Fight the Coronavirus Pandemic in Israel and Across the Globe

by Barbara Eisen

Hadassah is helping to support the treatment of coronavirus patients in Israel. Hadassah Hospital Ein Kerem was chosen by Israel's government as one of the few select hospitals to care for coronavirus patients. The hospital has devoted specific, securely locked areas for treating these patients. Professor Dana Wolf, head of the Clinical Virology Laboratory at Hadassah Hospital Ein Kerem, has started clinical trials for a serum to help seriously ill coronavirus patients. Hadassah International is using its global network to fight COVID-19 across the world. As the coronavirus pandemic moves from one country to the next, the Hadassah Medical Organization is able to use its extensive knowledge, expertise and experience to help those countries that are seeking advice.

Programs and More
On Tuesday, Aug. 18, in Leisure World, Cantor Michael Kravitz is scheduled for one of his special presentations relating to Jews and music. Other programs have been canceled through June.

Elaine Schenberg and Jan Bloom sell Hadassah greeting cards. The prices are \$3 each for one to three cards and \$2.50 each for four or more cards. Call Elaine at (301-598-0079) or Jan at (301-593-7720) to buy cards. They will even send them for you if you add postage costs to the regular fees.

Larelda Gruber, available at (301-598-5922), is chair of Youth Aliyah/Children at Risk. This project helps disadvantaged children in Israel. The goal is to create a circle of \$1,000, made by individual contributions of \$40. Send donations to Larelda at (3200 N. Leisure World Blvd. #201, Silver Spring, MD 20906).

Join Hadassah
Hadassah encourages women of any religion to join Hadassah as an annual or a life member. And it has special associate memberships available to men. If interested in knowing more about Hadassah, contact

one of its membership vice presidents: Lois Fields at (301-585-9804) or (loisfields2@earthlink.net), Linda Epstein at (301-847-9650) or (lepstein8@gmail.com) or Natalie Rosen at (301-279-5640) or (bnrosen@comcast.net).

■ Jewish Residents of Leisure World

JRLW to Hold Mail-in Ballot Election

by Jonas Weiss

Jewish Residents of Leisure World (JRLW) has had to cancel or reschedule activities for the next few months to comply with restrictions on social gatherings caused by the COVID-19 pandemic.

JRLW is planning to have services (in person, or virtual if necessary) for the High Holidays in September. Rabbi David Abramson and Cantor Michael Kravitz would lead the Conservative services and Rabbi Gary Fink and Cantor Wendy Gonzales would

lead the Reform services.

JRLW membership is \$25 for the coming fiscal year or \$45 for a couple. Mail checks, payable to Marsha Bernstein, to (3210 N. Leisure World Blvd., Apt. 921, Silver Spring, MD 20906).

JRLW board of directors' elections will be held by mail, using ballots supplied in the May JRLW newsletter. Mail the completed ballot to Leah Weisman at (3210 N. Leisure World Blvd., Apt. 1016, Silver Spring, MD 20906). Anyone not already nominated but interested in a position should contact Leah at (301-288-4267).



DANCE-WORTHY SAVINGS!

Big Savings

10% OFF UP TO \$250!

off Service or Installation*

- ✓ Award winning
- ✓ Master Gas Fitter certified
- ✓ Master Electrical certified
- ✓ Factory trained
- ✓ EPA certifications
- ✓ NATE certified

www.presidentialheatandair.com/leisure-world-2020

* See website for details.

CALL TODAY 301-517-9023



Doug Brasse
Realtor
An authorized Leisure World Specialist*

Let me introduce you to the Leisure World® Experience

- A friendly 55+ resort community with a "country club feel"
- Amenities include golf course, pools, tennis, hobbies & more
- Named #1 in *Best Value Communities* by 55places.com
- Extensive choices of floor plans; pricing to fit every purse.



See my Zillow 5-Star ratings at dougrasse.com and check out my listings on Facebook.

Thinking of joining the Leisure World community? My expertise and years of experience can help you make the best choice for the best price. Contact me today at 301-448-8708 (cell); 301-681-0550 (office); dbrasse@weichert.com (email).

My results since 2017

44 units SOLD • 31+ Listings • 6 Rentals



*Leisure World® is a registered trademark owned by RRLH, Inc. Doug Brasse is authorized by RRLH, Inc., under license to use the Leisure World® service trademark.

Healthful Thursdays Continue with Online Classes on a Variety of Topics

by Patricia Means

The African American Health Program of the Montgomery County Department of Health and Human Services is continuing the Healthful Thursdays via an online platform during the coronavirus crisis.

The online classes are held each Thursday at 1 p.m. by Drs. Ikenna Myers and Grazzia Nkongolo and nutritionist Robina to ensure the continuity of its services to residents.

Class topics cover major health areas, including diabetes, cancer, hypertension and heart disease and mental health. The classes also include nutrition information with food recipes. Chat sessions will be available, and participants will be contacted to review personal goals and progress made in blood glucose levels, blood pressure measurements and weight management.

The Healthful Thursdays classes are conducted via Zoom, a free online platform. Zoom is accessible using computers, mobile phones and tablets. To attend the classes, download the Zoom app at (zoom.us/download). After installing Zoom, enter meeting ID: 995 851 765. To access classes by mobile phones, use (1-301-715-8592) and enter the meeting ID number.

For additional information, contact Jannifer Woodson,

event chairperson, at (832-259-7063).

LWAAAC Election

Members should receive the slate of candidates for the 2020-2021 election by Monday, May 25. The election is on Thursday, June 25. The election committee will provide members with voting instructions during the first week of June.

General Information

The board of directors, composed of elected officers and standing committee chairpersons, will conduct the business of the organization via teleconferencing

on Wednesday, May 6. The agenda and minutes will be provided to the members after the teleconference.

During social distancing, the Association will provide LWAAAC-related information to members via robocalls, emails and postal service. The quarterly issue of The Drumbeat was distributed in April. Members who did not receive a copy of The Drumbeat may request a copy from the public relations committee at (lwaac2@gmail.com) or Patricia Means at (301-598-0550).

Membership in LWAAAC is open to all residents, and early registration for the

period covering Wednesday, July 1, 2020 through Wednesday, June 30, 2021 is encouraged. Annual dues are \$20 per person (checks only, payable to LWAAAC) and payment should be mailed to (LWAAAC, PO Box 12316, Silver Spring, MD 20908). For additional information, contact Alfonso Holston, membership chairperson, at (301-438-3537).

Members are reminded to notify LWAAAC of illness, disability, death or other situations affecting a member or that person's immediate family by contacting Louise Langley, amenities chairperson, at (301-598-3876).

CALL PHYSICAL PROPERTIES

at 301-598-1500 and ask for

Willson's Showroom

**Kitchen
Bath
Painting
Flooring**

All Interior Renovations

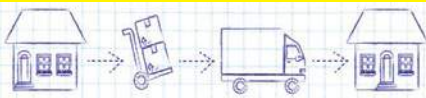
Providing renovation services exclusively
for residents of Leisure World!

WILLSON'S
Leisure World Renovations

Call us directly at
301-598-1348

BEST RATES IN DC

\$80 x Two Men- 2 or 3 Hours Minimum
• Pickups / Deliveries



CONTINENTAL MOVERS

Professional Movers Who Really Care

Owner Operated Since 1982
References - Local & Long Distance
Packing Services - Pianos & Big Objects



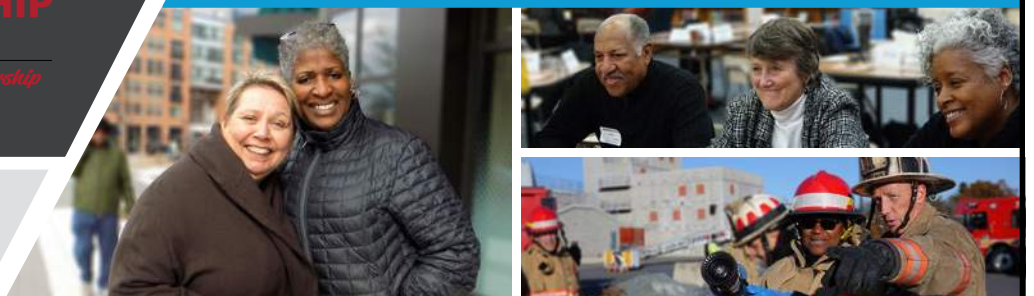
Call for a FREE Quote

202.438.1489 • 301.340.0602
www.continentalmovers.net

LEADERSHIP
MONTGOMERY
A Generation of Leadership

SLM
Senior Leadership
Montgomery

Experiential learning program for adults 55+



Program begins in September

Apply today at: www.leadershipmontgomerymd.org/senior-leadership

Application
deadline
extended!

"Senior Leadership Montgomery has truly been an amazing experience for me! The many different speakers, workshops, and field trips broadened my knowledge about so many things in Montgomery County. My objectives were met beyond my expectations and I made many amazing new friends in the process!"

-Lady Renee Ward Anderson, Leisure World Resident & SLM Class of 2016

Association Offers Audio and Video Programs

by Nalini Kukke

The Friends of India Association (FIA) started in November 2018 to advance and foster a sense of unity and belonging among Indians and those interested in India while promoting Indian arts, science, culture, history, politics and philosophy through a variety of programs, workshops and lectures.

In order to nurture a sense of community and connection during the turbulent COVID-19 pandemic, FIA has reached out to all of its members via email and telephone to ensure everyone's well-being and offer support if needed. Members were deeply appreciative.

Important information about various resources related to health, entertainment, education and physical and emotional well-being is regularly disseminated to the members.

Audio and Video Programs

FIA continues to offer programs online

through audio and video conferencing. Here are some of the programs open to the entire Leisure World community.

- Monthly talks by Swami Chidbrahmananda from the Vedanta Center, Washington, D.C.
When: First Thursdays of the month from 4-5 p.m.
Topic: The Conjunction of Art and Spirit
Join via Zoom at: (<https://us04web.zoom.us/j/472188664>). Meeting ID: 472 188 664
- Monthly Short Story Discussions – Share your talents, specialties and knowledge
When: Second Thursdays of the month from 5-6 p.m.
Join via Zoom at: (<https://us02web.zoom.us/j/2755377417>). Meeting ID: 275 537 7417

- Monthly programs from non-Leisure World residents
Topic: music, stand-up comedy, health talks, lectures and more
When: Third and fourth Thursdays of the month from 5-6 p.m.
Join via Zoom at: (<https://us02web.zoom.us/j/2755377417>). Meeting ID: 275 537 7417



Meditation

Every Tuesday, Dr. Nair from the Chinmayananda Mission holds meditation sessions via conference call from 6:55-8 p.m.

Kindly join in before 6:55 p.m. by dialing the toll-free number (1-605-313-5848). The access code is 747399. Please do not announce yourself after 6:55 p.m., and make sure to mute your device.

For questions, call Kavita Kapur at (301-821-0074) or Nalini Kukke at (301-646-2440). Be safe and be healthy.

■ Rossmoor Women's Club

Rossmoor Women's Club Chaplain Offers Inspiration

by Marcia L. Elbrand

Susan Eisenhour, a recently retired Montgomery County teacher who currently serves as the Rossmoor Women's Club's (RWC) chaplain, usually offers a meditation near the start of the Club's monthly board meetings.

"Our President, Abigail Murton, suggested that a short, non-denominational invocation – acceptable to members of any faith – would help us stay focused on the reasons we do fundraising," Eisenhour noted. "Our mission is to support nearly a dozen local charities,

and there is something 'spiritual' about that," she added.

Reflecting on the current stay-at-home situation, and the necessary precautions everyone is taking, she wrote:

When this is over
may we find
that we are more like the people
that God calls us to be.
We are truly
"one nation under God"
that we have pledged to be,
More like the neighbors we need to be,
Better than the people we'd dreamed

we'd be.

Because we've seen the worst,
we can strive for the best.


In a recent phone interview, Eisenhour said she had attended Olney Baptist Church and had taught bible school in the past. Realizing that the membership of the RWC includes individuals of many different faiths, she noted that when she prepares her monthly meditations, she is always careful to be respectful of "different paths to God."

"What I truly love about this group," she said, "is that we are doing so much to help families of wounded military, as well as women and children fleeing homes with domestic violence, and our own neighbors experiencing health and financial setbacks," she said, adding "When we give college scholarships to deserving young women, we are helping them become self-sufficient adults."


Membership Renewals Welcome

Membership in the RWC is open both to residents and women living in nearby communities. Dues are \$40 per year, and checks may be mailed to Aggie Eastham, membership chair, at (3100 N. Leisure World Blvd., Apt. 126, Silver Spring, MD 20906).

Annually, the Club contributes to Montgomery Hospice, and, at Leisure World, to Fireside Forum and FISH. It also provides books, transportation for field trips and "holiday break" bags of nutritious groceries to the pre-kindergarten Head Start class at Harmony Hills Elementary School.



That Bed & Breakfast in Olney



The perfect spot for

- Friends weekends
- Family reunions
- Out of town visitors
- Milestone celebrations
- History buffs

Visitors welcome! Come and see where FDR slept and Churchill smoked his cigars. (No smoking anymore though 😊). Just one mile from Georgia Ave and 108, RowanLark is the only place to stay in Olney and the *closest lodging to Leisure World*. Rooms start at \$125, Carriage House starts at \$250. Weekends and holidays higher. Weekly rates are available.

Good accessibility, mellow dogs accepted in the Carriage House, family-friendly. Large rooms, private baths, Queen and King sized beds, cots for kids. Hot tub, pool, cable, wi-fi, breakfast included. Guests may invite 2 local friends or family members to share breakfast with advance notice.

Call 301-537-8298 or book on-line at www.RowanLark.com
11 Shallow Brook Court
Olney, MD, 20832

Club Shares Online Travel and Game Options to Try at Home

by Elizabeth Brooks-Evans

The goal of the Going It Alone Club (GIAC) is to enhance the social and emotional well-being of its members with games, fellowship opportunities and exciting trips.

Although it's a singles club, all residents, whether married or single, are welcome to participate in scheduled trips. Married residents whose spouses are incapacitated can also join and participate in all GIAC activities.

Under normal circumstances, GIAC meets every Saturday (known as Saturday Afternoon Live - SAL!) beginning with armchair travel at 2 p.m. in Clubhouse II followed by games at 2:30 p.m. While Club members cannot currently meet together at the clubhouse, here are a few online travel and game

resources that can be accessed at home.

Armchair Travel

To 'visit' Europe with well-known tour guide Rick Steves, go online to (www.YouTube.com) and enter Rick Steves in the search bar. The site includes choices of video trips to Scotland, Wales, Munich, France, England, Italy and more.

Residents who own a county library card can enter (www.MontgomeryCountyMD.gov/library) into their browser's address bar, sign in and then click "Overdrive," where they can choose e-books and/or audio-books on travel to various places. They can also sign up for a library card at this site.

To see the beauty of National Parks, visit (<http://bit.ly/NatParkTour>) for several interesting choices.

To virtually tour famous museums around the world, such as the Van Gogh Museum in Amsterdam, Mexico's National Museum, the National Gallery of Art in Washington, D.C., the Guggenheim Museum in New York, the British Museum and others, visit (<http://bit.ly/EuropeanMuseum>).

Games

Go to your cell phone or digital tablet's App Store and search for "games" to find a selection to choose from. Many are free.

AARP features a collection of senior online games such as mah-jongg, solitaire, words and arcade at (games.aarp.org).

Mo Williams, author and artist in residence at the Kennedy Center, offers "Doodle Videos" at 1 p.m. every day. To access these

videos, visit (<http://bit.ly/2LunchDoodles>).

Trips

All GIAC motor coach trips are canceled at this time. However, the Club looks forward to presenting exciting adventures when it has been declared safe to venture out again.

Membership

Sign-ups for membership have been suspended until further notice.

Meanwhile, members who are able to find various ways to stay connected and find enjoyment with one another or alone at home are invited to share their positive experiences with GIAC's president, Elaine Strass, by writing to her at (P.O. Box 12024, Silver Spring, MD 20908) or emailing her at (Elaine.strass@yahoo.com).

GIAC may share your missive with others.



Sunil Dasgupta

Board of Education

Dear Leisure World Residents,

I am a parent of three MCPS students, a PTA leader who has advocated for improved mental health support in schools, and a university professor who works with mainly MCPS graduates.

I am running for the at-large seat on the Board of Education to advocate for fully funding our schools, spending every dollar wisely, ensuring equal access for all, investing in teachers and staff, and reducing the opportunity gap. To achieve these goals at a time of mounting challenges, we need school board members who can make tough choices and bring the county together to defend public education.

I am ready to lead, and I humbly ask for your support.

Dr. Sunil Dasgupta

County Council President Sidney Katz says:



"I am very proud to endorse my friend, Sunil Dasgupta, for the at-large seat on the Board of Education.

I know Sunil from his work on the Annual Mental Health and Wellness Forum. Sunil has created an event that the county sorely needs."

Who is supporting Sunil?



Councilmember Hans Riemer

Vote by mail by June 2

Learn more at www.sunildasgupta.com

Paid for by Friends 4 Sunil Dasgupta, Crystal Calarusse, Treasurer

Some Walks Canceled While Others Continue as Boomers Maintain Social Distance

by Beth Leanza

Keeping with social distancing guidelines, Baby Boomer Club activities (aside from most walks) remain canceled until further notice. Members should watch their email inbox for updates.

Friday Hikes with Joyce

Anyone can join the Baby Boomer Club on its walks; they don't need to be a member of the Club. Friday walks with Joyce are on a temporary hiatus.

Check the calendar on the Baby Boomer Club's website at (<https://sites.google.com/site/bbclwmd>) for updates, or contact Joyce Richardson at (301-598-7098) or (777cheekie333@gmail.com).

The group normally meets at a local trail. Most walk about three miles, but some walk halfway and return.

To get directions to walk sites, go to the Calendar on the Baby Boomer website at (<https://sites.google.com/site/bbclwmd/calendar>), or use Google Maps.

Sunday Morning Walks

For a longer walk, about three miles, around the Leisure World Boulevard loop, meet up on Sundays at 8:30 a.m. at Arden Court (across from Kelmscot Drive).

Because of COVID-19, the group can no longer move to the Fitness Center on rainy days. Walkers are encouraged to continue their walking routine indoors when the weather is bad. Contact Ted Michos at (Tedmichos@gmail.com) for more information.

Weeknight Walks

For a shorter walk (about one mile), join a group that walks the Broadwalk in Montgomery

Mutual. The walkers meet each weeknight at 7:15 p.m. in the Clubhouse I lobby. No one makes an announcement, so look around and introduce yourself!

AVA Walks

One of the Club's members belongs to the American Volkssport Association and posts its walk information on the Club's website. Visit (<https://sites.google.com/site/bbclwmd>) and click on Subpages (1): Walks, (below the Boomer Events Calendar).

Join or Renew

Any active, fun-loving resident can join the Club, which meets throughout the year to play board games, watch movies and performances and have dinners and picnics.

Those ready to join the Club can send a check, payable to Baby Boomer Club, to membership chair Susan

Landesberg at (3505 Twin Branches Ct., 37-C, Silver Spring, MD 20906). The dues are \$5 per member.

Be sure to include your email address, as the Club communicates mostly by email. The Club can also get members signed into its Google Group. Current members who wish to renew can also send a check to Susan. She has the 2020 member cards for people who were members in 2019.

Residents who are unsure they want to join can attend a Club activity first when they resume. The Club's website is available at (<https://sites.google.com/site/bbclwmd>) and includes a calendar with activity information.

Have you joined but aren't receiving emails? Contact Beth Leanza at (bethlea12020@gmail.com) or (301-598-4569).



Ask for the
**LEISURE
WORLD
PACKAGE**
and receive a free gift
301.296.6864

Pre-Paid arrangements available

Just a Simple Graveside Funeral <small>(Winston 20 Gauge casket included)</small> \$3595	Just a Simple Cremation \$1595
--	---

Other Package Plans Available



www.valuechoicebrand.com
1091 Rockville Pike | Rockville, MD 20852 | Email: info@valuechoicebrand.com
Operating out of Sagel Bloomfield Danzansky Goldberg Funeral Care, Inc. Rockville, MD

Rediscover Our Assisted Living

For almost two decades, Marian Assisted Living has provided focused, personalized senior care. And our award-winning community continues with this mission. Nestled in the heart of the vibrant Brookeville neighborhood of the Reserves at Manor Oaks, we're here for today's needs and tomorrow's. **Learn more, call or visit us today.**

New Neighbors. Same Neighborhood.



Marian Assisted Living
Minutes from Leisure World
19109 Georgia Avenue
Olney/Brookeville
301-570-3190



Victory Housing
Is A Non-Profit
Organization
Serving Seniors
for More Than
30 Years



**Exclusive
Leisure World
Special!**

VictoryHousing.org

Wisdom from an Ageless Generation

by John Moens

The Writers of Leisure World has temporarily paused its meetings, but not its love of the written word, shared and transformed by the magic of language. With its affection for writing, the Group presents excerpts from its book, "Lessons of Life: Wisdom from an Ageless Generation," published last year.

Each of the 15 authors from diverse backgrounds contributed a chapter covering the joys, sorrows and mysteries of life that provoke emotions ranging from laughter to tears. Personal biographies of life-changing events include times of war and peace, death and birth and crisis and redemption.

Poems and essays provide first-person accounts of prejudice, autism, AIDS and the struggle for the equality of the sexes. In stark contrast are inspiring stories exposing the love of people from different cultures across the U.S., South America, India and Asia.

Inside the Book

Denise Barker worked in libraries and wrote for local newspapers. She traveled as far west as Colorado, but the last of her five poems takes the reader no further than "The Stoop" of her childhood home, a very special place in her Bronx neighborhood.

Marion Bedell lived not far away as a child, in Brooklyn. She wrote the chapter entitled, "A Student for Life." At 43, she boldly took a path few women or men take at that age: the college entrance exam. Her 19-year-old encouraged her by saying, "It's not as if your life's work depends on you being accepted."

Hopefully, Verna Denny had a more pleasant flight than her arrival in Barcelona, Spain. She and her husband completed the journey at the hotel, as described in "75 Steps." With no other rooms available in the city because of a soccer match, her 72-year-old husband hauled a large suitcase up the stairs – one step for every year of life plus

three. Her husband observed, "It's nice being considered healthy and young and capable."

Anne Rinn contributed both poetry and prose. She recalled a heart-rending experience she had when she encouraged her autistic eight-year-old grandson to say "yes" if he wanted some ice cream. After she tried a couple of times without success, she felt a tiny hand on her arm. It was her four-year-old granddaughter. "Granma, Matija wants some ice cream. He says Yes," she said.

Viola Stendardi contributed "David," a personal essay of a very special person in her life. David encouraged her artistic talent. She looked on him not only as her cousin, but as a brother to all, ready to share his knowledge and appreciation of art and music. He passed away too soon.

The book is available in the Clubhouse I library (when reopened) and online at (Amazon.com) in both paperback and eBook formats.

General Information

After the outbreak subsides, the Writers of Leisure World will meet on the first and third Thursday of each month in Clubhouse I. All residents are welcome to attend.

The Club hopes more residents will join to read their work. The Club enjoys all levels of writing and continues to compile essays and poems for its next book.



O'CONNOR'S
PAINTING SERVICE, INC.
FREE ESTIMATES
301-963-4226

Over 30 Years Experience
Interior/Exterior Painting
Residential Homes – Condos
Wallpaper Removal
Carpentry Power - Washing
Ask about our Senior Discount

FLOORMAX

**YOUR FLOORING
PROFESSIONALS
SINCE 1985**

Exclusively at FLOORMAX
PERGO EXTREME

Kid-proof! Pet-proof! Water-proof!

On sale starting at

\$999*

INSTALLED

any kitchen, family room or
active room up to 10'x12'

(*See store for details and selection.)

FREE

- In-home consultation
- Pad upgrade
- Standard furniture moving

WEAR-DATED

**Whole House of Incredibly
Soft & Durable Nylon Carpet**

Starting at

\$1999*

INSTALLED

(Includes **FREE** delivery and pad.)

Up to 800 sq. ft.

(*See store for details and selection.)



Aspen Hill Center

13629 Connecticut Ave.

(301) 460-4100

WWW.FLOORMAXFLOORS.COM

GUARANTEE

110%
FLOORMAX

*See store for details

\$250 OFF!

***Any Purchase of \$3000 or More!**

*Limited time only, cannot be combined with any other offer. Must be presented at time of purchase.

**Carpet | Hardwood | Ceramic |
Laminate | Vinyl**

COVID-19 Doesn't Stop Jokesters from Joking Online and by Phone

by Al Karr

Plagued by cabin fever, a few hardy members of the Comedy and Humor Club aren't allowing the coronavirus to prevent them from meeting to exchange jokes.

Seven club members met online or by phone recently to offer readers a presumptive lineup of the jokes they might tell had they been able to hold an in-person meeting in Clubhouse II. That's where the Club ordinarily meets, every Tuesday at 1:30 p.m.

But right now, the Club wouldn't touch that kind of meeting with a six-foot pole, in the words of the Wally and Ruth Becker, a well-known comedy troupe whose members deliver their jokes in unison.

Besides the Beckers, those striding to the computer or telephone were treasurer Herb Hodes, vice president Skip Schoening, Jerry Udell, Susan Dawson and Al Karr. Here are some examples of the funnies they volunteered:

- Herb – I don't mean to brag, but I finished my 14-day diet

food supply in three hours and 20 minutes.

- Kids today don't know how easy they have it. When I was young, I had to walk nine feet through shag carpet to change the TV channel.

- I may not be funny or athletic or good looking or smart or talented...I forget where I was going with this.

- Susan – John Travolta was hospitalized for suspected COVID-19, but doctors confirm that it was only "Saturday night fever" and assure us that he is "Staying Alive."

- The same guy has robbed the same bank three times in the last 30 days. The FBI asks the nervous bank teller if he noticed anything unusual about the robber. "Yes," the teller replies, "Each time he comes into the bank he's better dressed."

- Jerry – It's the fifth time John was caught for committing the same medical fraud – he was arrested for selling a pill that guaranteed longer life. He'd been arrested before, in 1794, 1856, 1928 and 1983.

- Wise advice from T. Boone Pickens, a millionaire businessman: Work eight hours, sleep eight hours. Just make sure they're not the same eight hours.

- The Beckers – Does anyone know if we can take showers yet, or should we just keep washing our hands?

- I swear my fridge just asked me, "What the heck do you want now?"

- Skip – Telltale signs I'm getting old: My knees buckle, but the belt won't. I party and the neighbors don't even know it.

DEFYD
HEALTHCARE SERVICES



BBB RATED A+
410-262-1228
defydhealthcareservices.com
301-328-2307



Check out my 5 star reviews on zillow.com and google.com

Homes are still selling in Leisure World!

While taking many extra precautions during COVID-19, homes are still selling. Call me if you need to sell now.

I can help you navigate throughout the selling process during this most challenging time.

Phone 240-506-2434



ACTIVE
Villa Cortese 1,633 sf
3 BR, 2.5 BA, Garage
List \$399,900



CONTRACT
Vantage East 1,035 sf
2 BR, 2 BA, Updated
List \$224,500



CONTRACT
Prince Frederick
1,550 sf, 3 BR, 2 BA.
List \$393,000



JUST SOLD
Beaverbrook Ct. 1,043 sf
2 BR, 2 BA, Updated
Sold \$170,000

Steps to Selling Your Leisure World Home During the COVID-19 Pandemic



1 Video or Phone Consultations



2 Secure Electronic Document Signing



3 Virtual Showings & Home Tours for Buyers



4 Flexible Showing Options for Agents



5 Minimized Client Contact



6 Private or Remote Settlements



Barbara Michaluk | Weichert

Phone Direct 240-506-2434 (o) 301-681-0550

www.BarbaraSellsMDhomes.com / Email: michaluk@verizon.net

Authorized Leisure World® Specialist / E-Pro® Certified Senior Real Estate Specialist® / Certified Staging Agent® Internet Marketing Specialist® / Relocation Specialist®



It Pays to Work with an Authorized Leisure World® Specialist

Clubs, Groups & Organizations In Brief

Several clubs, groups and organizations have canceled or postponed their meetings and events due to COVID-19 (coronavirus). To check on the status of an event or meeting, watch channel 972 or contact the club, group or organization directly.

Amateur Radio Club: Calling all hams! All resident amateur radio operators (hams)—or would-be operators—are invited to join our business meeting/lunch the second Tuesday of each month. Members meet in the Stein Room in Clubhouse I at noon. For more information or to learn about amateur radio, call Bryan West at (301-598-0137).

Book Club Network: The network is a collection of book discussion groups of eight to 12 members each, providing a forum for residents to get together with other avid readers to read and discuss their favorite books. Members meet monthly to talk about a specific work chosen by their club. For further information, contact Verna Denny at (301-598-1418) or (verhd@msn.com).

Clipper Workshop: Members assemble clown hand puppets for Holy Cross Hospital. They are used in the pediatric and emergency rooms. No special skills are needed. Some sewing skills are necessary. Bring a bag lunch. (We will eat in the lunchroom.) Members meet every first and third Monday in Clubhouse II from 10 a.m.-2 p.m., or any portion of the time you can devote to making a child smile. Donations of cotton fabrics, stuffing, thread and iron-on facing are appreciated. Contact Joan Mahoney at (240-833-2724) for further information.

Computer Learning Center: Located in Clubhouse II, the Computer Learning Center is operated by The Leisure World Computer Center Inc., a 501(c)(3) non-profit organization. The all-volunteer staff comprises a board of directors, computer room monitors and other volunteers. The center provides residents free training and assistance in the day-to-day use of computers for online research and other personal needs. The center has Mac and Windows systems computers as well as color laser printers for printing and scanning. For more information about the Computer Learning Center, please visit (www.computerctr.org) or contact the E&R office in Clubhouse II at (301-598-1320).

Hispanos de Leisure World: All Hispano-Parlantes residents are invited to join the club in enjoying its activities, including card games and conversations, every Friday at 3 p.m. in Clubhouse I. Once a month, Latin-American and Hispanic movies, with English subtitles, are screened. The club organizes a Fiesta de La Amistad on a weekend in the spring and a Christmas dinner in December. The club has also presented musical shows in the Clubhouse II auditorium as well. If interested, contact Maria Blanco, club president, at (301-847-9066) or Carlota "Loty" Goldenberg at (301-598-6869).

Interfaith Committee for the Homeless and Working Poor: The focus of this committee is to provide opportunities for Leisure World residents to work together to solve some of the problems experienced by homeless and working poor individuals and families in Montgomery County. This coalition is comprised of representatives from the Inter-Faith Chapel, Jewish Residents of Leisure World, Our Lady of Grace Catholic Church, the Unitarian Universalists of Leisure World and the community at-large. If you would like information about participation in ongoing projects of this committee, contact Gwen Raphael at (301-348-8814) or (graphael@verizon.net).

Knitting Corner: Join us the second and fourth Fridays of each month at The Inter-Faith Chapel from 10 a.m.-noon. Our next meeting is to be determined. Bring your knitting and enjoy the conversations. We have patterns and yarn for the Chapel's mission. Yarn donations gratefully accepted. Call Joan at (240-833-2724) if you have any questions.

The Lapidary Shop: Our well-equipped Lapidary Shop is available to all residents who join the Lapidary Club and take training on the use of the shop's equipment. Shop steward Mark Parker oversees training and is usually in the shop on Monday afternoons after 2 p.m. To arrange for training, contact Mark at (240-723-5860), or drop by the shop in Clubhouse II on a Monday afternoon to talk to Mark

and see the shop. For those who have received training, the shop is available whenever the Clubhouse II E&R office is open. Get trained and make cabochons. Get involved and make friends.

LW LGBTQ Alliance: The group was formed to give members of the LGBTQ community a safe and inviting place to come and meet new friends and to get involved in social activities. Our meetings are the third Saturday of every month at noon in Clubhouse II, except in July and August. We welcome everyone; being gay is not a prerequisite. The LW LGBTQ Alliance strives to provide events and activities to develop strong relationships through education, interaction and fun within our group and with the entire Leisure World community. For additional information and events, email us at (lwlgbt@gmail.com). You can also follow us on Facebook at LW LGBT Alliance.

Model Railroad Club: If you have ever had an interest in model trains, the three layouts in the basement of Clubhouse II offer just about anything you could ask for. The largest layout, in HO, features scale miles of track, yards and industries, and supports the simulated operation of real railroads delivering passengers and goods from source to final destination. Visit Club members on Mondays and Wednesdays from 5:30-7 p.m. and Thursdays from 2-4 p.m. in the basement of Clubhouse II, or join members for the monthly business meeting on the second Thursday of the month at 4 p.m. in Clubhouse II. For more information, call Marilyn Chmielewski, president, at (301-438-3259).

Musical Jammers: We gather informally twice a month with other amateur musicians, singers and lovers of music to sing, play music and have fun – no dues, no meetings, no agendas, no commitments. We meet on the second and fourth Mondays of every month at 10 a.m. in Clubhouse II. All instruments and voices are welcome. You bring it; we'll sing it. Questions? Call Richard Lederman at (301-598-1132).

Nextdoor.com: A friendly place online to share tips and meet neighbors. The Group already has a record of success helping to make Leisure World even better. Free. Please join the 1,200 plus members. Go to (www.nextdoor.com/join) and enter the code QHMXCF.

The Philadelphians: For further information about the Philadelphians and their events, contact Steve Kane at (301-598-2330) or (kanens@verizon.net).

The Pittsburghers: If you were born, raised or lived in Pittsburgh and/or the Greater Pittsburgh area, you are welcome to join this Group. For more information, call Tania Iwanowski at (301-598-2278) or email (Tania.Iwanowski@yahoo.com).

Quilting Group: Come and join this fun group as members work on individual projects. The Group now includes those interested in all needlework and knitting. Members meet the second and fourth Thursdays in the Clubhouse II multipurpose room at 9:30 a.m. If you have any questions, call Clydis Kellough at (301-642-2430). The next meeting is to be determined.

Stitchers Group: Needlepoint, cross-stitch and more. If you enjoy stitching or would like to learn, members meet every first and third Thursday from 10 a.m.-noon in the Clubhouse II multipurpose room. Come and share your finished work and enjoy stitching with others while members learn new skills together. Call Audrey at (301-598-4903).

Short Story Group: The Group reads from a collection of short stories and discusses them together. When the COVID-19 pandemic has abated and meetings resume, the Group will read from "The Oxford Book of English Short Stories" edited by A. S. Byatt. A new schedule will be provided. The Short Story Group meets on the first and third Wednesdays of the month at 11 a.m. in Clubhouse I. For information about the group or ordering the next anthology, call Beth Leanza at (301-598-4569).

Stamp and Coin Club: Are you a philatelist or a numismatic? Join the Stamp and Coin Club. Members meet on the first Thursday of each month at 3 p.m. in Clubhouse I. They discuss their collections, including first day covers, day of issue programs, yearbooks,

► to page 36

Clubs, Groups & Organizations In Brief (cont.'d)

coins, medals and more. Stamps are shared for "show-and-tell," and members hold an auction of their stamps. A gift certificate is awarded as a door prize at each meeting. All residents and non-residents are welcome to attend. Annual dues are \$5. If interested, contact Rita Mastorocco at (301-814-9196).

Town Meeting Organization: TMO is a movement of residents concerned about governance and management. The Group meets every month to organize, discuss and conduct resident town hall meetings. Topics such as the proposed administration building, community governance, management and its involvement in mutual elections, and funding a strategic plan will be addressed. TMO meets the third Friday of each month at 2 p.m. in the Clubhouse I. All residents are invited to attend and become active in the movement. For information email (admin@townmeetingorganization.com) or visit (www.townmeetingorganization.com).

Wood Shop: The wood shop is located on the lower level of Clubhouse I; the entrance to the shop is off Gleneagles Drive. It is open Monday through Friday, 9 a.m.-3 p.m. and Saturday 9 a.m.-noon. An experienced monitor is on duty when the shop is open to assist members with their work and provide instructions in the use of shop equipment. Members are often willing to repair and refinish projects for Leisure World residents. For further information, call (301-598-1308). Note: The wood shop is closed until further notice.

Women in the Military: Are you a female who has served in the armed forces? Join members as they shine a light on the role that women play in serving our country. Members also strive to promote awareness of the Women's Memorial at Arlington National Cemetery. The Group meets every second Wednesday of the month at 10 a.m. in the Terrace Room. Call Barbara Long at (301-438-3427) for more information.

Leisure World Club Trips

The next deadline for trip submissions is **Monday, May 4**. Leisure World Club Trips are sponsored by Leisure World groups and organizations and not by Eyre Leisure World Travel. These trips are **open to all residents**, not only members of the specific club. For information, contact the person listed with each trip. (Do not contact the Eyre Leisure World Travel or E&R office.) Leisure World clubs and organizations that want to be included in this column must provide a submission to the News by 3 p.m. on the Monday deadline. Due to space limitations, the Leisure World News reserves the right to edit or delete submissions. Email your trip information to lwnews@lwmc.com.

Please Note: Member/Non-Member pricing is at the discretion of the individual clubs.

Attention, Travelers!

All Leisure World travelers please note that no group on travel can park more than 12 vehicles overnight/long-term in the Clubhouse II parking lot. Also, parking overnight/long-term is at the owner's own risk.



Janice Fife

Stan Moffson
Referral Agent



Weichert REALTORS

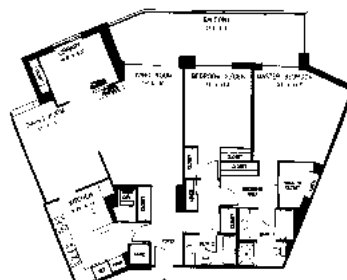
The Changing Face of LW Sales



"S" Model - Turnberry - \$275,000
2 BR, 2 FB, 1,314 sq. ft.



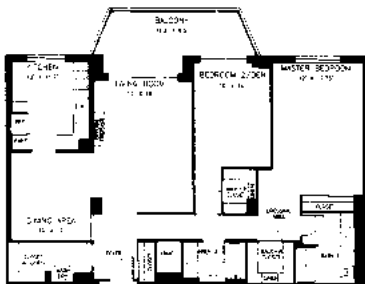
"J" Model - Vantage Point \$349,900
3 BR, 2 BA, 1540 sq. ft.



"K" Model - The Overlook - \$440,000
2 BR, den, 2 FB, 1520 sq. ft. garage space.

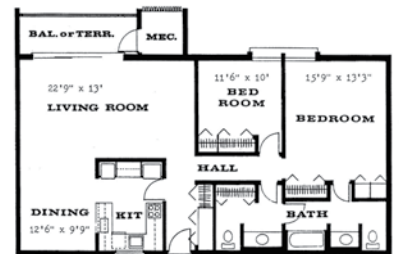


"C" Model - Turnberry - \$249,500
2 BR, 2 FB, 1095 sq. ft. Garage space included.



"F" Model - Vantage East \$275,000
2 BR, 2 FB, 1315 sq. ft.

"Life is not measured by the breaths you take, but by the moments that take your breath away."



COMING SOON
Elizabeth Coop - \$135,000
2 BR, 1.5 BA, 1308 sq. ft.

Call 301-254-5825 and ASK for Janice! When Experience Counts, She Will Get the Job Done!

Email: janicefife46@gmail.com Office: 301-681-0550



LEISURE WORLD

HAS SO MANY WAYS TO KEEP UP WITH COMMUNITY NEWS AND EVENTS:



Leisure World News

- Community News
- Calendar of Events
- Calendar of Meetings



Resident Website (residents.lwmc.com)

- Community News
- Community Calendar
- News Alerts



Community Email

- available upon sign up to (residents.lwmc.com)



Recorded Daily Events (301-598-1313)

Mobile Access to (residents.lwmc.com)

Social Media

- Twitter | @LeisureWorldMd
- Facebook | Leisure World of Maryland



TV Channels

- 972 - Daily Events and Announcements
- 974 - Weekly Events and Meeting Broadcasts

SPORTS, GAMES & Scoreboards

■ Pickleball Club

Pickleballers Socialize at a Safe Distance

by Dee Berkholtz

Pickleball has become so popular in recent years because it offers fun, exercise and socialization.

Members of the Pickleball Club have been sorely missing the fun and the exercise they received from this favored activity. They have, in many cases, tried to fill the exercise void with walks and bike rides around our beautiful community.

Some are joining online exercise classes and others have taken advantage of the video fitness trainer Sam Ellis recorded, which can be viewed on TV channel 974 at quarter past the hour from 7:15 a.m.-5:15 p.m. every day.

Fun seems to be an important element missing from almost everyone's days

as the current restrictions have eliminated daily games of bridge, mah-jongg, pool, ping-pong, golf, pickleball and other activities from the lives of residents.

However, through the use of technology, Pickleball Club members and many residents have been able to continue to socialize while maintaining the required physical separation as mandated by Maryland law.

Video conferencing with friends and family members throughout the country has helped many residents deal with the loneliness that could have resulted from the governor's stay-at-home order.

The friendships developed while playing pickleball have helped a number of members remain in contact with one another while remaining



A group of Pickleball Club members keep in touch by sending texts and occasionally joining Zoom virtual happy hours. Photo by Bob Schultz

physically distanced. Occasional "virtual happy hours" enable groups of friends to share each other's experiences and suggestions of free entertainment available online or through Comcast Xfinity.

Club members look forward to the time they will be allowed back on to the

pickleball courts. Once that occurs, there will most likely be restrictions on how, when and how many players will be allowed at one time.

Regardless, just getting some time back on the courts will help Club members feel a much-needed sense of normalcy.

UNDER CONTRACT!



3500 Forest Edge Drive, #15-1D

Beautifully remodeled first floor 2 BR, 2 FB condo w/a southern exposure. Glass enclosed patio w/ lovely view of green space & garden. Totally renovated spacious kitchen. All new vanities, corian countertops & light fixtures. Covered parking space w/extra storage.

Even during these difficult times, homes in this community are still selling quickly. Inventory is low and many buyers are still looking to buy. If you're thinking about selling, call me!



MARILYN GREGGS

Direct: 301.908.8838 Weichert
Office: 301.681.0550 REALTORS
Email: marilyngreggs1@gmail.com
www.marilynopensdoors.com

■ Scrabble Group of Leisure World

Scrabblers Look Forward to Clubhouse II Return

by Radha Pillai

Until COVID-19 scared the Scrabble Group out of Clubhouse II, enthusiasts would play the game on Tuesdays from approximately noon until whenever each table of players decided to quit. Groups of people playing until 6 or 7 p.m. was not uncommon.

Currently some of the players are online playing "Words with Friends" with each other.

All members are patiently waiting for COVID-19 to free them so that they can resume their routine of playing Scrabble. Please stay connected with one another; the Group will be back together as soon as it can.

Scrabblers are a very friendly group. The Group has several Super Scrabble boards and several traditional or regular boards.

Any resident interested in joining the Scrabble Group may call Arlyne Liebrand at (301-438-7442) and leave a message, or email her at (liebrandab@yahoo.com).

Join us and be ready for a grand re-opening, hopefully soon.



Sports, Games & Scoreboards In Brief

Several sports and games have been canceled or postponed due to COVID-19 (coronavirus). To check on the status of a sport or game, watch channel 972 or contact the sport or game leader directly.

Bid Whist: Do you know what Sport the Kitty, Boston Time and Rise and Fly all mean? If you like to play Bid Whist, then meet us on Mondays at 6 p.m. in the Clubhouse II Multi-purpose Room. Questions: Call Jessie at (314-374-4501).

Bridge:

• **Tuesday and Friday Duplicate Bridge** games are at 7 p.m. in Clubhouse I. New players with partners are welcome. Hand records and results are available after the game on (thecomongame.com). If in need of a partner, call Shirley Light at (301-598-6611) at least 24 hours before the game. Questions? Call Aaron Navarro at (301-598-3870). Note: games have been postponed until further notice.

• The **Wednesday Night Chicago Bridge Group** is looking for new members. The group meets every Wednesday in Clubhouse I. Play begins promptly at 6:45 p.m. Bring a partner and be ready for a few hours of friendly games. Questions? Call Doug at (301-448-8708). Note: games have been postponed until further notice.

• **Men's Bridge** seeks players. The group meets Mondays and Thursdays at 12:30 p.m. in Clubhouse II. No partner needed. Women welcome. Call Alan Levine at (301-288-7349).

• **Thursday Ladies Bridge** welcomes more card players. If interested, call JoAnn Gellman at (301-351-2391). Note: games have been postponed until further notice.

Chess: For free chess lessons for beginners or "rusty" players, call Bernie Ascher at (301-598-8577) to schedule an appointment. Regular chess games have been postponed until further notice.

Cribbage: Players meet for 150 minutes of competitive fellowship on Thursdays at 9:30 a.m. in Clubhouse II. There are cards and cribbage boards, and members would be pleased to teach you the game. It is a mixture of rummy and pinochle and is pure fun. (The group does not even keep score.) For more information, call George at (301-598-9747) or Bill at (301-598-7270).

Duckpin Bowling: Join the Duckpin Mixed Bowling League on Mondays at 12:30 p.m. at White Oak Bowling Lanes (11207 New Hampshire Ave., Silver Spring). The group needs bowlers of all skill levels and will welcome you into this enthusiastic group. Members carpool regularly, so non-drivers need not stay away. Call Lisa Zarou at (301-814-0029) or Flora Wolf at (301-598-5807) to join as a substitute or regular bowler.

Jigsaw Puzzle: There is a jigsaw puzzle table in the Clubhouse II lobby. Feel free to work on it at your leisure.

LW Golf Club: The golf course currently remains closed for play, but the paths are open to residents for walking. All golf tournaments of the men's and ladies' golf leagues have been postponed,

including the Maryland Interstate Senior Golf Association (MISGA) mixers.

The Club hopes to open in the near future and still squeeze all the golf tournaments and social events that were planned for 2020 into the remaining season.

Mah-jongg: Learn how to play mah-jongg. Call (301-598-3438).

Mind-Body Exercise Club: Members meet every Thursday afternoon from 2-3 p.m. in the Clubhouse II Activities Room to study and practice mind-body exercises under a leader. Interested Leisure World residents can join the club by paying a \$5 per person initiation fee. If you have any questions, call Judy Menkes at (301-847-9643).

Ping-Pong Club: Get healthy exercise and camaraderie playing ping-pong. The club meets Mondays and Wednesdays from 3-5 p.m. and Fridays from 1-3 p.m., in the Clubhouse II Ping-Pong and Meeting Room. Drop in anytime during that period. Some experience preferred. Questions? Call Julie at (301-598-5424) or email her at (julie12401@netscape.net).

Pinochle Players: Experienced Pinochle players wanted. Members play Mondays beginning at 5 p.m. in Clubhouse II. If interested, call (301-401-3103) or (301-598-6740). If you are interested in learning, you are welcome to observe.

Poker:

• **Poker Game** openings are available at the Greens, Thursdays from 7-10 p.m. No prior experience necessary. If interested, call Marcel at (240-486-6205).

• **Men's Poker** is seeking new members. Play is daily, beginning around 9 a.m. in the Game Room in Clubhouse II.

• **Play Poker** Mondays and Thursdays from 1 p.m.-4:30 p.m. in the Clubhouse II Game Room. The group plays hi/low only (two winners). Call (301-598-4331) or (301-434-6823) or come observe.

Thursday Night Poker meets every Thursday from 6-9 p.m. in Clubhouse II. Members play hi/lo, with or without wild cards, dealer's choice. All are welcome. Leisure World residents preferred. Call Dave at (301-598-7064) for information or just come and join us.

Indoor Pool Volleyball. If you are a LW resident who wants to enjoy the inviting warm water of the social pool, join your peers in social volleyball on Wednesdays, Fridays and Saturdays at 3 p.m. No skills needed, just come and have fun. Competitive volleyball games are played on Monday and Thursdays from 6-7:30 p.m. This game is for long-term, skilled players who want the intensity of competition and rarely miss the games. If you don't have a yearly indoor pool pass, a \$3 ticket good for one pool session may be purchased at the Clubhouse II E&R office. For more information, email Laurie Burdick at (lgburdick@aol.com). Note: The indoor pools in Clubhouse II are closed.

Low interest rates getting you down? Let's talk.

William P Mason IV, AAMS®
Financial Advisor
17904 Georgia Ave Ste 107
Olney, MD 20832
301-774-8500
www.edwardjones.com

Edward Jones
MAKING SENSE OF INVESTING

Member SIPC

JOEL'S EXECUTIVE CAR SERVICE

301-438-9777
301-980-4734 (cell)

- Airport
- Trains
- Doctor Visits



Get the Royal Treatment
Available 24 hours.



MJ Management Group

- Retired and tired of managing tenants in your rental properties?
- We buy single family and multifamily houses in any condition **nationwide** for **top dollars**.

We are your EXIT Strategy

info@mjmanagementgroup.com

📞 301.578.6898



Mark C. Wimsatt Painting

Interior
Free Estimates

Leisure World References
* Special Discounts *
for Moving in or Moving out

SENIOR DISCOUNTS!

301-828-6500

Serving Leisure World for over 35 years.

MHIC 10165

Insured

Cleaning And Disinfecting Your Facility

Everyday Steps, Steps When Someone is Sick, and Considerations for Employers

How to clean and disinfect

Wear disposable gloves to clean and disinfect.

Clean

- **Clean surfaces using soap and water.** Practice routine cleaning of frequently touched surfaces.



High touch surfaces include:

Tables, doorknobs, light switches, countertops, handles, desks, phones, keyboards, toilets, faucets, sinks, etc.



Disinfect

- Clean the area or item with soap and water or another detergent if it is dirty. Then, use a household disinfectant.
- **Recommend use of EPA-registered household disinfectant.** **Follow the instructions on the label** to ensure safe and effective use of the product.

Many products recommend:

- Keeping surface wet for a period of time (see product label)
- Precautions such as wearing gloves and making sure you have good ventilation during use of the product.

- **Diluted household bleach solutions may also be used** if appropriate for the surface. Check to ensure the product is not past its expiration date. Unexpired household bleach will be effective against coronaviruses when properly diluted.

Follow manufacturer's instructions for application and proper ventilation. Never mix household bleach with ammonia or any other cleanser.

Leave solution on the surface for **at least 1 minute**

To make a bleach solution, mix:

- 5 tablespoons (1/3rd cup) bleach per gallon of water

OR

- 4 teaspoons bleach per quart of water

- **Alcohol solutions with at least 70% alcohol.**

Soft surfaces

For soft surfaces such as **carpeted floor, rugs, and drapes**

- **Clean the surface using soap and water** or with cleaners appropriate for use on these surfaces.



CS316248A 04/01/2020

[cdc.gov/coronavirus](https://www.cdc.gov/coronavirus)

CLASSES & Seminars

Sign-up will be taken for newly advertised classes beginning on the Tuesday after the date of the edition of Leisure World News in which it appears. All sign ups begin at 8:30 a.m. in either Clubhouse I or II as noted in the class description. Residents can register for themselves and two other residents. **Please bring your Leisure World ID.**

If required enrollment is not met five days prior to the start date, the class will be canceled.

*****Please note fees for non-residents: add \$10 for 1-6 session classes and \$20 for classes of 7 or more sessions.**

Payment can be made by check or credit card (MasterCard, VISA or Discover); no cash is accepted. Checks *must* be made payable to Leisure World of Maryland Corp. Please sign up in advance of the starting date of the class since instructors need to know how many will participate. **Note: Registration will not be accepted nor refunds issued after the completion of two sessions!**

Leisure World does not discriminate on the basis of race, color, national or ethnic origin in admission policies, education policies or programs.

EDUCATION

Iducien ihitaquam quam quiaspiet es de vendelicia sit ute planienis inciusa piendip itiustiis doluptatur resequi auta nonseculpa es eaquis invenec

aboria voluptatem. Temossit etus dolorro reribus rereium re voluptaqui omnisci as dolutem dolest, alitat omnimet que coressimil inissim illaut eum facil es del ipientis ex explic test, occupata ssuscimetus.

DANCE

A non nullibus, tem quam, aliqui aut quos aut landitibus doloribus se volores trumquo te connime et fuga. Elit reperup tatatus eaquia quas iunt experib usapici tinusda ectotae consequo enet ex et aut es cum iundipi endias et fugitatem in eatem si occulpa

ipsae nemporem conseed molo maximos aut odicitae sincipsa cuptas quodist iumquisciur?

EXERCISE

A il il mostium fuga. Atioreptas aut ilita et rempore ssitaque peritat endus, in et quisquam fuga. Elitatque plaut aliquas rehendellis autem is

All upcoming classes and seminars have been canceled or postponed because of the COVID-19 pandemic. Check TV channel 972 for updates.

quiae estione mporem endit quibus apicit et que molum repro maximin conse dis sit verio. Itat.

Ad ut est qui autam hil incto eum sit, ut ducidel idel

ima pore lanis moluptatem eos cus sit eium sapidus, quunt, int.

Caborpos intion eos et faccumquatis rest perum fuga. et esequam evelendit utatem simus

Leisure World trusts Family & Nursing Care



As a premier resource for in-home care services,

Family & Nursing Care helps families rest easy, knowing their loved ones are well supported. From that first cup of coffee in the morning to a sacred bedtime ritual to an unexpected need in the middle of the night, **we are here for you.**

To learn more, come meet **Kelly** and **Jeff** in our office in the Leisure World Medical Center.



Licensed as an RSA by the MD DOH, OHCQ, MD RSA License R2519R; MD NRSA 070605.

3305 N. Leisure World Blvd. familynursingcare.com (301) 588-8200

CALENDAR *of Events*

Leisure World Mutual Meetings

May 1
Mutual 8 Board
10:00 a.m., via teleconference

May 7
Mutual 27 Board
7:00 p.m., via teleconference

May 12
Mutual 16 Board
9:30 a.m., via teleconference

Mutual 7 Board
1:15 p.m., via teleconference

Mutual 25 Annual
7:00 p.m., via teleconference

May 19
Mutual 14 Board
9:30 a.m., via teleconference

Several mutuals may choose to cancel these scheduled meetings or hold them via teleconference. Check TV channels 972 and 974 and (residents.lwmc.com) for updates or contact your mutual assistant or property manager.

Please keep in mind that many clubs, groups and organizations are taking precautions against COVID-19 (coronavirus) by canceling or postponing their upcoming meetings and programs, or are choosing to telemeet. For the latest updates, check TV channels 972 and 974.

Meetings of the LWCC Board of Directors, Executive Committee and Advisory Committees

Emergency Preparedness
May 7, 1:30 p.m., via teleconference

Security and Transportation
May 14, 9:30 a.m., via teleconference

Golf and Greens
May 1, 9:30 a.m., via teleconference

LWCC Executive Committee
May 15, 9:30 a.m., Sullivan Room (teleconference; closed to resident foot traffic)

Meeting times and locations subject to change.
Several committees may choose to cancel these scheduled meetings or hold them via teleconference. Check TV channels 972 and 974 and (residents.lwmc.com) for updates.

Interested in advertising in the Leisure World News?

For information:
call 301-598-1310
or email lwnewsads@lwmc.com



**Dial 301-598-1313
for recorded Daily Events**



We Cater to Cowards • Same-day Emergencies • Evening Hours
Will File Forms for All PPO Insurance Carriers

Look and feel your best!



**COMPREHENSIVE FAMILY
& COSMETIC DENTISTRY**

\$50 off your first visit

Not valid with third party plans, new patients only.

Located at MedStar Montgomery Medical Center
18111 Prince Philip Dr.
Suite T-17
Olney, MD 20832

T: 301-774-7887 • www.OlneyDental.com

CLASSIFIEDS

THE LEISURE WORLD of Maryland NEWS reserves the right to reject or discontinue any advertisement believed inimical to the best interest of Leisure World. The News shall accept advertising on the same basis as other reputable publications: that is, it shall not knowingly permit a dishonest advertisement to appear in the Leisure World of Maryland News, but at the same time the News will not undertake to guarantee the reliability of its advertisers.

The News recommends that before a resident engage any service herein advertised, that the resident request and verify applicable credentials (i.e. bonded, licensed, insured) and references.

For information on placing advertisements in the Leisure World News, email (lwnewsads@lwmc.com) or call (301-598-1310).

HELP WANTED

401K PLAN AUDITORS: Great opportunity for retiree looking to keep skills sharp. We need experienced auditors for the upcoming season. At least 3 years' experience with 401k plan audits or similar audits is desired. Seasonal work, April through October, full- or part- time. Pay \$35 to \$50 per hour. Contact Bernard Bethke at (bbethke@bethkecpa.com) if you are interested and qualified.

WANTED

FAST CASH FOR USED CARS — Big dollars paid for your used car! Over 43 years' experience serving Leisure World. Please call; available 24 hours. I will come to you. Cash or cashier's check at your request. I can also help with your new car purchase, any make or model! MD Dealer #U2927. Call Marty Salins (301-325-1973).

WILL BUY MILITARY, WWII, WWI, Civil War memorabilia items. Uniforms, weapons, helmets, photos, medals or any other items associated with U.S., German, Japanese or other military history. Call Dave (240-464-0958) or email (david.obal63@gmail.com).

CASH FOR JEWELRY: gold, silver, costume, diamonds, coins (including foreign), watches, stamp collections. (theatticllc.com) Gary Roman (301-520-0755).

TURN YOUR STERLING SILVER and old gold jewelry into cash and do something good for yourself. Gold 4 Good (8241 Georgia

Ave., Ste. 100, Silver Spring, MD 20910) buys gold and silver jewelry, including broken pieces, all sterling silver, gold watches and gold and silver coins. I will come to your house and give you a free evaluation of what I can pay. Gold 4 Good pays an additional five percent to all sellers who are veterans of the U.S. Army, Air Force, Navy or Marine Corps. And we extend the same courtesy to their spouses. We honor our servicemen (and their spouses). Gold 4 Good is a Maryland licensed precious metals dealership, not a pawnshop or private home-based business. If you decide to sell, I can buy your items at that time, but there is no obligation. Licensed with both Maryland and Montgomery County (lic. #2327). Call Bob (240-938-9694).

Paying cash for **MERCHANDISE PRE-1980s.** Old toys, record albums, silver and coins, Zippo lighters, pocketknives, first-edition books, smoking pipes, advertising items, mid-century furniture, lamps and clocks, Florsheim shoes. If you have old stuff to sell call or text pictures to Carl. (312-316-7553). Located in Silver Spring.

ESTATE SALES

CASH FOR ESTATES. I buy a wide range of items: jewelry, art, rugs, etc. Buy out/clean up. (theatticllc.com) Gary Roman — (301-520-0755).

ATTIC TO BASEMENT ESTATE Cleanouts LLC — I provide honest and confidential estate cleanouts with reasonable rates. I assist executors, family members and guardians with a personal touch. I will save you time and money providing fast, efficient service. I work with local auction and hauling companies. Please call or email me to set up an appointment. Janet Ray (301-384-3198), (wishalot10@aol.com).

LOOKING TO DOWNSIZE, move or sell all household items or just a few? What about that storage unit? Call Estate Sales by Cheryl, LLC! Let's get started making you a profit! (301-437-2705)

AUTO SALES

2016 TOYOTA CAMRY LE. Four-door. MD-inspected, like new. Only 13,500 miles. One owner. \$14,999. I will buy your car even

if you don't buy mine. Dealing with Leisure World for 43 years. Licensed and bonded. Cash or cashier's check for your car, van or truck. Please call Marty Salins at Auto Plaza (301-325-1973).

2007 TOYOTA COROLLA. Four-door. Automatic A/C, MD-inspected. Only 32,000 miles. Like new. \$7,900. I will buy your car even if you don't buy mine. Dealing with Leisure World for 43 years. Licensed and bonded. Cash or cashier's check for your car, van or truck. Please call Marty Salins at Auto Plaza (301-325-1973).

FAST CASH FOR USED CARS — Big dollars paid for your used car! Over 43 years' experience serving Leisure World. Please call; available 24 hours. I will come to you. Cash or cashier's check at your request. I can also help with your new car purchase, any make or model! MD Dealer #U2927. Call Marty Salins (301-325-1973).

TRANSPORTATION SERVICES

A-1 SERVICE, call-and-ride — doctors, airport. \$35. Will pick up your groceries. Always on time. Over 250 satisfied customers from Leisure World. Call all night for emergencies also. Larry Kraft (240-743-8287).

DRIVER WITH CONCIERGE STYLE at regular rates. First, I sanitize the car in your presence before we go to your destination. I am a Leisure World resident and I understand the needs of our community. My service is a four-door Mercedes-Benz sedan with all the comforts of a leather-seat luxury car, temperature-controlled interior, ample trunk space and a smooth ride. Most important is my absolute dependability and providing any special assistance you may need. Call Ken at (508-612-9647).

LEISURE WORLD RESIDENT with an accident-free record has brand new car to drive seniors to doctors' appointments, grocery or other shopping, the airports, etc. (Experienced medical transcriptionist can take accurate notes during doctor appointments, if needed). Call CPR- and AED-trained Stephanie Sidella at (301-922-5080) or (ssidella@verizon.net).

HAVE CAR, WILL TRAVEL. Flat rates to all airports. \$45 to and from Dulles. \$45 to and from BWI. \$45 to and from Reagan National. Union Station, doctors' appointments. Call John Westmoreland (301-536-5801).

DRIVER with 25 years' experience. I am a Leisure

World resident. Drive anywhere. Comfortable, smooth, safe. Accident-free record. Clean vehicle. I'm available 24/7. Call or text (703-649-1293).

YOUR PERFECT PRIVATE DRIVER is right here! Lifetime DC Metro resident. Friendly, reliable, competent service. Safe, accident-free record. Comfortable, clean vehicle can seat up to six passengers. Airports, cruiseports, trains, theatres, casinos, restaurants, festivals, ceremonies, medical appointments... To/from anywhere, including long-distance trips in other states. Reservations are recommended. Call 7 a.m.-10 p.m. with questions or to arrange/guarantee your ride. Available 24/7. Emergency calls, if needed. Steven Saidman. Cell/text (301-933-8899). Email (steve.your.driver@gmail.com).

FLORAL

FLORAL DESIGN AND DELIVERY from a local Kensington shop. Specializing in funerals, celebrations and other occasions. See designs on (districtpetals.com). (202-701-5596), (oscar@petalstothemetal.com).

CAREGIVING AND HEALTHCARE

Healthcare professionals must provide current proof of certification or license from the Maryland Board of Nursing to include "certified" or "licensed" in their advertisement. Examples of positions requiring such proof include, but are not limited to, registered nurse, licensed practical nurse, certified nursing assistant, geriatric nursing assistant and medication technician.

"A" HOME HEALTH CARE for Senior Citizens — Care you can trust and is affordable. Reliable and qualified aide and nursing staff available. Companionship, personal care, meds, housekeeping, shopping, driving. Full/part-time or live-in. Flat rate for live-in care. Call (240-533-6599).

FLAT RATES, ONE WEEK FREE. "Care You Can Trust and Afford." Reliable, experienced caregiver providing hygiene care, medication reminders, meals, housekeeping, errands, appointments etc. Full/part-time, live-in, overnight or weekend. Call today: (301-490-1146).

ELDERLY CARE: Over 10 years' experience. Great reference. Available for long days or nights. Can drive. Leisure World resident. (240-461-2188).

OVERNIGHT CAREGIVER with more than 14 years' experience with seniors and people with

RECYCLING REMINDER

From the Sanitation Department

special needs. I provide safe, respectful, loving, skilled care towards every one of my patients. I will deliver peace of mind to family members by keeping their loved ones safe while also protecting their independence and preserving their dignity. I give detailed information and pay close attention to my clients and to the families' needs. I have taken care of many people from family members, friends and clients in facilities to group home members and privately cared-for patients. Whatever the needs may be, I strive to go above and beyond my call of duty. Life is a treasure and if I can provide life or encouragement to anyone, or let them know that they are still loved and living with grace and dignity, I am that Angel. Arafa (240-883-8933), (brownzebra@hotmail.com). Availability: 10 p.m.-7 a.m.

Augusta Obimpeh is my name. Am a CNA/GNA/MED TECH. I have 16 years' experience caring for elderly. I provide long- and short-term care — very affordable companion care, nursing care, housekeeping, etc. Contact me on (240-883-8126), (240-252-0439) or (301-793-3989). (sweetieamae@yahoo.com)

EXCELLENT CAREGIVER AVAILABLE: Highly competent, trustworthy, flexible, and caring — cared for my parents for over five years. Leisure World resident. Highly recommended. (301-509-7234).

WARM ANGELS ELDER CARE (warmangelseldercare.com) — Reana Robinson, independent certified nursing assistant. A minimum of 2 hours. For information please call (240-360-7783) or email (reanar1@yahoo.com).

CNA/GNA/MED TECH with CPR and first aid license. Experience working with elderly. Have worked with agencies, nursing homes and also private duty. Am available full-time or part-time. Please call (240-252-0439), (240-713-1654), or email (sapomadezeus@yahoo.com).

RELIABLE, PROFESSIONAL and COMPETENT trained caregiver (GNA) and medicine aide (CMA) seeking employment opportunity to provide excellent assistance and care for resident. I am a safe driver and will take you out and work any hours you want, morning, evening and night. (240-755-1516).

PRIVATE HOME CAREGIVER (starting at \$20/hour). Marie Thorogood, CNA. • Hygiene, cleaning and dressing • Client's laundry • Daily physical activities • Maintain client's medical history logs • Meal prep • First Aid/CPR. (301-537-7958), (angietgood42@gmail.com).

CNA, GNA, MEDICINE AIDE, elderly care. Over 10 years' experience. Certified CPR, first aid. Reliable, responsible, loving and caring, respectful. Great references. Good driving record. Available any time. Call (301-275-8713).

ASSISTED LIVING

JOINED HANDS ASSISTED LIVING, a gorgeous senior living place in Gaithersburg, MD. We chose the art of caring and we do it with passion! Call to schedule a tour: (240-550-5861). Visit us at (www.joinedhand.com).

ASSISTED LIVING: a professional, dependable and affordable care community on nearby Bel Pre Rd. We provide 24-hour, 365-day service, such as homemade meals, laundry, bathing, toileting, medication administration and recreational activities. We also provide skilled nursing care, such as complicated diabetes care, peg tube feeding and wound care. Resident-centered care is a reality in our loving community. Contact Ms. Cai at (301-801-6510) for more information.

HOME SERVICES

KITCHEN and BATHROOM REMODELING — Cabinet and countertop replacement, and bathtub to accessible shower conversions. Please call Joe at JML Remodeling. (301-598-8400). Serving Leisure World since 1988. MHIC# 36674. Thank you.

STAIR LIFTS: Never walk up steps again! Buy new or certified pre-owned stair lifts at affordable prices. Professional installation and free service contract included. Call (301-448-5254).

CONTINENTAL MOVERS. Local moving services. Free boxes. Local — long distance — hauling — pick-ups and deliveries. \$80 x two men, one hour driving time. (202-438-1489) (301-340-0602) (Cmora53607@msn.com) (www.continentalmovers.net).

SMALL MOVES and TRASH-OUTS. Leisure World experienced. Can take items to donation center. Reasonable and insured. Patrick (301-332-4872).

COOPER REFUSE-JUNK REMOVAL. Prices starting as low as \$65. Lifting and loading from wherever the item is located. Donation or recycling of all qualified items. Call today and save (301-996-7704)

LANDSCAPING SERVICES: Beautifying LW, one property at a time! Affordable, reliable and experienced! Services include power washing, spring cleanup, mulching, landscaping design, weed removal and planting. Call Greg at (240-994-

5258), (gmarinik@gmail.com). References provided.

GUARDIAN ANGEL LAWN SERVICE. Experienced in flowerbeds, mulching, edging, weeding, plowing gardens and repairs. For all your gardening and household needs, please call Robert at (240-477-2158), (301-987-1277).

CABINET FACE LIFT: Tired of your old kitchen and bath cabinets? Need to wow your kitchen for yourself or for resale? We can make them beautiful again for a small fraction of new cabinets! We can change the color just like that, or just freshen them up, saving you thousands of dollars! Give Eve a call for a free estimate and samples. (301-221-8867)

CLEANING SERVICES

R&G CLEANING SERVICES — Small, family-owned business catering to you and your household needs. Friendly, reliable and trustworthy with many years of experience. Reasonable rates and flexible hours. Licensed and insured. Help with household organization. Free estimate with appointment. Call (301-442-5032).

ALICIA'S CLEANING SERVICES — Good references. Good rate. Once a week or every two weeks. (240-286-3807).

UNITED CLEANING GROUP has been a trusty cleaning company used by several Leisure World members over the past 3 years. Call us for your free estimate today! We offer both apartment and home cleanings, garden work and power-washing services. We are extremely flexible: 7 days a week to accommodate your schedule. Give us a call at (240-498-2748) and/or (301-881-0695). We hope to hear from you soon!

MARIA'S HOUSE CLEANING, free estimates, strong references, good rates. Experienced worker in LW for eight years. Call Maria (240-694-6547).

CARE DRY CARPET CLEANING. Experience the difference. Host dry extraction system. Green, clean and dry in 30 minutes. Water damages wood flooring under your carpet. Choose dry cleaning. Call Mike Gonsalves, owner/operator (301-309-9398).

HOUSECLEANING. Available Tuesday, Wednesday and Thursday. Very honest. References. Good price. Free estimates. Maria Elena. Call (301-768-7184).

COMPUTER SERVICES — Problems with your PC or

Network? Computer Systems Engineer will come to you with help. Home, Business. Call David G. (301-642-4526).

COMPUTER LESSONS / SERVICES — Need help with your computer or other digital devices in your home? Tablets, smartphones, smart TVs and more. Computer training, new computer setup, troubleshooting. Lessons at your residence at your convenience. Learn basic computer, email, surfing the web, digital photos. Patient trainer will sit by your side and teach you in plain English — no technical talk! Shopping assistance for electronics and computers. Senior specialist since 1996. Call David at (301-980-5840). **COMPUTERTUTOR**

A+ COMPUTER SERVICES. Free in-house diagnostic of your computer, printer, or basic set-ups. A+ certified, virus removal, back-up, and retrieve important data, photos, and music. Have served over 700 clients in Leisure World. Also will teach lessons on Microsoft Office and basic computer skills at your home. Alex Nowrouzi, (301-312-2277). I reside in Leisure World.

AZ Fix — WE FIX AND RECYCLE all brand consumer electronics. Cell phones, cameras, computers, tablets and TVs. Free diagnosis. In-home services, home pick-up for repair and recycling. Call: (240-560-6779) | Website: (Azfixmd.com) | Address: 2233 Bel Pre Rd.

PERSONAL SERVICES

PRESERVE YOUR FAMILY MEMORIES! Don't let your precious photos be forgotten or fade over time. I'll digitize your photos, slides, and mementos so they can be easily shared with friends and family. Once they're scanned, I can label the photos to identify the people in them, or bring your photos to life in a memorable DVD slideshow. Call Kim at Virtual Computer Services, (301-438-3140).

TIRED OF POLISHING your silver? Turn it into cash, which does not tarnish. I will come to your home and give you a free evaluation of what I can pay. I buy all gold and silver jewelry, including broken pieces, all sterling silver, gold and silver coins, gold watches, etc. I am licensed with both Maryland and Montgomery County (lic. #2327). Gold 4 Good pays an additional five percent to all sellers who are veterans of the U.S. Army, Air Force, Navy or Marine Corps. And we extend the same courtesy to their spouses. We honor our servicemen (and their spouses). Gold 4 Good is a Maryland licensed precious metals dealership, not a pawnshop or private home-based

business. If you decide to sell, I can buy your items at that time, but there is no obligation. Call Bob, Gold 4 Good, 8241 Georgia Ave., Ste. 100, Silver Spring, MD 20910 (240-938-9694).

DAHLSTROM SENIOR SUPPORT SERVICES. Assistance with senior care and the care of seniors' pets. Safe/reliable door-to-door transportation as needed. Assistance with pet care. Dog walking and pet sitting as needed. Transportation for grooming/vet appointments. I'm a 58-year-old semi-retired doctor, Leisure World resident. Bonded, insured, outstanding Leisure World references. Call Carl (410-499-9362).

NEED SENIOR CARE? LW resident with 14 years of LW experience, plus years of working in health-related fields, has immediate openings. CPR and AED trained, Stephanie enjoys helping seniors with entertaining companionship, light housework, exercising, cooking, driving, etc. (Experienced medical transcriptionist can take accurate notes during doctor appointments, if needed.) Call Stephanie Sidella at (301-922-5080) or (ssidella@verizon.net).

PHOTO RESTORATION. We restore any black-and-white or color photos that are scratched, damaged or discolored. You will love the final fresh-restored printed pictures. Special discount for repeat Leisure World clients. Call Laura or Ionel at (301-598-2536) for a free estimate.

NOTARIES

NOTARY, residing in Leisure World. I offer my service free of charge to Leisure World residents. Can come to your home if needed. (301-379-9694).

DONATIONS WANTED

HOUSING UNLIMITED, INC is a non-profit organization that provides housing for people in mental health recovery. We accept furniture and housewares that are in good condition to furnish our homes. We do pick up. The Housing Unlimited office is (301-592-9314). Thank you.

WANTED: CAR DONATIONS. Support MCPS students by donating your car. Write off up to fair market value! (www.Cars2donate.org) or (240-740-2050).

BOOK DONATIONS WANTED for the American Association of University Women (AAUW) book sale in Gaithersburg, postponed until fall. To support local scholarships for women and mentoring program for girls and women. Fiction and non-fiction, hardback and paperback, audio

books, DVDs. Art, kids', cooking, foreign languages, gardening, history, mystery, sci-fi, science, women's studies, African-American and Jewish interests, etc. Pickups can be arranged in and near Leisure World. For more information call Liz at (301-840-1258).

NO LONGER USING YOUR CAR? Residents with an unused or unwanted vehicle can donate it to Vehicles for Change. They'll pick it up for free and you earn a tax deduction for the fair market value. Why VFC? As a nonprofit, they match each donated car with low-income families in need of transportation. Your car could be a family's ride out of poverty. Donate today at (www.vehiclesforchange.org) or call (855-820-7990).

ACTIVITY OPPORTUNITIES

THE KNIGHTS CORNER. The Knights of Columbus is a fraternal Order of Catholic men who are called to lead with faith, protect our families, serve others and defend values in a busy changing world. In Father Peter Paul Maher Council #6793, you will find that Knights of Columbus membership brings Catholic men together in a powerful way to serve our Church and our Community. If you would like to join today simply go to (KofC.org/joinus) and enter our Council #6793. For local information, please contact Fred Taylor at (301-871-8928) or (taylorwf8@verizon.net).

"INTRODUCTION TO BUDDHISM" — I am a Leisure World resident and practicing Buddhist for 30 plus years. Would you like to learn more about this ancient religion and visit a local temple for lectures? Please leave a message with your number at (240-605-1512). Also you can visit the website at (nstmyosenji.org).

VOLUNTEER OPPORTUNITIES

MAKE A DIFFERENCE in a family's life. Habitat for Humanity ReStore needs volunteers to work in its ReStore (Rockville or Silver Spring), especially daytime volunteers who can take a regular shift of three to four hours. Shifts typically are 9 a.m.-1 p.m., 1-5 p.m., or 3-6 p.m. Email (alena.biagas@habitatmm.org) or call (301-990-0014 x 16) if you are interested in volunteering.

VOLUNTEER WITH REPRESENTATIVE PAYEE! Representative Payee helps low-income persons with disabilities manage their finances. Each volunteer is matched with a client who needs help with budgeting, paying routine bills and keeping track of financial matters. If interested in volunteering, contact the Volunteer Coordinator

(301-424-0656, ext. 541) or (volunteer@mhamc.org).

VOLUNTEER AS A HOTLINE CALL COUNSELOR with the Montgomery County Hotline! The Montgomery County Hotline is a 24-hour, seven day a week confidential service. Counselors provide supportive and confidential listening; crisis prevention and intervention; and give information, referrals and resources. Contact (volunteer@mhamc.org) or (301-424-0656, ext. 541) if interested.

MEALS ON WHEELS is looking for caring and dedicated volunteers to deliver meals to homebound and disabled individuals in the Leisure World area. Service area includes: Leisure World, Olney, Wheaton, Sandy Spring. Please contact Emily Trotter at (443-573-0925) or email (trotter@mowcm.org).

MEALS ON WHEELS (MOW), which runs out of the Inter-Faith Chapel site, needs more volunteers to deliver meals. If you have or know someone who has one and a half to two hours every other week or one time a month and might be interested in serving in this capacity, please contact (410-730-9476).

KOSHER MEALS ON WHEELS, sponsored by JSSA, needs volunteers to deliver nutritious meals to homebound seniors. Volunteers will pick meals up at the Hebrew Home in Rockville and deliver them to seniors in Montgomery County. Schedule is flexible. Call Diane Hays-Earp at JSSA, (301-816-2639).

THE SENIOR CONNECTION needs volunteers who live in the 20906 zip code area to drive seniors to medical appointments and help with grocery shopping. Schedules are flexible and just two to three hours a month can make a difference! Training and liability coverage are provided. Call (301-942-1049) or contact (volunteer@seniorconnectionmc.org) to learn more.

HELP A CHILD! In just one-two hours a week you can make a difference in a child's life. Volunteers provide friendship and encouragement, help with reading, offer homework assistance, and engage in crafts and cultural activities at schools near Leisure World. For more information, contact Interages at (301-949-3551) or (interages@AccessJCA.org).

BLANKETEERS — Love to knit, crochet or quilt? Project Linus donates handmade blankets to Montgomery County children needing comfort. Contact (projectlinus.mc@gmail.com) for more info, free yarn and fabric, and blanket requirements.

VOLUNTEER TUTORS and FACILITATORS needed! The Literacy Council of Montgomery County offers one-on-one and small group tutoring, conversational English classes, and a new GED Program. No experience necessary. We provide materials, training and ongoing support. Sign up for an information session online at (www.lcmcmd.org) or call Raul Marin at (301-610-0030, ext. 211), or email (Raul@lcmcmd.org).

PET FOSTERS. Seniors needed by AARF (Animal Allies Rescue Foundation) for new program in Montgomery County. Temporarily care for a dog or cat until a permanent home can be found. For more information contact Wanda Mayhew, (301-275-0585) or (www.animalalliesrescue.org). Follow on Facebook. AARF is 501(c)(3) all-volunteer non-profit.

MONTGOMERY HISTORY, a local nonprofit located in downtown Rockville dedicated to collecting, preserving, interpreting and sharing the histories of Montgomery County's residents, is seeking volunteers in the following areas: museum docents (weekends and holidays); library assistants (weekdays); special events volunteers (weekdays and weekends); and communications and outreach assistants (weekdays only). For a list of volunteer opportunities please visit: (https://montgomeryhistory.org/intern-volunteer-opportunities). Contact Matthew Gagle, outreach and volunteer coordinator, at (mgagle@montgomeryhistory.org) or (301-340-2825).

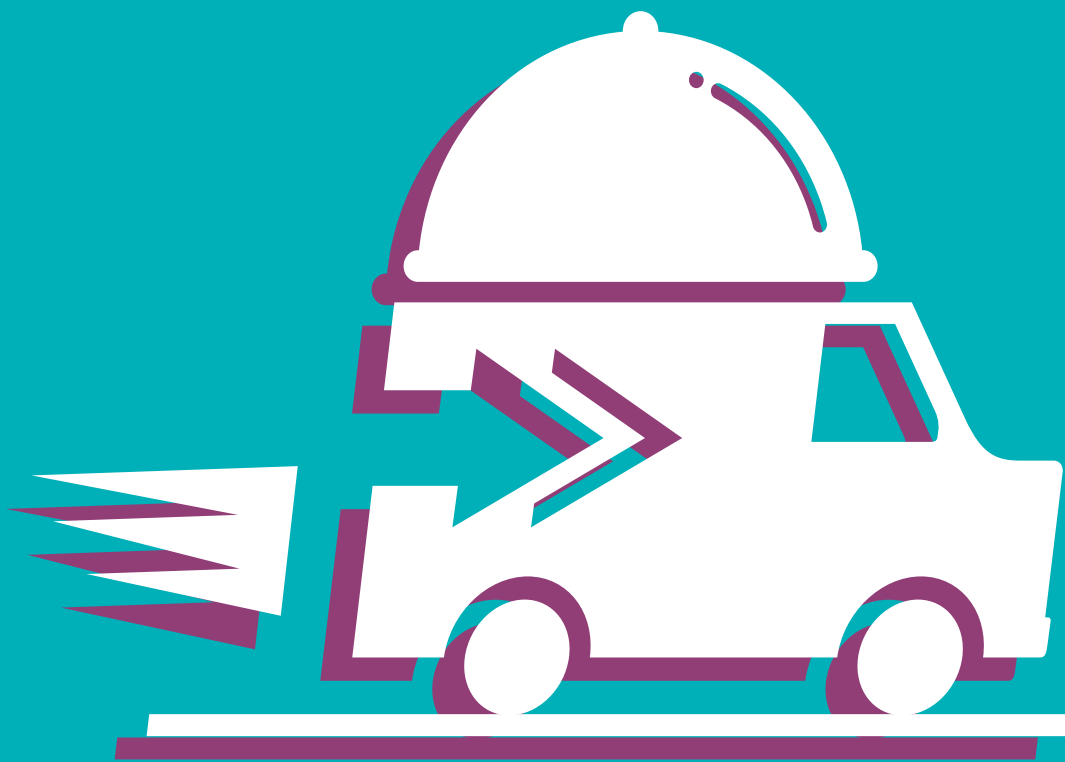
INTERESTED IN HELPING KIDS learn about giving and service? The Giving Square is a local non-profit which recognizes the power of children to be contributors to their community. Through our work, kids become more empathetic, altruistic and committed to addressing local needs. This is a school-based program which works across 20 schools and organizations, mostly in Montgomery County. We are looking for advisors, classroom volunteers, and sewing support! For more information, please contact Amy at (amy@thegivingsquare.org) or (202-487-3103).

NOTICES

KEEPING SENIORS SAFE — KSS. Morton A. Davis, coordinator and resident of Leisure World is available to discuss theft prevention, driving and shopping habits, frauds, home safety inspection and property crimes to any organization. The program is part of the Montgomery County Police Department Volunteer Resource Section. Morton can be reached at (240-706-1850) or (mortonadavis@comcast.net).

***Stein Room and Terrace Room
have expanded their***

**DELIVERY
SERVICE**



Available daily, 11 a.m.–6 p.m.

No minimum order amount!

Only a \$4 surcharge for delivery.



Call 301-598-1330 to place your order.

Delivery menu available at residents.lwmc.com >
Amenities and Services > Restaurant

SERVING YOUR 2020 REAL ESTATE NEEDS

Enjoy the benefits of our combined strengths!

Ask Us About Our Metro Expertise Too!

All Properties Advertised Are Our Own Transactions!



Specializing in Retirement Living



SUDHA BAXTER

RE Licensed
MD & DC
202-368-8536

SUE HEYMAN

Former Mont. Co. Teacher
Seniors Specialist
MD RE Licensed
301-580-5556

RICK WINKLER

CPA
RE Licensed
MD & DC
301-404-3105

Weichert Award Winning Top Producers • Community Resident and Community Investors
Expanded Coverage for Buyers and Sellers in DC and MD • Awarded for Excellent Client Service
Sue is #1 Lister in the Regency Mutual 25 • Top 1% of Agents Nationwide



COMING SOON! \$359,900

Vantage Point West "KK" Model + Garage
2BR, 2FB + Den 1490 sf.



SOLD! \$380,000

"Cabot" Model Patio Home
3 BR 2 FB, Kit, BA & flrs updates
fenced patio 2 car gar. 1193 sf.



LISTING SOLD! \$330,000

Villa Cortese "L" Model
Building 4, 3BR, 2FB,
updated kitchen, 1520 sf.



SOLD! \$285,000

Vantage Point West "F" Model + Garage
2BR, 2BA, 1315 sf.



LISTING SOLD! \$530,000

Overlook "L" w Garage Space
End unit w best view, huge kit w
stainless, fully renovated, 1735 sf.



LISTING SOLD! \$440,000

Villa Cortese New Building "Q"
Luxury 2 BR, den, 2 FB, green
view, garage space incl, 1574 sf.

A note to our readers... In these difficult times, we are here for you today and in the months ahead. We will gladly answer your Real Estate questions and address your concerns via cell, text, or internet conference. Together, we offer you our assistance to help you navigate our new normal. Stay safe... Rick, Sudha, and Sue



LISTING SOLD! \$715,501

Regency Oak Hill Model - New hwd flrs, updated BAs, 2 first flr BRs, two car garage, 3684 sf.



SOLD! \$380,000

Vantage Point West "J" Model + Garage
3 BR 2 BA, 1540 sf.



LISTING SOLD! \$468,000

Elegant, Updated Patio Home
Turnkey, 2 BR, 2 FB, family room
w/FP 2 patios, 2 car gar, 1470 sf.



LISTING SOLD! \$485,000

Villa Cortese New Building "T"
3 BR, 2 FB, upgraded appliances
& floors, garage space, 1560 sf.

CALL US FOR FREE:
CONSULTATION, COMPETITIVE MARKET ANALYSIS,
& COMMUNITY BOOKLETS

Sue Heyman: 301-580-5556 sueheyman@aol.com
Rick Winkler: 301-404-3105 rwinkler@weichert.com
Sudha Baxter: 202-368-8536 sudhabaxter@yahoo.com
Weichert Realtors: 301-681-0550 office